

Data Path : Z:\pestpcbsrv\HPCHEM1\ECD_0\Data\P0052522\
 Data File : P0086562.D
 Signal(s) : Signal #1: ECD1A.CH Signal #2: ECD2B.CH
 Acq On : 25 May 2022 18:03
 Operator : YP\AJ
 Sample : N2895-06
 Misc :
 ALS Vial : 35 Sample Multiplier: 1

Instrument :
 ECD_0
 ClientSampleId :
 P030-SS001-0612-01

Integration File signal 1: autoint1.e
 Integration File signal 2: autoint2.e
 Quant Time: May 26 06:44:44 2022
 Quant Method : Z:\pestpcbsrv\HPCHEM1\ECD_0\methods\P0051122.M
 Quant Title : GC EXTRACTABLES
 QLast Update : Thu May 19 09:06:34 2022
 Response via : Initial Calibration
 Integrator: ChemStation 6890 Scale Mode: Small noise peaks clipped

Volume Inj. : 2 µl
 Signal #1 Phase : ZB-MR1 Signal #2 Phase: ZB-MR2
 Signal #1 Info : 30Mx0.32mmx 0.50µ Signal #2 Info : 30M x 0.32mm x 0.25µm

Compound	RT#1	RT#2	Resp#1	Resp#2	ng/ml	ng/ml

System Monitoring Compounds						
1) SA Tetrachlo...	4.477	3.673	2161486	899585	21.273	20.653
2) SA Decachlor...	10.326	8.721	931240	532334	17.150	15.297
Target Compounds						
31) L7 AR-1260-1	7.276	6.265	738326	419641	243.961	215.607
32) L7 AR-1260-2	7.535	6.452	1422181	816772	393.140	347.515
33) L7 AR-1260-3	7.898	6.607	1693967	484516	613.756	225.328 #
34) L7 AR-1260-4	8.126	7.079	1379286	760819	408.800	422.529
35) L7 AR-1260-5	8.453	7.320	2716486	1881293	440.222	434.296

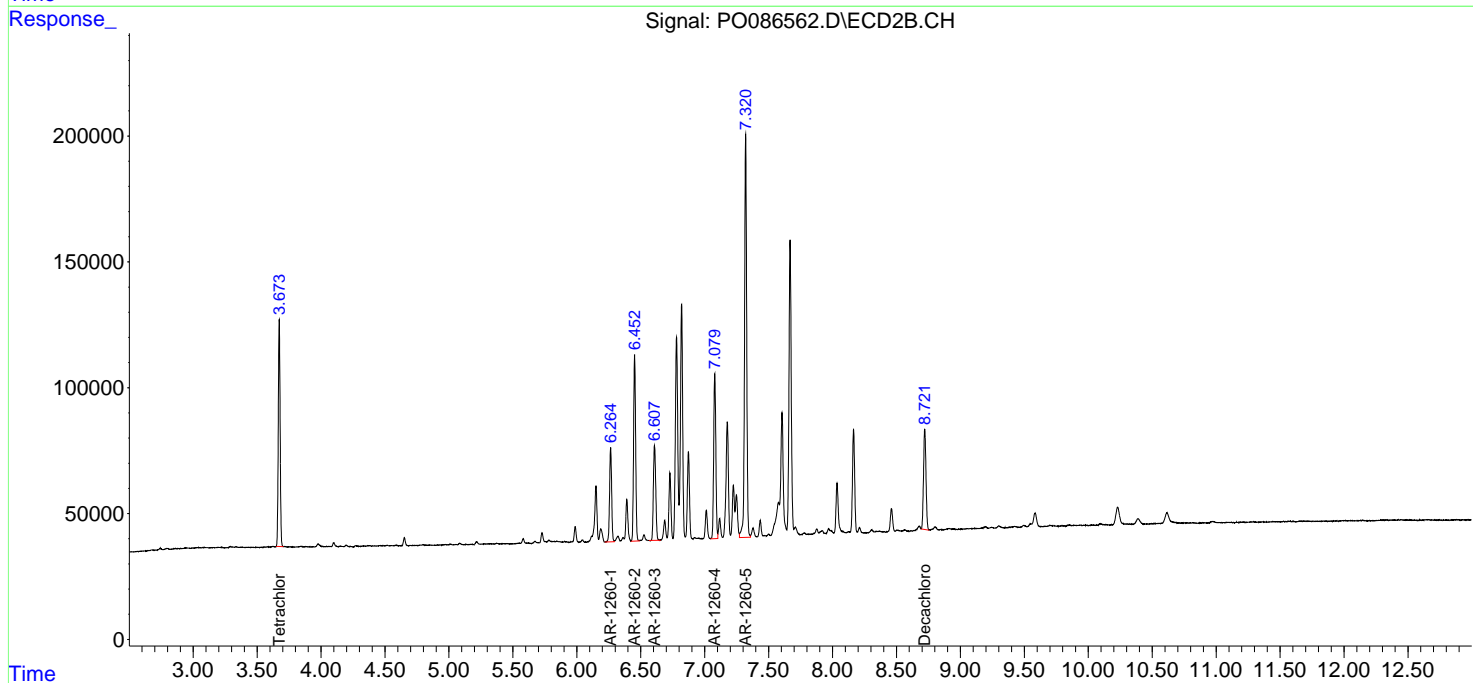
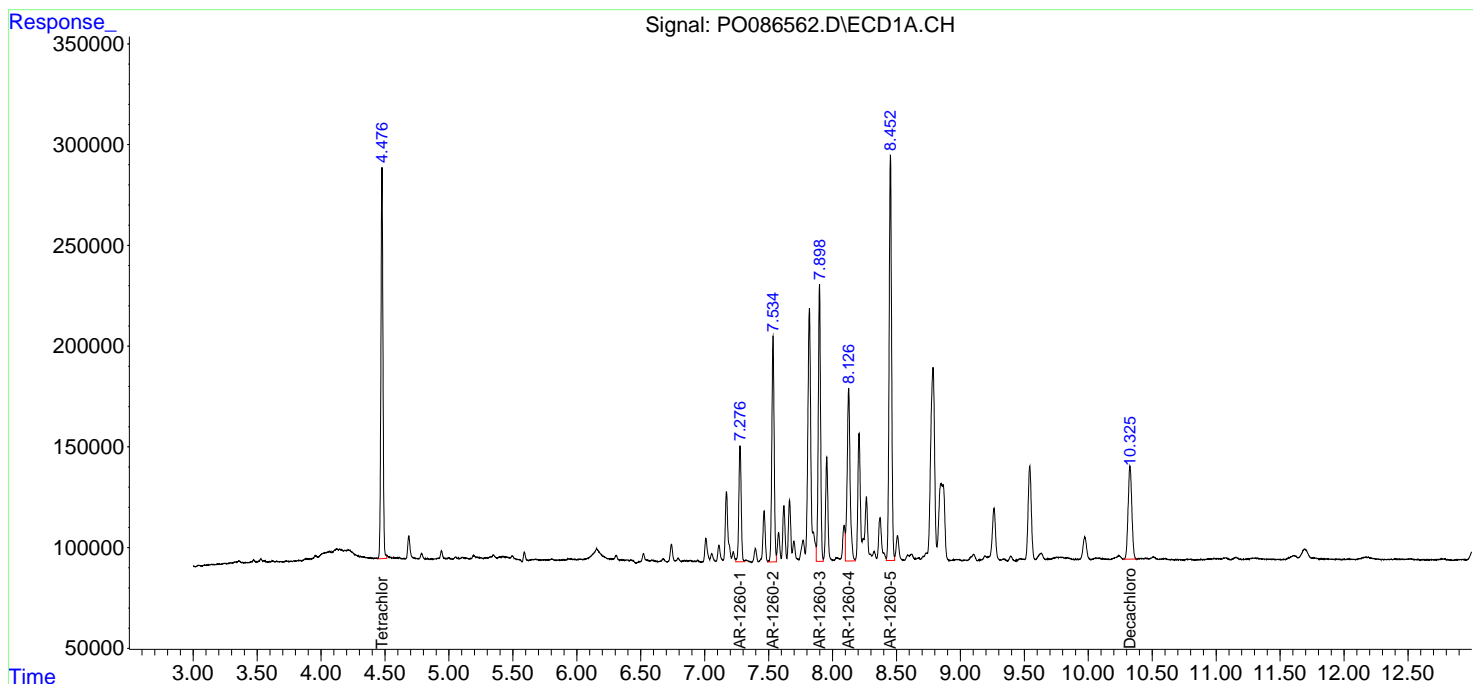
(f)=RT Delta > 1/2 Window (#)=Amounts differ by > 25% (m)=manual int.

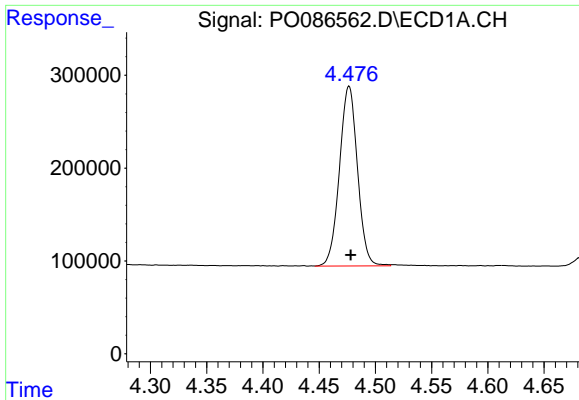
Data Path : Z:\pestpcbsrv\HPCHEM1\ECD_0\Data\P0052522\
 Data File : P0086562.D
 Signal(s) : Signal #1: ECD1A.CH Signal #2: ECD2B.CH
 Acq On : 25 May 2022 18:03
 Operator : YP\AJ
 Sample : N2895-06
 Misc :
 ALS Vial : 35 Sample Multiplier: 1

Instrument :
 ECD_0
 ClientSampleId :
 P030-SS001-0612-01

Integration File signal 1: autoint1.e
 Integration File signal 2: autoint2.e
 Quant Time: May 26 06:44:44 2022
 Quant Method : Z:\pestpcbsrv\HPCHEM1\ECD_0\methods\P0051122.M
 Quant Title : GC EXTRACTABLES
 QLast Update : Thu May 19 09:06:34 2022
 Response via : Initial Calibration
 Integrator: ChemStation 6890 Scale Mode: Small noise peaks clipped

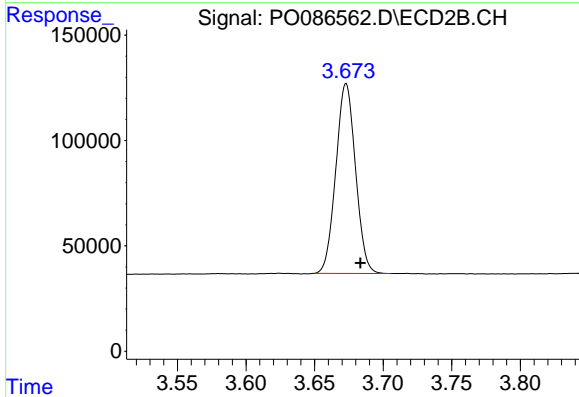
Volume Inj. : 2 µl
 Signal #1 Phase : ZB-MR1 Signal #2 Phase: ZB-MR2
 Signal #1 Info : 30Mx0.32mmx 0.50µ Signal #2 Info : 30M x 0.32mm x 0.25µm



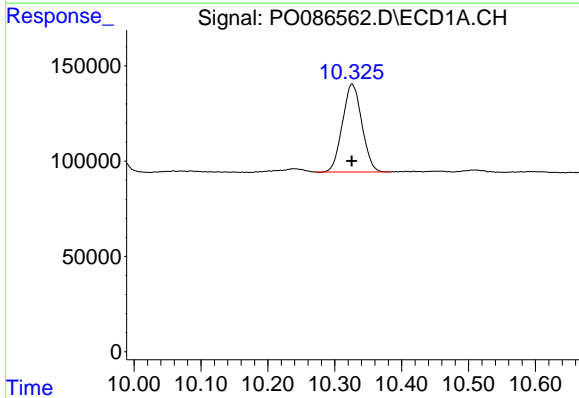


#1 Tetrachloro-m-xylene
 R.T.: 4.477 min
 Delta R.T.: -0.001 min
 Response: 2161486
 Conc: 21.27 ng/ml

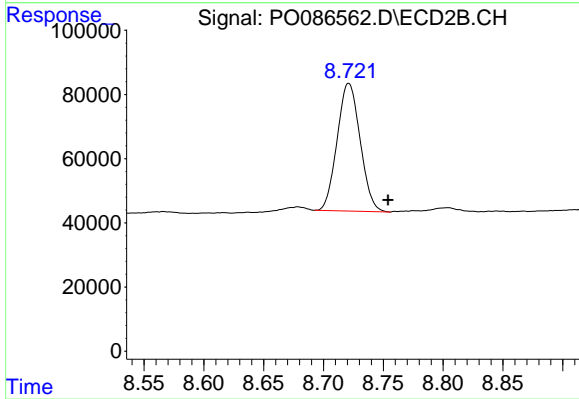
Instrument :
 ECD_O
 ClientSampleId :
 P030-SS001-0612-01



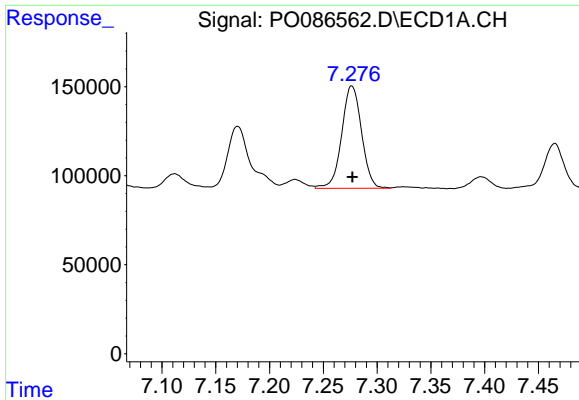
#1 Tetrachloro-m-xylene
 R.T.: 3.673 min
 Delta R.T.: -0.010 min
 Response: 899585
 Conc: 20.65 ng/ml



#2 Decachlorobiphenyl
 R.T.: 10.326 min
 Delta R.T.: 0.000 min
 Response: 931240
 Conc: 17.15 ng/ml



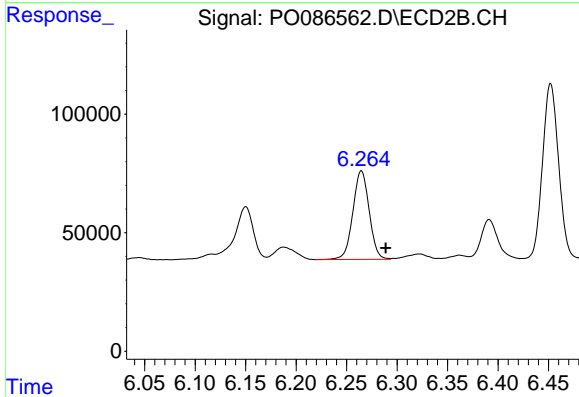
#2 Decachlorobiphenyl
 R.T.: 8.721 min
 Delta R.T.: -0.033 min
 Response: 532334
 Conc: 15.30 ng/ml



#31 AR-1260-1

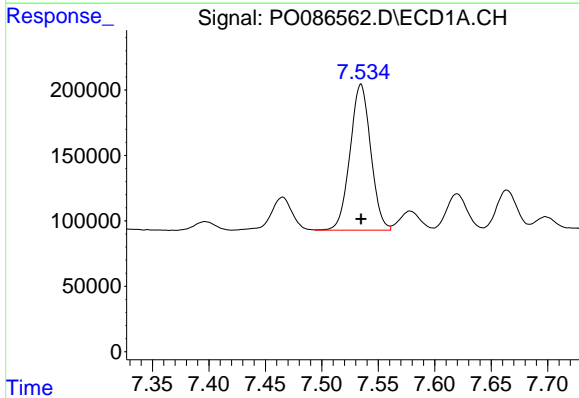
R.T.: 7.276 min
 Delta R.T.: 0.000 min
 Response: 738326
 Conc: 243.96 ng/ml

Instrument :
 ECD_O
 ClientSampleId :
 P030-SS001-0612-01



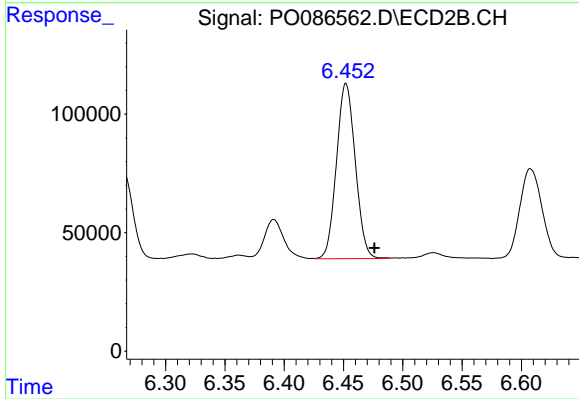
#31 AR-1260-1

R.T.: 6.265 min
 Delta R.T.: -0.024 min
 Response: 419641
 Conc: 215.61 ng/ml



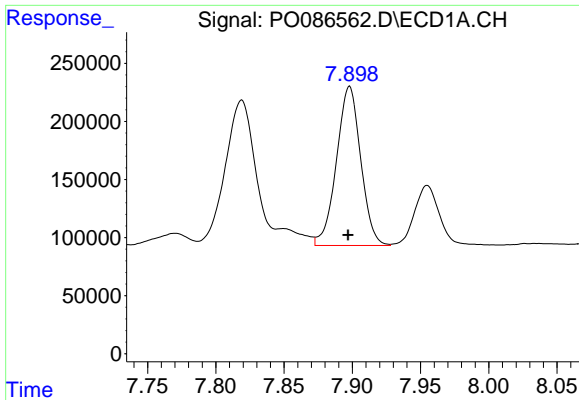
#32 AR-1260-2

R.T.: 7.535 min
 Delta R.T.: 0.000 min
 Response: 1422181
 Conc: 393.14 ng/ml



#32 AR-1260-2

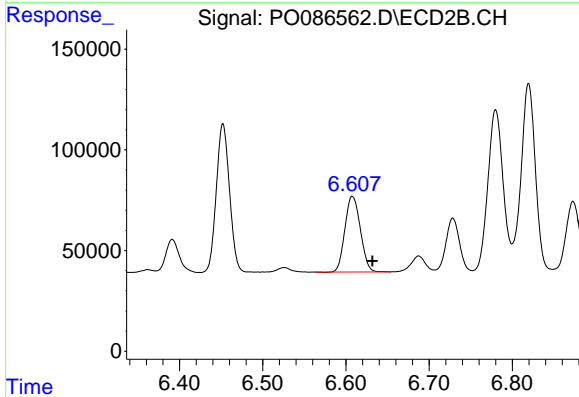
R.T.: 6.452 min
 Delta R.T.: -0.024 min
 Response: 816772
 Conc: 347.52 ng/ml



#33 AR-1260-3

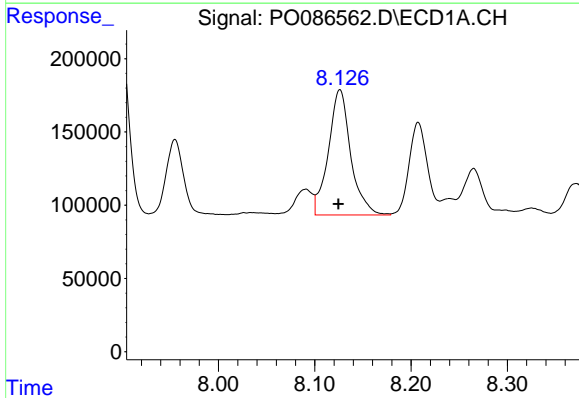
R.T.: 7.898 min
 Delta R.T.: 0.001 min
 Response: 1693967
 Conc: 613.76 ng/ml

Instrument :
 ECD_O
 ClientSampleId :
 P030-SS001-0612-01



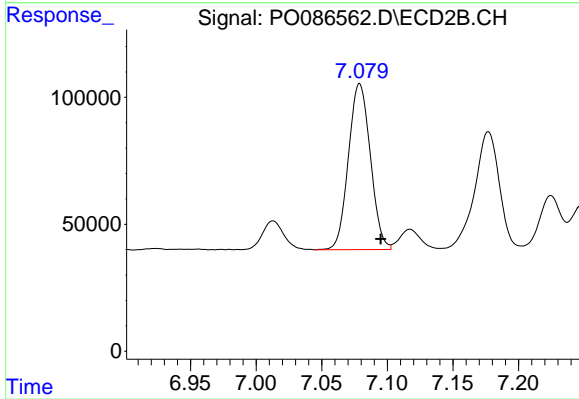
#33 AR-1260-3

R.T.: 6.607 min
 Delta R.T.: -0.024 min
 Response: 484516
 Conc: 225.33 ng/ml



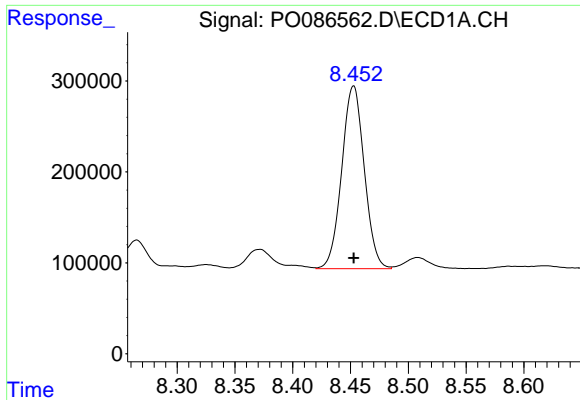
#34 AR-1260-4

R.T.: 8.126 min
 Delta R.T.: 0.002 min
 Response: 1379286
 Conc: 408.80 ng/ml



#34 AR-1260-4

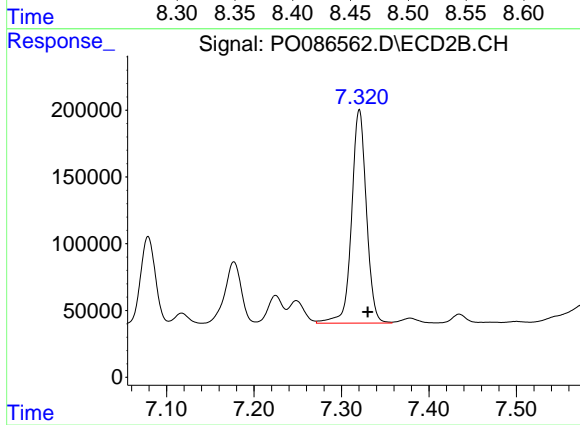
R.T.: 7.079 min
 Delta R.T.: -0.016 min
 Response: 760819
 Conc: 422.53 ng/ml



#35 AR-1260-5

R.T.: 8.453 min
Delta R.T.: 0.000 min
Response: 2716486
Conc: 440.22 ng/ml

Instrument :
ECD_O
ClientSampleId :
P030-SS001-0612-01



#35 AR-1260-5

R.T.: 7.320 min
Delta R.T.: -0.010 min
Response: 1881293
Conc: 434.30 ng/ml