

Data Path : Z:\pestpcbsrv\HPCHEM1\ECD\_0\Data\P0052522\  
 Data File : P0086570.D  
 Signal(s) : Signal #1: ECD1A.CH Signal #2: ECD2B.CH  
 Acq On : 25 May 2022 20:13  
 Operator : YP\AJ  
 Sample : N2895-14  
 Misc :  
 ALS Vial : 43 Sample Multiplier: 1

**Instrument :**  
 ECD\_0  
**ClientSampleId :**  
 P030-SS002-2430-01

**Manual Integrations**  
**APPROVED**

Reviewed By :Yogesh Patel 05/26/2022  
 Supervised By :Ankita Jodhani 05/26/2022

Integration File signal 1: autoint1.e  
 Integration File signal 2: autoint2.e  
 Quant Time: May 26 06:48:33 2022  
 Quant Method : Z:\pestpcbsrv\HPCHEM1\ECD\_0\methods\P0051122.M  
 Quant Title : GC EXTRACTABLES  
 QLast Update : Thu May 19 09:06:34 2022  
 Response via : Initial Calibration  
 Integrator: ChemStation 6890 Scale Mode: Small noise peaks clipped

Volume Inj. : 2 µl  
 Signal #1 Phase : ZB-MR1 Signal #2 Phase: ZB-MR2  
 Signal #1 Info : 30Mx0.32mmx 0.50µ Signal #2 Info : 30M x 0.32mm x 0.25µm

Compound	RT#1	RT#2	Resp#1	Resp#2	ng/ml	ng/ml
-----						
System Monitoring Compounds						
1) SA Tetrachlo...	4.476	3.673	2185936	902264	21.514	20.714
2) SA Decachlor...	10.327	8.721	858775	505340	15.816	14.521
Target Compounds						
31) L7 AR-1260-1	7.275	6.264	34480	9287	11.393	4.772m#
32) L7 AR-1260-2	7.533	6.452	106923	55321	29.557	23.538m
33) L7 AR-1260-3	7.896	6.608	93552	17432	33.896	8.107m#
34) L7 AR-1260-4	8.125	7.078	50733	32685	15.037	18.152
35) L7 AR-1260-5	8.453	7.320	135313	81810	21.928	18.886m
-----						

(f)=RT Delta > 1/2 Window (#)=Amounts differ by > 25% (m)=manual int.

Data Path : Z:\pestpcbsrv\HPCHEM1\ECD\_0\Data\P0052522\  
 Data File : P0086570.D  
 Signal(s) : Signal #1: ECD1A.CH Signal #2: ECD2B.CH  
 Acq On : 25 May 2022 20:13  
 Operator : YP\AJ  
 Sample : N2895-14  
 Misc :  
 ALS Vial : 43 Sample Multiplier: 1

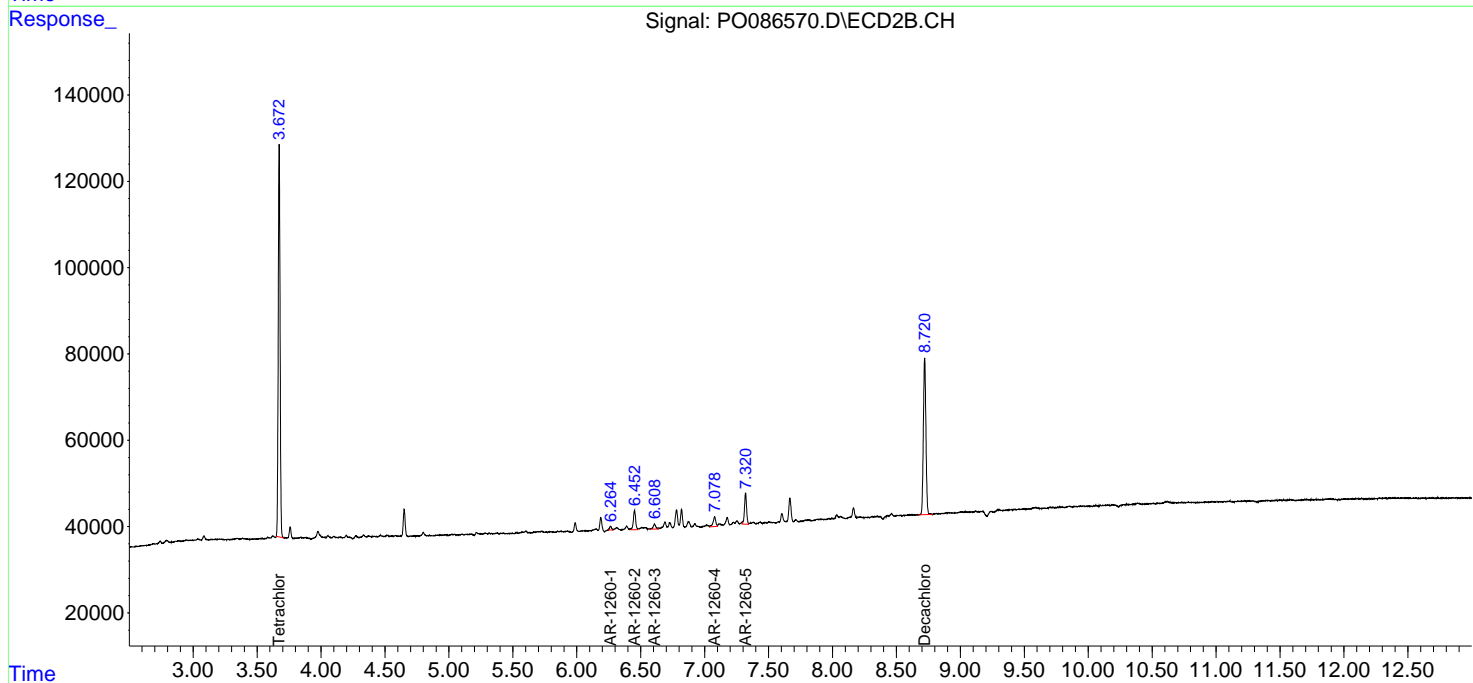
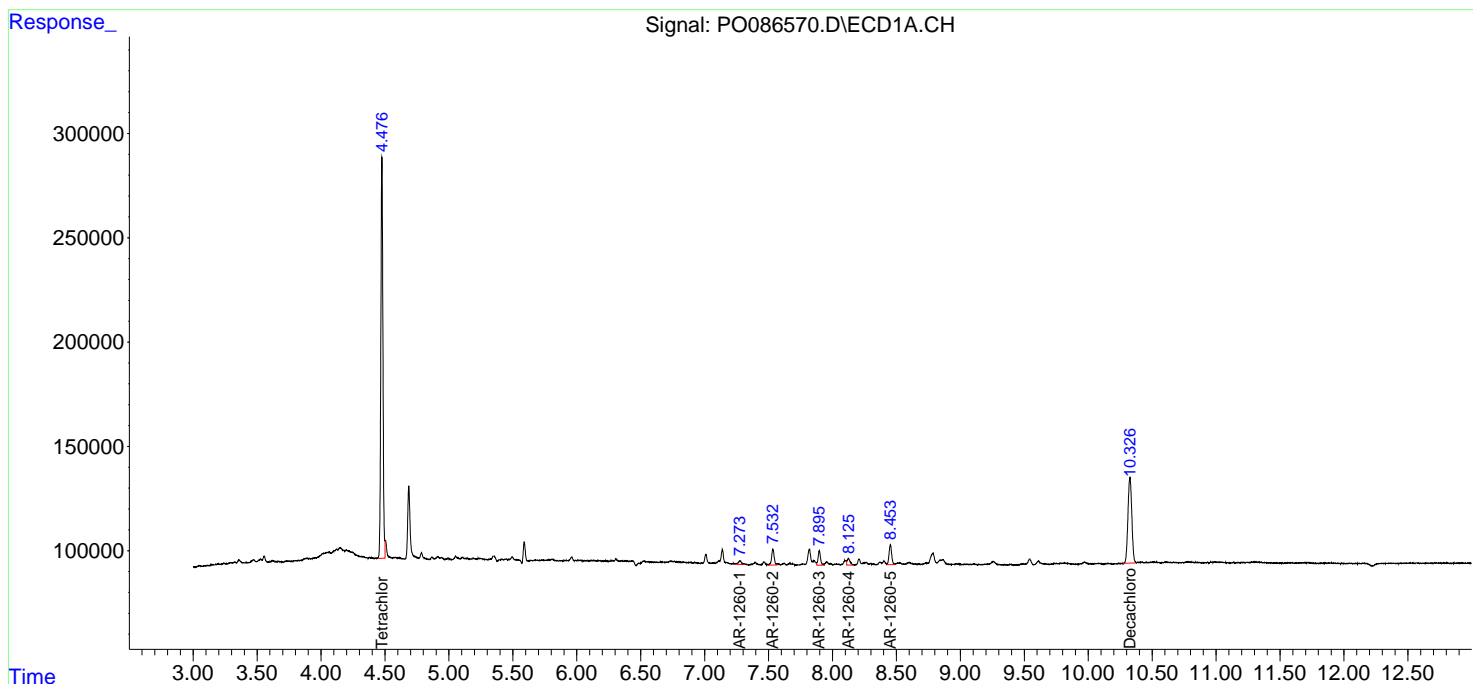
Instrument :  
 ECD\_0  
 ClientSampleId :  
 P030-SS002-2430-01

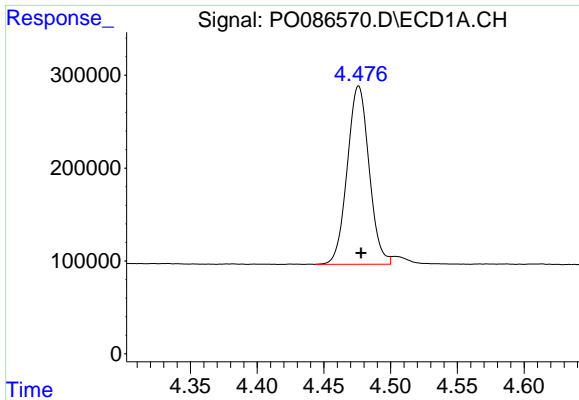
Manual Integrations  
 APPROVED

Reviewed By :Yogesh Patel 05/26/2022  
 Supervised By :Ankita Jodhani 05/26/2022

Integration File signal 1: autoint1.e  
 Integration File signal 2: autoint2.e  
 Quant Time: May 26 06:48:33 2022  
 Quant Method : Z:\pestpcbsrv\HPCHEM1\ECD\_0\methods\P0051122.M  
 Quant Title : GC EXTRACTABLES  
 QLast Update : Thu May 19 09:06:34 2022  
 Response via : Initial Calibration  
 Integrator: ChemStation 6890 Scale Mode: Small noise peaks clipped

Volume Inj. : 2 µl  
 Signal #1 Phase : ZB-MR1 Signal #2 Phase: ZB-MR2  
 Signal #1 Info : 30Mx0.32mmx 0.50µ Signal #2 Info : 30M x 0.32mm x 0.25µm



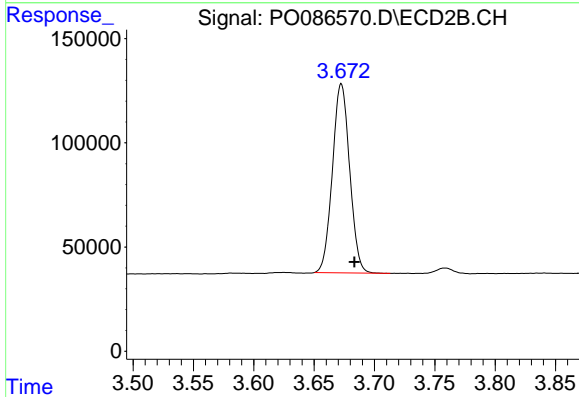


#1 Tetrachloro-m-xylene  
 R.T.: 4.476 min  
 Delta R.T.: -0.002 min  
 Response: 2185936  
 Conc: 21.51 ng/ml

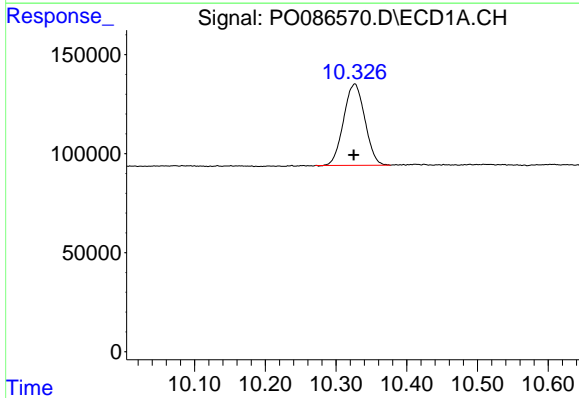
Instrument :  
 ECD\_O  
 ClientSampleId :  
 P030-SS002-2430-01

Manual Integrations  
 APPROVED

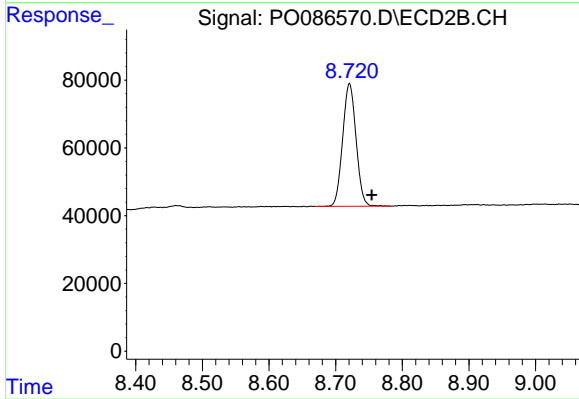
Reviewed By :Yogesh Patel 05/26/2022  
 Supervised By :Ankita Jodhani 05/26/2022



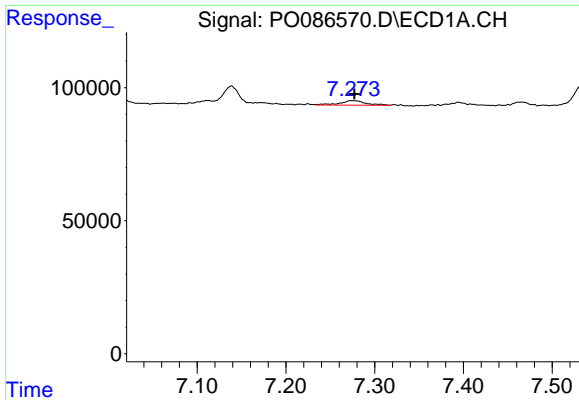
#1 Tetrachloro-m-xylene  
 R.T.: 3.673 min  
 Delta R.T.: -0.011 min  
 Response: 902264  
 Conc: 20.71 ng/ml



#2 Decachlorobiphenyl  
 R.T.: 10.327 min  
 Delta R.T.: 0.002 min  
 Response: 858775  
 Conc: 15.82 ng/ml



#2 Decachlorobiphenyl  
 R.T.: 8.721 min  
 Delta R.T.: -0.033 min  
 Response: 505340  
 Conc: 14.52 ng/ml



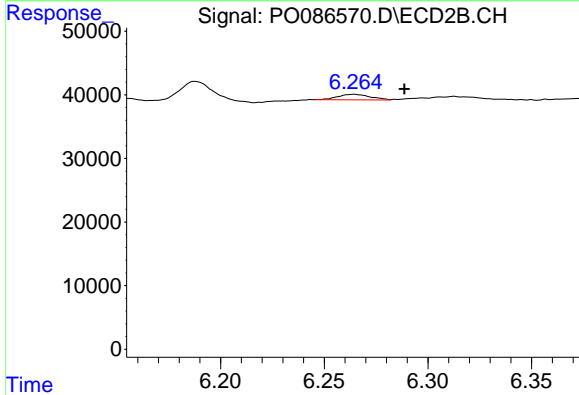
#31 AR-1260-1

R.T.: 7.275 min  
 Delta R.T.: -0.002 min  
 Response: 34480  
 Conc: 11.39 ng/ml

Instrument :  
 ECD\_O  
 ClientSampleId :  
 P030-SS002-2430-01

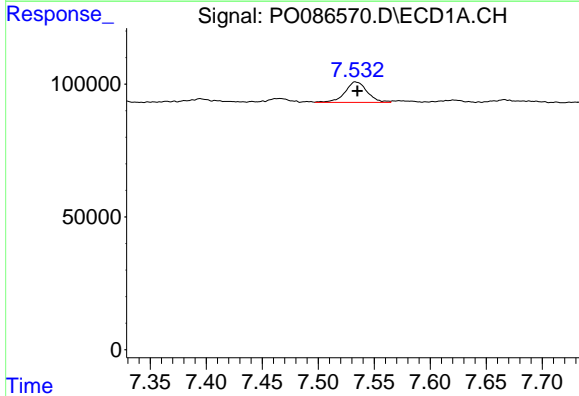
Manual Integrations  
 APPROVED

Reviewed By :Yogesh Patel 05/26/2022  
 Supervised By :Ankita Jodhani 05/26/2022



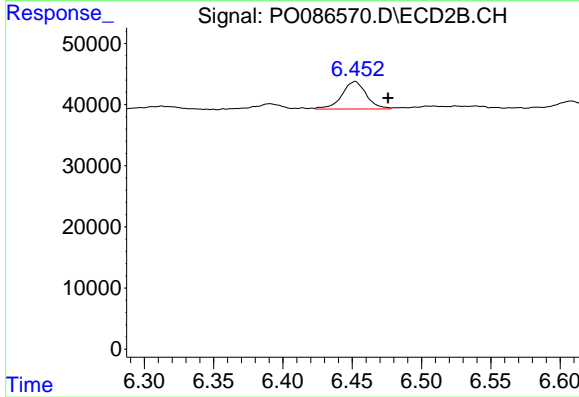
#31 AR-1260-1

R.T.: 6.264 min  
 Delta R.T.: -0.025 min  
 Response: 9287  
 Conc: 4.77 ng/ml m



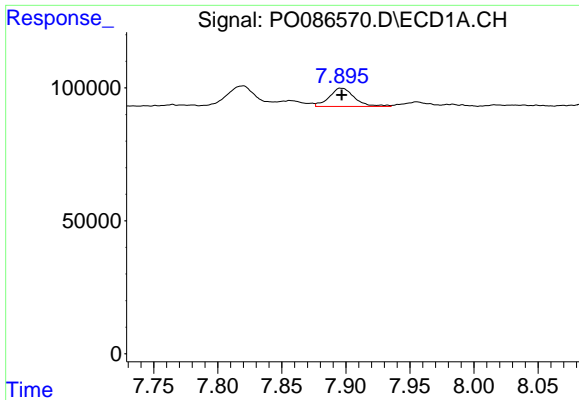
#32 AR-1260-2

R.T.: 7.533 min  
 Delta R.T.: -0.001 min  
 Response: 106923  
 Conc: 29.56 ng/ml



#32 AR-1260-2

R.T.: 6.452 min  
 Delta R.T.: -0.024 min  
 Response: 55321  
 Conc: 23.54 ng/ml m



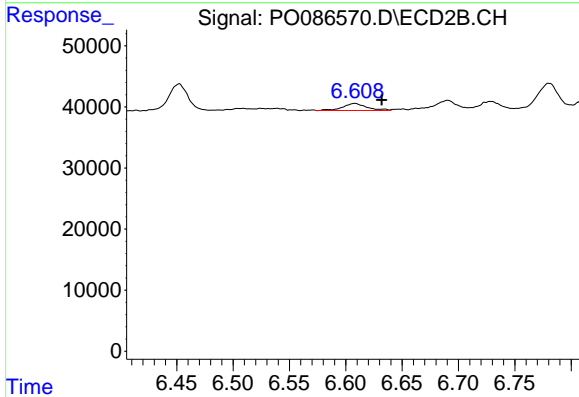
#33 AR-1260-3

R.T.: 7.896 min  
 Delta R.T.: 0.000 min  
 Response: 93552  
 Conc: 33.90 ng/ml

Instrument :  
 ECD\_O  
 ClientSampleId :  
 P030-SS002-2430-01

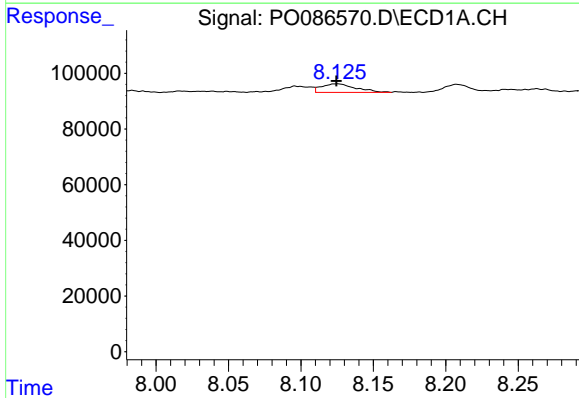
Manual Integrations  
 APPROVED

Reviewed By :Yogesh Patel 05/26/2022  
 Supervised By :Ankita Jodhani 05/26/2022



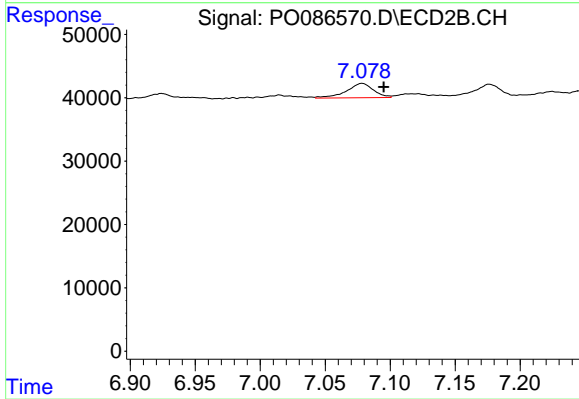
#33 AR-1260-3

R.T.: 6.608 min  
 Delta R.T.: -0.024 min  
 Response: 17432  
 Conc: 8.11 ng/ml m



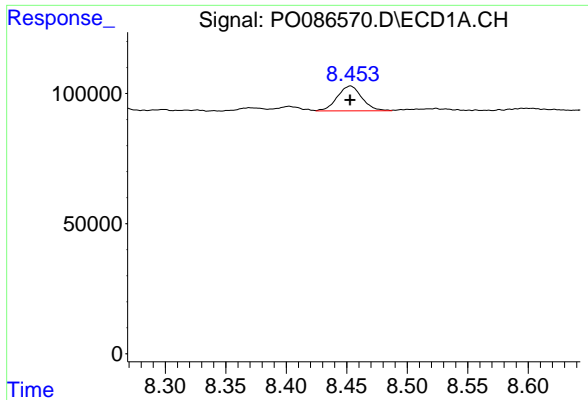
#34 AR-1260-4

R.T.: 8.125 min  
 Delta R.T.: 0.000 min  
 Response: 50733  
 Conc: 15.04 ng/ml



#34 AR-1260-4

R.T.: 7.078 min  
 Delta R.T.: -0.017 min  
 Response: 32685  
 Conc: 18.15 ng/ml



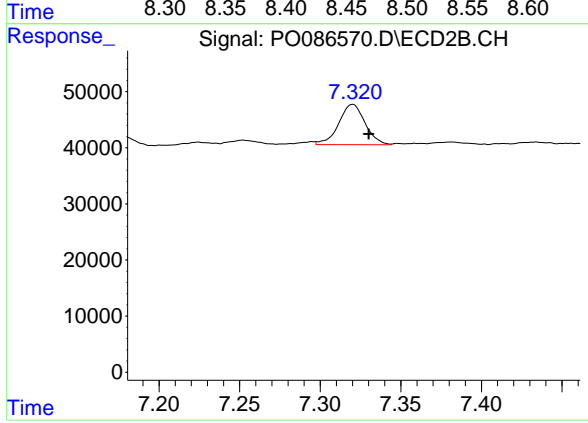
#35 AR-1260-5

R.T.: 8.453 min  
 Delta R.T.: 0.000 min  
 Response: 135313  
 Conc: 21.93 ng/ml

Instrument :  
 ECD\_O  
 ClientSampleId :  
 P030-SS002-2430-01

Manual Integrations  
 APPROVED

Reviewed By :Yogesh Patel 05/26/2022  
 Supervised By :Ankita Jodhani 05/26/2022



#35 AR-1260-5

R.T.: 7.320 min  
 Delta R.T.: -0.010 min  
 Response: 81810  
 Conc: 18.89 ng/ml m