

Data Path : Z:\pestpcbsrv\HPCHEM1\ECD_0\Data\P0052522\
 Data File : P0086584.D
 Signal(s) : Signal #1: ECD1A.CH Signal #2: ECD2B.CH
 Acq On : 26 May 2022 00:48
 Operator : YP\AJ
 Sample : N3031-05
 Misc :
 ALS Vial : 55 Sample Multiplier: 1

Instrument :
 ECD_0
ClientSampleId :
 PIPE-9-0524

Manual Integrations
APPROVED

Reviewed By :Yogesh Patel 05/26/2022
 Supervised By :Ankita Jodhani 05/26/2022

Integration File signal 1: autoint1.e
 Integration File signal 2: autoint2.e
 Quant Time: May 26 12:09:04 2022
 Quant Method : Z:\pestpcbsrv\HPCHEM1\ECD_0\methods\P0051122.M
 Quant Title : GC EXTRACTABLES
 QLast Update : Thu May 19 09:06:34 2022
 Response via : Initial Calibration
 Integrator: ChemStation 6890 Scale Mode: Small noise peaks clipped

Volume Inj. : 2 µl
 Signal #1 Phase : ZB-MR1 Signal #2 Phase: ZB-MR2
 Signal #1 Info : 30Mx0.32mmx 0.50µ Signal #2 Info : 30M x 0.32mm x 0.25µm

Compound	RT#1	RT#2	Resp#1	Resp#2	ng/ml	ng/ml

System Monitoring Compounds						
1) SA Tetrachlo...	4.476	3.671	2858871	1189396	28.137	27.306
2) SA Decachlor...	10.325	8.720	1720314	1003712	31.682	28.842
Target Compounds						
21) L5 AR-1248-1	5.656	4.792	245958	133176	121.770m	137.152
22) L5 AR-1248-2	5.935	5.012	134836	44182	49.980m	33.219 #
23) L5 AR-1248-3	6.140	5.085	167243	13180	56.367	9.577 #
24) L5 AR-1248-4	6.545	5.257	53371	76094	16.580m	47.524 #
25) L5 AR-1248-5	6.603	5.628	267322	58704	85.893m	37.367 #

(f)=RT Delta > 1/2 Window (#)=Amounts differ by > 25% (m)=manual int.

Data Path : Z:\pestpcbsrv\HPCHEM1\ECD_0\Data\P0052522\
 Data File : P0086584.D
 Signal(s) : Signal #1: ECD1A.CH Signal #2: ECD2B.CH
 Acq On : 26 May 2022 00:48
 Operator : YP\AJ
 Sample : N3031-05
 Misc :
 ALS Vial : 55 Sample Multiplier: 1

Instrument :

ECD_0

ClientSampleId :

PIPE-9-0524

Manual Integrations

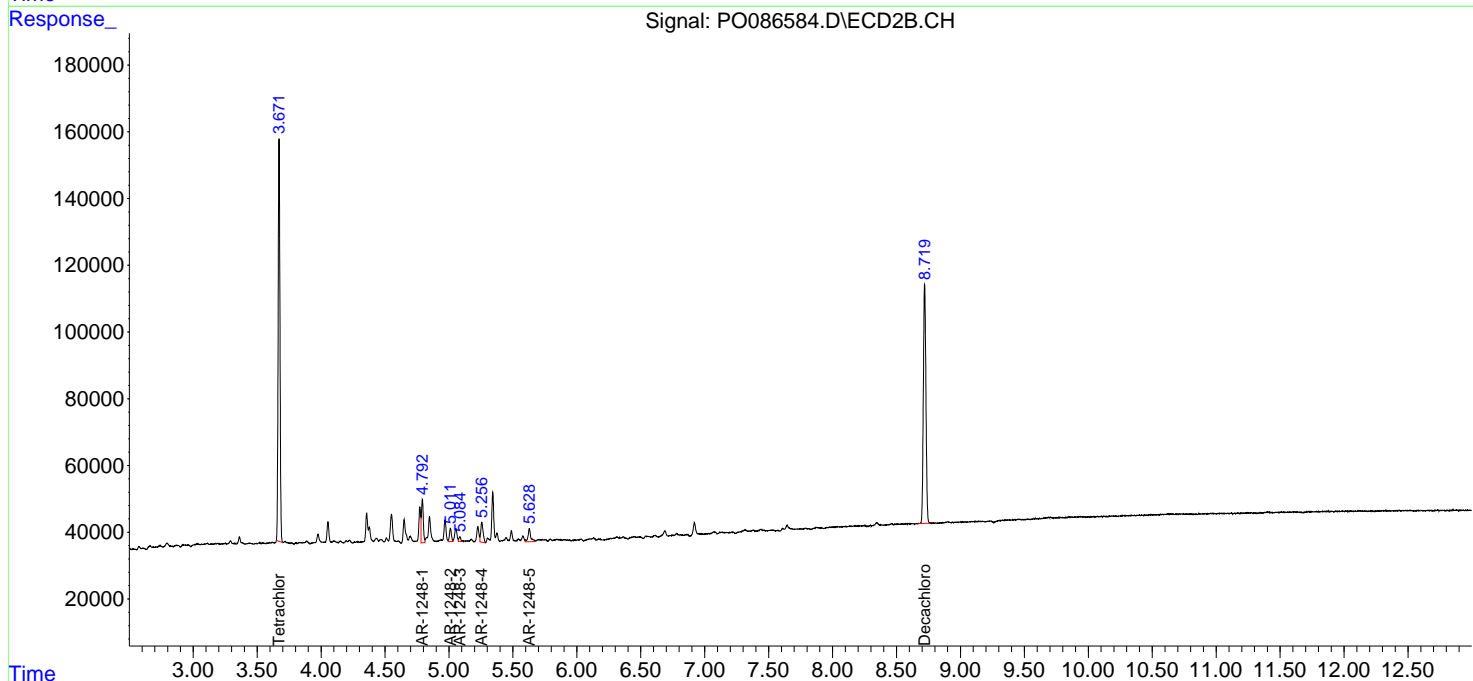
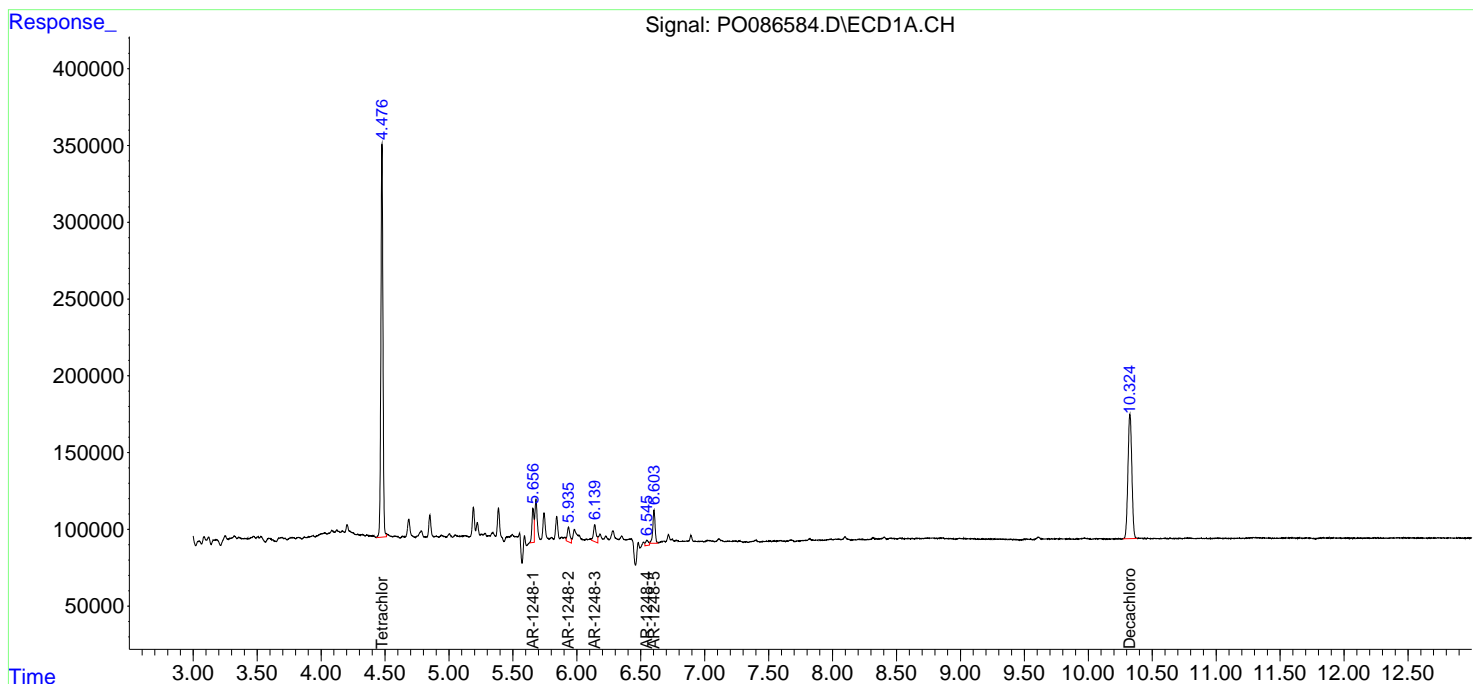
APPROVED

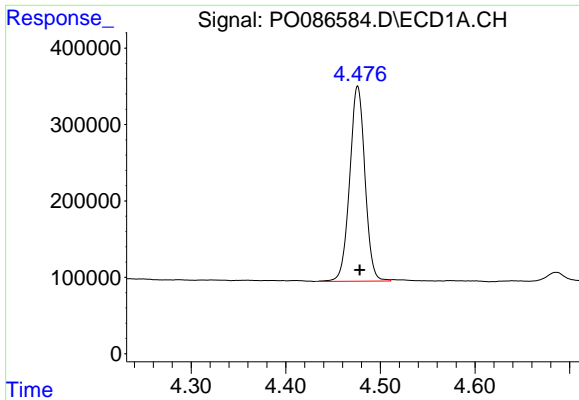
Reviewed By :Yogesh Patel 05/26/2022

Supervised By :Ankita Jodhani 05/26/2022

Integration File signal 1: autoint1.e
 Integration File signal 2: autoint2.e
 Quant Time: May 26 12:09:04 2022
 Quant Method : Z:\pestpcbsrv\HPCHEM1\ECD_0\methods\P0051122.M
 Quant Title : GC EXTRACTABLES
 QLast Update : Thu May 19 09:06:34 2022
 Response via : Initial Calibration
 Integrator: ChemStation 6890 Scale Mode: Small noise peaks clipped

Volume Inj. : 2 µl
 Signal #1 Phase : ZB-MR1 Signal #2 Phase: ZB-MR2
 Signal #1 Info : 30Mx0.32mmx 0.50µ Signal #2 Info : 30M x 0.32mm x 0.25µm





#1 Tetrachloro-m-xylene

R.T.: 4.476 min
 Delta R.T.: -0.002 min
 Response: 2858871
 Conc: 28.14 ng/ml

Instrument :

ECD_O

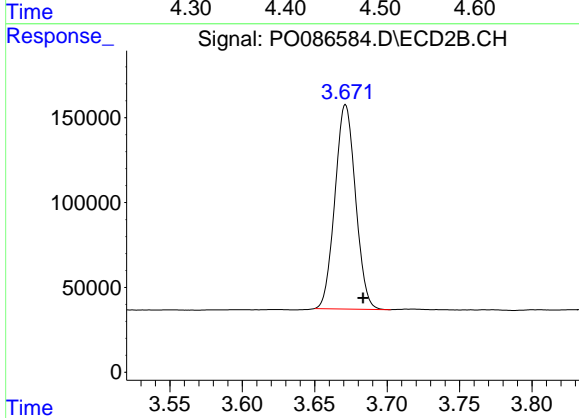
ClientSampleId :

PIPE-9-0524

Manual Integrations

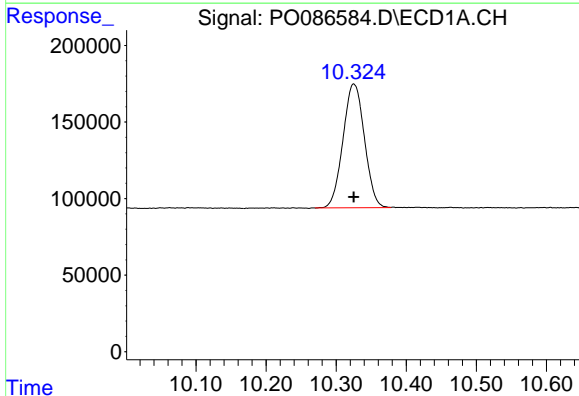
APPROVED

Reviewed By :Yogesh Patel 05/26/2022
 Supervised By :Ankita Jodhani 05/26/2022



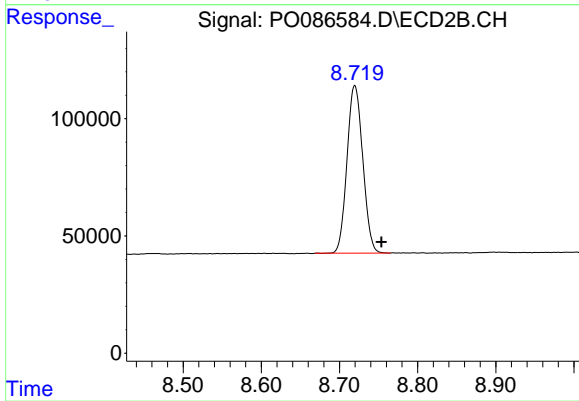
#1 Tetrachloro-m-xylene

R.T.: 3.671 min
 Delta R.T.: -0.012 min
 Response: 1189396
 Conc: 27.31 ng/ml



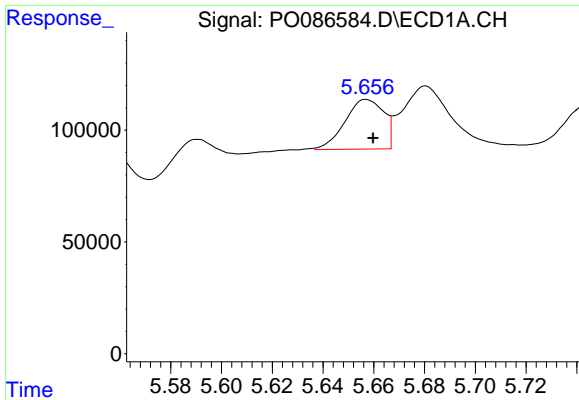
#2 Decachlorobiphenyl

R.T.: 10.325 min
 Delta R.T.: 0.000 min
 Response: 1720314
 Conc: 31.68 ng/ml



#2 Decachlorobiphenyl

R.T.: 8.720 min
 Delta R.T.: -0.034 min
 Response: 1003712
 Conc: 28.84 ng/ml



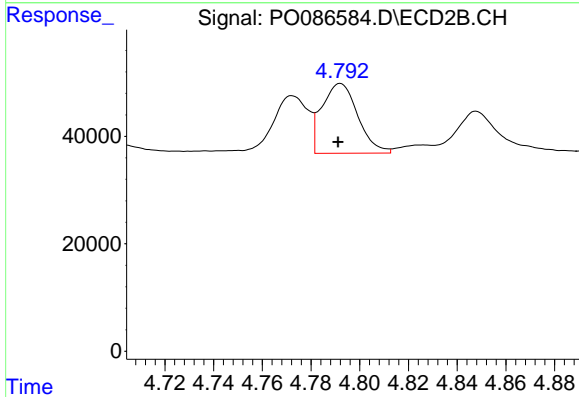
#21 AR-1248-1

R.T.: 5.656 min
 Delta R.T.: -0.003 min
 Response: 245958
 Conc: 121.77 ng/ml

Instrument :
 ECD_O
 ClientSampleId :
 PIPE-9-0524

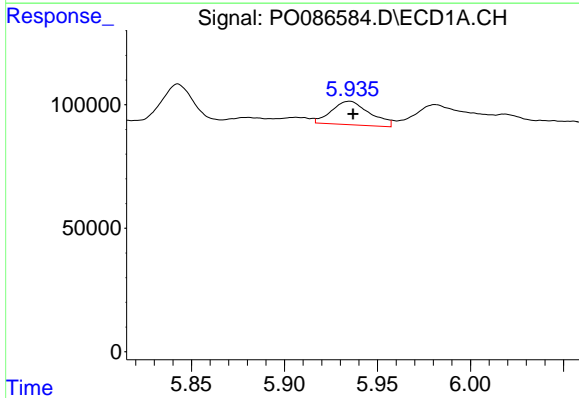
Manual Integrations
 APPROVED

Reviewed By :Yogesh Patel 05/26/2022
 Supervised By :Ankita Jodhani 05/26/2022



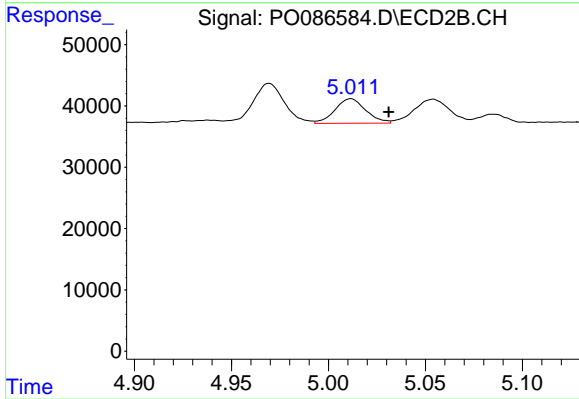
#21 AR-1248-1

R.T.: 4.792 min
 Delta R.T.: 0.000 min
 Response: 133176
 Conc: 137.15 ng/ml



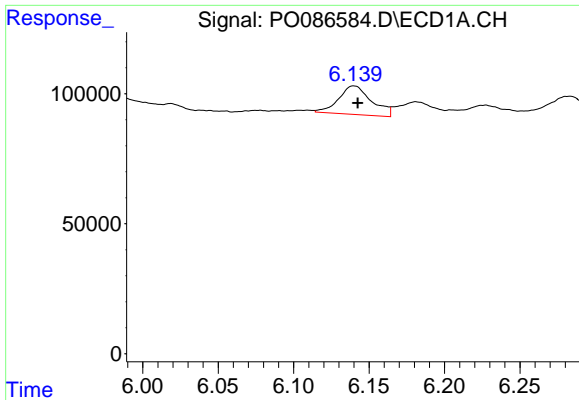
#22 AR-1248-2

R.T.: 5.935 min
 Delta R.T.: -0.002 min
 Response: 134836
 Conc: 49.98 ng/ml m



#22 AR-1248-2

R.T.: 5.012 min
 Delta R.T.: -0.020 min
 Response: 44182
 Conc: 33.22 ng/ml



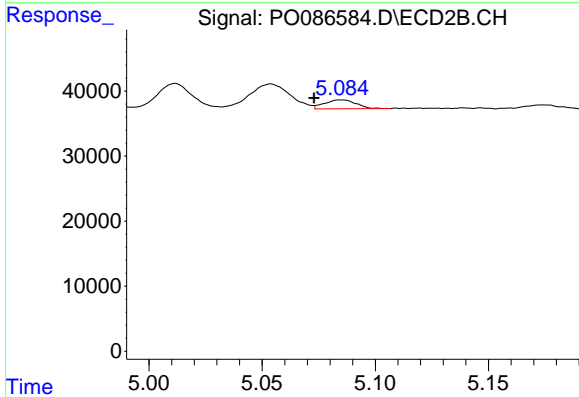
#23 AR-1248-3

R.T.: 6.140 min
 Delta R.T.: -0.003 min
 Response: 167243
 Conc: 56.37 ng/ml

Instrument :
 ECD_O
 ClientSampleId :
 PIPE-9-0524

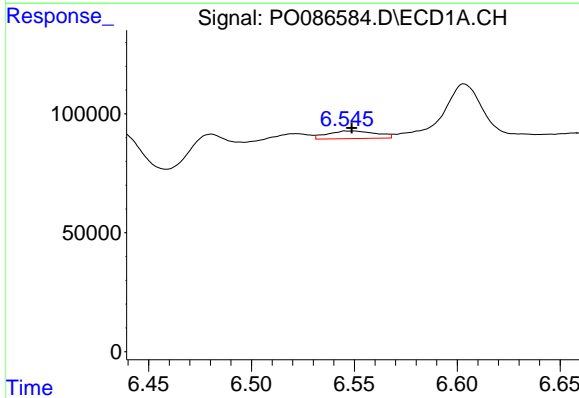
Manual Integrations
 APPROVED

Reviewed By :Yogesh Patel 05/26/2022
 Supervised By :Ankita Jodhani 05/26/2022



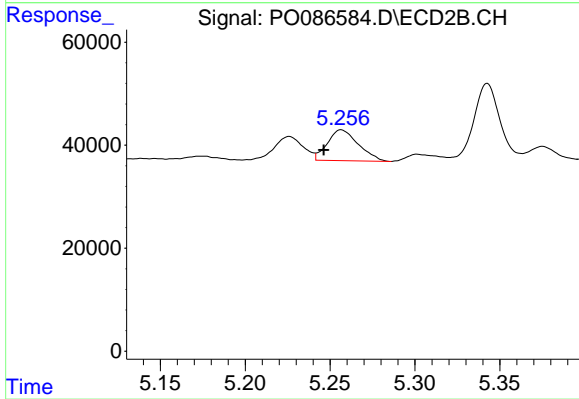
#23 AR-1248-3

R.T.: 5.085 min
 Delta R.T.: 0.012 min
 Response: 13180
 Conc: 9.58 ng/ml



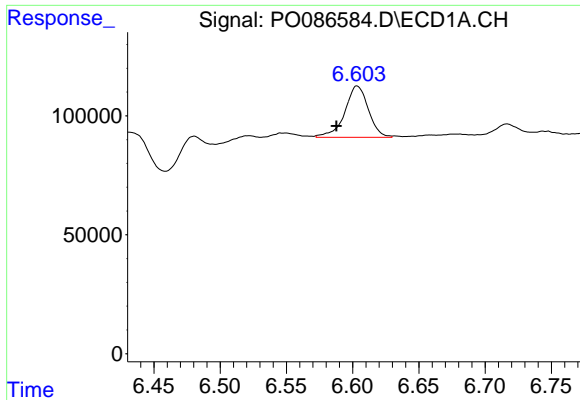
#24 AR-1248-4

R.T.: 6.545 min
 Delta R.T.: -0.004 min
 Response: 53371
 Conc: 16.58 ng/ml m



#24 AR-1248-4

R.T.: 5.257 min
 Delta R.T.: 0.010 min
 Response: 76094
 Conc: 47.52 ng/ml



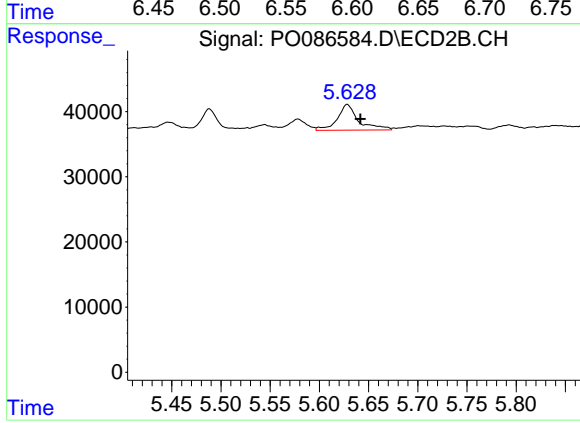
#25 AR-1248-5

R.T.: 6.603 min
 Delta R.T.: 0.015 min
 Response: 267322
 Conc: 85.89 ng/ml

Instrument :
 ECD_O
 ClientSampleId :
 PIPE-9-0524

Manual Integrations
 APPROVED

Reviewed By :Yogesh Patel 05/26/2022
 Supervised By :Ankita Jodhani 05/26/2022



#25 AR-1248-5

R.T.: 5.628 min
 Delta R.T.: -0.013 min
 Response: 58704
 Conc: 37.37 ng/ml