

Data Path : Z:\pestpcbsrv\HPCHEM1\ECD_0\Data\P0052522\
 Data File : P0086587.D
 Signal(s) : Signal #1: ECD1A.CH Signal #2: ECD2B.CH
 Acq On : 26 May 2022 1:37
 Operator : YP\AJ
 Sample : N2922-10MS
 Misc :
 ALS Vial : 58 Sample Multiplier: 1

Instrument :
 ECD_0
ClientSampleId :
 P024-SS001-2430-01MS

Integration File signal 1: autoint1.e
 Integration File signal 2: autoint2.e
 Quant Time: May 26 06:57:32 2022
 Quant Method : Z:\pestpcbsrv\HPCHEM1\ECD_0\methods\P0051122.M
 Quant Title : GC EXTRACTABLES
 QLast Update : Thu May 19 09:06:34 2022
 Response via : Initial Calibration
 Integrator: ChemStation 6890 Scale Mode: Small noise peaks clipped

Volume Inj. : 2 µl
 Signal #1 Phase : ZB-MR2 Signal #2 Phase: ZB-MR2
 Signal #1 Info : 30Mx0.32mmx 0.50µ Signal #2 Info : 30M x 0.32mm x 0.25µm

Compound	RT#1	RT#2	Resp#1	Resp#2	ng/ml	ng/ml

System Monitoring Compounds						
1) SA Tetrachlo...	4.475	3.671	2525000	983655	24.851	22.583
2) SA Decachlor...	10.325	8.719	1141732	673975	21.027	19.367
Target Compounds						
3) L1 AR-1016-1	5.657	4.773	2126599	973382	665.419	623.260
4) L1 AR-1016-2	5.680	4.792	2977313	1321344	669.746	631.022
5) L1 AR-1016-3	5.743	4.969	1848552	698409	674.178	631.835
6) L1 AR-1016-4	5.842	5.011	1520331	545141	685.899	591.339
7) L1 AR-1016-5	6.140	5.226	1428951	679512	689.622	601.789
31) L7 AR-1260-1	7.276	6.263	2414573	1366644	797.833	702.169
32) L7 AR-1260-2	7.533	6.451	2882635	1710988	796.860	727.980
33) L7 AR-1260-3	7.896	6.605	2049843	1563609	742.697	727.168
34) L7 AR-1260-4	8.123	7.078	2330998	1197746	690.874	665.180
35) L7 AR-1260-5	8.451	7.319	4093700	2985772	663.407	689.265

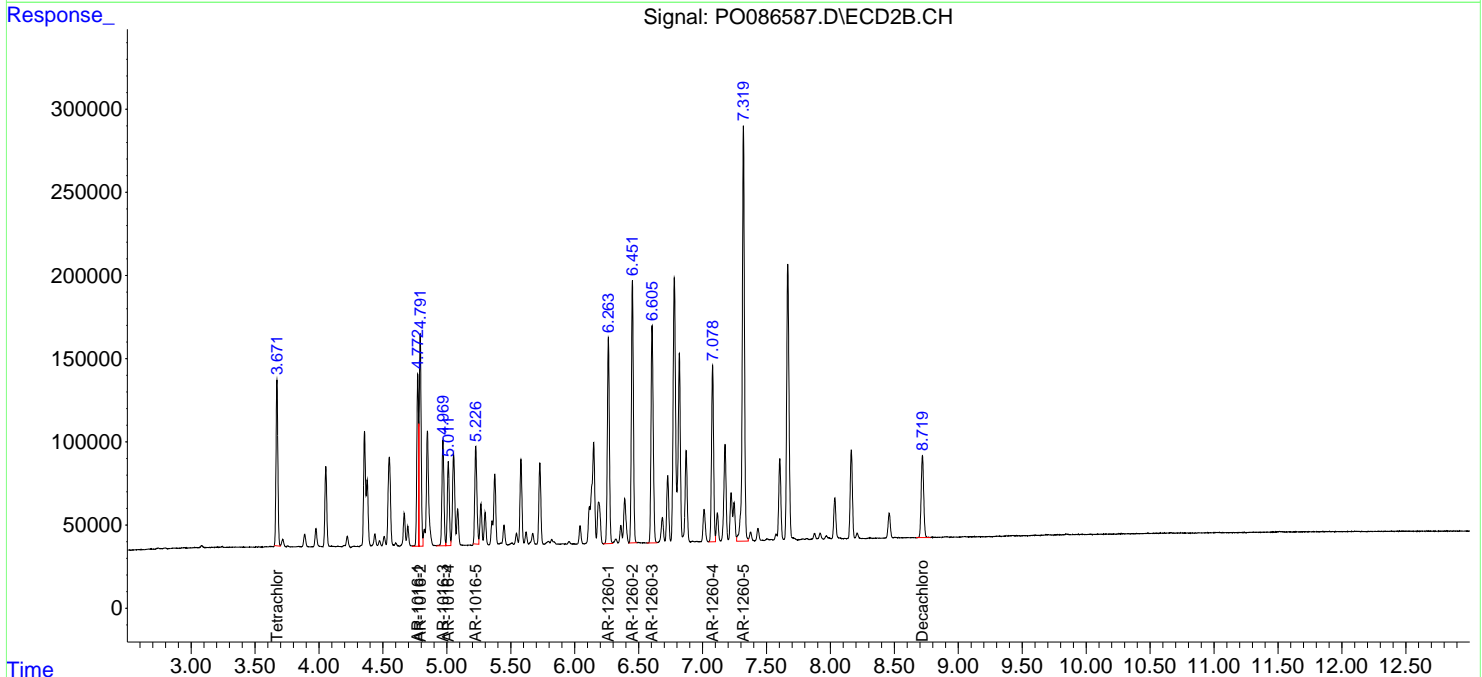
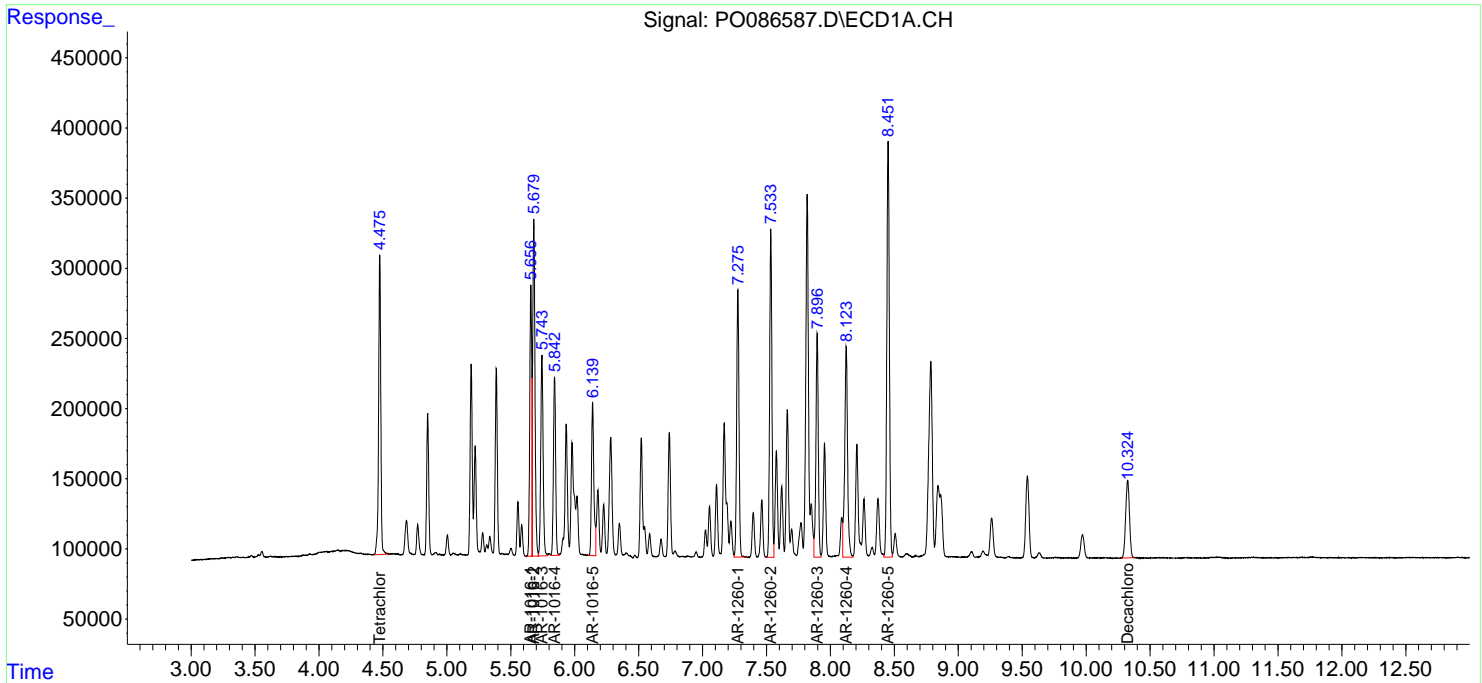
(f)=RT Delta > 1/2 Window (#)=Amounts differ by > 25% (m)=manual int.

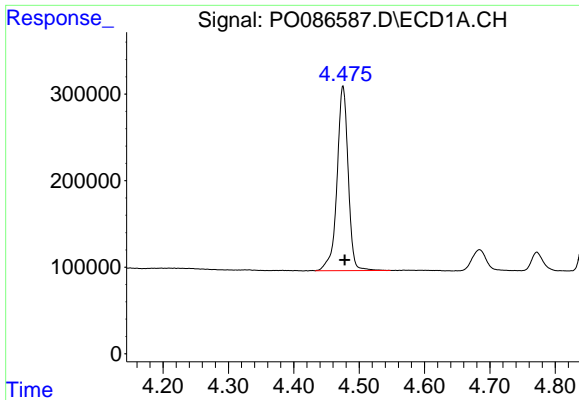
Data Path : Z:\pestpcbsrv\HPCHEM1\ECD_O\Data\P0052522\
 Data File : P0086587.D
 Signal(s) : Signal #1: ECD1A.CH Signal #2: ECD2B.CH
 Acq On : 26 May 2022 1:37
 Operator : YP\AJ
 Sample : N2922-10MS
 Misc :
 ALS Vial : 58 Sample Multiplier: 1

Instrument :
 ECD_O
 ClientSampleId :
 P024-SS001-2430-01MS

Integration File signal 1: autoint1.e
 Integration File signal 2: autoint2.e
 Quant Time: May 26 06:57:32 2022
 Quant Method : Z:\pestpcbsrv\HPCHEM1\ECD_O\methods\P0051122.M
 Quant Title : GC EXTRACTABLES
 QLast Update : Thu May 19 09:06:34 2022
 Response via : Initial Calibration
 Integrator: ChemStation 6890 Scale Mode: Small noise peaks clipped

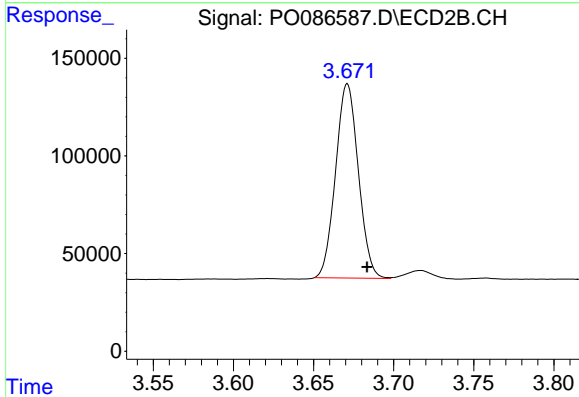
Volume Inj. : 2 µl
 Signal #1 Phase : ZB-MR1 Signal #2 Phase: ZB-MR2
 Signal #1 Info : 30Mx0.32mmx 0.50µ Signal #2 Info : 30M x 0.32mm x 0.25µm



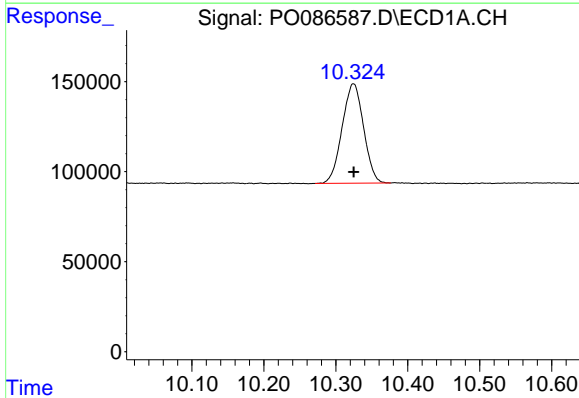


#1 Tetrachloro-m-xylene
 R.T.: 4.475 min
 Delta R.T.: -0.003 min
 Response: 2525000
 Conc: 24.85 ng/ml

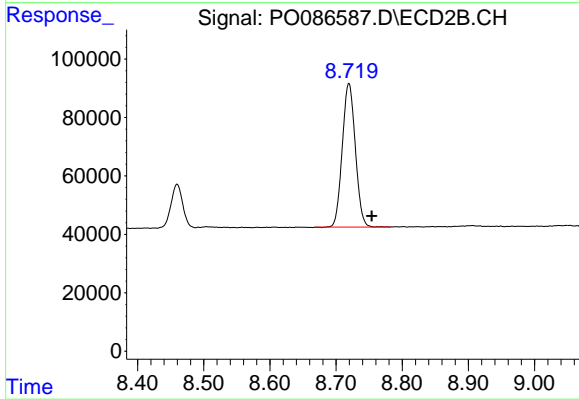
Instrument :
 ECD_O
 ClientSampleId :
 P024-SS001-2430-01MS



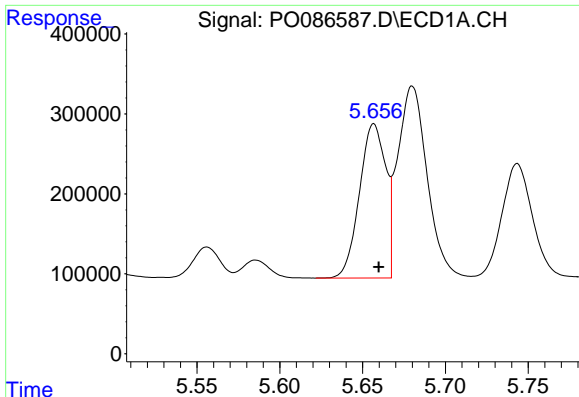
#1 Tetrachloro-m-xylene
 R.T.: 3.671 min
 Delta R.T.: -0.012 min
 Response: 983655
 Conc: 22.58 ng/ml



#2 Decachlorobiphenyl
 R.T.: 10.325 min
 Delta R.T.: 0.000 min
 Response: 1141732
 Conc: 21.03 ng/ml



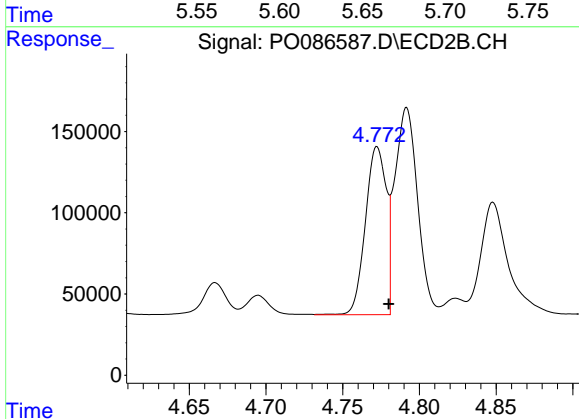
#2 Decachlorobiphenyl
 R.T.: 8.719 min
 Delta R.T.: -0.034 min
 Response: 673975
 Conc: 19.37 ng/ml



#3 AR-1016-1

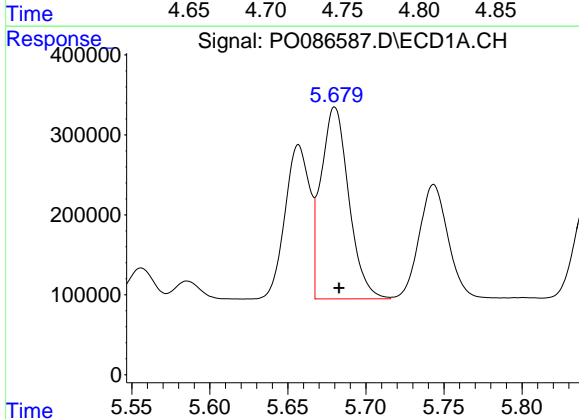
R.T.: 5.657 min
 Delta R.T.: -0.003 min
 Response: 2126599
 Conc: 665.42 ng/ml

Instrument :
 ECD_O
 ClientSampleId :
 P024-SS001-2430-01MS



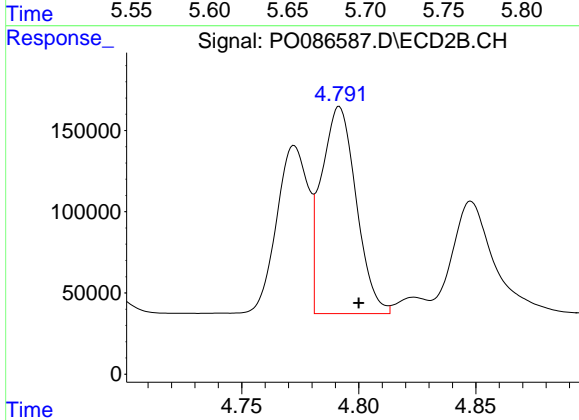
#3 AR-1016-1

R.T.: 4.773 min
 Delta R.T.: -0.008 min
 Response: 973382
 Conc: 623.26 ng/ml



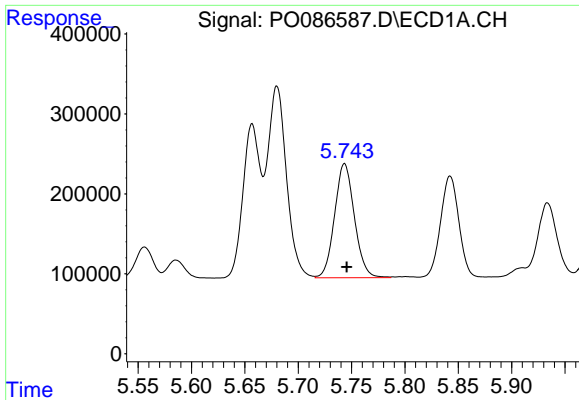
#4 AR-1016-2

R.T.: 5.680 min
 Delta R.T.: -0.003 min
 Response: 2977313
 Conc: 669.75 ng/ml



#4 AR-1016-2

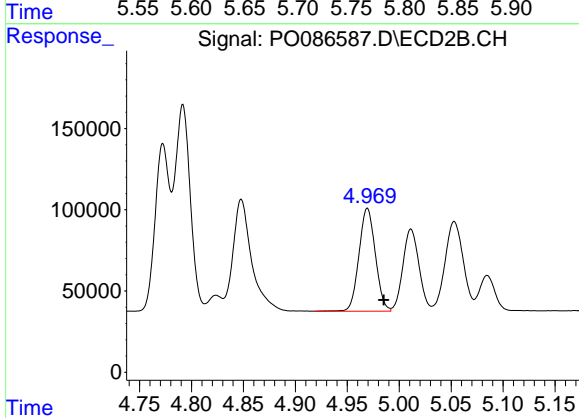
R.T.: 4.792 min
 Delta R.T.: -0.008 min
 Response: 1321344
 Conc: 631.02 ng/ml



#5 AR-1016-3

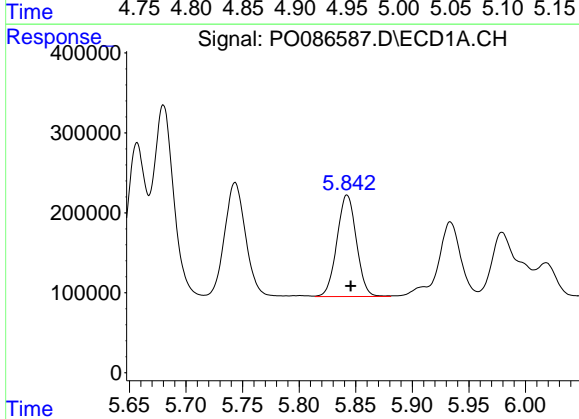
R.T.: 5.743 min
 Delta R.T.: -0.002 min
 Response: 1848552
 Conc: 674.18 ng/ml

Instrument :
 ECD_O
 ClientSampleId :
 P024-SS001-2430-01MS



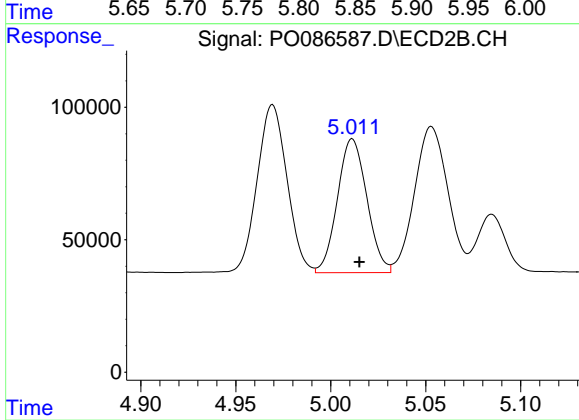
#5 AR-1016-3

R.T.: 4.969 min
 Delta R.T.: -0.016 min
 Response: 698409
 Conc: 631.83 ng/ml



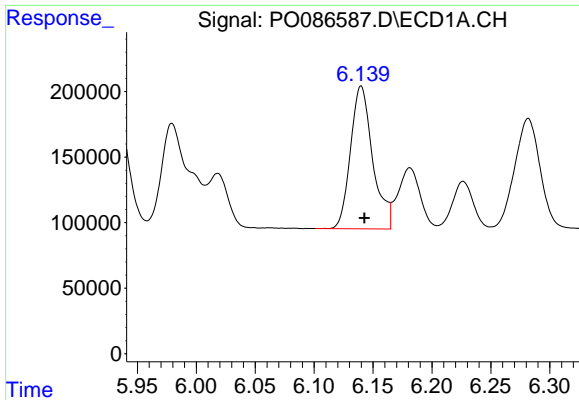
#6 AR-1016-4

R.T.: 5.842 min
 Delta R.T.: -0.003 min
 Response: 1520331
 Conc: 685.90 ng/ml



#6 AR-1016-4

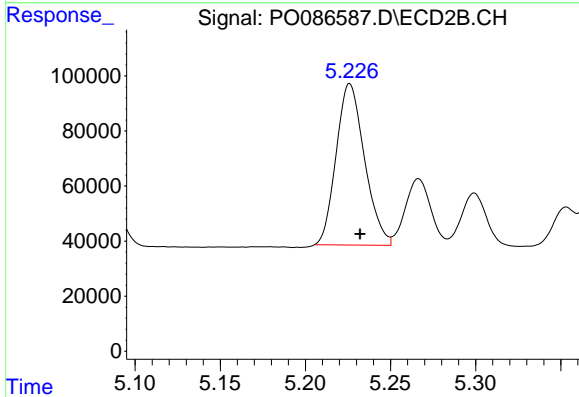
R.T.: 5.011 min
 Delta R.T.: -0.004 min
 Response: 545141
 Conc: 591.34 ng/ml



#7 AR-1016-5

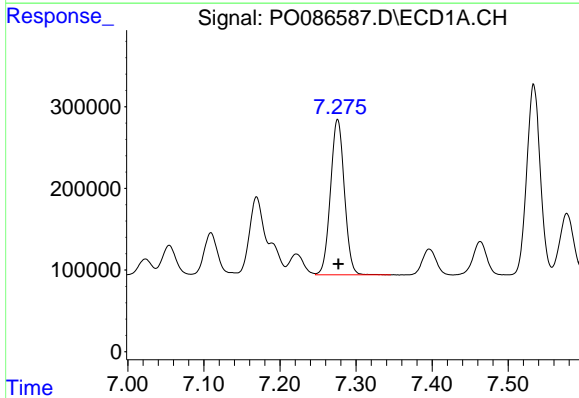
R.T.: 6.140 min
 Delta R.T.: -0.003 min
 Response: 1428951
 Conc: 689.62 ng/ml

Instrument :
 ECD_O
 ClientSampleId :
 P024-SS001-2430-01MS



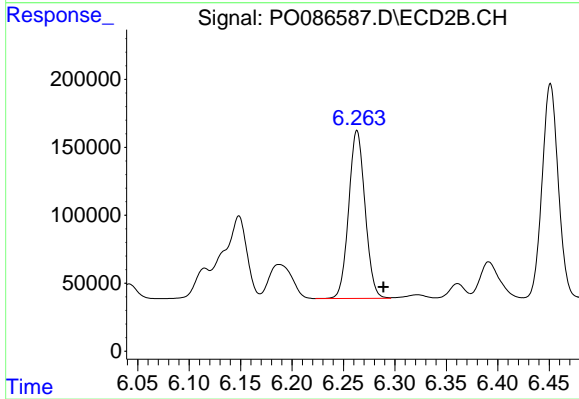
#7 AR-1016-5

R.T.: 5.226 min
 Delta R.T.: -0.006 min
 Response: 679512
 Conc: 601.79 ng/ml



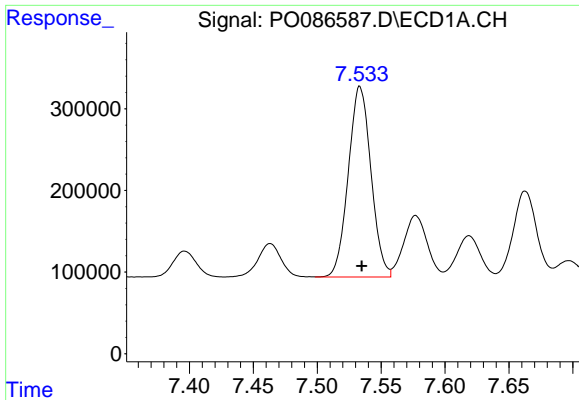
#31 AR-1260-1

R.T.: 7.276 min
 Delta R.T.: -0.001 min
 Response: 2414573
 Conc: 797.83 ng/ml



#31 AR-1260-1

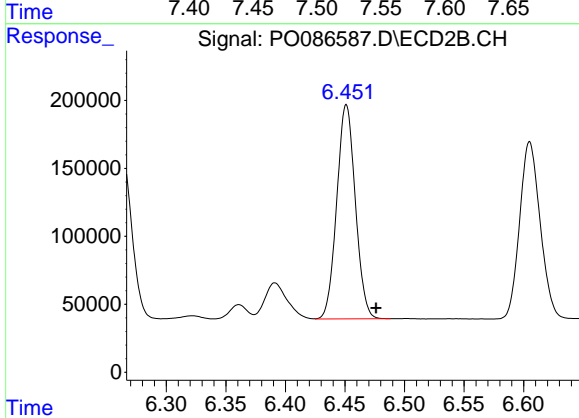
R.T.: 6.263 min
 Delta R.T.: -0.026 min
 Response: 1366644
 Conc: 702.17 ng/ml



#32 AR-1260-2

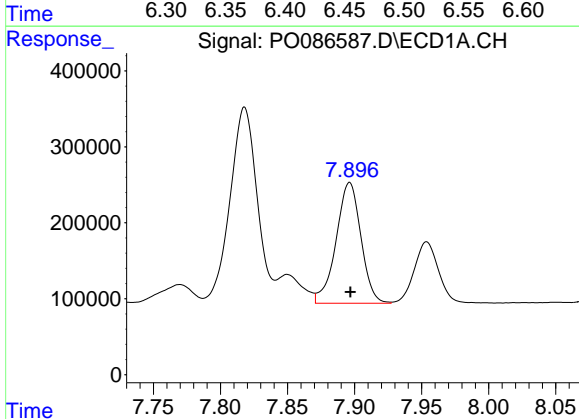
R.T.: 7.533 min
 Delta R.T.: -0.001 min
 Response: 2882635
 Conc: 796.86 ng/ml

Instrument :
 ECD_O
 ClientSampleId :
 P024-SS001-2430-01MS



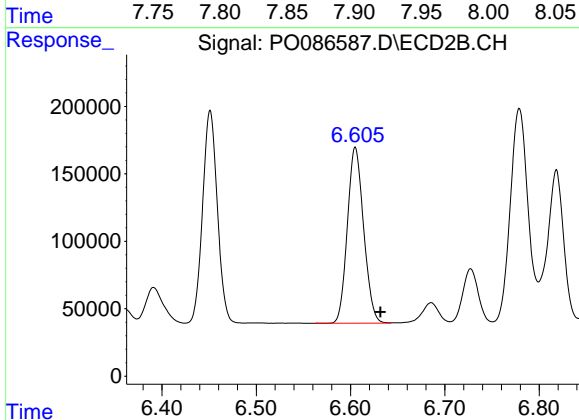
#32 AR-1260-2

R.T.: 6.451 min
 Delta R.T.: -0.025 min
 Response: 1710988
 Conc: 727.98 ng/ml



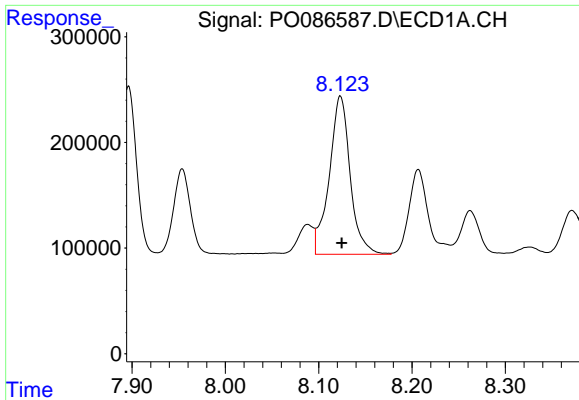
#33 AR-1260-3

R.T.: 7.896 min
 Delta R.T.: 0.000 min
 Response: 2049843
 Conc: 742.70 ng/ml



#33 AR-1260-3

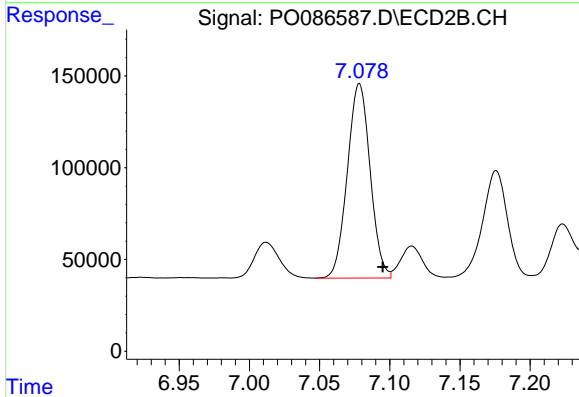
R.T.: 6.605 min
 Delta R.T.: -0.027 min
 Response: 1563609
 Conc: 727.17 ng/ml



#34 AR-1260-4

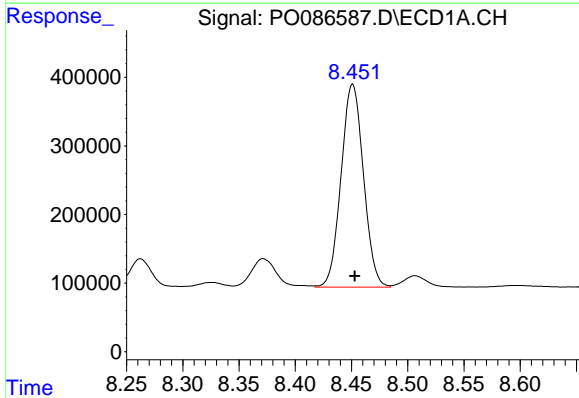
R.T.: 8.123 min
 Delta R.T.: -0.001 min
 Response: 2330998
 Conc: 690.87 ng/ml

Instrument :
 ECD_O
 ClientSampleId :
 P024-SS001-2430-01MS



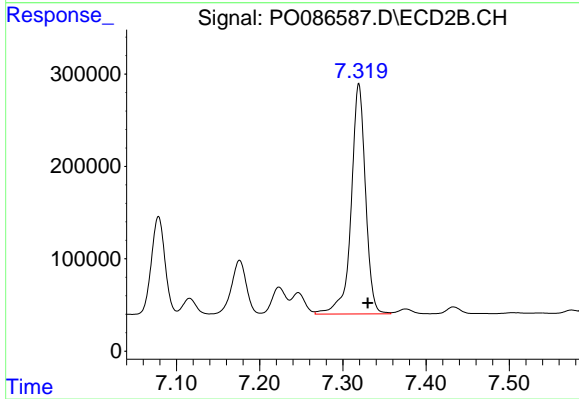
#34 AR-1260-4

R.T.: 7.078 min
 Delta R.T.: -0.017 min
 Response: 1197746
 Conc: 665.18 ng/ml



#35 AR-1260-5

R.T.: 8.451 min
 Delta R.T.: -0.002 min
 Response: 4093700
 Conc: 663.41 ng/ml



#35 AR-1260-5

R.T.: 7.319 min
 Delta R.T.: -0.011 min
 Response: 2985772
 Conc: 689.27 ng/ml