

Data Path : Z:\pestpcbsrv\HPCHEM1\ECD\_0\Data\P0052622\  
 Data File : P0086615.D  
 Signal(s) : Signal #1: ECD1A.CH Signal #2: ECD2B.CH  
 Acq On : 26 May 2022 12:09  
 Operator : YP\AJ  
 Sample : N2893-09  
 Misc :  
 ALS Vial : 17 Sample Multiplier: 1

**Instrument :**  
 ECD\_0  
**ClientSampleId :**  
 P004-SS003-1824-01

Integration File signal 1: autoint1.e  
 Integration File signal 2: autoint2.e  
 Quant Time: May 27 01:24:31 2022  
 Quant Method : Z:\pestpcbsrv\HPCHEM1\ECD\_0\methods\P0051122.M  
 Quant Title : GC EXTRACTABLES  
 QLast Update : Thu May 19 09:06:34 2022  
 Response via : Initial Calibration  
 Integrator: ChemStation 6890 Scale Mode: Small noise peaks clipped

Volume Inj. : 2 µl  
 Signal #1 Phase : ZB-MR1 Signal #2 Phase: ZB-MR2  
 Signal #1 Info : 30Mx0.32mmx 0.50µ Signal #2 Info : 30M x 0.32mm x 0.25µm

Compound	RT#1	RT#2	Resp#1	Resp#2	ng/ml	ng/ml
-----						
System Monitoring Compounds						
1) SA Tetrachlo...	4.476	3.672	2435883	976874	23.974	22.427
2) SA Decachlor...	10.325	8.719	1097196	645528	20.207	18.549
Target Compounds						
31) L7 AR-1260-1	7.276	6.263	3595946	1927878	1188.186	990.525
32) L7 AR-1260-2	7.534	6.451	6386631	4028227	1765.486	1713.905
33) L7 AR-1260-3	7.896	6.606	5686561	2756243	2060.349	1281.813 #
34) L7 AR-1260-4	8.124	7.078	6026672	3221131	1786.218	1788.887
35) L7 AR-1260-5	8.452	7.320	11933835	8460993	1933.945	1953.220
-----						

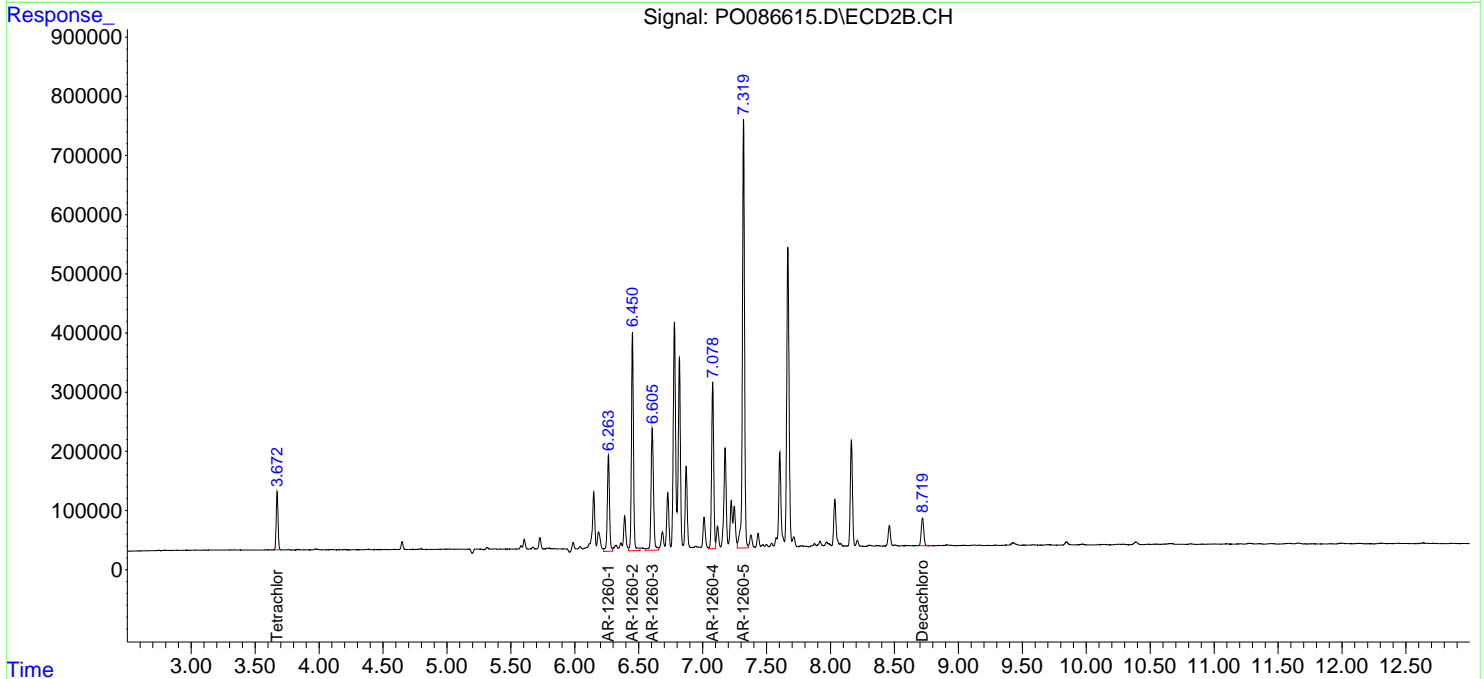
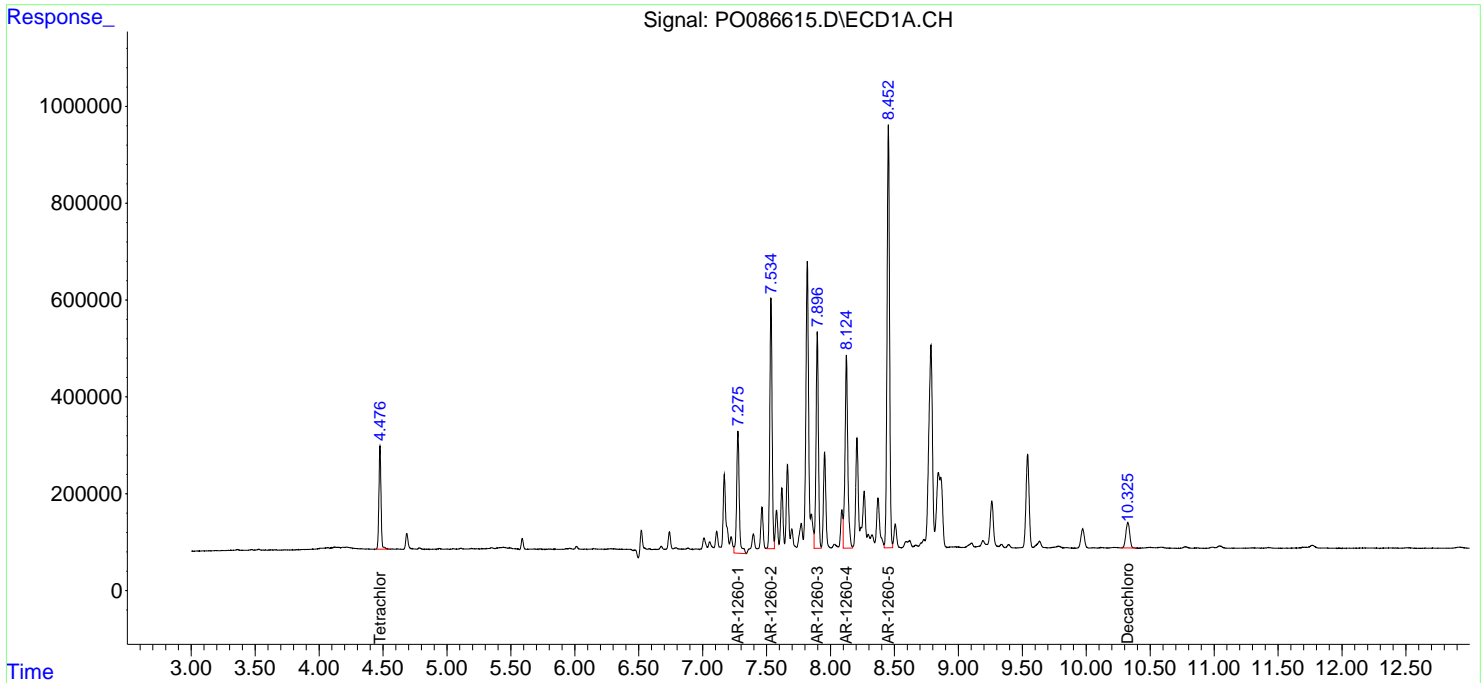
(f)=RT Delta > 1/2 Window (#)=Amounts differ by > 25% (m)=manual int.

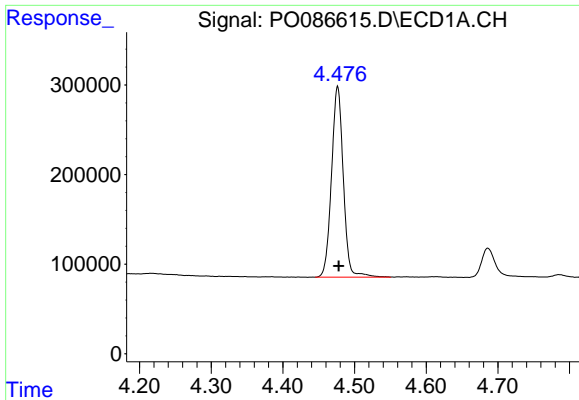
Data Path : Z:\pestpcbsrv\HPCHEM1\ECD\_O\Data\P0052622\  
 Data File : P0086615.D  
 Signal(s) : Signal #1: ECD1A.CH Signal #2: ECD2B.CH  
 Acq On : 26 May 2022 12:09  
 Operator : YP\AJ  
 Sample : N2893-09  
 Misc :  
 ALS Vial : 17 Sample Multiplier: 1

Instrument :  
 ECD\_O  
 ClientSampleId :  
 P004-SS003-1824-01

Integration File signal 1: autoint1.e  
 Integration File signal 2: autoint2.e  
 Quant Time: May 27 01:24:31 2022  
 Quant Method : Z:\pestpcbsrv\HPCHEM1\ECD\_O\methods\P0051122.M  
 Quant Title : GC EXTRACTABLES  
 QLast Update : Thu May 19 09:06:34 2022  
 Response via : Initial Calibration  
 Integrator: ChemStation 6890 Scale Mode: Small noise peaks clipped

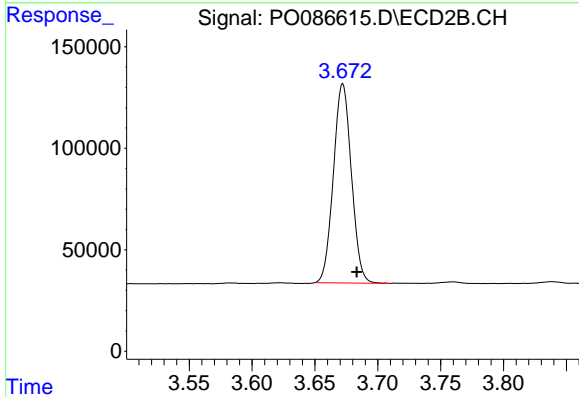
Volume Inj. : 2 µl  
 Signal #1 Phase : ZB-MR1 Signal #2 Phase: ZB-MR2  
 Signal #1 Info : 30Mx0.32mmx 0.50µ Signal #2 Info : 30M x 0.32mm x 0.25µm



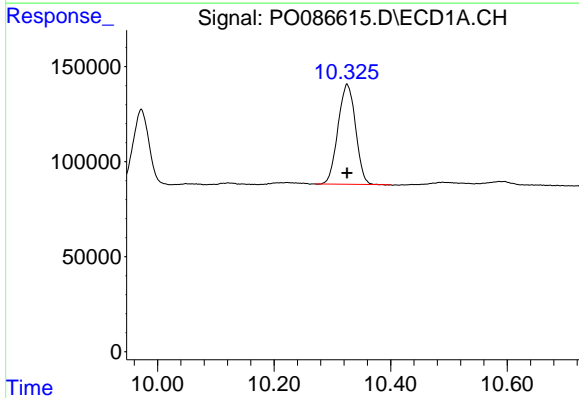


#1 Tetrachloro-m-xylene  
 R.T.: 4.476 min  
 Delta R.T.: -0.002 min  
 Response: 2435883  
 Conc: 23.97 ng/ml

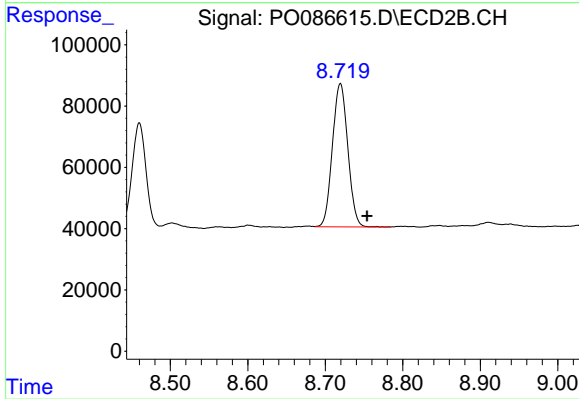
Instrument :  
 ECD\_O  
 ClientSampleId :  
 P004-SS003-1824-01



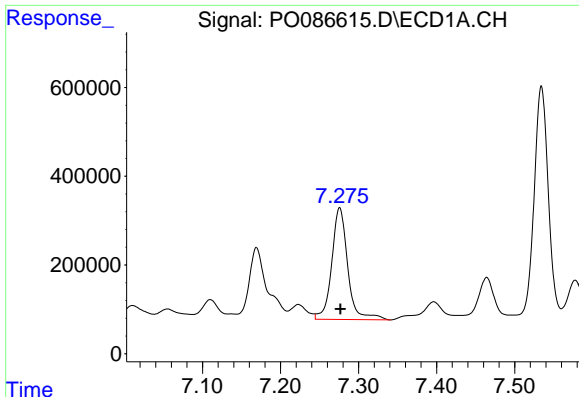
#1 Tetrachloro-m-xylene  
 R.T.: 3.672 min  
 Delta R.T.: -0.011 min  
 Response: 976874  
 Conc: 22.43 ng/ml



#2 Decachlorobiphenyl  
 R.T.: 10.325 min  
 Delta R.T.: 0.000 min  
 Response: 1097196  
 Conc: 20.21 ng/ml



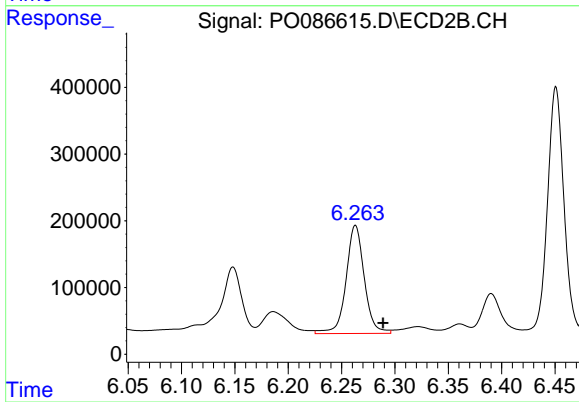
#2 Decachlorobiphenyl  
 R.T.: 8.719 min  
 Delta R.T.: -0.034 min  
 Response: 645528  
 Conc: 18.55 ng/ml



#31 AR-1260-1

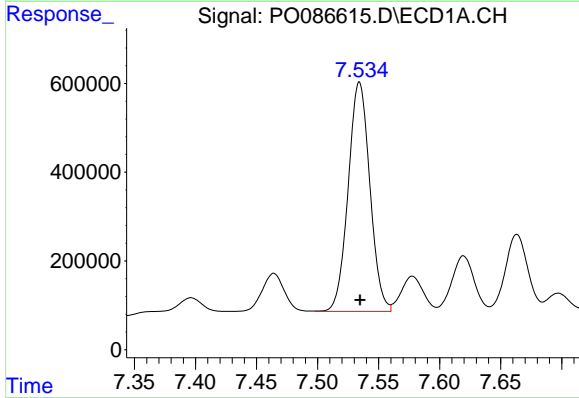
R.T.: 7.276 min  
 Delta R.T.: -0.001 min  
 Response: 3595946  
 Conc: 1188.19 ng/ml

Instrument :  
 ECD\_O  
 ClientSampleId :  
 P004-SS003-1824-01



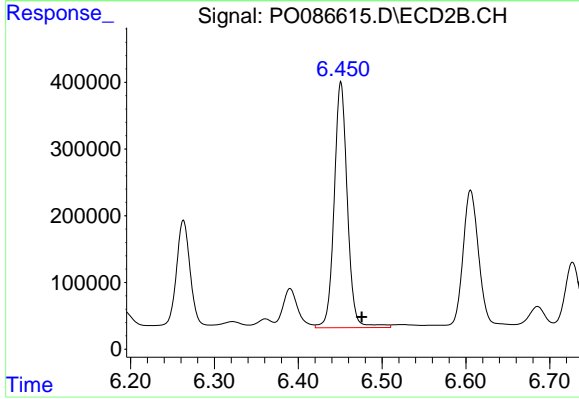
#31 AR-1260-1

R.T.: 6.263 min  
 Delta R.T.: -0.026 min  
 Response: 1927878  
 Conc: 990.53 ng/ml



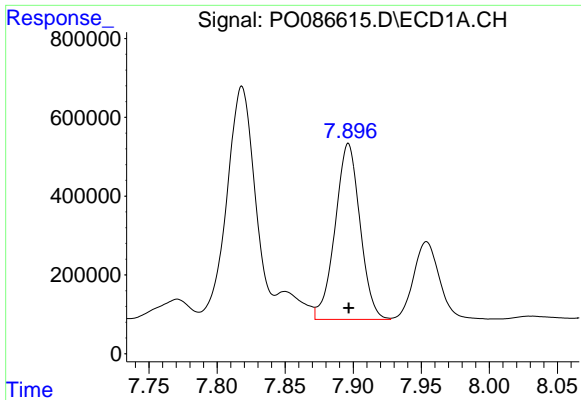
#32 AR-1260-2

R.T.: 7.534 min  
 Delta R.T.: 0.000 min  
 Response: 6386631  
 Conc: 1765.49 ng/ml



#32 AR-1260-2

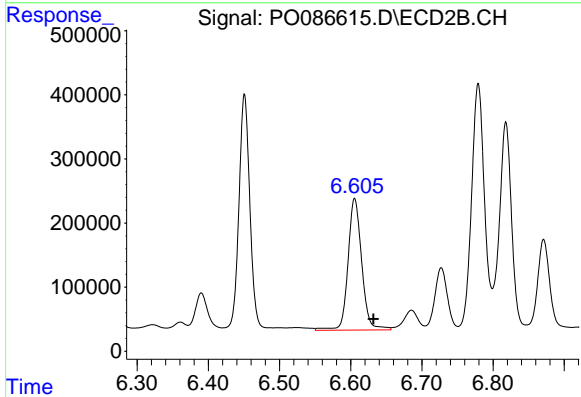
R.T.: 6.451 min  
 Delta R.T.: -0.025 min  
 Response: 4028227  
 Conc: 1713.90 ng/ml



#33 AR-1260-3

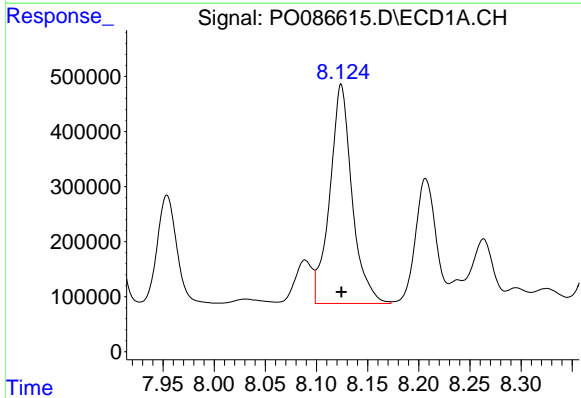
R.T.: 7.896 min  
 Delta R.T.: 0.000 min  
 Response: 5686561  
 Conc: 2060.35 ng/ml

Instrument :  
 ECD\_O  
 ClientSampleId :  
 P004-SS003-1824-01



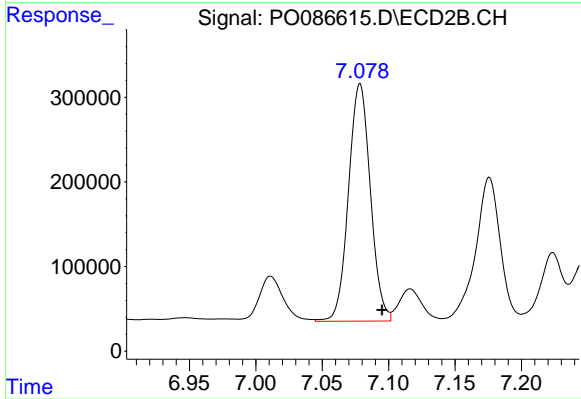
#33 AR-1260-3

R.T.: 6.606 min  
 Delta R.T.: -0.026 min  
 Response: 2756243  
 Conc: 1281.81 ng/ml



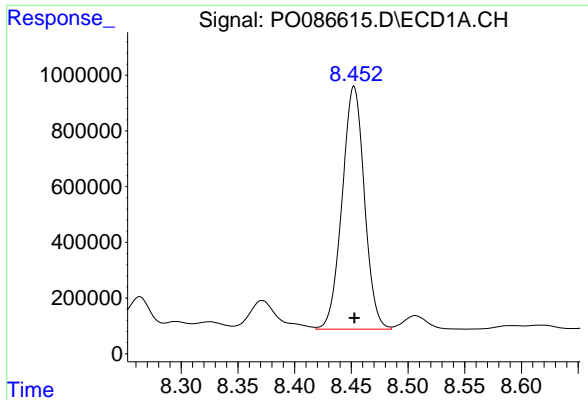
#34 AR-1260-4

R.T.: 8.124 min  
 Delta R.T.: 0.000 min  
 Response: 6026672  
 Conc: 1786.22 ng/ml



#34 AR-1260-4

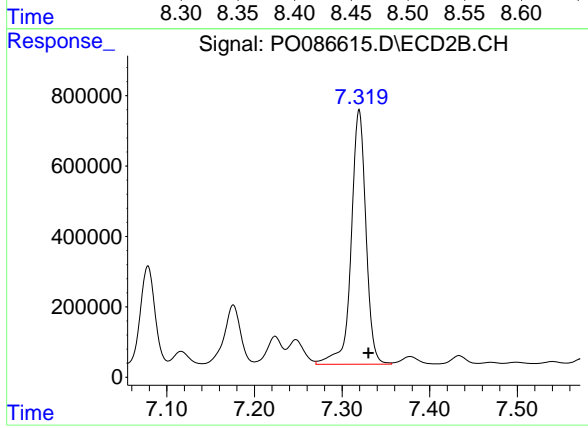
R.T.: 7.078 min  
 Delta R.T.: -0.017 min  
 Response: 3221131  
 Conc: 1788.89 ng/ml



#35 AR-1260-5

R.T.: 8.452 min  
Delta R.T.: 0.000 min  
Response: 11933835  
Conc: 1933.94 ng/ml

Instrument :  
ECD\_O  
ClientSampleId :  
P004-SS003-1824-01



#35 AR-1260-5

R.T.: 7.320 min  
Delta R.T.: -0.010 min  
Response: 8460993  
Conc: 1953.22 ng/ml