

Data Path : Z:\pestpcbsrv\HPCHEM1\ECD\_0\Data\P0052622\  
 Data File : P0086624.D  
 Signal(s) : Signal #1: ECD1A.CH Signal #2: ECD2B.CH  
 Acq On : 26 May 2022 14:35  
 Operator : YP\AJ  
 Sample : N2893-18  
 Misc :  
 ALS Vial : 26 Sample Multiplier: 1

Instrument :  
 ECD\_0  
 ClientSampleId :  
 P004-SS004-2430-01

Integration File signal 1: autoint1.e  
 Integration File signal 2: autoint2.e  
 Quant Time: May 27 01:31:53 2022  
 Quant Method : Z:\pestpcbsrv\HPCHEM1\ECD\_0\methods\P0051122.M  
 Quant Title : GC EXTRACTABLES  
 QLast Update : Thu May 19 09:06:34 2022  
 Response via : Initial Calibration  
 Integrator: ChemStation 6890 Scale Mode: Small noise peaks clipped

Volume Inj. : 2 µl  
 Signal #1 Phase : ZB-MR1 Signal #2 Phase: ZB-MR2  
 Signal #1 Info : 30Mx0.32mmx 0.50µ Signal #2 Info : 30M x 0.32mm x 0.25µm

Compound	RT#1	RT#2	Resp#1	Resp#2	ng/ml	ng/ml
-----						
System Monitoring Compounds						
1) SA Tetrachlo...	4.476	3.672	2485266	1007011	24.460	23.119
2) SA Decachlor...	10.326	8.721	1475492	815685	27.173	23.439
Target Compounds						
31) L7 AR-1260-1	7.279	6.264	12089521	7201039	3994.667	3699.824
32) L7 AR-1260-2	7.536	6.452	21449619	13274661	5929.417	5648.019
33) L7 AR-1260-3	7.899	6.607	17641817	9088566	6391.964	4226.708 #
34) L7 AR-1260-4	8.126	7.079	19546565	10529054	5793.318	5847.415
35) L7 AR-1260-5	8.453	7.320	37861655	26699311	6135.693	6163.534
-----						

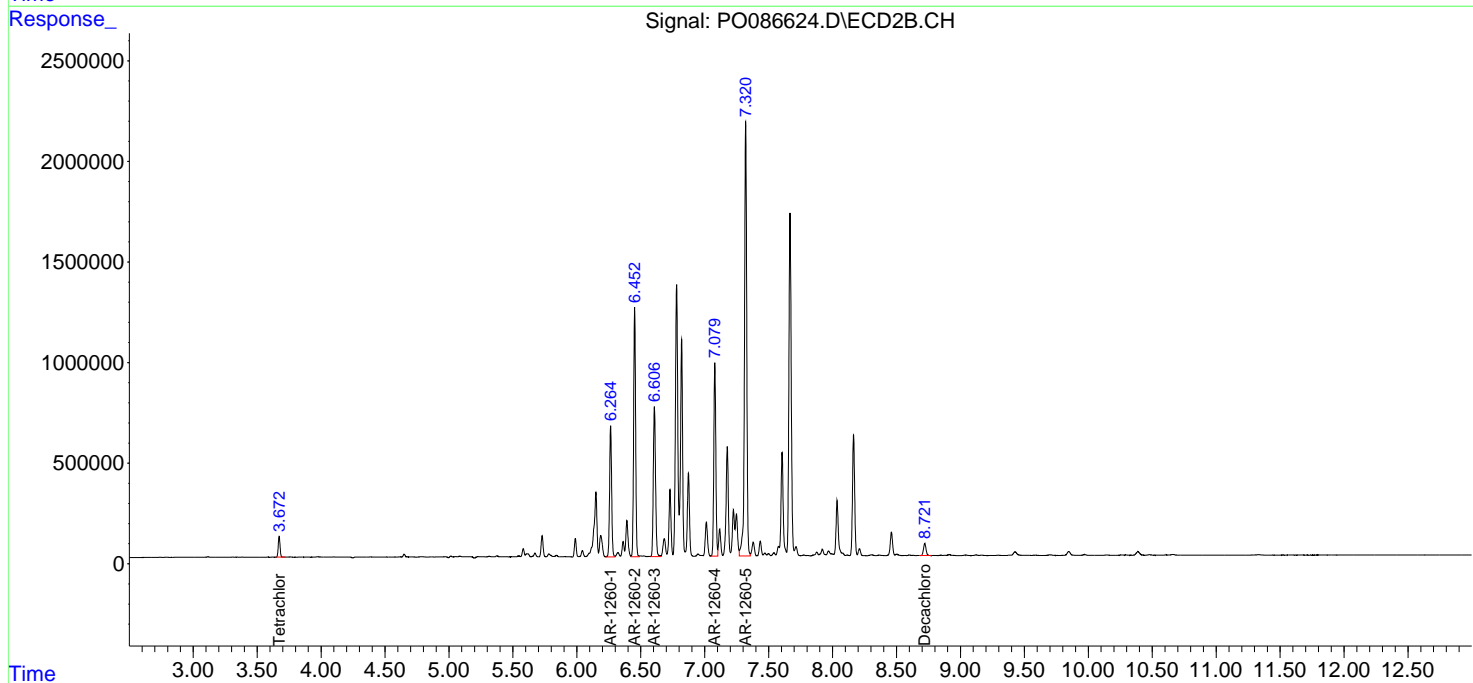
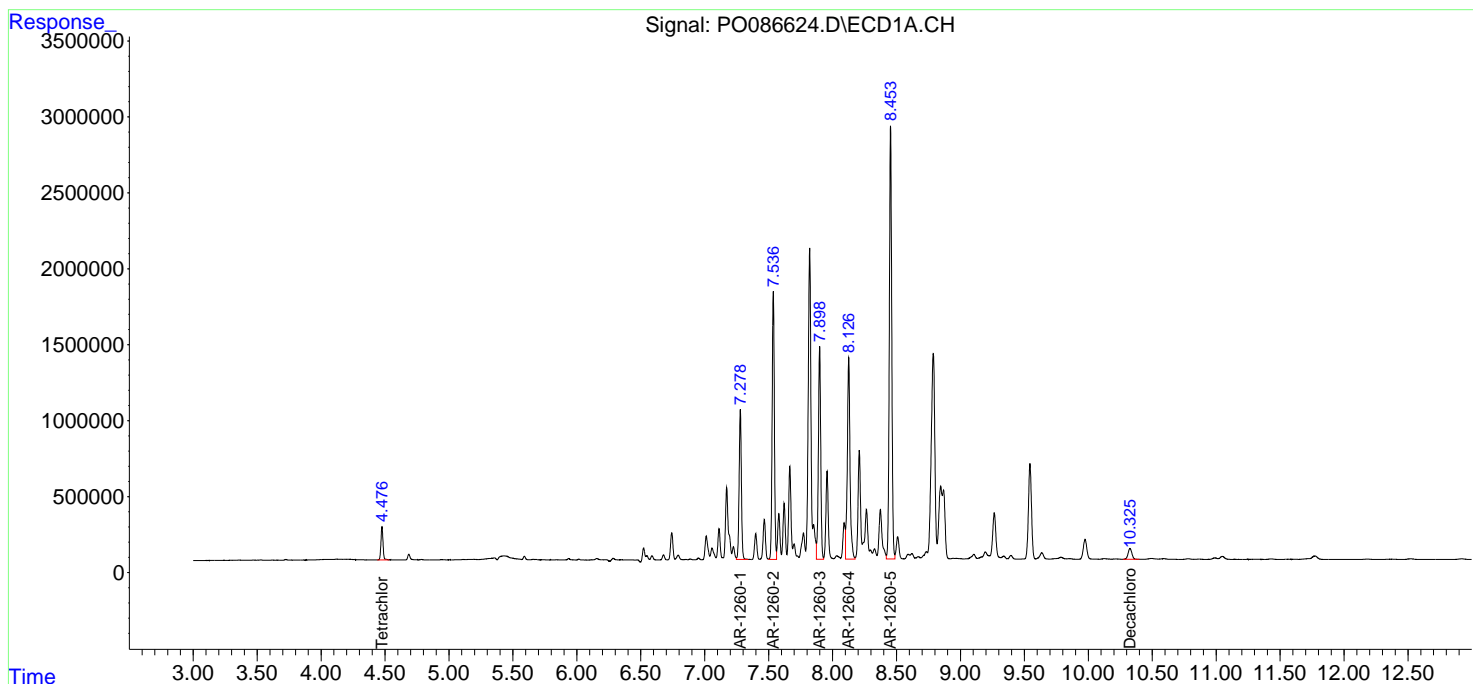
(f)=RT Delta > 1/2 Window (#)=Amounts differ by > 25% (m)=manual int.

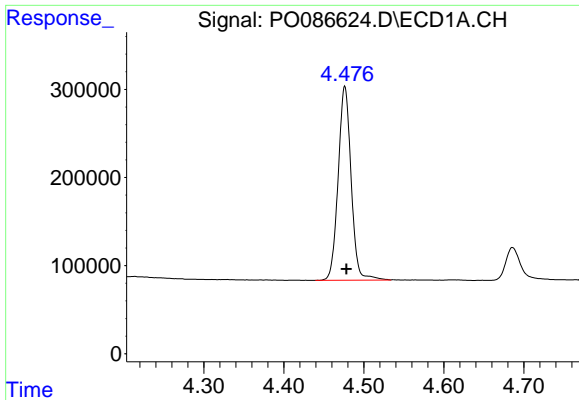
Data Path : Z:\pestpcbsrv\HPCHEM1\ECD\_O\Data\P0052622\  
 Data File : P0086624.D  
 Signal(s) : Signal #1: ECD1A.CH Signal #2: ECD2B.CH  
 Acq On : 26 May 2022 14:35  
 Operator : YP\AJ  
 Sample : N2893-18  
 Misc :  
 ALS Vial : 26 Sample Multiplier: 1

Instrument :  
 ECD\_O  
 ClientSampleId :  
 P004-SS004-2430-01

Integration File signal 1: autoint1.e  
 Integration File signal 2: autoint2.e  
 Quant Time: May 27 01:31:53 2022  
 Quant Method : Z:\pestpcbsrv\HPCHEM1\ECD\_O\methods\P0051122.M  
 Quant Title : GC EXTRACTABLES  
 QLast Update : Thu May 19 09:06:34 2022  
 Response via : Initial Calibration  
 Integrator: ChemStation 6890 Scale Mode: Small noise peaks clipped

Volume Inj. : 2 µl  
 Signal #1 Phase : ZB-MR1 Signal #2 Phase: ZB-MR2  
 Signal #1 Info : 30Mx0.32mmx 0.50µ Signal #2 Info : 30M x 0.32mm x 0.25µm

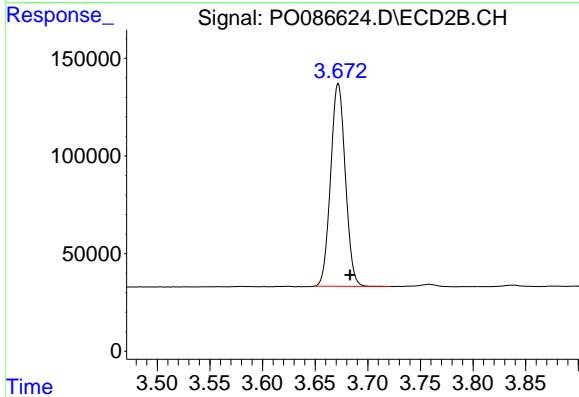




#1 Tetrachloro-m-xylene

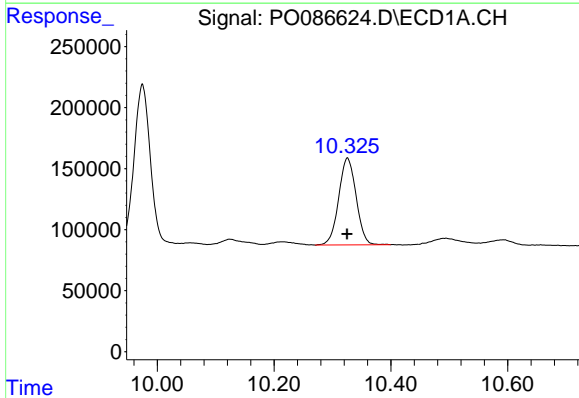
R.T.: 4.476 min  
 Delta R.T.: -0.002 min  
 Response: 2485266  
 Conc: 24.46 ng/ml

Instrument :  
 ECD\_O  
 ClientSampleId :  
 P004-SS004-2430-01



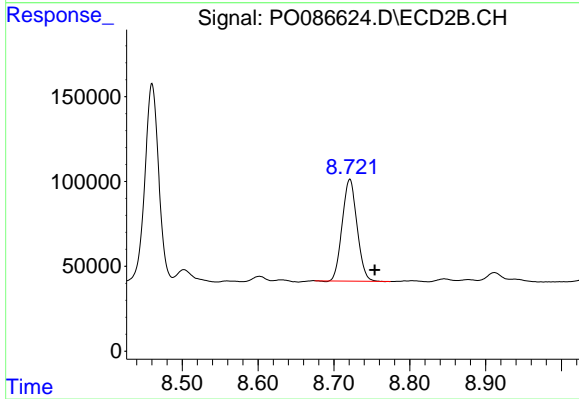
#1 Tetrachloro-m-xylene

R.T.: 3.672 min  
 Delta R.T.: -0.011 min  
 Response: 1007011  
 Conc: 23.12 ng/ml



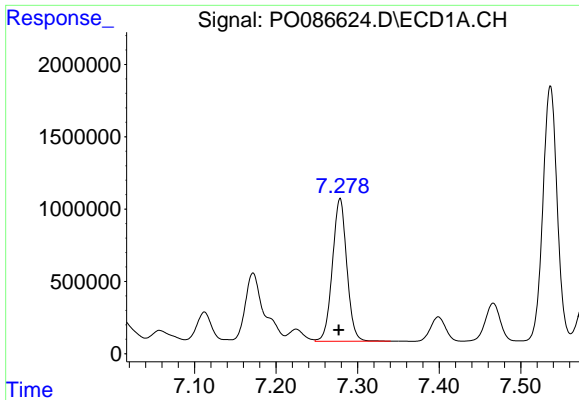
#2 Decachlorobiphenyl

R.T.: 10.326 min  
 Delta R.T.: 0.000 min  
 Response: 1475492  
 Conc: 27.17 ng/ml



#2 Decachlorobiphenyl

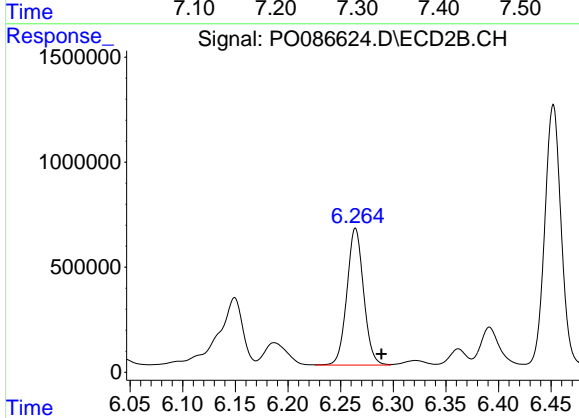
R.T.: 8.721 min  
 Delta R.T.: -0.033 min  
 Response: 815685  
 Conc: 23.44 ng/ml



#31 AR-1260-1

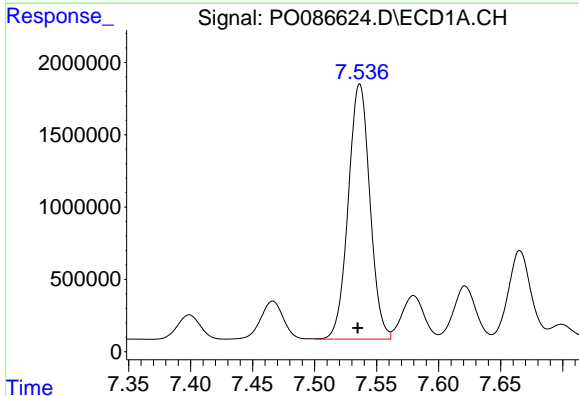
R.T.: 7.279 min  
 Delta R.T.: 0.002 min  
 Response: 12089521  
 Conc: 3994.67 ng/ml

Instrument :  
 ECD\_O  
 ClientSampleId :  
 P004-SS004-2430-01



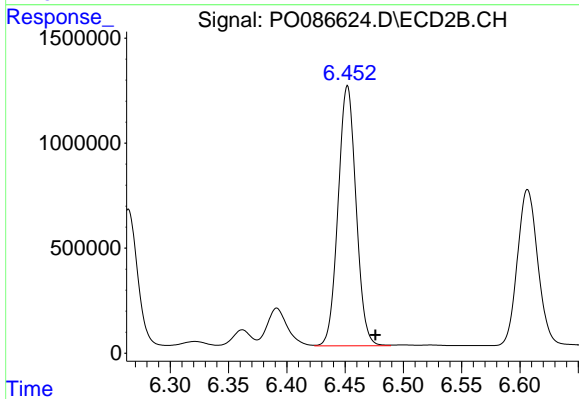
#31 AR-1260-1

R.T.: 6.264 min  
 Delta R.T.: -0.025 min  
 Response: 7201039  
 Conc: 3699.82 ng/ml



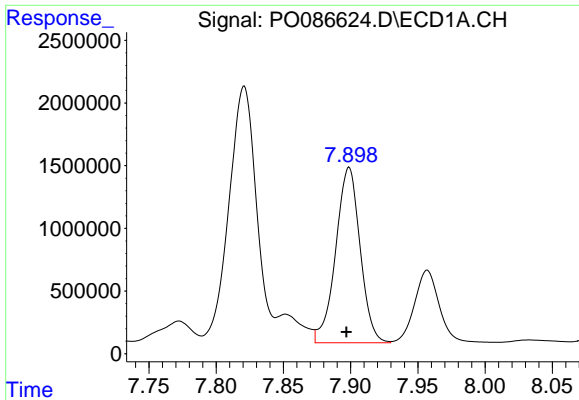
#32 AR-1260-2

R.T.: 7.536 min  
 Delta R.T.: 0.002 min  
 Response: 21449619  
 Conc: 5929.42 ng/ml



#32 AR-1260-2

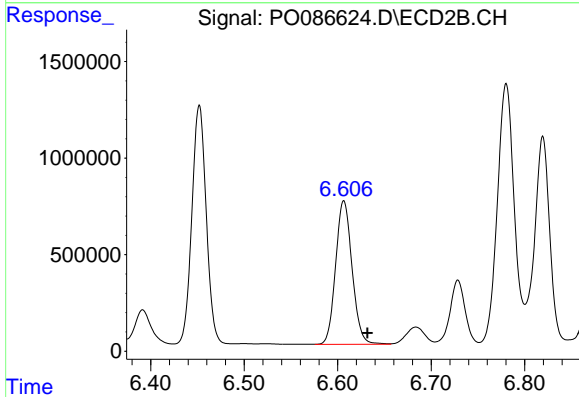
R.T.: 6.452 min  
 Delta R.T.: -0.024 min  
 Response: 13274661  
 Conc: 5648.02 ng/ml



#33 AR-1260-3

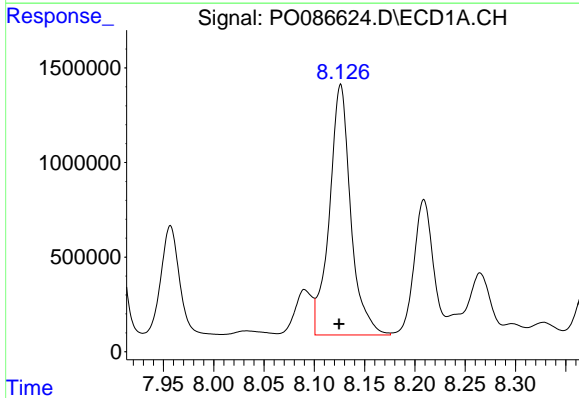
R.T.: 7.899 min  
 Delta R.T.: 0.002 min  
 Response: 17641817  
 Conc: 6391.96 ng/ml

Instrument :  
 ECD\_O  
 ClientSampleId :  
 P004-SS004-2430-01



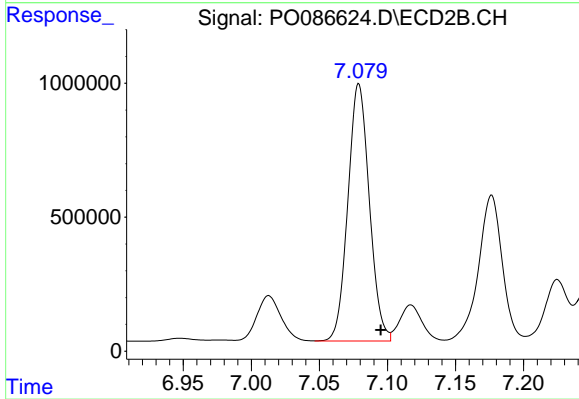
#33 AR-1260-3

R.T.: 6.607 min  
 Delta R.T.: -0.025 min  
 Response: 9088566  
 Conc: 4226.71 ng/ml



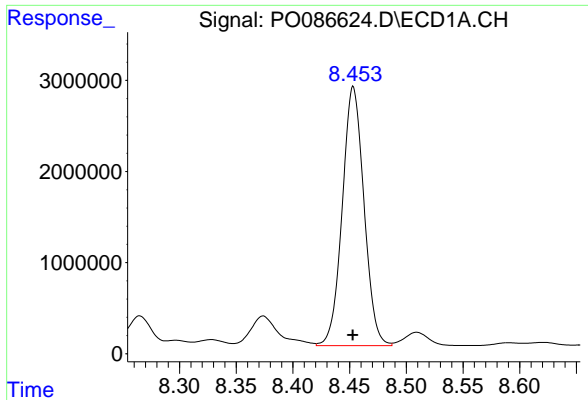
#34 AR-1260-4

R.T.: 8.126 min  
 Delta R.T.: 0.002 min  
 Response: 19546565  
 Conc: 5793.32 ng/ml



#34 AR-1260-4

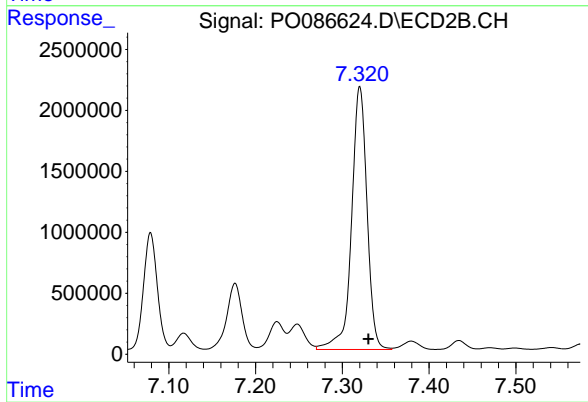
R.T.: 7.079 min  
 Delta R.T.: -0.016 min  
 Response: 10529054  
 Conc: 5847.42 ng/ml



#35 AR-1260-5

R.T.: 8.453 min  
Delta R.T.: 0.000 min  
Response: 37861655  
Conc: 6135.69 ng/ml

Instrument :  
ECD\_O  
ClientSampleId :  
P004-SS004-2430-01



#35 AR-1260-5

R.T.: 7.320 min  
Delta R.T.: -0.010 min  
Response: 26699311  
Conc: 6163.53 ng/ml