

Data Path : Z:\pestpcbsrv\HPCHEM1\ECD\_0\Data\P0052721\  
 Data File : P0078241.D  
 Signal(s) : Signal #1: ECD1A.CH Signal #2: ECD2B.CH  
 Acq On : 28 May 2021 00:14  
 Operator : DD\AJ  
 Sample : AR1254CCC500  
 Misc :  
 ALS Vial : 6 Sample Multiplier: 1

Instrument :  
 ECD\_O  
 ClientSampled :

Integration File signal 1: autoint1.e  
 Integration File signal 2: autoint2.e  
 Quant Time: May 28 04:38:19 2021  
 Quant Method : Z:\pestpcbsrv\HPCHEM1\ECD\_0\methods\P0051821.M  
 Quant Title : GC EXTRACTABLES  
 QLast Update : Wed May 19 06:28:32 2021  
 Response via : Initial Calibration  
 Integrator: ChemStation 6890 Scale Mode: Small noise peaks clipped

Volume Inj. : 2 µl  
 Signal #1 Phase : ZB-MR1 Signal #2 Phase: ZB-MR2  
 Signal #1 Info : 30Mx0.32mmx 0.50µ Signal #2 Info : 30M x 0.32mm x 0.25µm

Compound	RT#1	RT#2	Resp#1	Resp#2	ng/ml	ng/ml
System Monitoring Compounds						
1) SA Tetrachlo...	4.341	3.619	3524896	1531621	47.693	50.689
2) SA Decachlor...	9.952	8.808	2334814	1314975	47.225	45.223
Target Compounds						
3) L1 AR-1016-1	5.637	4.846	25551	12265	10.489	11.234
4) L1 AR-1016-2	5.663	4.866	39889	8998	11.188	5.788 #
6) L1 AR-1016-4	0.000	5.107	0	349403	N.D.	491.202 #
7) L1 AR-1016-5	6.138	5.330	385299	211388	222.722	239.784
9) L2 AR-1221-2	4.682	3.961	39882	21394	64.896	77.663
12) L3 AR-1232-2	0.000	4.866	0	8998	N.D.	13.526 #
13) L3 AR-1232-3	5.663	0.000	39889	0	27.472	N.D. #
14) L3 AR-1232-4	0.000	5.149	0	104784	N.D.	330.771 #
15) L3 AR-1232-5	5.927	5.330	688374	211388	1401.997	607.541 #
16) L4 AR-1242-1	5.637	4.846	25551	12265	13.908	14.280
17) L4 AR-1242-2	5.663	4.866	39889	8998	14.766	7.437 #
19) L4 AR-1242-4	0.000	5.149	0	104784	N.D.	154.994 #
20) L4 AR-1242-5	6.600	5.704	357427	927489	267.109	1131.075 #
21) L5 AR-1248-1	5.637	4.846	25551	12265	17.931	19.032
22) L5 AR-1248-2	5.927	5.107	688374	349403	362.588	365.506
23) L5 AR-1248-3	6.138	5.149	385299	104784	173.711	109.010 #
24) L5 AR-1248-4	6.561	5.330	590884	211388	253.855	184.576 #
25) L5 AR-1248-5	6.600	5.746	357427	149854	157.974	143.011
26) L6 AR-1254-1	6.531	5.704	1055446	927489	425.241	537.800 #
27) L6 AR-1254-2	6.758	5.862	1892000	862022	487.561	537.765
28) L6 AR-1254-3	7.132	6.275	2077598	1227865	529.548	514.451
29) L6 AR-1254-4	7.426	6.513	1562669	760159	575.421	523.576
30) L6 AR-1254-5	7.849	6.935	1603768	1115179	548.394	490.634
31) L7 AR-1260-1	7.298	6.411	978060	658487	348.528	410.973
32) L7 AR-1260-2	7.563	6.606	1042099	535917	309.772	277.594
33) L7 AR-1260-3	7.907f	6.755	229311	516376	93.980	281.460 #
34) L7 AR-1260-4	8.139	7.234	596281	57522	222.598	38.158 #
35) L7 AR-1260-5	8.461	7.481	197931	135584	38.539	38.880
36) L8 AR-1262-1	7.907f	6.935	229311	1115179	64.010	950.382 #
37) L8 AR-1262-2	8.461	7.481	197931	135584	32.881	34.756
38) L8 AR-1262-3	8.751	0.000	168642	0	41.756	N.D. #
39) L8 AR-1262-4	8.794f	7.823	38873	142059	12.465	47.371 #
41) L9 AR-1268-1	8.751f	0.000	168642	0	23.791	N.D. #
42) L9 AR-1268-2	8.794f	7.823	38873	142059	6.007	34.334 #

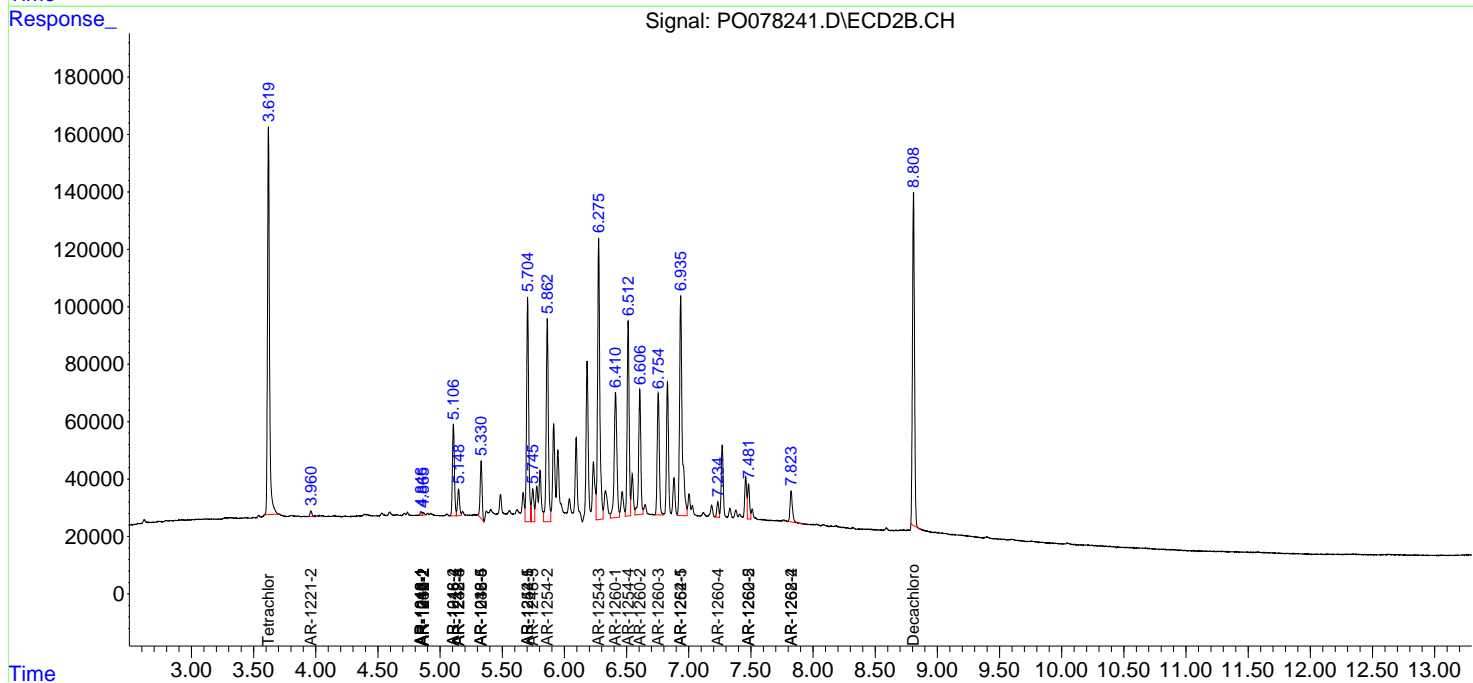
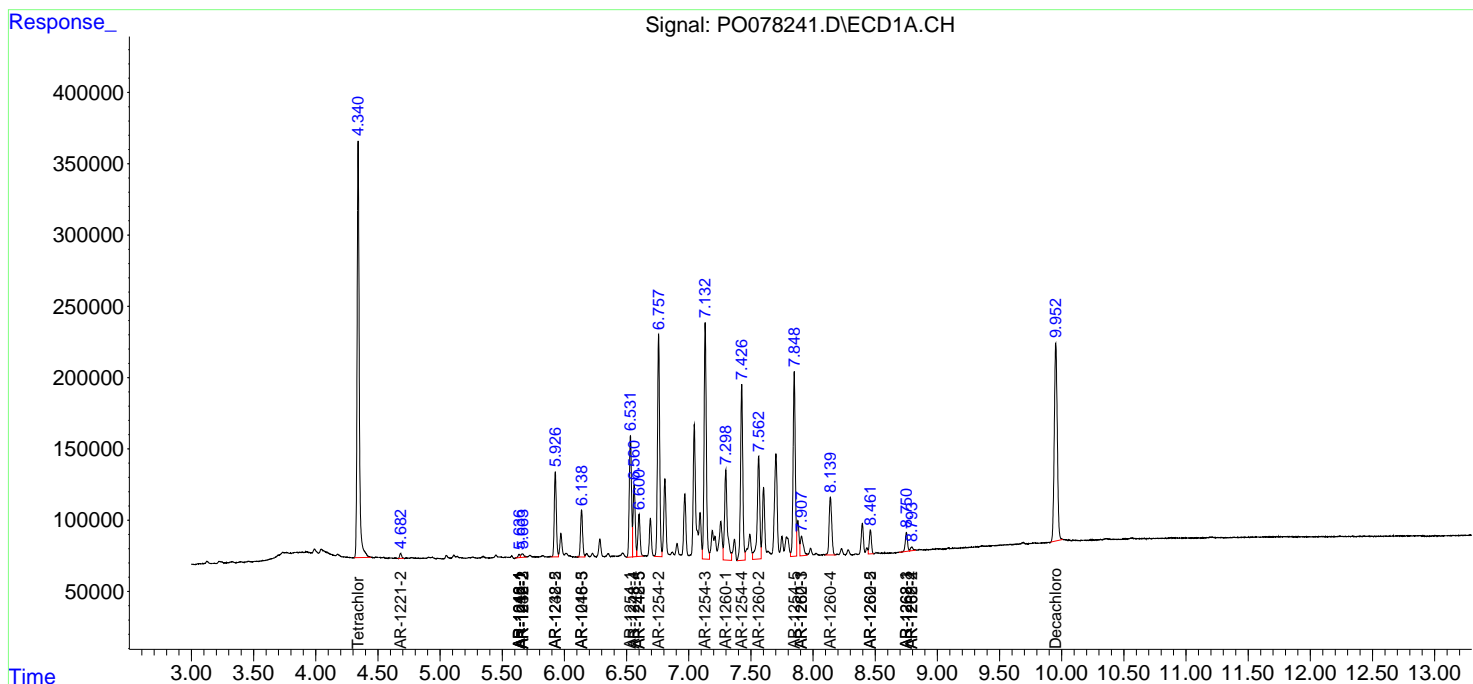
(f)=RT Delta > 1/2 Window (#)=Amounts differ by > 25% (m)=manual int.

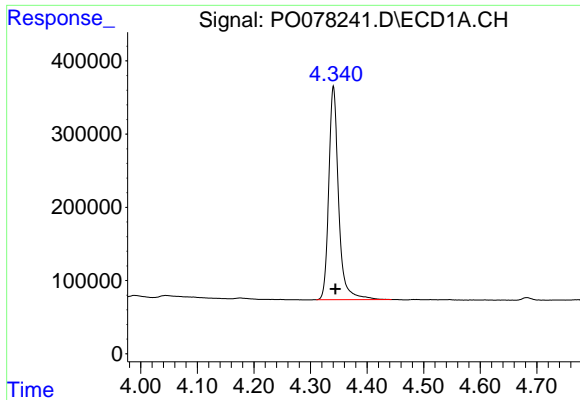
Data Path : Z:\pestpcbsrv\HPCHEM1\ECD\_0\Data\P0052721\  
 Data File : P0078241.D  
 Signal(s) : Signal #1: ECD1A.CH Signal #2: ECD2B.CH  
 Acq On : 28 May 2021 00:14  
 Operator : DD\AJ  
 Sample : AR1254CCC500  
 Misc :  
 ALS Vial : 6 Sample Multiplier: 1

Instrument :  
 ECD\_O  
 ClientSampled :

Integration File signal 1: autoint1.e  
 Integration File signal 2: autoint2.e  
 Quant Time: May 28 04:38:19 2021  
 Quant Method : Z:\pestpcbsrv\HPCHEM1\ECD\_0\methods\P0051821.M  
 Quant Title : GC EXTRACTABLES  
 QLast Update : Wed May 19 06:28:32 2021  
 Response via : Initial Calibration  
 Integrator: ChemStation 6890 Scale Mode: Small noise peaks clipped

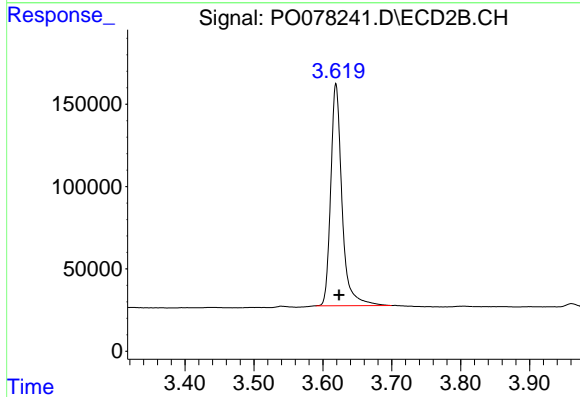
Volume Inj. : 2 µl  
 Signal #1 Phase : ZB-MR1 Signal #2 Phase: ZB-MR2  
 Signal #1 Info : 30Mx0.32mmx 0.50µ Signal #2 Info : 30M x 0.32mm x 0.25µm



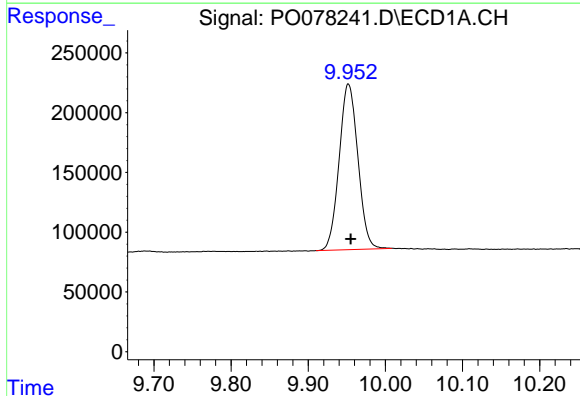


#1 Tetrachloro-m-xylene  
 R.T.: 4.341 min  
 Delta R.T.: -0.003 min  
 Response: 3524896  
 Conc: 47.69 ng/ml

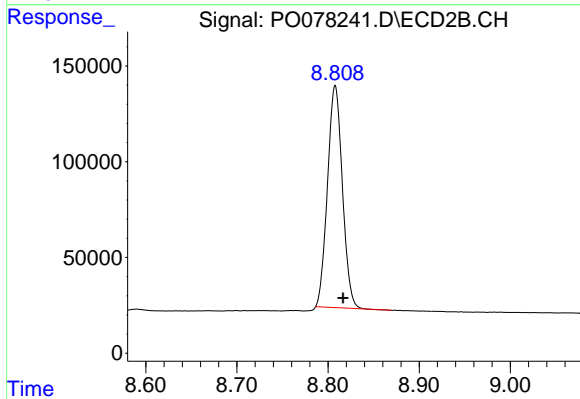
Instrument :  
 ECD\_O  
 ClientSampleId :



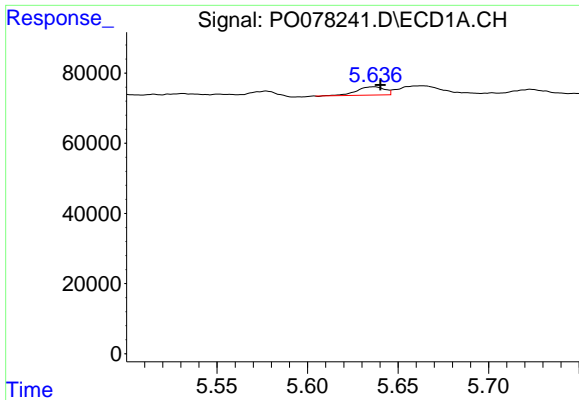
#1 Tetrachloro-m-xylene  
 R.T.: 3.619 min  
 Delta R.T.: -0.005 min  
 Response: 1531621  
 Conc: 50.69 ng/ml



#2 Decachlorobiphenyl  
 R.T.: 9.952 min  
 Delta R.T.: -0.003 min  
 Response: 2334814  
 Conc: 47.22 ng/ml



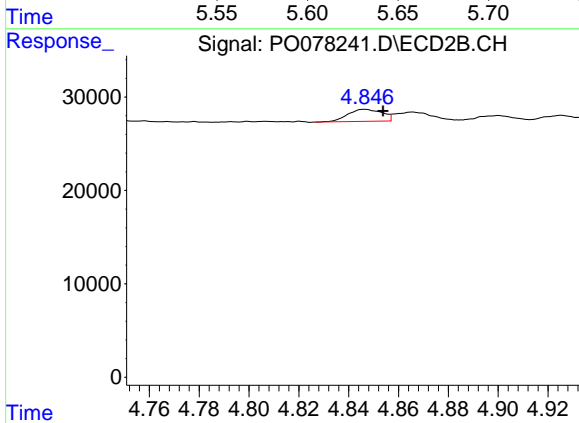
#2 Decachlorobiphenyl  
 R.T.: 8.808 min  
 Delta R.T.: -0.009 min  
 Response: 1314975  
 Conc: 45.22 ng/ml



#3 AR-1016-1

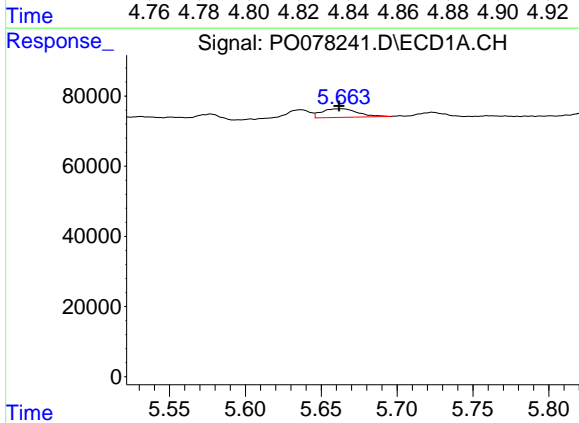
R.T.: 5.637 min  
 Delta R.T.: -0.003 min  
 Response: 25551  
 Conc: 10.49 ng/ml

Instrument :  
 ECD\_O  
 ClientSampleId :



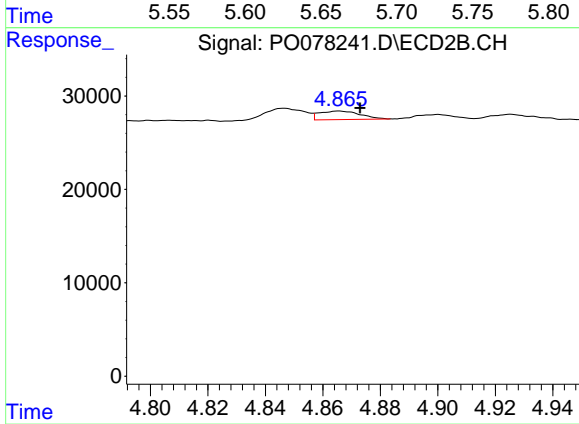
#3 AR-1016-1

R.T.: 4.846 min  
 Delta R.T.: -0.007 min  
 Response: 12265  
 Conc: 11.23 ng/ml



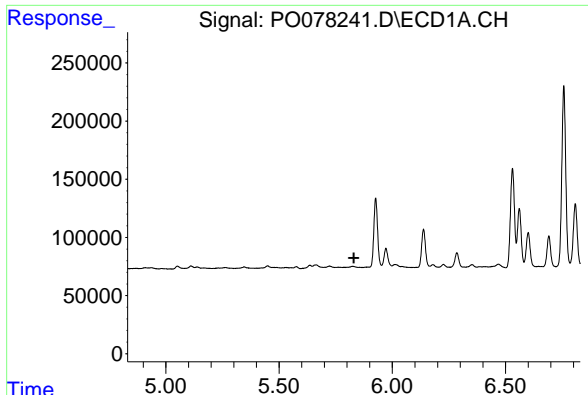
#4 AR-1016-2

R.T.: 5.663 min  
 Delta R.T.: 0.002 min  
 Response: 39889  
 Conc: 11.19 ng/ml



#4 AR-1016-2

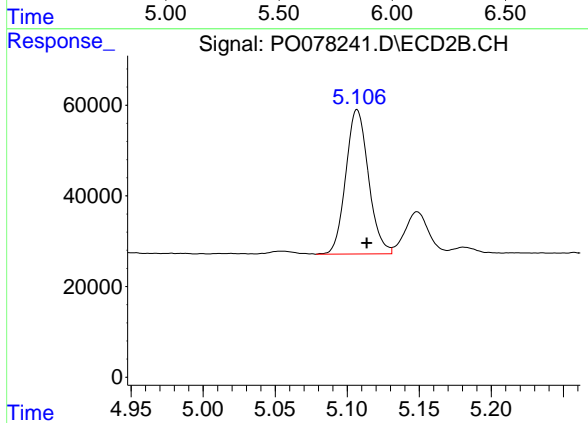
R.T.: 4.866 min  
 Delta R.T.: -0.007 min  
 Response: 8998  
 Conc: 5.79 ng/ml



#6 AR-1016-4

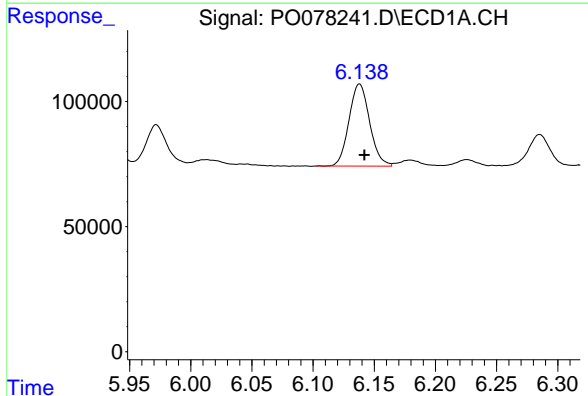
R.T.: 0.000 min  
 Exp R.T.: 5.831 min  
 Response: 0  
 Conc: N.D.

Instrument :  
 ECD\_O  
 ClientSampleId :



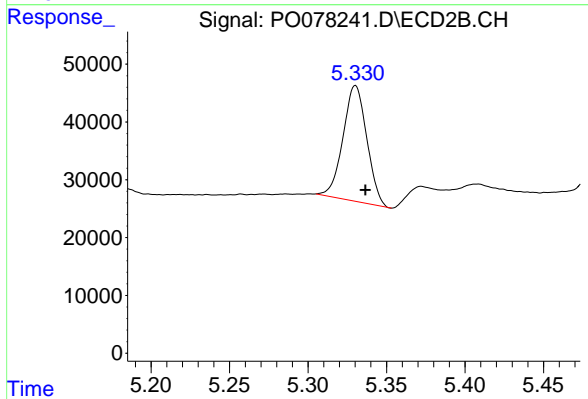
#6 AR-1016-4

R.T.: 5.107 min  
 Delta R.T.: -0.007 min  
 Response: 349403  
 Conc: 491.20 ng/ml



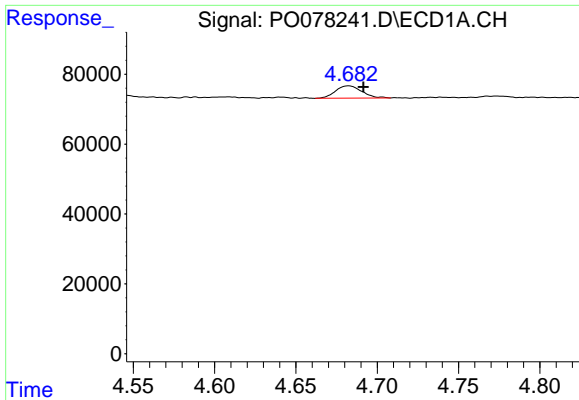
#7 AR-1016-5

R.T.: 6.138 min  
 Delta R.T.: -0.004 min  
 Response: 385299  
 Conc: 222.72 ng/ml



#7 AR-1016-5

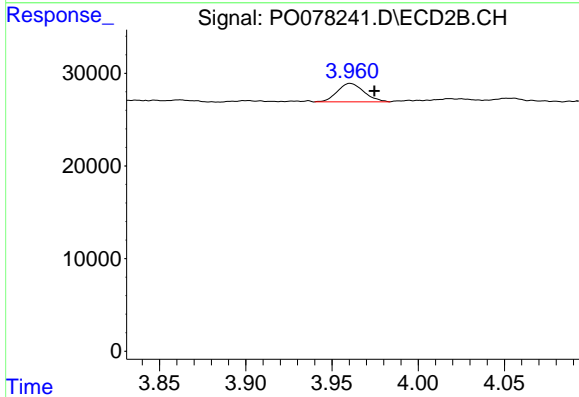
R.T.: 5.330 min  
 Delta R.T.: -0.006 min  
 Response: 211388  
 Conc: 239.78 ng/ml



#9 AR-1221-2

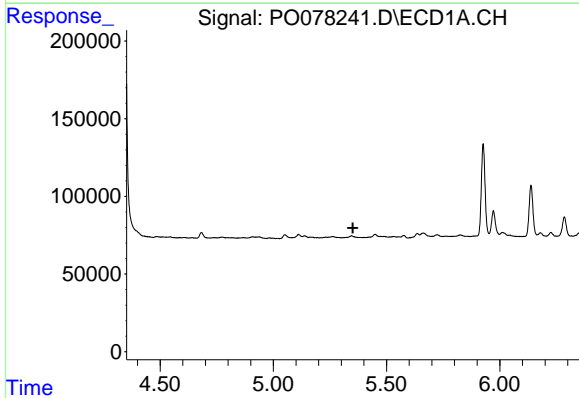
R.T.: 4.682 min  
 Delta R.T.: -0.009 min  
 Response: 39882  
 Conc: 64.90 ng/ml

Instrument :  
 ECD\_O  
 ClientSampleId :



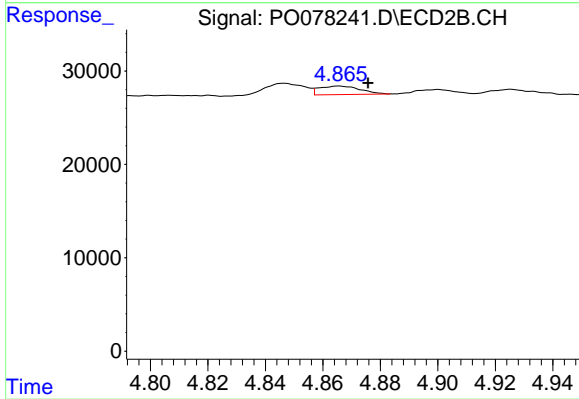
#9 AR-1221-2

R.T.: 3.961 min  
 Delta R.T.: -0.014 min  
 Response: 21394  
 Conc: 77.66 ng/ml



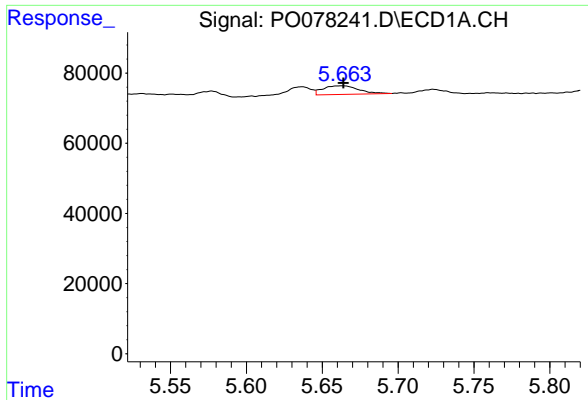
#12 AR-1232-2

R.T.: 0.000 min  
 Exp R.T. : 5.352 min  
 Response: 0  
 Conc: N.D.



#12 AR-1232-2

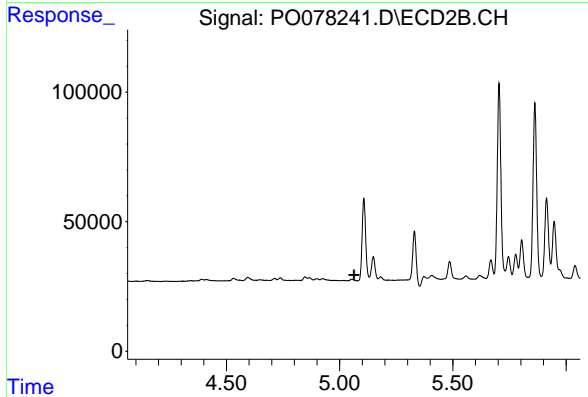
R.T.: 4.866 min  
 Delta R.T.: -0.010 min  
 Response: 8998  
 Conc: 13.53 ng/ml



#13 AR-1232-3

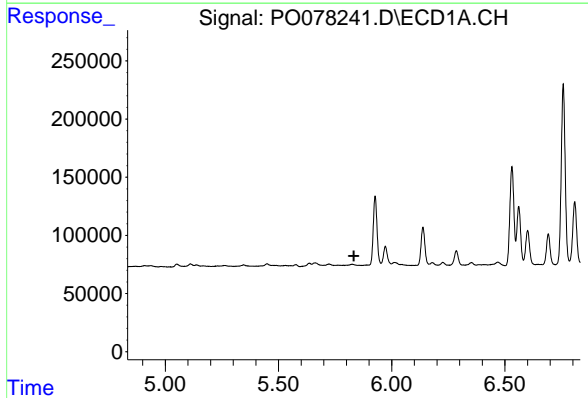
R.T.: 5.663 min  
 Delta R.T.: 0.000 min  
 Response: 39889  
 Conc: 27.47 ng/ml

Instrument :  
 ECD\_O  
 ClientSampleId :



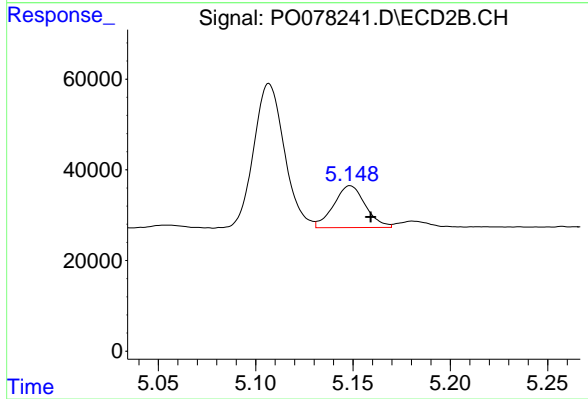
#13 AR-1232-3

R.T.: 0.000 min  
 Exp R.T. : 5.063 min  
 Response: 0  
 Conc: N.D.



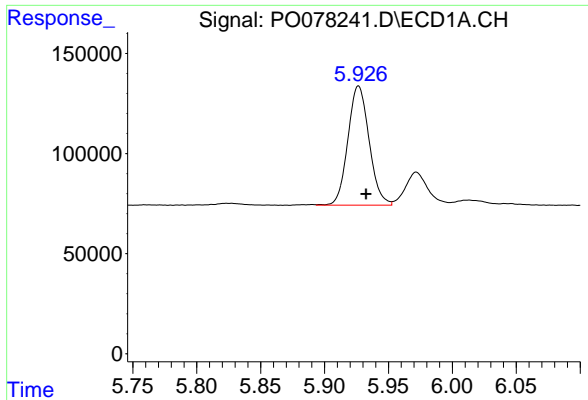
#14 AR-1232-4

R.T.: 0.000 min  
 Exp R.T. : 5.833 min  
 Response: 0  
 Conc: N.D.



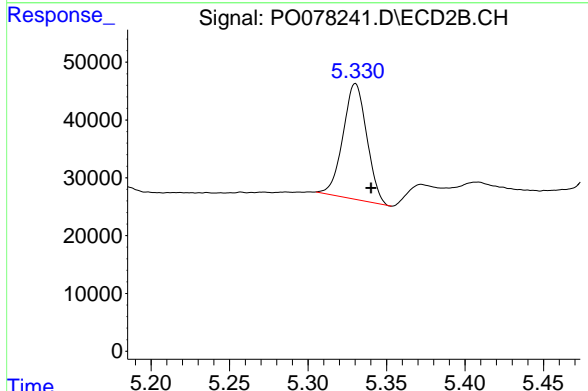
#14 AR-1232-4

R.T.: 5.149 min  
 Delta R.T.: -0.011 min  
 Response: 104784  
 Conc: 330.77 ng/ml

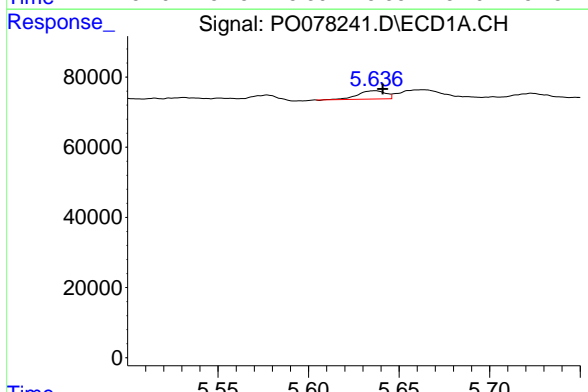


#15 AR-1232-5  
 R.T.: 5.927 min  
 Delta R.T.: -0.006 min  
 Response: 688374  
 Conc: 1402.00 ng/ml

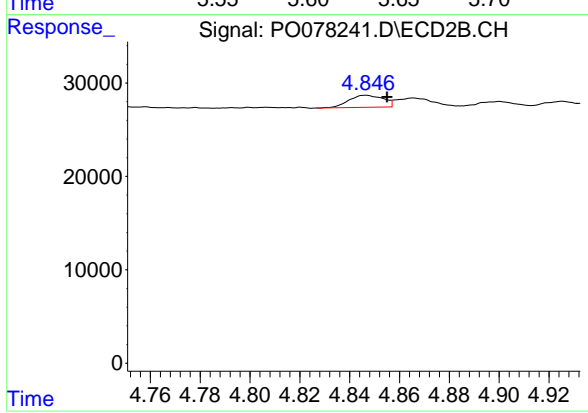
Instrument :  
 ECD\_O  
 ClientSampleId :



#15 AR-1232-5  
 R.T.: 5.330 min  
 Delta R.T.: -0.010 min  
 Response: 211388  
 Conc: 607.54 ng/ml

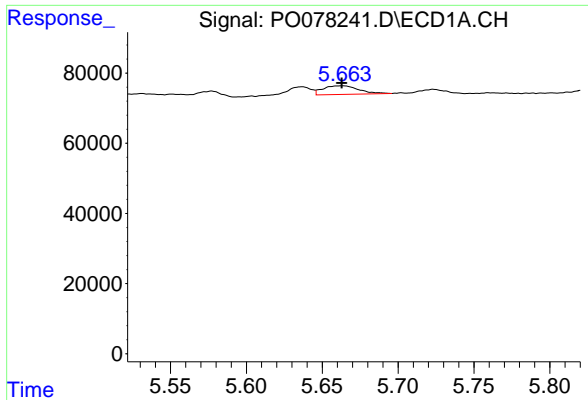


#16 AR-1242-1  
 R.T.: 5.637 min  
 Delta R.T.: -0.004 min  
 Response: 25551  
 Conc: 13.91 ng/ml



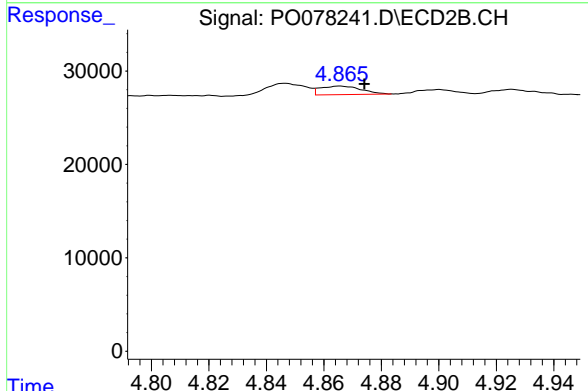
#16 AR-1242-1  
 R.T.: 4.846 min  
 Delta R.T.: -0.009 min  
 Response: 12265  
 Conc: 14.28 ng/ml



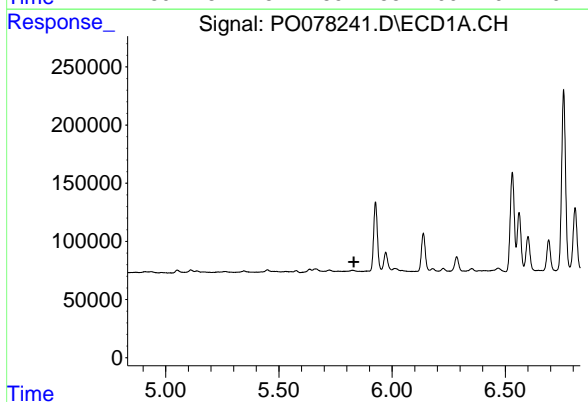


#17 AR-1242-2  
 R.T.: 5.663 min  
 Delta R.T.: 0.000 min  
 Response: 39889  
 Conc: 14.77 ng/ml

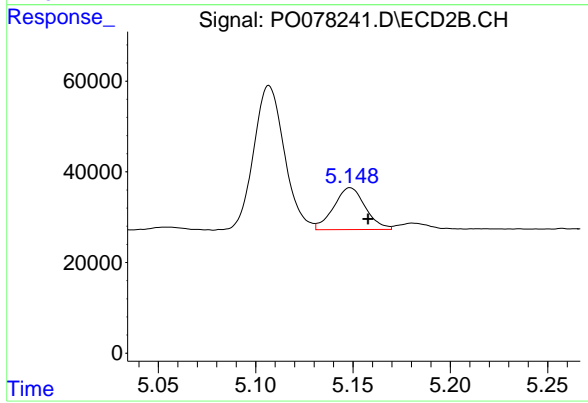
Instrument :  
 ECD\_O  
 ClientSampleId :



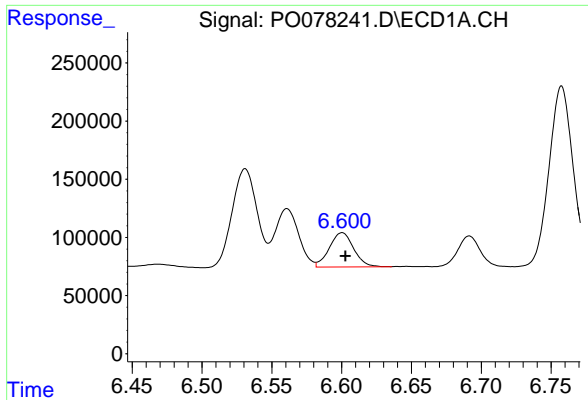
#17 AR-1242-2  
 R.T.: 4.866 min  
 Delta R.T.: -0.008 min  
 Response: 8998  
 Conc: 7.44 ng/ml



#19 AR-1242-4  
 R.T.: 0.000 min  
 Exp R.T. : 5.831 min  
 Response: 0  
 Conc: N.D.

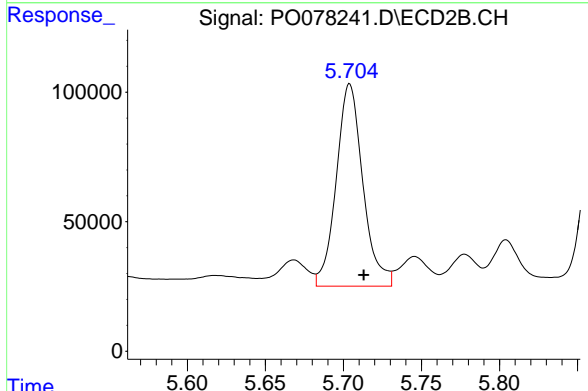


#19 AR-1242-4  
 R.T.: 5.149 min  
 Delta R.T.: -0.009 min  
 Response: 104784  
 Conc: 154.99 ng/ml

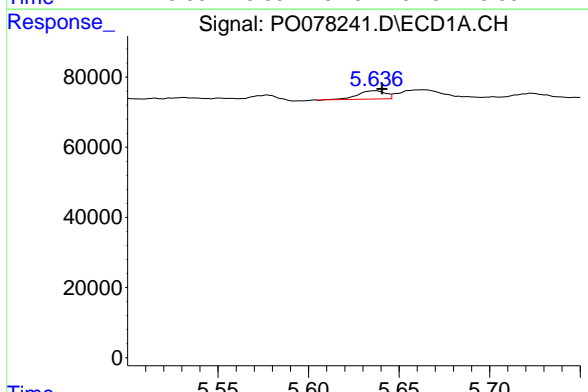


#20 AR-1242-5  
 R.T.: 6.600 min  
 Delta R.T.: -0.002 min  
 Response: 357427  
 Conc: 267.11 ng/ml

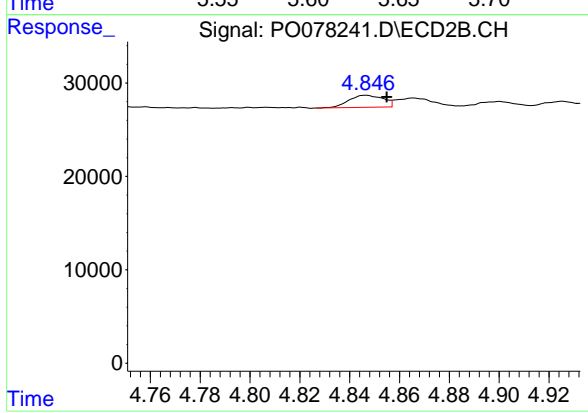
Instrument :  
 ECD\_O  
 ClientSampled :



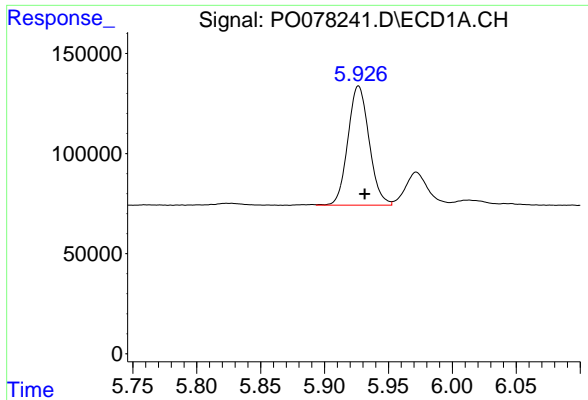
#20 AR-1242-5  
 R.T.: 5.704 min  
 Delta R.T.: -0.009 min  
 Response: 927489  
 Conc: 1131.07 ng/ml



#21 AR-1248-1  
 R.T.: 5.637 min  
 Delta R.T.: -0.004 min  
 Response: 25551  
 Conc: 17.93 ng/ml

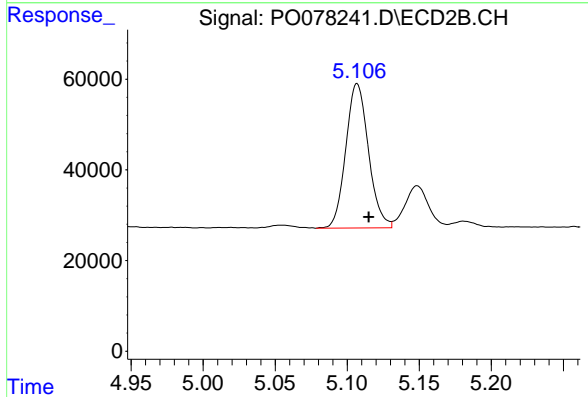


#21 AR-1248-1  
 R.T.: 4.846 min  
 Delta R.T.: -0.008 min  
 Response: 12265  
 Conc: 19.03 ng/ml

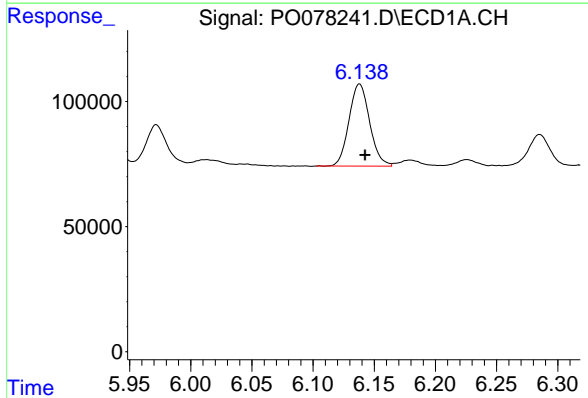


#22 AR-1248-2  
 R.T.: 5.927 min  
 Delta R.T.: -0.005 min  
 Response: 688374  
 Conc: 362.59 ng/ml

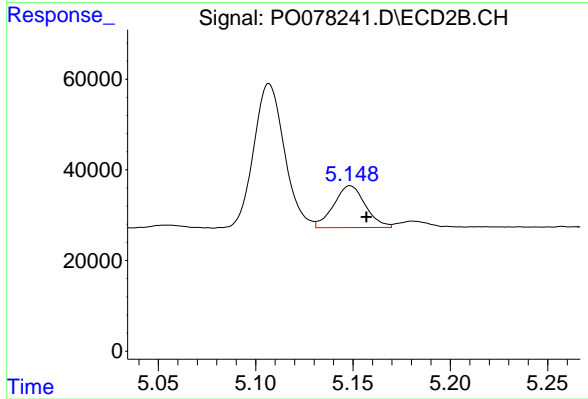
Instrument :  
 ECD\_O  
 ClientSampleId :



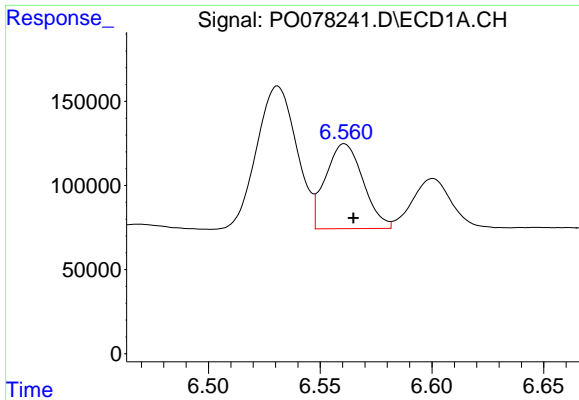
#22 AR-1248-2  
 R.T.: 5.107 min  
 Delta R.T.: -0.008 min  
 Response: 349403  
 Conc: 365.51 ng/ml



#23 AR-1248-3  
 R.T.: 6.138 min  
 Delta R.T.: -0.004 min  
 Response: 385299  
 Conc: 173.71 ng/ml



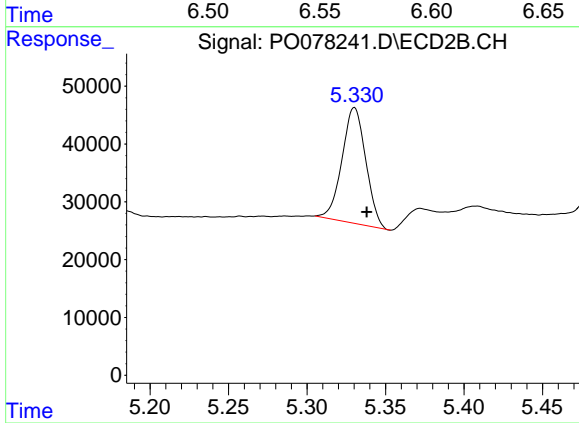
#23 AR-1248-3  
 R.T.: 5.149 min  
 Delta R.T.: -0.008 min  
 Response: 104784  
 Conc: 109.01 ng/ml



#24 AR-1248-4

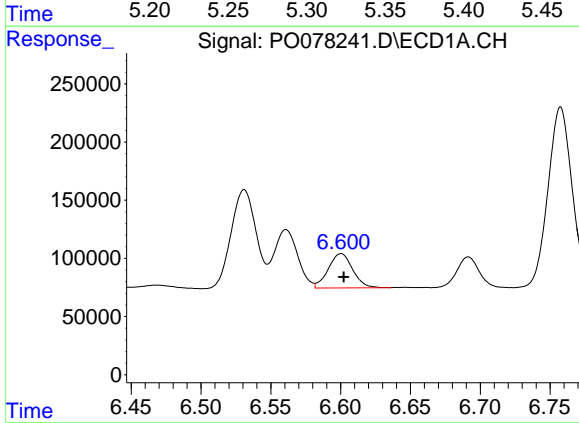
R.T.: 6.561 min  
 Delta R.T.: -0.004 min  
 Response: 590884  
 Conc: 253.86 ng/ml

Instrument :  
 ECD\_O  
 ClientSampleId :



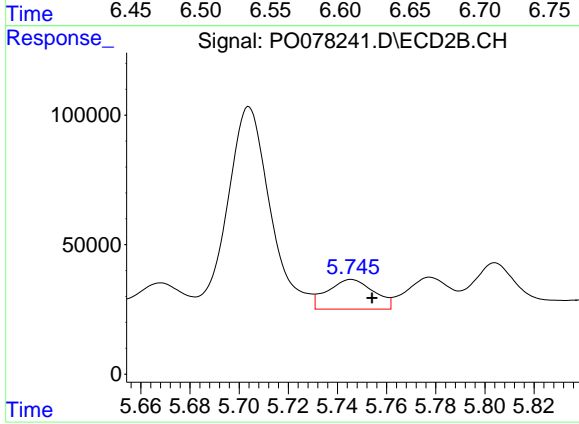
#24 AR-1248-4

R.T.: 5.330 min  
 Delta R.T.: -0.008 min  
 Response: 211388  
 Conc: 184.58 ng/ml



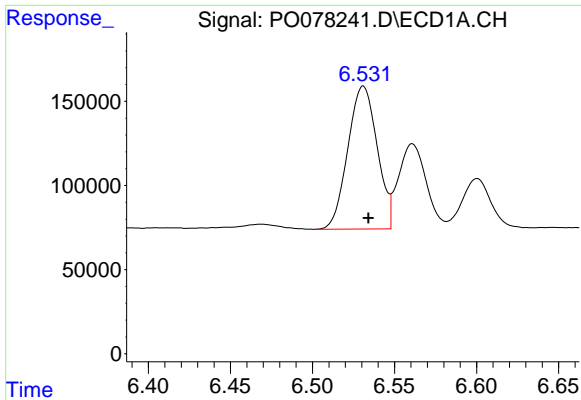
#25 AR-1248-5

R.T.: 6.600 min  
 Delta R.T.: -0.002 min  
 Response: 357427  
 Conc: 157.97 ng/ml



#25 AR-1248-5

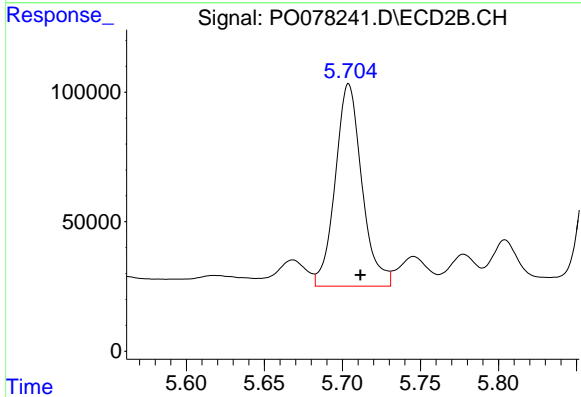
R.T.: 5.746 min  
 Delta R.T.: -0.008 min  
 Response: 149854  
 Conc: 143.01 ng/ml



#26 AR-1254-1

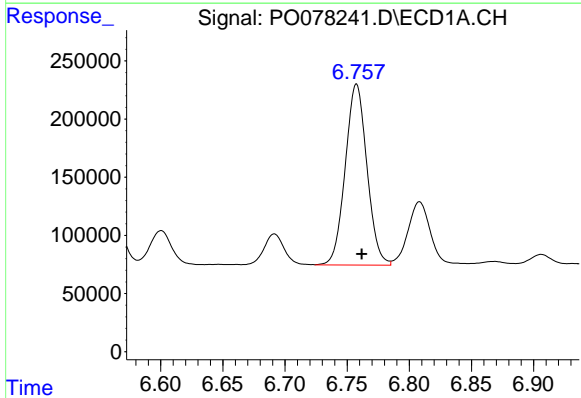
R.T.: 6.531 min  
 Delta R.T.: -0.003 min  
 Response: 1055446  
 Conc: 425.24 ng/ml

Instrument :  
 ECD\_O  
 ClientSampled :



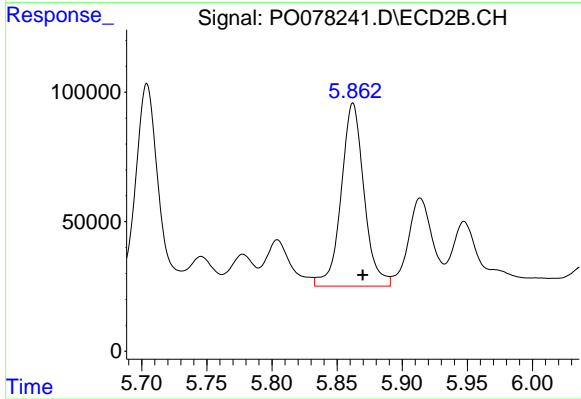
#26 AR-1254-1

R.T.: 5.704 min  
 Delta R.T.: -0.008 min  
 Response: 927489  
 Conc: 537.80 ng/ml



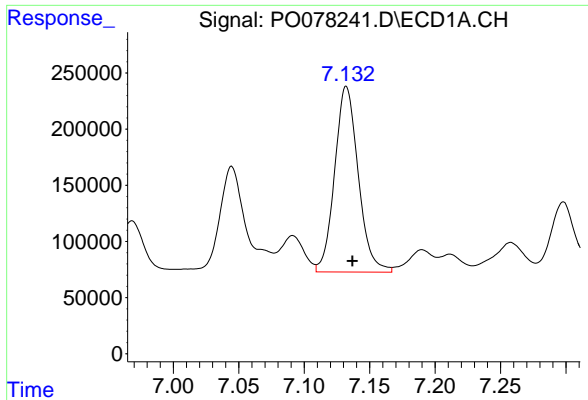
#27 AR-1254-2

R.T.: 6.758 min  
 Delta R.T.: -0.004 min  
 Response: 1892000  
 Conc: 487.56 ng/ml



#27 AR-1254-2

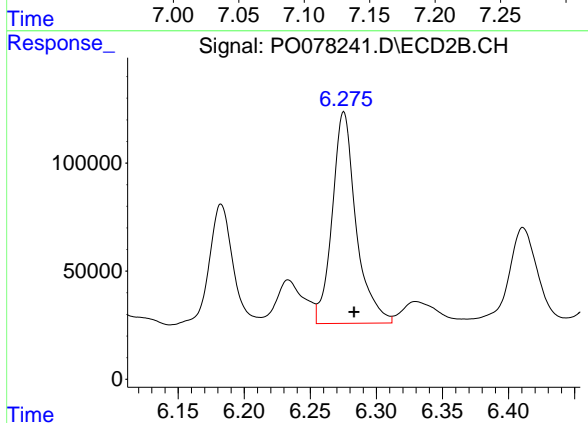
R.T.: 5.862 min  
 Delta R.T.: -0.007 min  
 Response: 862022  
 Conc: 537.77 ng/ml



#28 AR-1254-3

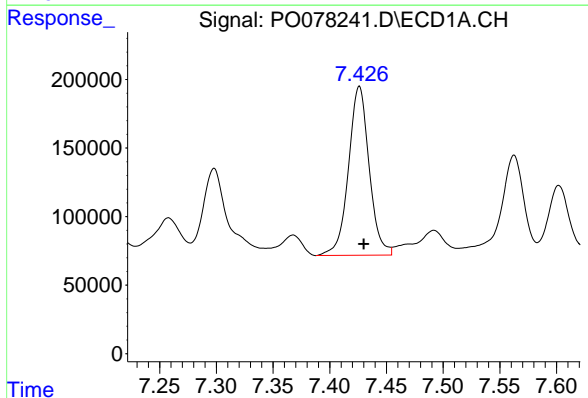
R.T.: 7.132 min  
Delta R.T.: -0.005 min  
Response: 2077598  
Conc: 529.55 ng/ml

Instrument :  
ECD\_O  
ClientSampled :



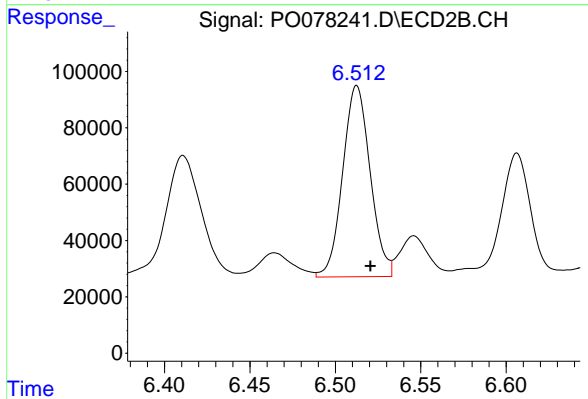
#28 AR-1254-3

R.T.: 6.275 min  
Delta R.T.: -0.008 min  
Response: 1227865  
Conc: 514.45 ng/ml



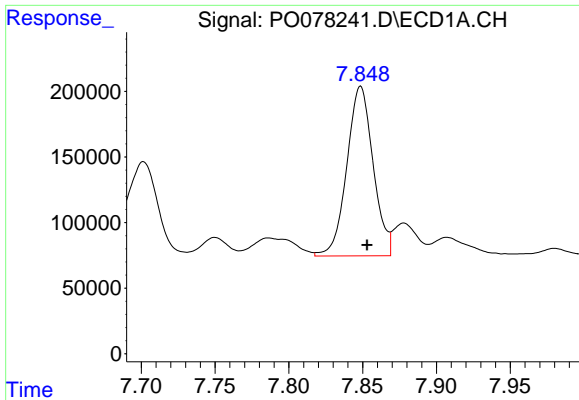
#29 AR-1254-4

R.T.: 7.426 min  
Delta R.T.: -0.004 min  
Response: 1562669  
Conc: 575.42 ng/ml



#29 AR-1254-4

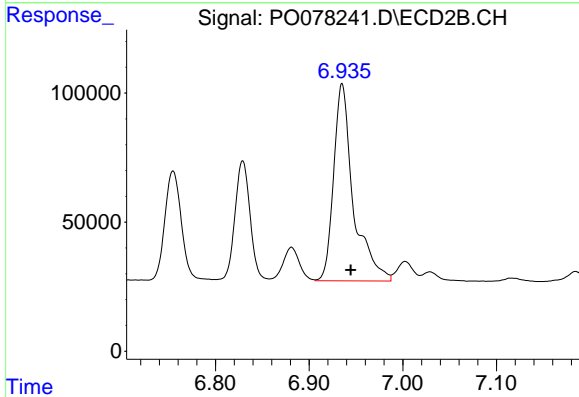
R.T.: 6.513 min  
Delta R.T.: -0.008 min  
Response: 760159  
Conc: 523.58 ng/ml



#30 AR-1254-5

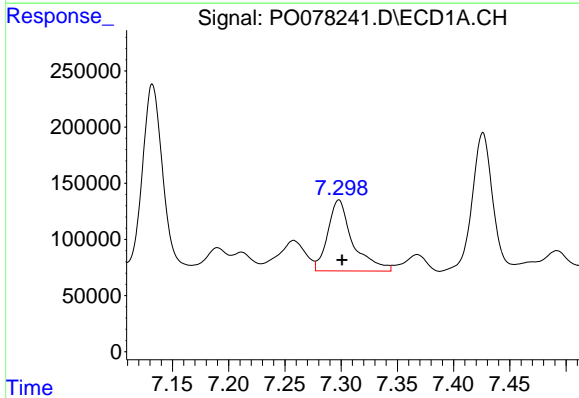
R.T.: 7.849 min  
 Delta R.T.: -0.004 min  
 Response: 1603768  
 Conc: 548.39 ng/ml

Instrument :  
 ECD\_O  
 ClientSampleId :



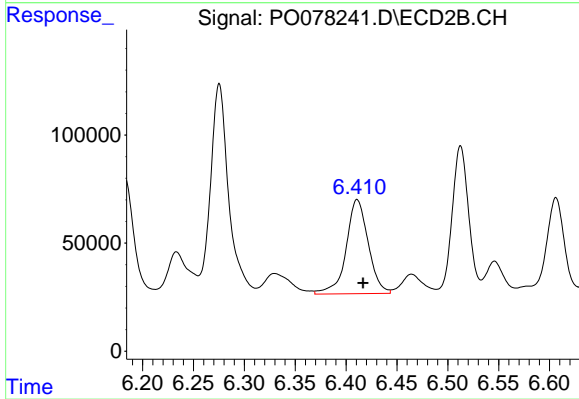
#30 AR-1254-5

R.T.: 6.935 min  
 Delta R.T.: -0.009 min  
 Response: 1115179  
 Conc: 490.63 ng/ml



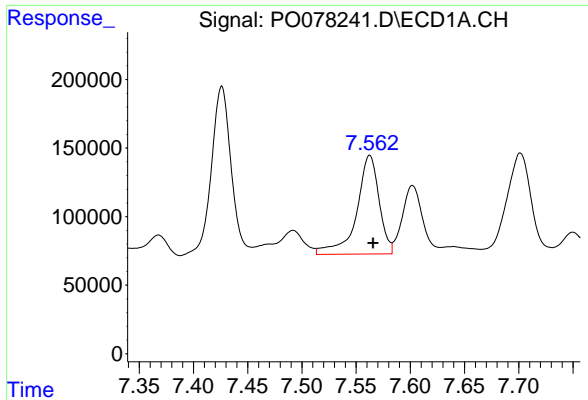
#31 AR-1260-1

R.T.: 7.298 min  
 Delta R.T.: -0.003 min  
 Response: 978060  
 Conc: 348.53 ng/ml



#31 AR-1260-1

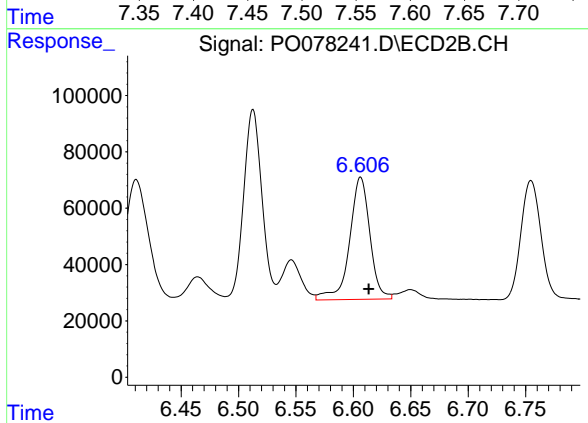
R.T.: 6.411 min  
 Delta R.T.: -0.006 min  
 Response: 658487  
 Conc: 410.97 ng/ml



#32 AR-1260-2

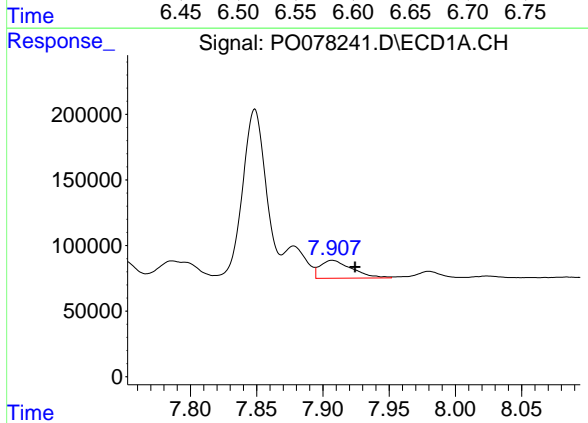
R.T.: 7.563 min  
 Delta R.T.: -0.003 min  
 Response: 1042099  
 Conc: 309.77 ng/ml

Instrument :  
 ECD\_O  
 ClientSampleId :



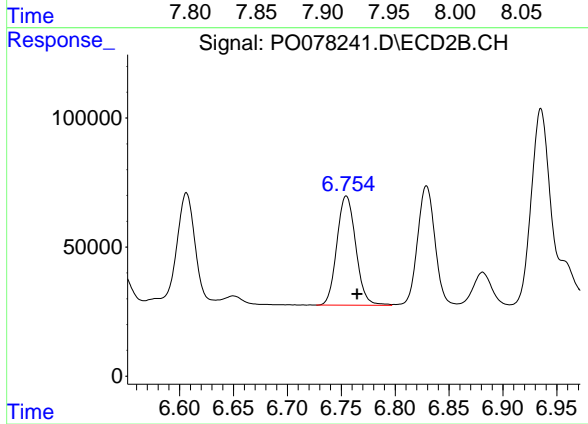
#32 AR-1260-2

R.T.: 6.606 min  
 Delta R.T.: -0.007 min  
 Response: 535917  
 Conc: 277.59 ng/ml



#33 AR-1260-3

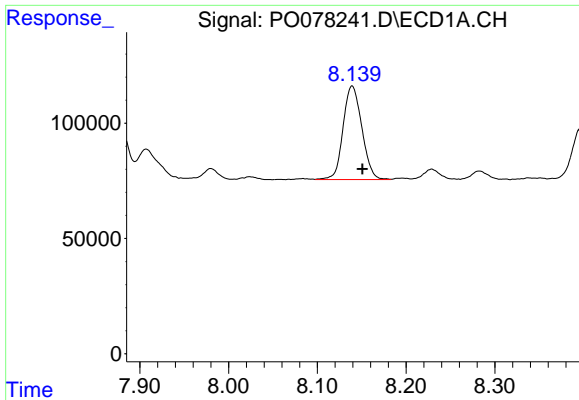
R.T.: 7.907 min  
 Delta R.T.: -0.017 min  
 Response: 229311  
 Conc: 93.98 ng/ml



#33 AR-1260-3

R.T.: 6.755 min  
 Delta R.T.: -0.010 min  
 Response: 516376  
 Conc: 281.46 ng/ml

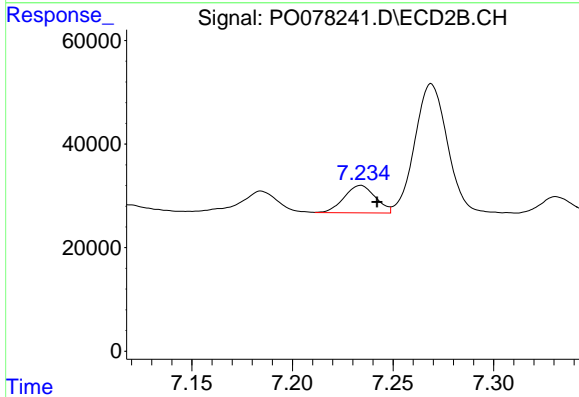




#34 AR-1260-4

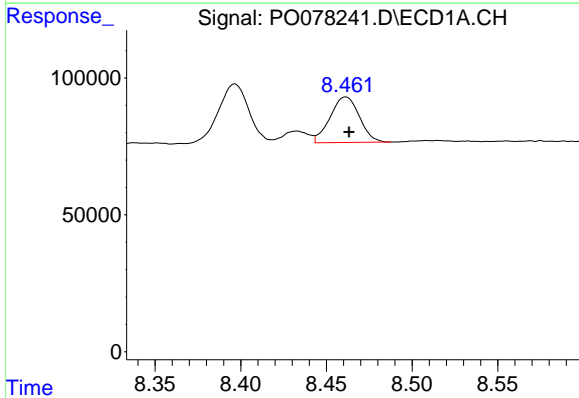
R.T.: 8.139 min  
 Delta R.T.: -0.012 min  
 Response: 596281  
 Conc: 222.60 ng/ml

Instrument :  
 ECD\_O  
 ClientSampleId :



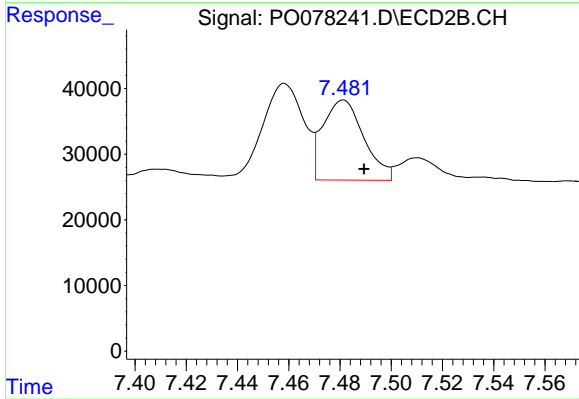
#34 AR-1260-4

R.T.: 7.234 min  
 Delta R.T.: -0.008 min  
 Response: 57522  
 Conc: 38.16 ng/ml



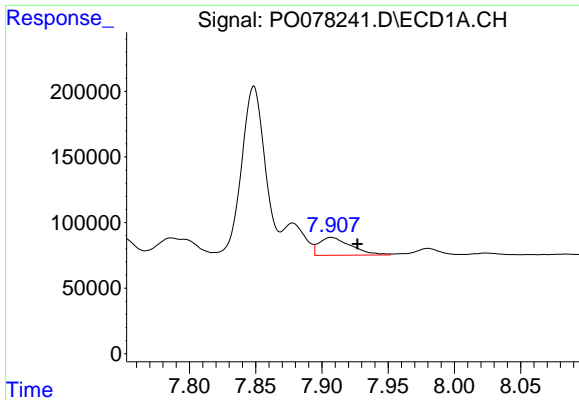
#35 AR-1260-5

R.T.: 8.461 min  
 Delta R.T.: -0.002 min  
 Response: 197931  
 Conc: 38.54 ng/ml



#35 AR-1260-5

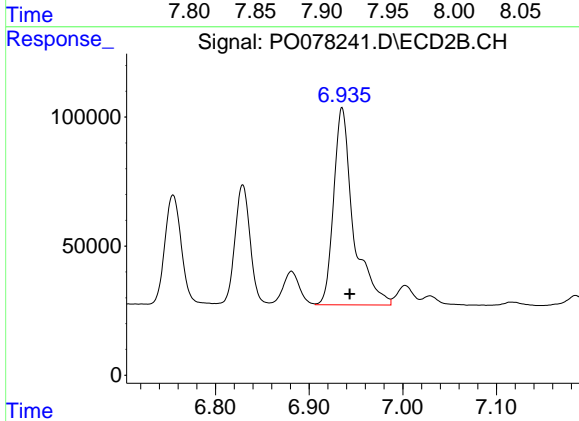
R.T.: 7.481 min  
 Delta R.T.: -0.008 min  
 Response: 135584  
 Conc: 38.88 ng/ml



#36 AR-1262-1

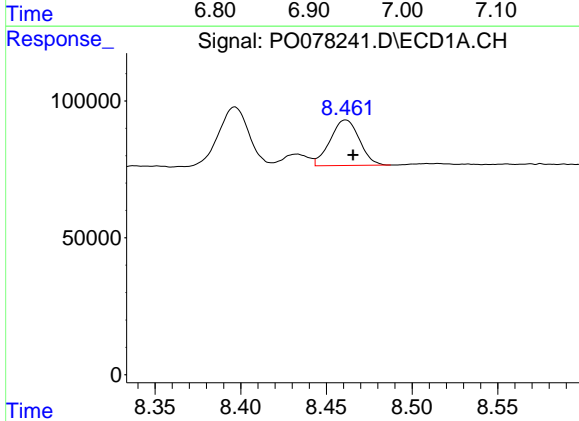
R.T.: 7.907 min  
 Delta R.T.: -0.020 min  
 Response: 229311  
 Conc: 64.01 ng/ml

Instrument :  
 ECD\_O  
 ClientSampled :



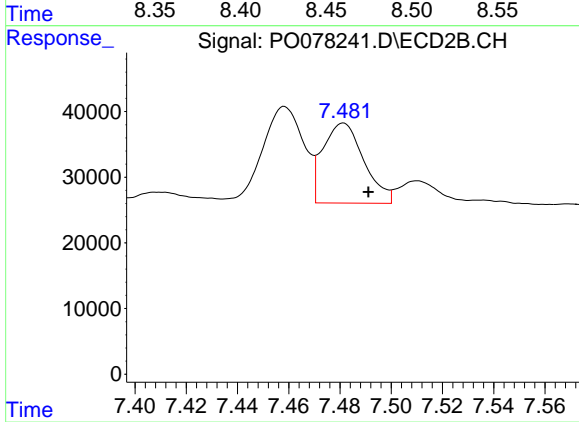
#36 AR-1262-1

R.T.: 6.935 min  
 Delta R.T.: -0.008 min  
 Response: 1115179  
 Conc: 950.38 ng/ml



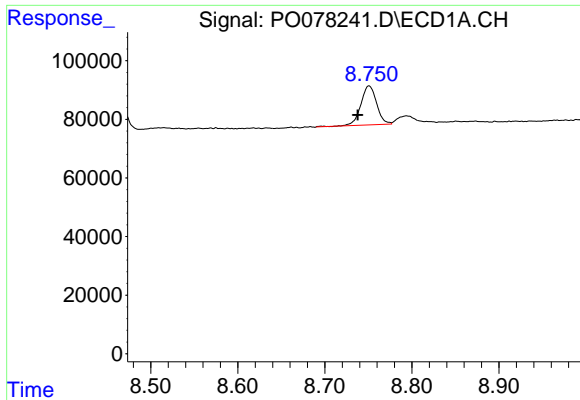
#37 AR-1262-2

R.T.: 8.461 min  
 Delta R.T.: -0.004 min  
 Response: 197931  
 Conc: 32.88 ng/ml



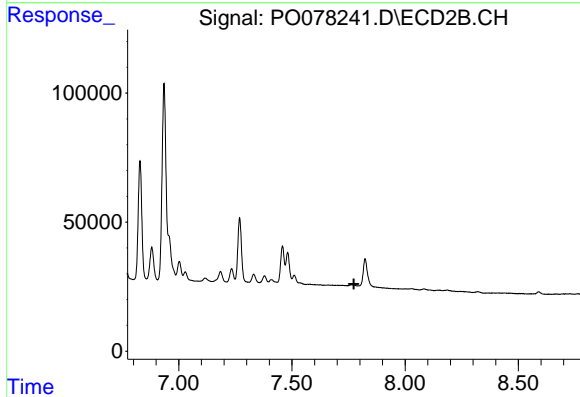
#37 AR-1262-2

R.T.: 7.481 min  
 Delta R.T.: -0.010 min  
 Response: 135584  
 Conc: 34.76 ng/ml

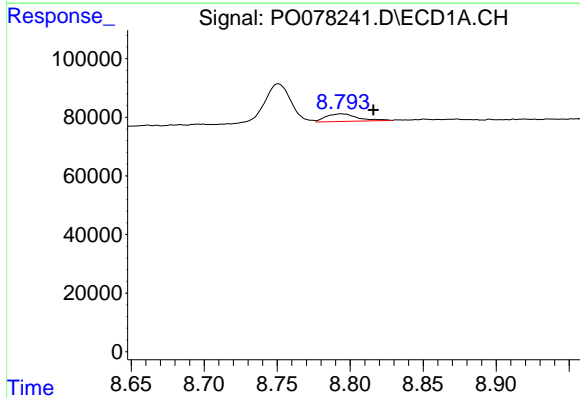


#38 AR-1262-3  
 R.T.: 8.751 min  
 Delta R.T.: 0.013 min  
 Response: 168642  
 Conc: 41.76 ng/ml

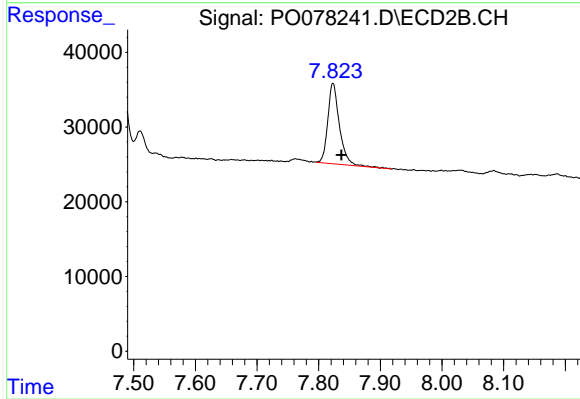
Instrument :  
 ECD\_O  
 ClientSampled :



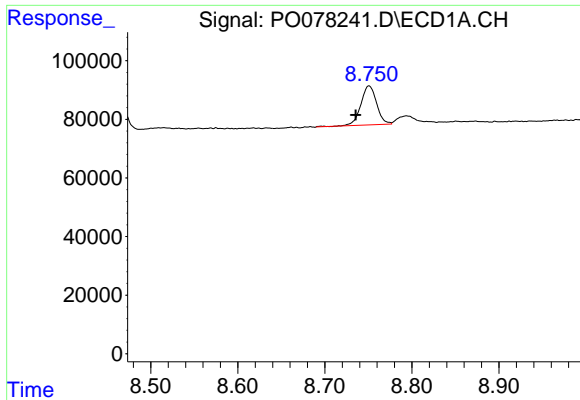
#38 AR-1262-3  
 R.T.: 0.000 min  
 Exp R.T. : 7.774 min  
 Response: 0  
 Conc: N.D.



#39 AR-1262-4  
 R.T.: 8.794 min  
 Delta R.T.: -0.022 min  
 Response: 38873  
 Conc: 12.47 ng/ml

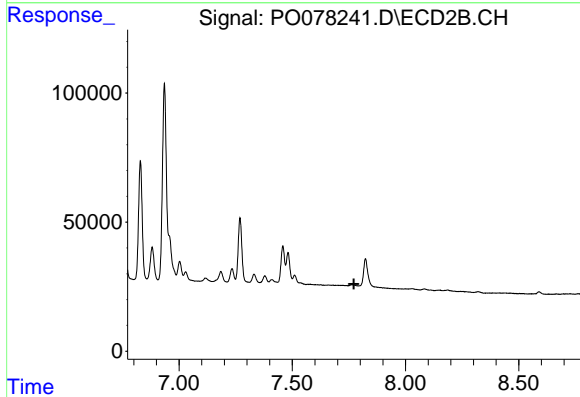


#39 AR-1262-4  
 R.T.: 7.823 min  
 Delta R.T.: -0.014 min  
 Response: 142059  
 Conc: 47.37 ng/ml

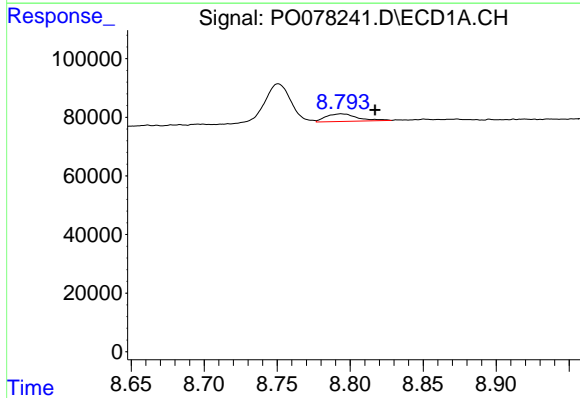


#41 AR-1268-1  
 R.T.: 8.751 min  
 Delta R.T.: 0.015 min  
 Response: 168642  
 Conc: 23.79 ng/ml

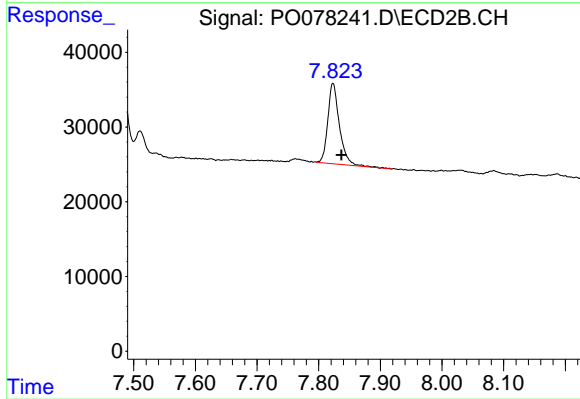
Instrument :  
 ECD\_O  
 ClientSampled :



#41 AR-1268-1  
 R.T.: 0.000 min  
 Exp R.T. : 7.772 min  
 Response: 0  
 Conc: N.D.



#42 AR-1268-2  
 R.T.: 8.794 min  
 Delta R.T.: -0.023 min  
 Response: 38873  
 Conc: 6.01 ng/ml



#42 AR-1268-2  
 R.T.: 7.823 min  
 Delta R.T.: -0.014 min  
 Response: 142059  
 Conc: 34.33 ng/ml