

Data Path : Z:\pestpcbsrv\HPCHEM1\ECD_0\Data\P0052722\
 Data File : P0086692.D
 Signal(s) : Signal #1: ECD1A.CH Signal #2: ECD2B.CH
 Acq On : 27 May 2022 11:04
 Operator : YP\AJ
 Sample : N3052-03 10X
 Misc :
 ALS Vial : 15 Sample Multiplier: 1

Instrument :
 ECD_0
 ClientSampleId :
 HEE613R-2-1

Integration File signal 1: autoint1.e
 Integration File signal 2: autoint2.e
 Quant Time: May 27 23:25:38 2022
 Quant Method : Z:\pestpcbsrv\HPCHEM1\ECD_0\methods\P0051122.M
 Quant Title : GC EXTRACTABLES
 QLast Update : Thu May 19 09:06:34 2022
 Response via : Initial Calibration
 Integrator: ChemStation 6890 Scale Mode: Small noise peaks clipped

Volume Inj. : 2 µl
 Signal #1 Phase : ZB-MR1 Signal #2 Phase: ZB-MR2
 Signal #1 Info : 30Mx0.32mmx 0.50µ Signal #2 Info : 30M x 0.32mm x 0.25µm

Compound	RT#1	RT#2	Resp#1	Resp#2	ng/ml	ng/ml

System Monitoring Compounds						
1) SA Tetrachlo...	4.478	3.672	150811	66008	1.484	1.515
2) SA Decachlor...	10.331	8.722	109305	51846	2.013	1.490 #

Target Compounds

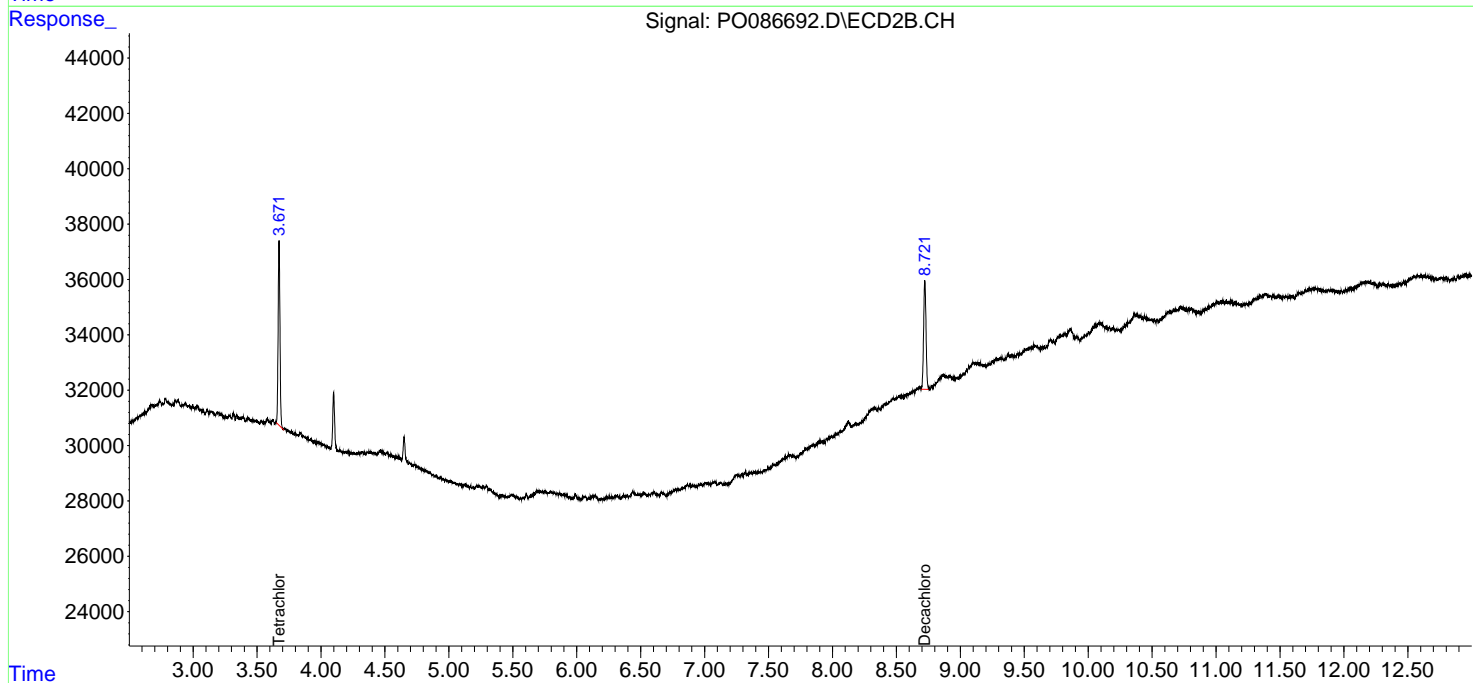
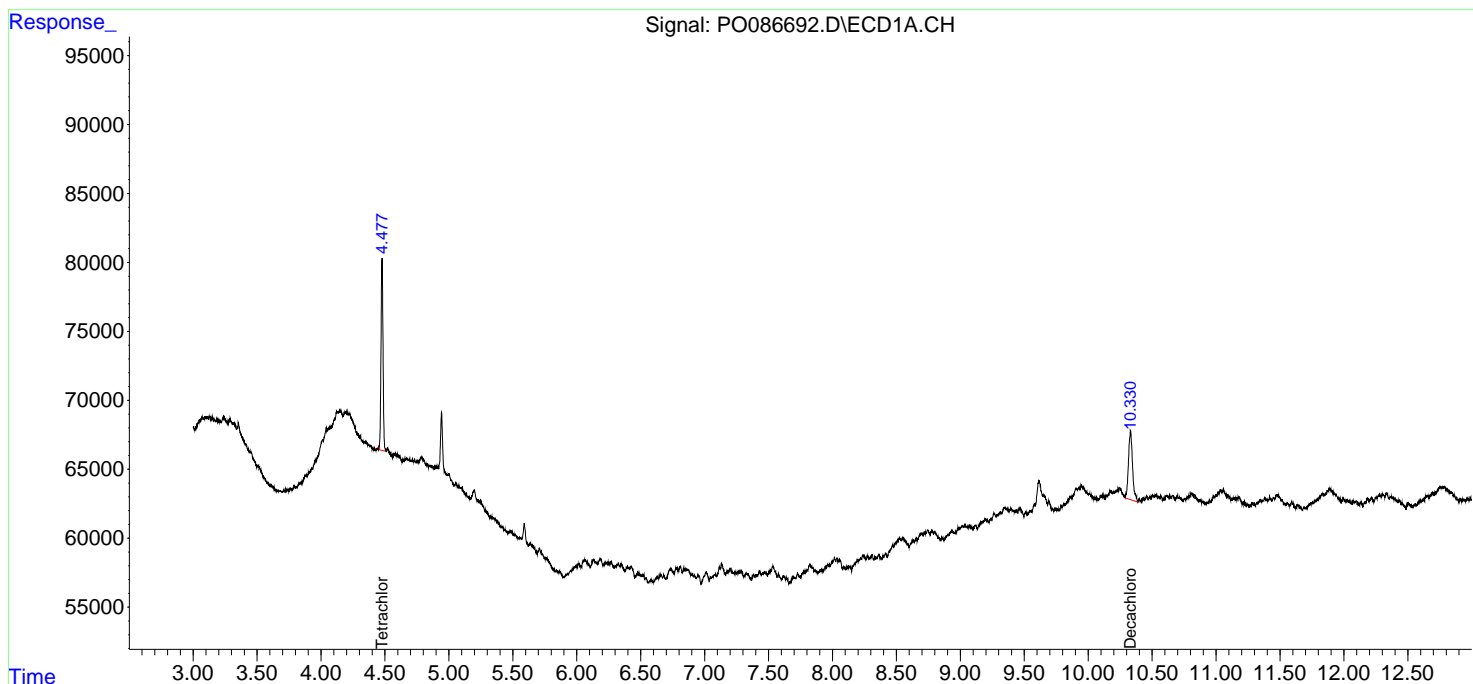
(f)=RT Delta > 1/2 Window (#)=Amounts differ by > 25% (m)=manual int.

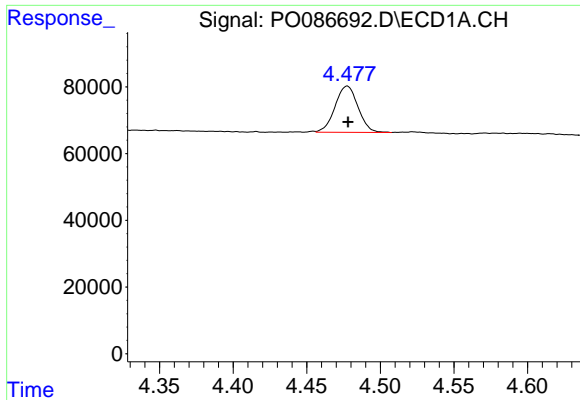
Data Path : Z:\pestpcbsrv\HPCHEM1\ECD_0\Data\P0052722\
 Data File : P0086692.D
 Signal(s) : Signal #1: ECD1A.CH Signal #2: ECD2B.CH
 Acq On : 27 May 2022 11:04
 Operator : YP\AJ
 Sample : N3052-03 10X
 Misc :
 ALS Vial : 15 Sample Multiplier: 1

Instrument :
 ECD_0
 ClientSampleId :
 HEE613R-2-1

Integration File signal 1: autoint1.e
 Integration File signal 2: autoint2.e
 Quant Time: May 27 23:25:38 2022
 Quant Method : Z:\pestpcbsrv\HPCHEM1\ECD_0\methods\P0051122.M
 Quant Title : GC EXTRACTABLES
 QLast Update : Thu May 19 09:06:34 2022
 Response via : Initial Calibration
 Integrator: ChemStation 6890 Scale Mode: Small noise peaks clipped

Volume Inj. : 2 µl
 Signal #1 Phase : ZB-MR1 Signal #2 Phase: ZB-MR2
 Signal #1 Info : 30Mx0.32mmx 0.50µ Signal #2 Info : 30M x 0.32mm x 0.25µm

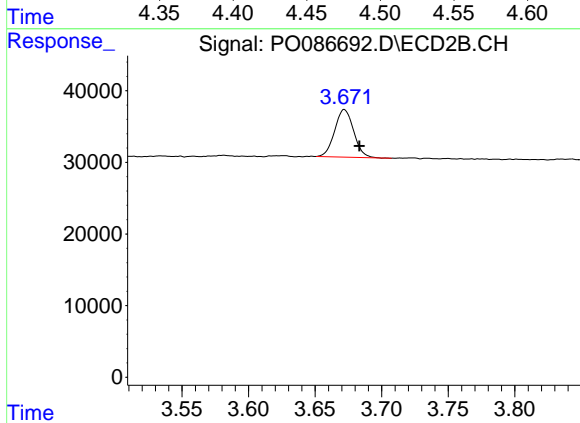




#1 Tetrachloro-m-xylene

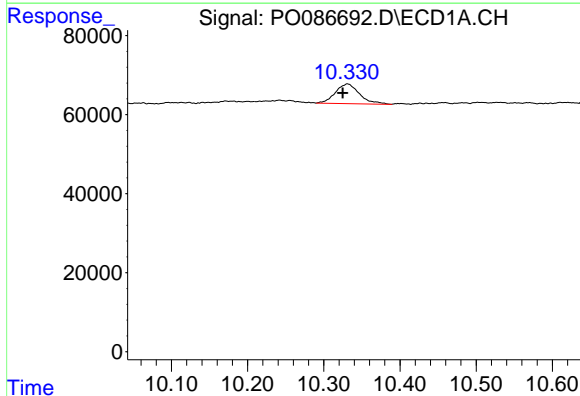
R.T.: 4.478 min
 Delta R.T.: 0.000 min
 Response: 150811
 Conc: 1.48 ng/ml

Instrument :
 ECD_O
 ClientSampleId :
 HEE613R-2-1



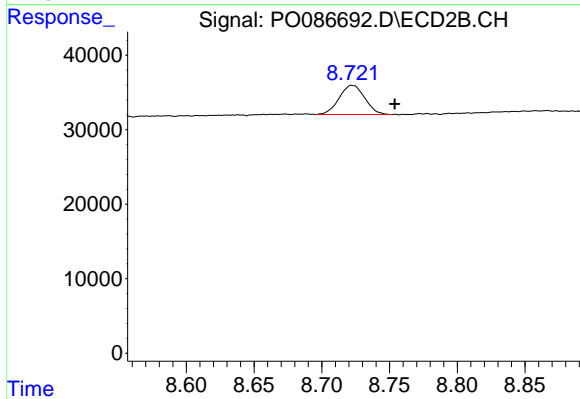
#1 Tetrachloro-m-xylene

R.T.: 3.672 min
 Delta R.T.: -0.011 min
 Response: 66008
 Conc: 1.52 ng/ml



#2 Decachlorobiphenyl

R.T.: 10.331 min
 Delta R.T.: 0.006 min
 Response: 109305
 Conc: 2.01 ng/ml



#2 Decachlorobiphenyl

R.T.: 8.722 min
 Delta R.T.: -0.032 min
 Response: 51846
 Conc: 1.49 ng/ml