

Data Path : Z:\pestpcbsrv\HPCHEM1\ECD_0\Data\P0052722\
 Data File : P0086748.D
 Signal(s) : Signal #1: ECD1A.CH Signal #2: ECD2B.CH
 Acq On : 28 May 2022 4:45
 Operator : YP\AJ
 Sample : N3062-01MS
 Misc :
 ALS Vial : 59 Sample Multiplier: 1

Instrument :
 ECD_0
ClientSampleId :
 FS-SOIL-0526MS

Manual Integrations
APPROVED

Reviewed By :Yogesh Patel 05/28/2022
 Supervised By :Ankita Jodhani 05/28/2022

Integration File signal 1: autoint1.e
 Integration File signal 2: autoint2.e
 Quant Time: May 28 06:40:00 2022
 Quant Method : Z:\pestpcbsrv\HPCHEM1\ECD_0\methods\P0051122.M
 Quant Title : GC EXTRACTABLES
 QLast Update : Thu May 19 09:06:34 2022
 Response via : Initial Calibration
 Integrator: ChemStation 6890 Scale Mode: Small noise peaks clipped

Volume Inj. : 2 µl
 Signal #1 Phase : ZB-MR2 Signal #2 Phase: ZB-MR2
 Signal #1 Info : 30Mx0.32mmx 0.50µ Signal #2 Info : 30M x 0.32mm x 0.25µm

Compound	RT#1	RT#2	Resp#1	Resp#2	ng/ml	ng/ml

System Monitoring Compounds						
1) SA Tetrachlo...	4.478	3.673	2649559	1058045	26.077	24.291
2) SA Decachlor...	10.332	8.723	1396439	835873	25.718	24.019
Target Compounds						
3) L1 AR-1016-1	5.660	4.774	2252201	1044835	704.720	669.011
4) L1 AR-1016-2	5.683	4.793	3131111	1413246	704.342	674.912
5) L1 AR-1016-3	5.746	4.970	1971377	756931	718.974	684.778
6) L1 AR-1016-4	5.846	5.012	1647200	595739	743.136	646.226
7) L1 AR-1016-5	6.143	5.227	1419221	737874	684.926	653.476
31) L7 AR-1260-1	7.280	6.265	2452610	1402728	810.401	720.708
32) L7 AR-1260-2	7.537	6.452	3129005	1673143	864.965	711.878m
33) L7 AR-1260-3	7.900	6.607	1822775	1547043	660.426	719.464
34) L7 AR-1260-4	8.129	7.081	2248893	1089442	666.539	605.033
35) L7 AR-1260-5	8.456	7.321	3755748	2576250	608.640	594.727

(f)=RT Delta > 1/2 Window (#)=Amounts differ by > 25% (m)=manual int.

Data Path : Z:\pestpcbsrv\HPCHEM1\ECD_O\Data\P0052722\
 Data File : P0086748.D
 Signal(s) : Signal #1: ECD1A.CH Signal #2: ECD2B.CH
 Acq On : 28 May 2022 4:45
 Operator : YP\AJ
 Sample : N3062-01MS
 Misc :
 ALS Vial : 59 Sample Multiplier: 1

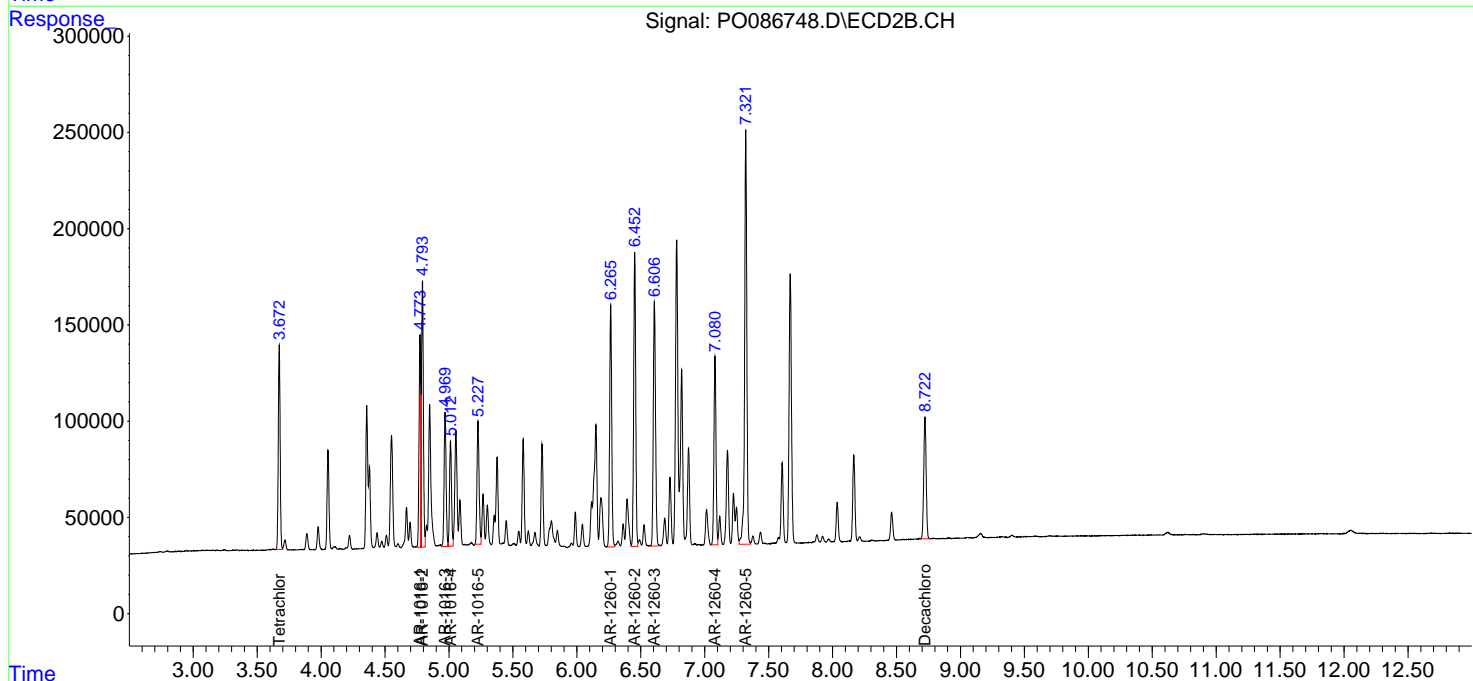
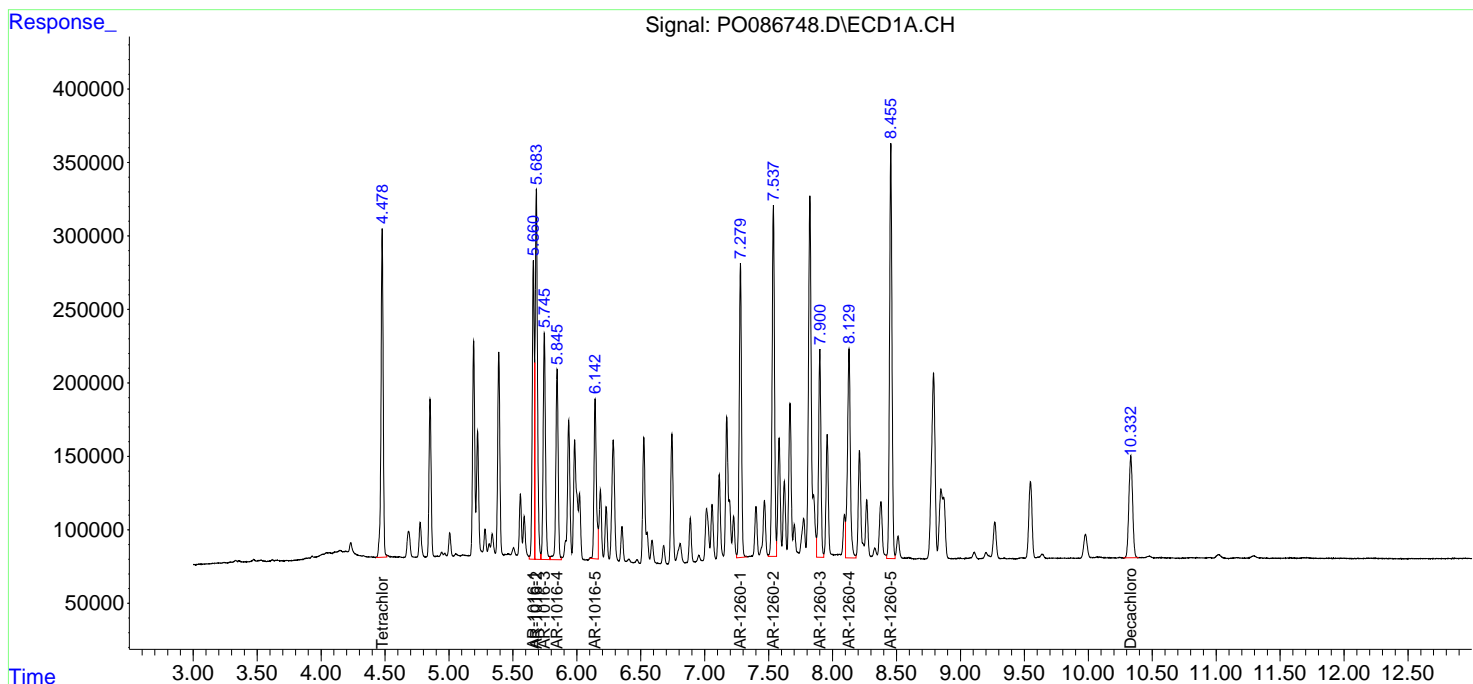
Instrument :
 ECD_O
 ClientSampleId :
 FS-SOIL-0526MS

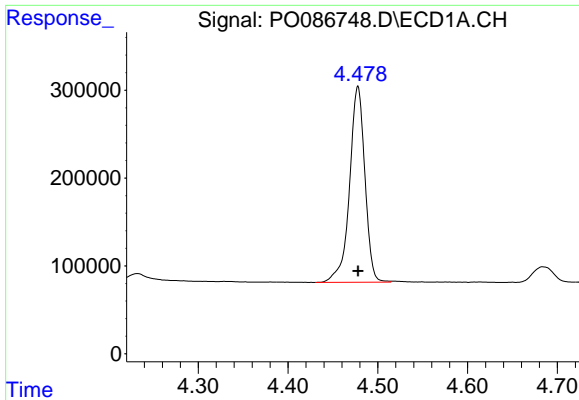
Manual Integrations
 APPROVED

Reviewed By :Yogesh Patel 05/28/2022
 Supervised By :Ankita Jodhani 05/28/2022

Integration File signal 1: autoint1.e
 Integration File signal 2: autoint2.e
 Quant Time: May 28 06:40:00 2022
 Quant Method : Z:\pestpcbsrv\HPCHEM1\ECD_O\methods\P0051122.M
 Quant Title : GC EXTRACTABLES
 QLast Update : Thu May 19 09:06:34 2022
 Response via : Initial Calibration
 Integrator: ChemStation 6890 Scale Mode: Small noise peaks clipped

Volume Inj. : 2 µl
 Signal #1 Phase : ZB-MR1 Signal #2 Phase: ZB-MR2
 Signal #1 Info : 30Mx0.32mmx 0.50µ Signal #2 Info : 30M x 0.32mm x 0.25µm



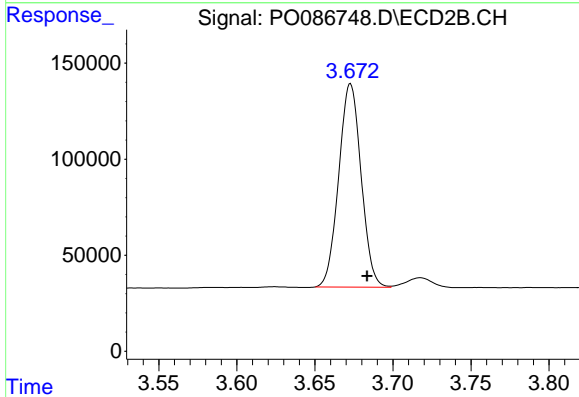


#1 Tetrachloro-m-xylene
 R.T.: 4.478 min
 Delta R.T.: 0.000 min
 Response: 2649559
 Conc: 26.08 ng/ml

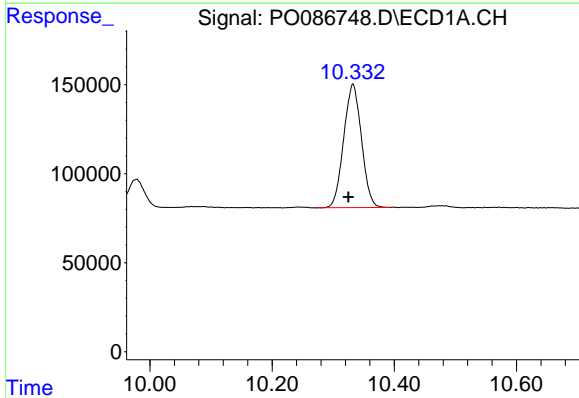
Instrument :
 ECD_O
 ClientSampleId :
 FS-SOIL-0526MS

Manual Integrations
 APPROVED

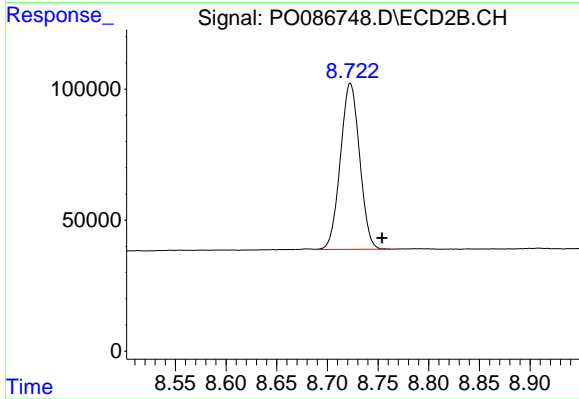
Reviewed By :Yogesh Patel 05/28/2022
 Supervised By :Ankita Jodhani 05/28/2022



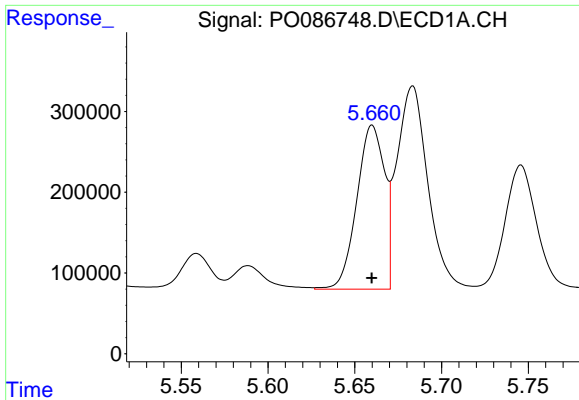
#1 Tetrachloro-m-xylene
 R.T.: 3.673 min
 Delta R.T.: -0.011 min
 Response: 1058045
 Conc: 24.29 ng/ml



#2 Decachlorobiphenyl
 R.T.: 10.332 min
 Delta R.T.: 0.007 min
 Response: 1396439
 Conc: 25.72 ng/ml



#2 Decachlorobiphenyl
 R.T.: 8.723 min
 Delta R.T.: -0.031 min
 Response: 835873
 Conc: 24.02 ng/ml



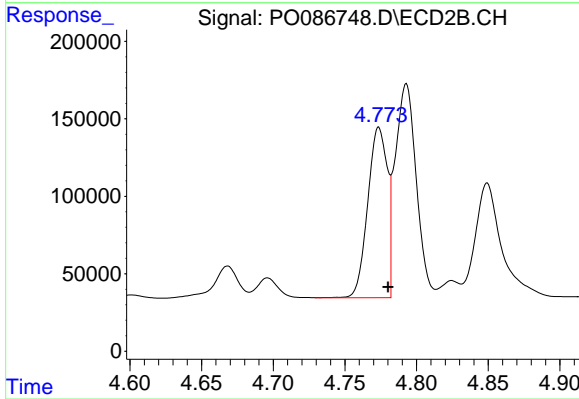
#3 AR-1016-1

R.T.: 5.660 min
 Delta R.T.: 0.000 min
 Response: 2252201
 Conc: 704.72 ng/ml

Instrument :
 ECD_O
 ClientSampleId :
 FS-SOIL-0526MS

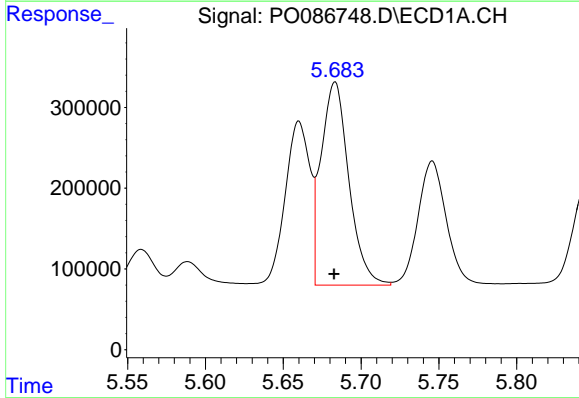
Manual Integrations
 APPROVED

Reviewed By :Yogesh Patel 05/28/2022
 Supervised By :Ankita Jodhani 05/28/2022



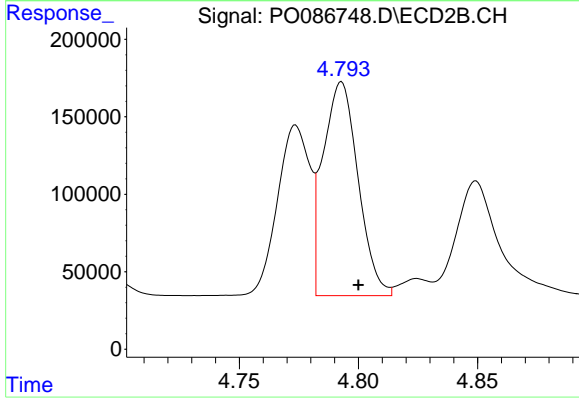
#3 AR-1016-1

R.T.: 4.774 min
 Delta R.T.: -0.006 min
 Response: 1044835
 Conc: 669.01 ng/ml



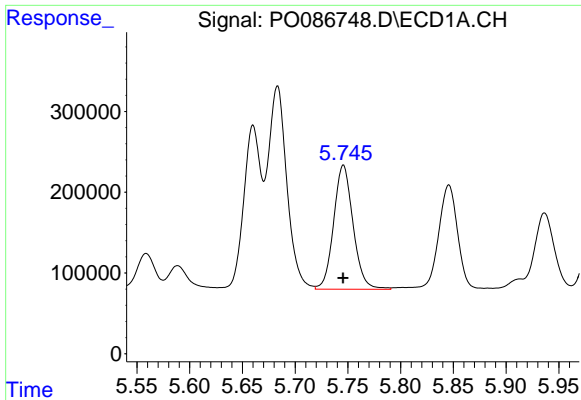
#4 AR-1016-2

R.T.: 5.683 min
 Delta R.T.: 0.000 min
 Response: 3131111
 Conc: 704.34 ng/ml



#4 AR-1016-2

R.T.: 4.793 min
 Delta R.T.: -0.007 min
 Response: 1413246
 Conc: 674.91 ng/ml



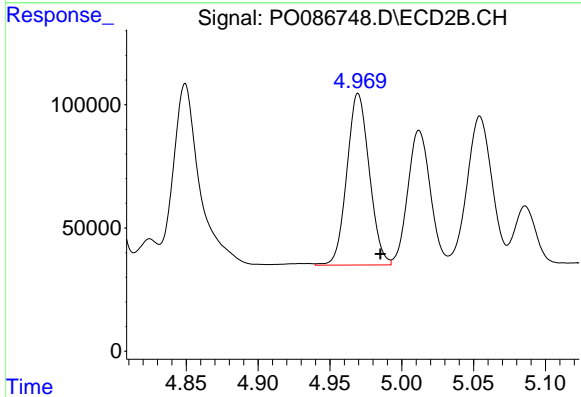
#5 AR-1016-3

R.T.: 5.746 min
 Delta R.T.: 0.000 min
 Response: 1971377
 Conc: 718.97 ng/ml

Instrument :
 ECD_O
 ClientSampleId :
 FS-SOIL-0526MS

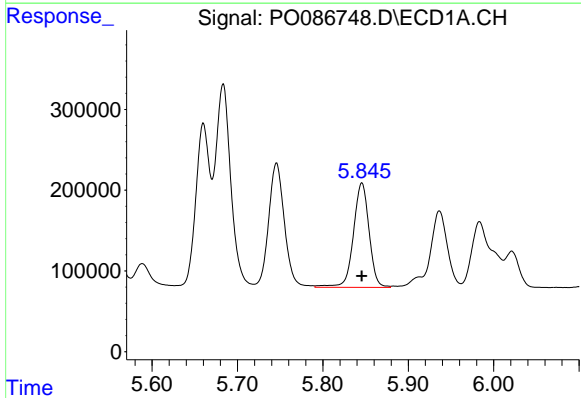
Manual Integrations
 APPROVED

Reviewed By :Yogesh Patel 05/28/2022
 Supervised By :Ankita Jodhani 05/28/2022



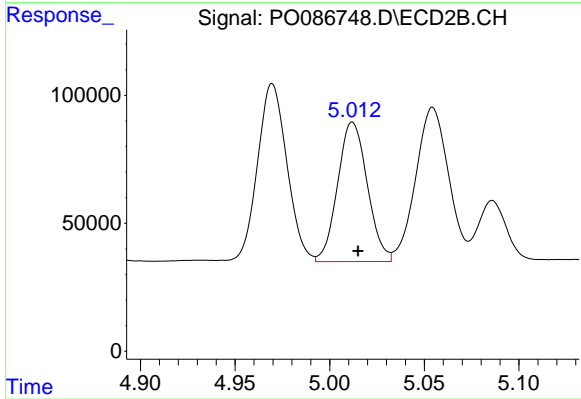
#5 AR-1016-3

R.T.: 4.970 min
 Delta R.T.: -0.015 min
 Response: 756931
 Conc: 684.78 ng/ml



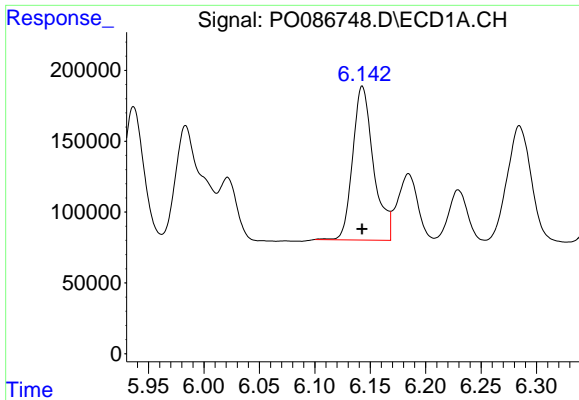
#6 AR-1016-4

R.T.: 5.846 min
 Delta R.T.: 0.000 min
 Response: 1647200
 Conc: 743.14 ng/ml



#6 AR-1016-4

R.T.: 5.012 min
 Delta R.T.: -0.003 min
 Response: 595739
 Conc: 646.23 ng/ml



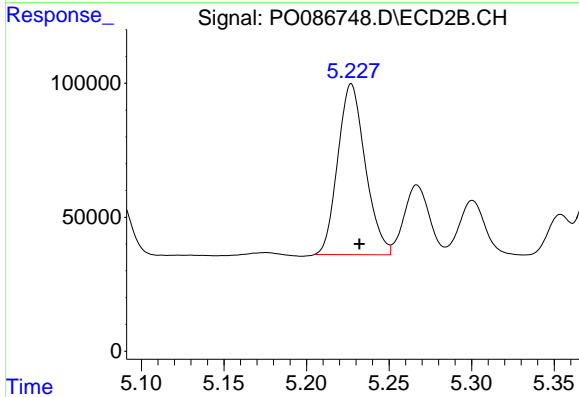
#7 AR-1016-5

R.T.: 6.143 min
 Delta R.T.: 0.000 min
 Response: 1419221
 Conc: 684.93 ng/ml

Instrument :
 ECD_O
 ClientSampleId :
 FS-SOIL-0526MS

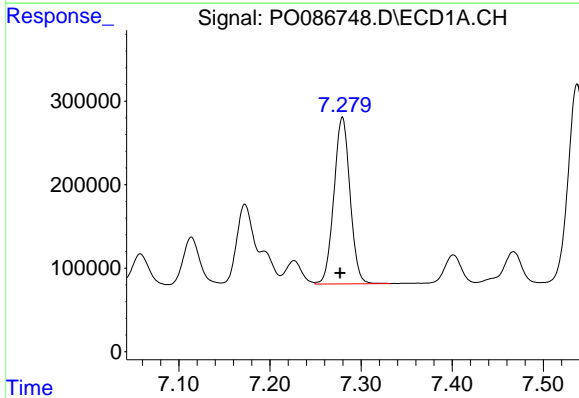
Manual Integrations
 APPROVED

Reviewed By :Yogesh Patel 05/28/2022
 Supervised By :Ankita Jodhani 05/28/2022



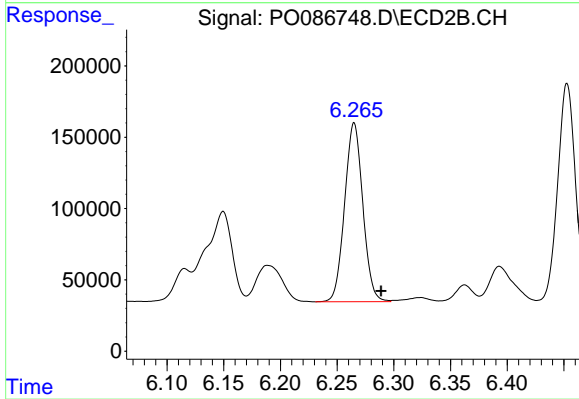
#7 AR-1016-5

R.T.: 5.227 min
 Delta R.T.: -0.005 min
 Response: 737874
 Conc: 653.48 ng/ml



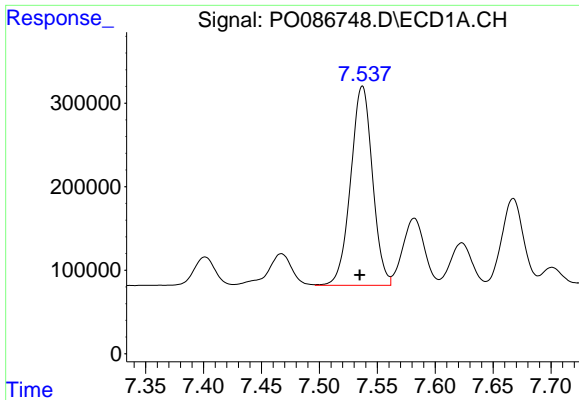
#31 AR-1260-1

R.T.: 7.280 min
 Delta R.T.: 0.003 min
 Response: 2452610
 Conc: 810.40 ng/ml



#31 AR-1260-1

R.T.: 6.265 min
 Delta R.T.: -0.024 min
 Response: 1402728
 Conc: 720.71 ng/ml



#32 AR-1260-2

R.T.: 7.537 min
 Delta R.T.: 0.002 min
 Response: 3129005
 Conc: 864.97 ng/ml

Instrument :

ECD_O

ClientSampleId :

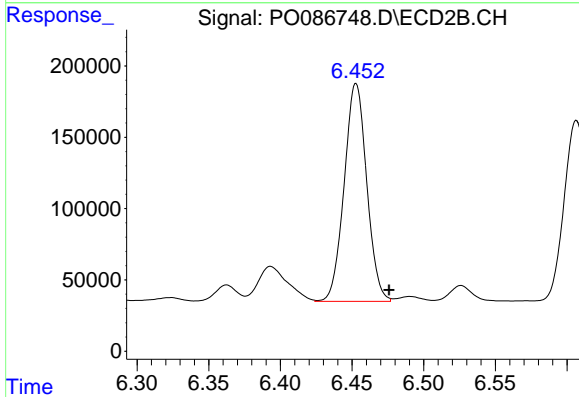
FS-SOIL-0526MS

Manual Integrations

APPROVED

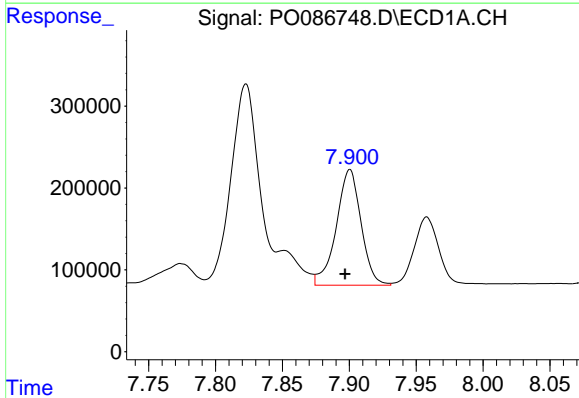
Reviewed By :Yogesh Patel 05/28/2022

Supervised By :Ankita Jodhani 05/28/2022



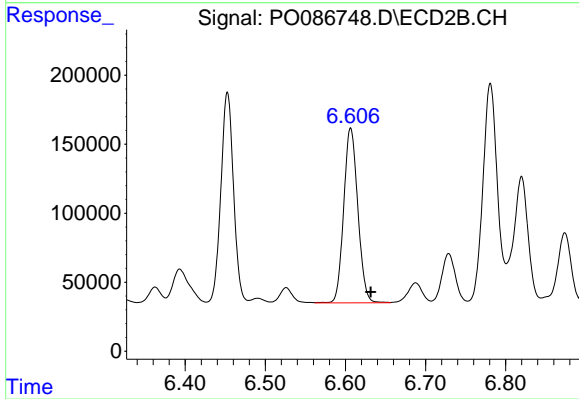
#32 AR-1260-2

R.T.: 6.452 min
 Delta R.T.: -0.024 min
 Response: 1673143
 Conc: 711.88 ng/ml m



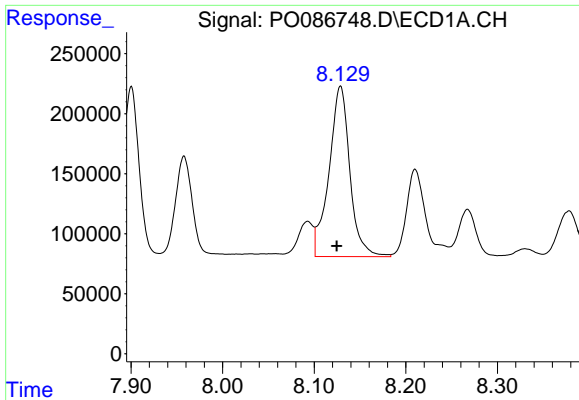
#33 AR-1260-3

R.T.: 7.900 min
 Delta R.T.: 0.004 min
 Response: 1822775
 Conc: 660.43 ng/ml



#33 AR-1260-3

R.T.: 6.607 min
 Delta R.T.: -0.025 min
 Response: 1547043
 Conc: 719.46 ng/ml



#34 AR-1260-4

R.T.: 8.129 min
 Delta R.T.: 0.004 min
 Response: 2248893
 Conc: 666.54 ng/ml

Instrument :

ECD_O

ClientSampleId :

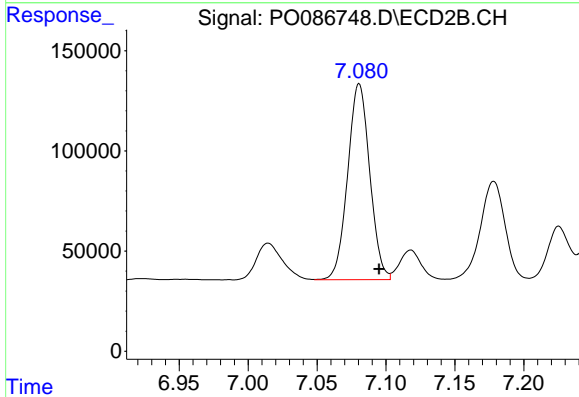
FS-SOIL-0526MS

Manual Integrations

APPROVED

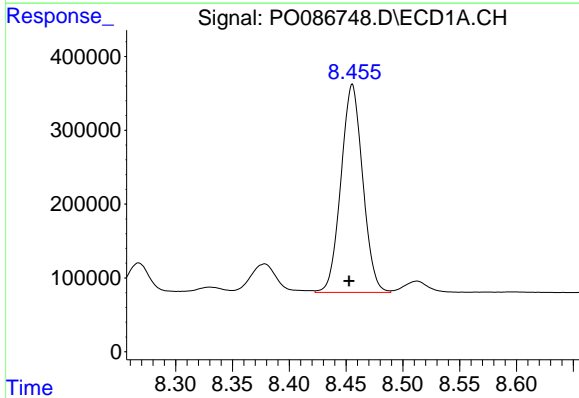
Reviewed By :Yogesh Patel 05/28/2022

Supervised By :Ankita Jodhani 05/28/2022



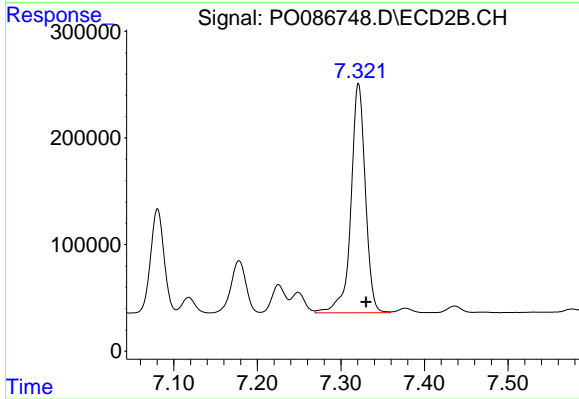
#34 AR-1260-4

R.T.: 7.081 min
 Delta R.T.: -0.014 min
 Response: 1089442
 Conc: 605.03 ng/ml



#35 AR-1260-5

R.T.: 8.456 min
 Delta R.T.: 0.003 min
 Response: 3755748
 Conc: 608.64 ng/ml



#35 AR-1260-5

R.T.: 7.321 min
 Delta R.T.: -0.009 min
 Response: 2576250
 Conc: 594.73 ng/ml