

Data Path : Z:\pestpcbsrv\HPCHEM1\ECD\_0\Data\P0052825\  
 Data File : P0111316.D  
 Signal(s) : Signal #1: ECD1A.ch Signal #2: ECD2B.ch  
 Acq On : 28 May 2025 16:30  
 Operator : YP/AJ  
 Sample : AR1242CCC500  
 Misc :  
 ALS Vial : 4 Sample Multiplier: 1

**Instrument :**  
 ECD\_0  
**ClientSampleId :**  
 AR1242CCC500

**Manual Integrations**  
**APPROVED**  
 Reviewed By :Yogesh Patel 05/29/2025  
 Supervised By :mohammad ahmed 05/30/2025

Integration File signal 1: autoint1.e  
 Integration File signal 2: autoint2.e  
 Quant Time: May 29 02:08:13 2025  
 Quant Method : Z:\pestpcbsrv\HPCHEM1\ECD\_0\methods\P0051525.M  
 Quant Title : GC EXTRACTABLES  
 QLast Update : Thu May 15 07:11:53 2025  
 Response via : Initial Calibration  
 Integrator: ChemStation

Volume Inj. : 2 µl  
 Signal #1 Phase : ZB-MR1 Signal #2 Phase: ZB-MR2  
 Signal #1 Info : 30Mx0.32mmx 0.50µ Signal #2 Info : 30M x 0.32mm x 0.25µm

Compound	RT#1	RT#2	Resp#1	Resp#2	ng/ml	ng/ml
-----						
System Monitoring Compounds						
1) SA Tetrachlo...	3.680	3.677	309.5E6	286.2E6	52.614	52.498
2) SA Decachlor...	8.718	8.667	224.6E6	83158541	43.510	44.947m
Target Compounds						
16) L4 AR-1242-1	4.769	4.755	102.9E6	84238328	538.364	522.873
17) L4 AR-1242-2	4.788	4.774	148.3E6	121.7E6	545.228	518.684
18) L4 AR-1242-3	4.845	4.949	103.5E6	64757436	556.424	523.848
19) L4 AR-1242-4	4.964	5.033	80480883	63370410	544.525	512.642
20) L4 AR-1242-5	5.617	5.554	83998776	79295764	540.039	521.728
-----						

(f)=RT Delta > 1/2 Window (#)=Amounts differ by > 25% (m)=manual int.

Data Path : Z:\pestpcbsrv\HPCHEM1\ECD\_O\Data\PO052825\  
 Data File : PO111316.D  
 Signal(s) : Signal #1: ECD1A.ch Signal #2: ECD2B.ch  
 Acq On : 28 May 2025 16:30  
 Operator : YP/AJ  
 Sample : AR1242CCC500  
 Misc :  
 ALS Vial : 4 Sample Multiplier: 1

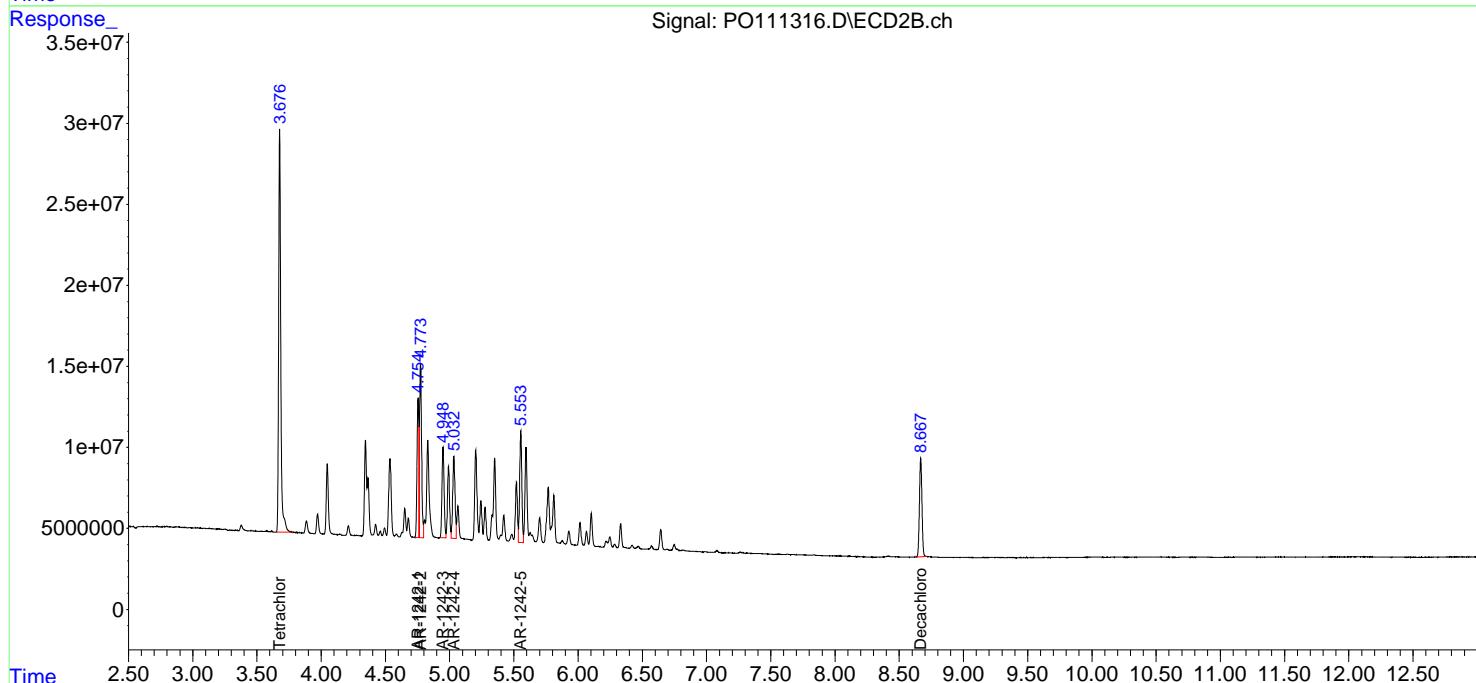
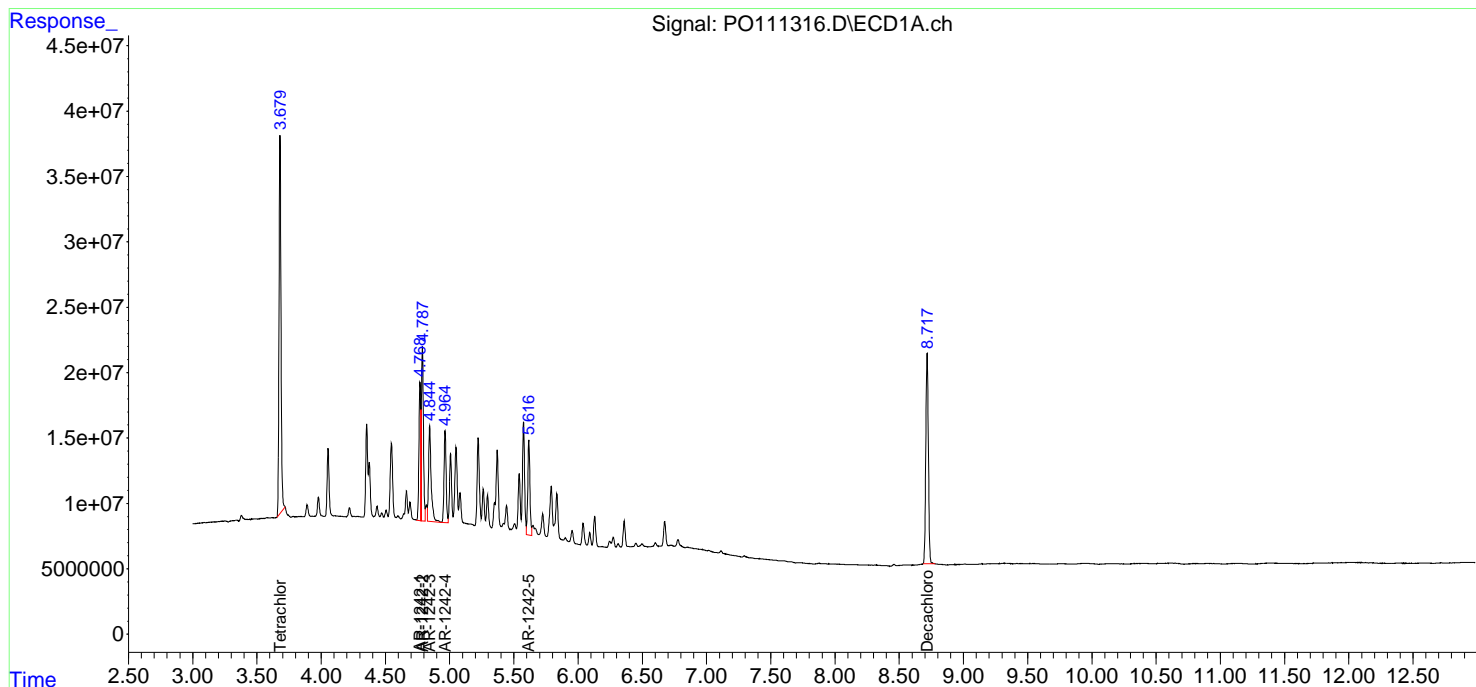
**Instrument :**  
 ECD\_O  
**ClientSampleId :**  
 AR1242CCC500

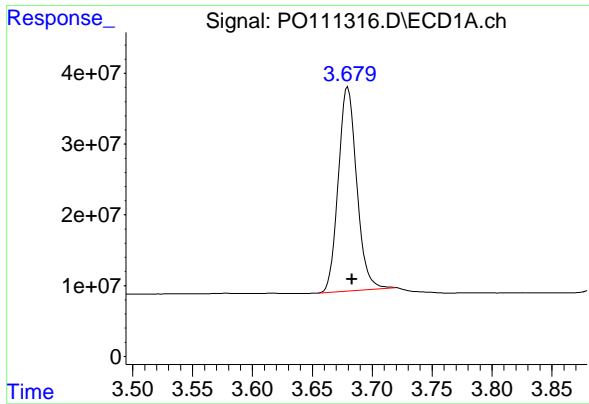
**Manual Integrations**  
**APPROVED**

Reviewed By :Yogesh Patel 05/29/2025  
 Supervised By :mohammad ahmed 05/30/2025

Integration File signal 1: autoint1.e  
 Integration File signal 2: autoint2.e  
 Quant Time: May 29 02:08:13 2025  
 Quant Method : Z:\pestpcbsrv\HPCHEM1\ECD\_O\methods\PO051525.M  
 Quant Title : GC EXTRACTABLES  
 QLast Update : Thu May 15 07:11:53 2025  
 Response via : Initial Calibration  
 Integrator: ChemStation

Volume Inj. : 2 µl  
 Signal #1 Phase : ZB-MR1 Signal #2 Phase: ZB-MR2  
 Signal #1 Info : 30Mx0.32mmx 0.50µm Signal #2 Info : 30M x 0.32mm x 0.25µm





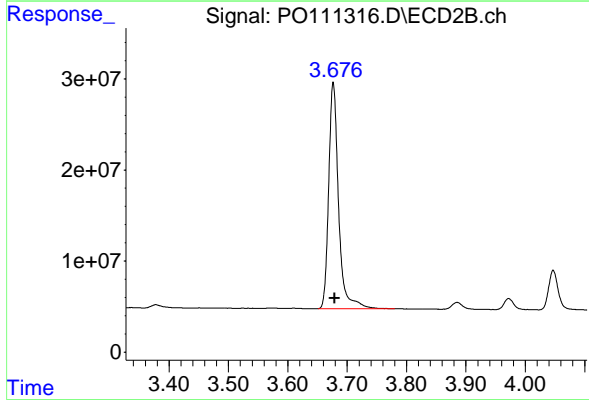
#1 Tetrachloro-m-xylene

R.T.: 3.680 min  
 Delta R.T.: -0.003 min  
 Response: 309539839  
 Conc: 52.61 ng/ml

Instrument :  
 ECD\_O  
 ClientSampleId :  
 AR1242CCC500

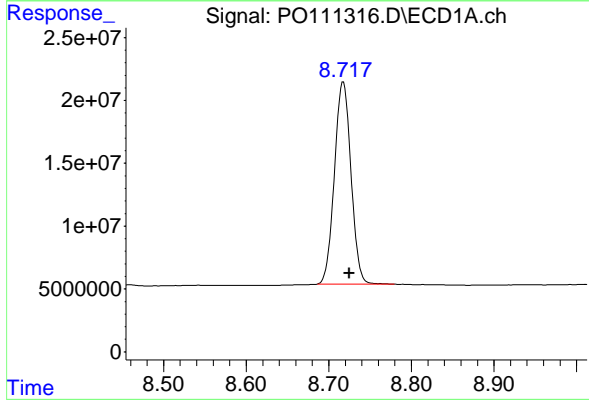
Manual Integrations  
 APPROVED

Reviewed By :Yogesh Patel 05/29/2025  
 Supervised By :mohammad ahmed 05/30/2025



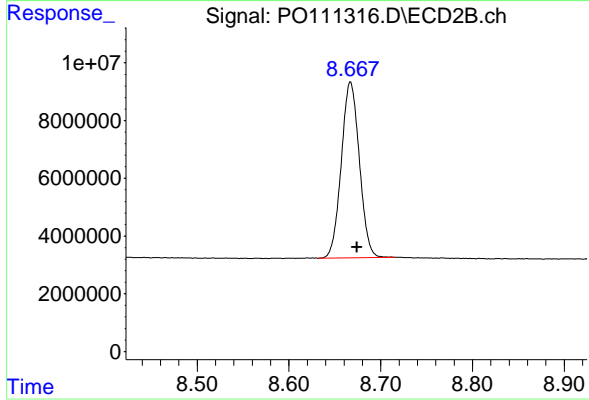
#1 Tetrachloro-m-xylene

R.T.: 3.677 min  
 Delta R.T.: -0.002 min  
 Response: 286187600  
 Conc: 52.50 ng/ml



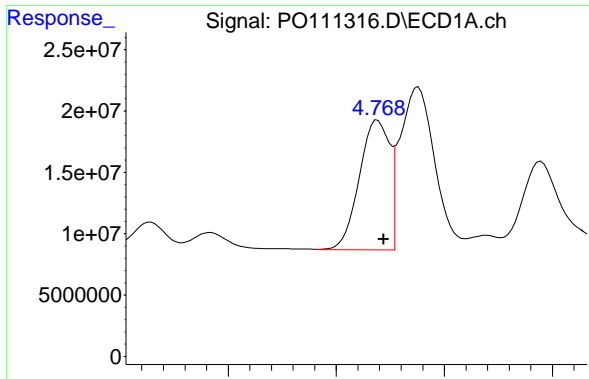
#2 Decachlorobiphenyl

R.T.: 8.718 min  
 Delta R.T.: -0.008 min  
 Response: 224636335  
 Conc: 43.51 ng/ml



#2 Decachlorobiphenyl

R.T.: 8.667 min  
 Delta R.T.: -0.008 min  
 Response: 83158541  
 Conc: 44.95 ng/ml m



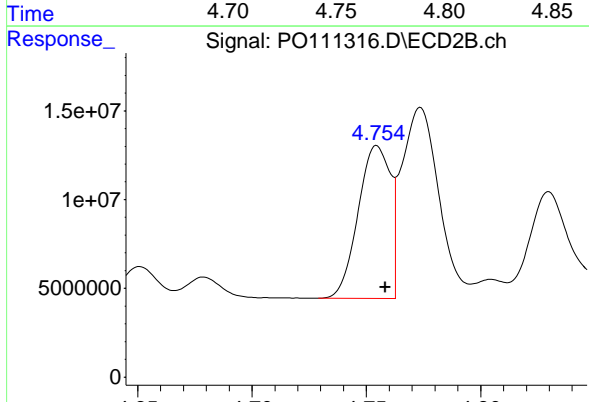
#16 AR-1242-1

R.T.: 4.769 min  
 Delta R.T.: -0.003 min  
 Response: 102935047  
 Conc: 538.36 ng/ml

Instrument :  
 ECD\_O  
 ClientSampleId :  
 AR1242CCC500

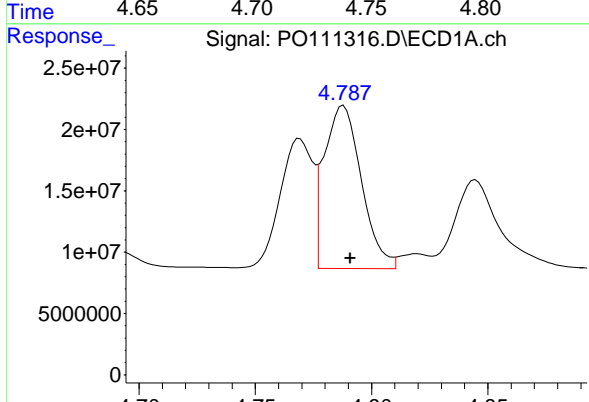
Manual Integrations  
 APPROVED

Reviewed By :Yogesh Patel 05/29/2025  
 Supervised By :mohammad ahmed 05/30/2025



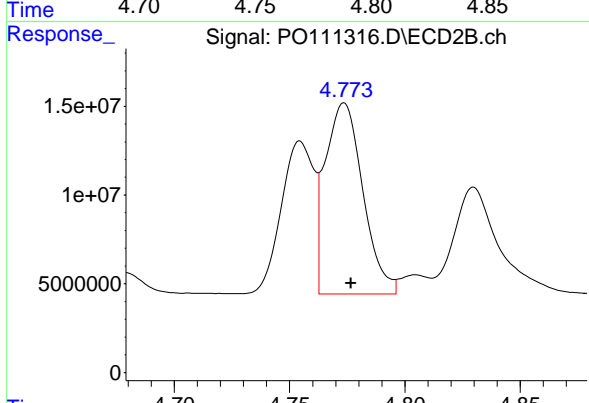
#16 AR-1242-1

R.T.: 4.755 min  
 Delta R.T.: -0.004 min  
 Response: 84238328  
 Conc: 522.87 ng/ml



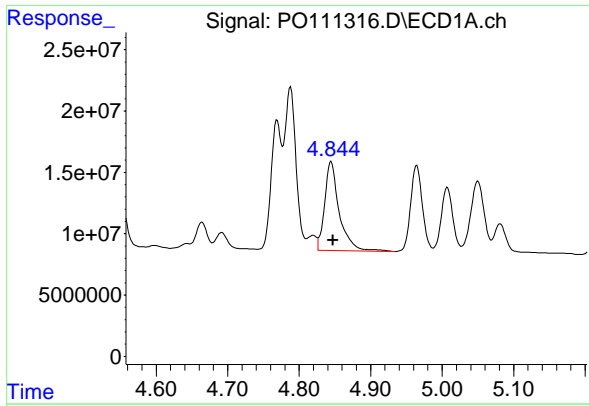
#17 AR-1242-2

R.T.: 4.788 min  
 Delta R.T.: -0.003 min  
 Response: 148309879  
 Conc: 545.23 ng/ml



#17 AR-1242-2

R.T.: 4.774 min  
 Delta R.T.: -0.003 min  
 Response: 121686461  
 Conc: 518.68 ng/ml



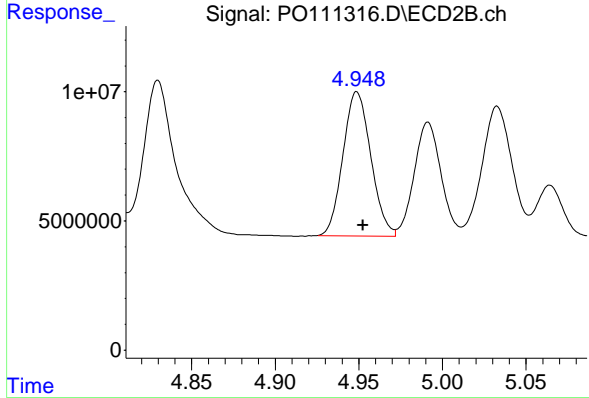
#18 AR-1242-3

R.T.: 4.845 min  
 Delta R.T.: -0.003 min  
 Response: 103487562  
 Conc: 556.42 ng/ml

Instrument :  
 ECD\_O  
 ClientSampleId :  
 AR1242CCC500

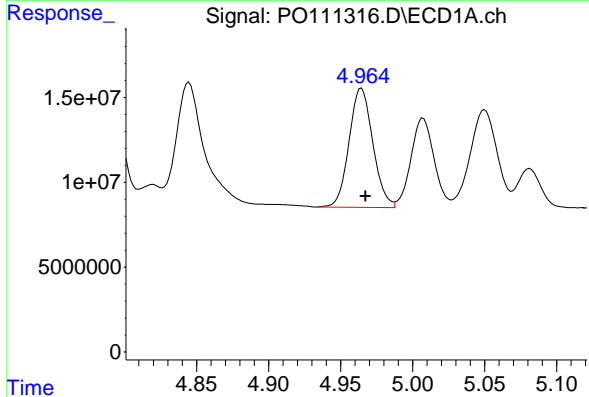
Manual Integrations  
 APPROVED

Reviewed By :Yogesh Patel 05/29/2025  
 Supervised By :mohammad ahmed 05/30/2025



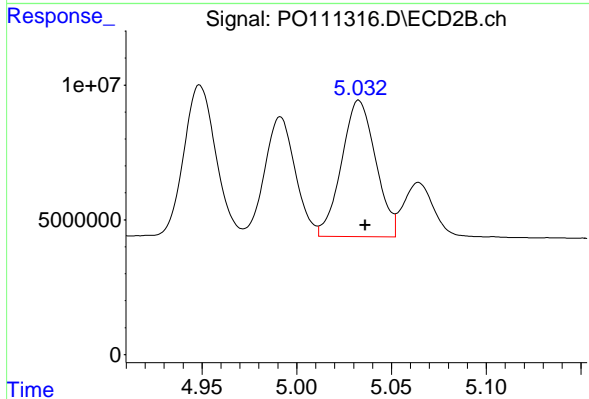
#18 AR-1242-3

R.T.: 4.949 min  
 Delta R.T.: -0.004 min  
 Response: 64757436  
 Conc: 523.85 ng/ml



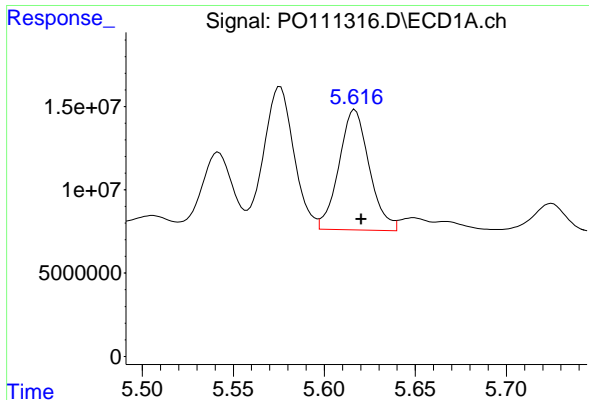
#19 AR-1242-4

R.T.: 4.964 min  
 Delta R.T.: -0.003 min  
 Response: 80480883  
 Conc: 544.52 ng/ml



#19 AR-1242-4

R.T.: 5.033 min  
 Delta R.T.: -0.003 min  
 Response: 63370410  
 Conc: 512.64 ng/ml



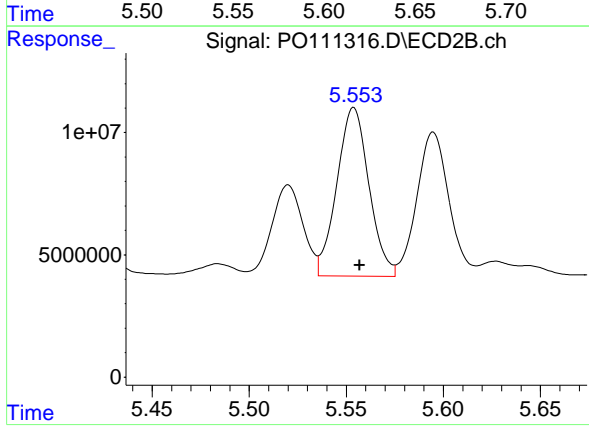
#20 AR-1242-5

R.T.: 5.617 min  
 Delta R.T.: -0.004 min  
 Response: 83998776  
 Conc: 540.04 ng/ml

Instrument :  
 ECD\_O  
 ClientSampleId :  
 AR1242CCC500

Manual Integrations  
 APPROVED

Reviewed By :Yogesh Patel 05/29/2025  
 Supervised By :mohammad ahmed 05/30/2025



#20 AR-1242-5

R.T.: 5.554 min  
 Delta R.T.: -0.003 min  
 Response: 79295764  
 Conc: 521.73 ng/ml