

Data Path : Z:\pestpcbsrv\HPCHEM1\ECD\_0\Data\P0052925\  
 Data File : PO111321.D  
 Signal(s) : Signal #1: ECD1A.ch Signal #2: ECD2B.ch  
 Acq On : 29 May 2025 09:38  
 Operator : YP/AJ  
 Sample : AR1660CCC500  
 Misc :  
 ALS Vial : 3 Sample Multiplier: 1

Instrument :  
 ECD\_0  
 ClientSampleId :  
 AR1660CCC500

Integration File signal 1: autoint1.e  
 Integration File signal 2: autoint2.e  
 Quant Time: May 29 22:41:28 2025  
 Quant Method : Z:\pestpcbsrv\HPCHEM1\ECD\_0\methods\P0051525.M  
 Quant Title : GC EXTRACTABLES  
 QLast Update : Thu May 15 07:11:53 2025  
 Response via : Initial Calibration  
 Integrator: ChemStation

Volume Inj. : 2 µl  
 Signal #1 Phase : ZB-MR1 Signal #2 Phase: ZB-MR2  
 Signal #1 Info : 30Mx0.32mmx 0.50µ Signal #2 Info : 30M x 0.32mm x 0.25µm

Compound	RT#1	RT#2	Resp#1	Resp#2	ng/ml	ng/ml
-----						
System Monitoring Compounds						
1) SA Tetrachlo...	3.680	3.677	329.3E6	304.5E6	55.981	55.853
2) SA Decachlor...	8.719	8.669	244.7E6	91003419	47.389	49.187
Target Compounds						
3) L1 AR-1016-1	4.769	4.755	132.1E6	104.8E6	586.929	548.653
4) L1 AR-1016-2	4.788	4.774	187.7E6	152.3E6	588.588	549.569
5) L1 AR-1016-3	4.845	4.949	136.6E6	80314134	629.246	549.814
6) L1 AR-1016-4	4.965	4.991	106.1E6	64367399	609.434	535.999
7) L1 AR-1016-5	5.222	5.204	101.2E6	84392906	575.254	546.585
8) L2 AR-1221-1	3.891	3.885	18359741	12597230	210.774	170.595
9) L2 AR-1221-2	3.979	3.972	23298982	16412395	365.739	301.620
10) L2 AR-1221-3	4.054	4.047	79646250	61676956	414.118	369.101
11) L3 AR-1232-1	4.054	4.047	79646250	61676956	519.973	472.277
12) L3 AR-1232-2	4.548	4.774	87771390	152.3E6	1071.082	1161.169
13) L3 AR-1232-3	4.788	4.949	187.7E6	80314134	1227.518	1179.846
14) L3 AR-1232-4	4.965	5.033	106.1E6	77899947	1290.335	1263.044
15) L3 AR-1232-5	5.007	5.204	81915016	84392906	1509.695	1283.883
16) L4 AR-1242-1	4.769	4.755	132.1E6	104.8E6	690.857	650.208
17) L4 AR-1242-2	4.788	4.774	187.7E6	152.3E6	690.112	649.170
18) L4 AR-1242-3	4.845	4.949	136.6E6	80314134	734.592	649.693
19) L4 AR-1242-4	4.965	5.033	106.1E6	77899947	718.076	630.181
20) L4 AR-1242-5	5.617	5.554	31013178	81617188	199.388	537.002 #
21) L5 AR-1248-1	4.769	4.755	132.1E6	104.8E6	862.410	807.481
22) L5 AR-1248-2	5.007	4.991	81915016	64367399	408.518	365.949
23) L5 AR-1248-3	5.222	5.033	101.2E6	77899947	395.460	415.213
24) L5 AR-1248-4	5.576	5.204	106.1E6	84392906	292.993	383.883 #
25) L5 AR-1248-5	5.617	5.594	31013178	21795258	118.346	99.829
26) L6 AR-1254-1	5.576	5.554	106.1E6	81617188	279.567	251.875
27) L6 AR-1254-2	5.726	5.702	70091779	55304119	214.495	195.252
28) L6 AR-1254-3	6.146	6.119	140.5E6	104.4E6	267.131	242.022
29) L6 AR-1254-4	6.359	6.331	22171510	14319486	65.971	57.893
30) L6 AR-1254-5	6.778	6.748	223.9E6	164.9E6	471.934	476.632
31) L7 AR-1260-1	6.261	6.234	178.6E6	135.7E6	585.654	543.173
32) L7 AR-1260-2	6.451	6.423	221.4E6	158.8E6	578.153	539.501
33) L7 AR-1260-3	6.818	6.575	188.7E6	145.7E6	541.443	508.024
34) L7 AR-1260-4	7.077	7.045	143.2E6	102.8E6	511.324	512.260
35) L7 AR-1260-5	7.320	7.287	397.5E6	232.1E6	552.103	504.957
36) L8 AR-1262-1	6.818	6.787	188.7E6	129.3E6	387.826	379.465
37) L8 AR-1262-2	7.320	7.287	397.5E6	232.1E6	491.605	461.522
38) L8 AR-1262-3	7.604	7.569	101.0E6	49711164	298.576	264.935
39) L8 AR-1262-4	7.667	7.632	288.7E6	145.6E6	488.909	440.902
40) L8 AR-1262-5	8.164	8.125	97984504	40203568	343.544	357.983
41) L9 AR-1268-1	7.604	7.569	101.0E6	49711164	104.163	93.778

Data Path : Z:\pestpcbsrv\HPCHEM1\ECD\_0\Data\P0052925\  
 Data File : P0111321.D  
 Signal(s) : Signal #1: ECD1A.ch Signal #2: ECD2B.ch  
 Acq On : 29 May 2025 09:38  
 Operator : YP/AJ  
 Sample : AR1660CCC500  
 Misc :  
 ALS Vial : 3 Sample Multiplier: 1

Instrument :  
 ECD\_0  
 ClientSampleId :  
 AR1660CCC500

Integration File signal 1: autoint1.e  
 Integration File signal 2: autoint2.e  
 Quant Time: May 29 22:41:28 2025  
 Quant Method : Z:\pestpcbsrv\HPCHEM1\ECD\_0\methods\P0051525.M  
 Quant Title : GC EXTRACTABLES  
 QLast Update : Thu May 15 07:11:53 2025  
 Response via : Initial Calibration  
 Integrator: ChemStation

Volume Inj. : 2 µl  
 Signal #1 Phase : ZB-MR1 Signal #2 Phase: ZB-MR2  
 Signal #1 Info : 30Mx0.32mmx 0.50µ Signal #2 Info : 30M x 0.32mm x 0.25µm

	Compound	RT#1	RT#2	Resp#1	Resp#2	ng/ml	ng/ml
42)	L9 AR-1268-2	7.667	7.632	288.7E6	145.6E6	323.424	301.863
43)	L9 AR-1268-3	7.875	7.838	5683445	2586508	7.490	7.423
44)	L9 AR-1268-4	8.164	8.125	97984504	40203568	300.034	315.894
45)	L9 AR-1268-5	8.460	8.415	26915600	10029607	12.470	13.323

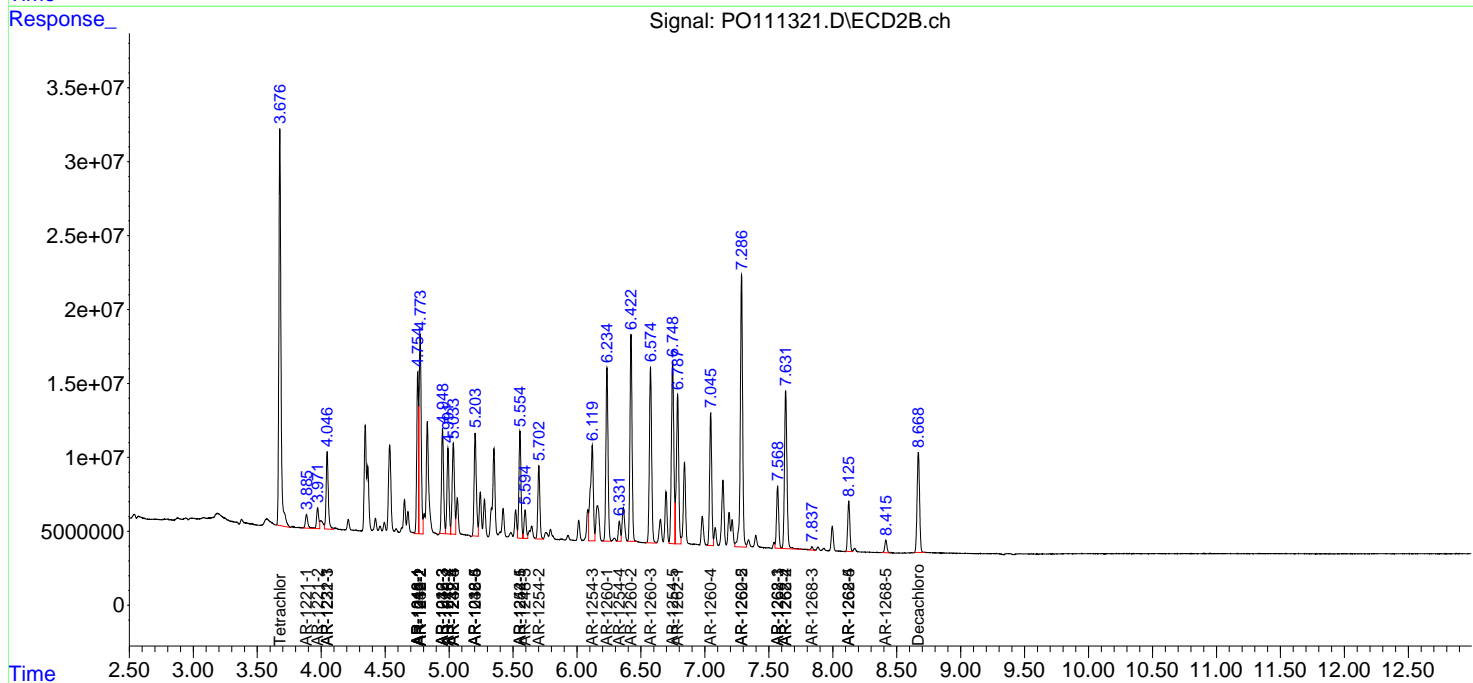
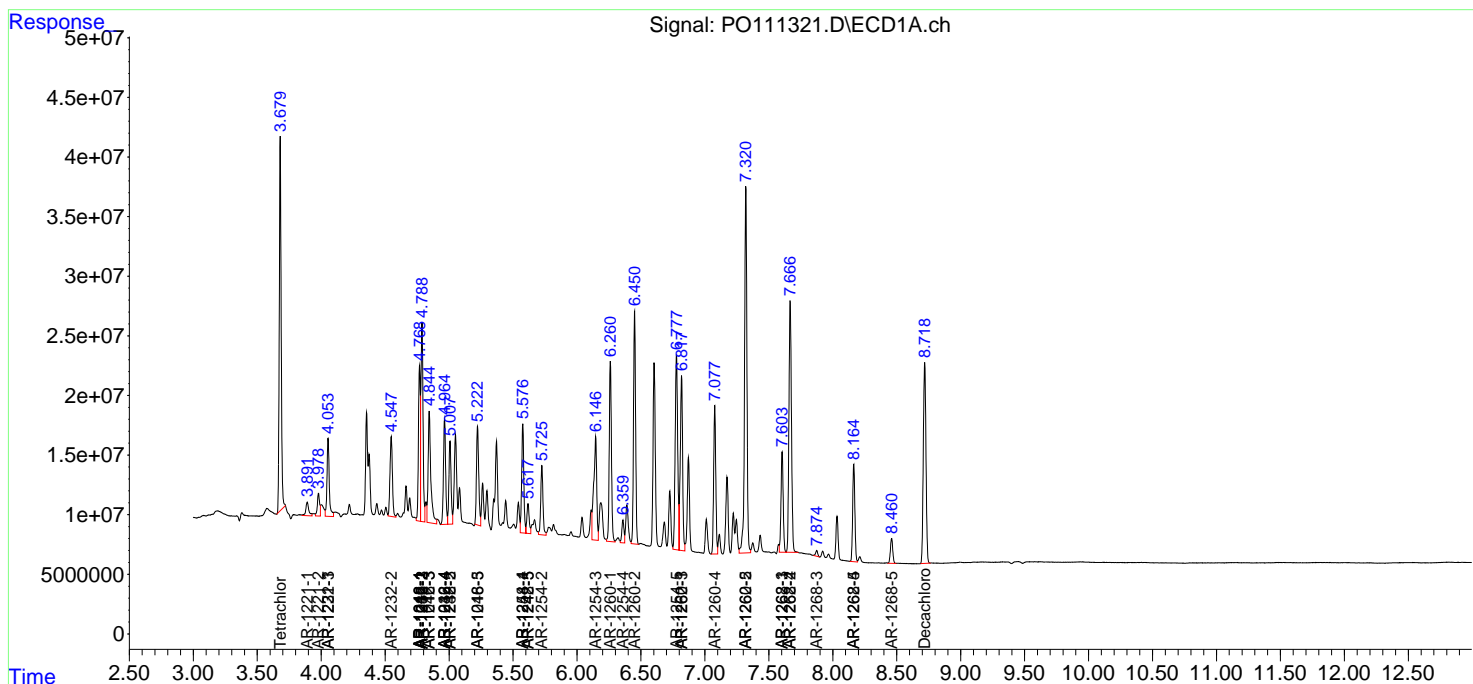
(f)=RT Delta > 1/2 Window (#)=Amounts differ by > 25% (m)=manual int.

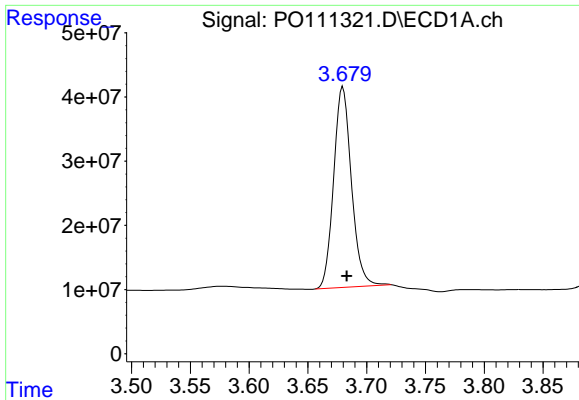
Data Path : Z:\pestpcbsrv\HPCHEM1\ECD\_O\Data\PO052925\  
 Data File : PO111321.D  
 Signal(s) : Signal #1: ECD1A.ch Signal #2: ECD2B.ch  
 Acq On : 29 May 2025 09:38  
 Operator : YP/AJ  
 Sample : AR1660CCC500  
 Misc :  
 ALS Vial : 3 Sample Multiplier: 1

Instrument :  
 ECD\_O  
 ClientSampleId :  
 AR1660CCC500

Integration File signal 1: autoint1.e  
 Integration File signal 2: autoint2.e  
 Quant Time: May 29 22:41:28 2025  
 Quant Method : Z:\pestpcbsrv\HPCHEM1\ECD\_O\methods\PO051525.M  
 Quant Title : GC EXTRACTABLES  
 QLast Update : Thu May 15 07:11:53 2025  
 Response via : Initial Calibration  
 Integrator: ChemStation

Volume Inj. : 2 µl  
 Signal #1 Phase : ZB-MR1 Signal #2 Phase: ZB-MR2  
 Signal #1 Info : 30Mx0.32mmx 0.50µ Signal #2 Info : 30M x 0.32mm x 0.25µm

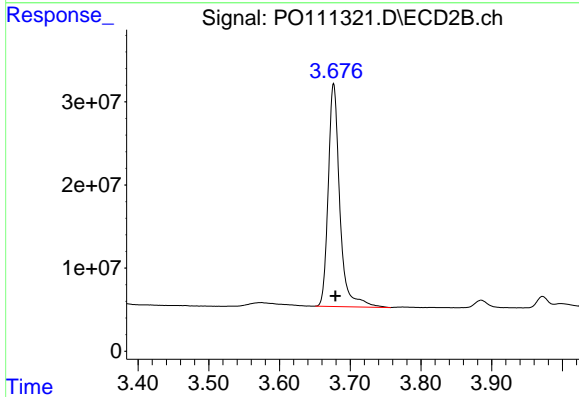




#1 Tetrachloro-m-xylene

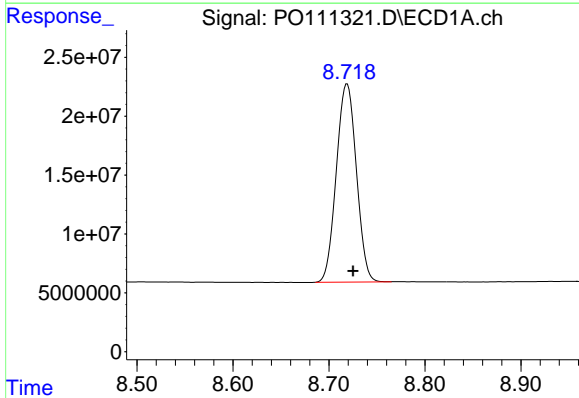
R.T.: 3.680 min  
 Delta R.T.: -0.003 min  
 Response: 329348678  
 Conc: 55.98 ng/ml

Instrument :  
 ECD\_O  
 ClientSampleId :  
 AR1660CCC500



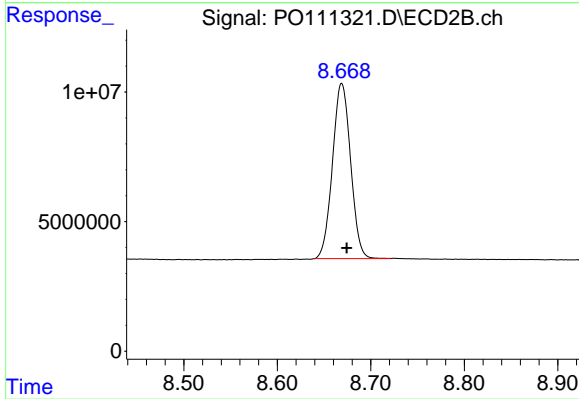
#1 Tetrachloro-m-xylene

R.T.: 3.677 min  
 Delta R.T.: -0.002 min  
 Response: 304480018  
 Conc: 55.85 ng/ml



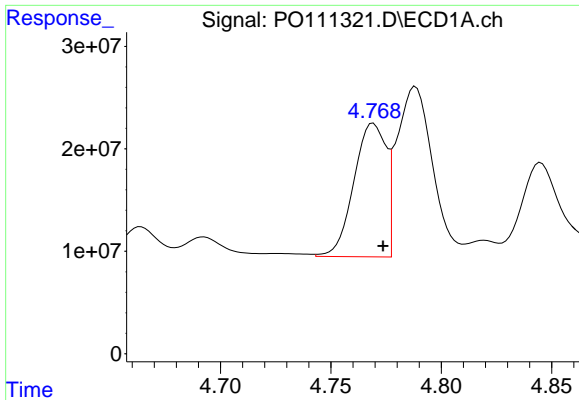
#2 Decachlorobiphenyl

R.T.: 8.719 min  
 Delta R.T.: -0.006 min  
 Response: 244665236  
 Conc: 47.39 ng/ml



#2 Decachlorobiphenyl

R.T.: 8.669 min  
 Delta R.T.: -0.005 min  
 Response: 91003419  
 Conc: 49.19 ng/ml

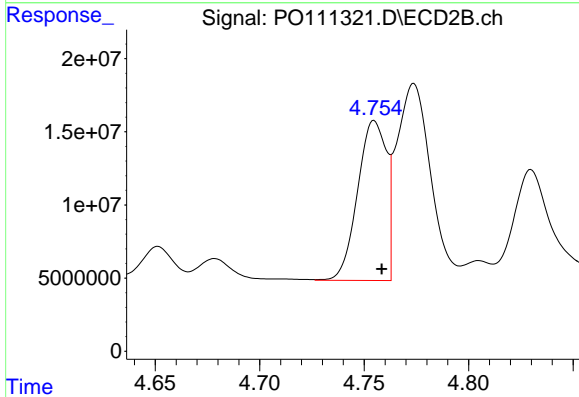


#3 AR-1016-1

R.T.: 4.769 min  
 Delta R.T.: -0.004 min  
 Response: 132091740  
 Conc: 586.93 ng/ml

Instrument :  
 ECD\_O  
 ClientSampleId :  
 AR1660CCC500

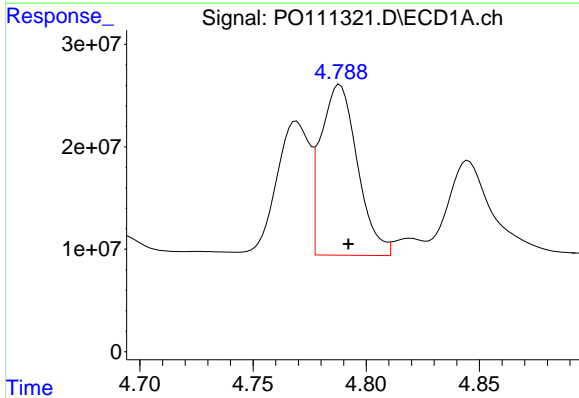
Time



#3 AR-1016-1

R.T.: 4.755 min  
 Delta R.T.: -0.004 min  
 Response: 104752909  
 Conc: 548.65 ng/ml

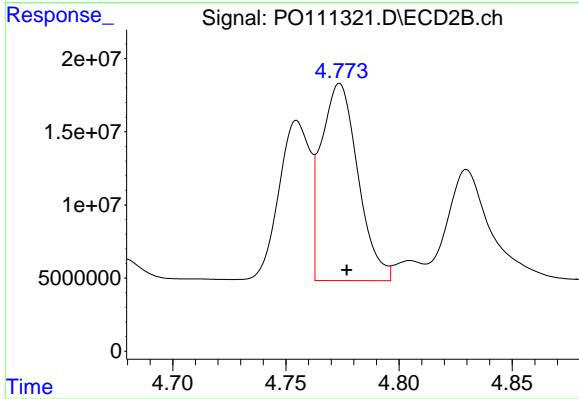
Time



#4 AR-1016-2

R.T.: 4.788 min  
 Delta R.T.: -0.004 min  
 Response: 187720497  
 Conc: 588.59 ng/ml

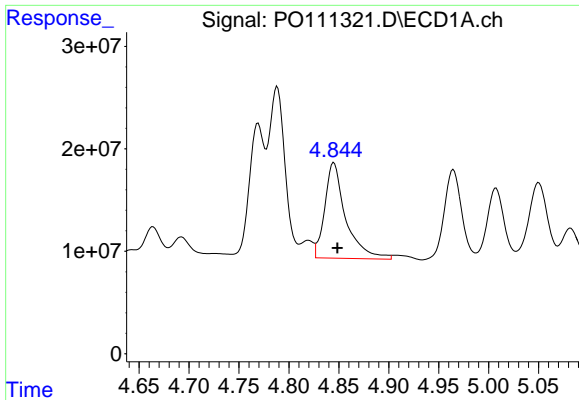
Time



#4 AR-1016-2

R.T.: 4.774 min  
 Delta R.T.: -0.003 min  
 Response: 152299330  
 Conc: 549.57 ng/ml

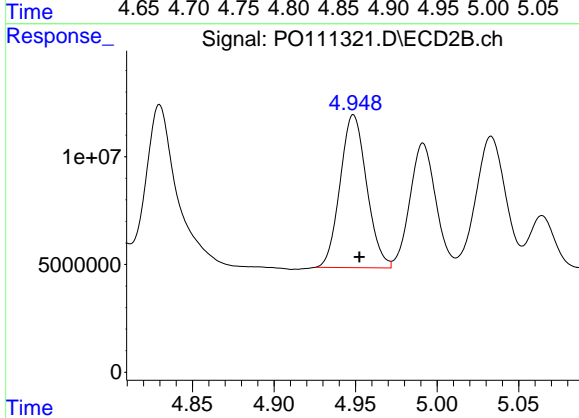
Time



#5 AR-1016-3

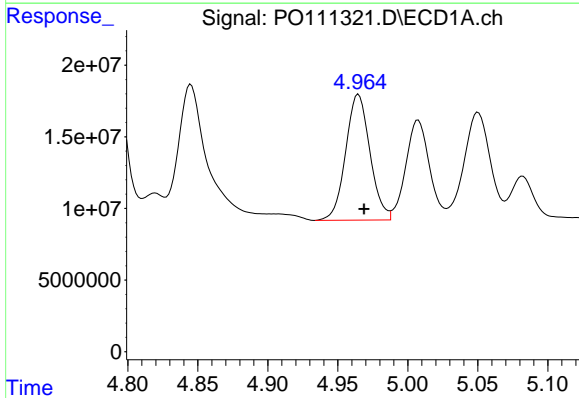
R.T.: 4.845 min  
 Delta R.T.: -0.004 min  
 Response: 136624538  
 Conc: 629.25 ng/ml

Instrument :  
 ECD\_O  
 ClientSampleId :  
 AR1660CCC500



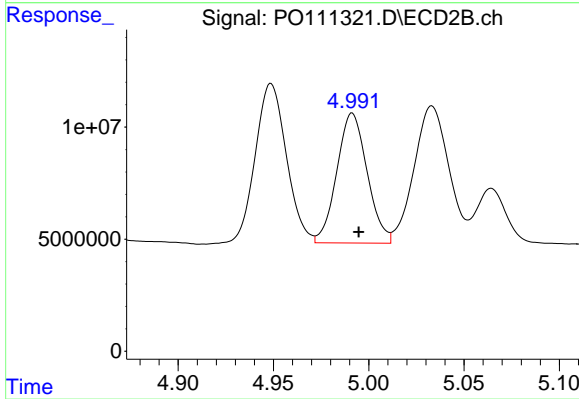
#5 AR-1016-3

R.T.: 4.949 min  
 Delta R.T.: -0.004 min  
 Response: 80314134  
 Conc: 549.81 ng/ml



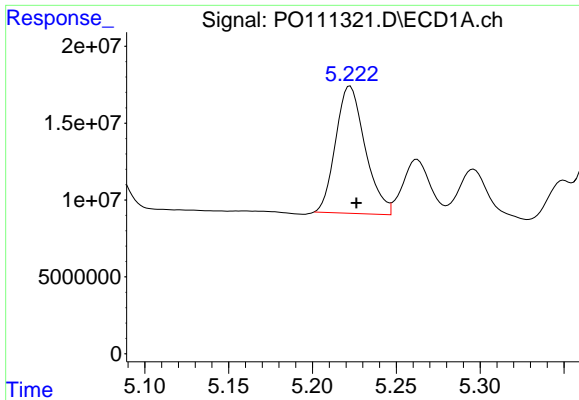
#6 AR-1016-4

R.T.: 4.965 min  
 Delta R.T.: -0.004 min  
 Response: 106131845  
 Conc: 609.43 ng/ml



#6 AR-1016-4

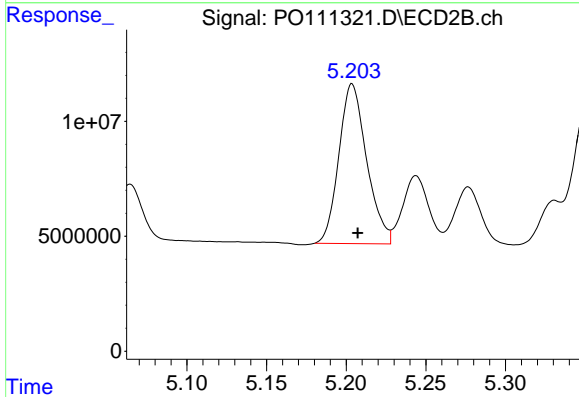
R.T.: 4.991 min  
 Delta R.T.: -0.003 min  
 Response: 64367399  
 Conc: 536.00 ng/ml



#7 AR-1016-5

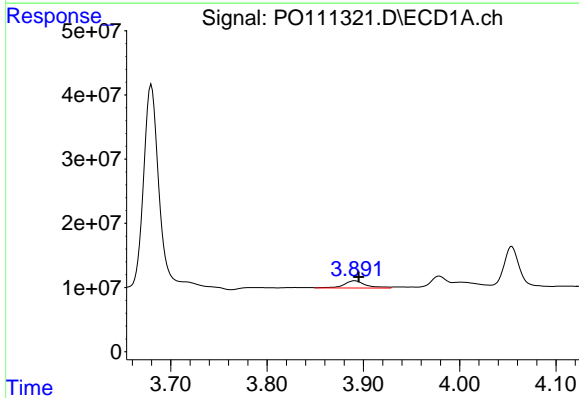
R.T.: 5.222 min  
Delta R.T.: -0.004 min  
Response: 101239790  
Conc: 575.25 ng/ml

Instrument :  
ECD\_O  
ClientSampleId :  
AR1660CCC500



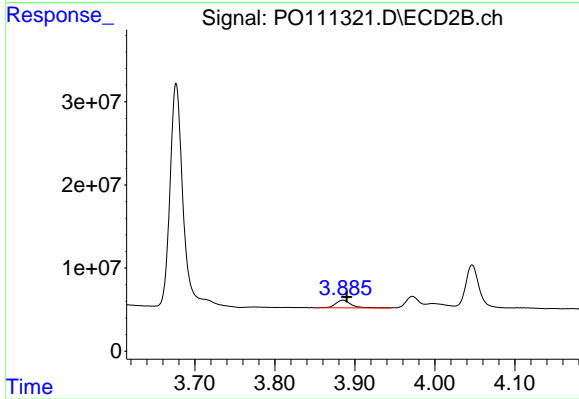
#7 AR-1016-5

R.T.: 5.204 min  
Delta R.T.: -0.004 min  
Response: 84392906  
Conc: 546.58 ng/ml



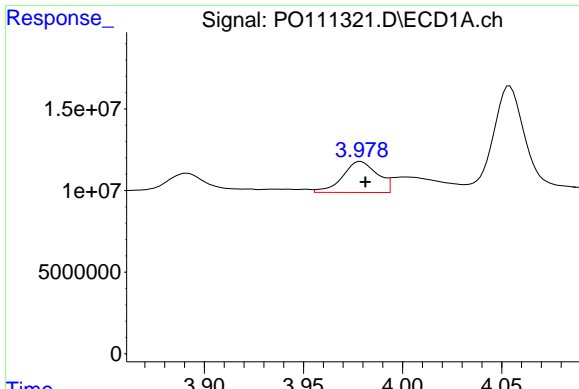
#8 AR-1221-1

R.T.: 3.891 min  
Delta R.T.: -0.004 min  
Response: 18359741  
Conc: 210.77 ng/ml



#8 AR-1221-1

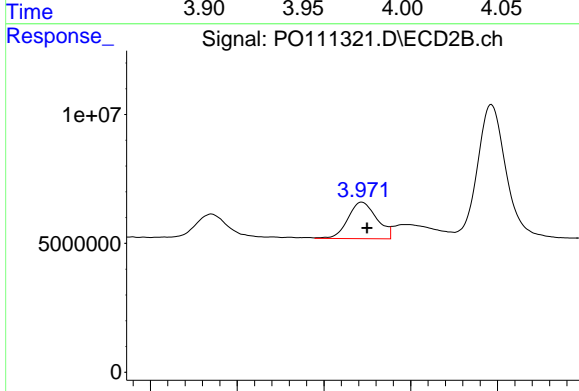
R.T.: 3.885 min  
Delta R.T.: -0.005 min  
Response: 12597230  
Conc: 170.59 ng/ml



#9 AR-1221-2

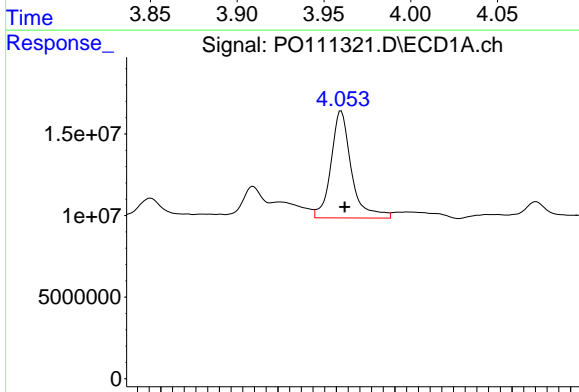
R.T.: 3.979 min  
 Delta R.T.: -0.002 min  
 Response: 23298982  
 Conc: 365.74 ng/ml

Instrument :  
 ECD\_O  
 ClientSampleId :  
 AR1660CCC500



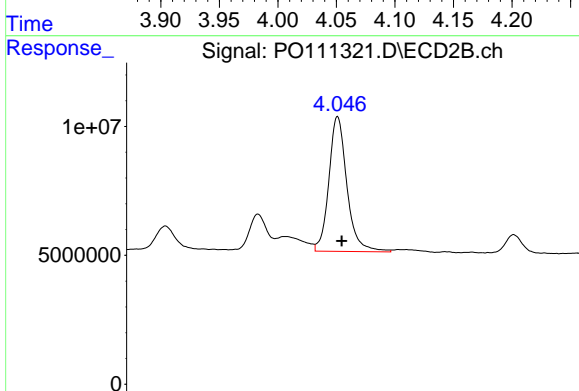
#9 AR-1221-2

R.T.: 3.972 min  
 Delta R.T.: -0.003 min  
 Response: 16412395  
 Conc: 301.62 ng/ml



#10 AR-1221-3

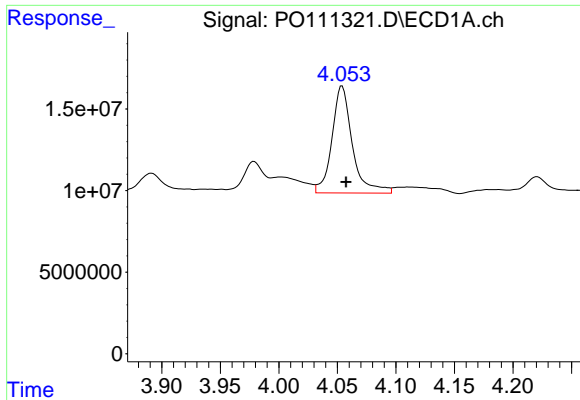
R.T.: 4.054 min  
 Delta R.T.: -0.003 min  
 Response: 79646250  
 Conc: 414.12 ng/ml



#10 AR-1221-3

R.T.: 4.047 min  
 Delta R.T.: -0.004 min  
 Response: 61676956  
 Conc: 369.10 ng/ml

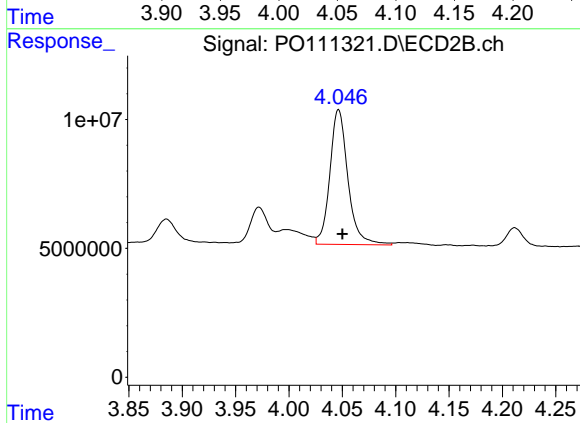




#11 AR-1232-1

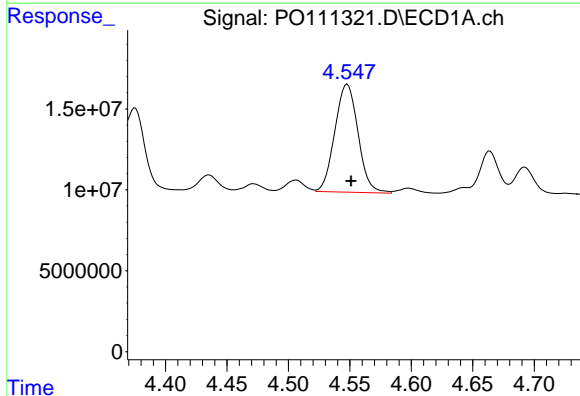
R.T.: 4.054 min  
 Delta R.T.: -0.003 min  
 Response: 79646250  
 Conc: 519.97 ng/ml

Instrument :  
 ECD\_O  
 ClientSampleId :  
 AR1660CCC500



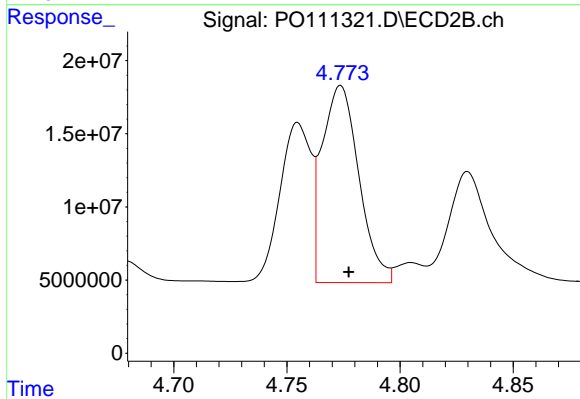
#11 AR-1232-1

R.T.: 4.047 min  
 Delta R.T.: -0.003 min  
 Response: 61676956  
 Conc: 472.28 ng/ml



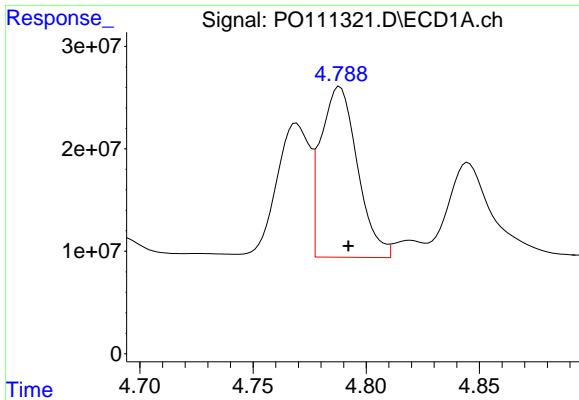
#12 AR-1232-2

R.T.: 4.548 min  
 Delta R.T.: -0.003 min  
 Response: 87771390  
 Conc: 1071.08 ng/ml



#12 AR-1232-2

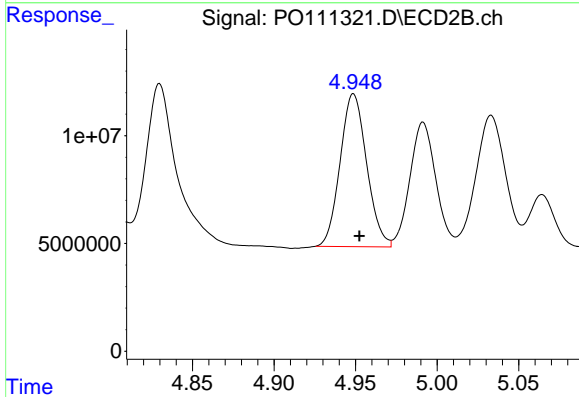
R.T.: 4.774 min  
 Delta R.T.: -0.003 min  
 Response: 152299330  
 Conc: 1161.17 ng/ml



#13 AR-1232-3

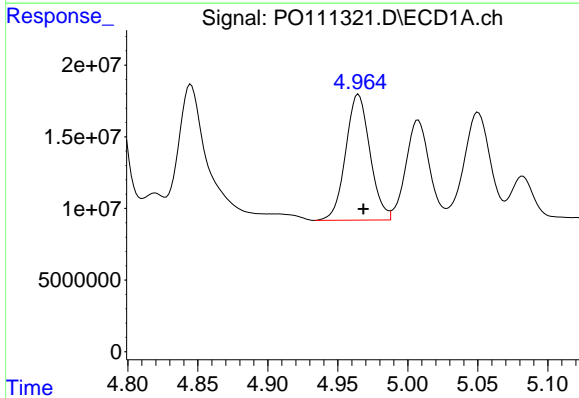
R.T.: 4.788 min  
 Delta R.T.: -0.004 min  
 Response: 187720497  
 Conc: 1227.52 ng/ml

Instrument :  
 ECD\_O  
 ClientSampleId :  
 AR1660CCC500



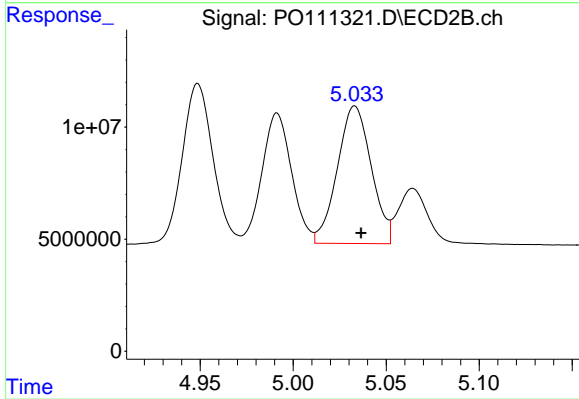
#13 AR-1232-3

R.T.: 4.949 min  
 Delta R.T.: -0.004 min  
 Response: 80314134  
 Conc: 1179.85 ng/ml



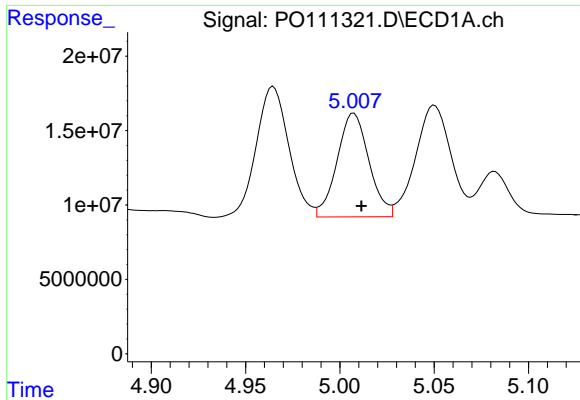
#14 AR-1232-4

R.T.: 4.965 min  
 Delta R.T.: -0.004 min  
 Response: 106131845  
 Conc: 1290.33 ng/ml



#14 AR-1232-4

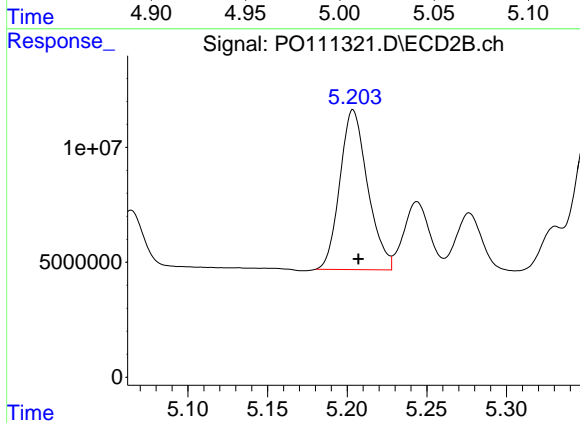
R.T.: 5.033 min  
 Delta R.T.: -0.003 min  
 Response: 77899947  
 Conc: 1263.04 ng/ml



#15 AR-1232-5

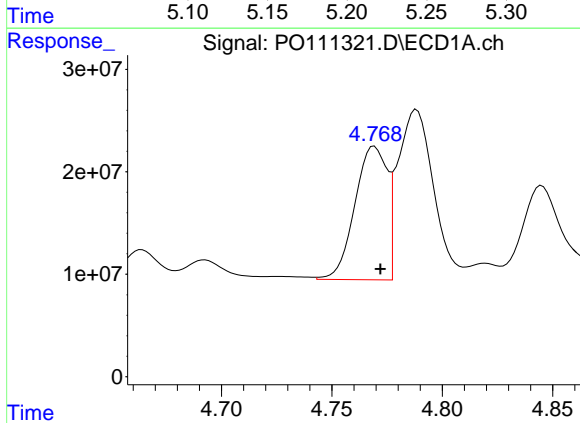
R.T.: 5.007 min  
 Delta R.T.: -0.004 min  
 Response: 81915016  
 Conc: 1509.70 ng/ml

Instrument :  
 ECD\_O  
 ClientSampleId :  
 AR1660CCC500



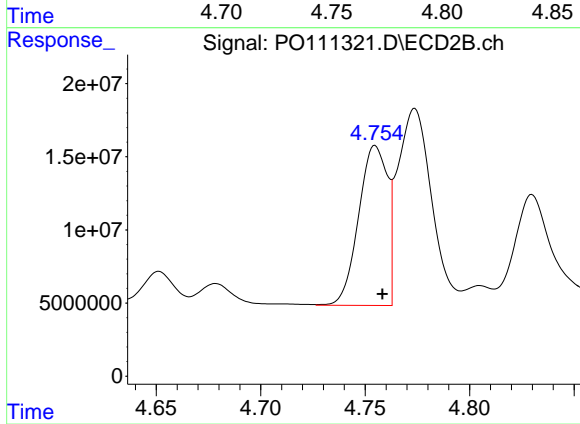
#15 AR-1232-5

R.T.: 5.204 min  
 Delta R.T.: -0.003 min  
 Response: 84392906  
 Conc: 1283.88 ng/ml



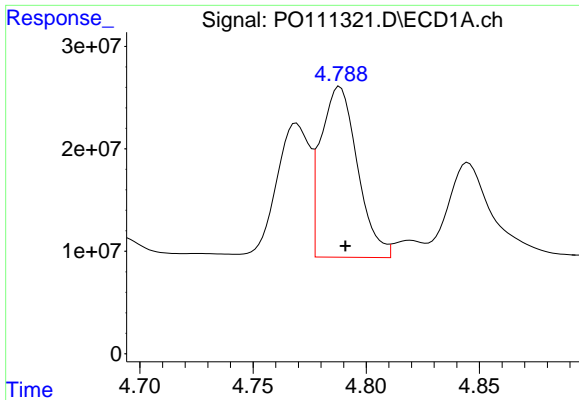
#16 AR-1242-1

R.T.: 4.769 min  
 Delta R.T.: -0.003 min  
 Response: 132091740  
 Conc: 690.86 ng/ml



#16 AR-1242-1

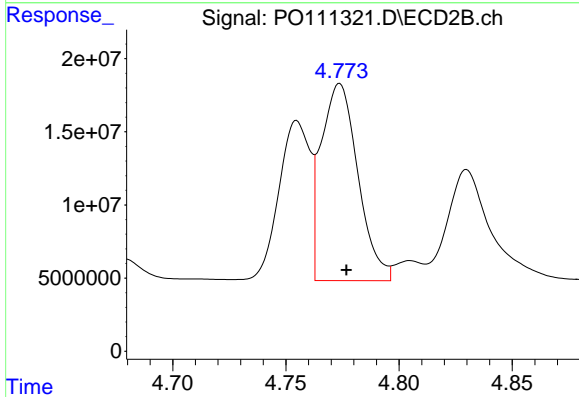
R.T.: 4.755 min  
 Delta R.T.: -0.003 min  
 Response: 104752909  
 Conc: 650.21 ng/ml



#17 AR-1242-2

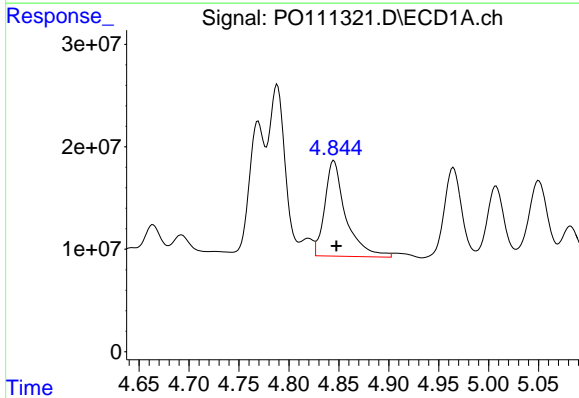
R.T.: 4.788 min  
 Delta R.T.: -0.003 min  
 Response: 187720497  
 Conc: 690.11 ng/ml

Instrument :  
 ECD\_O  
 ClientSampleId :  
 AR1660CCC500



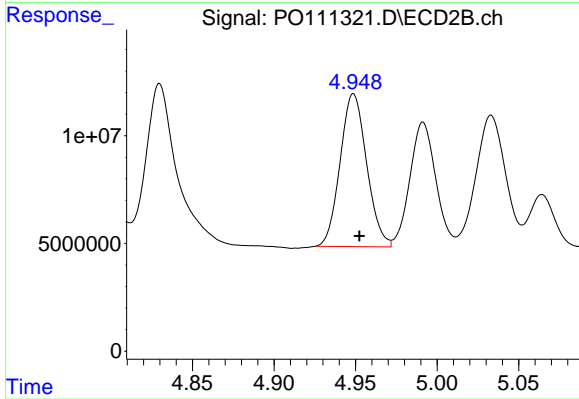
#17 AR-1242-2

R.T.: 4.774 min  
 Delta R.T.: -0.003 min  
 Response: 152299330  
 Conc: 649.17 ng/ml



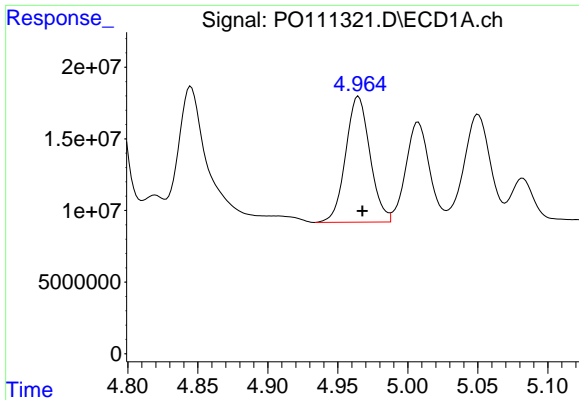
#18 AR-1242-3

R.T.: 4.845 min  
 Delta R.T.: -0.003 min  
 Response: 136624538  
 Conc: 734.59 ng/ml



#18 AR-1242-3

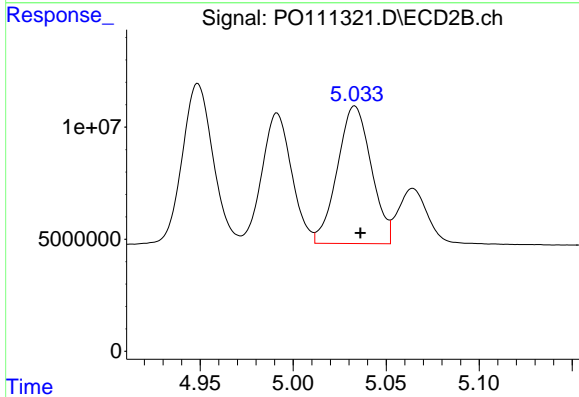
R.T.: 4.949 min  
 Delta R.T.: -0.004 min  
 Response: 80314134  
 Conc: 649.69 ng/ml



#19 AR-1242-4

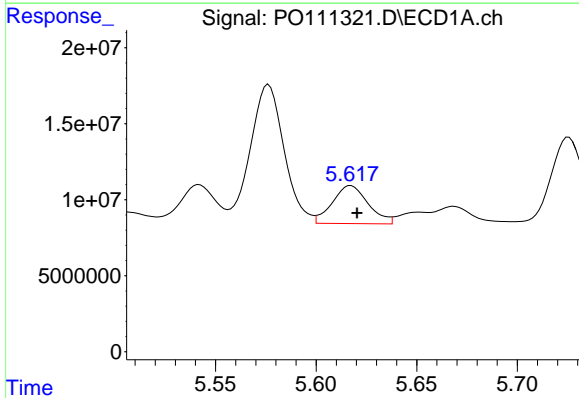
R.T.: 4.965 min  
 Delta R.T.: -0.003 min  
 Response: 106131845  
 Conc: 718.08 ng/ml

Instrument :  
 ECD\_O  
 ClientSampleId :  
 AR1660CCC500



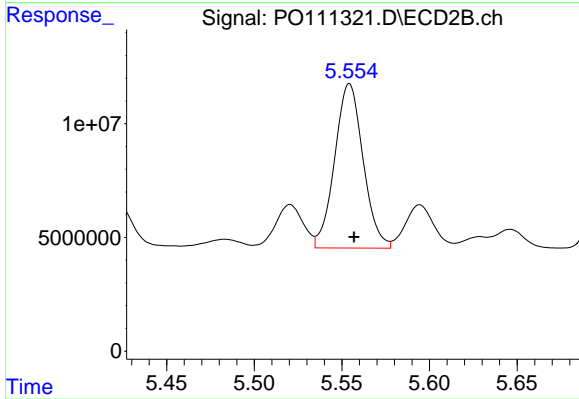
#19 AR-1242-4

R.T.: 5.033 min  
 Delta R.T.: -0.003 min  
 Response: 77899947  
 Conc: 630.18 ng/ml



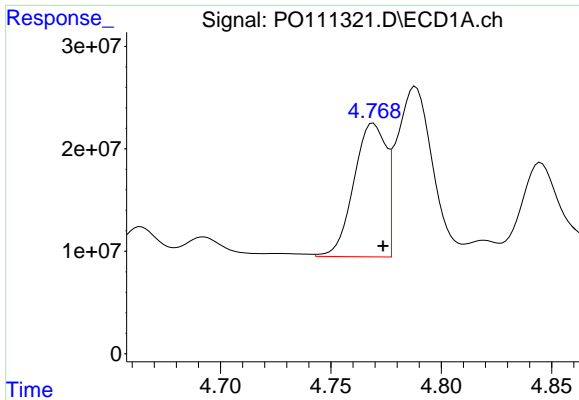
#20 AR-1242-5

R.T.: 5.617 min  
 Delta R.T.: -0.003 min  
 Response: 31013178  
 Conc: 199.39 ng/ml



#20 AR-1242-5

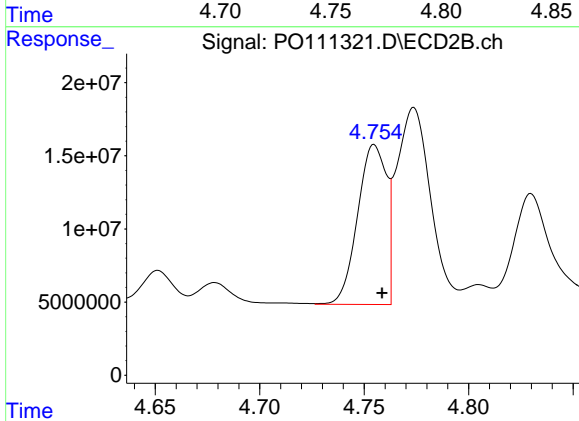
R.T.: 5.554 min  
 Delta R.T.: -0.003 min  
 Response: 81617188  
 Conc: 537.00 ng/ml



#21 AR-1248-1

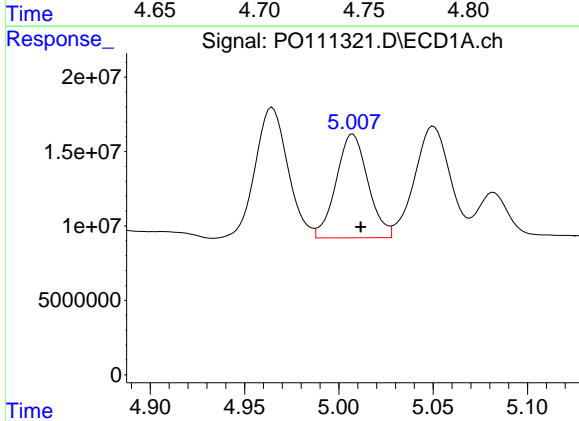
R.T.: 4.769 min  
 Delta R.T.: -0.004 min  
 Response: 132091740  
 Conc: 862.41 ng/ml

Instrument :  
 ECD\_O  
 ClientSampleId :  
 AR1660CCC500



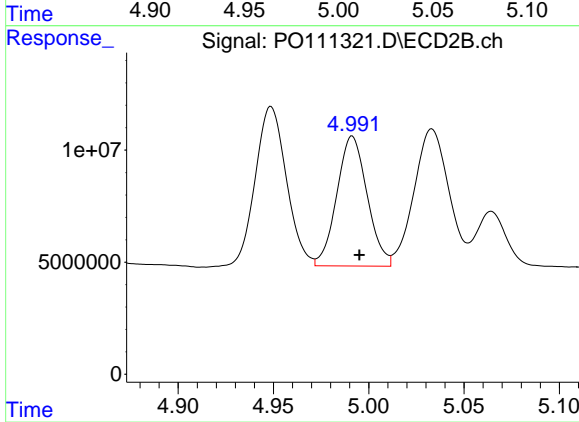
#21 AR-1248-1

R.T.: 4.755 min  
 Delta R.T.: -0.004 min  
 Response: 104752909  
 Conc: 807.48 ng/ml



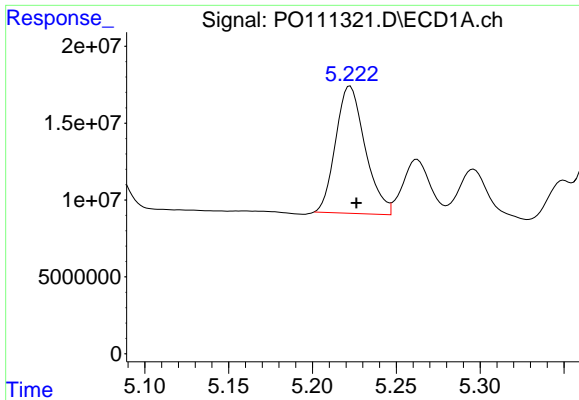
#22 AR-1248-2

R.T.: 5.007 min  
 Delta R.T.: -0.004 min  
 Response: 81915016  
 Conc: 408.52 ng/ml



#22 AR-1248-2

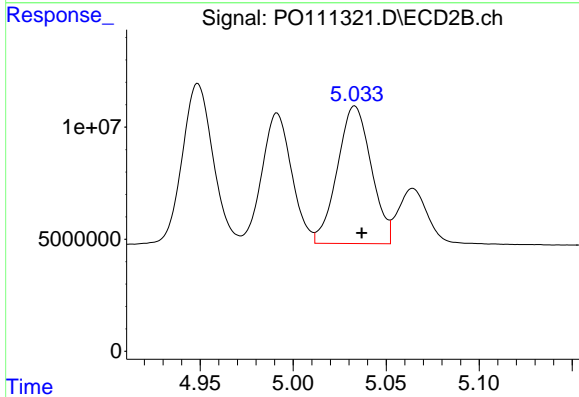
R.T.: 4.991 min  
 Delta R.T.: -0.004 min  
 Response: 64367399  
 Conc: 365.95 ng/ml



#23 AR-1248-3

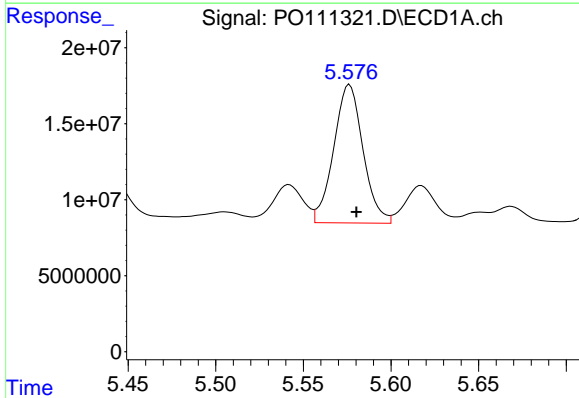
R.T.: 5.222 min  
 Delta R.T.: -0.004 min  
 Response: 101239790  
 Conc: 395.46 ng/ml

Instrument :  
 ECD\_O  
 ClientSampleId :  
 AR1660CCC500



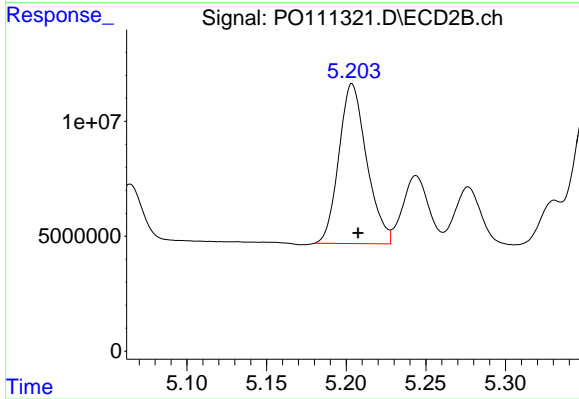
#23 AR-1248-3

R.T.: 5.033 min  
 Delta R.T.: -0.004 min  
 Response: 77899947  
 Conc: 415.21 ng/ml



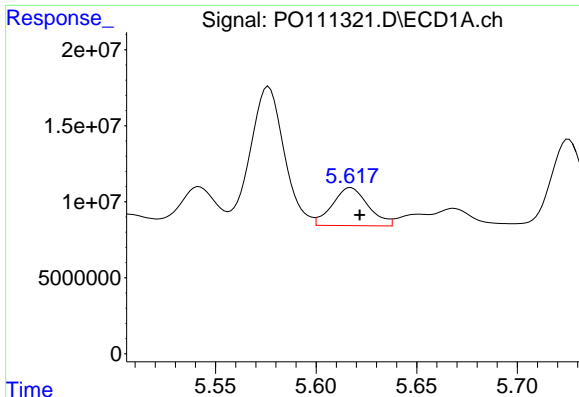
#24 AR-1248-4

R.T.: 5.576 min  
 Delta R.T.: -0.004 min  
 Response: 106116644  
 Conc: 292.99 ng/ml



#24 AR-1248-4

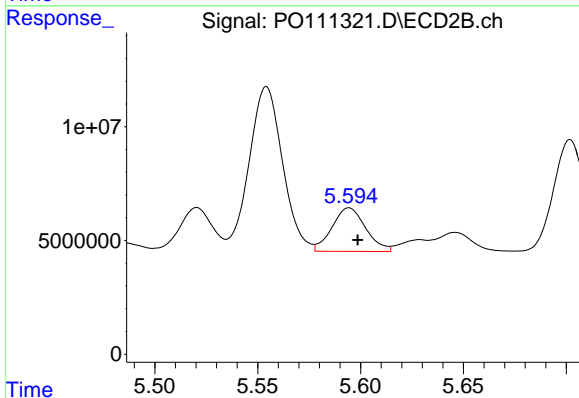
R.T.: 5.204 min  
 Delta R.T.: -0.004 min  
 Response: 84392906  
 Conc: 383.88 ng/ml



#25 AR-1248-5

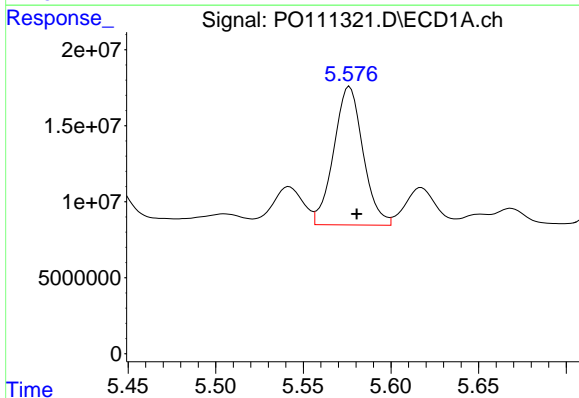
R.T.: 5.617 min  
 Delta R.T.: -0.004 min  
 Response: 31013178  
 Conc: 118.35 ng/ml

Instrument :  
 ECD\_O  
 ClientSampleId :  
 AR1660CCC500



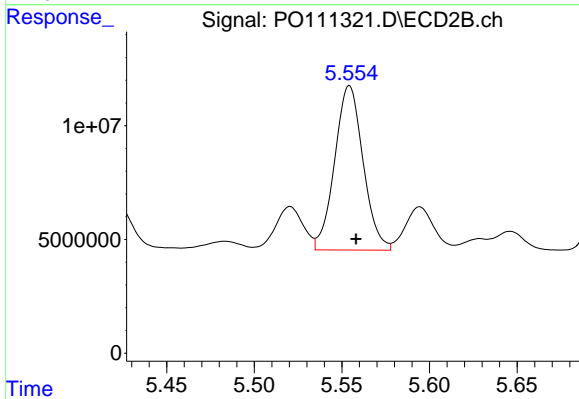
#25 AR-1248-5

R.T.: 5.594 min  
 Delta R.T.: -0.004 min  
 Response: 21795258  
 Conc: 99.83 ng/ml



#26 AR-1254-1

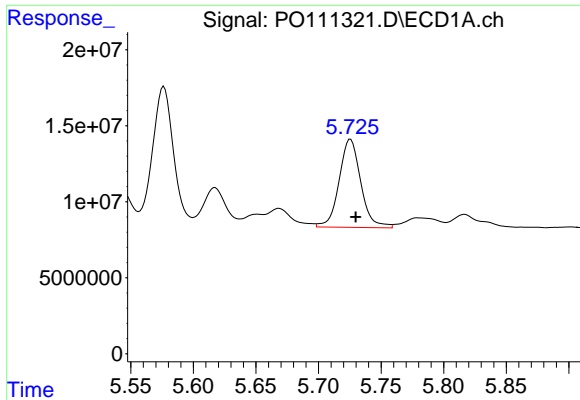
R.T.: 5.576 min  
 Delta R.T.: -0.004 min  
 Response: 106116644  
 Conc: 279.57 ng/ml



#26 AR-1254-1

R.T.: 5.554 min  
 Delta R.T.: -0.004 min  
 Response: 81617188  
 Conc: 251.87 ng/ml

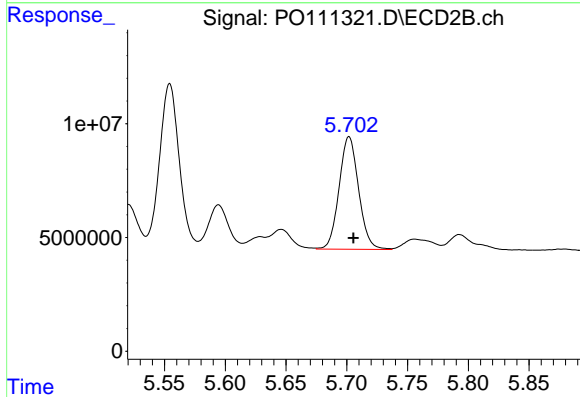




#27 AR-1254-2

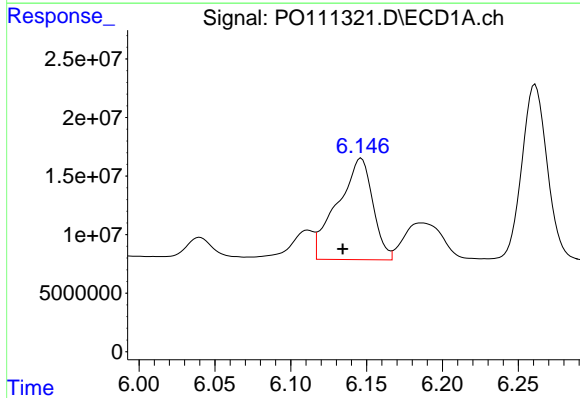
R.T.: 5.726 min  
 Delta R.T.: -0.004 min  
 Response: 70091779  
 Conc: 214.50 ng/ml

Instrument :  
 ECD\_O  
 ClientSampleId :  
 AR1660CCC500



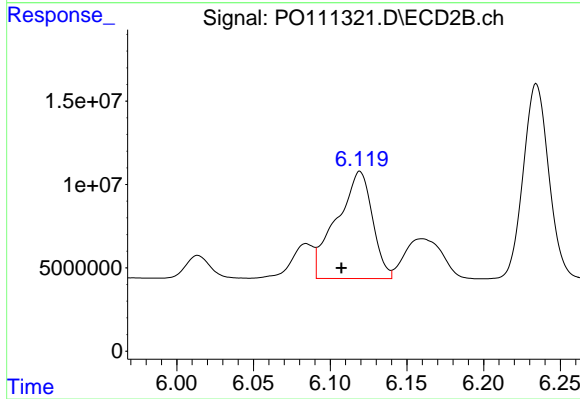
#27 AR-1254-2

R.T.: 5.702 min  
 Delta R.T.: -0.004 min  
 Response: 55304119  
 Conc: 195.25 ng/ml



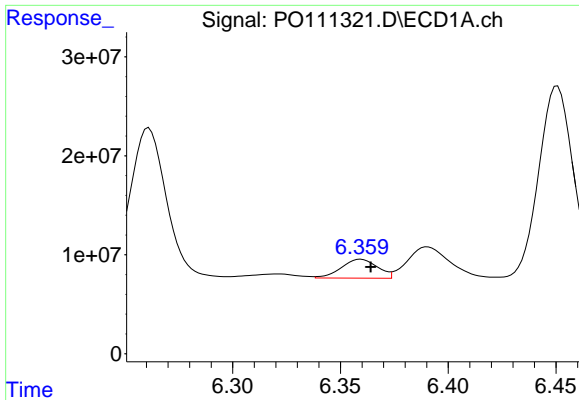
#28 AR-1254-3

R.T.: 6.146 min  
 Delta R.T.: 0.012 min  
 Response: 140548938  
 Conc: 267.13 ng/ml



#28 AR-1254-3

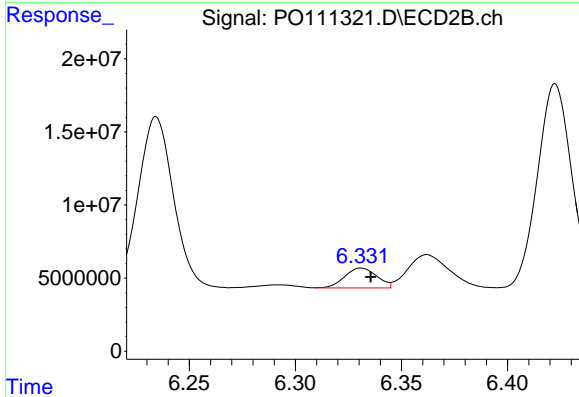
R.T.: 6.119 min  
 Delta R.T.: 0.012 min  
 Response: 104421102  
 Conc: 242.02 ng/ml



#29 AR-1254-4

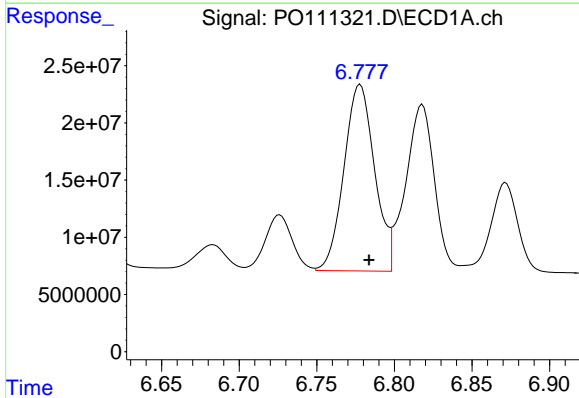
R.T.: 6.359 min  
 Delta R.T.: -0.005 min  
 Response: 22171510  
 Conc: 65.97 ng/ml

Instrument :  
 ECD\_O  
 ClientSampleId :  
 AR1660CCC500



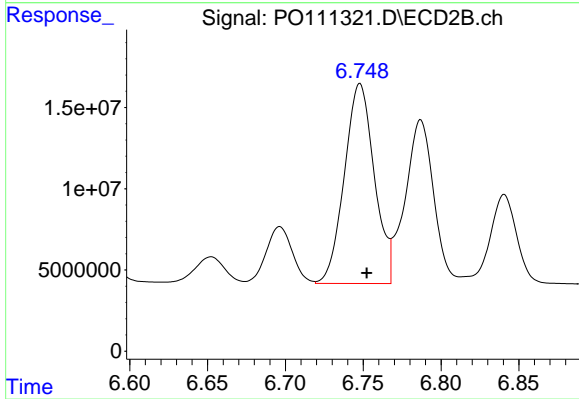
#29 AR-1254-4

R.T.: 6.331 min  
 Delta R.T.: -0.005 min  
 Response: 14319486  
 Conc: 57.89 ng/ml



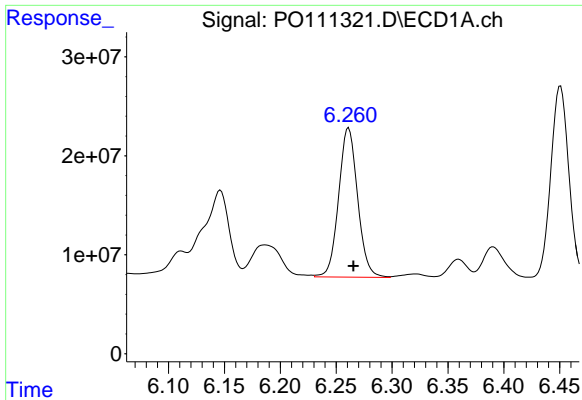
#30 AR-1254-5

R.T.: 6.778 min  
 Delta R.T.: -0.006 min  
 Response: 223911240  
 Conc: 471.93 ng/ml



#30 AR-1254-5

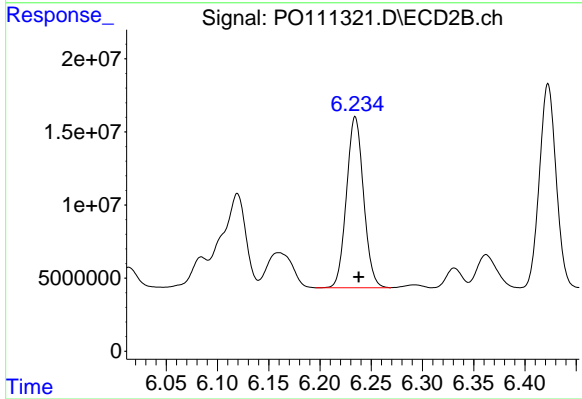
R.T.: 6.748 min  
 Delta R.T.: -0.004 min  
 Response: 164886302  
 Conc: 476.63 ng/ml



#31 AR-1260-1

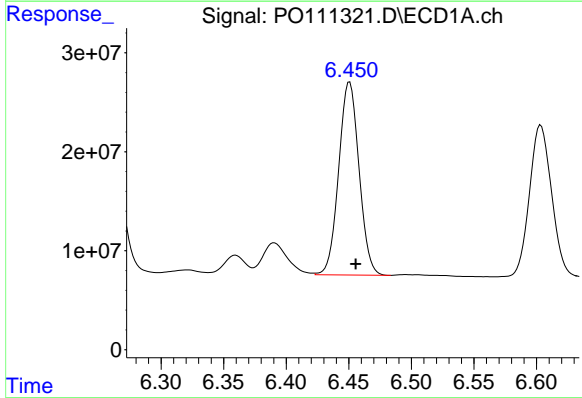
R.T.: 6.261 min  
 Delta R.T.: -0.004 min  
 Response: 178605784  
 Conc: 585.65 ng/ml

Instrument :  
 ECD\_O  
 ClientSampleId :  
 AR1660CCC500



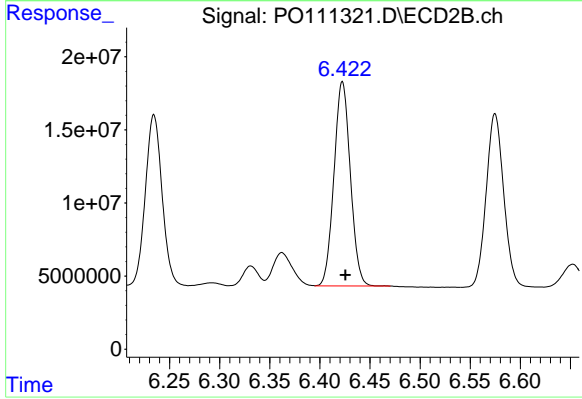
#31 AR-1260-1

R.T.: 6.234 min  
 Delta R.T.: -0.003 min  
 Response: 135732702  
 Conc: 543.17 ng/ml



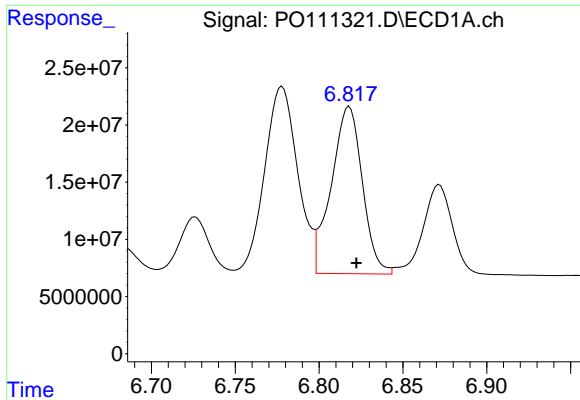
#32 AR-1260-2

R.T.: 6.451 min  
 Delta R.T.: -0.005 min  
 Response: 221403829  
 Conc: 578.15 ng/ml



#32 AR-1260-2

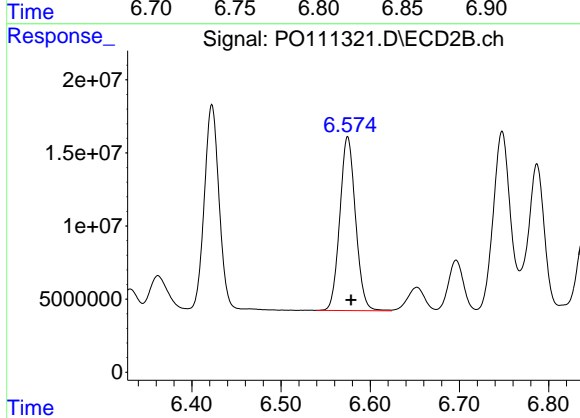
R.T.: 6.423 min  
 Delta R.T.: -0.003 min  
 Response: 158768547  
 Conc: 539.50 ng/ml



#33 AR-1260-3

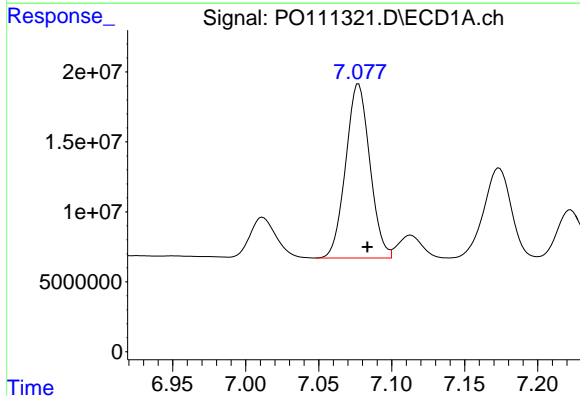
R.T.: 6.818 min  
 Delta R.T.: -0.004 min  
 Response: 188740817  
 Conc: 541.44 ng/ml

Instrument :  
 ECD\_O  
 ClientSampleId :  
 AR1660CCC500



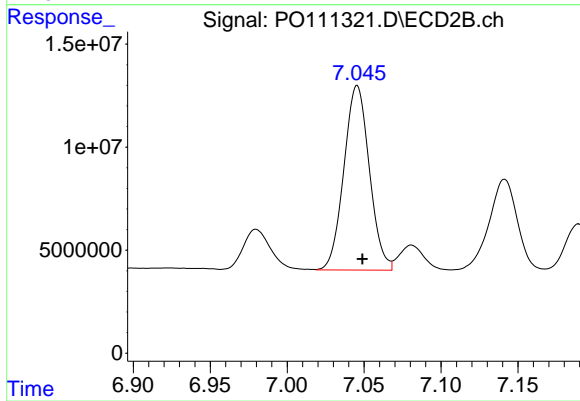
#33 AR-1260-3

R.T.: 6.575 min  
 Delta R.T.: -0.004 min  
 Response: 145659989  
 Conc: 508.02 ng/ml



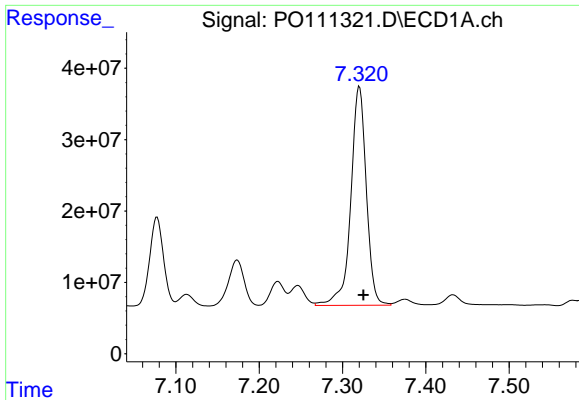
#34 AR-1260-4

R.T.: 7.077 min  
 Delta R.T.: -0.006 min  
 Response: 143151125  
 Conc: 511.32 ng/ml



#34 AR-1260-4

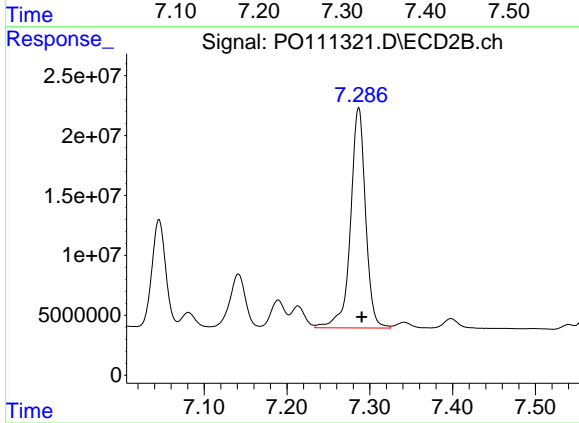
R.T.: 7.045 min  
 Delta R.T.: -0.003 min  
 Response: 102842951  
 Conc: 512.26 ng/ml



#35 AR-1260-5

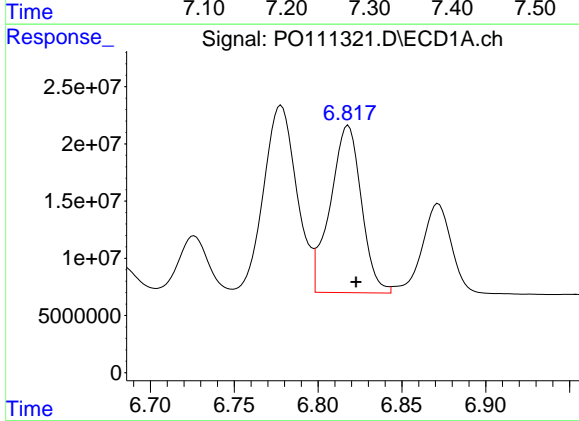
R.T.: 7.320 min  
 Delta R.T.: -0.005 min  
 Response: 397459393  
 Conc: 552.10 ng/ml

Instrument :  
 ECD\_O  
 ClientSampleId :  
 AR1660CCC500



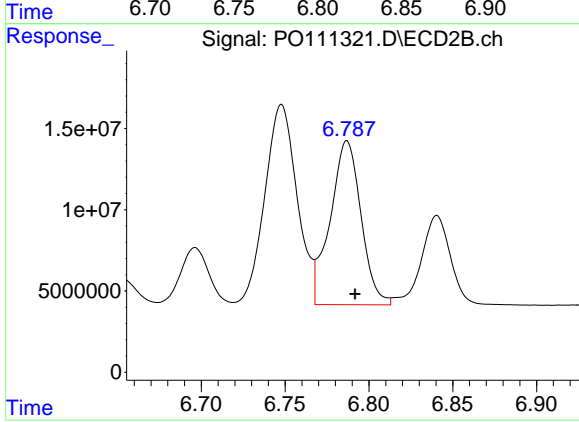
#35 AR-1260-5

R.T.: 7.287 min  
 Delta R.T.: -0.004 min  
 Response: 232081964  
 Conc: 504.96 ng/ml



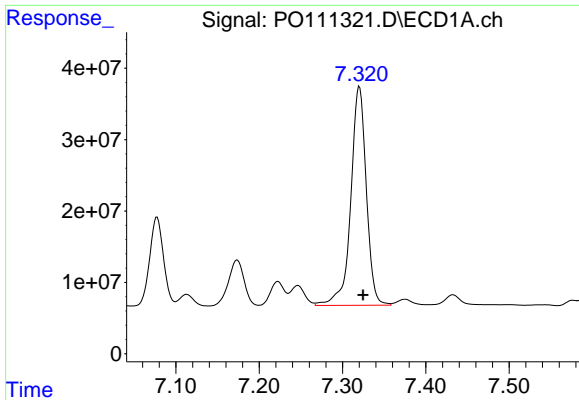
#36 AR-1262-1

R.T.: 6.818 min  
 Delta R.T.: -0.005 min  
 Response: 188740817  
 Conc: 387.83 ng/ml



#36 AR-1262-1

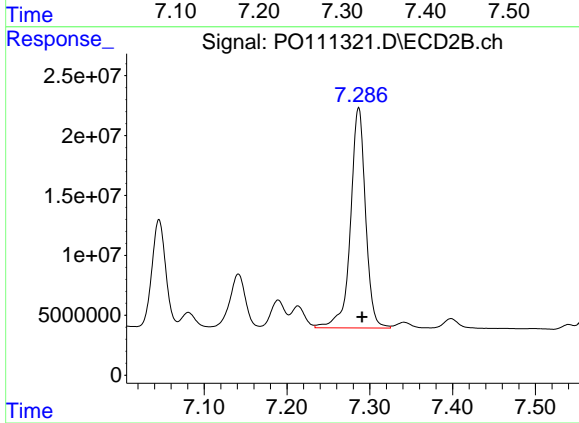
R.T.: 6.787 min  
 Delta R.T.: -0.005 min  
 Response: 129314369  
 Conc: 379.47 ng/ml



#37 AR-1262-2

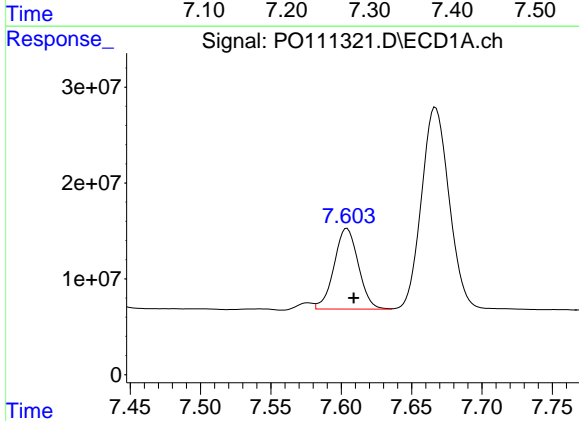
R.T.: 7.320 min  
Delta R.T.: -0.005 min  
Response: 397459393  
Conc: 491.61 ng/ml

Instrument :  
ECD\_O  
ClientSampleId :  
AR1660CCC500



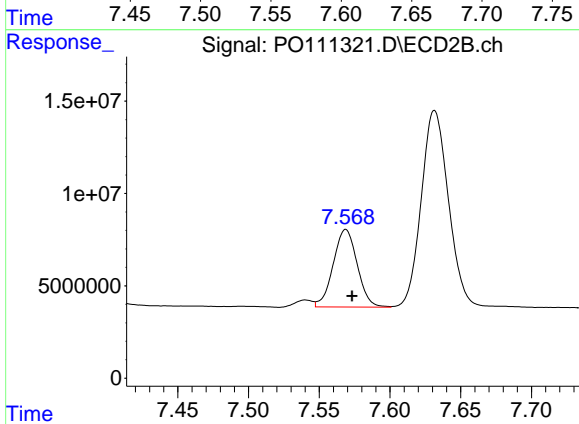
#37 AR-1262-2

R.T.: 7.287 min  
Delta R.T.: -0.004 min  
Response: 232081964  
Conc: 461.52 ng/ml



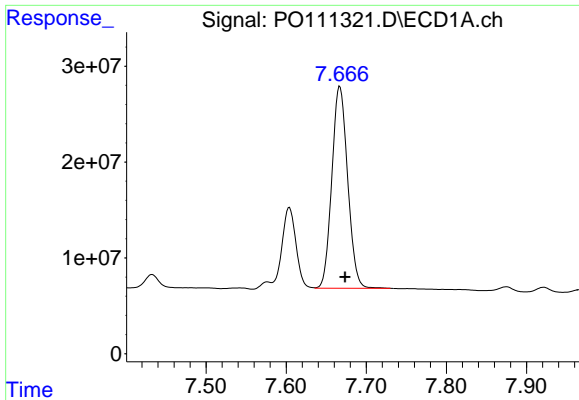
#38 AR-1262-3

R.T.: 7.604 min  
Delta R.T.: -0.005 min  
Response: 100997323  
Conc: 298.58 ng/ml



#38 AR-1262-3

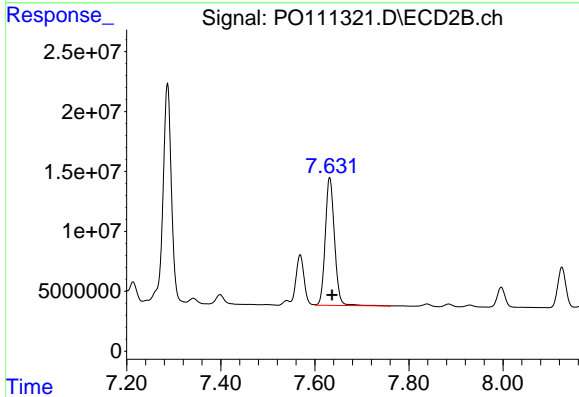
R.T.: 7.569 min  
Delta R.T.: -0.004 min  
Response: 49711164  
Conc: 264.94 ng/ml



#39 AR-1262-4

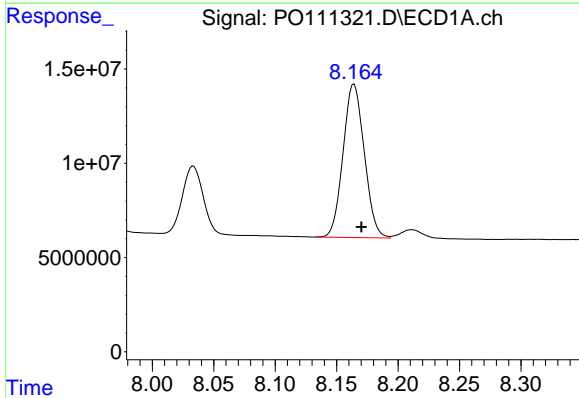
R.T.: 7.667 min  
 Delta R.T.: -0.007 min  
 Response: 288659209  
 Conc: 488.91 ng/ml

Instrument :  
 ECD\_O  
 ClientSampleId :  
 AR1660CCC500



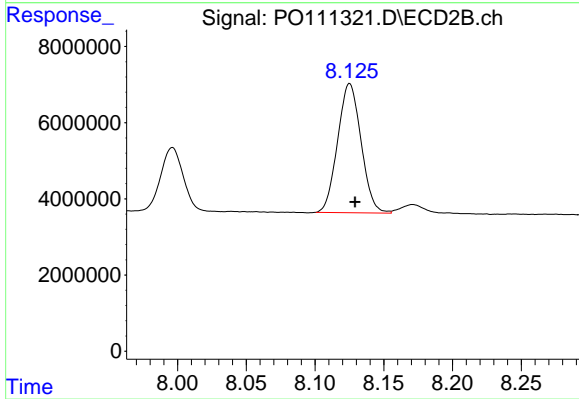
#39 AR-1262-4

R.T.: 7.632 min  
 Delta R.T.: -0.006 min  
 Response: 145599398  
 Conc: 440.90 ng/ml



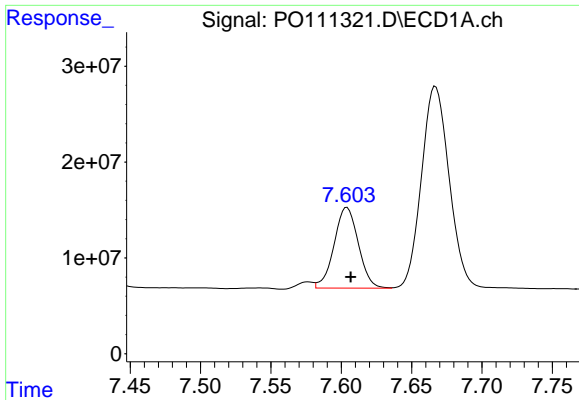
#40 AR-1262-5

R.T.: 8.164 min  
 Delta R.T.: -0.006 min  
 Response: 97984504  
 Conc: 343.54 ng/ml



#40 AR-1262-5

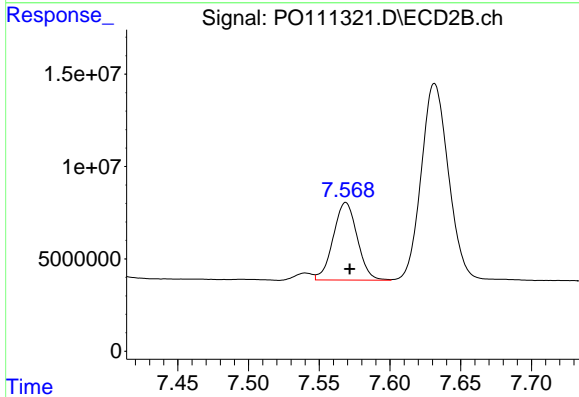
R.T.: 8.125 min  
 Delta R.T.: -0.004 min  
 Response: 40203568  
 Conc: 357.98 ng/ml



#41 AR-1268-1

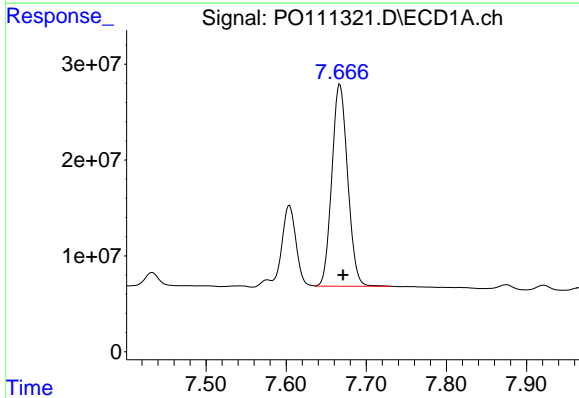
R.T.: 7.604 min  
 Delta R.T.: -0.003 min  
 Response: 100997323  
 Conc: 104.16 ng/ml

Instrument :  
 ECD\_O  
 ClientSampleId :  
 AR1660CCC500



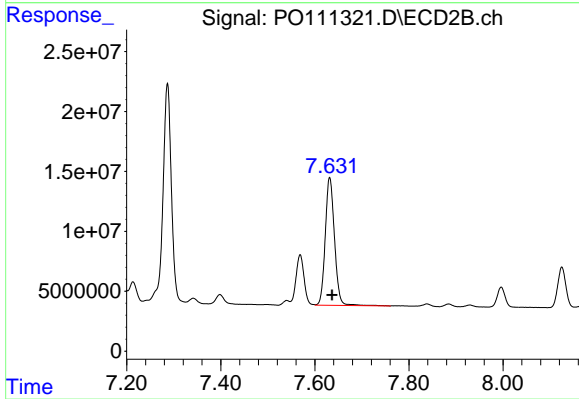
#41 AR-1268-1

R.T.: 7.569 min  
 Delta R.T.: -0.003 min  
 Response: 49711164  
 Conc: 93.78 ng/ml



#42 AR-1268-2

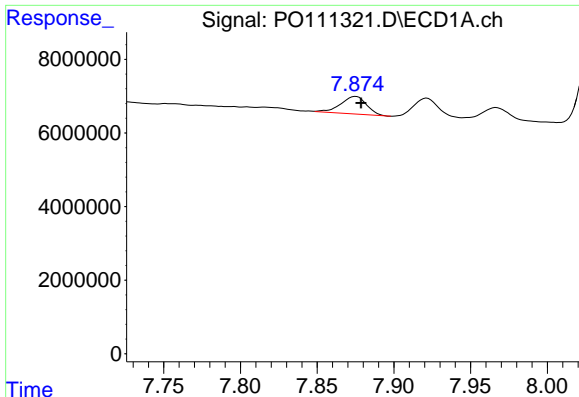
R.T.: 7.667 min  
 Delta R.T.: -0.004 min  
 Response: 288659209  
 Conc: 323.42 ng/ml



#42 AR-1268-2

R.T.: 7.632 min  
 Delta R.T.: -0.005 min  
 Response: 145599398  
 Conc: 301.86 ng/ml

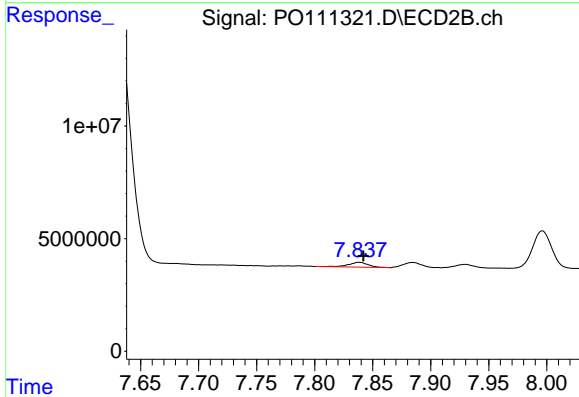




#43 AR-1268-3

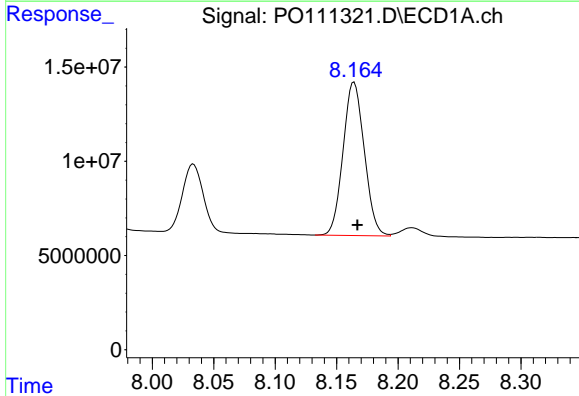
R.T.: 7.875 min  
 Delta R.T.: -0.003 min  
 Response: 5683445  
 Conc: 7.49 ng/ml

Instrument :  
 ECD\_O  
 ClientSampleId :  
 AR1660CCC500



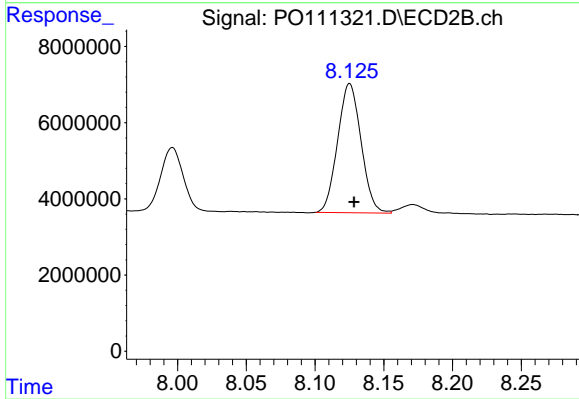
#43 AR-1268-3

R.T.: 7.838 min  
 Delta R.T.: -0.004 min  
 Response: 2586508  
 Conc: 7.42 ng/ml



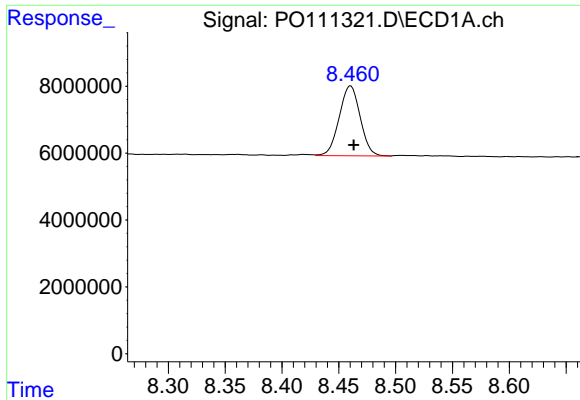
#44 AR-1268-4

R.T.: 8.164 min  
 Delta R.T.: -0.003 min  
 Response: 97984504  
 Conc: 300.03 ng/ml



#44 AR-1268-4

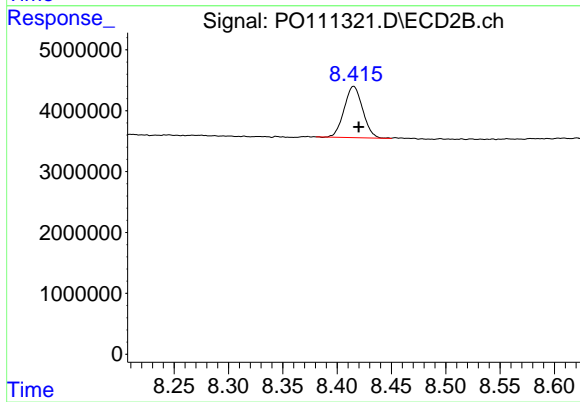
R.T.: 8.125 min  
 Delta R.T.: -0.003 min  
 Response: 40203568  
 Conc: 315.89 ng/ml



#45 AR-1268-5

R.T.: 8.460 min  
Delta R.T.: -0.003 min  
Response: 26915600  
Conc: 12.47 ng/ml

Instrument :  
ECD\_O  
ClientSampleId :  
AR1660CCC500



#45 AR-1268-5

R.T.: 8.415 min  
Delta R.T.: -0.005 min  
Response: 10029607  
Conc: 13.32 ng/ml