

Data Path : Z:\pestpcbsrv\HPCHEM1\ECD\_O\Data\P0052925\  
 Data File : PO111338.D  
 Signal(s) : Signal #1: ECD1A.ch Signal #2: ECD2B.ch  
 Acq On : 29 May 2025 17:19  
 Operator : YP/AJ  
 Sample : AR1248CCC500  
 Misc :  
 ALS Vial : 5 Sample Multiplier: 1

Instrument :  
 ECD\_O  
 ClientSampleId :  
 AR1248CCC500

Integration File signal 1: autoint1.e  
 Integration File signal 2: autoint2.e  
 Quant Time: May 29 22:47:48 2025  
 Quant Method : Z:\pestpcbsrv\HPCHEM1\ECD\_O\methods\P0051525.M  
 Quant Title : GC EXTRACTABLES  
 QLast Update : Thu May 15 07:11:53 2025  
 Response via : Initial Calibration  
 Integrator: ChemStation

Volume Inj. : 2 µl  
 Signal #1 Phase : ZB-MR2 Signal #2 Phase: ZB-MR2  
 Signal #1 Info : 30Mx0.32mmx 0.50µ Signal #2 Info : 30M x 0.32mm x 0.25µm

Compound	RT#1	RT#2	Resp#1	Resp#2	ng/ml	ng/ml
-----						
System Monitoring Compounds						
1) SA Tetrachlo...	3.680	3.677	347.7E6	310.0E6	59.101	56.872
2) SA Decachlor...	8.720	8.669	260.5E6	92204142	50.451	49.836
Target Compounds						
3) L1 AR-1016-1	4.770	4.755	90357769	70901580	401.491	371.354
4) L1 AR-1016-2	4.788	4.774	94201669	74582224	295.364	269.129
5) L1 AR-1016-3	4.845	4.950	67976548	47631095	313.077	326.073
6) L1 AR-1016-4	4.967	4.992	64594945	94873441	370.920	790.028 #
7) L1 AR-1016-5	5.223	5.204	141.2E6	116.7E6	802.171	755.982
8) L2 AR-1221-1	3.892	3.882	2547637	983196	29.247	13.315 #
9) L2 AR-1221-2	3.981	3.974	12354486	5345164	193.936	98.231 #
10) L2 AR-1221-3	4.054	4.047	11006141	6656133	57.226	39.833 #
11) L3 AR-1232-1	4.054	4.047	11006141	6656133	71.854	50.968 #
12) L3 AR-1232-2	4.548	4.774	36425925	74582224	444.509	568.634 #
13) L3 AR-1232-3	4.788	4.950	94201669	47631095	615.991	699.720
14) L3 AR-1232-4	4.967	5.033	64594945	100.4E6	785.335	1627.228 #
15) L3 AR-1232-5	5.008	5.204	118.3E6	116.7E6	2180.073	1775.740
16) L4 AR-1242-1	4.770	4.755	90357769	70901580	472.583	440.091
17) L4 AR-1242-2	4.788	4.774	94201669	74582224	346.311	317.904
18) L4 AR-1242-3	4.845	4.950	67976548	47631095	365.491	385.307
19) L4 AR-1242-4	4.967	5.033	64594945	100.4E6	437.042	811.886 #
20) L4 AR-1242-5	5.618	5.554	147.7E6	161.9E6	949.602	1065.194
21) L5 AR-1248-1	4.770	4.755	90357769	70901580	589.934	546.540
22) L5 AR-1248-2	5.008	4.992	118.3E6	94873441	589.920	539.386
23) L5 AR-1248-3	5.223	5.033	141.2E6	100.4E6	551.455	534.935
24) L5 AR-1248-4	5.576	5.204	206.2E6	116.7E6	569.366	530.949
25) L5 AR-1248-5	5.618	5.595	147.7E6	116.6E6	563.632	534.069
26) L6 AR-1254-1	5.576	5.554	206.2E6	161.9E6	543.275	499.617
27) L6 AR-1254-2	5.726	5.702	58719402	47985325	179.693	169.413
28) L6 AR-1254-3	6.131	6.104	87973496	70720950	167.205	163.914
29) L6 AR-1254-4	6.360	6.331	67166931	47709739	199.855	192.888
30) L6 AR-1254-5	6.779	6.748	21059569	13846453	44.387	40.026
31) L7 AR-1260-1	6.275	6.248	43521866	34206308	142.710	136.886
32) L7 AR-1260-2	6.451	6.421	9359579	5278459	24.441	17.936 #
33) L7 AR-1260-3	6.852	6.573	6690991	7541054	19.195	26.301 #
34) L7 AR-1260-4	7.079	7.047	1338145	703815	4.780	3.506 #
35) L7 AR-1260-5	7.320	7.285	4446298	2165579	6.176	4.712
36) L8 AR-1262-1	6.852	6.819	6690991	1509705	13.749	4.430 #
37) L8 AR-1262-2	7.320	7.285	4446298	2165579	5.499	4.307
38) L8 AR-1262-3	7.605	7.572	524425	767933	1.550	4.093 #
39) L8 AR-1262-4	7.666	7.628	2098042	2314374	3.554	7.008 #
40) L8 AR-1262-5	8.166	8.121	677096	304156	2.374	2.708
41) L9 AR-1268-1	7.605	7.572	524425	767933	0.541	1.449 #

Data Path : Z:\pestpcbsrv\HPCHEM1\ECD\_0\Data\P0052925\  
 Data File : P0111338.D  
 Signal(s) : Signal #1: ECD1A.ch Signal #2: ECD2B.ch  
 Acq On : 29 May 2025 17:19  
 Operator : YP/AJ  
 Sample : AR1248CCC500  
 Misc :  
 ALS Vial : 5 Sample Multiplier: 1

Instrument :  
 ECD\_0  
 ClientSampleId :  
 AR1248CCC500

Integration File signal 1: autoint1.e  
 Integration File signal 2: autoint2.e  
 Quant Time: May 29 22:47:48 2025  
 Quant Method : Z:\pestpcbsrv\HPCHEM1\ECD\_0\methods\P0051525.M  
 Quant Title : GC EXTRACTABLES  
 QLast Update : Thu May 15 07:11:53 2025  
 Response via : Initial Calibration  
 Integrator: ChemStation

Volume Inj. : 2 µl  
 Signal #1 Phase : ZB-MR1 Signal #2 Phase: ZB-MR2  
 Signal #1 Info : 30Mx0.32mmx 0.50µ Signal #2 Info : 30M x 0.32mm x 0.25µm

	Compound	RT#1	RT#2	Resp#1	Resp#2	ng/ml	ng/ml
42)	L9 AR-1268-2	7.666	7.628	2098042	2314374	2.351	4.798 #
43)	L9 AR-1268-3	7.875	7.834	279337	641124	0.368	1.840 #
44)	L9 AR-1268-4	8.166	8.121	677096	304156	2.073	2.390
45)	L9 AR-1268-5	8.461	8.413	2064933	623005	0.957	0.828

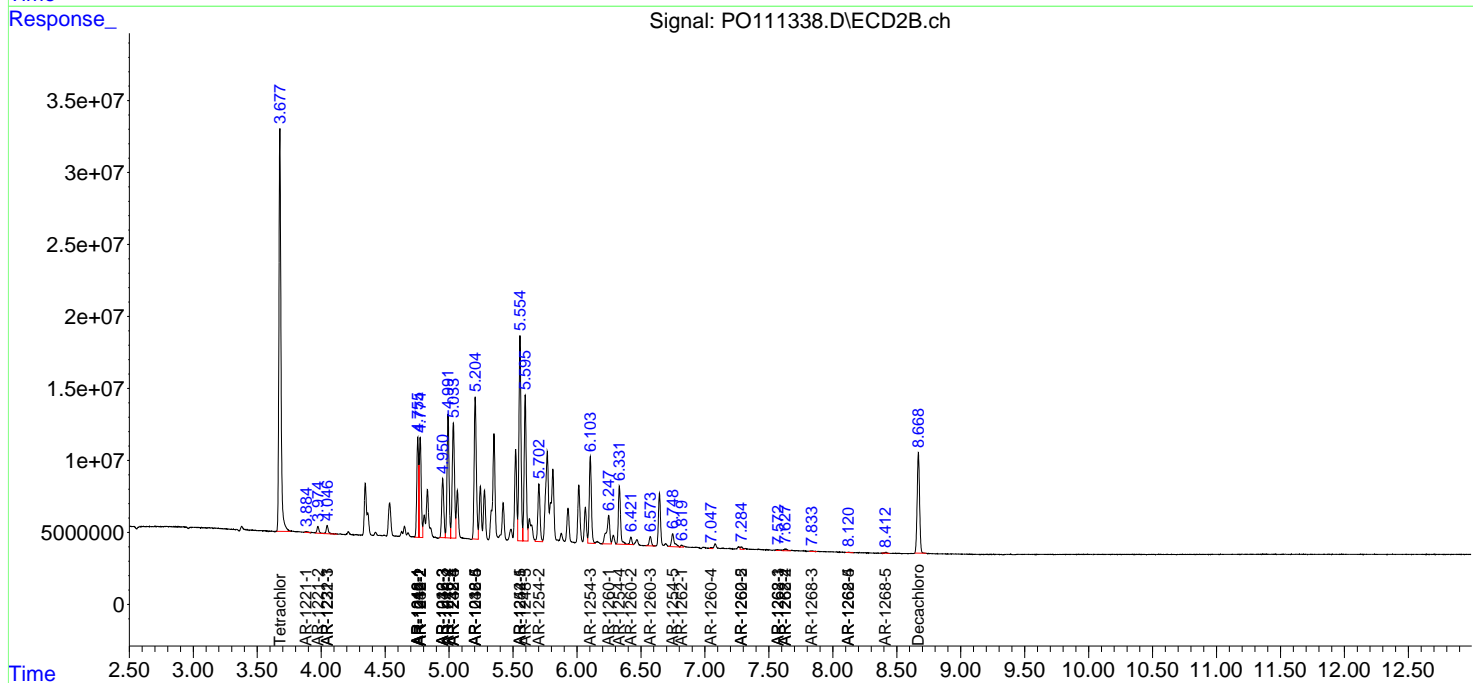
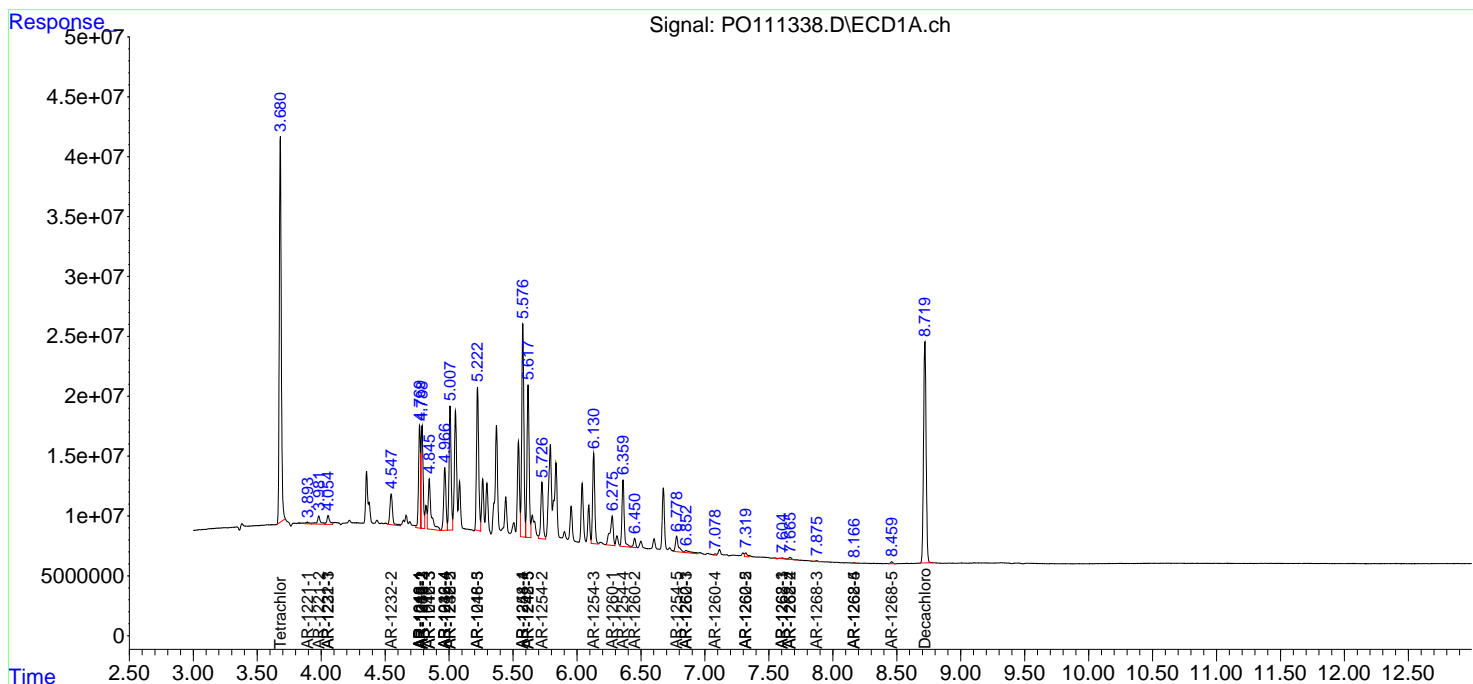
(f)=RT Delta > 1/2 Window (#)=Amounts differ by > 25% (m)=manual int.

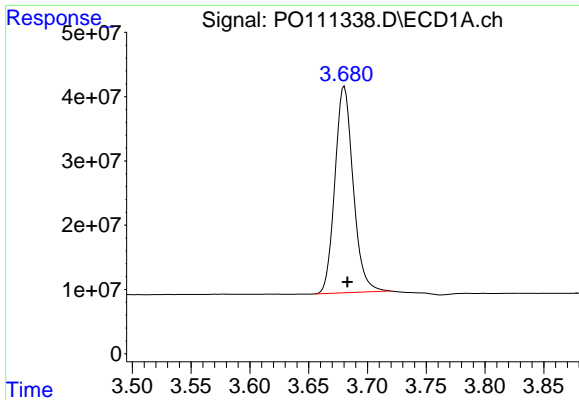
Data Path : Z:\pestpcbsrv\HPCHEM1\ECD\_O\Data\P0052925\  
 Data File : P0111338.D  
 Signal(s) : Signal #1: ECD1A.ch Signal #2: ECD2B.ch  
 Acq On : 29 May 2025 17:19  
 Operator : YP/AJ  
 Sample : AR1248CCC500  
 Misc :  
 ALS Vial : 5 Sample Multiplier: 1

Instrument :  
 ECD\_O  
 ClientSampleId :  
 AR1248CCC500

Integration File signal 1: autoint1.e  
 Integration File signal 2: autoint2.e  
 Quant Time: May 29 22:47:48 2025  
 Quant Method : Z:\pestpcbsrv\HPCHEM1\ECD\_O\methods\P0051525.M  
 Quant Title : GC EXTRACTABLES  
 QLast Update : Thu May 15 07:11:53 2025  
 Response via : Initial Calibration  
 Integrator: ChemStation

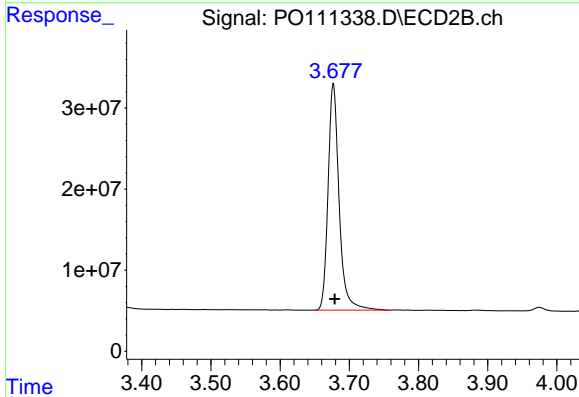
Volume Inj. : 2 µl  
 Signal #1 Phase : ZB-MR1 Signal #2 Phase: ZB-MR2  
 Signal #1 Info : 30Mx0.32mmx 0.50µ Signal #2 Info : 30M x 0.32mm x 0.25µm



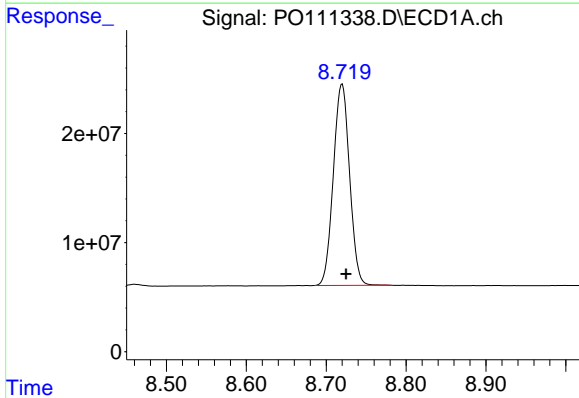


#1 Tetrachloro-m-xylene  
 R.T.: 3.680 min  
 Delta R.T.: -0.003 min  
 Response: 347702580  
 Conc: 59.10 ng/ml

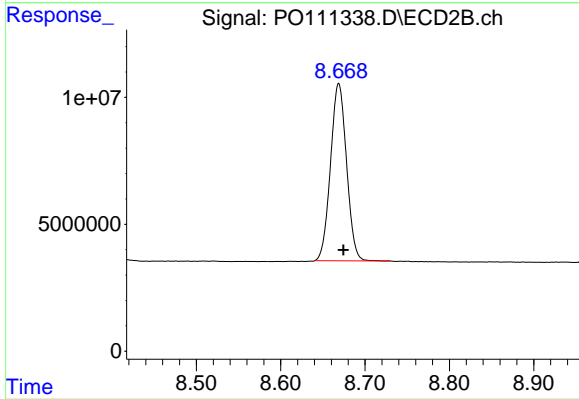
Instrument :  
 ECD\_O  
 ClientSampleId :  
 AR1248CCC500



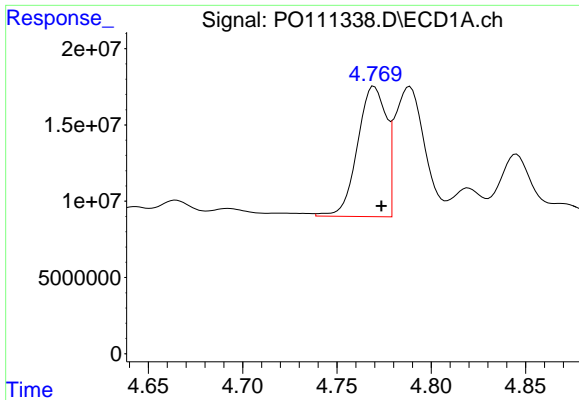
#1 Tetrachloro-m-xylene  
 R.T.: 3.677 min  
 Delta R.T.: -0.002 min  
 Response: 310033432  
 Conc: 56.87 ng/ml



#2 Decachlorobiphenyl  
 R.T.: 8.720 min  
 Delta R.T.: -0.005 min  
 Response: 260473499  
 Conc: 50.45 ng/ml



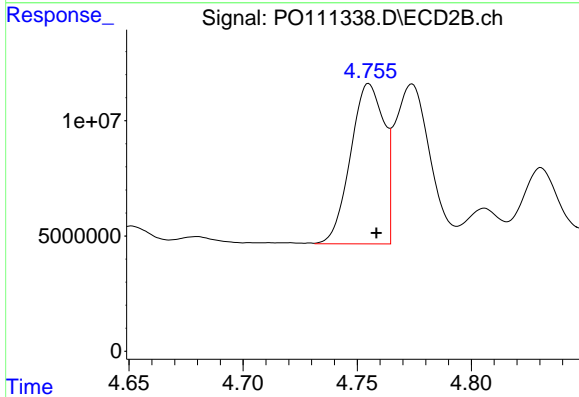
#2 Decachlorobiphenyl  
 R.T.: 8.669 min  
 Delta R.T.: -0.005 min  
 Response: 92204142  
 Conc: 49.84 ng/ml



#3 AR-1016-1

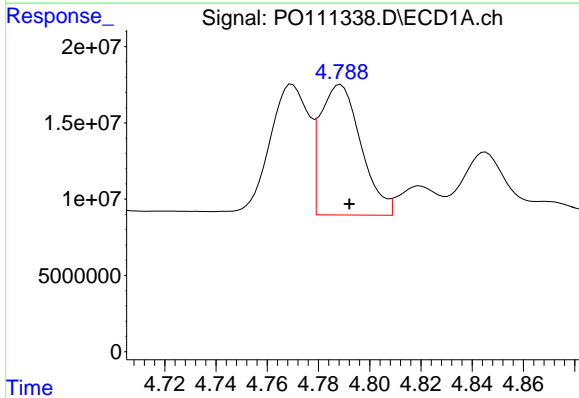
R.T.: 4.770 min  
 Delta R.T.: -0.004 min  
 Response: 90357769  
 Conc: 401.49 ng/ml

Instrument :  
 ECD\_O  
 ClientSampleId :  
 AR1248CCC500



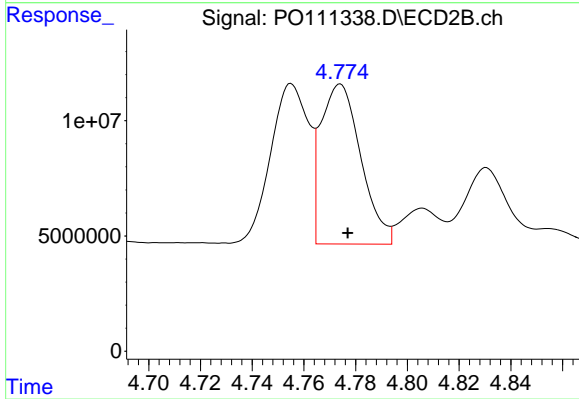
#3 AR-1016-1

R.T.: 4.755 min  
 Delta R.T.: -0.003 min  
 Response: 70901580  
 Conc: 371.35 ng/ml



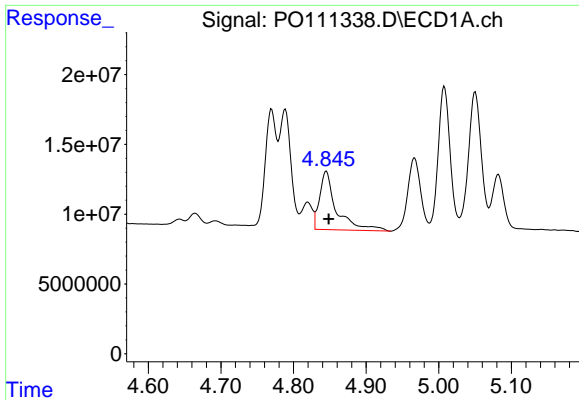
#4 AR-1016-2

R.T.: 4.788 min  
 Delta R.T.: -0.004 min  
 Response: 94201669  
 Conc: 295.36 ng/ml



#4 AR-1016-2

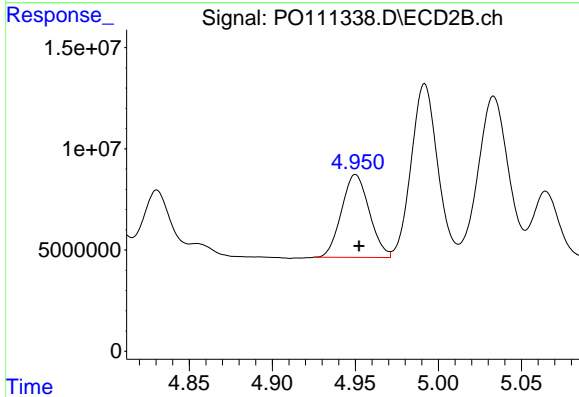
R.T.: 4.774 min  
 Delta R.T.: -0.003 min  
 Response: 74582224  
 Conc: 269.13 ng/ml



#5 AR-1016-3

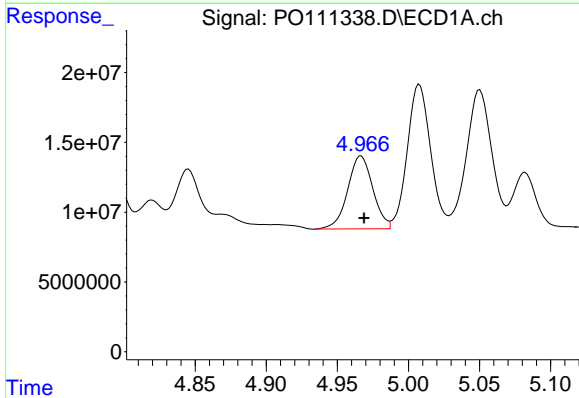
R.T.: 4.845 min  
 Delta R.T.: -0.004 min  
 Response: 67976548  
 Conc: 313.08 ng/ml

Instrument :  
 ECD\_O  
 ClientSampleId :  
 AR1248CCC500



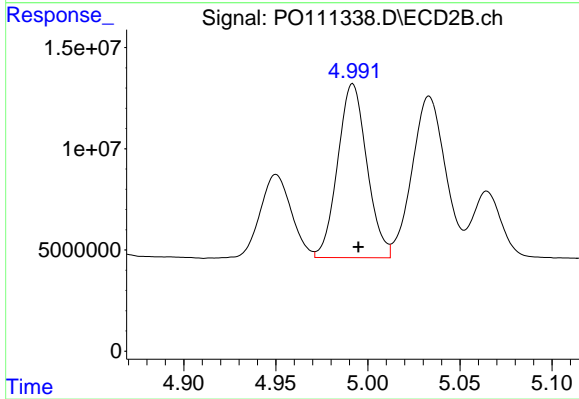
#5 AR-1016-3

R.T.: 4.950 min  
 Delta R.T.: -0.002 min  
 Response: 47631095  
 Conc: 326.07 ng/ml



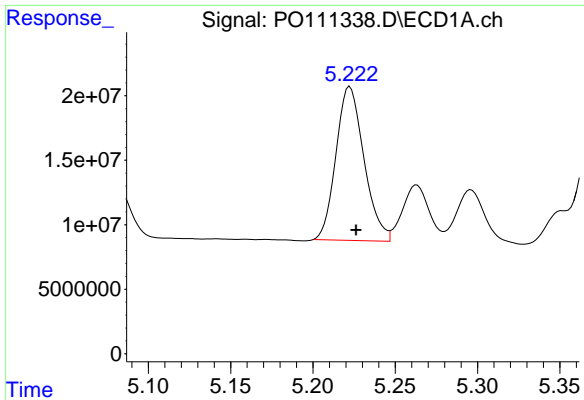
#6 AR-1016-4

R.T.: 4.967 min  
 Delta R.T.: -0.002 min  
 Response: 64594945  
 Conc: 370.92 ng/ml



#6 AR-1016-4

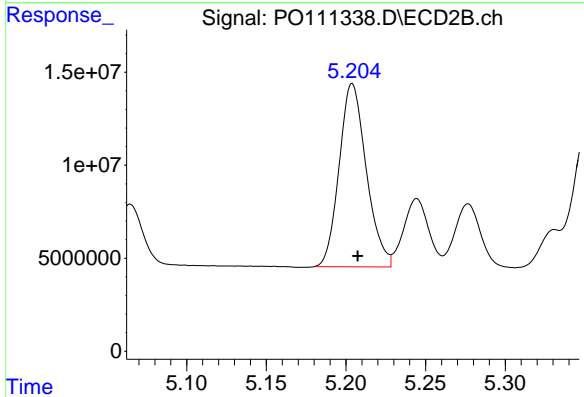
R.T.: 4.992 min  
 Delta R.T.: -0.003 min  
 Response: 94873441  
 Conc: 790.03 ng/ml



#7 AR-1016-5

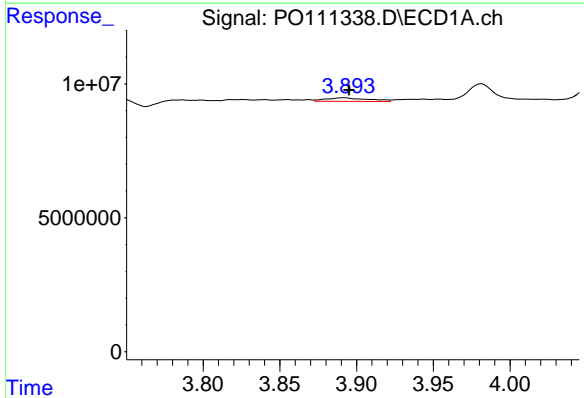
R.T.: 5.223 min  
 Delta R.T.: -0.004 min  
 Response: 141175200  
 Conc: 802.17 ng/ml

Instrument :  
 ECD\_O  
 ClientSampleId :  
 AR1248CCC500



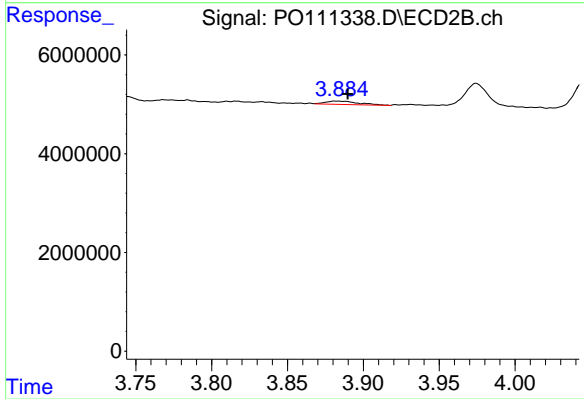
#7 AR-1016-5

R.T.: 5.204 min  
 Delta R.T.: -0.003 min  
 Response: 116723930  
 Conc: 755.98 ng/ml



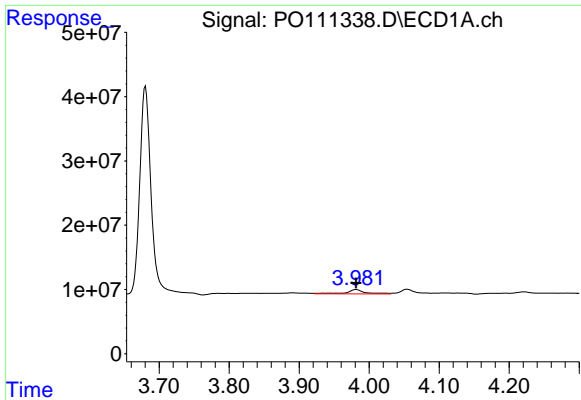
#8 AR-1221-1

R.T.: 3.892 min  
 Delta R.T.: -0.003 min  
 Response: 2547637  
 Conc: 29.25 ng/ml



#8 AR-1221-1

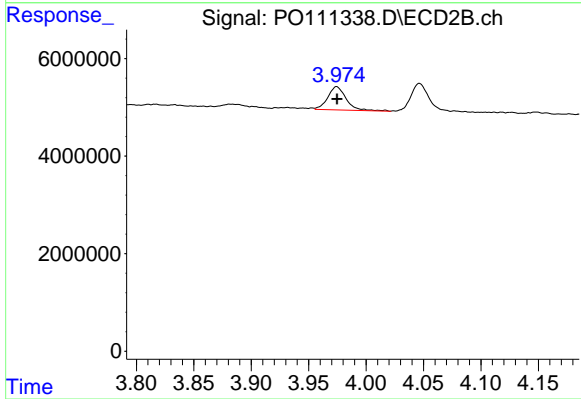
R.T.: 3.882 min  
 Delta R.T.: -0.008 min  
 Response: 983196  
 Conc: 13.31 ng/ml



#9 AR-1221-2

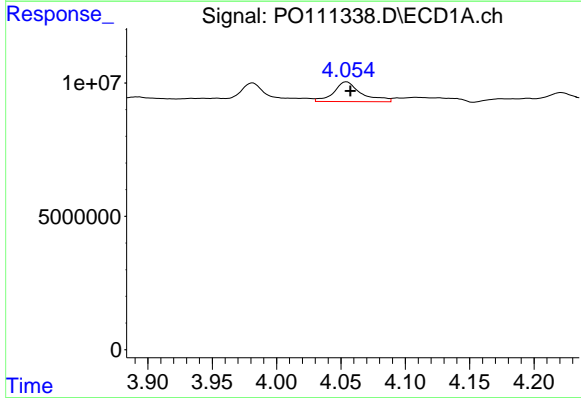
R.T.: 3.981 min  
 Delta R.T.: 0.000 min  
 Response: 12354486  
 Conc: 193.94 ng/ml

Instrument :  
 ECD\_O  
 ClientSampleId :  
 AR1248CCC500



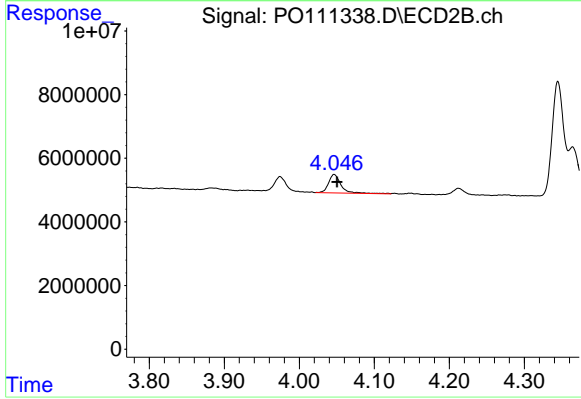
#9 AR-1221-2

R.T.: 3.974 min  
 Delta R.T.: 0.000 min  
 Response: 5345164  
 Conc: 98.23 ng/ml



#10 AR-1221-3

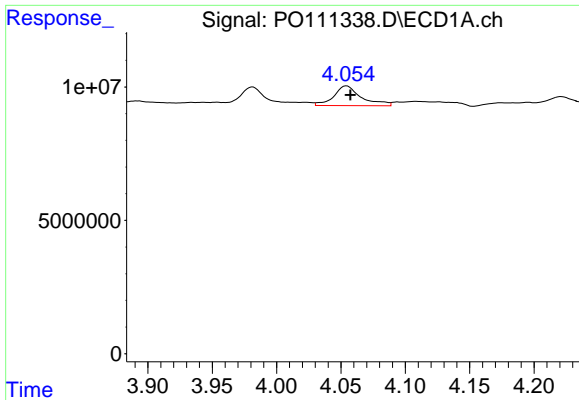
R.T.: 4.054 min  
 Delta R.T.: -0.003 min  
 Response: 11006141  
 Conc: 57.23 ng/ml



#10 AR-1221-3

R.T.: 4.047 min  
 Delta R.T.: -0.004 min  
 Response: 6656133  
 Conc: 39.83 ng/ml

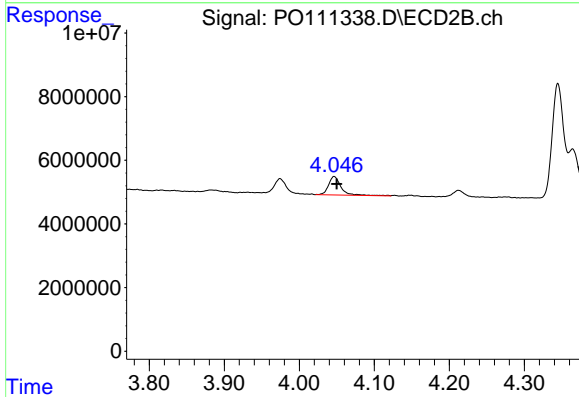




#11 AR-1232-1

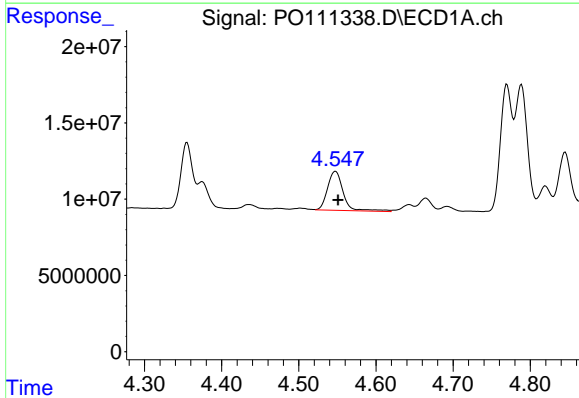
R.T.: 4.054 min  
 Delta R.T.: -0.003 min  
 Response: 11006141  
 Conc: 71.85 ng/ml

Instrument :  
 ECD\_O  
 ClientSampleId :  
 AR1248CCC500



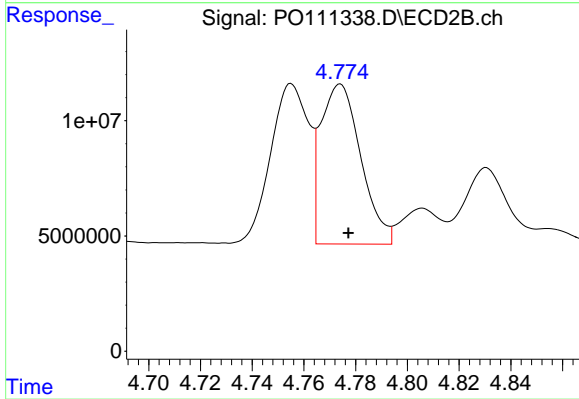
#11 AR-1232-1

R.T.: 4.047 min  
 Delta R.T.: -0.003 min  
 Response: 6656133  
 Conc: 50.97 ng/ml



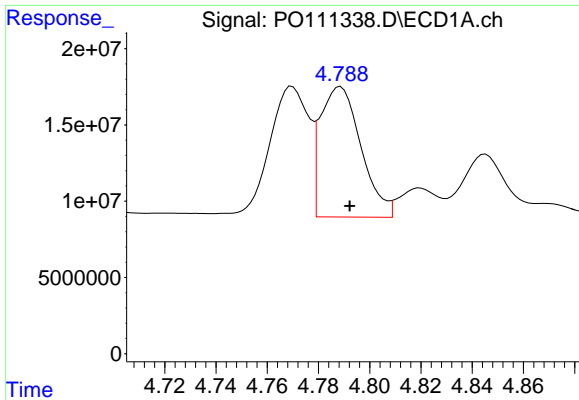
#12 AR-1232-2

R.T.: 4.548 min  
 Delta R.T.: -0.004 min  
 Response: 36425925  
 Conc: 444.51 ng/ml



#12 AR-1232-2

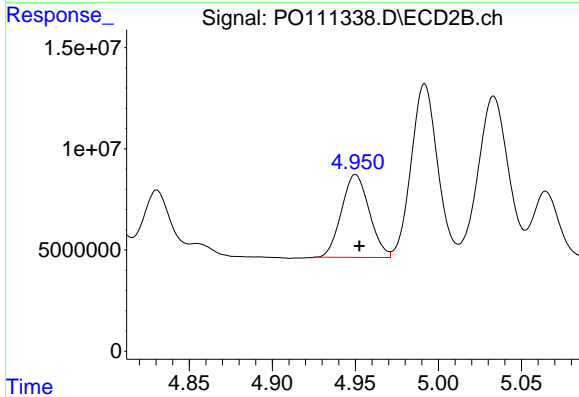
R.T.: 4.774 min  
 Delta R.T.: -0.003 min  
 Response: 74582224  
 Conc: 568.63 ng/ml



#13 AR-1232-3

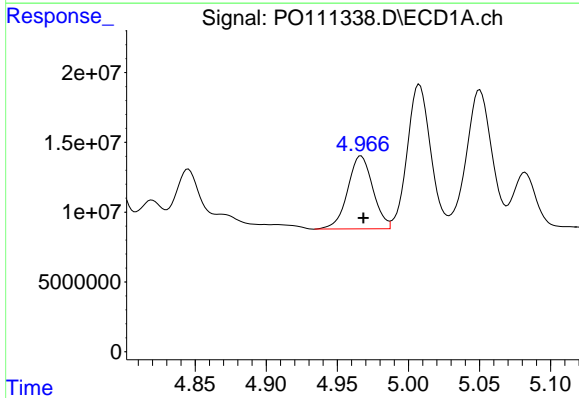
R.T.: 4.788 min  
 Delta R.T.: -0.004 min  
 Response: 94201669  
 Conc: 615.99 ng/ml

Instrument :  
 ECD\_O  
 ClientSampleId :  
 AR1248CCC500



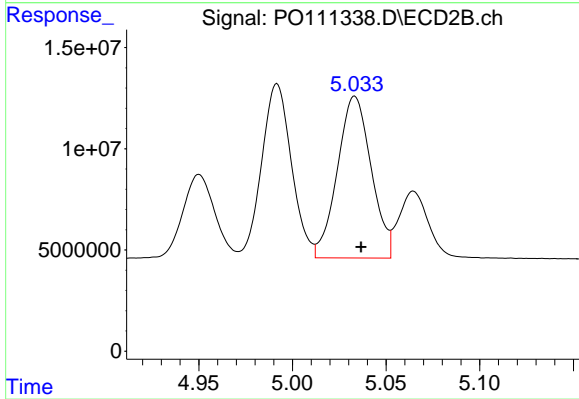
#13 AR-1232-3

R.T.: 4.950 min  
 Delta R.T.: -0.002 min  
 Response: 47631095  
 Conc: 699.72 ng/ml



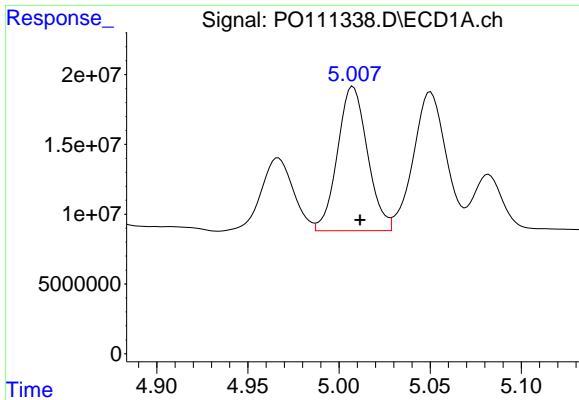
#14 AR-1232-4

R.T.: 4.967 min  
 Delta R.T.: -0.002 min  
 Response: 64594945  
 Conc: 785.34 ng/ml



#14 AR-1232-4

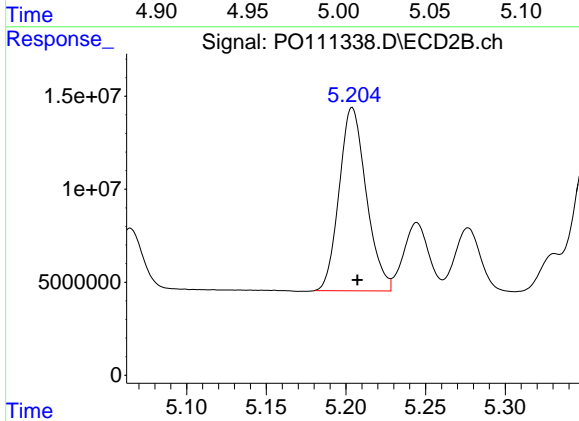
R.T.: 5.033 min  
 Delta R.T.: -0.003 min  
 Response: 100361502  
 Conc: 1627.23 ng/ml



#15 AR-1232-5

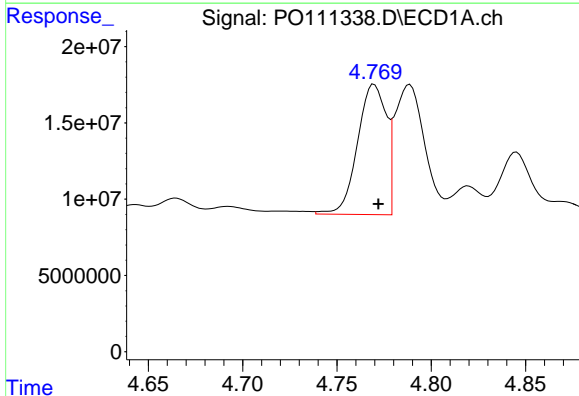
R.T.: 5.008 min  
 Delta R.T.: -0.004 min  
 Response: 118289246  
 Conc: 2180.07 ng/ml

Instrument :  
 ECD\_O  
 ClientSampleId :  
 AR1248CCC500



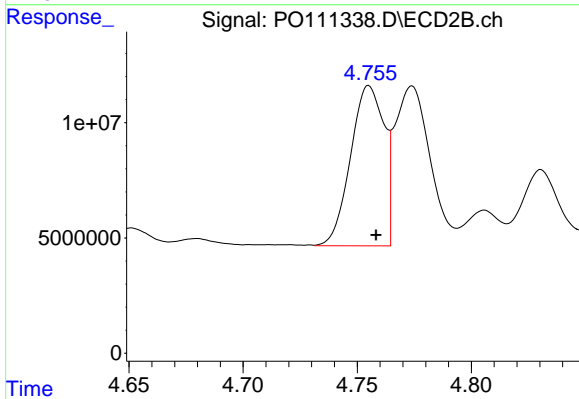
#15 AR-1232-5

R.T.: 5.204 min  
 Delta R.T.: -0.003 min  
 Response: 116723930  
 Conc: 1775.74 ng/ml



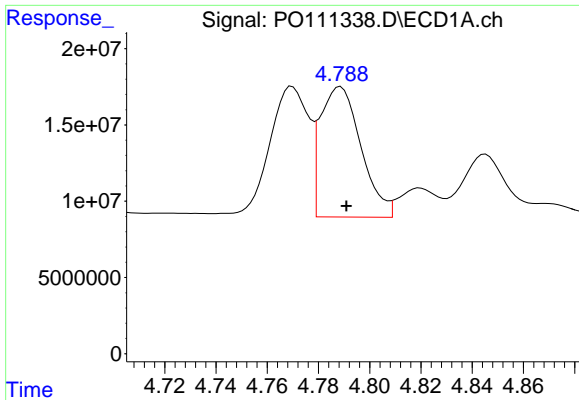
#16 AR-1242-1

R.T.: 4.770 min  
 Delta R.T.: -0.002 min  
 Response: 90357769  
 Conc: 472.58 ng/ml



#16 AR-1242-1

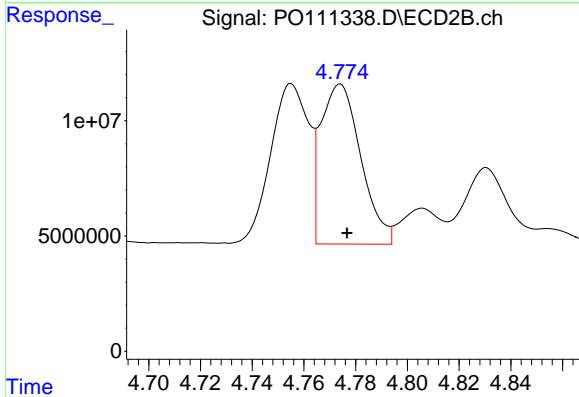
R.T.: 4.755 min  
 Delta R.T.: -0.003 min  
 Response: 70901580  
 Conc: 440.09 ng/ml



#17 AR-1242-2

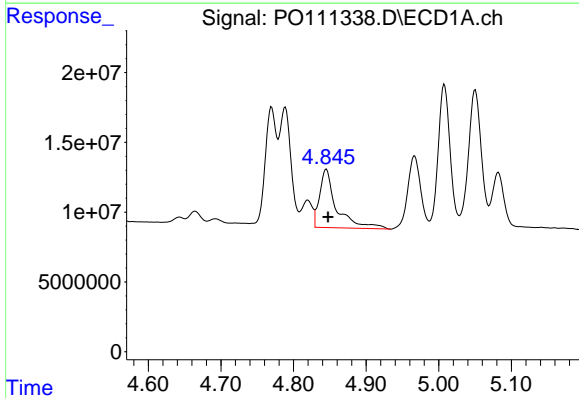
R.T.: 4.788 min  
 Delta R.T.: -0.002 min  
 Response: 94201669  
 Conc: 346.31 ng/ml

Instrument :  
 ECD\_O  
 ClientSampleId :  
 AR1248CCC500



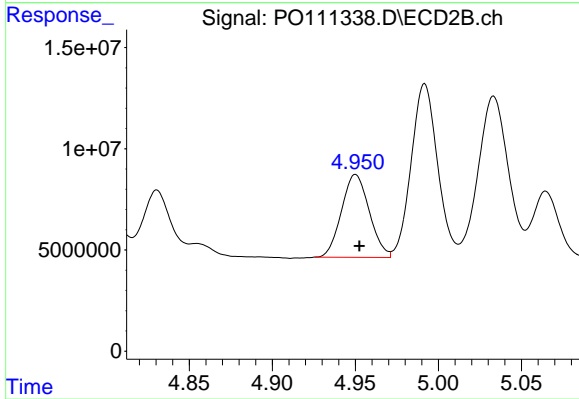
#17 AR-1242-2

R.T.: 4.774 min  
 Delta R.T.: -0.003 min  
 Response: 74582224  
 Conc: 317.90 ng/ml



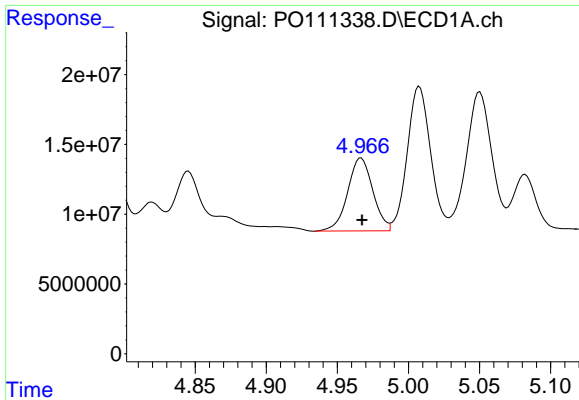
#18 AR-1242-3

R.T.: 4.845 min  
 Delta R.T.: -0.002 min  
 Response: 67976548  
 Conc: 365.49 ng/ml



#18 AR-1242-3

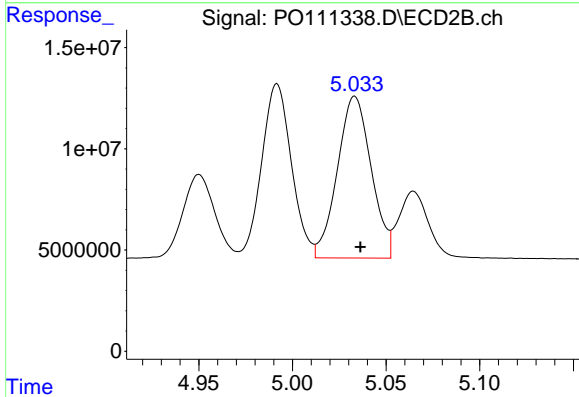
R.T.: 4.950 min  
 Delta R.T.: -0.002 min  
 Response: 47631095  
 Conc: 385.31 ng/ml



#19 AR-1242-4

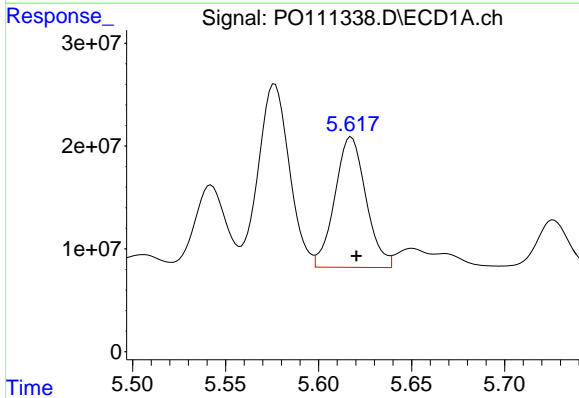
R.T.: 4.967 min  
 Delta R.T.: 0.000 min  
 Response: 64594945  
 Conc: 437.04 ng/ml

Instrument :  
 ECD\_O  
 ClientSampleId :  
 AR1248CCC500



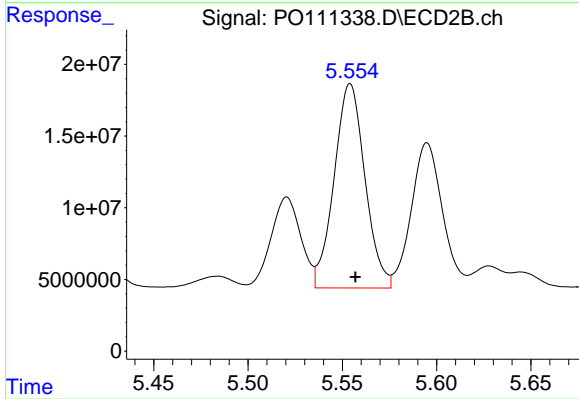
#19 AR-1242-4

R.T.: 5.033 min  
 Delta R.T.: -0.003 min  
 Response: 100361502  
 Conc: 811.89 ng/ml



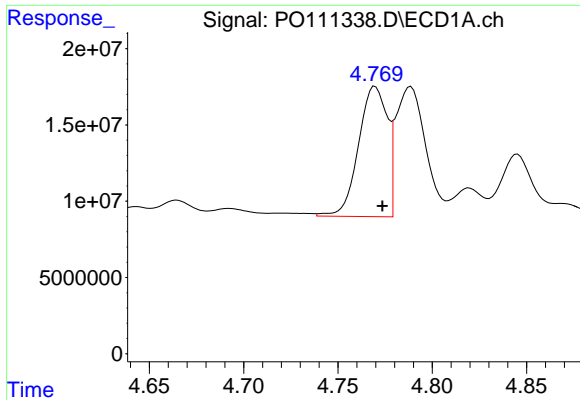
#20 AR-1242-5

R.T.: 5.618 min  
 Delta R.T.: -0.003 min  
 Response: 147702869  
 Conc: 949.60 ng/ml



#20 AR-1242-5

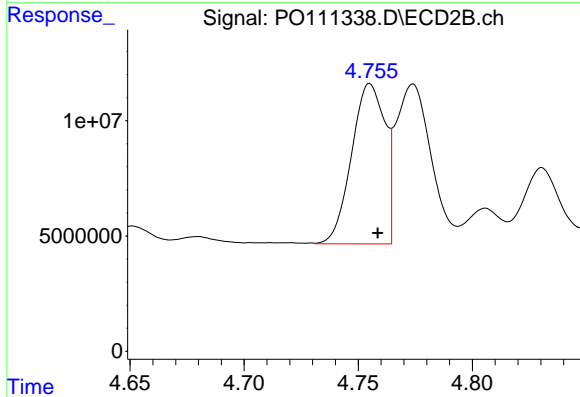
R.T.: 5.554 min  
 Delta R.T.: -0.003 min  
 Response: 161895323  
 Conc: 1065.19 ng/ml



#21 AR-1248-1

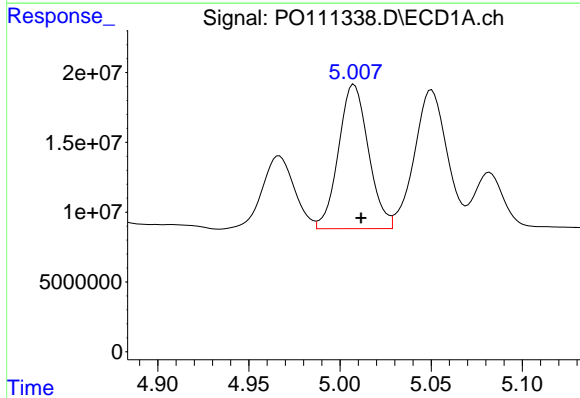
R.T.: 4.770 min  
 Delta R.T.: -0.004 min  
 Response: 90357769  
 Conc: 589.93 ng/ml

Instrument :  
 ECD\_O  
 ClientSampleId :  
 AR1248CCC500



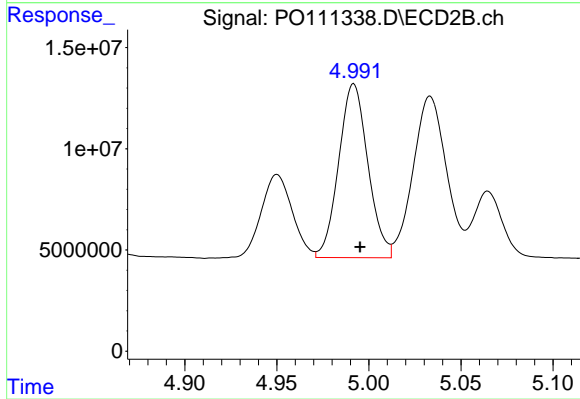
#21 AR-1248-1

R.T.: 4.755 min  
 Delta R.T.: -0.003 min  
 Response: 70901580  
 Conc: 546.54 ng/ml



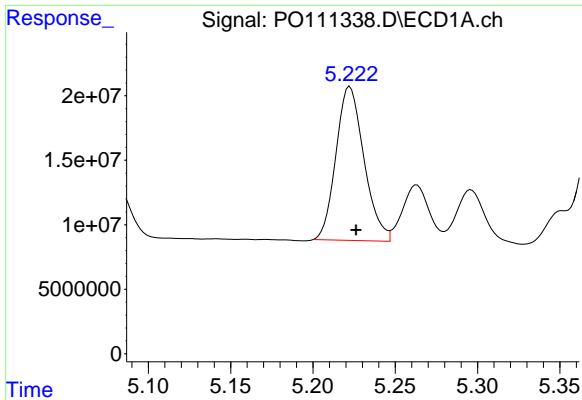
#22 AR-1248-2

R.T.: 5.008 min  
 Delta R.T.: -0.004 min  
 Response: 118289246  
 Conc: 589.92 ng/ml



#22 AR-1248-2

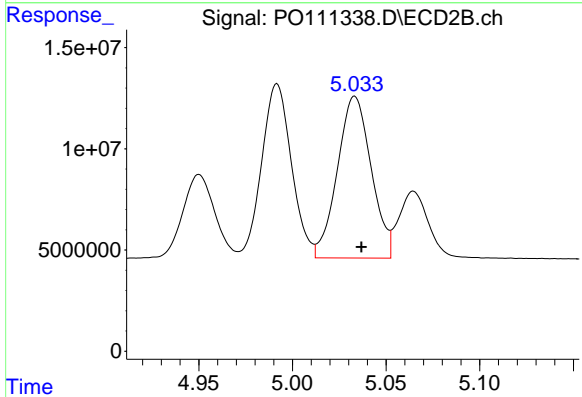
R.T.: 4.992 min  
 Delta R.T.: -0.003 min  
 Response: 94873441  
 Conc: 539.39 ng/ml



#23 AR-1248-3

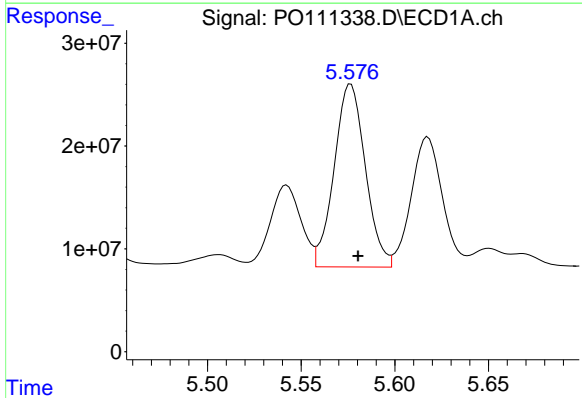
R.T.: 5.223 min  
 Delta R.T.: -0.004 min  
 Response: 141175200  
 Conc: 551.45 ng/ml

Instrument :  
 ECD\_O  
 ClientSampleId :  
 AR1248CCC500



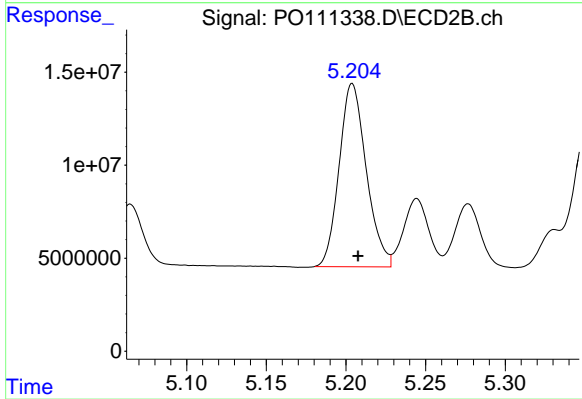
#23 AR-1248-3

R.T.: 5.033 min  
 Delta R.T.: -0.004 min  
 Response: 100361502  
 Conc: 534.94 ng/ml



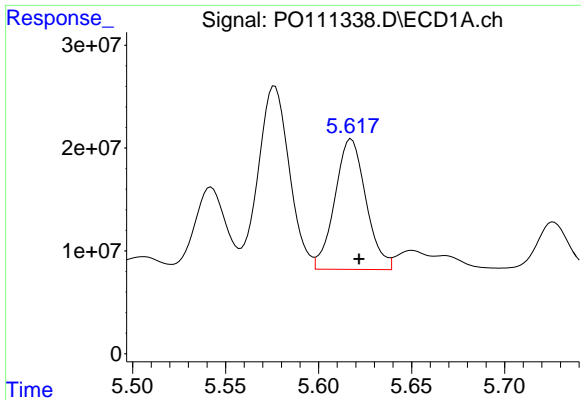
#24 AR-1248-4

R.T.: 5.576 min  
 Delta R.T.: -0.004 min  
 Response: 206213505  
 Conc: 569.37 ng/ml



#24 AR-1248-4

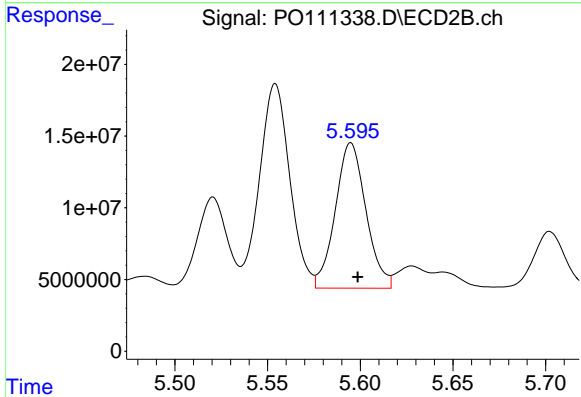
R.T.: 5.204 min  
 Delta R.T.: -0.004 min  
 Response: 116723930  
 Conc: 530.95 ng/ml



#25 AR-1248-5

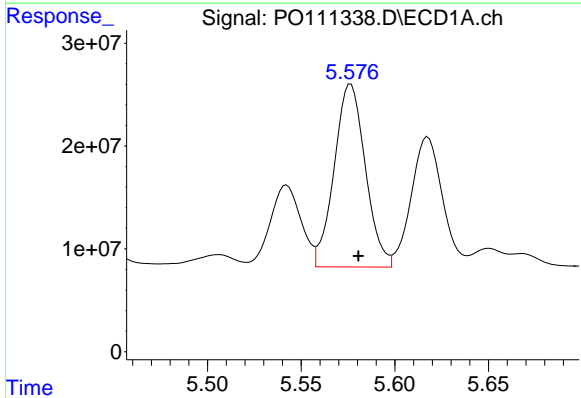
R.T.: 5.618 min  
 Delta R.T.: -0.004 min  
 Response: 147702869  
 Conc: 563.63 ng/ml

Instrument :  
 ECD\_O  
 ClientSampleId :  
 AR1248CCC500



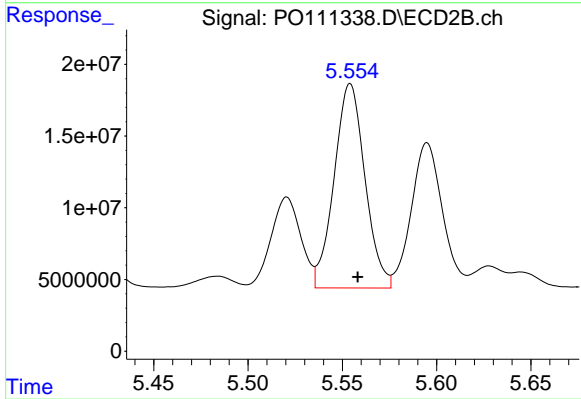
#25 AR-1248-5

R.T.: 5.595 min  
 Delta R.T.: -0.004 min  
 Response: 116600642  
 Conc: 534.07 ng/ml



#26 AR-1254-1

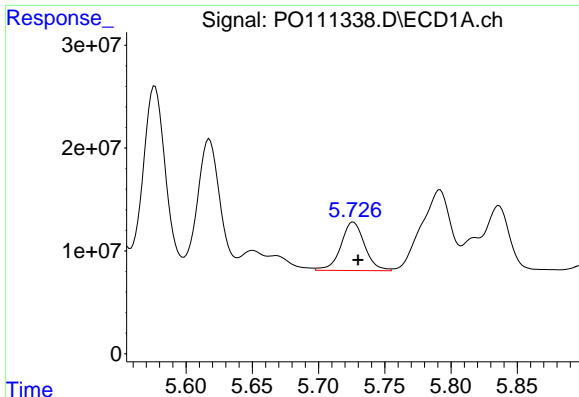
R.T.: 5.576 min  
 Delta R.T.: -0.004 min  
 Response: 206213505  
 Conc: 543.27 ng/ml



#26 AR-1254-1

R.T.: 5.554 min  
 Delta R.T.: -0.004 min  
 Response: 161895323  
 Conc: 499.62 ng/ml

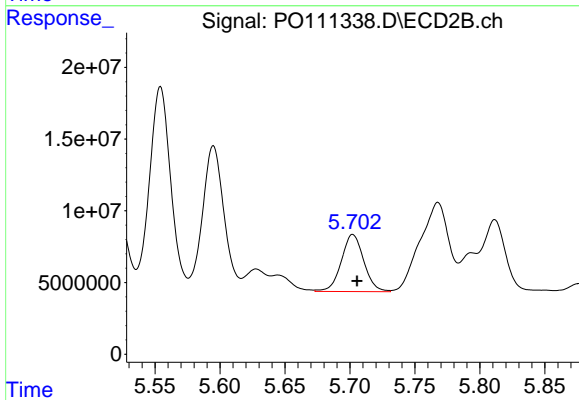




#27 AR-1254-2

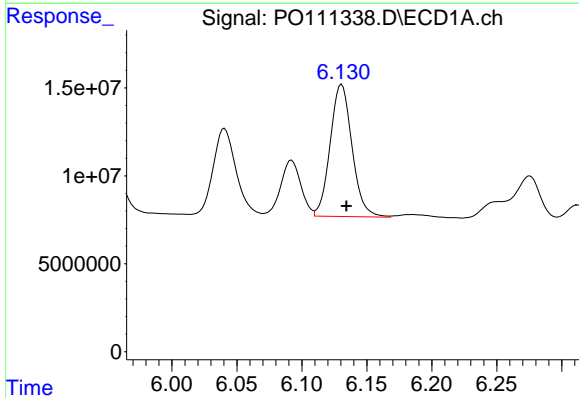
R.T.: 5.726 min  
Delta R.T.: -0.003 min  
Response: 58719402  
Conc: 179.69 ng/ml

Instrument :  
ECD\_O  
ClientSampleId :  
AR1248CCC500



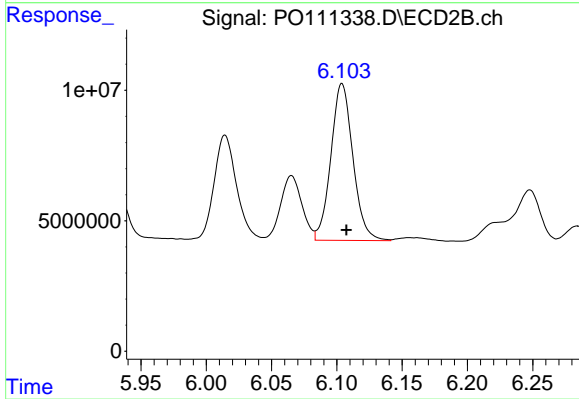
#27 AR-1254-2

R.T.: 5.702 min  
Delta R.T.: -0.003 min  
Response: 47985325  
Conc: 169.41 ng/ml



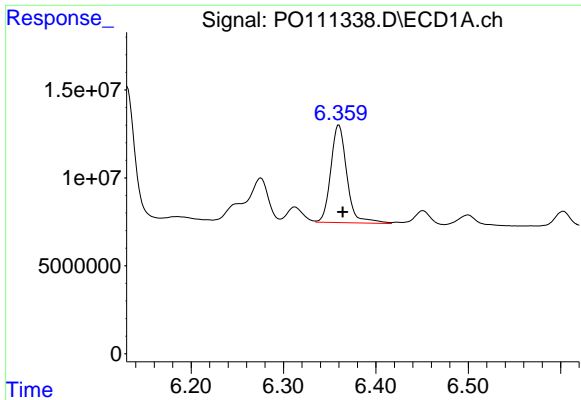
#28 AR-1254-3

R.T.: 6.131 min  
Delta R.T.: -0.004 min  
Response: 87973496  
Conc: 167.20 ng/ml



#28 AR-1254-3

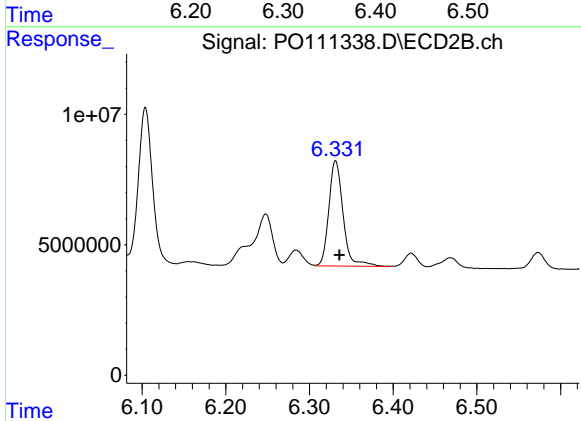
R.T.: 6.104 min  
Delta R.T.: -0.003 min  
Response: 70720950  
Conc: 163.91 ng/ml



#29 AR-1254-4

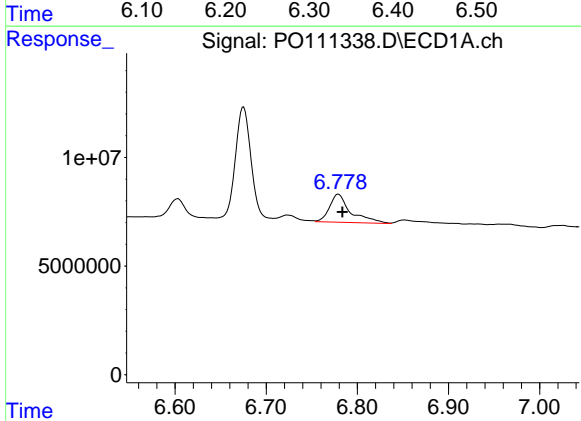
R.T.: 6.360 min  
Delta R.T.: -0.004 min  
Response: 67166931  
Conc: 199.85 ng/ml

Instrument :  
ECD\_O  
ClientSampleId :  
AR1248CCC500



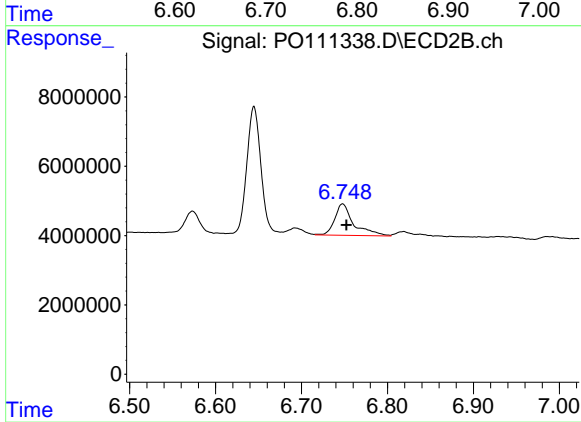
#29 AR-1254-4

R.T.: 6.331 min  
Delta R.T.: -0.004 min  
Response: 47709739  
Conc: 192.89 ng/ml



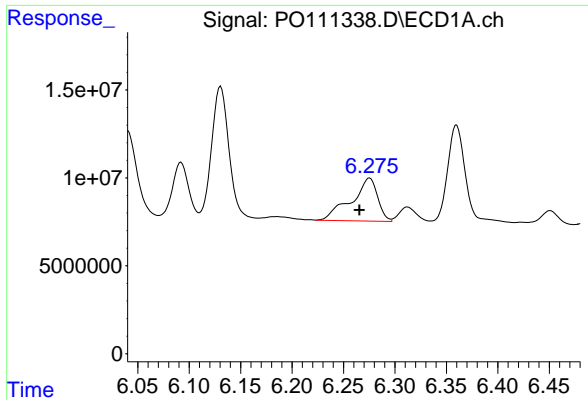
#30 AR-1254-5

R.T.: 6.779 min  
Delta R.T.: -0.005 min  
Response: 21059569  
Conc: 44.39 ng/ml



#30 AR-1254-5

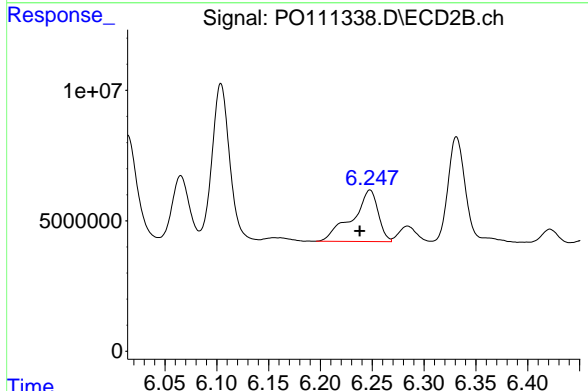
R.T.: 6.748 min  
Delta R.T.: -0.004 min  
Response: 13846453  
Conc: 40.03 ng/ml



#31 AR-1260-1

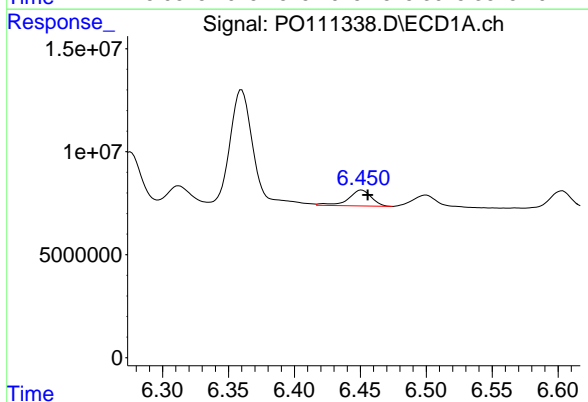
R.T.: 6.275 min  
 Delta R.T.: 0.010 min  
 Response: 43521866  
 Conc: 142.71 ng/ml

Instrument :  
 ECD\_O  
 ClientSampleId :  
 AR1248CCC500



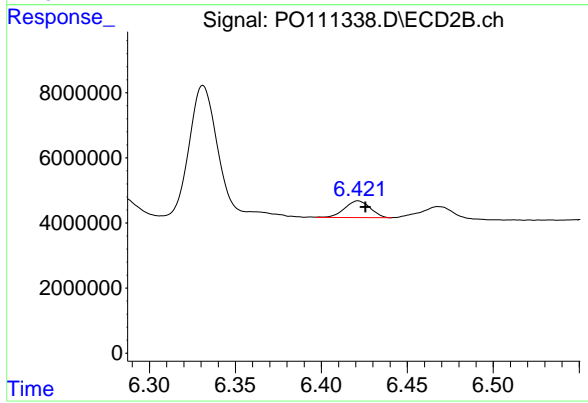
#31 AR-1260-1

R.T.: 6.248 min  
 Delta R.T.: 0.010 min  
 Response: 34206308  
 Conc: 136.89 ng/ml



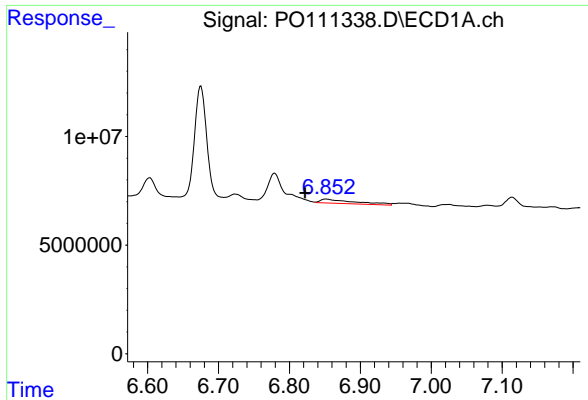
#32 AR-1260-2

R.T.: 6.451 min  
 Delta R.T.: -0.005 min  
 Response: 9359579  
 Conc: 24.44 ng/ml



#32 AR-1260-2

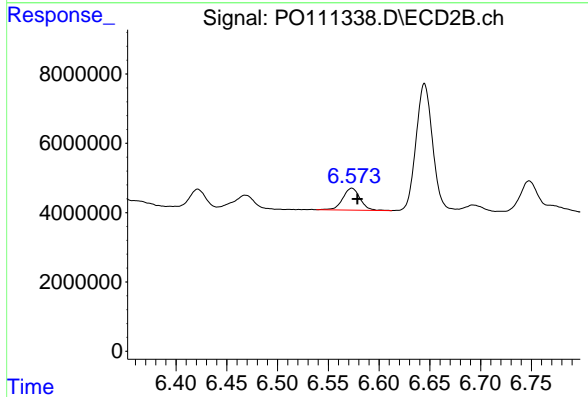
R.T.: 6.421 min  
 Delta R.T.: -0.004 min  
 Response: 5278459  
 Conc: 17.94 ng/ml



#33 AR-1260-3

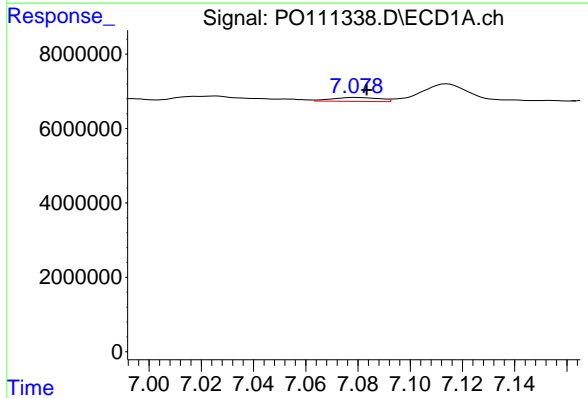
R.T.: 6.852 min  
 Delta R.T.: 0.030 min  
 Response: 6690991  
 Conc: 19.19 ng/ml

Instrument :  
 ECD\_O  
 ClientSampleId :  
 AR1248CCC500



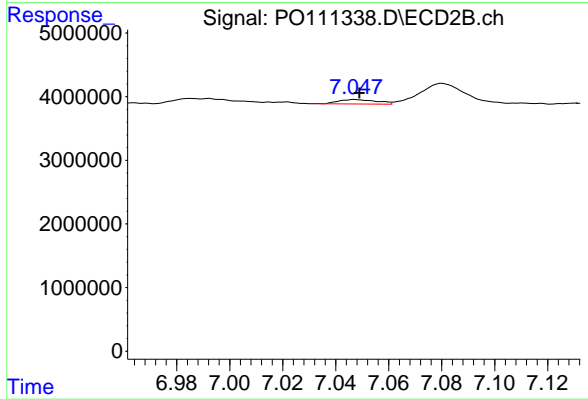
#33 AR-1260-3

R.T.: 6.573 min  
 Delta R.T.: -0.005 min  
 Response: 7541054  
 Conc: 26.30 ng/ml



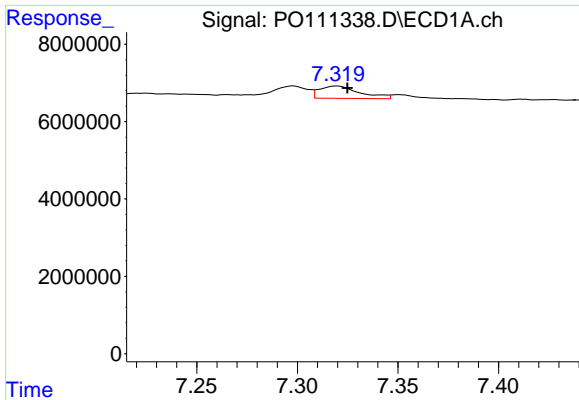
#34 AR-1260-4

R.T.: 7.079 min  
 Delta R.T.: -0.004 min  
 Response: 1338145  
 Conc: 4.78 ng/ml



#34 AR-1260-4

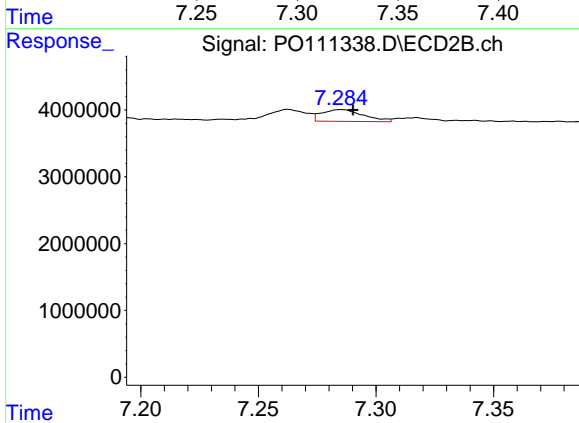
R.T.: 7.047 min  
 Delta R.T.: -0.002 min  
 Response: 703815  
 Conc: 3.51 ng/ml



#35 AR-1260-5

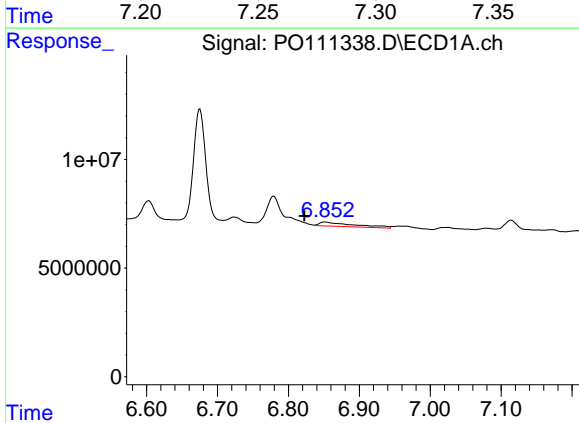
R.T.: 7.320 min  
 Delta R.T.: -0.005 min  
 Response: 4446298  
 Conc: 6.18 ng/ml

Instrument :  
 ECD\_O  
 ClientSampleId :  
 AR1248CCC500



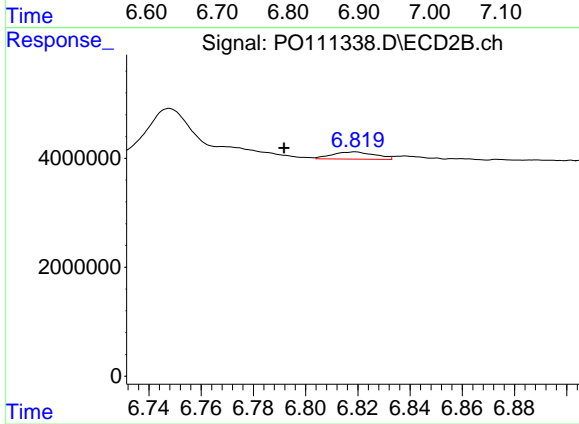
#35 AR-1260-5

R.T.: 7.285 min  
 Delta R.T.: -0.005 min  
 Response: 2165579  
 Conc: 4.71 ng/ml



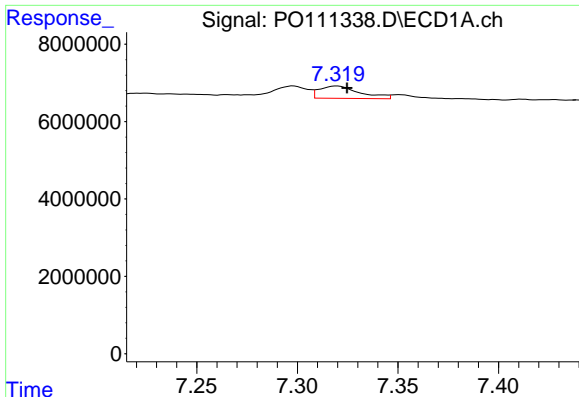
#36 AR-1262-1

R.T.: 6.852 min  
 Delta R.T.: 0.029 min  
 Response: 6690991  
 Conc: 13.75 ng/ml



#36 AR-1262-1

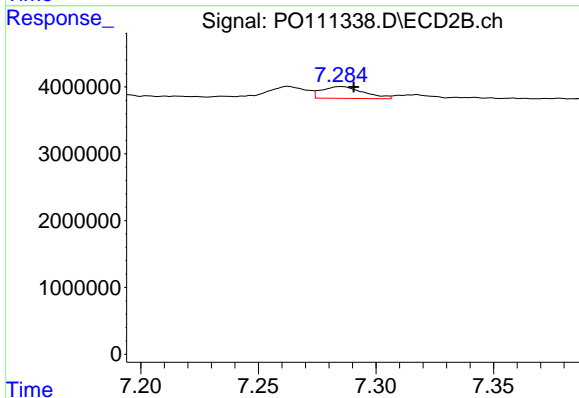
R.T.: 6.819 min  
 Delta R.T.: 0.027 min  
 Response: 1509705  
 Conc: 4.43 ng/ml



#37 AR-1262-2

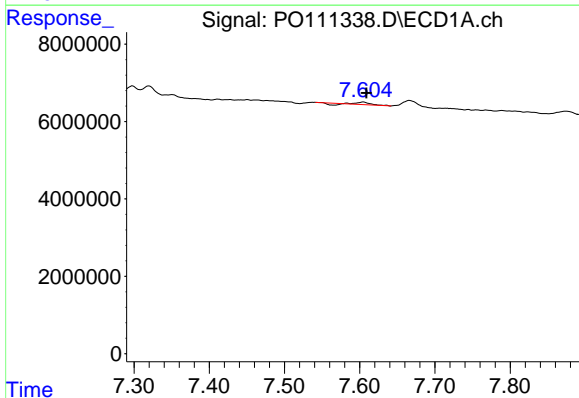
R.T.: 7.320 min  
 Delta R.T.: -0.005 min  
 Response: 4446298  
 Conc: 5.50 ng/ml

Instrument :  
 ECD\_O  
 ClientSampleId :  
 AR1248CCC500



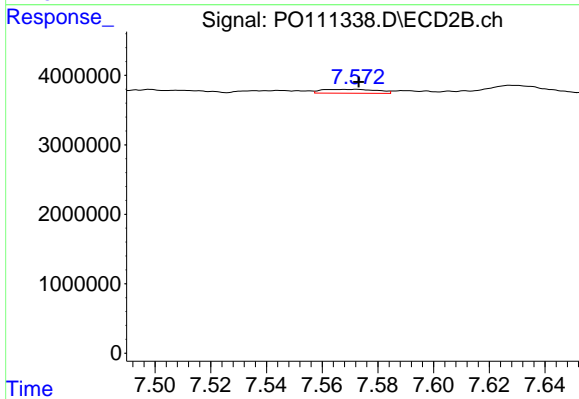
#37 AR-1262-2

R.T.: 7.285 min  
 Delta R.T.: -0.005 min  
 Response: 2165579  
 Conc: 4.31 ng/ml



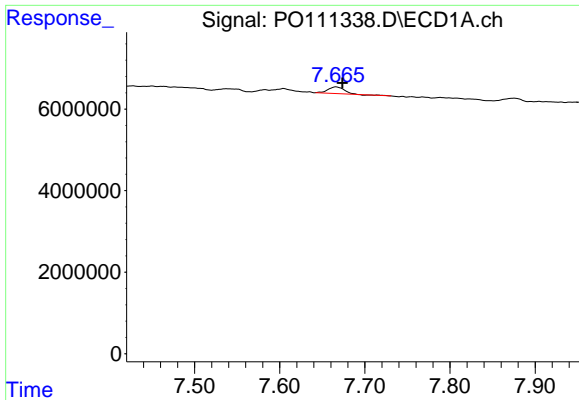
#38 AR-1262-3

R.T.: 7.605 min  
 Delta R.T.: -0.004 min  
 Response: 524425  
 Conc: 1.55 ng/ml



#38 AR-1262-3

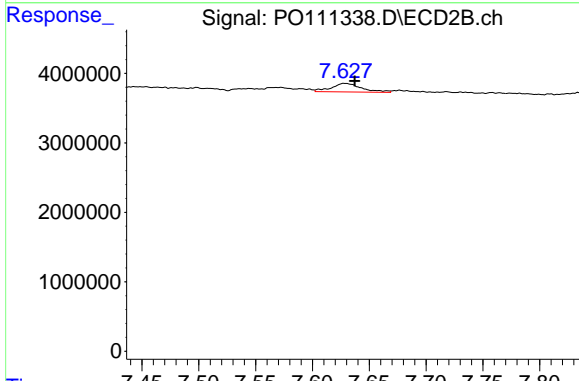
R.T.: 7.572 min  
 Delta R.T.: -0.001 min  
 Response: 767933  
 Conc: 4.09 ng/ml



#39 AR-1262-4

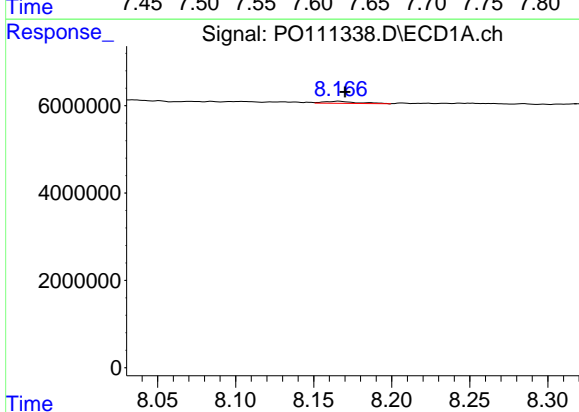
R.T.: 7.666 min  
 Delta R.T.: -0.007 min  
 Response: 2098042  
 Conc: 3.55 ng/ml

Instrument :  
 ECD\_O  
 ClientSampleId :  
 AR1248CCC500



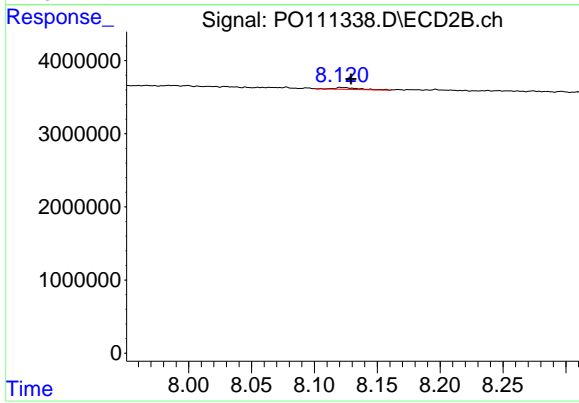
#39 AR-1262-4

R.T.: 7.628 min  
 Delta R.T.: -0.009 min  
 Response: 2314374  
 Conc: 7.01 ng/ml



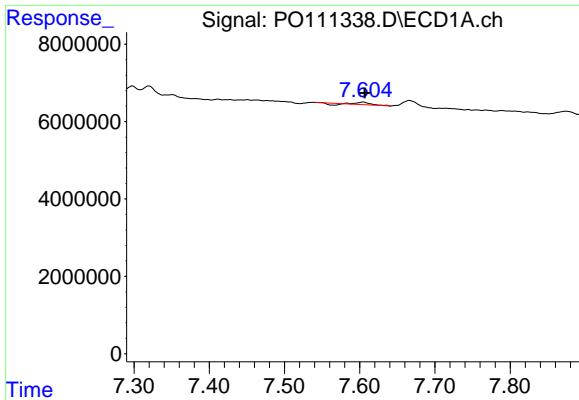
#40 AR-1262-5

R.T.: 8.166 min  
 Delta R.T.: -0.004 min  
 Response: 677096  
 Conc: 2.37 ng/ml



#40 AR-1262-5

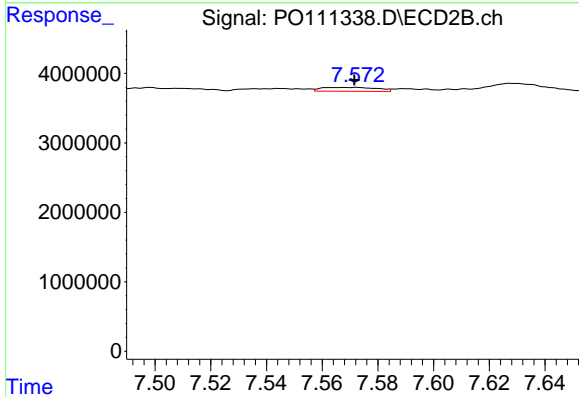
R.T.: 8.121 min  
 Delta R.T.: -0.008 min  
 Response: 304156  
 Conc: 2.71 ng/ml



#41 AR-1268-1

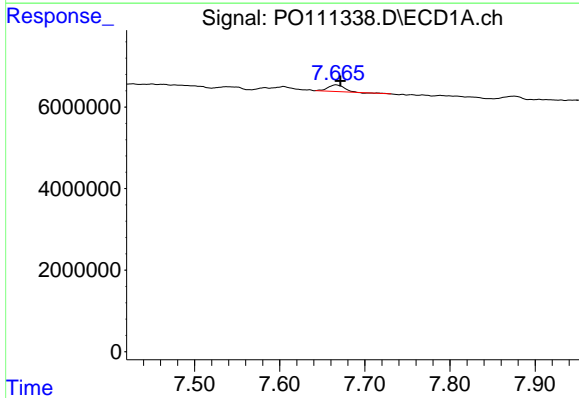
R.T.: 7.605 min  
 Delta R.T.: -0.002 min  
 Response: 524425  
 Conc: 0.54 ng/ml

Instrument :  
 ECD\_O  
 ClientSampleId :  
 AR1248CCC500



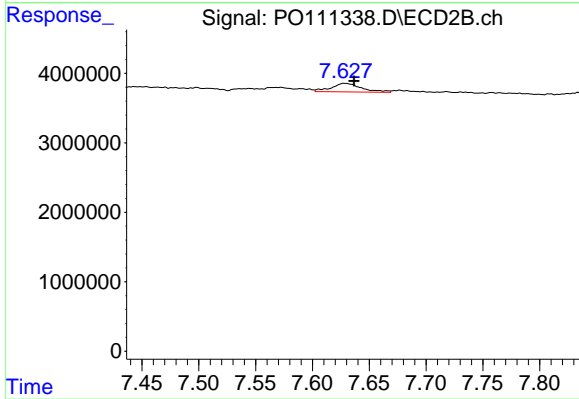
#41 AR-1268-1

R.T.: 7.572 min  
 Delta R.T.: 0.000 min  
 Response: 767933  
 Conc: 1.45 ng/ml



#42 AR-1268-2

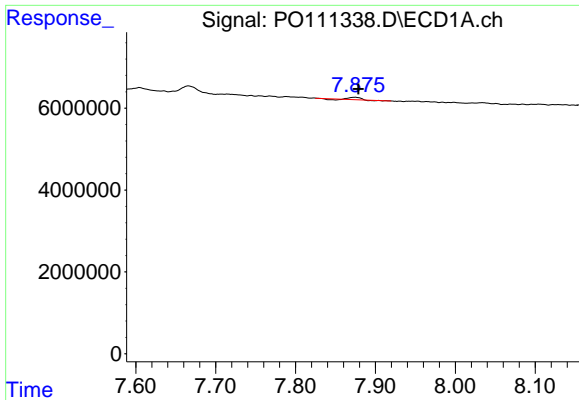
R.T.: 7.666 min  
 Delta R.T.: -0.005 min  
 Response: 2098042  
 Conc: 2.35 ng/ml



#42 AR-1268-2

R.T.: 7.628 min  
 Delta R.T.: -0.008 min  
 Response: 2314374  
 Conc: 4.80 ng/ml

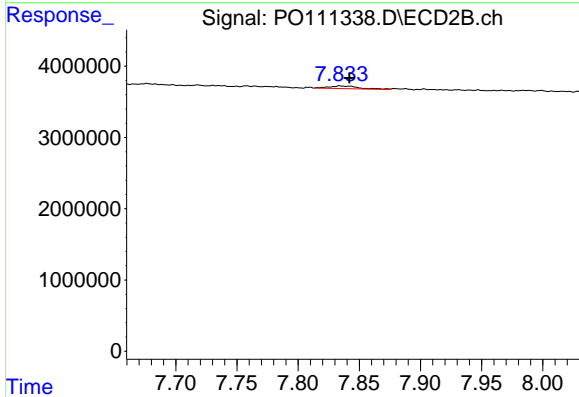




#43 AR-1268-3

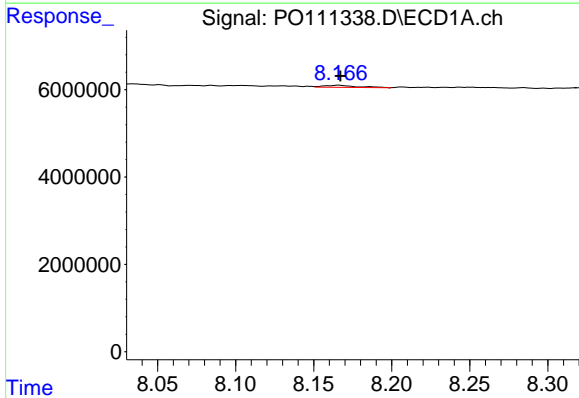
R.T.: 7.875 min  
 Delta R.T.: -0.004 min  
 Response: 279337  
 Conc: 0.37 ng/ml

Instrument :  
 ECD\_O  
 ClientSampleId :  
 AR1248CCC500



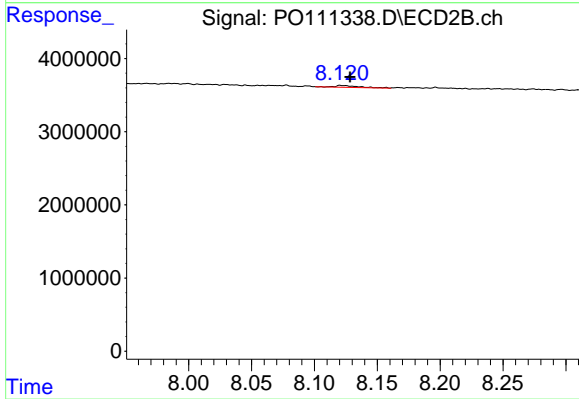
#43 AR-1268-3

R.T.: 7.834 min  
 Delta R.T.: -0.008 min  
 Response: 641124  
 Conc: 1.84 ng/ml



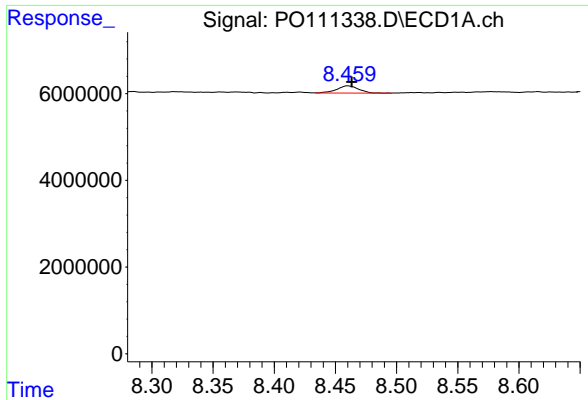
#44 AR-1268-4

R.T.: 8.166 min  
 Delta R.T.: 0.000 min  
 Response: 677096  
 Conc: 2.07 ng/ml



#44 AR-1268-4

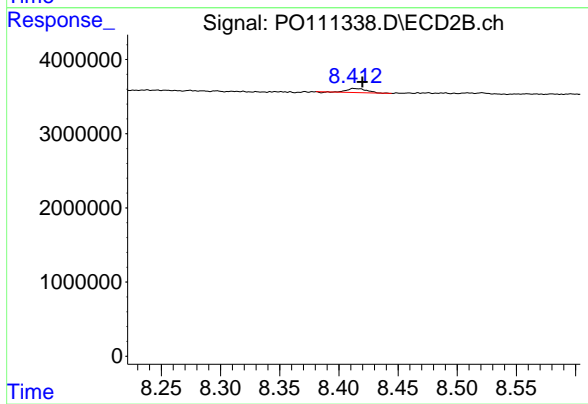
R.T.: 8.121 min  
 Delta R.T.: -0.007 min  
 Response: 304156  
 Conc: 2.39 ng/ml



#45 AR-1268-5

R.T.: 8.461 min  
Delta R.T.: -0.003 min  
Response: 2064933  
Conc: 0.96 ng/ml

Instrument :  
ECD\_O  
ClientSampleId :  
AR1248CCC500



#45 AR-1268-5

R.T.: 8.413 min  
Delta R.T.: -0.007 min  
Response: 623005  
Conc: 0.83 ng/ml