

Data Path : Z:\pestpcbsrv\HPCHEM1\ECD_0\Data\P0052925\
 Data File : PO111341.D
 Signal(s) : Signal #1: ECD1A.ch Signal #2: ECD2B.ch
 Acq On : 29 May 2025 18:51
 Operator : YP/AJ
 Sample : Q2154-07 10X
 Misc :
 ALS Vial : 17 Sample Multiplier: 1

Instrument :
 ECD_0
 ClientSampleId :
 BC278406-2-1

Integration File signal 1: autoint1.e
 Integration File signal 2: autoint2.e
 Quant Time: May 29 22:48:39 2025
 Quant Method : Z:\pestpcbsrv\HPCHEM1\ECD_0\methods\P0051525.M
 Quant Title : GC EXTRACTABLES
 QLast Update : Thu May 15 07:11:53 2025
 Response via : Initial Calibration
 Integrator: ChemStation

Volume Inj. : 2 µl
 Signal #1 Phase : ZB-MR1 Signal #2 Phase: ZB-MR2
 Signal #1 Info : 30Mx0.32mmx 0.50µ Signal #2 Info : 30M x 0.32mm x 0.25µm

Compound	RT#1	RT#2	Resp#1	Resp#2	ng/ml	ng/ml

System Monitoring Compounds						
1) SA Tetrachlo...	3.681	3.677	9600183	9961223	1.632	1.827
2) SA Decachlor...	8.721	8.670	6160939	2519287	1.193	1.362
Target Compounds						
3) L1 AR-1016-1	4.787	4.757	1494922	246319	6.642	1.290 #
4) L1 AR-1016-2	4.787	4.774	1494922	234312	4.687	0.846 #
5) L1 AR-1016-3	4.842	4.937	586225	323841	2.700	2.217
6) L1 AR-1016-4	4.958	4.993	1285866	240115	7.384	1.999 #
7) L1 AR-1016-5	5.194	5.197	70246	403401	0.399	2.613 #
8) L2 AR-1221-1	3.905	3.867	2779955	1736806	31.914	23.520 #
9) L2 AR-1221-2	3.995	3.986	2467270	725753	38.730	13.338 #
10) L2 AR-1221-3	4.052	4.050	2080925	708303	10.820	4.239 #
11) L3 AR-1232-1	4.052	4.050	2080925	708303	13.585	5.424 #
12) L3 AR-1232-2	4.557	4.774	901509	234312	11.001	1.786 #
13) L3 AR-1232-3	4.787	4.937	1494922	323841	9.775	4.757 #
14) L3 AR-1232-4	4.958	5.046	1285866	409242	15.633	6.635 #
15) L3 AR-1232-5	5.015	5.197	469786	403401	8.658	6.137 #
16) L4 AR-1242-1	4.787	4.757	1494922	246319	7.819	1.529 #
17) L4 AR-1242-2	4.787	4.774	1494922	234312	5.496	0.999 #
18) L4 AR-1242-3	4.842	4.937	586225	323841	3.152	2.620
19) L4 AR-1242-4	4.958	5.046	1285866	409242	8.700	3.311 #
20) L4 AR-1242-5	5.625	5.553	1970003	860193	12.665	5.660 #
21) L5 AR-1248-1	4.787	4.757	1494922	246319	9.760	1.899 #
22) L5 AR-1248-2	5.015	4.993	469786	240115	2.343	1.365 #
23) L5 AR-1248-3	5.194	5.046	70246	409242	0.274	2.181 #
24) L5 AR-1248-4	5.574	5.197	2417639	403401	6.675	1.835 #
25) L5 AR-1248-5	5.625	5.606	1970003	735203	7.518	3.367 #
26) L6 AR-1254-1	5.574	5.553	2417639	860193	6.369	2.655 #
27) L6 AR-1254-2	5.725	5.702	2427323	996530	7.428	3.518 #
28) L6 AR-1254-3	6.131	6.103	3439821	1192917	6.538	2.765 #
29) L6 AR-1254-4	6.354	6.333	2120439	531772	6.309	2.150 #
30) L6 AR-1254-5	6.783	6.749	2872908	899354	6.055	2.600 #
31) L7 AR-1260-1	6.254	6.233	709195	318581	2.325	1.275 #
32) L7 AR-1260-2	6.451	6.425	734163	318435	1.917	1.082 #
33) L7 AR-1260-3	6.821	6.572	1557065	1041844	4.467	3.634
34) L7 AR-1260-4	7.075	7.050	2251392	966362	8.042	4.813 #
35) L7 AR-1260-5	7.335	7.313	794969	785516	1.104	1.709 #
36) L8 AR-1262-1	6.821	6.773	1557065	669293	3.199	1.964 #
37) L8 AR-1262-2	7.335	7.313	794969	785516	0.983	1.562 #
38) L8 AR-1262-3	7.635	7.567	61621	271441	0.182	1.447 #
39) L8 AR-1262-4	7.671	7.634	352917	519858	0.598	1.574 #
40) L8 AR-1262-5	8.161	8.146	364890	115507	1.279	1.029
41) L9 AR-1268-1	7.635	7.567	61621	271441	0.064	0.512 #

Data Path : Z:\pestpcbsrv\HPCHEM1\ECD_0\Data\P0052925\
 Data File : P0111341.D
 Signal(s) : Signal #1: ECD1A.ch Signal #2: ECD2B.ch
 Acq On : 29 May 2025 18:51
 Operator : YP/AJ
 Sample : Q2154-07 10X
 Misc :
 ALS Vial : 17 Sample Multiplier: 1

Instrument :
 ECD_0
 ClientSampleId :
 BC278406-2-1

Integration File signal 1: autoint1.e
 Integration File signal 2: autoint2.e
 Quant Time: May 29 22:48:39 2025
 Quant Method : Z:\pestpcbsrv\HPCHEM1\ECD_0\methods\P0051525.M
 Quant Title : GC EXTRACTABLES
 QLast Update : Thu May 15 07:11:53 2025
 Response via : Initial Calibration
 Integrator: ChemStation

Volume Inj. : 2 µl
 Signal #1 Phase : ZB-MR1 Signal #2 Phase: ZB-MR2
 Signal #1 Info : 30Mx0.32mmx 0.50µ Signal #2 Info : 30M x 0.32mm x 0.25µm

	Compound	RT#1	RT#2	Resp#1	Resp#2	ng/ml	ng/ml
42)	L9 AR-1268-2	7.671	7.634	352917	519858	0.395	1.078 #
43)	L9 AR-1268-3	7.877	7.839	981895	533006	1.294	1.530
44)	L9 AR-1268-4	8.161	8.146	364890	115507	1.117	0.908
45)	L9 AR-1268-5	8.466	8.425	1664333	-44867	0.771	N.D. #

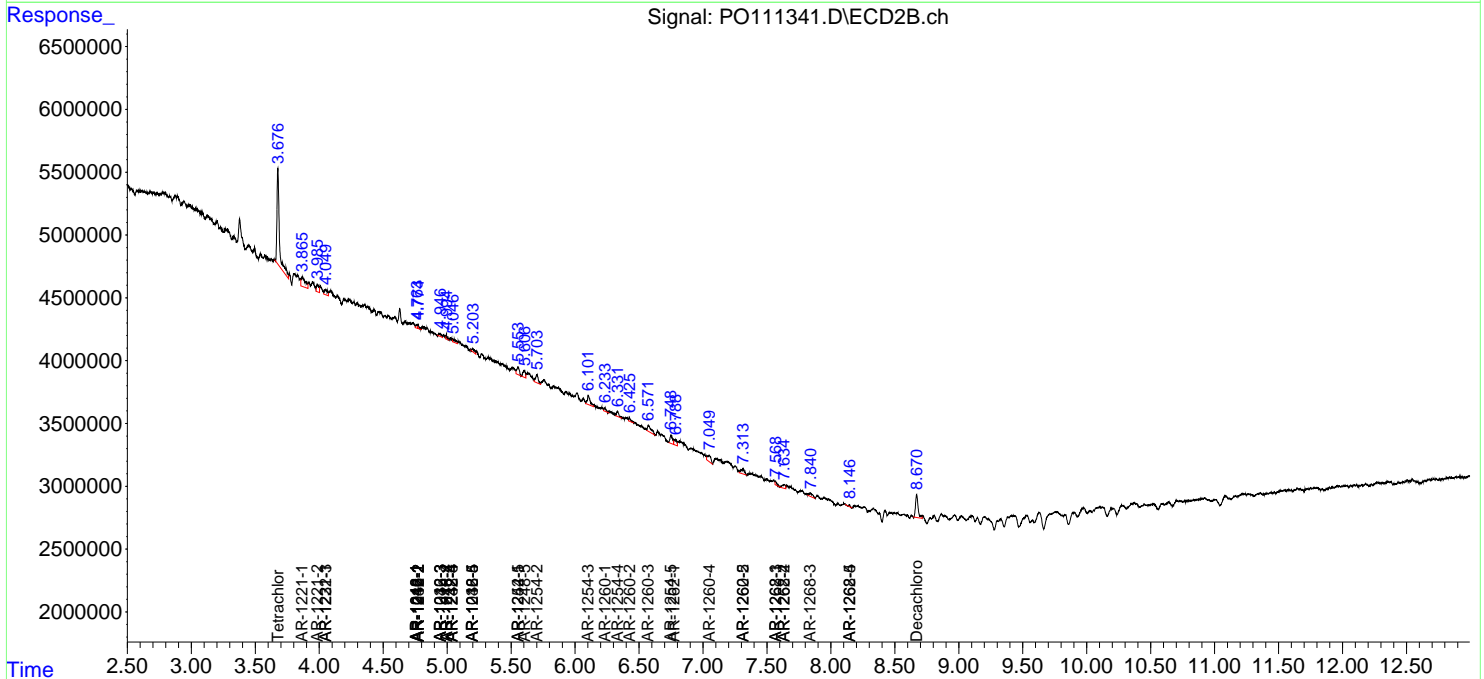
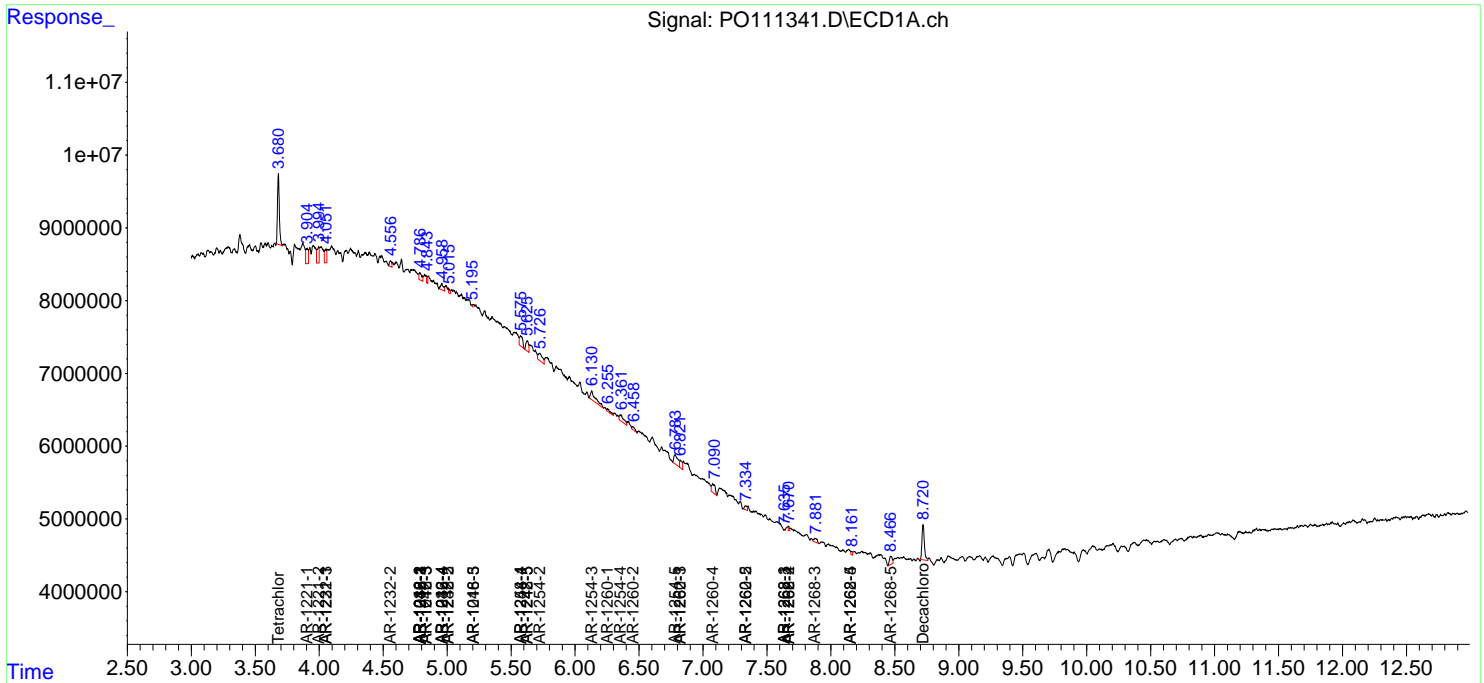
(f)=RT Delta > 1/2 Window (#)=Amounts differ by > 25% (m)=manual int.

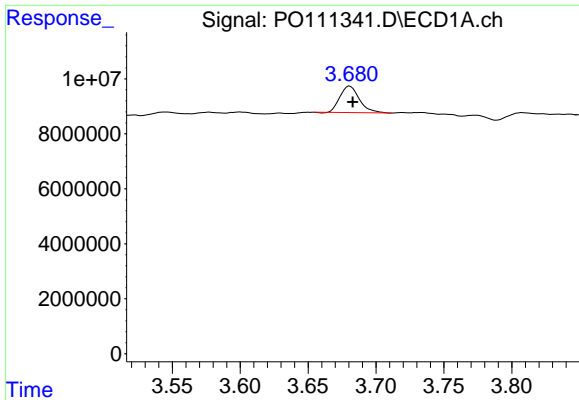
Data Path : Z:\pestpcbsrv\HPCHEM1\ECD_O\Data\P0052925\
 Data File : P0111341.D
 Signal(s) : Signal #1: ECD1A.ch Signal #2: ECD2B.ch
 Acq On : 29 May 2025 18:51
 Operator : YP/AJ
 Sample : Q2154-07 10X
 Misc :
 ALS Vial : 17 Sample Multiplier: 1

Instrument :
 ECD_O
 ClientSampleId :
 BC278406-2-1

Integration File signal 1: autoint1.e
 Integration File signal 2: autoint2.e
 Quant Time: May 29 22:48:39 2025
 Quant Method : Z:\pestpcbsrv\HPCHEM1\ECD_O\methods\P0051525.M
 Quant Title : GC EXTRACTABLES
 QLast Update : Thu May 15 07:11:53 2025
 Response via : Initial Calibration
 Integrator: ChemStation

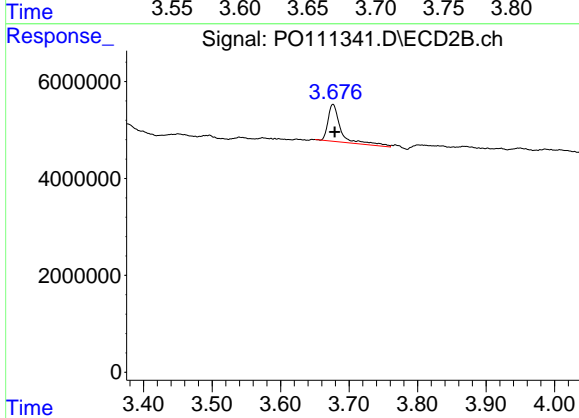
Volume Inj. : 2 µl
 Signal #1 Phase : ZB-MR1 Signal #2 Phase: ZB-MR2
 Signal #1 Info : 30Mx0.32mmx 0.50µ Signal #2 Info : 30M x 0.32mm x 0.25µm



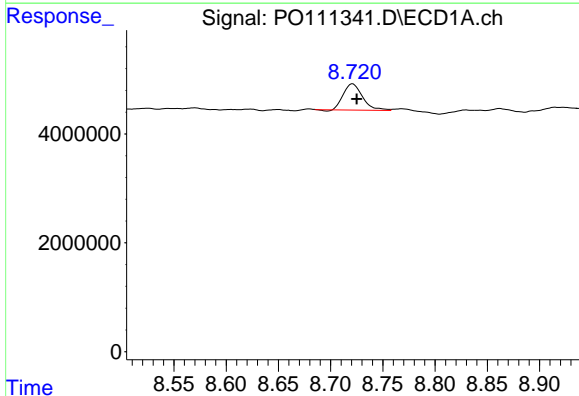


#1 Tetrachloro-m-xylene
 R.T.: 3.681 min
 Delta R.T.: -0.002 min
 Response: 9600183
 Conc: 1.63 ng/ml

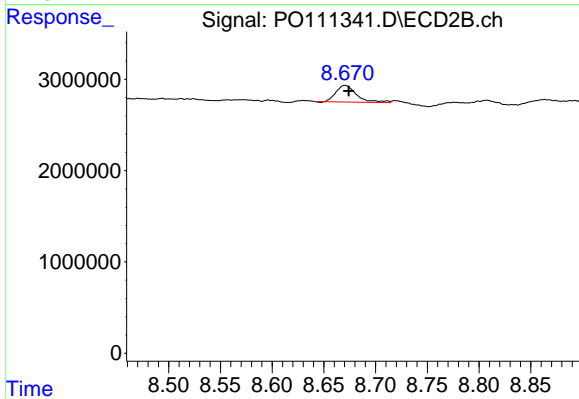
Instrument :
 ECD_O
 ClientSampleId :
 BC278406-2-1



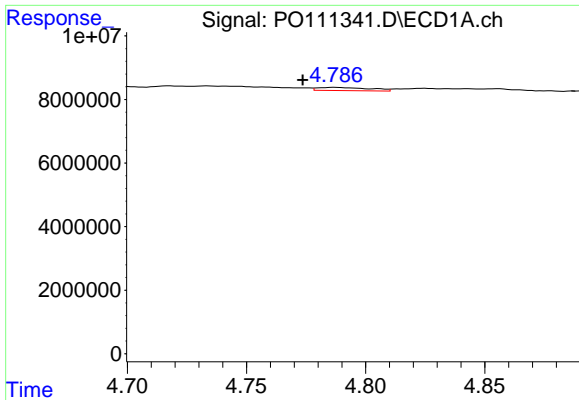
#1 Tetrachloro-m-xylene
 R.T.: 3.677 min
 Delta R.T.: -0.002 min
 Response: 9961223
 Conc: 1.83 ng/ml



#2 Decachlorobiphenyl
 R.T.: 8.721 min
 Delta R.T.: -0.004 min
 Response: 6160939
 Conc: 1.19 ng/ml



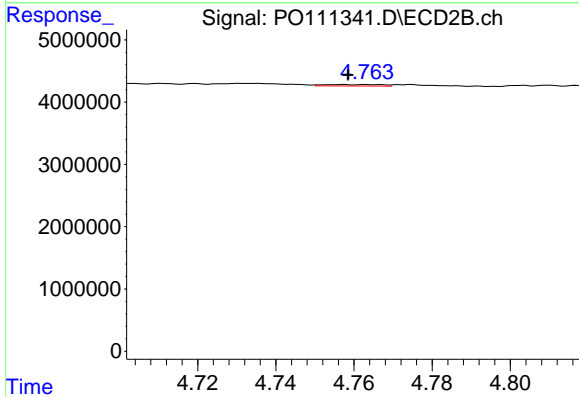
#2 Decachlorobiphenyl
 R.T.: 8.670 min
 Delta R.T.: -0.004 min
 Response: 2519287
 Conc: 1.36 ng/ml



#3 AR-1016-1

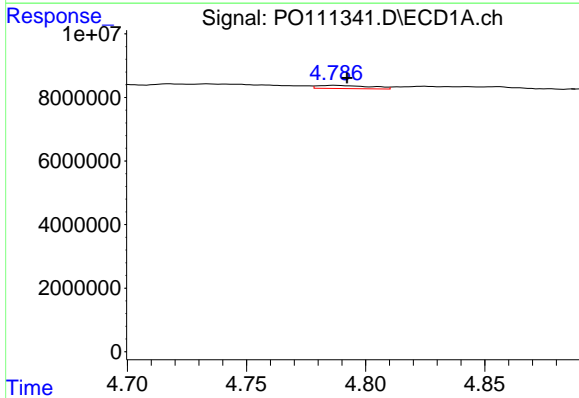
R.T.: 4.787 min
Delta R.T.: 0.014 min
Response: 1494922
Conc: 6.64 ng/ml

Instrument :
ECD_O
ClientSampleId :
BC278406-2-1



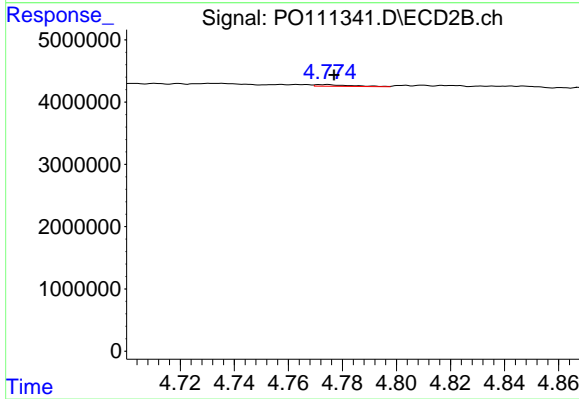
#3 AR-1016-1

R.T.: 4.757 min
Delta R.T.: -0.001 min
Response: 246319
Conc: 1.29 ng/ml



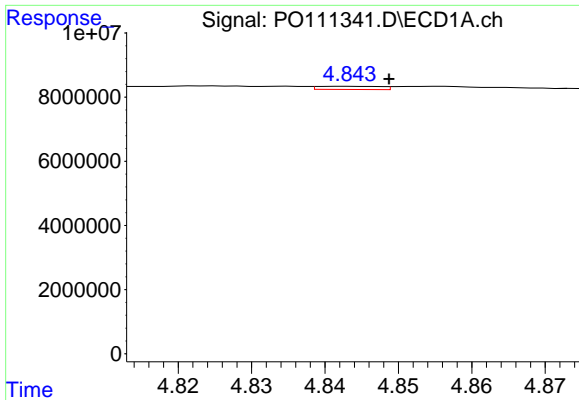
#4 AR-1016-2

R.T.: 4.787 min
Delta R.T.: -0.005 min
Response: 1494922
Conc: 4.69 ng/ml



#4 AR-1016-2

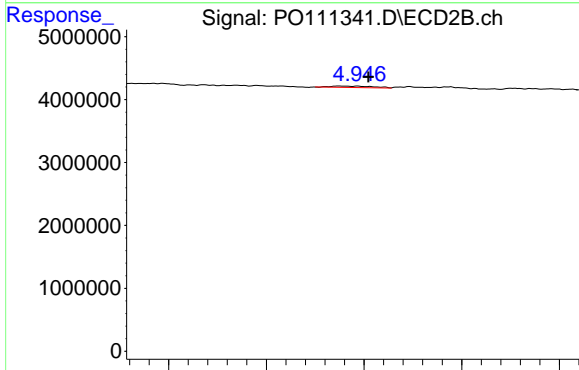
R.T.: 4.774 min
Delta R.T.: -0.003 min
Response: 234312
Conc: 0.85 ng/ml



#5 AR-1016-3

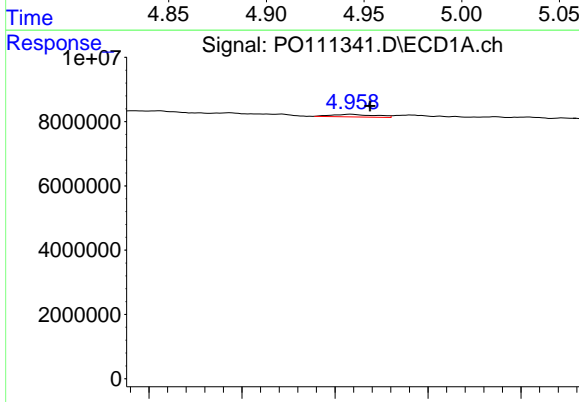
R.T.: 4.842 min
 Delta R.T.: -0.006 min
 Response: 586225
 Conc: 2.70 ng/ml

Instrument :
 ECD_O
 ClientSampleId :
 BC278406-2-1



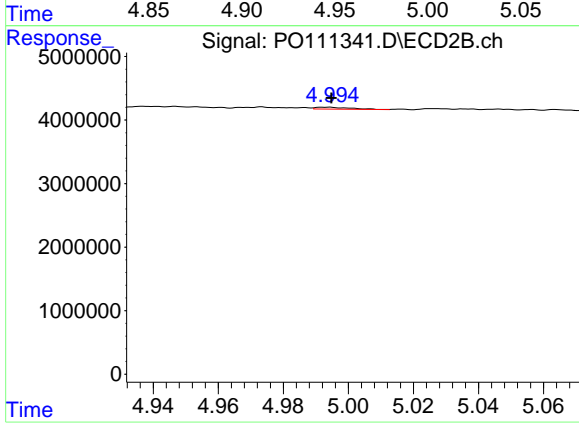
#5 AR-1016-3

R.T.: 4.937 min
 Delta R.T.: -0.015 min
 Response: 323841
 Conc: 2.22 ng/ml



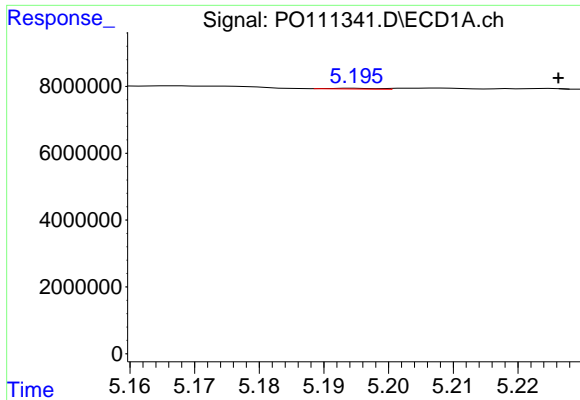
#6 AR-1016-4

R.T.: 4.958 min
 Delta R.T.: -0.010 min
 Response: 1285866
 Conc: 7.38 ng/ml



#6 AR-1016-4

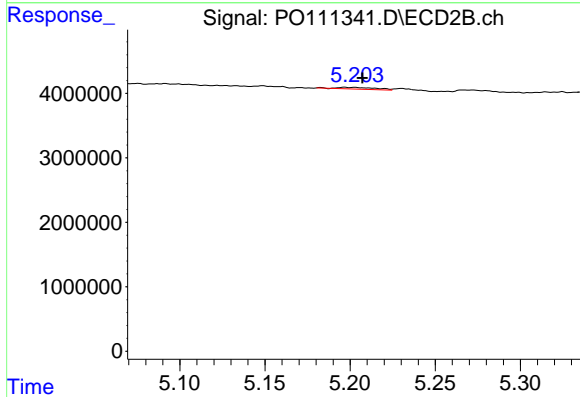
R.T.: 4.993 min
 Delta R.T.: -0.001 min
 Response: 240115
 Conc: 2.00 ng/ml



#7 AR-1016-5

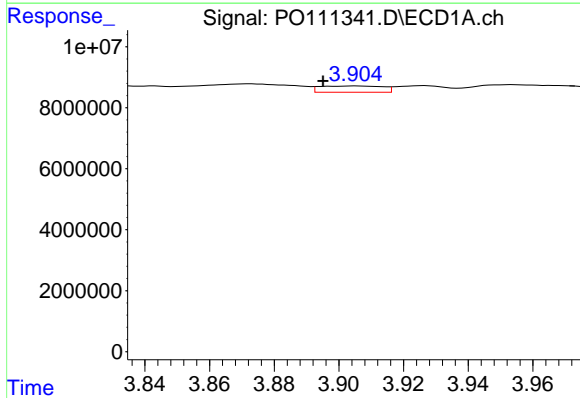
R.T.: 5.194 min
 Delta R.T.: -0.032 min
 Response: 70246
 Conc: 0.40 ng/ml

Instrument :
 ECD_O
 ClientSampleId :
 BC278406-2-1



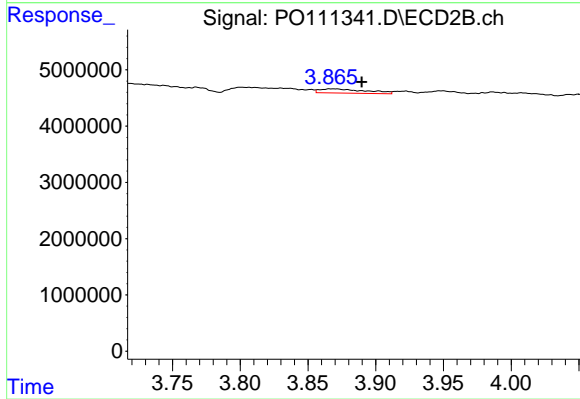
#7 AR-1016-5

R.T.: 5.197 min
 Delta R.T.: -0.011 min
 Response: 403401
 Conc: 2.61 ng/ml



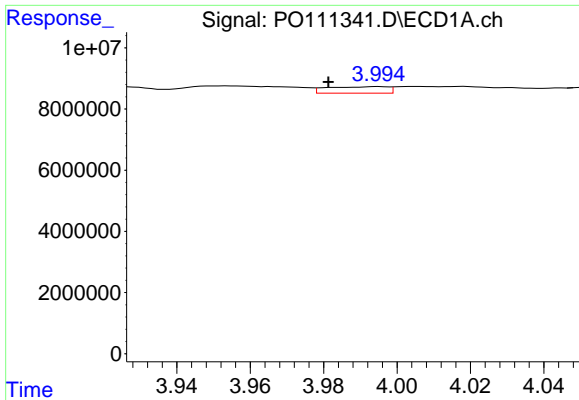
#8 AR-1221-1

R.T.: 3.905 min
 Delta R.T.: 0.010 min
 Response: 2779955
 Conc: 31.91 ng/ml



#8 AR-1221-1

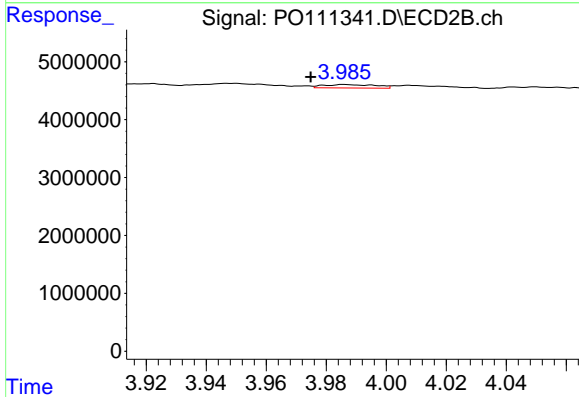
R.T.: 3.867 min
 Delta R.T.: -0.023 min
 Response: 1736806
 Conc: 23.52 ng/ml



#9 AR-1221-2

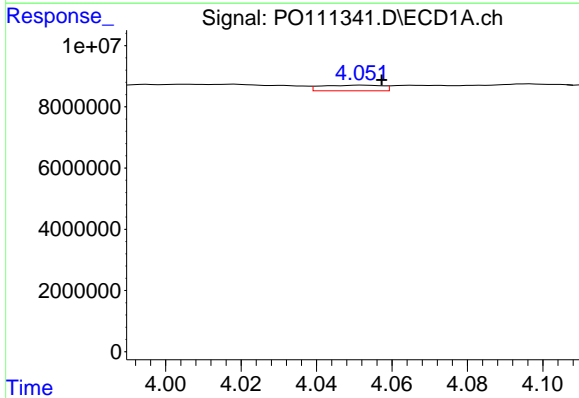
R.T.: 3.995 min
 Delta R.T.: 0.014 min
 Response: 2467270
 Conc: 38.73 ng/ml

Instrument :
 ECD_O
 ClientSampleId :
 BC278406-2-1



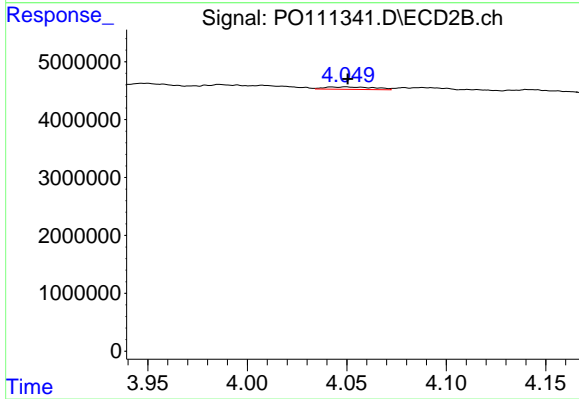
#9 AR-1221-2

R.T.: 3.986 min
 Delta R.T.: 0.011 min
 Response: 725753
 Conc: 13.34 ng/ml



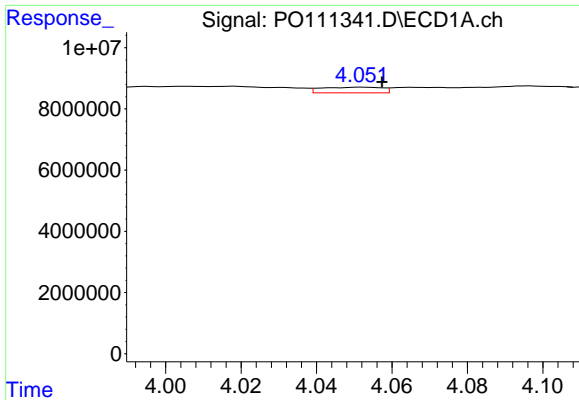
#10 AR-1221-3

R.T.: 4.052 min
 Delta R.T.: -0.005 min
 Response: 2080925
 Conc: 10.82 ng/ml



#10 AR-1221-3

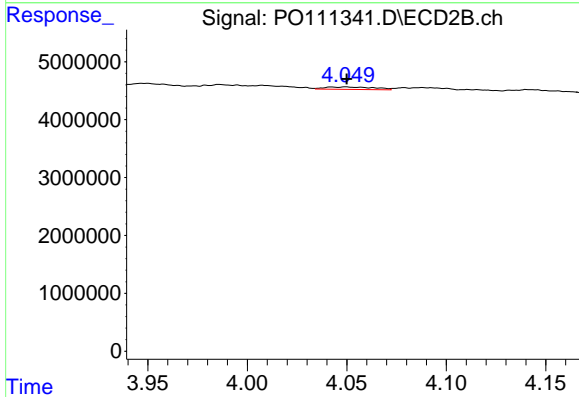
R.T.: 4.050 min
 Delta R.T.: 0.000 min
 Response: 708303
 Conc: 4.24 ng/ml



#11 AR-1232-1

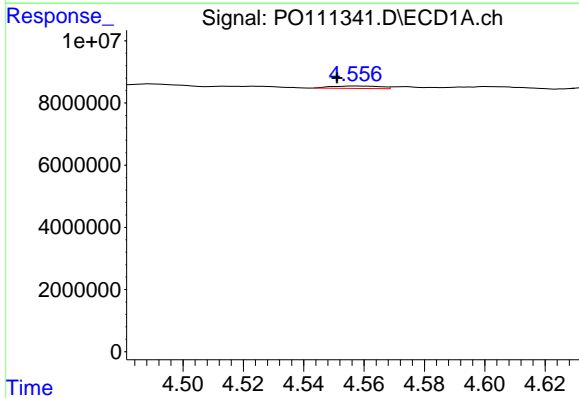
R.T.: 4.052 min
 Delta R.T.: -0.005 min
 Response: 2080925
 Conc: 13.59 ng/ml

Instrument :
 ECD_O
 ClientSampleId :
 BC278406-2-1



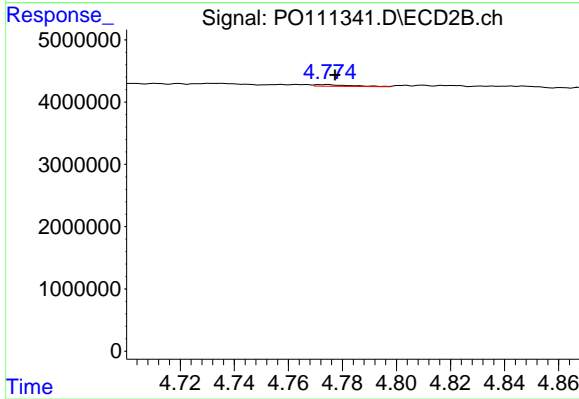
#11 AR-1232-1

R.T.: 4.050 min
 Delta R.T.: 0.000 min
 Response: 708303
 Conc: 5.42 ng/ml



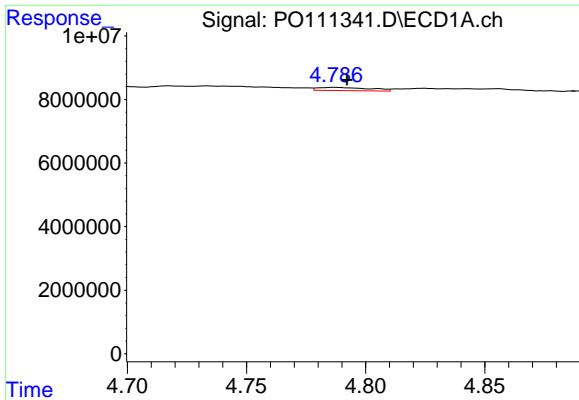
#12 AR-1232-2

R.T.: 4.557 min
 Delta R.T.: 0.006 min
 Response: 901509
 Conc: 11.00 ng/ml



#12 AR-1232-2

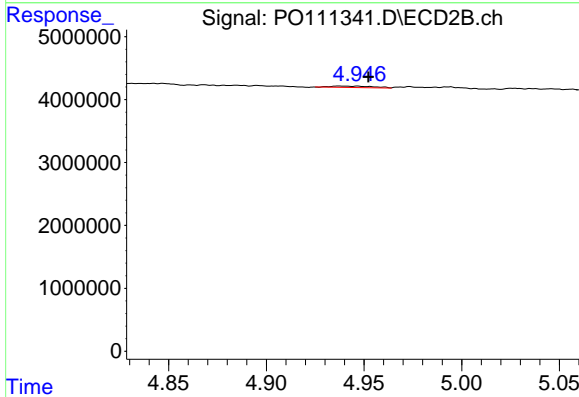
R.T.: 4.774 min
 Delta R.T.: -0.003 min
 Response: 234312
 Conc: 1.79 ng/ml



#13 AR-1232-3

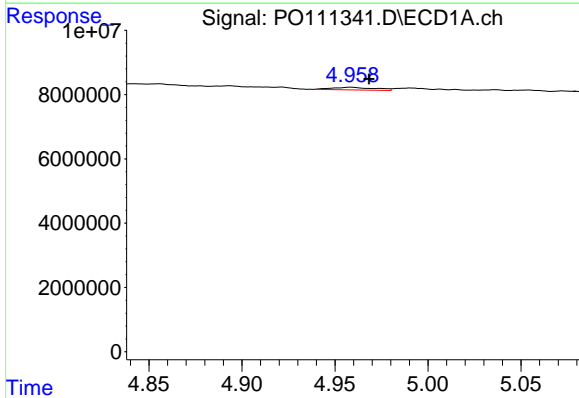
R.T.: 4.787 min
 Delta R.T.: -0.005 min
 Response: 1494922
 Conc: 9.78 ng/ml

Instrument :
 ECD_O
 ClientSampleId :
 BC278406-2-1



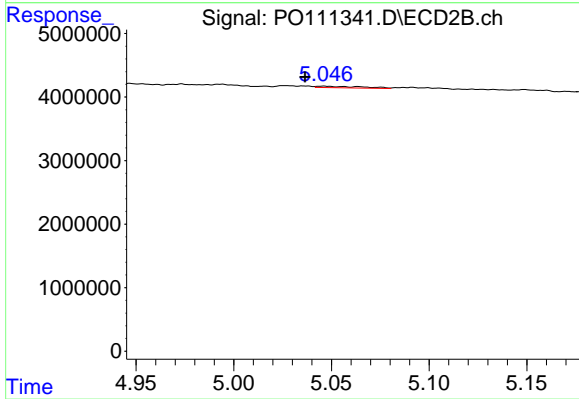
#13 AR-1232-3

R.T.: 4.937 min
 Delta R.T.: -0.015 min
 Response: 323841
 Conc: 4.76 ng/ml



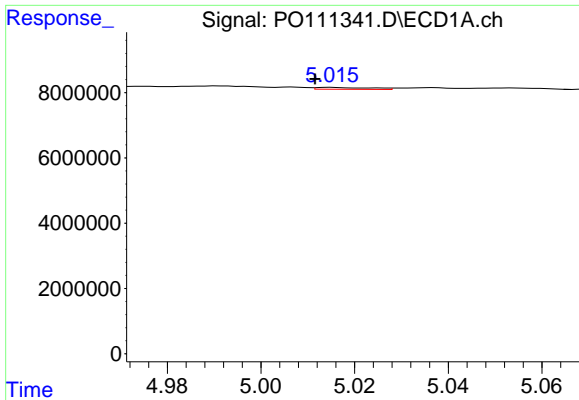
#14 AR-1232-4

R.T.: 4.958 min
 Delta R.T.: -0.010 min
 Response: 1285866
 Conc: 15.63 ng/ml



#14 AR-1232-4

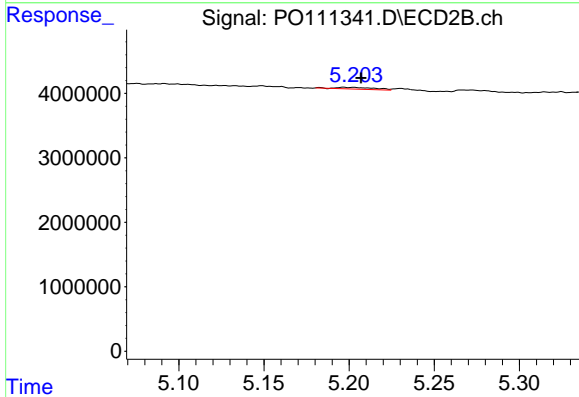
R.T.: 5.046 min
 Delta R.T.: 0.009 min
 Response: 409242
 Conc: 6.64 ng/ml



#15 AR-1232-5

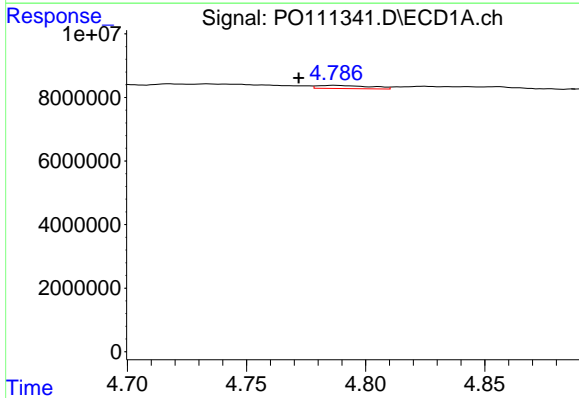
R.T.: 5.015 min
 Delta R.T.: 0.003 min
 Response: 469786
 Conc: 8.66 ng/ml

Instrument :
 ECD_O
 ClientSampleId :
 BC278406-2-1



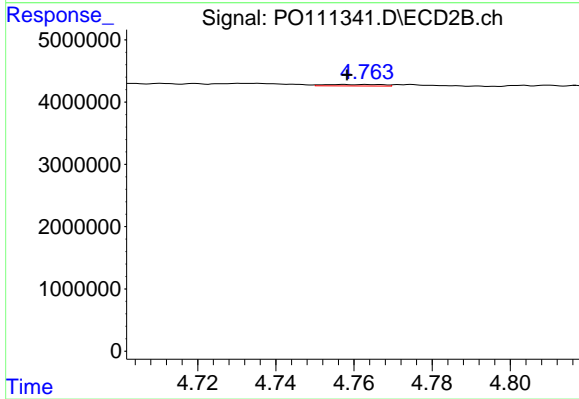
#15 AR-1232-5

R.T.: 5.197 min
 Delta R.T.: -0.010 min
 Response: 403401
 Conc: 6.14 ng/ml



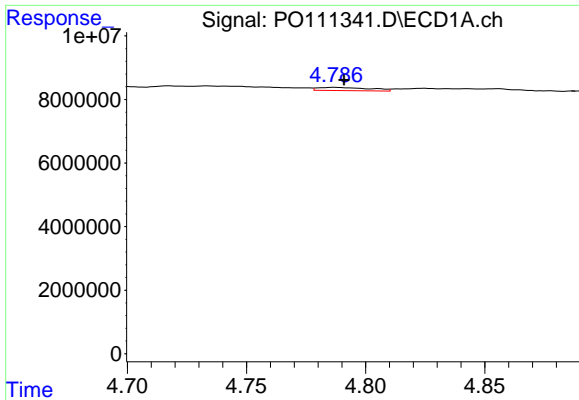
#16 AR-1242-1

R.T.: 4.787 min
 Delta R.T.: 0.015 min
 Response: 1494922
 Conc: 7.82 ng/ml



#16 AR-1242-1

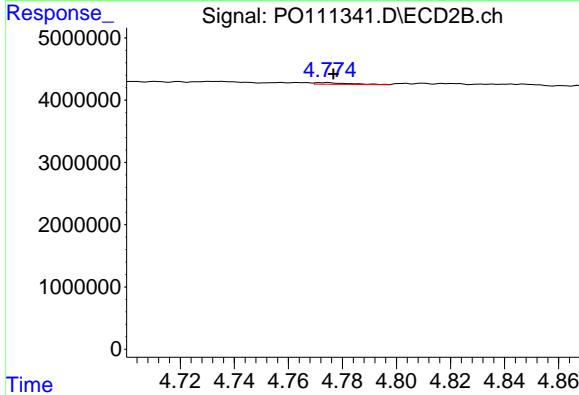
R.T.: 4.757 min
 Delta R.T.: 0.000 min
 Response: 246319
 Conc: 1.53 ng/ml



#17 AR-1242-2

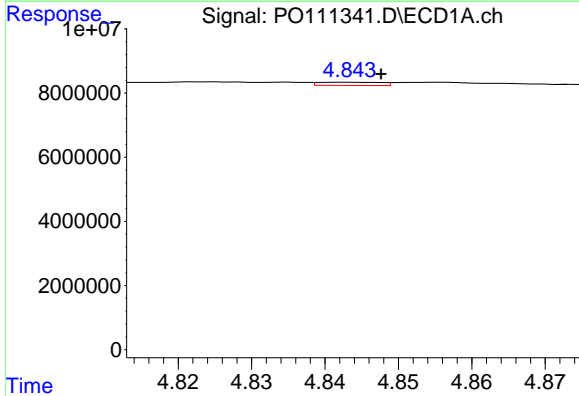
R.T.: 4.787 min
 Delta R.T.: -0.004 min
 Response: 1494922
 Conc: 5.50 ng/ml

Instrument :
 ECD_O
 ClientSampleId :
 BC278406-2-1



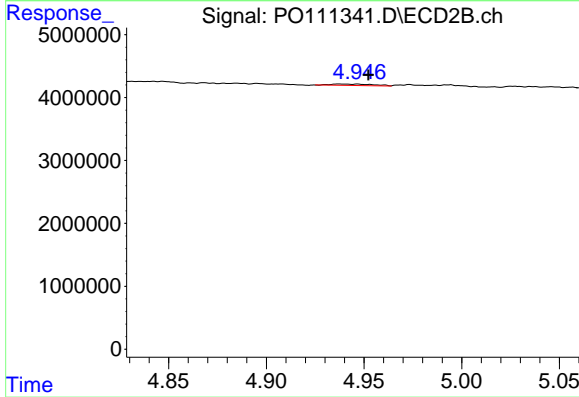
#17 AR-1242-2

R.T.: 4.774 min
 Delta R.T.: -0.003 min
 Response: 234312
 Conc: 1.00 ng/ml



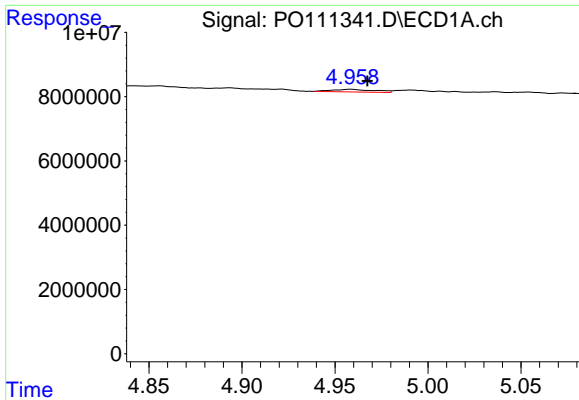
#18 AR-1242-3

R.T.: 4.842 min
 Delta R.T.: -0.005 min
 Response: 586225
 Conc: 3.15 ng/ml



#18 AR-1242-3

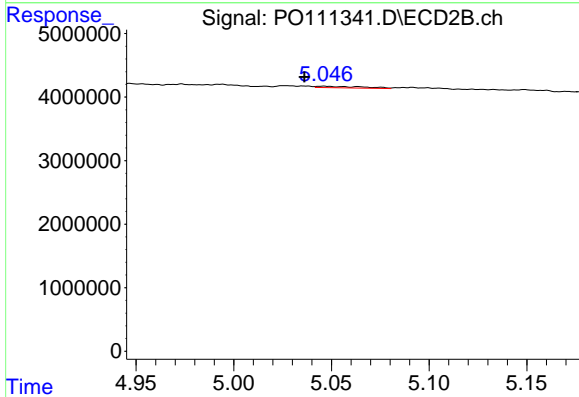
R.T.: 4.937 min
 Delta R.T.: -0.015 min
 Response: 323841
 Conc: 2.62 ng/ml



#19 AR-1242-4

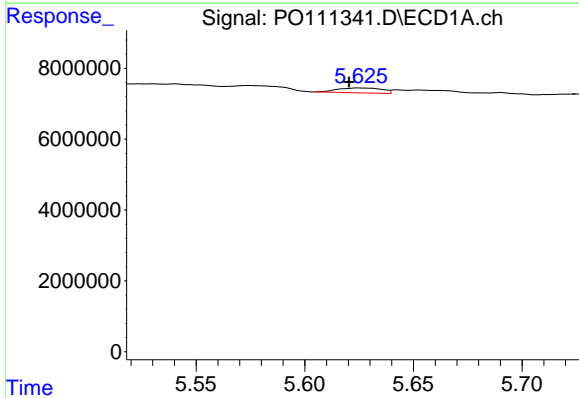
R.T.: 4.958 min
 Delta R.T.: -0.009 min
 Response: 1285866
 Conc: 8.70 ng/ml

Instrument :
 ECD_O
 ClientSampleId :
 BC278406-2-1



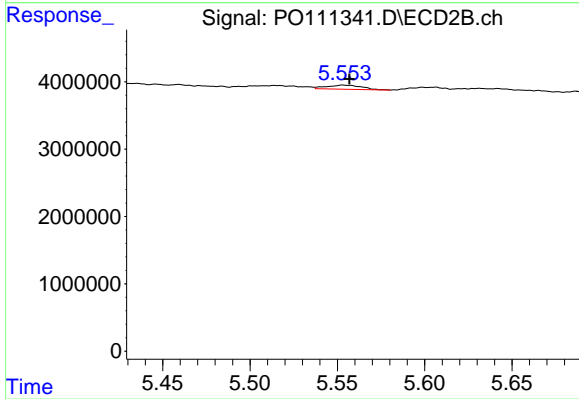
#19 AR-1242-4

R.T.: 5.046 min
 Delta R.T.: 0.010 min
 Response: 409242
 Conc: 3.31 ng/ml



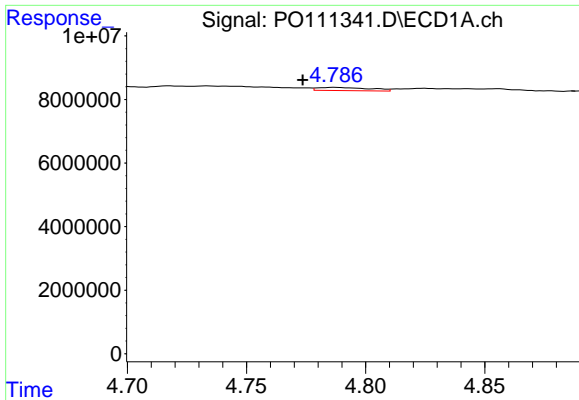
#20 AR-1242-5

R.T.: 5.625 min
 Delta R.T.: 0.005 min
 Response: 1970003
 Conc: 12.67 ng/ml



#20 AR-1242-5

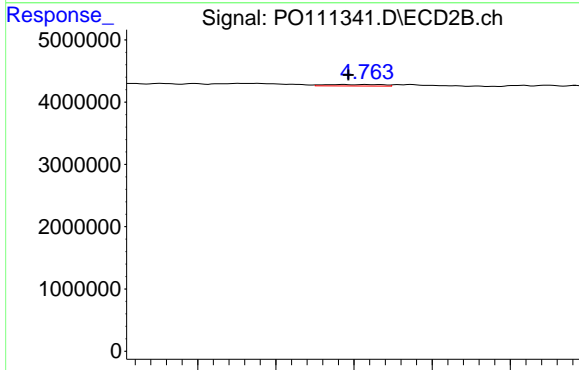
R.T.: 5.553 min
 Delta R.T.: -0.003 min
 Response: 860193
 Conc: 5.66 ng/ml



#21 AR-1248-1

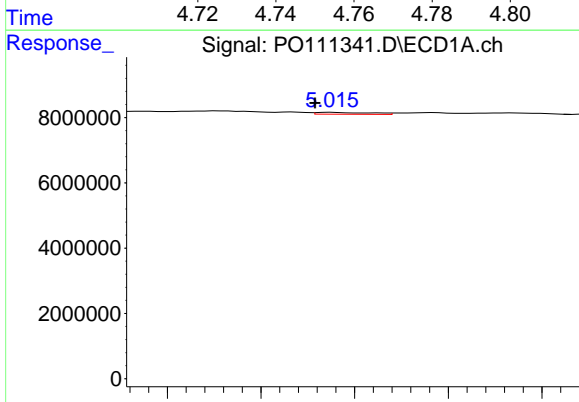
R.T.: 4.787 min
 Delta R.T.: 0.014 min
 Response: 1494922
 Conc: 9.76 ng/ml

Instrument :
 ECD_O
 ClientSampleId :
 BC278406-2-1



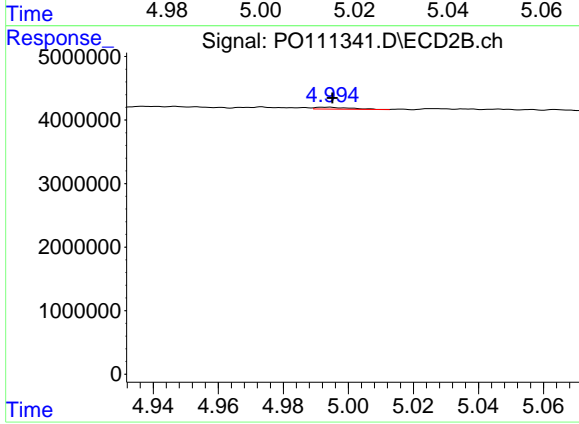
#21 AR-1248-1

R.T.: 4.757 min
 Delta R.T.: -0.001 min
 Response: 246319
 Conc: 1.90 ng/ml



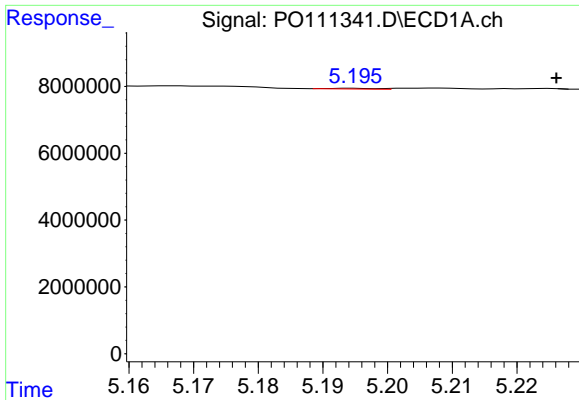
#22 AR-1248-2

R.T.: 5.015 min
 Delta R.T.: 0.003 min
 Response: 469786
 Conc: 2.34 ng/ml



#22 AR-1248-2

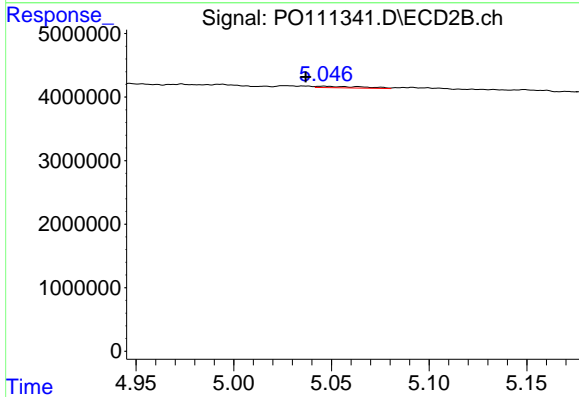
R.T.: 4.993 min
 Delta R.T.: -0.002 min
 Response: 240115
 Conc: 1.37 ng/ml



#23 AR-1248-3

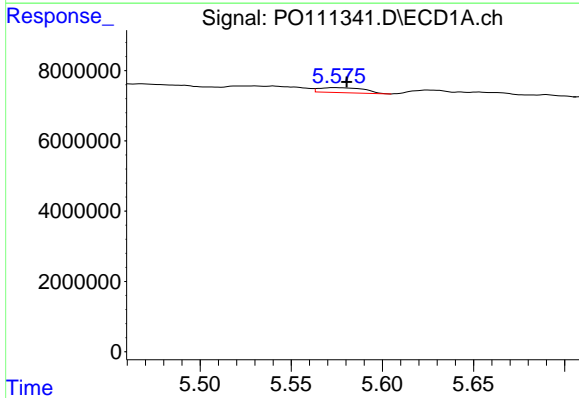
R.T.: 5.194 min
 Delta R.T.: -0.032 min
 Response: 70246
 Conc: 0.27 ng/ml

Instrument :
 ECD_O
 ClientSampleId :
 BC278406-2-1



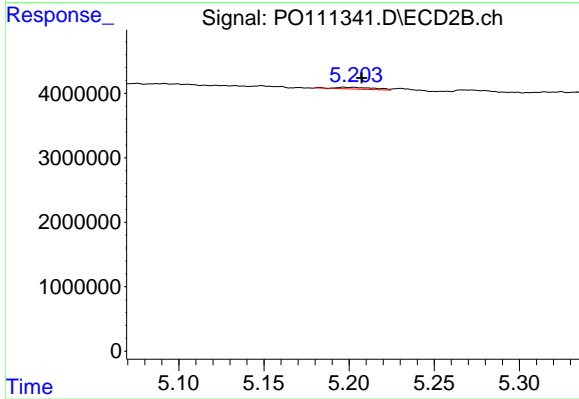
#23 AR-1248-3

R.T.: 5.046 min
 Delta R.T.: 0.009 min
 Response: 409242
 Conc: 2.18 ng/ml



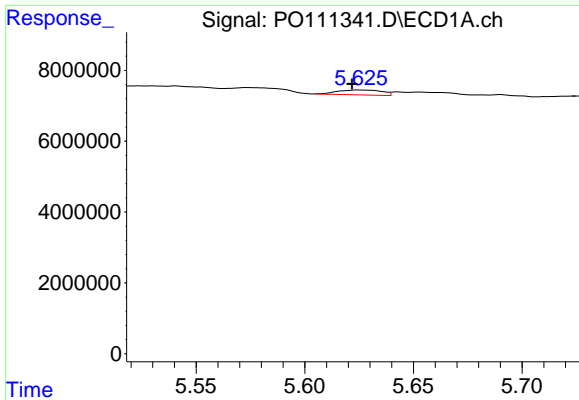
#24 AR-1248-4

R.T.: 5.574 min
 Delta R.T.: -0.006 min
 Response: 2417639
 Conc: 6.68 ng/ml



#24 AR-1248-4

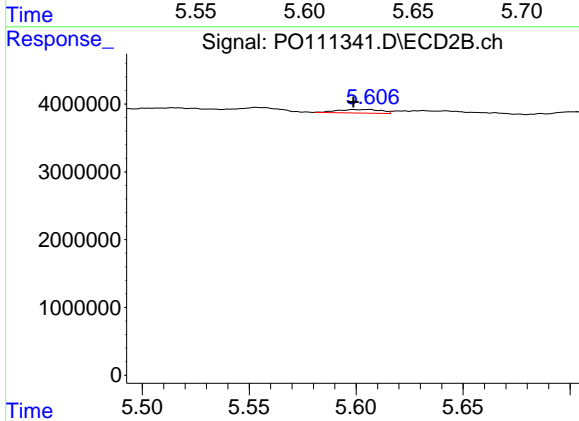
R.T.: 5.197 min
 Delta R.T.: -0.011 min
 Response: 403401
 Conc: 1.83 ng/ml



#25 AR-1248-5

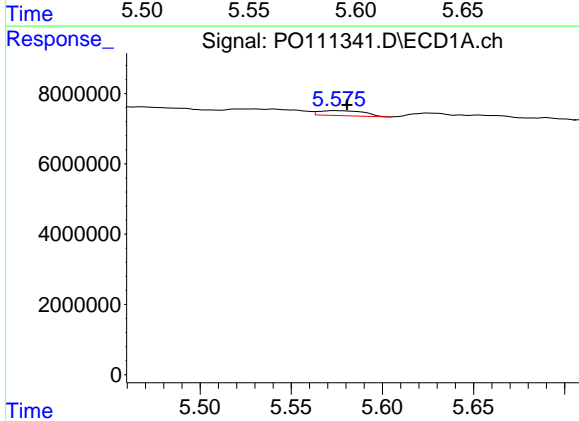
R.T.: 5.625 min
 Delta R.T.: 0.004 min
 Response: 1970003
 Conc: 7.52 ng/ml

Instrument :
 ECD_O
 ClientSampleId :
 BC278406-2-1



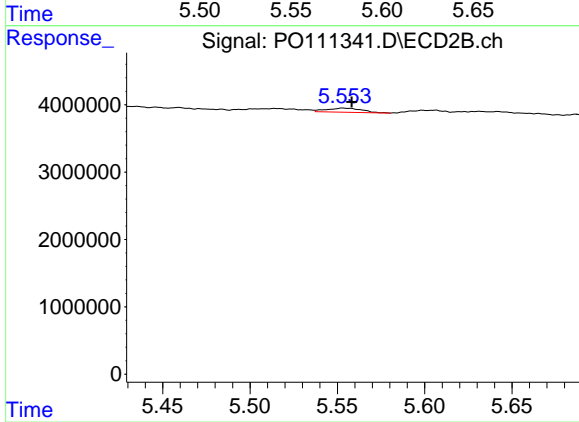
#25 AR-1248-5

R.T.: 5.606 min
 Delta R.T.: 0.007 min
 Response: 735203
 Conc: 3.37 ng/ml



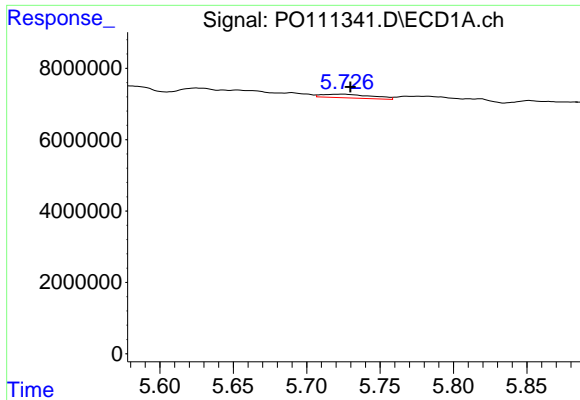
#26 AR-1254-1

R.T.: 5.574 min
 Delta R.T.: -0.006 min
 Response: 2417639
 Conc: 6.37 ng/ml



#26 AR-1254-1

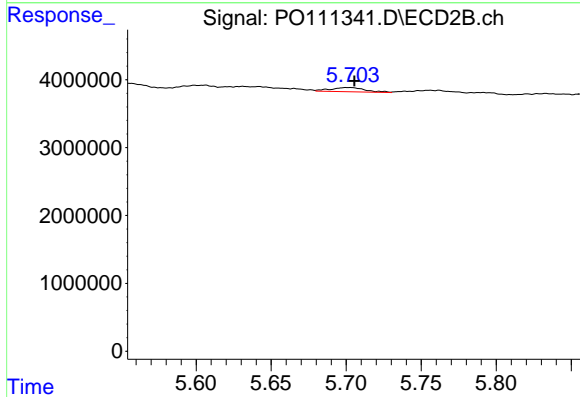
R.T.: 5.553 min
 Delta R.T.: -0.005 min
 Response: 860193
 Conc: 2.65 ng/ml



#27 AR-1254-2

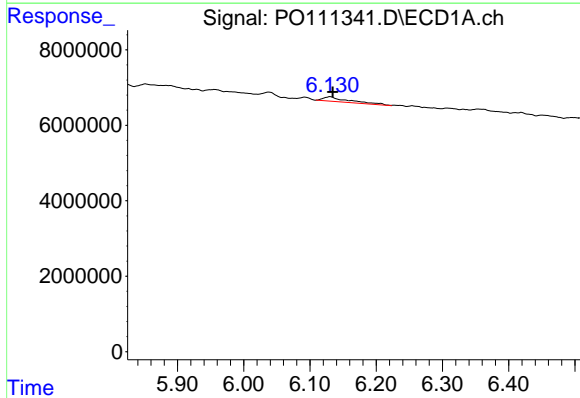
R.T.: 5.725 min
 Delta R.T.: -0.005 min
 Response: 2427323
 Conc: 7.43 ng/ml

Instrument :
 ECD_O
 ClientSampleId :
 BC278406-2-1



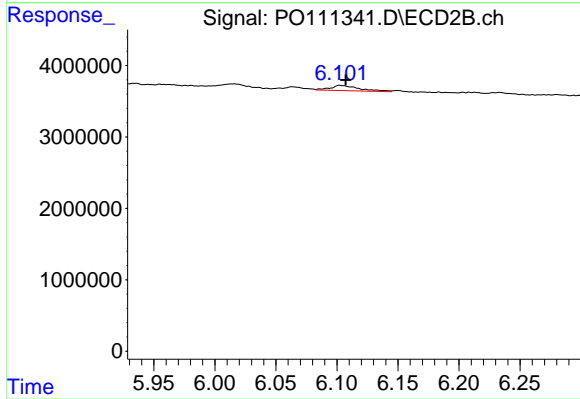
#27 AR-1254-2

R.T.: 5.702 min
 Delta R.T.: -0.003 min
 Response: 996530
 Conc: 3.52 ng/ml



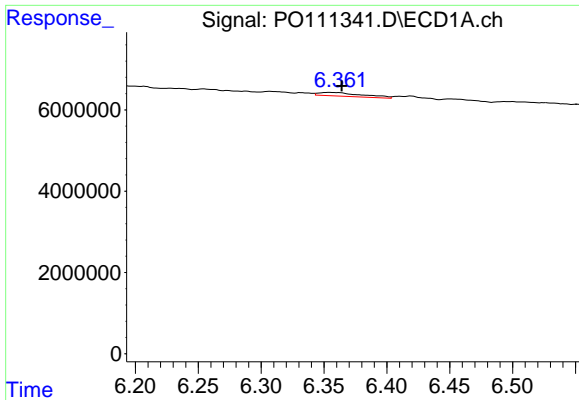
#28 AR-1254-3

R.T.: 6.131 min
 Delta R.T.: -0.004 min
 Response: 3439821
 Conc: 6.54 ng/ml



#28 AR-1254-3

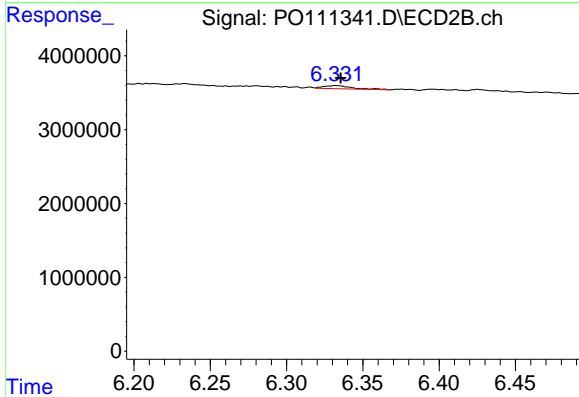
R.T.: 6.103 min
 Delta R.T.: -0.005 min
 Response: 1192917
 Conc: 2.76 ng/ml



#29 AR-1254-4

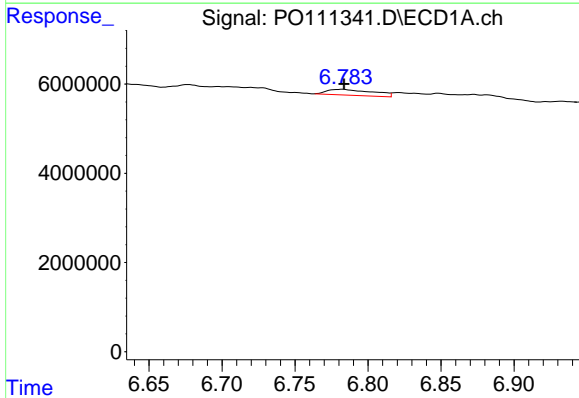
R.T.: 6.354 min
 Delta R.T.: -0.010 min
 Response: 2120439
 Conc: 6.31 ng/ml

Instrument :
 ECD_O
 ClientSampleId :
 BC278406-2-1



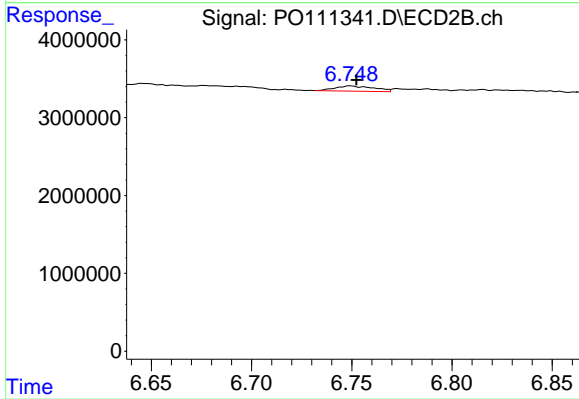
#29 AR-1254-4

R.T.: 6.333 min
 Delta R.T.: -0.003 min
 Response: 531772
 Conc: 2.15 ng/ml



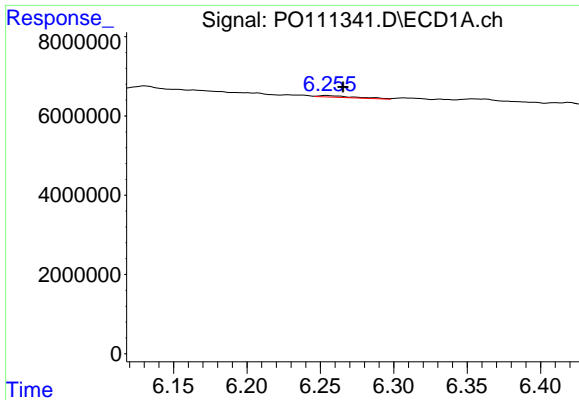
#30 AR-1254-5

R.T.: 6.783 min
 Delta R.T.: -0.001 min
 Response: 2872908
 Conc: 6.06 ng/ml



#30 AR-1254-5

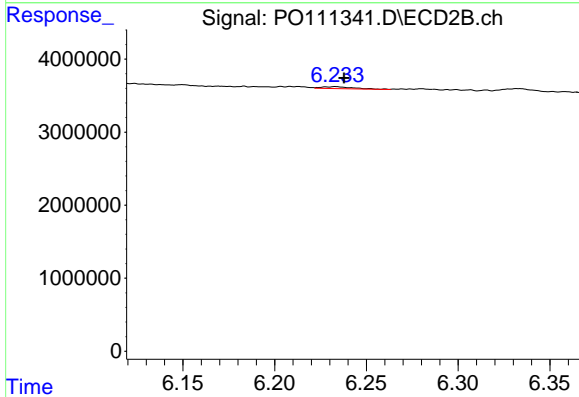
R.T.: 6.749 min
 Delta R.T.: -0.003 min
 Response: 899354
 Conc: 2.60 ng/ml



#31 AR-1260-1

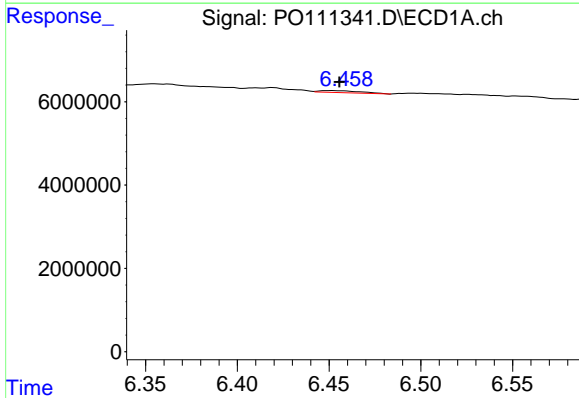
R.T.: 6.254 min
 Delta R.T.: -0.011 min
 Response: 709195
 Conc: 2.33 ng/ml

Instrument :
 ECD_O
 ClientSampleId :
 BC278406-2-1



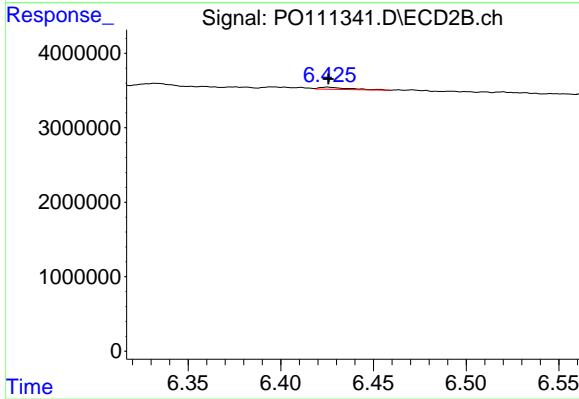
#31 AR-1260-1

R.T.: 6.233 min
 Delta R.T.: -0.004 min
 Response: 318581
 Conc: 1.27 ng/ml



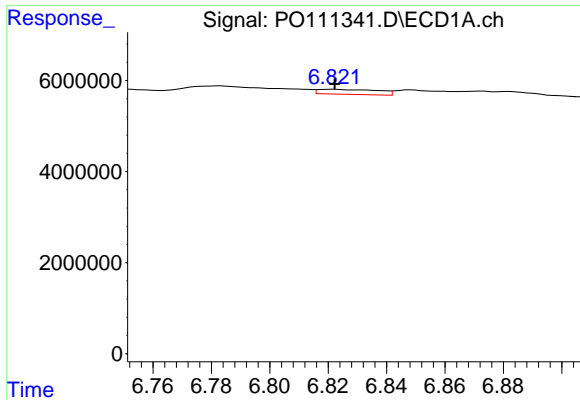
#32 AR-1260-2

R.T.: 6.451 min
 Delta R.T.: -0.005 min
 Response: 734163
 Conc: 1.92 ng/ml



#32 AR-1260-2

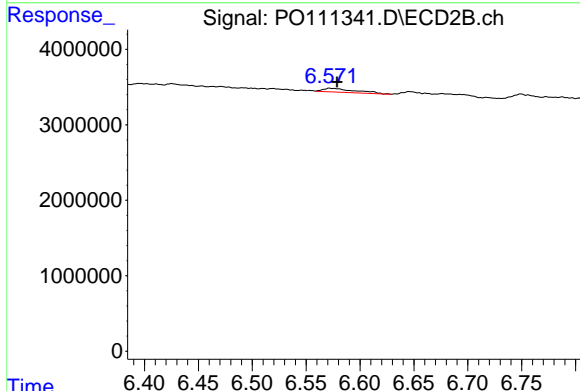
R.T.: 6.425 min
 Delta R.T.: 0.000 min
 Response: 318435
 Conc: 1.08 ng/ml



#33 AR-1260-3

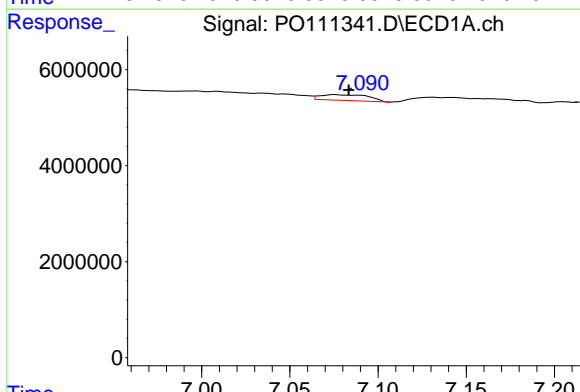
R.T.: 6.821 min
 Delta R.T.: 0.000 min
 Response: 1557065
 Conc: 4.47 ng/ml

Instrument :
 ECD_O
 ClientSampleId :
 BC278406-2-1



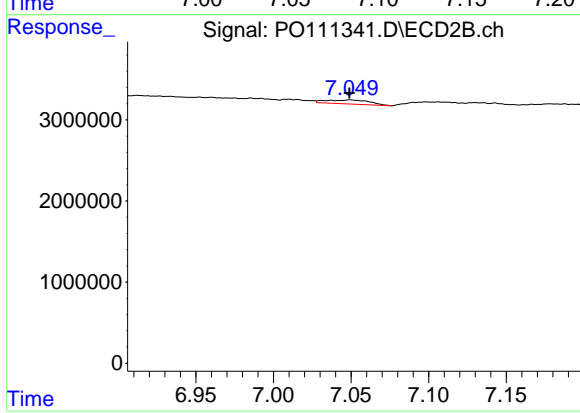
#33 AR-1260-3

R.T.: 6.572 min
 Delta R.T.: -0.007 min
 Response: 1041844
 Conc: 3.63 ng/ml



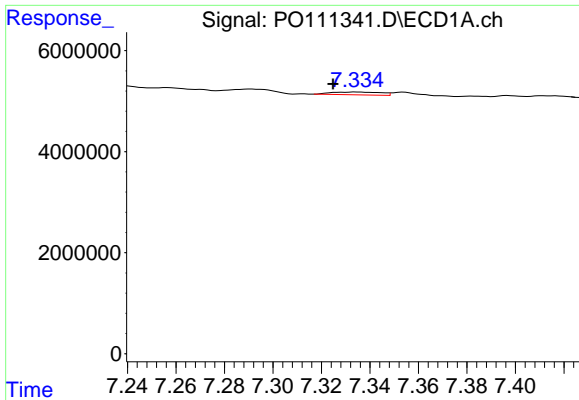
#34 AR-1260-4

R.T.: 7.075 min
 Delta R.T.: -0.008 min
 Response: 2251392
 Conc: 8.04 ng/ml



#34 AR-1260-4

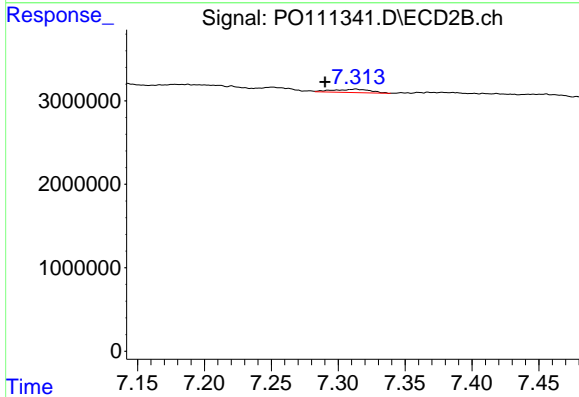
R.T.: 7.050 min
 Delta R.T.: 0.000 min
 Response: 966362
 Conc: 4.81 ng/ml



#35 AR-1260-5

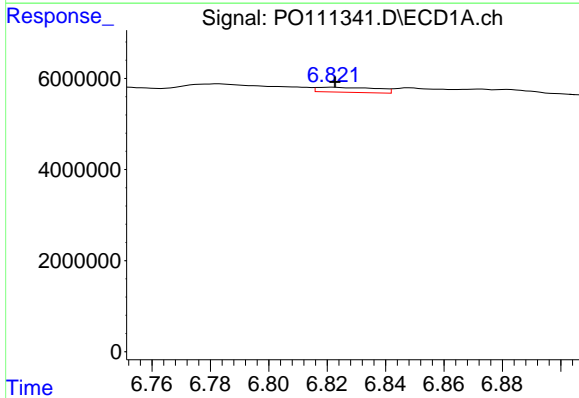
R.T.: 7.335 min
 Delta R.T.: 0.010 min
 Response: 794969
 Conc: 1.10 ng/ml

Instrument :
 ECD_O
 ClientSampleId :
 BC278406-2-1



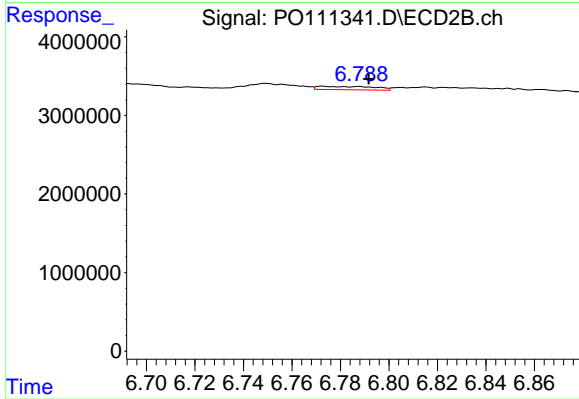
#35 AR-1260-5

R.T.: 7.313 min
 Delta R.T.: 0.023 min
 Response: 785516
 Conc: 1.71 ng/ml



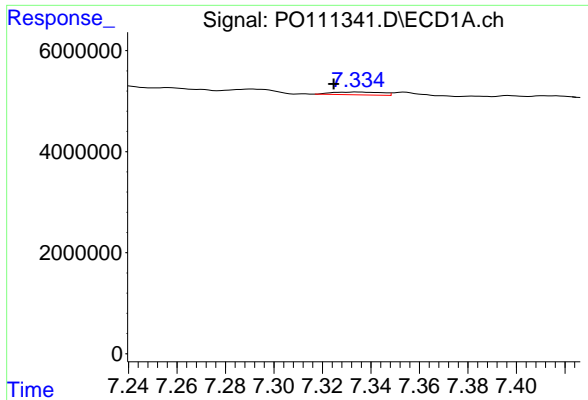
#36 AR-1262-1

R.T.: 6.821 min
 Delta R.T.: -0.001 min
 Response: 1557065
 Conc: 3.20 ng/ml



#36 AR-1262-1

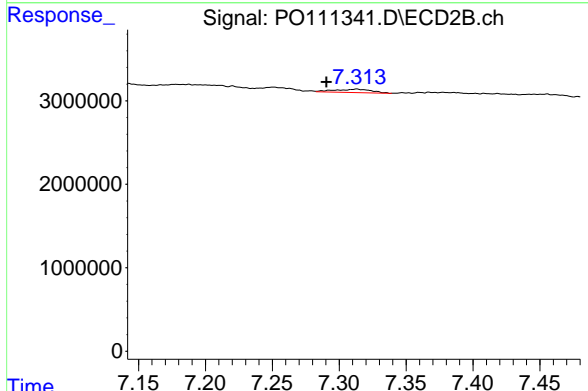
R.T.: 6.773 min
 Delta R.T.: -0.019 min
 Response: 669293
 Conc: 1.96 ng/ml



#37 AR-1262-2

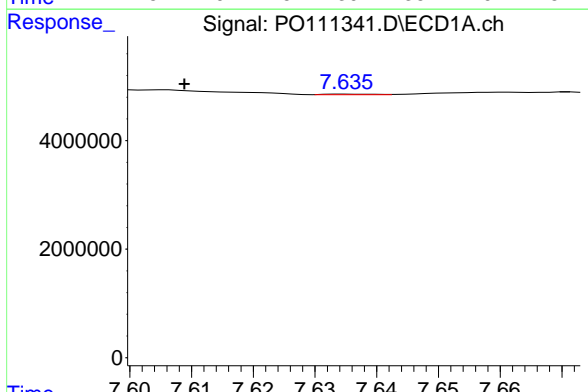
R.T.: 7.335 min
 Delta R.T.: 0.010 min
 Response: 794969
 Conc: 0.98 ng/ml

Instrument :
 ECD_O
 ClientSampleId :
 BC278406-2-1



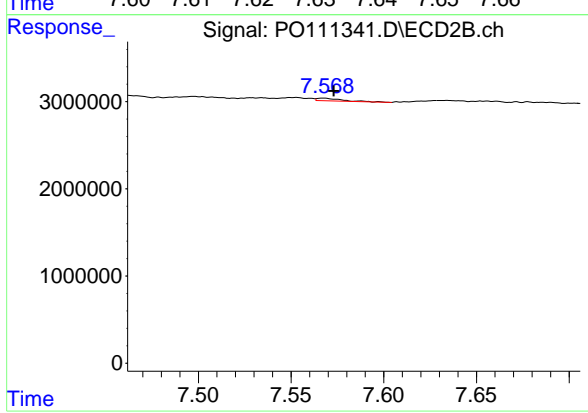
#37 AR-1262-2

R.T.: 7.313 min
 Delta R.T.: 0.023 min
 Response: 785516
 Conc: 1.56 ng/ml



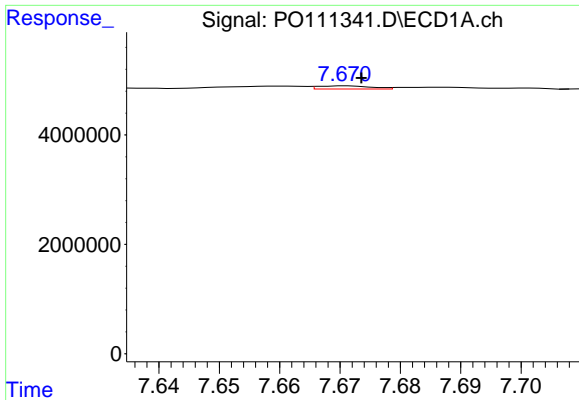
#38 AR-1262-3

R.T.: 7.635 min
 Delta R.T.: 0.026 min
 Response: 61621
 Conc: 0.18 ng/ml



#38 AR-1262-3

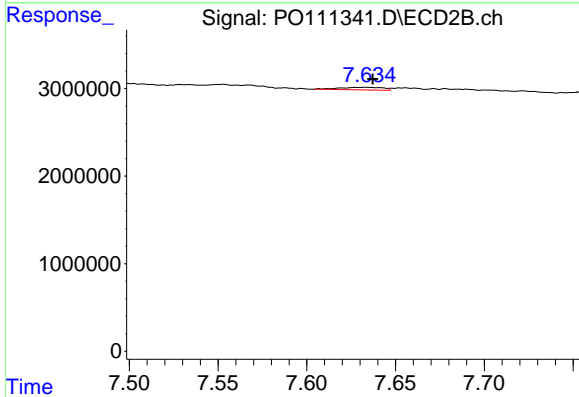
R.T.: 7.567 min
 Delta R.T.: -0.006 min
 Response: 271441
 Conc: 1.45 ng/ml



#39 AR-1262-4

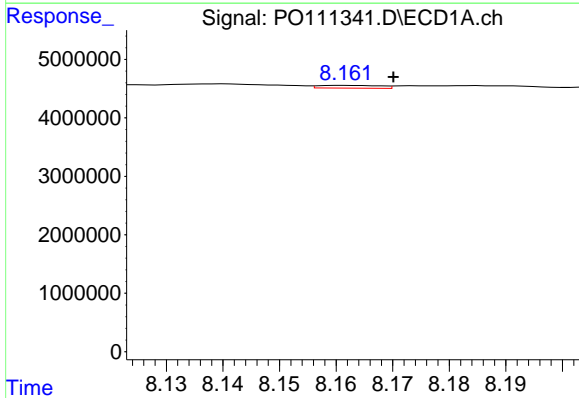
R.T.: 7.671 min
 Delta R.T.: -0.003 min
 Response: 352917
 Conc: 0.60 ng/ml

Instrument :
 ECD_O
 ClientSampleId :
 BC278406-2-1



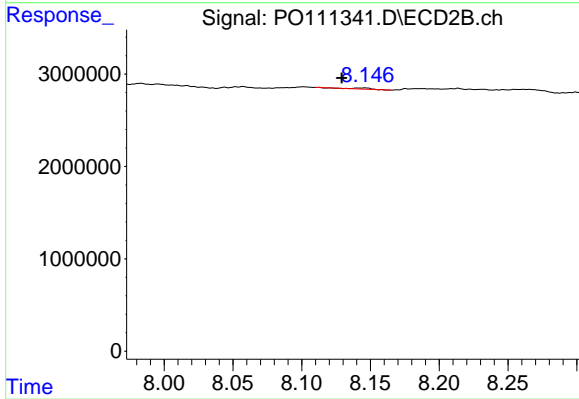
#39 AR-1262-4

R.T.: 7.634 min
 Delta R.T.: -0.003 min
 Response: 519858
 Conc: 1.57 ng/ml



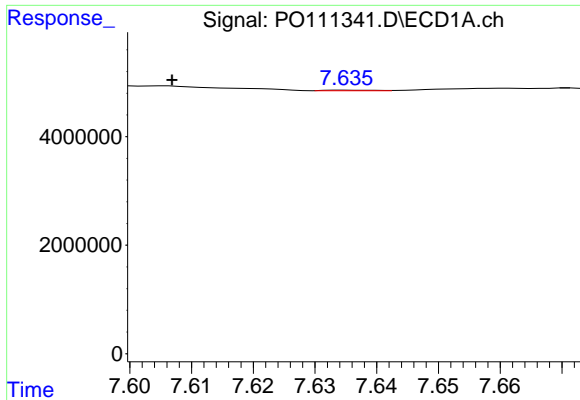
#40 AR-1262-5

R.T.: 8.161 min
 Delta R.T.: -0.009 min
 Response: 364890
 Conc: 1.28 ng/ml



#40 AR-1262-5

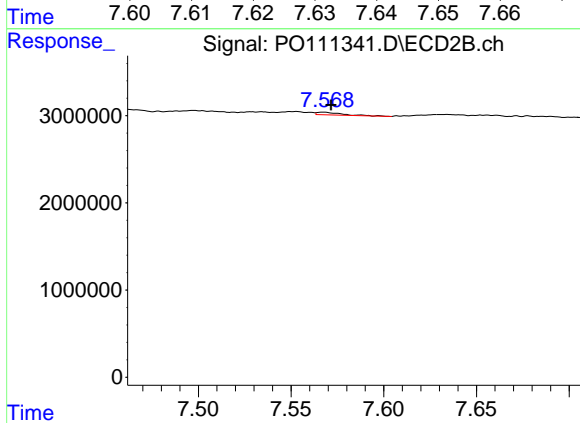
R.T.: 8.146 min
 Delta R.T.: 0.017 min
 Response: 115507
 Conc: 1.03 ng/ml



#41 AR-1268-1

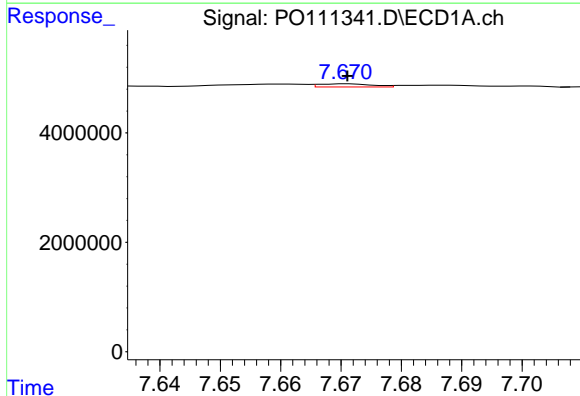
R.T.: 7.635 min
 Delta R.T.: 0.028 min
 Response: 61621
 Conc: 0.06 ng/ml

Instrument :
 ECD_O
 ClientSampleId :
 BC278406-2-1



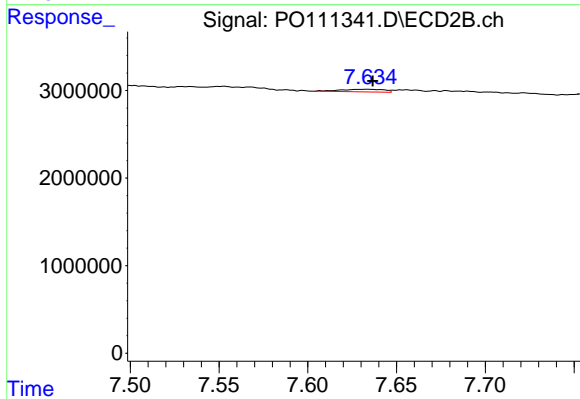
#41 AR-1268-1

R.T.: 7.567 min
 Delta R.T.: -0.004 min
 Response: 271441
 Conc: 0.51 ng/ml



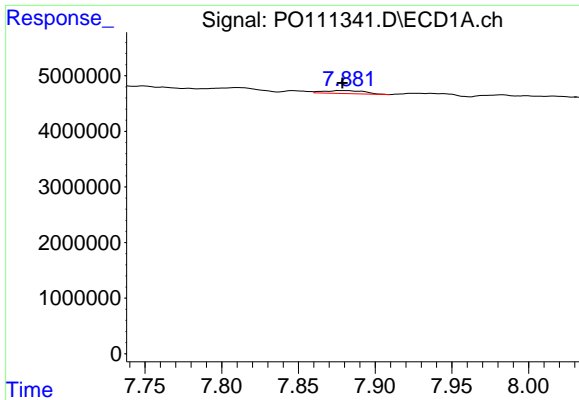
#42 AR-1268-2

R.T.: 7.671 min
 Delta R.T.: 0.000 min
 Response: 352917
 Conc: 0.40 ng/ml



#42 AR-1268-2

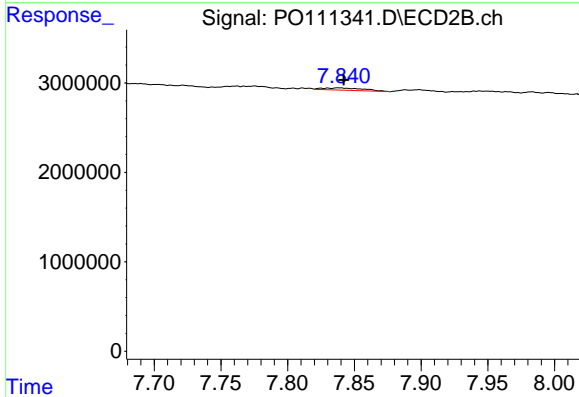
R.T.: 7.634 min
 Delta R.T.: -0.003 min
 Response: 519858
 Conc: 1.08 ng/ml



#43 AR-1268-3

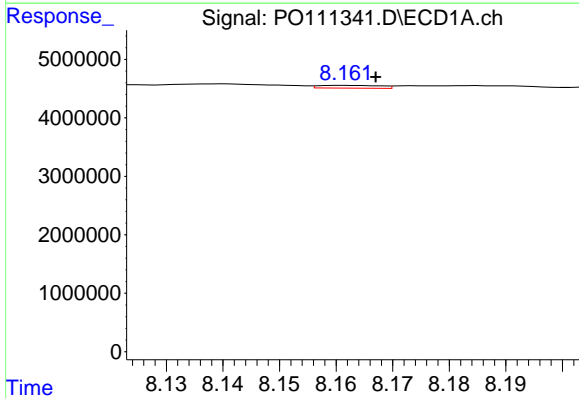
R.T.: 7.877 min
 Delta R.T.: -0.002 min
 Response: 981895
 Conc: 1.29 ng/ml

Instrument :
 ECD_O
 ClientSampleId :
 BC278406-2-1



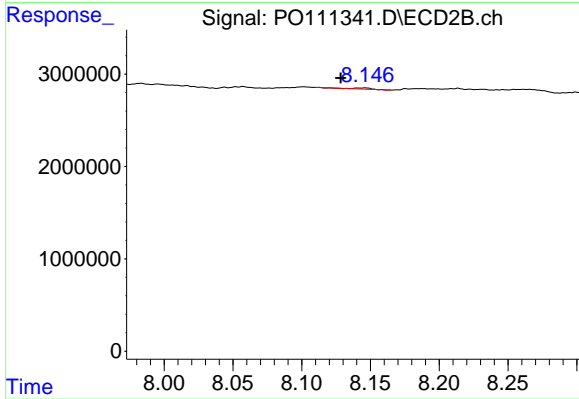
#43 AR-1268-3

R.T.: 7.839 min
 Delta R.T.: -0.003 min
 Response: 533006
 Conc: 1.53 ng/ml



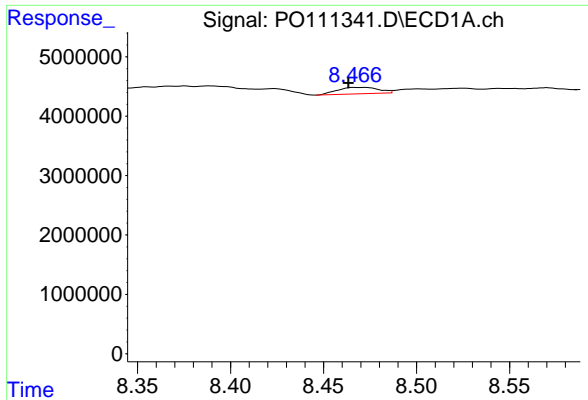
#44 AR-1268-4

R.T.: 8.161 min
 Delta R.T.: -0.006 min
 Response: 364890
 Conc: 1.12 ng/ml



#44 AR-1268-4

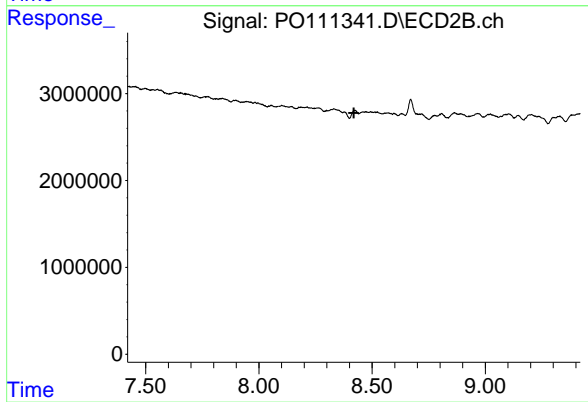
R.T.: 8.146 min
 Delta R.T.: 0.018 min
 Response: 115507
 Conc: 0.91 ng/ml



#45 AR-1268-5

R.T.: 8.466 min
 Delta R.T.: 0.003 min
 Response: 1664333
 Conc: 0.77 ng/ml

Instrument :
 ECD_O
 ClientSampleId :
 BC278406-2-1



#45 AR-1268-5

R.T.: 8.425 min
 Delta R.T.: 0.005 min
 Response: -44867
 Conc: N.D.