

Data Path : Z:\pestpcbsrv\HPCHEM1\ECD\_0\Data\P0052925\  
 Data File : PO111347.D  
 Signal(s) : Signal #1: ECD1A.ch Signal #2: ECD2B.ch  
 Acq On : 29 May 2025 20:41  
 Operator : YP/AJ  
 Sample : Q2156-01 10X  
 Misc :  
 ALS Vial : 23 Sample Multiplier: 1

Instrument :  
 ECD\_0  
 ClientSampleId :  
 KZZ331H-1-1

Integration File signal 1: autoint1.e  
 Integration File signal 2: autoint2.e  
 Quant Time: May 29 22:50:17 2025  
 Quant Method : Z:\pestpcbsrv\HPCHEM1\ECD\_0\methods\P0051525.M  
 Quant Title : GC EXTRACTABLES  
 QLast Update : Thu May 15 07:11:53 2025  
 Response via : Initial Calibration  
 Integrator: ChemStation

Volume Inj. : 2 µl  
 Signal #1 Phase : ZB-MR1 Signal #2 Phase: ZB-MR2  
 Signal #1 Info : 30Mx0.32mmx 0.50µ Signal #2 Info : 30M x 0.32mm x 0.25µm

Compound	RT#1	RT#2	Resp#1	Resp#2	ng/ml	ng/ml
-----						
System Monitoring Compounds						
1) SA Tetrachlo...	3.680	3.677	7613728	6295767	1.294	1.155
2) SA Decachlor...	8.719	8.668	7812882	2763942	1.513	1.494
Target Compounds						
3) L1 AR-1016-1	4.779	4.764	4933562	2485026	21.922	13.016 #
4) L1 AR-1016-2	4.779	4.764	4933562	2485026	15.469	8.967 #
5) L1 AR-1016-3	4.862	4.969	1375119	64750	6.333	0.443 #
6) L1 AR-1016-4	4.988	4.999	1603999	1262553	9.211	10.514
7) L1 AR-1016-5	5.208	5.231	292161	194489	1.660	1.260
8) L2 AR-1221-1	3.898	3.862	352665	445658	4.049	6.035 #
9) L2 AR-1221-2	3.986	3.976	1132720	1082580	17.781	19.895
10) L2 AR-1221-3	4.048	4.045	675276	201003	3.511	1.203 #
11) L3 AR-1232-1	4.048	4.045	675276	201003	4.409	1.539 #
12) L3 AR-1232-2	4.558	4.764	3037396	2485026	37.066	18.946 #
13) L3 AR-1232-3	4.779	4.969	4933562	64750	32.261	0.951 #
14) L3 AR-1232-4	4.988	5.030	1603999	398653	19.501	6.464 #
15) L3 AR-1232-5	5.014	5.231	3660952	194489	67.471	2.959 #
16) L4 AR-1242-1	4.779	4.764	4933562	2485026	25.803	15.425 #
17) L4 AR-1242-2	4.779	4.764	4933562	2485026	18.137	10.592 #
18) L4 AR-1242-3	4.862	4.969	1375119	64750	7.394	0.524 #
19) L4 AR-1242-4	4.988	5.030	1603999	398653	10.852	3.225 #
20) L4 AR-1242-5	5.599	5.567	2798432	665050	17.992	4.376 #
21) L5 AR-1248-1	4.779	4.764	4933562	2485026	32.211	19.156 #
22) L5 AR-1248-2	5.014	4.999	3660952	1262553	18.258	7.178 #
23) L5 AR-1248-3	5.208	5.030	292161	398653	1.141	2.125 #
24) L5 AR-1248-4	5.599	5.231	2798432	194489	7.727	0.885 #
25) L5 AR-1248-5	5.599	5.623	2798432	1185641	10.679	5.431 #
26) L6 AR-1254-1	5.599	5.567	2798432	665050	7.373	2.052 #
27) L6 AR-1254-2	5.748	5.717	2088071	674840	6.390	2.383 #
28) L6 AR-1254-3	6.140	6.104	737458	278464	1.402	0.645 #
29) L6 AR-1254-4	6.344	6.332	887205	247993	2.640	1.003 #
30) L6 AR-1254-5	6.787	6.744	439156	213299	0.926	0.617 #
31) L7 AR-1260-1	6.296	6.225	732721	614975	2.403	2.461
32) L7 AR-1260-2	6.469	6.437	195872	124528	0.511	0.423
33) L7 AR-1260-3	6.800	6.581	1084998	627459	3.113	2.188 #
34) L7 AR-1260-4	7.072	7.040	862457	508877	3.081	2.535
35) L7 AR-1260-5	7.323	7.294	594607	545464	0.826	1.187 #
36) L8 AR-1262-1	6.800	6.796	1084998	129279	2.229	0.379 #
37) L8 AR-1262-2	7.323	7.294	594607	545464	0.735	1.085 #
38) L8 AR-1262-3	7.636	7.575	453813	221420	1.342	1.180
39) L8 AR-1262-4	7.690	7.627	66675	248174	0.113	0.752 #
40) L8 AR-1262-5	8.173	8.136	545748	169873	1.913	1.513
41) L9 AR-1268-1	7.636	7.575	453813	221420	0.468	0.418

Data Path : Z:\pestpcbsrv\HPCHEM1\ECD\_0\Data\P0052925\  
 Data File : P0111347.D  
 Signal(s) : Signal #1: ECD1A.ch Signal #2: ECD2B.ch  
 Acq On : 29 May 2025 20:41  
 Operator : YP/AJ  
 Sample : Q2156-01 10X  
 Misc :  
 ALS Vial : 23 Sample Multiplier: 1

Instrument :  
 ECD\_0  
 ClientSampleId :  
 KZZ331H-1-1

Integration File signal 1: autoint1.e  
 Integration File signal 2: autoint2.e  
 Quant Time: May 29 22:50:17 2025  
 Quant Method : Z:\pestpcbsrv\HPCHEM1\ECD\_0\methods\P0051525.M  
 Quant Title : GC EXTRACTABLES  
 QLast Update : Thu May 15 07:11:53 2025  
 Response via : Initial Calibration  
 Integrator: ChemStation

Volume Inj. : 2 µl  
 Signal #1 Phase : ZB-MR1 Signal #2 Phase: ZB-MR2  
 Signal #1 Info : 30Mx0.32mmx 0.50µ Signal #2 Info : 30M x 0.32mm x 0.25µm

	Compound	RT#1	RT#2	Resp#1	Resp#2	ng/ml	ng/ml
42)	L9 AR-1268-2	7.690	7.627	66675	248174	0.075	0.515 #
43)	L9 AR-1268-3	7.879	7.845	450299	95807	0.593	0.275 #
44)	L9 AR-1268-4	8.173	8.136	545748	169873	1.671	1.335
45)	L9 AR-1268-5	8.464	8.425	159778	182706	0.074	0.243 #

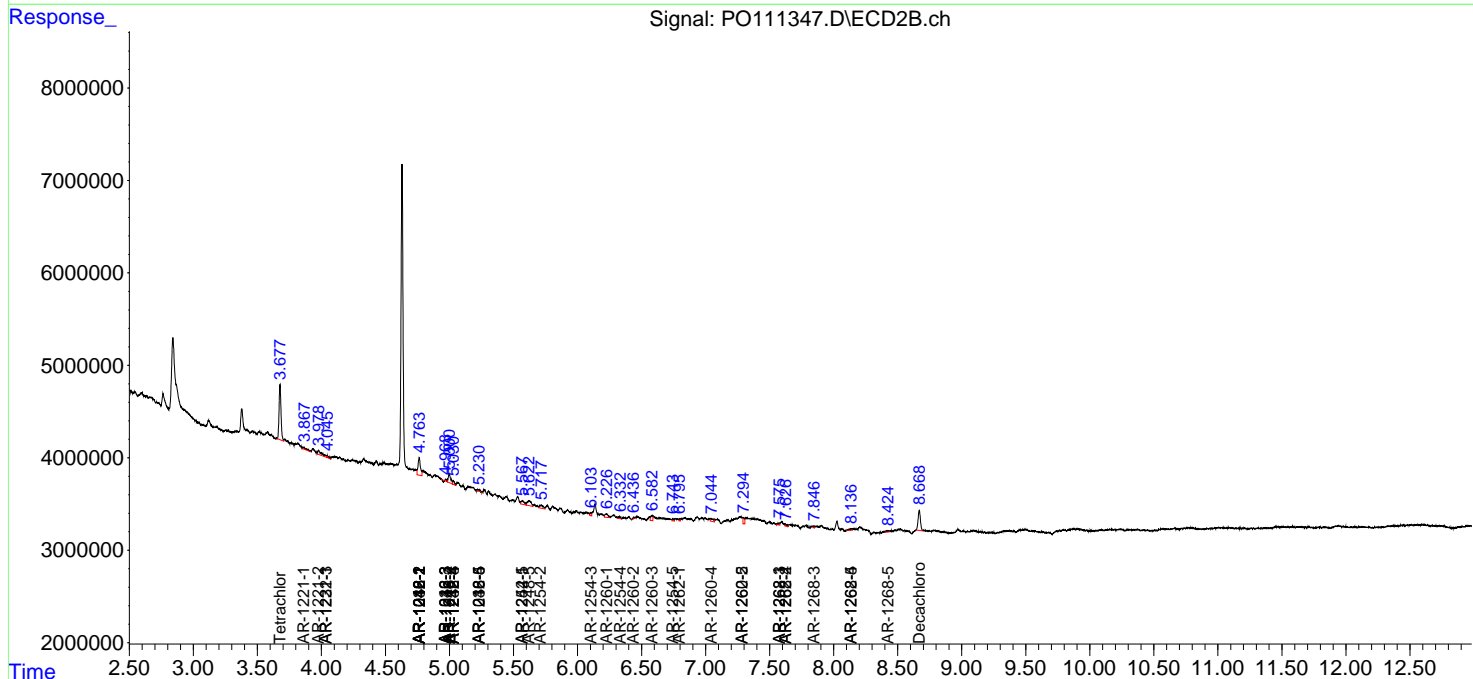
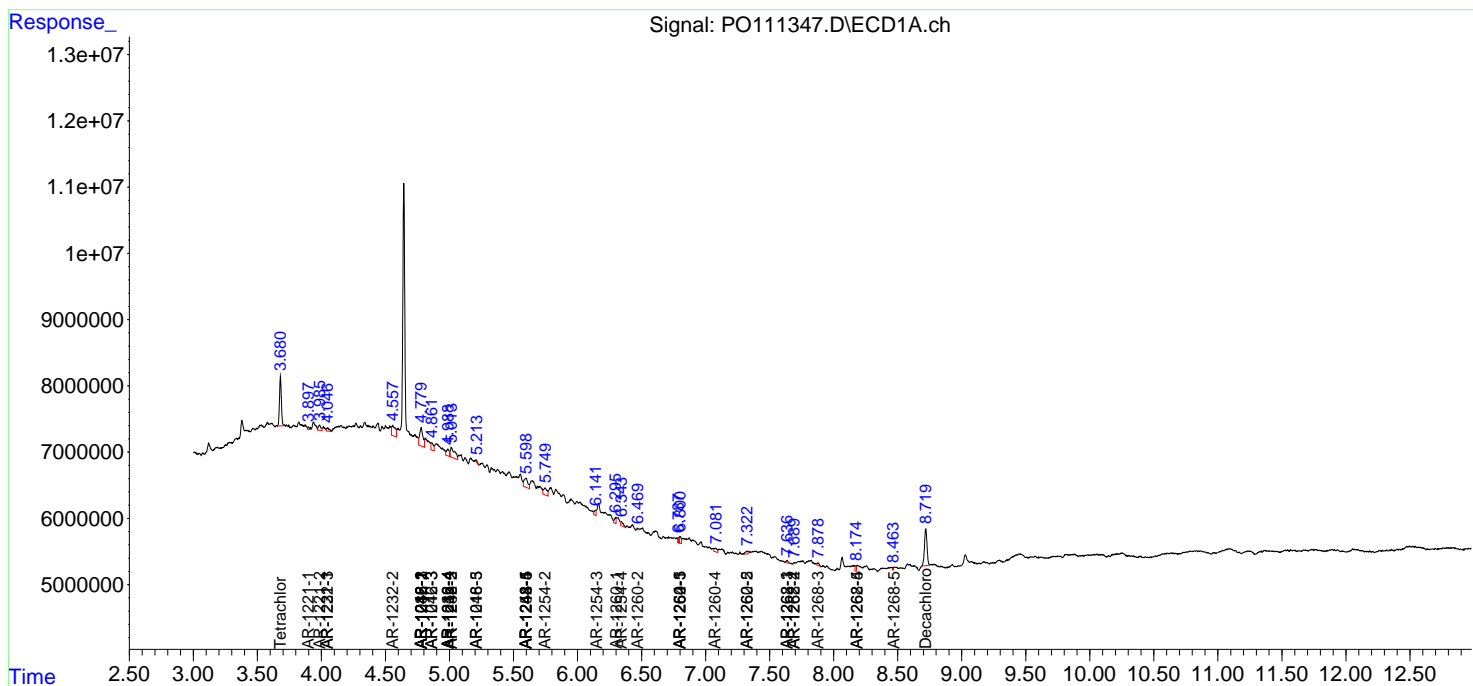
(f)=RT Delta > 1/2 Window (#)=Amounts differ by > 25% (m)=manual int.

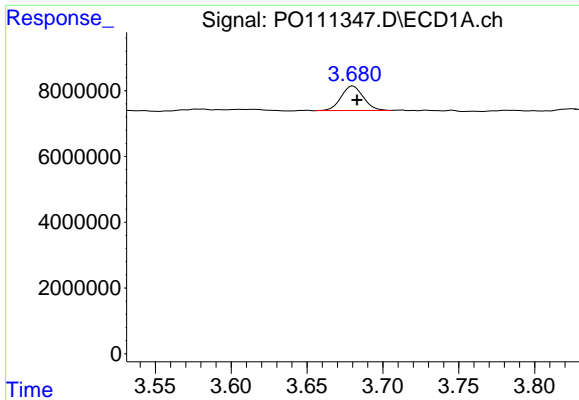
Data Path : Z:\pestpcbsrv\HPCHEM1\ECD\_O\Data\P0052925\  
 Data File : P0111347.D  
 Signal(s) : Signal #1: ECD1A.ch Signal #2: ECD2B.ch  
 Acq On : 29 May 2025 20:41  
 Operator : YP/AJ  
 Sample : Q2156-01 10X  
 Misc :  
 ALS Vial : 23 Sample Multiplier: 1

Instrument :  
 ECD\_O  
 ClientSampleId :  
 KZZ331H-1-1

Integration File signal 1: autoint1.e  
 Integration File signal 2: autoint2.e  
 Quant Time: May 29 22:50:17 2025  
 Quant Method : Z:\pestpcbsrv\HPCHEM1\ECD\_O\methods\P0051525.M  
 Quant Title : GC EXTRACTABLES  
 QLast Update : Thu May 15 07:11:53 2025  
 Response via : Initial Calibration  
 Integrator: ChemStation

Volume Inj. : 2 µl  
 Signal #1 Phase : ZB-MR1 Signal #2 Phase: ZB-MR2  
 Signal #1 Info : 30Mx0.32mmx 0.50µ Signal #2 Info : 30M x 0.32mm x 0.25µm

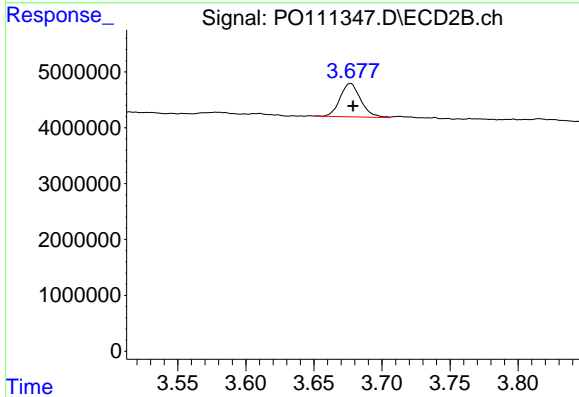




#1 Tetrachloro-m-xylene

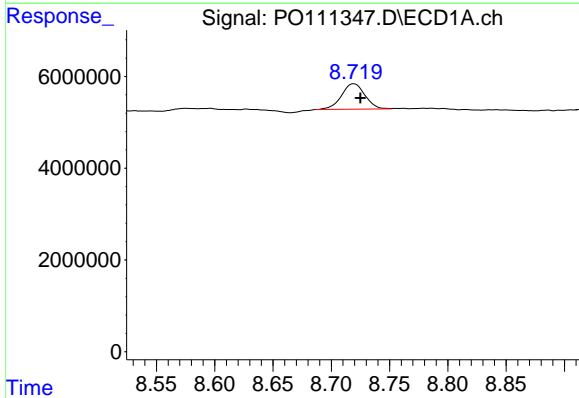
R.T.: 3.680 min  
 Delta R.T.: -0.003 min  
 Response: 7613728  
 Conc: 1.29 ng/ml

Instrument :  
 ECD\_O  
 ClientSampleId :  
 KZZ331H-1-1



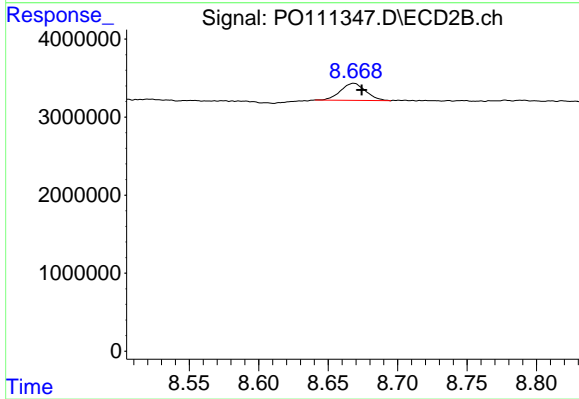
#1 Tetrachloro-m-xylene

R.T.: 3.677 min  
 Delta R.T.: -0.002 min  
 Response: 6295767  
 Conc: 1.15 ng/ml



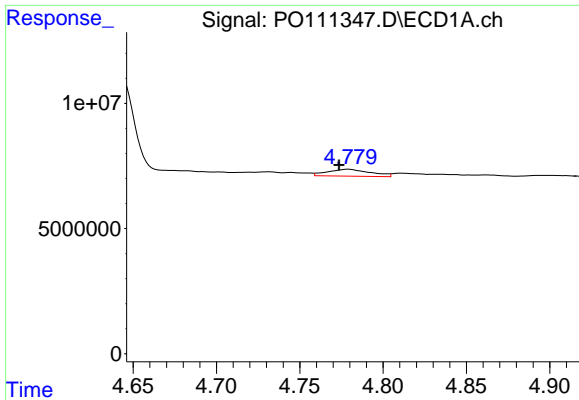
#2 Decachlorobiphenyl

R.T.: 8.719 min  
 Delta R.T.: -0.006 min  
 Response: 7812882  
 Conc: 1.51 ng/ml



#2 Decachlorobiphenyl

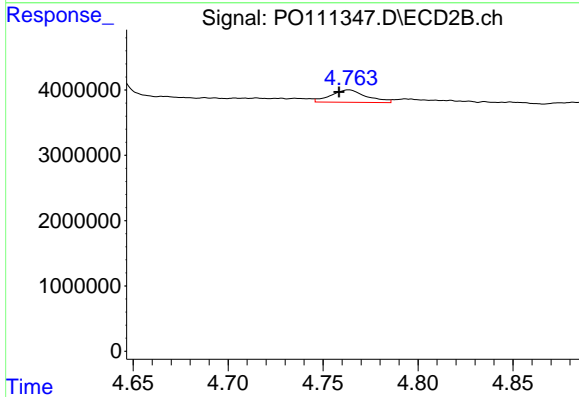
R.T.: 8.668 min  
 Delta R.T.: -0.006 min  
 Response: 2763942  
 Conc: 1.49 ng/ml



#3 AR-1016-1

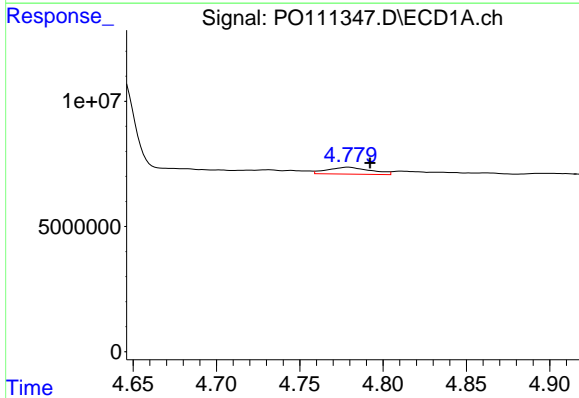
R.T.: 4.779 min  
 Delta R.T.: 0.006 min  
 Response: 4933562  
 Conc: 21.92 ng/ml

Instrument :  
 ECD\_O  
 ClientSampleId :  
 KZZ331H-1-1



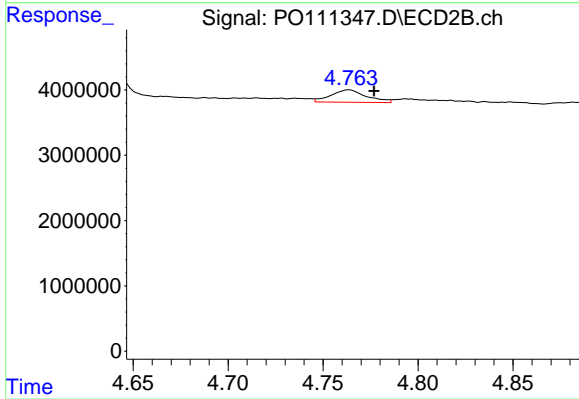
#3 AR-1016-1

R.T.: 4.764 min  
 Delta R.T.: 0.005 min  
 Response: 2485026  
 Conc: 13.02 ng/ml



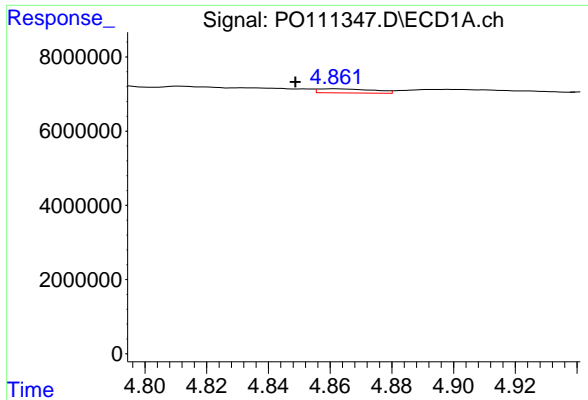
#4 AR-1016-2

R.T.: 4.779 min  
 Delta R.T.: -0.013 min  
 Response: 4933562  
 Conc: 15.47 ng/ml



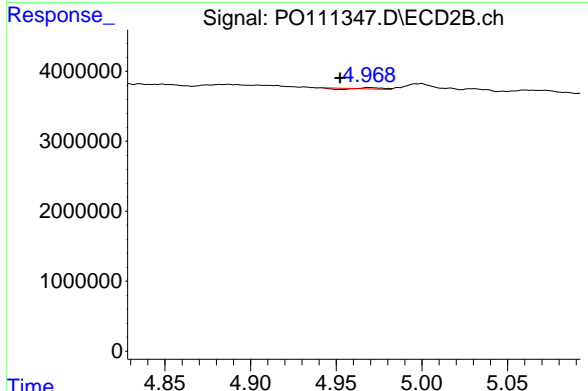
#4 AR-1016-2

R.T.: 4.764 min  
 Delta R.T.: -0.013 min  
 Response: 2485026  
 Conc: 8.97 ng/ml

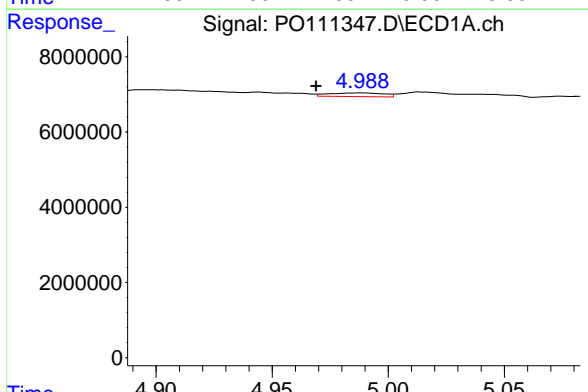


#5 AR-1016-3  
 R.T.: 4.862 min  
 Delta R.T.: 0.013 min  
 Response: 1375119  
 Conc: 6.33 ng/ml

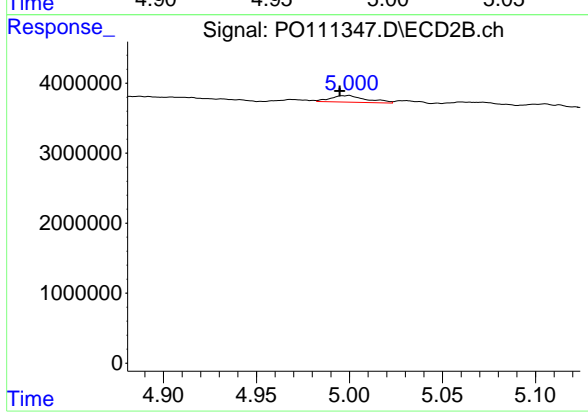
Instrument :  
 ECD\_O  
 ClientSampleId :  
 KZZ331H-1-1



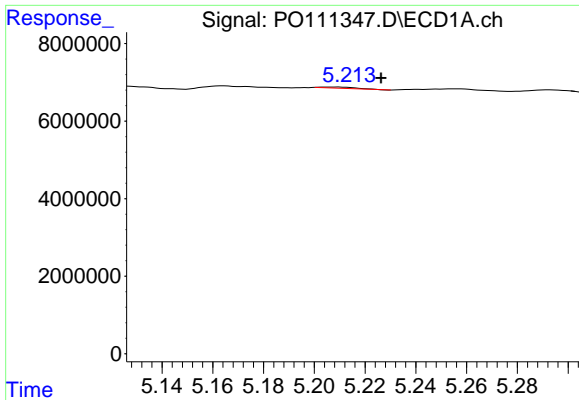
#5 AR-1016-3  
 R.T.: 4.969 min  
 Delta R.T.: 0.017 min  
 Response: 64750  
 Conc: 0.44 ng/ml



#6 AR-1016-4  
 R.T.: 4.988 min  
 Delta R.T.: 0.019 min  
 Response: 1603999  
 Conc: 9.21 ng/ml



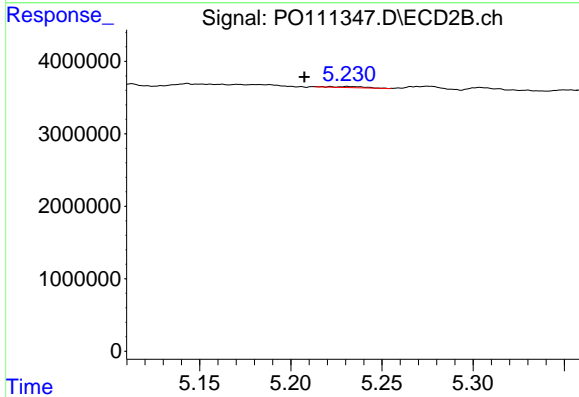
#6 AR-1016-4  
 R.T.: 4.999 min  
 Delta R.T.: 0.004 min  
 Response: 1262553  
 Conc: 10.51 ng/ml



#7 AR-1016-5

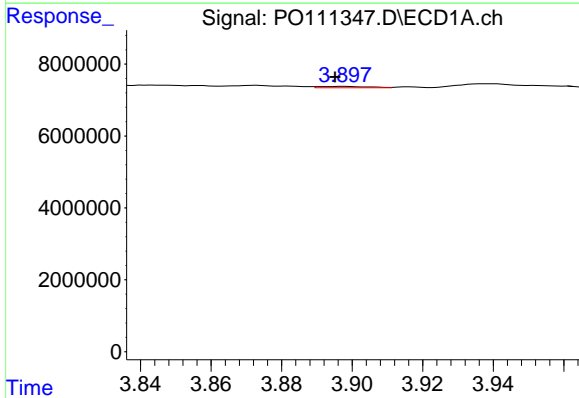
R.T.: 5.208 min  
 Delta R.T.: -0.018 min  
 Response: 292161  
 Conc: 1.66 ng/ml

Instrument :  
 ECD\_O  
 ClientSampleId :  
 KZZ331H-1-1



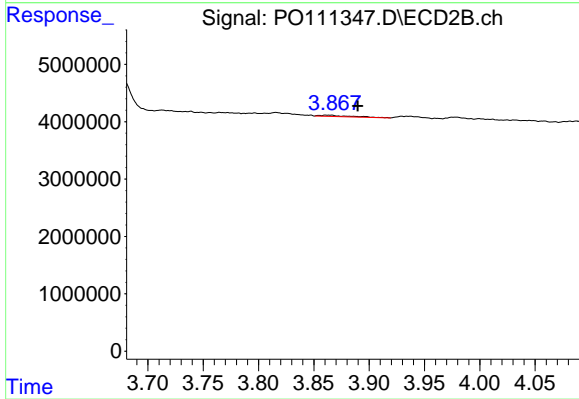
#7 AR-1016-5

R.T.: 5.231 min  
 Delta R.T.: 0.024 min  
 Response: 194489  
 Conc: 1.26 ng/ml



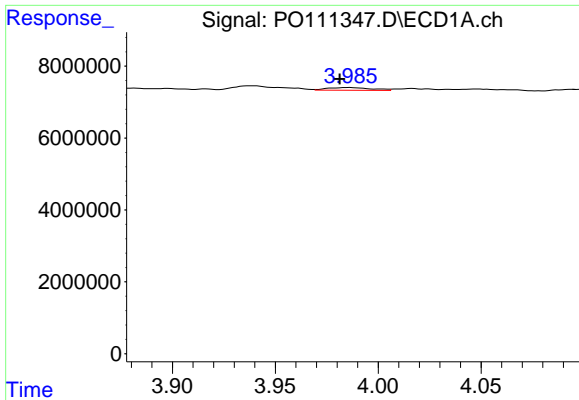
#8 AR-1221-1

R.T.: 3.898 min  
 Delta R.T.: 0.003 min  
 Response: 352665  
 Conc: 4.05 ng/ml



#8 AR-1221-1

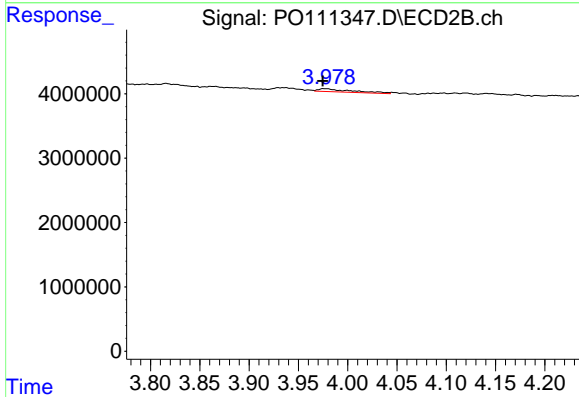
R.T.: 3.862 min  
 Delta R.T.: -0.028 min  
 Response: 445658  
 Conc: 6.04 ng/ml



#9 AR-1221-2

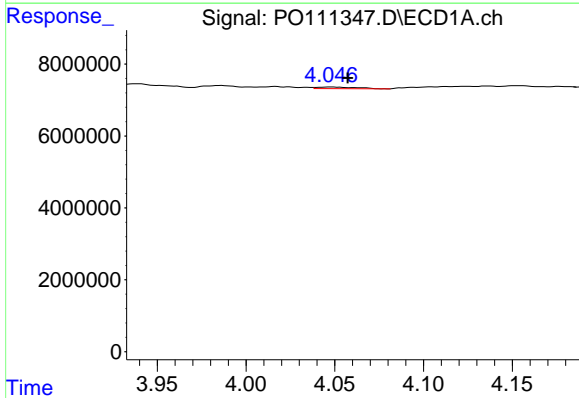
R.T.: 3.986 min  
 Delta R.T.: 0.004 min  
 Response: 1132720  
 Conc: 17.78 ng/ml

Instrument :  
 ECD\_O  
 ClientSampleId :  
 KZZ331H-1-1



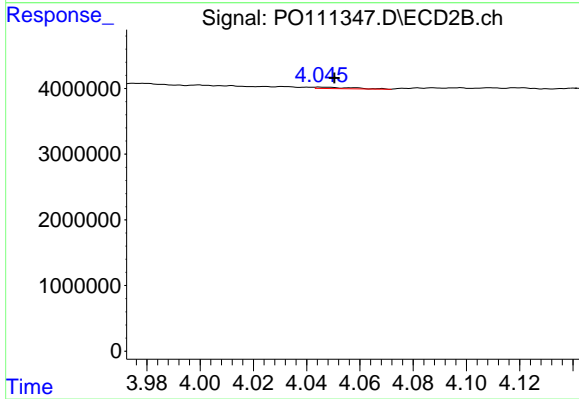
#9 AR-1221-2

R.T.: 3.976 min  
 Delta R.T.: 0.001 min  
 Response: 1082580  
 Conc: 19.90 ng/ml



#10 AR-1221-3

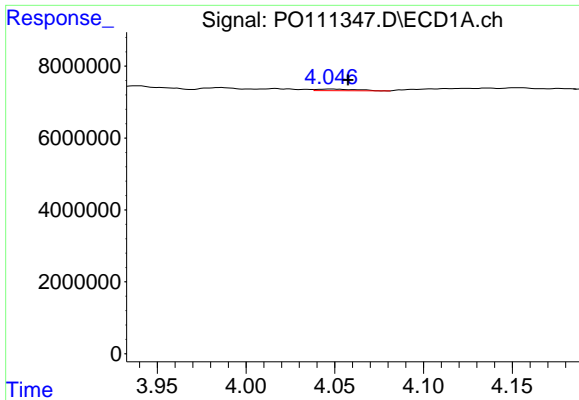
R.T.: 4.048 min  
 Delta R.T.: -0.010 min  
 Response: 675276  
 Conc: 3.51 ng/ml



#10 AR-1221-3

R.T.: 4.045 min  
 Delta R.T.: -0.006 min  
 Response: 201003  
 Conc: 1.20 ng/ml

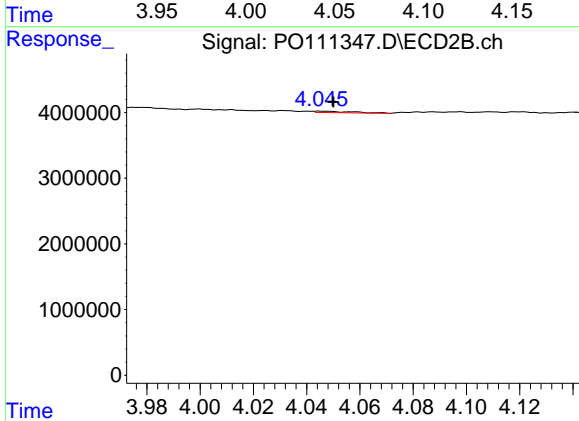




#11 AR-1232-1

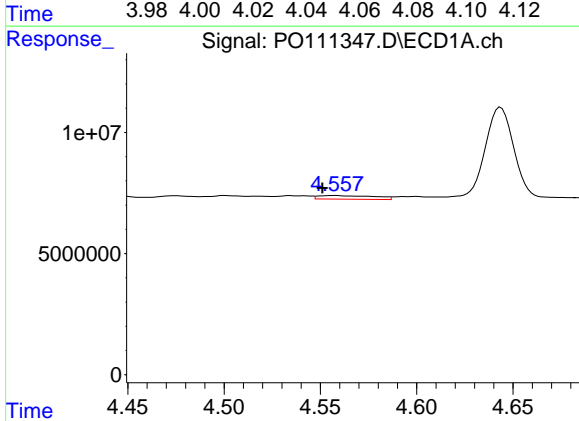
R.T.: 4.048 min  
 Delta R.T.: -0.010 min  
 Response: 675276  
 Conc: 4.41 ng/ml

Instrument :  
 ECD\_O  
 ClientSampleId :  
 KZZ331H-1-1



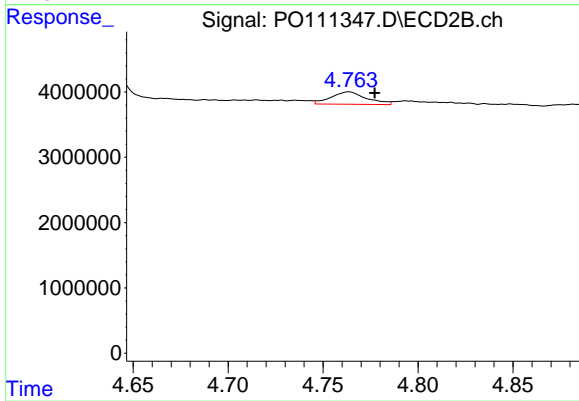
#11 AR-1232-1

R.T.: 4.045 min  
 Delta R.T.: -0.005 min  
 Response: 201003  
 Conc: 1.54 ng/ml



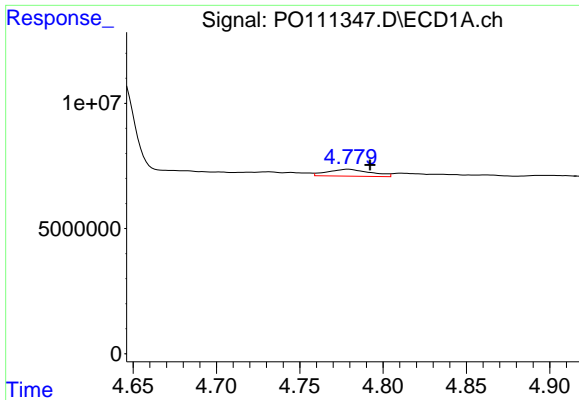
#12 AR-1232-2

R.T.: 4.558 min  
 Delta R.T.: 0.007 min  
 Response: 3037396  
 Conc: 37.07 ng/ml



#12 AR-1232-2

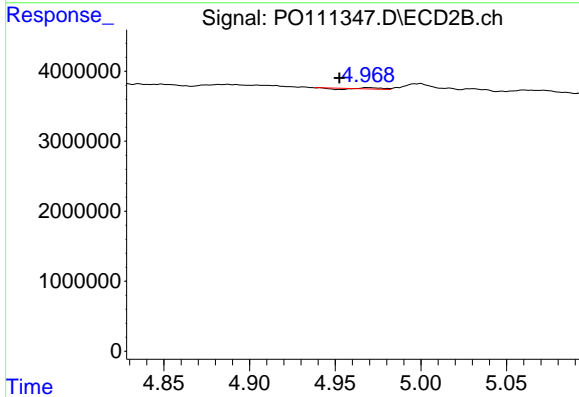
R.T.: 4.764 min  
 Delta R.T.: -0.014 min  
 Response: 2485026  
 Conc: 18.95 ng/ml



#13 AR-1232-3

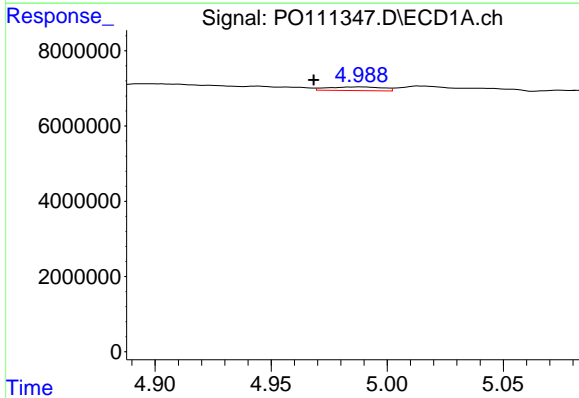
R.T.: 4.779 min  
 Delta R.T.: -0.013 min  
 Response: 4933562  
 Conc: 32.26 ng/ml

Instrument :  
 ECD\_O  
 ClientSampleId :  
 KZZ331H-1-1



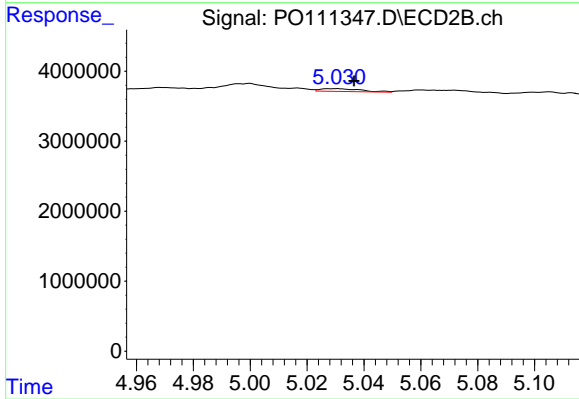
#13 AR-1232-3

R.T.: 4.969 min  
 Delta R.T.: 0.017 min  
 Response: 64750  
 Conc: 0.95 ng/ml



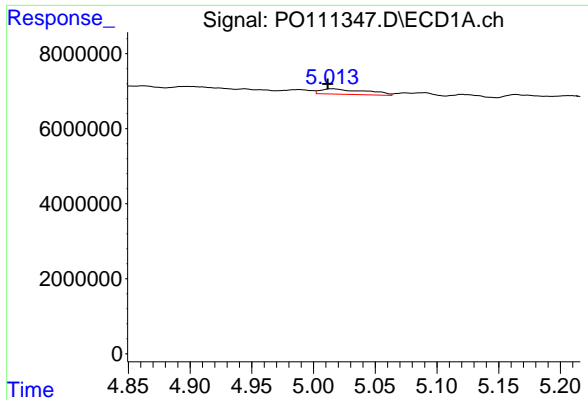
#14 AR-1232-4

R.T.: 4.988 min  
 Delta R.T.: 0.020 min  
 Response: 1603999  
 Conc: 19.50 ng/ml



#14 AR-1232-4

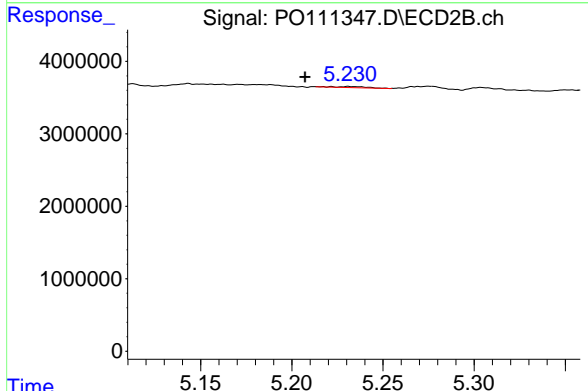
R.T.: 5.030 min  
 Delta R.T.: -0.007 min  
 Response: 398653  
 Conc: 6.46 ng/ml



#15 AR-1232-5

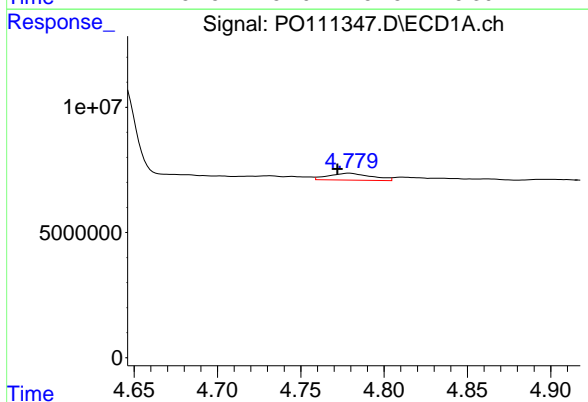
R.T.: 5.014 min  
 Delta R.T.: 0.003 min  
 Response: 3660952  
 Conc: 67.47 ng/ml

Instrument :  
 ECD\_O  
 ClientSampleId :  
 KZZ331H-1-1



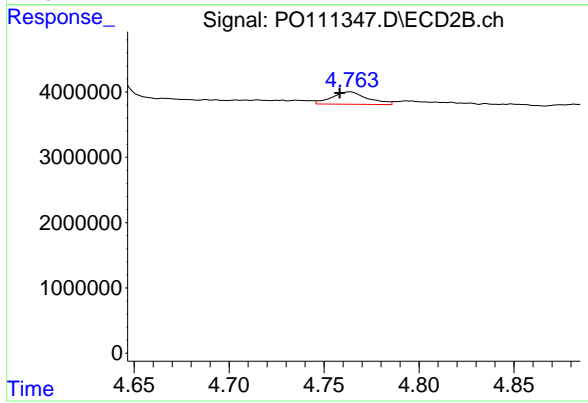
#15 AR-1232-5

R.T.: 5.231 min  
 Delta R.T.: 0.024 min  
 Response: 194489  
 Conc: 2.96 ng/ml



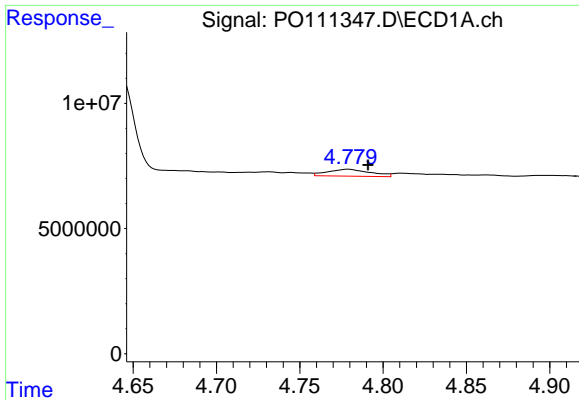
#16 AR-1242-1

R.T.: 4.779 min  
 Delta R.T.: 0.007 min  
 Response: 4933562  
 Conc: 25.80 ng/ml



#16 AR-1242-1

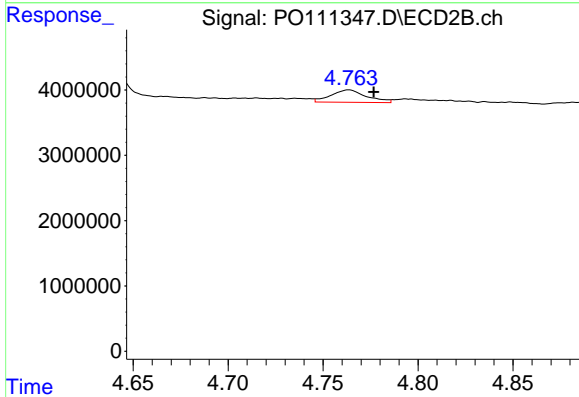
R.T.: 4.764 min  
 Delta R.T.: 0.005 min  
 Response: 2485026  
 Conc: 15.42 ng/ml



#17 AR-1242-2

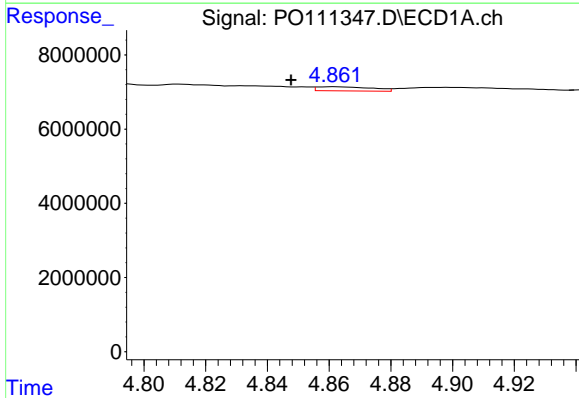
R.T.: 4.779 min  
 Delta R.T.: -0.012 min  
 Response: 4933562  
 Conc: 18.14 ng/ml

Instrument :  
 ECD\_O  
 ClientSampleId :  
 KZZ331H-1-1



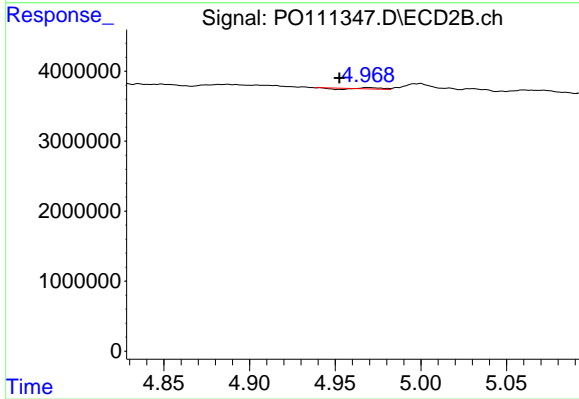
#17 AR-1242-2

R.T.: 4.764 min  
 Delta R.T.: -0.013 min  
 Response: 2485026  
 Conc: 10.59 ng/ml



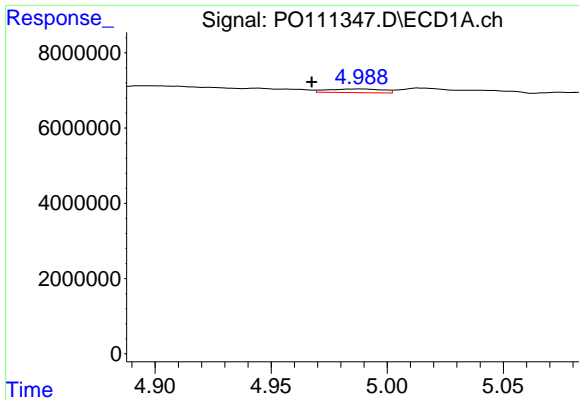
#18 AR-1242-3

R.T.: 4.862 min  
 Delta R.T.: 0.014 min  
 Response: 1375119  
 Conc: 7.39 ng/ml



#18 AR-1242-3

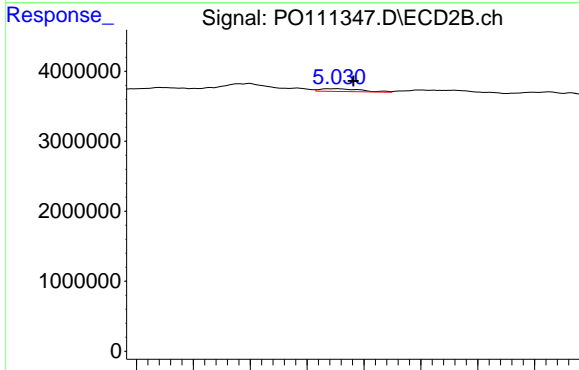
R.T.: 4.969 min  
 Delta R.T.: 0.017 min  
 Response: 64750  
 Conc: 0.52 ng/ml



#19 AR-1242-4

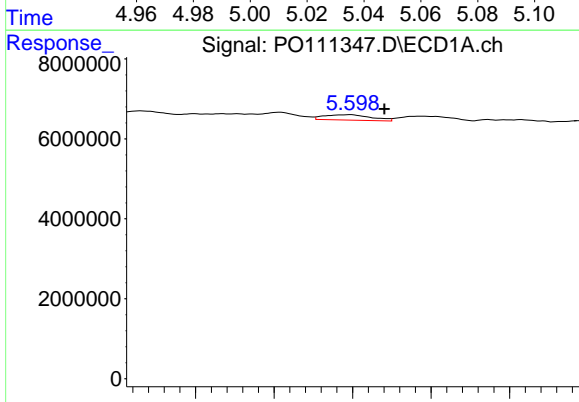
R.T.: 4.988 min  
 Delta R.T.: 0.021 min  
 Response: 1603999  
 Conc: 10.85 ng/ml

Instrument :  
 ECD\_O  
 ClientSampleId :  
 KZZ331H-1-1



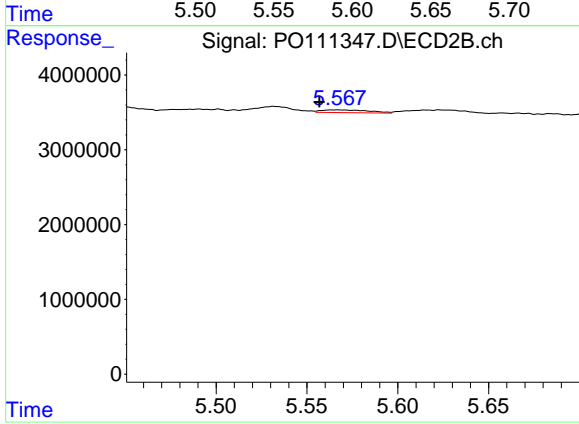
#19 AR-1242-4

R.T.: 5.030 min  
 Delta R.T.: -0.007 min  
 Response: 398653  
 Conc: 3.22 ng/ml



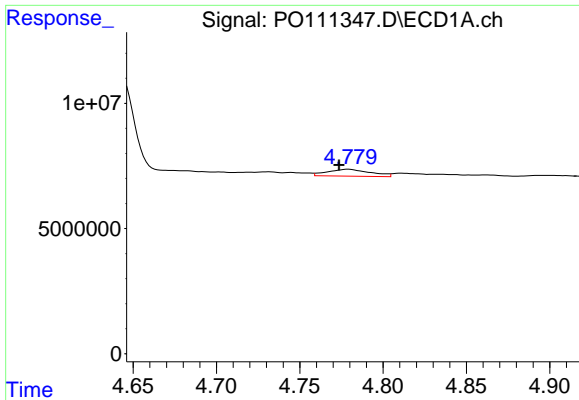
#20 AR-1242-5

R.T.: 5.599 min  
 Delta R.T.: -0.022 min  
 Response: 2798432  
 Conc: 17.99 ng/ml



#20 AR-1242-5

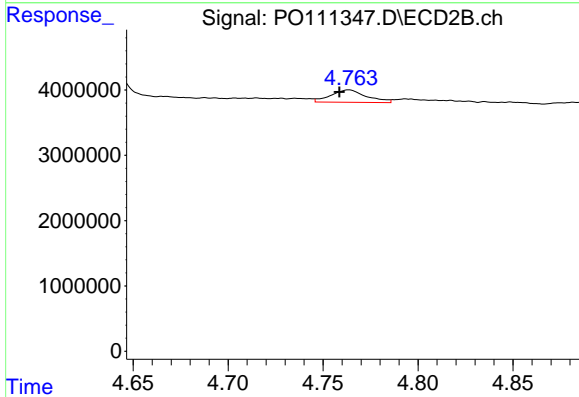
R.T.: 5.567 min  
 Delta R.T.: 0.010 min  
 Response: 665050  
 Conc: 4.38 ng/ml



#21 AR-1248-1

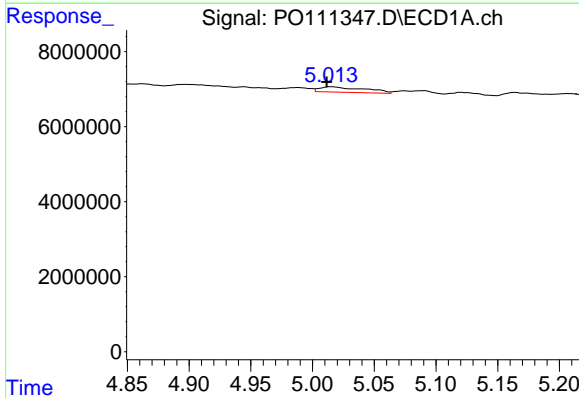
R.T.: 4.779 min  
 Delta R.T.: 0.006 min  
 Response: 4933562  
 Conc: 32.21 ng/ml

Instrument :  
 ECD\_O  
 ClientSampleId :  
 KZZ331H-1-1



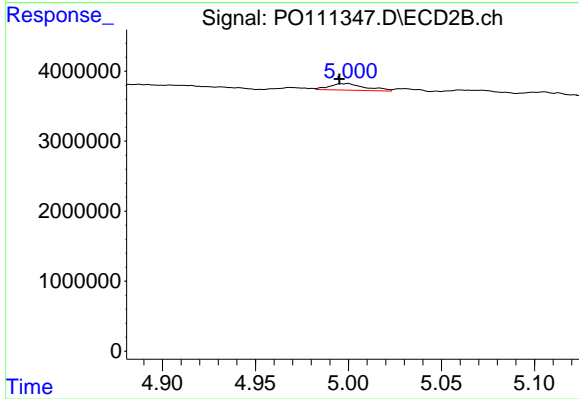
#21 AR-1248-1

R.T.: 4.764 min  
 Delta R.T.: 0.005 min  
 Response: 2485026  
 Conc: 19.16 ng/ml



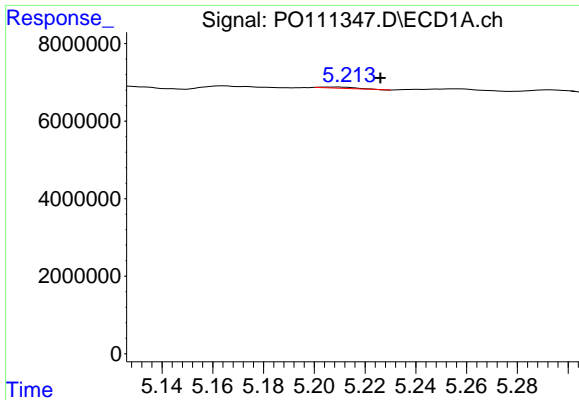
#22 AR-1248-2

R.T.: 5.014 min  
 Delta R.T.: 0.003 min  
 Response: 3660952  
 Conc: 18.26 ng/ml



#22 AR-1248-2

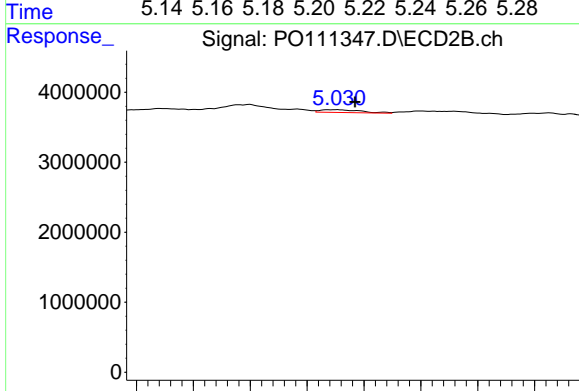
R.T.: 4.999 min  
 Delta R.T.: 0.004 min  
 Response: 1262553  
 Conc: 7.18 ng/ml



#23 AR-1248-3

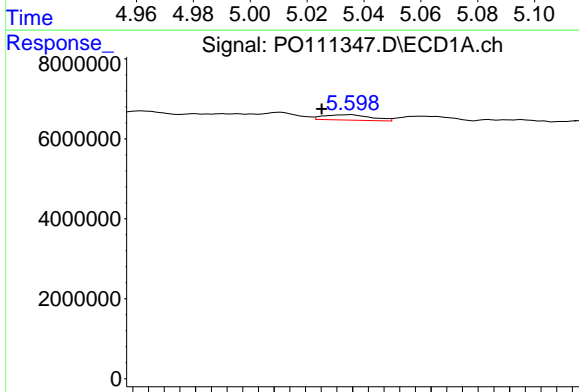
R.T.: 5.208 min  
 Delta R.T.: -0.018 min  
 Response: 292161  
 Conc: 1.14 ng/ml

Instrument :  
 ECD\_O  
 ClientSampleId :  
 KZZ331H-1-1



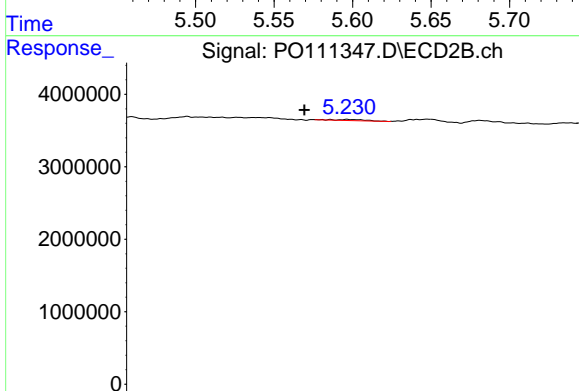
#23 AR-1248-3

R.T.: 5.030 min  
 Delta R.T.: -0.007 min  
 Response: 398653  
 Conc: 2.12 ng/ml



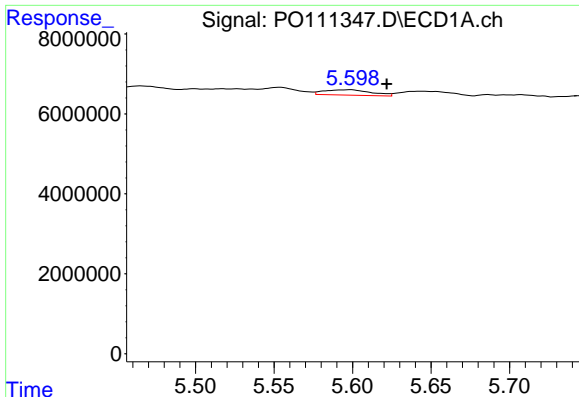
#24 AR-1248-4

R.T.: 5.599 min  
 Delta R.T.: 0.019 min  
 Response: 2798432  
 Conc: 7.73 ng/ml



#24 AR-1248-4

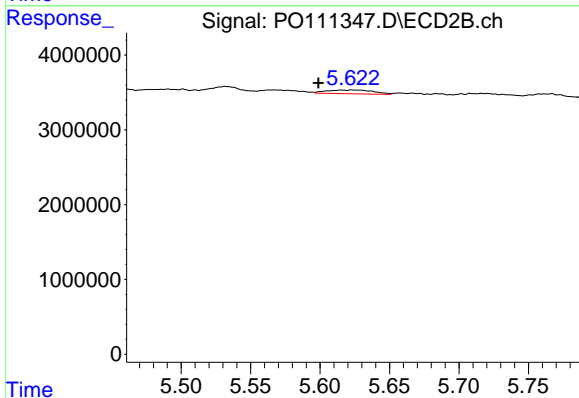
R.T.: 5.231 min  
 Delta R.T.: 0.024 min  
 Response: 194489  
 Conc: 0.88 ng/ml



#25 AR-1248-5

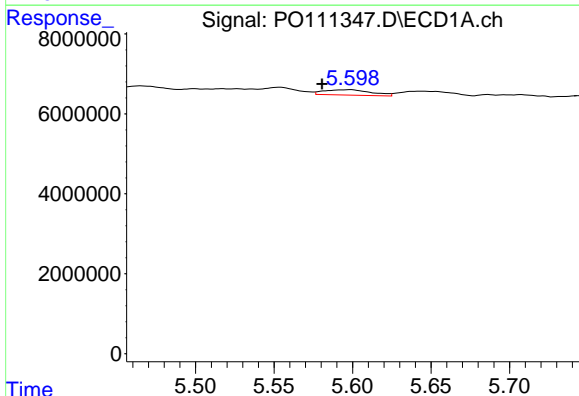
R.T.: 5.599 min  
 Delta R.T.: -0.023 min  
 Response: 2798432  
 Conc: 10.68 ng/ml

Instrument :  
 ECD\_O  
 ClientSampleId :  
 KZZ331H-1-1



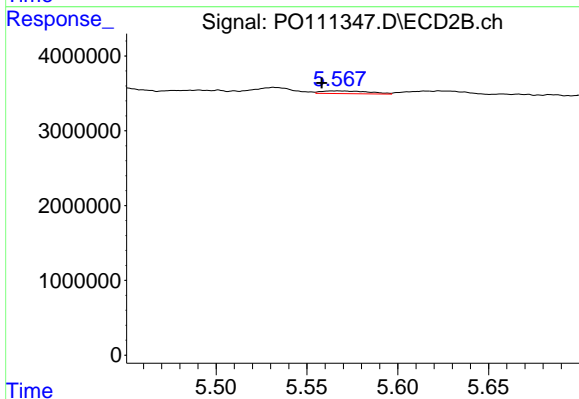
#25 AR-1248-5

R.T.: 5.623 min  
 Delta R.T.: 0.024 min  
 Response: 1185641  
 Conc: 5.43 ng/ml



#26 AR-1254-1

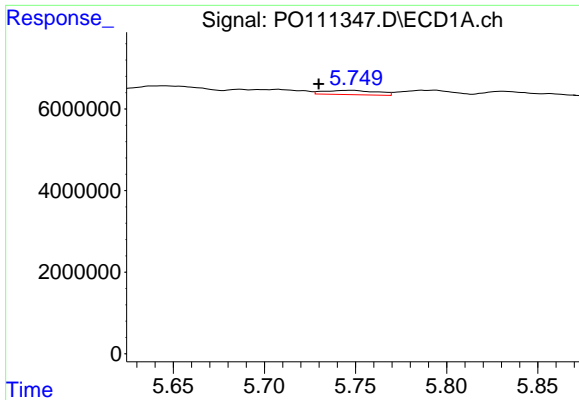
R.T.: 5.599 min  
 Delta R.T.: 0.018 min  
 Response: 2798432  
 Conc: 7.37 ng/ml



#26 AR-1254-1

R.T.: 5.567 min  
 Delta R.T.: 0.009 min  
 Response: 665050  
 Conc: 2.05 ng/ml

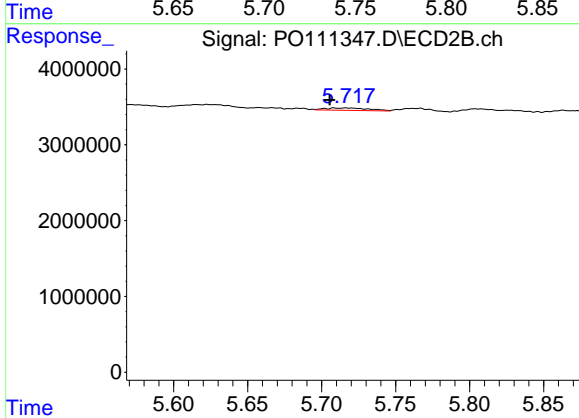




#27 AR-1254-2

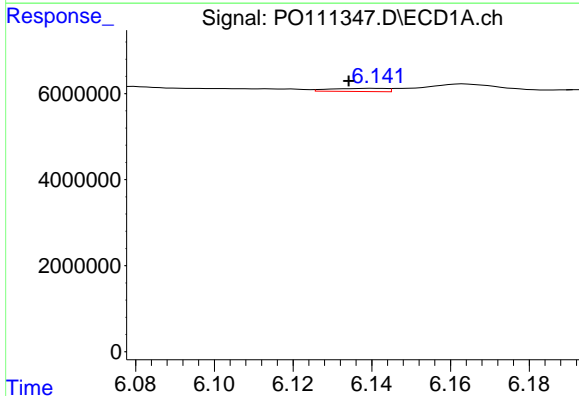
R.T.: 5.748 min  
 Delta R.T.: 0.018 min  
 Response: 2088071  
 Conc: 6.39 ng/ml

Instrument :  
 ECD\_O  
 ClientSampleId :  
 KZZ331H-1-1



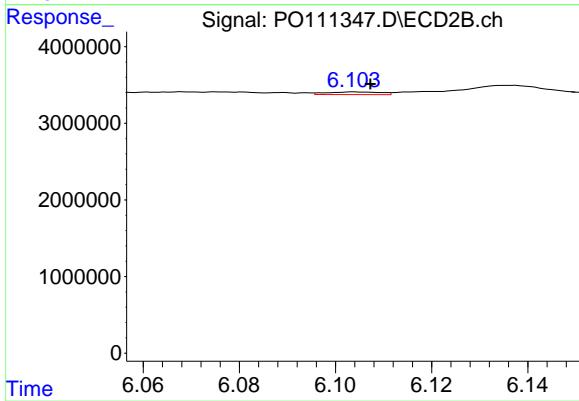
#27 AR-1254-2

R.T.: 5.717 min  
 Delta R.T.: 0.011 min  
 Response: 674840  
 Conc: 2.38 ng/ml



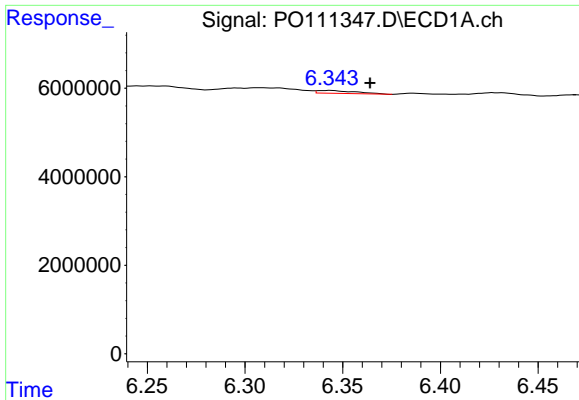
#28 AR-1254-3

R.T.: 6.140 min  
 Delta R.T.: 0.006 min  
 Response: 737458  
 Conc: 1.40 ng/ml



#28 AR-1254-3

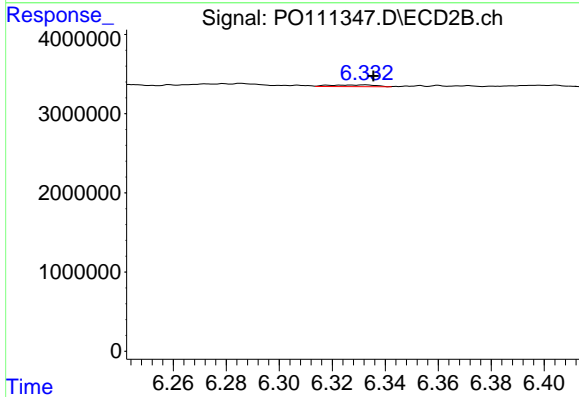
R.T.: 6.104 min  
 Delta R.T.: -0.003 min  
 Response: 278464  
 Conc: 0.65 ng/ml



#29 AR-1254-4

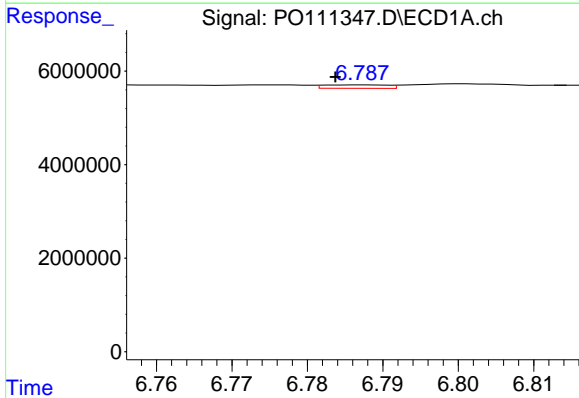
R.T.: 6.344 min  
 Delta R.T.: -0.020 min  
 Response: 887205  
 Conc: 2.64 ng/ml

Instrument :  
 ECD\_O  
 ClientSampleId :  
 KZZ331H-1-1



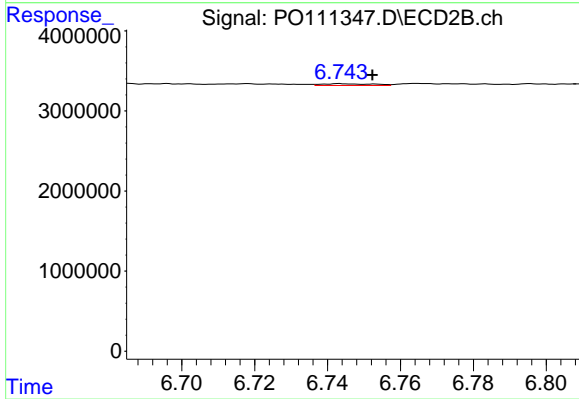
#29 AR-1254-4

R.T.: 6.332 min  
 Delta R.T.: -0.003 min  
 Response: 247993  
 Conc: 1.00 ng/ml



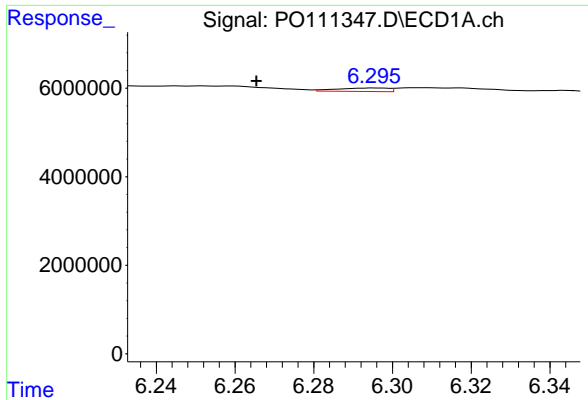
#30 AR-1254-5

R.T.: 6.787 min  
 Delta R.T.: 0.004 min  
 Response: 439156  
 Conc: 0.93 ng/ml



#30 AR-1254-5

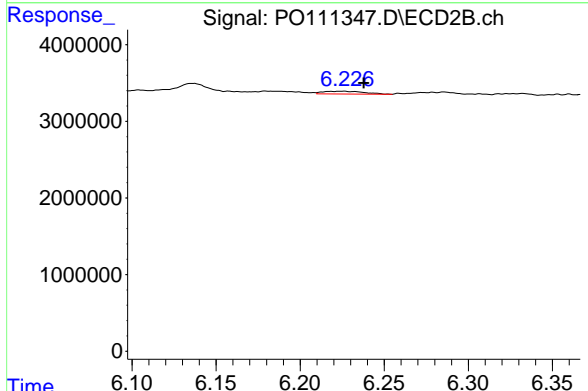
R.T.: 6.744 min  
 Delta R.T.: -0.009 min  
 Response: 213299  
 Conc: 0.62 ng/ml



#31 AR-1260-1

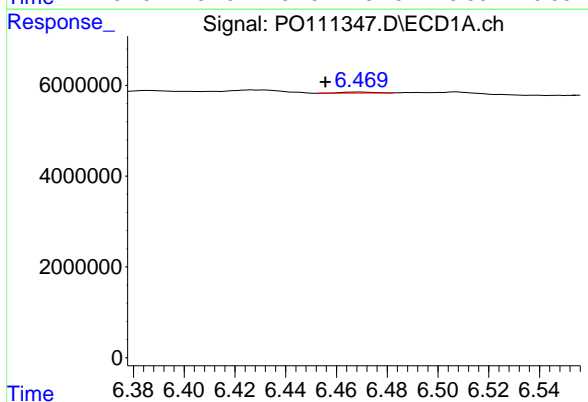
R.T.: 6.296 min  
 Delta R.T.: 0.030 min  
 Response: 732721  
 Conc: 2.40 ng/ml

Instrument :  
 ECD\_O  
 ClientSampleId :  
 KZZ331H-1-1



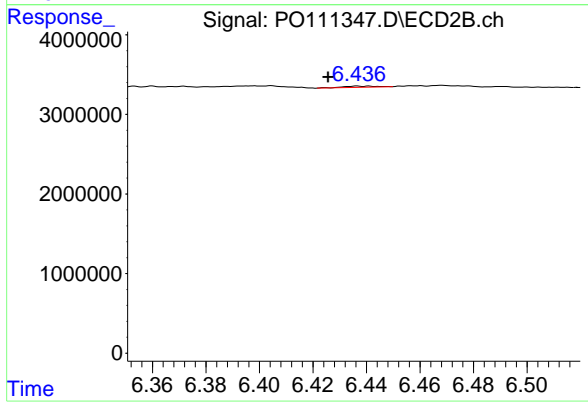
#31 AR-1260-1

R.T.: 6.225 min  
 Delta R.T.: -0.012 min  
 Response: 614975  
 Conc: 2.46 ng/ml



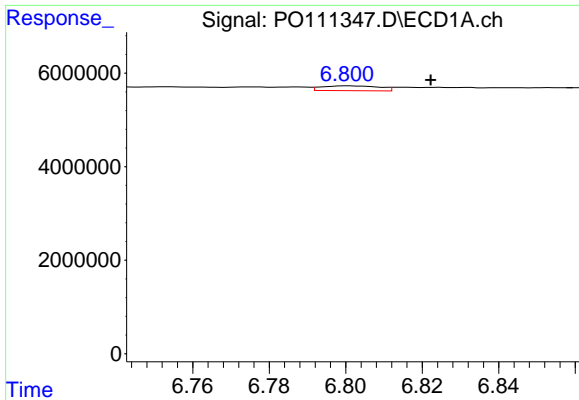
#32 AR-1260-2

R.T.: 6.469 min  
 Delta R.T.: 0.013 min  
 Response: 195872  
 Conc: 0.51 ng/ml



#32 AR-1260-2

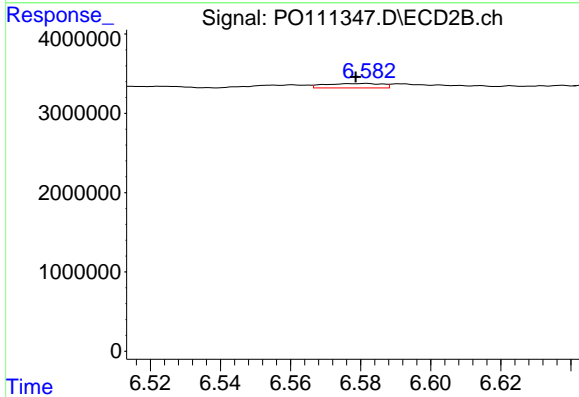
R.T.: 6.437 min  
 Delta R.T.: 0.011 min  
 Response: 124528  
 Conc: 0.42 ng/ml



#33 AR-1260-3

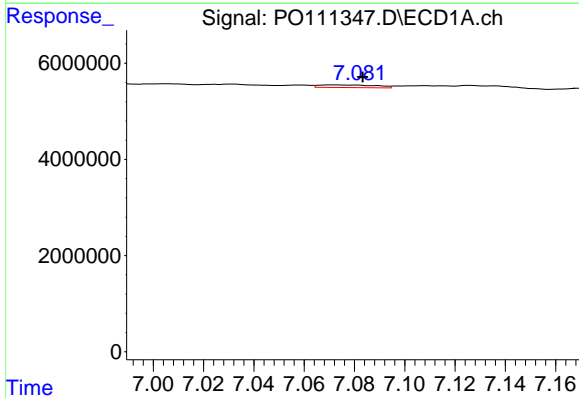
R.T.: 6.800 min  
 Delta R.T.: -0.022 min  
 Response: 1084998  
 Conc: 3.11 ng/ml

Instrument :  
 ECD\_O  
 ClientSampleId :  
 KZZ331H-1-1



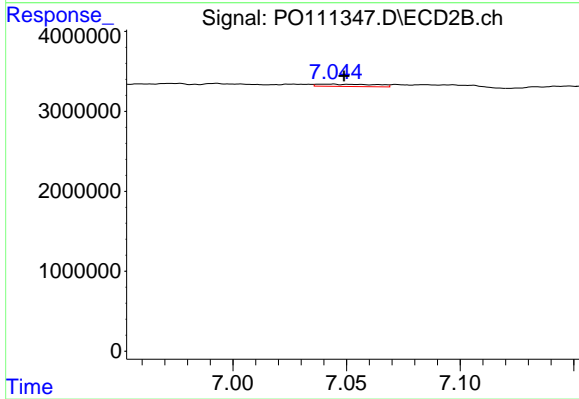
#33 AR-1260-3

R.T.: 6.581 min  
 Delta R.T.: 0.003 min  
 Response: 627459  
 Conc: 2.19 ng/ml



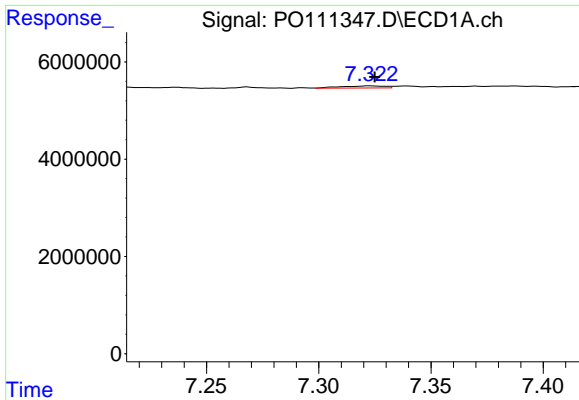
#34 AR-1260-4

R.T.: 7.072 min  
 Delta R.T.: -0.012 min  
 Response: 862457  
 Conc: 3.08 ng/ml



#34 AR-1260-4

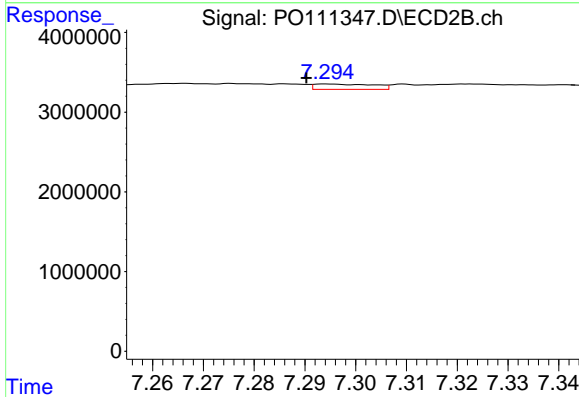
R.T.: 7.040 min  
 Delta R.T.: -0.009 min  
 Response: 508877  
 Conc: 2.53 ng/ml



#35 AR-1260-5

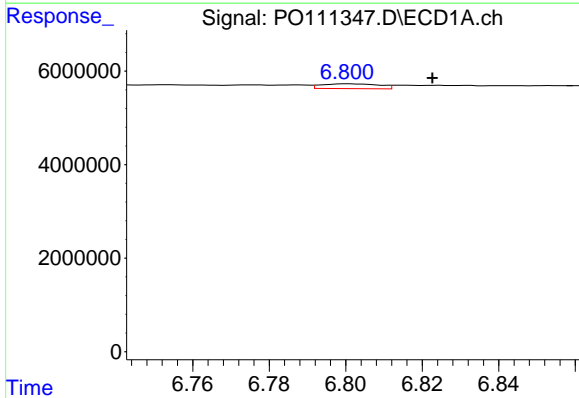
R.T.: 7.323 min  
 Delta R.T.: -0.002 min  
 Response: 594607  
 Conc: 0.83 ng/ml

Instrument :  
 ECD\_O  
 ClientSampleId :  
 KZZ331H-1-1



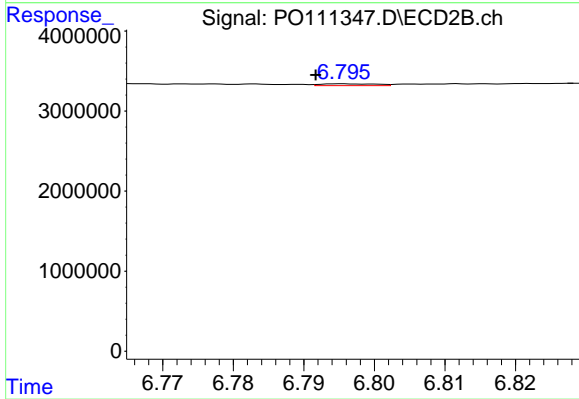
#35 AR-1260-5

R.T.: 7.294 min  
 Delta R.T.: 0.004 min  
 Response: 545464  
 Conc: 1.19 ng/ml



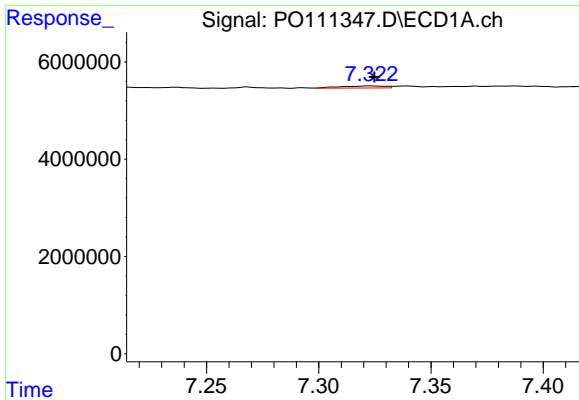
#36 AR-1262-1

R.T.: 6.800 min  
 Delta R.T.: -0.022 min  
 Response: 1084998  
 Conc: 2.23 ng/ml



#36 AR-1262-1

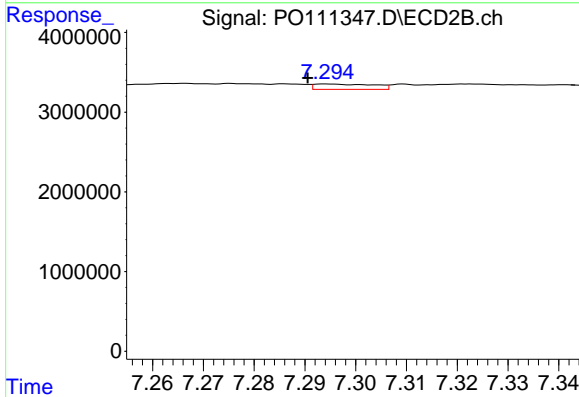
R.T.: 6.796 min  
 Delta R.T.: 0.004 min  
 Response: 129279  
 Conc: 0.38 ng/ml



#37 AR-1262-2

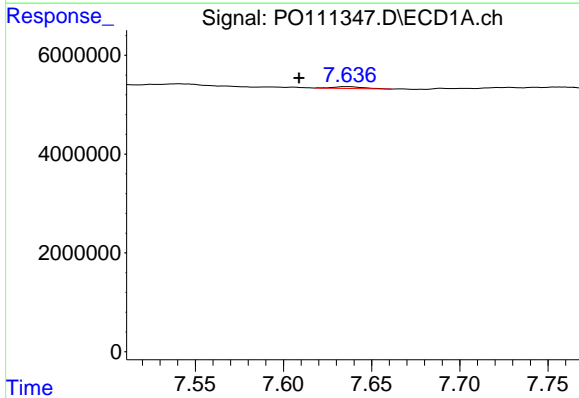
R.T.: 7.323 min  
 Delta R.T.: -0.002 min  
 Response: 594607  
 Conc: 0.74 ng/ml

Instrument :  
 ECD\_O  
 ClientSampleId :  
 KZZ331H-1-1



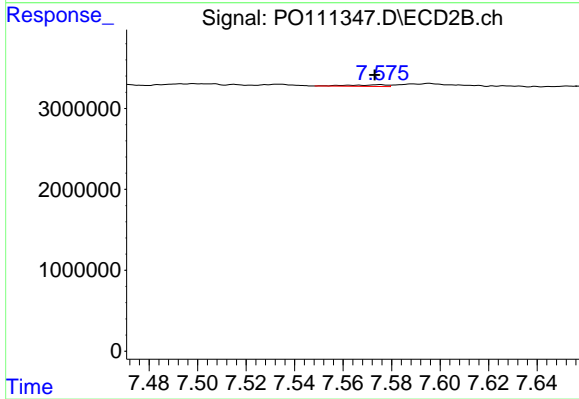
#37 AR-1262-2

R.T.: 7.294 min  
 Delta R.T.: 0.004 min  
 Response: 545464  
 Conc: 1.08 ng/ml



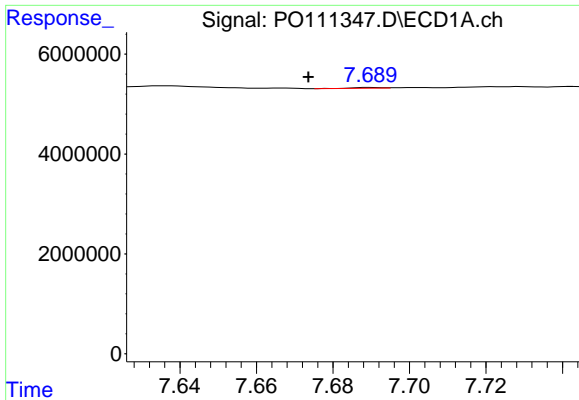
#38 AR-1262-3

R.T.: 7.636 min  
 Delta R.T.: 0.027 min  
 Response: 453813  
 Conc: 1.34 ng/ml



#38 AR-1262-3

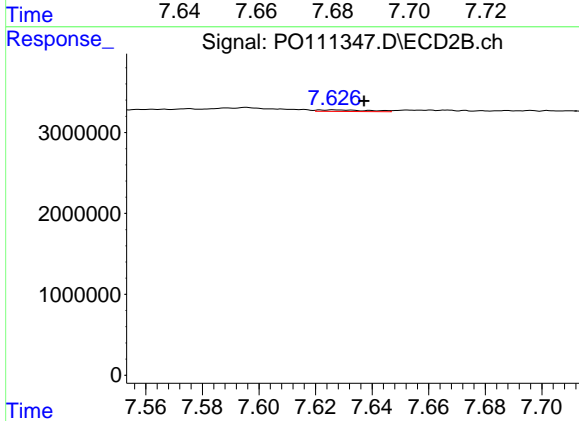
R.T.: 7.575 min  
 Delta R.T.: 0.002 min  
 Response: 221420  
 Conc: 1.18 ng/ml



#39 AR-1262-4

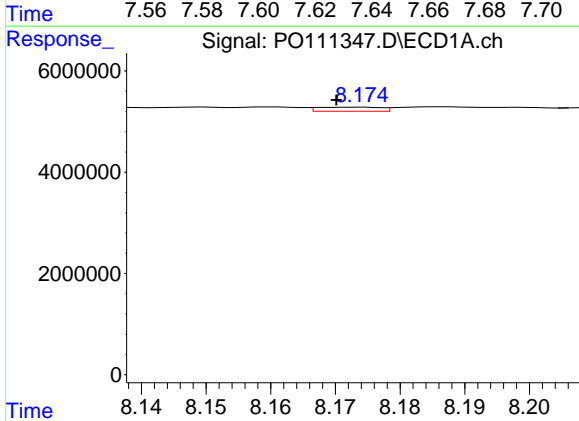
R.T.: 7.690 min  
 Delta R.T.: 0.016 min  
 Response: 66675  
 Conc: 0.11 ng/ml

Instrument :  
 ECD\_O  
 ClientSampleId :  
 KZZ331H-1-1



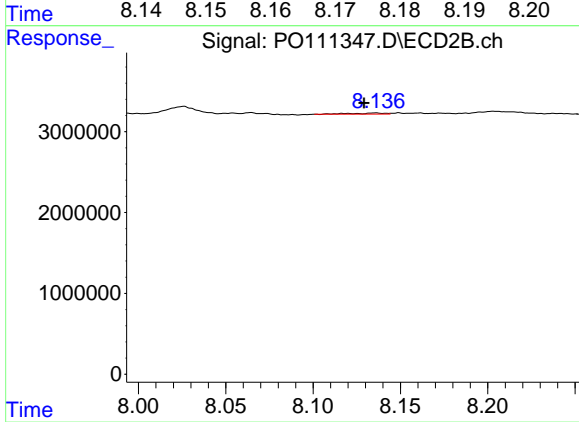
#39 AR-1262-4

R.T.: 7.627 min  
 Delta R.T.: -0.010 min  
 Response: 248174  
 Conc: 0.75 ng/ml



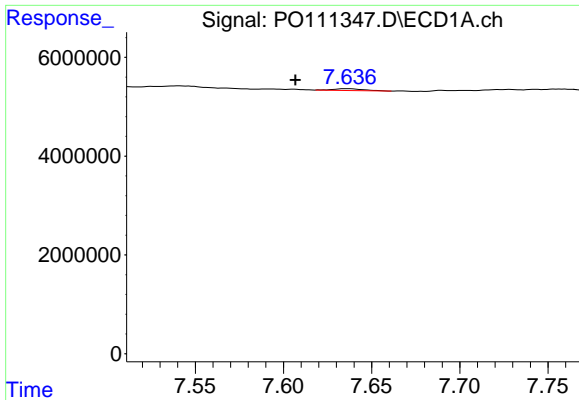
#40 AR-1262-5

R.T.: 8.173 min  
 Delta R.T.: 0.003 min  
 Response: 545748  
 Conc: 1.91 ng/ml



#40 AR-1262-5

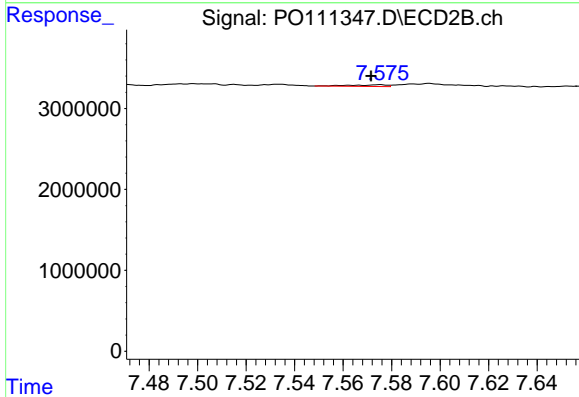
R.T.: 8.136 min  
 Delta R.T.: 0.007 min  
 Response: 169873  
 Conc: 1.51 ng/ml



#41 AR-1268-1

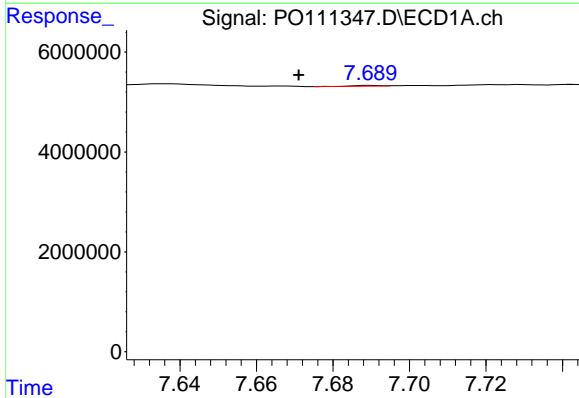
R.T.: 7.636 min  
 Delta R.T.: 0.029 min  
 Response: 453813  
 Conc: 0.47 ng/ml

Instrument :  
 ECD\_O  
 ClientSampleId :  
 KZZ331H-1-1



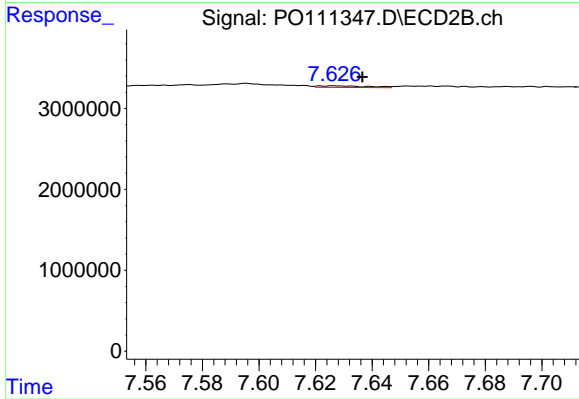
#41 AR-1268-1

R.T.: 7.575 min  
 Delta R.T.: 0.004 min  
 Response: 221420  
 Conc: 0.42 ng/ml



#42 AR-1268-2

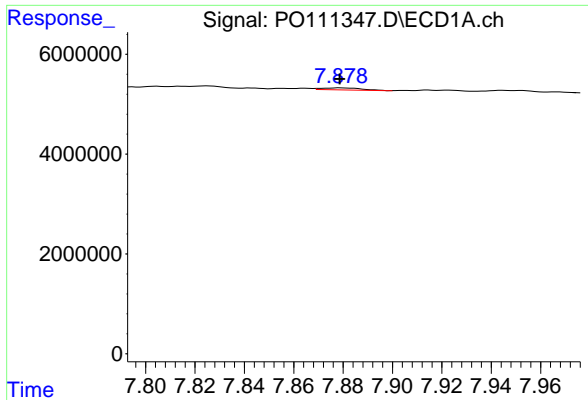
R.T.: 7.690 min  
 Delta R.T.: 0.019 min  
 Response: 66675  
 Conc: 0.07 ng/ml



#42 AR-1268-2

R.T.: 7.627 min  
 Delta R.T.: -0.010 min  
 Response: 248174  
 Conc: 0.51 ng/ml

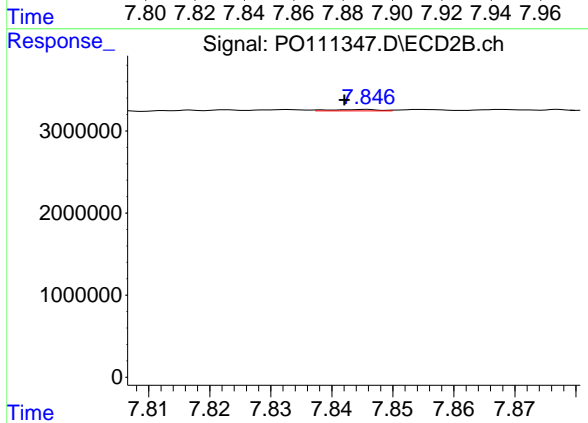




#43 AR-1268-3

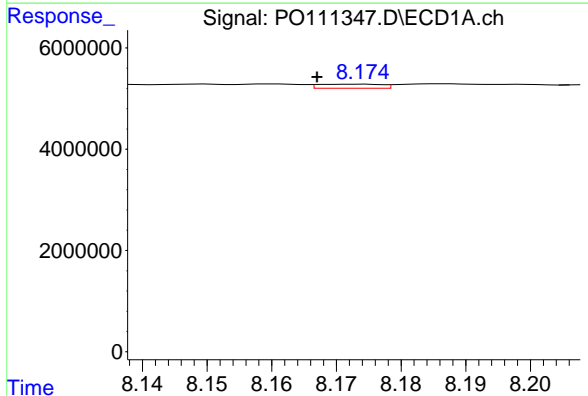
R.T.: 7.879 min  
 Delta R.T.: 0.000 min  
 Response: 450299  
 Conc: 0.59 ng/ml

Instrument :  
 ECD\_O  
 ClientSampleId :  
 KZZ331H-1-1



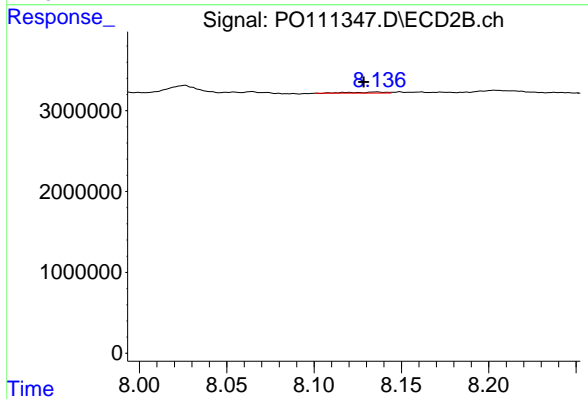
#43 AR-1268-3

R.T.: 7.845 min  
 Delta R.T.: 0.003 min  
 Response: 95807  
 Conc: 0.27 ng/ml



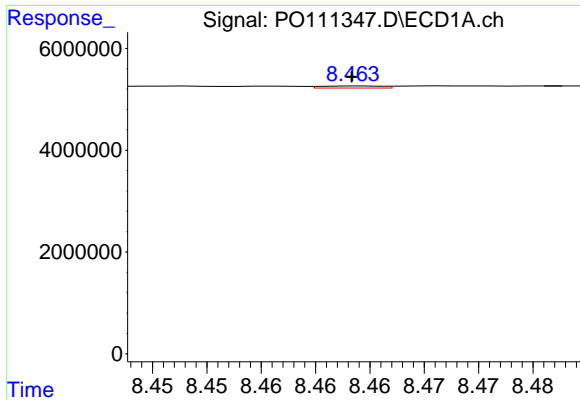
#44 AR-1268-4

R.T.: 8.173 min  
 Delta R.T.: 0.006 min  
 Response: 545748  
 Conc: 1.67 ng/ml



#44 AR-1268-4

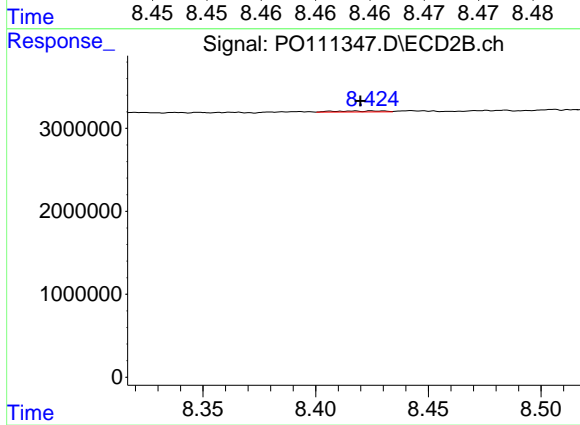
R.T.: 8.136 min  
 Delta R.T.: 0.008 min  
 Response: 169873  
 Conc: 1.33 ng/ml



#45 AR-1268-5

R.T.: 8.464 min  
 Delta R.T.: 0.000 min  
 Response: 159778  
 Conc: 0.07 ng/ml

Instrument :  
 ECD\_O  
 ClientSampleId :  
 KZZ331H-1-1



#45 AR-1268-5

R.T.: 8.425 min  
 Delta R.T.: 0.005 min  
 Response: 182706  
 Conc: 0.24 ng/ml