

Data Path : Z:\pestpcbsrv\HPCHEM1\ECD_0\Data\P0060121\
 Data File : P0078305.D
 Signal(s) : Signal #1: ECD1A.CH Signal #2: ECD2B.CH
 Acq On : 01 Jun 2021 17:08
 Operator : DD\AJ
 Sample : M2571-01
 Misc :
 ALS Vial : 22 Sample Multiplier: 1

Instrument :
 ECD_0
 ClientSampleId :
 SA-1

Integration File signal 1: autoint1.e
 Integration File signal 2: autoint2.e
 Quant Time: Jun 02 01:01:02 2021
 Quant Method : Z:\pestpcbsrv\HPCHEM1\ECD_0\methods\P0051821.M
 Quant Title : GC EXTRACTABLES
 QLast Update : Wed May 19 06:28:32 2021
 Response via : Initial Calibration
 Integrator: ChemStation 6890 Scale Mode: Small noise peaks clipped

Volume Inj. : 2 µl
 Signal #1 Phase : ZB-MR1 Signal #2 Phase: ZB-MR2
 Signal #1 Info : 30Mx0.32mmx 0.50µ Signal #2 Info : 30M x 0.32mm x 0.25µm

Compound	RT#1	RT#2	Resp#1	Resp#2	ng/ml	ng/ml

System Monitoring Compounds						
1) SA Tetrachlo...	4.340	3.618	1752855	787099	23.717	26.049
2) SA Decachlor...	9.949	8.805	1210122	717340	24.476	24.670

Target Compounds

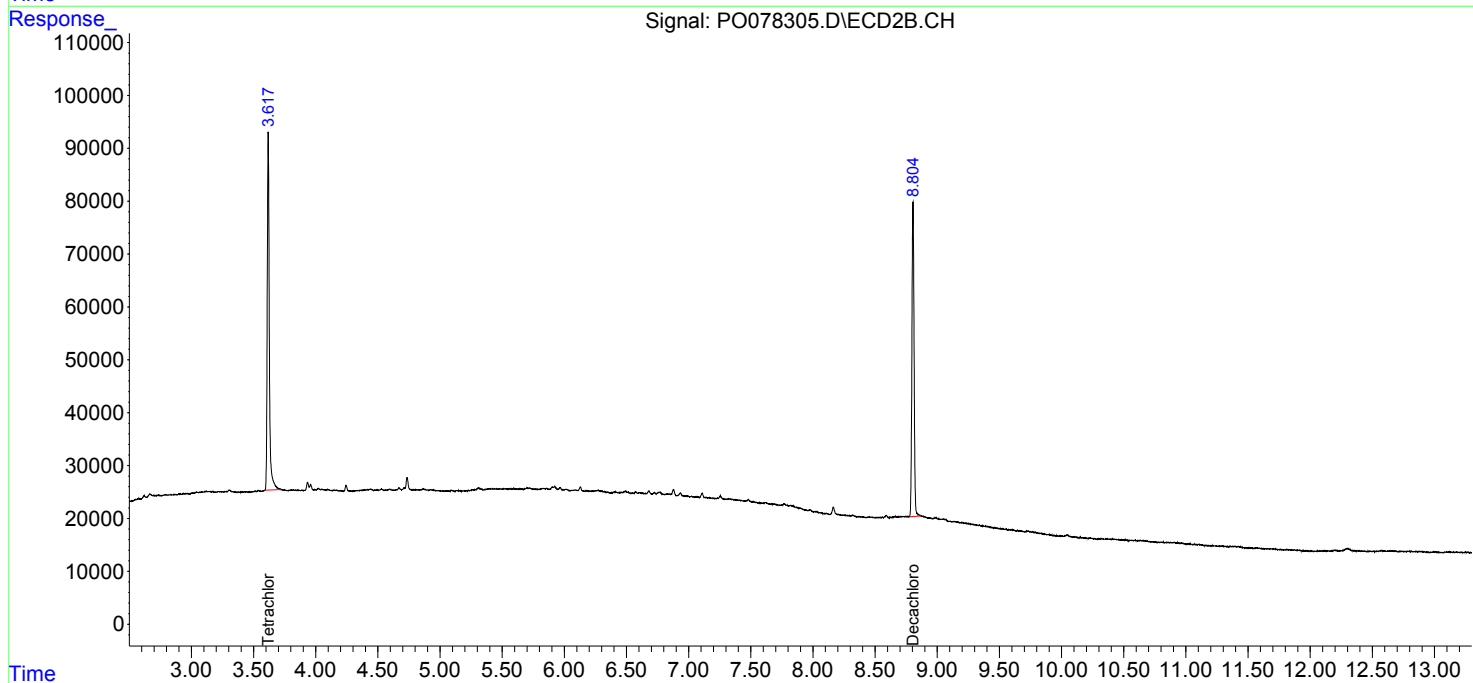
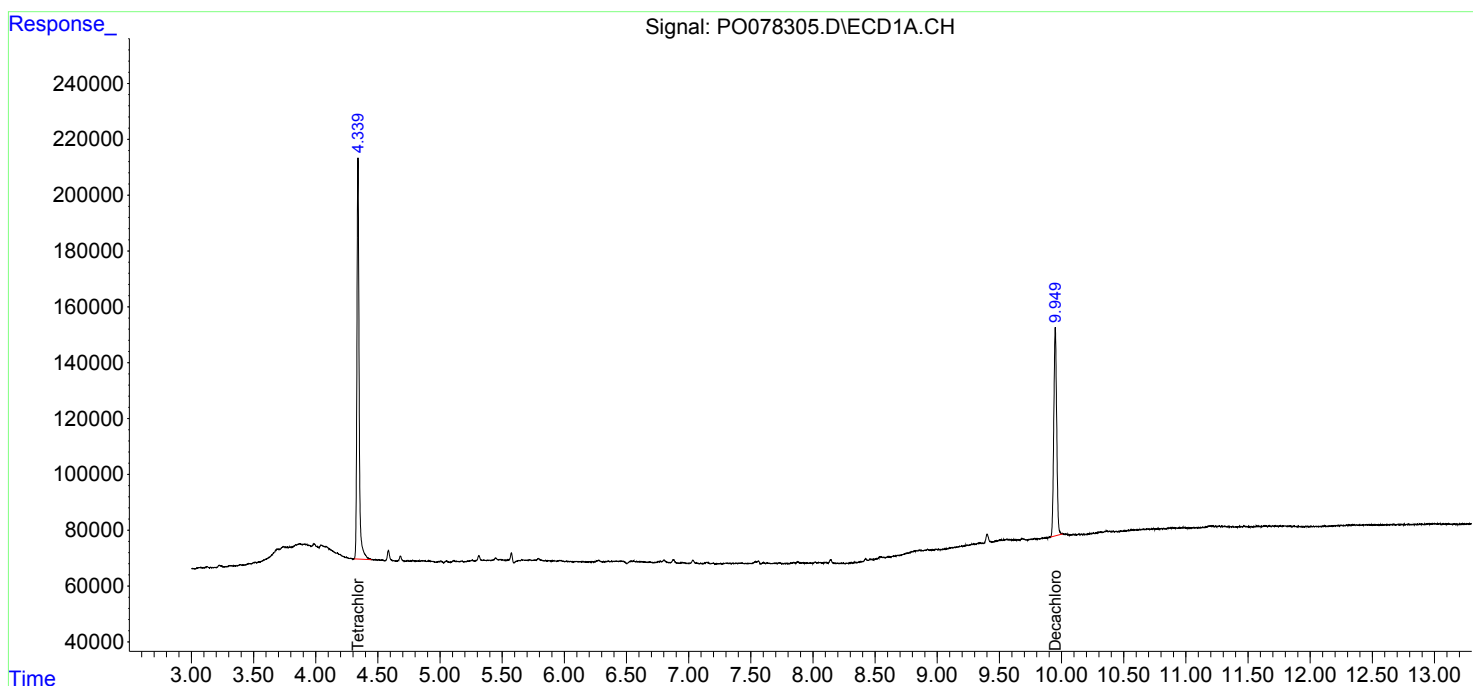
(f)=RT Delta > 1/2 Window (#)=Amounts differ by > 25% (m)=manual int.

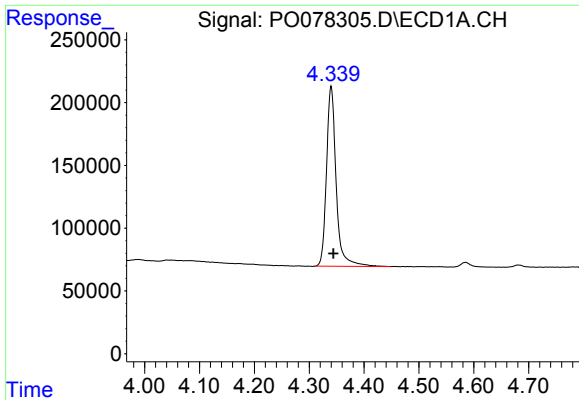
Data Path : Z:\pestpcbsrv\HPCHEM1\ECD_O\Data\P0060121\
 Data File : P0078305.D
 Signal(s) : Signal #1: ECD1A.CH Signal #2: ECD2B.CH
 Acq On : 01 Jun 2021 17:08
 Operator : DD\AJ
 Sample : M2571-01
 Misc :
 ALS Vial : 22 Sample Multiplier: 1

Instrument :
 ECD_O
 ClientSampleID :
 SA-1

Integration File signal 1: autoint1.e
 Integration File signal 2: autoint2.e
 Quant Time: Jun 02 01:01:02 2021
 Quant Method : Z:\pestpcbsrv\HPCHEM1\ECD_O\methods\P0051821.M
 Quant Title : GC EXTRACTABLES
 QLast Update : Wed May 19 06:28:32 2021
 Response via : Initial Calibration
 Integrator: ChemStation 6890 Scale Mode: Small noise peaks clipped

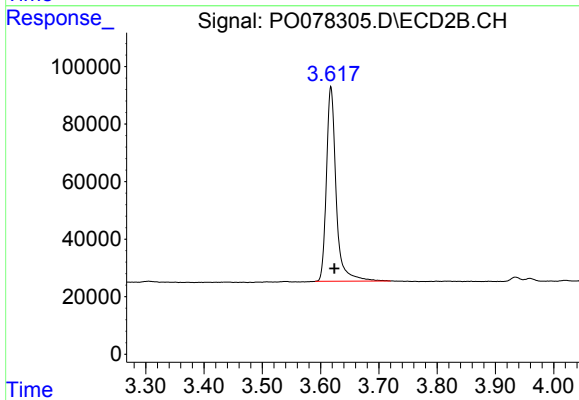
Volume Inj. : 2 µl
 Signal #1 Phase : ZB-MR1 Signal #2 Phase: ZB-MR2
 Signal #1 Info : 30Mx0.32mmx 0.50µ Signal #2 Info : 30M x 0.32mm x 0.25µm



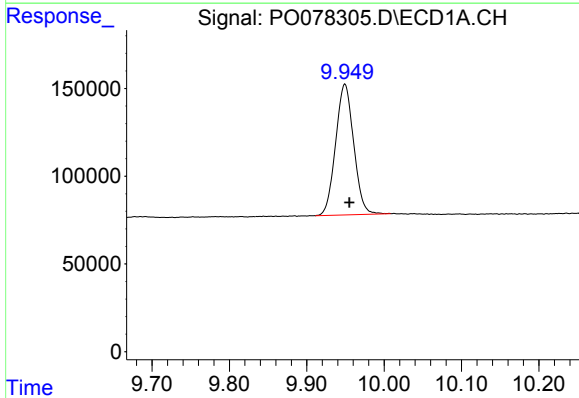


#1 Tetrachloro-m-xylene
 R.T.: 4.340 min
 Delta R.T.: -0.004 min
 Response: 1752855
 Conc: 23.72 ng/ml

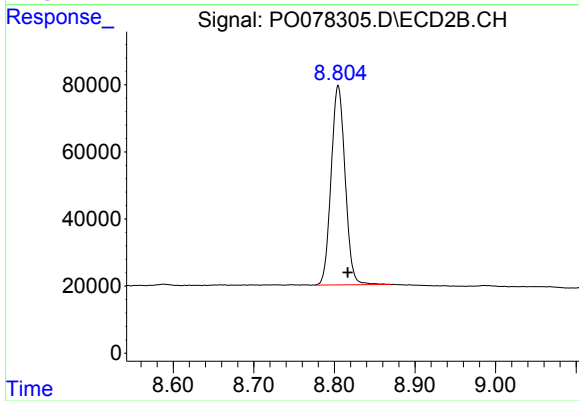
Instrument :
 ECD_O
 ClientSampled :
 SA-1



#1 Tetrachloro-m-xylene
 R.T.: 3.618 min
 Delta R.T.: -0.006 min
 Response: 787099
 Conc: 26.05 ng/ml



#2 Decachlorobiphenyl
 R.T.: 9.949 min
 Delta R.T.: -0.006 min
 Response: 1210122
 Conc: 24.48 ng/ml



#2 Decachlorobiphenyl
 R.T.: 8.805 min
 Delta R.T.: -0.012 min
 Response: 717340
 Conc: 24.67 ng/ml