

Data Path : Z:\pestpcbsrv\HPCHEM1\ECD_0\Data\P0060321\
 Data File : P0078408.D
 Signal(s) : Signal #1: ECD1A.CH Signal #2: ECD2B.CH
 Acq On : 03 Jun 2021 16:08
 Operator : DD\AJ
 Sample : I.BLK
 Misc :
 ALS Vial : 2 Sample Multiplier: 1

Instrument :
 ECD_0
 ClientSampleId :
 I.BLK

Integration File signal 1: autoint1.e
 Integration File signal 2: autoint2.e
 Quant Time: Jun 04 04:50:44 2021
 Quant Method : Z:\pestpcbsrv\HPCHEM1\ECD_0\methods\P0051821.M
 Quant Title : GC EXTRACTABLES
 QLast Update : Wed May 19 06:28:32 2021
 Response via : Initial Calibration
 Integrator: ChemStation 6890 Scale Mode: Small noise peaks clipped

Volume Inj. : 2 µl
 Signal #1 Phase : ZB-MR1 Signal #2 Phase: ZB-MR2
 Signal #1 Info : 30Mx0.32mmx 0.50µ Signal #2 Info : 30M x 0.32mm x 0.25µm

Compound	RT#1	RT#2	Resp#1	Resp#2	ng/ml	ng/ml

System Monitoring Compounds						
1) SA Tetrachlo...	4.339	3.616	1639521	716899	22.183	23.726
2) SA Decachlor...	9.947	8.803	995671	585641	20.139	20.141
Target Compounds						
9) L2 AR-1221-2	4.681	3.958f	18840	10470	30.656	38.007

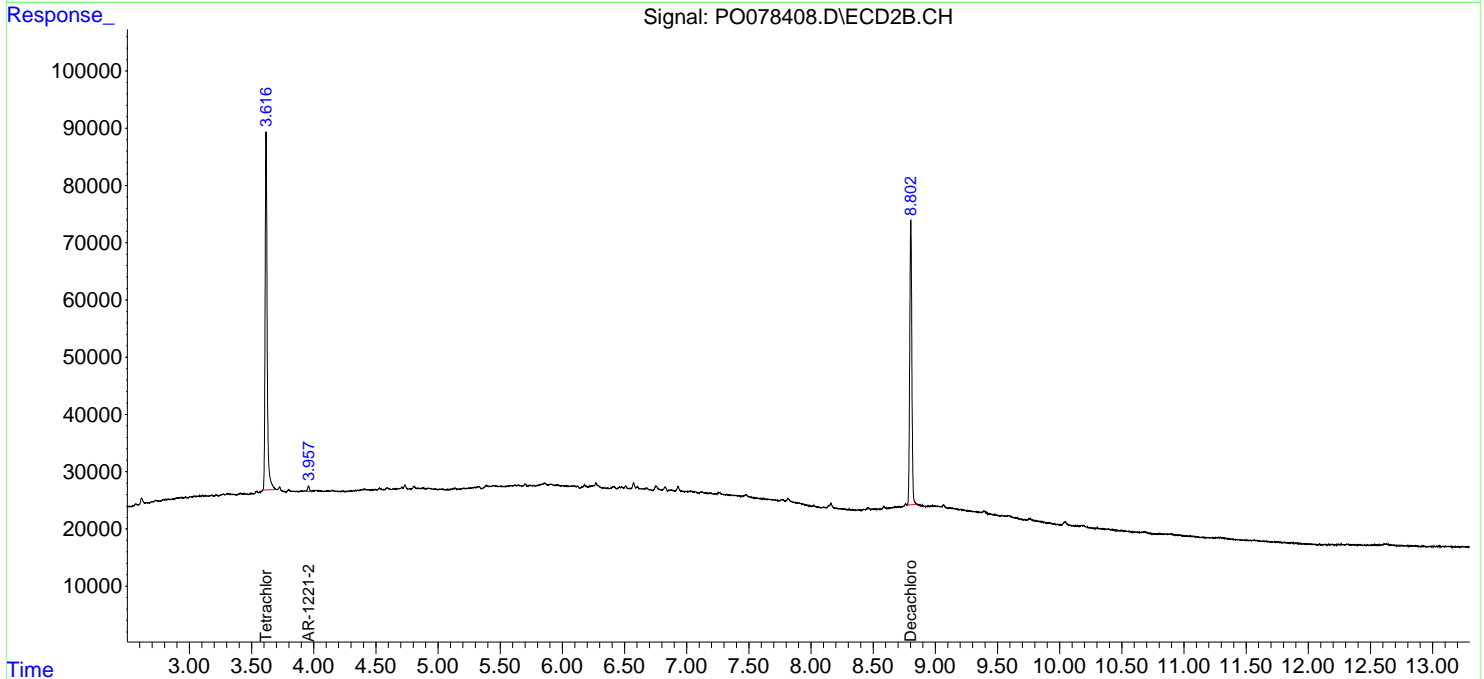
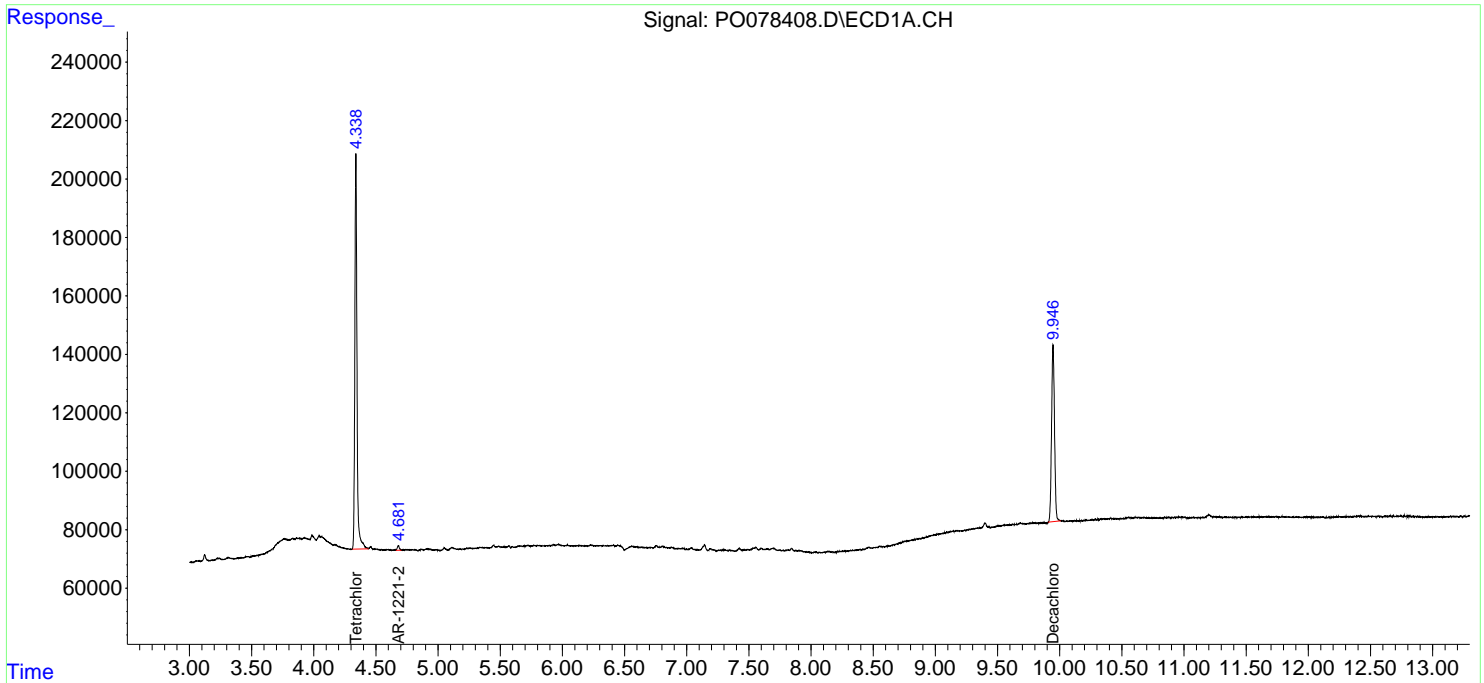
(f)=RT Delta > 1/2 Window (#)=Amounts differ by > 25% (m)=manual int.

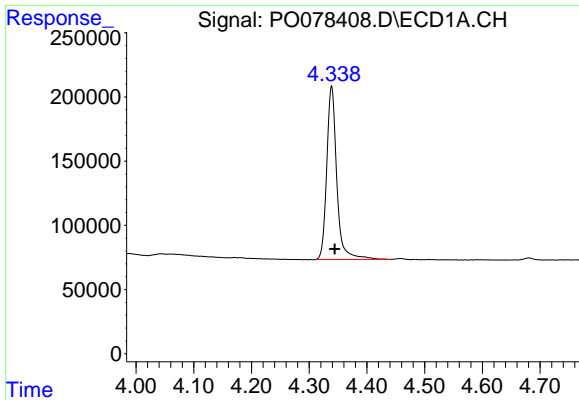
Data Path : Z:\pestpcbsrv\HPCHEM1\ECD_0\Data\P0060321\
 Data File : P0078408.D
 Signal(s) : Signal #1: ECD1A.CH Signal #2: ECD2B.CH
 Acq On : 03 Jun 2021 16:08
 Operator : DD\AJ
 Sample : I.BLK
 Misc :
 ALS Vial : 2 Sample Multiplier: 1

Instrument :
 ECD_O
 ClientSampled :
 I.BLK

Integration File signal 1: autoint1.e
 Integration File signal 2: autoint2.e
 Quant Time: Jun 04 04:50:44 2021
 Quant Method : Z:\pestpcbsrv\HPCHEM1\ECD_0\methods\P0051821.M
 Quant Title : GC EXTRACTABLES
 QLast Update : Wed May 19 06:28:32 2021
 Response via : Initial Calibration
 Integrator: ChemStation 6890 Scale Mode: Small noise peaks clipped

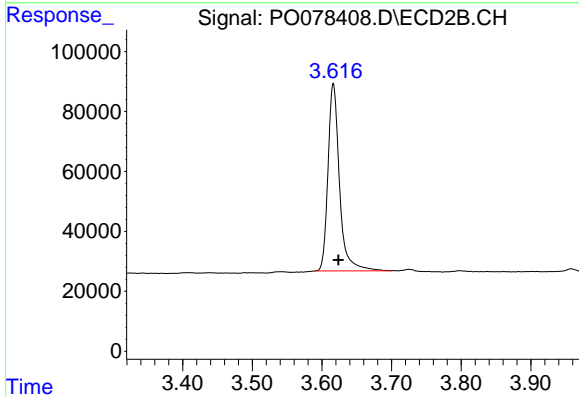
Volume Inj. : 2 µl
 Signal #1 Phase : ZB-MR1 Signal #2 Phase: ZB-MR2
 Signal #1 Info : 30Mx0.32mmx 0.50µ Signal #2 Info : 30M x 0.32mm x 0.25µm



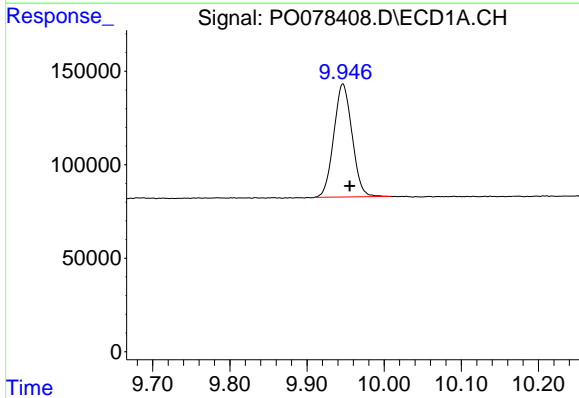


#1 Tetrachloro-m-xylene
 R.T.: 4.339 min
 Delta R.T.: -0.005 min
 Response: 1639521
 Conc: 22.18 ng/ml

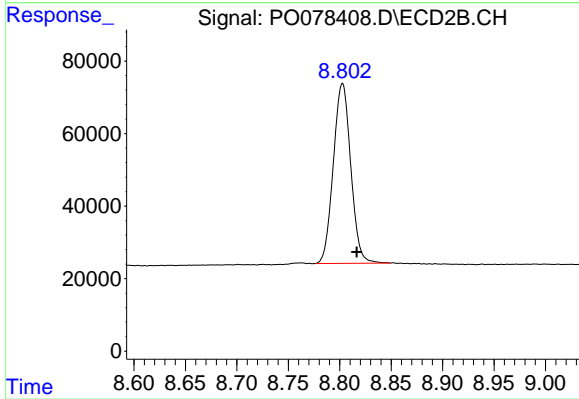
Instrument :
 ECD_O
 ClientSampled :
 I.BLK



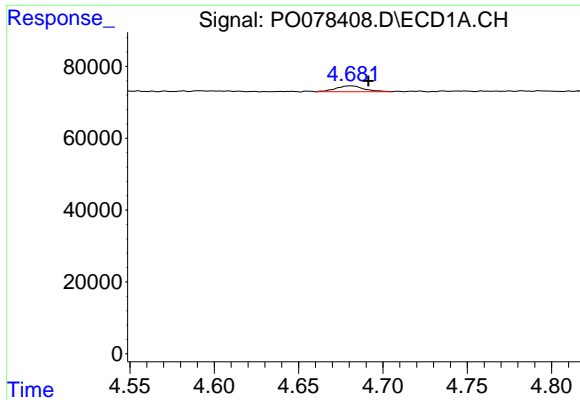
#1 Tetrachloro-m-xylene
 R.T.: 3.616 min
 Delta R.T.: -0.007 min
 Response: 716899
 Conc: 23.73 ng/ml



#2 Decachlorobiphenyl
 R.T.: 9.947 min
 Delta R.T.: -0.009 min
 Response: 995671
 Conc: 20.14 ng/ml



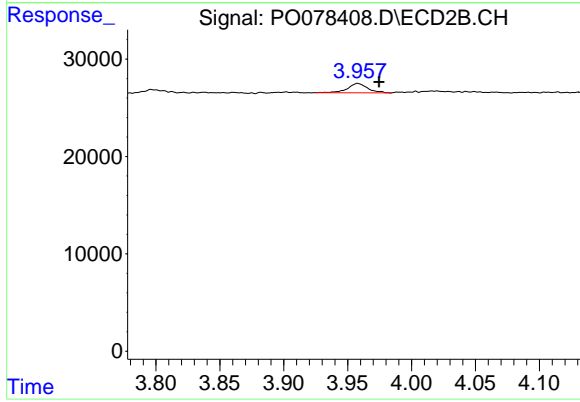
#2 Decachlorobiphenyl
 R.T.: 8.803 min
 Delta R.T.: -0.014 min
 Response: 585641
 Conc: 20.14 ng/ml



#9 AR-1221-2

R.T.: 4.681 min
Delta R.T.: -0.010 min
Response: 18840
Conc: 30.66 ng/ml

Instrument :
ECD_O
ClientSampleId :
I.BLK



#9 AR-1221-2

R.T.: 3.958 min
Delta R.T.: -0.017 min
Response: 10470
Conc: 38.01 ng/ml