

Data Path : Z:\pestpcbsrv\HPCHEM1\ECD_0\Data\P0060321\
 Data File : P0078420.D
 Signal(s) : Signal #1: ECD1A.CH Signal #2: ECD2B.CH
 Acq On : 03 Jun 2021 20:10
 Operator : DD\AJ
 Sample : AR1242CCC500
 Misc :
 ALS Vial : 4 Sample Multiplier: 1

Instrument :
 ECD_O
 ClientSampled :
 AR1242CCC500

Integration File signal 1: autoint1.e
 Integration File signal 2: autoint2.e
 Quant Time: Jun 04 04:53:43 2021
 Quant Method : Z:\pestpcbsrv\HPCHEM1\ECD_0\methods\P0051821.M
 Quant Title : GC EXTRACTABLES
 QLast Update : Wed May 19 06:28:32 2021
 Response via : Initial Calibration
 Integrator: ChemStation 6890 Scale Mode: Small noise peaks clipped

Volume Inj. : 2 µl
 Signal #1 Phase : ZB-MR1 Signal #2 Phase: ZB-MR2
 Signal #1 Info : 30Mx0.32mmx 0.50µ Signal #2 Info : 30M x 0.32mm x 0.25µm

Compound	RT#1	RT#2	Resp#1	Resp#2	ng/ml	ng/ml
System Monitoring Compounds						
1) SA Tetrachlo...	4.337	3.616	3636143	1590106	49.198	52.624
2) SA Decachlor...	9.946	8.802	2176446	1224200	44.021	42.101
Target Compounds						
3) L1 AR-1016-1	5.633	4.862	914383	602234	375.368	551.581 #
4) L1 AR-1016-2	5.654	4.862	1442752	602234	404.664	387.386
5) L1 AR-1016-3	5.719	5.050	1014066	307178	457.626	375.285
6) L1 AR-1016-4	5.824	5.103	848399	260293	486.045	365.928
7) L1 AR-1016-5	6.134	5.326	708383	327617	409.480	371.625
8) L2 AR-1221-1	4.585	3.867	100417	37859	122.004	99.104
9) L2 AR-1221-2	4.682	3.963	138194	62803	224.866	227.986
10) L2 AR-1221-3	4.768	4.050	509606	239184	255.519	268.193
11) L3 AR-1232-1	4.768	4.050	509606	239184	333.159	344.084
12) L3 AR-1232-2	5.342	4.862	702890	602234	891.674	905.277
13) L3 AR-1232-3	5.654	5.050	1442752	307178	993.646	903.915
14) L3 AR-1232-4	5.824	5.145	848399	323250	1181.461	1020.401
15) L3 AR-1232-5	5.923	5.326	597015	327617	1215.928	941.588
16) L4 AR-1242-1	5.633	4.862	914383	602234	497.724	701.161 #
17) L4 AR-1242-2	5.654	4.862	1442752	602234	534.081	497.743
18) L4 AR-1242-3	5.719	5.050	1014066	307178	582.622	476.791
19) L4 AR-1242-4	5.824	5.145	848399	323250	606.860	478.143
20) L4 AR-1242-5	6.594	5.700	744312	411658	556.233	502.017
21) L5 AR-1248-1	5.633	4.862	914383	602234	641.716	934.503 #
22) L5 AR-1248-2	5.923	5.103	597015	260293	314.467	272.288
23) L5 AR-1248-3	6.134	5.145	708383	323250	319.372	336.285
24) L5 AR-1248-4	6.557	5.326	721117	327617	309.806	286.063
25) L5 AR-1248-5	6.594	5.742	744312	333707	328.967	318.469
26) L6 AR-1254-1	6.526	5.700	564012	411658	227.241	238.698
27) L6 AR-1254-2	6.756	5.857	559421	141130	144.161	88.043 #
28) L6 AR-1254-3	7.128	6.270	326530	160776	83.228	67.362
29) L6 AR-1254-4	7.422	6.508	230448	117898	84.858	81.205
30) L6 AR-1254-5	7.844	6.931	77753	44907	26.587	19.757 #
31) L7 AR-1260-1	7.294	6.412	95938	92962	34.187	58.020 #
32) L7 AR-1260-2	7.557	6.603	169463	33951	50.374	17.586 #
33) L7 AR-1260-3	0.000	6.751	0	66385	N.D.	36.184 #
34) L7 AR-1260-4	8.135f	7.265f	47446	18504	17.712	12.275 #
35) L7 AR-1260-5	0.000	7.475	0	64475	N.D.	18.489 #
36) L8 AR-1262-1	0.000	6.931	0	44907	N.D.	38.271 #
37) L8 AR-1262-2	0.000	7.475f	0	64475	N.D.	16.528 #
38) L8 AR-1262-3	8.748	0.000	16774	0	4.153	N.D. #
39) L8 AR-1262-4	0.000	7.816f	0	68567	N.D.	22.864 #
41) L9 AR-1268-1	8.748	0.000	16774	0	2.366	N.D. #
42) L9 AR-1268-2	0.000	7.816f	0	68567	N.D.	16.572 #

Data Path : Z:\pestpcbsrv\HPCHEM1\ECD_0\Data\P0060321\
 Data File : P0078420.D
 Signal(s) : Signal #1: ECD1A.CH Signal #2: ECD2B.CH
 Acq On : 03 Jun 2021 20:10
 Operator : DD\AJ
 Sample : AR1242CCC500
 Misc :
 ALS Vial : 4 Sample Multiplier: 1

Instrument :
 ECD_0
 ClientSampleId :
 AR1242CCC500

Integration File signal 1: autoint1.e
 Integration File signal 2: autoint2.e
 Quant Time: Jun 04 04:53:43 2021
 Quant Method : Z:\pestpcbsrv\HPCHEM1\ECD_0\methods\P0051821.M
 Quant Title : GC EXTRACTABLES
 QLast Update : Wed May 19 06:28:32 2021
 Response via : Initial Calibration
 Integrator: ChemStation 6890 Scale Mode: Small noise peaks clipped

Volume Inj. : 2 µl
 Signal #1 Phase : ZB-MR1 Signal #2 Phase: ZB-MR2
 Signal #1 Info : 30Mx0.32mmx 0.50µ Signal #2 Info : 30M x 0.32mm x 0.25µm

	Compound	RT#1	RT#2	Resp#1	Resp#2	ng/ml	ng/ml
45) L9	AR-1268-5	0.000	8.586	0	10726	N.D.	1.018 #

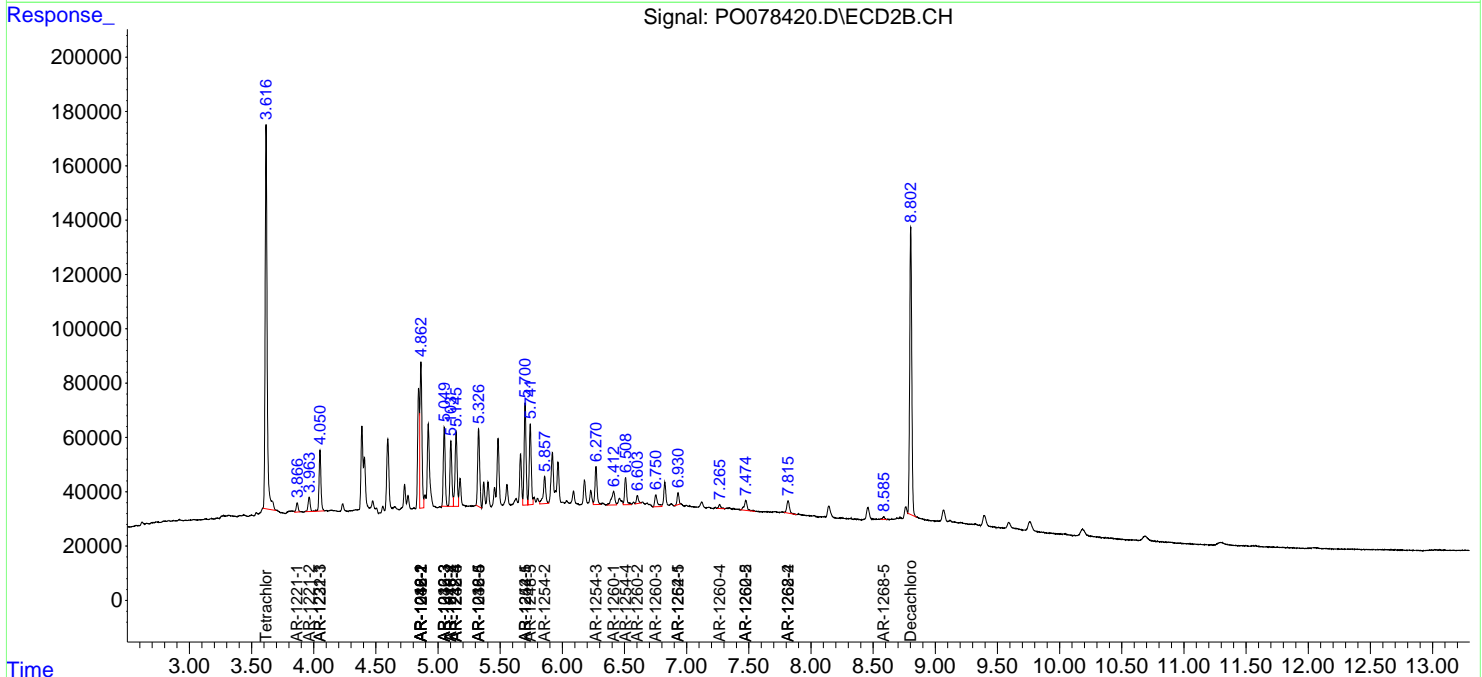
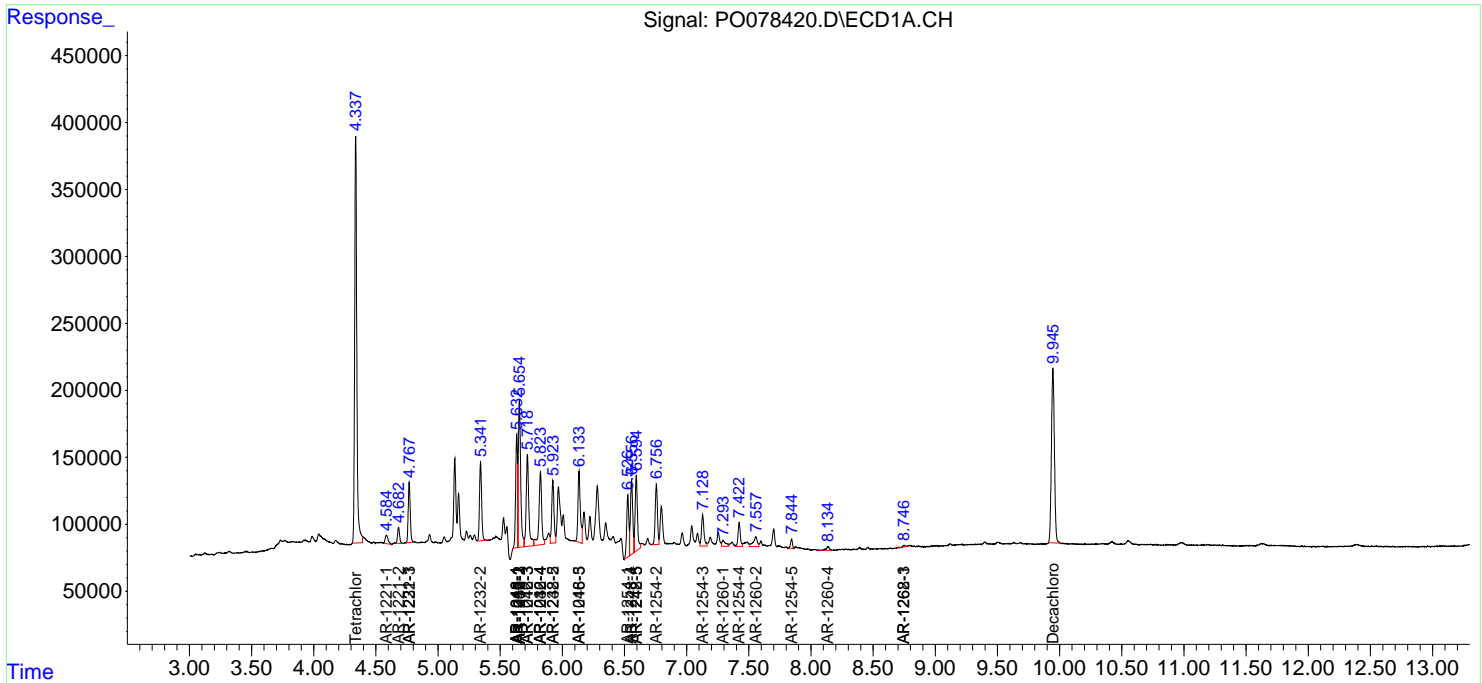
(f)=RT Delta > 1/2 Window (#)=Amounts differ by > 25% (m)=manual int.

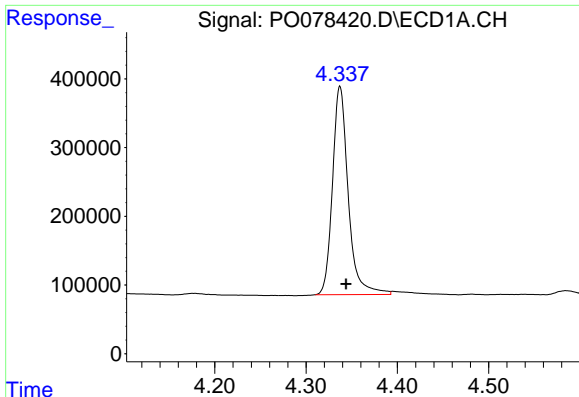
Data Path : Z:\pestpcbsrv\HPCHEM1\ECD_O\Data\P0060321\
 Data File : P0078420.D
 Signal(s) : Signal #1: ECD1A.CH Signal #2: ECD2B.CH
 Acq On : 03 Jun 2021 20:10
 Operator : DD\AJ
 Sample : AR1242CCC500
 Misc :
 ALS Vial : 4 Sample Multiplier: 1

Instrument :
 ECD_O
 Client Sampled :
 AR1242CCC500

Integration File signal 1: autoint1.e
 Integration File signal 2: autoint2.e
 Quant Time: Jun 04 04:53:43 2021
 Quant Method : Z:\pestpcbsrv\HPCHEM1\ECD_O\methods\P0051821.M
 Quant Title : GC EXTRACTABLES
 QLast Update : Wed May 19 06:28:32 2021
 Response via : Initial Calibration
 Integrator: ChemStation 6890 Scale Mode: Small noise peaks clipped

Volume Inj. : 2 µl
 Signal #1 Phase : ZB-MR1 Signal #2 Phase: ZB-MR2
 Signal #1 Info : 30Mx0.32mmx 0.50µ Signal #2 Info : 30M x 0.32mm x 0.25µm

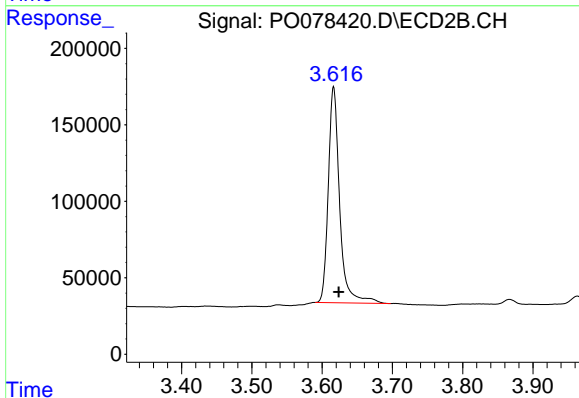




#1 Tetrachloro-m-xylene

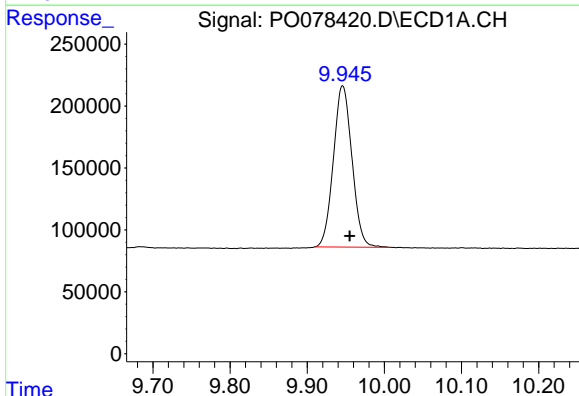
R.T.: 4.337 min
 Delta R.T.: -0.007 min
 Response: 3636143
 Conc: 49.20 ng/ml

Instrument :
 ECD_O
 ClientSampleId :
 AR1242CCC500



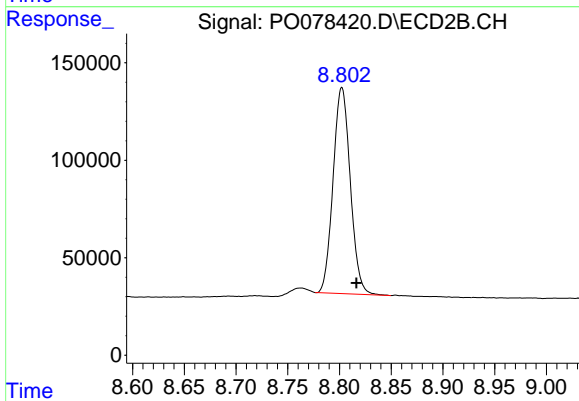
#1 Tetrachloro-m-xylene

R.T.: 3.616 min
 Delta R.T.: -0.007 min
 Response: 1590106
 Conc: 52.62 ng/ml



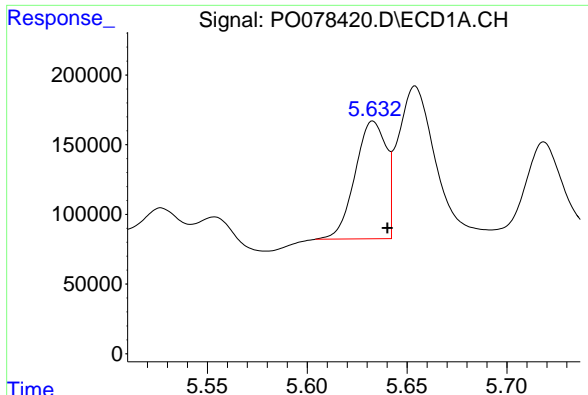
#2 Decachlorobiphenyl

R.T.: 9.946 min
 Delta R.T.: -0.009 min
 Response: 2176446
 Conc: 44.02 ng/ml



#2 Decachlorobiphenyl

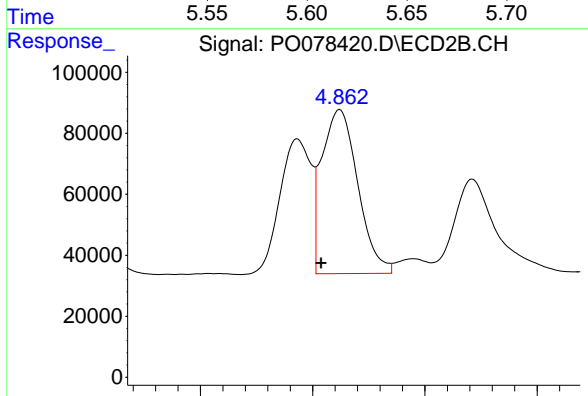
R.T.: 8.802 min
 Delta R.T.: -0.014 min
 Response: 1224200
 Conc: 42.10 ng/ml



#3 AR-1016-1

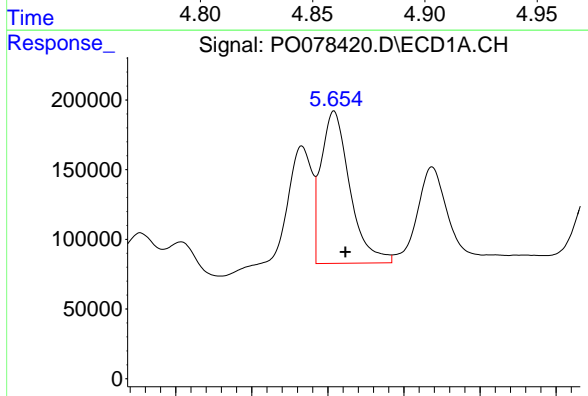
R.T.: 5.633 min
 Delta R.T.: -0.007 min
 Response: 914383
 Conc: 375.37 ng/ml

Instrument :
 ECD_O
 ClientSampleId :
 AR1242CCC500



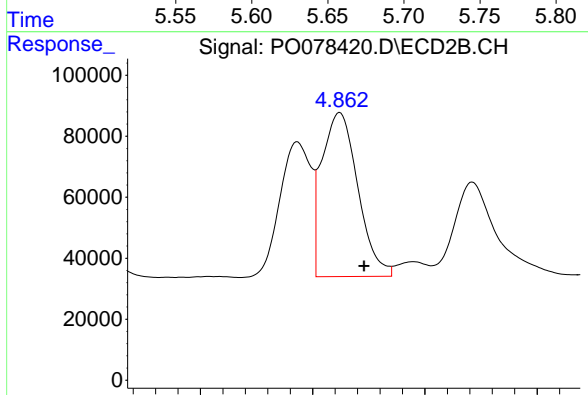
#3 AR-1016-1

R.T.: 4.862 min
 Delta R.T.: 0.008 min
 Response: 602234
 Conc: 551.58 ng/ml



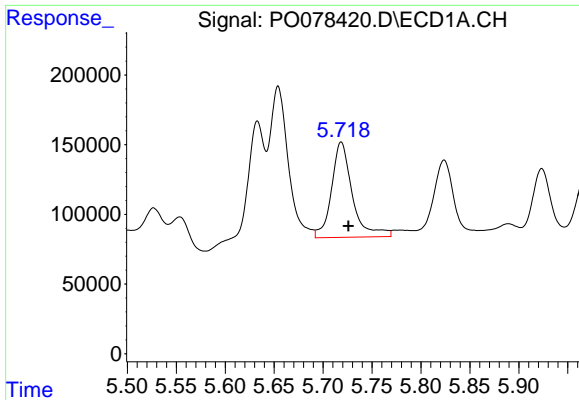
#4 AR-1016-2

R.T.: 5.654 min
 Delta R.T.: -0.008 min
 Response: 1442752
 Conc: 404.66 ng/ml



#4 AR-1016-2

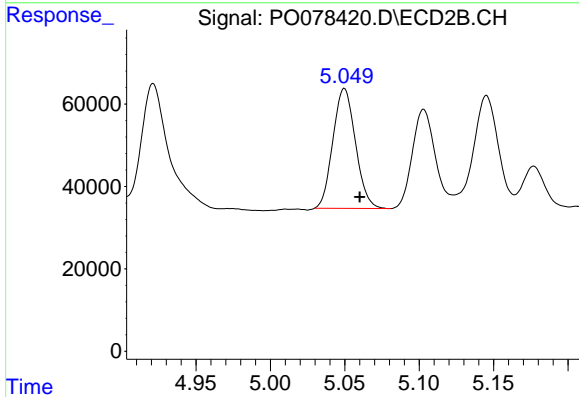
R.T.: 4.862 min
 Delta R.T.: -0.011 min
 Response: 602234
 Conc: 387.39 ng/ml



#5 AR-1016-3

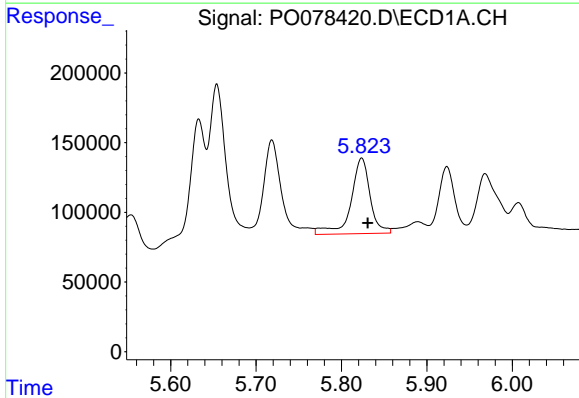
R.T.: 5.719 min
Delta R.T.: -0.007 min
Response: 1014066
Conc: 457.63 ng/ml

Instrument :
ECD_O
ClientSampleId :
AR1242CCC500



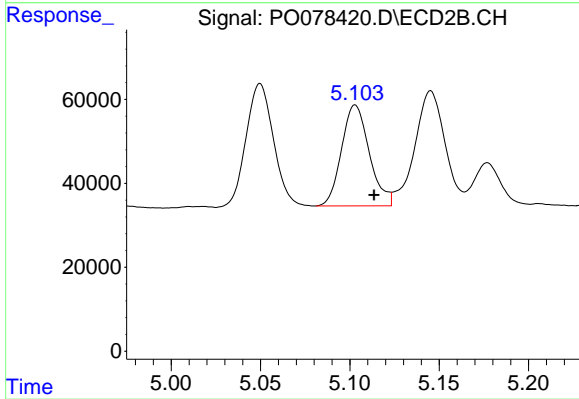
#5 AR-1016-3

R.T.: 5.050 min
Delta R.T.: -0.010 min
Response: 307178
Conc: 375.28 ng/ml



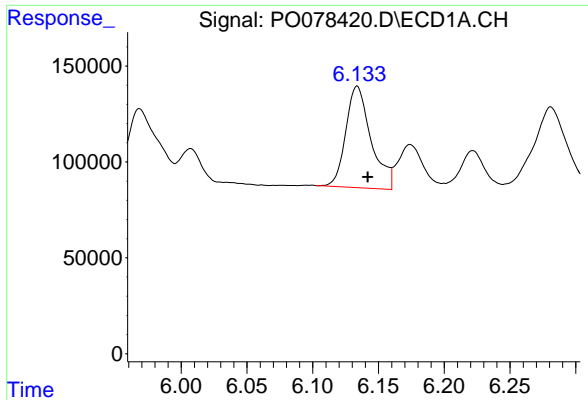
#6 AR-1016-4

R.T.: 5.824 min
Delta R.T.: -0.007 min
Response: 848399
Conc: 486.04 ng/ml



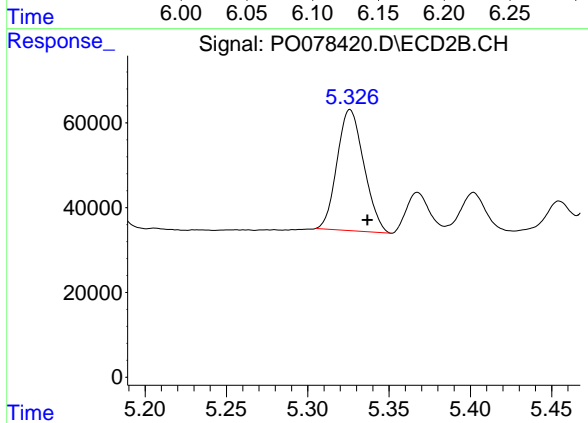
#6 AR-1016-4

R.T.: 5.103 min
Delta R.T.: -0.010 min
Response: 260293
Conc: 365.93 ng/ml

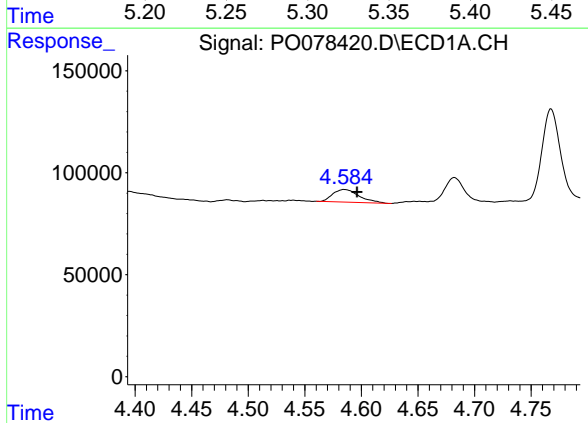


#7 AR-1016-5
 R.T.: 6.134 min
 Delta R.T.: -0.008 min
 Response: 708383
 Conc: 409.48 ng/ml

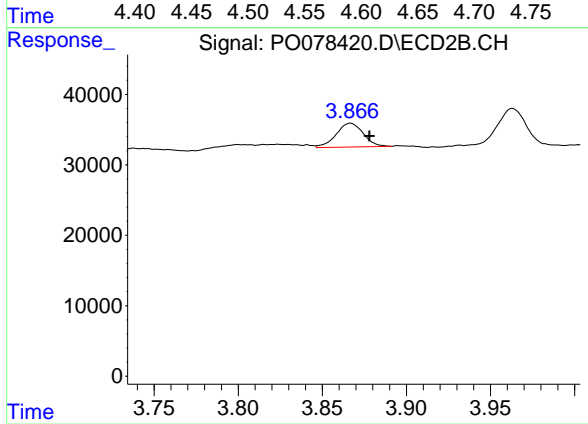
Instrument :
 ECD_O
 ClientSampleId :
 AR1242CCC500



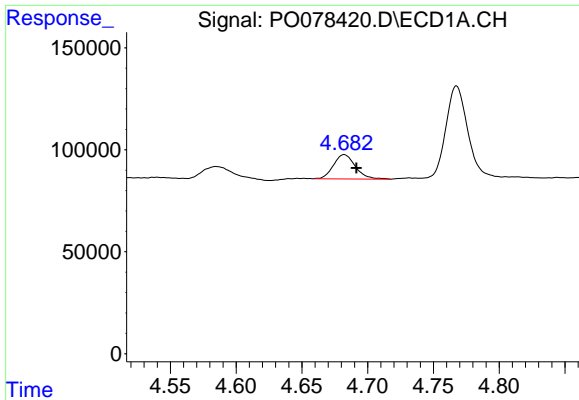
#7 AR-1016-5
 R.T.: 5.326 min
 Delta R.T.: -0.011 min
 Response: 327617
 Conc: 371.63 ng/ml



#8 AR-1221-1
 R.T.: 4.585 min
 Delta R.T.: -0.011 min
 Response: 100417
 Conc: 122.00 ng/ml

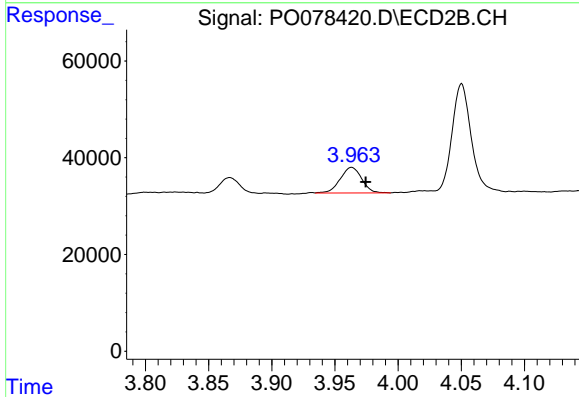


#8 AR-1221-1
 R.T.: 3.867 min
 Delta R.T.: -0.011 min
 Response: 37859
 Conc: 99.10 ng/ml

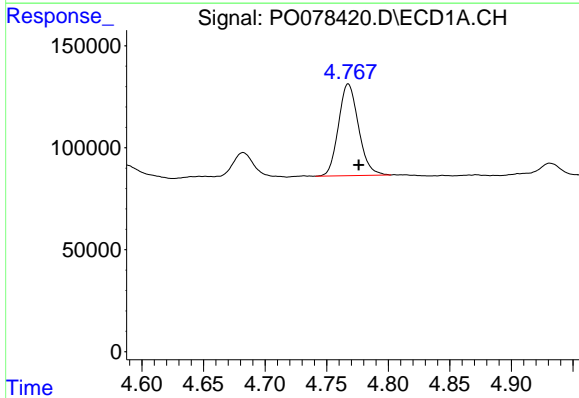


#9 AR-1221-2
 R.T.: 4.682 min
 Delta R.T.: -0.009 min
 Response: 138194
 Conc: 224.87 ng/ml

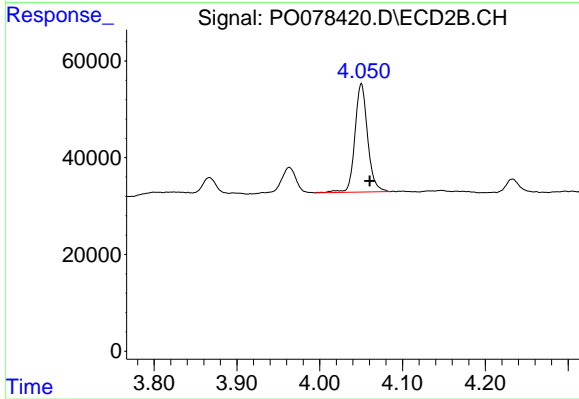
Instrument :
 ECD_O
 ClientSampleId :
 AR1242CCC500



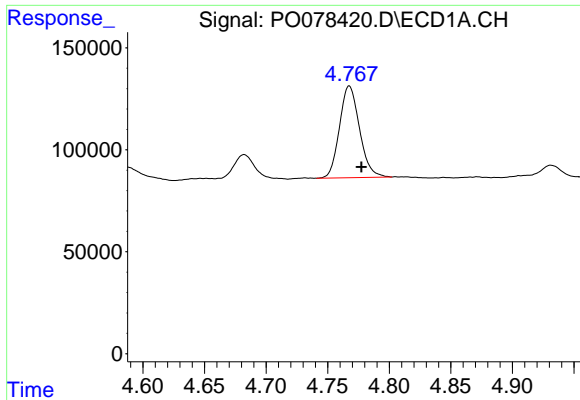
#9 AR-1221-2
 R.T.: 3.963 min
 Delta R.T.: -0.011 min
 Response: 62803
 Conc: 227.99 ng/ml



#10 AR-1221-3
 R.T.: 4.768 min
 Delta R.T.: -0.009 min
 Response: 509606
 Conc: 255.52 ng/ml



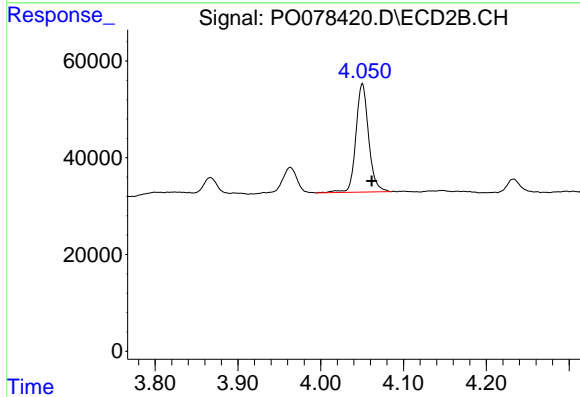
#10 AR-1221-3
 R.T.: 4.050 min
 Delta R.T.: -0.010 min
 Response: 239184
 Conc: 268.19 ng/ml



#11 AR-1232-1

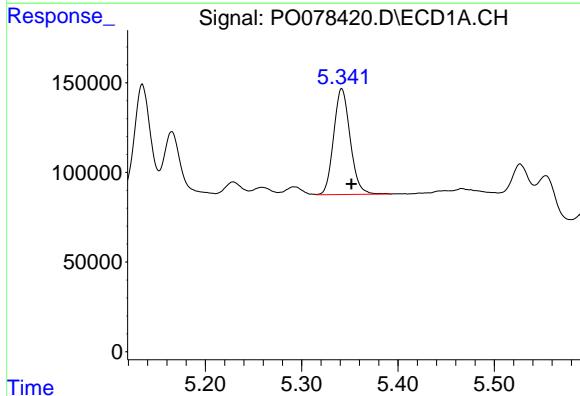
R.T.: 4.768 min
 Delta R.T.: -0.010 min
 Response: 509606
 Conc: 333.16 ng/ml

Instrument :
 ECD_O
 ClientSampleId :
 AR1242CCC500



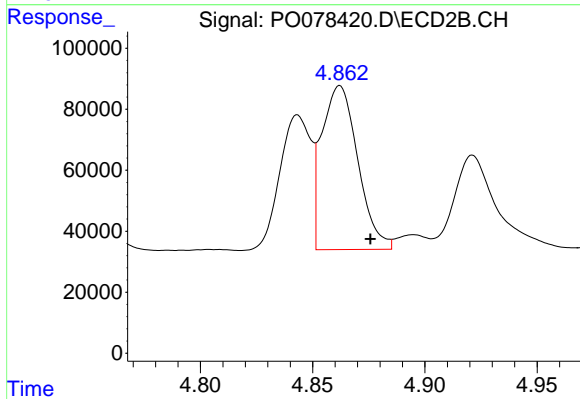
#11 AR-1232-1

R.T.: 4.050 min
 Delta R.T.: -0.011 min
 Response: 239184
 Conc: 344.08 ng/ml



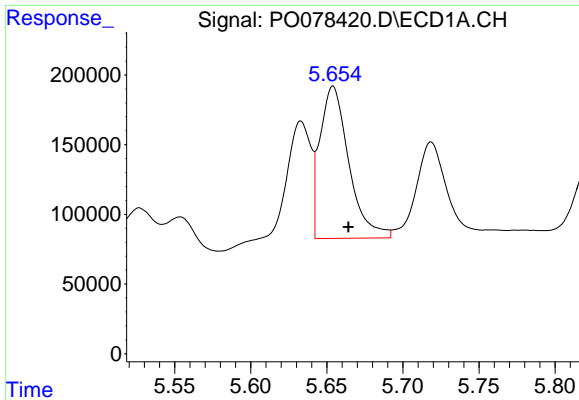
#12 AR-1232-2

R.T.: 5.342 min
 Delta R.T.: -0.010 min
 Response: 702890
 Conc: 891.67 ng/ml



#12 AR-1232-2

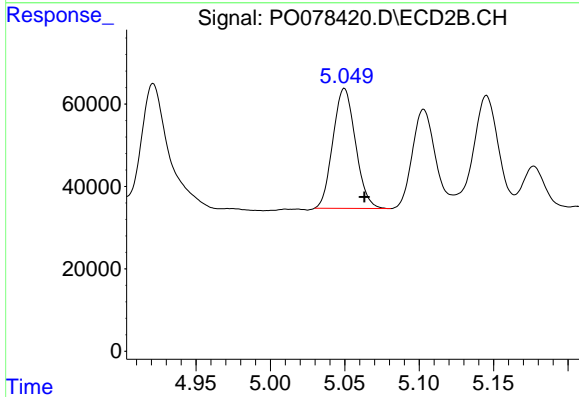
R.T.: 4.862 min
 Delta R.T.: -0.014 min
 Response: 602234
 Conc: 905.28 ng/ml



#13 AR-1232-3

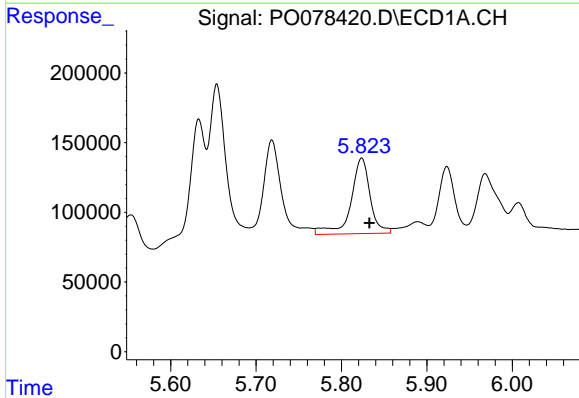
R.T.: 5.654 min
 Delta R.T.: -0.010 min
 Response: 1442752
 Conc: 993.65 ng/ml

Instrument :
 ECD_O
 ClientSampleId :
 AR1242CCC500



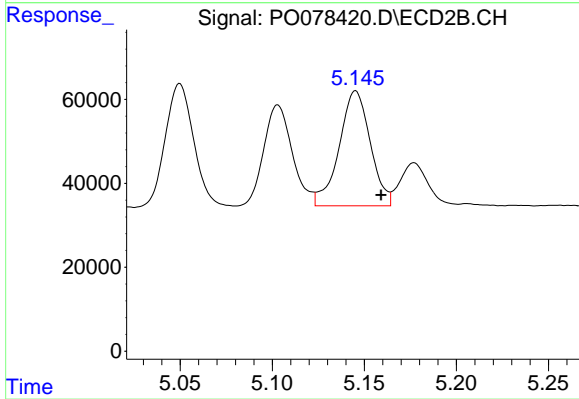
#13 AR-1232-3

R.T.: 5.050 min
 Delta R.T.: -0.014 min
 Response: 307178
 Conc: 903.92 ng/ml



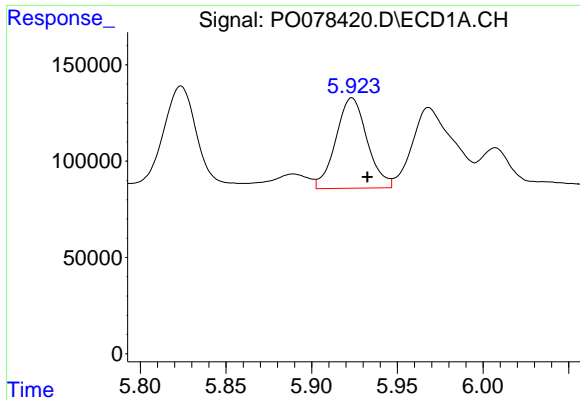
#14 AR-1232-4

R.T.: 5.824 min
 Delta R.T.: -0.009 min
 Response: 848399
 Conc: 1181.46 ng/ml



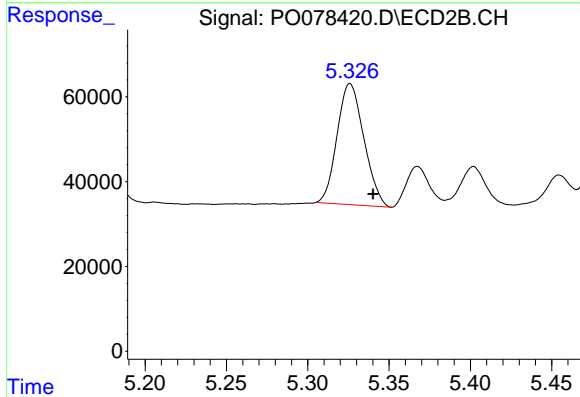
#14 AR-1232-4

R.T.: 5.145 min
 Delta R.T.: -0.014 min
 Response: 323250
 Conc: 1020.40 ng/ml

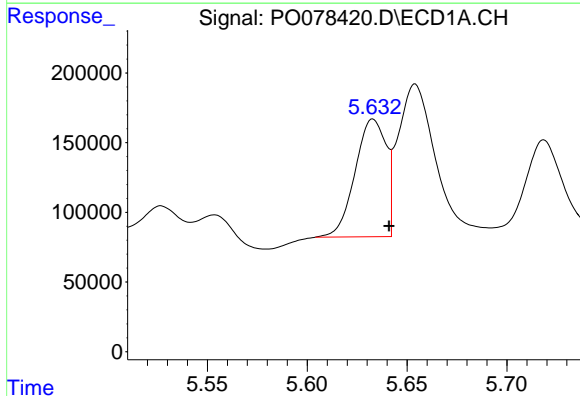


#15 AR-1232-5
 R.T.: 5.923 min
 Delta R.T.: -0.009 min
 Response: 597015
 Conc: 1215.93 ng/ml

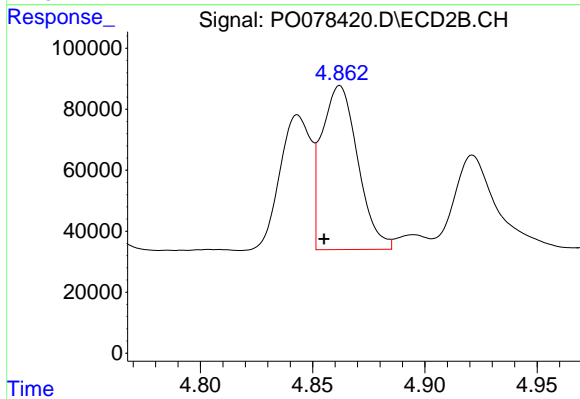
Instrument :
 ECD_O
 ClientSampleId :
 AR1242CCC500



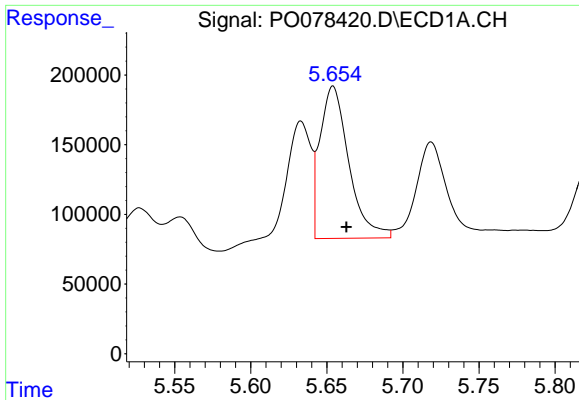
#15 AR-1232-5
 R.T.: 5.326 min
 Delta R.T.: -0.014 min
 Response: 327617
 Conc: 941.59 ng/ml



#16 AR-1242-1
 R.T.: 5.633 min
 Delta R.T.: -0.008 min
 Response: 914383
 Conc: 497.72 ng/ml



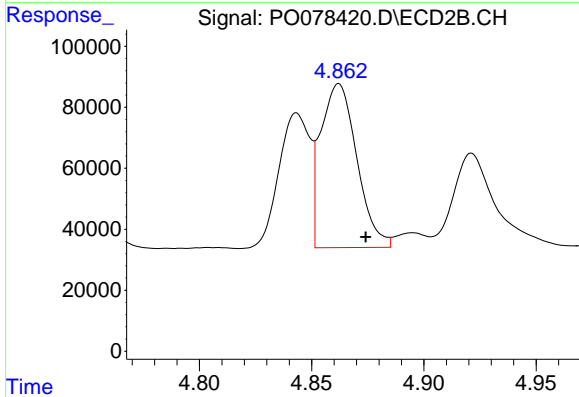
#16 AR-1242-1
 R.T.: 4.862 min
 Delta R.T.: 0.007 min
 Response: 602234
 Conc: 701.16 ng/ml



#17 AR-1242-2

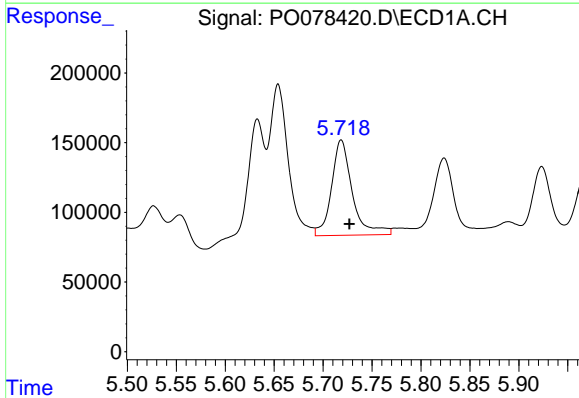
R.T.: 5.654 min
 Delta R.T.: -0.009 min
 Response: 1442752
 Conc: 534.08 ng/ml

Instrument :
 ECD_O
 ClientSampleId :
 AR1242CCC500



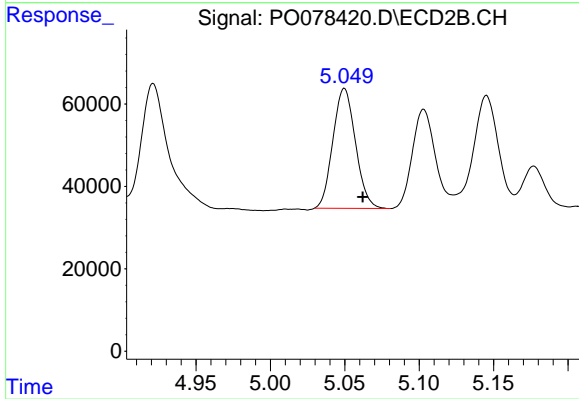
#17 AR-1242-2

R.T.: 4.862 min
 Delta R.T.: -0.012 min
 Response: 602234
 Conc: 497.74 ng/ml



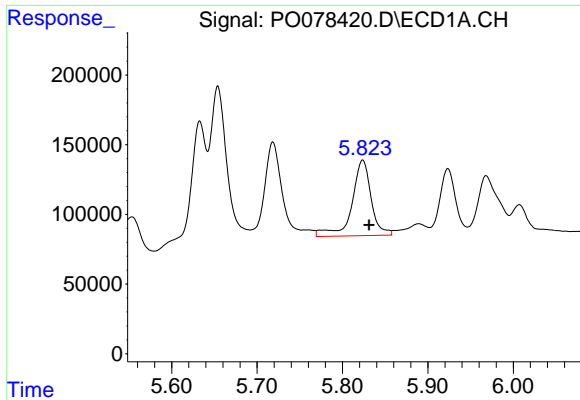
#18 AR-1242-3

R.T.: 5.719 min
 Delta R.T.: -0.008 min
 Response: 1014066
 Conc: 582.62 ng/ml



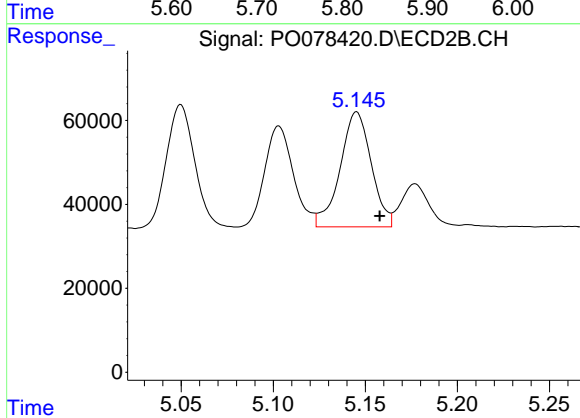
#18 AR-1242-3

R.T.: 5.050 min
 Delta R.T.: -0.012 min
 Response: 307178
 Conc: 476.79 ng/ml

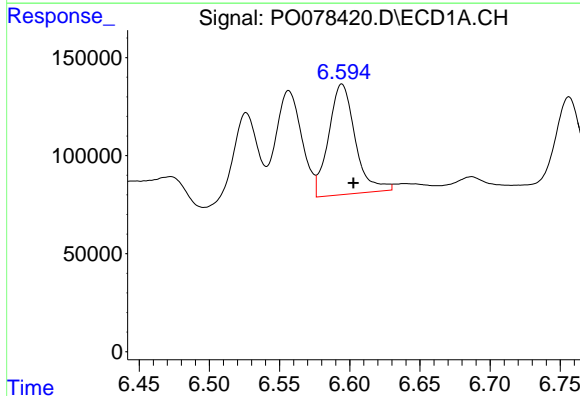


#19 AR-1242-4
 R.T.: 5.824 min
 Delta R.T.: -0.007 min
 Response: 848399
 Conc: 606.86 ng/ml

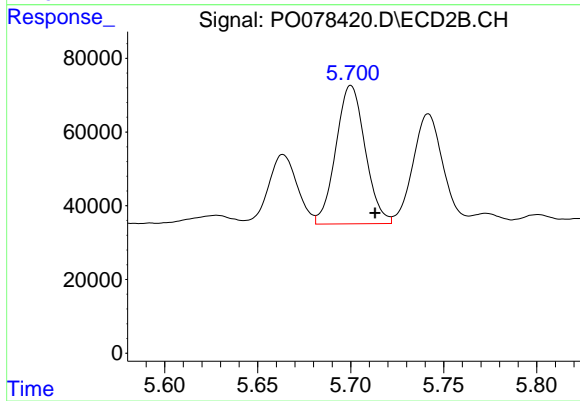
Instrument :
 ECD_O
 ClientSampleId :
 AR1242CCC500



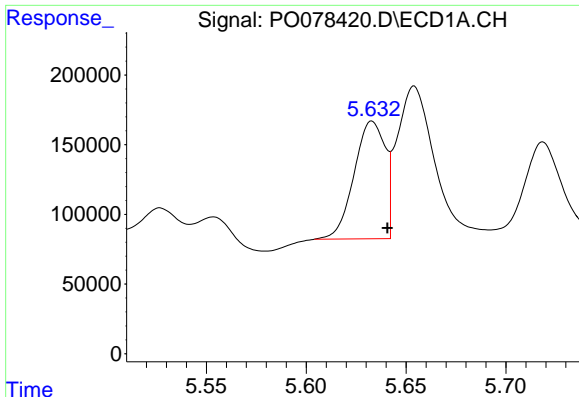
#19 AR-1242-4
 R.T.: 5.145 min
 Delta R.T.: -0.013 min
 Response: 323250
 Conc: 478.14 ng/ml



#20 AR-1242-5
 R.T.: 6.594 min
 Delta R.T.: -0.008 min
 Response: 744312
 Conc: 556.23 ng/ml



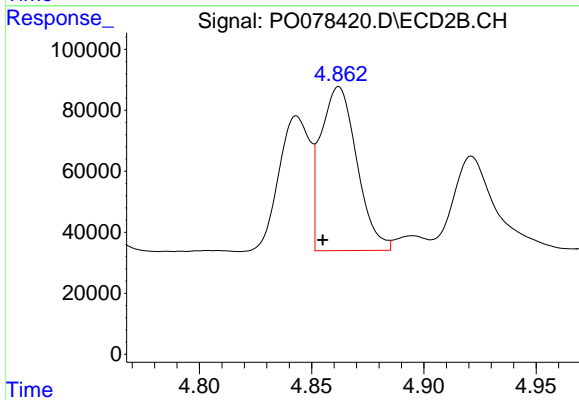
#20 AR-1242-5
 R.T.: 5.700 min
 Delta R.T.: -0.013 min
 Response: 411658
 Conc: 502.02 ng/ml



#21 AR-1248-1

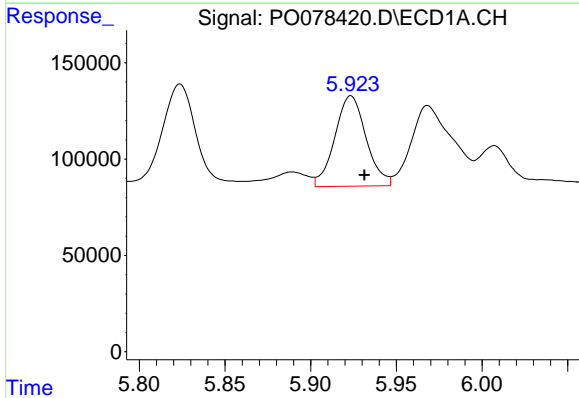
R.T.: 5.633 min
 Delta R.T.: -0.008 min
 Response: 914383
 Conc: 641.72 ng/ml

Instrument :
 ECD_O
 ClientSampleId :
 AR1242CCC500



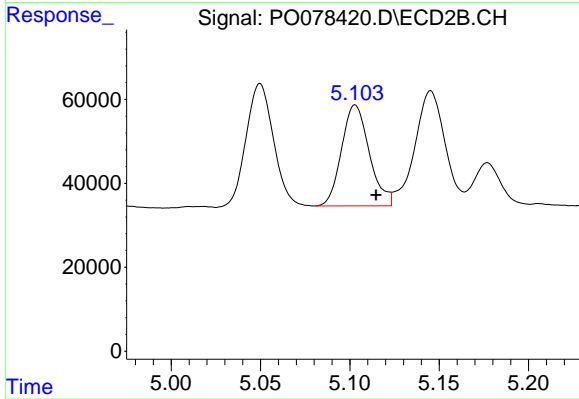
#21 AR-1248-1

R.T.: 4.862 min
 Delta R.T.: 0.007 min
 Response: 602234
 Conc: 934.50 ng/ml



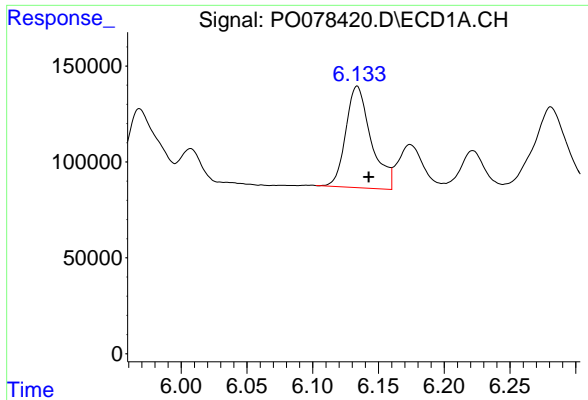
#22 AR-1248-2

R.T.: 5.923 min
 Delta R.T.: -0.008 min
 Response: 597015
 Conc: 314.47 ng/ml



#22 AR-1248-2

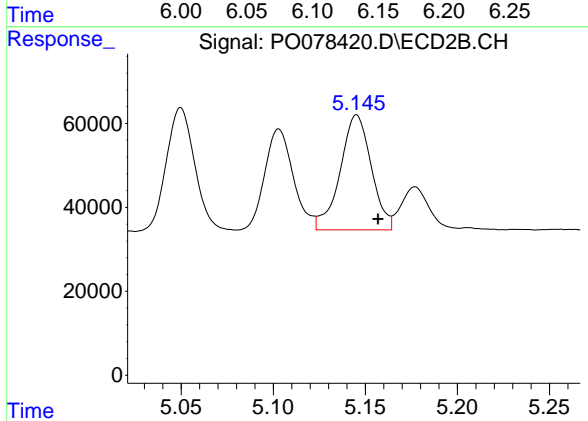
R.T.: 5.103 min
 Delta R.T.: -0.012 min
 Response: 260293
 Conc: 272.29 ng/ml



#23 AR-1248-3

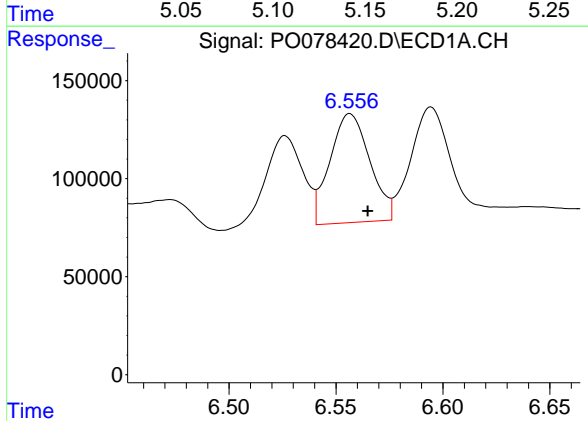
R.T.: 6.134 min
 Delta R.T.: -0.009 min
 Response: 708383
 Conc: 319.37 ng/ml

Instrument :
 ECD_O
 ClientSampleId :
 AR1242CCC500



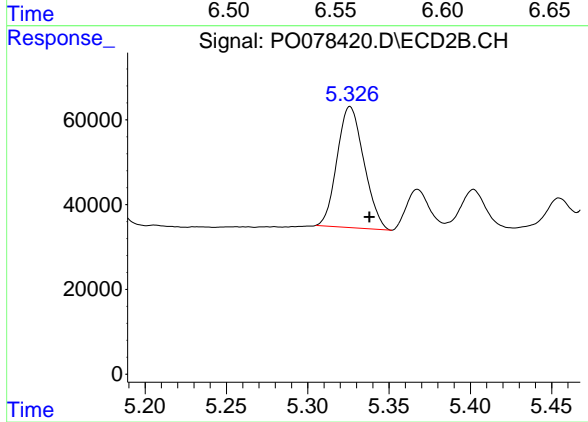
#23 AR-1248-3

R.T.: 5.145 min
 Delta R.T.: -0.012 min
 Response: 323250
 Conc: 336.29 ng/ml



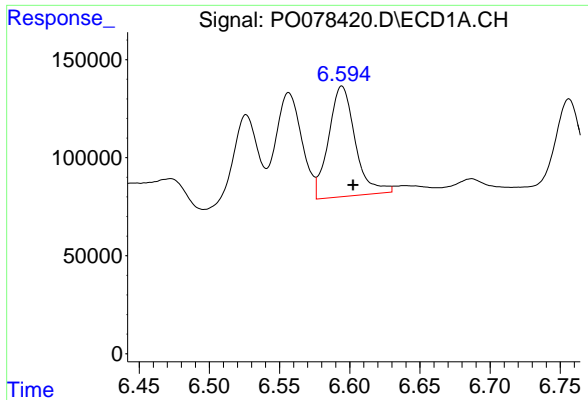
#24 AR-1248-4

R.T.: 6.557 min
 Delta R.T.: -0.008 min
 Response: 721117
 Conc: 309.81 ng/ml



#24 AR-1248-4

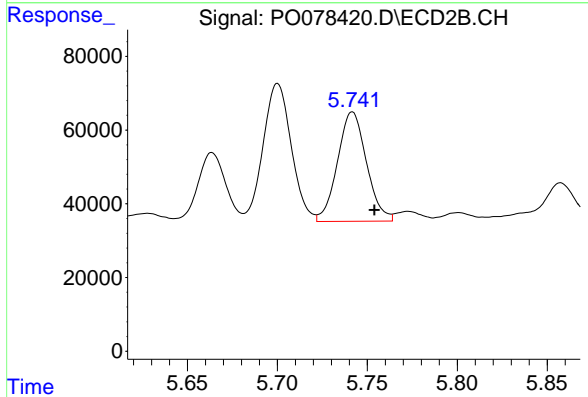
R.T.: 5.326 min
 Delta R.T.: -0.012 min
 Response: 327617
 Conc: 286.06 ng/ml



#25 AR-1248-5

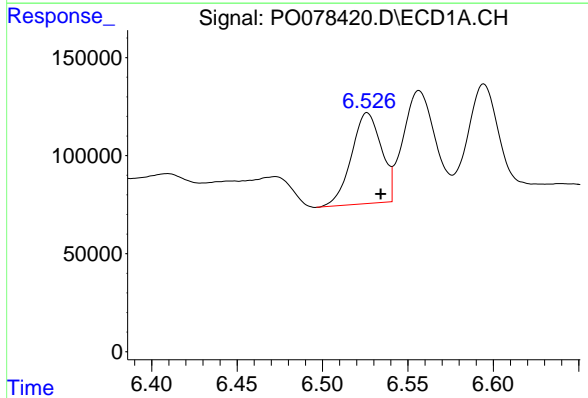
R.T.: 6.594 min
 Delta R.T.: -0.008 min
 Response: 744312
 Conc: 328.97 ng/ml

Instrument :
 ECD_O
ClientSampleId :
 AR1242CCC500



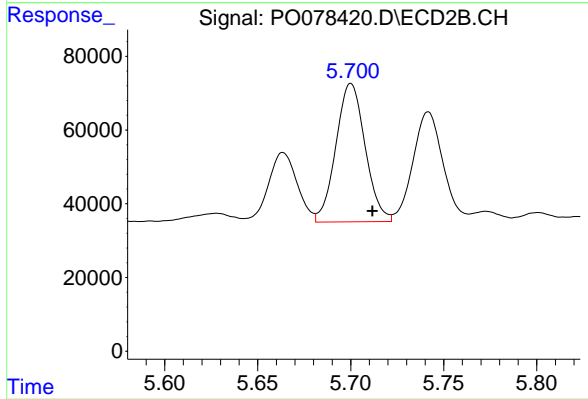
#25 AR-1248-5

R.T.: 5.742 min
 Delta R.T.: -0.012 min
 Response: 333707
 Conc: 318.47 ng/ml



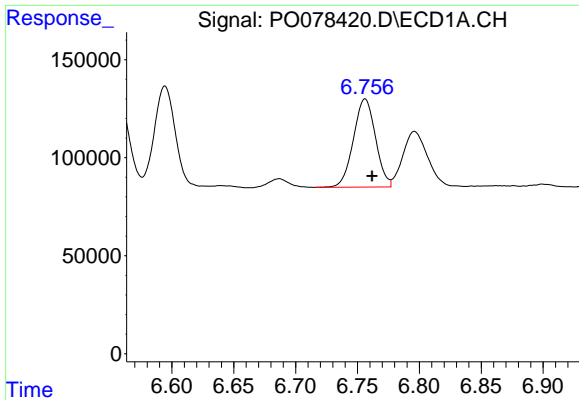
#26 AR-1254-1

R.T.: 6.526 min
 Delta R.T.: -0.008 min
 Response: 564012
 Conc: 227.24 ng/ml



#26 AR-1254-1

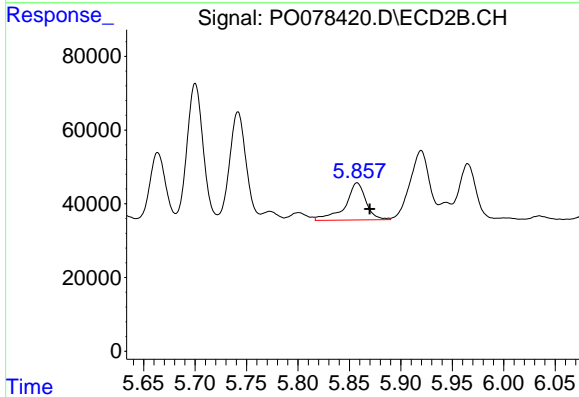
R.T.: 5.700 min
 Delta R.T.: -0.011 min
 Response: 411658
 Conc: 238.70 ng/ml



#27 AR-1254-2

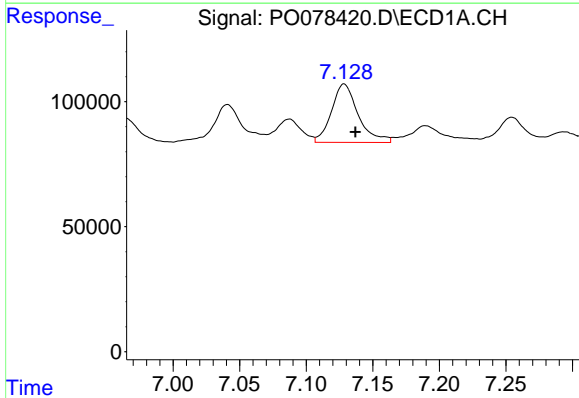
R.T.: 6.756 min
 Delta R.T.: -0.006 min
 Response: 559421
 Conc: 144.16 ng/ml

Instrument :
 ECD_O
 ClientSampleId :
 AR1242CCC500



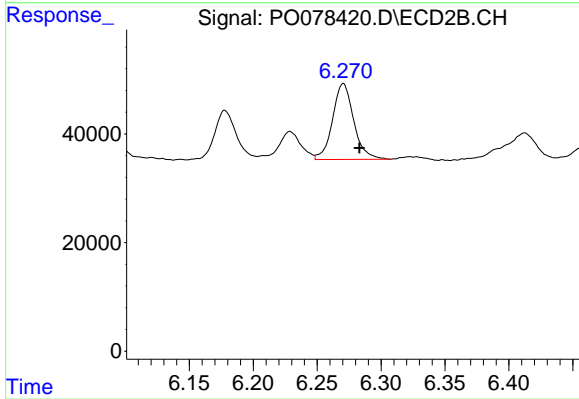
#27 AR-1254-2

R.T.: 5.857 min
 Delta R.T.: -0.012 min
 Response: 141130
 Conc: 88.04 ng/ml



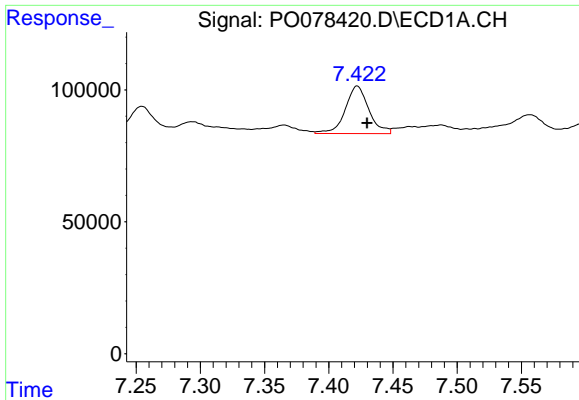
#28 AR-1254-3

R.T.: 7.128 min
 Delta R.T.: -0.008 min
 Response: 326530
 Conc: 83.23 ng/ml



#28 AR-1254-3

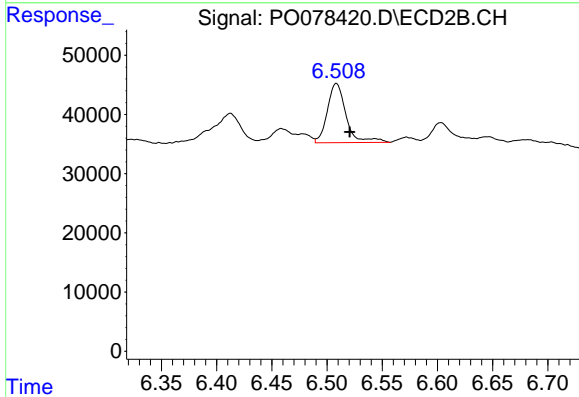
R.T.: 6.270 min
 Delta R.T.: -0.013 min
 Response: 160776
 Conc: 67.36 ng/ml



#29 AR-1254-4

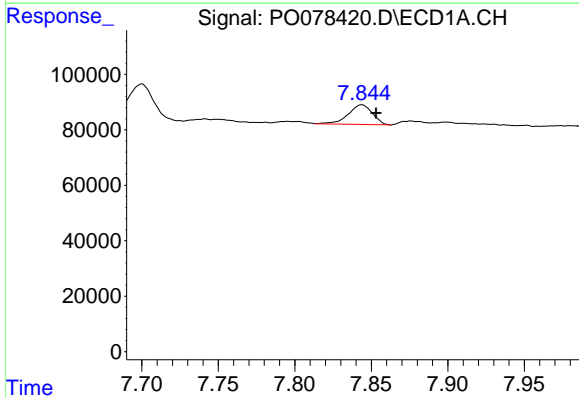
R.T.: 7.422 min
 Delta R.T.: -0.008 min
 Response: 230448
 Conc: 84.86 ng/ml

Instrument :
 ECD_O
 ClientSampleId :
 AR1242CCC500



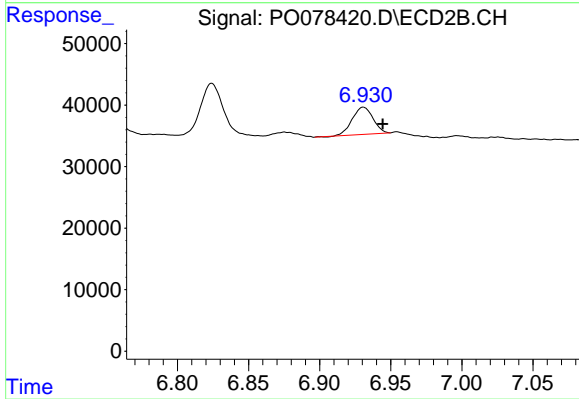
#29 AR-1254-4

R.T.: 6.508 min
 Delta R.T.: -0.012 min
 Response: 117898
 Conc: 81.21 ng/ml



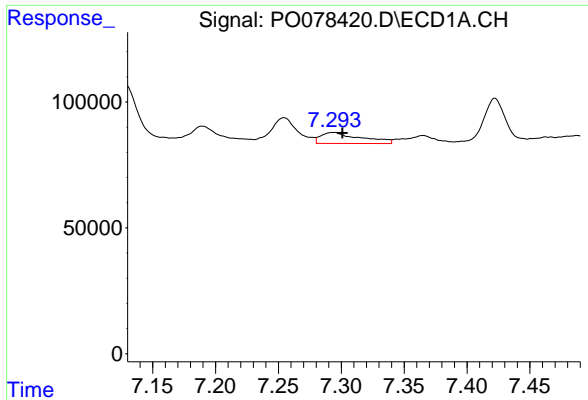
#30 AR-1254-5

R.T.: 7.844 min
 Delta R.T.: -0.009 min
 Response: 77753
 Conc: 26.59 ng/ml



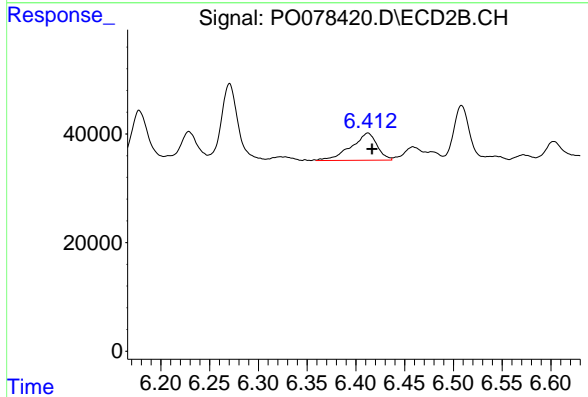
#30 AR-1254-5

R.T.: 6.931 min
 Delta R.T.: -0.014 min
 Response: 44907
 Conc: 19.76 ng/ml

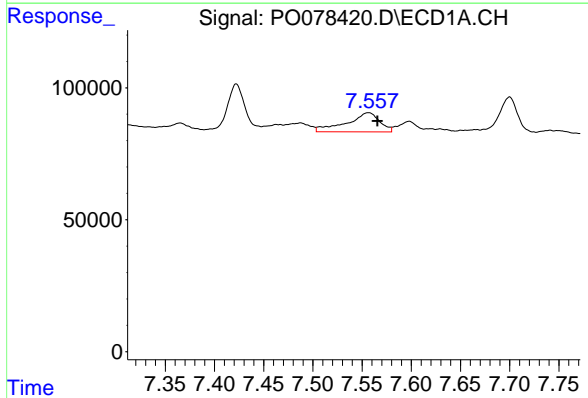


#31 AR-1260-1
 R.T.: 7.294 min
 Delta R.T.: -0.007 min
 Response: 95938
 Conc: 34.19 ng/ml

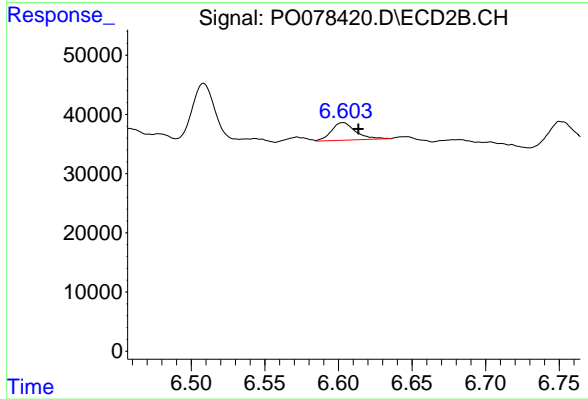
Instrument :
 ECD_O
 ClientSampleId :
 AR1242CCC500



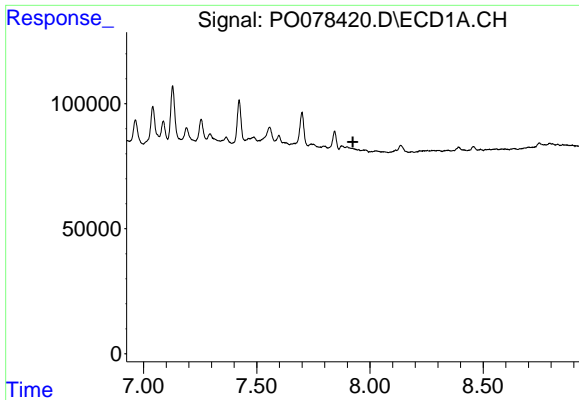
#31 AR-1260-1
 R.T.: 6.412 min
 Delta R.T.: -0.004 min
 Response: 92962
 Conc: 58.02 ng/ml



#32 AR-1260-2
 R.T.: 7.557 min
 Delta R.T.: -0.009 min
 Response: 169463
 Conc: 50.37 ng/ml



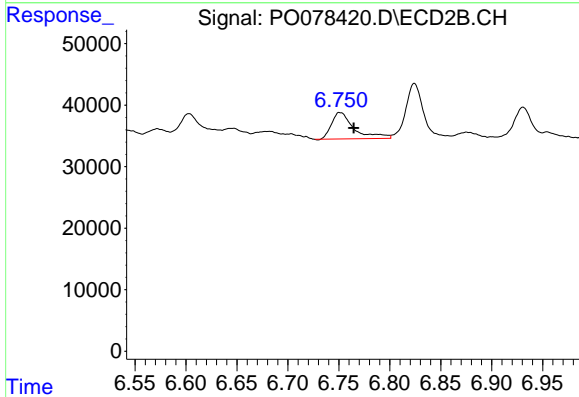
#32 AR-1260-2
 R.T.: 6.603 min
 Delta R.T.: -0.010 min
 Response: 33951
 Conc: 17.59 ng/ml



#33 AR-1260-3

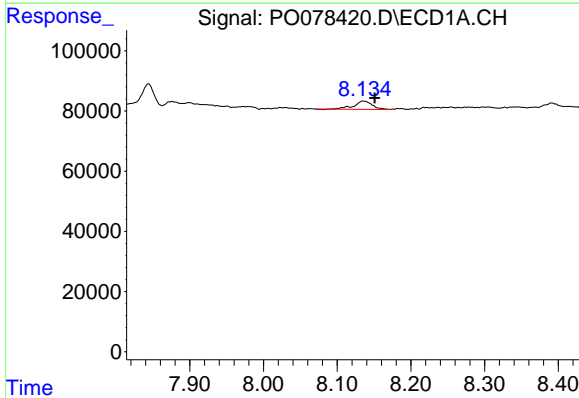
R.T.: 0.000 min
 Exp R.T.: 7.924 min
 Response: 0
 Conc: N.D.

Instrument :
 ECD_O
 ClientSampleId :
 AR1242CCC500



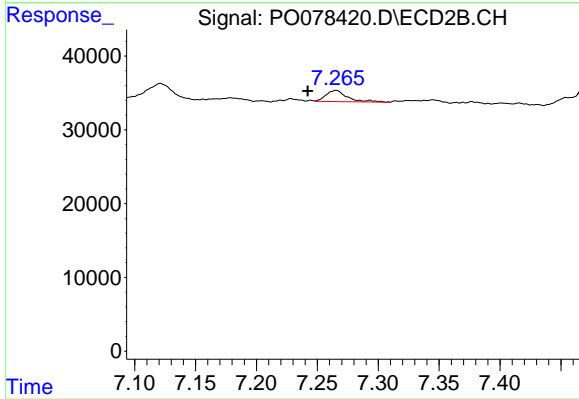
#33 AR-1260-3

R.T.: 6.751 min
 Delta R.T.: -0.014 min
 Response: 66385
 Conc: 36.18 ng/ml



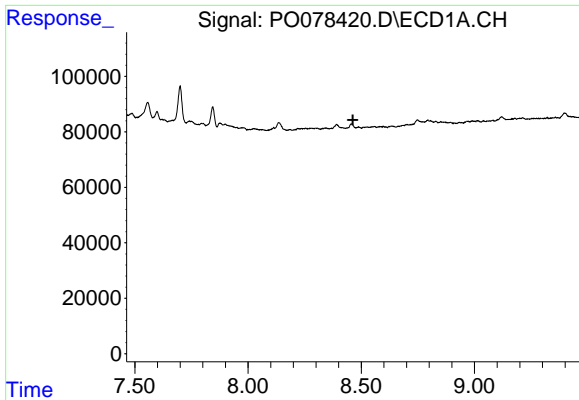
#34 AR-1260-4

R.T.: 8.135 min
 Delta R.T.: -0.016 min
 Response: 47446
 Conc: 17.71 ng/ml



#34 AR-1260-4

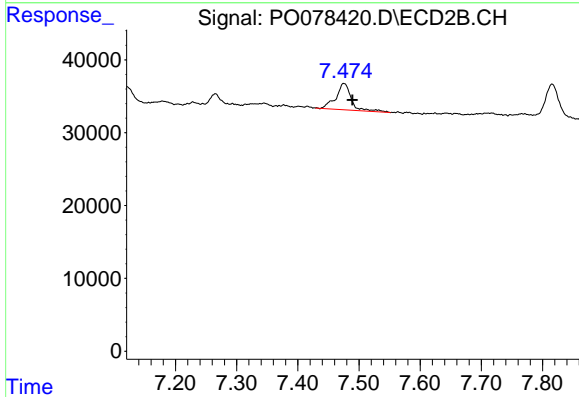
R.T.: 7.265 min
 Delta R.T.: 0.023 min
 Response: 18504
 Conc: 12.28 ng/ml



#35 AR-1260-5

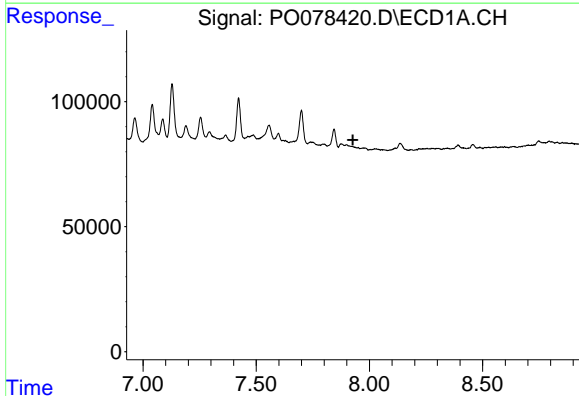
R.T.: 0.000 min
 Exp R.T. : 8.463 min
 Response: 0
 Conc: N.D.

Instrument :
 ECD_O
 ClientSampleId :
 AR1242CCC500



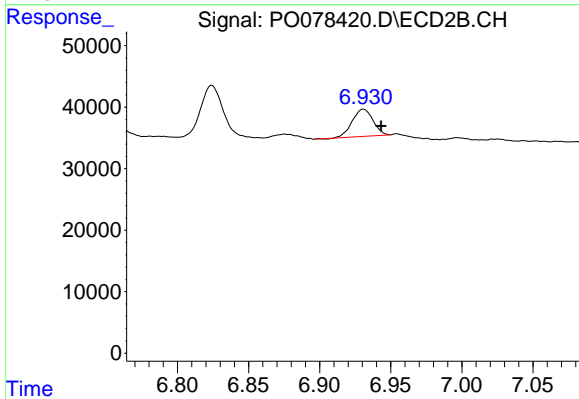
#35 AR-1260-5

R.T.: 7.475 min
 Delta R.T.: -0.014 min
 Response: 64475
 Conc: 18.49 ng/ml



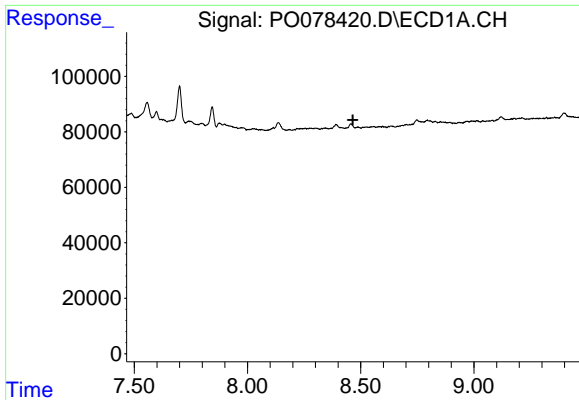
#36 AR-1262-1

R.T.: 0.000 min
 Exp R.T. : 7.927 min
 Response: 0
 Conc: N.D.



#36 AR-1262-1

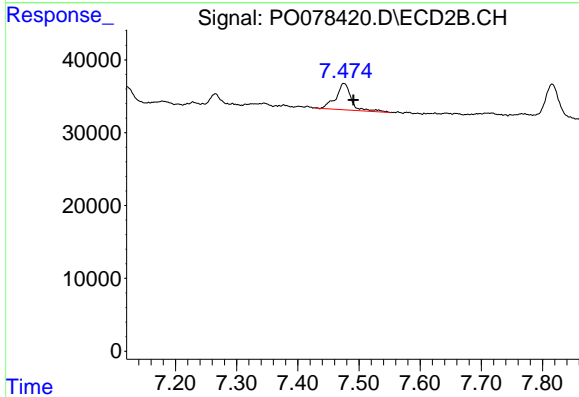
R.T.: 6.931 min
 Delta R.T.: -0.013 min
 Response: 44907
 Conc: 38.27 ng/ml



#37 AR-1262-2

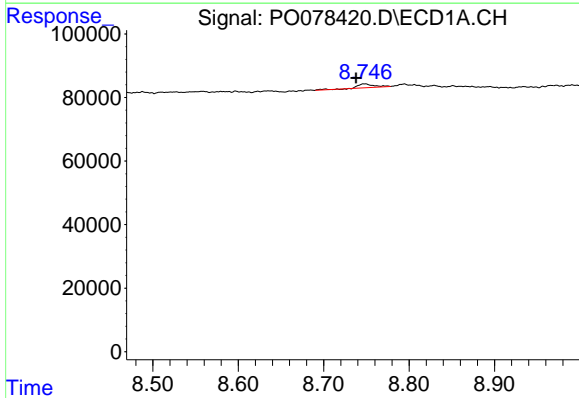
R.T.: 0.000 min
 Exp R.T. : 8.466 min
 Response: 0
 Conc: N.D.

Instrument :
 ECD_O
 ClientSampleId :
 AR1242CCC500



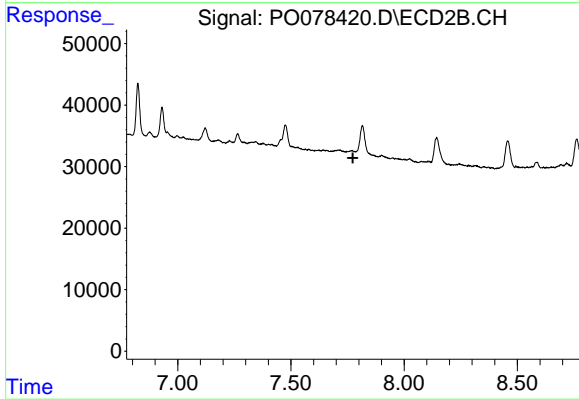
#37 AR-1262-2

R.T.: 7.475 min
 Delta R.T.: -0.016 min
 Response: 64475
 Conc: 16.53 ng/ml



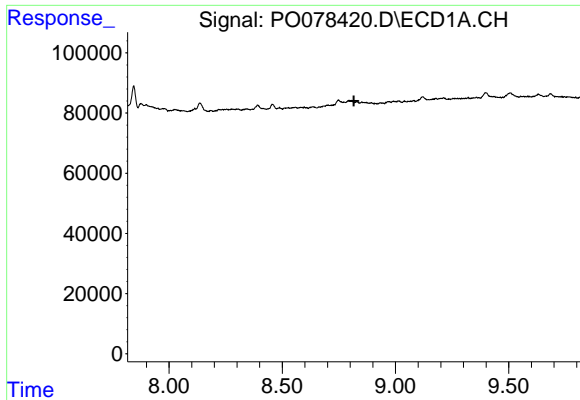
#38 AR-1262-3

R.T.: 8.748 min
 Delta R.T.: 0.010 min
 Response: 16774
 Conc: 4.15 ng/ml



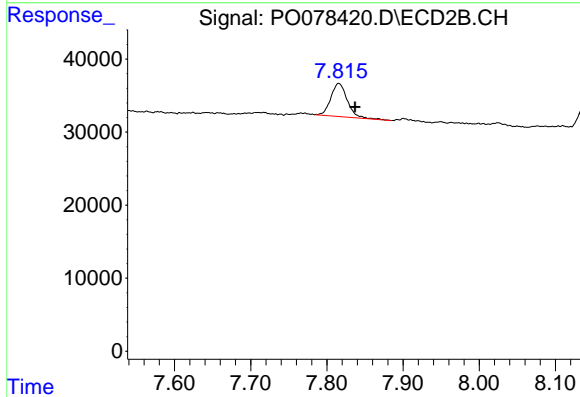
#38 AR-1262-3

R.T.: 0.000 min
 Exp R.T. : 7.774 min
 Response: 0
 Conc: N.D.

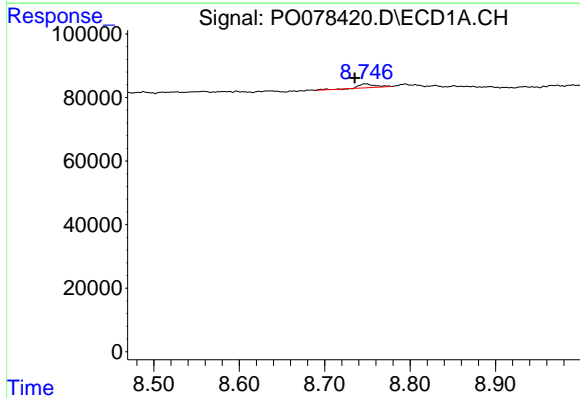


#39 AR-1262-4
 R.T.: 0.000 min
 Exp R.T.: 8.816 min
 Response: 0
 Conc: N.D.

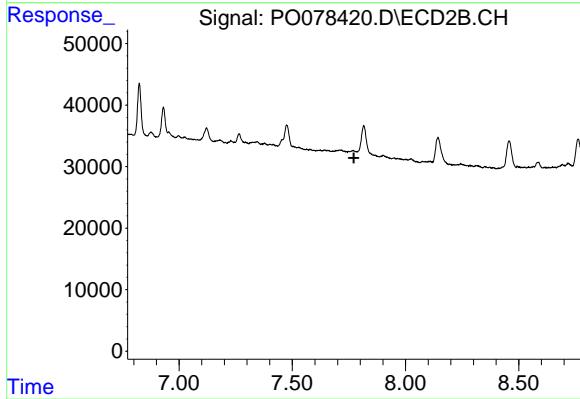
Instrument :
 ECD_O
 ClientSampleId :
 AR1242CCC500



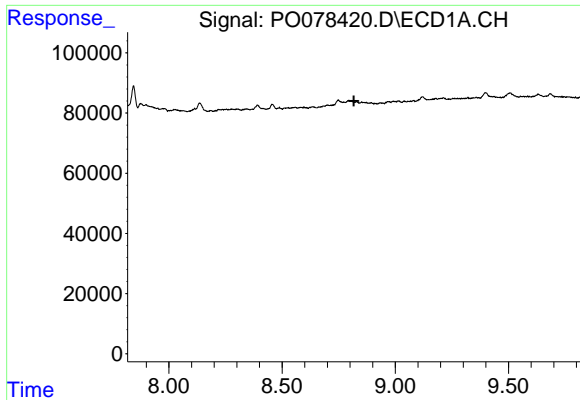
#39 AR-1262-4
 R.T.: 7.816 min
 Delta R.T.: -0.021 min
 Response: 68567
 Conc: 22.86 ng/ml



#41 AR-1268-1
 R.T.: 8.748 min
 Delta R.T.: 0.013 min
 Response: 16774
 Conc: 2.37 ng/ml

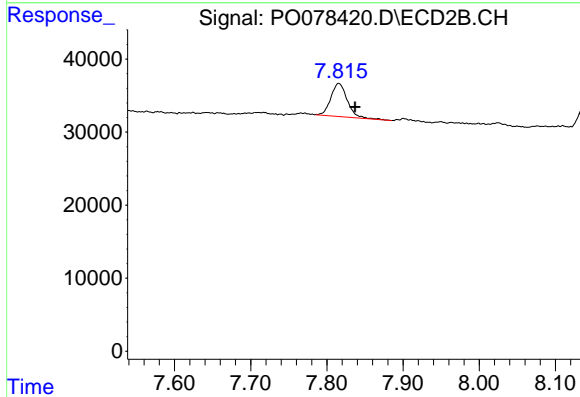


#41 AR-1268-1
 R.T.: 0.000 min
 Exp R.T.: 7.772 min
 Response: 0
 Conc: N.D.

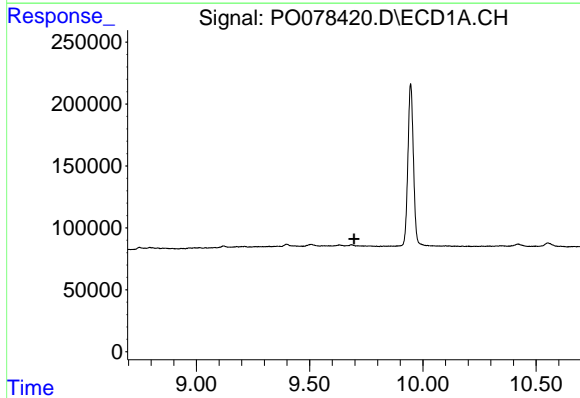


#42 AR-1268-2
 R.T.: 0.000 min
 Exp R.T.: 8.817 min
 Response: 0
 Conc: N.D.

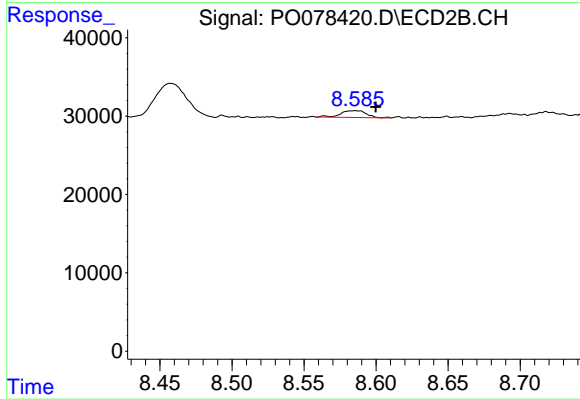
Instrument :
 ECD_O
 ClientSampleId :
 AR1242CCC500



#42 AR-1268-2
 R.T.: 7.816 min
 Delta R.T.: -0.021 min
 Response: 68567
 Conc: 16.57 ng/ml



#45 AR-1268-5
 R.T.: 0.000 min
 Exp R.T.: 9.696 min
 Response: 0
 Conc: N.D.



#45 AR-1268-5
 R.T.: 8.586 min
 Delta R.T.: -0.014 min
 Response: 10726
 Conc: 1.02 ng/ml