

Data Path : Z:\pestpcbsrv\HPCHEM1\ECD_0\Data\P0060321\
 Data File : P0078394.D
 Signal(s) : Signal #1: ECD1A.CH Signal #2: ECD2B.CH
 Acq On : 03 Jun 2021 10:37
 Operator : DD\AJ
 Sample : M2580-03
 Misc :
 ALS Vial : 9 Sample Multiplier: 1

Instrument :
 ECD_0
Client Sampled :
 18-B1(4-6)

Manual Integrations
APPROVED
 Ankita
 6/4/2021 2:13:18 PM

Integration File signal 1: autoint1.e
 Integration File signal 2: autoint2.e
 Quant Time: Jun 04 04:47:05 2021
 Quant Method : Z:\pestpcbsrv\HPCHEM1\ECD_0\methods\P0051821.M
 Quant Title : GC EXTRACTABLES
 QLast Update : Wed May 19 06:28:32 2021
 Response via : Initial Calibration
 Integrator: ChemStation 6890 Scale Mode: Small noise peaks clipped

Volume Inj. : 2 µl
 Signal #1 Phase : ZB-MR1 Signal #2 Phase: ZB-MR2
 Signal #1 Info : 30Mx0.32mmx 0.50µ Signal #2 Info : 30M x 0.32mm x 0.25µm

Compound	RT#1	RT#2	Resp#1	Resp#2	ng/ml	ng/ml

System Monitoring Compounds						
1) SA Tetrachlo...	4.339	3.627	4020949	1899432	54.405m	62.861
2) SA Decachlor...	9.946	8.802	1185687	667238	23.982	22.947
Target Compounds						
16) L4 AR-1242-1	5.633	4.843	12706514	6081247	6916.510	7080.191m
17) L4 AR-1242-2	5.655	4.862	20182368	9066075	7471.150	7493.050
18) L4 AR-1242-3	5.719	5.049	11540000	4505185	6630.194	6992.789m
19) L4 AR-1242-4	5.824	5.145	10146151	4086001	7257.540	6043.913
20) L4 AR-1242-5	6.595	5.700	9853918	9647767	7363.949	11765.472 #
26) L6 AR-1254-1	6.526	5.700	12951780	9647767	5218.299	5594.216
27) L6 AR-1254-2	6.755	5.858	21415014	5925200	5518.567	3696.388 #
28) L6 AR-1254-3	7.129	6.270	19241958	10703567	4904.479	4484.585
29) L6 AR-1254-4	7.422	6.509	11479511	5557603	4227.097	3827.920
30) L6 AR-1254-5	7.839	6.930	30217352	7043339	10332.553	3098.785m#

(f)=RT Delta > 1/2 Window (#)=Amounts differ by > 25% (m)=manual int.

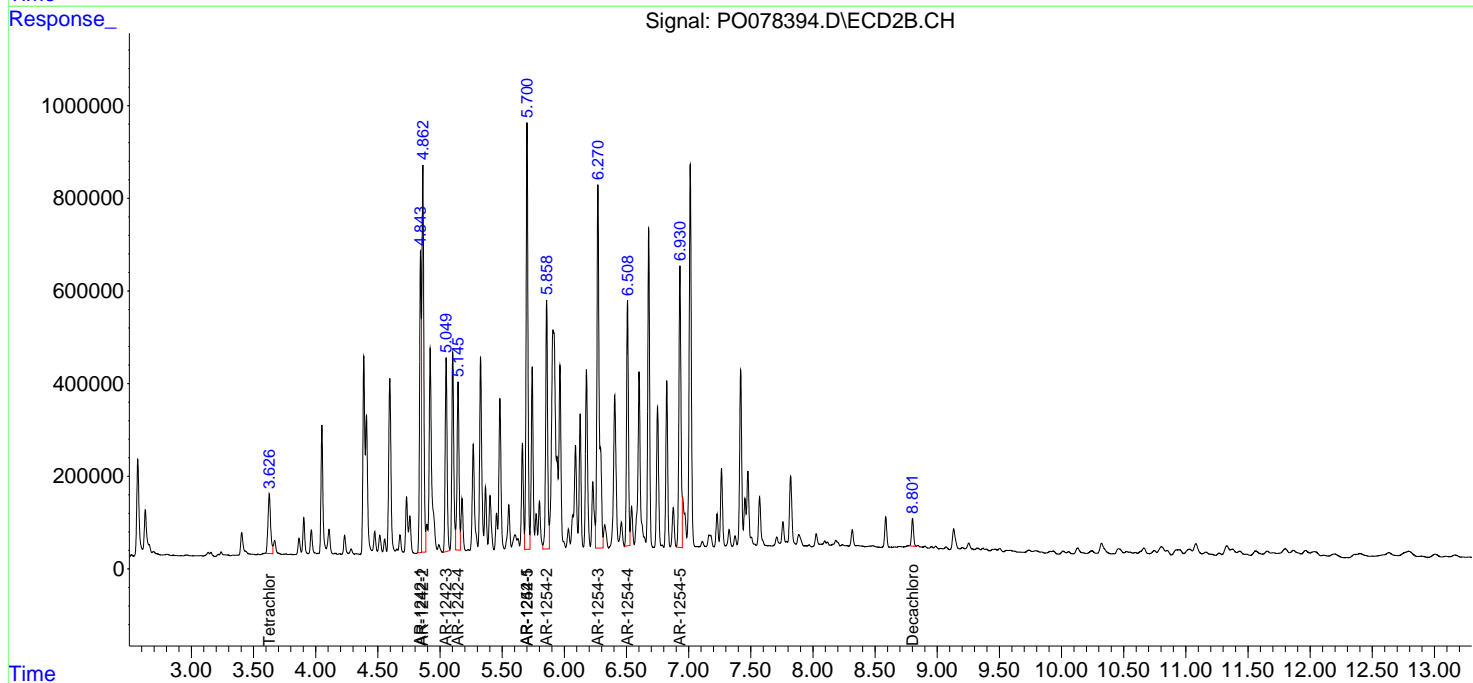
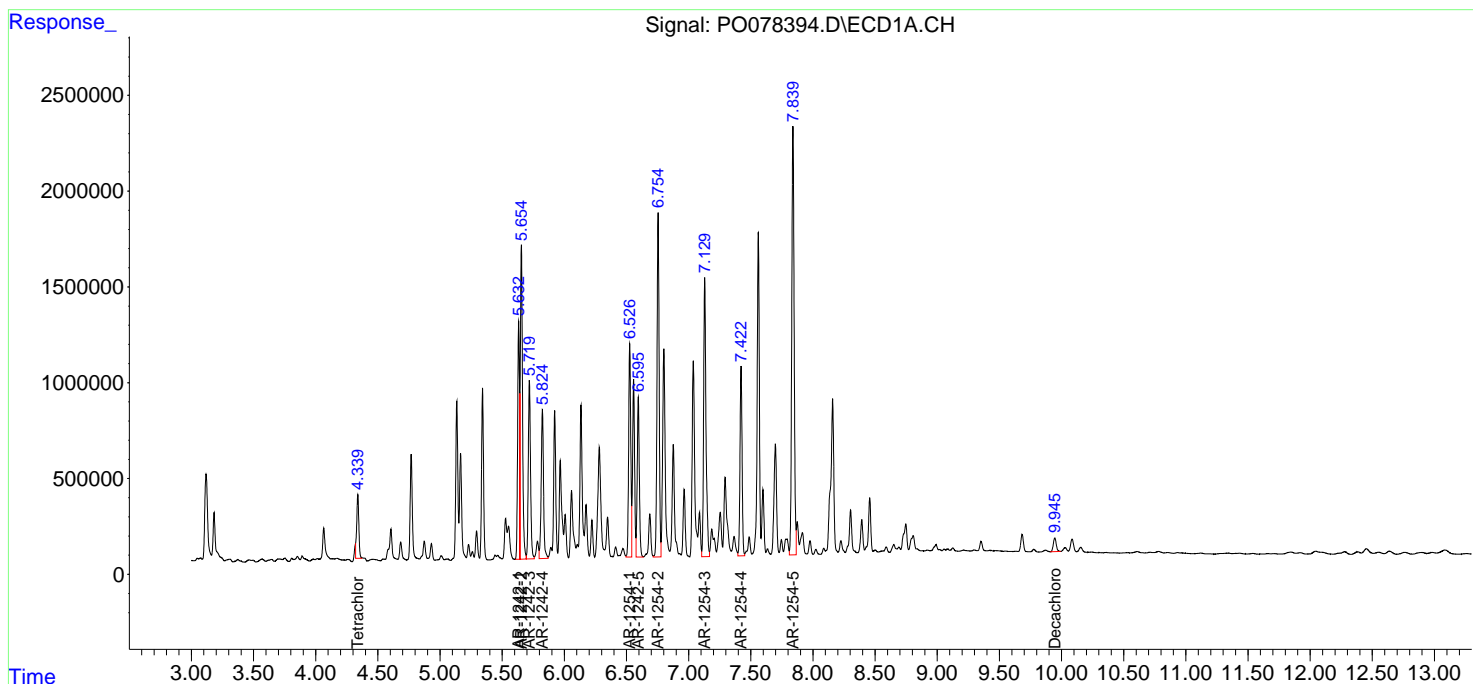
Data Path : Z:\pestpcbsrv\HPCHEM1\ECD_0\Data\P0060321\
 Data File : P0078394.D
 Signal(s) : Signal #1: ECD1A.CH Signal #2: ECD2B.CH
 Acq On : 03 Jun 2021 10:37
 Operator : DD\AJ
 Sample : M2580-03
 Misc :
 ALS Vial : 9 Sample Multiplier: 1

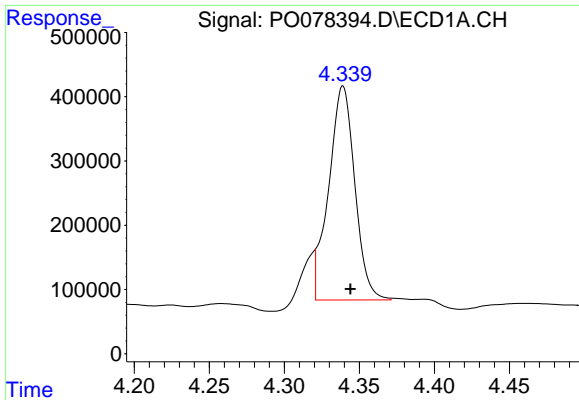
Instrument :
 ECD_O
 ClientSampled :
 18-B1(4-6)

Manual Integrations
APPROVED
 Ankita
 6/4/2021 2:13:18 PM

Integration File signal 1: autoint1.e
 Integration File signal 2: autoint2.e
 Quant Time: Jun 04 04:47:05 2021
 Quant Method : Z:\pestpcbsrv\HPCHEM1\ECD_0\methods\P0051821.M
 Quant Title : GC EXTRACTABLES
 QLast Update : Wed May 19 06:28:32 2021
 Response via : Initial Calibration
 Integrator: ChemStation 6890 Scale Mode: Small noise peaks clipped

Volume Inj. : 2 µl
 Signal #1 Phase : ZB-MR1 Signal #2 Phase: ZB-MR2
 Signal #1 Info : 30Mx0.32mmx 0.50µ Signal #2 Info : 30M x 0.32mm x 0.25µm

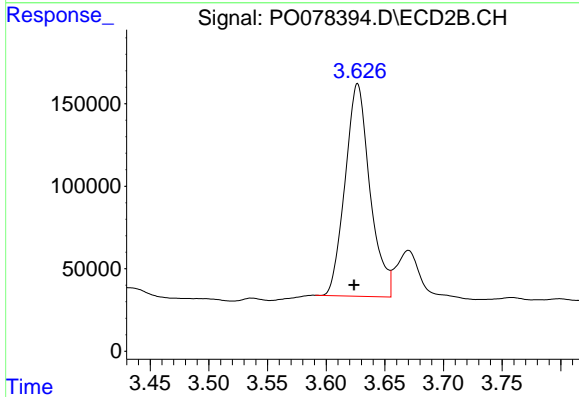




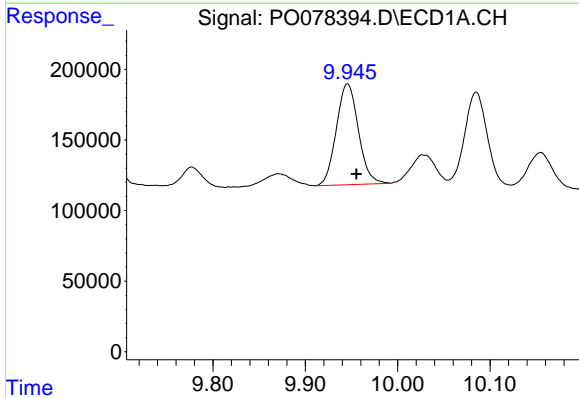
#1 Tetrachloro-m-xylene
 R.T.: 4.339 min
 Delta R.T.: -0.005 min
 Response: 4020949
 Conc: 54.40 ng/ml m

Instrument :
 ECD_O
 ClientSampled :
 18-B1(4-6)

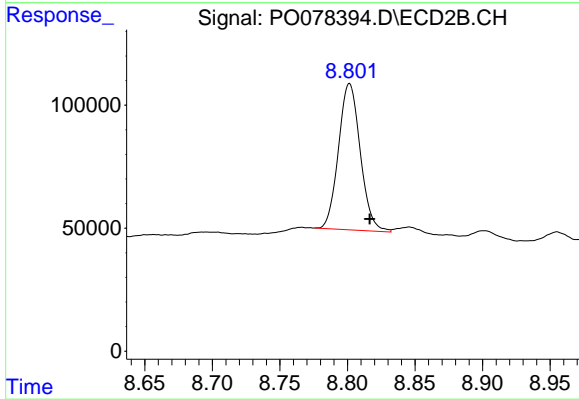
Manual Integrations
APPROVED
 Ankita
 6/4/2021 2:13:18 PM



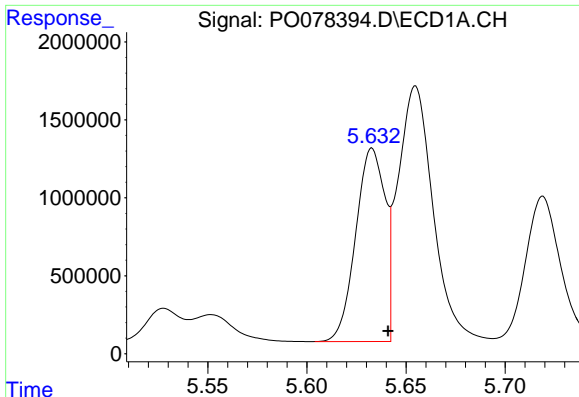
#1 Tetrachloro-m-xylene
 R.T.: 3.627 min
 Delta R.T.: 0.003 min
 Response: 1899432
 Conc: 62.86 ng/ml



#2 Decachlorobiphenyl
 R.T.: 9.946 min
 Delta R.T.: -0.010 min
 Response: 1185687
 Conc: 23.98 ng/ml



#2 Decachlorobiphenyl
 R.T.: 8.802 min
 Delta R.T.: -0.015 min
 Response: 667238
 Conc: 22.95 ng/ml



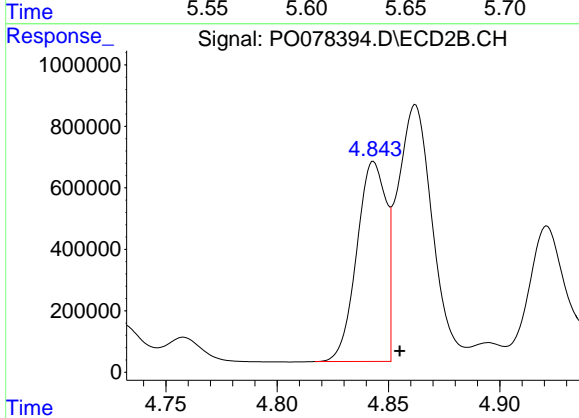
#16 AR-1242-1

R.T.: 5.633 min
 Delta R.T.: -0.008 min
 Response: 12706514
 Conc: 6916.51 ng/ml

Instrument :
 ECD_O
 ClientSampled :
 18-B1(4-6)

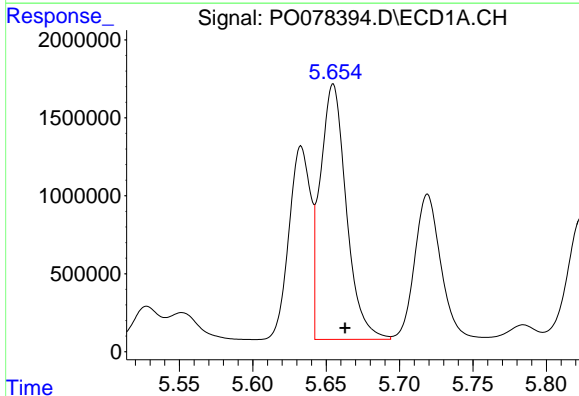
Manual Integrations
 APPROVED

Ankita
 6/4/2021 2:13:18 PM



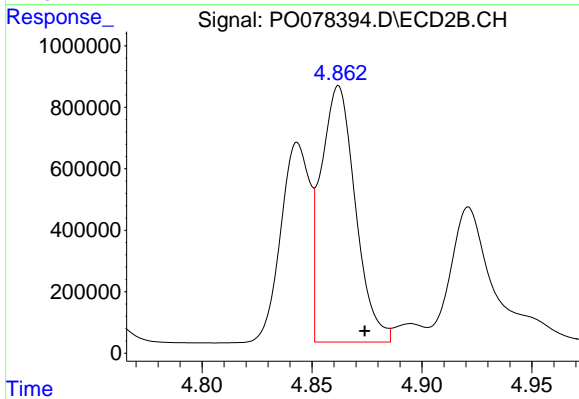
#16 AR-1242-1

R.T.: 4.843 min
 Delta R.T.: -0.012 min
 Response: 6081247
 Conc: 7080.19 ng/ml m



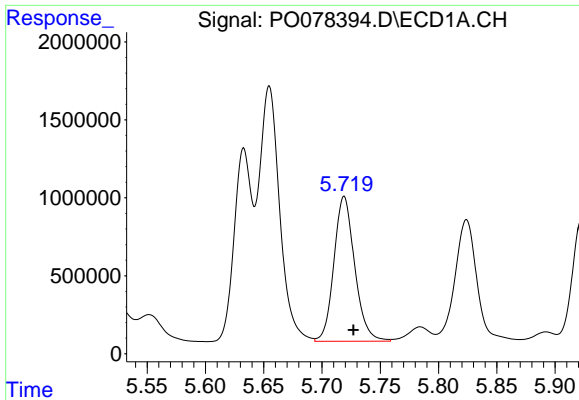
#17 AR-1242-2

R.T.: 5.655 min
 Delta R.T.: -0.008 min
 Response: 20182368
 Conc: 7471.15 ng/ml



#17 AR-1242-2

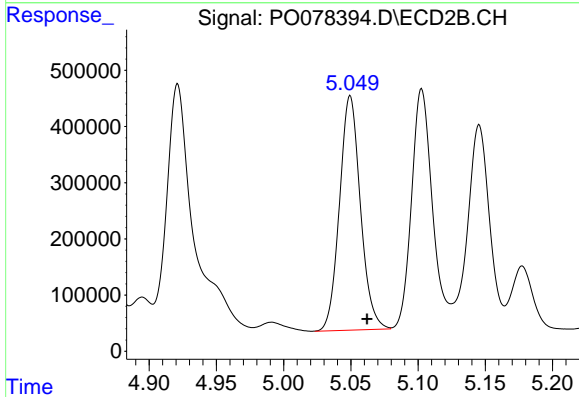
R.T.: 4.862 min
 Delta R.T.: -0.012 min
 Response: 9066075
 Conc: 7493.05 ng/ml



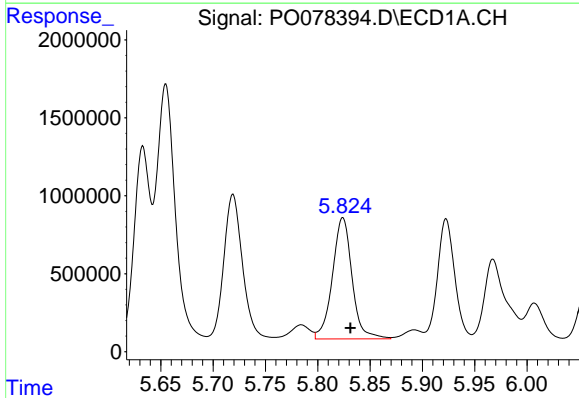
#18 AR-1242-3
 R.T.: 5.719 min
 Delta R.T.: -0.008 min
 Response: 11540000
 Conc: 6630.19 ng/ml

Instrument :
 ECD_O
ClientSampled :
 18-B1(4-6)

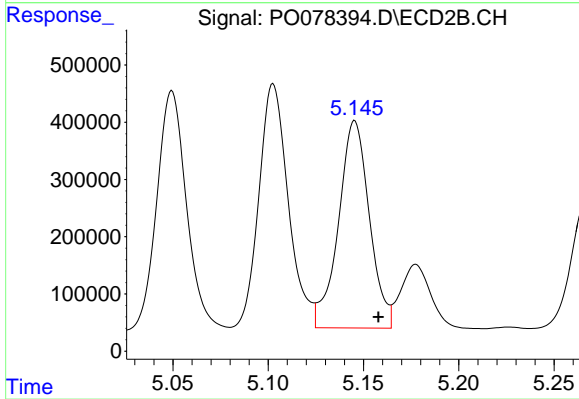
Manual Integrations
APPROVED
 Ankita
 6/4/2021 2:13:18 PM



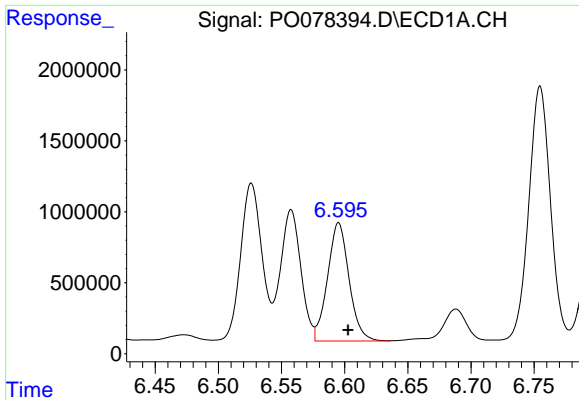
#18 AR-1242-3
 R.T.: 5.049 min
 Delta R.T.: -0.013 min
 Response: 4505185
 Conc: 6992.79 ng/ml m



#19 AR-1242-4
 R.T.: 5.824 min
 Delta R.T.: -0.007 min
 Response: 10146151
 Conc: 7257.54 ng/ml



#19 AR-1242-4
 R.T.: 5.145 min
 Delta R.T.: -0.012 min
 Response: 4086001
 Conc: 6043.91 ng/ml

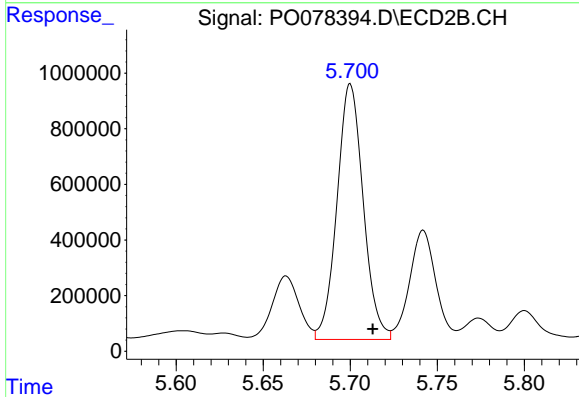


#20 AR-1242-5

R.T.: 6.595 min
 Delta R.T.: -0.007 min
 Response: 9853918
 Conc: 7363.95 ng/ml

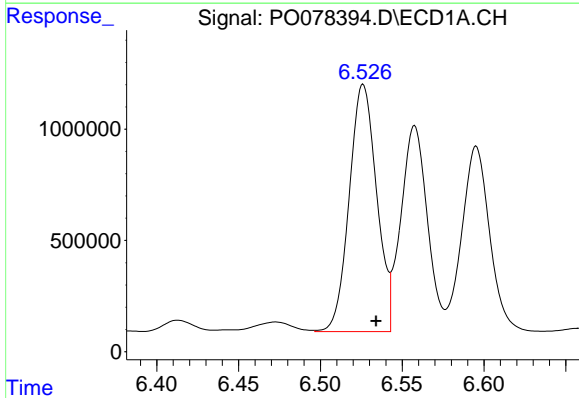
Instrument :
 ECD_O
ClientSampled :
 18-B1(4-6)

Manual Integrations
APPROVED
 Ankita
 6/4/2021 2:13:18 PM



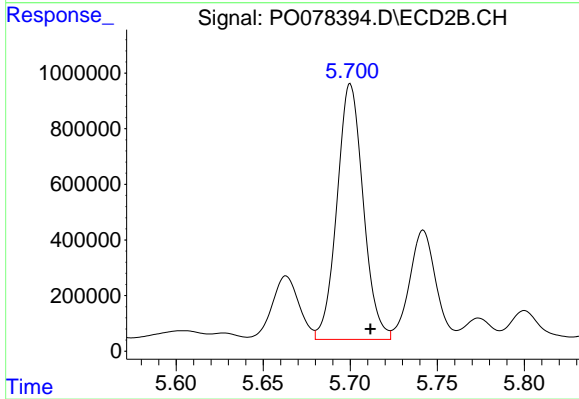
#20 AR-1242-5

R.T.: 5.700 min
 Delta R.T.: -0.013 min
 Response: 9647767
 Conc: 11765.47 ng/ml



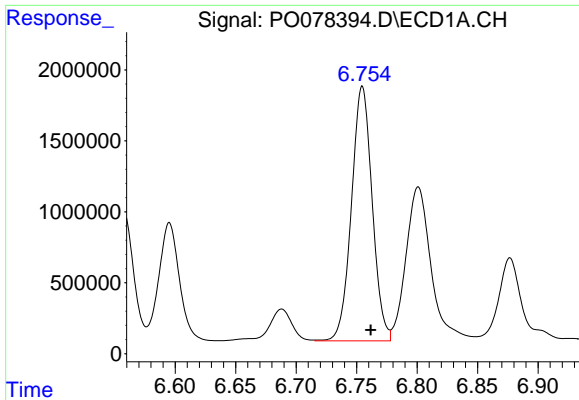
#26 AR-1254-1

R.T.: 6.526 min
 Delta R.T.: -0.008 min
 Response: 12951780
 Conc: 5218.30 ng/ml



#26 AR-1254-1

R.T.: 5.700 min
 Delta R.T.: -0.011 min
 Response: 9647767
 Conc: 5594.22 ng/ml

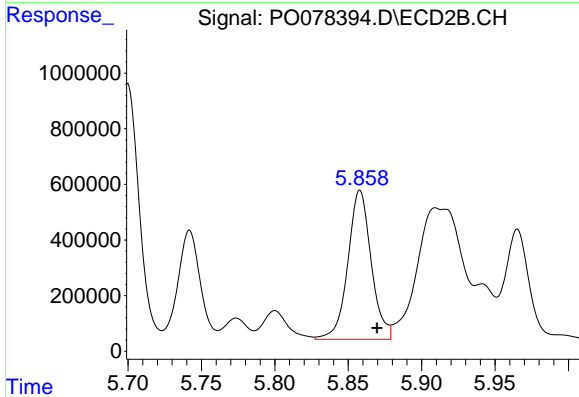


#27 AR-1254-2

R.T.: 6.755 min
 Delta R.T.: -0.007 min
 Response: 21415014
 Conc: 5518.57 ng/ml

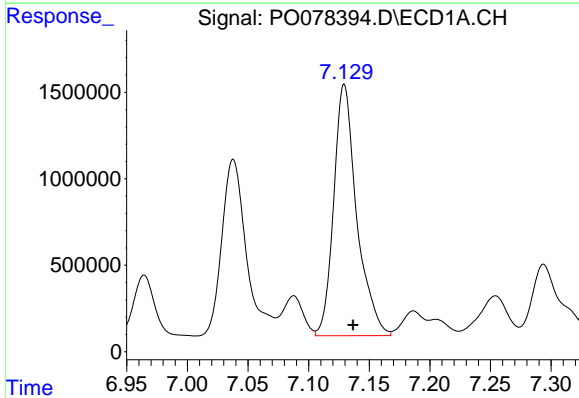
Instrument :
 ECD_O
 ClientSampled :
 18-B1(4-6)

Manual Integrations
 APPROVED
 Ankita
 6/4/2021 2:13:18 PM



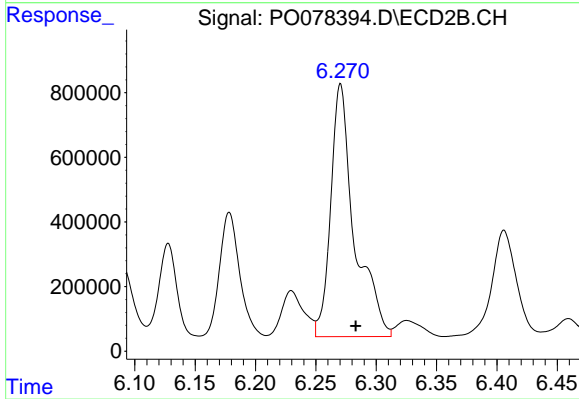
#27 AR-1254-2

R.T.: 5.858 min
 Delta R.T.: -0.012 min
 Response: 5925200
 Conc: 3696.39 ng/ml



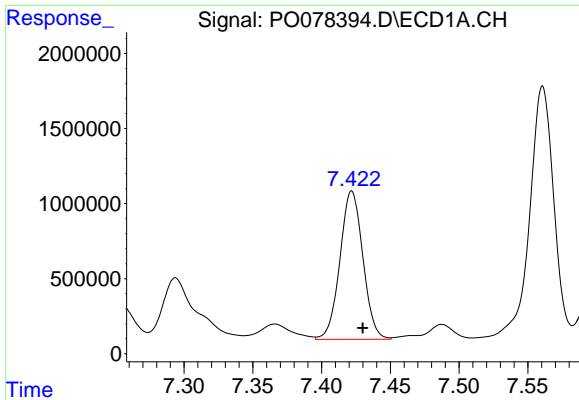
#28 AR-1254-3

R.T.: 7.129 min
 Delta R.T.: -0.007 min
 Response: 19241958
 Conc: 4904.48 ng/ml



#28 AR-1254-3

R.T.: 6.270 min
 Delta R.T.: -0.013 min
 Response: 10703567
 Conc: 4484.58 ng/ml

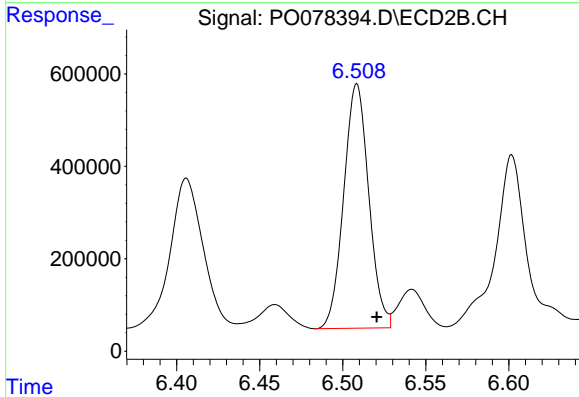


#29 AR-1254-4

R.T.: 7.422 min
 Delta R.T.: -0.008 min
 Response: 11479511
 Conc: 4227.10 ng/ml

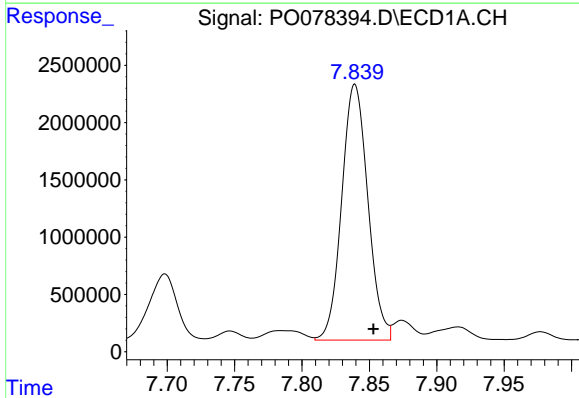
Instrument :
 ECD_O
ClientSampled :
 18-B1(4-6)

Manual Integrations
APPROVED
 Ankita
 6/4/2021 2:13:18 PM



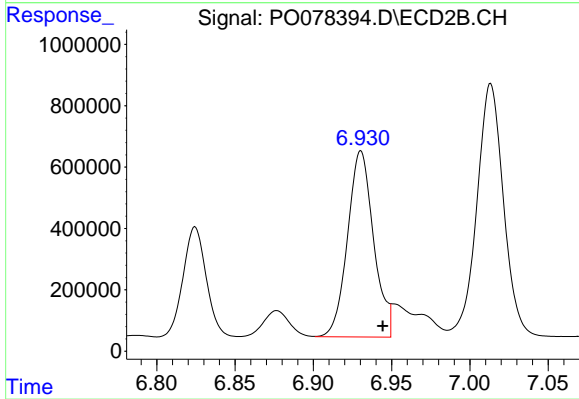
#29 AR-1254-4

R.T.: 6.509 min
 Delta R.T.: -0.012 min
 Response: 5557603
 Conc: 3827.92 ng/ml



#30 AR-1254-5

R.T.: 7.839 min
 Delta R.T.: -0.014 min
 Response: 30217352
 Conc: 10332.55 ng/ml



#30 AR-1254-5

R.T.: 6.930 min
 Delta R.T.: -0.014 min
 Response: 7043339
 Conc: 3098.78 ng/ml m