

Data Path : Z:\pestpcbsrv\HPCHEM1\ECD\_O\Data\P0060322\  
 Data File : P0086906.D  
 Signal(s) : Signal #1: ECD1A.CH Signal #2: ECD2B.CH  
 Acq On : 03 Jun 2022 14:34  
 Operator : YP\AJ  
 Sample : N2986-04DL 50X  
 Misc :  
 ALS Vial : 48 Sample Multiplier: 1

Instrument :  
 ECD\_O  
 ClientSampleId :

Integration File signal 1: autoint1.e  
 Integration File signal 2: autoint2.e  
 Quant Time: Jun 03 23:01:38 2022  
 Quant Method : Z:\pestpcbsrv\HPCHEM1\ECD\_O\methods\P0060122.M  
 Quant Title : GC EXTRACTABLES  
 QLast Update : Wed Jun 01 17:55:39 2022  
 Response via : Initial Calibration  
 Integrator: ChemStation 6890 Scale Mode: Small noise peaks clipped

Volume Inj. : 2 µl  
 Signal #1 Phase : ZB-MR1 Signal #2 Phase: ZB-MR2  
 Signal #1 Info : 30Mx0.32mmx 0.50µ Signal #2 Info : 30M x 0.32mm x 0.25µm

	Compound	RT#1	RT#2	Resp#1	Resp#2	ng/ml	ng/ml
-----							
System Monitoring Compounds							
1)	SA Tetrachlo...	4.517	3.665	45023	24776	0.787	0.775
2)	SA Decachlor...	10.394	8.692	52724	15852	1.155	0.707 #
Target Compounds							
3)	L1 AR-1016-1	5.636f	0.000	17287	0	8.706	N.D. #
7)	L1 AR-1016-5	6.218f	0.000	895	0	0.651	N.D. #
8)	L2 AR-1221-1	4.725	0.000	1013	0	1.525	N.D. #
15)	L3 AR-1232-5	5.980	0.000	2537	0	4.842	N.D. #
16)	L4 AR-1242-1	5.636f	0.000	17287	0	10.814	N.D. #
20)	L4 AR-1242-5	6.632	5.563	11982	52650	10.190	78.397 #
21)	L5 AR-1248-1	5.636f	0.000	17287	0	14.176	N.D. #
22)	L5 AR-1248-2	5.980	0.000	2537	0	1.450	N.D. #
23)	L5 AR-1248-3	6.218f	0.000	895	0	0.463	N.D. #
24)	L5 AR-1248-4	6.565	0.000	132394	0	61.642	N.D. #
25)	L5 AR-1248-5	6.632	5.587	11982	3686	5.846	3.965 #
26)	L6 AR-1254-1	6.565	5.563	132394	52650	59.585	36.609 #
27)	L6 AR-1254-2	6.783	5.710	295254	131621	86.178	106.236
28)	L6 AR-1254-3	7.154	6.131	171658	442044	49.134	220.060 #
29)	L6 AR-1254-4	7.441	6.342	160190	35215	62.450	28.536 #
30)	L6 AR-1254-5	7.861	6.760	3170367	1466480	1146.221	846.639 #
31)	L7 AR-1260-1	7.319	6.245	1627897	783308	655.933	604.879
32)	L7 AR-1260-2	7.578	6.432	2445430	1197454	721.326	775.259
33)	L7 AR-1260-3	7.939	6.587	2093605	824888	968.915	474.655 #
34)	L7 AR-1260-4	8.169	7.059	2196115	926955	854.635	814.409
35)	L7 AR-1260-5	8.498	7.299	3770139	2077617	793.398	782.292
36)	L8 AR-1262-1	7.939	6.800	2093605	1105364	630.358	639.249
37)	L8 AR-1262-2	8.498	7.299	3770139	2077617	658.924	691.840
38)	L8 AR-1262-3	8.836	7.584	2984434	537324	757.934	448.181 #
39)	L8 AR-1262-4	8.916	7.646	781520	1693421	260.954	774.780 #
40)	L8 AR-1262-5	9.599	8.142	1245507	505849	602.345	501.535
41)	L9 AR-1268-1	8.836	7.584	2984434	537324	424.887	156.797 #
42)	L9 AR-1268-2	8.916	7.646	781520	1693421	122.061	539.982 #
43)	L9 AR-1268-3	9.156	7.857	40681	19495	7.479	7.366
44)	L9 AR-1268-4	9.599	8.142	1245507	505849	527.430	442.826
45)	L9 AR-1268-5	10.036	8.435	285972	111385	15.894	12.753
-----							

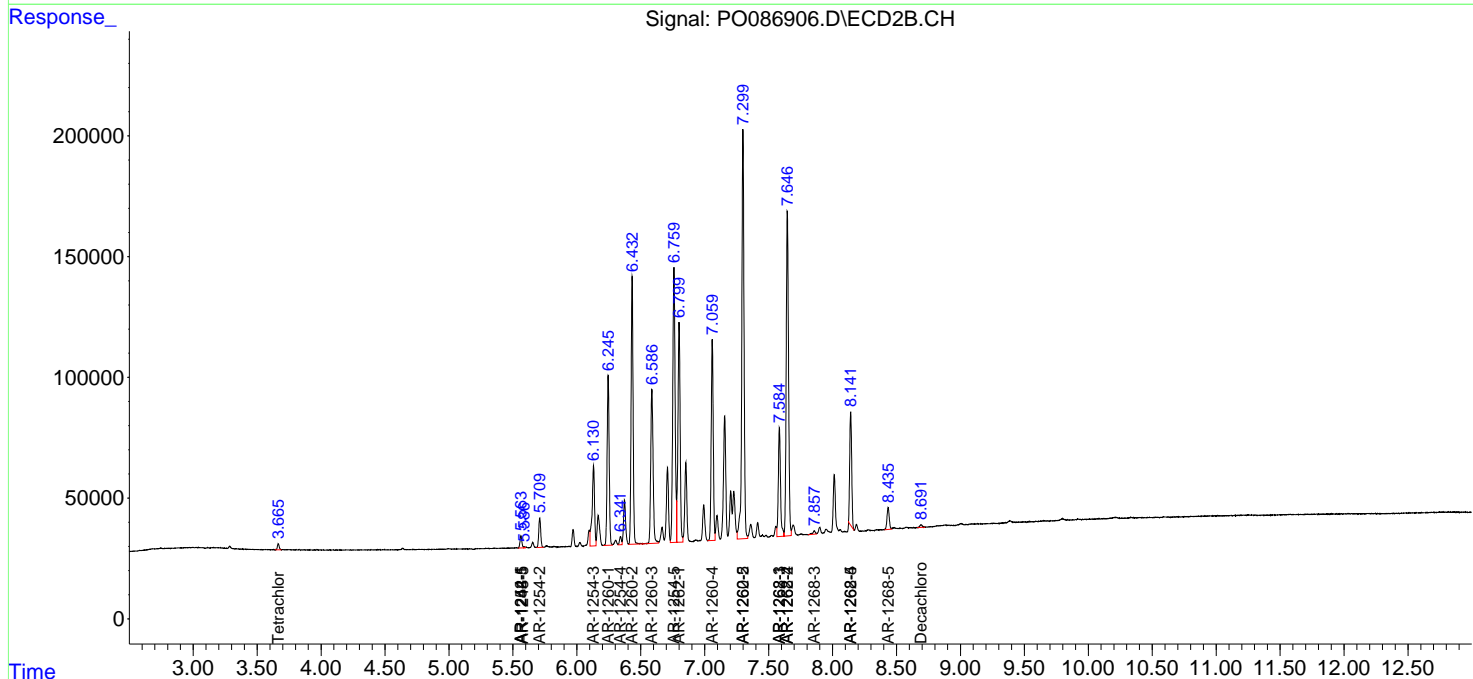
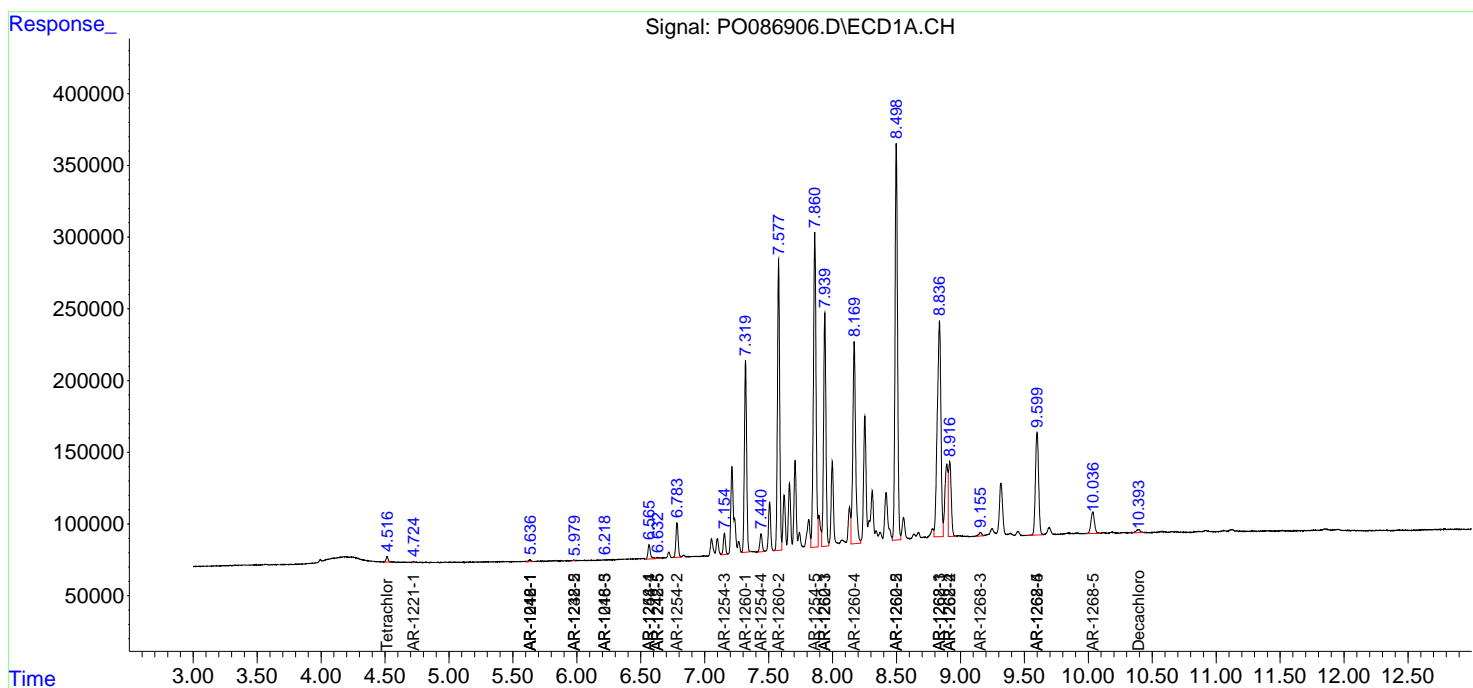
(f)=RT Delta > 1/2 Window (#)=Amounts differ by > 25% (m)=manual int.

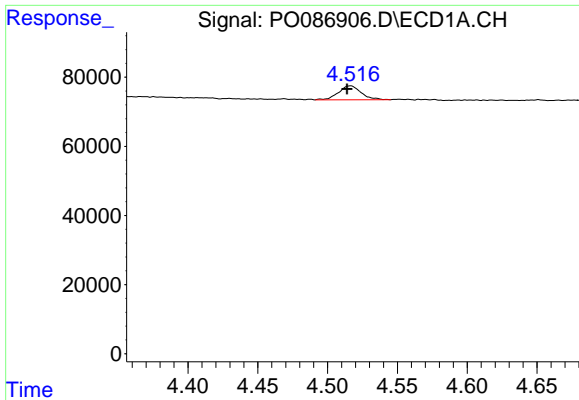
Data Path : Z:\pestpcbsrv\HPCHEM1\ECD\_O\Data\P0060322\  
 Data File : P0086906.D  
 Signal(s) : Signal #1: ECD1A.CH Signal #2: ECD2B.CH  
 Acq On : 03 Jun 2022 14:34  
 Operator : YP\AJ  
 Sample : N2986-04DL 50X  
 Misc :  
 ALS Vial : 48 Sample Multiplier: 1

Instrument :  
 ECD\_O  
 ClientSampleId :

Integration File signal 1: autoint1.e  
 Integration File signal 2: autoint2.e  
 Quant Time: Jun 03 23:01:38 2022  
 Quant Method : Z:\pestpcbsrv\HPCHEM1\ECD\_O\methods\P0060122.M  
 Quant Title : GC EXTRACTABLES  
 QLast Update : Wed Jun 01 17:55:39 2022  
 Response via : Initial Calibration  
 Integrator: ChemStation 6890 Scale Mode: Small noise peaks clipped

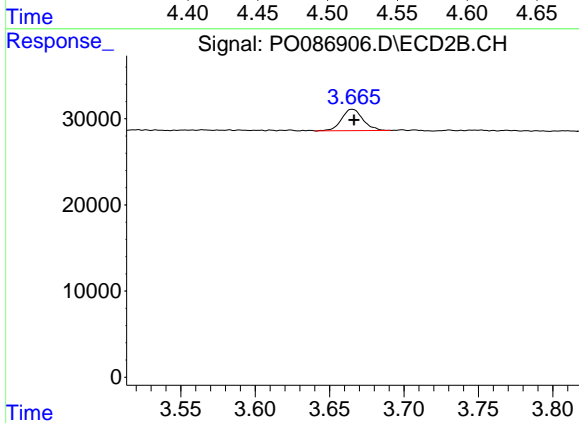
Volume Inj. : 2 µl  
 Signal #1 Phase : ZB-MR1 Signal #2 Phase: ZB-MR2  
 Signal #1 Info : 30Mx0.32mmx 0.50µ Signal #2 Info : 30M x 0.32mm x 0.25µm



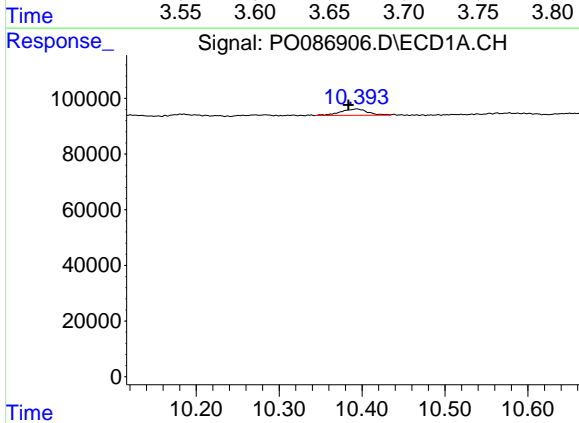


#1 Tetrachloro-m-xylene  
 R.T.: 4.517 min  
 Delta R.T.: 0.003 min  
 Response: 45023  
 Conc: 0.79 ng/ml

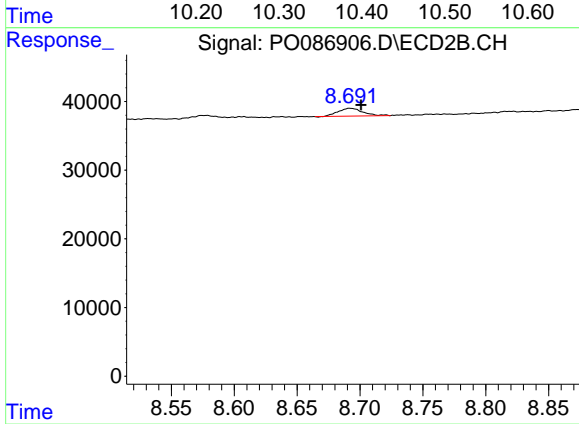
Instrument :  
 ECD\_O  
 ClientSampleId :



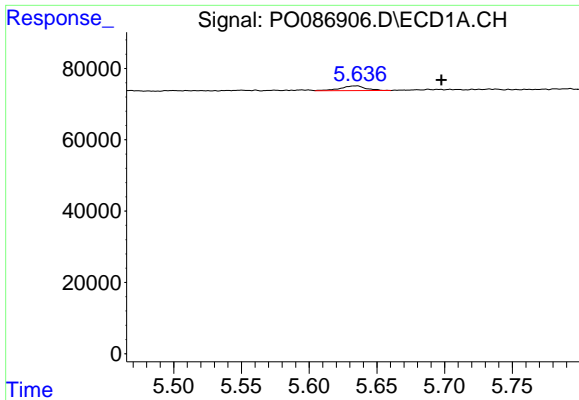
#1 Tetrachloro-m-xylene  
 R.T.: 3.665 min  
 Delta R.T.: -0.001 min  
 Response: 24776  
 Conc: 0.78 ng/ml



#2 Decachlorobiphenyl  
 R.T.: 10.394 min  
 Delta R.T.: 0.010 min  
 Response: 52724  
 Conc: 1.16 ng/ml



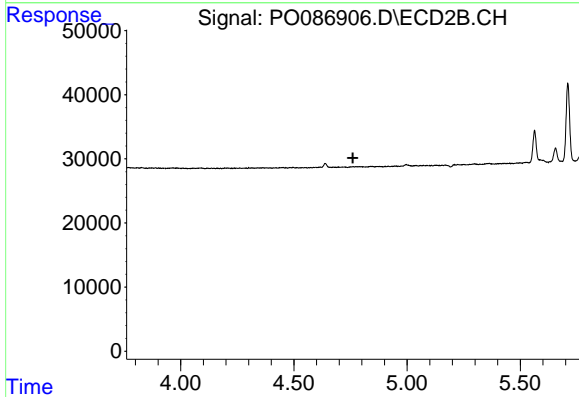
#2 Decachlorobiphenyl  
 R.T.: 8.692 min  
 Delta R.T.: -0.009 min  
 Response: 15852  
 Conc: 0.71 ng/ml



#3 AR-1016-1

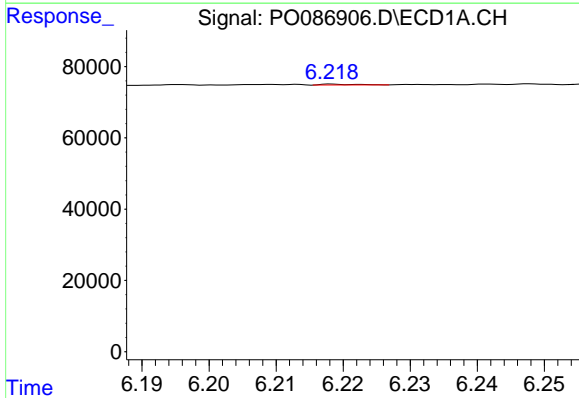
R.T.: 5.636 min  
 Delta R.T.: -0.062 min  
 Response: 17287  
 Conc: 8.71 ng/ml

Instrument :  
 ECD\_O  
 ClientSampleId :



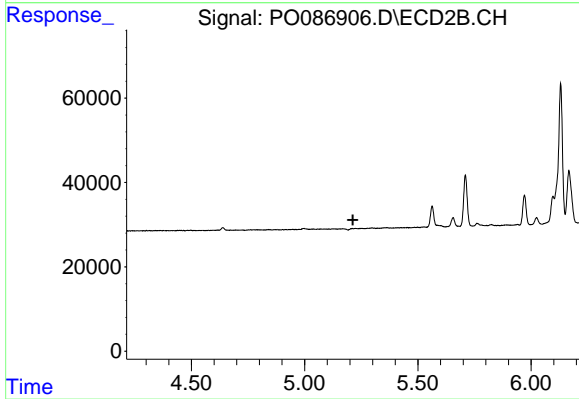
#3 AR-1016-1

R.T.: 0.000 min  
 Exp R.T. : 4.761 min  
 Response: 0  
 Conc: N.D.



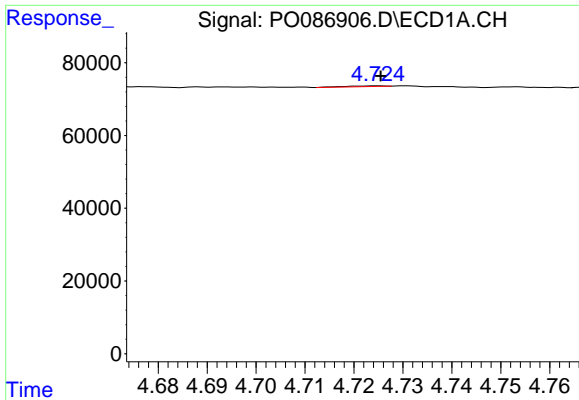
#7 AR-1016-5

R.T.: 6.218 min  
 Delta R.T.: 0.037 min  
 Response: 895  
 Conc: 0.65 ng/ml



#7 AR-1016-5

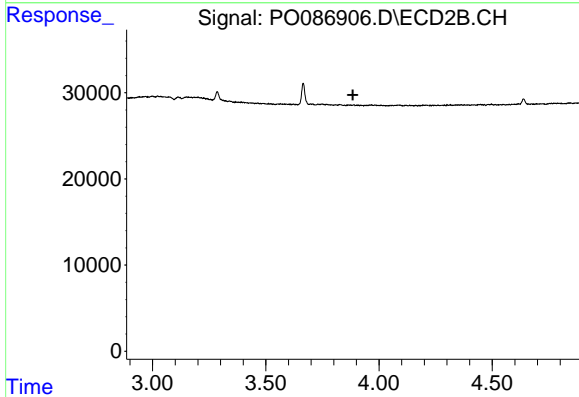
R.T.: 0.000 min  
 Exp R.T. : 5.213 min  
 Response: 0  
 Conc: N.D.



#8 AR-1221-1

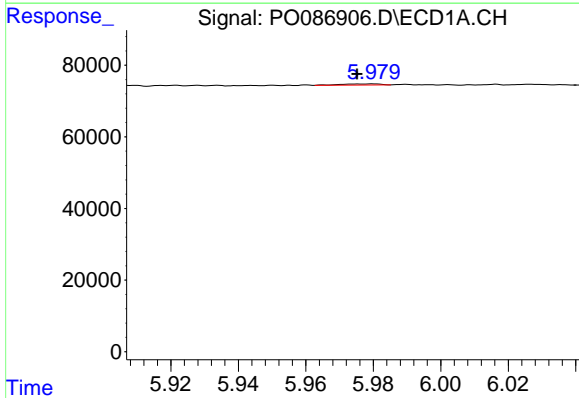
R.T.: 4.725 min  
 Delta R.T.: 0.000 min  
 Response: 1013  
 Conc: 1.53 ng/ml

Instrument :  
 ECD\_O  
 ClientSampleId :



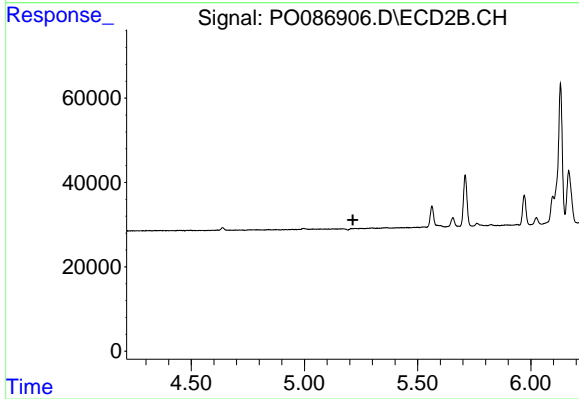
#8 AR-1221-1

R.T.: 0.000 min  
 Exp R.T. : 3.885 min  
 Response: 0  
 Conc: N.D.



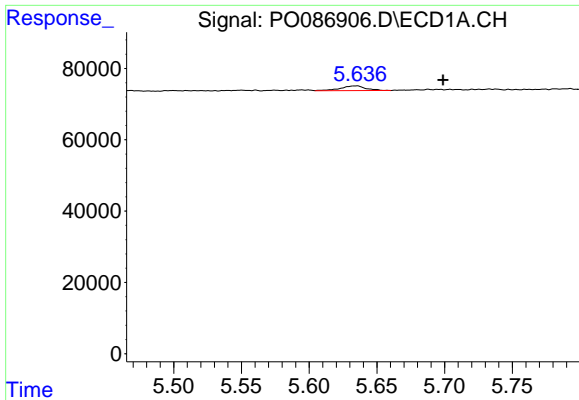
#15 AR-1232-5

R.T.: 5.980 min  
 Delta R.T.: 0.005 min  
 Response: 2537  
 Conc: 4.84 ng/ml



#15 AR-1232-5

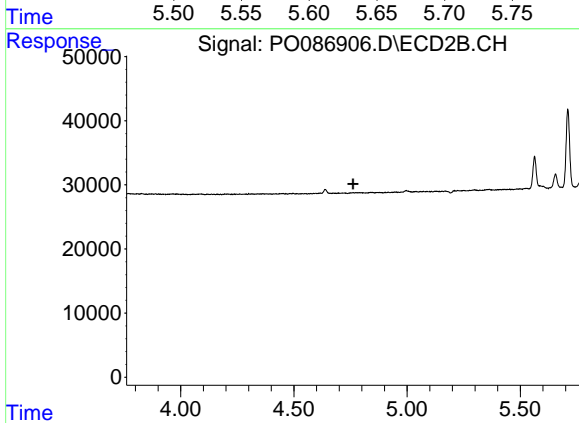
R.T.: 0.000 min  
 Exp R.T. : 5.214 min  
 Response: 0  
 Conc: N.D.



#16 AR-1242-1

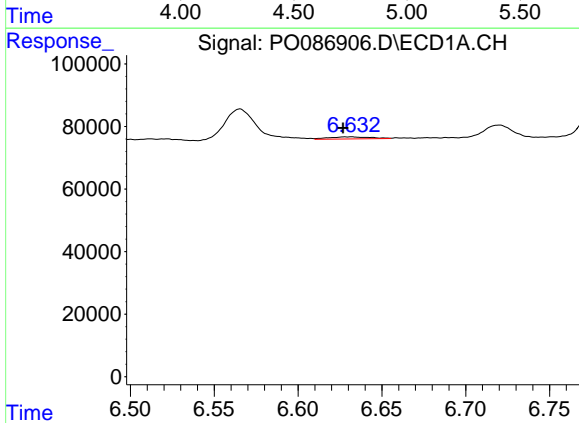
R.T.: 5.636 min  
 Delta R.T.: -0.063 min  
 Response: 17287  
 Conc: 10.81 ng/ml

Instrument :  
 ECD\_O  
 ClientSampleId :



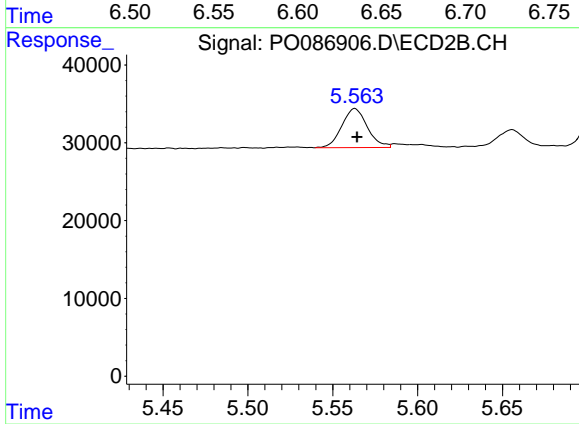
#16 AR-1242-1

R.T.: 0.000 min  
 Exp R.T. : 4.761 min  
 Response: 0  
 Conc: N.D.



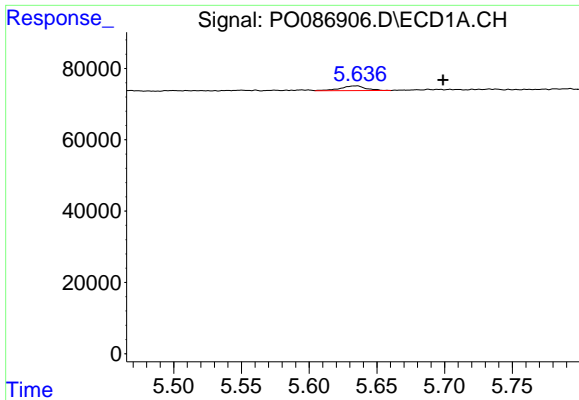
#20 AR-1242-5

R.T.: 6.632 min  
 Delta R.T.: 0.005 min  
 Response: 11982  
 Conc: 10.19 ng/ml



#20 AR-1242-5

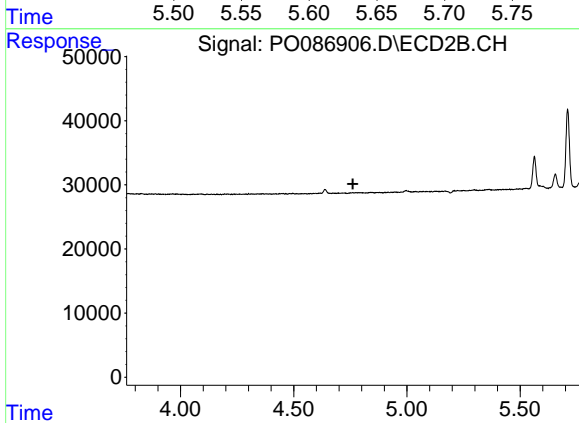
R.T.: 5.563 min  
 Delta R.T.: -0.001 min  
 Response: 52650  
 Conc: 78.40 ng/ml



#21 AR-1248-1

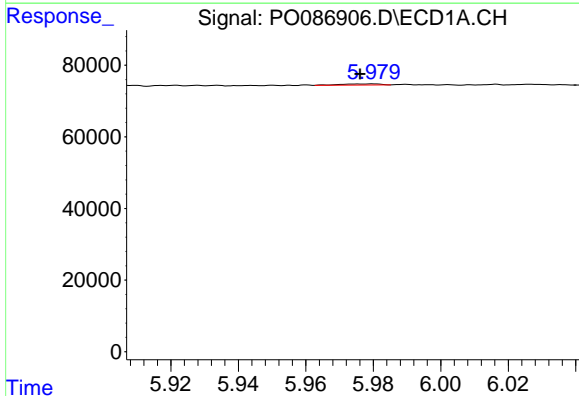
R.T.: 5.636 min  
 Delta R.T.: -0.063 min  
 Response: 17287  
 Conc: 14.18 ng/ml

Instrument :  
 ECD\_O  
 ClientSampleId :



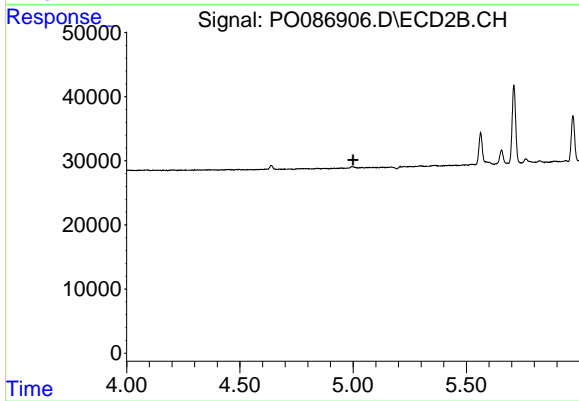
#21 AR-1248-1

R.T.: 0.000 min  
 Exp R.T. : 4.761 min  
 Response: 0  
 Conc: N.D.



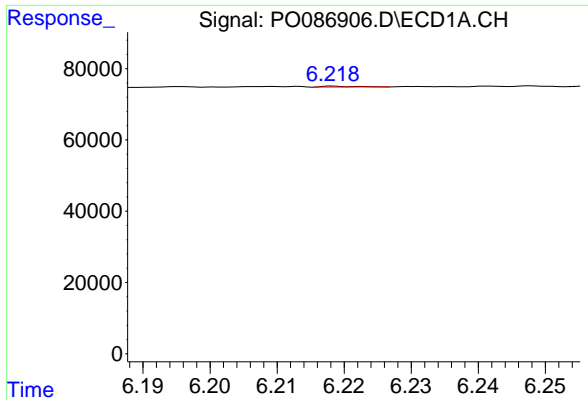
#22 AR-1248-2

R.T.: 5.980 min  
 Delta R.T.: 0.004 min  
 Response: 2537  
 Conc: 1.45 ng/ml



#22 AR-1248-2

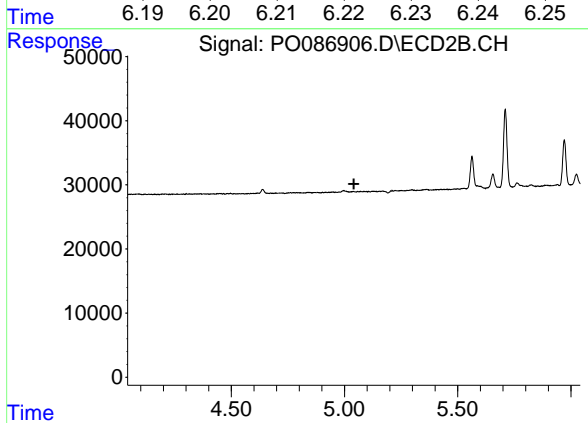
R.T.: 0.000 min  
 Exp R.T. : 4.999 min  
 Response: 0  
 Conc: N.D.



#23 AR-1248-3

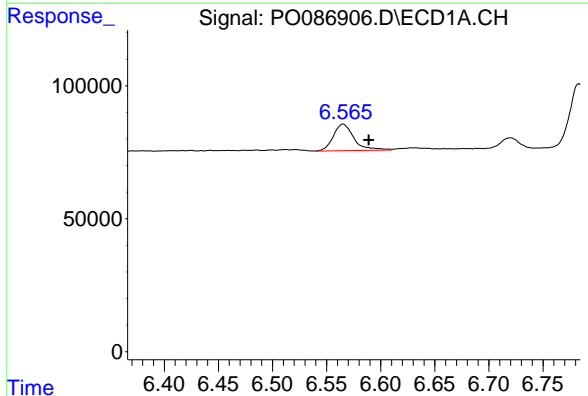
R.T.: 6.218 min  
 Delta R.T.: 0.036 min  
 Response: 895  
 Conc: 0.46 ng/ml

Instrument :  
 ECD\_O  
 ClientSampleId :



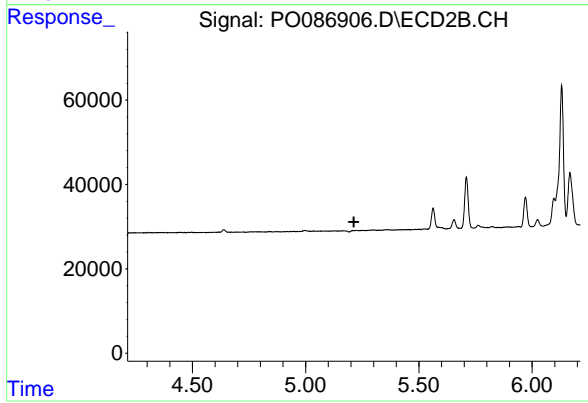
#23 AR-1248-3

R.T.: 0.000 min  
 Exp R.T. : 5.041 min  
 Response: 0  
 Conc: N.D.



#24 AR-1248-4

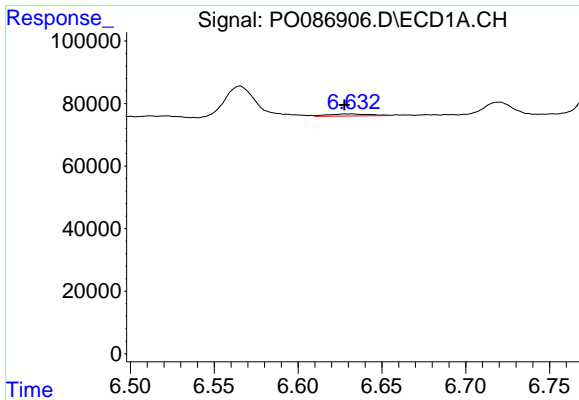
R.T.: 6.565 min  
 Delta R.T.: -0.024 min  
 Response: 132394  
 Conc: 61.64 ng/ml



#24 AR-1248-4

R.T.: 0.000 min  
 Exp R.T. : 5.213 min  
 Response: 0  
 Conc: N.D.

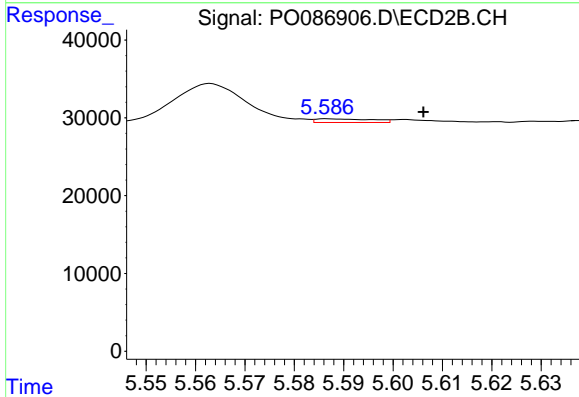




#25 AR-1248-5

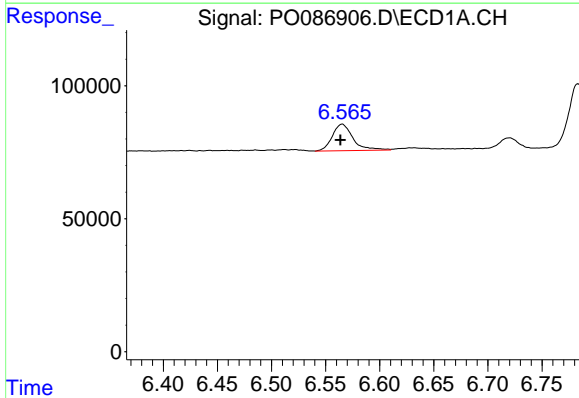
R.T.: 6.632 min  
 Delta R.T.: 0.004 min  
 Response: 11982  
 Conc: 5.85 ng/ml

Instrument :  
 ECD\_O  
 ClientSampleId :



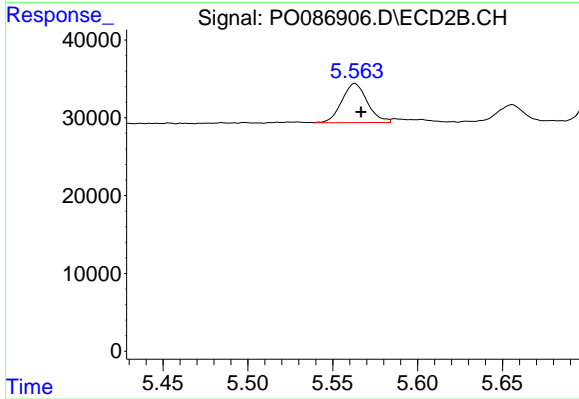
#25 AR-1248-5

R.T.: 5.587 min  
 Delta R.T.: -0.019 min  
 Response: 3686  
 Conc: 3.96 ng/ml



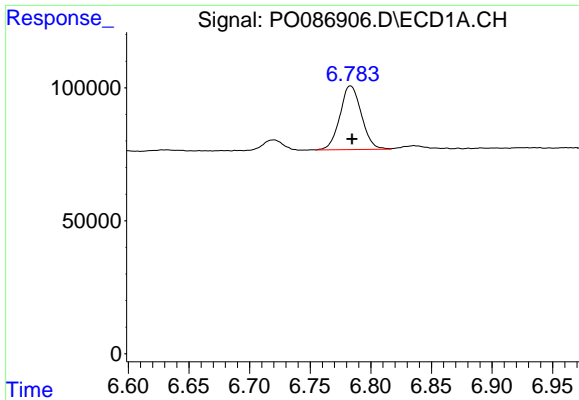
#26 AR-1254-1

R.T.: 6.565 min  
 Delta R.T.: 0.002 min  
 Response: 132394  
 Conc: 59.58 ng/ml



#26 AR-1254-1

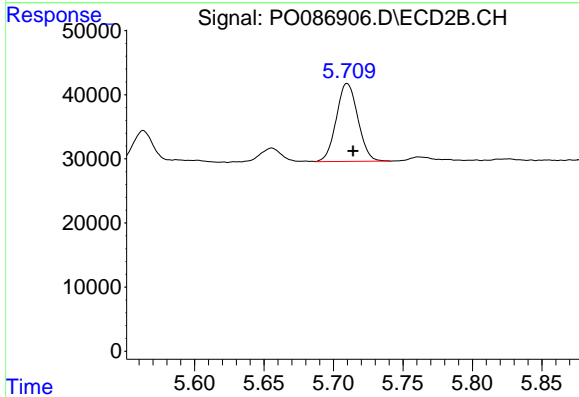
R.T.: 5.563 min  
 Delta R.T.: -0.004 min  
 Response: 52650  
 Conc: 36.61 ng/ml



#27 AR-1254-2

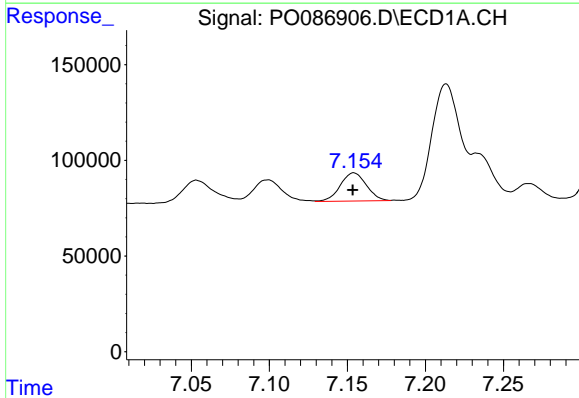
R.T.: 6.783 min  
 Delta R.T.: -0.001 min  
 Response: 295254  
 Conc: 86.18 ng/ml

Instrument :  
 ECD\_O  
 ClientSampleId :



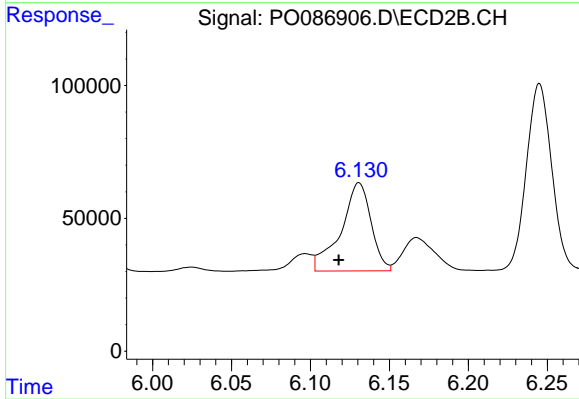
#27 AR-1254-2

R.T.: 5.710 min  
 Delta R.T.: -0.004 min  
 Response: 131621  
 Conc: 106.24 ng/ml



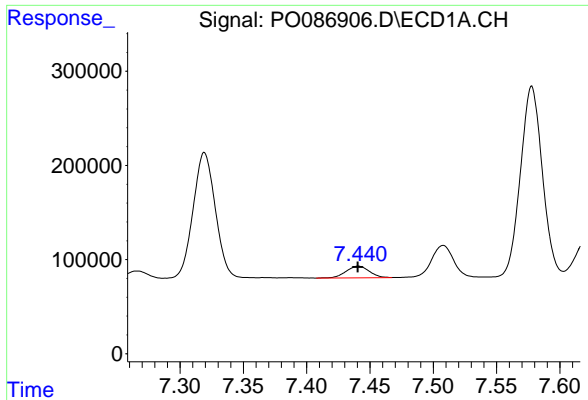
#28 AR-1254-3

R.T.: 7.154 min  
 Delta R.T.: 0.000 min  
 Response: 171658  
 Conc: 49.13 ng/ml



#28 AR-1254-3

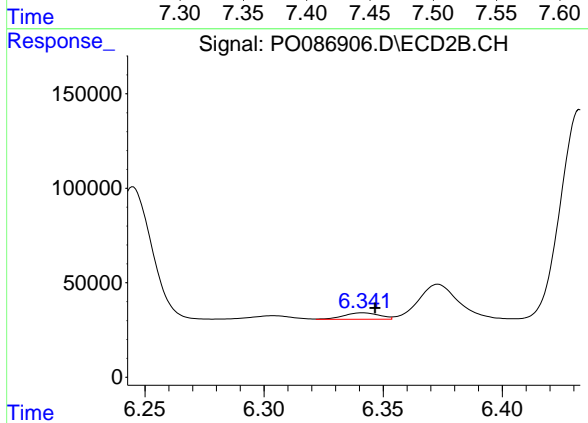
R.T.: 6.131 min  
 Delta R.T.: 0.013 min  
 Response: 442044  
 Conc: 220.06 ng/ml



#29 AR-1254-4

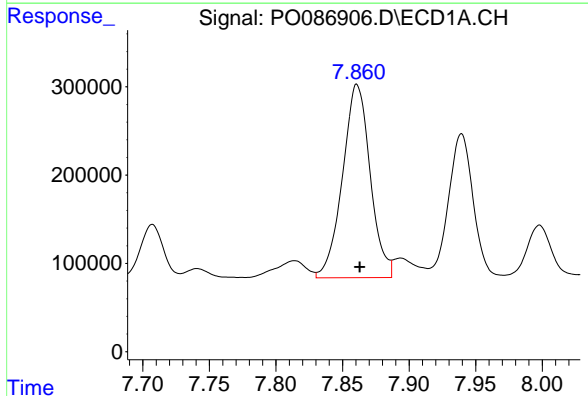
R.T.: 7.441 min  
 Delta R.T.: 0.000 min  
 Response: 160190  
 Conc: 62.45 ng/ml

Instrument :  
 ECD\_O  
 ClientSampleId :



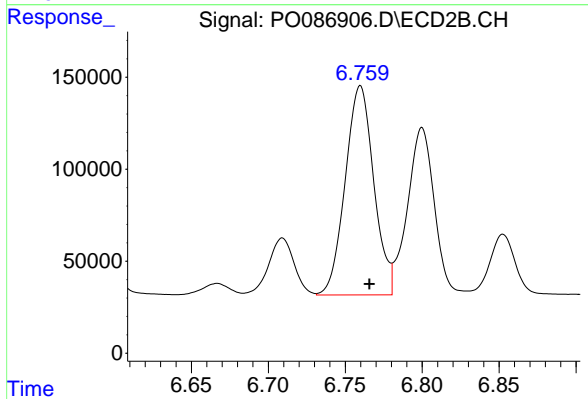
#29 AR-1254-4

R.T.: 6.342 min  
 Delta R.T.: -0.005 min  
 Response: 35215  
 Conc: 28.54 ng/ml



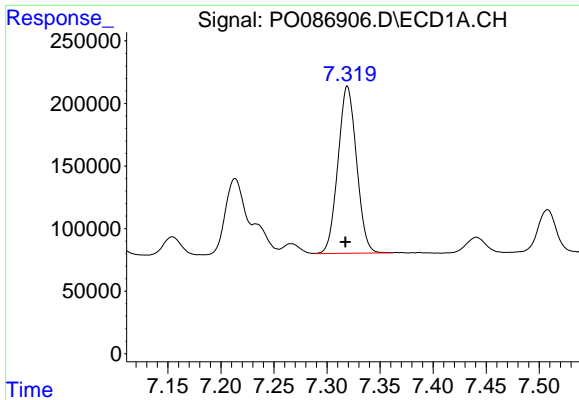
#30 AR-1254-5

R.T.: 7.861 min  
 Delta R.T.: -0.002 min  
 Response: 3170367  
 Conc: 1146.22 ng/ml



#30 AR-1254-5

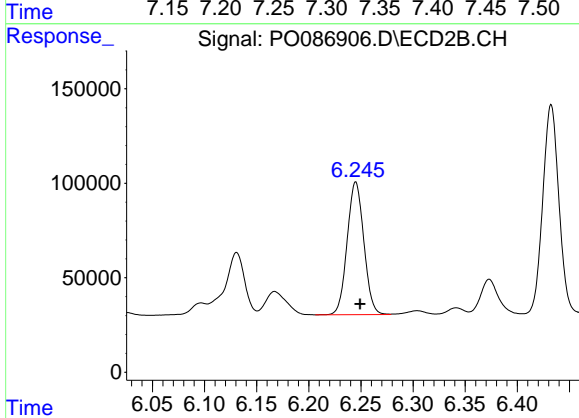
R.T.: 6.760 min  
 Delta R.T.: -0.006 min  
 Response: 1466480  
 Conc: 846.64 ng/ml



#31 AR-1260-1

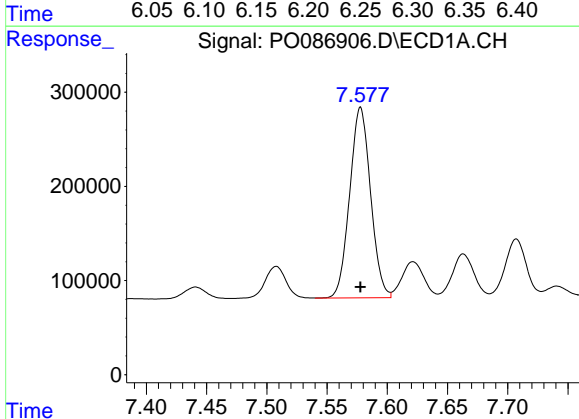
R.T.: 7.319 min  
 Delta R.T.: 0.002 min  
 Response: 1627897  
 Conc: 655.93 ng/ml

Instrument :  
 ECD\_O  
 ClientSampleId :



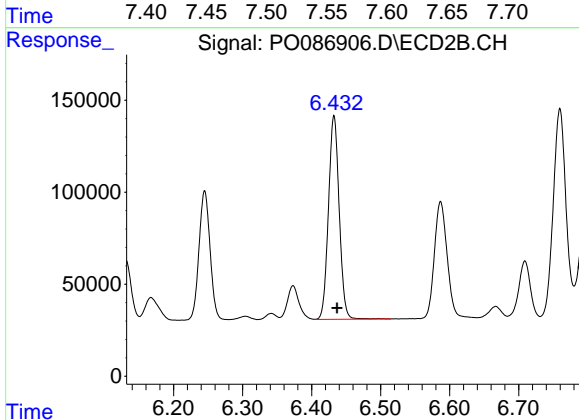
#31 AR-1260-1

R.T.: 6.245 min  
 Delta R.T.: -0.004 min  
 Response: 783308  
 Conc: 604.88 ng/ml



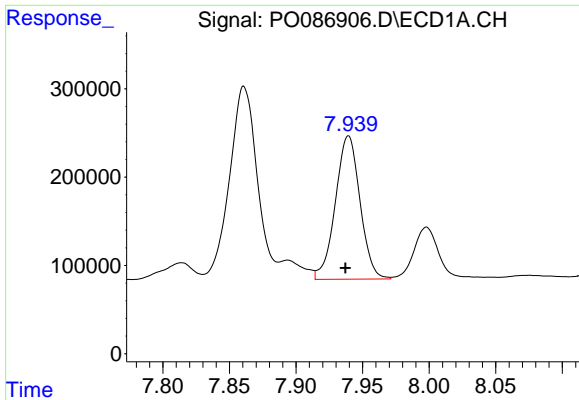
#32 AR-1260-2

R.T.: 7.578 min  
 Delta R.T.: 0.000 min  
 Response: 2445430  
 Conc: 721.33 ng/ml



#32 AR-1260-2

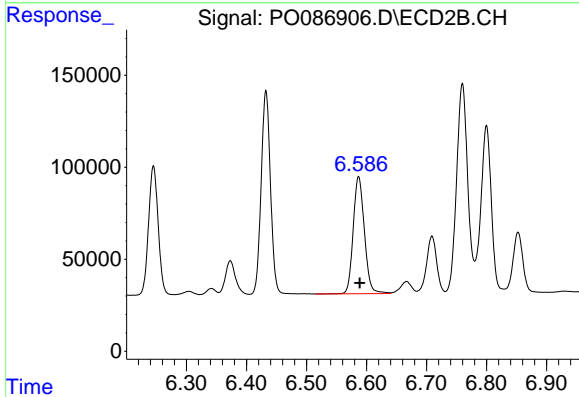
R.T.: 6.432 min  
 Delta R.T.: -0.004 min  
 Response: 1197454  
 Conc: 775.26 ng/ml



#33 AR-1260-3

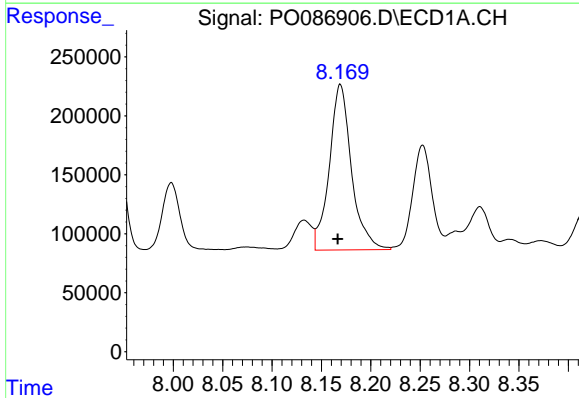
R.T.: 7.939 min  
 Delta R.T.: 0.002 min  
 Response: 2093605  
 Conc: 968.92 ng/ml

Instrument :  
 ECD\_O  
 ClientSampleId :



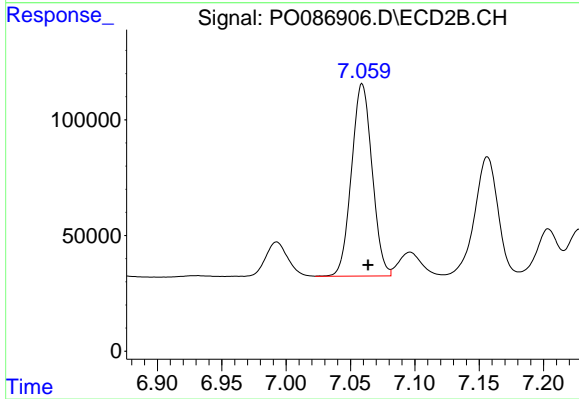
#33 AR-1260-3

R.T.: 6.587 min  
 Delta R.T.: -0.002 min  
 Response: 824888  
 Conc: 474.66 ng/ml



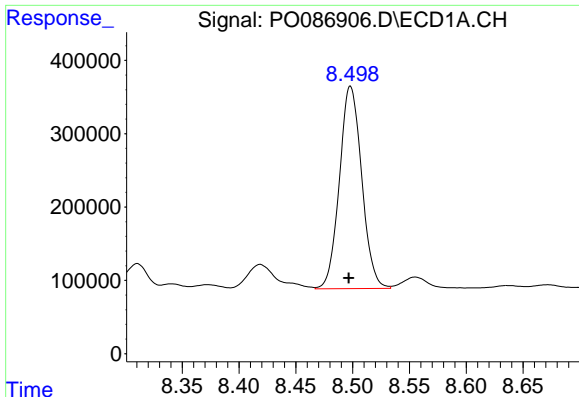
#34 AR-1260-4

R.T.: 8.169 min  
 Delta R.T.: 0.003 min  
 Response: 2196115  
 Conc: 854.63 ng/ml



#34 AR-1260-4

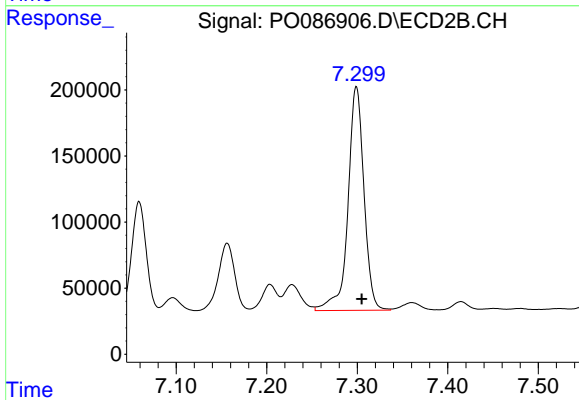
R.T.: 7.059 min  
 Delta R.T.: -0.004 min  
 Response: 926955  
 Conc: 814.41 ng/ml



#35 AR-1260-5

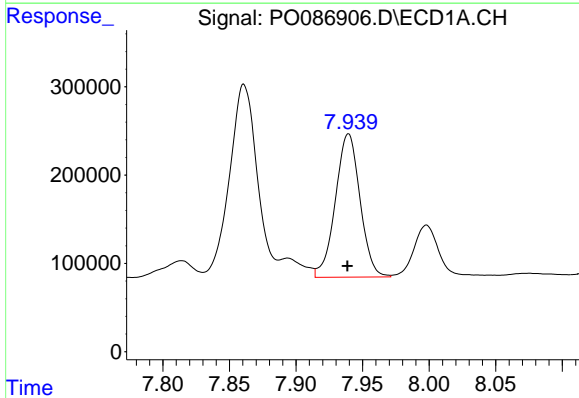
R.T.: 8.498 min  
 Delta R.T.: 0.001 min  
 Response: 3770139  
 Conc: 793.40 ng/ml

Instrument :  
 ECD\_O  
 ClientSampleId :



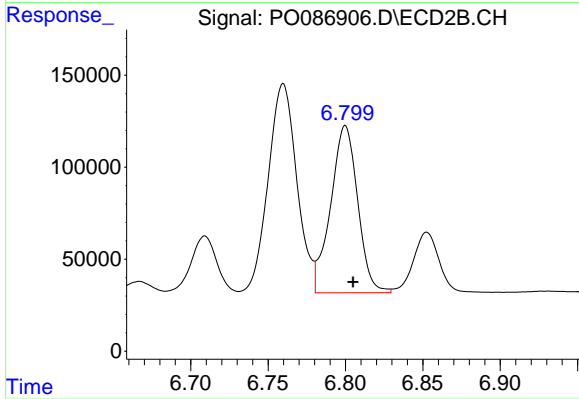
#35 AR-1260-5

R.T.: 7.299 min  
 Delta R.T.: -0.006 min  
 Response: 2077617  
 Conc: 782.29 ng/ml



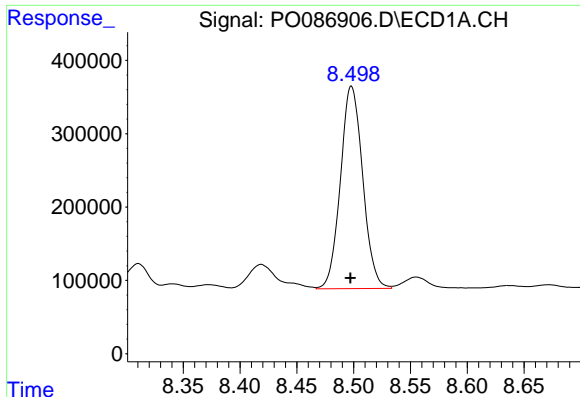
#36 AR-1262-1

R.T.: 7.939 min  
 Delta R.T.: 0.000 min  
 Response: 2093605  
 Conc: 630.36 ng/ml



#36 AR-1262-1

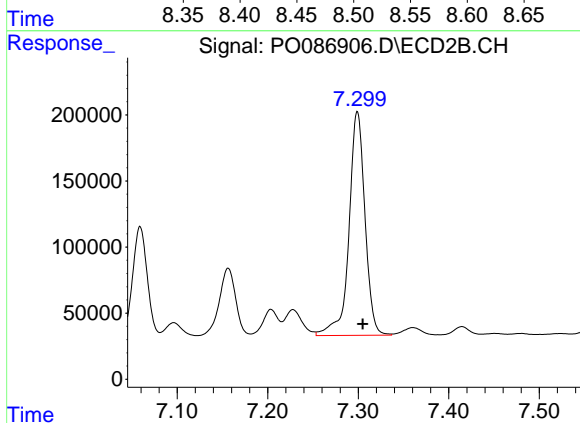
R.T.: 6.800 min  
 Delta R.T.: -0.005 min  
 Response: 1105364  
 Conc: 639.25 ng/ml



#37 AR-1262-2

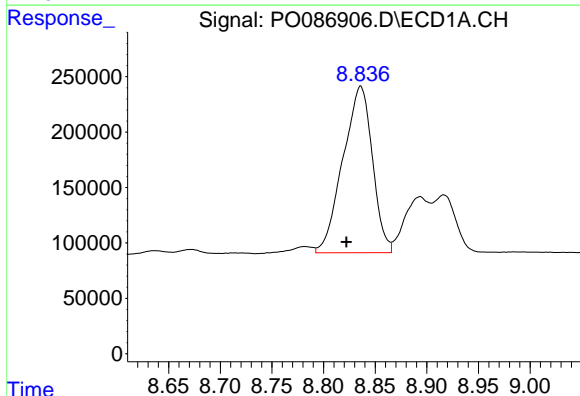
R.T.: 8.498 min  
 Delta R.T.: 0.000 min  
 Response: 3770139  
 Conc: 658.92 ng/ml

Instrument :  
 ECD\_O  
 ClientSampleId :



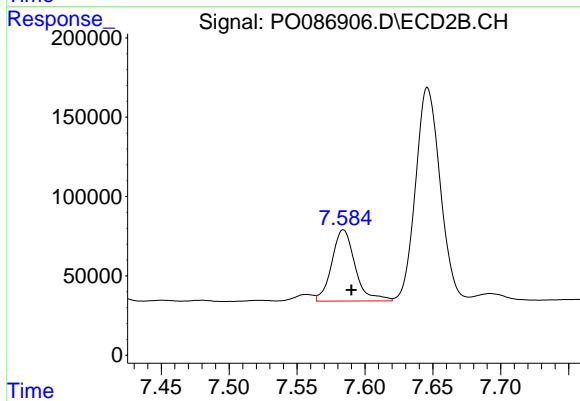
#37 AR-1262-2

R.T.: 7.299 min  
 Delta R.T.: -0.006 min  
 Response: 2077617  
 Conc: 691.84 ng/ml



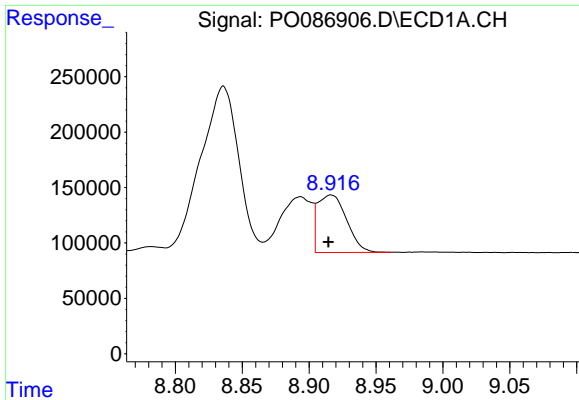
#38 AR-1262-3

R.T.: 8.836 min  
 Delta R.T.: 0.014 min  
 Response: 2984434  
 Conc: 757.93 ng/ml



#38 AR-1262-3

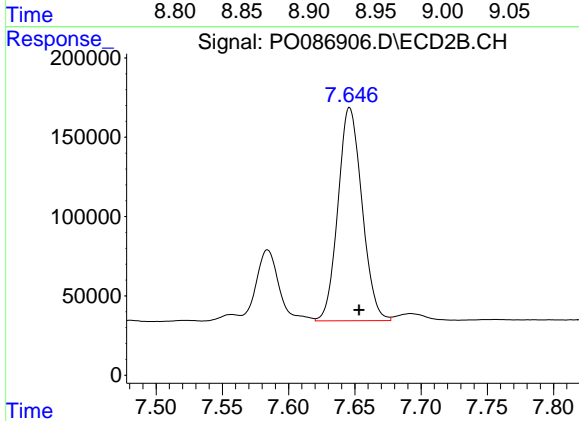
R.T.: 7.584 min  
 Delta R.T.: -0.006 min  
 Response: 537324  
 Conc: 448.18 ng/ml



#39 AR-1262-4

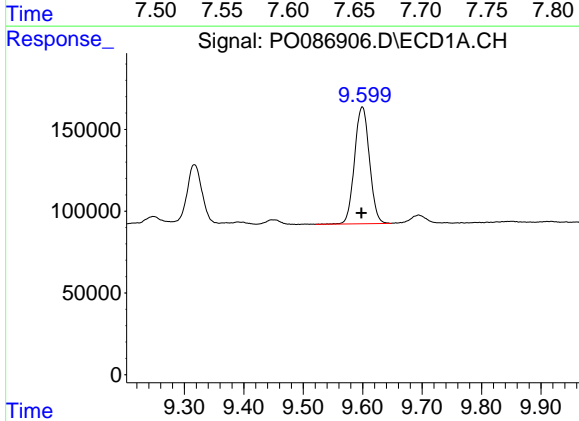
R.T.: 8.916 min  
 Delta R.T.: 0.002 min  
 Response: 781520  
 Conc: 260.95 ng/ml

Instrument :  
 ECD\_O  
 ClientSampleId :



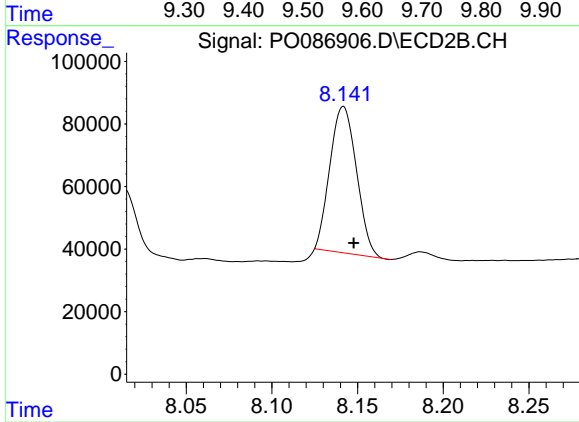
#39 AR-1262-4

R.T.: 7.646 min  
 Delta R.T.: -0.007 min  
 Response: 1693421  
 Conc: 774.78 ng/ml



#40 AR-1262-5

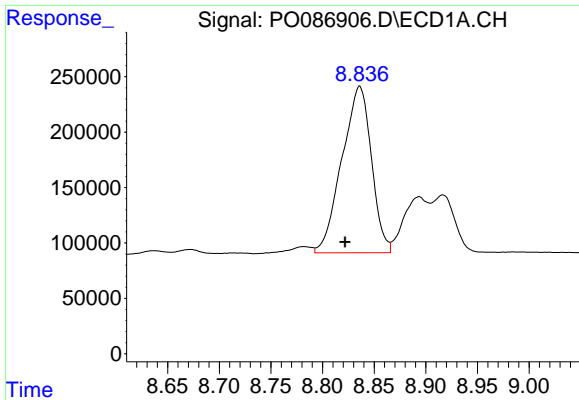
R.T.: 9.599 min  
 Delta R.T.: 0.001 min  
 Response: 1245507  
 Conc: 602.34 ng/ml



#40 AR-1262-5

R.T.: 8.142 min  
 Delta R.T.: -0.006 min  
 Response: 505849  
 Conc: 501.54 ng/ml



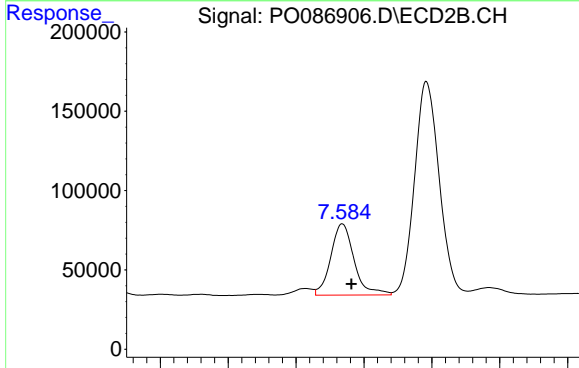


#41 AR-1268-1

R.T.: 8.836 min  
 Delta R.T.: 0.014 min  
 Response: 2984434  
 Conc: 424.89 ng/ml

Instrument :  
 ECD\_O  
 ClientSampleId :

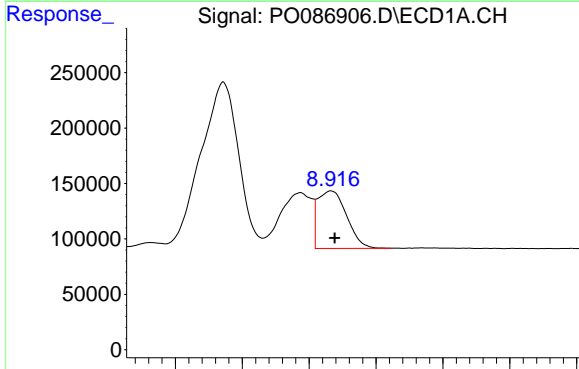
Time 8.65 8.70 8.75 8.80 8.85 8.90 8.95 9.00



#41 AR-1268-1

R.T.: 7.584 min  
 Delta R.T.: -0.007 min  
 Response: 537324  
 Conc: 156.80 ng/ml

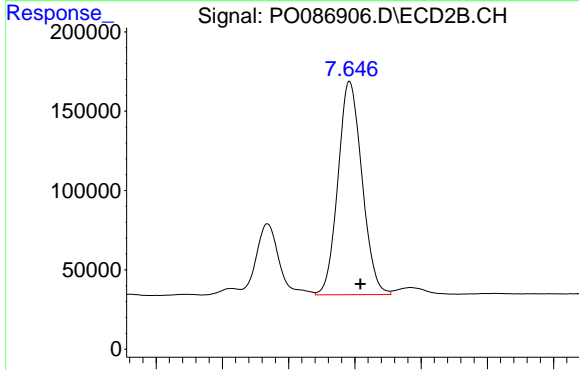
Time 7.45 7.50 7.55 7.60 7.65 7.70



#42 AR-1268-2

R.T.: 8.916 min  
 Delta R.T.: -0.003 min  
 Response: 781520  
 Conc: 122.06 ng/ml

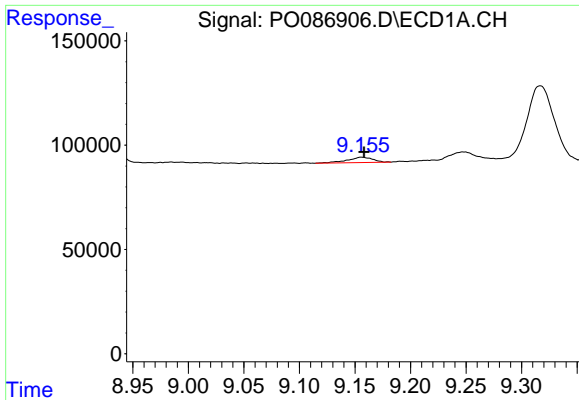
Time 8.80 8.85 8.90 8.95 9.00 9.05



#42 AR-1268-2

R.T.: 7.646 min  
 Delta R.T.: -0.008 min  
 Response: 1693421  
 Conc: 539.98 ng/ml

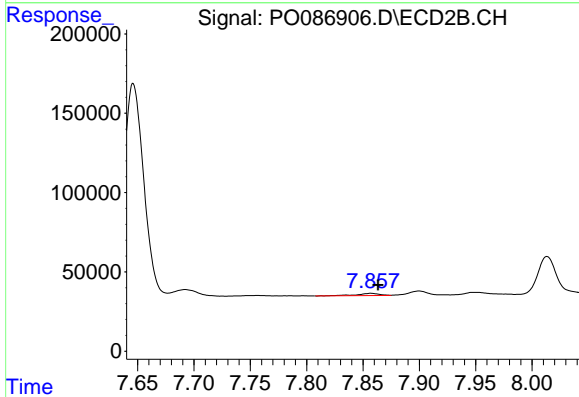
Time 7.50 7.55 7.60 7.65 7.70 7.75 7.80



#43 AR-1268-3

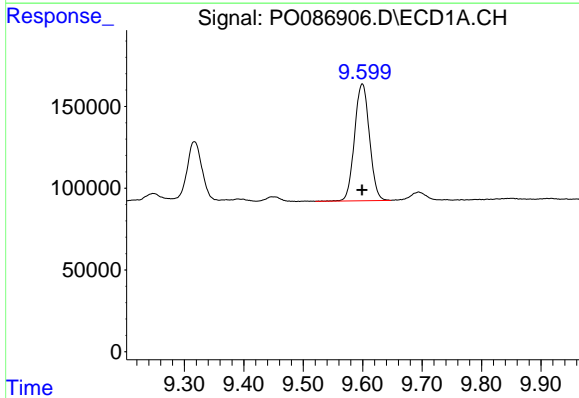
R.T.: 9.156 min  
 Delta R.T.: -0.002 min  
 Response: 40681  
 Conc: 7.48 ng/ml

Instrument :  
 ECD\_O  
 ClientSampleId :



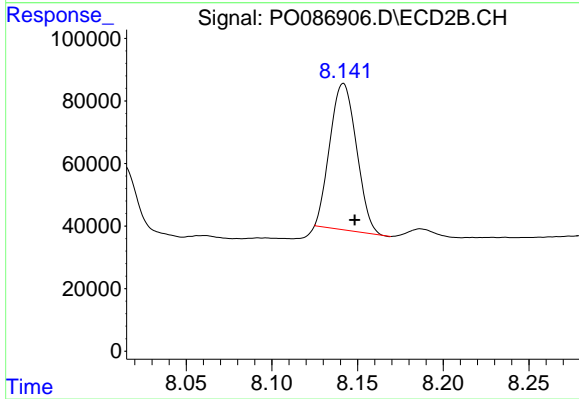
#43 AR-1268-3

R.T.: 7.857 min  
 Delta R.T.: -0.006 min  
 Response: 19495  
 Conc: 7.37 ng/ml



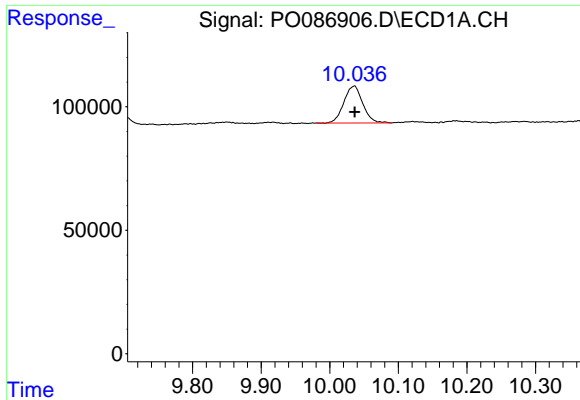
#44 AR-1268-4

R.T.: 9.599 min  
 Delta R.T.: 0.000 min  
 Response: 1245507  
 Conc: 527.43 ng/ml



#44 AR-1268-4

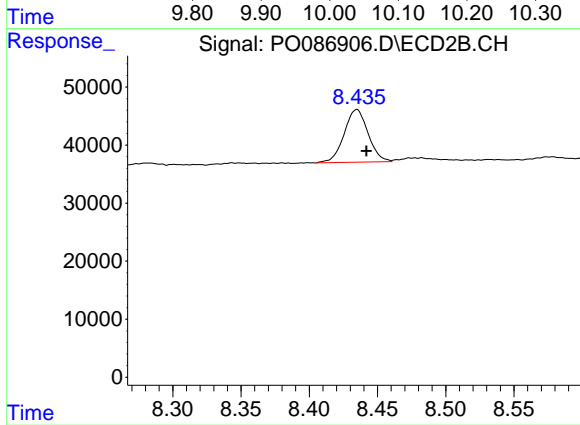
R.T.: 8.142 min  
 Delta R.T.: -0.007 min  
 Response: 505849  
 Conc: 442.83 ng/ml



#45 AR-1268-5

R.T.: 10.036 min  
Delta R.T.: 0.000 min  
Response: 285972  
Conc: 15.89 ng/ml

Instrument :  
ECD\_O  
ClientSampleId :



#45 AR-1268-5

R.T.: 8.435 min  
Delta R.T.: -0.007 min  
Response: 111385  
Conc: 12.75 ng/ml