

Data Path : Z:\pestpcbsrv\HPCHEM1\ECD_0\Data\P0060322\
 Data File : P0086908.D
 Signal(s) : Signal #1: ECD1A.CH Signal #2: ECD2B.CH
 Acq On : 03 Jun 2022 15:15
 Operator : YP\AJ
 Sample : N2986-06DL 4X
 Misc :
 ALS Vial : 50 Sample Multiplier: 1

Instrument :
 ECD_0
 ClientSampleId :

Integration File signal 1: autoint1.e
 Integration File signal 2: autoint2.e
 Quant Time: Jun 03 23:03:07 2022
 Quant Method : Z:\pestpcbsrv\HPCHEM1\ECD_0\methods\P0060122.M
 Quant Title : GC EXTRACTABLES
 QLast Update : Wed Jun 01 17:55:39 2022
 Response via : Initial Calibration
 Integrator: ChemStation 6890 Scale Mode: Small noise peaks clipped

Volume Inj. : 2 µl
 Signal #1 Phase : ZB-MR1 Signal #2 Phase: ZB-MR2
 Signal #1 Info : 30Mx0.32mmx 0.50µ Signal #2 Info : 30M x 0.32mm x 0.25µm

Compound	RT#1	RT#2	Resp#1	Resp#2	ng/ml	ng/ml
System Monitoring Compounds						
1) SA Tetrachlo...	4.528	3.669	369161	190648	6.455	5.964
2) SA Decachlor...	10.411	8.696	267017	103161	5.850	4.601
Target Compounds						
3) L1 AR-1016-1	5.649f	0.000	4278	0	2.154	N.D. #
7) L1 AR-1016-5	0.000	5.226	0	5954	N.D.	8.178 #
8) L2 AR-1221-1	4.740	0.000	13163	0	19.813	N.D. #
9) L2 AR-1221-2	4.835	0.000	406	0	0.775	N.D. #
10) L2 AR-1221-3	4.835f	0.000	406	0	0.252	N.D. #
11) L3 AR-1232-1	4.835f	0.000	406	0	0.266	N.D. #
15) L3 AR-1232-5	0.000	5.226	0	5954	N.D.	18.020 #
16) L4 AR-1242-1	5.649f	0.000	4278	0	2.676	N.D. #
20) L4 AR-1242-5	6.623	5.568	5431	46431	4.619	69.136 #
21) L5 AR-1248-1	5.649f	0.000	4278	0	3.508	N.D. #
24) L5 AR-1248-4	6.577	5.226	225126	5954	104.817	6.121 #
25) L5 AR-1248-5	6.631	5.592	6290	37798	3.069	40.661 #
26) L6 AR-1254-1	6.577	5.568	225126	46431	101.319	32.285 #
27) L6 AR-1254-2	6.795	5.714	215603	96252	62.929	77.689
28) L6 AR-1254-3	7.166	6.101	118475	61787	33.911	30.759
29) L6 AR-1254-4	7.451	6.347	99710	23305	38.872	18.885 #
30) L6 AR-1254-5	7.874	6.764	1929335	857784	697.536	495.222 #
31) L7 AR-1260-1	7.330	6.250	1147805	568437	462.489	438.953
32) L7 AR-1260-2	7.589	6.437	1635037	779244	482.285	504.501
33) L7 AR-1260-3	7.951	6.591	1255010	524471	580.816	301.790 #
34) L7 AR-1260-4	8.181	7.064	1145990	461317	445.971	405.307
35) L7 AR-1260-5	8.510	7.304	1800502	940424	378.902	354.101
36) L8 AR-1262-1	7.951	6.804	1255010	630745	377.867	364.769
37) L8 AR-1262-2	8.510	7.304	1800502	940424	314.682	313.158
38) L8 AR-1262-3	8.849	7.589	1381016	242330	350.726	202.127 #
39) L8 AR-1262-4	8.907	7.649	391002	741753	130.558	339.370 #
40) L8 AR-1262-5	9.616	8.146	510579	220383	246.923	218.504
41) L9 AR-1268-1	8.795	7.589	28474	242330	4.054	70.714 #
42) L9 AR-1268-2	8.931	7.649	331169	741753	51.723	236.523 #
43) L9 AR-1268-3	9.170	7.861	14460	8443	2.658	3.190
44) L9 AR-1268-4	9.616	8.146	510579	220383	216.213	192.926
45) L9 AR-1268-5	10.051	8.439	117912	40868	6.553	4.679 #

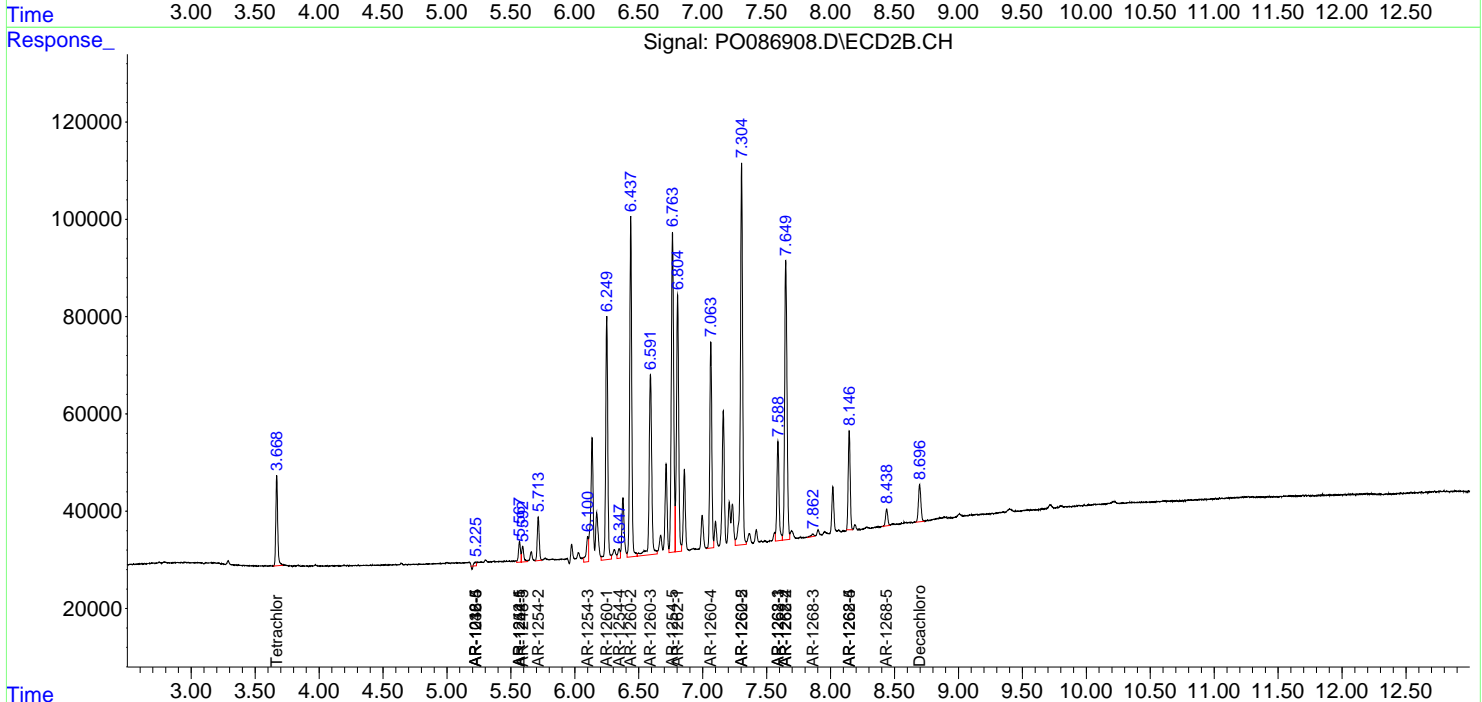
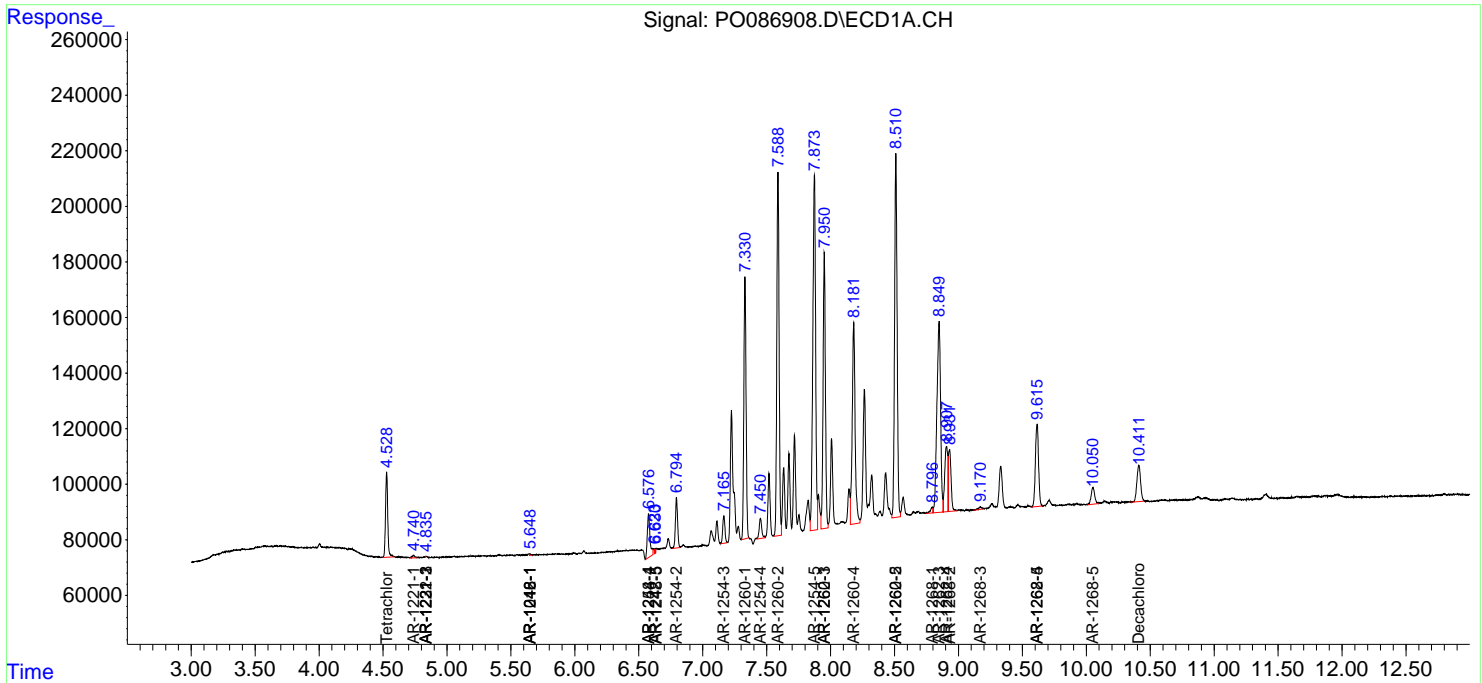
(f)=RT Delta > 1/2 Window (#)=Amounts differ by > 25% (m)=manual int.

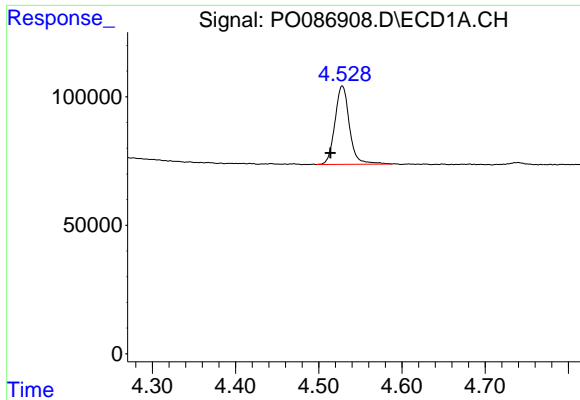
Data Path : Z:\pestpcbsrv\HPCHEM1\ECD_O\Data\P0060322\
 Data File : P0086908.D
 Signal(s) : Signal #1: ECD1A.CH Signal #2: ECD2B.CH
 Acq On : 03 Jun 2022 15:15
 Operator : YP\AJ
 Sample : N2986-06DL 4X
 Misc :
 ALS Vial : 50 Sample Multiplier: 1

Instrument :
 ECD_O
 ClientSampleId :

Integration File signal 1: autoint1.e
 Integration File signal 2: autoint2.e
 Quant Time: Jun 03 23:03:07 2022
 Quant Method : Z:\pestpcbsrv\HPCHEM1\ECD_O\methods\P0060122.M
 Quant Title : GC EXTRACTABLES
 QLast Update : Wed Jun 01 17:55:39 2022
 Response via : Initial Calibration
 Integrator: ChemStation 6890 Scale Mode: Small noise peaks clipped

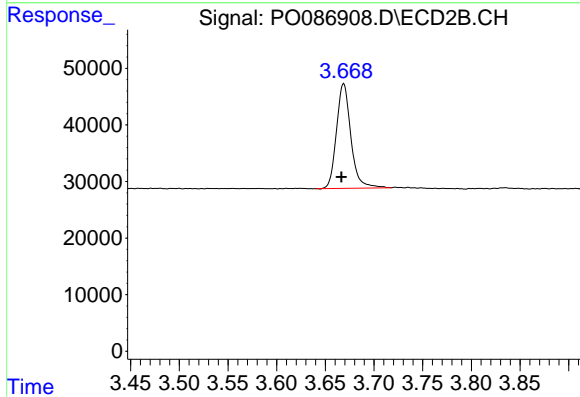
Volume Inj. : 2 µl
 Signal #1 Phase : ZB-MR1 Signal #2 Phase: ZB-MR2
 Signal #1 Info : 30Mx0.32mmx 0.50µ Signal #2 Info : 30M x 0.32mm x 0.25µm



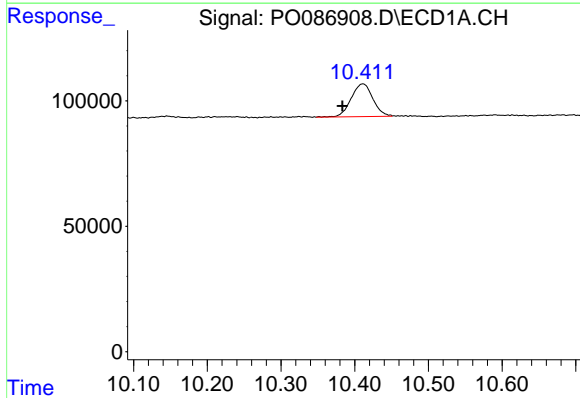


#1 Tetrachloro-m-xylene
 R.T.: 4.528 min
 Delta R.T.: 0.014 min
 Response: 369161
 Conc: 6.45 ng/ml

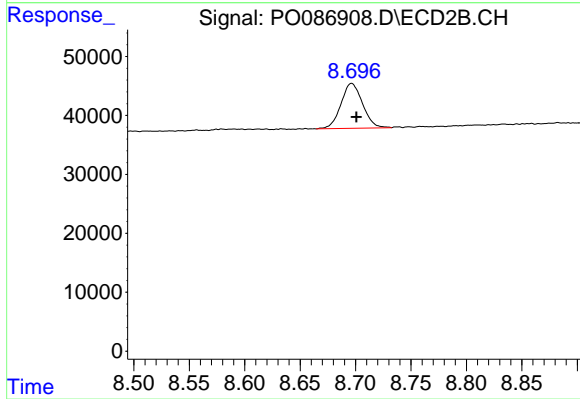
Instrument :
 ECD_O
 ClientSampleId :



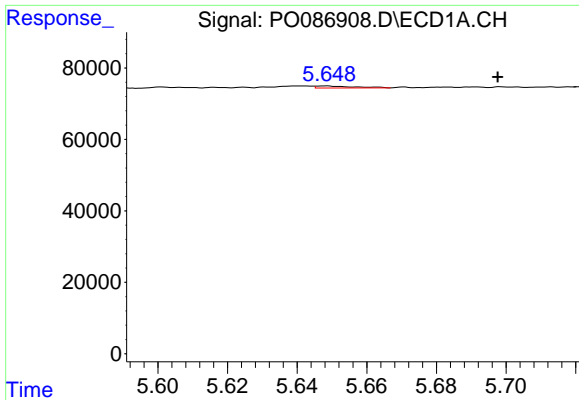
#1 Tetrachloro-m-xylene
 R.T.: 3.669 min
 Delta R.T.: 0.002 min
 Response: 190648
 Conc: 5.96 ng/ml



#2 Decachlorobiphenyl
 R.T.: 10.411 min
 Delta R.T.: 0.028 min
 Response: 267017
 Conc: 5.85 ng/ml



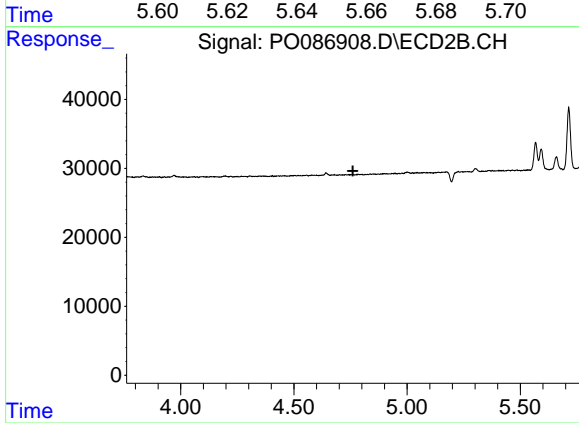
#2 Decachlorobiphenyl
 R.T.: 8.696 min
 Delta R.T.: -0.004 min
 Response: 103161
 Conc: 4.60 ng/ml



#3 AR-1016-1

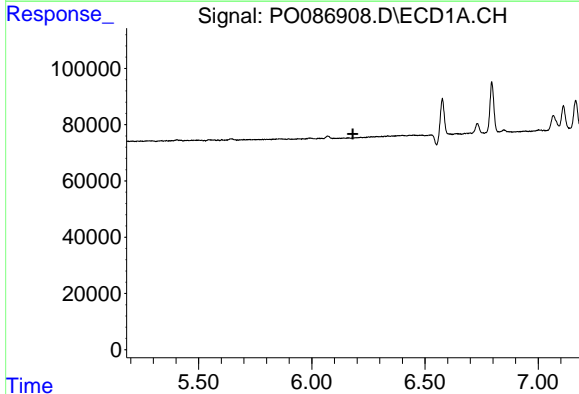
R.T.: 5.649 min
 Delta R.T.: -0.049 min
 Response: 4278
 Conc: 2.15 ng/ml

Instrument :
 ECD_O
 ClientSampleId :



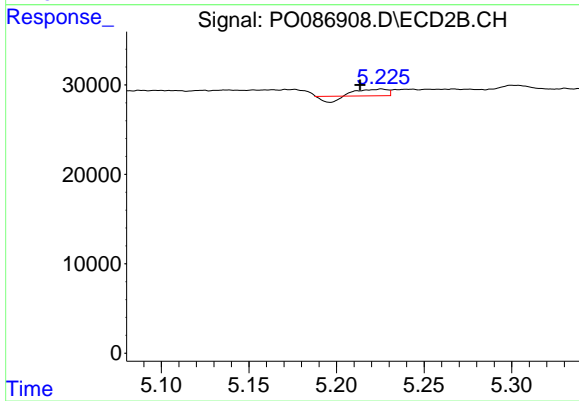
#3 AR-1016-1

R.T.: 0.000 min
 Exp R.T. : 4.761 min
 Response: 0
 Conc: N.D.



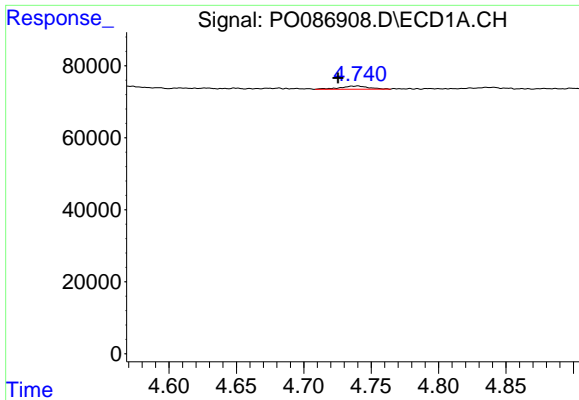
#7 AR-1016-5

R.T.: 0.000 min
 Exp R.T. : 6.182 min
 Response: 0
 Conc: N.D.



#7 AR-1016-5

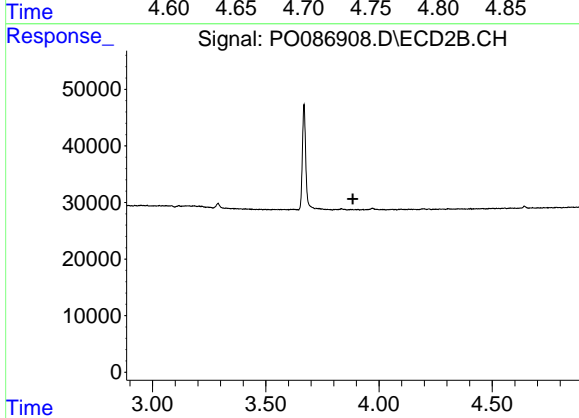
R.T.: 5.226 min
 Delta R.T.: 0.012 min
 Response: 5954
 Conc: 8.18 ng/ml



#8 AR-1221-1

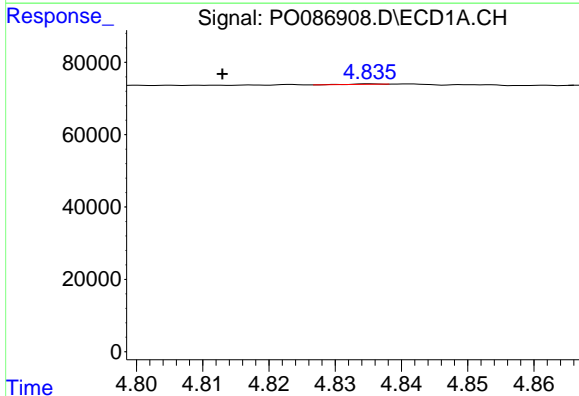
R.T.: 4.740 min
 Delta R.T.: 0.015 min
 Response: 13163
 Conc: 19.81 ng/ml

Instrument :
 ECD_O
 ClientSampleId :



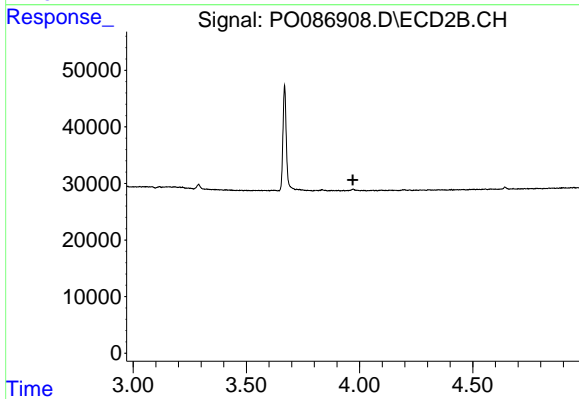
#8 AR-1221-1

R.T.: 0.000 min
 Exp R.T. : 3.885 min
 Response: 0
 Conc: N.D.



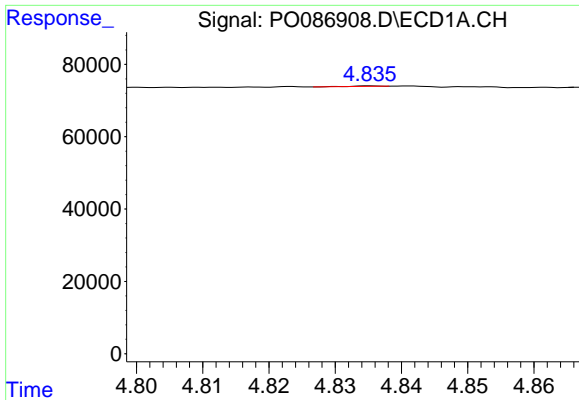
#9 AR-1221-2

R.T.: 4.835 min
 Delta R.T.: 0.022 min
 Response: 406
 Conc: 0.77 ng/ml



#9 AR-1221-2

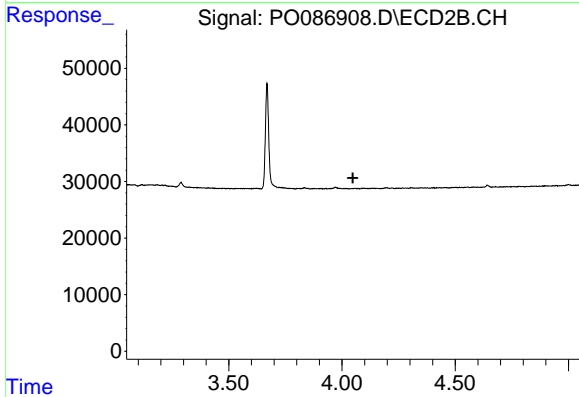
R.T.: 0.000 min
 Exp R.T. : 3.971 min
 Response: 0
 Conc: N.D.



#10 AR-1221-3

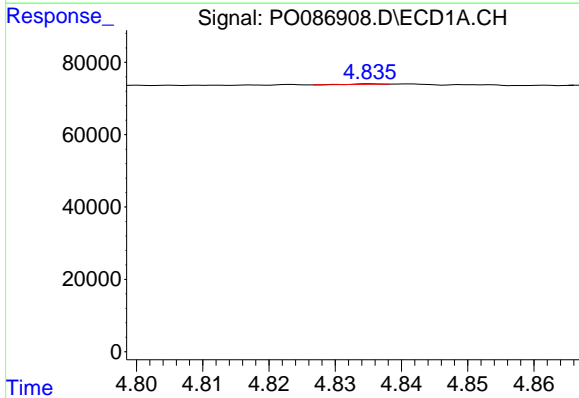
R.T.: 4.835 min
 Delta R.T.: -0.056 min
 Response: 406
 Conc: 0.25 ng/ml

Instrument :
 ECD_O
 ClientSampleId :



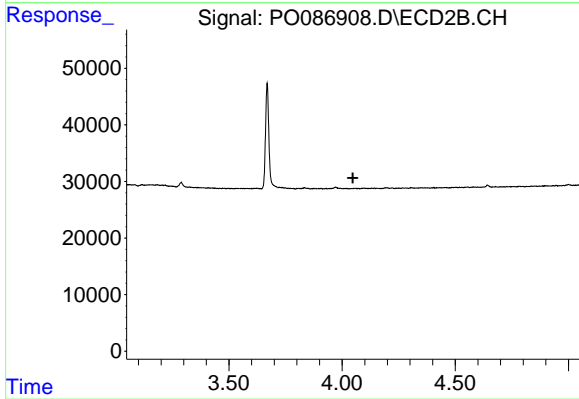
#10 AR-1221-3

R.T.: 0.000 min
 Exp R.T. : 4.048 min
 Response: 0
 Conc: N.D.



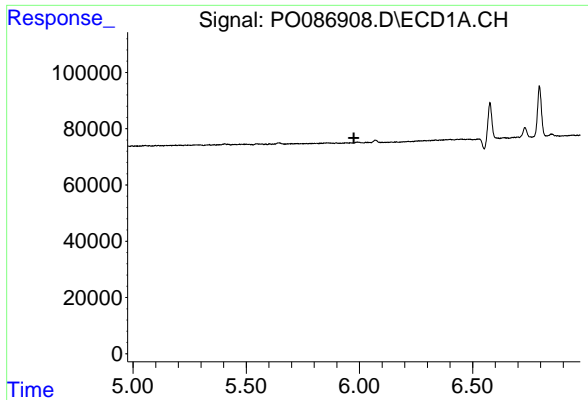
#11 AR-1232-1

R.T.: 4.835 min
 Delta R.T.: -0.056 min
 Response: 406
 Conc: 0.27 ng/ml



#11 AR-1232-1

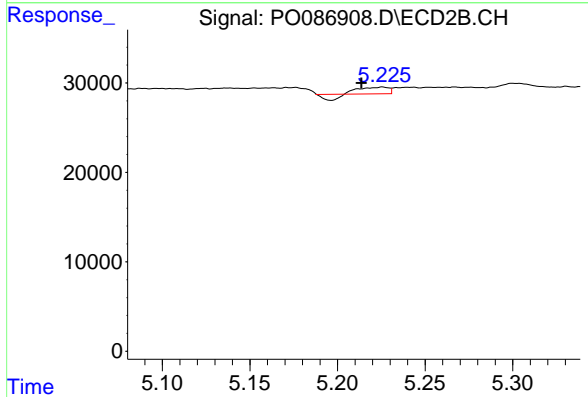
R.T.: 0.000 min
 Exp R.T. : 4.048 min
 Response: 0
 Conc: N.D.



#15 AR-1232-5

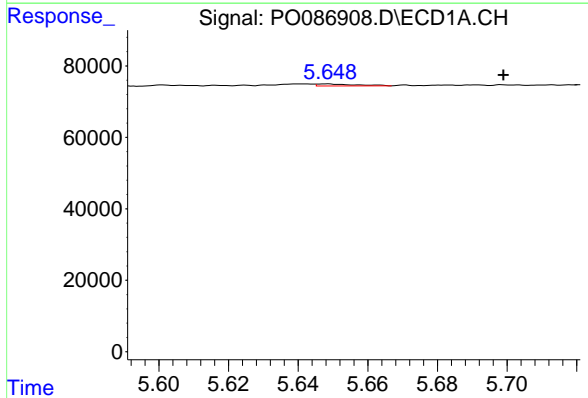
R.T.: 0.000 min
 Exp R.T.: 5.975 min
 Response: 0
 Conc: N.D.

Instrument :
 ECD_O
 ClientSampleId :



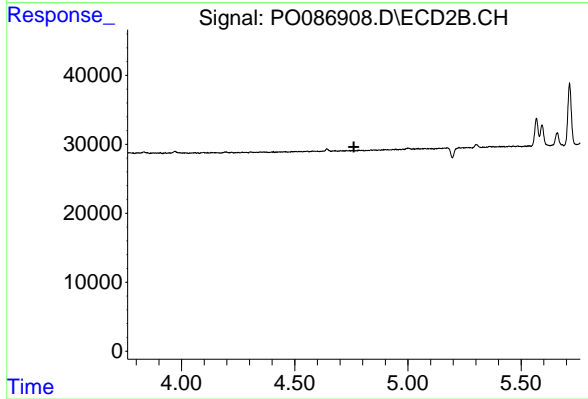
#15 AR-1232-5

R.T.: 5.226 min
 Delta R.T.: 0.012 min
 Response: 5954
 Conc: 18.02 ng/ml



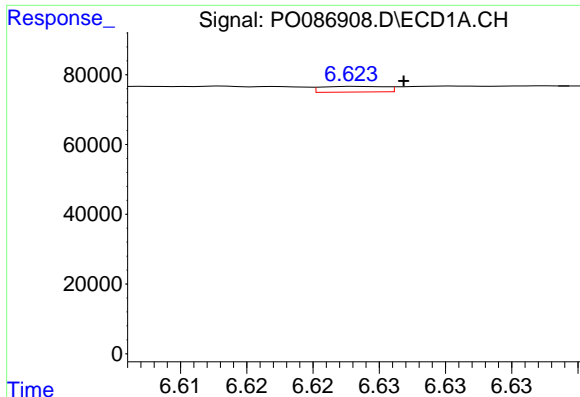
#16 AR-1242-1

R.T.: 5.649 min
 Delta R.T.: -0.050 min
 Response: 4278
 Conc: 2.68 ng/ml



#16 AR-1242-1

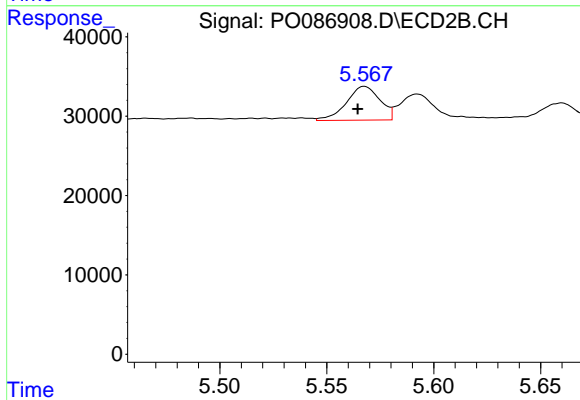
R.T.: 0.000 min
 Exp R.T.: 4.761 min
 Response: 0
 Conc: N.D.



#20 AR-1242-5

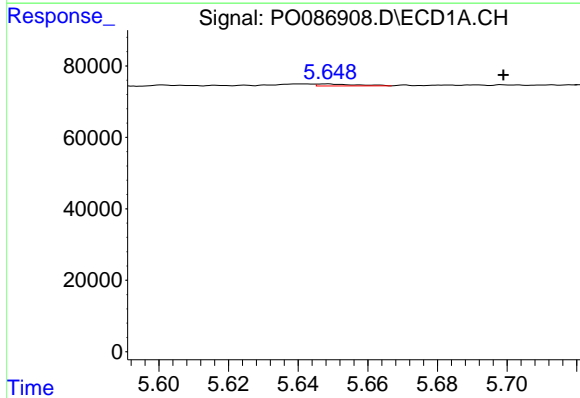
R.T.: 6.623 min
 Delta R.T.: -0.003 min
 Response: 5431
 Conc: 4.62 ng/ml

Instrument :
 ECD_O
 ClientSampleId :



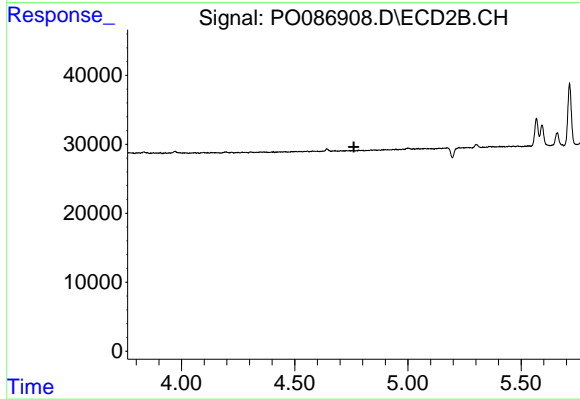
#20 AR-1242-5

R.T.: 5.568 min
 Delta R.T.: 0.003 min
 Response: 46431
 Conc: 69.14 ng/ml



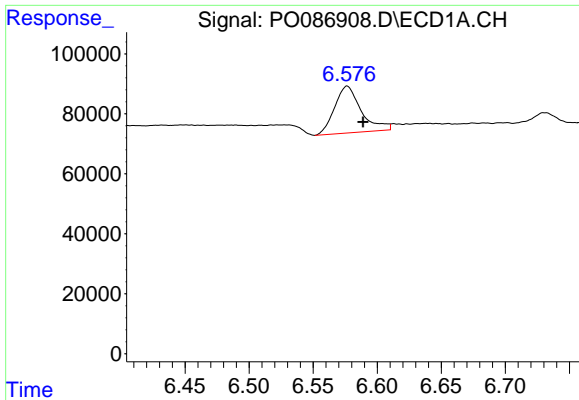
#21 AR-1248-1

R.T.: 5.649 min
 Delta R.T.: -0.050 min
 Response: 4278
 Conc: 3.51 ng/ml



#21 AR-1248-1

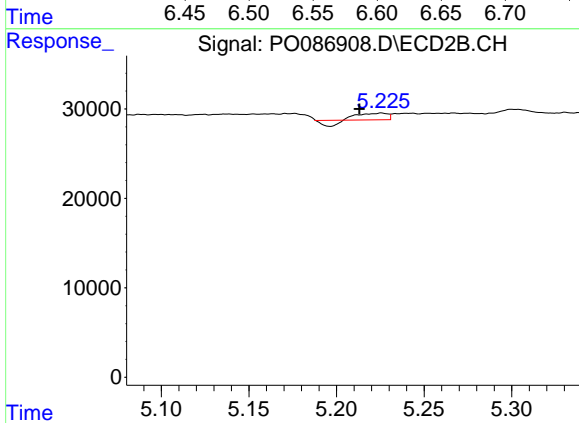
R.T.: 0.000 min
 Exp R.T. : 4.761 min
 Response: 0
 Conc: N.D.



#24 AR-1248-4

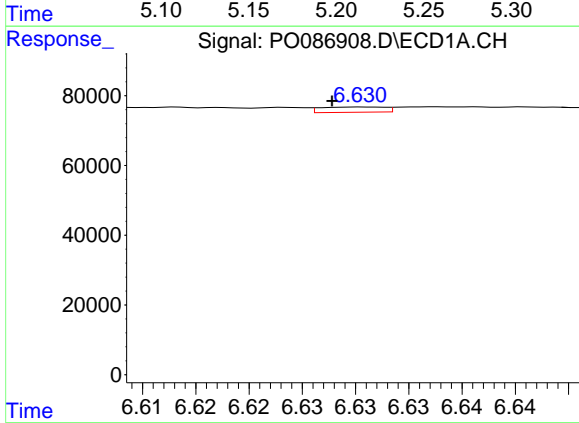
R.T.: 6.577 min
 Delta R.T.: -0.012 min
 Response: 225126
 Conc: 104.82 ng/ml

Instrument :
 ECD_O
 ClientSampleId :



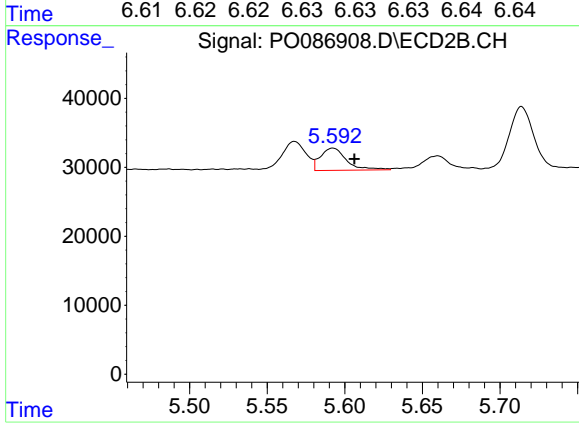
#24 AR-1248-4

R.T.: 5.226 min
 Delta R.T.: 0.013 min
 Response: 5954
 Conc: 6.12 ng/ml



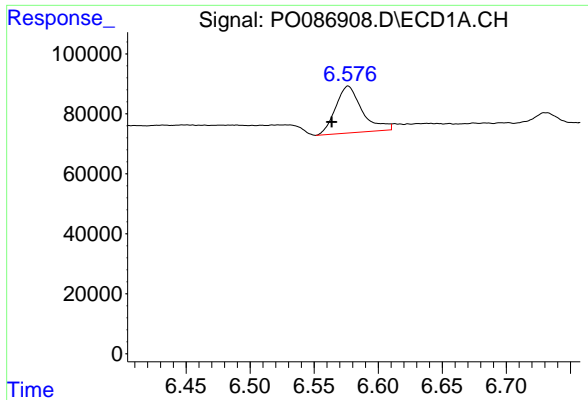
#25 AR-1248-5

R.T.: 6.631 min
 Delta R.T.: 0.003 min
 Response: 6290
 Conc: 3.07 ng/ml



#25 AR-1248-5

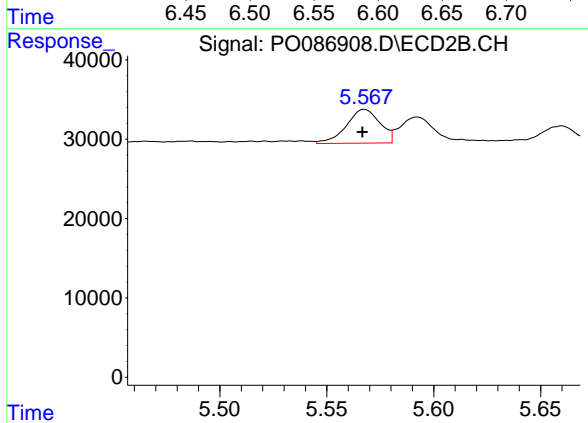
R.T.: 5.592 min
 Delta R.T.: -0.014 min
 Response: 37798
 Conc: 40.66 ng/ml



#26 AR-1254-1

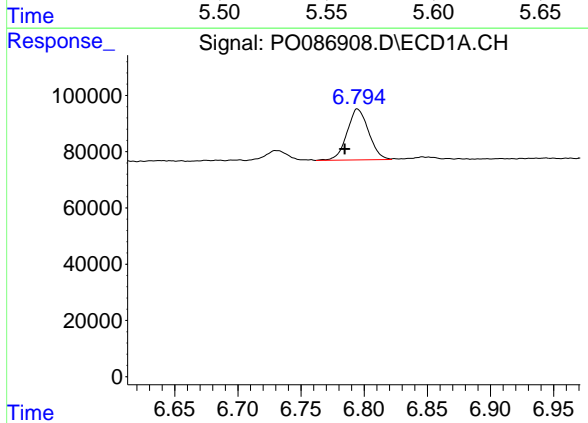
R.T.: 6.577 min
 Delta R.T.: 0.013 min
 Response: 225126
 Conc: 101.32 ng/ml

Instrument :
 ECD_O
 ClientSampleId :



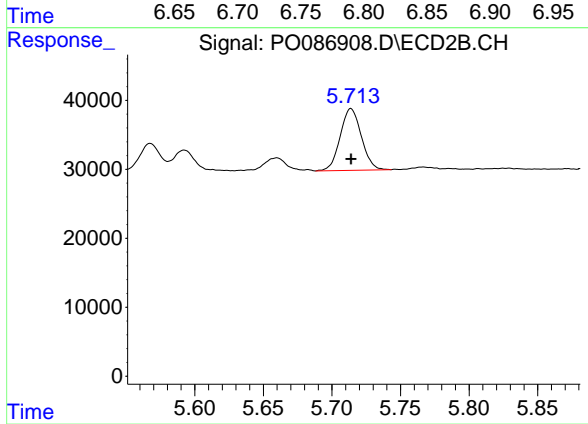
#26 AR-1254-1

R.T.: 5.568 min
 Delta R.T.: 0.000 min
 Response: 46431
 Conc: 32.28 ng/ml



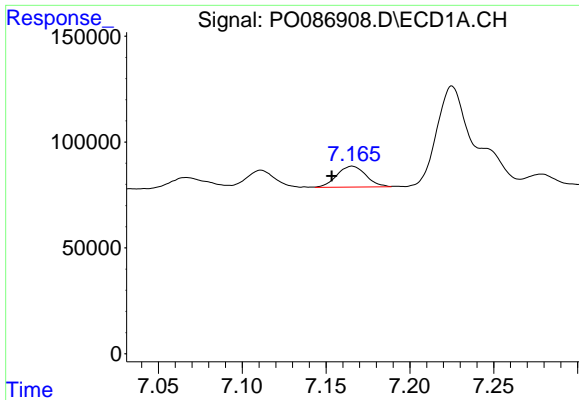
#27 AR-1254-2

R.T.: 6.795 min
 Delta R.T.: 0.010 min
 Response: 215603
 Conc: 62.93 ng/ml



#27 AR-1254-2

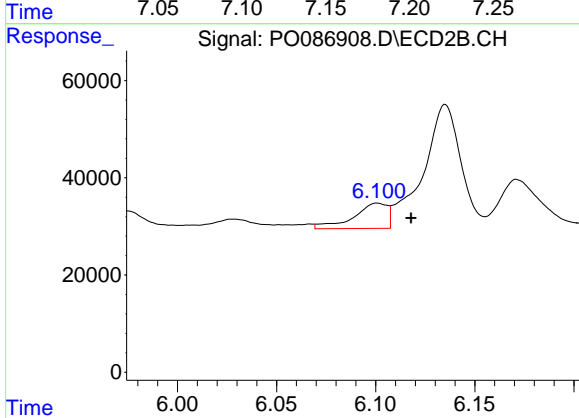
R.T.: 5.714 min
 Delta R.T.: 0.000 min
 Response: 96252
 Conc: 77.69 ng/ml



#28 AR-1254-3

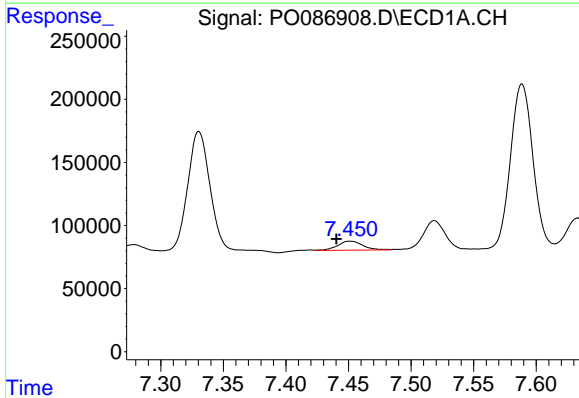
R.T.: 7.166 min
 Delta R.T.: 0.012 min
 Response: 118475
 Conc: 33.91 ng/ml

Instrument :
 ECD_O
 ClientSampleId :



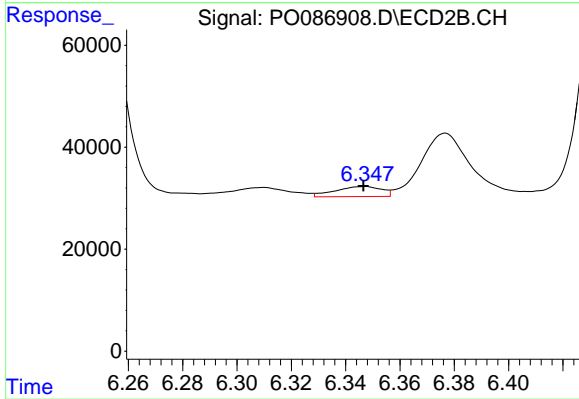
#28 AR-1254-3

R.T.: 6.101 min
 Delta R.T.: -0.017 min
 Response: 61787
 Conc: 30.76 ng/ml



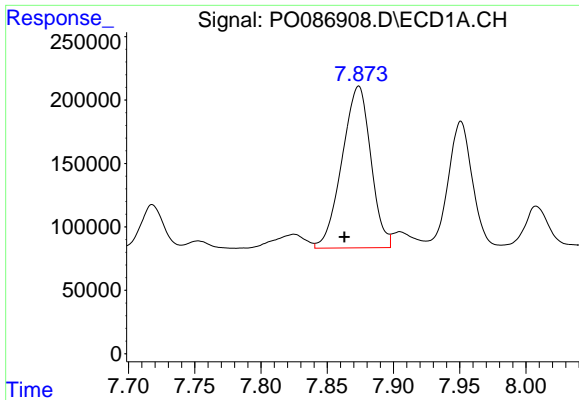
#29 AR-1254-4

R.T.: 7.451 min
 Delta R.T.: 0.010 min
 Response: 99710
 Conc: 38.87 ng/ml



#29 AR-1254-4

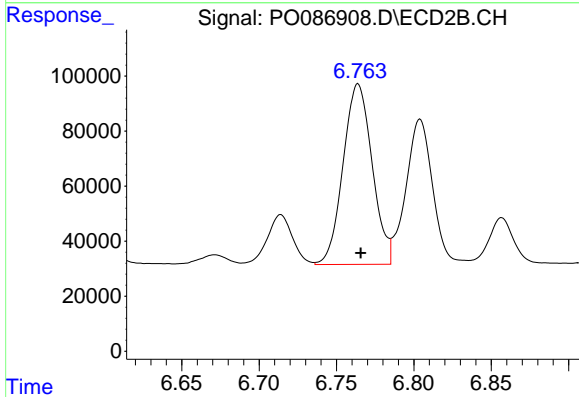
R.T.: 6.347 min
 Delta R.T.: 0.000 min
 Response: 23305
 Conc: 18.89 ng/ml



#30 AR-1254-5

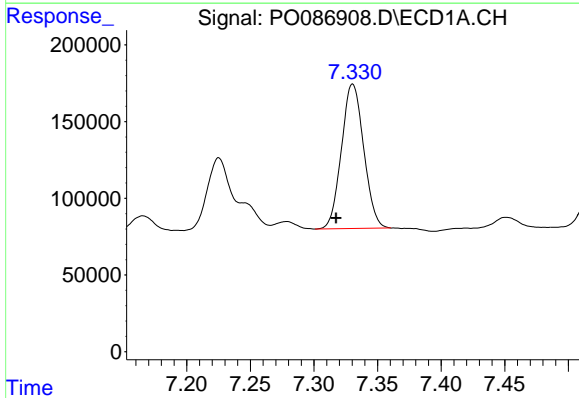
R.T.: 7.874 min
 Delta R.T.: 0.011 min
 Response: 1929335
 Conc: 697.54 ng/ml

Instrument :
 ECD_O
 ClientSampleId :



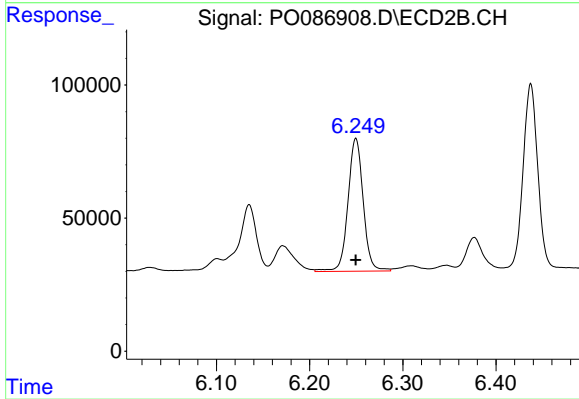
#30 AR-1254-5

R.T.: 6.764 min
 Delta R.T.: -0.002 min
 Response: 857784
 Conc: 495.22 ng/ml



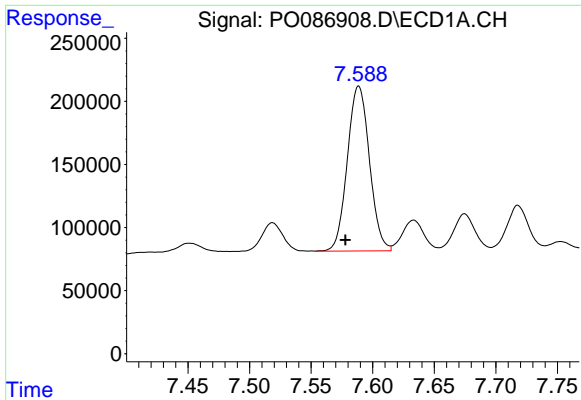
#31 AR-1260-1

R.T.: 7.330 min
 Delta R.T.: 0.013 min
 Response: 1147805
 Conc: 462.49 ng/ml



#31 AR-1260-1

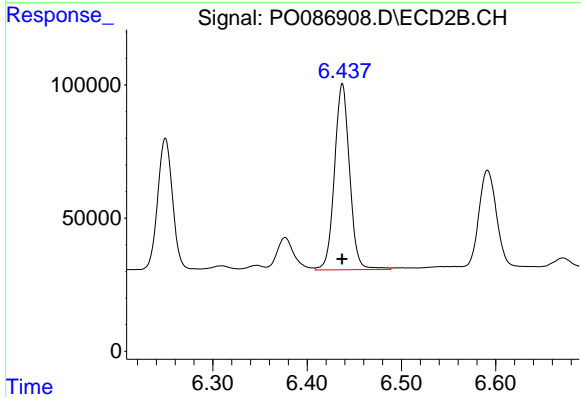
R.T.: 6.250 min
 Delta R.T.: 0.000 min
 Response: 568437
 Conc: 438.95 ng/ml



#32 AR-1260-2

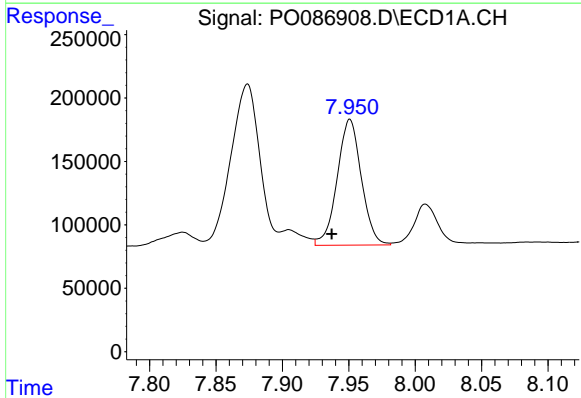
R.T.: 7.589 min
 Delta R.T.: 0.011 min
 Response: 1635037
 Conc: 482.29 ng/ml

Instrument :
 ECD_O
 ClientSampleId :



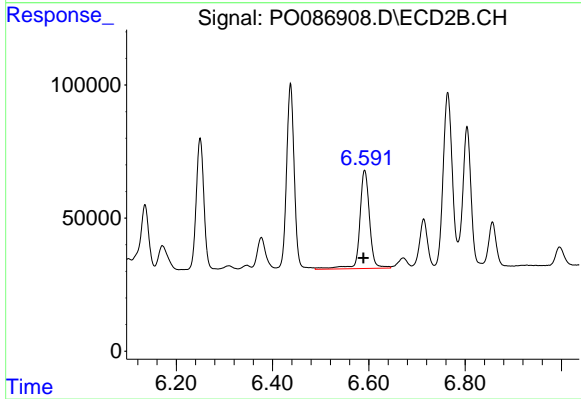
#32 AR-1260-2

R.T.: 6.437 min
 Delta R.T.: 0.000 min
 Response: 779244
 Conc: 504.50 ng/ml



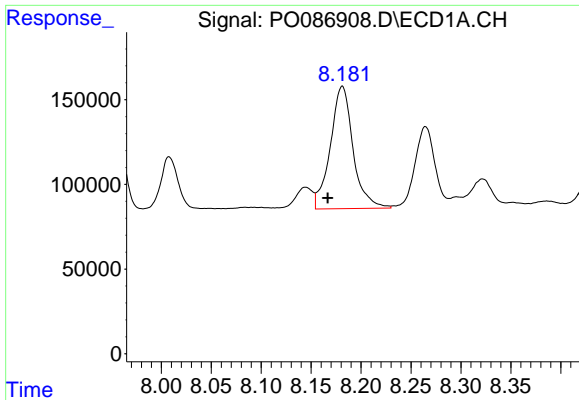
#33 AR-1260-3

R.T.: 7.951 min
 Delta R.T.: 0.014 min
 Response: 1255010
 Conc: 580.82 ng/ml



#33 AR-1260-3

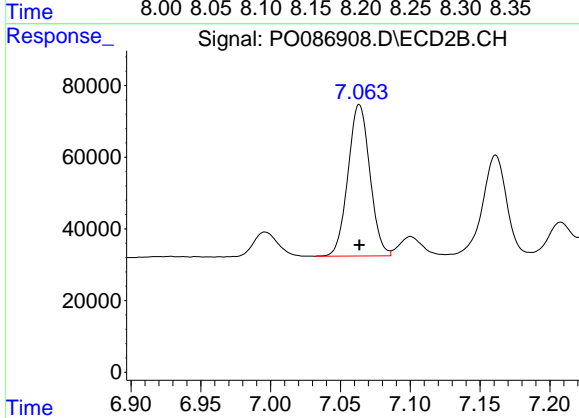
R.T.: 6.591 min
 Delta R.T.: 0.003 min
 Response: 524471
 Conc: 301.79 ng/ml



#34 AR-1260-4

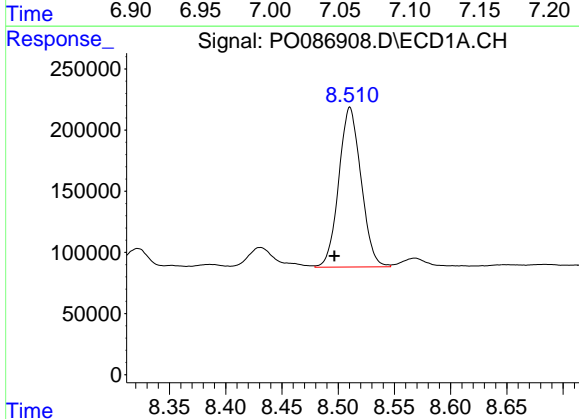
R.T.: 8.181 min
 Delta R.T.: 0.015 min
 Response: 1145990
 Conc: 445.97 ng/ml

Instrument :
 ECD_O
 ClientSampleId :



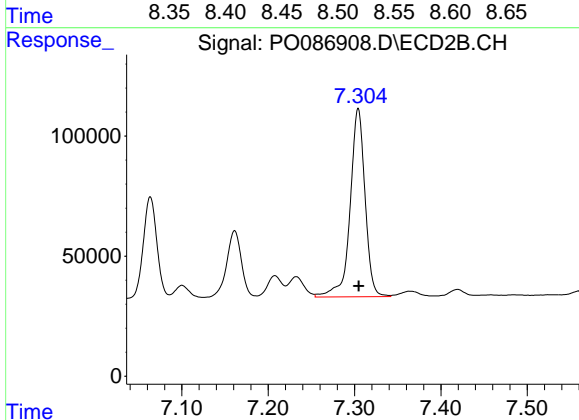
#34 AR-1260-4

R.T.: 7.064 min
 Delta R.T.: 0.000 min
 Response: 461317
 Conc: 405.31 ng/ml



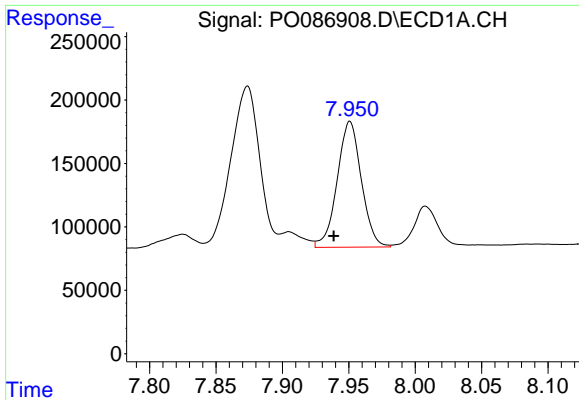
#35 AR-1260-5

R.T.: 8.510 min
 Delta R.T.: 0.014 min
 Response: 1800502
 Conc: 378.90 ng/ml



#35 AR-1260-5

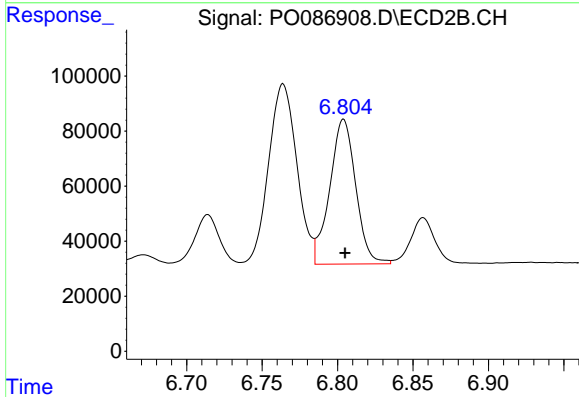
R.T.: 7.304 min
 Delta R.T.: 0.000 min
 Response: 940424
 Conc: 354.10 ng/ml



#36 AR-1262-1

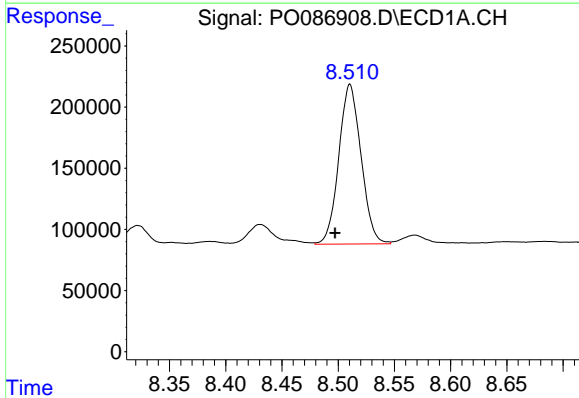
R.T.: 7.951 min
 Delta R.T.: 0.012 min
 Response: 1255010
 Conc: 377.87 ng/ml

Instrument :
 ECD_O
 ClientSampleId :



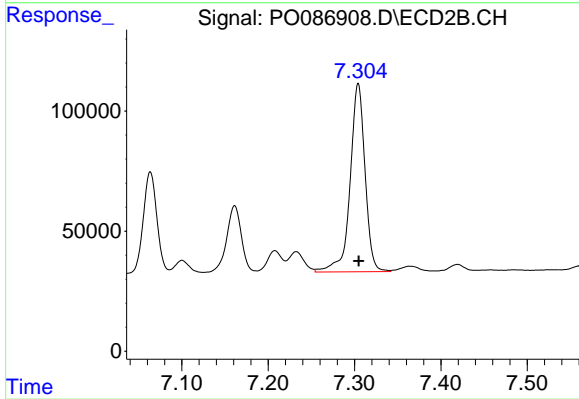
#36 AR-1262-1

R.T.: 6.804 min
 Delta R.T.: 0.000 min
 Response: 630745
 Conc: 364.77 ng/ml



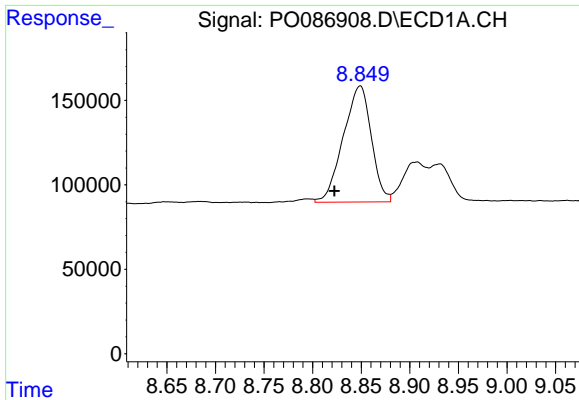
#37 AR-1262-2

R.T.: 8.510 min
 Delta R.T.: 0.013 min
 Response: 1800502
 Conc: 314.68 ng/ml



#37 AR-1262-2

R.T.: 7.304 min
 Delta R.T.: 0.000 min
 Response: 940424
 Conc: 313.16 ng/ml

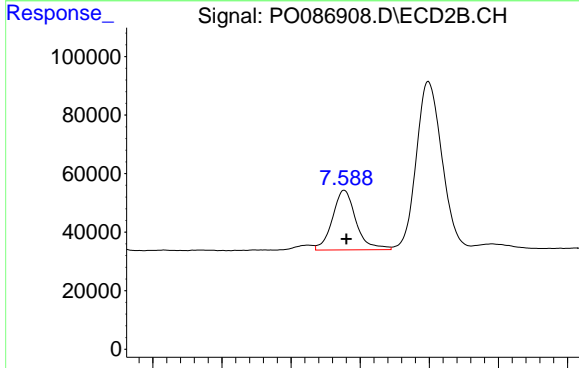


#38 AR-1262-3

R.T.: 8.849 min
 Delta R.T.: 0.027 min
 Response: 1381016
 Conc: 350.73 ng/ml

Instrument :
 ECD_O
 ClientSampleId :

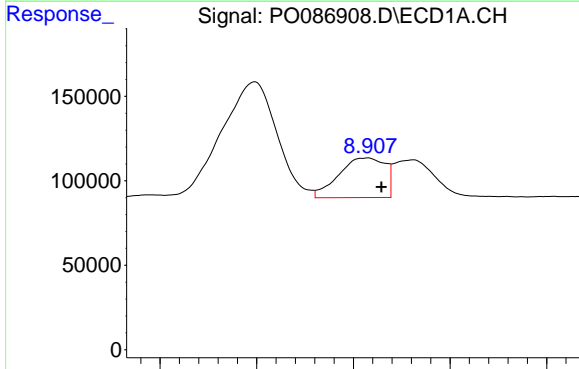
Time 8.65 8.70 8.75 8.80 8.85 8.90 8.95 9.00 9.05



#38 AR-1262-3

R.T.: 7.589 min
 Delta R.T.: -0.002 min
 Response: 242330
 Conc: 202.13 ng/ml

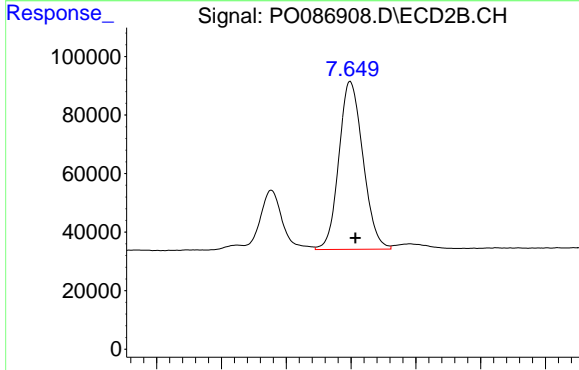
Time 7.45 7.50 7.55 7.60 7.65 7.70



#39 AR-1262-4

R.T.: 8.907 min
 Delta R.T.: -0.007 min
 Response: 391002
 Conc: 130.56 ng/ml

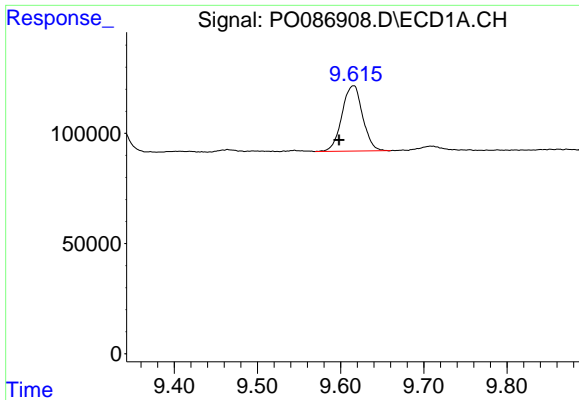
Time 8.80 8.85 8.90 8.95 9.00



#39 AR-1262-4

R.T.: 7.649 min
 Delta R.T.: -0.004 min
 Response: 741753
 Conc: 339.37 ng/ml

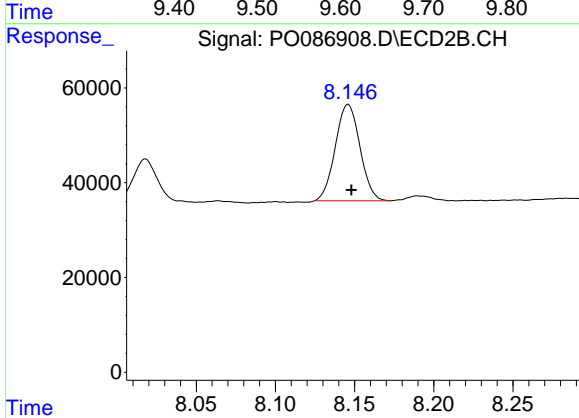
Time 7.50 7.55 7.60 7.65 7.70 7.75 7.80



#40 AR-1262-5

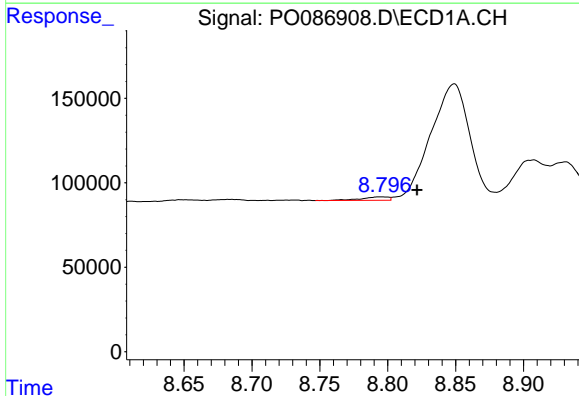
R.T.: 9.616 min
 Delta R.T.: 0.018 min
 Response: 510579
 Conc: 246.92 ng/ml

Instrument :
 ECD_O
 ClientSampleId :



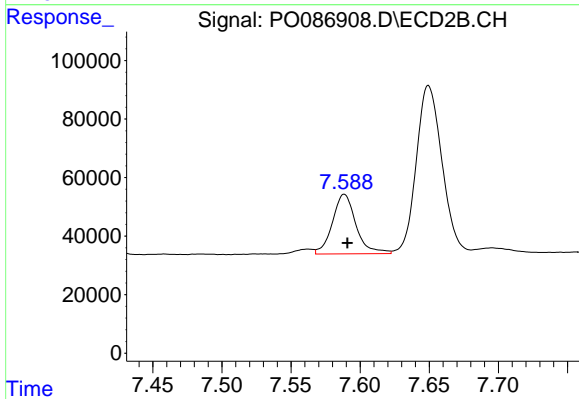
#40 AR-1262-5

R.T.: 8.146 min
 Delta R.T.: -0.002 min
 Response: 220383
 Conc: 218.50 ng/ml



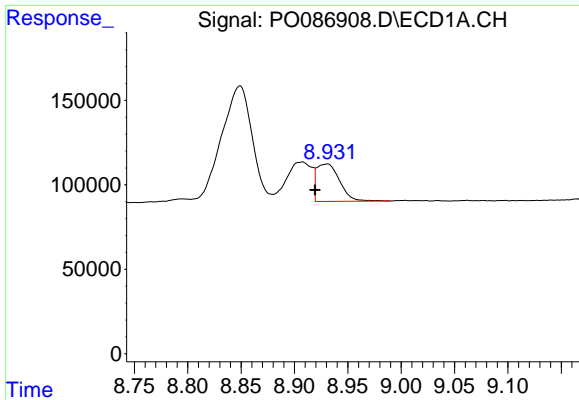
#41 AR-1268-1

R.T.: 8.795 min
 Delta R.T.: -0.027 min
 Response: 28474
 Conc: 4.05 ng/ml



#41 AR-1268-1

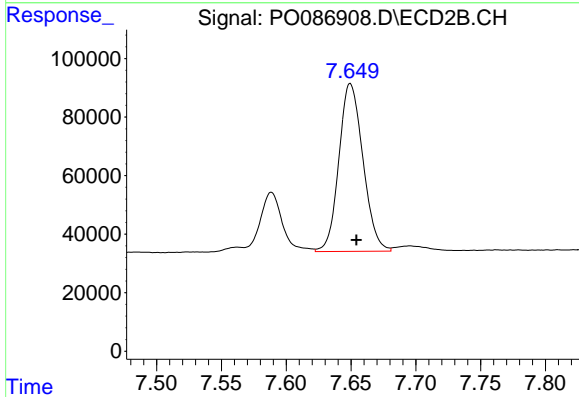
R.T.: 7.589 min
 Delta R.T.: -0.002 min
 Response: 242330
 Conc: 70.71 ng/ml



#42 AR-1268-2

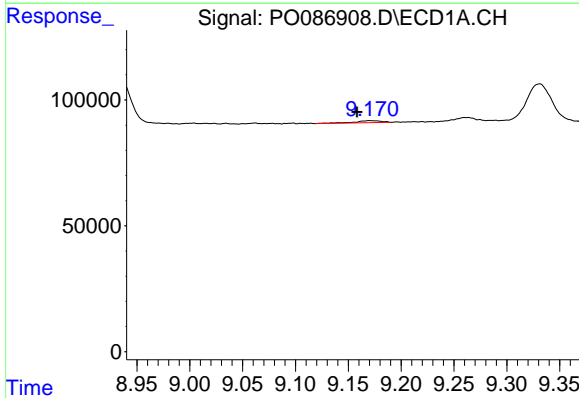
R.T.: 8.931 min
 Delta R.T.: 0.012 min
 Response: 331169
 Conc: 51.72 ng/ml

Instrument :
 ECD_O
 ClientSampleId :



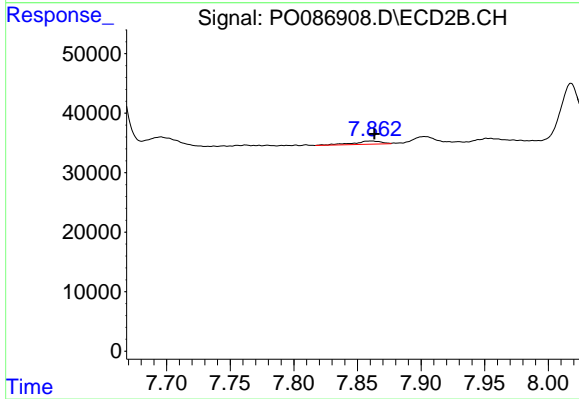
#42 AR-1268-2

R.T.: 7.649 min
 Delta R.T.: -0.005 min
 Response: 741753
 Conc: 236.52 ng/ml



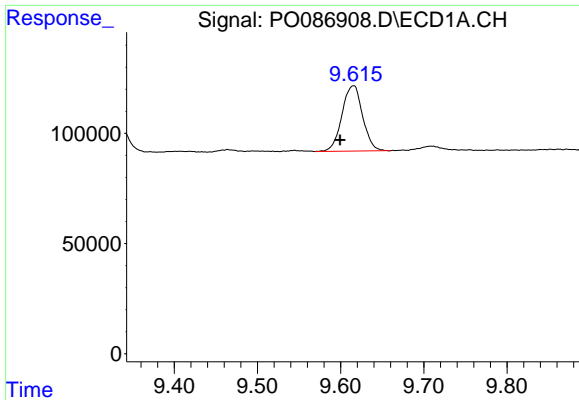
#43 AR-1268-3

R.T.: 9.170 min
 Delta R.T.: 0.012 min
 Response: 14460
 Conc: 2.66 ng/ml



#43 AR-1268-3

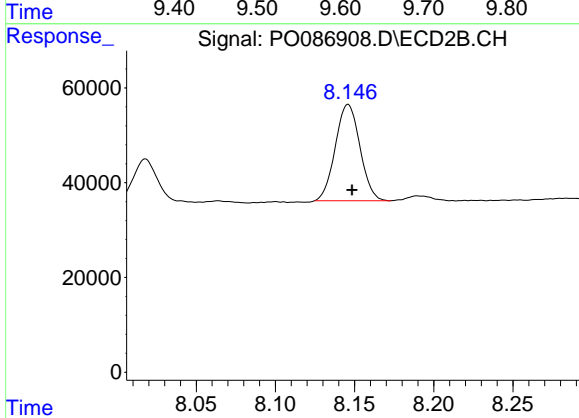
R.T.: 7.861 min
 Delta R.T.: -0.003 min
 Response: 8443
 Conc: 3.19 ng/ml



#44 AR-1268-4

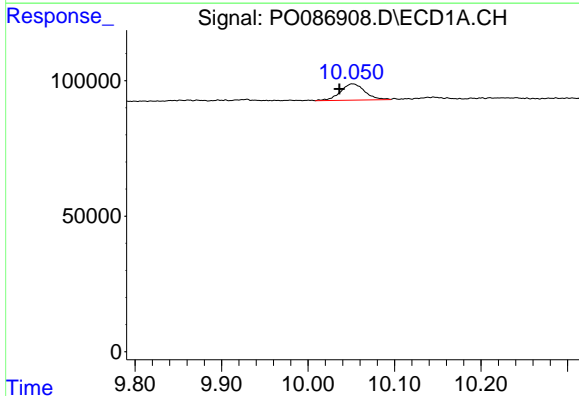
R.T.: 9.616 min
 Delta R.T.: 0.016 min
 Response: 510579
 Conc: 216.21 ng/ml

Instrument :
 ECD_O
 ClientSampleId :



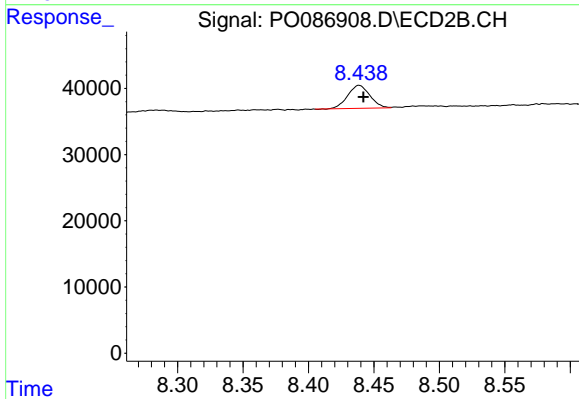
#44 AR-1268-4

R.T.: 8.146 min
 Delta R.T.: -0.002 min
 Response: 220383
 Conc: 192.93 ng/ml



#45 AR-1268-5

R.T.: 10.051 min
 Delta R.T.: 0.015 min
 Response: 117912
 Conc: 6.55 ng/ml



#45 AR-1268-5

R.T.: 8.439 min
 Delta R.T.: -0.003 min
 Response: 40868
 Conc: 4.68 ng/ml