

Data Path : Z:\pestpcbsrv\HPCHEM1\ECD_O\Data\P0060325\
 Data File : P0111435.D
 Signal(s) : Signal #1: ECD1A.ch Signal #2: ECD2B.ch
 Acq On : 03 Jun 2025 17:37
 Operator : YP/AJ
 Sample : AR1248CCC500
 Misc :
 ALS Vial : 5 Sample Multiplier: 1

Instrument :
 ECD_O
ClientSampleId :
 AR1248CCC500

Manual Integrations
APPROVED
 Reviewed By :Yogesh Patel 06/04/2025
 Supervised By :mohammad ahmed 06/05/2025

Integration File signal 1: autoint1.e
 Integration File signal 2: autoint2.e
 Quant Time: Jun 03 18:20:50 2025
 Quant Method : Z:\pestpcbsrv\HPCHEM1\ECD_O\methods\P0051525.M
 Quant Title : GC EXTRACTABLES
 QLast Update : Thu May 15 07:11:53 2025
 Response via : Initial Calibration
 Integrator: ChemStation

Volume Inj. : 2 µl
 Signal #1 Phase : ZB-MR1 Signal #2 Phase: ZB-MR2
 Signal #1 Info : 30Mx0.32mmx 0.50µ Signal #2 Info : 30M x 0.32mm x 0.25µm

Compound	RT#1	RT#2	Resp#1	Resp#2	ng/ml	ng/ml

System Monitoring Compounds						
1) SA Tetrachlo...	3.680	3.676	312.2E6	273.2E6	53.071	50.108
2) SA Decachlor...	8.718	8.666	250.2E6	84374891	48.464	45.604m
Target Compounds						
21) L5 AR-1248-1	4.768	4.754	81385230	61893351	531.353	477.101
22) L5 AR-1248-2	5.007	4.990	105.8E6	83618358	527.788	475.397
23) L5 AR-1248-3	5.221	5.032	130.8E6	89965545	510.855	479.524
24) L5 AR-1248-4	5.575	5.202	192.4E6	104.2E6	531.350	474.127
25) L5 AR-1248-5	5.616	5.594	135.5E6	103.1E6	517.169	472.090

(f)=RT Delta > 1/2 Window (#)=Amounts differ by > 25% (m)=manual int.

Data Path : Z:\pestpcbsrv\HPCHEM1\ECD_O\Data\PO060325\
 Data File : PO111435.D
 Signal(s) : Signal #1: ECD1A.ch Signal #2: ECD2B.ch
 Acq On : 03 Jun 2025 17:37
 Operator : YP/AJ
 Sample : AR1248CCC500
 Misc :
 ALS Vial : 5 Sample Multiplier: 1

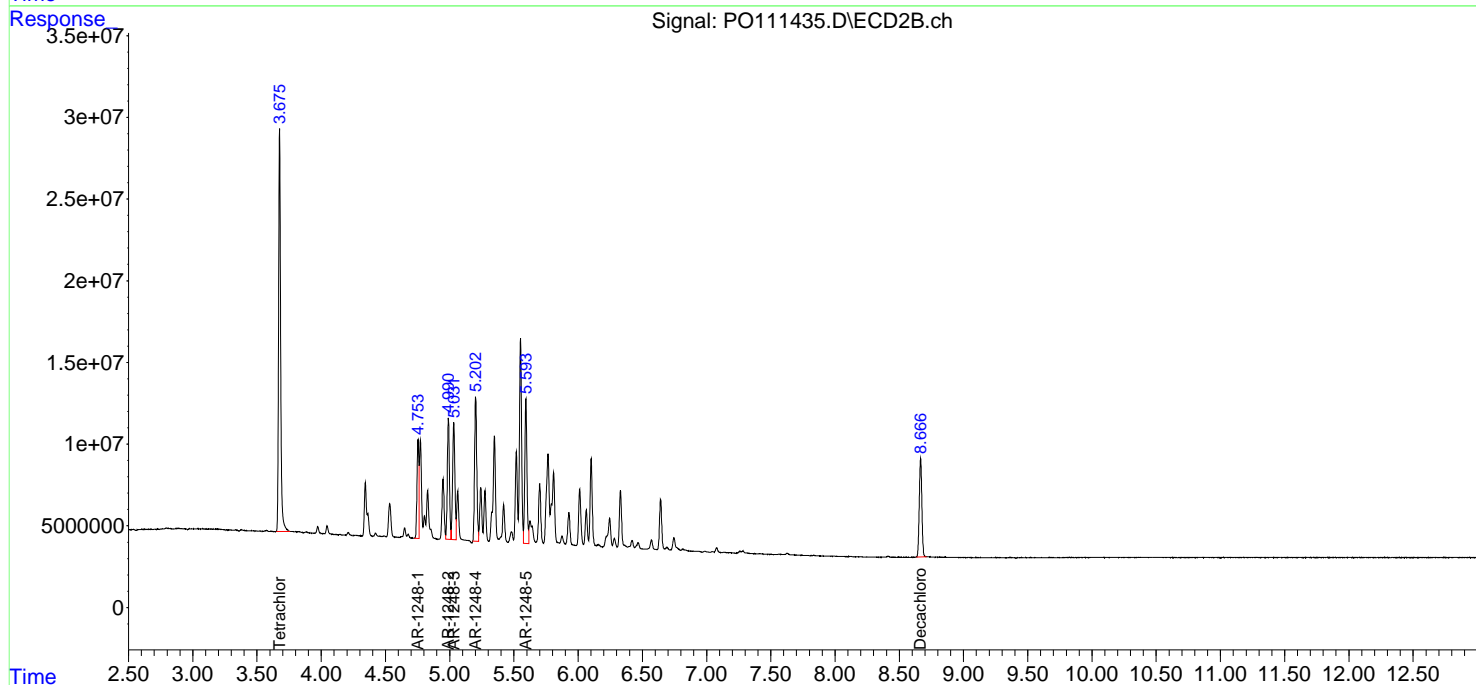
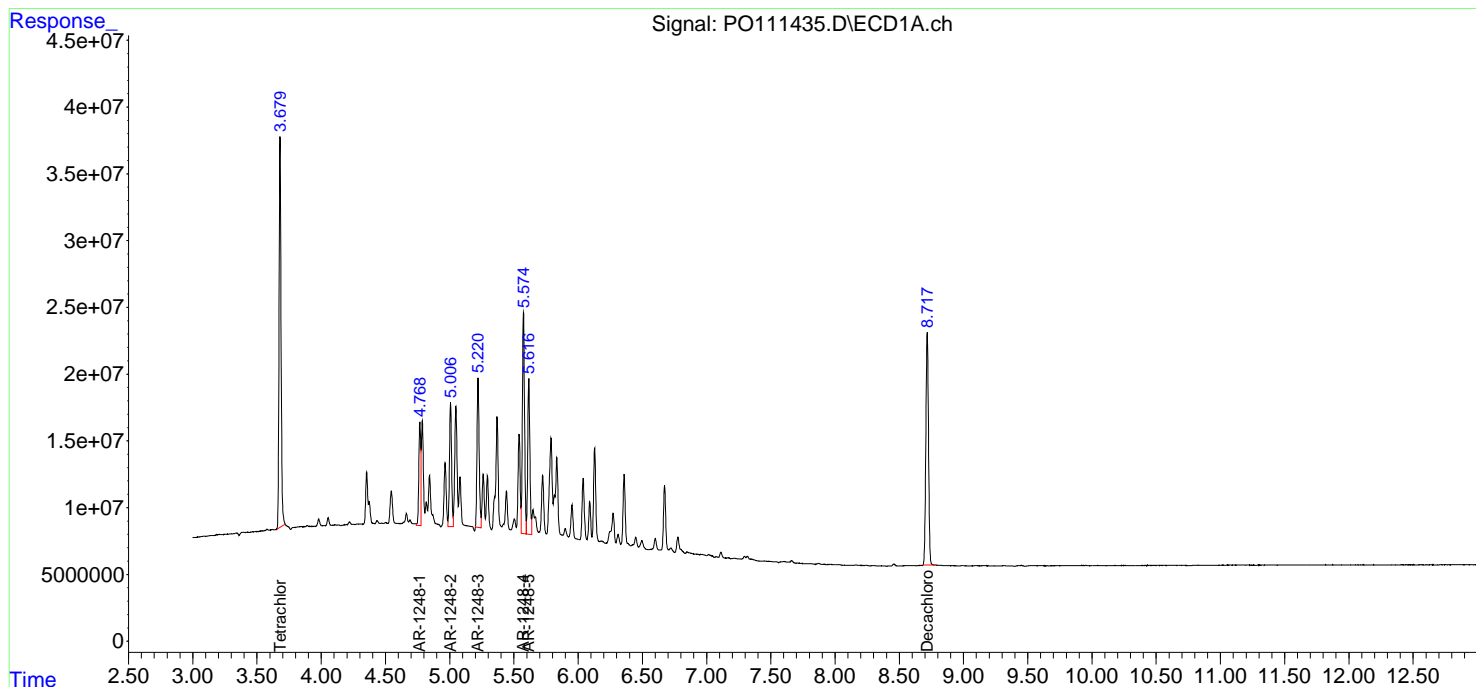
Instrument :
 ECD_O
 ClientSampleId :
 AR1248CCC500

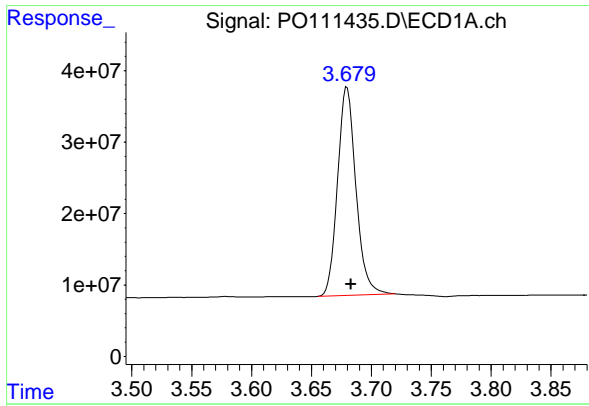
Manual Integrations
APPROVED

Reviewed By :Yogesh Patel 06/04/2025
 Supervised By :mohammad ahmed 06/05/2025

Integration File signal 1: autoint1.e
 Integration File signal 2: autoint2.e
 Quant Time: Jun 03 18:20:50 2025
 Quant Method : Z:\pestpcbsrv\HPCHEM1\ECD_O\methods\PO051525.M
 Quant Title : GC EXTRACTABLES
 QLast Update : Thu May 15 07:11:53 2025
 Response via : Initial Calibration
 Integrator: ChemStation

Volume Inj. : 2 µl
 Signal #1 Phase : ZB-MR1 Signal #2 Phase: ZB-MR2
 Signal #1 Info : 30Mx0.32mmx 0.50µm Signal #2 Info : 30M x 0.32mm x 0.25µm





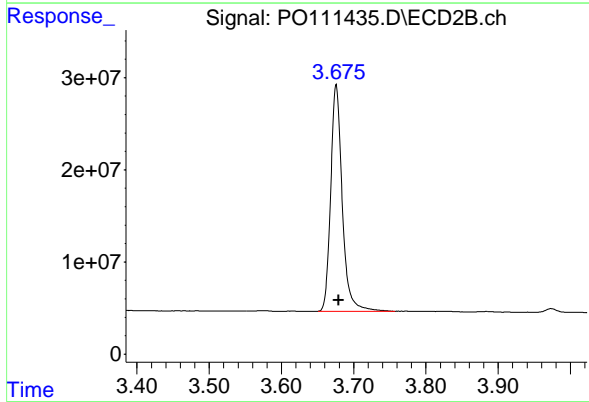
#1 Tetrachloro-m-xylene

R.T.: 3.680 min
 Delta R.T.: -0.003 min
 Response: 312227784
 Conc: 53.07 ng/ml

Instrument :
 ECD_O
 ClientSampleId :
 AR1248CCC500

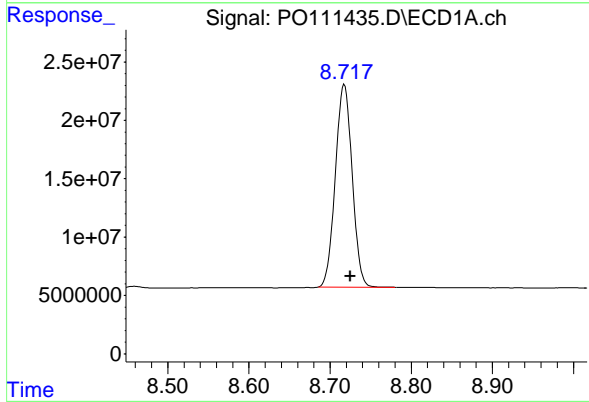
Manual Integrations
 APPROVED

Reviewed By :Yogesh Patel 06/04/2025
 Supervised By :mohammad ahmed 06/05/2025



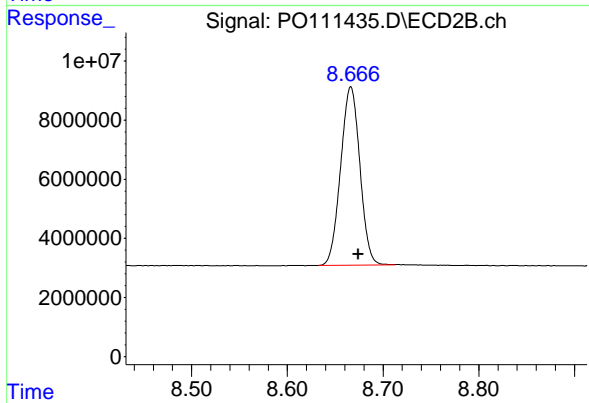
#1 Tetrachloro-m-xylene

R.T.: 3.676 min
 Delta R.T.: -0.003 min
 Response: 273163089
 Conc: 50.11 ng/ml



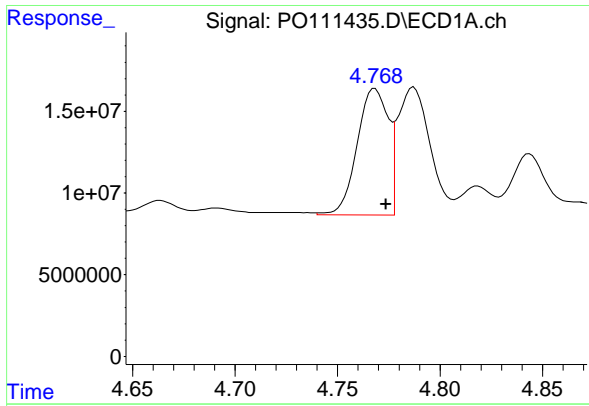
#2 Decachlorobiphenyl

R.T.: 8.718 min
 Delta R.T.: -0.008 min
 Response: 250215122
 Conc: 48.46 ng/ml



#2 Decachlorobiphenyl

R.T.: 8.666 min
 Delta R.T.: -0.008 min
 Response: 84374891
 Conc: 45.60 ng/ml m



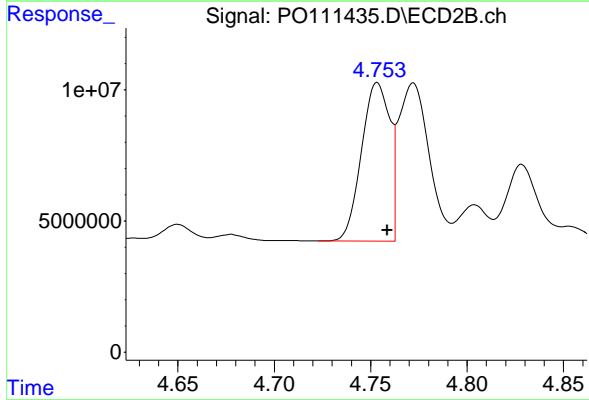
#21 AR-1248-1

R.T.: 4.768 min
 Delta R.T.: -0.005 min
 Response: 81385230
 Conc: 531.35 ng/ml

Instrument :
 ECD_O
 ClientSampleId :
 AR1248CCC500

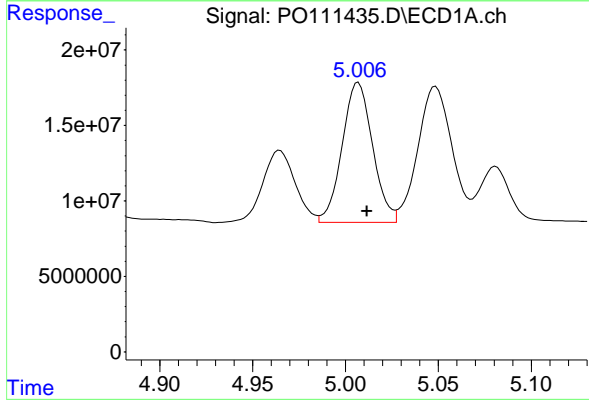
Manual Integrations
 APPROVED

Reviewed By :Yogesh Patel 06/04/2025
 Supervised By :mohammad ahmed 06/05/2025



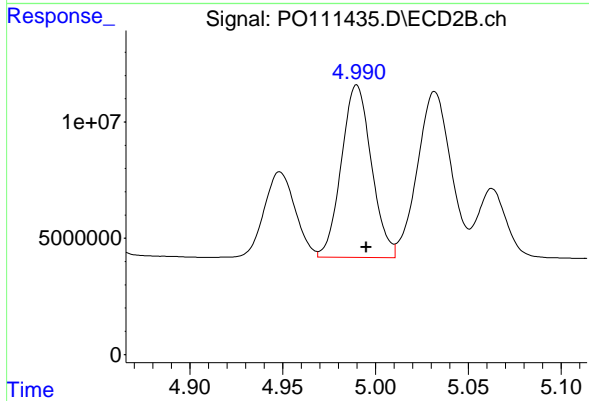
#21 AR-1248-1

R.T.: 4.754 min
 Delta R.T.: -0.005 min
 Response: 61893351
 Conc: 477.10 ng/ml



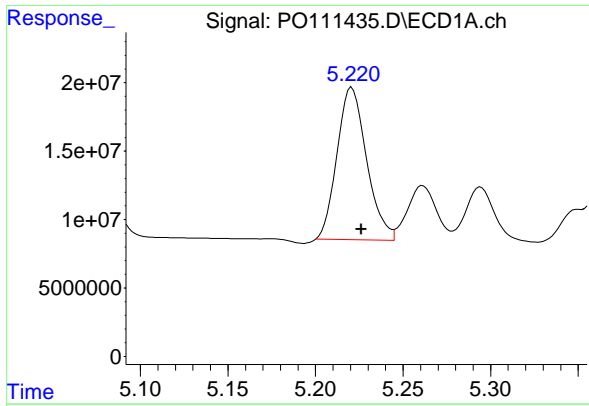
#22 AR-1248-2

R.T.: 5.007 min
 Delta R.T.: -0.005 min
 Response: 105830740
 Conc: 527.79 ng/ml



#22 AR-1248-2

R.T.: 4.990 min
 Delta R.T.: -0.005 min
 Response: 83618358
 Conc: 475.40 ng/ml



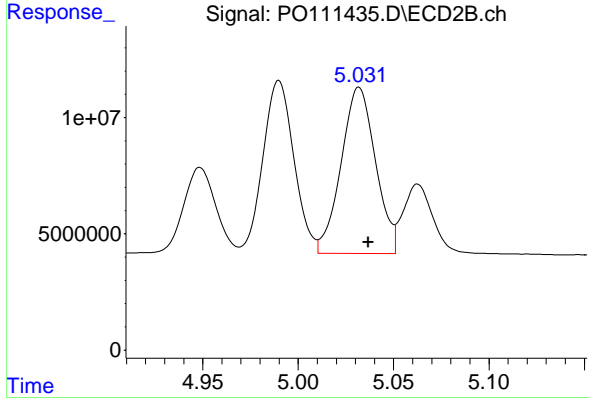
#23 AR-1248-3

R.T.: 5.221 min
 Delta R.T.: -0.005 min
 Response: 130781343
 Conc: 510.85 ng/ml

Instrument :
 ECD_O
 ClientSampleId :
 AR1248CCC500

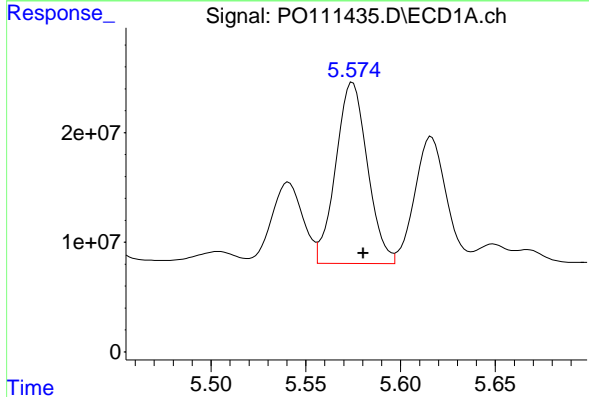
Manual Integrations
 APPROVED

Reviewed By :Yogesh Patel 06/04/2025
 Supervised By :mohammad ahmed 06/05/2025



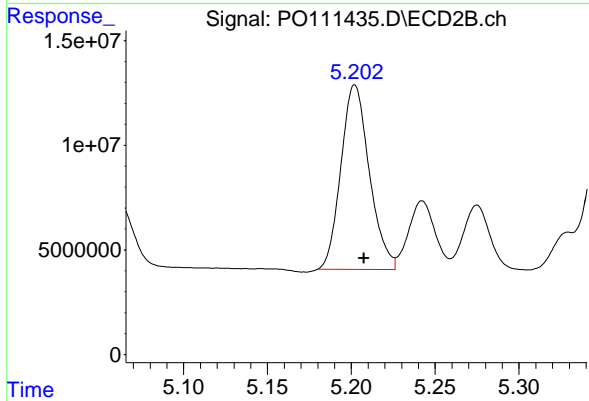
#23 AR-1248-3

R.T.: 5.032 min
 Delta R.T.: -0.005 min
 Response: 89965545
 Conc: 479.52 ng/ml



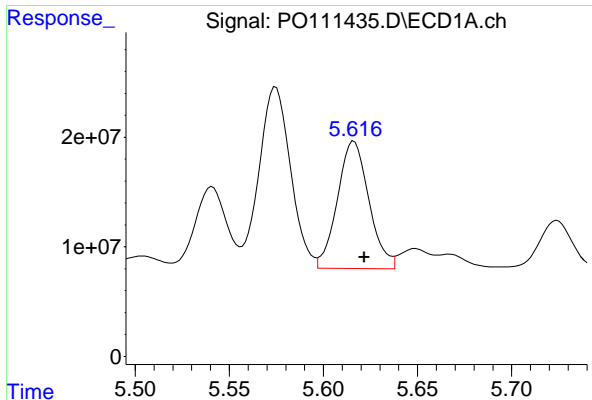
#24 AR-1248-4

R.T.: 5.575 min
 Delta R.T.: -0.006 min
 Response: 192445009
 Conc: 531.35 ng/ml



#24 AR-1248-4

R.T.: 5.202 min
 Delta R.T.: -0.005 min
 Response: 104232171
 Conc: 474.13 ng/ml



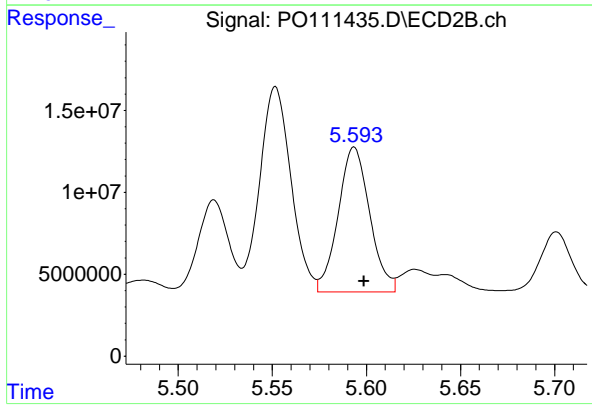
#25 AR-1248-5

R.T.: 5.616 min
 Delta R.T.: -0.005 min
 Response: 135527006
 Conc: 517.17 ng/ml

Instrument :
 ECD_O
 ClientSampleId :
 AR1248CCC500

Manual Integrations
 APPROVED

Reviewed By :Yogesh Patel 06/04/2025
 Supervised By :mohammad ahmed 06/05/2025



#25 AR-1248-5

R.T.: 5.594 min
 Delta R.T.: -0.005 min
 Response: 103069163
 Conc: 472.09 ng/ml