

Data Path : Z:\pestpcbsrv\HPCHEM1\ECD_0\Data\P0060325\
 Data File : P0111436.D
 Signal(s) : Signal #1: ECD1A.ch Signal #2: ECD2B.ch
 Acq On : 03 Jun 2025 17:56
 Operator : YP/AJ
 Sample : AR1254CCC500
 Misc :
 ALS Vial : 6 Sample Multiplier: 1

Instrument :
 ECD_0
ClientSampleId :
 AR1254CCC500

Manual Integrations
APPROVED
 Reviewed By :Yogesh Patel 06/04/2025
 Supervised By :mohammad ahmed 06/05/2025

Integration File signal 1: autoint1.e
 Integration File signal 2: autoint2.e
 Quant Time: Jun 03 18:21:33 2025
 Quant Method : Z:\pestpcbsrv\HPCHEM1\ECD_0\methods\P0051525.M
 Quant Title : GC EXTRACTABLES
 QLast Update : Thu May 15 07:11:53 2025
 Response via : Initial Calibration
 Integrator: ChemStation

Volume Inj. : 2 µl
 Signal #1 Phase : ZB-MR1 Signal #2 Phase: ZB-MR2
 Signal #1 Info : 30Mx0.32mmx 0.50µ Signal #2 Info : 30M x 0.32mm x 0.25µm

Compound	RT#1	RT#2	Resp#1	Resp#2	ng/ml	ng/ml

System Monitoring Compounds						
1) SA Tetrachlo...	3.680	3.676	321.6E6	282.2E6	54.658	51.771
2) SA Decachlor...	8.716	8.665	256.5E6	86069640	49.679	46.520m
Target Compounds						
26) L6 AR-1254-1	5.574	5.552	205.3E6	172.3E6	540.909m	531.772
27) L6 AR-1254-2	5.723	5.701	184.2E6	141.6E6	563.640m	499.983
28) L6 AR-1254-3	6.129	6.102	285.0E6	206.1E6	541.772	477.765
29) L6 AR-1254-4	6.358	6.330	187.3E6	119.4E6	557.284	482.885
30) L6 AR-1254-5	6.778	6.747	263.3E6	161.7E6	554.894	467.409

(f)=RT Delta > 1/2 Window (#)=Amounts differ by > 25% (m)=manual int.

Data Path : Z:\pestpcbsrv\HPCHEM1\ECD_O\Data\PO060325\
 Data File : PO111436.D
 Signal(s) : Signal #1: ECD1A.ch Signal #2: ECD2B.ch
 Acq On : 03 Jun 2025 17:56
 Operator : YP/AJ
 Sample : AR1254CCC500
 Misc :
 ALS Vial : 6 Sample Multiplier: 1

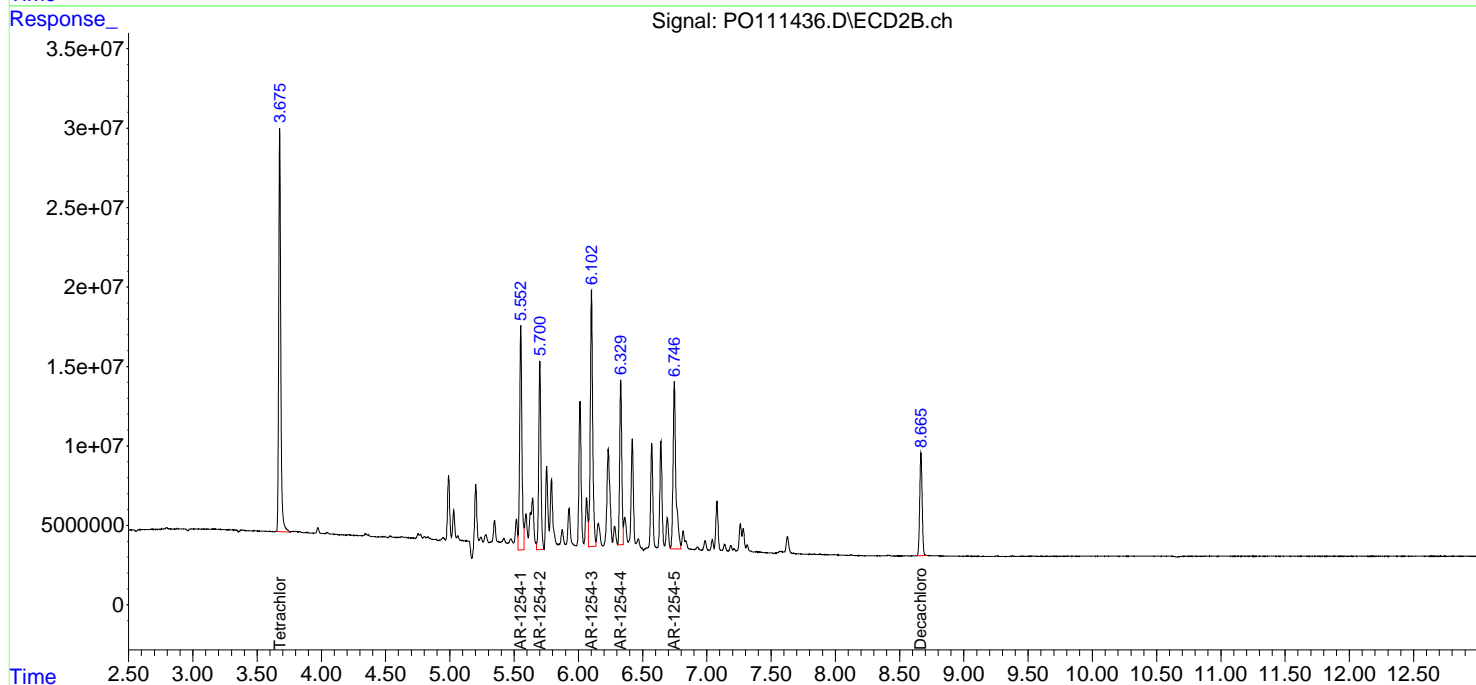
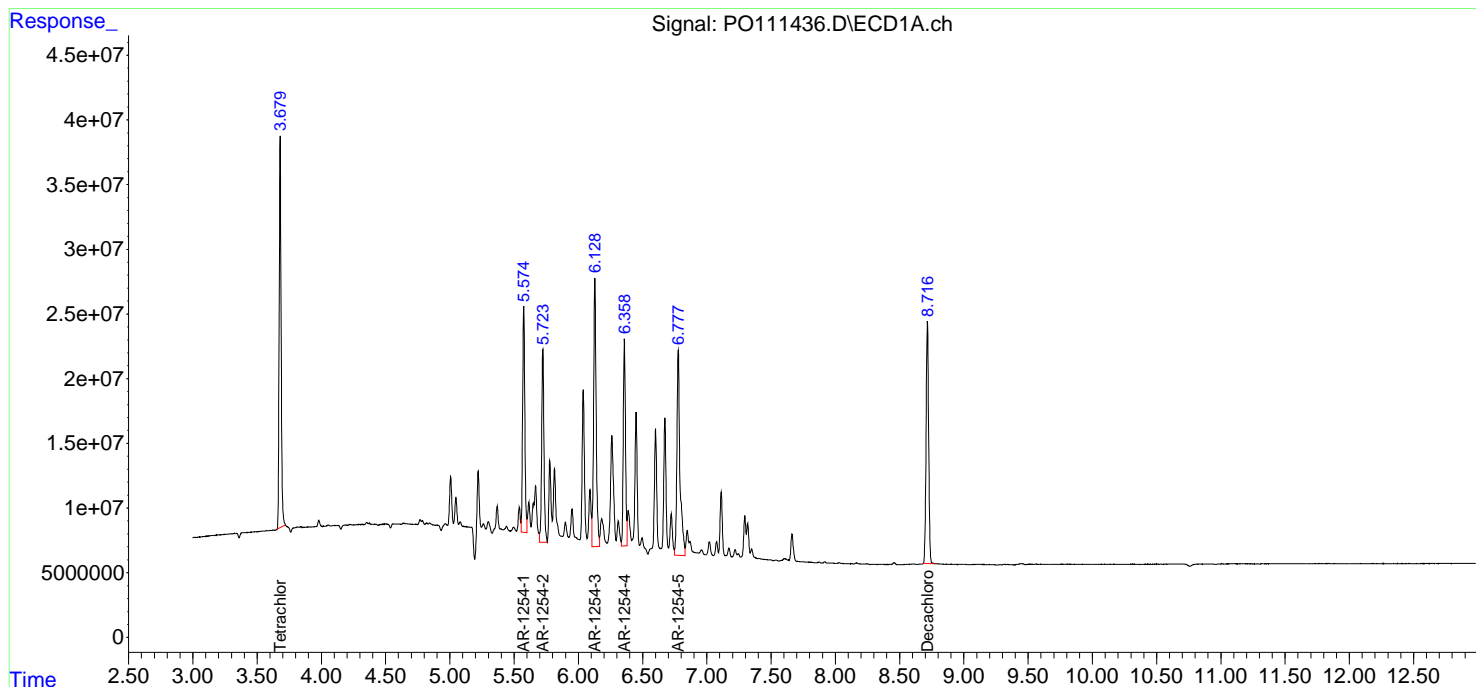
Instrument :
 ECD_O
 ClientSampleId :
 AR1254CCC500

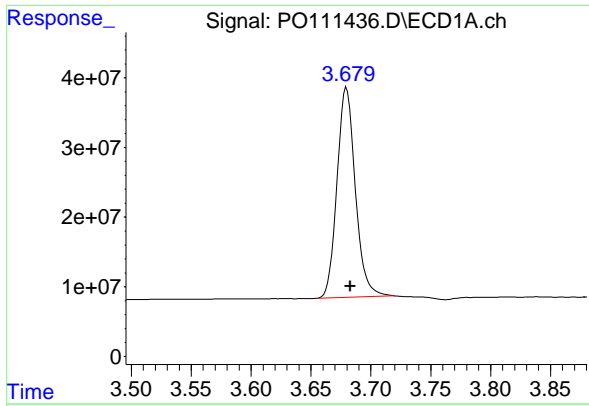
Manual Integrations
 APPROVED

Reviewed By :Yogesh Patel 06/04/2025
 Supervised By :mohammad ahmed 06/05/2025

Integration File signal 1: autoint1.e
 Integration File signal 2: autoint2.e
 Quant Time: Jun 03 18:21:33 2025
 Quant Method : Z:\pestpcbsrv\HPCHEM1\ECD_O\methods\PO051525.M
 Quant Title : GC EXTRACTABLES
 QLast Update : Thu May 15 07:11:53 2025
 Response via : Initial Calibration
 Integrator: ChemStation

Volume Inj. : 2 µl
 Signal #1 Phase : ZB-MR1 Signal #2 Phase: ZB-MR2
 Signal #1 Info : 30Mx0.32mmx 0.50µm Signal #2 Info : 30M x 0.32mm x 0.25µm





#1 Tetrachloro-m-xylene

R.T.: 3.680 min
 Delta R.T.: -0.003 min
 Response: 321562302
 Conc: 54.66 ng/ml

Instrument :

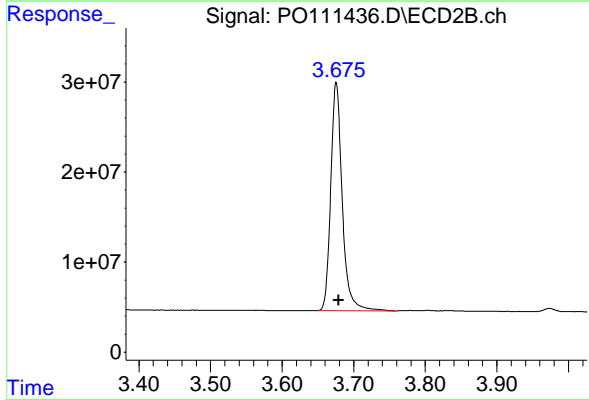
ECD_O

ClientSampleId :

AR1254CCC500

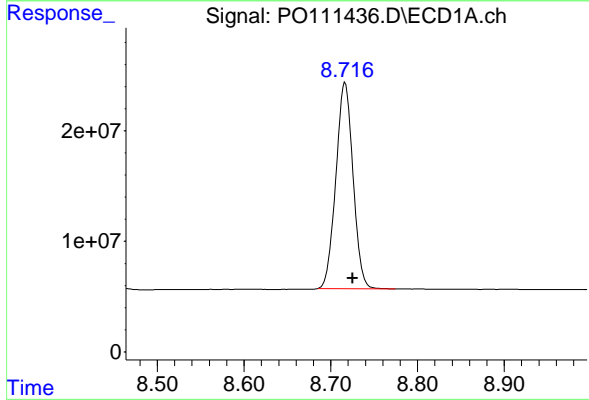
Manual Integrations
 APPROVED

Reviewed By :Yogesh Patel 06/04/2025
 Supervised By :mohammad ahmed 06/05/2025



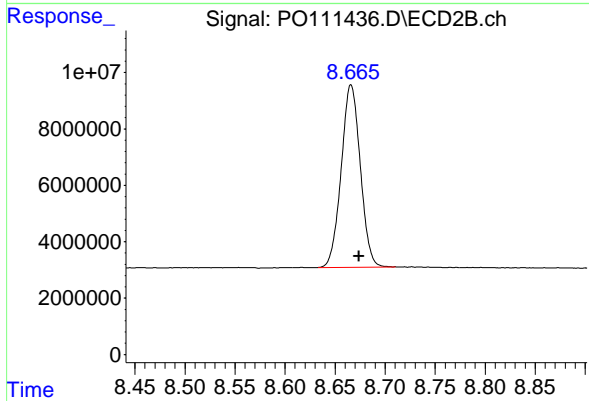
#1 Tetrachloro-m-xylene

R.T.: 3.676 min
 Delta R.T.: -0.003 min
 Response: 282224960
 Conc: 51.77 ng/ml



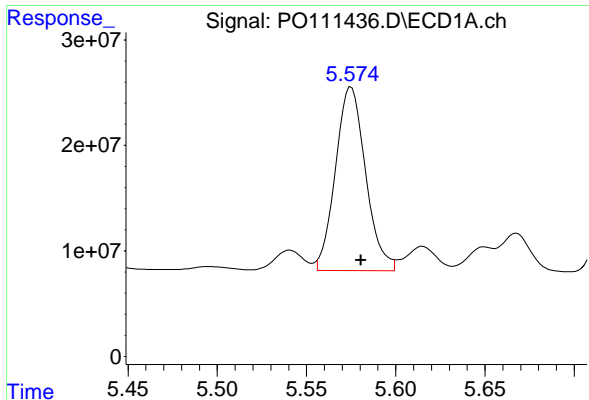
#2 Decachlorobiphenyl

R.T.: 8.716 min
 Delta R.T.: -0.009 min
 Response: 256484983
 Conc: 49.68 ng/ml



#2 Decachlorobiphenyl

R.T.: 8.665 min
 Delta R.T.: -0.009 min
 Response: 86069640
 Conc: 46.52 ng/ml m



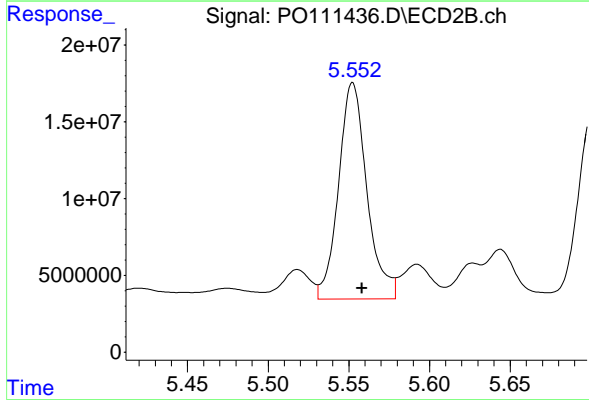
#26 AR-1254-1

R.T.: 5.574 min
 Delta R.T.: -0.006 min
 Response: 205315368
 Conc: 540.91 ng/ml

Instrument :
 ECD_O
 ClientSampleId :
 AR1254CCC500

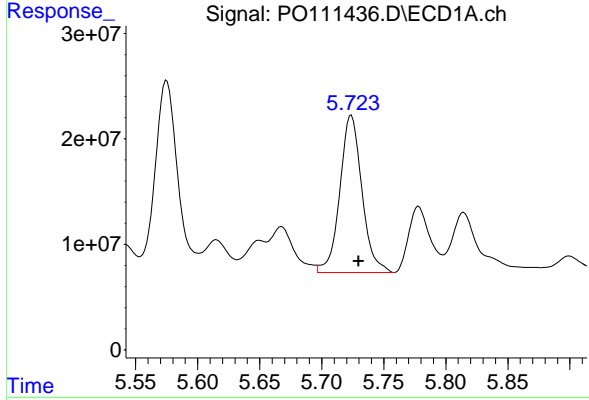
Manual Integrations
 APPROVED

Reviewed By :Yogesh Patel 06/04/2025
 Supervised By :mohammad ahmed 06/05/2025



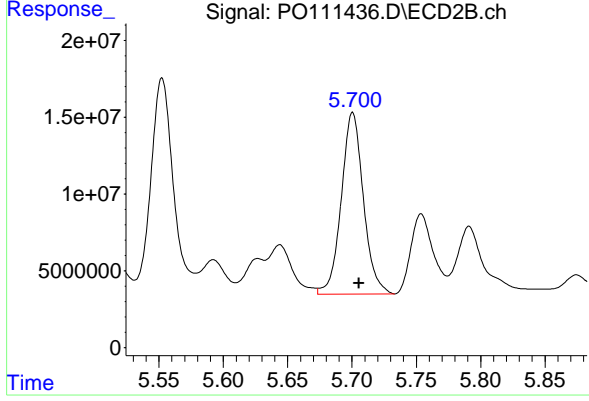
#26 AR-1254-1

R.T.: 5.552 min
 Delta R.T.: -0.006 min
 Response: 172314756
 Conc: 531.77 ng/ml



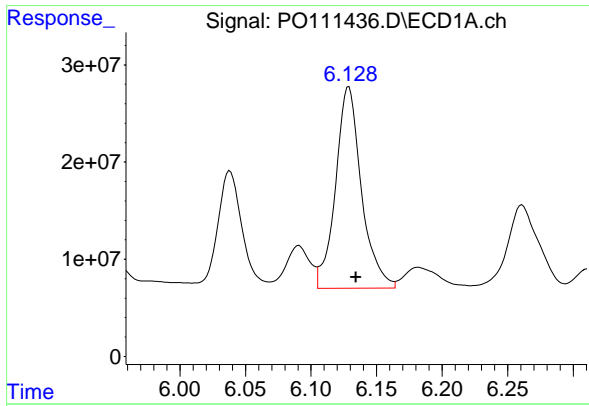
#27 AR-1254-2

R.T.: 5.723 min
 Delta R.T.: -0.007 min
 Response: 184183833
 Conc: 563.64 ng/ml m



#27 AR-1254-2

R.T.: 5.701 min
 Delta R.T.: -0.005 min
 Response: 141617477
 Conc: 499.98 ng/ml



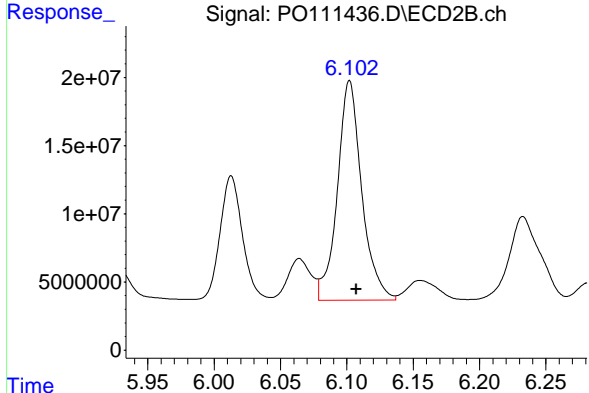
#28 AR-1254-3

R.T.: 6.129 min
 Delta R.T.: -0.005 min
 Response: 285049592
 Conc: 541.77 ng/ml

Instrument :
 ECD_O
 ClientSampleId :
 AR1254CCC500

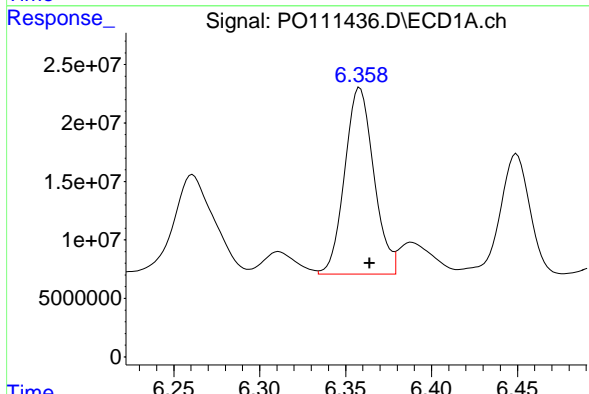
Manual Integrations
 APPROVED

Reviewed By :Yogesh Patel 06/04/2025
 Supervised By :mohammad ahmed 06/05/2025



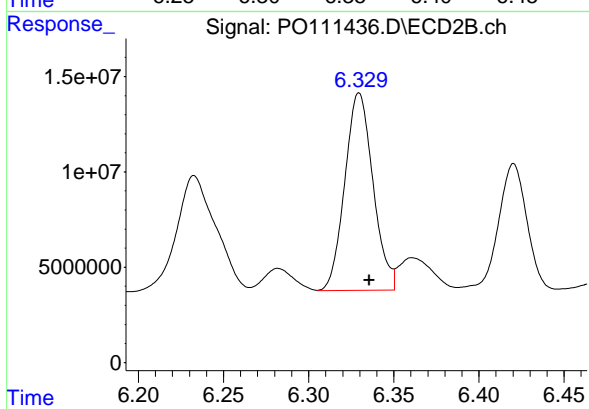
#28 AR-1254-3

R.T.: 6.102 min
 Delta R.T.: -0.005 min
 Response: 206132762
 Conc: 477.77 ng/ml



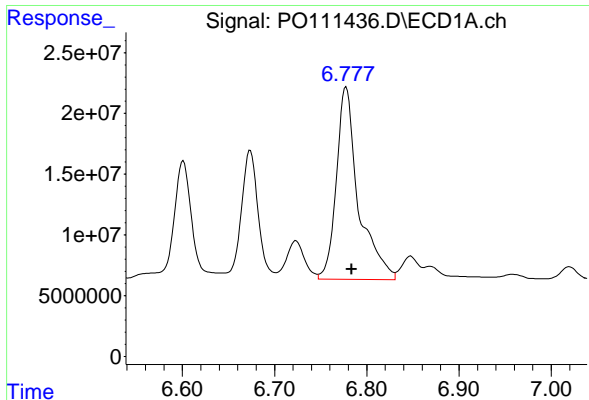
#29 AR-1254-4

R.T.: 6.358 min
 Delta R.T.: -0.006 min
 Response: 187291114
 Conc: 557.28 ng/ml



#29 AR-1254-4

R.T.: 6.330 min
 Delta R.T.: -0.006 min
 Response: 119438676
 Conc: 482.89 ng/ml



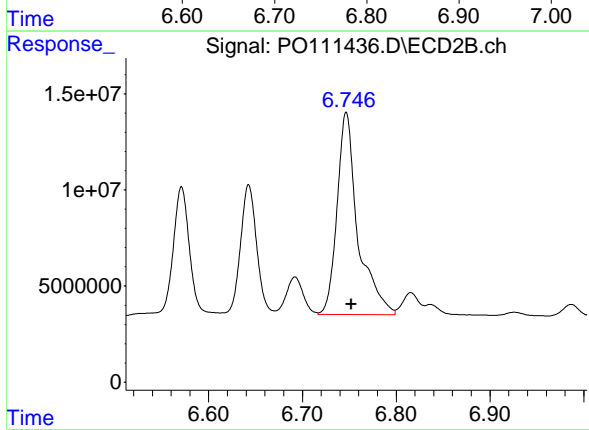
#30 AR-1254-5

R.T.: 6.778 min
Delta R.T.: -0.006 min
Response: 263272126
Conc: 554.89 ng/ml

Instrument :
ECD_O
ClientSampleId :
AR1254CCC500

Manual Integrations
APPROVED

Reviewed By :Yogesh Patel 06/04/2025
Supervised By :mohammad ahmed 06/05/2025



#30 AR-1254-5

R.T.: 6.747 min
Delta R.T.: -0.006 min
Response: 161695491
Conc: 467.41 ng/ml