

Data Path : Z:\pestpcbsrv\HPCHEM1\ECD\_0\Data\P0060421\  
 Data File : P0078439.D  
 Signal(s) : Signal #1: ECD1A.CH Signal #2: ECD2B.CH  
 Acq On : 04 Jun 2021 13:23  
 Operator : DD\AJ  
 Sample : PB136820BS  
 Misc :  
 ALS Vial : 15 Sample Multiplier: 1

Instrument :  
 ECD\_O  
 ClientSampleId :  
 PB136820BS

Integration File signal 1: autoint1.e  
 Integration File signal 2: autoint2.e  
 Quant Time: Jun 05 01:36:25 2021  
 Quant Method : Z:\pestpcbsrv\HPCHEM1\ECD\_0\methods\P0051821.M  
 Quant Title : GC EXTRACTABLES  
 QLast Update : Wed May 19 06:28:32 2021  
 Response via : Initial Calibration  
 Integrator: ChemStation 6890 Scale Mode: Small noise peaks clipped

Volume Inj. : 2 µl  
 Signal #1 Phase : ZB-MR1 Signal #2 Phase: ZB-MR2  
 Signal #1 Info : 30Mx0.32mmx 0.50µ Signal #2 Info : 30M x 0.32mm x 0.25µm

Compound	RT#1	RT#2	Resp#1	Resp#2	ng/ml	ng/ml
-----						
System Monitoring Compounds						
1) SA Tetrachlo...	4.339	3.616	1418475	601311	19.192	19.900
2) SA Decachlor...	9.948	8.802	918299	562181	18.574	19.334
Target Compounds						
3) L1 AR-1016-1	5.635	4.843	1028937	475246	422.394	435.274
4) L1 AR-1016-2	5.656	4.862	1499815	680637	420.669	437.818
5) L1 AR-1016-3	5.720	5.050	943209	343254	425.650	419.359
6) L1 AR-1016-4	5.825	5.103	763016	301041	437.130	423.213
7) L1 AR-1016-5	6.136	5.326	733742	373661	424.139	423.855
8) L2 AR-1221-1	4.585	3.867	99385	43388	120.749	113.576
9) L2 AR-1221-2	4.685	3.964	120513	56210	196.095	204.053
10) L2 AR-1221-3	4.770	4.050	546329	258621	273.933	289.987
11) L3 AR-1232-1	4.770	4.050	546329	258621	357.168	372.045
12) L3 AR-1232-2	5.343	4.862	758375	680637	962.062	1023.132
13) L3 AR-1232-3	5.656	5.050	1499815	343254	1032.946	1010.073
14) L3 AR-1232-4	5.825	5.145	763016	358600	1062.559	1131.990
15) L3 AR-1232-5	5.925	5.326	603611	373661	1229.362	1073.922
16) L4 AR-1242-1	5.635	4.862	1028937	680637	560.079	792.443 #
17) L4 AR-1242-2	5.656	4.862	1499815	680637	555.204	562.542
18) L4 AR-1242-3	5.720	5.050	943209	343254	541.912	532.786
19) L4 AR-1242-4	5.825	5.145	763016	358600	545.785	530.432
20) L4 AR-1242-5	6.597	5.699	91754	307361	68.569	374.828 #
21) L5 AR-1248-1	5.635	4.862	1028937	680637	722.110	1056.163 #
22) L5 AR-1248-2	5.925	5.103	603611	301041	317.941	314.914
23) L5 AR-1248-3	6.136	5.145	733742	358600	330.805	373.061
24) L5 AR-1248-4	6.559	5.326	111445	373661	47.879	326.267 #
25) L5 AR-1248-5	6.597	5.742	91754	42500	40.553	40.560
26) L6 AR-1254-1	6.528	5.699	538498	307361	216.962	178.222
27) L6 AR-1254-2	6.755	5.858	584082	297566	150.516	185.634
28) L6 AR-1254-3	7.130	6.288	325306	526705	82.916	220.679 #
29) L6 AR-1254-4	7.421	6.508	186303	58592	68.602	40.357 #
30) L6 AR-1254-5	7.846	6.931	1755011	1001739	600.110	440.725 #
31) L7 AR-1260-1	7.295	6.405	1304684	738900	464.919	461.161
32) L7 AR-1260-2	7.560	6.603	1501708	890319	446.394	461.167
33) L7 AR-1260-3	7.920	6.752	937916	811572	384.394	442.362
34) L7 AR-1260-4	8.146	7.230	1085877	600396	405.369	398.286
35) L7 AR-1260-5	8.459	7.478	1958853	1361166	381.405	390.328
36) L8 AR-1262-1	7.920	6.931	937916	1001739	261.811	853.706 #
37) L8 AR-1262-2	8.459	7.478	1958853	1361166	325.416	348.927
38) L8 AR-1262-3	8.748	7.759f	1235258	270908	305.854	168.338 #
39) L8 AR-1262-4	8.793f	7.820f	680940	980263	218.354	326.882 #
40) L8 AR-1262-5	9.355	8.317	432022	255432	208.494	184.554
41) L9 AR-1268-1	8.748	7.759	1235258	270908	174.262	59.173 #
42) L9 AR-1268-2	8.793f	7.820f	680940	980263	105.226	236.922 #

Data Path : Z:\pestpcbsrv\HPCHEM1\ECD\_0\Data\P0060421\  
 Data File : P0078439.D  
 Signal(s) : Signal #1: ECD1A.CH Signal #2: ECD2B.CH  
 Acq On : 04 Jun 2021 13:23  
 Operator : DD\AJ  
 Sample : PB136820BS  
 Misc :  
 ALS Vial : 15 Sample Multiplier: 1

Instrument :  
 ECD\_0  
 ClientSampleId :  
 PB136820BS

Integration File signal 1: autoint1.e  
 Integration File signal 2: autoint2.e  
 Quant Time: Jun 05 01:36:25 2021  
 Quant Method : Z:\pestpcbsrv\HPCHEM1\ECD\_0\methods\P0051821.M  
 Quant Title : GC EXTRACTABLES  
 QLast Update : Wed May 19 06:28:32 2021  
 Response via : Initial Calibration  
 Integrator: ChemStation 6890 Scale Mode: Small noise peaks clipped

Volume Inj. : 2 µl  
 Signal #1 Phase : ZB-MR1 Signal #2 Phase: ZB-MR2  
 Signal #1 Info : 30Mx0.32mmx 0.50µ Signal #2 Info : 30M x 0.32mm x 0.25µm

	Compound	RT#1	RT#2	Resp#1	Resp#2	ng/ml	ng/ml
43)	L9 AR-1268-3	8.993	8.025	30578	21417	5.619	6.047
44)	L9 AR-1268-4	9.355	8.317	432022	255432	191.832	168.830
45)	L9 AR-1268-5	9.685	8.586	143750	92155	8.220	8.748

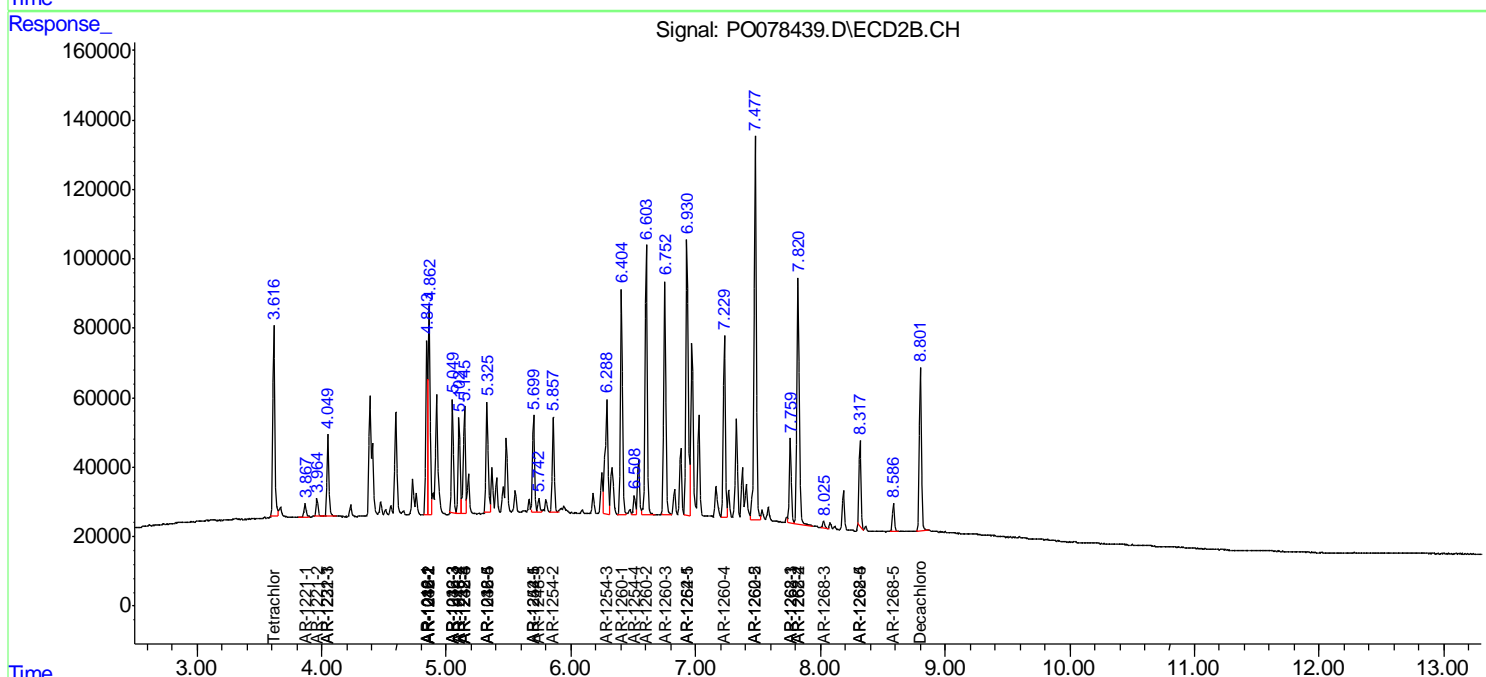
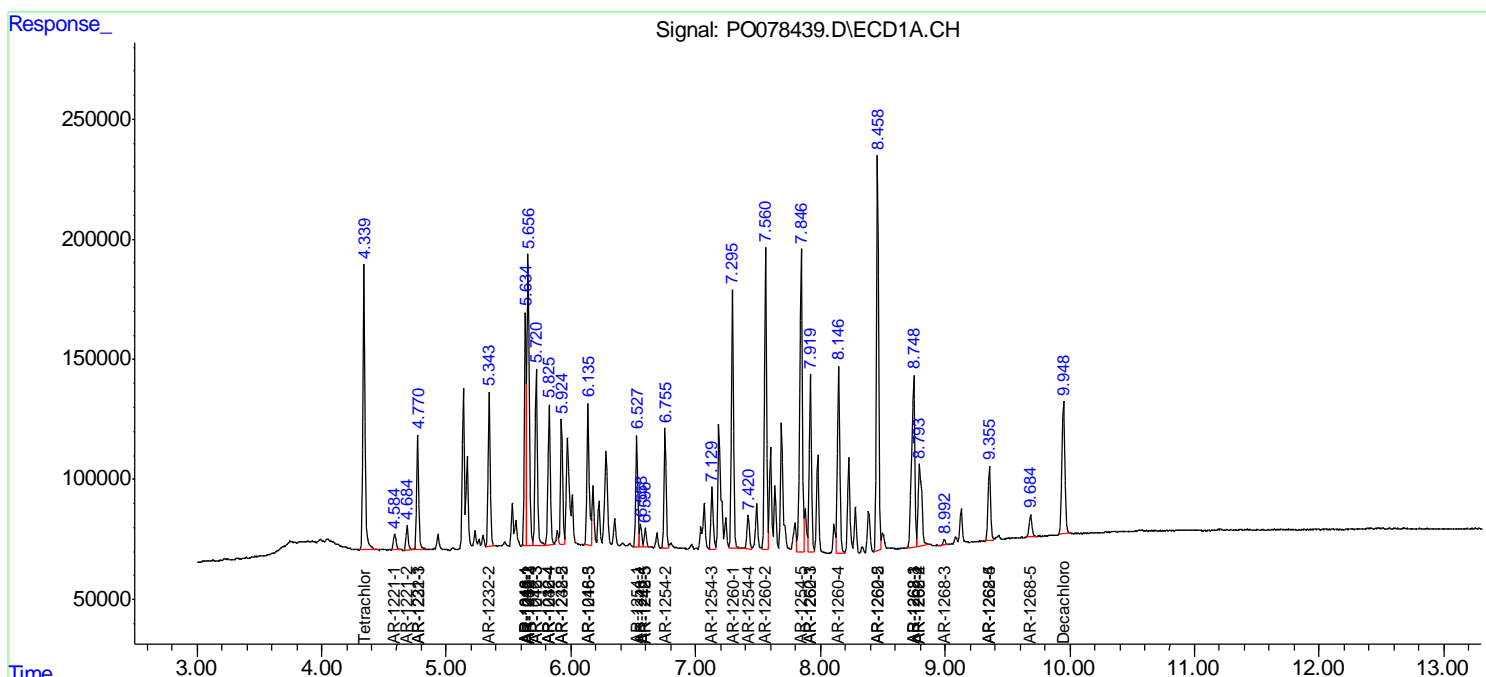
(f)=RT Delta > 1/2 Window (#)=Amounts differ by > 25% (m)=manual int.

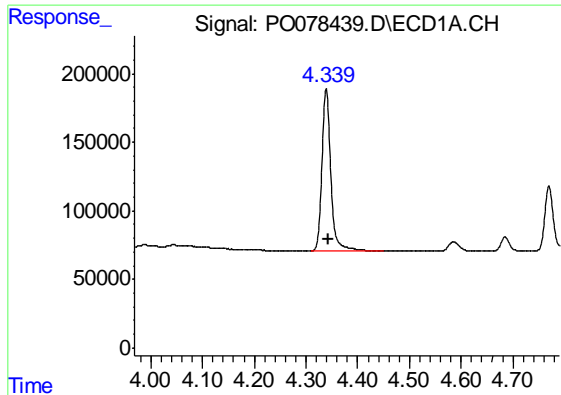
Data Path : Z:\pestpcbsrv\HPCHEM1\ECD\_O\Data\PO060421\  
 Data File : PO078439.D  
 Signal(s) : Signal #1: ECD1A.CH Signal #2: ECD2B.CH  
 Acq On : 04 Jun 2021 13:23  
 Operator : DD\AJ  
 Sample : PB136820BS  
 Misc :  
 ALS Vial : 15 Sample Multiplier: 1

**Instrument :**  
 ECD\_O  
**Client Sampled :**  
 PB136820BS

Integration File signal 1: autoint1.e  
 Integration File signal 2: autoint2.e  
 Quant Time: Jun 05 01:36:25 2021  
 Quant Method : Z:\pestpcbsrv\HPCHEM1\ECD\_O\methods\PO051821.M  
 Quant Title : GC EXTRACTABLES  
 QLast Update : Wed May 19 06:28:32 2021  
 Response via : Initial Calibration  
 Integrator: ChemStation 6890 Scale Mode: Small noise peaks clipped

Volume Inj. : 2 µl  
 Signal #1 Phase : ZB-MR1 Signal #2 Phase: ZB-MR2  
 Signal #1 Info : 30Mx0.32mmx 0.50µ Signal #2 Info : 30M x 0.32mm x 0.25µm

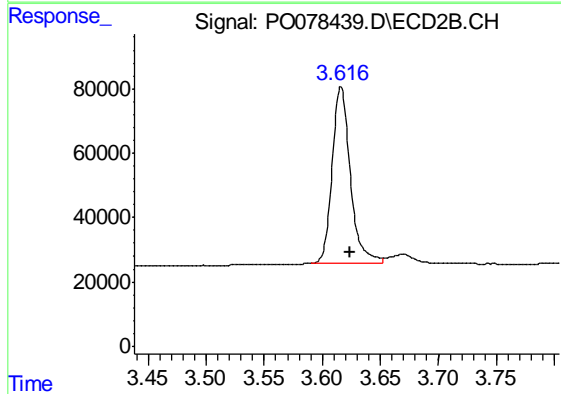




#1 Tetrachloro-m-xylene

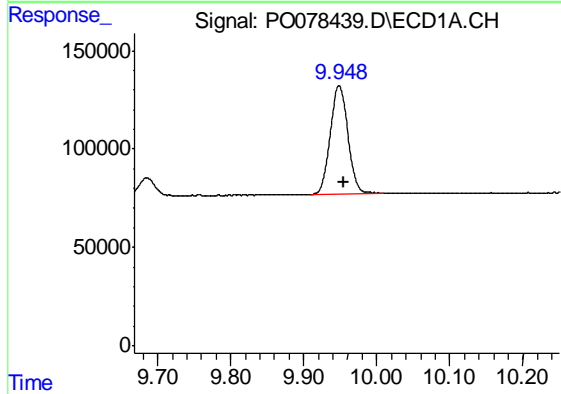
R.T.: 4.339 min  
 Delta R.T.: -0.005 min  
 Response: 1418475  
 Conc: 19.19 ng/ml

Instrument :  
 ECD\_O  
 ClientSampleId :  
 PB136820BS



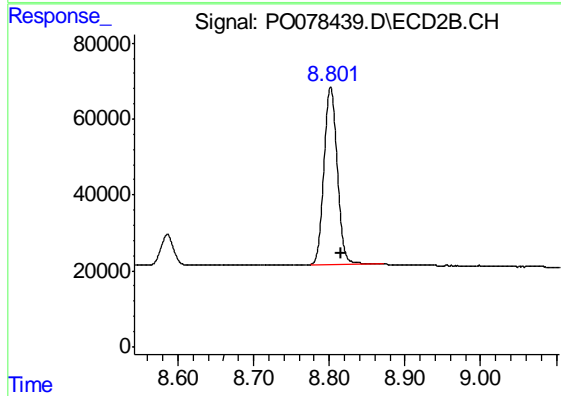
#1 Tetrachloro-m-xylene

R.T.: 3.616 min  
 Delta R.T.: -0.008 min  
 Response: 601311  
 Conc: 19.90 ng/ml



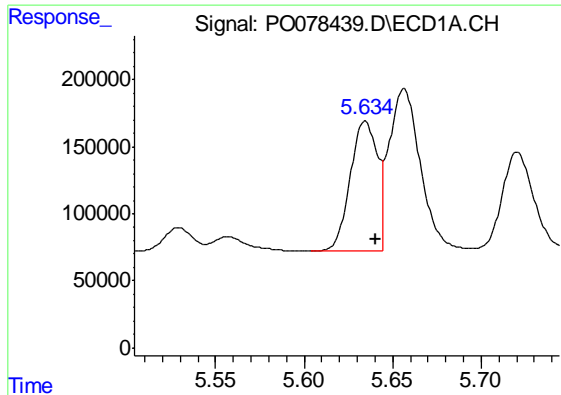
#2 Decachlorobiphenyl

R.T.: 9.948 min  
 Delta R.T.: -0.007 min  
 Response: 918299  
 Conc: 18.57 ng/ml



#2 Decachlorobiphenyl

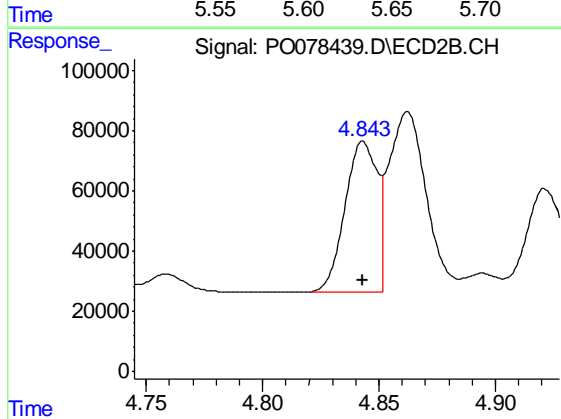
R.T.: 8.802 min  
 Delta R.T.: -0.015 min  
 Response: 562181  
 Conc: 19.33 ng/ml



#3 AR-1016-1

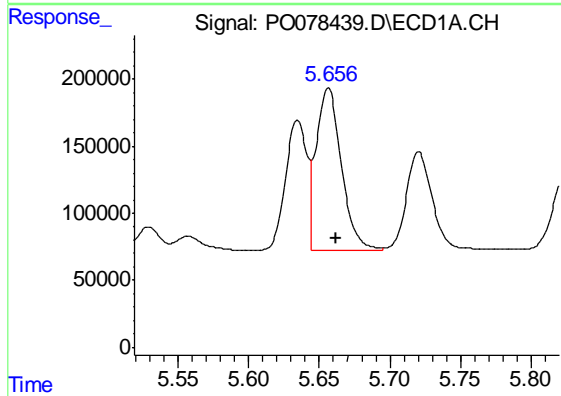
R.T.: 5.635 min  
 Delta R.T.: -0.006 min  
 Response: 1028937  
 Conc: 422.39 ng/ml

Instrument :  
 ECD\_O  
 ClientSampled :  
 PB136820BS



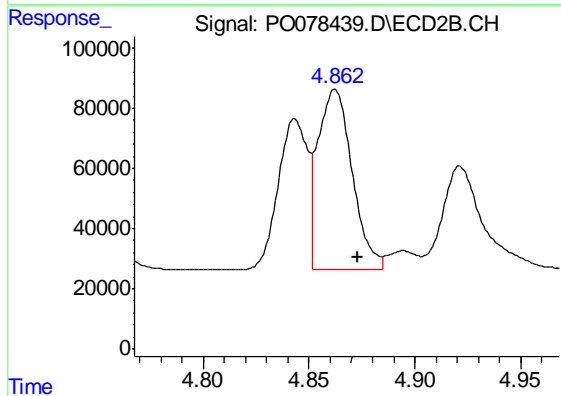
#3 AR-1016-1

R.T.: 4.843 min  
 Delta R.T.: 0.000 min  
 Response: 475246  
 Conc: 435.27 ng/ml



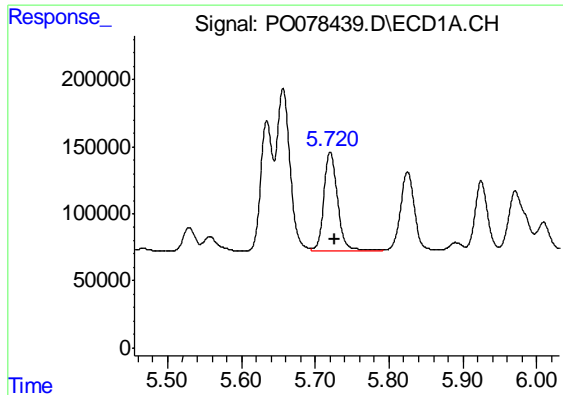
#4 AR-1016-2

R.T.: 5.656 min  
 Delta R.T.: -0.005 min  
 Response: 1499815  
 Conc: 420.67 ng/ml



#4 AR-1016-2

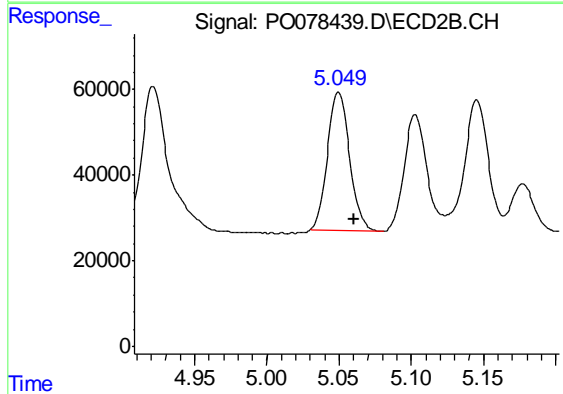
R.T.: 4.862 min  
 Delta R.T.: -0.011 min  
 Response: 680637  
 Conc: 437.82 ng/ml



#5 AR-1016-3

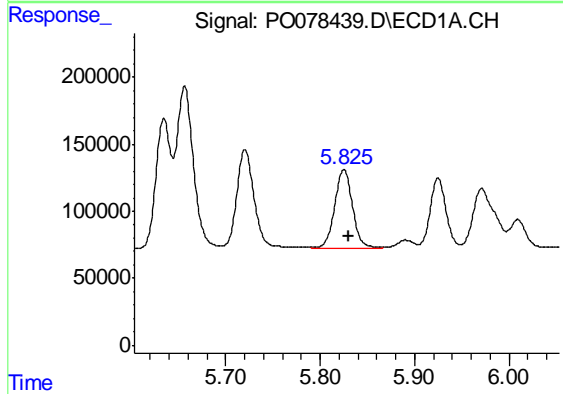
R.T.: 5.720 min  
 Delta R.T.: -0.006 min  
 Response: 943209  
 Conc: 425.65 ng/ml

Instrument :  
 ECD\_O  
 ClientSampleId :  
 PB136820BS



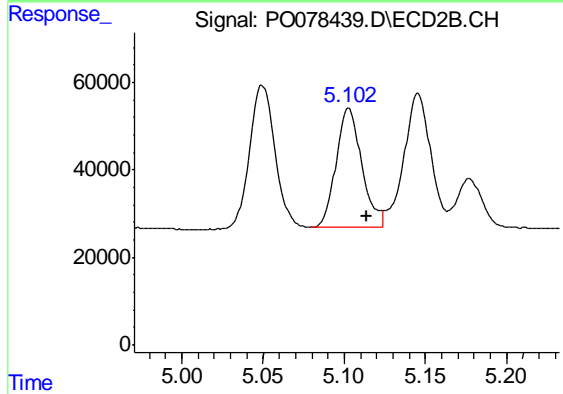
#5 AR-1016-3

R.T.: 5.050 min  
 Delta R.T.: -0.010 min  
 Response: 343254  
 Conc: 419.36 ng/ml



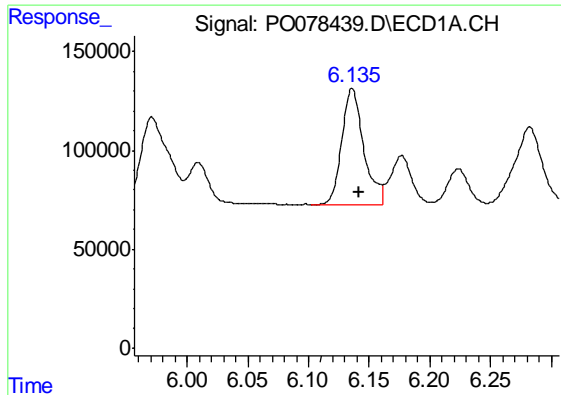
#6 AR-1016-4

R.T.: 5.825 min  
 Delta R.T.: -0.005 min  
 Response: 763016  
 Conc: 437.13 ng/ml



#6 AR-1016-4

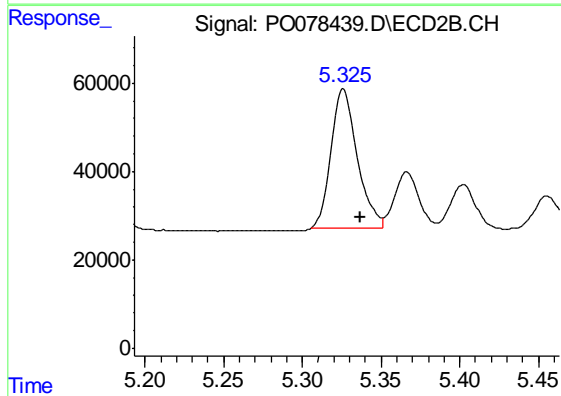
R.T.: 5.103 min  
 Delta R.T.: -0.011 min  
 Response: 301041  
 Conc: 423.21 ng/ml



#7 AR-1016-5

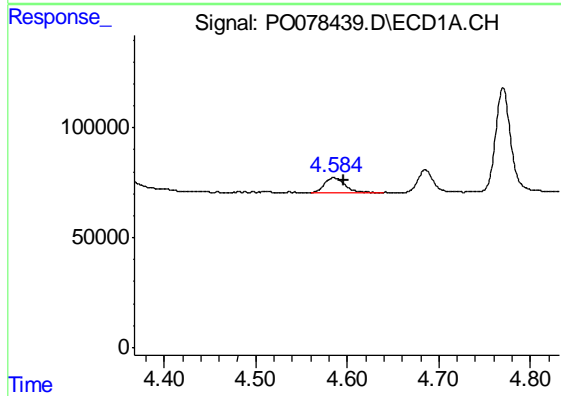
R.T.: 6.136 min  
 Delta R.T.: -0.006 min  
 Response: 733742  
 Conc: 424.14 ng/ml

Instrument :  
 ECD\_O  
 ClientSampleId :  
 PB136820BS



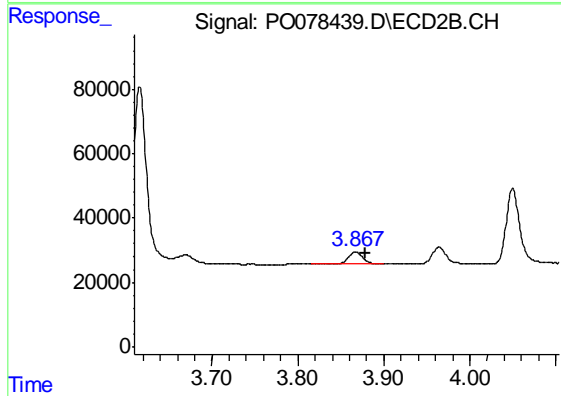
#7 AR-1016-5

R.T.: 5.326 min  
 Delta R.T.: -0.011 min  
 Response: 373661  
 Conc: 423.85 ng/ml



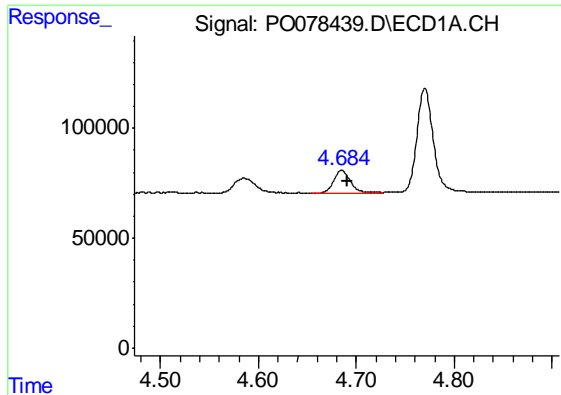
#8 AR-1221-1

R.T.: 4.585 min  
 Delta R.T.: -0.011 min  
 Response: 99385  
 Conc: 120.75 ng/ml



#8 AR-1221-1

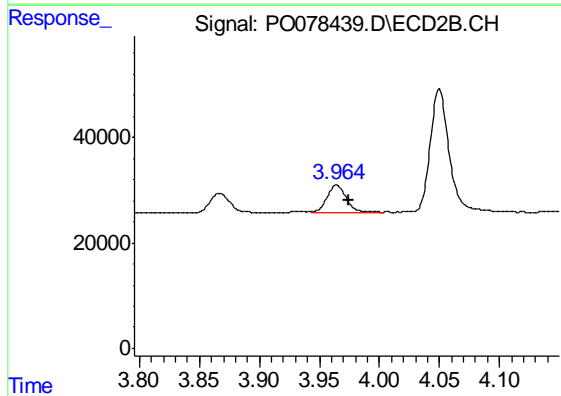
R.T.: 3.867 min  
 Delta R.T.: -0.011 min  
 Response: 43388  
 Conc: 113.58 ng/ml



#9 AR-1221-2

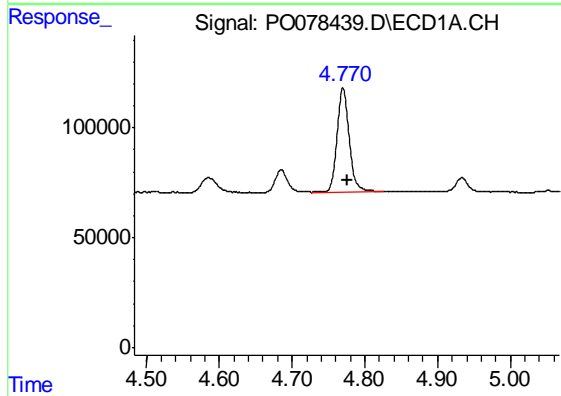
R.T.: 4.685 min  
 Delta R.T.: -0.006 min  
 Response: 120513  
 Conc: 196.09 ng/ml

Instrument :  
 ECD\_O  
 ClientSampleId :  
 PB136820BS



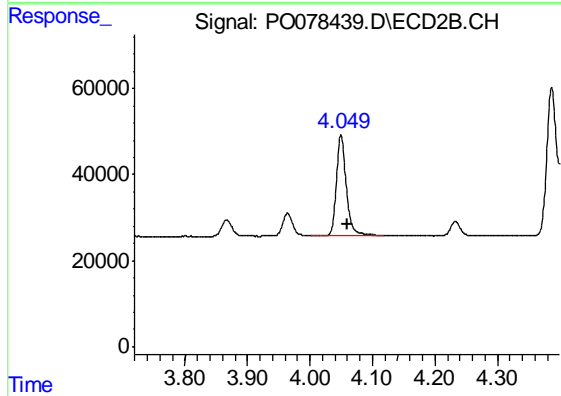
#9 AR-1221-2

R.T.: 3.964 min  
 Delta R.T.: -0.010 min  
 Response: 56210  
 Conc: 204.05 ng/ml



#10 AR-1221-3

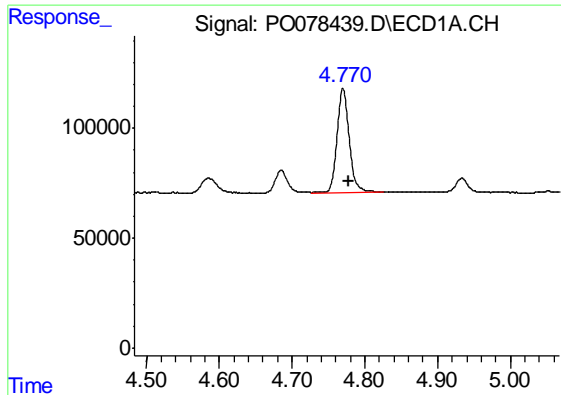
R.T.: 4.770 min  
 Delta R.T.: -0.006 min  
 Response: 546329  
 Conc: 273.93 ng/ml



#10 AR-1221-3

R.T.: 4.050 min  
 Delta R.T.: -0.011 min  
 Response: 258621  
 Conc: 289.99 ng/ml

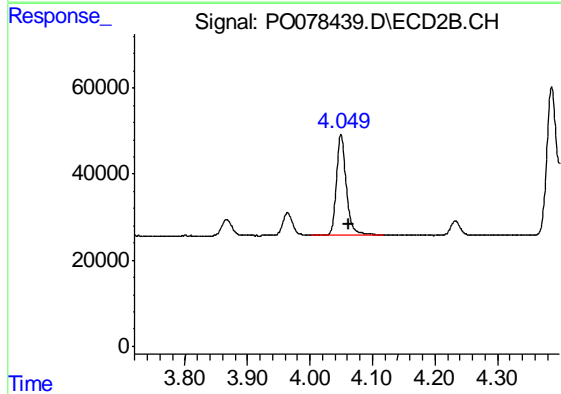




#11 AR-1232-1

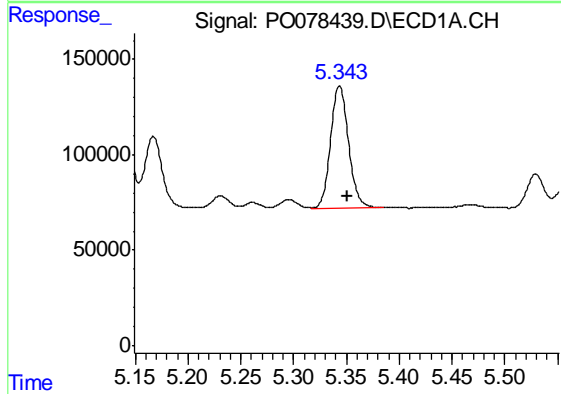
R.T.: 4.770 min  
 Delta R.T.: -0.007 min  
 Response: 546329  
 Conc: 357.17 ng/ml

Instrument :  
 ECD\_O  
 ClientSampleId :  
 PB136820BS



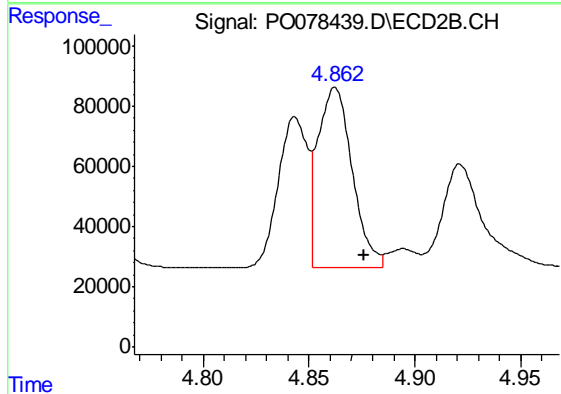
#11 AR-1232-1

R.T.: 4.050 min  
 Delta R.T.: -0.012 min  
 Response: 258621  
 Conc: 372.05 ng/ml



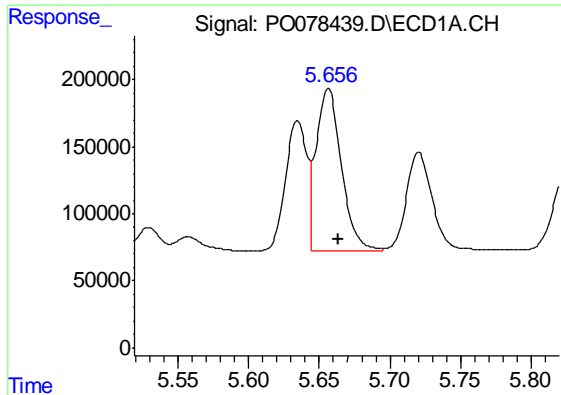
#12 AR-1232-2

R.T.: 5.343 min  
 Delta R.T.: -0.008 min  
 Response: 758375  
 Conc: 962.06 ng/ml



#12 AR-1232-2

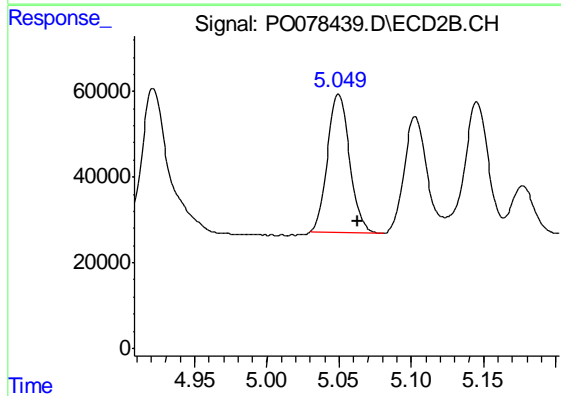
R.T.: 4.862 min  
 Delta R.T.: -0.013 min  
 Response: 680637  
 Conc: 1023.13 ng/ml



#13 AR-1232-3

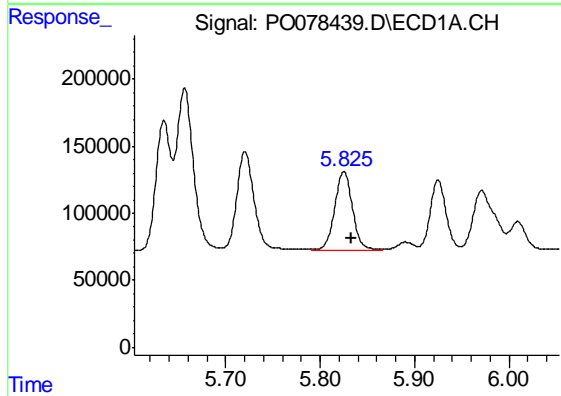
R.T.: 5.656 min  
 Delta R.T.: -0.008 min  
 Response: 1499815  
 Conc: 1032.95 ng/ml

Instrument :  
 ECD\_O  
 ClientSampleId :  
 PB136820BS



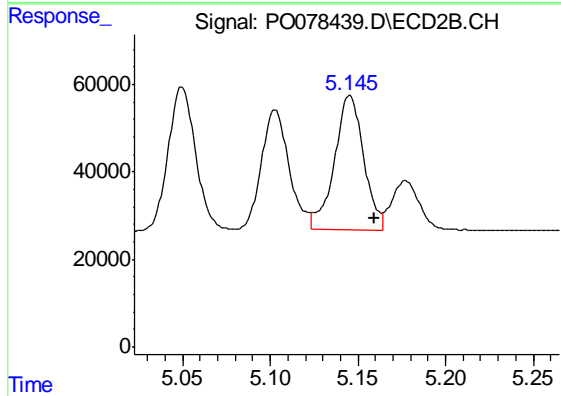
#13 AR-1232-3

R.T.: 5.050 min  
 Delta R.T.: -0.014 min  
 Response: 343254  
 Conc: 1010.07 ng/ml



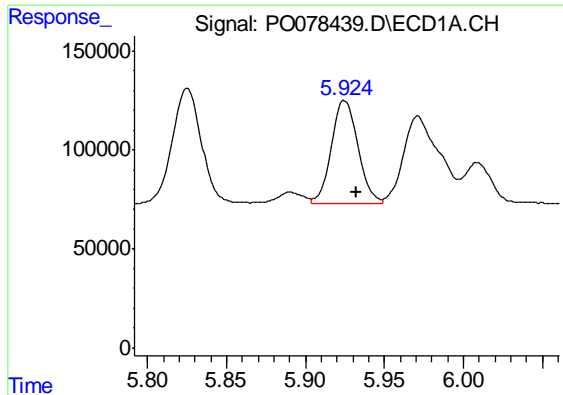
#14 AR-1232-4

R.T.: 5.825 min  
 Delta R.T.: -0.007 min  
 Response: 763016  
 Conc: 1062.56 ng/ml



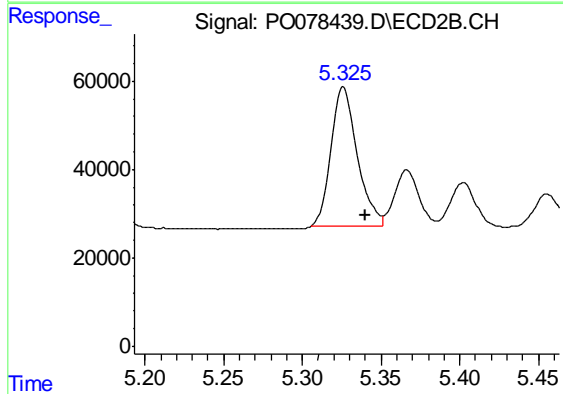
#14 AR-1232-4

R.T.: 5.145 min  
 Delta R.T.: -0.014 min  
 Response: 358600  
 Conc: 1131.99 ng/ml

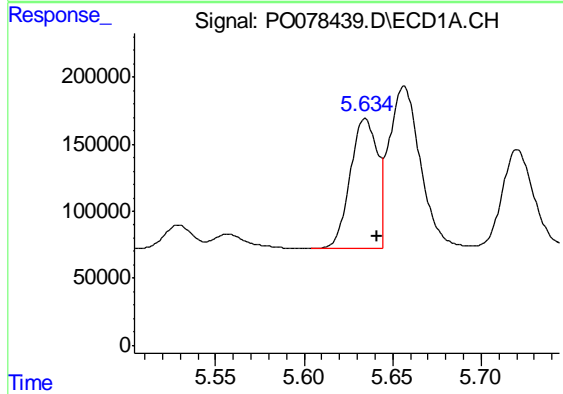


#15 AR-1232-5  
 R.T.: 5.925 min  
 Delta R.T.: -0.008 min  
 Response: 603611  
 Conc: 1229.36 ng/ml

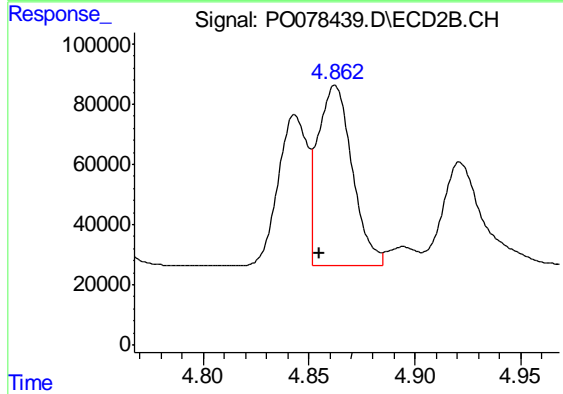
Instrument :  
 ECD\_O  
 ClientSampleId :  
 PB136820BS



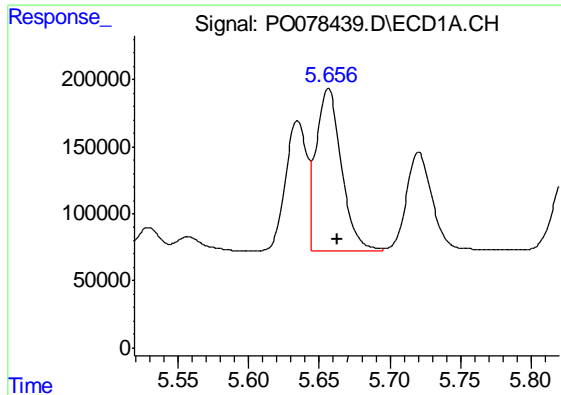
#15 AR-1232-5  
 R.T.: 5.326 min  
 Delta R.T.: -0.014 min  
 Response: 373661  
 Conc: 1073.92 ng/ml



#16 AR-1242-1  
 R.T.: 5.635 min  
 Delta R.T.: -0.006 min  
 Response: 1028937  
 Conc: 560.08 ng/ml



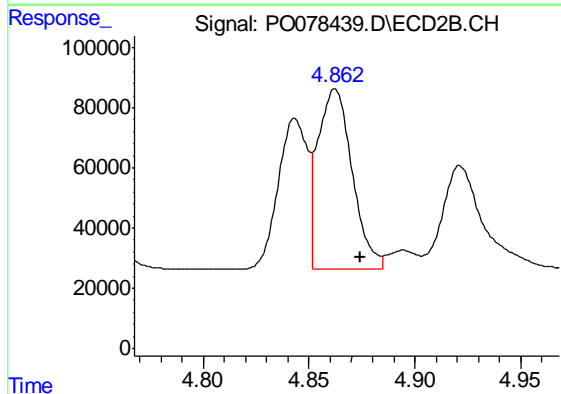
#16 AR-1242-1  
 R.T.: 4.862 min  
 Delta R.T.: 0.007 min  
 Response: 680637  
 Conc: 792.44 ng/ml



#17 AR-1242-2

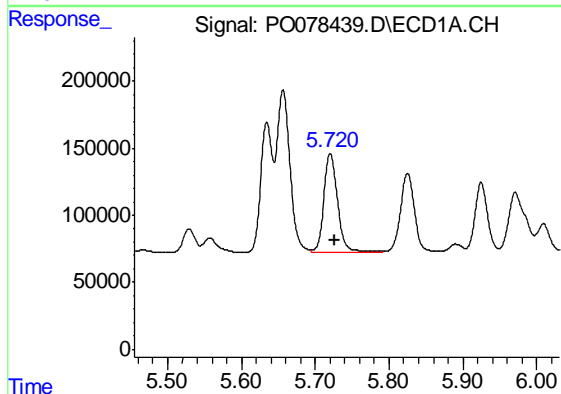
R.T.: 5.656 min  
 Delta R.T.: -0.006 min  
 Response: 1499815  
 Conc: 555.20 ng/ml

Instrument :  
 ECD\_O  
 ClientSampleId :  
 PB136820BS



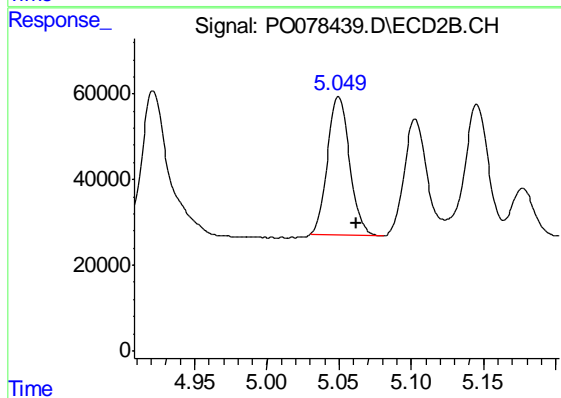
#17 AR-1242-2

R.T.: 4.862 min  
 Delta R.T.: -0.012 min  
 Response: 680637  
 Conc: 562.54 ng/ml



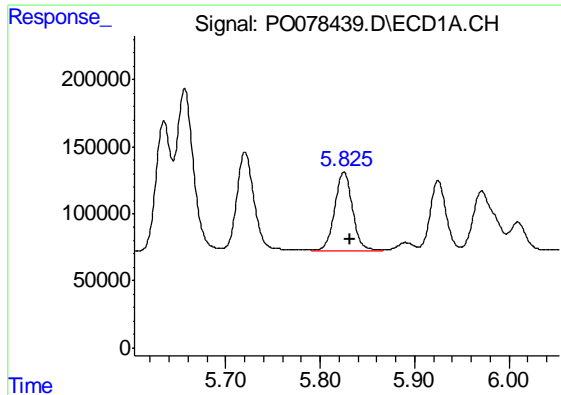
#18 AR-1242-3

R.T.: 5.720 min  
 Delta R.T.: -0.007 min  
 Response: 943209  
 Conc: 541.91 ng/ml



#18 AR-1242-3

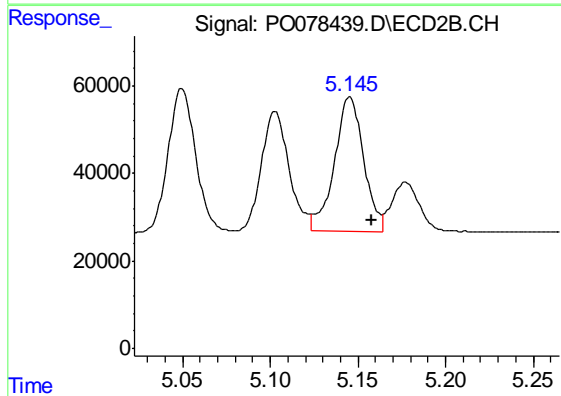
R.T.: 5.050 min  
 Delta R.T.: -0.012 min  
 Response: 343254  
 Conc: 532.79 ng/ml



#19 AR-1242-4

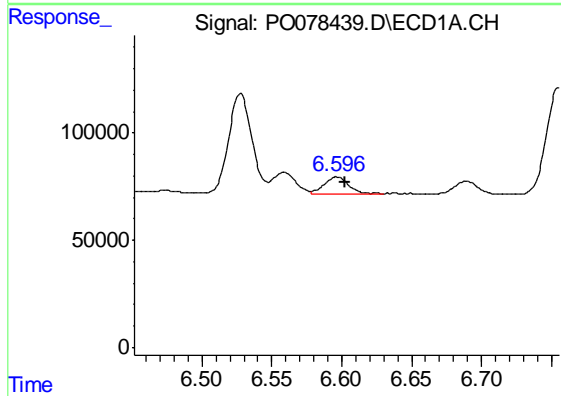
R.T.: 5.825 min  
 Delta R.T.: -0.006 min  
 Response: 763016  
 Conc: 545.79 ng/ml

Instrument :  
 ECD\_O  
 ClientSampleId :  
 PB136820BS



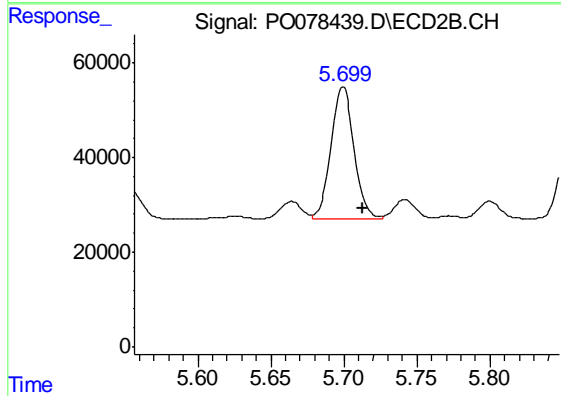
#19 AR-1242-4

R.T.: 5.145 min  
 Delta R.T.: -0.012 min  
 Response: 358600  
 Conc: 530.43 ng/ml



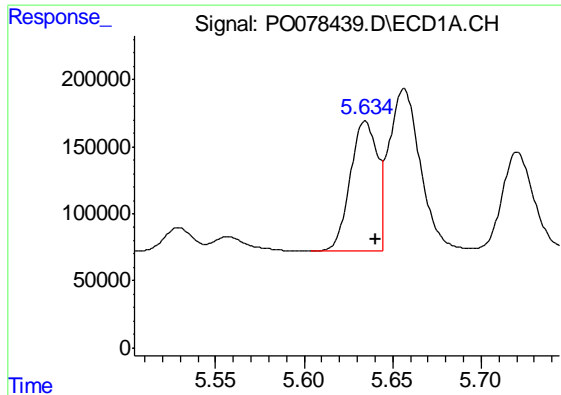
#20 AR-1242-5

R.T.: 6.597 min  
 Delta R.T.: -0.006 min  
 Response: 91754  
 Conc: 68.57 ng/ml



#20 AR-1242-5

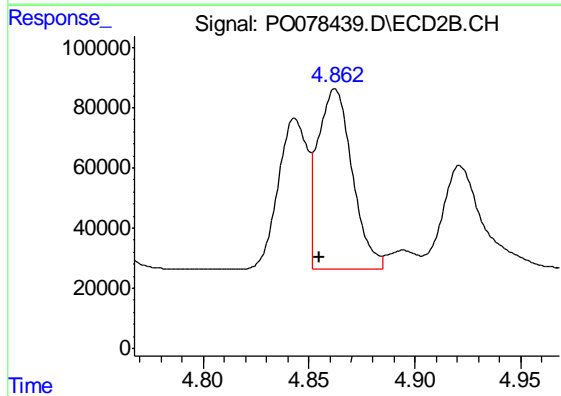
R.T.: 5.699 min  
 Delta R.T.: -0.014 min  
 Response: 307361  
 Conc: 374.83 ng/ml



#21 AR-1248-1

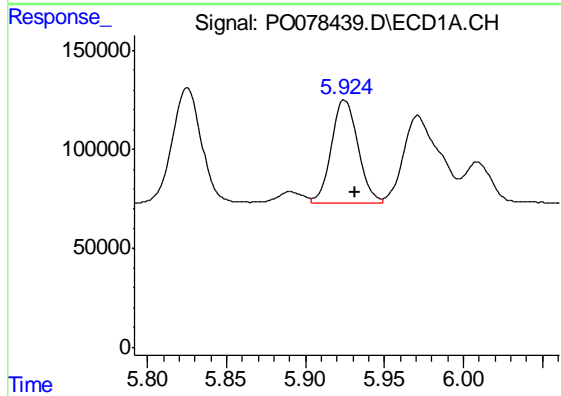
R.T.: 5.635 min  
 Delta R.T.: -0.006 min  
 Response: 1028937  
 Conc: 722.11 ng/ml

Instrument :  
 ECD\_O  
 ClientSampleId :  
 PB136820BS



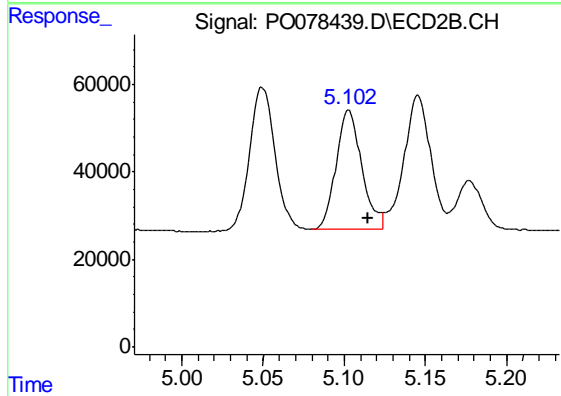
#21 AR-1248-1

R.T.: 4.862 min  
 Delta R.T.: 0.007 min  
 Response: 680637  
 Conc: 1056.16 ng/ml



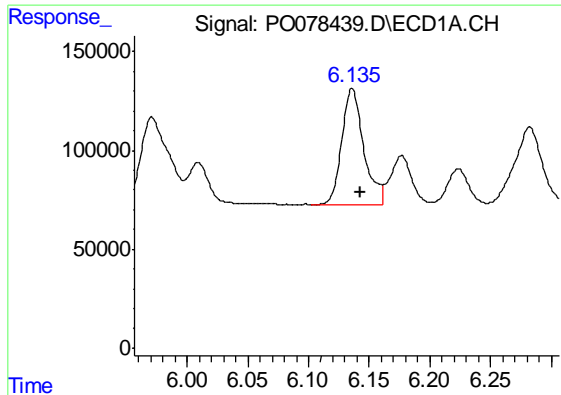
#22 AR-1248-2

R.T.: 5.925 min  
 Delta R.T.: -0.007 min  
 Response: 603611  
 Conc: 317.94 ng/ml



#22 AR-1248-2

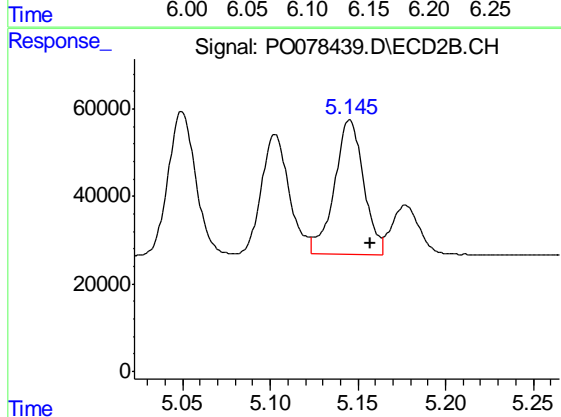
R.T.: 5.103 min  
 Delta R.T.: -0.012 min  
 Response: 301041  
 Conc: 314.91 ng/ml



#23 AR-1248-3

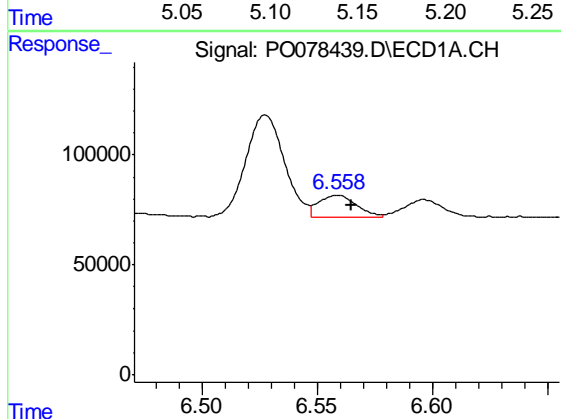
R.T.: 6.136 min  
 Delta R.T.: -0.007 min  
 Response: 733742  
 Conc: 330.81 ng/ml

Instrument :  
 ECD\_O  
 ClientSampleId :  
 PB136820BS



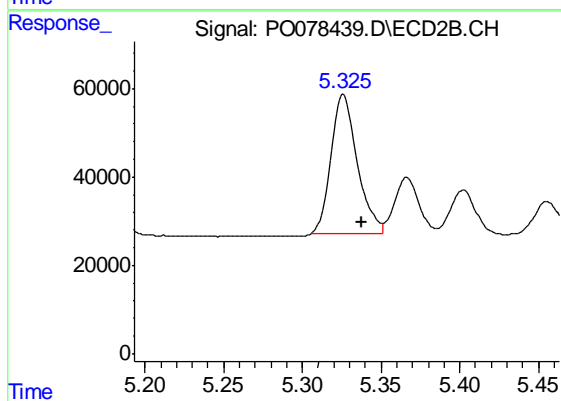
#23 AR-1248-3

R.T.: 5.145 min  
 Delta R.T.: -0.011 min  
 Response: 358600  
 Conc: 373.06 ng/ml



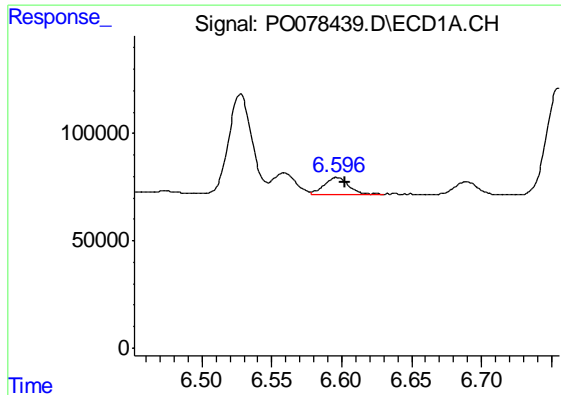
#24 AR-1248-4

R.T.: 6.559 min  
 Delta R.T.: -0.006 min  
 Response: 111445  
 Conc: 47.88 ng/ml



#24 AR-1248-4

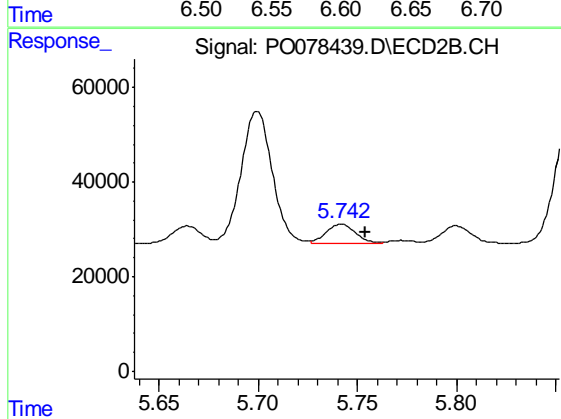
R.T.: 5.326 min  
 Delta R.T.: -0.012 min  
 Response: 373661  
 Conc: 326.27 ng/ml



#25 AR-1248-5

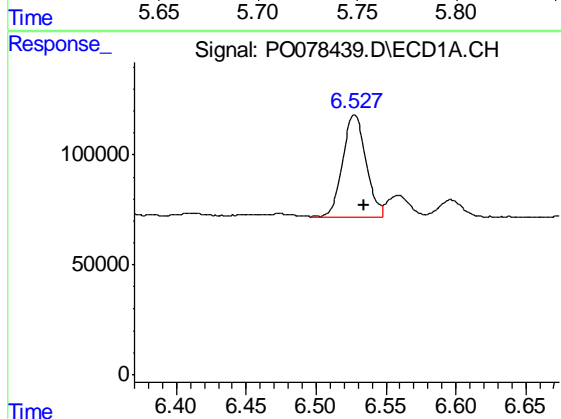
R.T.: 6.597 min  
 Delta R.T.: -0.006 min  
 Response: 91754  
 Conc: 40.55 ng/ml

Instrument :  
 ECD\_O  
 ClientSampleId :  
 PB136820BS



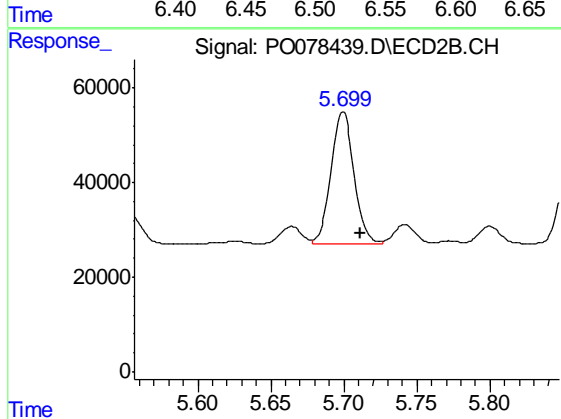
#25 AR-1248-5

R.T.: 5.742 min  
 Delta R.T.: -0.012 min  
 Response: 42500  
 Conc: 40.56 ng/ml



#26 AR-1254-1

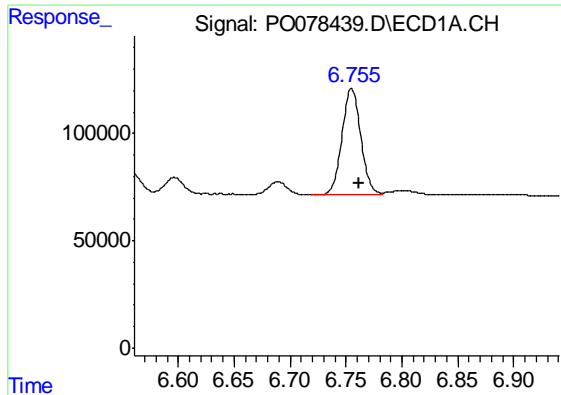
R.T.: 6.528 min  
 Delta R.T.: -0.007 min  
 Response: 538498  
 Conc: 216.96 ng/ml



#26 AR-1254-1

R.T.: 5.699 min  
 Delta R.T.: -0.012 min  
 Response: 307361  
 Conc: 178.22 ng/ml

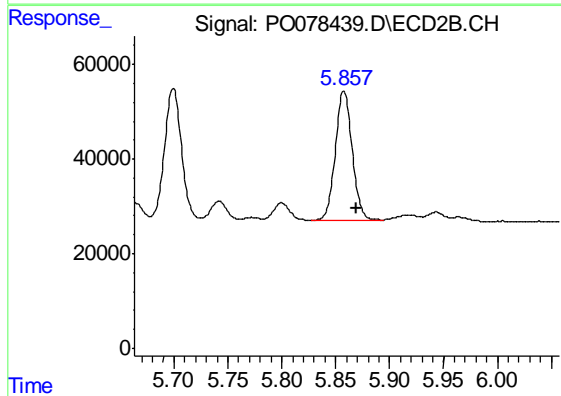




#27 AR-1254-2

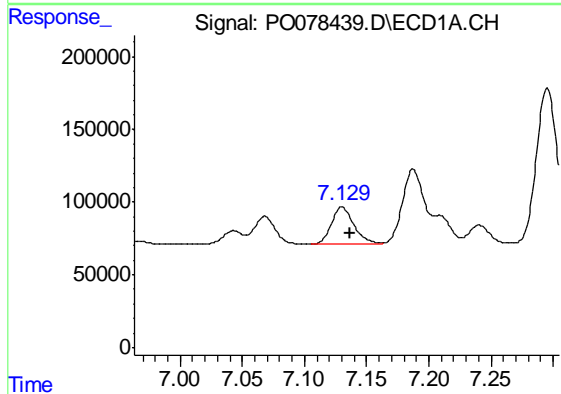
R.T.: 6.755 min  
 Delta R.T.: -0.007 min  
 Response: 584082  
 Conc: 150.52 ng/ml

Instrument :  
 ECD\_O  
 ClientSampleId :  
 PB136820BS



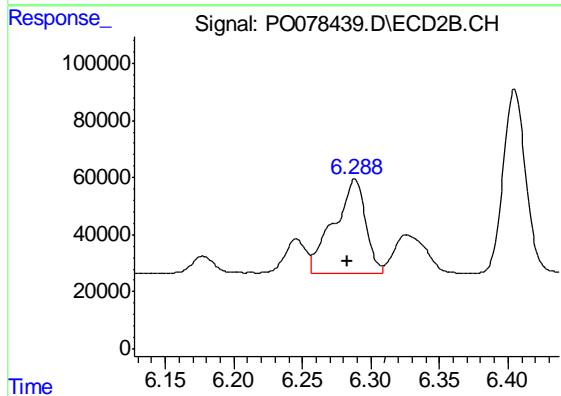
#27 AR-1254-2

R.T.: 5.858 min  
 Delta R.T.: -0.012 min  
 Response: 297566  
 Conc: 185.63 ng/ml



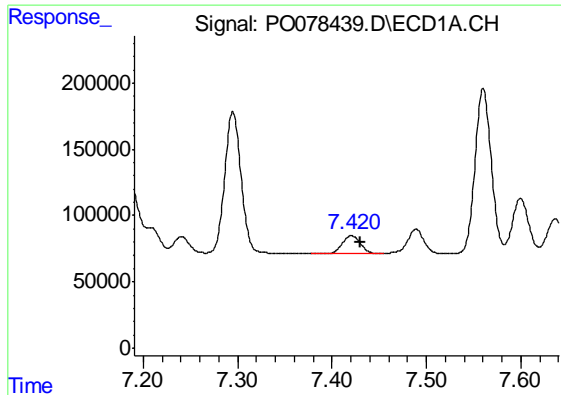
#28 AR-1254-3

R.T.: 7.130 min  
 Delta R.T.: -0.007 min  
 Response: 325306  
 Conc: 82.92 ng/ml



#28 AR-1254-3

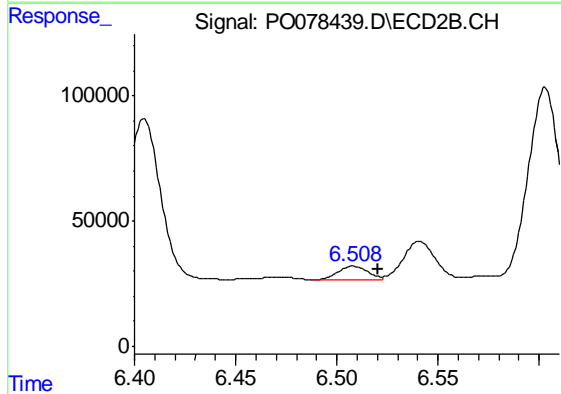
R.T.: 6.288 min  
 Delta R.T.: 0.005 min  
 Response: 526705  
 Conc: 220.68 ng/ml



#29 AR-1254-4

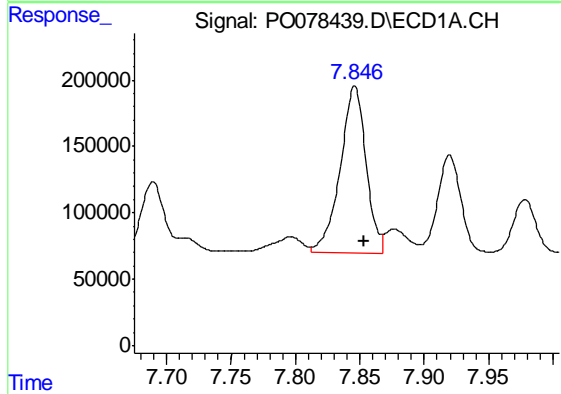
R.T.: 7.421 min  
 Delta R.T.: -0.009 min  
 Response: 186303  
 Conc: 68.60 ng/ml

Instrument :  
 ECD\_O  
 ClientSampleId :  
 PB136820BS



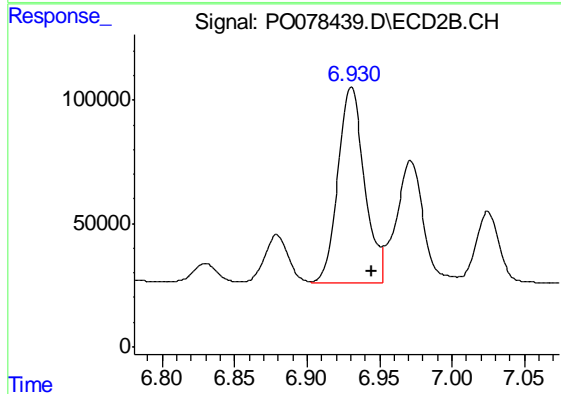
#29 AR-1254-4

R.T.: 6.508 min  
 Delta R.T.: -0.012 min  
 Response: 58592  
 Conc: 40.36 ng/ml



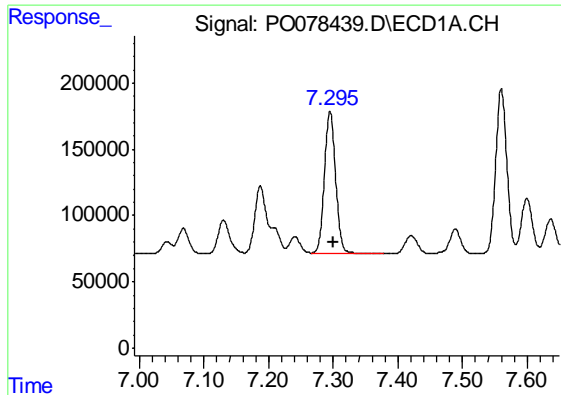
#30 AR-1254-5

R.T.: 7.846 min  
 Delta R.T.: -0.007 min  
 Response: 1755011  
 Conc: 600.11 ng/ml



#30 AR-1254-5

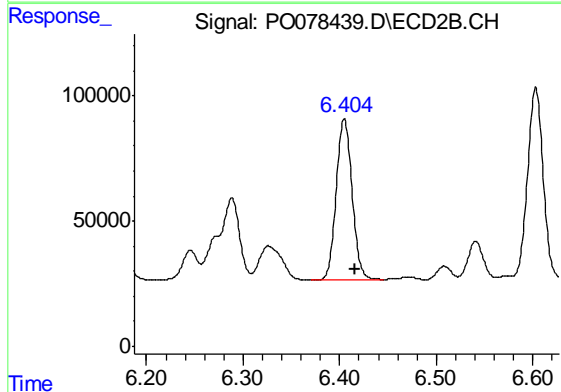
R.T.: 6.931 min  
 Delta R.T.: -0.014 min  
 Response: 1001739  
 Conc: 440.72 ng/ml



#31 AR-1260-1

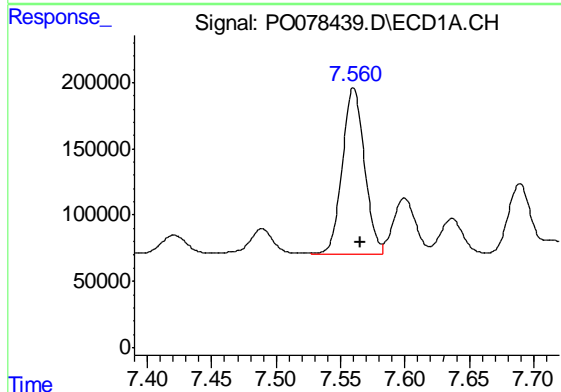
R.T.: 7.295 min  
 Delta R.T.: -0.006 min  
 Response: 1304684  
 Conc: 464.92 ng/ml

Instrument :  
 ECD\_O  
 ClientSampleId :  
 PB136820BS



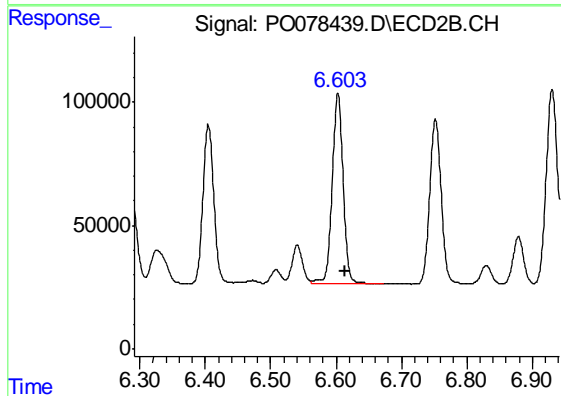
#31 AR-1260-1

R.T.: 6.405 min  
 Delta R.T.: -0.012 min  
 Response: 738900  
 Conc: 461.16 ng/ml



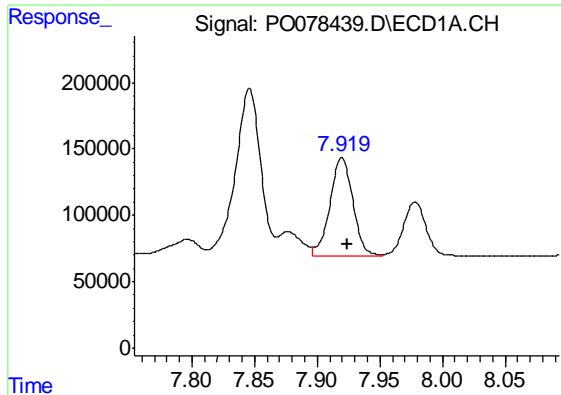
#32 AR-1260-2

R.T.: 7.560 min  
 Delta R.T.: -0.006 min  
 Response: 1501708  
 Conc: 446.39 ng/ml



#32 AR-1260-2

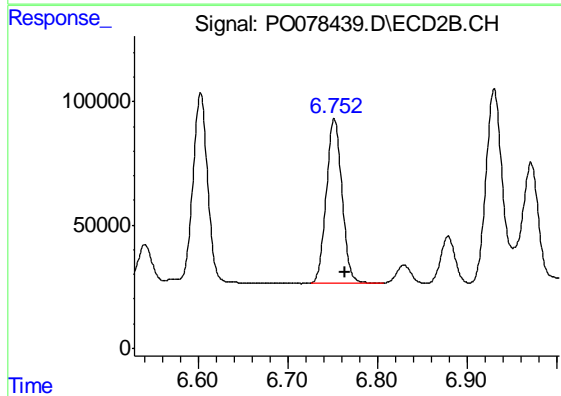
R.T.: 6.603 min  
 Delta R.T.: -0.010 min  
 Response: 890319  
 Conc: 461.17 ng/ml



#33 AR-1260-3

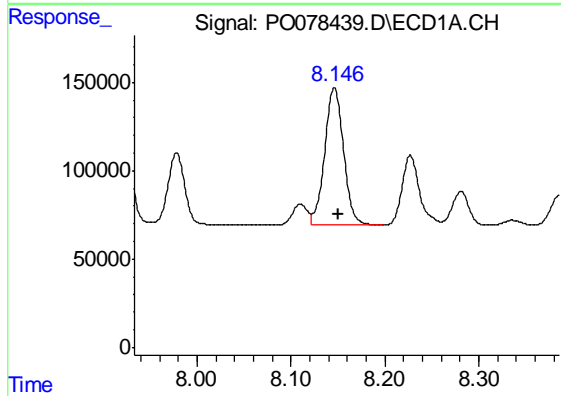
R.T.: 7.920 min  
 Delta R.T.: -0.005 min  
 Response: 937916  
 Conc: 384.39 ng/ml

Instrument :  
 ECD\_O  
 ClientSampleId :  
 PB136820BS



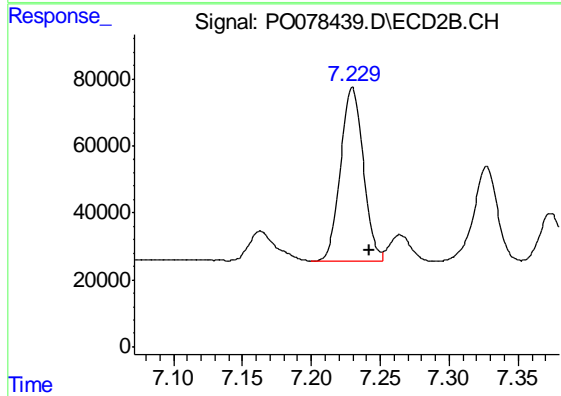
#33 AR-1260-3

R.T.: 6.752 min  
 Delta R.T.: -0.013 min  
 Response: 811572  
 Conc: 442.36 ng/ml



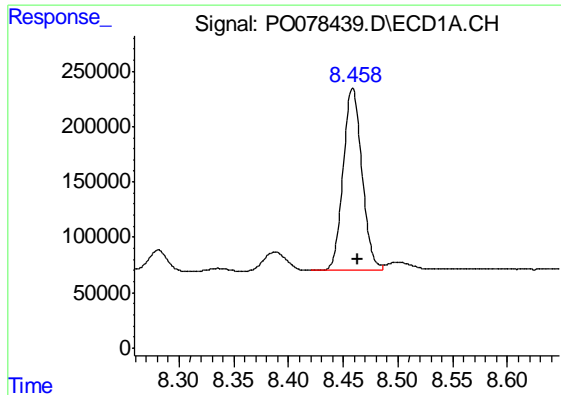
#34 AR-1260-4

R.T.: 8.146 min  
 Delta R.T.: -0.005 min  
 Response: 1085877  
 Conc: 405.37 ng/ml



#34 AR-1260-4

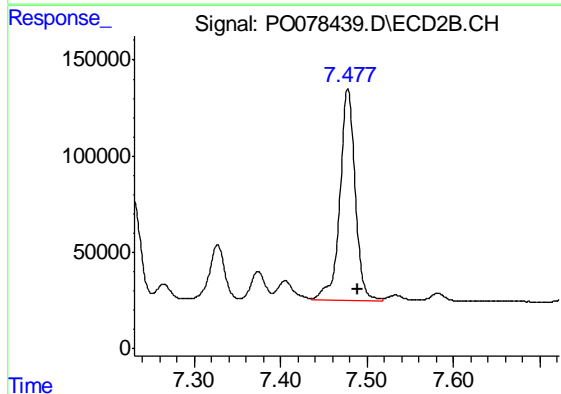
R.T.: 7.230 min  
 Delta R.T.: -0.012 min  
 Response: 600396  
 Conc: 398.29 ng/ml



#35 AR-1260-5

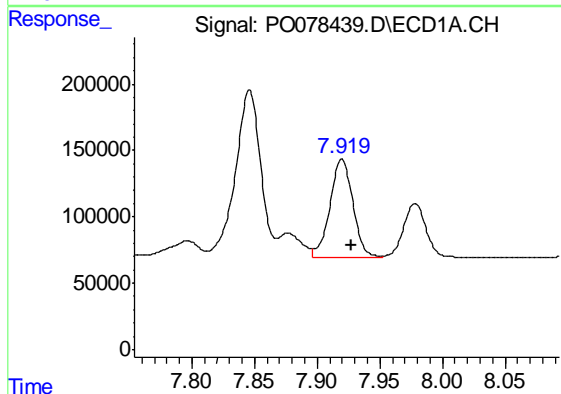
R.T.: 8.459 min  
 Delta R.T.: -0.005 min  
 Response: 1958853  
 Conc: 381.41 ng/ml

Instrument :  
 ECD\_O  
 ClientSampleId :  
 PB136820BS



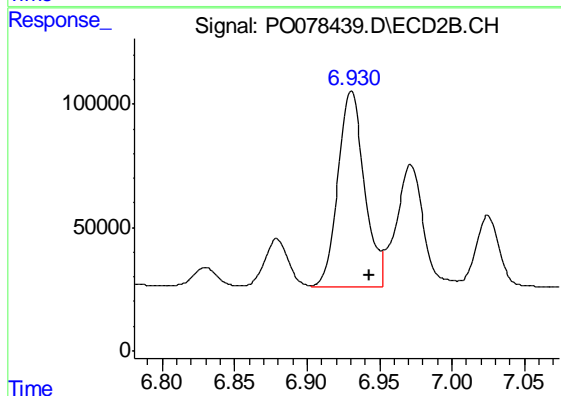
#35 AR-1260-5

R.T.: 7.478 min  
 Delta R.T.: -0.012 min  
 Response: 1361166  
 Conc: 390.33 ng/ml



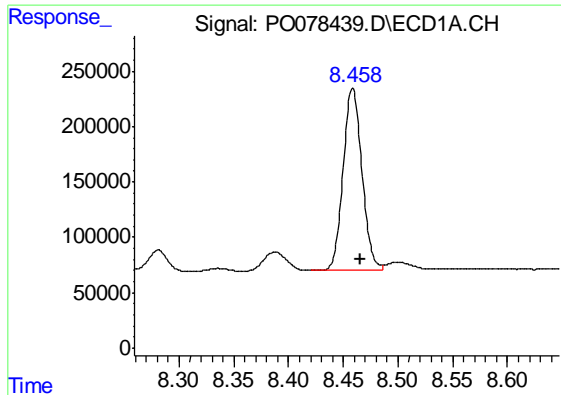
#36 AR-1262-1

R.T.: 7.920 min  
 Delta R.T.: -0.007 min  
 Response: 937916  
 Conc: 261.81 ng/ml



#36 AR-1262-1

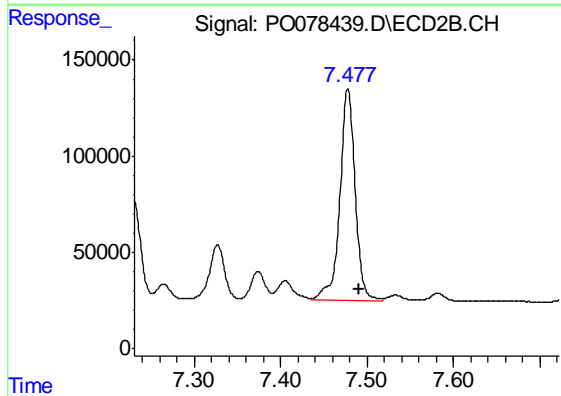
R.T.: 6.931 min  
 Delta R.T.: -0.013 min  
 Response: 1001739  
 Conc: 853.71 ng/ml



#37 AR-1262-2

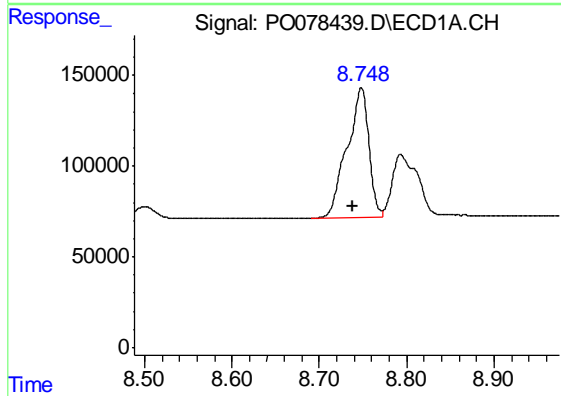
R.T.: 8.459 min  
 Delta R.T.: -0.007 min  
 Response: 1958853  
 Conc: 325.42 ng/ml

Instrument :  
 ECD\_O  
 ClientSampleId :  
 PB136820BS



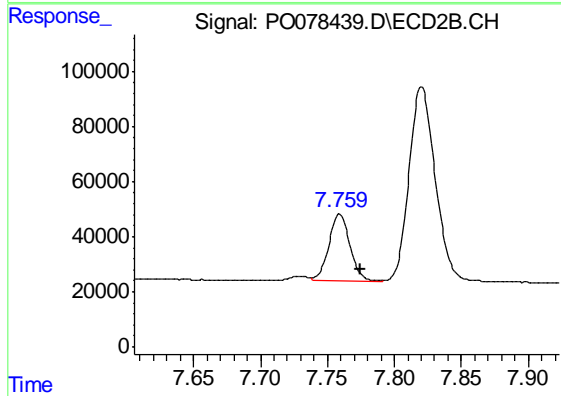
#37 AR-1262-2

R.T.: 7.478 min  
 Delta R.T.: -0.013 min  
 Response: 1361166  
 Conc: 348.93 ng/ml



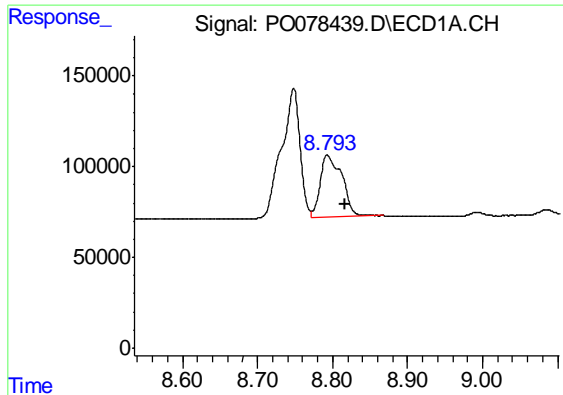
#38 AR-1262-3

R.T.: 8.748 min  
 Delta R.T.: 0.010 min  
 Response: 1235258  
 Conc: 305.85 ng/ml



#38 AR-1262-3

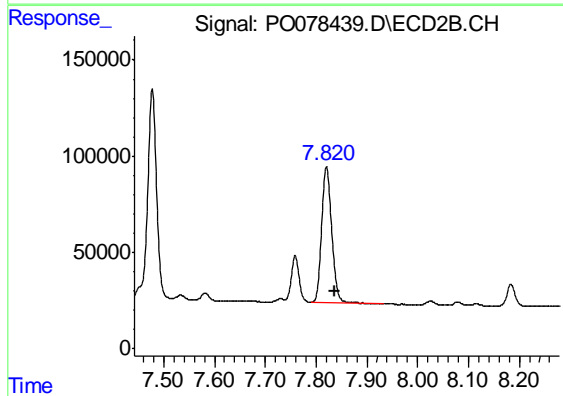
R.T.: 7.759 min  
 Delta R.T.: -0.015 min  
 Response: 270908  
 Conc: 168.34 ng/ml



#39 AR-1262-4

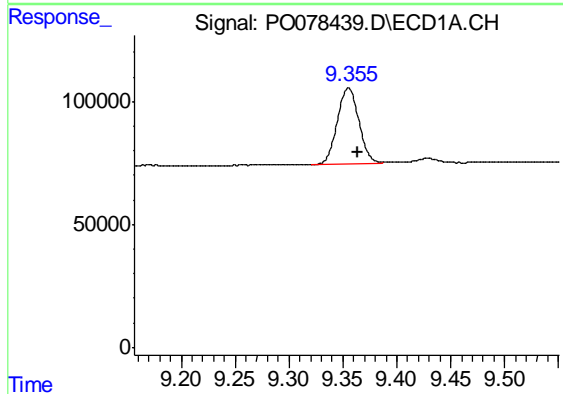
R.T.: 8.793 min  
Delta R.T.: -0.023 min  
Response: 680940  
Conc: 218.35 ng/ml

Instrument :  
ECD\_O  
ClientSampleId :  
PB136820BS



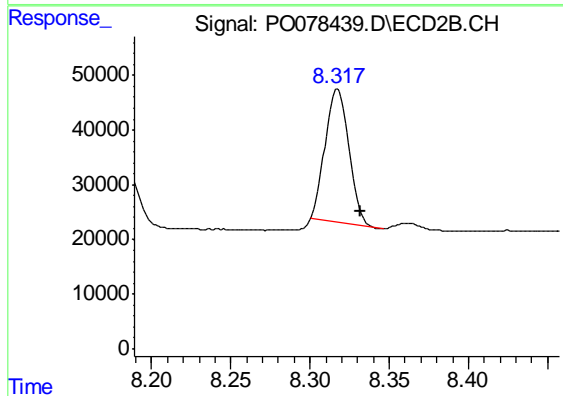
#39 AR-1262-4

R.T.: 7.820 min  
Delta R.T.: -0.016 min  
Response: 980263  
Conc: 326.88 ng/ml



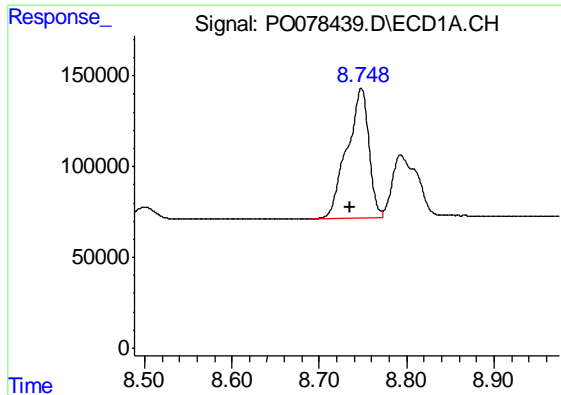
#40 AR-1262-5

R.T.: 9.355 min  
Delta R.T.: -0.009 min  
Response: 432022  
Conc: 208.49 ng/ml



#40 AR-1262-5

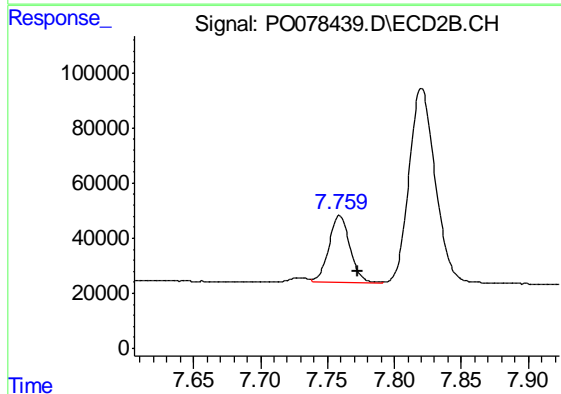
R.T.: 8.317 min  
Delta R.T.: -0.014 min  
Response: 255432  
Conc: 184.55 ng/ml



#41 AR-1268-1

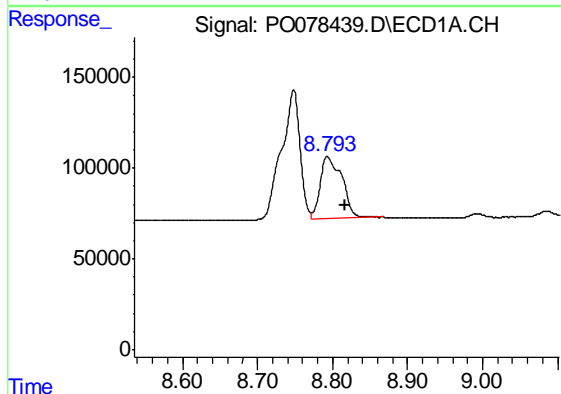
R.T.: 8.748 min  
 Delta R.T.: 0.013 min  
 Response: 1235258  
 Conc: 174.26 ng/ml

Instrument :  
 ECD\_O  
 ClientSampleId :  
 PB136820BS



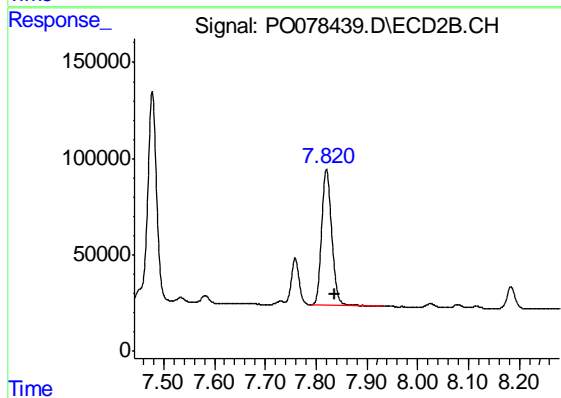
#41 AR-1268-1

R.T.: 7.759 min  
 Delta R.T.: -0.013 min  
 Response: 270908  
 Conc: 59.17 ng/ml



#42 AR-1268-2

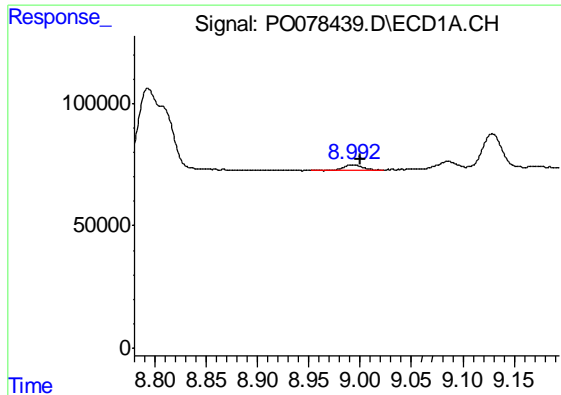
R.T.: 8.793 min  
 Delta R.T.: -0.024 min  
 Response: 680940  
 Conc: 105.23 ng/ml



#42 AR-1268-2

R.T.: 7.820 min  
 Delta R.T.: -0.017 min  
 Response: 980263  
 Conc: 236.92 ng/ml

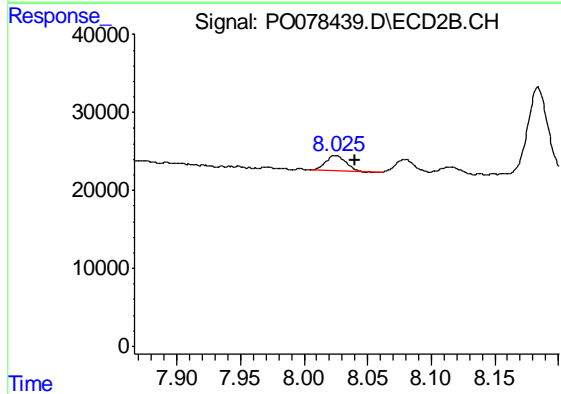




#43 AR-1268-3

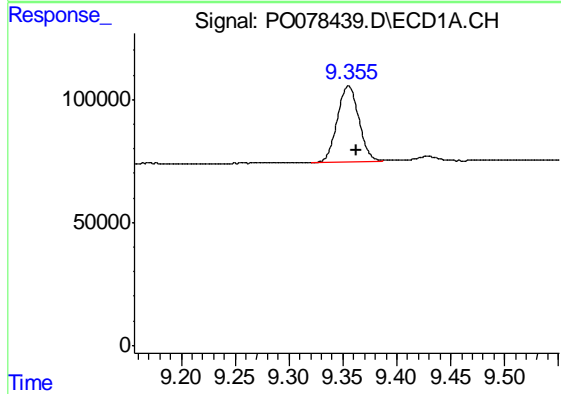
R.T.: 8.993 min  
 Delta R.T.: -0.007 min  
 Response: 30578  
 Conc: 5.62 ng/ml

Instrument :  
 ECD\_O  
 ClientSampleId :  
 PB136820BS



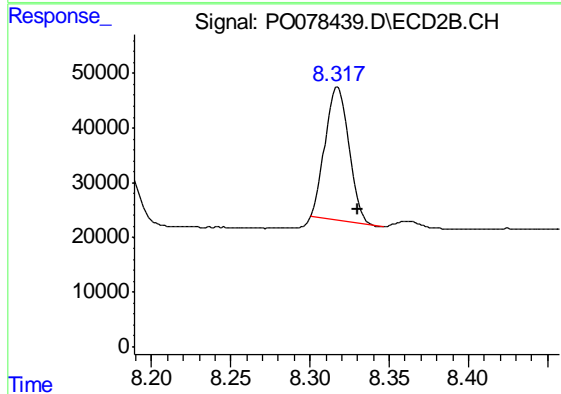
#43 AR-1268-3

R.T.: 8.025 min  
 Delta R.T.: -0.015 min  
 Response: 21417  
 Conc: 6.05 ng/ml



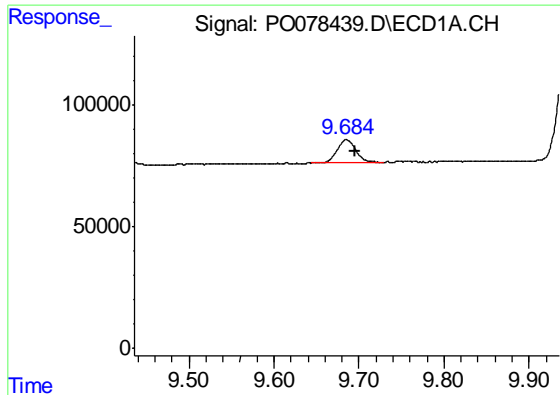
#44 AR-1268-4

R.T.: 9.355 min  
 Delta R.T.: -0.008 min  
 Response: 432022  
 Conc: 191.83 ng/ml



#44 AR-1268-4

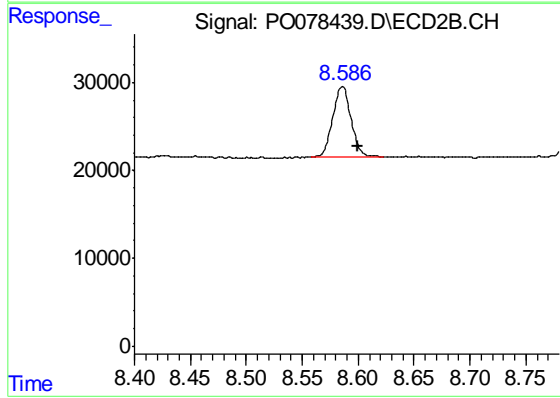
R.T.: 8.317 min  
 Delta R.T.: -0.013 min  
 Response: 255432  
 Conc: 168.83 ng/ml



#45 AR-1268-5

R.T.: 9.685 min  
Delta R.T.: -0.011 min  
Response: 143750  
Conc: 8.22 ng/ml

Instrument :  
ECD\_O  
ClientSampleId :  
PB136820BS



#45 AR-1268-5

R.T.: 8.586 min  
Delta R.T.: -0.014 min  
Response: 92155  
Conc: 8.75 ng/ml