

Data Path : Z:\pestpcbsrv\HPCHEM1\ECD_O\Data\P0060425\
 Data File : PO111461.D
 Signal(s) : Signal #1: ECD1A.ch Signal #2: ECD2B.ch
 Acq On : 04 Jun 2025 11:26
 Operator : YP/AJ
 Sample : Q2176-03
 Misc :
 ALS Vial : 10 Sample Multiplier: 1

Instrument :
 ECD_O
 ClientSampleId :
 TP-25

Integration File signal 1: autoint1.e
 Integration File signal 2: autoint2.e
 Quant Time: Jun 04 14:50:42 2025
 Quant Method : Z:\pestpcbsrv\HPCHEM1\ECD_O\methods\P0051525.M
 Quant Title : GC EXTRACTABLES
 QLast Update : Thu May 15 07:11:53 2025
 Response via : Initial Calibration
 Integrator: ChemStation

Volume Inj. : 2 µl
 Signal #1 Phase : ZB-MR1 Signal #2 Phase: ZB-MR2
 Signal #1 Info : 30Mx0.32mmx 0.50µ Signal #2 Info : 30M x 0.32mm x 0.25µm

Compound	RT#1	RT#2	Resp#1	Resp#2	ng/ml	ng/ml

System Monitoring Compounds						
1) SA Tetrachlo...	3.679	3.675	131.2E6	112.0E6	22.305	20.550
2) SA Decachlor...	8.715	8.665	81801391	28453254	15.844	15.379
Target Compounds						
3) L1 AR-1016-1	4.793	4.770	2170037	1768897	9.642	9.265
4) L1 AR-1016-2	4.793	4.770	2170037	1768897	6.804	6.383
5) L1 AR-1016-3	4.844	4.951	1812891	380129	8.350	2.602 #
6) L1 AR-1016-4	4.975	4.981	2909721	571203	16.708	4.757 #
7) L1 AR-1016-5	5.214	5.195	7930222	2944368	45.060	19.070 #
8) L2 AR-1221-1	3.904	3.876	325254	907900	3.734	12.295 #
9) L2 AR-1221-2	3.961	3.954	15273162	10195383	239.753	187.366
10) L2 AR-1221-3	4.054	4.052	1102012	338829	5.730	2.028 #
11) L3 AR-1232-1	4.054	4.052	1102012	338829	7.195	2.594 #
12) L3 AR-1232-2	4.557	4.770	1175345	1768897	14.343	13.487
13) L3 AR-1232-3	4.793	4.951	2170037	380129	14.190	5.584 #
14) L3 AR-1232-4	4.975	5.040	2909721	133160	35.376	2.159 #
15) L3 AR-1232-5	5.004	5.195	2885559	2944368	53.181	44.793
16) L4 AR-1242-1	4.793	4.770	2170037	1768897	11.350	10.980
17) L4 AR-1242-2	4.793	4.770	2170037	1768897	7.978	7.540
18) L4 AR-1242-3	4.844	4.951	1812891	380129	9.747	3.075 #
19) L4 AR-1242-4	4.975	5.040	2909721	133160	19.687	1.077 #
20) L4 AR-1242-5	5.624	5.551	10496654	6457993	67.484	42.491 #
21) L5 AR-1248-1	4.793	4.770	2170037	1768897	14.168	13.635
22) L5 AR-1248-2	5.004	4.981	2885559	571203	14.391	3.247 #
23) L5 AR-1248-3	5.214	5.040	7930222	133160	30.977	0.710 #
24) L5 AR-1248-4	5.574	5.195	14170972	2944368	39.127	13.393 #
25) L5 AR-1248-5	5.624	5.597	10496654	2786876	40.055	12.765 #
26) L6 AR-1254-1	5.574	5.551	14170972	6457993	37.334	19.930 #
27) L6 AR-1254-2	5.724	5.699	9609965	3614768	29.408	12.762 #
28) L6 AR-1254-3	6.145	6.118	14093678	7076721	26.787	16.402 #
29) L6 AR-1254-4	6.351	6.329	2133503	1338327	6.348	5.411
30) L6 AR-1254-5	6.775	6.744	7599721	5459687	16.018	15.782
31) L7 AR-1260-1	6.259	6.231	11387090	6157043	37.339	24.639 #
32) L7 AR-1260-2	6.448	6.419	7787130	5087308	20.335	17.287
33) L7 AR-1260-3	6.815	6.571	5412703	4958597	15.527	17.294
34) L7 AR-1260-4	7.074	7.041	5424502	3671202	19.376	18.286
35) L7 AR-1260-5	7.317	7.282	12110747	6162364	16.823	13.408
36) L8 AR-1262-1	6.815	6.783	5412703	3462944	11.122	10.162
37) L8 AR-1262-2	7.317	7.282	12110747	6162364	14.979	12.255
38) L8 AR-1262-3	7.601	7.566	2990410	1741986	8.840	9.284
39) L8 AR-1262-4	7.663	7.627	7849696	4616652	13.295	13.980
40) L8 AR-1262-5	8.162	8.121	2871239	779693	10.067	6.943 #
41) L9 AR-1268-1	7.601	7.566	2990410	1741986	3.084	3.286

Data Path : Z:\pestpcbsrv\HPCHEM1\ECD_0\Data\P0060425\
 Data File : P0111461.D
 Signal(s) : Signal #1: ECD1A.ch Signal #2: ECD2B.ch
 Acq On : 04 Jun 2025 11:26
 Operator : YP/AJ
 Sample : Q2176-03
 Misc :
 ALS Vial : 10 Sample Multiplier: 1

Instrument :
 ECD_0
 ClientSampleId :
 TP-25

Integration File signal 1: autoint1.e
 Integration File signal 2: autoint2.e
 Quant Time: Jun 04 14:50:42 2025
 Quant Method : Z:\pestpcbsrv\HPCHEM1\ECD_0\methods\P0051525.M
 Quant Title : GC EXTRACTABLES
 QLast Update : Thu May 15 07:11:53 2025
 Response via : Initial Calibration
 Integrator: ChemStation

Volume Inj. : 2 µl
 Signal #1 Phase : ZB-MR1 Signal #2 Phase: ZB-MR2
 Signal #1 Info : 30Mx0.32mmx 0.50µ Signal #2 Info : 30M x 0.32mm x 0.25µm

	Compound	RT#1	RT#2	Resp#1	Resp#2	ng/ml	ng/ml
42)	L9 AR-1268-2	7.663	7.627	7849696	4616652	8.795	9.571
43)	L9 AR-1268-3	7.875	7.839	573058	433829	0.755	1.245 #
44)	L9 AR-1268-4	8.162	8.121	2871239	779693	8.792	6.126 #
45)	L9 AR-1268-5	8.458	8.411	1517823	486063	0.703	0.646

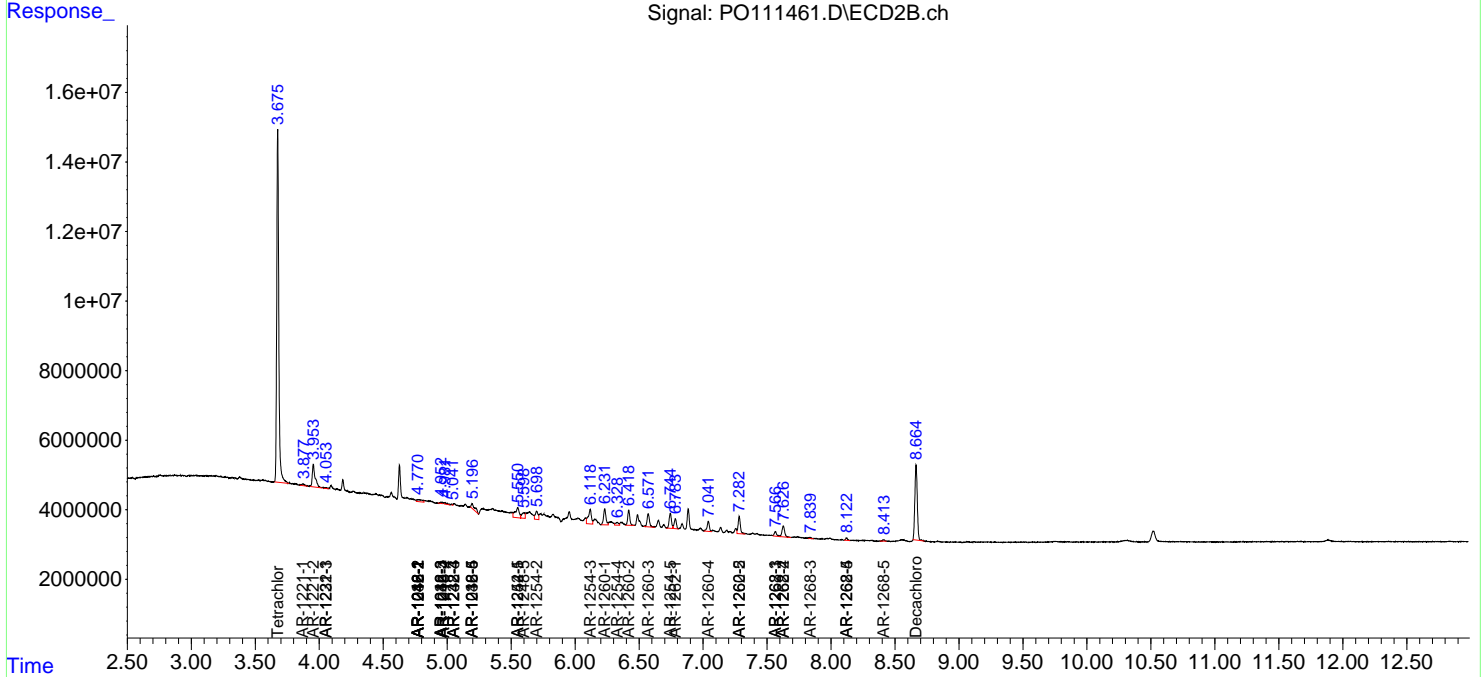
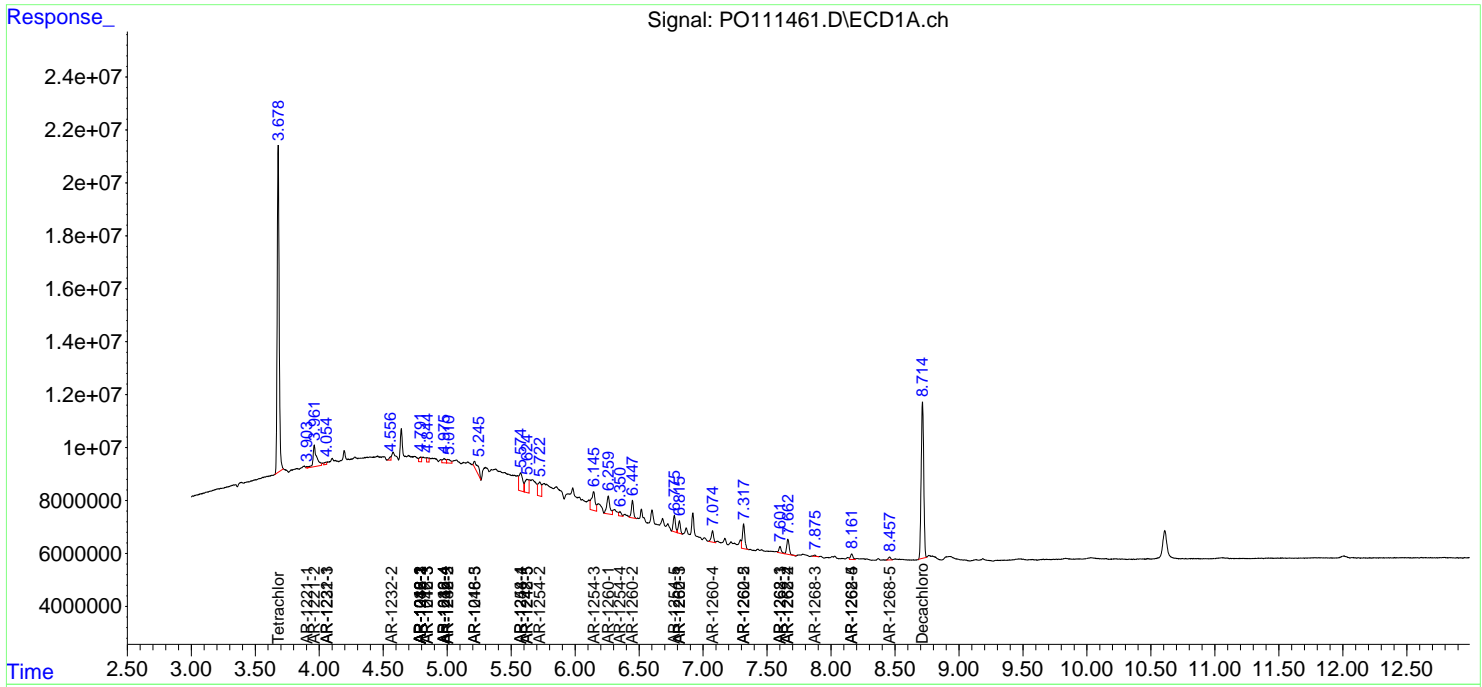
(f)=RT Delta > 1/2 Window (#)=Amounts differ by > 25% (m)=manual int.

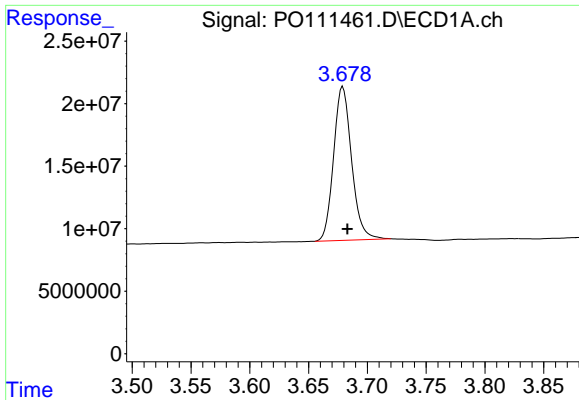
Data Path : Z:\pestpcbsrv\HPCHEM1\ECD_O\Data\PO060425\
 Data File : PO111461.D
 Signal(s) : Signal #1: ECD1A.ch Signal #2: ECD2B.ch
 Acq On : 04 Jun 2025 11:26
 Operator : YP/AJ
 Sample : Q2176-03
 Misc :
 ALS Vial : 10 Sample Multiplier: 1

Instrument :
 ECD_O
 ClientSampleId :
 TP-25

Integration File signal 1: autoint1.e
 Integration File signal 2: autoint2.e
 Quant Time: Jun 04 14:50:42 2025
 Quant Method : Z:\pestpcbsrv\HPCHEM1\ECD_O\methods\PO051525.M
 Quant Title : GC EXTRACTABLES
 QLast Update : Thu May 15 07:11:53 2025
 Response via : Initial Calibration
 Integrator: ChemStation

Volume Inj. : 2 µl
 Signal #1 Phase : ZB-MR1 Signal #2 Phase: ZB-MR2
 Signal #1 Info : 30Mx0.32mmx 0.50µ Signal #2 Info : 30M x 0.32mm x 0.25µm

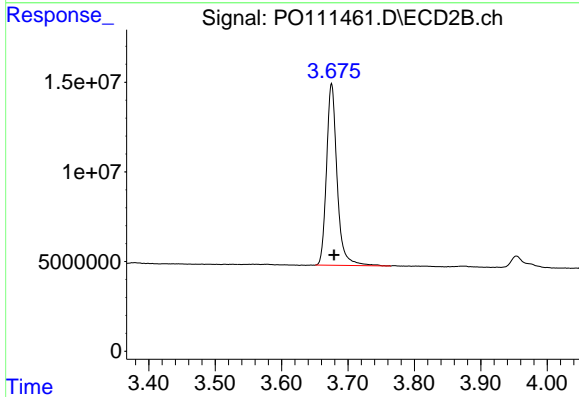




#1 Tetrachloro-m-xylene

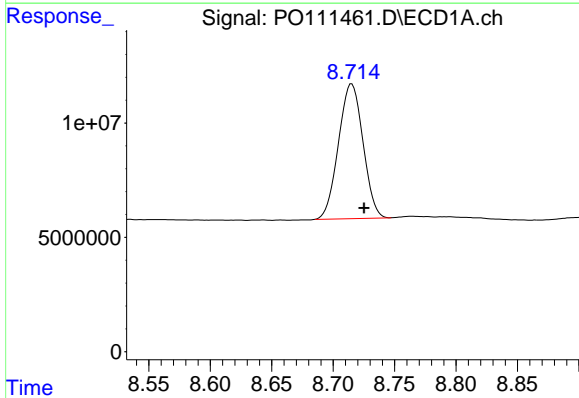
R.T.: 3.679 min
 Delta R.T.: -0.004 min
 Response: 131227399
 Conc: 22.31 ng/ml

Instrument :
 ECD_O
 ClientSampleId :
 TP-25



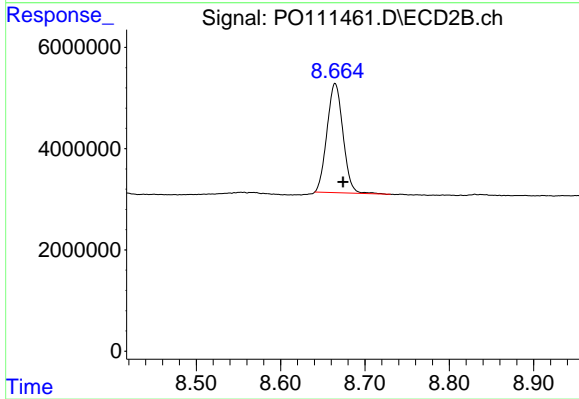
#1 Tetrachloro-m-xylene

R.T.: 3.675 min
 Delta R.T.: -0.004 min
 Response: 112029644
 Conc: 20.55 ng/ml



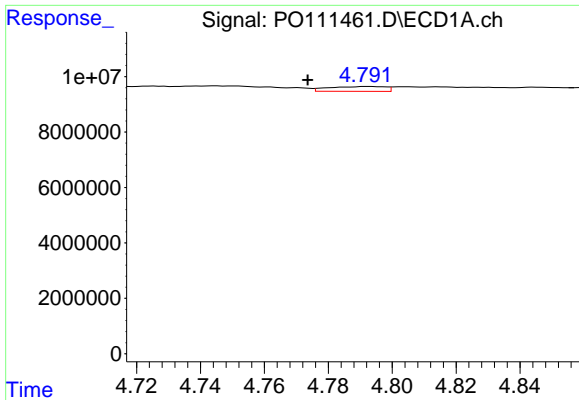
#2 Decachlorobiphenyl

R.T.: 8.715 min
 Delta R.T.: -0.010 min
 Response: 81801391
 Conc: 15.84 ng/ml



#2 Decachlorobiphenyl

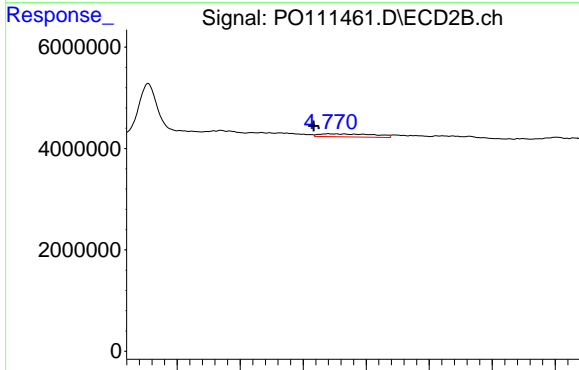
R.T.: 8.665 min
 Delta R.T.: -0.009 min
 Response: 28453254
 Conc: 15.38 ng/ml



#3 AR-1016-1

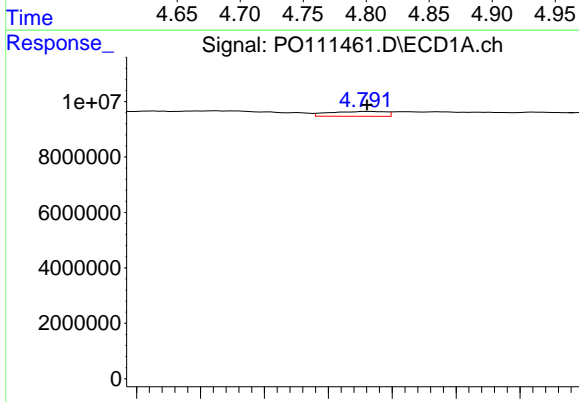
R.T.: 4.793 min
 Delta R.T.: 0.019 min
 Response: 2170037
 Conc: 9.64 ng/ml

Instrument :
 ECD_O
 ClientSampleId :
 TP-25



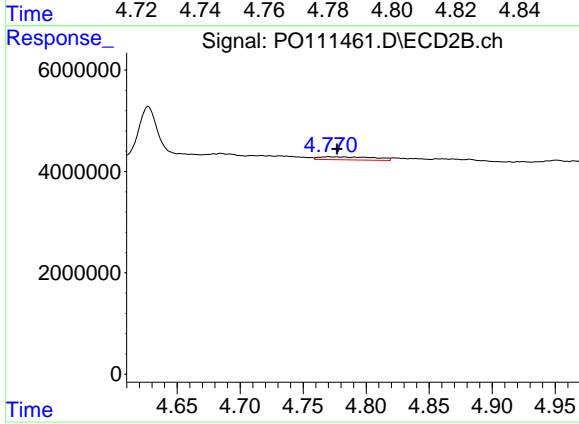
#3 AR-1016-1

R.T.: 4.770 min
 Delta R.T.: 0.012 min
 Response: 1768897
 Conc: 9.26 ng/ml



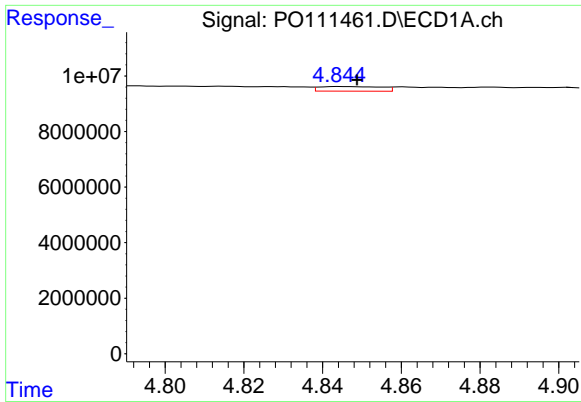
#4 AR-1016-2

R.T.: 4.793 min
 Delta R.T.: 0.000 min
 Response: 2170037
 Conc: 6.80 ng/ml



#4 AR-1016-2

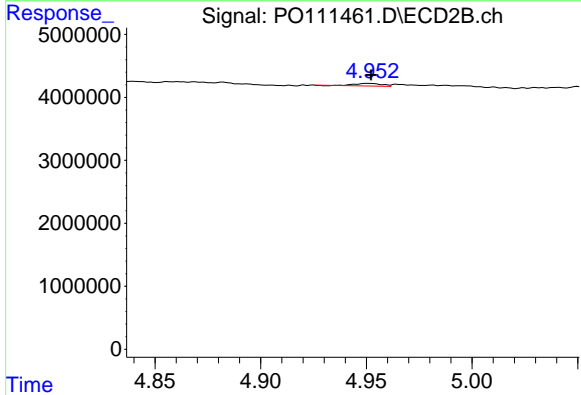
R.T.: 4.770 min
 Delta R.T.: -0.007 min
 Response: 1768897
 Conc: 6.38 ng/ml



#5 AR-1016-3

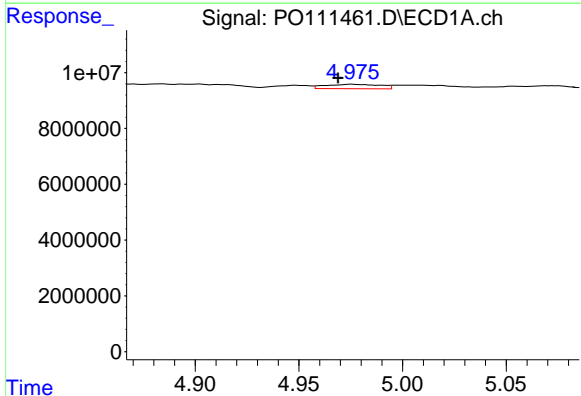
R.T.: 4.844 min
 Delta R.T.: -0.004 min
 Response: 1812891
 Conc: 8.35 ng/ml

Instrument :
 ECD_O
 ClientSampleId :
 TP-25



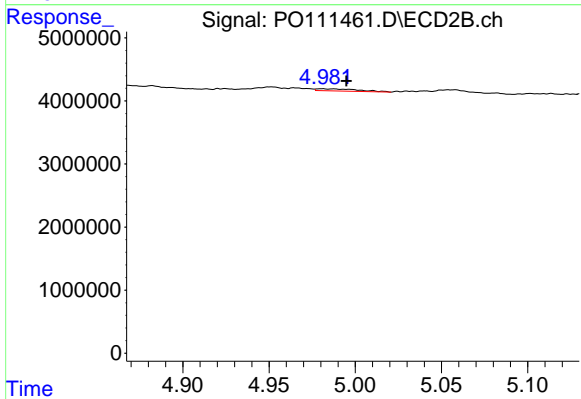
#5 AR-1016-3

R.T.: 4.951 min
 Delta R.T.: -0.001 min
 Response: 380129
 Conc: 2.60 ng/ml



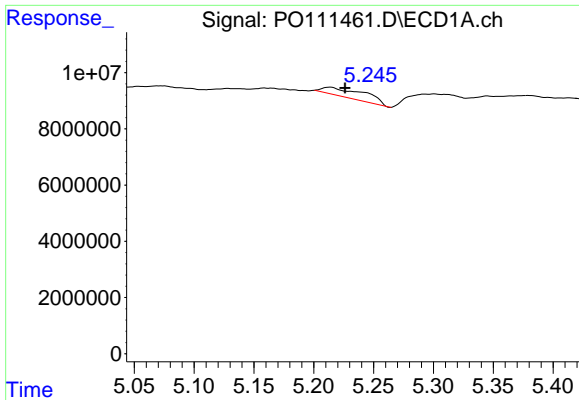
#6 AR-1016-4

R.T.: 4.975 min
 Delta R.T.: 0.006 min
 Response: 2909721
 Conc: 16.71 ng/ml



#6 AR-1016-4

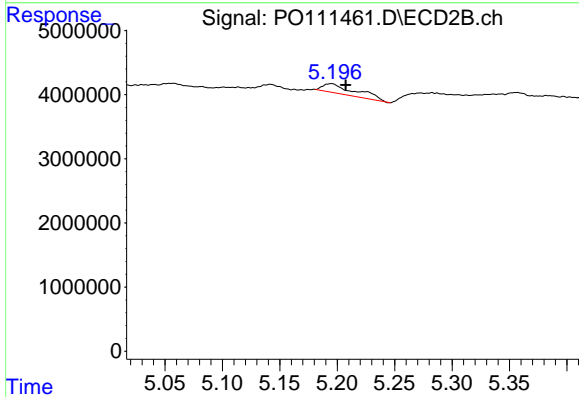
R.T.: 4.981 min
 Delta R.T.: -0.014 min
 Response: 571203
 Conc: 4.76 ng/ml



#7 AR-1016-5

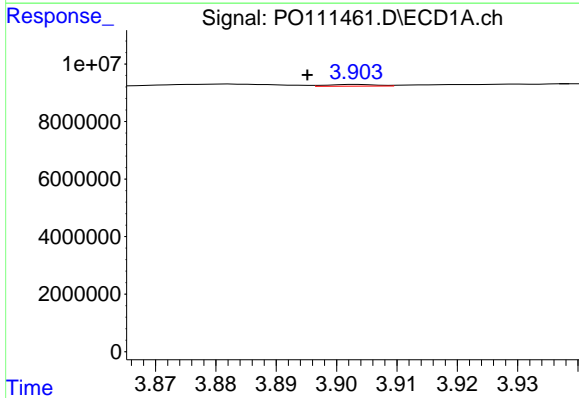
R.T.: 5.214 min
 Delta R.T.: -0.012 min
 Response: 7930222
 Conc: 45.06 ng/ml

Instrument :
 ECD_O
 ClientSampleId :
 TP-25



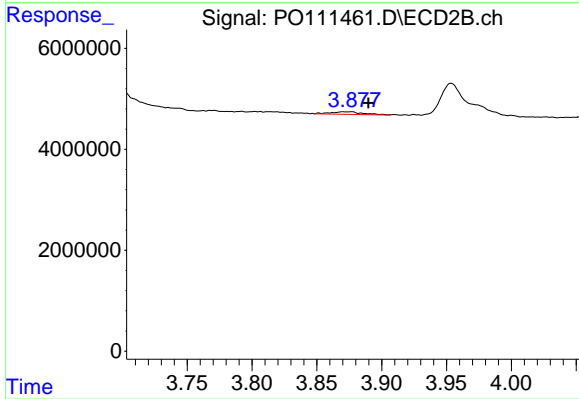
#7 AR-1016-5

R.T.: 5.195 min
 Delta R.T.: -0.012 min
 Response: 2944368
 Conc: 19.07 ng/ml



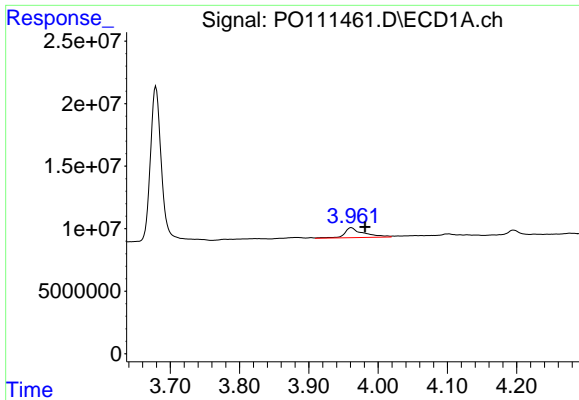
#8 AR-1221-1

R.T.: 3.904 min
 Delta R.T.: 0.008 min
 Response: 325254
 Conc: 3.73 ng/ml



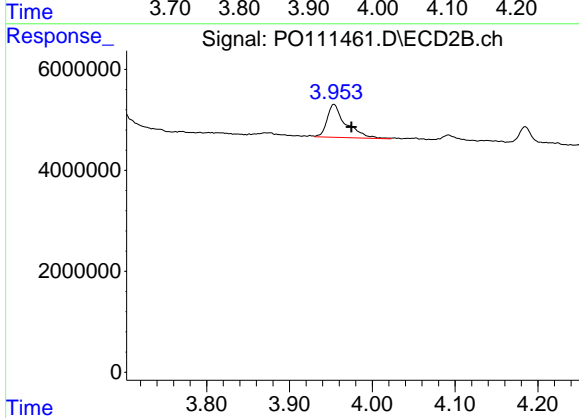
#8 AR-1221-1

R.T.: 3.876 min
 Delta R.T.: -0.013 min
 Response: 907900
 Conc: 12.30 ng/ml

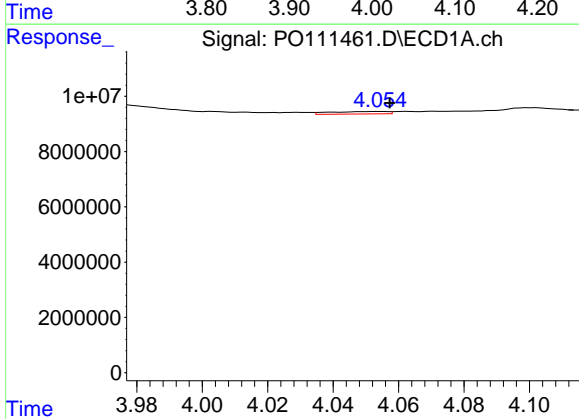


#9 AR-1221-2
 R.T.: 3.961 min
 Delta R.T.: -0.020 min
 Response: 15273162
 Conc: 239.75 ng/ml

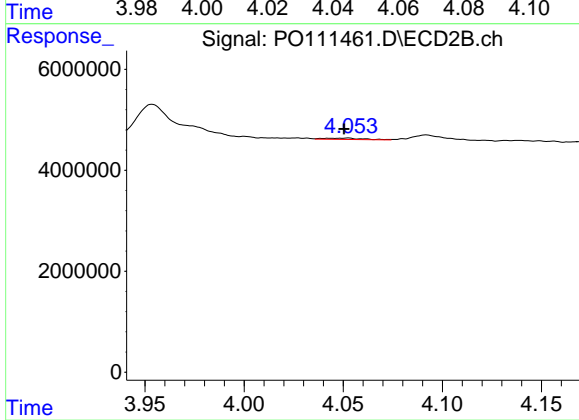
Instrument :
 ECD_O
 ClientSampleId :
 TP-25



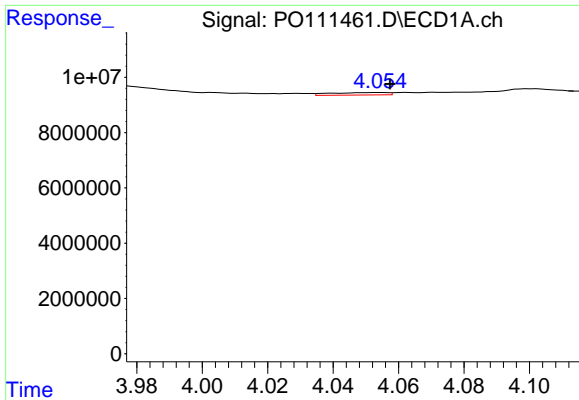
#9 AR-1221-2
 R.T.: 3.954 min
 Delta R.T.: -0.021 min
 Response: 10195383
 Conc: 187.37 ng/ml



#10 AR-1221-3
 R.T.: 4.054 min
 Delta R.T.: -0.003 min
 Response: 1102012
 Conc: 5.73 ng/ml



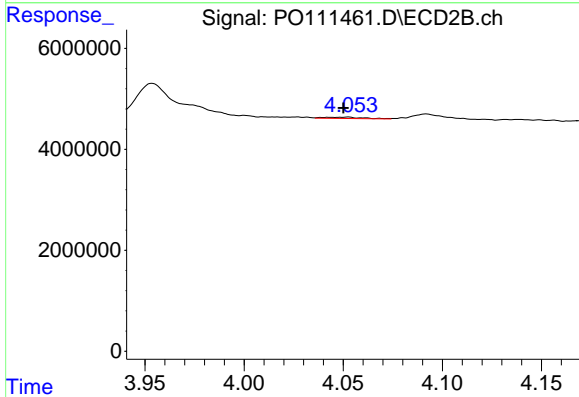
#10 AR-1221-3
 R.T.: 4.052 min
 Delta R.T.: 0.002 min
 Response: 338829
 Conc: 2.03 ng/ml



#11 AR-1232-1

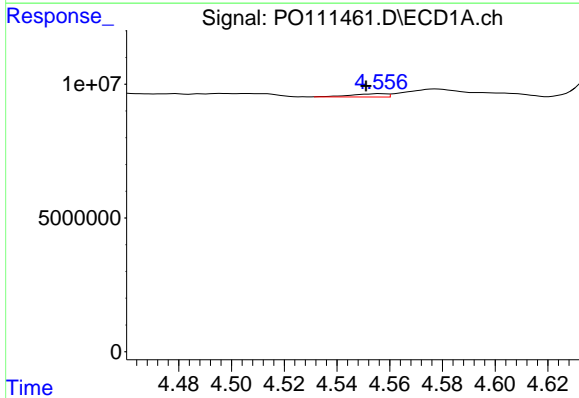
R.T.: 4.054 min
 Delta R.T.: -0.003 min
 Response: 1102012
 Conc: 7.19 ng/ml

Instrument :
 ECD_O
 ClientSampleId :
 TP-25



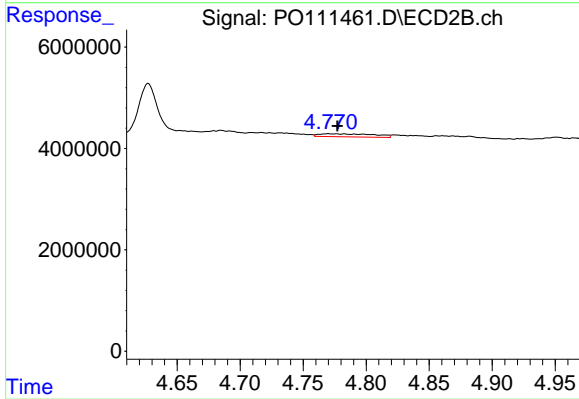
#11 AR-1232-1

R.T.: 4.052 min
 Delta R.T.: 0.002 min
 Response: 338829
 Conc: 2.59 ng/ml



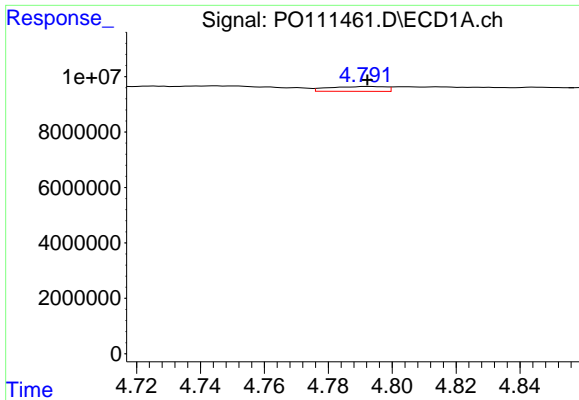
#12 AR-1232-2

R.T.: 4.557 min
 Delta R.T.: 0.006 min
 Response: 1175345
 Conc: 14.34 ng/ml



#12 AR-1232-2

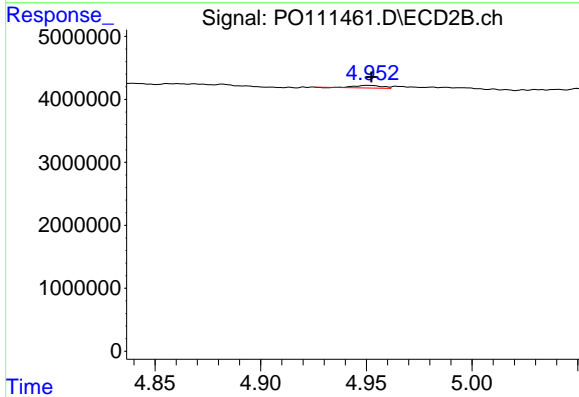
R.T.: 4.770 min
 Delta R.T.: -0.007 min
 Response: 1768897
 Conc: 13.49 ng/ml



#13 AR-1232-3

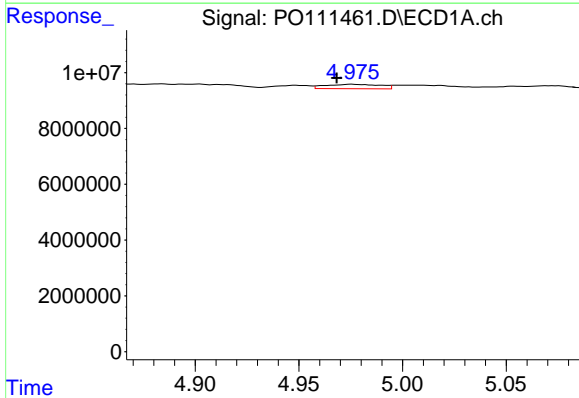
R.T.: 4.793 min
 Delta R.T.: 0.000 min
 Response: 2170037
 Conc: 14.19 ng/ml

Instrument :
 ECD_O
 ClientSampleId :
 TP-25



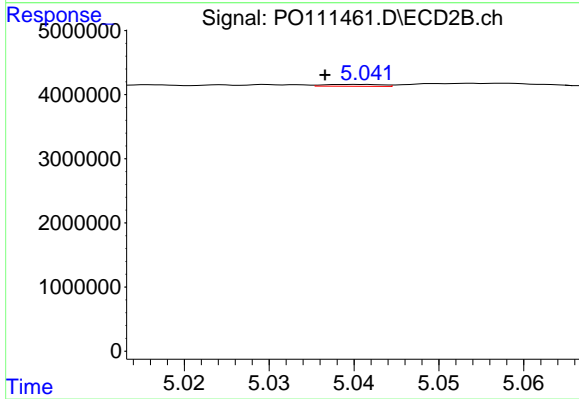
#13 AR-1232-3

R.T.: 4.951 min
 Delta R.T.: -0.001 min
 Response: 380129
 Conc: 5.58 ng/ml



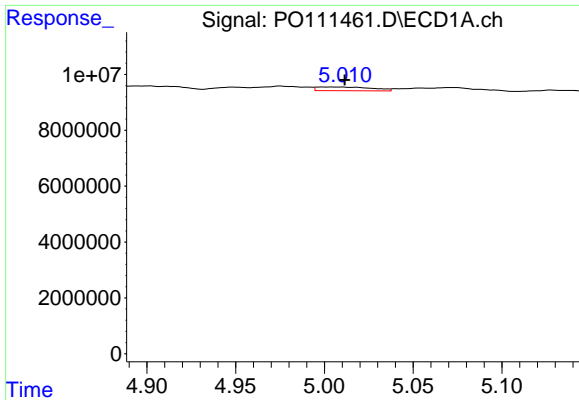
#14 AR-1232-4

R.T.: 4.975 min
 Delta R.T.: 0.007 min
 Response: 2909721
 Conc: 35.38 ng/ml



#14 AR-1232-4

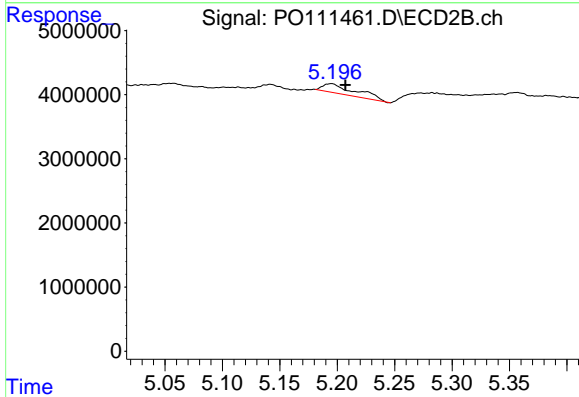
R.T.: 5.040 min
 Delta R.T.: 0.004 min
 Response: 133160
 Conc: 2.16 ng/ml



#15 AR-1232-5

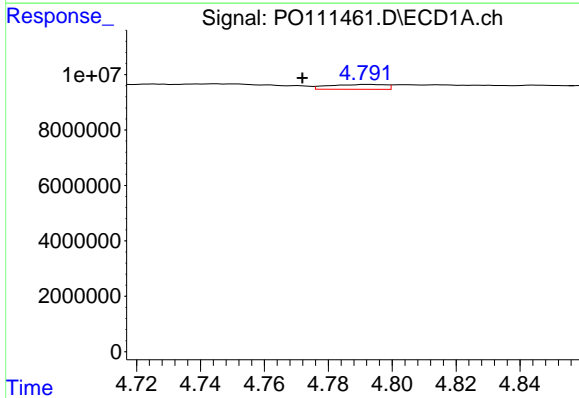
R.T.: 5.004 min
 Delta R.T.: -0.008 min
 Response: 2885559
 Conc: 53.18 ng/ml

Instrument :
 ECD_O
 ClientSampleId :
 TP-25



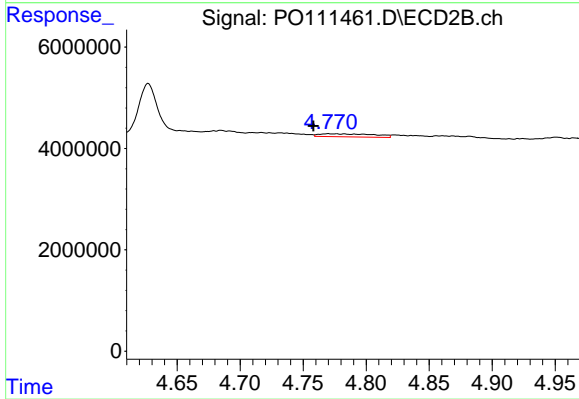
#15 AR-1232-5

R.T.: 5.195 min
 Delta R.T.: -0.012 min
 Response: 2944368
 Conc: 44.79 ng/ml



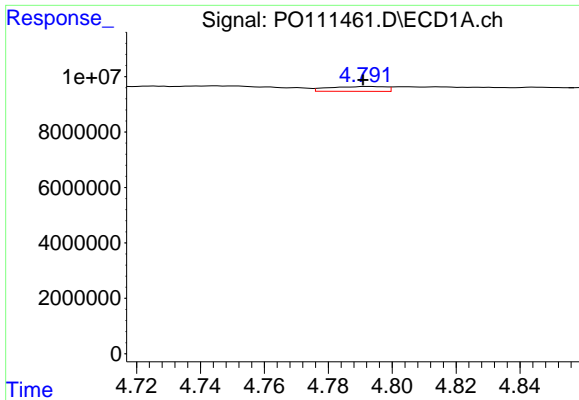
#16 AR-1242-1

R.T.: 4.793 min
 Delta R.T.: 0.021 min
 Response: 2170037
 Conc: 11.35 ng/ml



#16 AR-1242-1

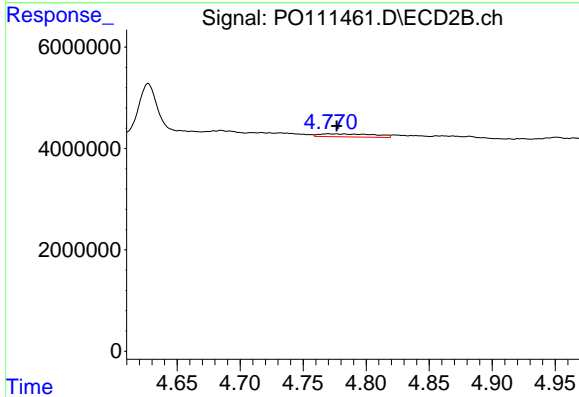
R.T.: 4.770 min
 Delta R.T.: 0.012 min
 Response: 1768897
 Conc: 10.98 ng/ml



#17 AR-1242-2

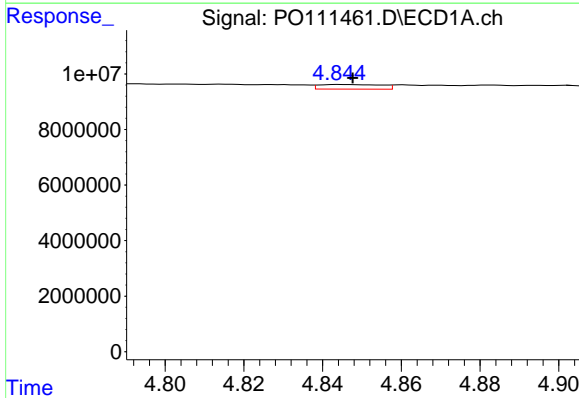
R.T.: 4.793 min
 Delta R.T.: 0.002 min
 Response: 2170037
 Conc: 7.98 ng/ml

Instrument :
 ECD_O
 ClientSampleId :
 TP-25



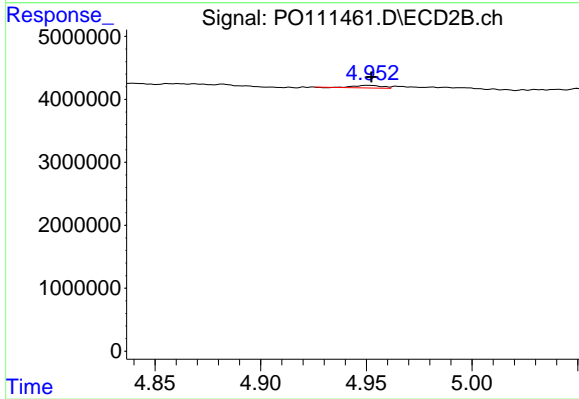
#17 AR-1242-2

R.T.: 4.770 min
 Delta R.T.: -0.007 min
 Response: 1768897
 Conc: 7.54 ng/ml



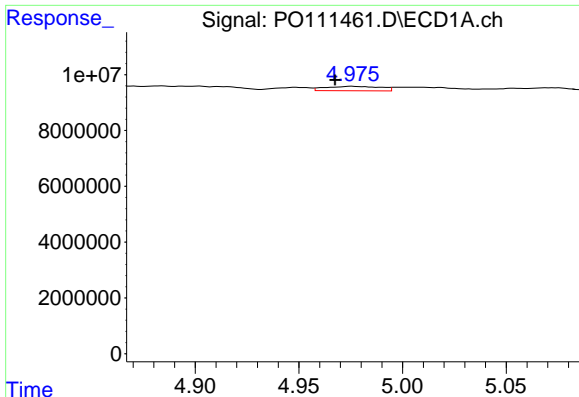
#18 AR-1242-3

R.T.: 4.844 min
 Delta R.T.: -0.003 min
 Response: 1812891
 Conc: 9.75 ng/ml



#18 AR-1242-3

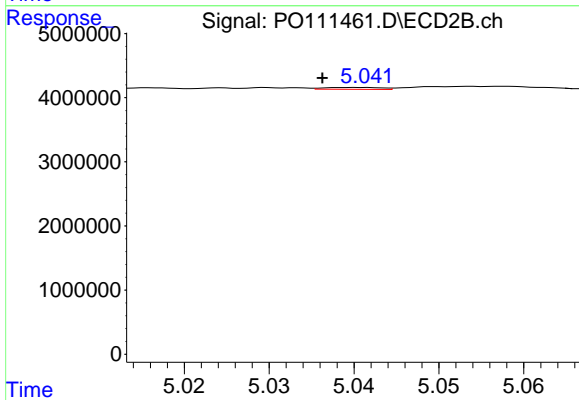
R.T.: 4.951 min
 Delta R.T.: -0.001 min
 Response: 380129
 Conc: 3.08 ng/ml



#19 AR-1242-4

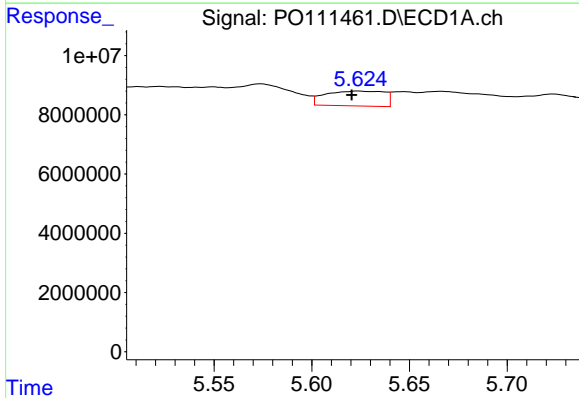
R.T.: 4.975 min
 Delta R.T.: 0.008 min
 Response: 2909721
 Conc: 19.69 ng/ml

Instrument :
 ECD_O
 ClientSampleId :
 TP-25



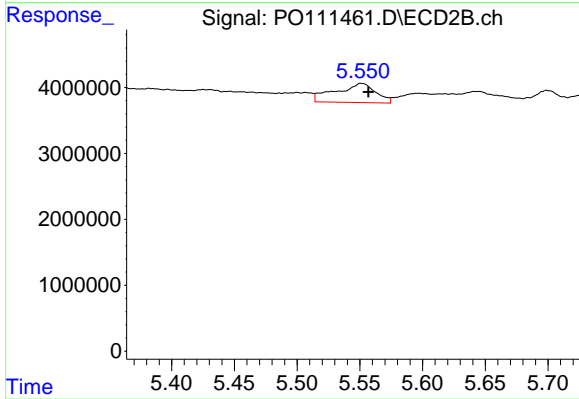
#19 AR-1242-4

R.T.: 5.040 min
 Delta R.T.: 0.004 min
 Response: 133160
 Conc: 1.08 ng/ml



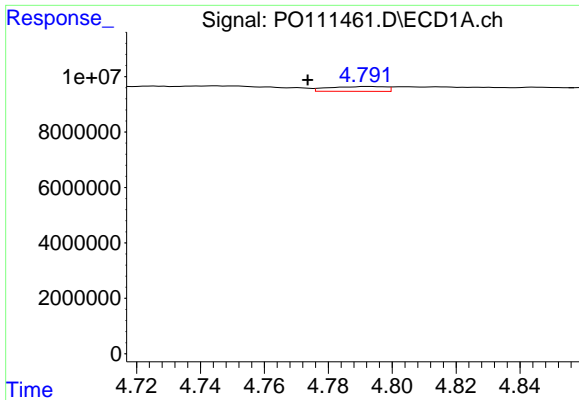
#20 AR-1242-5

R.T.: 5.624 min
 Delta R.T.: 0.003 min
 Response: 10496654
 Conc: 67.48 ng/ml



#20 AR-1242-5

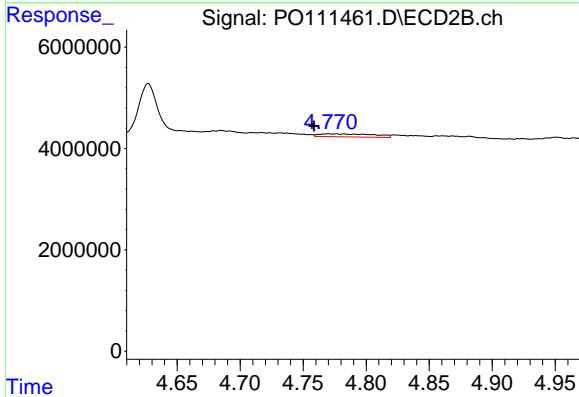
R.T.: 5.551 min
 Delta R.T.: -0.005 min
 Response: 6457993
 Conc: 42.49 ng/ml



#21 AR-1248-1

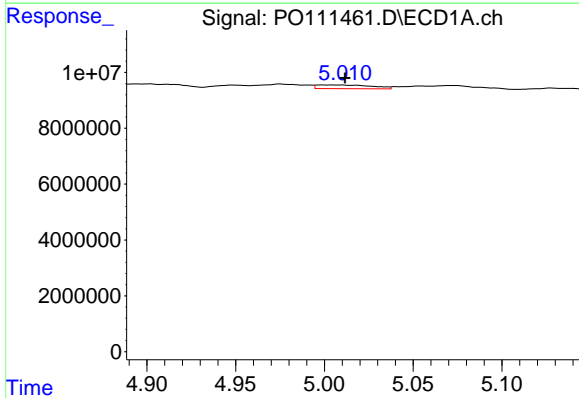
R.T.: 4.793 min
 Delta R.T.: 0.019 min
 Response: 2170037
 Conc: 14.17 ng/ml

Instrument :
 ECD_O
 ClientSampleId :
 TP-25



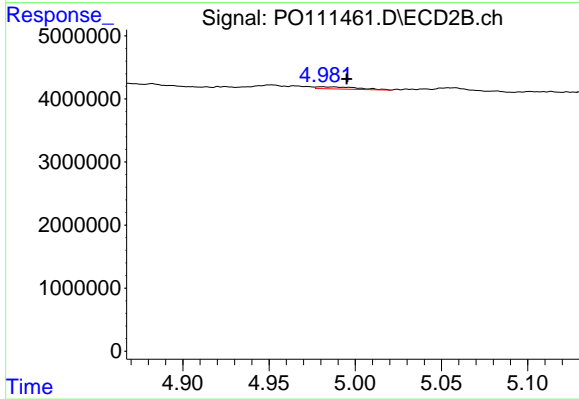
#21 AR-1248-1

R.T.: 4.770 min
 Delta R.T.: 0.011 min
 Response: 1768897
 Conc: 13.64 ng/ml



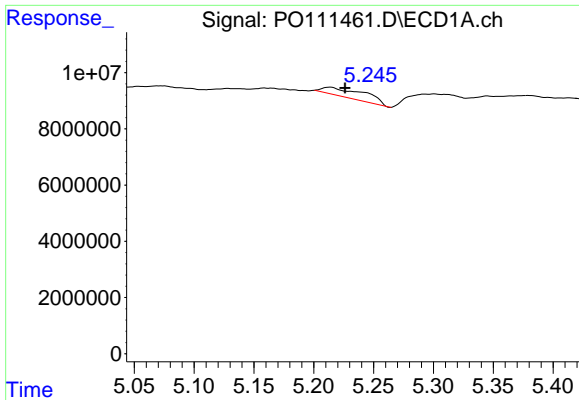
#22 AR-1248-2

R.T.: 5.004 min
 Delta R.T.: -0.008 min
 Response: 2885559
 Conc: 14.39 ng/ml



#22 AR-1248-2

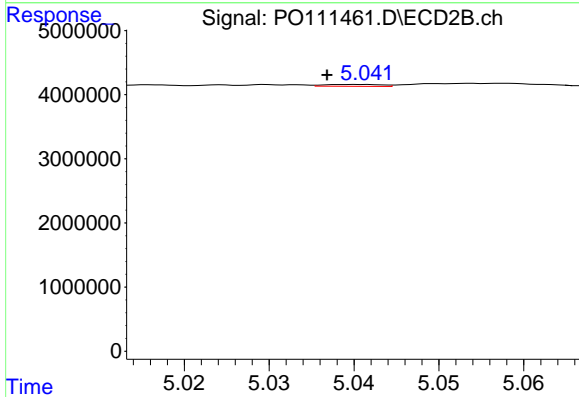
R.T.: 4.981 min
 Delta R.T.: -0.014 min
 Response: 571203
 Conc: 3.25 ng/ml



#23 AR-1248-3

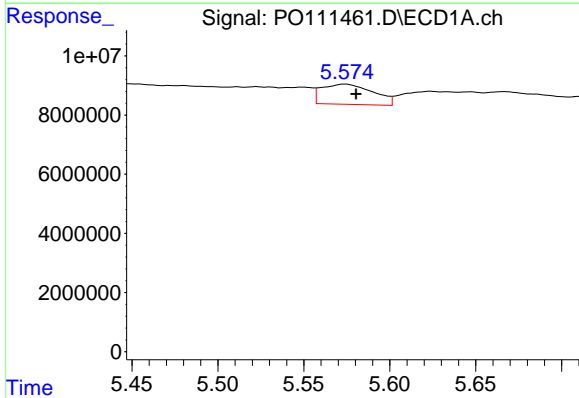
R.T.: 5.214 min
 Delta R.T.: -0.012 min
 Response: 7930222
 Conc: 30.98 ng/ml

Instrument :
 ECD_O
 ClientSampleId :
 TP-25



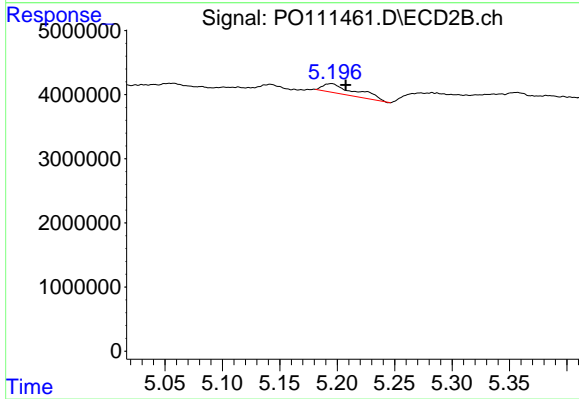
#23 AR-1248-3

R.T.: 5.040 min
 Delta R.T.: 0.004 min
 Response: 133160
 Conc: 0.71 ng/ml



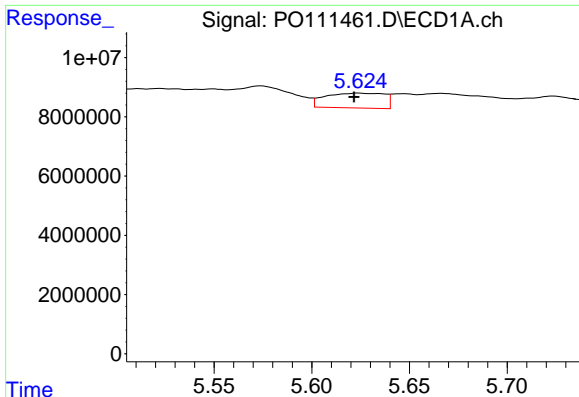
#24 AR-1248-4

R.T.: 5.574 min
 Delta R.T.: -0.006 min
 Response: 14170972
 Conc: 39.13 ng/ml



#24 AR-1248-4

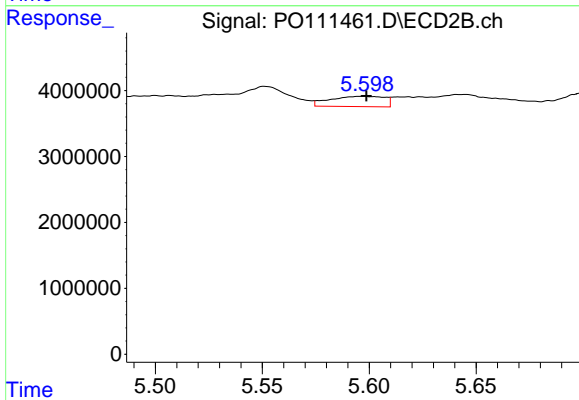
R.T.: 5.195 min
 Delta R.T.: -0.013 min
 Response: 2944368
 Conc: 13.39 ng/ml



#25 AR-1248-5

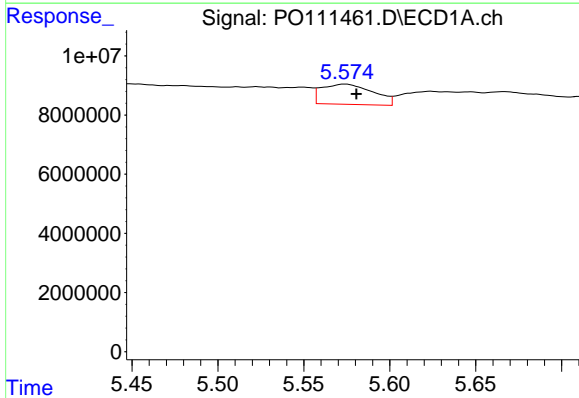
R.T.: 5.624 min
 Delta R.T.: 0.002 min
 Response: 10496654
 Conc: 40.06 ng/ml

Instrument :
 ECD_O
 ClientSampleId :
 TP-25



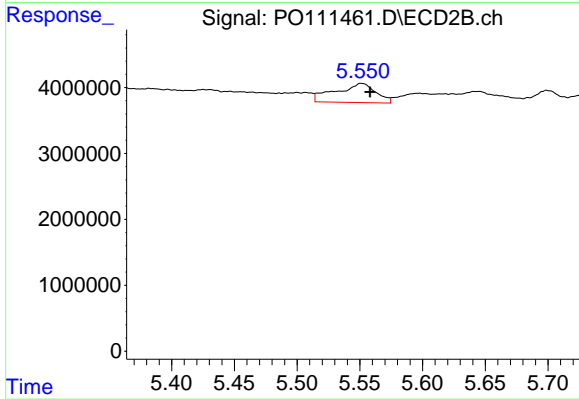
#25 AR-1248-5

R.T.: 5.597 min
 Delta R.T.: -0.002 min
 Response: 2786876
 Conc: 12.76 ng/ml



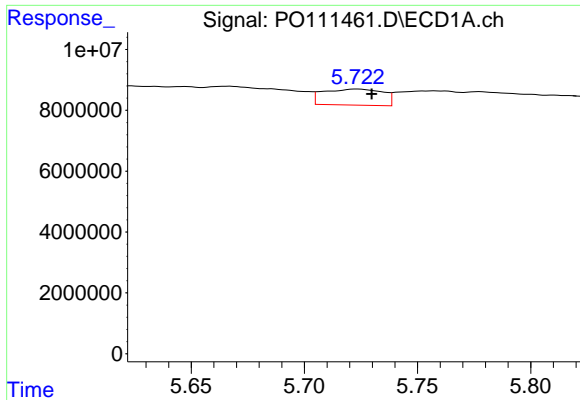
#26 AR-1254-1

R.T.: 5.574 min
 Delta R.T.: -0.007 min
 Response: 14170972
 Conc: 37.33 ng/ml



#26 AR-1254-1

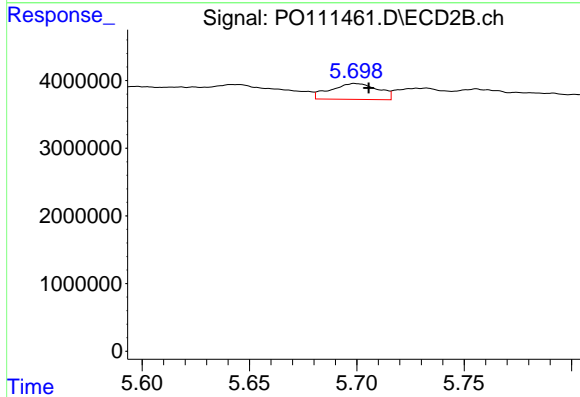
R.T.: 5.551 min
 Delta R.T.: -0.007 min
 Response: 6457993
 Conc: 19.93 ng/ml



#27 AR-1254-2

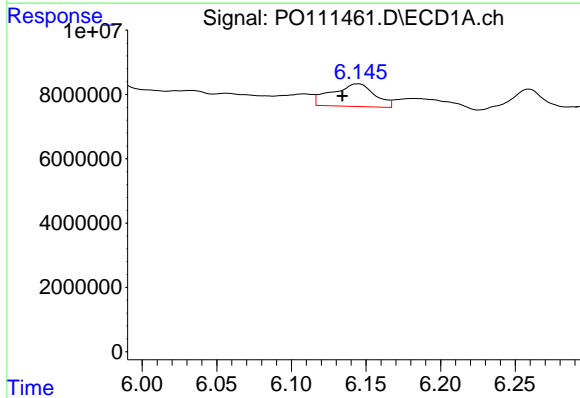
R.T.: 5.724 min
 Delta R.T.: -0.006 min
 Response: 9609965
 Conc: 29.41 ng/ml

Instrument :
 ECD_O
 ClientSampleId :
 TP-25



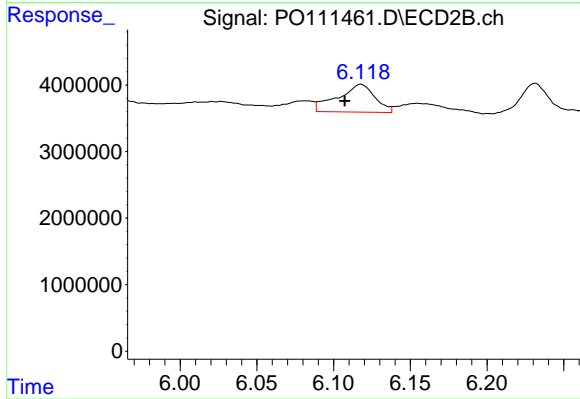
#27 AR-1254-2

R.T.: 5.699 min
 Delta R.T.: -0.006 min
 Response: 3614768
 Conc: 12.76 ng/ml



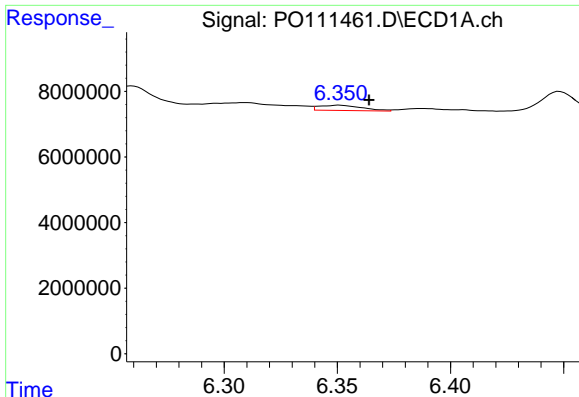
#28 AR-1254-3

R.T.: 6.145 min
 Delta R.T.: 0.011 min
 Response: 14093678
 Conc: 26.79 ng/ml



#28 AR-1254-3

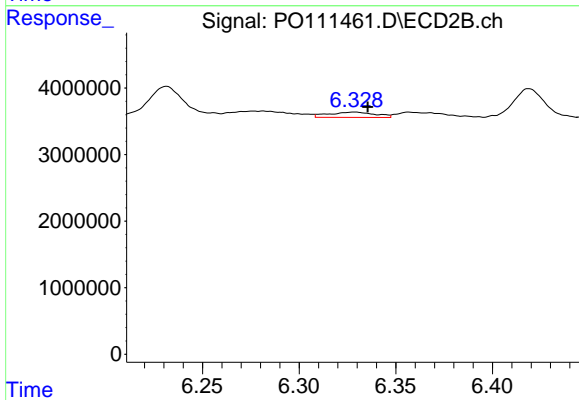
R.T.: 6.118 min
 Delta R.T.: 0.011 min
 Response: 7076721
 Conc: 16.40 ng/ml



#29 AR-1254-4

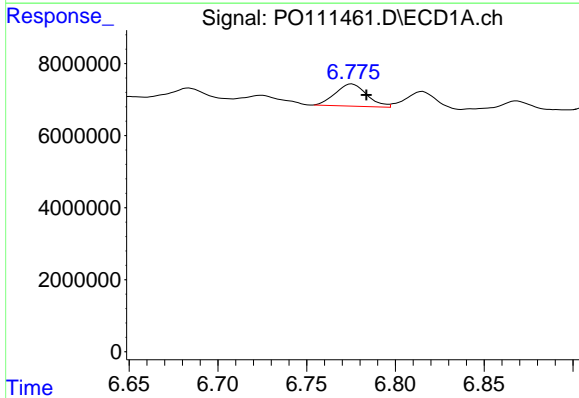
R.T.: 6.351 min
 Delta R.T.: -0.013 min
 Response: 2133503
 Conc: 6.35 ng/ml

Instrument :
 ECD_O
 ClientSampleId :
 TP-25



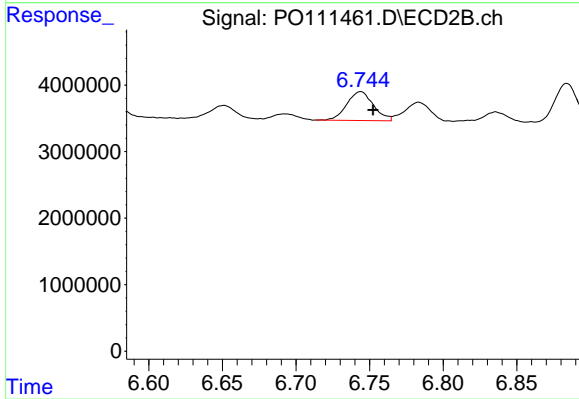
#29 AR-1254-4

R.T.: 6.329 min
 Delta R.T.: -0.007 min
 Response: 1338327
 Conc: 5.41 ng/ml



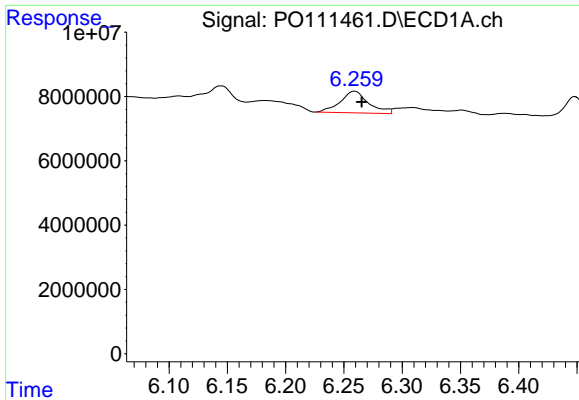
#30 AR-1254-5

R.T.: 6.775 min
 Delta R.T.: -0.008 min
 Response: 7599721
 Conc: 16.02 ng/ml



#30 AR-1254-5

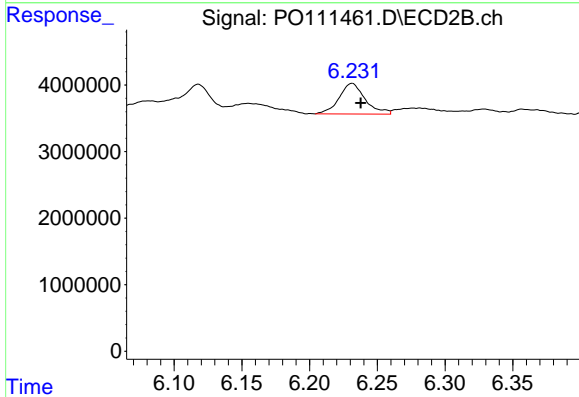
R.T.: 6.744 min
 Delta R.T.: -0.008 min
 Response: 5459687
 Conc: 15.78 ng/ml



#31 AR-1260-1

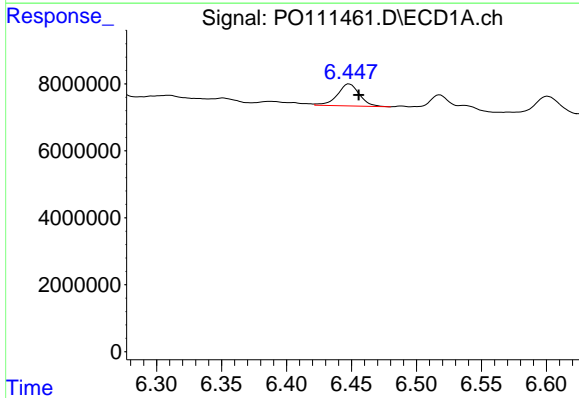
R.T.: 6.259 min
 Delta R.T.: -0.006 min
 Response: 11387090
 Conc: 37.34 ng/ml

Instrument :
 ECD_O
 ClientSampleId :
 TP-25



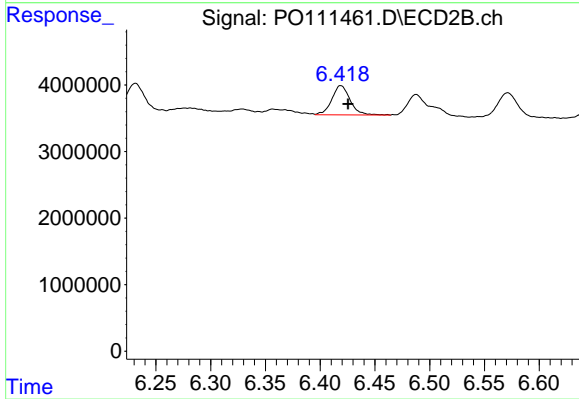
#31 AR-1260-1

R.T.: 6.231 min
 Delta R.T.: -0.006 min
 Response: 6157043
 Conc: 24.64 ng/ml



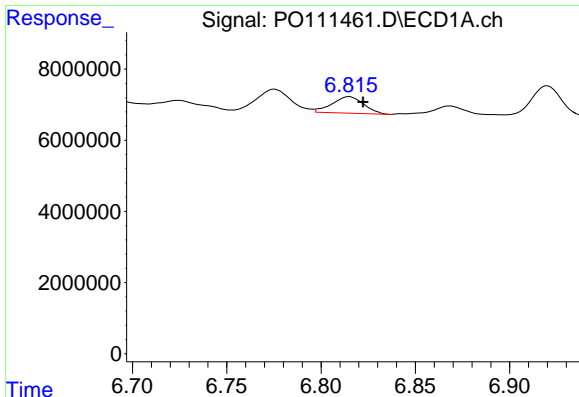
#32 AR-1260-2

R.T.: 6.448 min
 Delta R.T.: -0.007 min
 Response: 7787130
 Conc: 20.33 ng/ml



#32 AR-1260-2

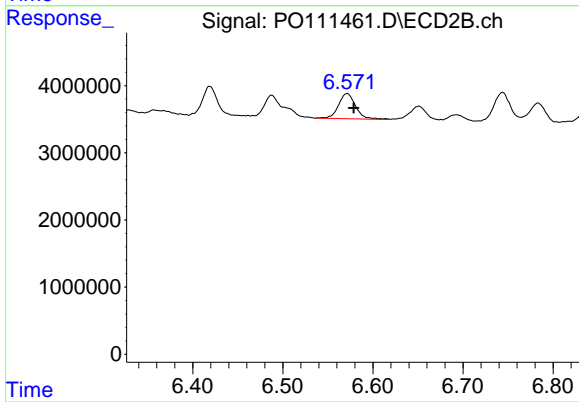
R.T.: 6.419 min
 Delta R.T.: -0.007 min
 Response: 5087308
 Conc: 17.29 ng/ml



#33 AR-1260-3

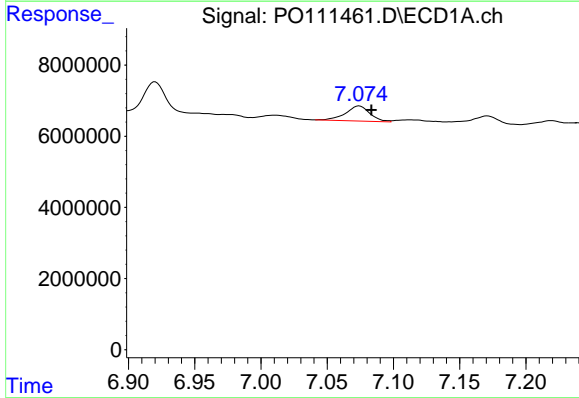
R.T.: 6.815 min
 Delta R.T.: -0.007 min
 Response: 5412703
 Conc: 15.53 ng/ml

Instrument :
 ECD_O
 ClientSampleId :
 TP-25



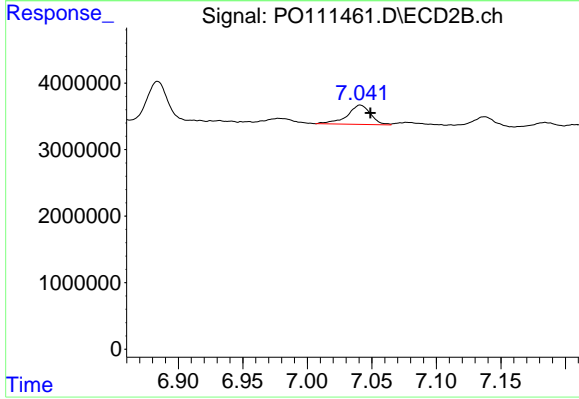
#33 AR-1260-3

R.T.: 6.571 min
 Delta R.T.: -0.007 min
 Response: 4958597
 Conc: 17.29 ng/ml



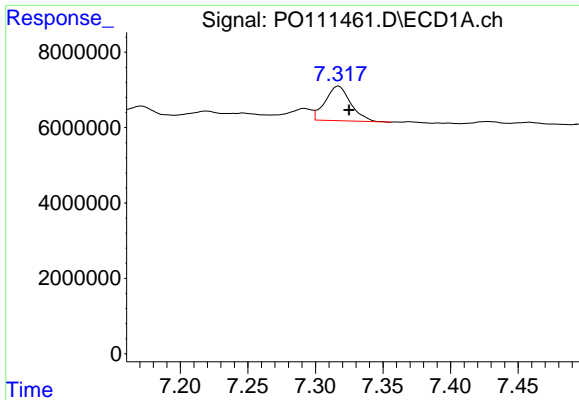
#34 AR-1260-4

R.T.: 7.074 min
 Delta R.T.: -0.009 min
 Response: 5424502
 Conc: 19.38 ng/ml



#34 AR-1260-4

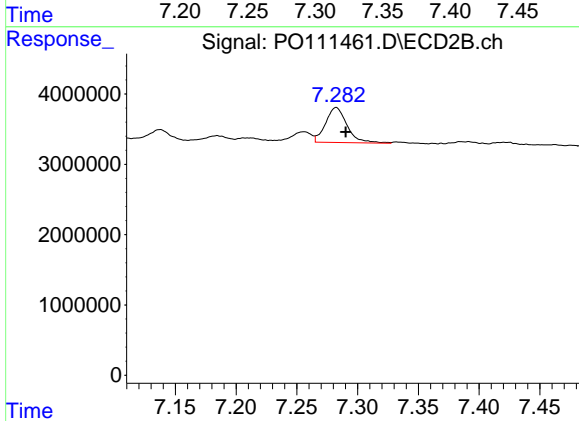
R.T.: 7.041 min
 Delta R.T.: -0.008 min
 Response: 3671202
 Conc: 18.29 ng/ml



#35 AR-1260-5

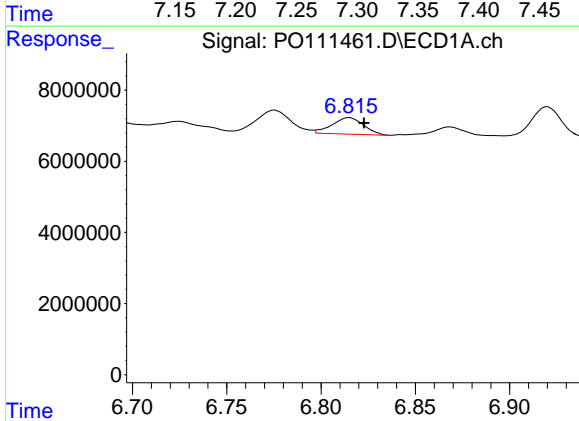
R.T.: 7.317 min
 Delta R.T.: -0.008 min
 Response: 12110747
 Conc: 16.82 ng/ml

Instrument :
 ECD_O
 ClientSampleId :
 TP-25



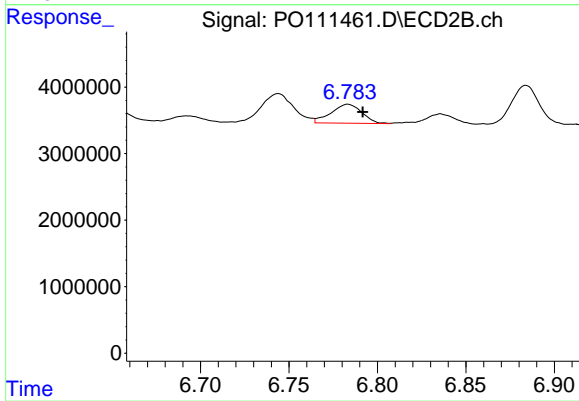
#35 AR-1260-5

R.T.: 7.282 min
 Delta R.T.: -0.008 min
 Response: 6162364
 Conc: 13.41 ng/ml



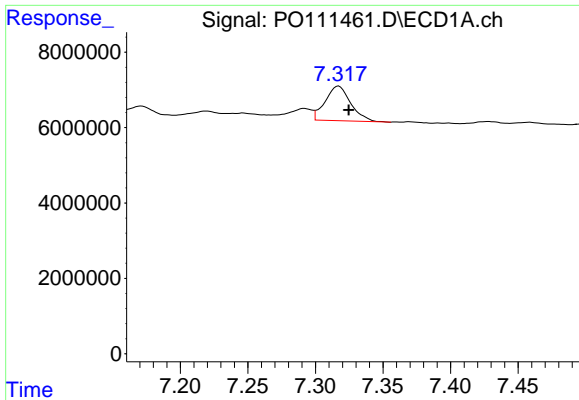
#36 AR-1262-1

R.T.: 6.815 min
 Delta R.T.: -0.008 min
 Response: 5412703
 Conc: 11.12 ng/ml



#36 AR-1262-1

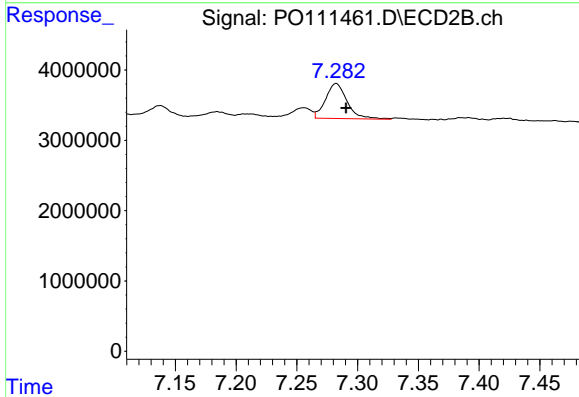
R.T.: 6.783 min
 Delta R.T.: -0.008 min
 Response: 3462944
 Conc: 10.16 ng/ml



#37 AR-1262-2

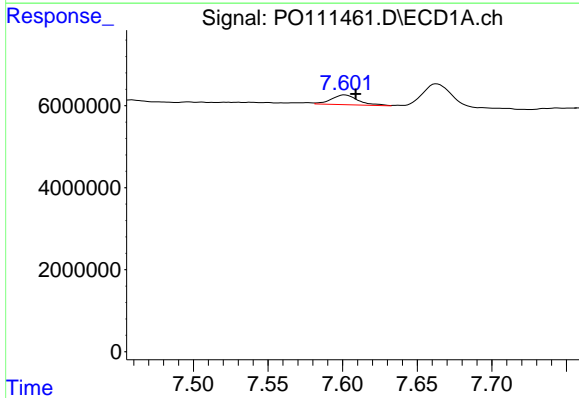
R.T.: 7.317 min
 Delta R.T.: -0.008 min
 Response: 12110747
 Conc: 14.98 ng/ml

Instrument :
 ECD_O
 ClientSampleId :
 TP-25



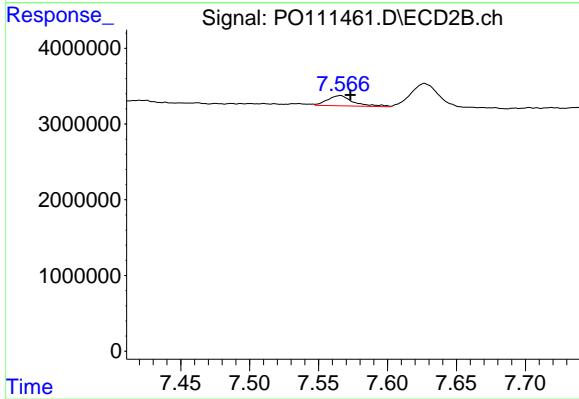
#37 AR-1262-2

R.T.: 7.282 min
 Delta R.T.: -0.008 min
 Response: 6162364
 Conc: 12.25 ng/ml



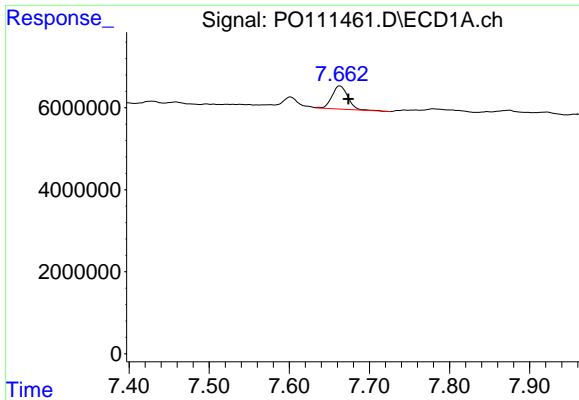
#38 AR-1262-3

R.T.: 7.601 min
 Delta R.T.: -0.007 min
 Response: 2990410
 Conc: 8.84 ng/ml



#38 AR-1262-3

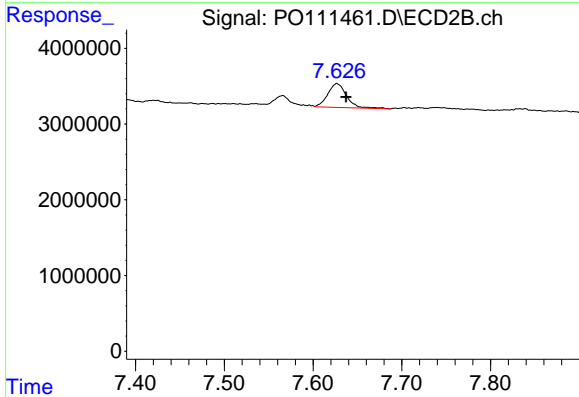
R.T.: 7.566 min
 Delta R.T.: -0.007 min
 Response: 1741986
 Conc: 9.28 ng/ml



#39 AR-1262-4

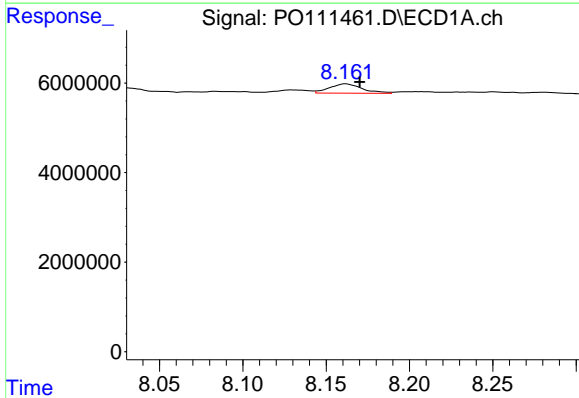
R.T.: 7.663 min
 Delta R.T.: -0.011 min
 Response: 7849696
 Conc: 13.30 ng/ml

Instrument :
 ECD_O
 ClientSampleId :
 TP-25



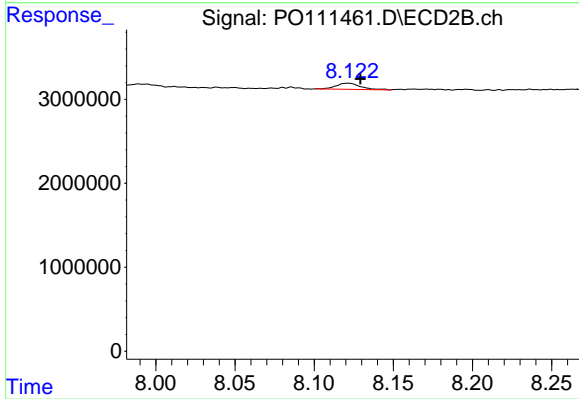
#39 AR-1262-4

R.T.: 7.627 min
 Delta R.T.: -0.010 min
 Response: 4616652
 Conc: 13.98 ng/ml



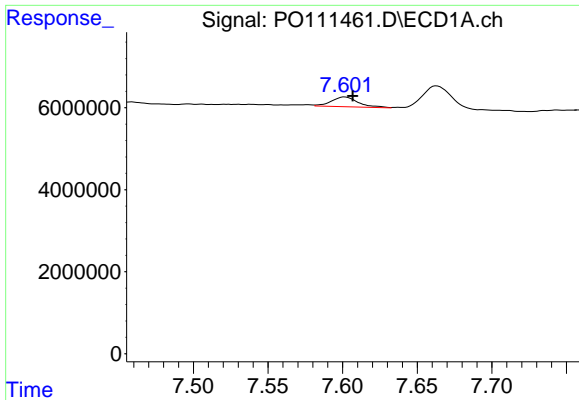
#40 AR-1262-5

R.T.: 8.162 min
 Delta R.T.: -0.008 min
 Response: 2871239
 Conc: 10.07 ng/ml



#40 AR-1262-5

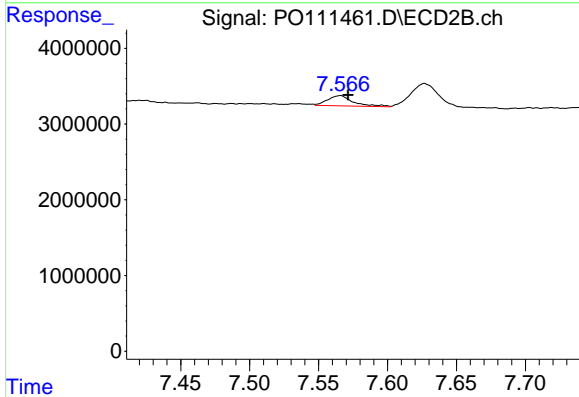
R.T.: 8.121 min
 Delta R.T.: -0.008 min
 Response: 779693
 Conc: 6.94 ng/ml



#41 AR-1268-1

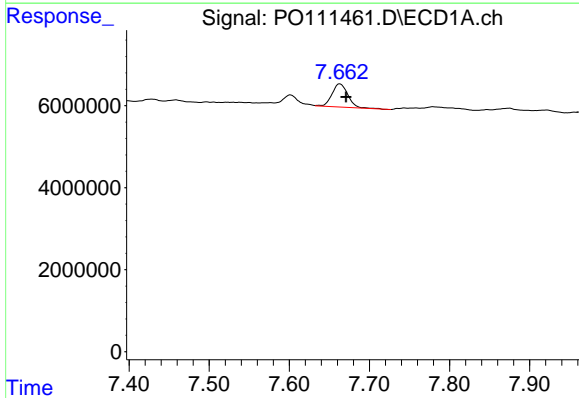
R.T.: 7.601 min
 Delta R.T.: -0.005 min
 Response: 2990410
 Conc: 3.08 ng/ml

Instrument :
 ECD_O
 ClientSampleId :
 TP-25



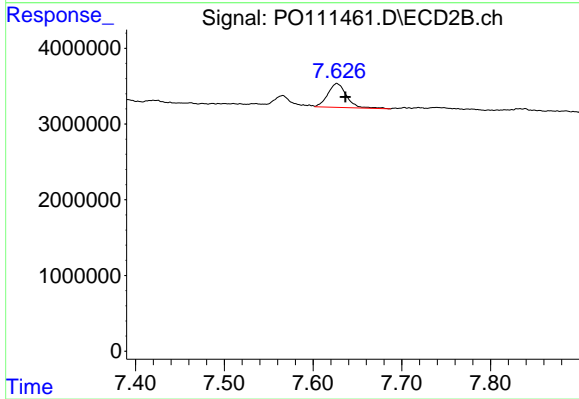
#41 AR-1268-1

R.T.: 7.566 min
 Delta R.T.: -0.006 min
 Response: 1741986
 Conc: 3.29 ng/ml



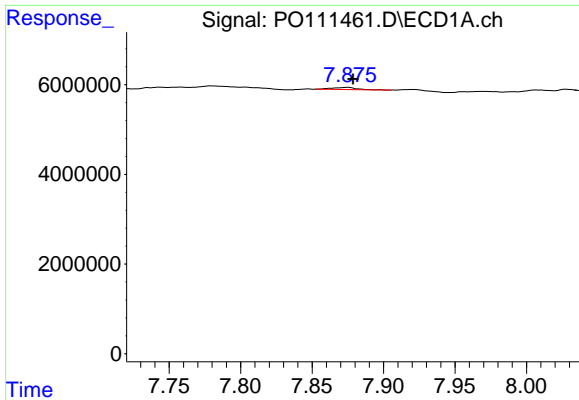
#42 AR-1268-2

R.T.: 7.663 min
 Delta R.T.: -0.008 min
 Response: 7849696
 Conc: 8.80 ng/ml



#42 AR-1268-2

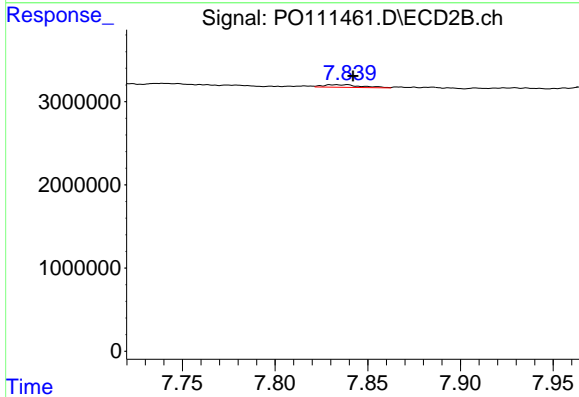
R.T.: 7.627 min
 Delta R.T.: -0.010 min
 Response: 4616652
 Conc: 9.57 ng/ml



#43 AR-1268-3

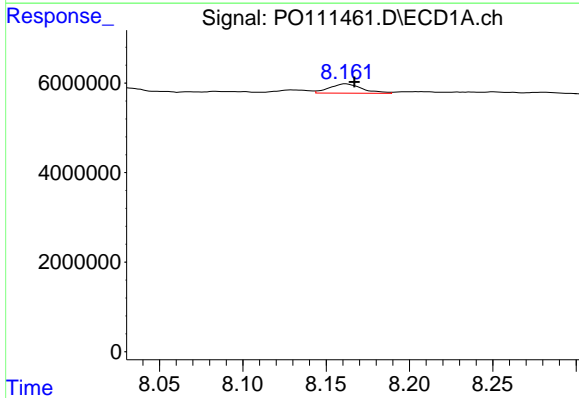
R.T.: 7.875 min
 Delta R.T.: -0.004 min
 Response: 573058
 Conc: 0.76 ng/ml

Instrument :
 ECD_O
 ClientSampleId :
 TP-25



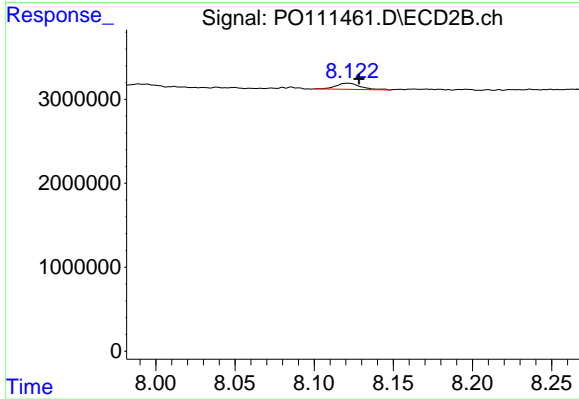
#43 AR-1268-3

R.T.: 7.839 min
 Delta R.T.: -0.003 min
 Response: 433829
 Conc: 1.25 ng/ml



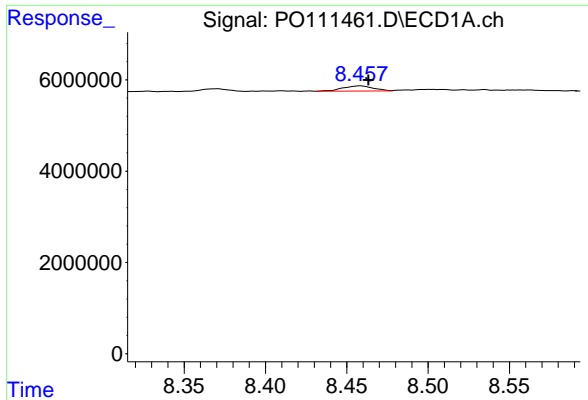
#44 AR-1268-4

R.T.: 8.162 min
 Delta R.T.: -0.005 min
 Response: 2871239
 Conc: 8.79 ng/ml



#44 AR-1268-4

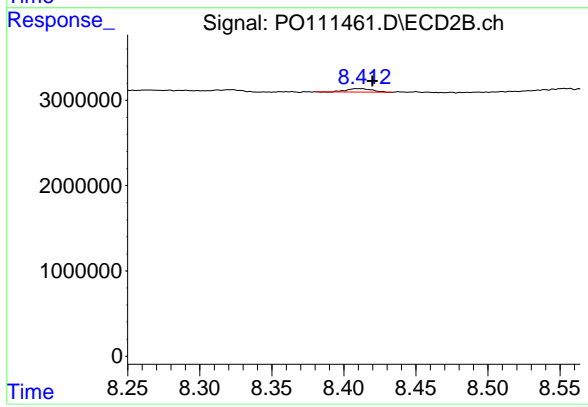
R.T.: 8.121 min
 Delta R.T.: -0.007 min
 Response: 779693
 Conc: 6.13 ng/ml



#45 AR-1268-5

R.T.: 8.458 min
 Delta R.T.: -0.005 min
 Response: 1517823
 Conc: 0.70 ng/ml

Instrument :
 ECD_O
 ClientSampleId :
 TP-25



#45 AR-1268-5

R.T.: 8.411 min
 Delta R.T.: -0.009 min
 Response: 486063
 Conc: 0.65 ng/ml