

Data Path : Z:\pestpcbsrv\HPCHEM1\ECD_0\Data\P0060425\
 Data File : PO111477.D
 Signal(s) : Signal #1: ECD1A.ch Signal #2: ECD2B.ch
 Acq On : 04 Jun 2025 18:57
 Operator : YP/AJ
 Sample : AR1660CCC500
 Misc :
 ALS Vial : 3 Sample Multiplier: 1

Instrument :
 ECD_0
 ClientSampleId :
 AR1660CCC500

Integration File signal 1: autoint1.e
 Integration File signal 2: autoint2.e
 Quant Time: Jun 05 01:45:12 2025
 Quant Method : Z:\pestpcbsrv\HPCHEM1\ECD_0\methods\P0051525.M
 Quant Title : GC EXTRACTABLES
 QLast Update : Thu May 15 07:11:53 2025
 Response via : Initial Calibration
 Integrator: ChemStation

Volume Inj. : 2 µl
 Signal #1 Phase : ZB-MR1 Signal #2 Phase: ZB-MR2
 Signal #1 Info : 30Mx0.32mmx 0.50µ Signal #2 Info : 30M x 0.32mm x 0.25µm

Compound	RT#1	RT#2	Resp#1	Resp#2	ng/ml	ng/ml
System Monitoring Compounds						
1) SA Tetrachlo...	3.679	3.676	304.7E6	280.7E6	51.791	51.497
2) SA Decachlor...	8.715	8.666	241.7E6	81301860	46.817	43.943
Target Compounds						
3) L1 AR-1016-1	4.768	4.753	118.6E6	93946883	526.936	492.056
4) L1 AR-1016-2	4.787	4.772	172.9E6	138.5E6	541.981	499.682
5) L1 AR-1016-3	4.843	4.947	119.5E6	71994242	550.360	492.858
6) L1 AR-1016-4	4.963	4.990	95135460	57799429	546.290	481.306
7) L1 AR-1016-5	5.221	5.202	95730210	76234498	543.948	493.746
8) L2 AR-1221-1	3.890	3.884	12375560	10377937	142.074	140.541
9) L2 AR-1221-2	3.978	3.971	18810327	14598793	295.278	268.290
10) L2 AR-1221-3	4.053	4.046	63618348	53835389	330.781	322.173
11) L3 AR-1232-1	4.053	4.046	63618348	53835389	415.335	412.232
12) L3 AR-1232-2	4.546	4.772	87960880	138.5E6	1073.394	1055.764
13) L3 AR-1232-3	4.787	4.947	172.9E6	71994242	1130.319	1057.624
14) L3 AR-1232-4	4.963	5.031	95135460	70607501	1156.642	1144.807
15) L3 AR-1232-5	5.006	5.202	71503095	76234498	1317.804	1159.768
16) L4 AR-1242-1	4.768	4.753	118.6E6	93946883	620.241	583.134
17) L4 AR-1242-2	4.787	4.772	172.9E6	138.5E6	635.467	590.242
18) L4 AR-1242-3	4.843	4.947	119.5E6	71994242	642.499	582.390
19) L4 AR-1242-4	4.963	5.031	95135460	70607501	643.676	571.188
20) L4 AR-1242-5	5.616	5.552	25496543	73841287	163.921	485.841 #
21) L5 AR-1248-1	4.768	4.753	118.6E6	93946883	774.258	724.183
22) L5 AR-1248-2	5.006	4.990	71503095	57799429	356.593	328.608
23) L5 AR-1248-3	5.221	5.031	95730210	70607501	373.939	376.344
24) L5 AR-1248-4	5.574	5.202	96896202	76234498	267.535	346.773 #
25) L5 AR-1248-5	5.616	5.593	25496543	19326468	97.294	88.521
26) L6 AR-1254-1	5.574	5.552	96896202	73841287	255.276	227.878
27) L6 AR-1254-2	5.724	5.700	70910640	52121767	217.001	184.017
28) L6 AR-1254-3	6.144	6.117	133.6E6	94139850	253.996	218.193
29) L6 AR-1254-4	6.357	6.330	20058898	12727562	59.685	51.457
30) L6 AR-1254-5	6.776	6.746	219.1E6	144.4E6	461.747	417.285
31) L7 AR-1260-1	6.259	6.233	167.1E6	122.1E6	548.048	488.531
32) L7 AR-1260-2	6.449	6.420	220.9E6	142.9E6	576.858	485.600
33) L7 AR-1260-3	6.815	6.573	194.3E6	130.2E6	557.343	453.962
34) L7 AR-1260-4	7.076	7.043	145.0E6	93373298	517.788	465.091
35) L7 AR-1260-5	7.317	7.284	383.4E6	209.3E6	532.634	455.420
36) L8 AR-1262-1	6.815	6.785	194.3E6	118.5E6	399.215	347.717
37) L8 AR-1262-2	7.317	7.284	383.4E6	209.3E6	474.269	416.247
38) L8 AR-1262-3	7.602	7.566	92254702	44870803	272.730	239.139
39) L8 AR-1262-4	7.665	7.629	259.7E6	127.8E6	439.840	387.007
40) L8 AR-1262-5	8.161	8.123	98339570	35062314	344.789	312.204
41) L9 AR-1268-1	7.602	7.566	92254702	44870803	95.146	84.647

Data Path : Z:\pestpcbsrv\HPCHEM1\ECD_0\Data\P0060425\
 Data File : P0111477.D
 Signal(s) : Signal #1: ECD1A.ch Signal #2: ECD2B.ch
 Acq On : 04 Jun 2025 18:57
 Operator : YP/AJ
 Sample : AR1660CCC500
 Misc :
 ALS Vial : 3 Sample Multiplier: 1

Instrument :
 ECD_0
 ClientSampleId :
 AR1660CCC500

Integration File signal 1: autoint1.e
 Integration File signal 2: autoint2.e
 Quant Time: Jun 05 01:45:12 2025
 Quant Method : Z:\pestpcbsrv\HPCHEM1\ECD_0\methods\P0051525.M
 Quant Title : GC EXTRACTABLES
 QLast Update : Thu May 15 07:11:53 2025
 Response via : Initial Calibration
 Integrator: ChemStation

Volume Inj. : 2 µl
 Signal #1 Phase : ZB-MR1 Signal #2 Phase: ZB-MR2
 Signal #1 Info : 30Mx0.32mmx 0.50µ Signal #2 Info : 30M x 0.32mm x 0.25µm

	Compound	RT#1	RT#2	Resp#1	Resp#2	ng/ml	ng/ml
42)	L9 AR-1268-2	7.665	7.629	259.7E6	127.8E6	290.963	264.964
43)	L9 AR-1268-3	7.872	7.835	4729226	2178917	6.232	6.253
44)	L9 AR-1268-4	8.161	8.123	98339570	35062314	301.121	275.497
45)	L9 AR-1268-5	8.457	8.413	26812053	9303070	12.422	12.358

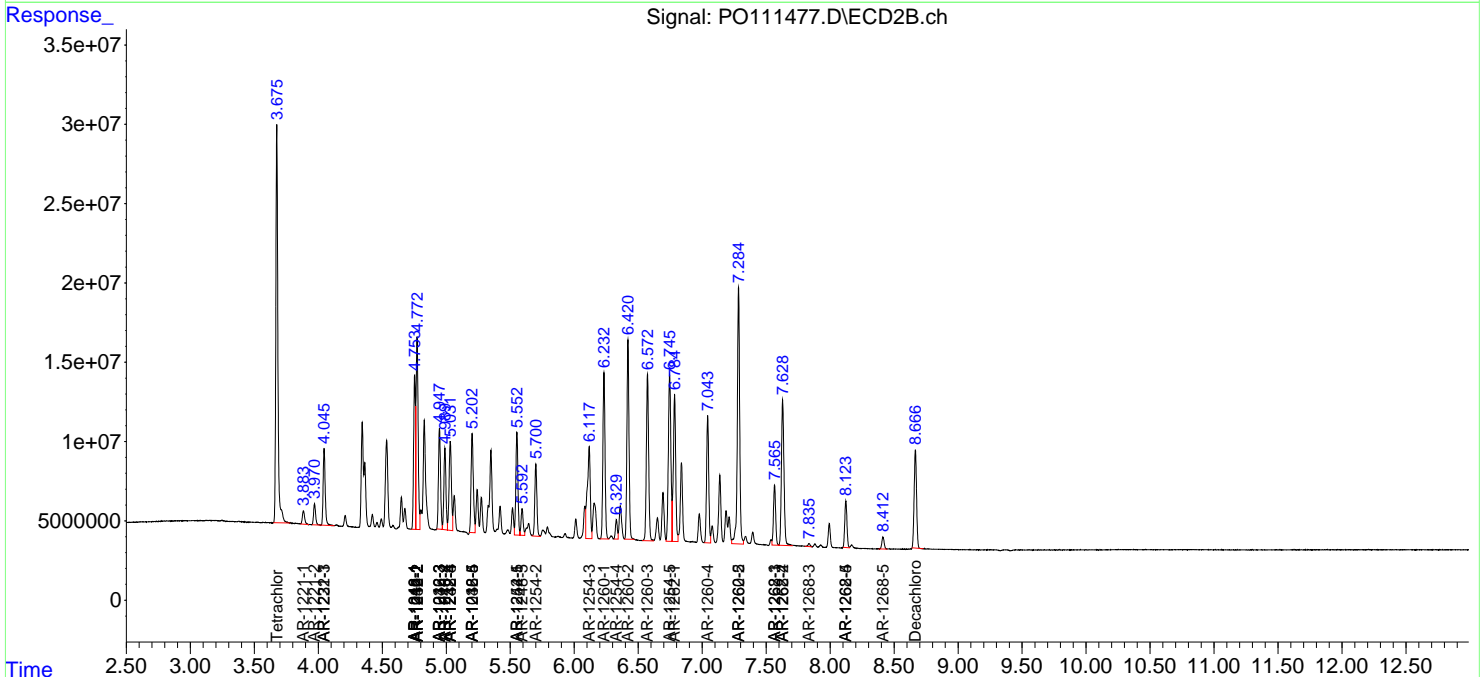
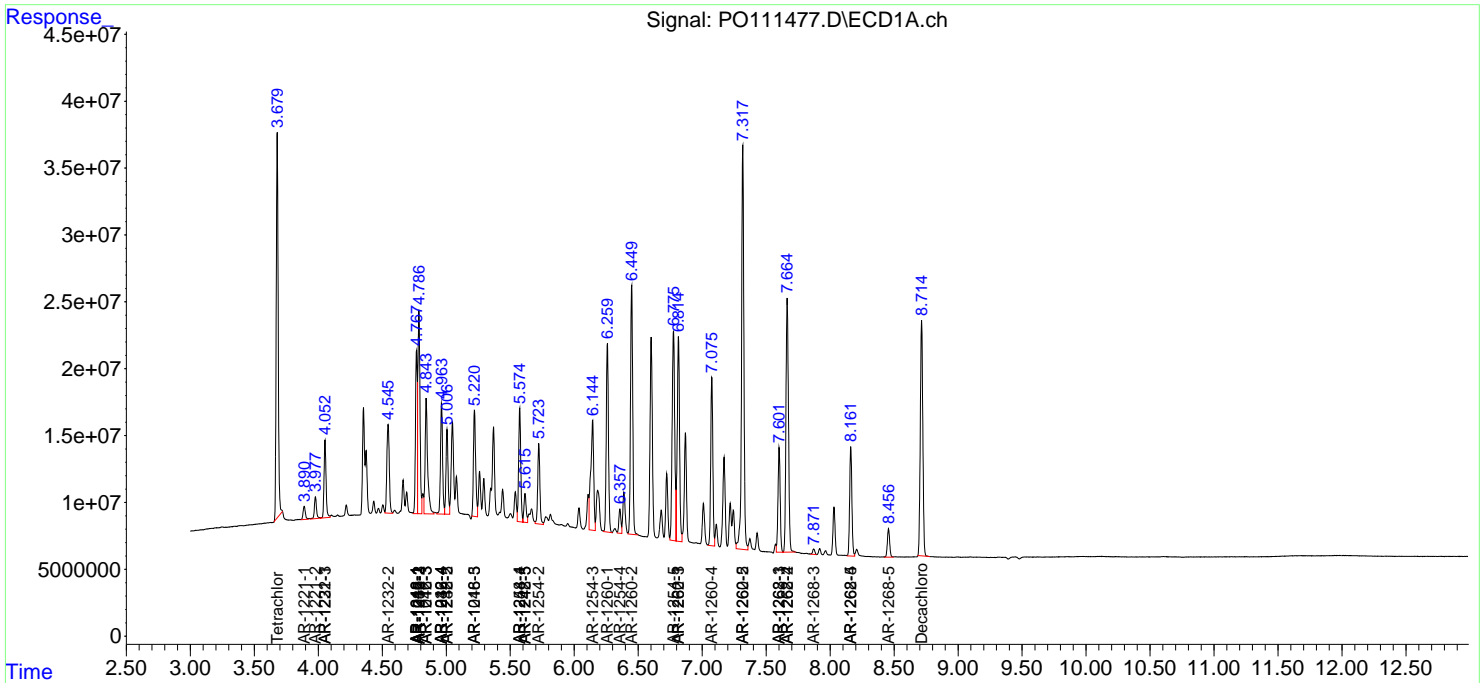
(f)=RT Delta > 1/2 Window (#)=Amounts differ by > 25% (m)=manual int.

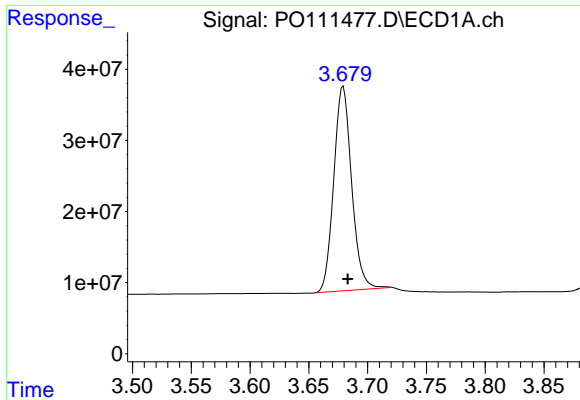
Data Path : Z:\pestpcbsrv\HPCHEM1\ECD_O\Data\PO060425\
 Data File : PO111477.D
 Signal(s) : Signal #1: ECD1A.ch Signal #2: ECD2B.ch
 Acq On : 04 Jun 2025 18:57
 Operator : YP/AJ
 Sample : AR1660CCC500
 Misc :
 ALS Vial : 3 Sample Multiplier: 1

Instrument :
 ECD_O
 ClientSampleId :
 AR1660CCC500

Integration File signal 1: autoint1.e
 Integration File signal 2: autoint2.e
 Quant Time: Jun 05 01:45:12 2025
 Quant Method : Z:\pestpcbsrv\HPCHEM1\ECD_O\methods\PO051525.M
 Quant Title : GC EXTRACTABLES
 QLast Update : Thu May 15 07:11:53 2025
 Response via : Initial Calibration
 Integrator: ChemStation

Volume Inj. : 2 µl
 Signal #1 Phase : ZB-MR1 Signal #2 Phase: ZB-MR2
 Signal #1 Info : 30Mx0.32mmx 0.50µ Signal #2 Info : 30M x 0.32mm x 0.25µm

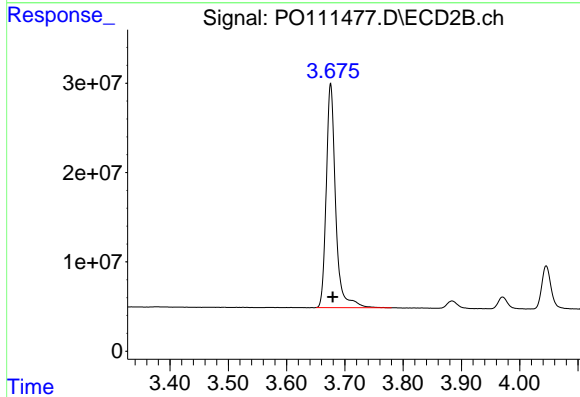




#1 Tetrachloro-m-xylene

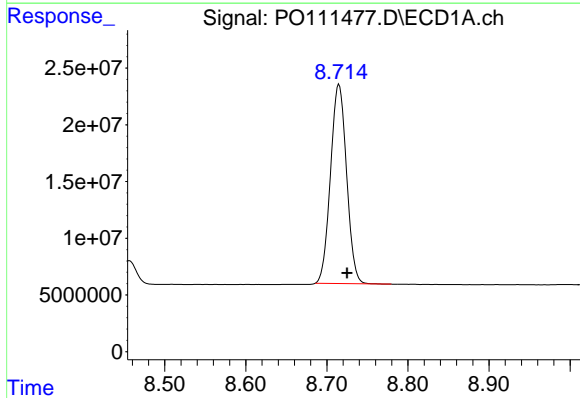
R.T.: 3.679 min
 Delta R.T.: -0.004 min
 Response: 304696385
 Conc: 51.79 ng/ml

Instrument :
 ECD_O
 ClientSampleId :
 AR1660CCC500



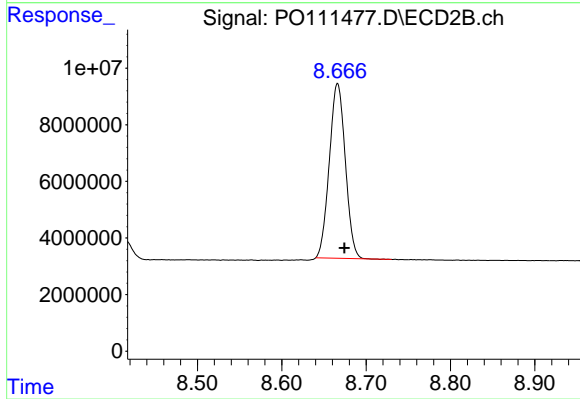
#1 Tetrachloro-m-xylene

R.T.: 3.676 min
 Delta R.T.: -0.003 min
 Response: 280734208
 Conc: 51.50 ng/ml



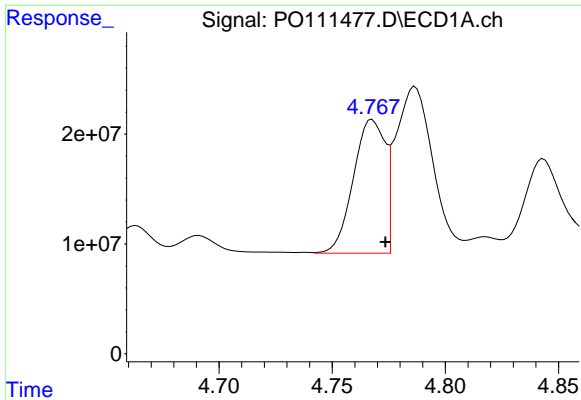
#2 Decachlorobiphenyl

R.T.: 8.715 min
 Delta R.T.: -0.010 min
 Response: 241707941
 Conc: 46.82 ng/ml



#2 Decachlorobiphenyl

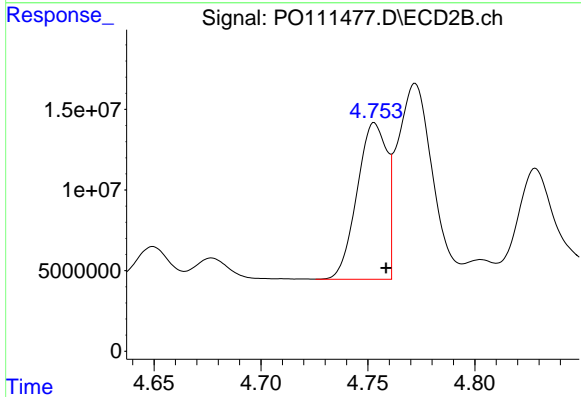
R.T.: 8.666 min
 Delta R.T.: -0.008 min
 Response: 81301860
 Conc: 43.94 ng/ml



#3 AR-1016-1

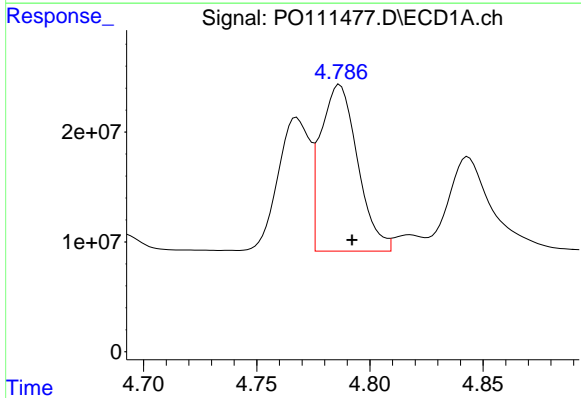
R.T.: 4.768 min
 Delta R.T.: -0.006 min
 Response: 118590003
 Conc: 526.94 ng/ml

Instrument :
 ECD_O
 ClientSampleId :
 AR1660CCC500



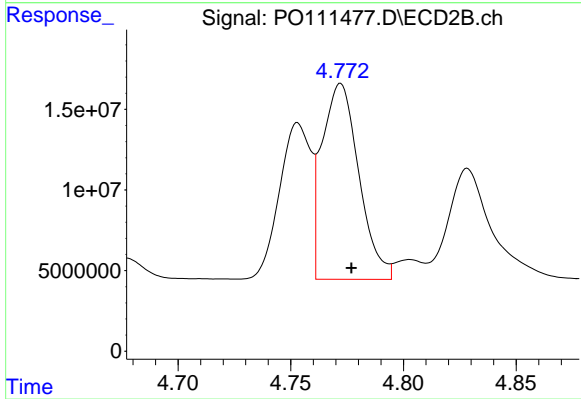
#3 AR-1016-1

R.T.: 4.753 min
 Delta R.T.: -0.005 min
 Response: 93946883
 Conc: 492.06 ng/ml



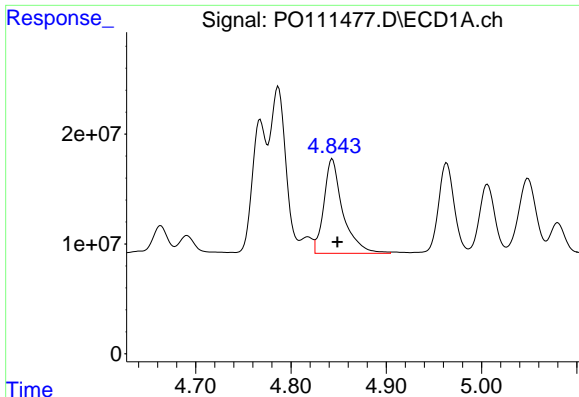
#4 AR-1016-2

R.T.: 4.787 min
 Delta R.T.: -0.005 min
 Response: 172856243
 Conc: 541.98 ng/ml



#4 AR-1016-2

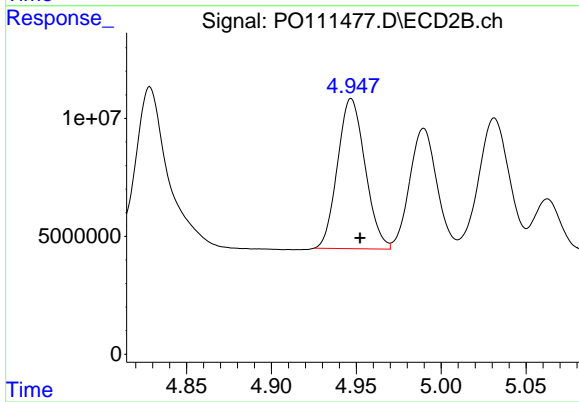
R.T.: 4.772 min
 Delta R.T.: -0.005 min
 Response: 138474375
 Conc: 499.68 ng/ml



#5 AR-1016-3

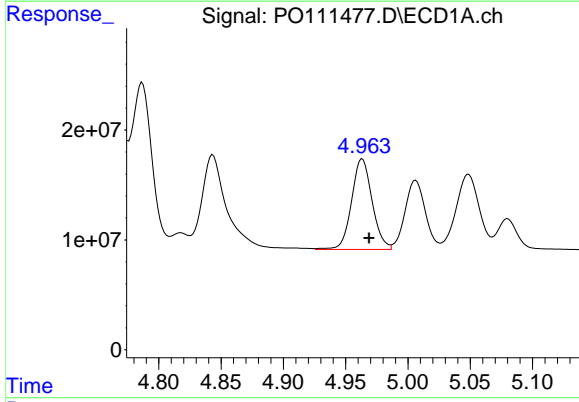
R.T.: 4.843 min
 Delta R.T.: -0.005 min
 Response: 119496370
 Conc: 550.36 ng/ml

Instrument :
 ECD_O
 ClientSampleId :
 AR1660CCC500



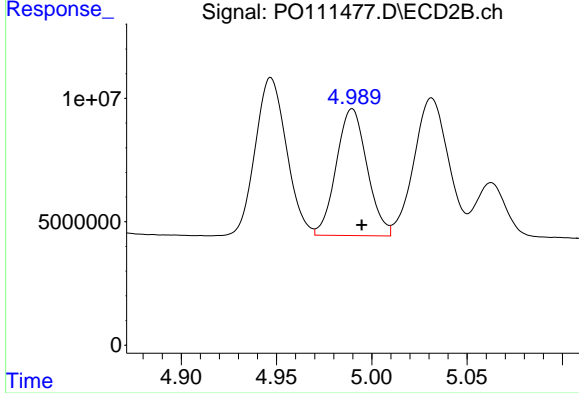
#5 AR-1016-3

R.T.: 4.947 min
 Delta R.T.: -0.005 min
 Response: 71994242
 Conc: 492.86 ng/ml



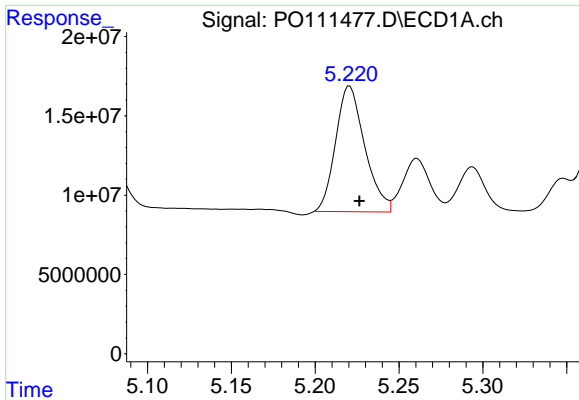
#6 AR-1016-4

R.T.: 4.963 min
 Delta R.T.: -0.005 min
 Response: 95135460
 Conc: 546.29 ng/ml



#6 AR-1016-4

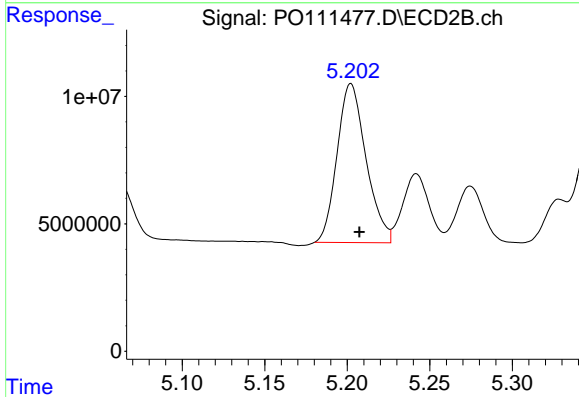
R.T.: 4.990 min
 Delta R.T.: -0.005 min
 Response: 57799429
 Conc: 481.31 ng/ml



#7 AR-1016-5

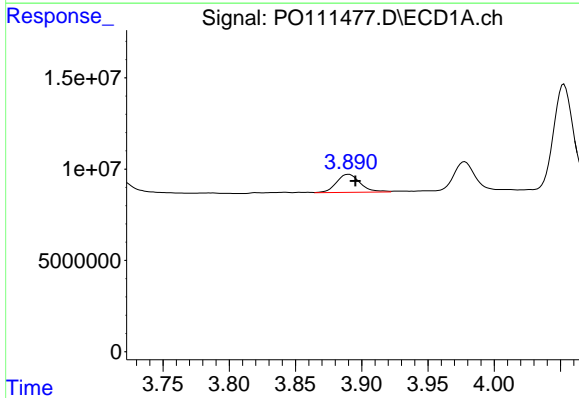
R.T.: 5.221 min
 Delta R.T.: -0.006 min
 Response: 95730210
 Conc: 543.95 ng/ml

Instrument :
 ECD_O
 ClientSampleId :
 AR1660CCC500



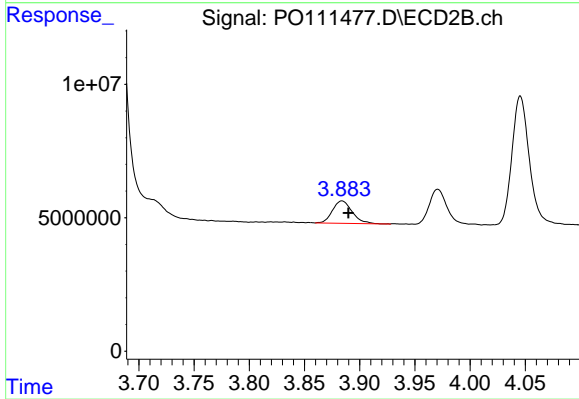
#7 AR-1016-5

R.T.: 5.202 min
 Delta R.T.: -0.005 min
 Response: 76234498
 Conc: 493.75 ng/ml



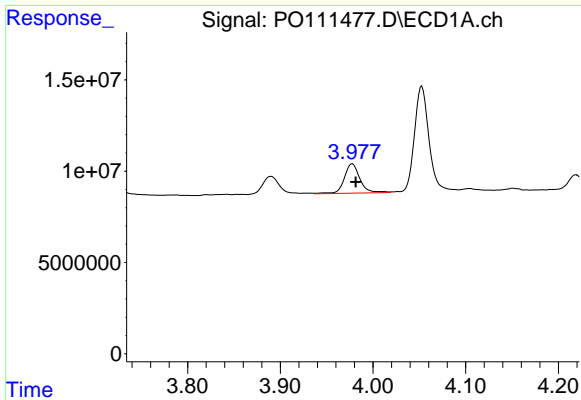
#8 AR-1221-1

R.T.: 3.890 min
 Delta R.T.: -0.005 min
 Response: 12375560
 Conc: 142.07 ng/ml



#8 AR-1221-1

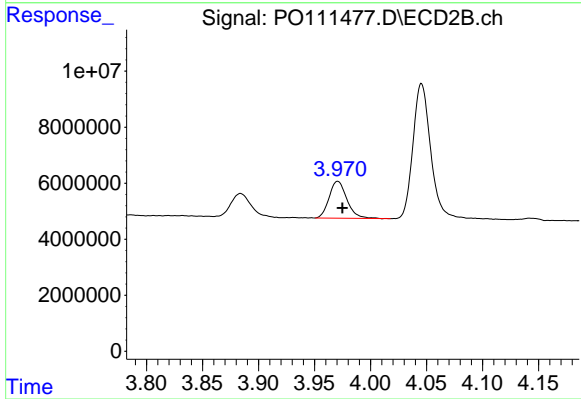
R.T.: 3.884 min
 Delta R.T.: -0.006 min
 Response: 10377937
 Conc: 140.54 ng/ml



#9 AR-1221-2

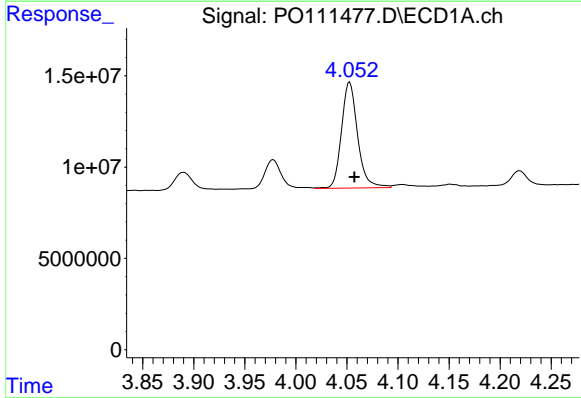
R.T.: 3.978 min
 Delta R.T.: -0.003 min
 Response: 18810327
 Conc: 295.28 ng/ml

Instrument :
 ECD_O
 ClientSampleId :
 AR1660CCC500



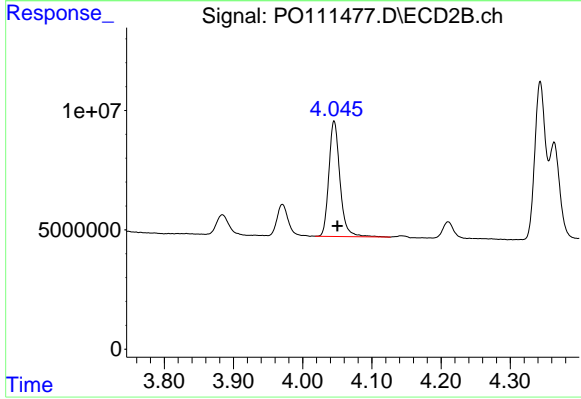
#9 AR-1221-2

R.T.: 3.971 min
 Delta R.T.: -0.004 min
 Response: 14598793
 Conc: 268.29 ng/ml



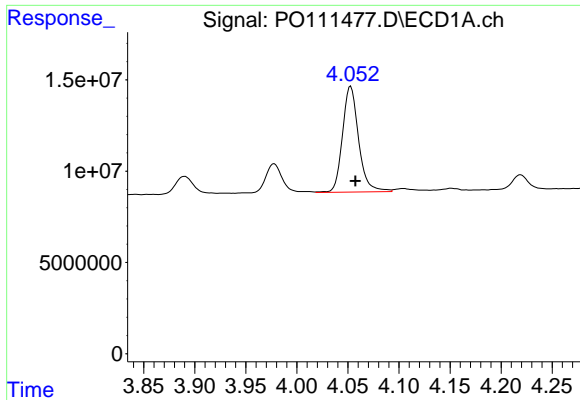
#10 AR-1221-3

R.T.: 4.053 min
 Delta R.T.: -0.005 min
 Response: 63618348
 Conc: 330.78 ng/ml



#10 AR-1221-3

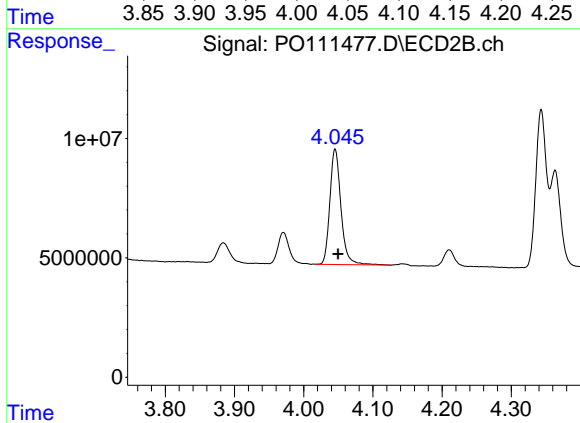
R.T.: 4.046 min
 Delta R.T.: -0.005 min
 Response: 53835389
 Conc: 322.17 ng/ml



#11 AR-1232-1

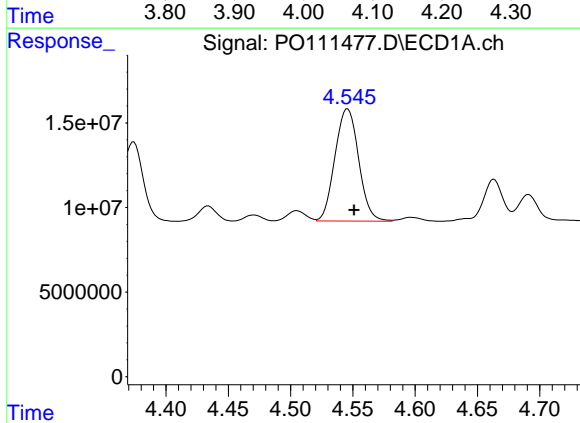
R.T.: 4.053 min
 Delta R.T.: -0.005 min
 Response: 63618348
 Conc: 415.33 ng/ml

Instrument :
 ECD_O
 ClientSampleId :
 AR1660CCC500



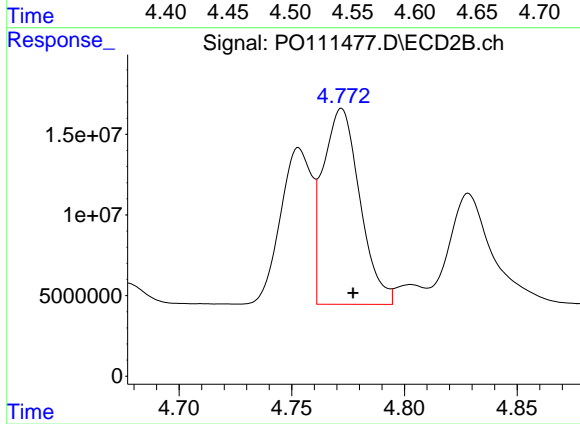
#11 AR-1232-1

R.T.: 4.046 min
 Delta R.T.: -0.005 min
 Response: 53835389
 Conc: 412.23 ng/ml



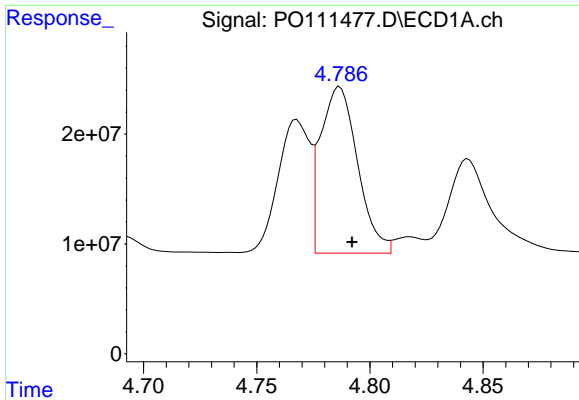
#12 AR-1232-2

R.T.: 4.546 min
 Delta R.T.: -0.005 min
 Response: 87960880
 Conc: 1073.39 ng/ml



#12 AR-1232-2

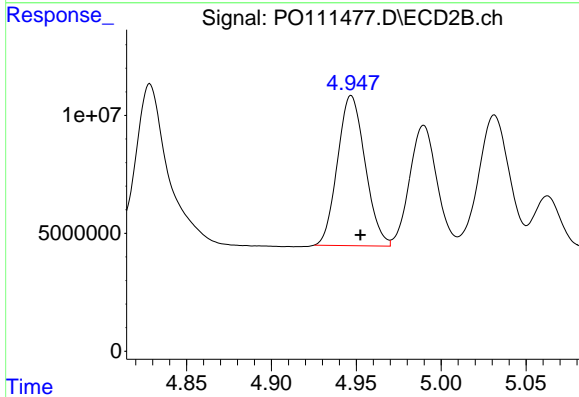
R.T.: 4.772 min
 Delta R.T.: -0.005 min
 Response: 138474375
 Conc: 1055.76 ng/ml



#13 AR-1232-3

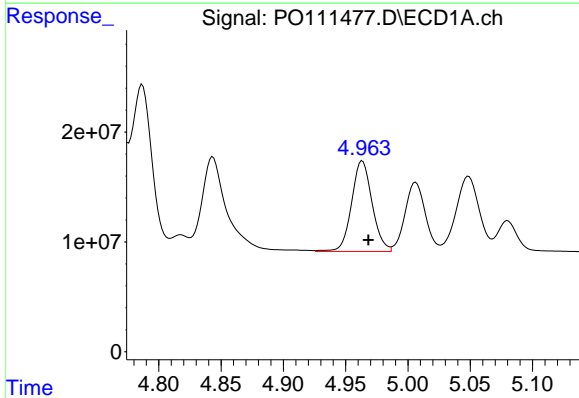
R.T.: 4.787 min
 Delta R.T.: -0.006 min
 Response: 172856243
 Conc: 1130.32 ng/ml

Instrument :
 ECD_O
 ClientSampleId :
 AR1660CCC500



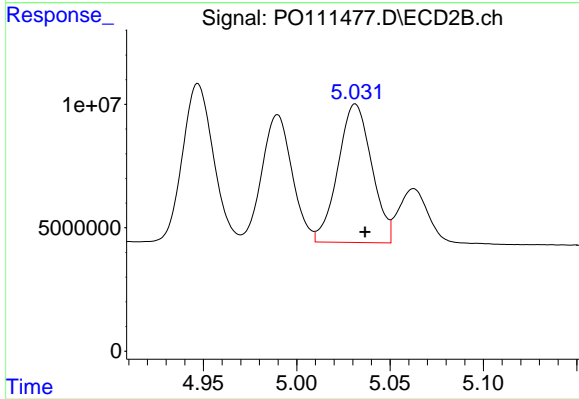
#13 AR-1232-3

R.T.: 4.947 min
 Delta R.T.: -0.005 min
 Response: 71994242
 Conc: 1057.62 ng/ml



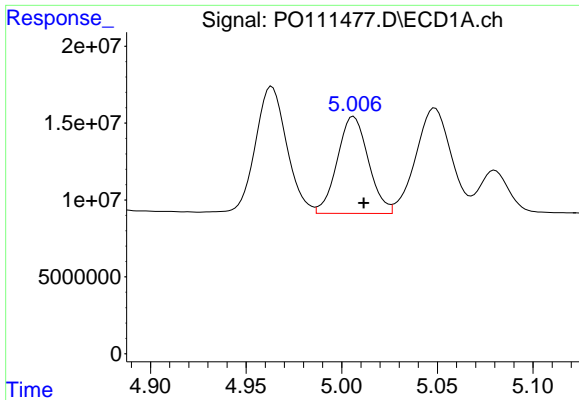
#14 AR-1232-4

R.T.: 4.963 min
 Delta R.T.: -0.005 min
 Response: 95135460
 Conc: 1156.64 ng/ml



#14 AR-1232-4

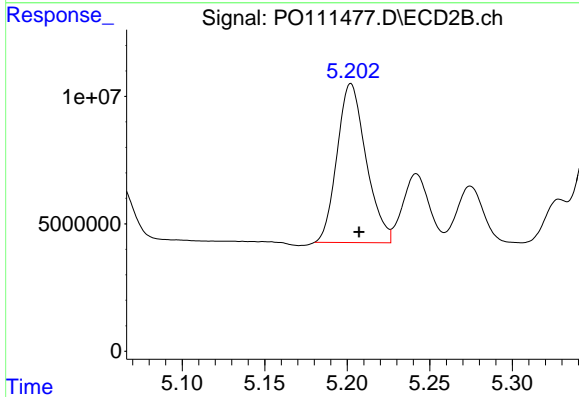
R.T.: 5.031 min
 Delta R.T.: -0.005 min
 Response: 70607501
 Conc: 1144.81 ng/ml



#15 AR-1232-5

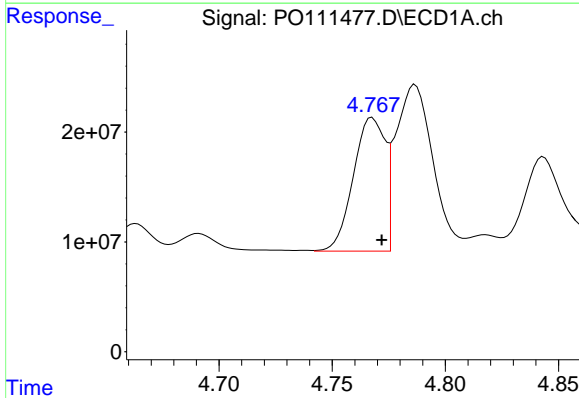
R.T.: 5.006 min
 Delta R.T.: -0.005 min
 Response: 71503095
 Conc: 1317.80 ng/ml

Instrument :
 ECD_O
 ClientSampleId :
 AR1660CCC500



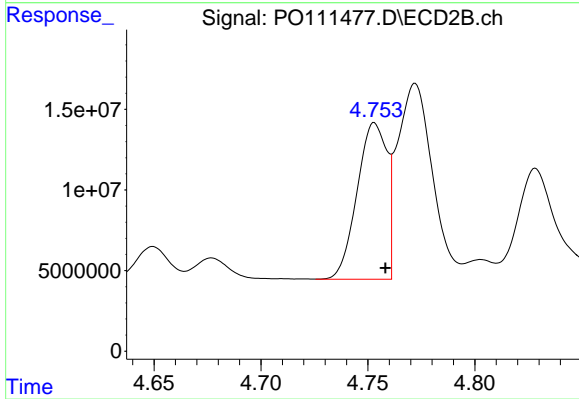
#15 AR-1232-5

R.T.: 5.202 min
 Delta R.T.: -0.005 min
 Response: 76234498
 Conc: 1159.77 ng/ml



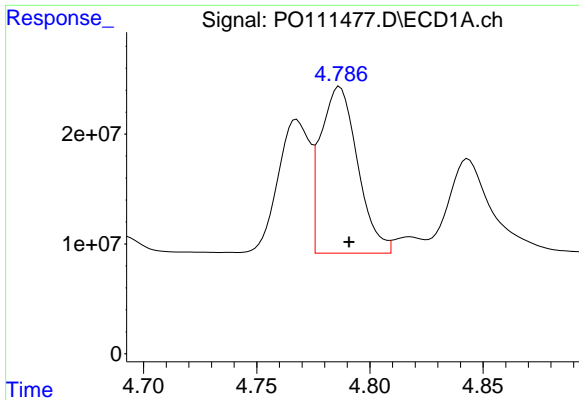
#16 AR-1242-1

R.T.: 4.768 min
 Delta R.T.: -0.004 min
 Response: 118590003
 Conc: 620.24 ng/ml



#16 AR-1242-1

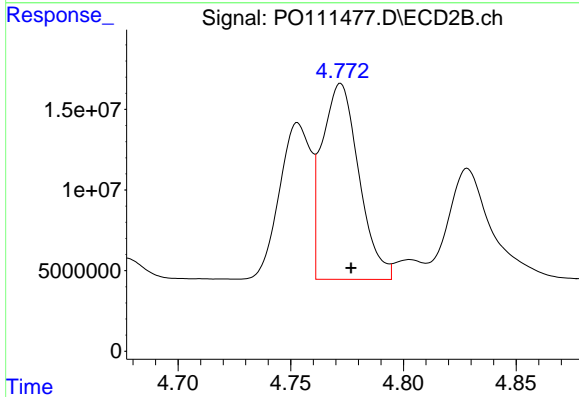
R.T.: 4.753 min
 Delta R.T.: -0.005 min
 Response: 93946883
 Conc: 583.13 ng/ml



#17 AR-1242-2

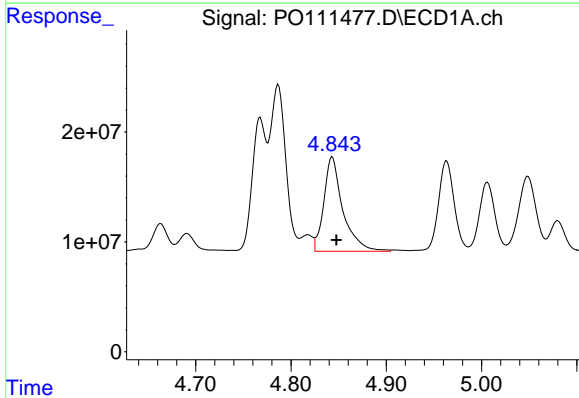
R.T.: 4.787 min
 Delta R.T.: -0.004 min
 Response: 172856243
 Conc: 635.47 ng/ml

Instrument :
 ECD_O
 ClientSampleId :
 AR1660CCC500



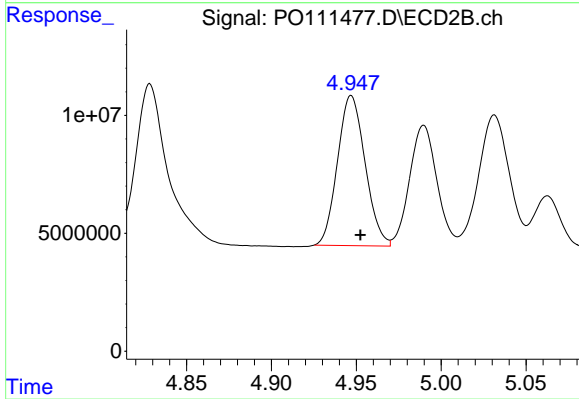
#17 AR-1242-2

R.T.: 4.772 min
 Delta R.T.: -0.005 min
 Response: 138474375
 Conc: 590.24 ng/ml



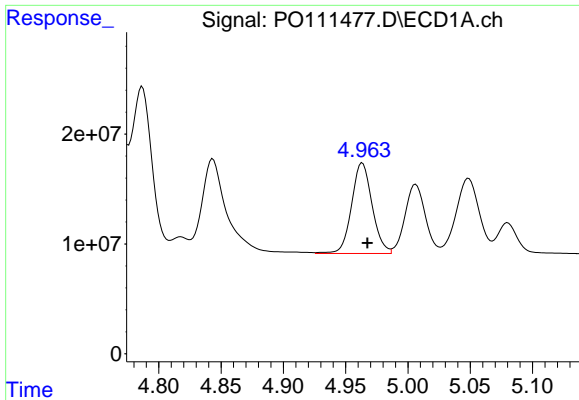
#18 AR-1242-3

R.T.: 4.843 min
 Delta R.T.: -0.004 min
 Response: 119496370
 Conc: 642.50 ng/ml



#18 AR-1242-3

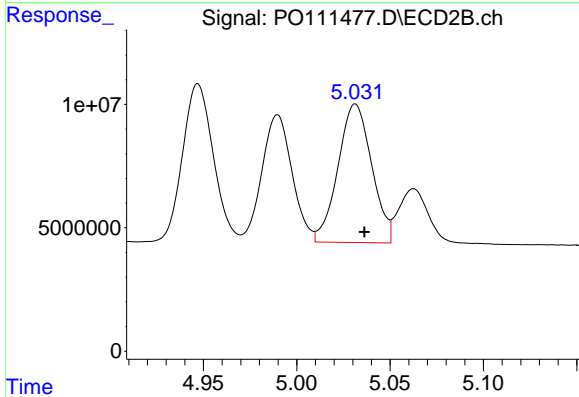
R.T.: 4.947 min
 Delta R.T.: -0.005 min
 Response: 71994242
 Conc: 582.39 ng/ml



#19 AR-1242-4

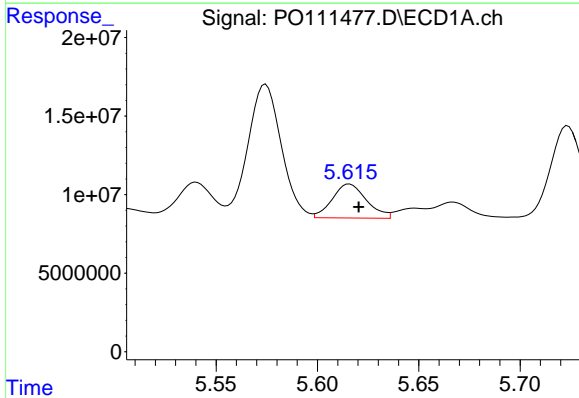
R.T.: 4.963 min
 Delta R.T.: -0.004 min
 Response: 95135460
 Conc: 643.68 ng/ml

Instrument :
 ECD_O
 ClientSampleId :
 AR1660CCC500



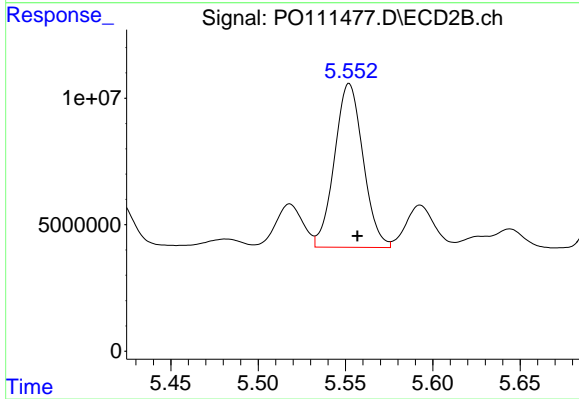
#19 AR-1242-4

R.T.: 5.031 min
 Delta R.T.: -0.005 min
 Response: 70607501
 Conc: 571.19 ng/ml



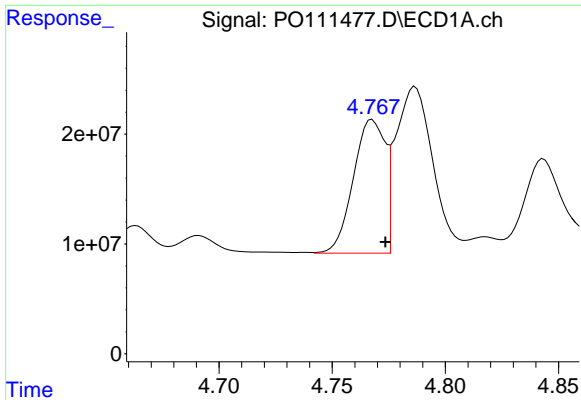
#20 AR-1242-5

R.T.: 5.616 min
 Delta R.T.: -0.005 min
 Response: 25496543
 Conc: 163.92 ng/ml



#20 AR-1242-5

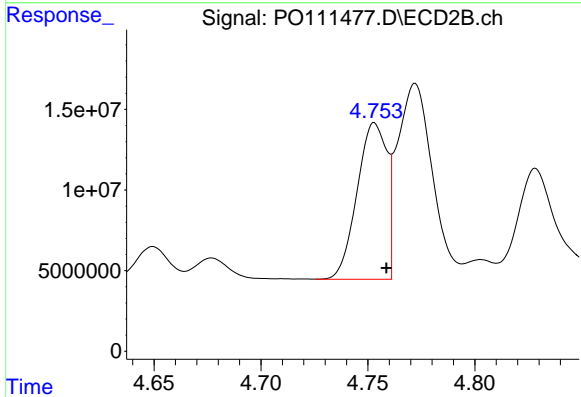
R.T.: 5.552 min
 Delta R.T.: -0.005 min
 Response: 73841287
 Conc: 485.84 ng/ml



#21 AR-1248-1

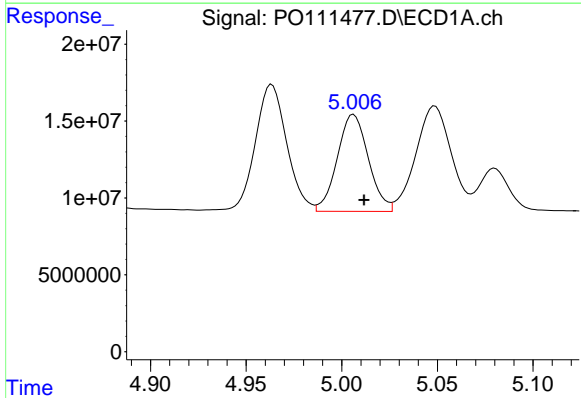
R.T.: 4.768 min
 Delta R.T.: -0.006 min
 Response: 118590003
 Conc: 774.26 ng/ml

Instrument :
 ECD_O
 ClientSampleId :
 AR1660CCC500



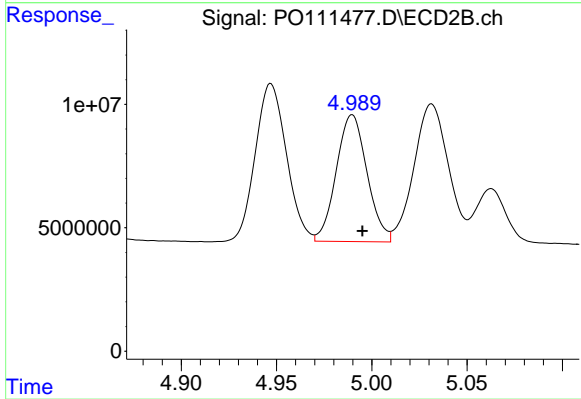
#21 AR-1248-1

R.T.: 4.753 min
 Delta R.T.: -0.005 min
 Response: 93946883
 Conc: 724.18 ng/ml



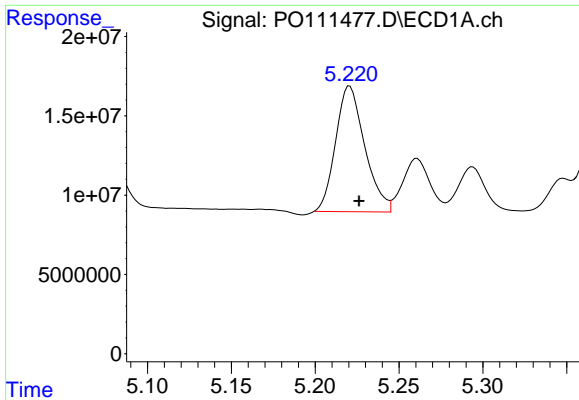
#22 AR-1248-2

R.T.: 5.006 min
 Delta R.T.: -0.005 min
 Response: 71503095
 Conc: 356.59 ng/ml



#22 AR-1248-2

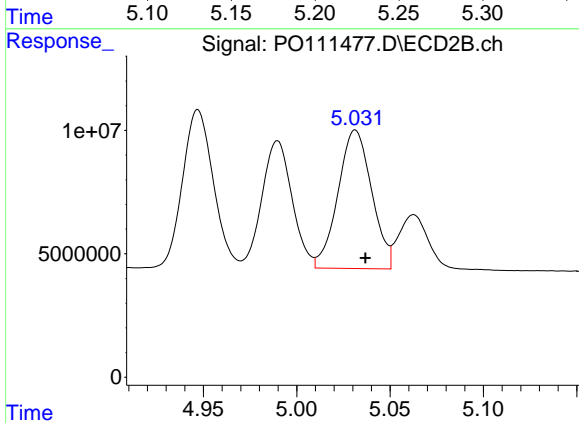
R.T.: 4.990 min
 Delta R.T.: -0.005 min
 Response: 57799429
 Conc: 328.61 ng/ml



#23 AR-1248-3

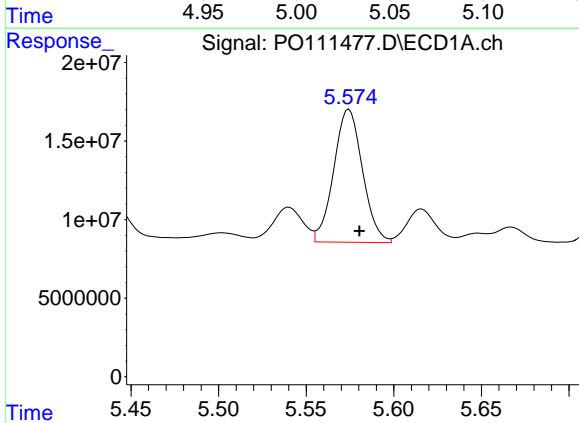
R.T.: 5.221 min
 Delta R.T.: -0.006 min
 Response: 95730210
 Conc: 373.94 ng/ml

Instrument :
 ECD_O
 ClientSampleId :
 AR1660CCC500



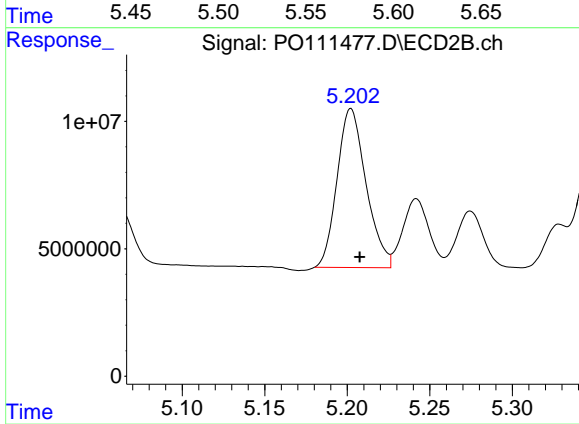
#23 AR-1248-3

R.T.: 5.031 min
 Delta R.T.: -0.005 min
 Response: 70607501
 Conc: 376.34 ng/ml



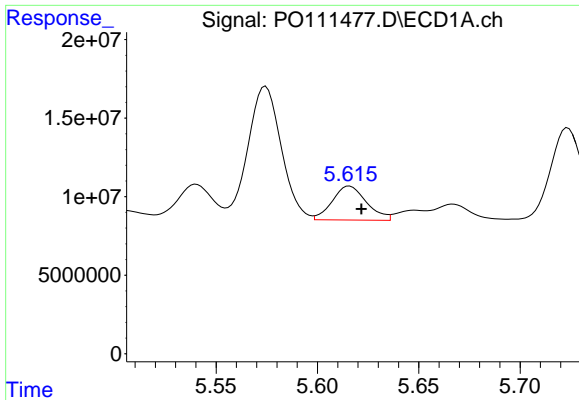
#24 AR-1248-4

R.T.: 5.574 min
 Delta R.T.: -0.006 min
 Response: 96896202
 Conc: 267.54 ng/ml



#24 AR-1248-4

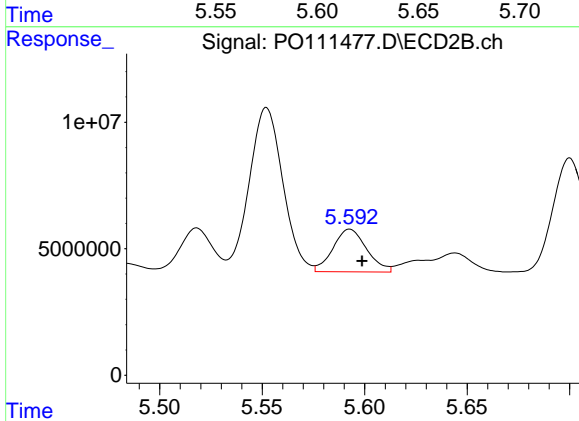
R.T.: 5.202 min
 Delta R.T.: -0.005 min
 Response: 76234498
 Conc: 346.77 ng/ml



#25 AR-1248-5

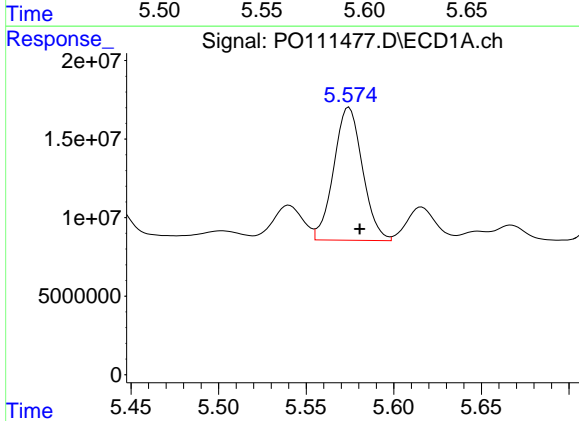
R.T.: 5.616 min
 Delta R.T.: -0.006 min
 Response: 25496543
 Conc: 97.29 ng/ml

Instrument :
 ECD_O
 ClientSampleId :
 AR1660CCC500



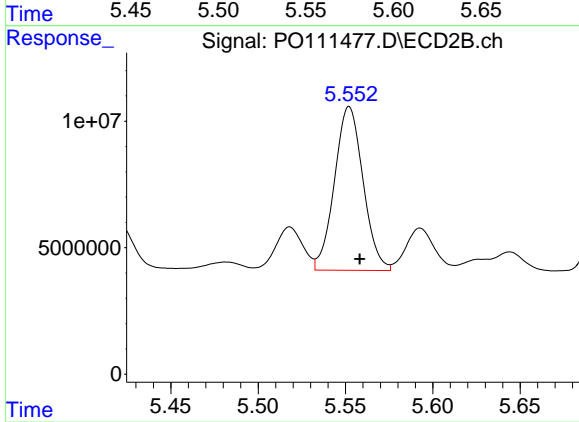
#25 AR-1248-5

R.T.: 5.593 min
 Delta R.T.: -0.006 min
 Response: 19326468
 Conc: 88.52 ng/ml



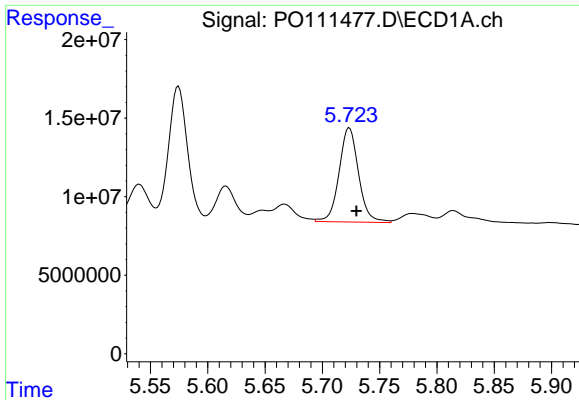
#26 AR-1254-1

R.T.: 5.574 min
 Delta R.T.: -0.006 min
 Response: 96896202
 Conc: 255.28 ng/ml



#26 AR-1254-1

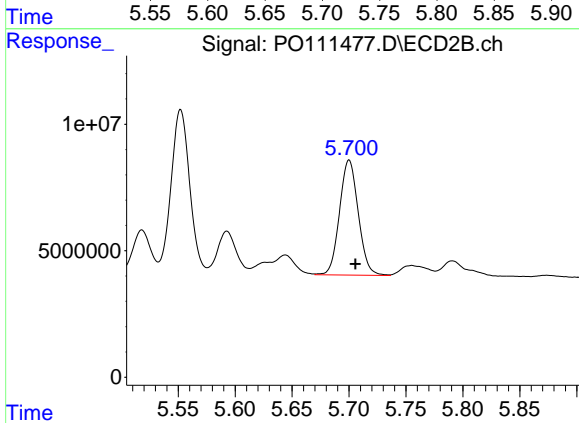
R.T.: 5.552 min
 Delta R.T.: -0.006 min
 Response: 73841287
 Conc: 227.88 ng/ml



#27 AR-1254-2

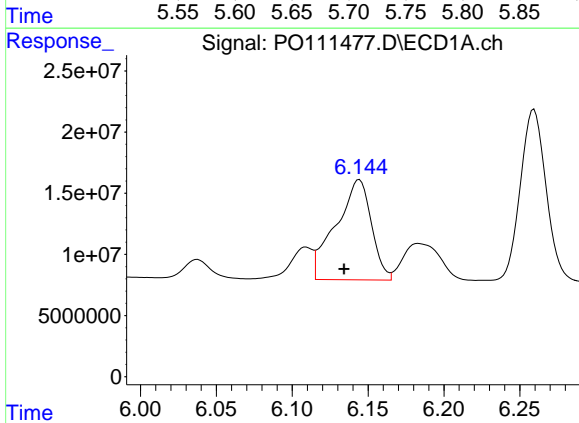
R.T.: 5.724 min
 Delta R.T.: -0.006 min
 Response: 70910640
 Conc: 217.00 ng/ml

Instrument :
 ECD_O
 ClientSampleId :
 AR1660CCC500



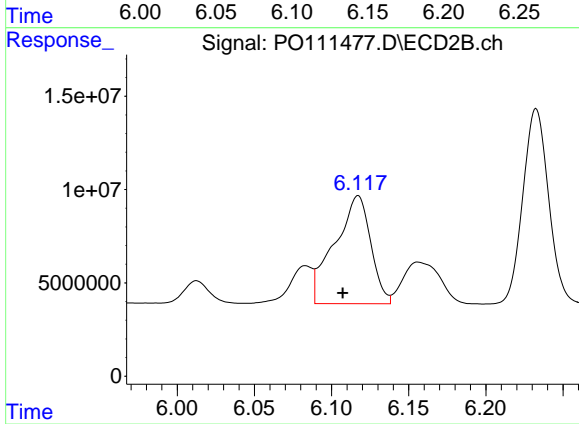
#27 AR-1254-2

R.T.: 5.700 min
 Delta R.T.: -0.005 min
 Response: 52121767
 Conc: 184.02 ng/ml



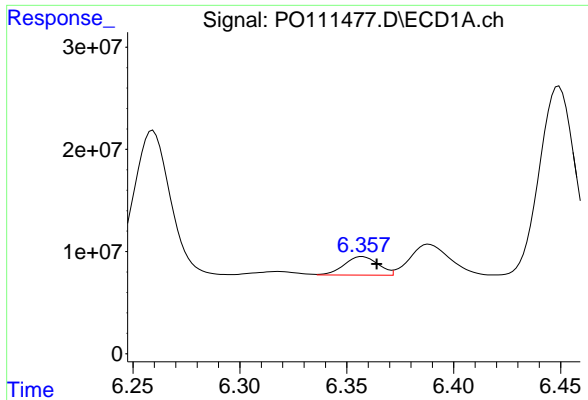
#28 AR-1254-3

R.T.: 6.144 min
 Delta R.T.: 0.010 min
 Response: 133637921
 Conc: 254.00 ng/ml



#28 AR-1254-3

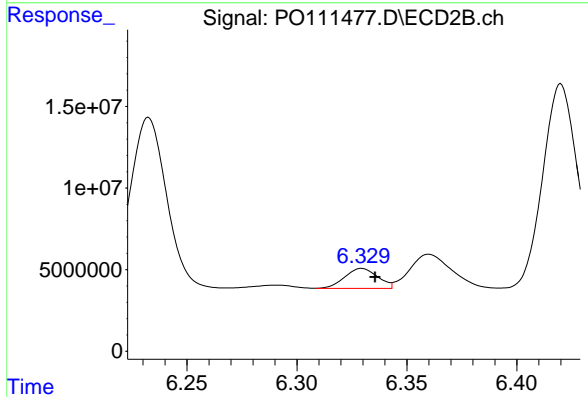
R.T.: 6.117 min
 Delta R.T.: 0.010 min
 Response: 94139850
 Conc: 218.19 ng/ml



#29 AR-1254-4

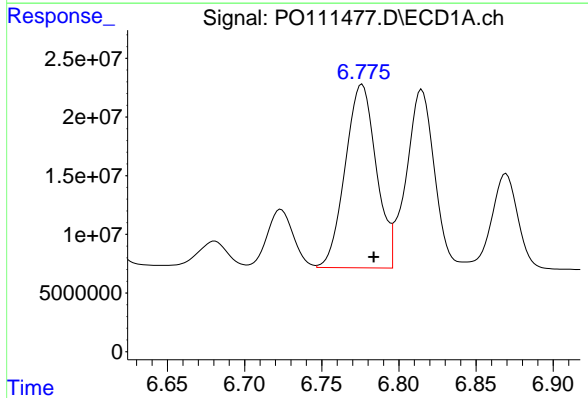
R.T.: 6.357 min
 Delta R.T.: -0.007 min
 Response: 20058898
 Conc: 59.69 ng/ml

Instrument :
 ECD_O
 ClientSampleId :
 AR1660CCC500



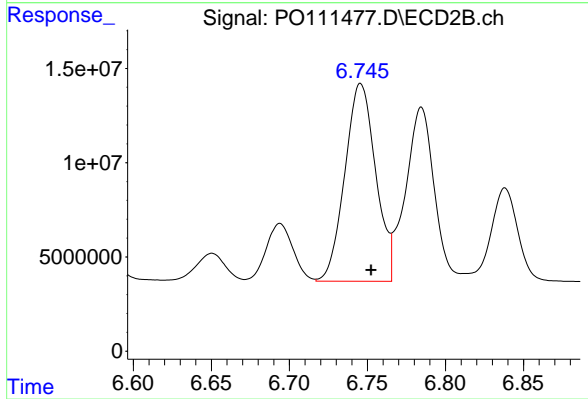
#29 AR-1254-4

R.T.: 6.330 min
 Delta R.T.: -0.006 min
 Response: 12727562
 Conc: 51.46 ng/ml



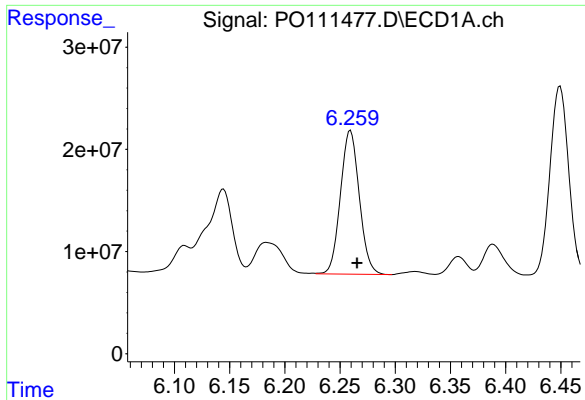
#30 AR-1254-5

R.T.: 6.776 min
 Delta R.T.: -0.008 min
 Response: 219078187
 Conc: 461.75 ng/ml



#30 AR-1254-5

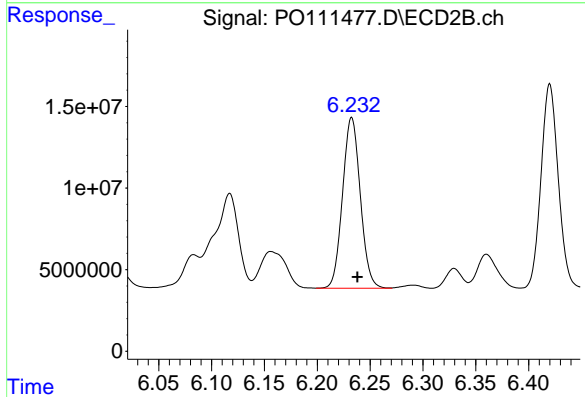
R.T.: 6.746 min
 Delta R.T.: -0.007 min
 Response: 144355564
 Conc: 417.28 ng/ml



#31 AR-1260-1

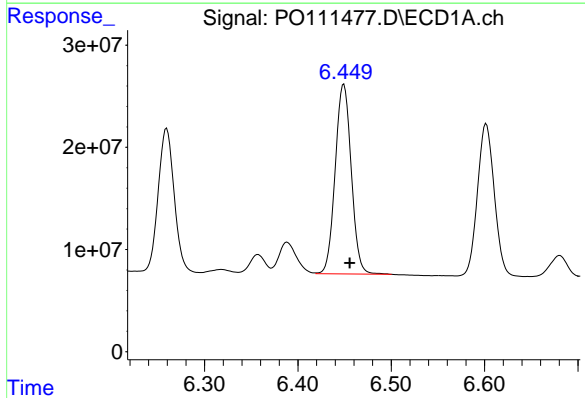
R.T.: 6.259 min
 Delta R.T.: -0.006 min
 Response: 167137140
 Conc: 548.05 ng/ml

Instrument :
 ECD_O
 ClientSampleId :
 AR1660CCC500



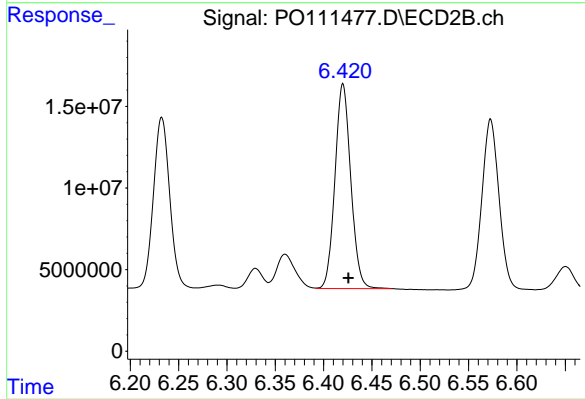
#31 AR-1260-1

R.T.: 6.233 min
 Delta R.T.: -0.005 min
 Response: 122078398
 Conc: 488.53 ng/ml



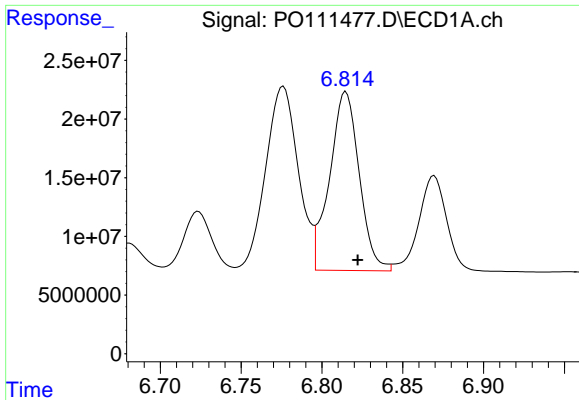
#32 AR-1260-2

R.T.: 6.449 min
 Delta R.T.: -0.006 min
 Response: 220908024
 Conc: 576.86 ng/ml



#32 AR-1260-2

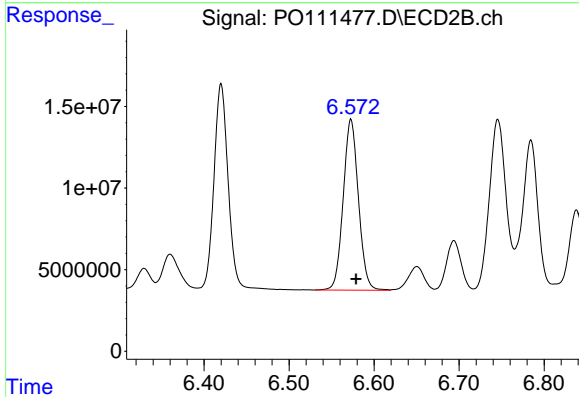
R.T.: 6.420 min
 Delta R.T.: -0.006 min
 Response: 142906239
 Conc: 485.60 ng/ml



#33 AR-1260-3

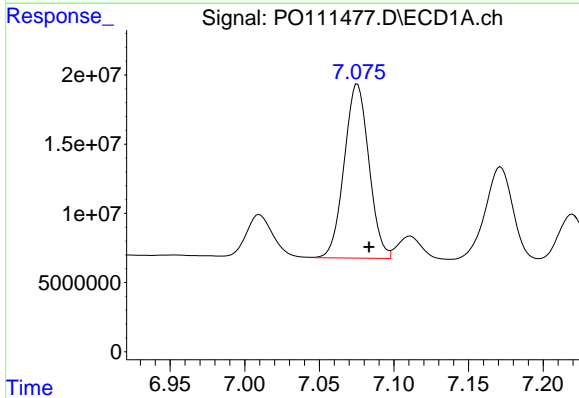
R.T.: 6.815 min
 Delta R.T.: -0.007 min
 Response: 194283357
 Conc: 557.34 ng/ml

Instrument :
 ECD_O
 ClientSampleId :
 AR1660CCC500



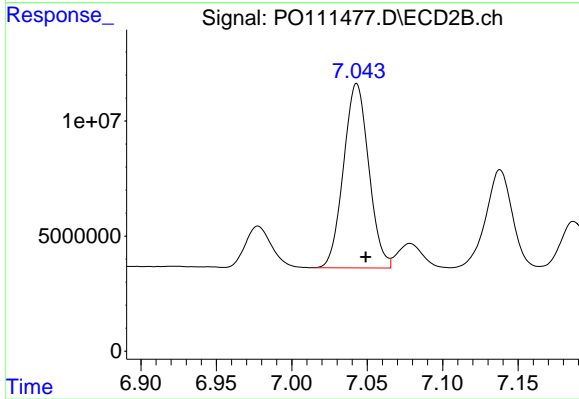
#33 AR-1260-3

R.T.: 6.573 min
 Delta R.T.: -0.006 min
 Response: 130159555
 Conc: 453.96 ng/ml



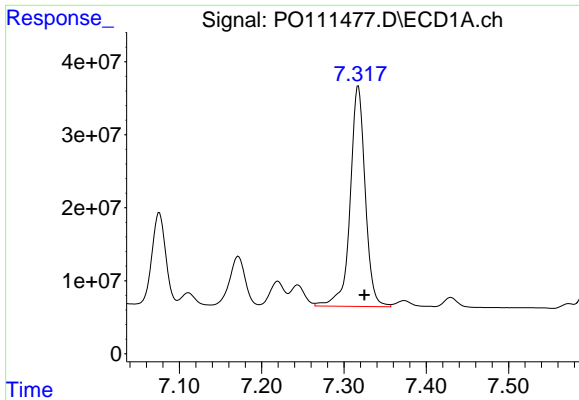
#34 AR-1260-4

R.T.: 7.076 min
 Delta R.T.: -0.008 min
 Response: 144960609
 Conc: 517.79 ng/ml



#34 AR-1260-4

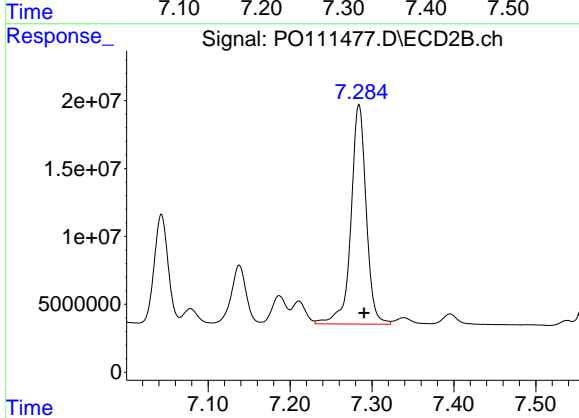
R.T.: 7.043 min
 Delta R.T.: -0.006 min
 Response: 93373298
 Conc: 465.09 ng/ml



#35 AR-1260-5

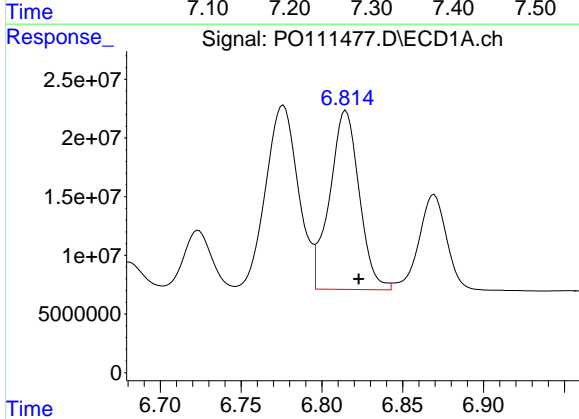
R.T.: 7.317 min
 Delta R.T.: -0.007 min
 Response: 383443519
 Conc: 532.63 ng/ml

Instrument :
 ECD_O
 ClientSampleId :
 AR1660CCC500



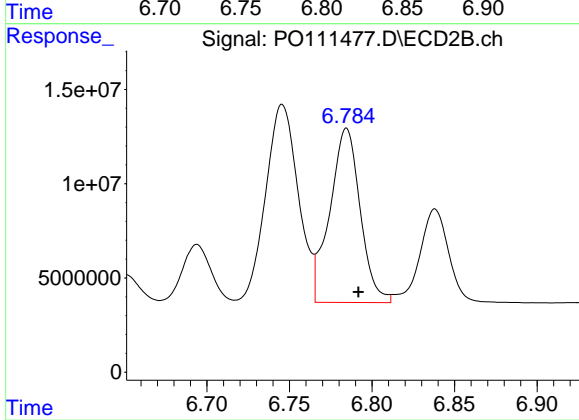
#35 AR-1260-5

R.T.: 7.284 min
 Delta R.T.: -0.006 min
 Response: 209314675
 Conc: 455.42 ng/ml



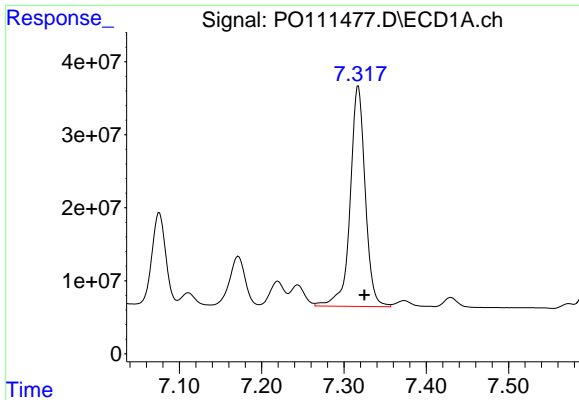
#36 AR-1262-1

R.T.: 6.815 min
 Delta R.T.: -0.008 min
 Response: 194283357
 Conc: 399.21 ng/ml



#36 AR-1262-1

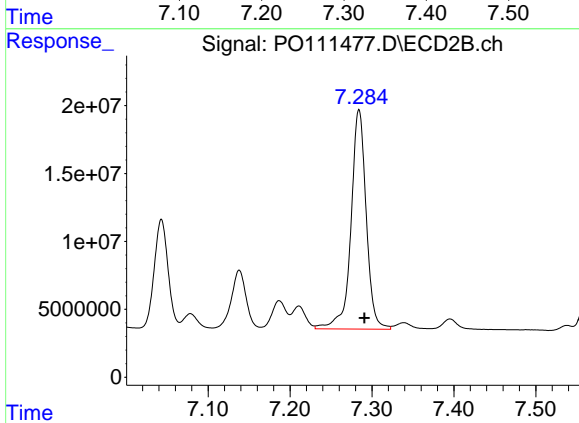
R.T.: 6.785 min
 Delta R.T.: -0.007 min
 Response: 118495114
 Conc: 347.72 ng/ml



#37 AR-1262-2

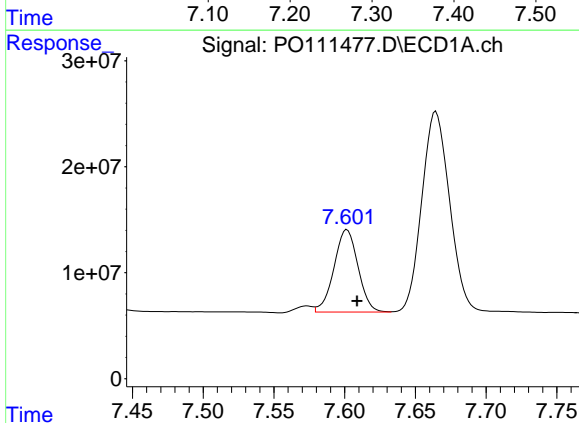
R.T.: 7.317 min
 Delta R.T.: -0.007 min
 Response: 383443519
 Conc: 474.27 ng/ml

Instrument :
 ECD_O
 ClientSampleId :
 AR1660CCC500



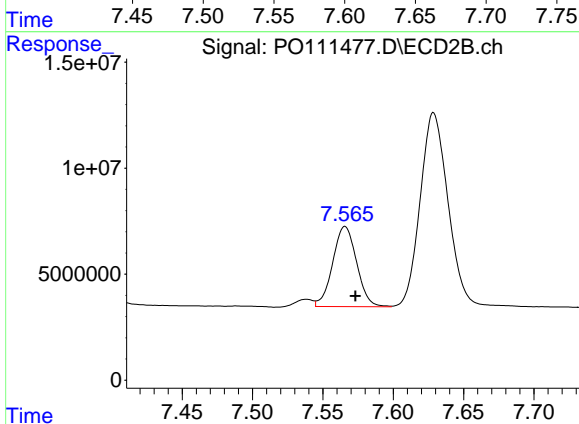
#37 AR-1262-2

R.T.: 7.284 min
 Delta R.T.: -0.006 min
 Response: 209314675
 Conc: 416.25 ng/ml



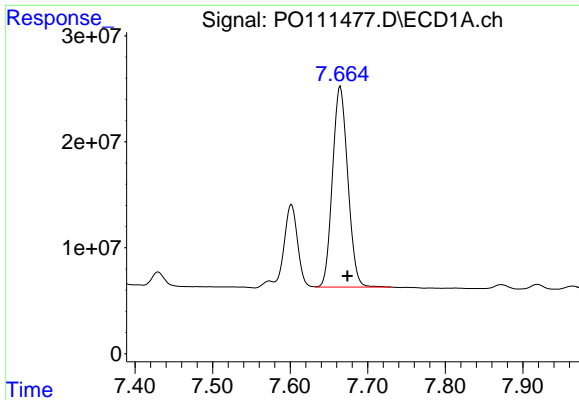
#38 AR-1262-3

R.T.: 7.602 min
 Delta R.T.: -0.007 min
 Response: 92254702
 Conc: 272.73 ng/ml



#38 AR-1262-3

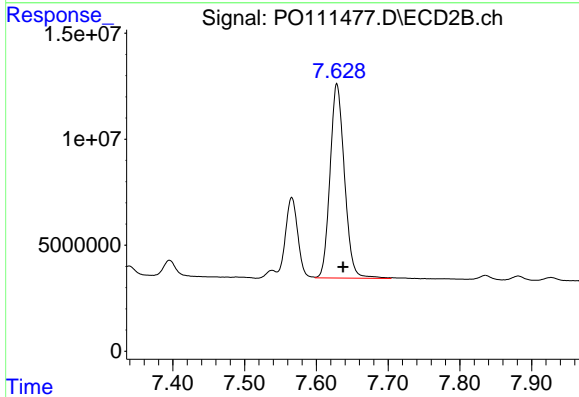
R.T.: 7.566 min
 Delta R.T.: -0.007 min
 Response: 44870803
 Conc: 239.14 ng/ml



#39 AR-1262-4

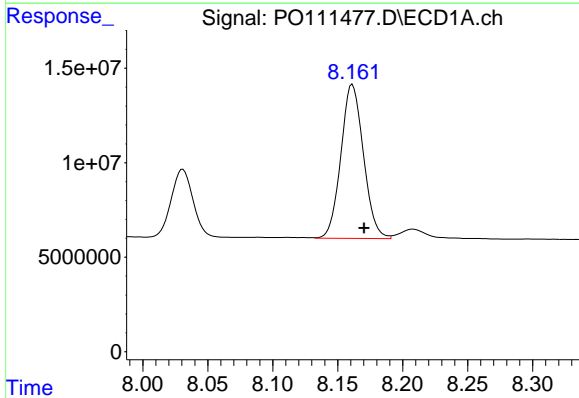
R.T.: 7.665 min
Delta R.T.: -0.009 min
Response: 259687799
Conc: 439.84 ng/ml

Instrument :
ECD_O
ClientSampleId :
AR1660CCC500



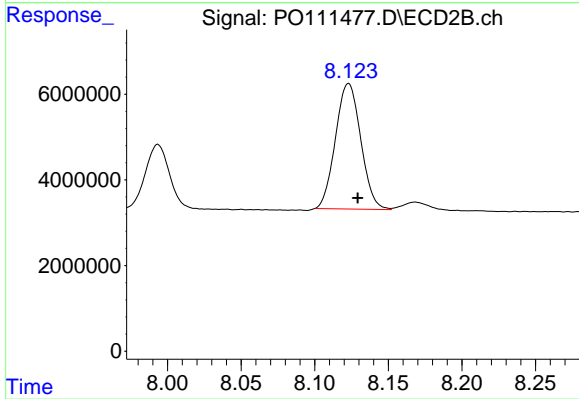
#39 AR-1262-4

R.T.: 7.629 min
Delta R.T.: -0.008 min
Response: 127801634
Conc: 387.01 ng/ml



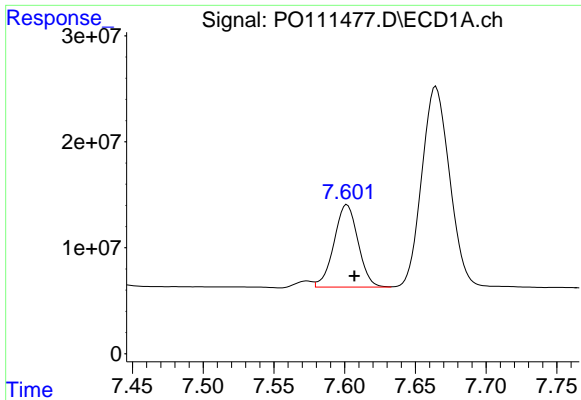
#40 AR-1262-5

R.T.: 8.161 min
Delta R.T.: -0.009 min
Response: 98339570
Conc: 344.79 ng/ml



#40 AR-1262-5

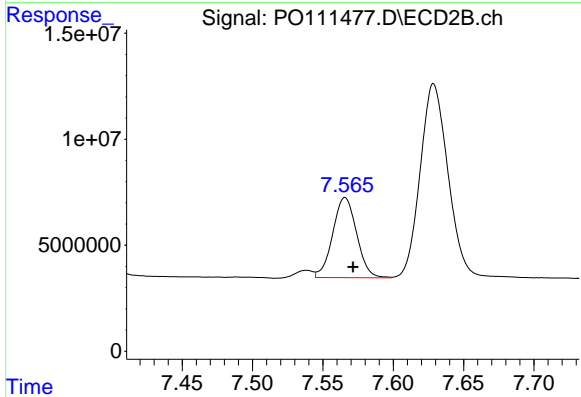
R.T.: 8.123 min
Delta R.T.: -0.006 min
Response: 35062314
Conc: 312.20 ng/ml



#41 AR-1268-1

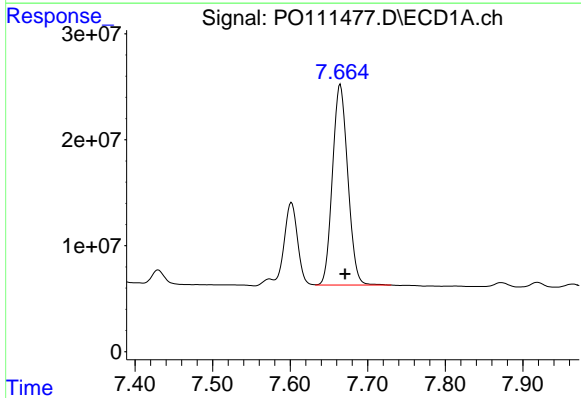
R.T.: 7.602 min
 Delta R.T.: -0.005 min
 Response: 92254702
 Conc: 95.15 ng/ml

Instrument :
 ECD_O
 ClientSampleId :
 AR1660CCC500



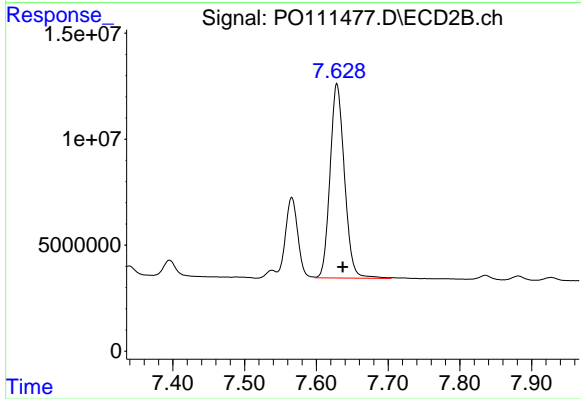
#41 AR-1268-1

R.T.: 7.566 min
 Delta R.T.: -0.006 min
 Response: 44870803
 Conc: 84.65 ng/ml



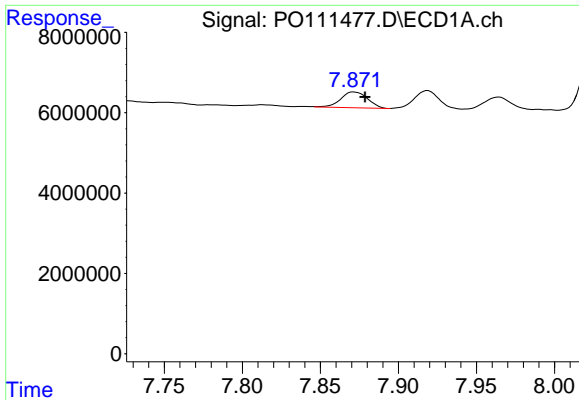
#42 AR-1268-2

R.T.: 7.665 min
 Delta R.T.: -0.007 min
 Response: 259687799
 Conc: 290.96 ng/ml



#42 AR-1268-2

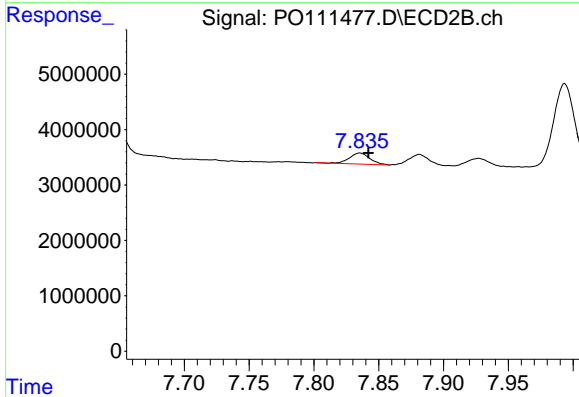
R.T.: 7.629 min
 Delta R.T.: -0.008 min
 Response: 127801634
 Conc: 264.96 ng/ml



#43 AR-1268-3

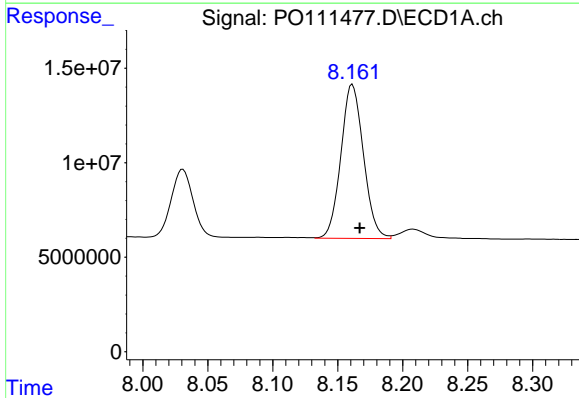
R.T.: 7.872 min
 Delta R.T.: -0.007 min
 Response: 4729226
 Conc: 6.23 ng/ml

Instrument :
 ECD_O
 ClientSampleId :
 AR1660CCC500



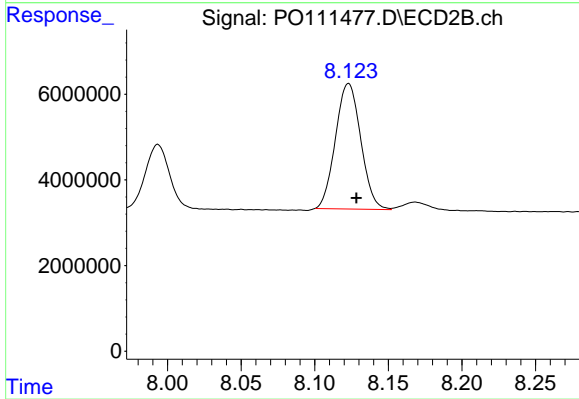
#43 AR-1268-3

R.T.: 7.835 min
 Delta R.T.: -0.007 min
 Response: 2178917
 Conc: 6.25 ng/ml



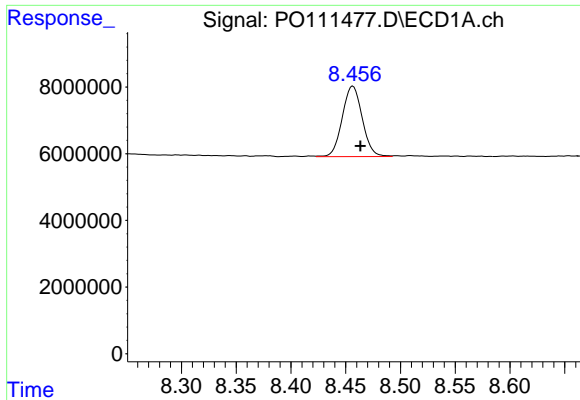
#44 AR-1268-4

R.T.: 8.161 min
 Delta R.T.: -0.006 min
 Response: 98339570
 Conc: 301.12 ng/ml



#44 AR-1268-4

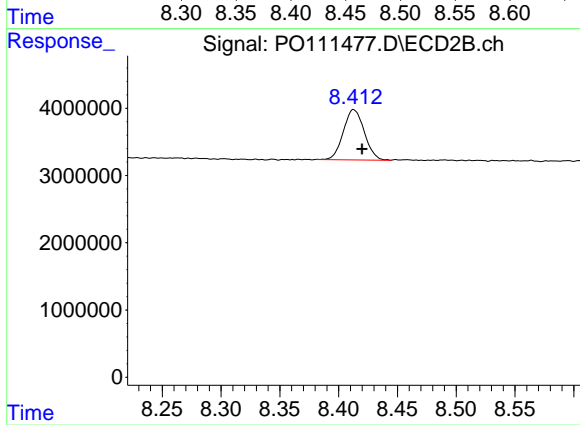
R.T.: 8.123 min
 Delta R.T.: -0.005 min
 Response: 35062314
 Conc: 275.50 ng/ml



#45 AR-1268-5

R.T.: 8.457 min
 Delta R.T.: -0.007 min
 Response: 26812053
 Conc: 12.42 ng/ml

Instrument :
 ECD_O
 ClientSampleId :
 AR1660CCC500



#45 AR-1268-5

R.T.: 8.413 min
 Delta R.T.: -0.007 min
 Response: 9303070
 Conc: 12.36 ng/ml