

Data Path : Z:\pestpcbsrv\HPCHEM1\ECD\_0\Data\P0060523\  
 Data File : P0095449.D  
 Signal(s) : Signal #1: ECD1A.ch Signal #2: ECD2B.ch  
 Acq On : 05 Jun 2023 10:22  
 Operator : YP/AJ  
 Sample : PB153170BS  
 Misc :  
 ALS Vial : 8 Sample Multiplier: 1

Instrument :  
 ECD\_0  
 ClientSampleId :  
 PB153170BS

Integration File signal 1: autoint1.e  
 Integration File signal 2: autoint2.e  
 Quant Time: Jun 05 21:10:02 2023  
 Quant Method : Z:\pestpcbsrv\HPCHEM1\ECD\_0\methods\P0060123.M  
 Quant Title : GC EXTRACTABLES  
 QLast Update : Fri Jun 02 06:53:15 2023  
 Response via : Initial Calibration  
 Integrator: ChemStation

Volume Inj. : 2 µl  
 Signal #1 Phase : ZB-MR2 Signal #2 Phase: ZB-MR2  
 Signal #1 Info : 30Mx0.32mmx 0.50µ Signal #2 Info : 30M x 0.32mm x 0.25µm

Compound	RT#1	RT#2	Resp#1	Resp#2	ng/ml	ng/ml
-----						
System Monitoring Compounds						
1) SA Tetrachlo...	4.441	3.657	82100805	33187771	22.276	21.159
2) SA Decachlor...	10.288	8.716	66387525	33339328	24.529	25.771
Target Compounds						
3) L1 AR-1016-1	5.621	4.752	50062543	22605368	413.068	388.226
4) L1 AR-1016-2	5.644	4.770	69580924	30294705	414.118	395.105
5) L1 AR-1016-3	5.707	4.948	43784245	16642426	416.304	400.891
6) L1 AR-1016-4	5.806	4.991	34982343	14524150	419.893	411.934
7) L1 AR-1016-5	6.103	5.205	35722244	18289352	431.853	411.099
31) L7 AR-1260-1	7.241	6.247	62622628	35813596	422.344	419.805
32) L7 AR-1260-2	7.499	6.436	72488587	40987833	412.973	401.128
33) L7 AR-1260-3	7.861	6.592	48019901	39350025	427.766	420.271
34) L7 AR-1260-4	8.088	7.067	57615814	28668305	422.847	421.460
35) L7 AR-1260-5	8.415	7.309	106.3E6	65338531	417.536	414.322

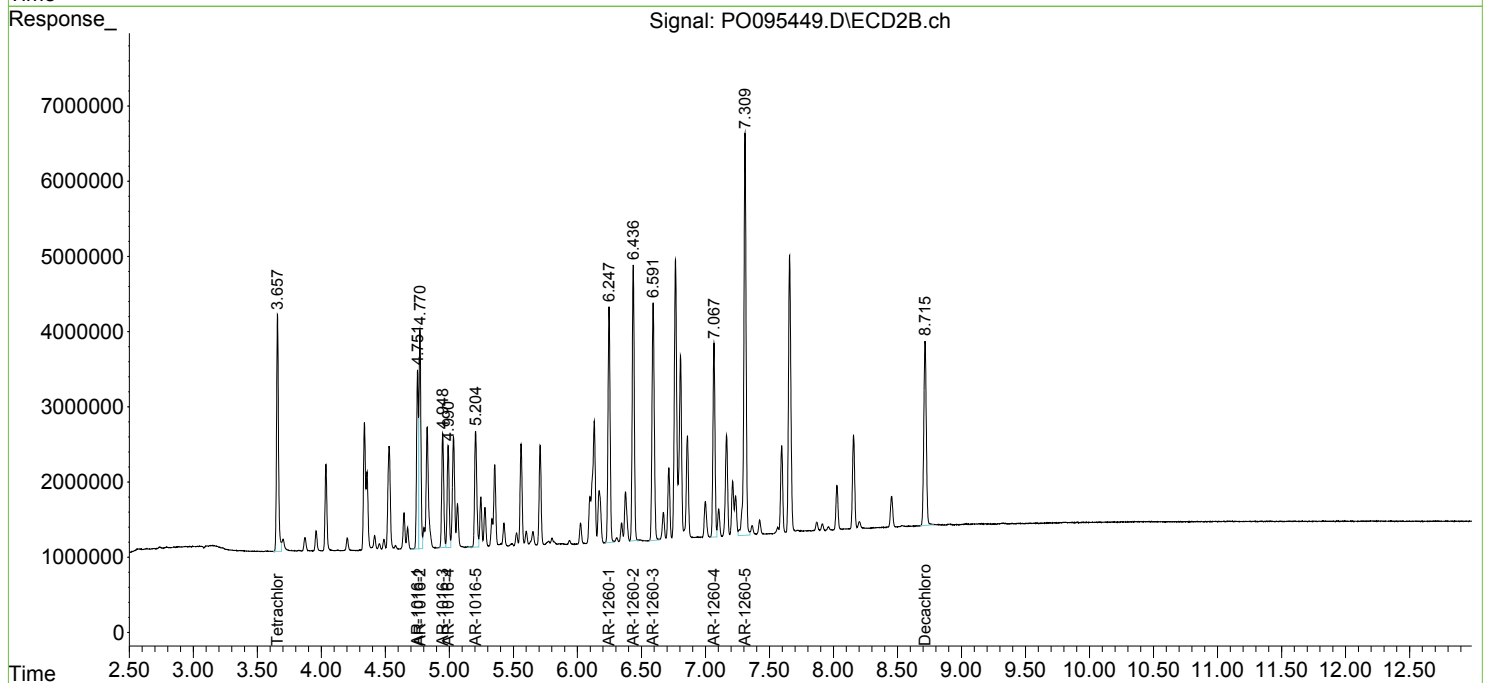
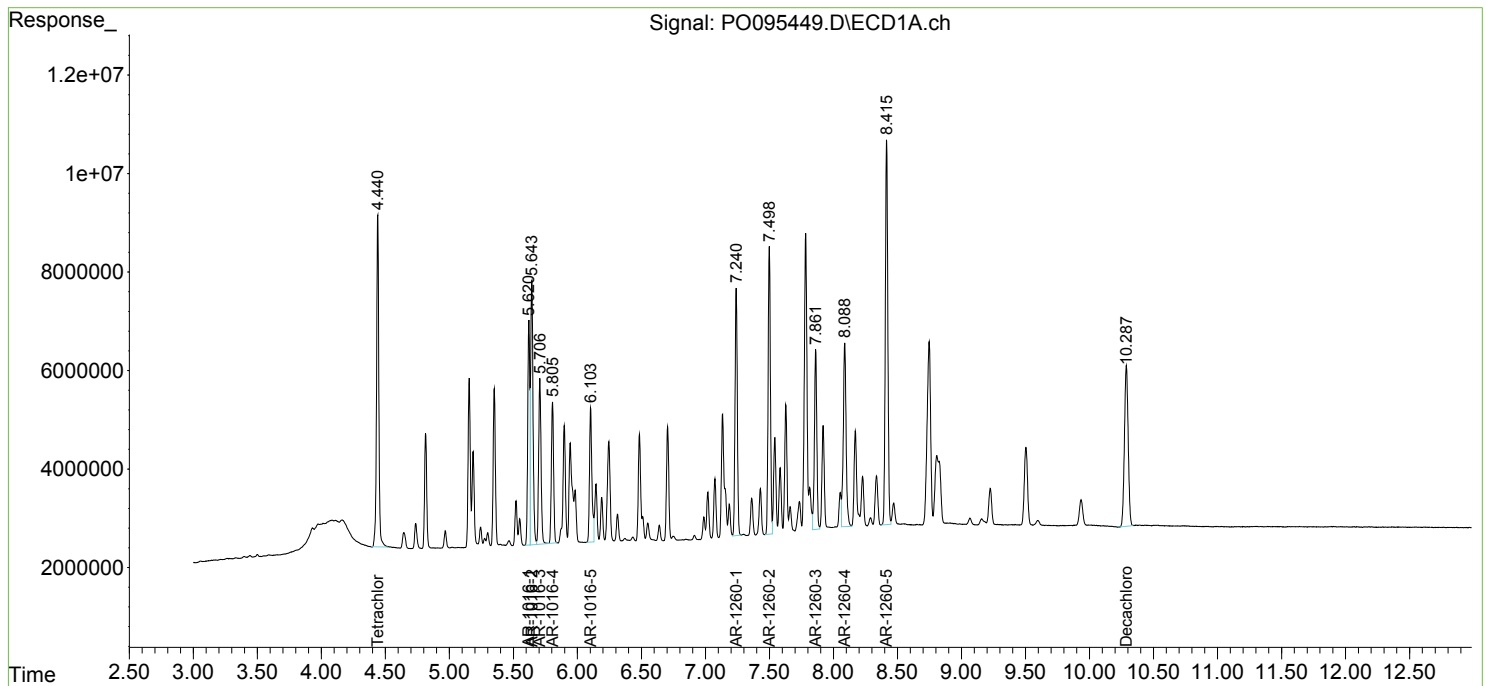
(f)=RT Delta > 1/2 Window (#)=Amounts differ by > 25% (m)=manual int.

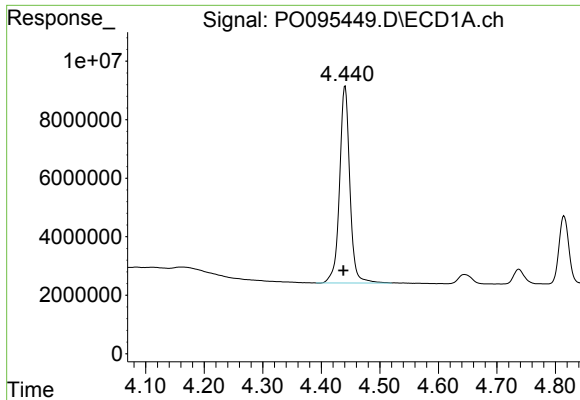
Data Path : Z:\pestpcbsrv\HPCHEM1\ECD\_O\Data\P0060523\  
 Data File : P0095449.D  
 Signal(s) : Signal #1: ECD1A.ch Signal #2: ECD2B.ch  
 Acq On : 05 Jun 2023 10:22  
 Operator : YP/AJ  
 Sample : PB153170BS  
 Misc :  
 ALS Vial : 8 Sample Multiplier: 1

Instrument :  
 ECD\_O  
 ClientSampleId :  
 PB153170BS

Integration File signal 1: autoint1.e  
 Integration File signal 2: autoint2.e  
 Quant Time: Jun 05 21:10:02 2023  
 Quant Method : Z:\pestpcbsrv\HPCHEM1\ECD\_O\methods\P0060123.M  
 Quant Title : GC EXTRACTABLES  
 QLast Update : Fri Jun 02 06:53:15 2023  
 Response via : Initial Calibration  
 Integrator: ChemStation

Volume Inj. : 2 µl  
 Signal #1 Phase : ZB-MR1 Signal #2 Phase: ZB-MR2  
 Signal #1 Info : 30Mx0.32mmx 0.50µ Signal #2 Info : 30M x 0.32mm x 0.25µm

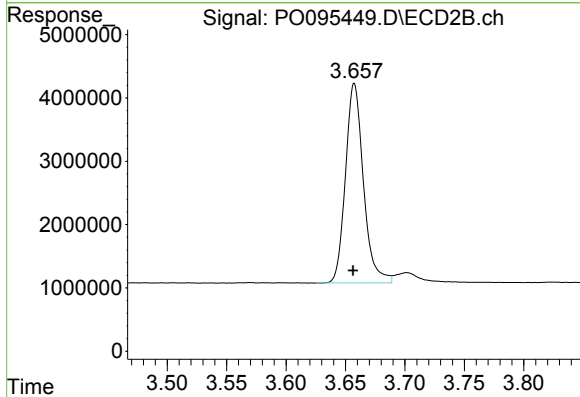




#1 Tetrachloro-m-xylene

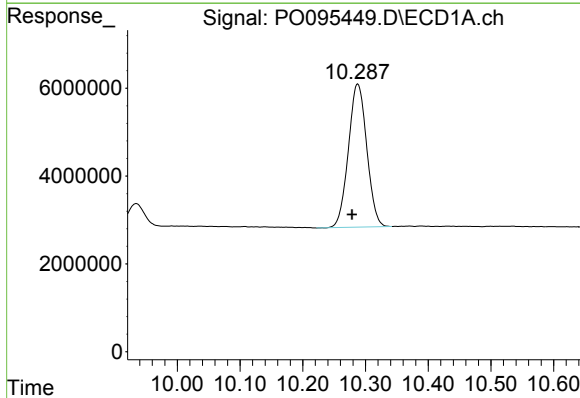
R.T.: 4.441 min  
 Delta R.T.: 0.003 min  
 Response: 82100805  
 Conc: 22.28 ng/ml

Instrument :  
 ECD\_O  
 ClientSampleId :  
 PB153170BS



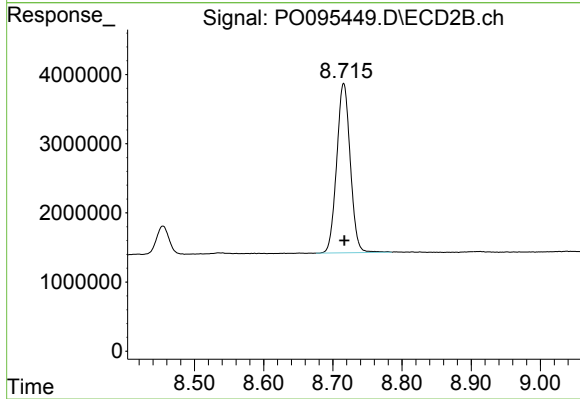
#1 Tetrachloro-m-xylene

R.T.: 3.657 min  
 Delta R.T.: 0.000 min  
 Response: 33187771  
 Conc: 21.16 ng/ml



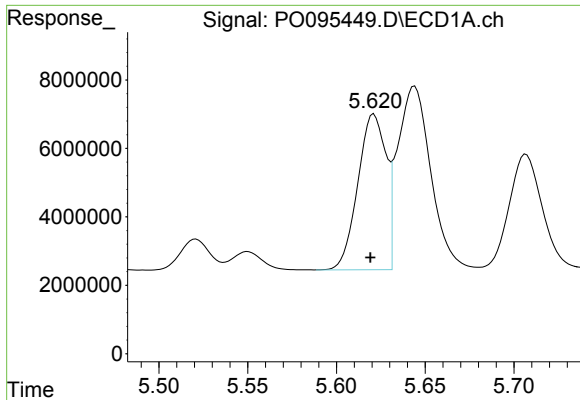
#2 Decachlorobiphenyl

R.T.: 10.288 min  
 Delta R.T.: 0.009 min  
 Response: 66387525  
 Conc: 24.53 ng/ml



#2 Decachlorobiphenyl

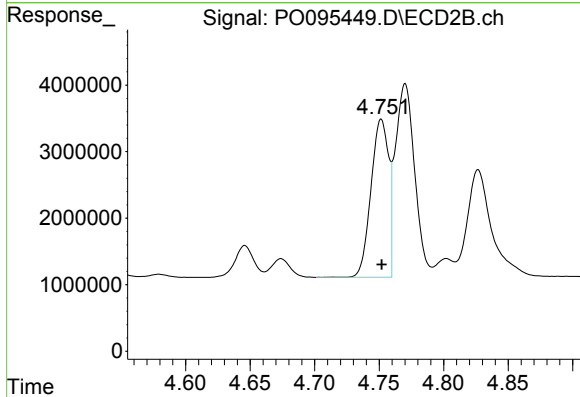
R.T.: 8.716 min  
 Delta R.T.: 0.000 min  
 Response: 33339328  
 Conc: 25.77 ng/ml



#3 AR-1016-1

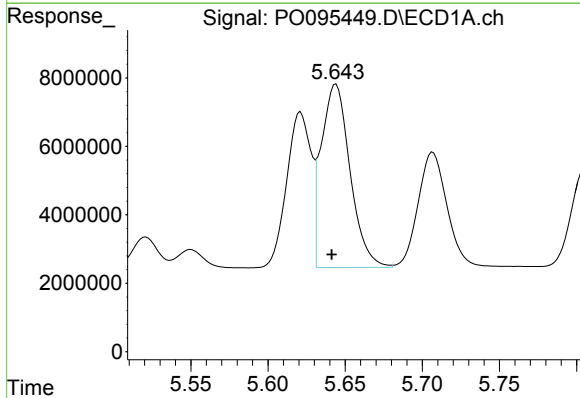
R.T.: 5.621 min  
 Delta R.T.: 0.002 min  
 Response: 50062543  
 Conc: 413.07 ng/ml

Instrument :  
 ECD\_O  
 ClientSampleId :  
 PB153170BS



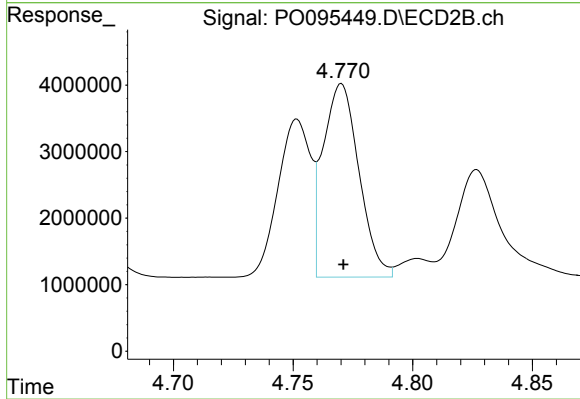
#3 AR-1016-1

R.T.: 4.752 min  
 Delta R.T.: 0.000 min  
 Response: 22605368  
 Conc: 388.23 ng/ml



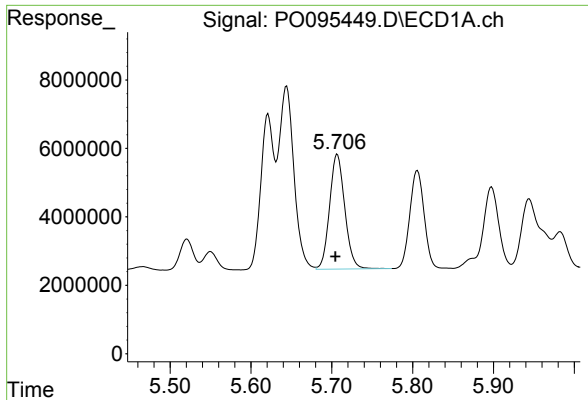
#4 AR-1016-2

R.T.: 5.644 min  
 Delta R.T.: 0.003 min  
 Response: 69580924  
 Conc: 414.12 ng/ml



#4 AR-1016-2

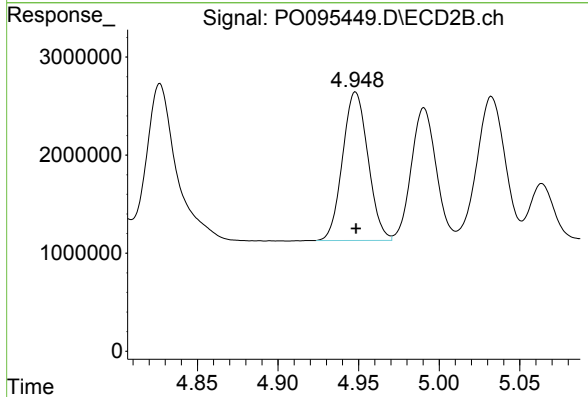
R.T.: 4.770 min  
 Delta R.T.: 0.000 min  
 Response: 30294705  
 Conc: 395.10 ng/ml



#5 AR-1016-3

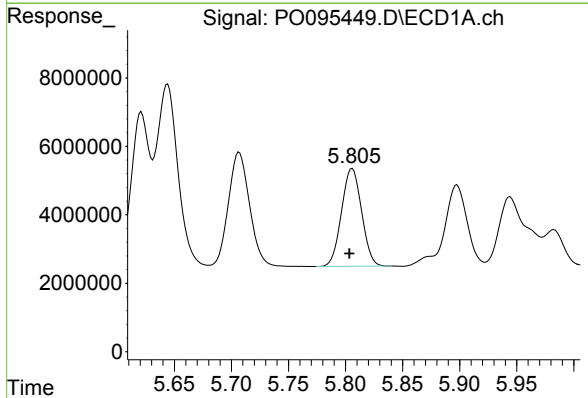
R.T.: 5.707 min  
 Delta R.T.: 0.002 min  
 Response: 43784245  
 Conc: 416.30 ng/ml

Instrument :  
 ECD\_O  
 ClientSampleId :  
 PB153170BS



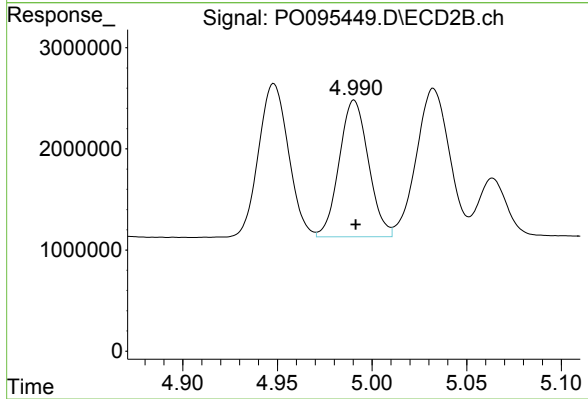
#5 AR-1016-3

R.T.: 4.948 min  
 Delta R.T.: 0.000 min  
 Response: 16642426  
 Conc: 400.89 ng/ml



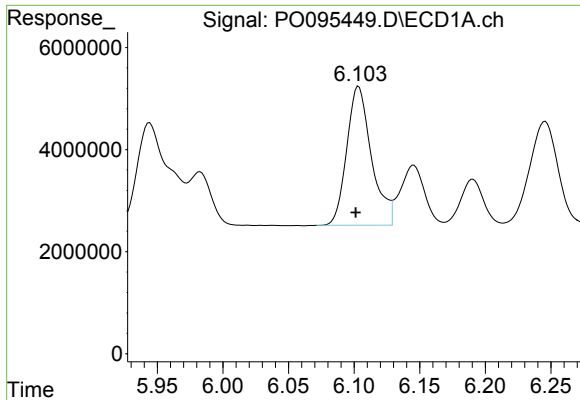
#6 AR-1016-4

R.T.: 5.806 min  
 Delta R.T.: 0.003 min  
 Response: 34982343  
 Conc: 419.89 ng/ml



#6 AR-1016-4

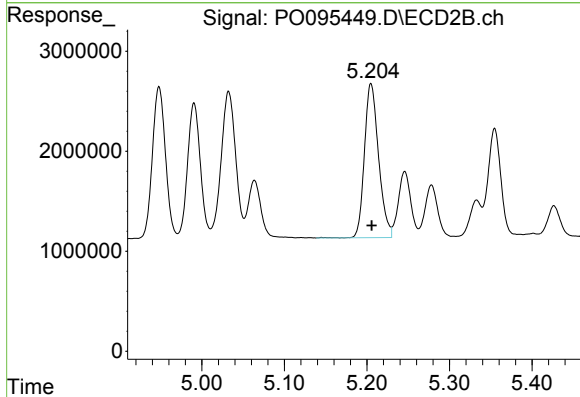
R.T.: 4.991 min  
 Delta R.T.: 0.000 min  
 Response: 14524150  
 Conc: 411.93 ng/ml



#7 AR-1016-5

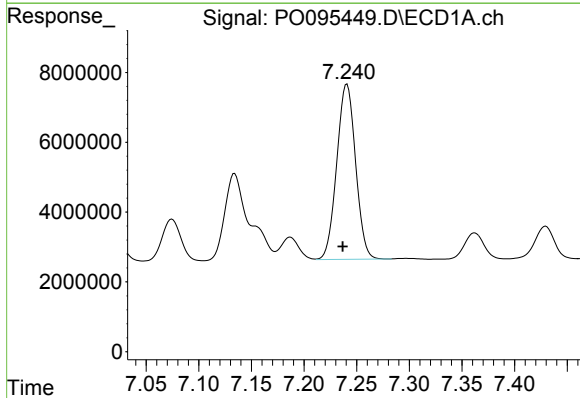
R.T.: 6.103 min  
 Delta R.T.: 0.002 min  
 Response: 35722244  
 Conc: 431.85 ng/ml

Instrument :  
 ECD\_O  
 ClientSampleId :  
 PB153170BS



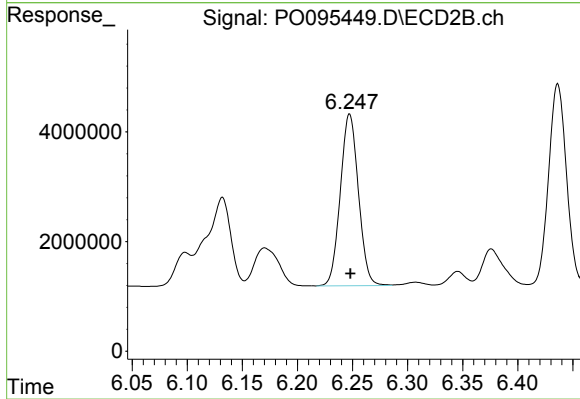
#7 AR-1016-5

R.T.: 5.205 min  
 Delta R.T.: -0.001 min  
 Response: 18289352  
 Conc: 411.10 ng/ml



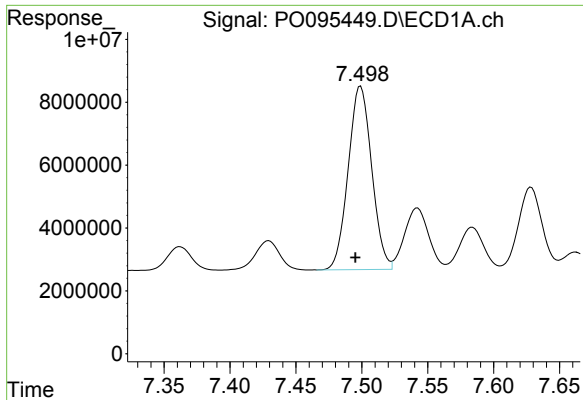
#31 AR-1260-1

R.T.: 7.241 min  
 Delta R.T.: 0.004 min  
 Response: 62622628  
 Conc: 422.34 ng/ml



#31 AR-1260-1

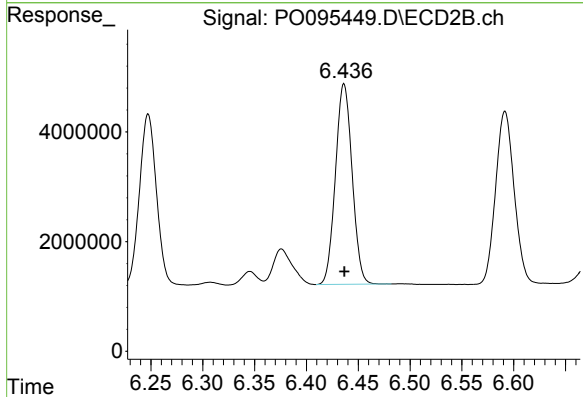
R.T.: 6.247 min  
 Delta R.T.: 0.000 min  
 Response: 35813596  
 Conc: 419.81 ng/ml



#32 AR-1260-2

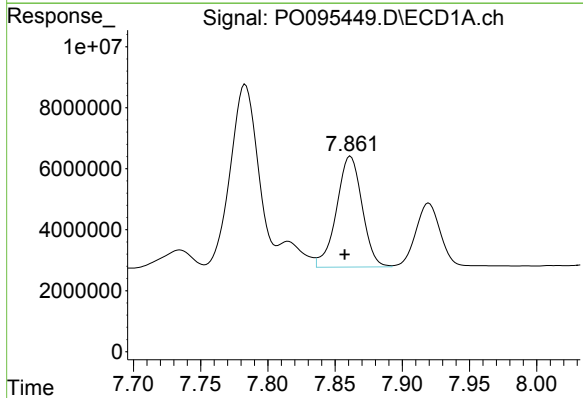
R.T.: 7.499 min  
 Delta R.T.: 0.004 min  
 Response: 72488587  
 Conc: 412.97 ng/ml

Instrument :  
 ECD\_O  
 ClientSampleId :  
 PB153170BS



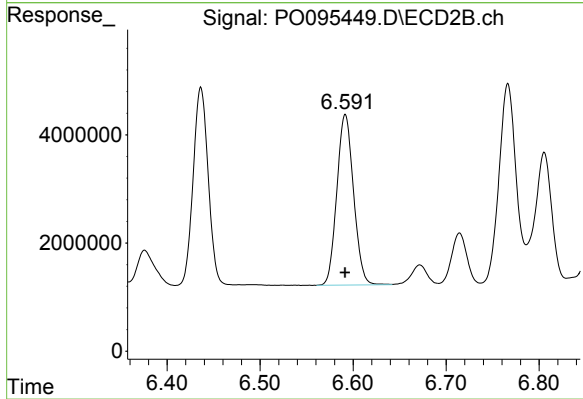
#32 AR-1260-2

R.T.: 6.436 min  
 Delta R.T.: 0.000 min  
 Response: 40987833  
 Conc: 401.13 ng/ml



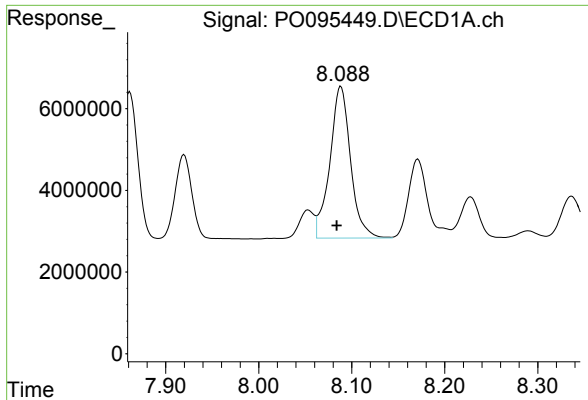
#33 AR-1260-3

R.T.: 7.861 min  
 Delta R.T.: 0.004 min  
 Response: 48019901  
 Conc: 427.77 ng/ml



#33 AR-1260-3

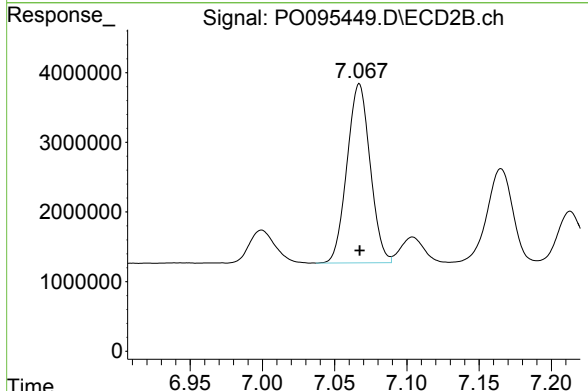
R.T.: 6.592 min  
 Delta R.T.: 0.000 min  
 Response: 39350025  
 Conc: 420.27 ng/ml



#34 AR-1260-4

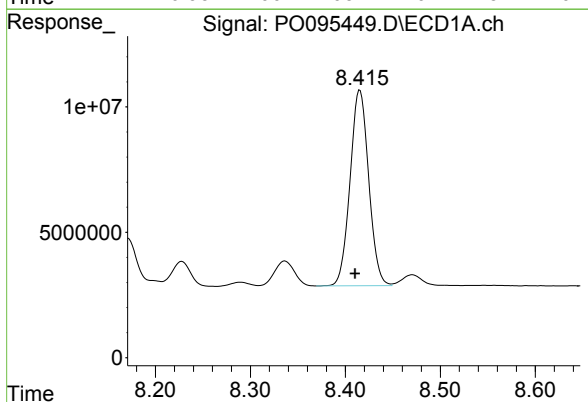
R.T.: 8.088 min  
 Delta R.T.: 0.004 min  
 Response: 57615814  
 Conc: 422.85 ng/ml

Instrument :  
 ECD\_O  
 ClientSampleId :  
 PB153170BS



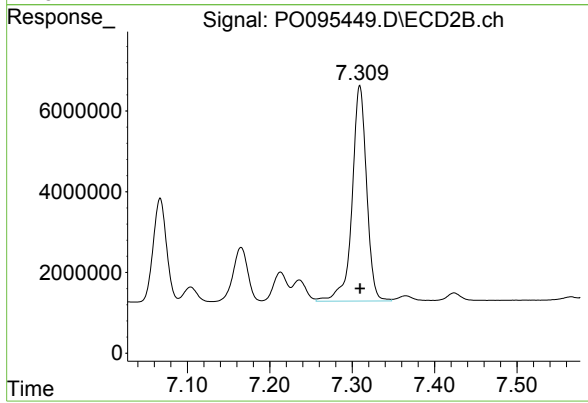
#34 AR-1260-4

R.T.: 7.067 min  
 Delta R.T.: 0.000 min  
 Response: 28668305  
 Conc: 421.46 ng/ml



#35 AR-1260-5

R.T.: 8.415 min  
 Delta R.T.: 0.005 min  
 Response: 106290643  
 Conc: 417.54 ng/ml



#35 AR-1260-5

R.T.: 7.309 min  
 Delta R.T.: 0.000 min  
 Response: 65338531  
 Conc: 414.32 ng/ml