

Data Path : Z:\pestpcbsrv\HPCHEM1\ECD_0\Data\P0060523\
 Data File : P0095463.D
 Signal(s) : Signal #1: ECD1A.ch Signal #2: ECD2B.ch
 Acq On : 05 Jun 2023 14:35
 Operator : YP/AJ
 Sample : AR1248CCC500
 Misc :
 ALS Vial : 5 Sample Multiplier: 1

Instrument :
 ECD_0
 ClientSampleId :
 AR1248CCC500

Integration File signal 1: autoint1.e
 Integration File signal 2: autoint2.e
 Quant Time: Jun 05 21:21:30 2023
 Quant Method : Z:\pestpcbsrv\HPCHEM1\ECD_0\methods\P0060123.M
 Quant Title : GC EXTRACTABLES
 QLast Update : Fri Jun 02 06:53:15 2023
 Response via : Initial Calibration
 Integrator: ChemStation

Volume Inj. : 2 µl
 Signal #1 Phase : ZB-MR1 Signal #2 Phase: ZB-MR2
 Signal #1 Info : 30Mx0.32mmx 0.50µ Signal #2 Info : 30M x 0.32mm x 0.25µm

Compound	RT#1	RT#2	Resp#1	Resp#2	ng/ml	ng/ml

System Monitoring Compounds						
1) SA Tetrachlo...	4.441	3.657	173.4E6	78252102	47.046	49.890
2) SA Decachlor...	10.289	8.716	128.2E6	64303988	47.367	49.706
Target Compounds						
21) L5 AR-1248-1	5.622	4.751	34202956	15996081	461.617	454.471
22) L5 AR-1248-2	5.899	4.991	48562658	21959724	453.946	439.788
23) L5 AR-1248-3	6.106	5.033	51695820	24027667	451.294	458.757
24) L5 AR-1248-4	6.512	5.205	55610986	28952092	448.314	474.664
25) L5 AR-1248-5	6.551	5.601	53865412	27830126	442.034	467.638

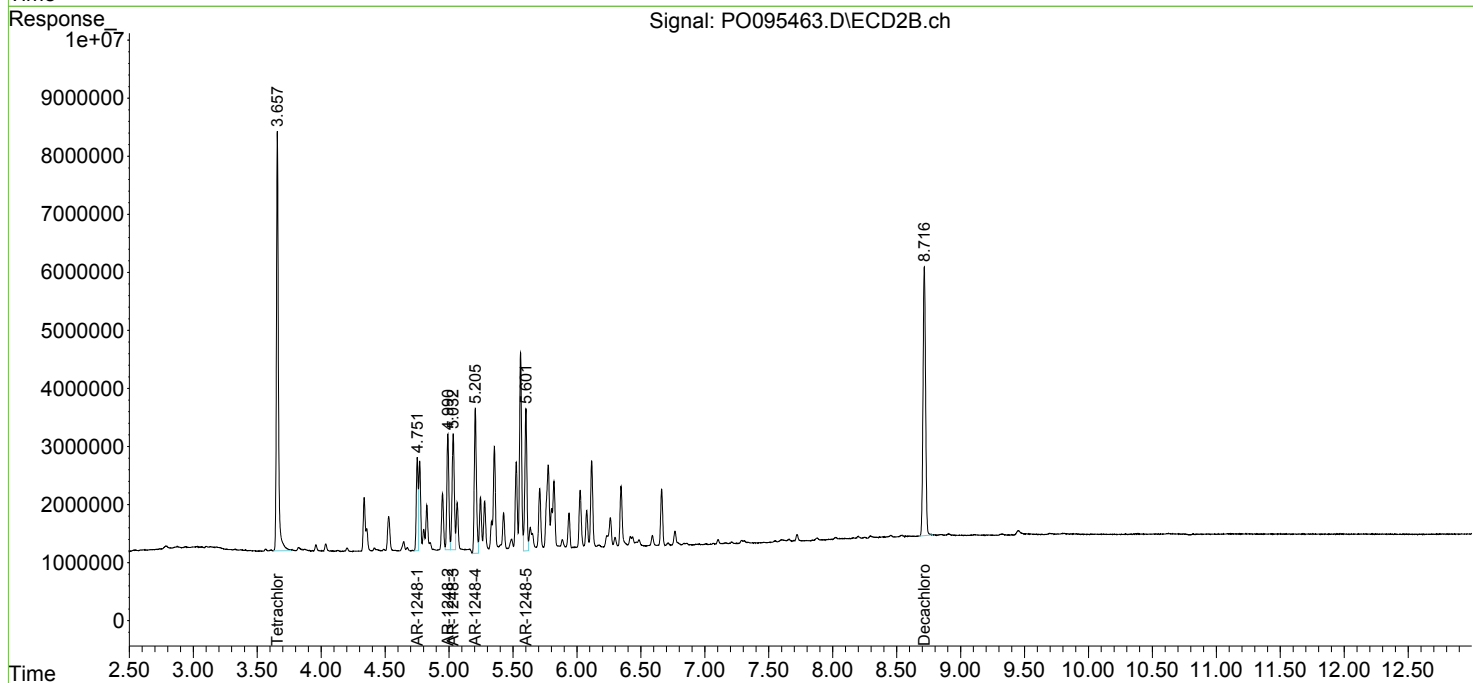
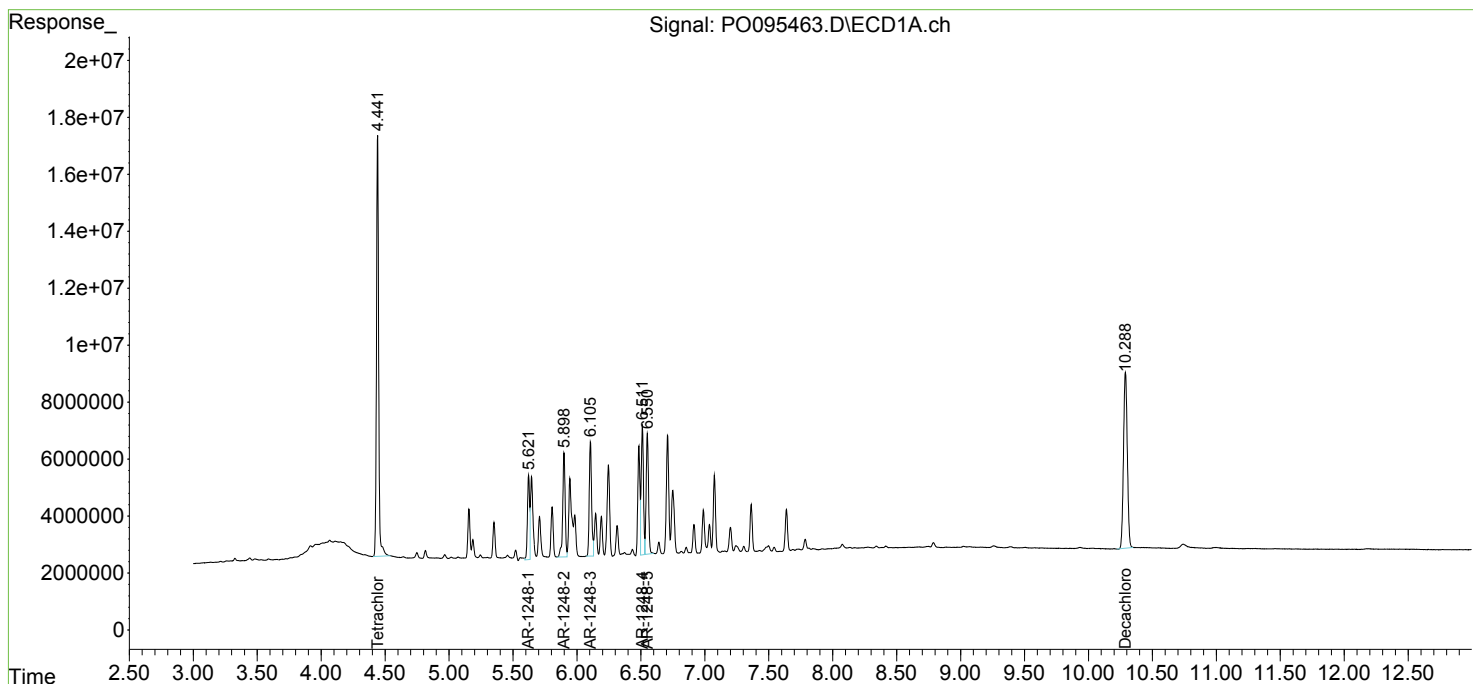
(f)=RT Delta > 1/2 Window (#)=Amounts differ by > 25% (m)=manual int.

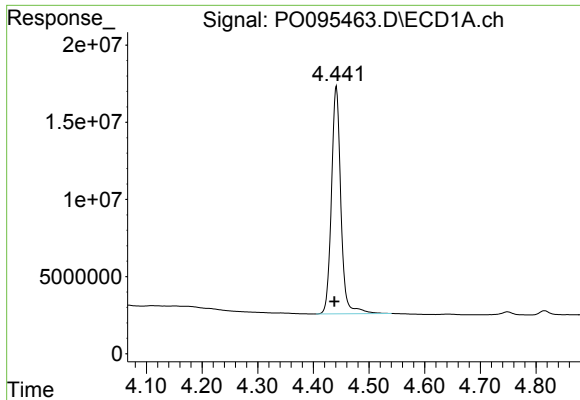
Data Path : Z:\pestpcbsrv\HPCHEM1\ECD_O\Data\P0060523\
 Data File : P0095463.D
 Signal(s) : Signal #1: ECD1A.ch Signal #2: ECD2B.ch
 Acq On : 05 Jun 2023 14:35
 Operator : YP/AJ
 Sample : AR1248CCC500
 Misc :
 ALS Vial : 5 Sample Multiplier: 1

Instrument :
 ECD_O
 ClientSampleId :
 AR1248CCC500

Integration File signal 1: autoint1.e
 Integration File signal 2: autoint2.e
 Quant Time: Jun 05 21:21:30 2023
 Quant Method : Z:\pestpcbsrv\HPCHEM1\ECD_O\methods\P0060123.M
 Quant Title : GC EXTRACTABLES
 QLast Update : Fri Jun 02 06:53:15 2023
 Response via : Initial Calibration
 Integrator: ChemStation

Volume Inj. : 2 µl
 Signal #1 Phase : ZB-MR1 Signal #2 Phase: ZB-MR2
 Signal #1 Info : 30Mx0.32mmx 0.50µ Signal #2 Info : 30M x 0.32mm x 0.25µm

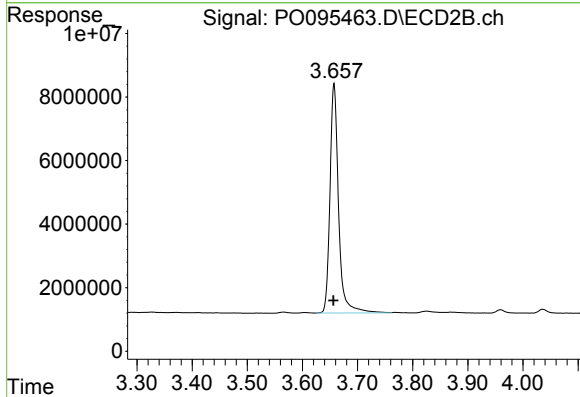




#1 Tetrachloro-m-xylene

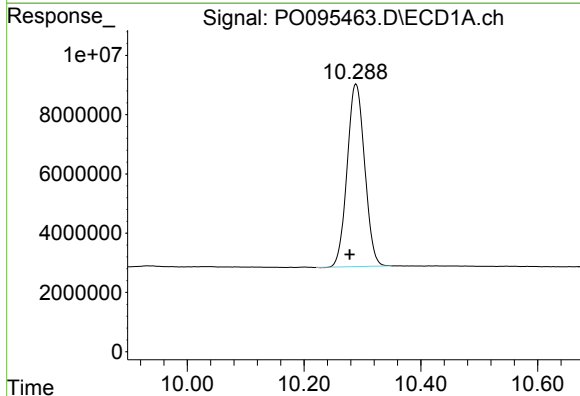
R.T.: 4.441 min
 Delta R.T.: 0.003 min
 Response: 173391913
 Conc: 47.05 ng/ml

Instrument :
 ECD_O
 ClientSampleId :
 AR1248CCC500



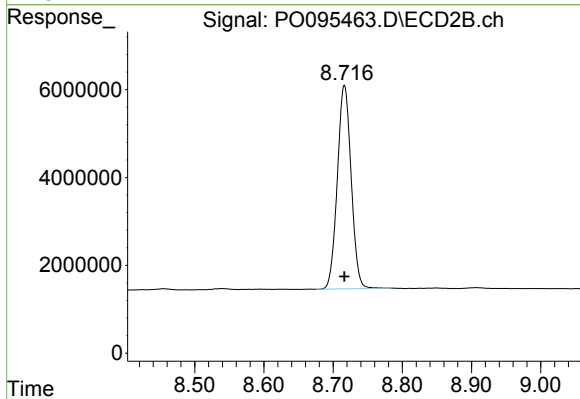
#1 Tetrachloro-m-xylene

R.T.: 3.657 min
 Delta R.T.: 0.000 min
 Response: 78252102
 Conc: 49.89 ng/ml



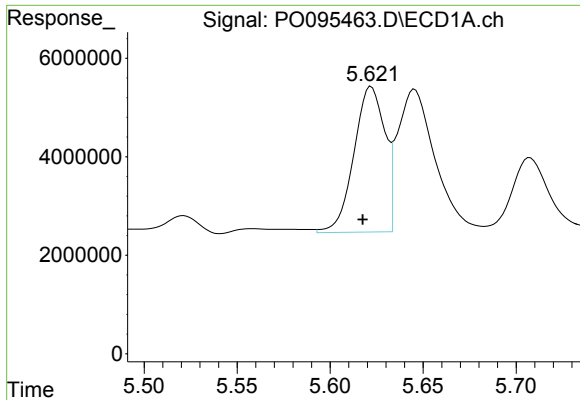
#2 Decachlorobiphenyl

R.T.: 10.289 min
 Delta R.T.: 0.010 min
 Response: 128197846
 Conc: 47.37 ng/ml



#2 Decachlorobiphenyl

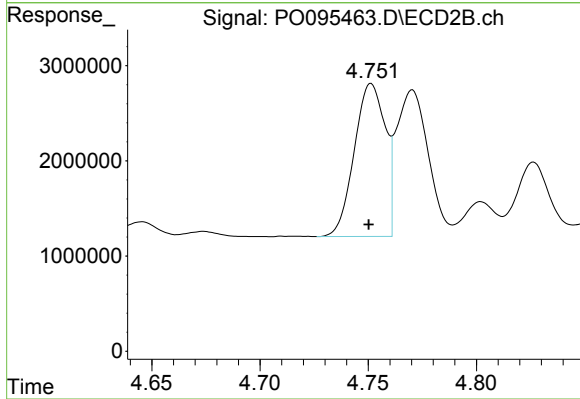
R.T.: 8.716 min
 Delta R.T.: 0.000 min
 Response: 64303988
 Conc: 49.71 ng/ml



#21 AR-1248-1

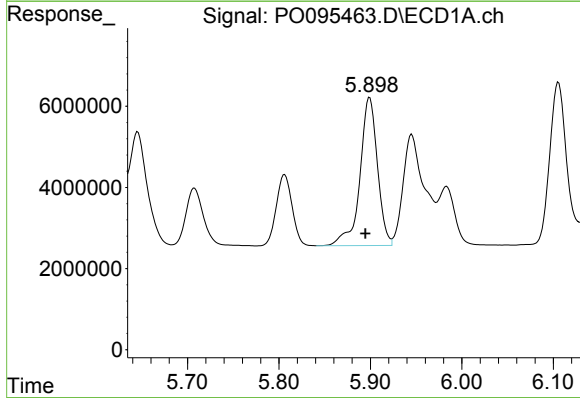
R.T.: 5.622 min
 Delta R.T.: 0.005 min
 Response: 34202956
 Conc: 461.62 ng/ml

Instrument :
 ECD_O
 ClientSampleId :
 AR1248CCC500



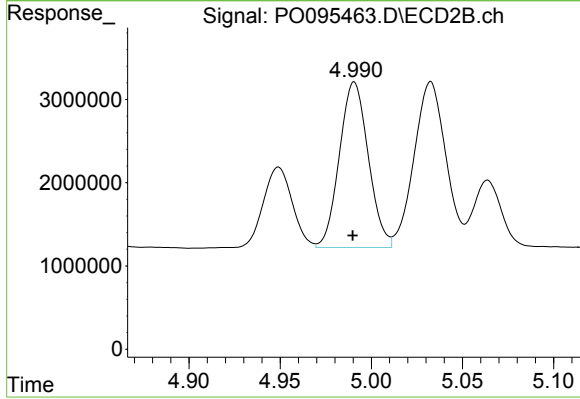
#21 AR-1248-1

R.T.: 4.751 min
 Delta R.T.: 0.001 min
 Response: 15996081
 Conc: 454.47 ng/ml



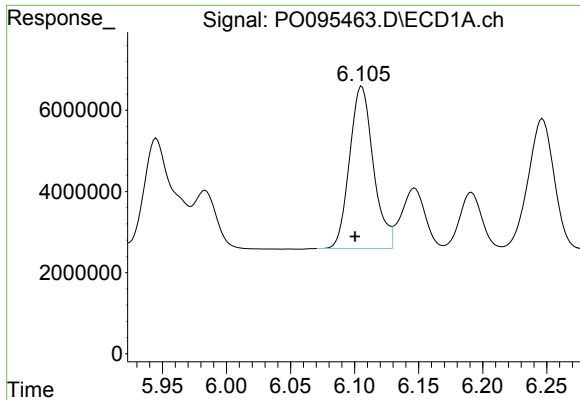
#22 AR-1248-2

R.T.: 5.899 min
 Delta R.T.: 0.005 min
 Response: 48562658
 Conc: 453.95 ng/ml



#22 AR-1248-2

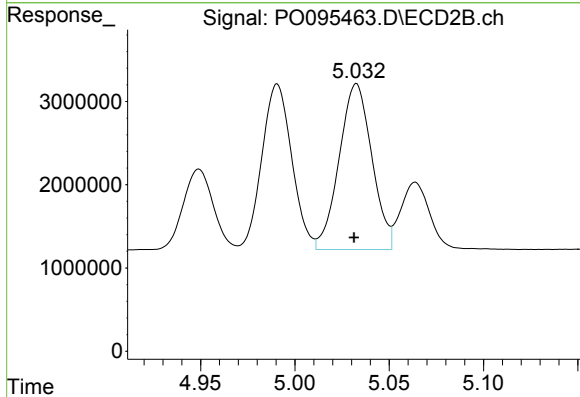
R.T.: 4.991 min
 Delta R.T.: 0.000 min
 Response: 21959724
 Conc: 439.79 ng/ml



#23 AR-1248-3

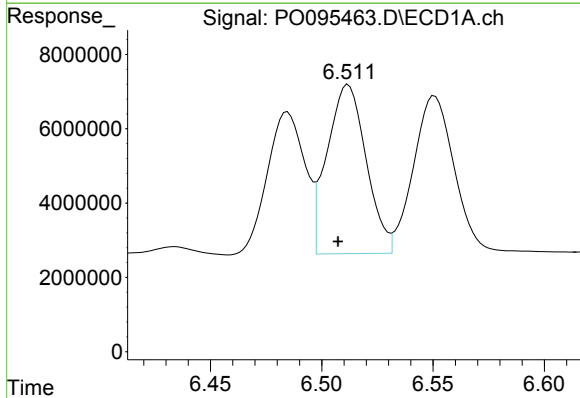
R.T.: 6.106 min
 Delta R.T.: 0.005 min
 Response: 51695820
 Conc: 451.29 ng/ml

Instrument :
 ECD_O
 ClientSampleId :
 AR1248CCC500



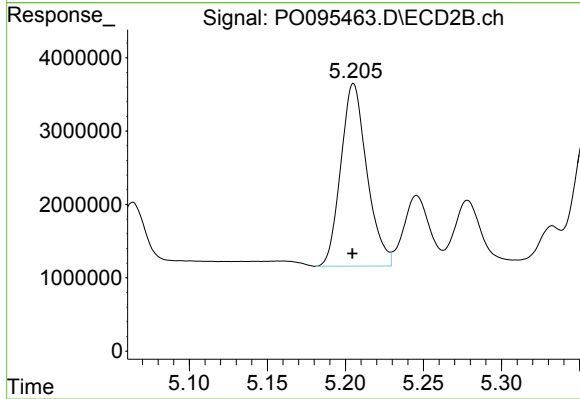
#23 AR-1248-3

R.T.: 5.033 min
 Delta R.T.: 0.001 min
 Response: 24027667
 Conc: 458.76 ng/ml



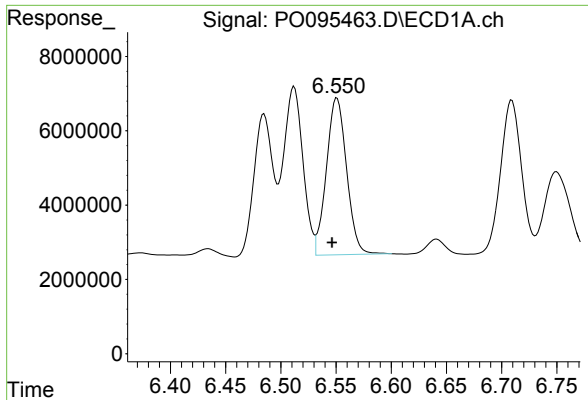
#24 AR-1248-4

R.T.: 6.512 min
 Delta R.T.: 0.005 min
 Response: 55610986
 Conc: 448.31 ng/ml



#24 AR-1248-4

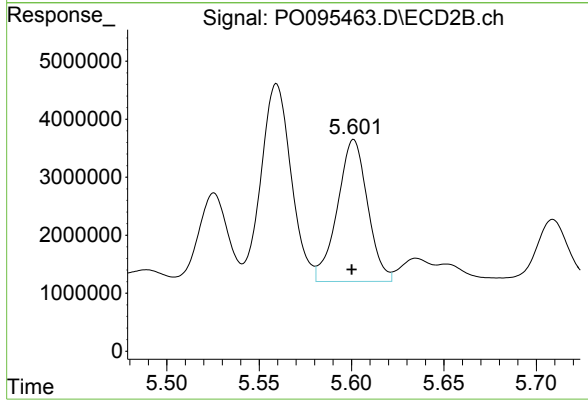
R.T.: 5.205 min
 Delta R.T.: 0.000 min
 Response: 28952092
 Conc: 474.66 ng/ml



#25 AR-1248-5

R.T.: 6.551 min
Delta R.T.: 0.004 min
Response: 53865412
Conc: 442.03 ng/ml

Instrument :
ECD_O
ClientSampleId :
AR1248CCC500



#25 AR-1248-5

R.T.: 5.601 min
Delta R.T.: 0.001 min
Response: 27830126
Conc: 467.64 ng/ml