

Data Path : Z:\pestpcbsrv\HPCHEM1\ECD_0\Data\P0060523\
 Data File : P0095481.D
 Signal(s) : Signal #1: ECD1A.ch Signal #2: ECD2B.ch
 Acq On : 05 Jun 2023 20:08
 Operator : YP/AJ
 Sample : 03018-03
 Misc :
 ALS Vial : 30 Sample Multiplier: 1

Instrument :
 ECD_0
ClientSampleId :
 362

Manual Integrations
APPROVED
 Reviewed By :Yogesh Patel 06/06/2023
 Supervised By :Ankita Jodhani 06/06/2023

Integration File signal 1: autoint1.e
 Integration File signal 2: autoint2.e
 Quant Time: Jun 05 21:30:08 2023
 Quant Method : Z:\pestpcbsrv\HPCHEM1\ECD_0\methods\P0060123.M
 Quant Title : GC EXTRACTABLES
 QLast Update : Fri Jun 02 06:53:15 2023
 Response via : Initial Calibration
 Integrator: ChemStation

Volume Inj. : 2 µl
 Signal #1 Phase : ZB-MR2 Signal #2 Phase: ZB-MR2
 Signal #1 Info : 30Mx0.32mmx 0.50µ Signal #2 Info : 30M x 0.32mm x 0.25µm

Compound	RT#1	RT#2	Resp#1	Resp#2	ng/ml	ng/ml

System Monitoring Compounds						
1) SA Tetrachlo...	4.438	3.655	87522470	39025571	23.747	24.881
2) SA Decachlor...	10.286	8.712	62528104	31871283	23.103	24.636
Target Compounds						
26) L6 AR-1254-1	6.482	5.557	6165365	4651581	48.344	52.856m
27) L6 AR-1254-2	6.705	5.706	9288779	3141429	48.956	39.409m
28) L6 AR-1254-3	7.073	6.112	10148457	5148184	53.491	42.120m
29) L6 AR-1254-4	7.360	6.342	5248641	2926245	37.072	38.774m
30) L6 AR-1254-5	7.784	6.763	11000174	13981527	69.393	124.963 #
31) L7 AR-1260-1	7.238	6.244	8059753	6854184	54.357	80.344 #
32) L7 AR-1260-2	7.496	6.433	10829152	6452720	61.694	63.150
33) L7 AR-1260-3	7.859	6.589	6193760	4738919	55.175	50.613
34) L7 AR-1260-4	8.085	7.063	8726544	3710801	64.045	54.553
35) L7 AR-1260-5	8.414	7.306	12034312	8848377	47.274	56.109

(f)=RT Delta > 1/2 Window (#)=Amounts differ by > 25% (m)=manual int.

Data Path : Z:\pestpcbsrv\HPCHEM1\ECD_O\Data\P0060523\
 Data File : P0095481.D
 Signal(s) : Signal #1: ECD1A.ch Signal #2: ECD2B.ch
 Acq On : 05 Jun 2023 20:08
 Operator : YP/AJ
 Sample : 03018-03
 Misc :
 ALS Vial : 30 Sample Multiplier: 1

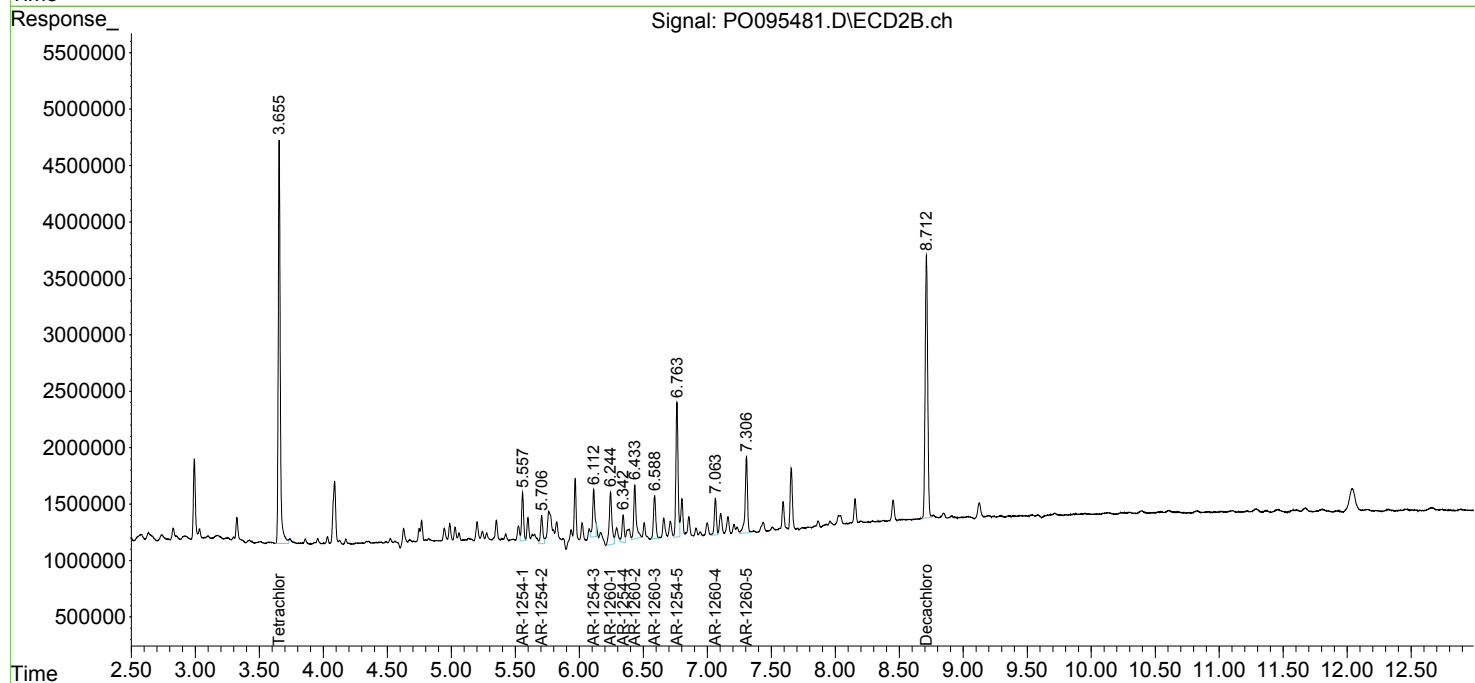
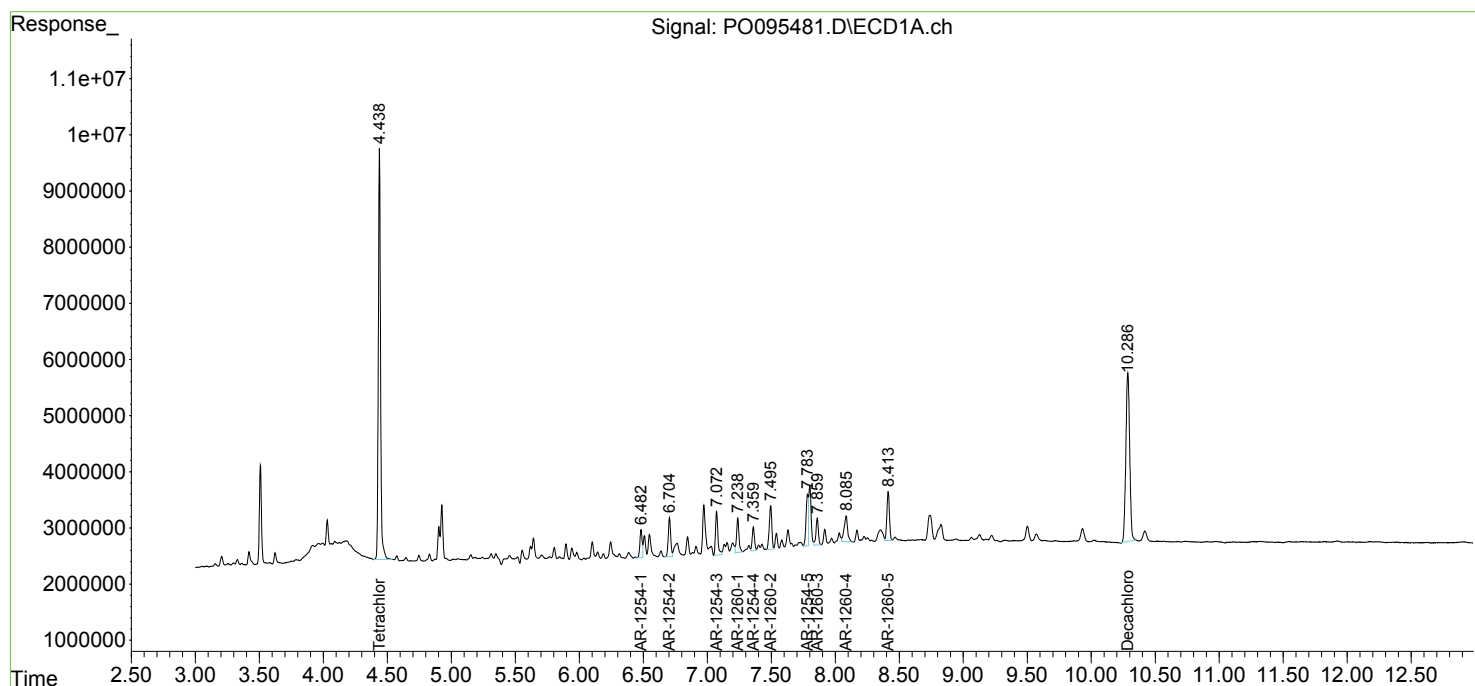
Instrument :
 ECD_O
 ClientSampleId :
 362

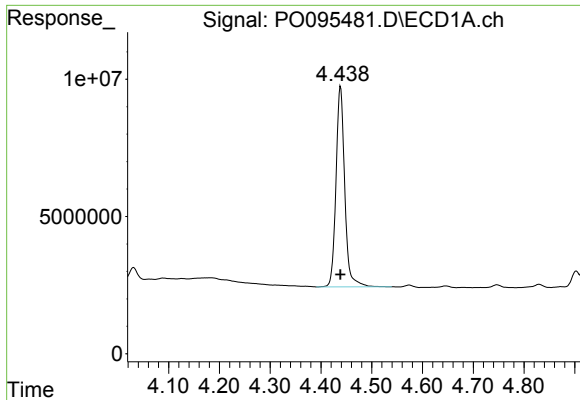
Manual Integrations
 APPROVED

Reviewed By :Yogesh Patel 06/06/2023
 Supervised By :Ankita Jodhani 06/06/2023

Integration File signal 1: autoint1.e
 Integration File signal 2: autoint2.e
 Quant Time: Jun 05 21:30:08 2023
 Quant Method : Z:\pestpcbsrv\HPCHEM1\ECD_O\methods\P0060123.M
 Quant Title : GC EXTRACTABLES
 QLast Update : Fri Jun 02 06:53:15 2023
 Response via : Initial Calibration
 Integrator: ChemStation

Volume Inj. : 2 µl
 Signal #1 Phase : ZB-MR1 Signal #2 Phase: ZB-MR2
 Signal #1 Info : 30Mx0.32mmx 0.50µ Signal #2 Info : 30M x 0.32mm x 0.25µm





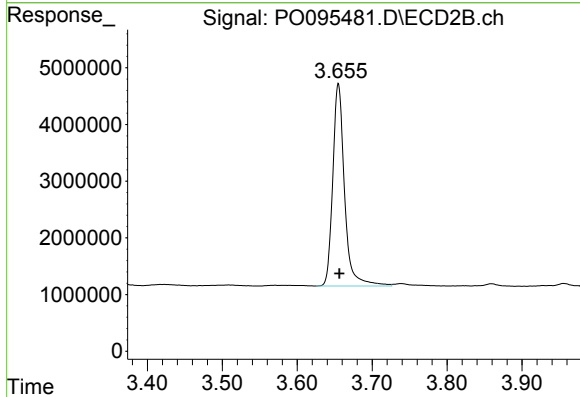
#1 Tetrachloro-m-xylene

R.T.: 4.438 min
 Delta R.T.: 0.000 min
 Response: 87522470
 Conc: 23.75 ng/ml

Instrument :
 ECD_O
 ClientSampleId :
 362

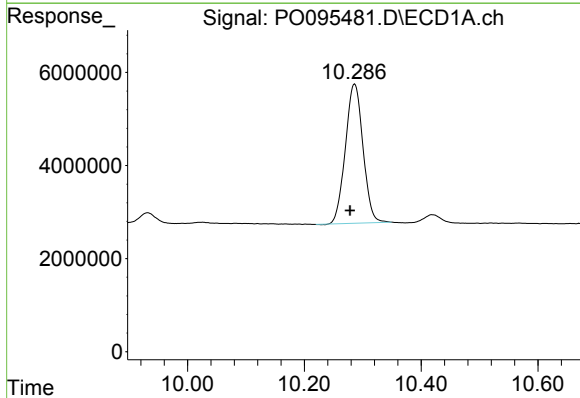
Manual Integrations
 APPROVED

Reviewed By :Yogesh Patel 06/06/2023
 Supervised By :Ankita Jodhani 06/06/2023



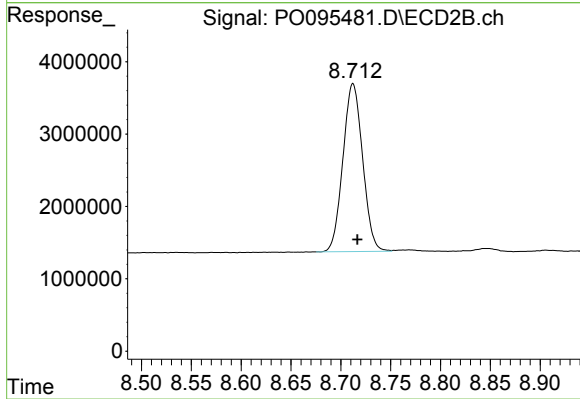
#1 Tetrachloro-m-xylene

R.T.: 3.655 min
 Delta R.T.: -0.002 min
 Response: 39025571
 Conc: 24.88 ng/ml



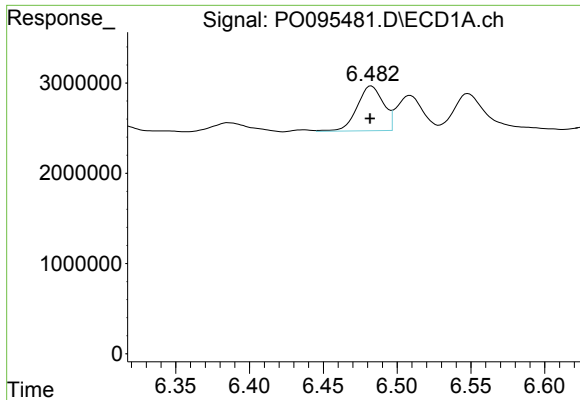
#2 Decachlorobiphenyl

R.T.: 10.286 min
 Delta R.T.: 0.008 min
 Response: 62528104
 Conc: 23.10 ng/ml



#2 Decachlorobiphenyl

R.T.: 8.712 min
 Delta R.T.: -0.004 min
 Response: 31871283
 Conc: 24.64 ng/ml



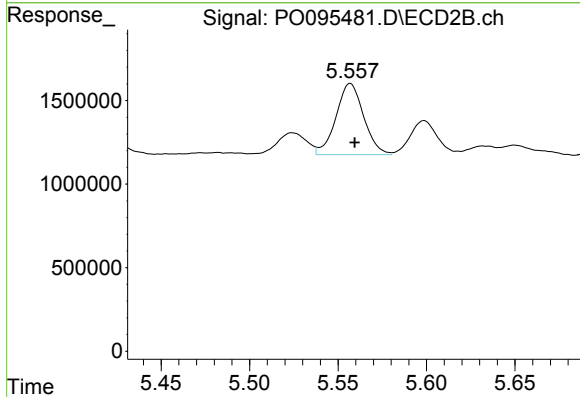
#26 AR-1254-1

R.T.: 6.482 min
 Delta R.T.: 0.000 min
 Response: 6165365
 Conc: 48.34 ng/ml

Instrument :
 ECD_O
 ClientSampleId :
 362

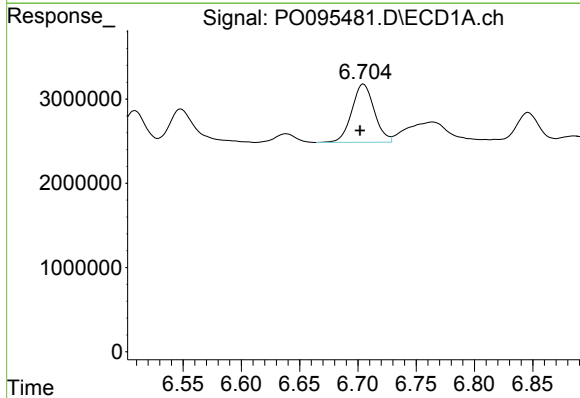
Manual Integrations
 APPROVED

Reviewed By :Yogesh Patel 06/06/2023
 Supervised By :Ankita Jodhani 06/06/2023



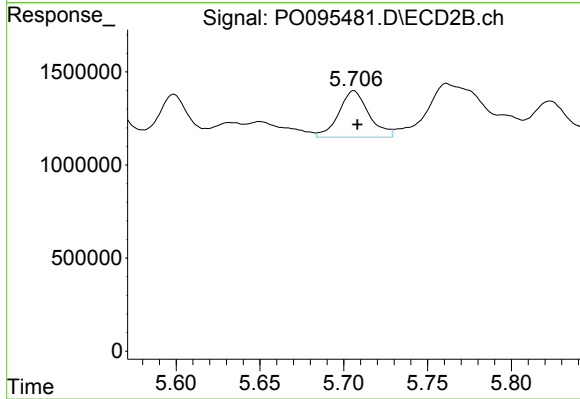
#26 AR-1254-1

R.T.: 5.557 min
 Delta R.T.: -0.003 min
 Response: 4651581
 Conc: 52.86 ng/ml m



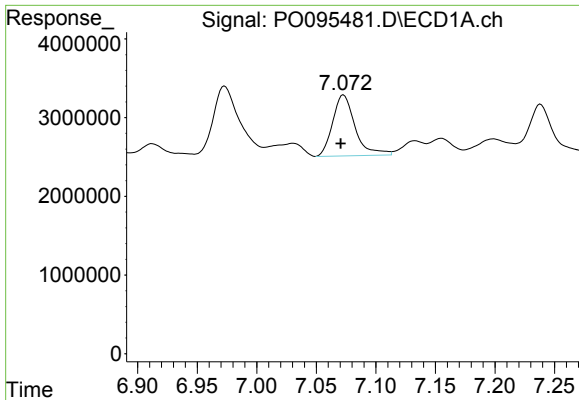
#27 AR-1254-2

R.T.: 6.705 min
 Delta R.T.: 0.003 min
 Response: 9288779
 Conc: 48.96 ng/ml



#27 AR-1254-2

R.T.: 5.706 min
 Delta R.T.: -0.003 min
 Response: 3141429
 Conc: 39.41 ng/ml m



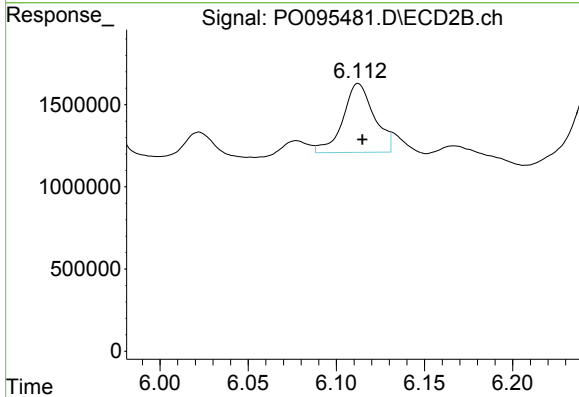
#28 AR-1254-3

R.T.: 7.073 min
 Delta R.T.: 0.002 min
 Response: 10148457
 Conc: 53.49 ng/ml

Instrument :
 ECD_O
 ClientSampleId :
 362

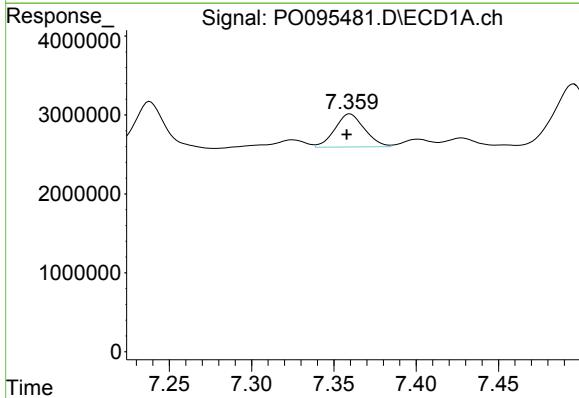
Manual Integrations
 APPROVED

Reviewed By :Yogesh Patel 06/06/2023
 Supervised By :Ankita Jodhani 06/06/2023



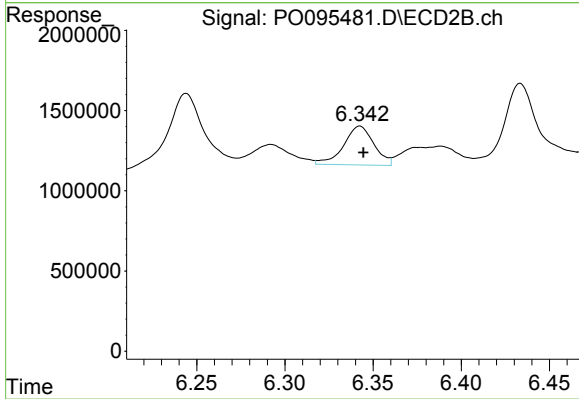
#28 AR-1254-3

R.T.: 6.112 min
 Delta R.T.: -0.003 min
 Response: 5148184
 Conc: 42.12 ng/ml m



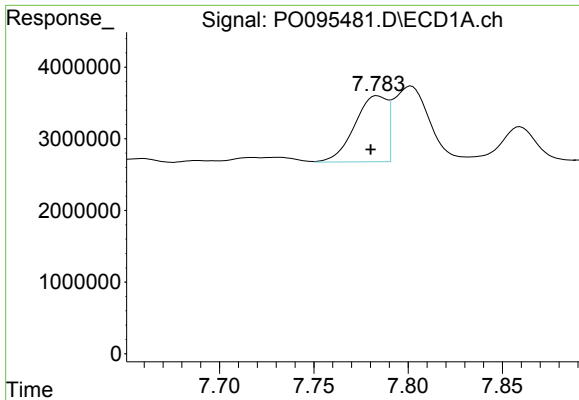
#29 AR-1254-4

R.T.: 7.360 min
 Delta R.T.: 0.002 min
 Response: 5248641
 Conc: 37.07 ng/ml



#29 AR-1254-4

R.T.: 6.342 min
 Delta R.T.: -0.002 min
 Response: 2926245
 Conc: 38.77 ng/ml m



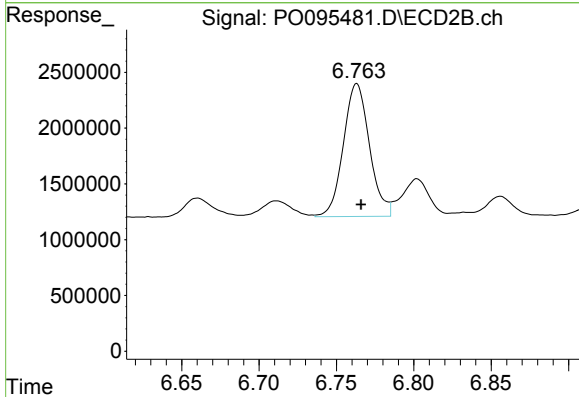
#30 AR-1254-5

R.T.: 7.784 min
 Delta R.T.: 0.003 min
 Response: 11000174
 Conc: 69.39 ng/ml

Instrument :
 ECD_O
 ClientSampleId :
 362

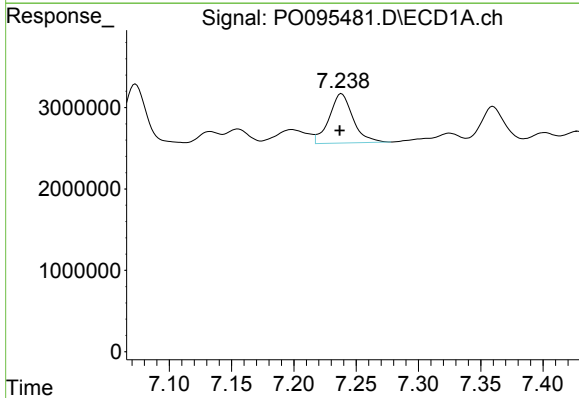
Manual Integrations
 APPROVED

Reviewed By :Yogesh Patel 06/06/2023
 Supervised By :Ankita Jodhani 06/06/2023



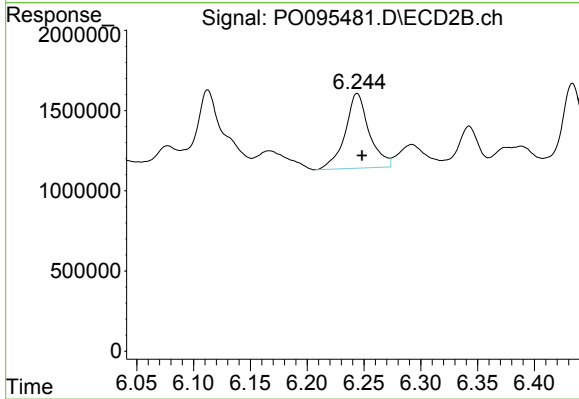
#30 AR-1254-5

R.T.: 6.763 min
 Delta R.T.: -0.003 min
 Response: 13981527
 Conc: 124.96 ng/ml



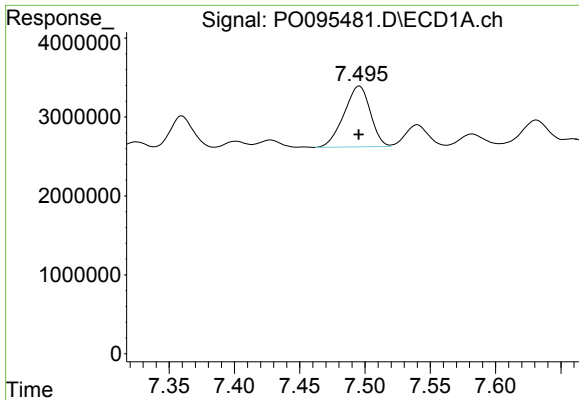
#31 AR-1260-1

R.T.: 7.238 min
 Delta R.T.: 0.002 min
 Response: 8059753
 Conc: 54.36 ng/ml



#31 AR-1260-1

R.T.: 6.244 min
 Delta R.T.: -0.004 min
 Response: 6854184
 Conc: 80.34 ng/ml



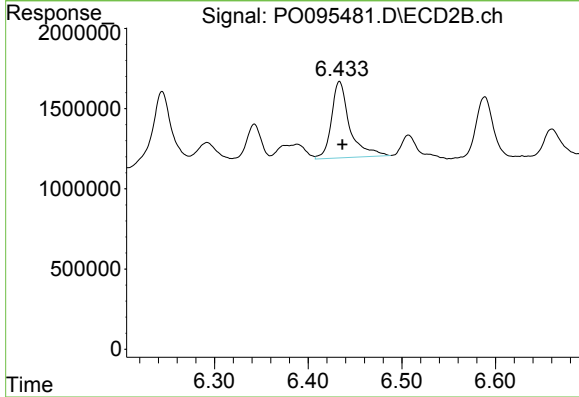
#32 AR-1260-2

R.T.: 7.496 min
 Delta R.T.: 0.000 min
 Response: 10829152
 Conc: 61.69 ng/ml

Instrument :
 ECD_O
 ClientSampleId :
 362

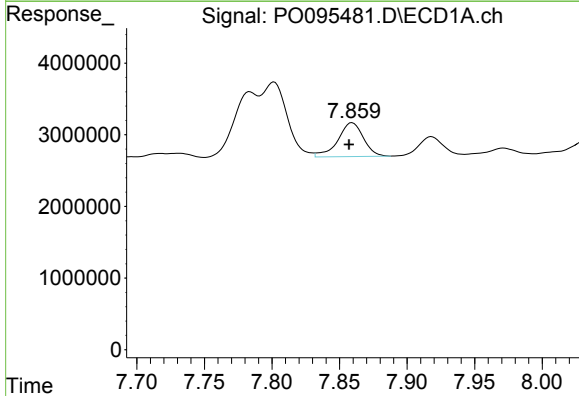
Manual Integrations
 APPROVED

Reviewed By :Yogesh Patel 06/06/2023
 Supervised By :Ankita Jodhani 06/06/2023



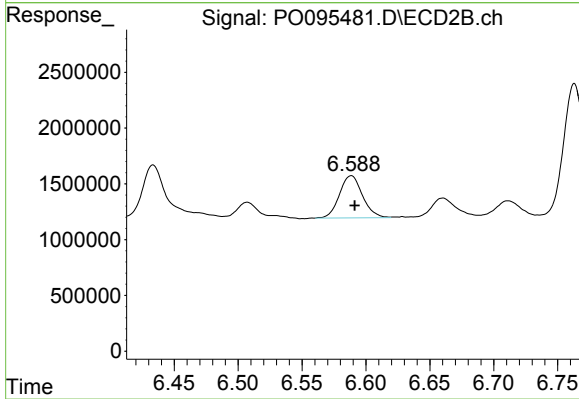
#32 AR-1260-2

R.T.: 6.433 min
 Delta R.T.: -0.003 min
 Response: 6452720
 Conc: 63.15 ng/ml



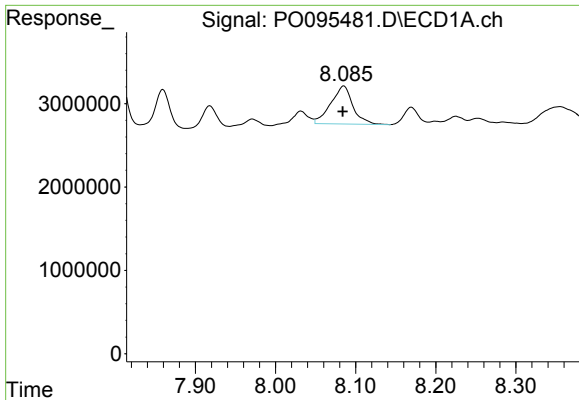
#33 AR-1260-3

R.T.: 7.859 min
 Delta R.T.: 0.002 min
 Response: 6193760
 Conc: 55.17 ng/ml



#33 AR-1260-3

R.T.: 6.589 min
 Delta R.T.: -0.003 min
 Response: 4738919
 Conc: 50.61 ng/ml



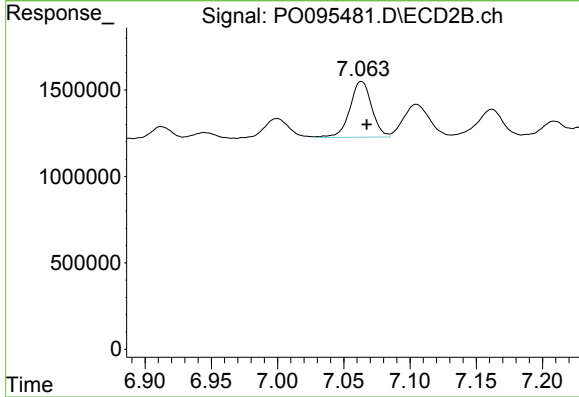
#34 AR-1260-4

R.T.: 8.085 min
 Delta R.T.: 0.001 min
 Response: 8726544
 Conc: 64.04 ng/ml

Instrument :
 ECD_O
 ClientSampleId :
 362

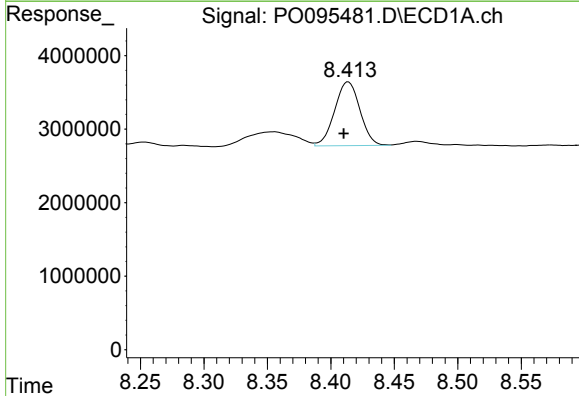
Manual Integrations
 APPROVED

Reviewed By :Yogesh Patel 06/06/2023
 Supervised By :Ankita Jodhani 06/06/2023



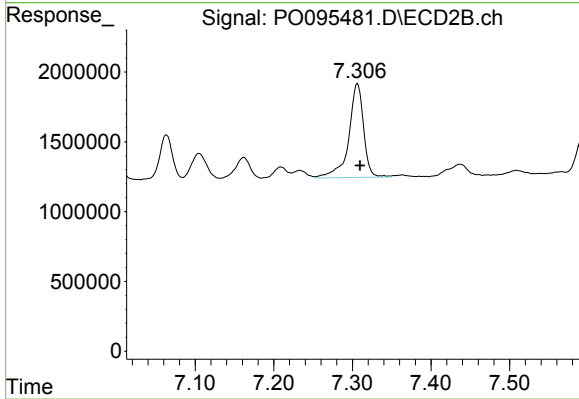
#34 AR-1260-4

R.T.: 7.063 min
 Delta R.T.: -0.004 min
 Response: 3710801
 Conc: 54.55 ng/ml



#35 AR-1260-5

R.T.: 8.414 min
 Delta R.T.: 0.004 min
 Response: 12034312
 Conc: 47.27 ng/ml



#35 AR-1260-5

R.T.: 7.306 min
 Delta R.T.: -0.003 min
 Response: 8848377
 Conc: 56.11 ng/ml