

Data Path : Z:\pestpcbsrv\HPCHEM1\ECD\_0\Data\P0060523\  
 Data File : P0095484.D  
 Signal(s) : Signal #1: ECD1A.ch Signal #2: ECD2B.ch  
 Acq On : 05 Jun 2023 20:59  
 Operator : YP/AJ  
 Sample : 03018-09  
 Misc :  
 ALS Vial : 33 Sample Multiplier: 1

**Instrument :**  
 ECD\_0  
**ClientSampleId :**  
 72-11991

**Manual Integrations**  
**APPROVED**

Reviewed By :Yogesh Patel 06/06/2023  
 Supervised By :Ankita Jodhani 06/06/2023

Integration File signal 1: autoint1.e  
 Integration File signal 2: autoint2.e  
 Quant Time: Jun 06 05:27:01 2023  
 Quant Method : Z:\pestpcbsrv\HPCHEM1\ECD\_0\methods\P0060123.M  
 Quant Title : GC EXTRACTABLES  
 QLast Update : Fri Jun 02 06:53:15 2023  
 Response via : Initial Calibration  
 Integrator: ChemStation

Volume Inj. : 2 µl  
 Signal #1 Phase : ZB-MR2 Signal #2 Phase: ZB-MR2  
 Signal #1 Info : 30Mx0.32mmx 0.50µ Signal #2 Info : 30M x 0.32mm x 0.25µm

Compound	RT#1	RT#2	Resp#1	Resp#2	ng/ml	ng/ml
-----						
System Monitoring Compounds						
1) SA Tetrachlo...	4.438	3.654	72791679	32198207	19.751	20.528
2) SA Decachlor...	10.285	8.713	40968774	21619088	15.137	16.711
Target Compounds						
26) L6 AR-1254-1	6.483	5.557	3875488	2484799	30.389	28.235m
27) L6 AR-1254-2	6.705	5.705	6160382	2091223	32.468	26.234m
28) L6 AR-1254-3	7.072	6.112	8624412	3725266	45.458	30.478m#
29) L6 AR-1254-4	7.361	6.342	4658908	1849469	32.907	24.506m#
30) L6 AR-1254-5	7.782	6.764	8689017	4926538	54.813	44.032
31) L7 AR-1260-1	7.238	6.243	4462565	3273699	30.097	38.374m#
32) L7 AR-1260-2	7.495	6.433	7334286	2582449	41.784	25.273m#
33) L7 AR-1260-3	7.860	6.588	3685801	2422761	32.833	25.876
34) L7 AR-1260-4	8.085	7.063	4733063	1993867	34.736	29.312
35) L7 AR-1260-5	8.413	7.305	7126340	5803117	27.994	36.798 #

(f)=RT Delta > 1/2 Window (#)=Amounts differ by > 25% (m)=manual int.

Data Path : Z:\pestpcbsrv\HPCHEM1\ECD\_O\Data\P0060523\  
 Data File : P0095484.D  
 Signal(s) : Signal #1: ECD1A.ch Signal #2: ECD2B.ch  
 Acq On : 05 Jun 2023 20:59  
 Operator : YP/AJ  
 Sample : 03018-09  
 Misc :  
 ALS Vial : 33 Sample Multiplier: 1

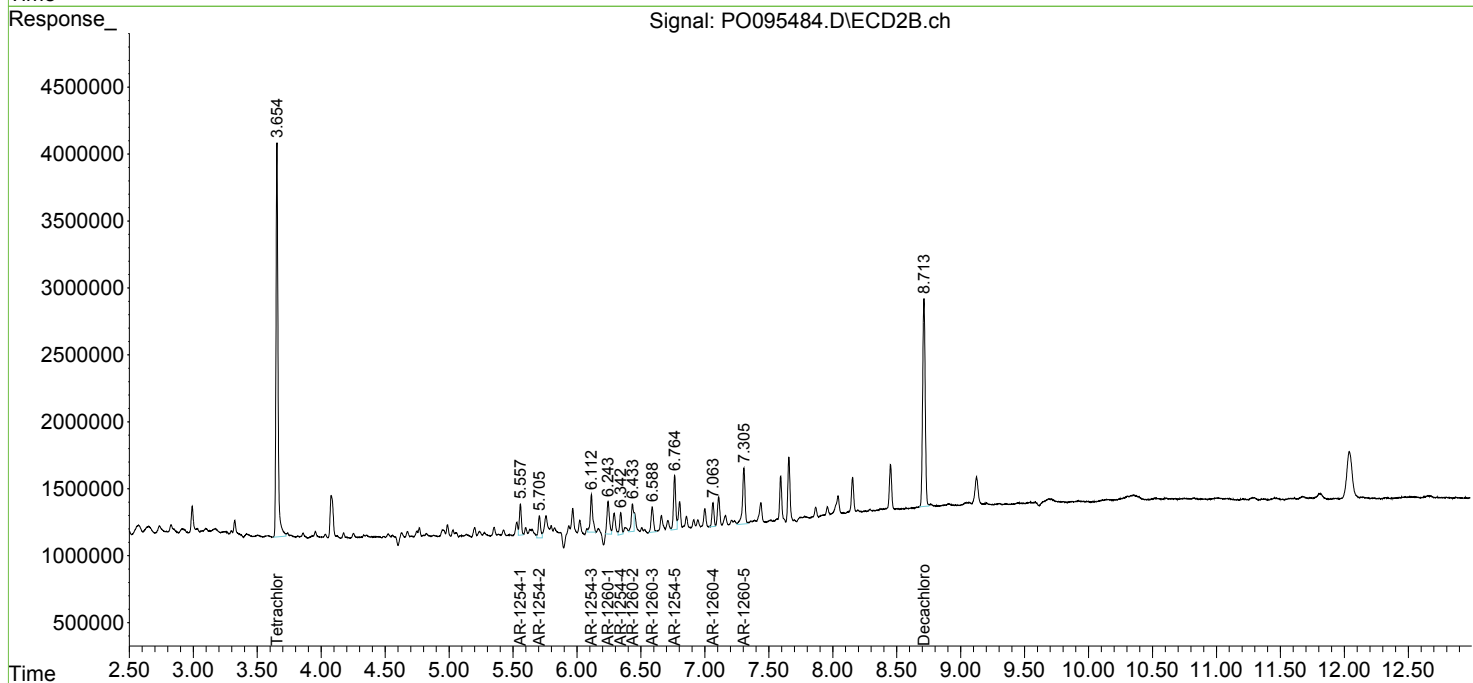
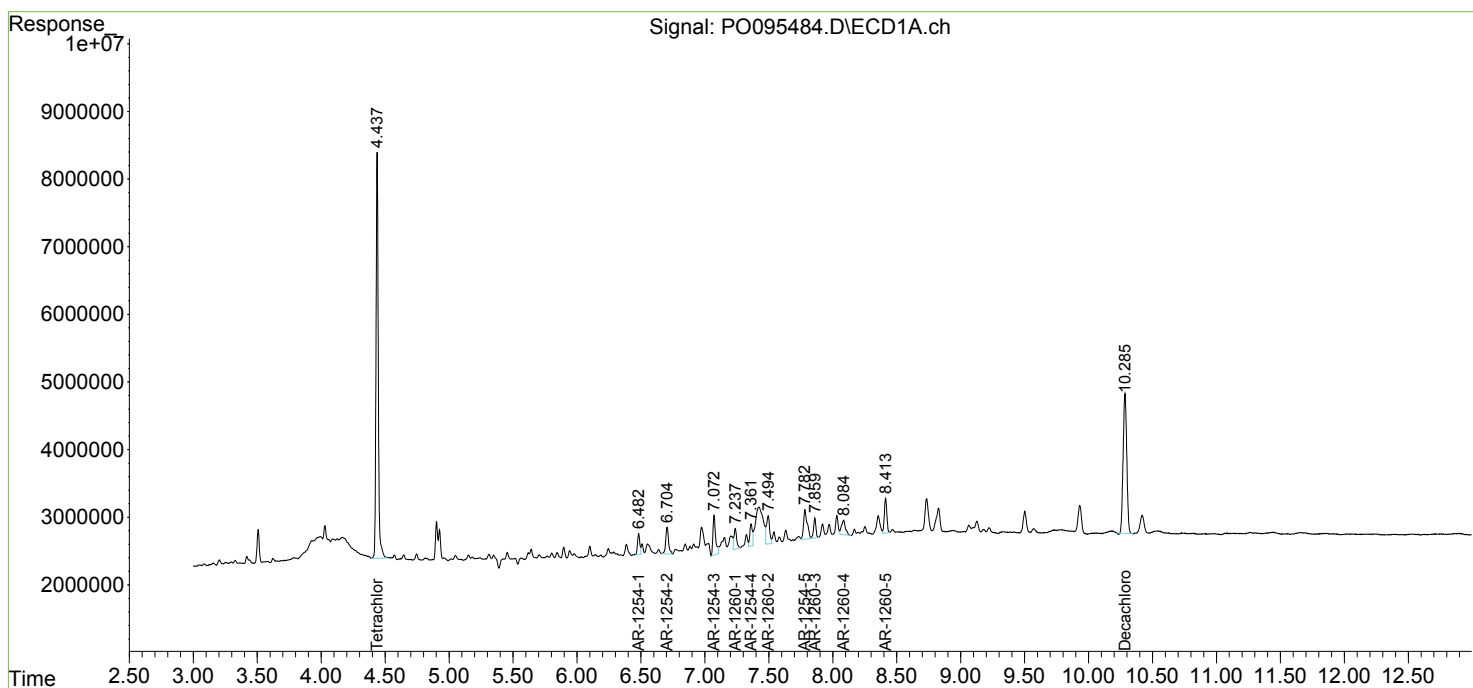
**Instrument :**  
 ECD\_O  
**ClientSampleId :**  
 72-11991

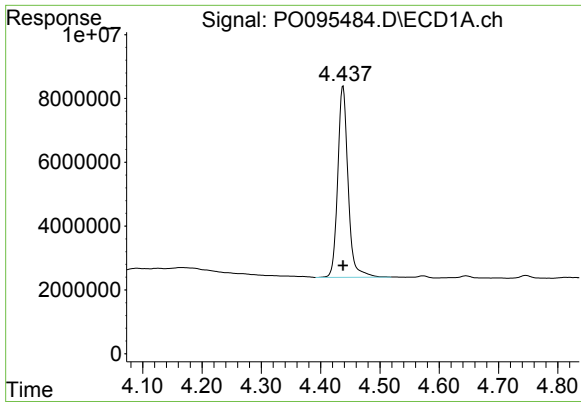
**Manual Integrations**  
**APPROVED**

Reviewed By :Yogesh Patel 06/06/2023  
 Supervised By :Ankita Jodhani 06/06/2023

Integration File signal 1: autoint1.e  
 Integration File signal 2: autoint2.e  
 Quant Time: Jun 06 05:27:01 2023  
 Quant Method : Z:\pestpcbsrv\HPCHEM1\ECD\_O\methods\P0060123.M  
 Quant Title : GC EXTRACTABLES  
 QLast Update : Fri Jun 02 06:53:15 2023  
 Response via : Initial Calibration  
 Integrator: ChemStation

Volume Inj. : 2 µl  
 Signal #1 Phase : ZB-MR1 Signal #2 Phase: ZB-MR2  
 Signal #1 Info : 30Mx0.32mmx 0.50µ Signal #2 Info : 30M x 0.32mm x 0.25µm



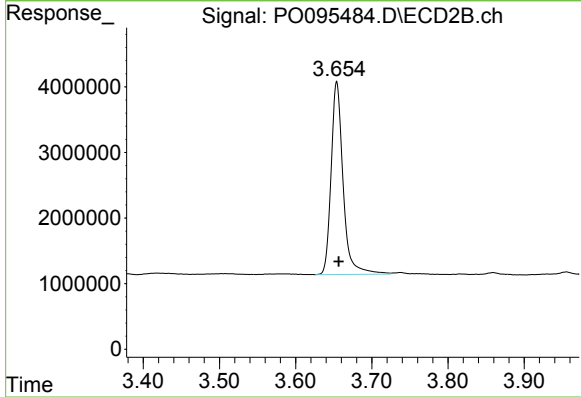


#1 Tetrachloro-m-xylene  
 R.T.: 4.438 min  
 Delta R.T.: 0.000 min  
 Response: 72791679  
 Conc: 19.75 ng/ml

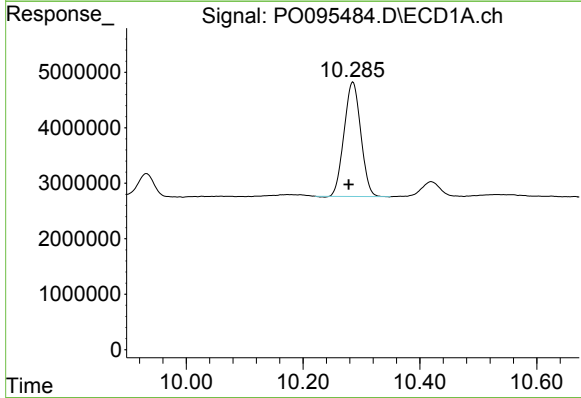
Instrument :  
 ECD\_O  
 ClientSampleId :  
 72-11991

Manual Integrations  
 APPROVED

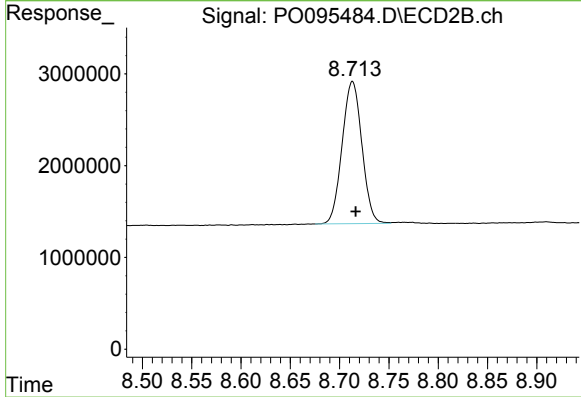
Reviewed By :Yogesh Patel 06/06/2023  
 Supervised By :Ankita Jodhani 06/06/2023



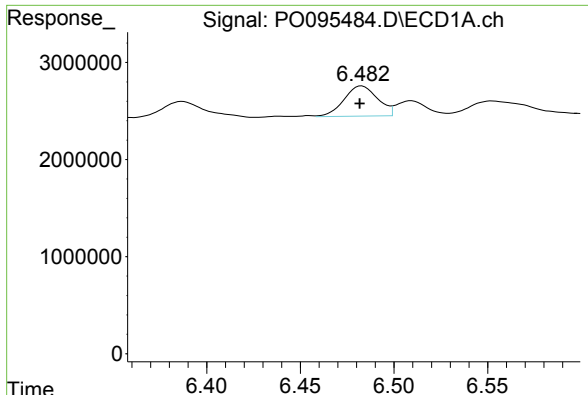
#1 Tetrachloro-m-xylene  
 R.T.: 3.654 min  
 Delta R.T.: -0.002 min  
 Response: 32198207  
 Conc: 20.53 ng/ml



#2 Decachlorobiphenyl  
 R.T.: 10.285 min  
 Delta R.T.: 0.007 min  
 Response: 40968774  
 Conc: 15.14 ng/ml



#2 Decachlorobiphenyl  
 R.T.: 8.713 min  
 Delta R.T.: -0.003 min  
 Response: 21619088  
 Conc: 16.71 ng/ml



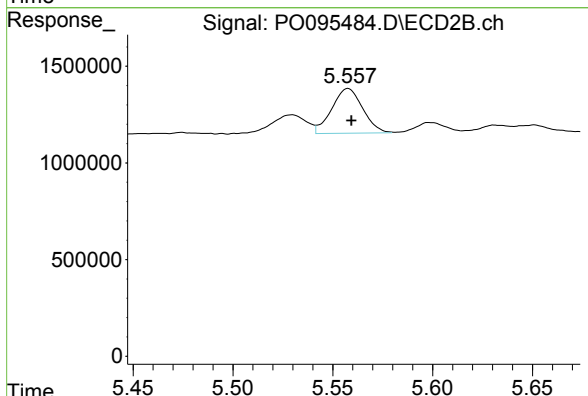
#26 AR-1254-1

R.T.: 6.483 min  
 Delta R.T.: 0.000 min  
 Response: 3875488  
 Conc: 30.39 ng/ml

Instrument :  
 ECD\_O  
 ClientSampleId :  
 72-11991

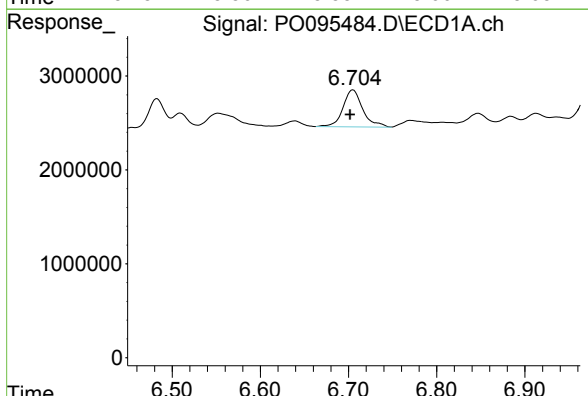
Manual Integrations  
 APPROVED

Reviewed By :Yogesh Patel 06/06/2023  
 Supervised By :Ankita Jodhani 06/06/2023



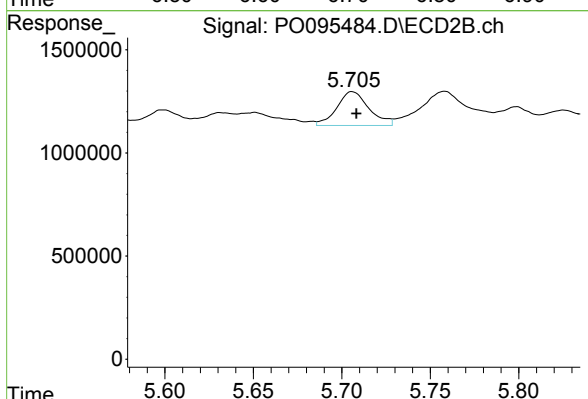
#26 AR-1254-1

R.T.: 5.557 min  
 Delta R.T.: -0.002 min  
 Response: 2484799  
 Conc: 28.23 ng/ml m



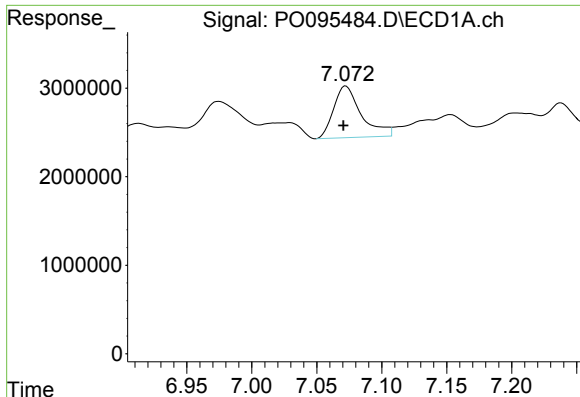
#27 AR-1254-2

R.T.: 6.705 min  
 Delta R.T.: 0.003 min  
 Response: 6160382  
 Conc: 32.47 ng/ml



#27 AR-1254-2

R.T.: 5.705 min  
 Delta R.T.: -0.003 min  
 Response: 2091223  
 Conc: 26.23 ng/ml m



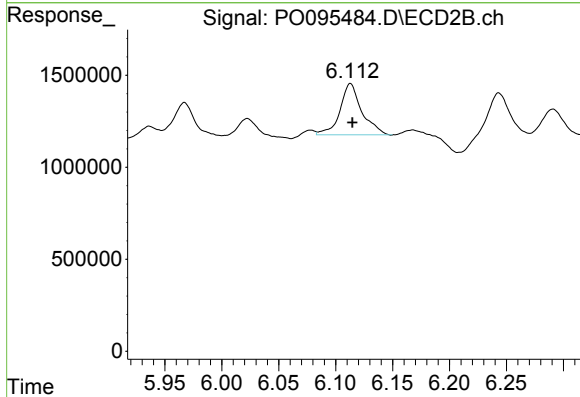
#28 AR-1254-3

R.T.: 7.072 min  
 Delta R.T.: 0.002 min  
 Response: 8624412  
 Conc: 45.46 ng/ml

Instrument :  
 ECD\_O  
 ClientSampleId :  
 72-11991

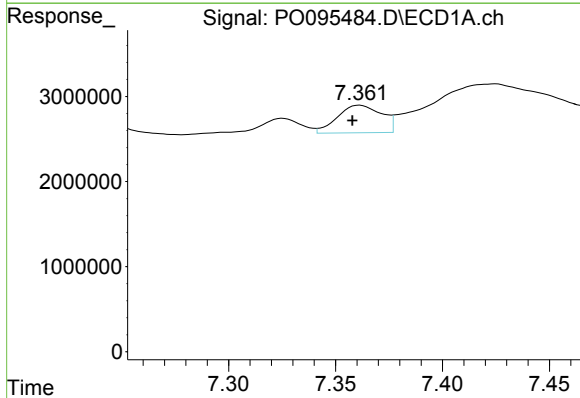
Manual Integrations  
 APPROVED

Reviewed By :Yogesh Patel 06/06/2023  
 Supervised By :Ankita Jodhani 06/06/2023



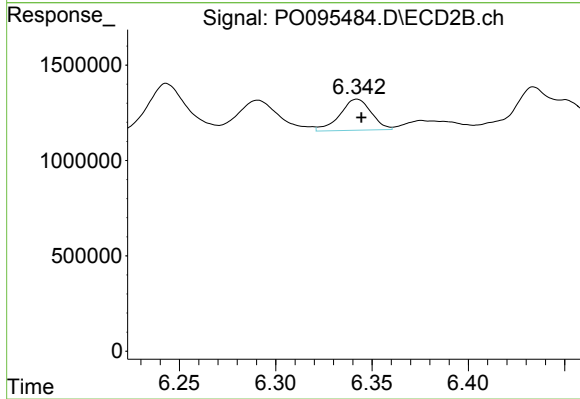
#28 AR-1254-3

R.T.: 6.112 min  
 Delta R.T.: -0.002 min  
 Response: 3725266  
 Conc: 30.48 ng/ml m



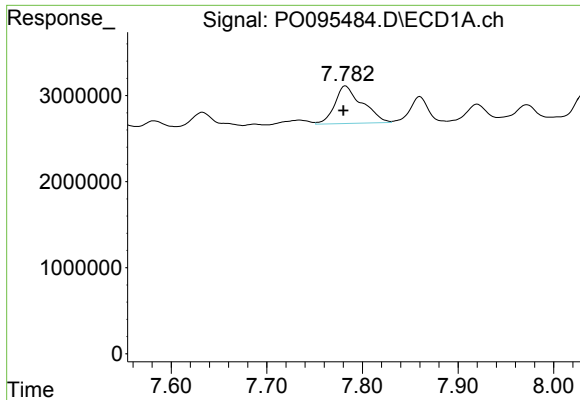
#29 AR-1254-4

R.T.: 7.361 min  
 Delta R.T.: 0.003 min  
 Response: 4658908  
 Conc: 32.91 ng/ml



#29 AR-1254-4

R.T.: 6.342 min  
 Delta R.T.: -0.003 min  
 Response: 1849469  
 Conc: 24.51 ng/ml m



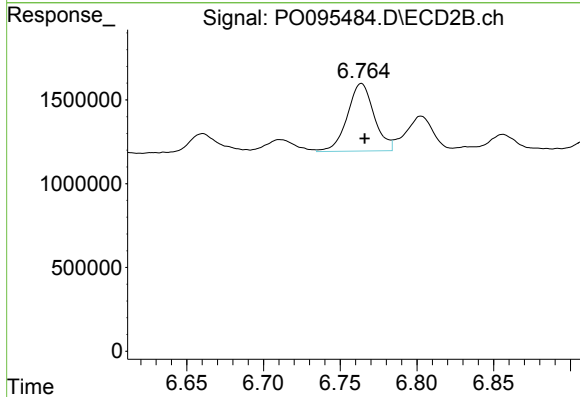
#30 AR-1254-5

R.T.: 7.782 min  
 Delta R.T.: 0.002 min  
 Response: 8689017  
 Conc: 54.81 ng/ml

Instrument :  
 ECD\_O  
 ClientSampleId :  
 72-11991

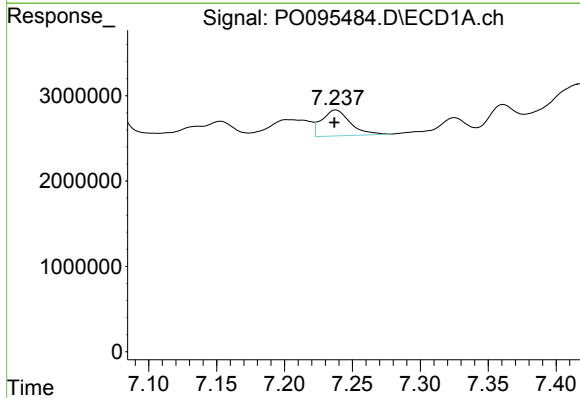
Manual Integrations  
 APPROVED

Reviewed By :Yogesh Patel 06/06/2023  
 Supervised By :Ankita Jodhani 06/06/2023



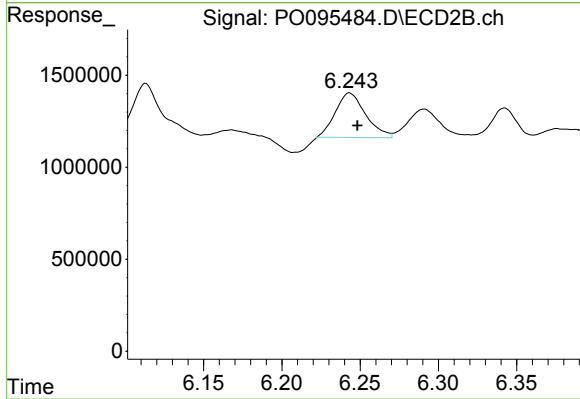
#30 AR-1254-5

R.T.: 6.764 min  
 Delta R.T.: -0.002 min  
 Response: 4926538  
 Conc: 44.03 ng/ml



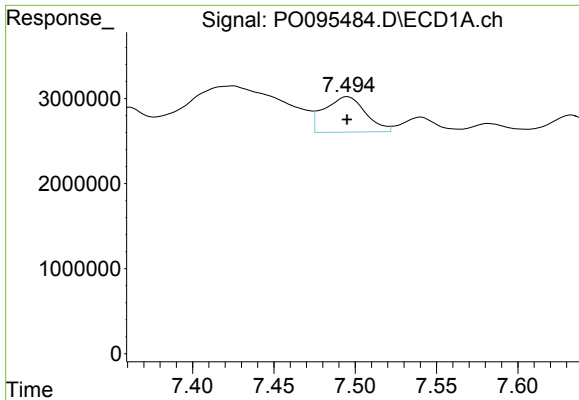
#31 AR-1260-1

R.T.: 7.238 min  
 Delta R.T.: 0.001 min  
 Response: 4462565  
 Conc: 30.10 ng/ml



#31 AR-1260-1

R.T.: 6.243 min  
 Delta R.T.: -0.006 min  
 Response: 3273699  
 Conc: 38.37 ng/ml m



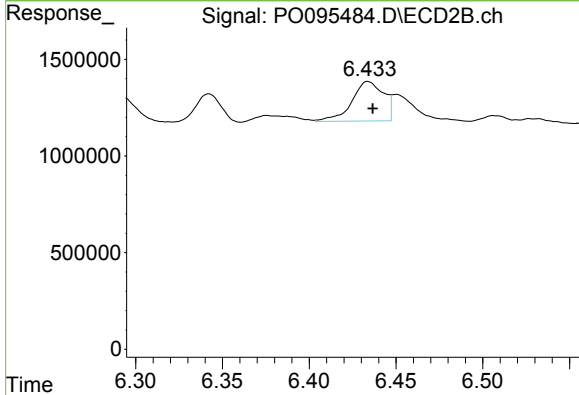
#32 AR-1260-2

R.T.: 7.495 min  
 Delta R.T.: 0.000 min  
 Response: 7334286  
 Conc: 41.78 ng/ml

Instrument :  
 ECD\_O  
 ClientSampleId :  
 72-11991

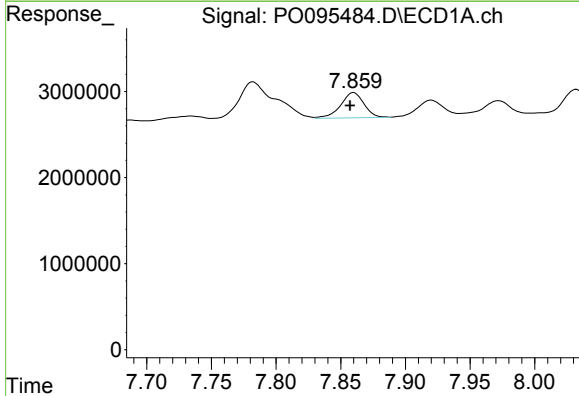
Manual Integrations  
 APPROVED

Reviewed By :Yogesh Patel 06/06/2023  
 Supervised By :Ankita Jodhani 06/06/2023



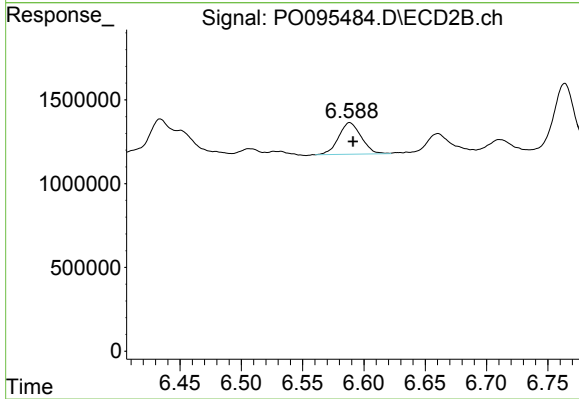
#32 AR-1260-2

R.T.: 6.433 min  
 Delta R.T.: -0.003 min  
 Response: 2582449  
 Conc: 25.27 ng/ml m



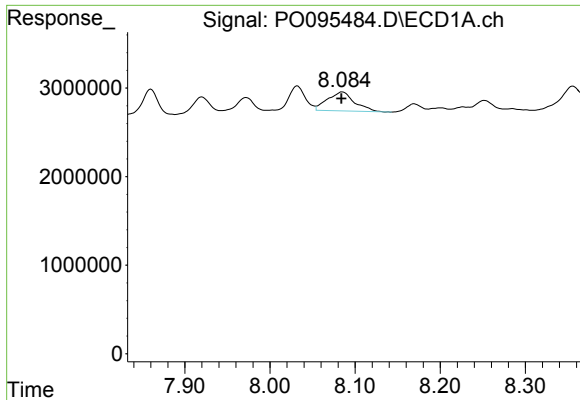
#33 AR-1260-3

R.T.: 7.860 min  
 Delta R.T.: 0.003 min  
 Response: 3685801  
 Conc: 32.83 ng/ml



#33 AR-1260-3

R.T.: 6.588 min  
 Delta R.T.: -0.003 min  
 Response: 2422761  
 Conc: 25.88 ng/ml



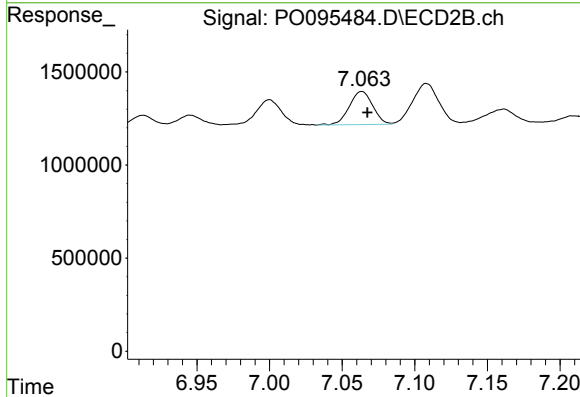
#34 AR-1260-4

R.T.: 8.085 min  
 Delta R.T.: 0.001 min  
 Response: 4733063  
 Conc: 34.74 ng/ml

Instrument :  
 ECD\_O  
 ClientSampleId :  
 72-11991

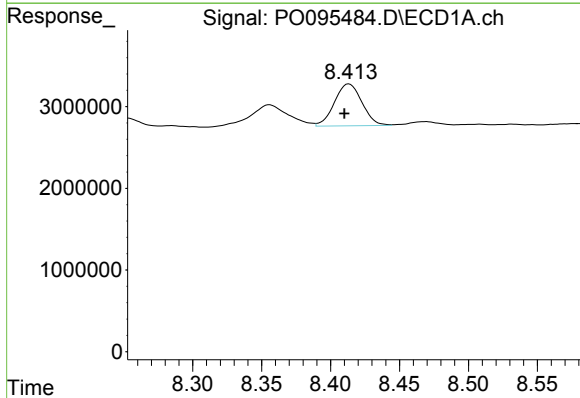
Manual Integrations  
 APPROVED

Reviewed By :Yogesh Patel 06/06/2023  
 Supervised By :Ankita Jodhani 06/06/2023



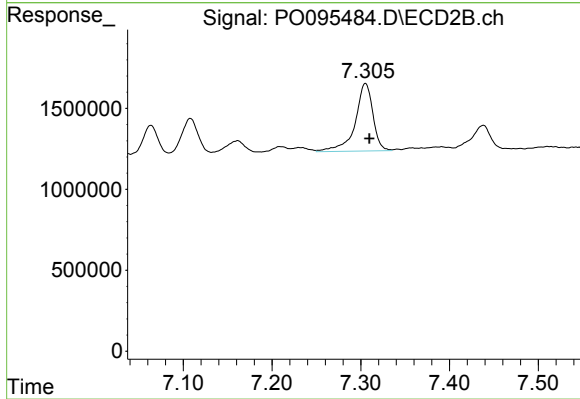
#34 AR-1260-4

R.T.: 7.063 min  
 Delta R.T.: -0.004 min  
 Response: 1993867  
 Conc: 29.31 ng/ml



#35 AR-1260-5

R.T.: 8.413 min  
 Delta R.T.: 0.003 min  
 Response: 7126340  
 Conc: 27.99 ng/ml



#35 AR-1260-5

R.T.: 7.305 min  
 Delta R.T.: -0.004 min  
 Response: 5803117  
 Conc: 36.80 ng/ml