

Data Path : Z:\pestpcbsrv\HPCHEM1\ECD_0\Data\P0060523\
 Data File : P0095498.D
 Signal(s) : Signal #1: ECD1A.ch Signal #2: ECD2B.ch
 Acq On : 06 Jun 2023 01:23
 Operator : YP/AJ
 Sample : 03032-01
 Misc :
 ALS Vial : 42 Sample Multiplier: 1

Instrument :
 ECD_0
 ClientSampleId :
 TP-20-0A

Integration File signal 1: autoint1.e
 Integration File signal 2: autoint2.e
 Quant Time: Jun 06 05:32:36 2023
 Quant Method : Z:\pestpcbsrv\HPCHEM1\ECD_0\methods\P0060123.M
 Quant Title : GC EXTRACTABLES
 QLast Update : Fri Jun 02 06:53:15 2023
 Response via : Initial Calibration
 Integrator: ChemStation

Volume Inj. : 2 µl
 Signal #1 Phase : ZB-MR1 Signal #2 Phase: ZB-MR2
 Signal #1 Info : 30Mx0.32mmx 0.50µ Signal #2 Info : 30M x 0.32mm x 0.25µm

Compound	RT#1	RT#2	Resp#1	Resp#2	ng/ml	ng/ml

System Monitoring Compounds						
1) SA Tetrachlo...	4.437	3.653	111.7E6	52134670	30.295	33.239
2) SA Decachlor...	10.285	8.712	56429224	27577214	20.850	21.317

Target Compounds

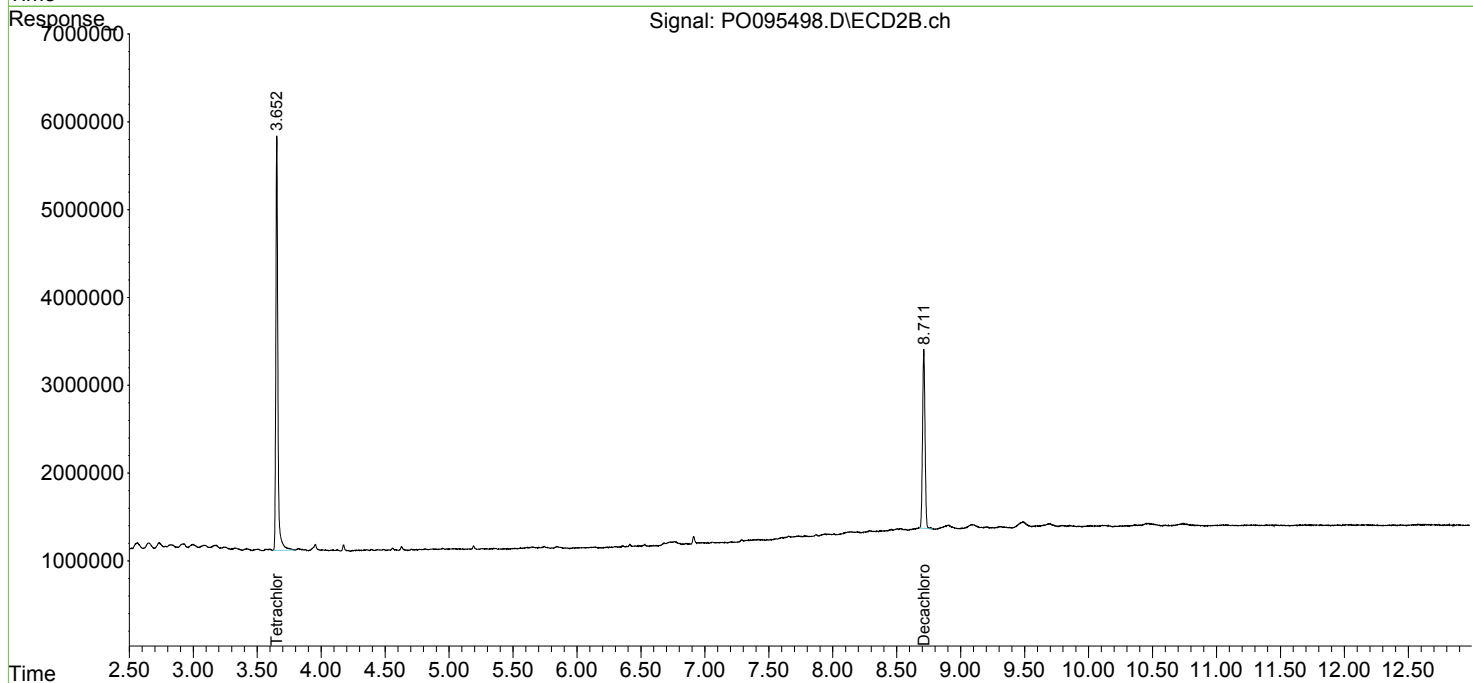
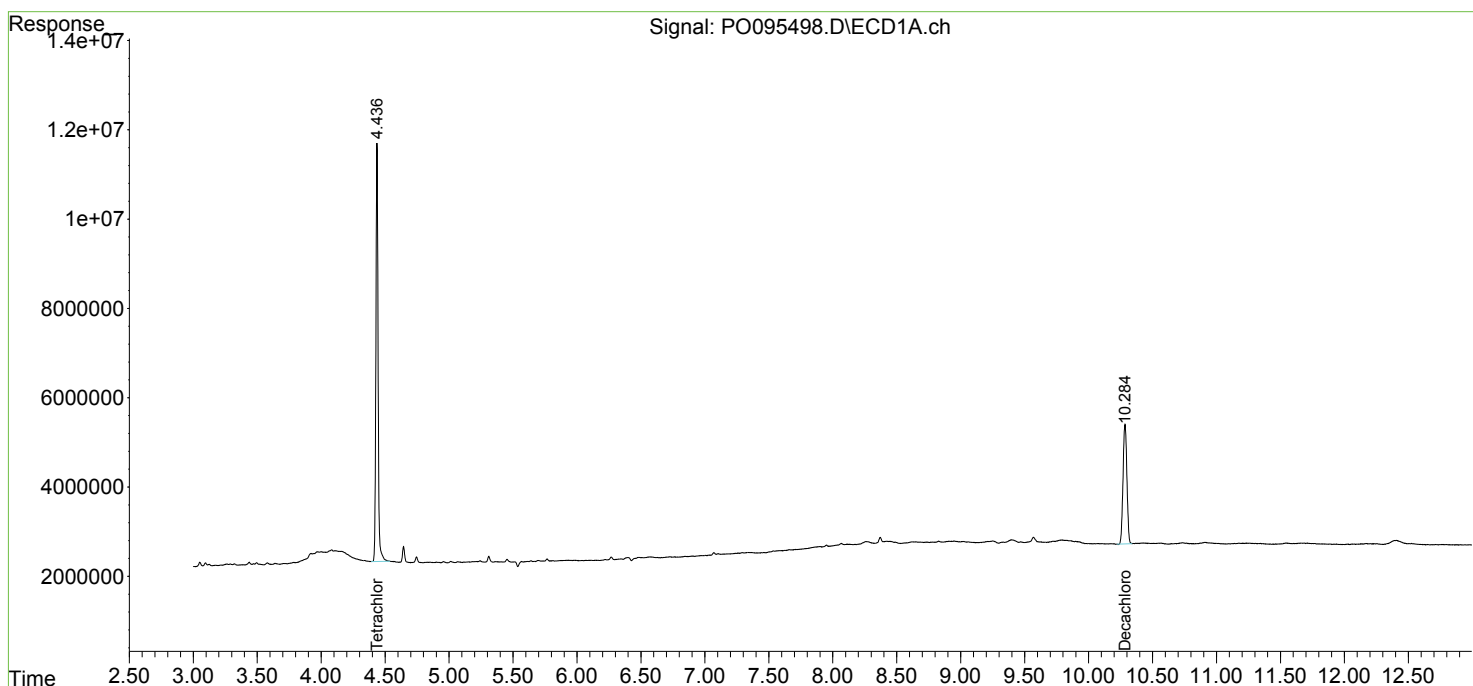
(f)=RT Delta > 1/2 Window (#)=Amounts differ by > 25% (m)=manual int.

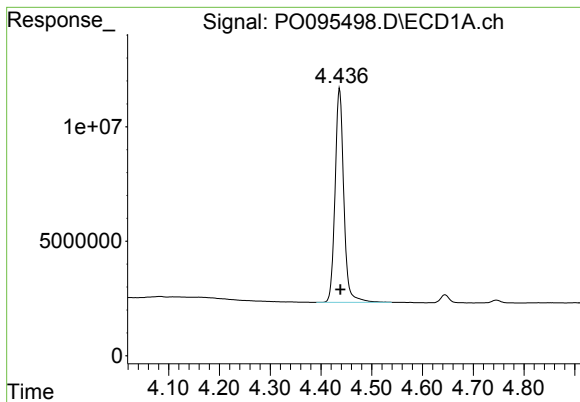
Data Path : Z:\pestpcbsrv\HPCHEM1\ECD_0\Data\P0060523\
 Data File : P0095498.D
 Signal(s) : Signal #1: ECD1A.ch Signal #2: ECD2B.ch
 Acq On : 06 Jun 2023 01:23
 Operator : YP/AJ
 Sample : 03032-01
 Misc :
 ALS Vial : 42 Sample Multiplier: 1

Instrument :
 ECD_0
 ClientSampleId :
 TP-20-0A

Integration File signal 1: autoint1.e
 Integration File signal 2: autoint2.e
 Quant Time: Jun 06 05:32:36 2023
 Quant Method : Z:\pestpcbsrv\HPCHEM1\ECD_0\methods\P0060123.M
 Quant Title : GC EXTRACTABLES
 QLast Update : Fri Jun 02 06:53:15 2023
 Response via : Initial Calibration
 Integrator: ChemStation

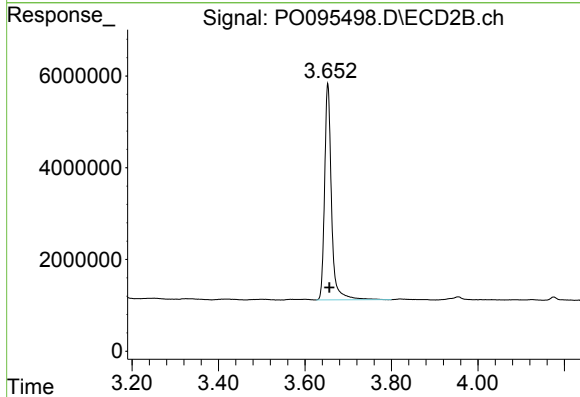
Volume Inj. : 2 µl
 Signal #1 Phase : ZB-MR1 Signal #2 Phase: ZB-MR2
 Signal #1 Info : 30Mx0.32mmx 0.50µ Signal #2 Info : 30M x 0.32mm x 0.25µm



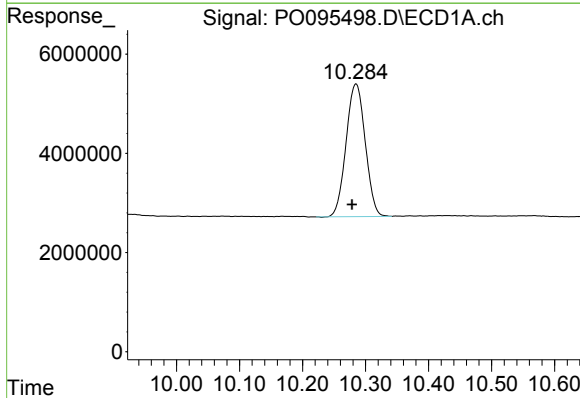


#1 Tetrachloro-m-xylene
 R.T.: 4.437 min
 Delta R.T.: -0.001 min
 Response: 111654381
 Conc: 30.30 ng/ml

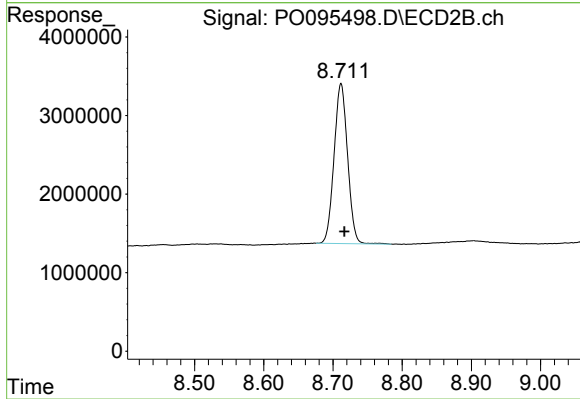
Instrument :
 ECD_O
 ClientSampleId :
 TP-20-0A



#1 Tetrachloro-m-xylene
 R.T.: 3.653 min
 Delta R.T.: -0.004 min
 Response: 52134670
 Conc: 33.24 ng/ml



#2 Decachlorobiphenyl
 R.T.: 10.285 min
 Delta R.T.: 0.007 min
 Response: 56429224
 Conc: 20.85 ng/ml



#2 Decachlorobiphenyl
 R.T.: 8.712 min
 Delta R.T.: -0.005 min
 Response: 27577214
 Conc: 21.32 ng/ml