

Data Path : Z:\pestpcbsrv\HPCHEM1\ECD\_0\Data\P0060523\  
 Data File : P0095503.D  
 Signal(s) : Signal #1: ECD1A.ch Signal #2: ECD2B.ch  
 Acq On : 06 Jun 2023 03:16  
 Operator : YP/AJ  
 Sample : AR1254CCC500  
 Misc :  
 ALS Vial : 6 Sample Multiplier: 1

**Instrument :**  
 ECD\_0  
**ClientSampleId :**  
 AR1254CCC500

Integration File signal 1: autoint1.e  
 Integration File signal 2: autoint2.e  
 Quant Time: Jun 06 05:34:39 2023  
 Quant Method : Z:\pestpcbsrv\HPCHEM1\ECD\_0\methods\P0060123.M  
 Quant Title : GC EXTRACTABLES  
 QLast Update : Fri Jun 02 06:53:15 2023  
 Response via : Initial Calibration  
 Integrator: ChemStation

Volume Inj. : 2 µl  
 Signal #1 Phase : ZB-MR1 Signal #2 Phase: ZB-MR2  
 Signal #1 Info : 30Mx0.32mmx 0.50µ Signal #2 Info : 30M x 0.32mm x 0.25µm

Compound	RT#1	RT#2	Resp#1	Resp#2	ng/ml	ng/ml
-----						
System Monitoring Compounds						
1) SA Tetrachlo...	4.437	3.654	191.9E6	88201952	52.072	56.233
2) SA Decachlor...	10.286	8.712	134.4E6	68386856	49.654	52.862
Target Compounds						
26) L6 AR-1254-1	6.483	5.557	60926748	45163436	477.743	513.193
27) L6 AR-1254-2	6.703	5.705	89032858	40344629	469.247	506.122
28) L6 AR-1254-3	7.072	6.112	89411427	59989970	471.270	490.807
29) L6 AR-1254-4	7.360	6.342	65323290	35618572	461.391	471.966
30) L6 AR-1254-5	7.782	6.763	72653669	53345497	458.325	476.787
-----						

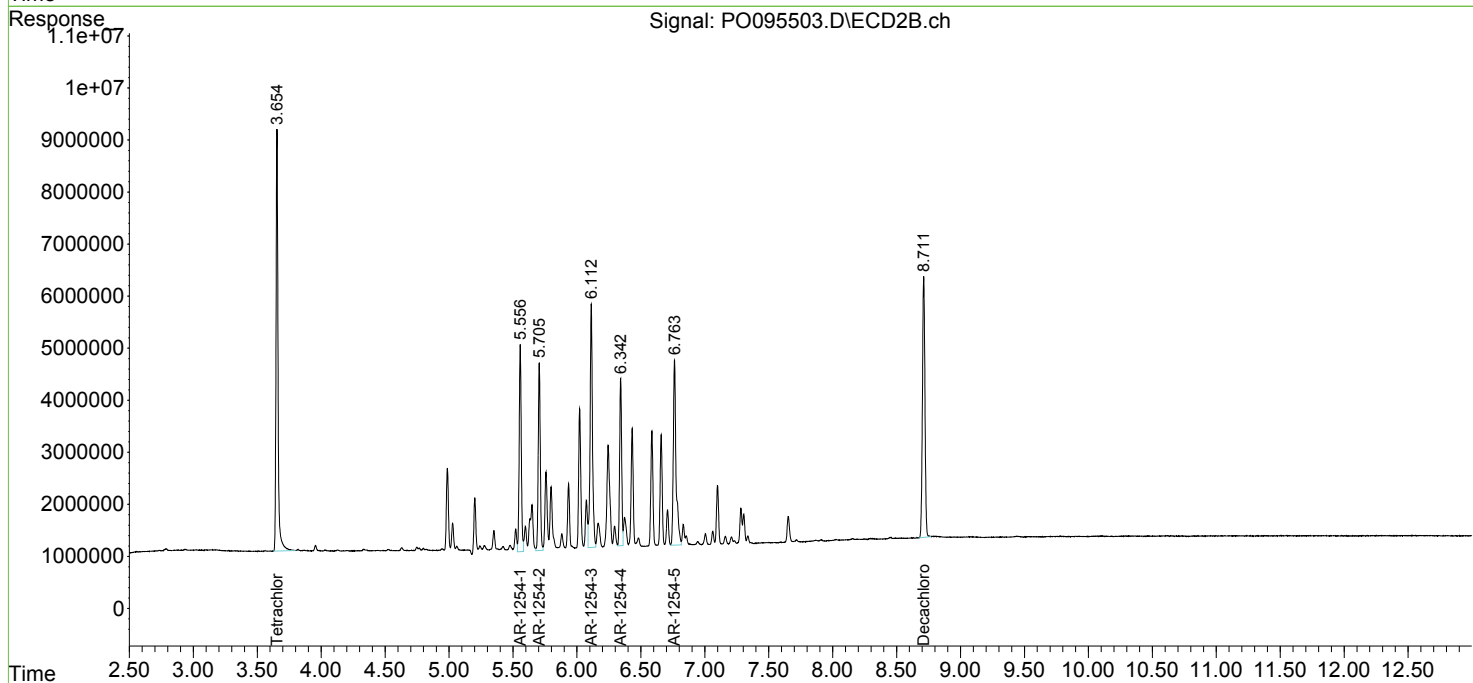
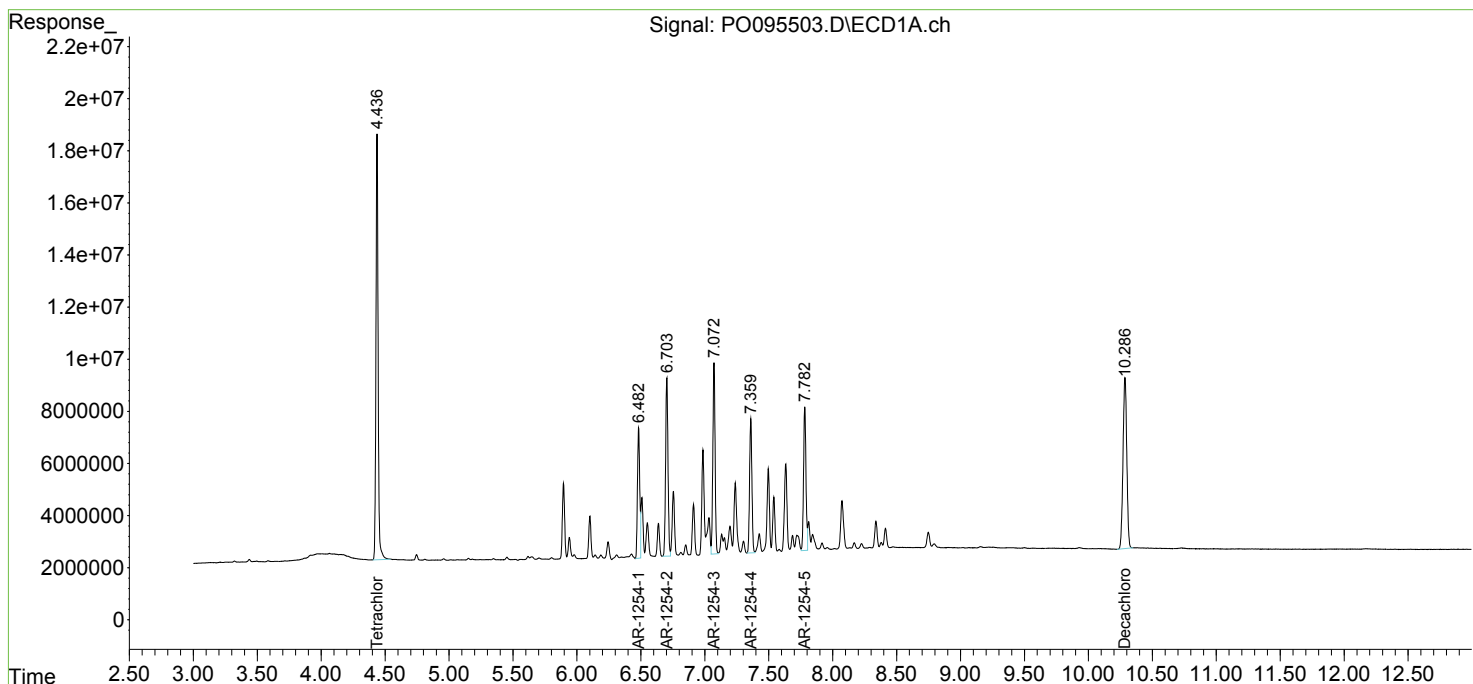
(f)=RT Delta > 1/2 Window (#)=Amounts differ by > 25% (m)=manual int.

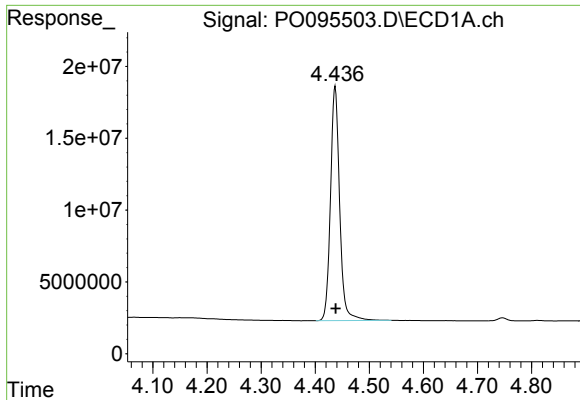
Data Path : Z:\pestpcbsrv\HPCHEM1\ECD\_O\Data\P0060523\  
 Data File : P0095503.D  
 Signal(s) : Signal #1: ECD1A.ch Signal #2: ECD2B.ch  
 Acq On : 06 Jun 2023 03:16  
 Operator : YP/AJ  
 Sample : AR1254CCC500  
 Misc :  
 ALS Vial : 6 Sample Multiplier: 1

Instrument :  
 ECD\_O  
 ClientSampleId :  
 AR1254CCC500

Integration File signal 1: autoint1.e  
 Integration File signal 2: autoint2.e  
 Quant Time: Jun 06 05:34:39 2023  
 Quant Method : Z:\pestpcbsrv\HPCHEM1\ECD\_O\methods\P0060123.M  
 Quant Title : GC EXTRACTABLES  
 QLast Update : Fri Jun 02 06:53:15 2023  
 Response via : Initial Calibration  
 Integrator: ChemStation

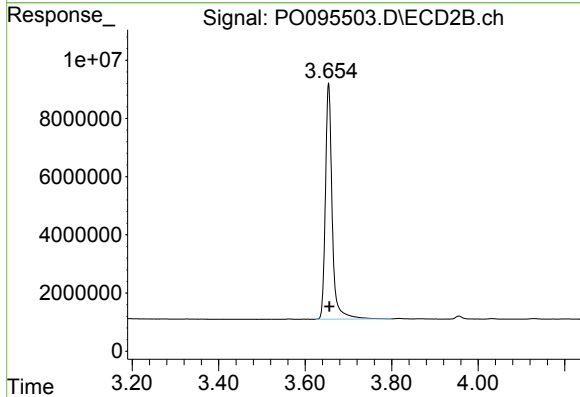
Volume Inj. : 2 µl  
 Signal #1 Phase : ZB-MR1 Signal #2 Phase: ZB-MR2  
 Signal #1 Info : 30Mx0.32mmx 0.50µm Signal #2 Info : 30M x 0.32mm x 0.25µm



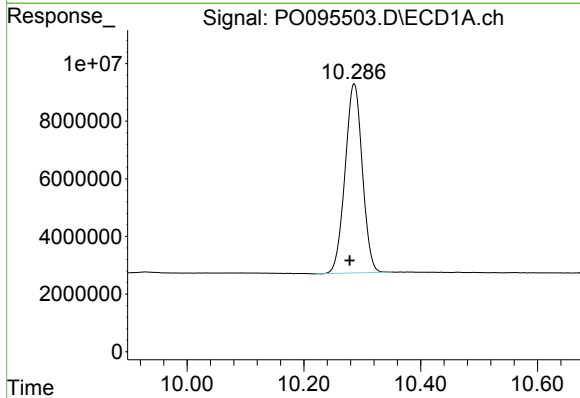


#1 Tetrachloro-m-xylene  
 R.T.: 4.437 min  
 Delta R.T.: -0.001 min  
 Response: 191914379  
 Conc: 52.07 ng/ml

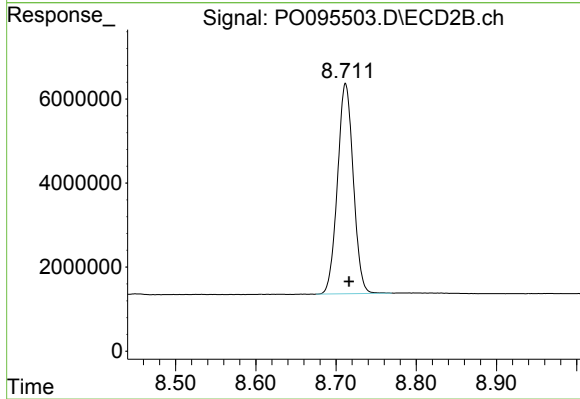
Instrument :  
 ECD\_O  
 ClientSampleId :  
 AR1254CCC500



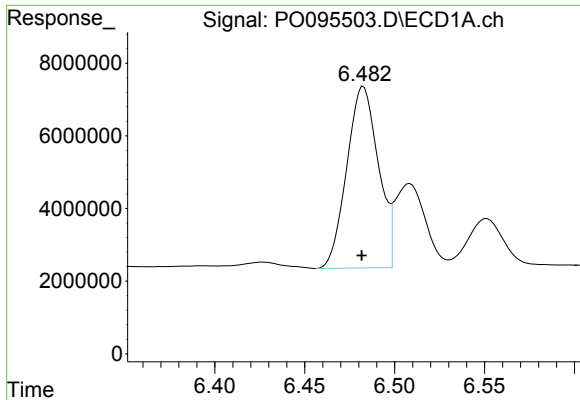
#1 Tetrachloro-m-xylene  
 R.T.: 3.654 min  
 Delta R.T.: -0.002 min  
 Response: 88201952  
 Conc: 56.23 ng/ml



#2 Decachlorobiphenyl  
 R.T.: 10.286 min  
 Delta R.T.: 0.008 min  
 Response: 134387382  
 Conc: 49.65 ng/ml



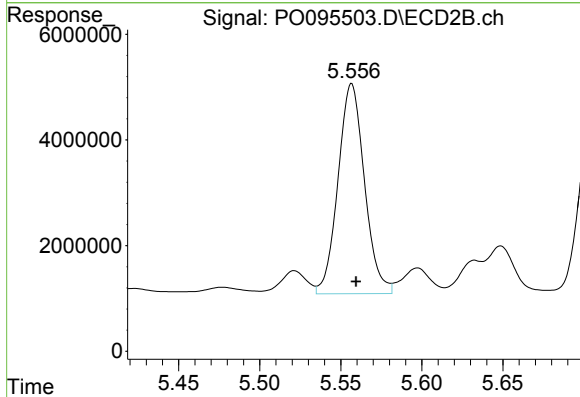
#2 Decachlorobiphenyl  
 R.T.: 8.712 min  
 Delta R.T.: -0.005 min  
 Response: 68386856  
 Conc: 52.86 ng/ml



#26 AR-1254-1

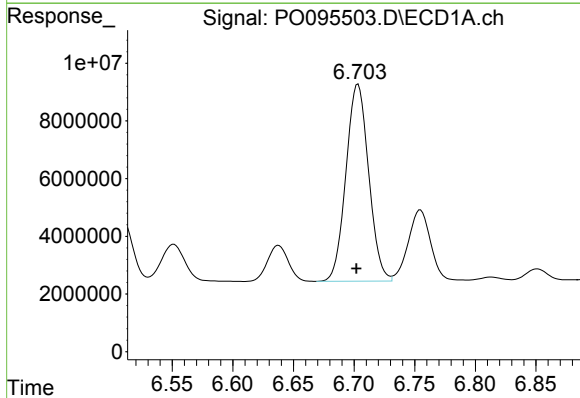
R.T.: 6.483 min  
 Delta R.T.: 0.000 min  
 Response: 60926748  
 Conc: 477.74 ng/ml

Instrument :  
 ECD\_O  
 ClientSampleId :  
 AR1254CCC500



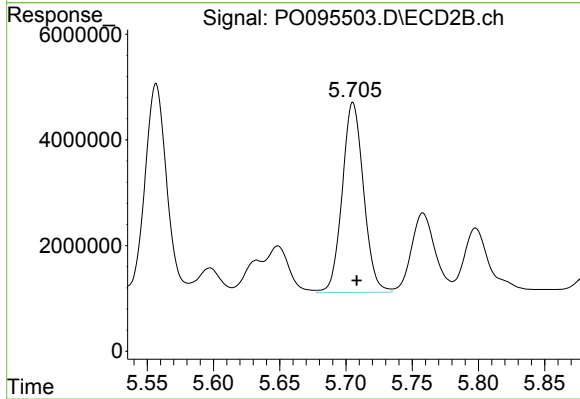
#26 AR-1254-1

R.T.: 5.557 min  
 Delta R.T.: -0.003 min  
 Response: 45163436  
 Conc: 513.19 ng/ml



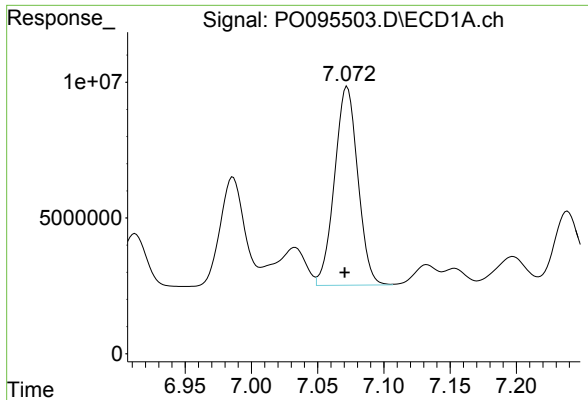
#27 AR-1254-2

R.T.: 6.703 min  
 Delta R.T.: 0.001 min  
 Response: 89032858  
 Conc: 469.25 ng/ml



#27 AR-1254-2

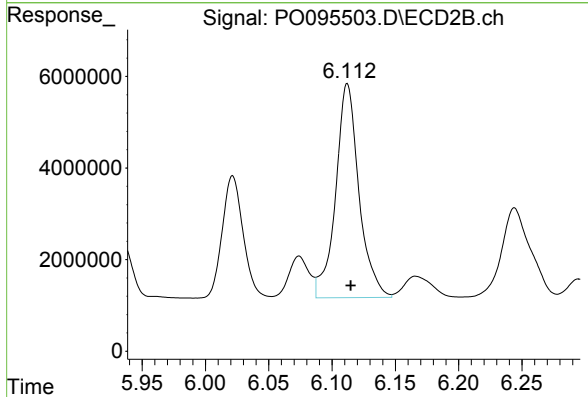
R.T.: 5.705 min  
 Delta R.T.: -0.003 min  
 Response: 40344629  
 Conc: 506.12 ng/ml



#28 AR-1254-3

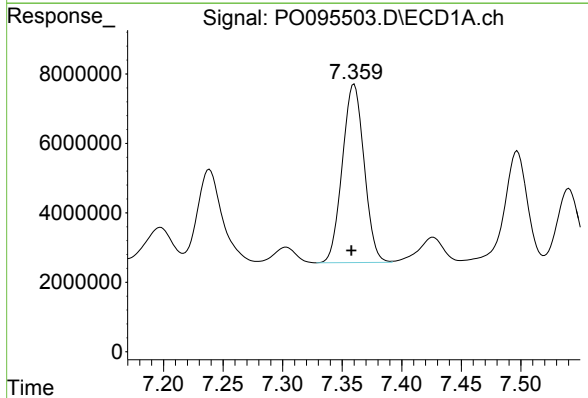
R.T.: 7.072 min  
 Delta R.T.: 0.002 min  
 Response: 89411427  
 Conc: 471.27 ng/ml

Instrument :  
 ECD\_O  
 ClientSampleId :  
 AR1254CCC500



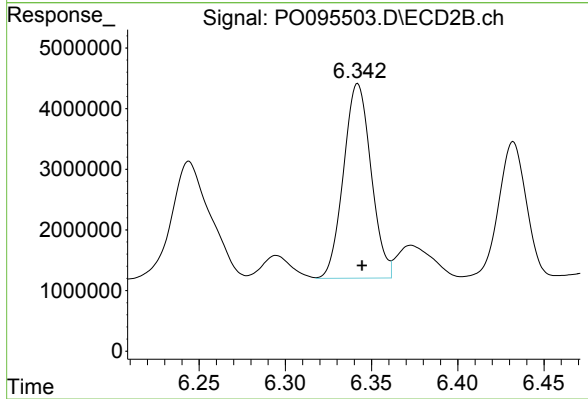
#28 AR-1254-3

R.T.: 6.112 min  
 Delta R.T.: -0.003 min  
 Response: 59989970  
 Conc: 490.81 ng/ml



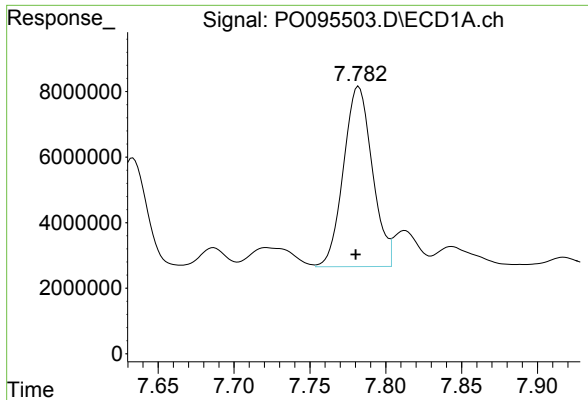
#29 AR-1254-4

R.T.: 7.360 min  
 Delta R.T.: 0.002 min  
 Response: 65323290  
 Conc: 461.39 ng/ml



#29 AR-1254-4

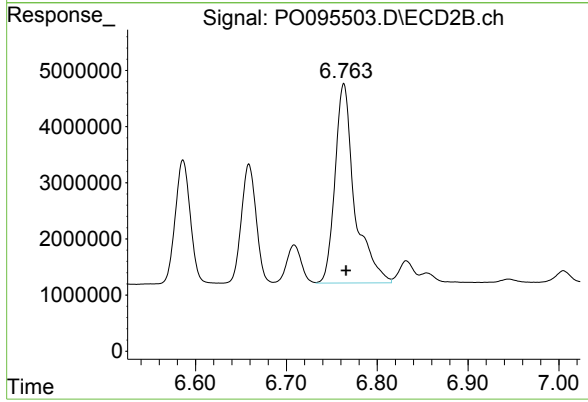
R.T.: 6.342 min  
 Delta R.T.: -0.003 min  
 Response: 35618572  
 Conc: 471.97 ng/ml



#30 AR-1254-5

R.T.: 7.782 min  
Delta R.T.: 0.002 min  
Response: 72653669  
Conc: 458.32 ng/ml

Instrument :  
ECD\_O  
ClientSampleId :  
AR1254CCC500



#30 AR-1254-5

R.T.: 6.763 min  
Delta R.T.: -0.003 min  
Response: 53345497  
Conc: 476.79 ng/ml