

Data Path : Z:\pestpcbsrv\HPCHEM1\ECD_0\Data\P0060525\
 Data File : PO111487.D
 Signal(s) : Signal #1: ECD1A.ch Signal #2: ECD2B.ch
 Acq On : 05 Jun 2025 10:33
 Operator : YP/AJ
 Sample : I.BLK
 Misc :
 ALS Vial : 2 Sample Multiplier: 1

Instrument :
 ECD_0
 ClientSampleId :
 I.BLK

Integration File signal 1: autoint1.e
 Integration File signal 2: autoint2.e
 Quant Time: Jun 05 12:03:06 2025
 Quant Method : Z:\pestpcbsrv\HPCHEM1\ECD_0\methods\P0051525.M
 Quant Title : GC EXTRACTABLES
 QLast Update : Thu May 15 07:11:53 2025
 Response via : Initial Calibration
 Integrator: ChemStation

Volume Inj. : 2 µl
 Signal #1 Phase : ZB-MR1 Signal #2 Phase: ZB-MR2
 Signal #1 Info : 30Mx0.32mmx 0.50µ Signal #2 Info : 30M x 0.32mm x 0.25µm

Compound	RT#1	RT#2	Resp#1	Resp#2	ng/ml	ng/ml

System Monitoring Compounds						
1) SA Tetrachlo...	3.679	3.675	120.6E6	102.2E6	20.504	18.745
2) SA Decachlor...	8.716	8.665	101.5E6	32606544	19.660	17.624
Target Compounds						
3) L1 AR-1016-1	4.768	4.760	1385831	334562	6.158	1.752 #
4) L1 AR-1016-2	4.780	4.760	2482317	334562	7.783	1.207 #
5) L1 AR-1016-3	4.843	4.947	1593279	775043	7.338	5.306 #
6) L1 AR-1016-4	4.975	5.006	2277402	619928	13.077	5.162 #
7) L1 AR-1016-5	5.219	5.191	943985	1198289	5.364	7.761 #
8) L2 AR-1221-1	3.894	3.890	266326	51222	3.057	0.694 #
9) L2 AR-1221-2	3.981	3.974	2711691	2129235	42.567	39.130
10) L2 AR-1221-3	4.056	4.050	39897	58616	0.207	0.351 #
11) L3 AR-1232-1	4.056	4.050	39897	58616	0.260	0.449 #
12) L3 AR-1232-2	4.541	4.760	631762	334562	7.709	2.551 #
13) L3 AR-1232-3	4.780	4.947	2482317	775043	16.232	11.386 #
14) L3 AR-1232-4	4.975	5.019	2277402	1833530	27.688	29.728
15) L3 AR-1232-5	5.029	5.191	1860826	1198289	34.295	18.230 #
16) L4 AR-1242-1	4.768	4.760	1385831	334562	7.248	2.077 #
17) L4 AR-1242-2	4.780	4.760	2482317	334562	9.126	1.426 #
18) L4 AR-1242-3	4.843	4.947	1593279	775043	8.567	6.270 #
19) L4 AR-1242-4	4.975	5.019	2277402	1833530	15.409	14.833
20) L4 AR-1242-5	5.622	5.544	3923042	1256518	25.222	8.267 #
21) L5 AR-1248-1	4.768	4.760	1385831	334562	9.048	2.579 #
22) L5 AR-1248-2	5.029	5.006	1860826	619928	9.280	3.524 #
23) L5 AR-1248-3	5.219	5.019	943985	1833530	3.687	9.773 #
24) L5 AR-1248-4	5.581	5.191	3966691	1198289	10.952	5.451 #
25) L5 AR-1248-5	5.622	5.602	3923042	597930	14.970	2.739 #
26) L6 AR-1254-1	5.581	5.544	3966691	1256518	10.450	3.878 #
27) L6 AR-1254-2	5.732	5.716	2470995	1124887	7.562	3.971 #
28) L6 AR-1254-3	6.132	6.116	1321988	1556393	2.513	3.607 #
29) L6 AR-1254-4	6.341	6.324	2993167	751785	8.906	3.039 #
30) L6 AR-1254-5	6.785	6.763	2492894	90566	5.254	0.262 #
31) L7 AR-1260-1	6.290	6.226	473911	685446	1.554	2.743 #
33) L7 AR-1260-3	6.846	6.583	831896	74592	2.386	0.260 #
34) L7 AR-1260-4	7.086	7.045	266135	49361	0.951	0.246 #
35) L7 AR-1260-5	7.308	7.282	303316	120896	0.421	0.263 #
36) L8 AR-1262-1	6.846	6.795	831896	46111	1.709	0.135 #
37) L8 AR-1262-2	7.308	7.282	303316	120896	0.375	0.240 #
38) L8 AR-1262-3	7.599	7.567	463214	333789	1.369	1.779 #
39) L8 AR-1262-4	7.688	7.614	74993	594119	0.127	1.799 #
40) L8 AR-1262-5	8.140	8.141	365030	128529	1.280	1.144
41) L9 AR-1268-1	7.599	7.567	463214	333789	0.478	0.630 #
42) L9 AR-1268-2	7.688	7.614	74993	594119	0.084	1.232 #

Data Path : Z:\pestpcbsrv\HPCHEM1\ECD_0\Data\P0060525\
 Data File : P0111487.D
 Signal(s) : Signal #1: ECD1A.ch Signal #2: ECD2B.ch
 Acq On : 05 Jun 2025 10:33
 Operator : YP/AJ
 Sample : I.BLK
 Misc :
 ALS Vial : 2 Sample Multiplier: 1

Instrument :
 ECD_0
 ClientSampleId :
 I.BLK

Integration File signal 1: autoint1.e
 Integration File signal 2: autoint2.e
 Quant Time: Jun 05 12:03:06 2025
 Quant Method : Z:\pestpcbsrv\HPCHEM1\ECD_0\methods\P0051525.M
 Quant Title : GC EXTRACTABLES
 QLast Update : Thu May 15 07:11:53 2025
 Response via : Initial Calibration
 Integrator: ChemStation

Volume Inj. : 2 µl
 Signal #1 Phase : ZB-MR1 Signal #2 Phase: ZB-MR2
 Signal #1 Info : 30Mx0.32mmx 0.50µ Signal #2 Info : 30M x 0.32mm x 0.25µm

	Compound	RT#1	RT#2	Resp#1	Resp#2	ng/ml	ng/ml
43)	L9 AR-1268-3	7.874	7.827	228901	198027	0.302	0.568 #
44)	L9 AR-1268-4	8.140	8.141	365030	128529	1.118	1.010
45)	L9 AR-1268-5	8.458	8.411	478105	298168	0.222	0.396 #

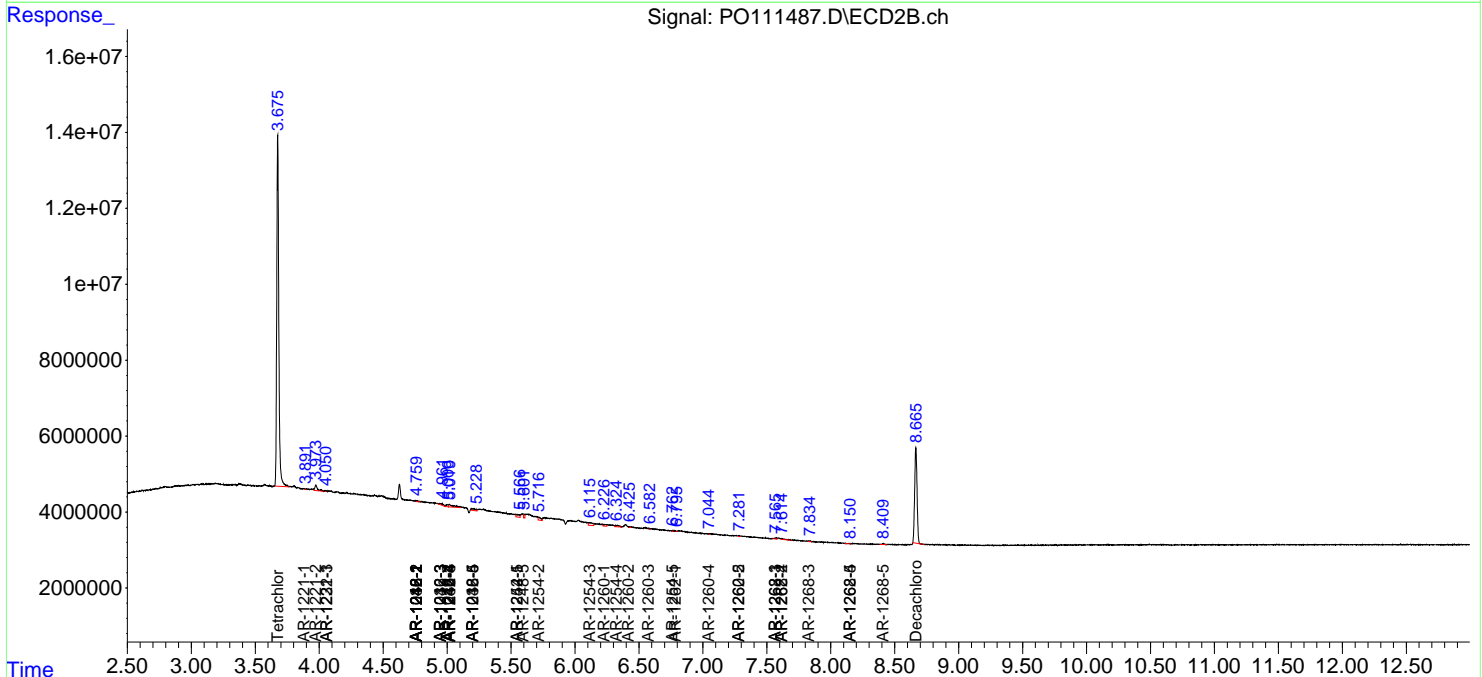
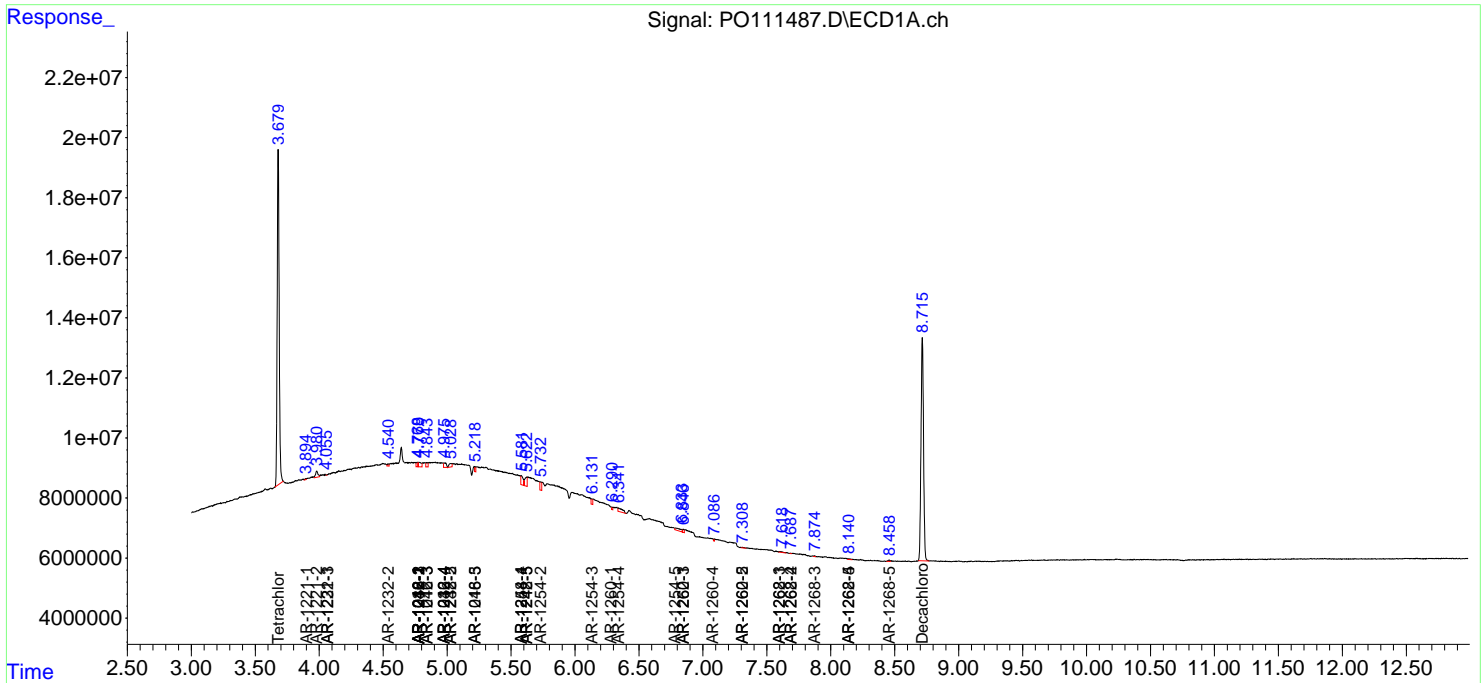
(f)=RT Delta > 1/2 Window (#)=Amounts differ by > 25% (m)=manual int.

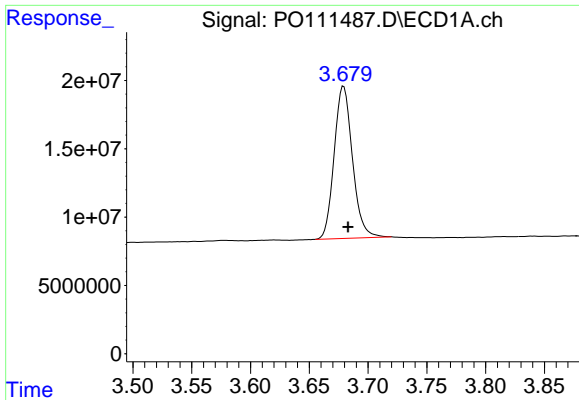
Data Path : Z:\pestpcbsrv\HPCHEM1\ECD_O\Data\PO060525\
 Data File : PO111487.D
 Signal(s) : Signal #1: ECD1A.ch Signal #2: ECD2B.ch
 Acq On : 05 Jun 2025 10:33
 Operator : YP/AJ
 Sample : I.BLK
 Misc :
 ALS Vial : 2 Sample Multiplier: 1

Instrument :
 ECD_O
 ClientSampleId :
 I.BLK

Integration File signal 1: autoint1.e
 Integration File signal 2: autoint2.e
 Quant Time: Jun 05 12:03:06 2025
 Quant Method : Z:\pestpcbsrv\HPCHEM1\ECD_O\methods\PO051525.M
 Quant Title : GC EXTRACTABLES
 QLast Update : Thu May 15 07:11:53 2025
 Response via : Initial Calibration
 Integrator: ChemStation

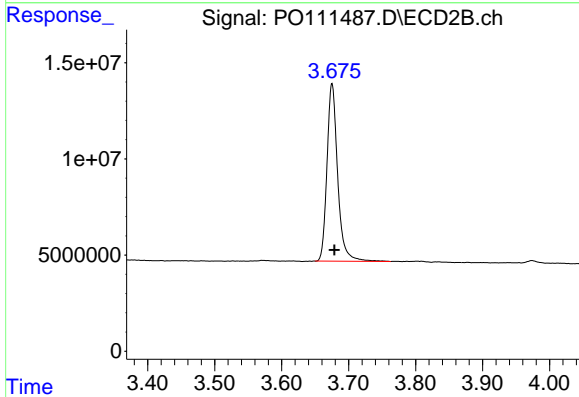
Volume Inj. : 2 µl
 Signal #1 Phase : ZB-MR1 Signal #2 Phase: ZB-MR2
 Signal #1 Info : 30Mx0.32mmx 0.50µ Signal #2 Info : 30M x 0.32mm x 0.25µm



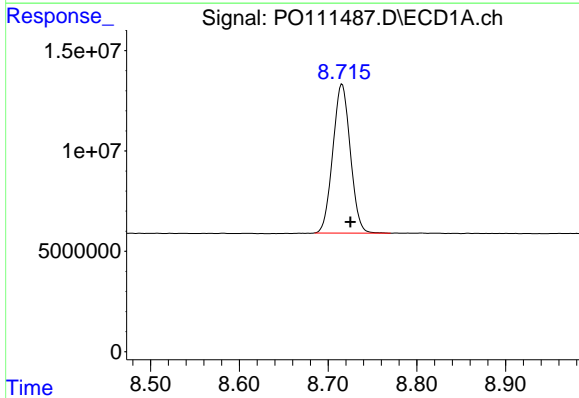


#1 Tetrachloro-m-xylene
 R.T.: 3.679 min
 Delta R.T.: -0.004 min
 Response: 120630014
 Conc: 20.50 ng/ml

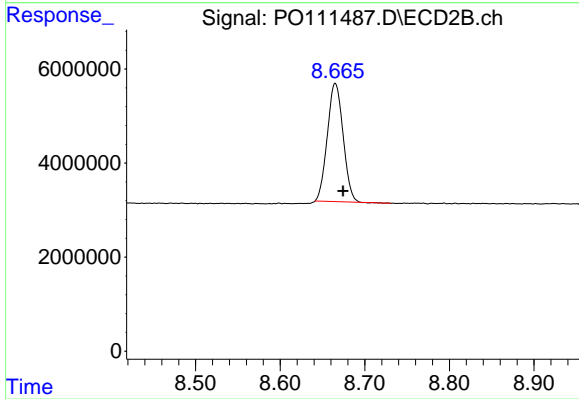
Instrument :
 ECD_O
 ClientSampleId :
 I.BLK



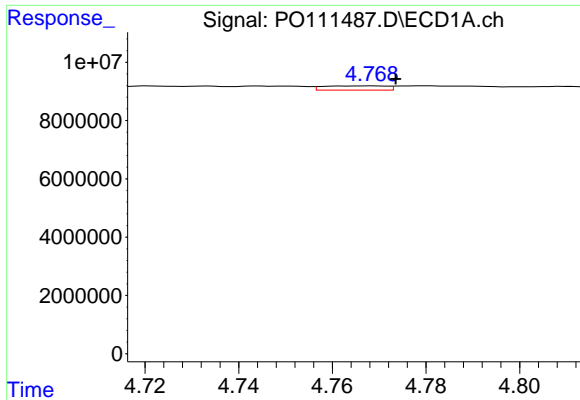
#1 Tetrachloro-m-xylene
 R.T.: 3.675 min
 Delta R.T.: -0.004 min
 Response: 102189088
 Conc: 18.75 ng/ml



#2 Decachlorobiphenyl
 R.T.: 8.716 min
 Delta R.T.: -0.009 min
 Response: 101500177
 Conc: 19.66 ng/ml



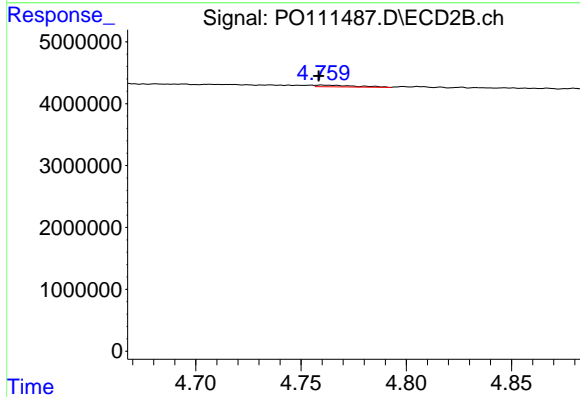
#2 Decachlorobiphenyl
 R.T.: 8.665 min
 Delta R.T.: -0.009 min
 Response: 32606544
 Conc: 17.62 ng/ml



#3 AR-1016-1

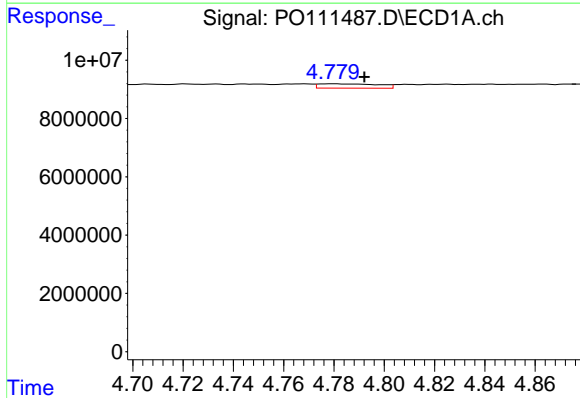
R.T.: 4.768 min
 Delta R.T.: -0.005 min
 Response: 1385831
 Conc: 6.16 ng/ml

Instrument :
 ECD_O
 ClientSampleId :
 I.BLK



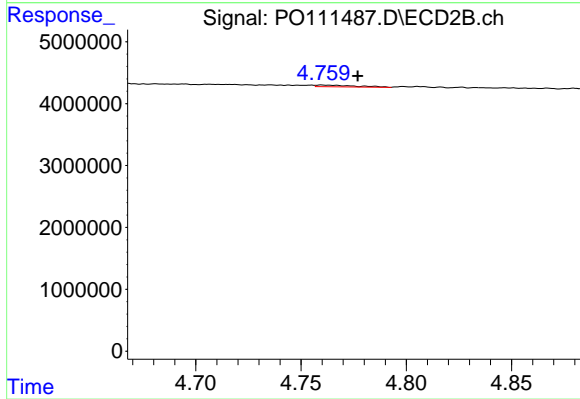
#3 AR-1016-1

R.T.: 4.760 min
 Delta R.T.: 0.002 min
 Response: 334562
 Conc: 1.75 ng/ml



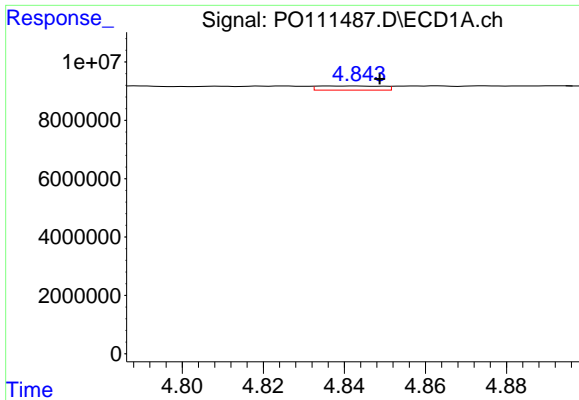
#4 AR-1016-2

R.T.: 4.780 min
 Delta R.T.: -0.012 min
 Response: 2482317
 Conc: 7.78 ng/ml



#4 AR-1016-2

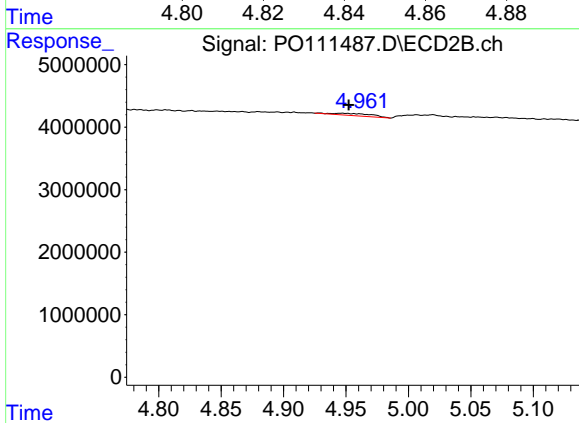
R.T.: 4.760 min
 Delta R.T.: -0.017 min
 Response: 334562
 Conc: 1.21 ng/ml



#5 AR-1016-3

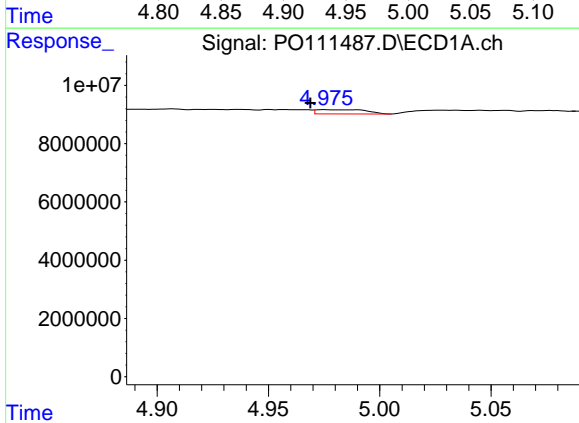
R.T.: 4.843 min
 Delta R.T.: -0.006 min
 Response: 1593279
 Conc: 7.34 ng/ml

Instrument :
 ECD_O
 ClientSampleId :
 I.BLK



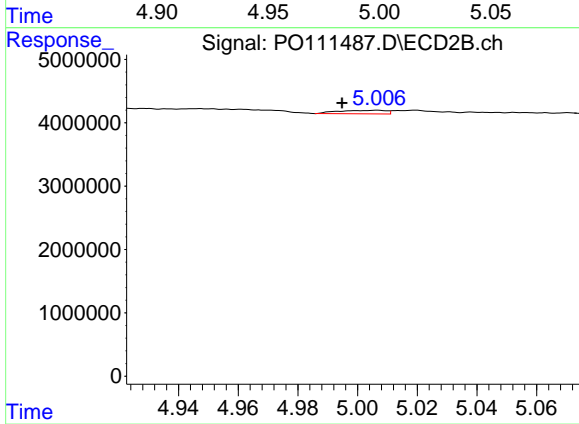
#5 AR-1016-3

R.T.: 4.947 min
 Delta R.T.: -0.005 min
 Response: 775043
 Conc: 5.31 ng/ml



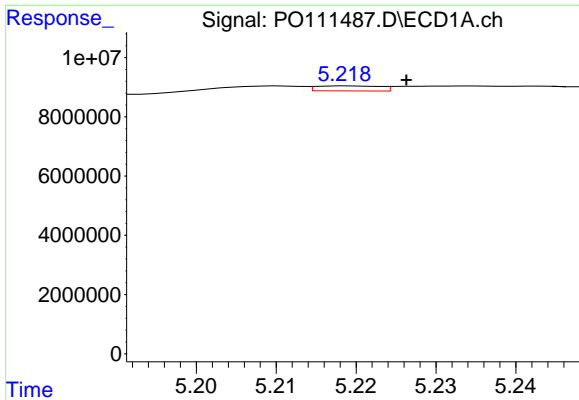
#6 AR-1016-4

R.T.: 4.975 min
 Delta R.T.: 0.007 min
 Response: 2277402
 Conc: 13.08 ng/ml



#6 AR-1016-4

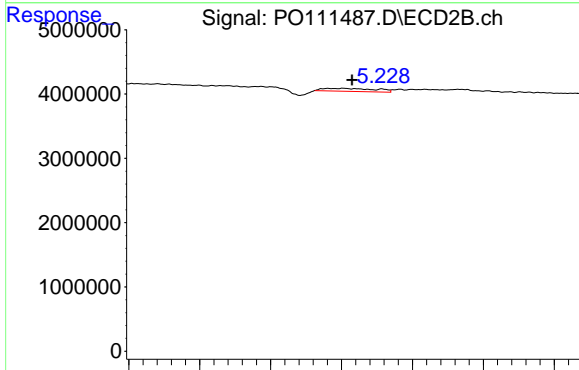
R.T.: 5.006 min
 Delta R.T.: 0.012 min
 Response: 619928
 Conc: 5.16 ng/ml



#7 AR-1016-5

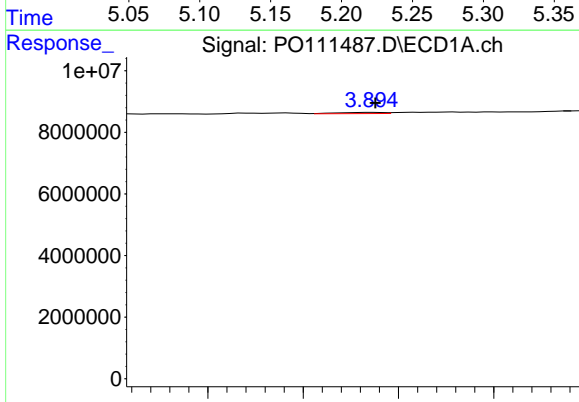
R.T.: 5.219 min
 Delta R.T.: -0.007 min
 Response: 943985
 Conc: 5.36 ng/ml

Instrument :
 ECD_O
 ClientSampleId :
 I.BLK



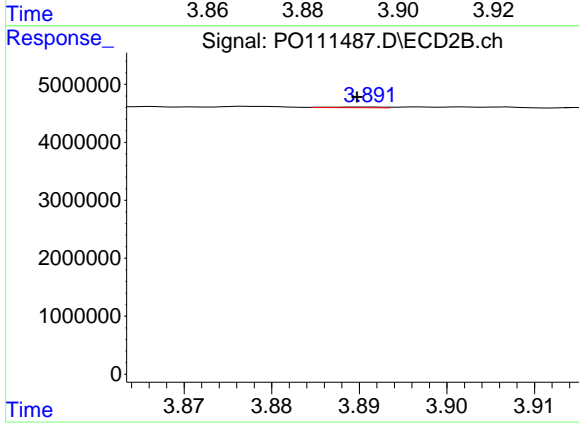
#7 AR-1016-5

R.T.: 5.191 min
 Delta R.T.: -0.017 min
 Response: 1198289
 Conc: 7.76 ng/ml



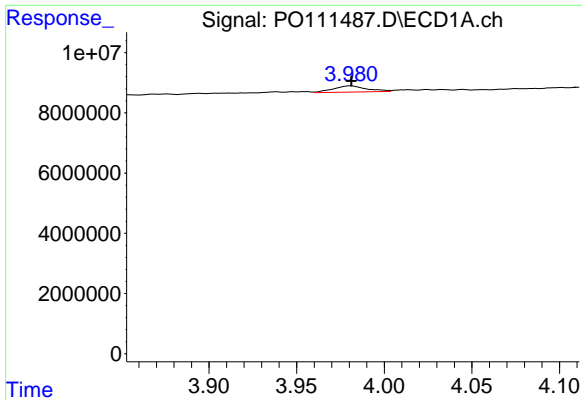
#8 AR-1221-1

R.T.: 3.894 min
 Delta R.T.: 0.000 min
 Response: 266326
 Conc: 3.06 ng/ml



#8 AR-1221-1

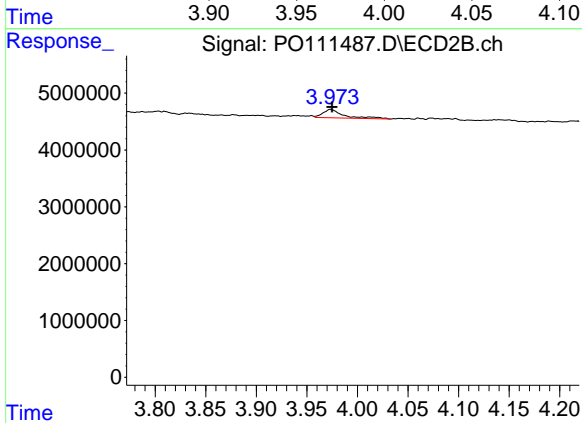
R.T.: 3.890 min
 Delta R.T.: 0.000 min
 Response: 51222
 Conc: 0.69 ng/ml



#9 AR-1221-2

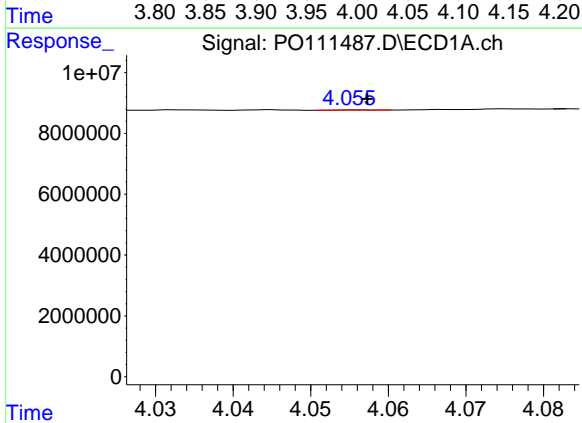
R.T.: 3.981 min
 Delta R.T.: 0.000 min
 Response: 2711691
 Conc: 42.57 ng/ml

Instrument :
 ECD_O
 ClientSampleId :
 I.BLK



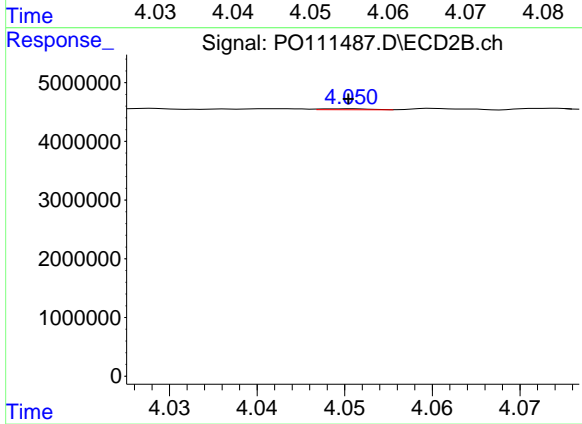
#9 AR-1221-2

R.T.: 3.974 min
 Delta R.T.: -0.001 min
 Response: 2129235
 Conc: 39.13 ng/ml



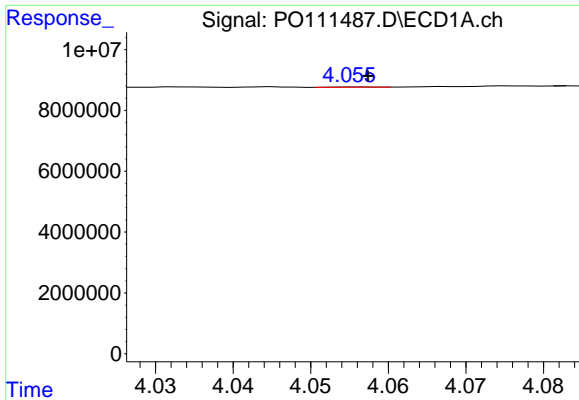
#10 AR-1221-3

R.T.: 4.056 min
 Delta R.T.: -0.001 min
 Response: 39897
 Conc: 0.21 ng/ml



#10 AR-1221-3

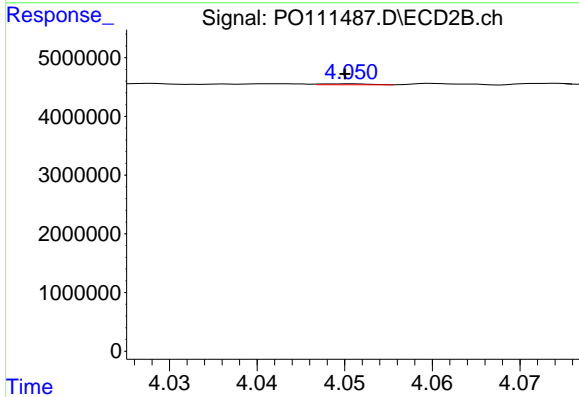
R.T.: 4.050 min
 Delta R.T.: 0.000 min
 Response: 58616
 Conc: 0.35 ng/ml



#11 AR-1232-1

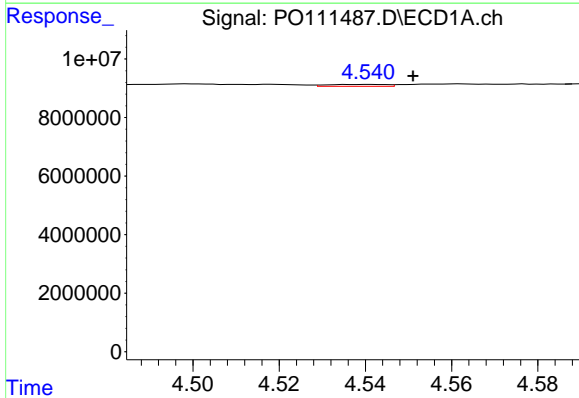
R.T.: 4.056 min
 Delta R.T.: -0.001 min
 Response: 39897
 Conc: 0.26 ng/ml

Instrument :
 ECD_O
 ClientSampleId :
 I.BLK



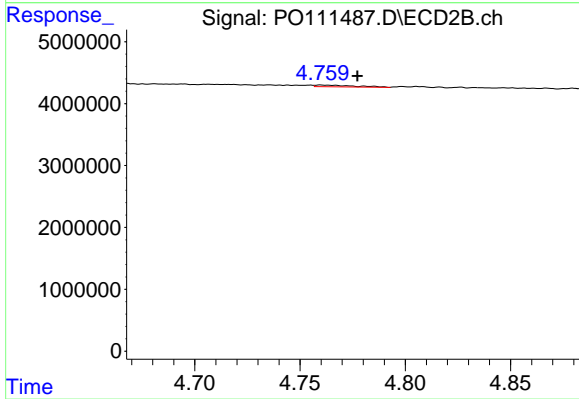
#11 AR-1232-1

R.T.: 4.050 min
 Delta R.T.: 0.000 min
 Response: 58616
 Conc: 0.45 ng/ml



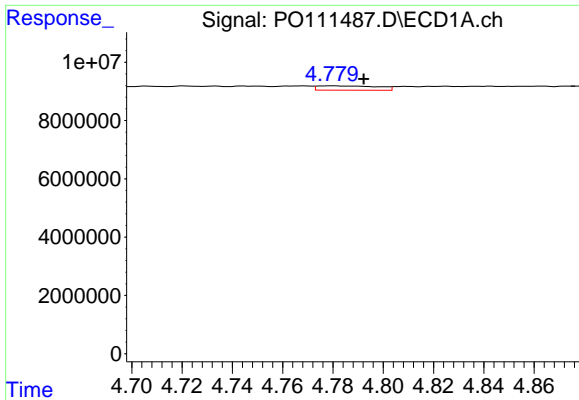
#12 AR-1232-2

R.T.: 4.541 min
 Delta R.T.: -0.010 min
 Response: 631762
 Conc: 7.71 ng/ml



#12 AR-1232-2

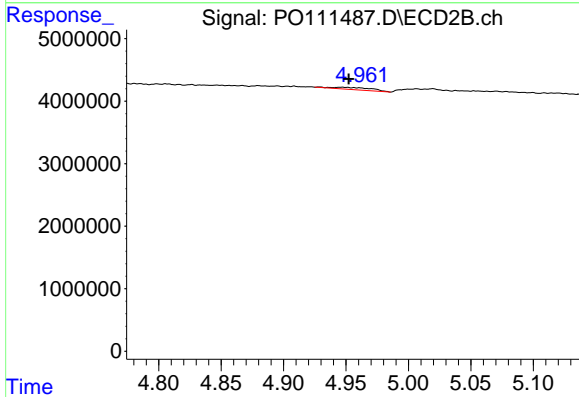
R.T.: 4.760 min
 Delta R.T.: -0.017 min
 Response: 334562
 Conc: 2.55 ng/ml



#13 AR-1232-3

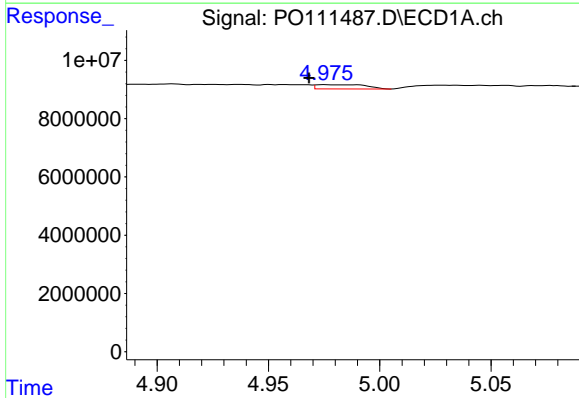
R.T.: 4.780 min
 Delta R.T.: -0.012 min
 Response: 2482317
 Conc: 16.23 ng/ml

Instrument :
 ECD_O
 ClientSampleId :
 I.BLK



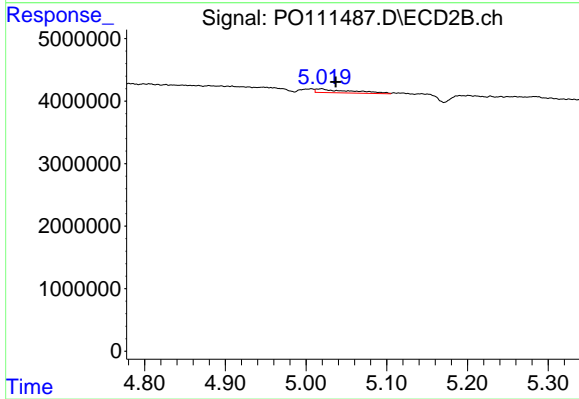
#13 AR-1232-3

R.T.: 4.947 min
 Delta R.T.: -0.005 min
 Response: 775043
 Conc: 11.39 ng/ml



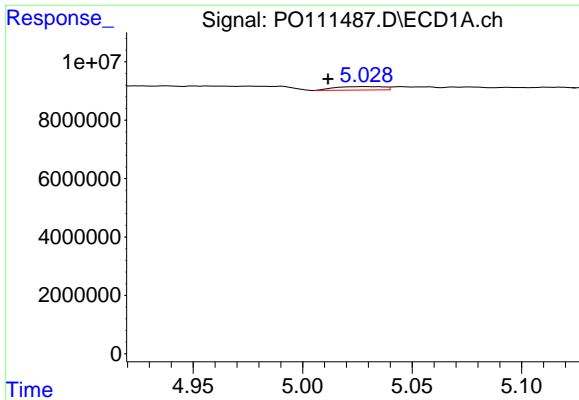
#14 AR-1232-4

R.T.: 4.975 min
 Delta R.T.: 0.007 min
 Response: 2277402
 Conc: 27.69 ng/ml



#14 AR-1232-4

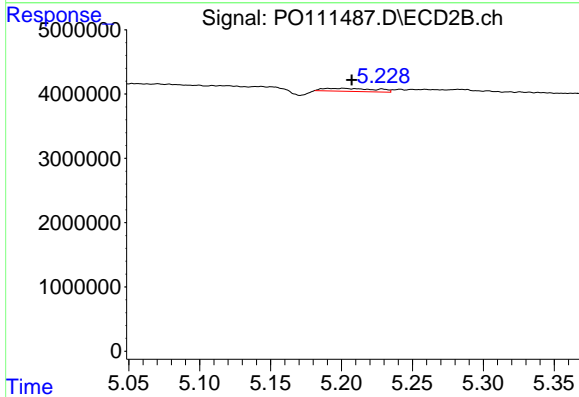
R.T.: 5.019 min
 Delta R.T.: -0.017 min
 Response: 1833530
 Conc: 29.73 ng/ml



#15 AR-1232-5

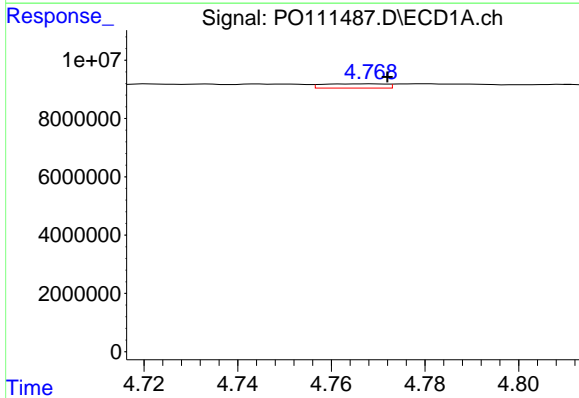
R.T.: 5.029 min
 Delta R.T.: 0.017 min
 Response: 1860826
 Conc: 34.30 ng/ml

Instrument :
 ECD_O
 ClientSampleId :
 I.BLK



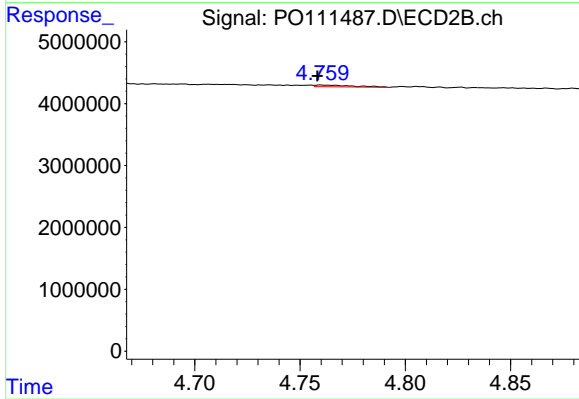
#15 AR-1232-5

R.T.: 5.191 min
 Delta R.T.: -0.016 min
 Response: 1198289
 Conc: 18.23 ng/ml



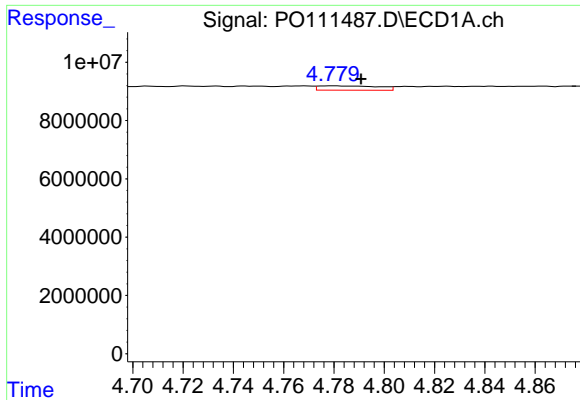
#16 AR-1242-1

R.T.: 4.768 min
 Delta R.T.: -0.004 min
 Response: 1385831
 Conc: 7.25 ng/ml



#16 AR-1242-1

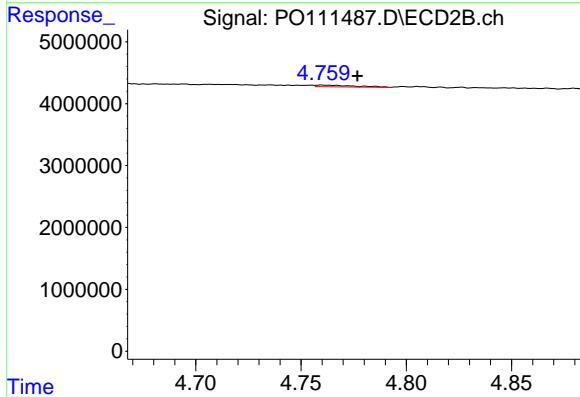
R.T.: 4.760 min
 Delta R.T.: 0.002 min
 Response: 334562
 Conc: 2.08 ng/ml



#17 AR-1242-2

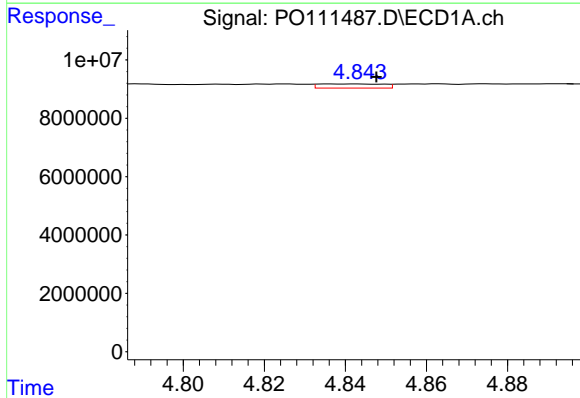
R.T.: 4.780 min
 Delta R.T.: -0.011 min
 Response: 2482317
 Conc: 9.13 ng/ml

Instrument :
 ECD_O
 ClientSampleId :
 I.BLK



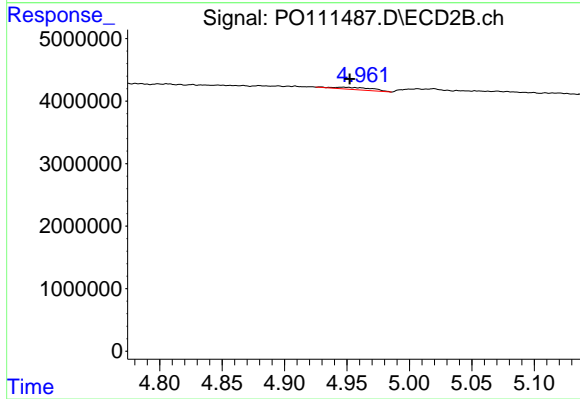
#17 AR-1242-2

R.T.: 4.760 min
 Delta R.T.: -0.017 min
 Response: 334562
 Conc: 1.43 ng/ml



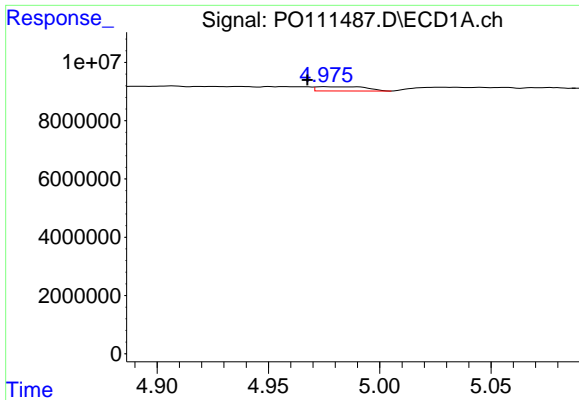
#18 AR-1242-3

R.T.: 4.843 min
 Delta R.T.: -0.005 min
 Response: 1593279
 Conc: 8.57 ng/ml



#18 AR-1242-3

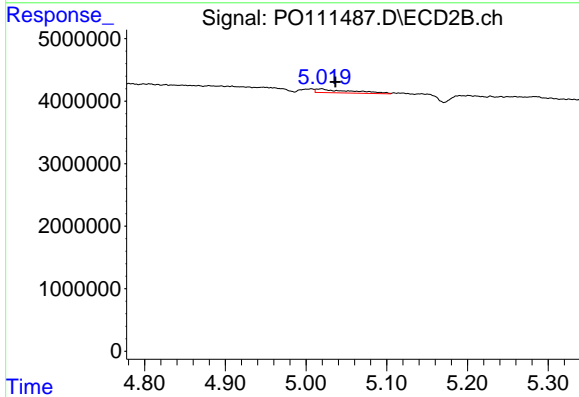
R.T.: 4.947 min
 Delta R.T.: -0.005 min
 Response: 775043
 Conc: 6.27 ng/ml



#19 AR-1242-4

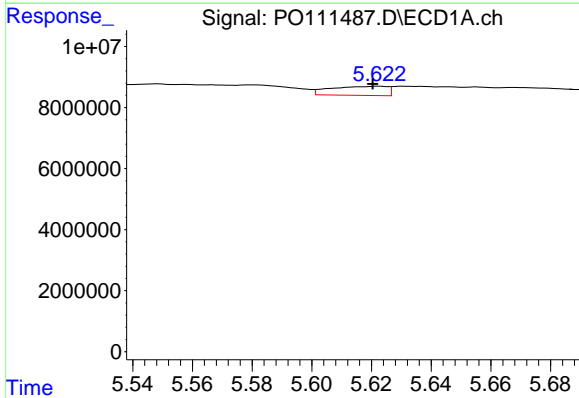
R.T.: 4.975 min
 Delta R.T.: 0.008 min
 Response: 2277402
 Conc: 15.41 ng/ml

Instrument :
 ECD_O
 ClientSampleId :
 I.BLK



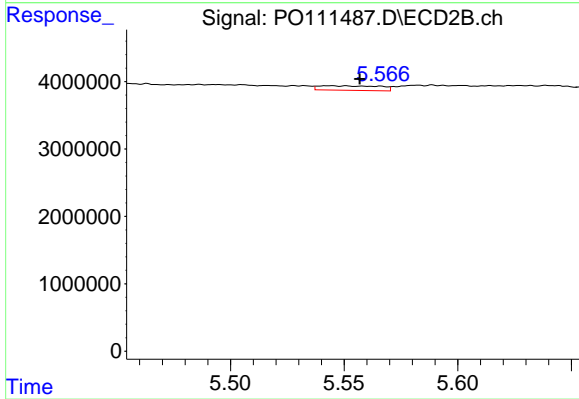
#19 AR-1242-4

R.T.: 5.019 min
 Delta R.T.: -0.017 min
 Response: 1833530
 Conc: 14.83 ng/ml



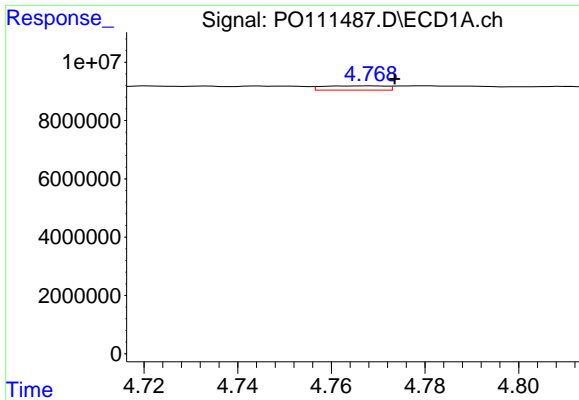
#20 AR-1242-5

R.T.: 5.622 min
 Delta R.T.: 0.002 min
 Response: 3923042
 Conc: 25.22 ng/ml



#20 AR-1242-5

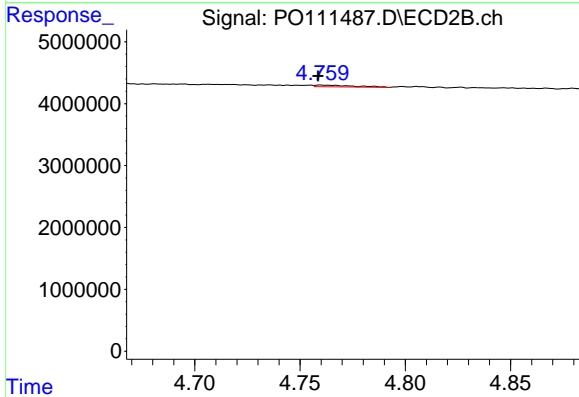
R.T.: 5.544 min
 Delta R.T.: -0.013 min
 Response: 1256518
 Conc: 8.27 ng/ml



#21 AR-1248-1

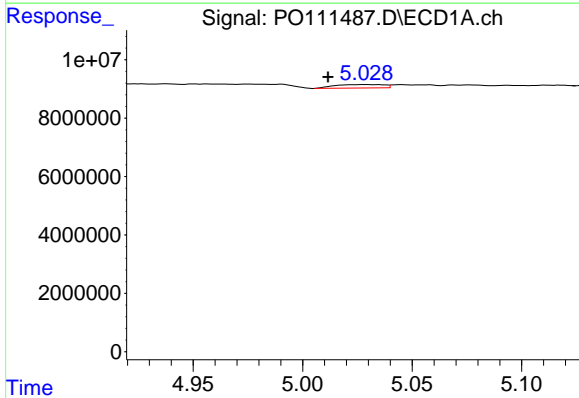
R.T.: 4.768 min
 Delta R.T.: -0.005 min
 Response: 1385831
 Conc: 9.05 ng/ml

Instrument :
 ECD_O
 ClientSampleId :
 I.BLK



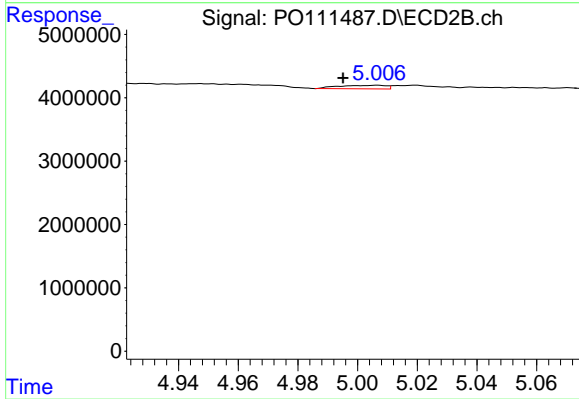
#21 AR-1248-1

R.T.: 4.760 min
 Delta R.T.: 0.001 min
 Response: 334562
 Conc: 2.58 ng/ml



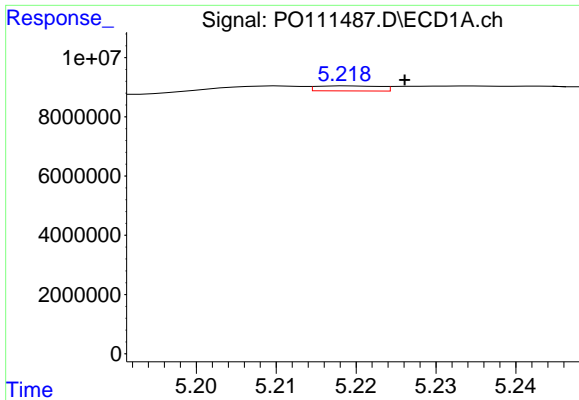
#22 AR-1248-2

R.T.: 5.029 min
 Delta R.T.: 0.017 min
 Response: 1860826
 Conc: 9.28 ng/ml



#22 AR-1248-2

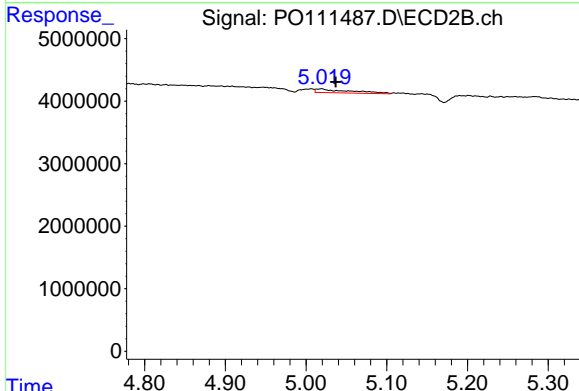
R.T.: 5.006 min
 Delta R.T.: 0.011 min
 Response: 619928
 Conc: 3.52 ng/ml



#23 AR-1248-3

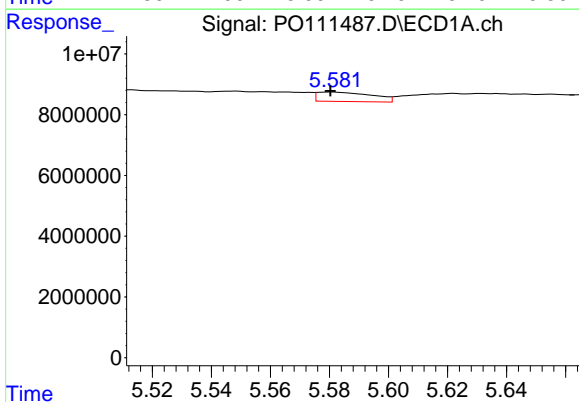
R.T.: 5.219 min
 Delta R.T.: -0.007 min
 Response: 943985
 Conc: 3.69 ng/ml

Instrument :
 ECD_O
 ClientSampleId :
 I.BLK



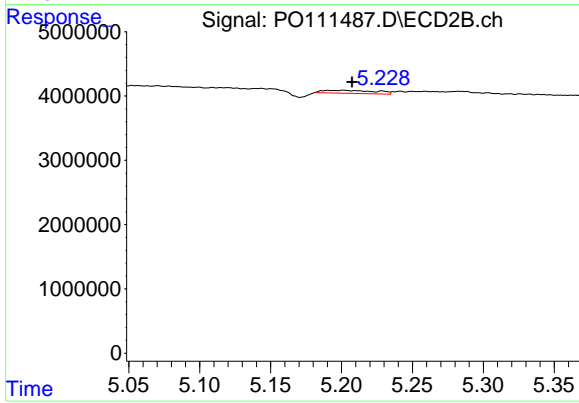
#23 AR-1248-3

R.T.: 5.019 min
 Delta R.T.: -0.018 min
 Response: 1833530
 Conc: 9.77 ng/ml



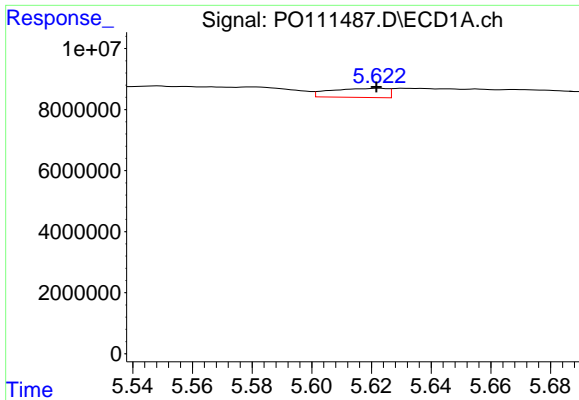
#24 AR-1248-4

R.T.: 5.581 min
 Delta R.T.: 0.000 min
 Response: 3966691
 Conc: 10.95 ng/ml



#24 AR-1248-4

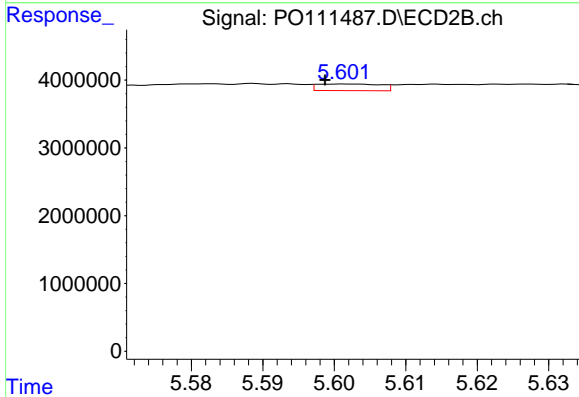
R.T.: 5.191 min
 Delta R.T.: -0.017 min
 Response: 1198289
 Conc: 5.45 ng/ml



#25 AR-1248-5

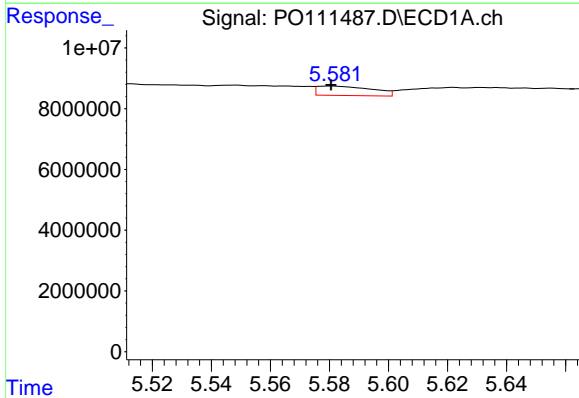
R.T.: 5.622 min
 Delta R.T.: 0.000 min
 Response: 3923042
 Conc: 14.97 ng/ml

Instrument :
 ECD_O
 ClientSampleId :
 I.BLK



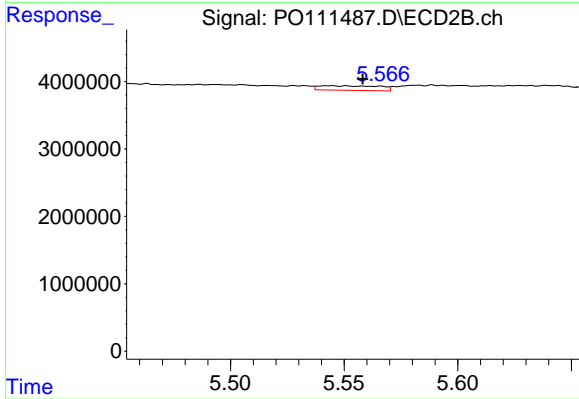
#25 AR-1248-5

R.T.: 5.602 min
 Delta R.T.: 0.003 min
 Response: 597930
 Conc: 2.74 ng/ml



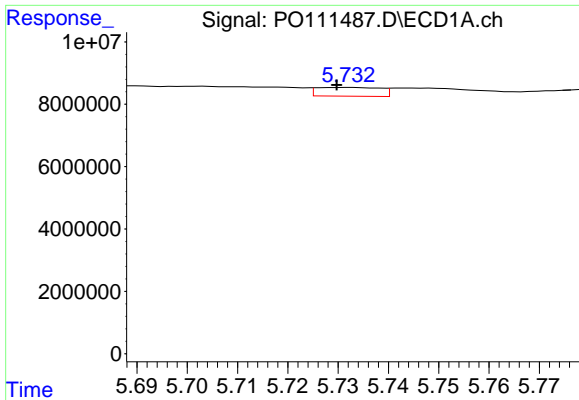
#26 AR-1254-1

R.T.: 5.581 min
 Delta R.T.: 0.000 min
 Response: 3966691
 Conc: 10.45 ng/ml



#26 AR-1254-1

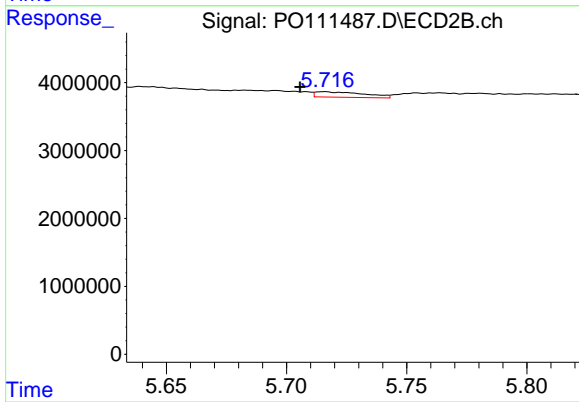
R.T.: 5.544 min
 Delta R.T.: -0.014 min
 Response: 1256518
 Conc: 3.88 ng/ml



#27 AR-1254-2

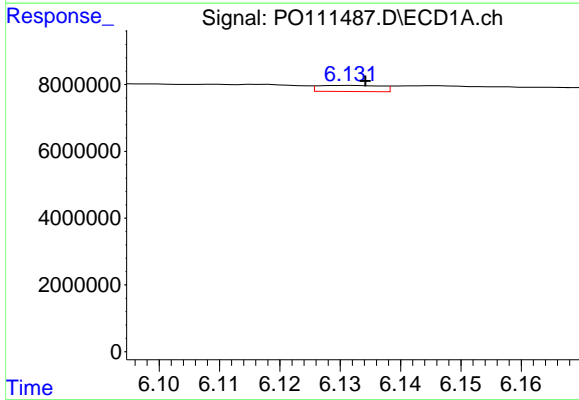
R.T.: 5.732 min
 Delta R.T.: 0.002 min
 Response: 2470995
 Conc: 7.56 ng/ml

Instrument :
 ECD_O
 ClientSampleId :
 I.BLK



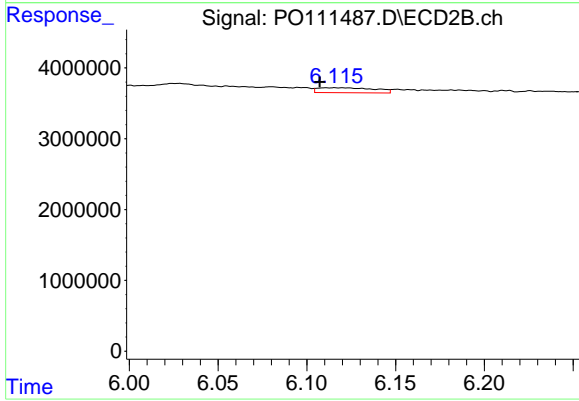
#27 AR-1254-2

R.T.: 5.716 min
 Delta R.T.: 0.010 min
 Response: 1124887
 Conc: 3.97 ng/ml



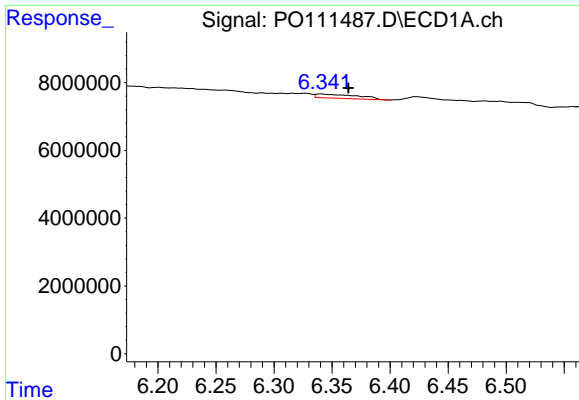
#28 AR-1254-3

R.T.: 6.132 min
 Delta R.T.: -0.003 min
 Response: 1321988
 Conc: 2.51 ng/ml



#28 AR-1254-3

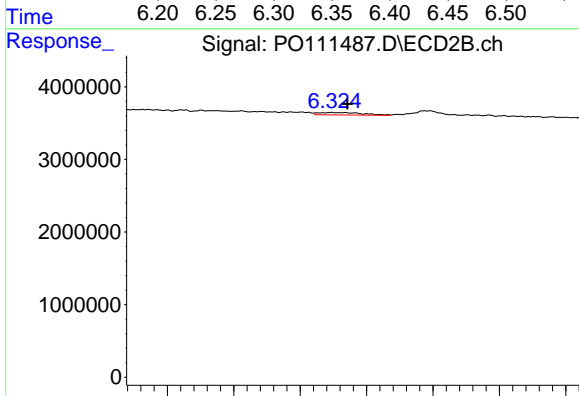
R.T.: 6.116 min
 Delta R.T.: 0.009 min
 Response: 1556393
 Conc: 3.61 ng/ml



#29 AR-1254-4

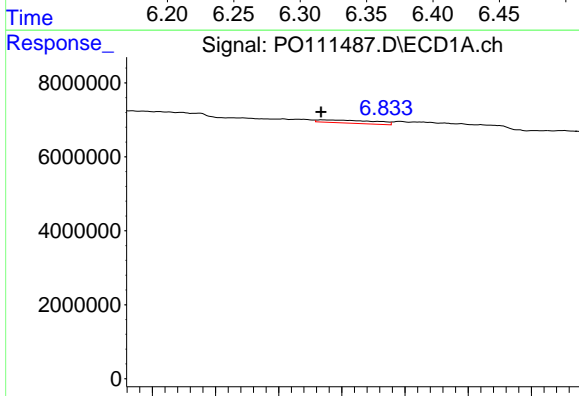
R.T.: 6.341 min
 Delta R.T.: -0.023 min
 Response: 2993167
 Conc: 8.91 ng/ml

Instrument :
 ECD_O
 ClientSampleId :
 I.BLK



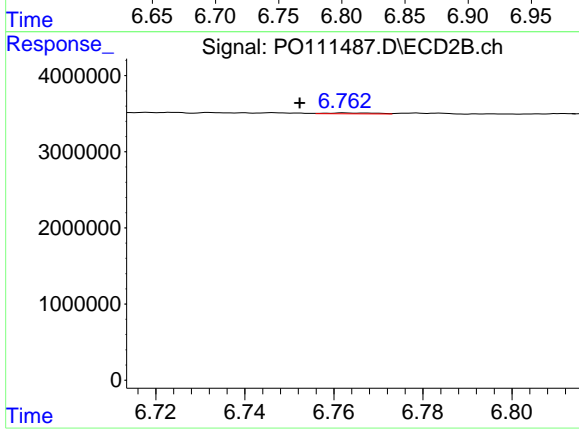
#29 AR-1254-4

R.T.: 6.324 min
 Delta R.T.: -0.011 min
 Response: 751785
 Conc: 3.04 ng/ml



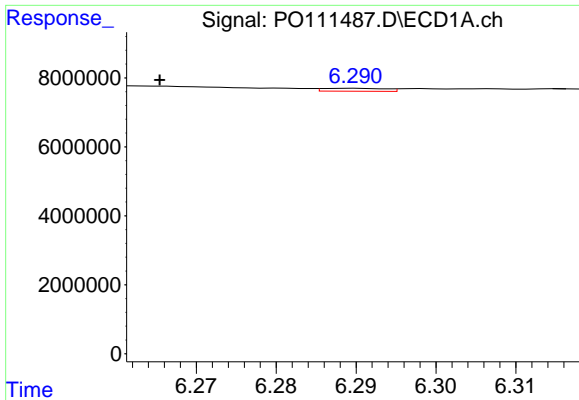
#30 AR-1254-5

R.T.: 6.785 min
 Delta R.T.: 0.001 min
 Response: 2492894
 Conc: 5.25 ng/ml



#30 AR-1254-5

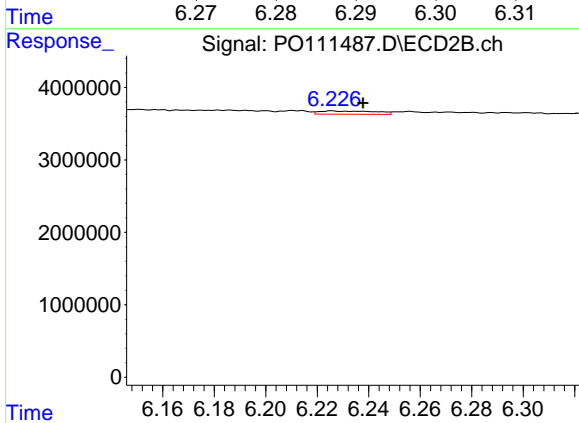
R.T.: 6.763 min
 Delta R.T.: 0.010 min
 Response: 90566
 Conc: 0.26 ng/ml



#31 AR-1260-1

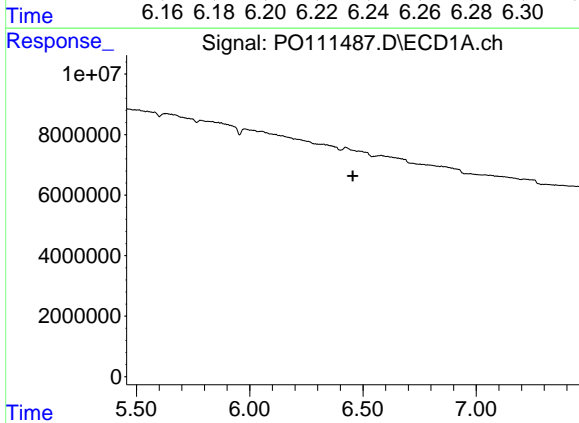
R.T.: 6.290 min
 Delta R.T.: 0.024 min
 Response: 473911
 Conc: 1.55 ng/ml

Instrument :
 ECD_O
 ClientSampleId :
 I.BLK



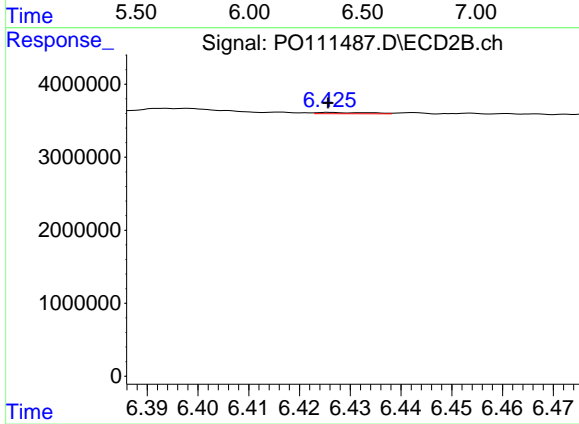
#31 AR-1260-1

R.T.: 6.226 min
 Delta R.T.: -0.012 min
 Response: 685446
 Conc: 2.74 ng/ml



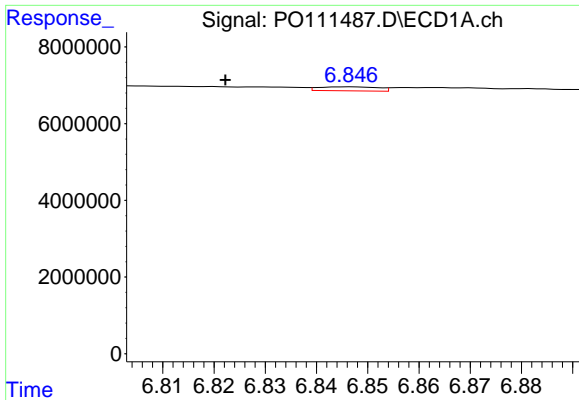
#32 AR-1260-2

R.T.: 6.482 min
 Delta R.T.: 0.026 min
 Response: -380224
 Conc: N.D.



#32 AR-1260-2

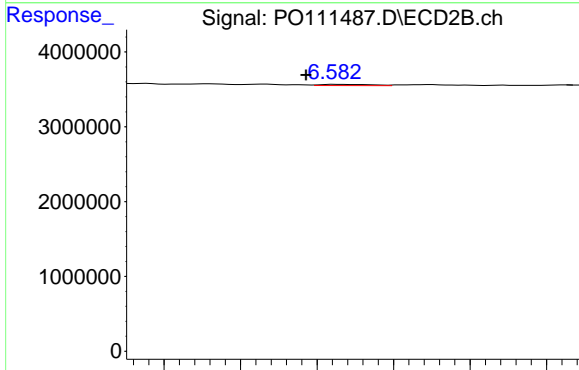
R.T.: 6.426 min
 Delta R.T.: 0.000 min
 Response: 130413
 Conc: 0.44 ng/ml



#33 AR-1260-3

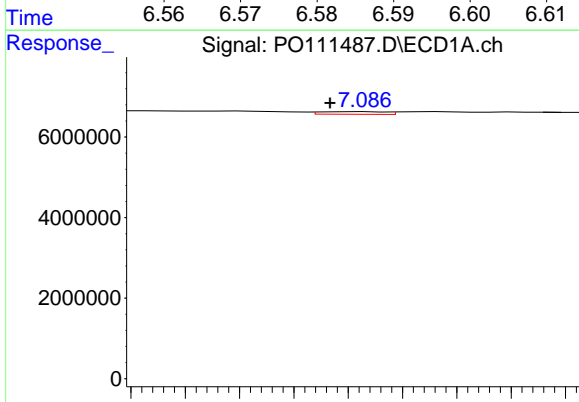
R.T.: 6.846 min
 Delta R.T.: 0.024 min
 Response: 831896
 Conc: 2.39 ng/ml

Instrument :
 ECD_O
 ClientSampleId :
 I.BLK



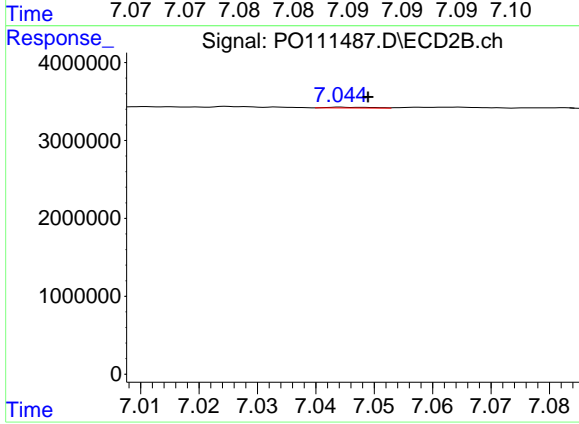
#33 AR-1260-3

R.T.: 6.583 min
 Delta R.T.: 0.005 min
 Response: 74592
 Conc: 0.26 ng/ml



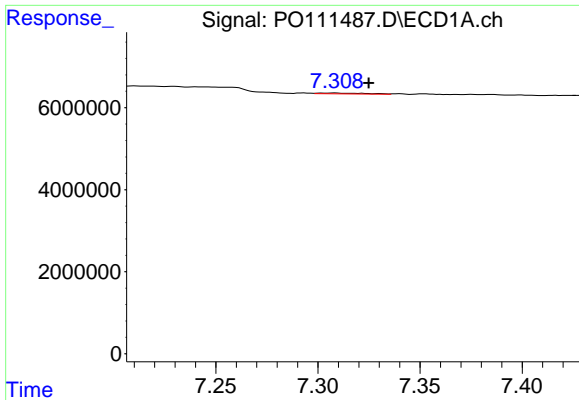
#34 AR-1260-4

R.T.: 7.086 min
 Delta R.T.: 0.003 min
 Response: 266135
 Conc: 0.95 ng/ml



#34 AR-1260-4

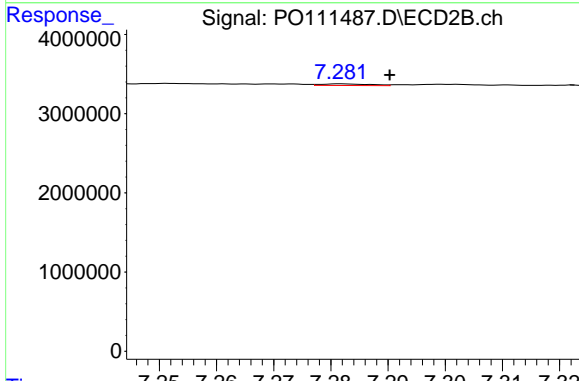
R.T.: 7.045 min
 Delta R.T.: -0.004 min
 Response: 49361
 Conc: 0.25 ng/ml



#35 AR-1260-5

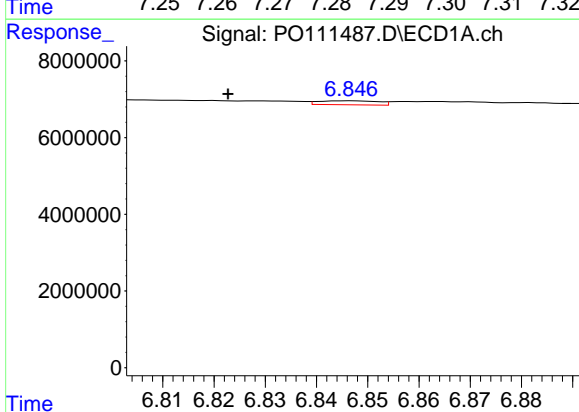
R.T.: 7.308 min
 Delta R.T.: -0.016 min
 Response: 303316
 Conc: 0.42 ng/ml

Instrument :
 ECD_O
 ClientSampleId :
 I.BLK



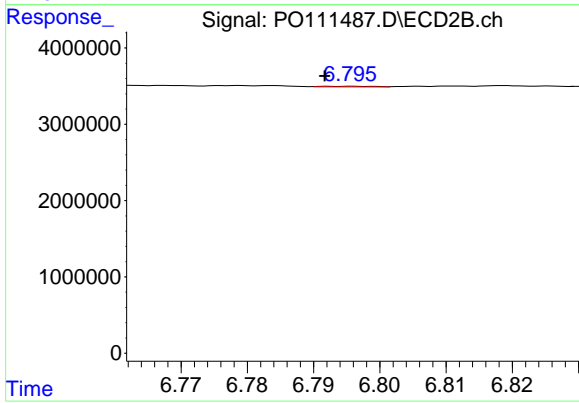
#35 AR-1260-5

R.T.: 7.282 min
 Delta R.T.: -0.008 min
 Response: 120896
 Conc: 0.26 ng/ml



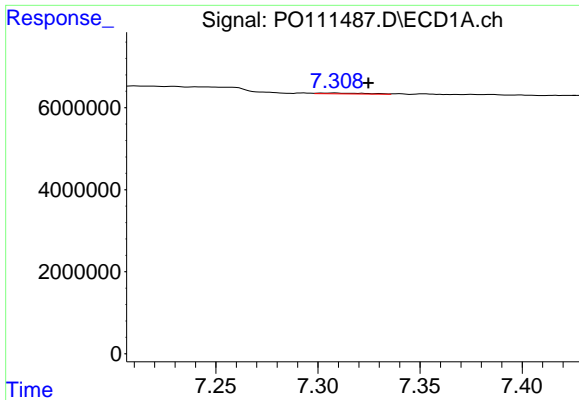
#36 AR-1262-1

R.T.: 6.846 min
 Delta R.T.: 0.024 min
 Response: 831896
 Conc: 1.71 ng/ml



#36 AR-1262-1

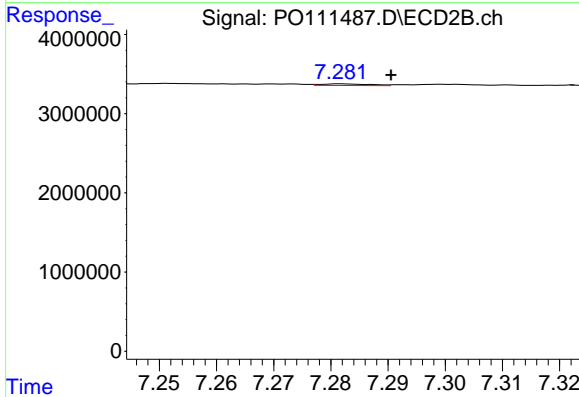
R.T.: 6.795 min
 Delta R.T.: 0.003 min
 Response: 46111
 Conc: 0.14 ng/ml



#37 AR-1262-2

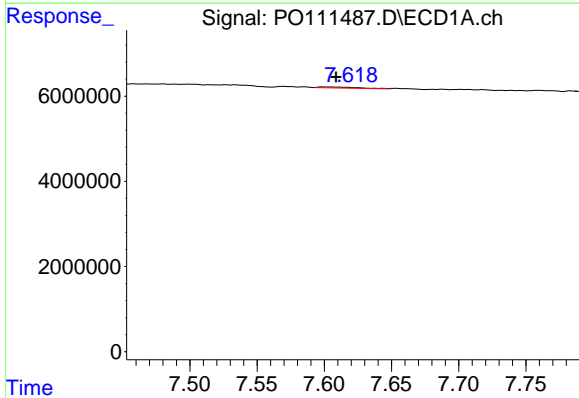
R.T.: 7.308 min
 Delta R.T.: -0.016 min
 Response: 303316
 Conc: 0.38 ng/ml

Instrument :
 ECD_O
 ClientSampleId :
 I.BLK



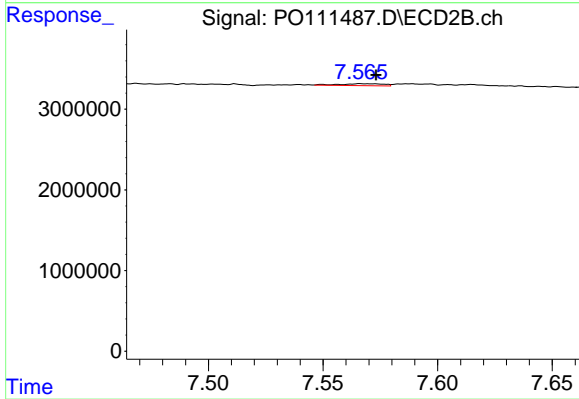
#37 AR-1262-2

R.T.: 7.282 min
 Delta R.T.: -0.009 min
 Response: 120896
 Conc: 0.24 ng/ml



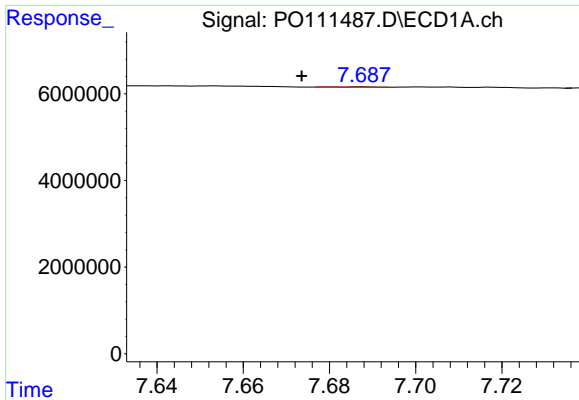
#38 AR-1262-3

R.T.: 7.599 min
 Delta R.T.: -0.009 min
 Response: 463214
 Conc: 1.37 ng/ml



#38 AR-1262-3

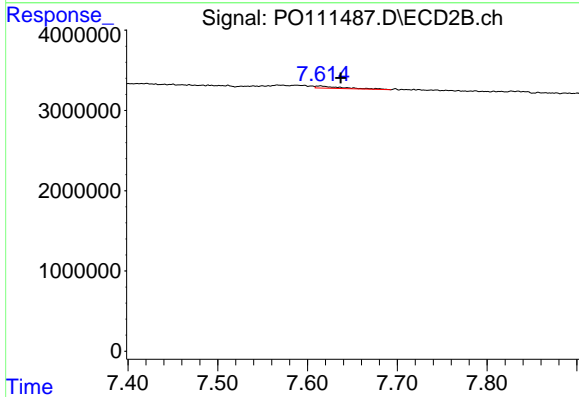
R.T.: 7.567 min
 Delta R.T.: -0.006 min
 Response: 333789
 Conc: 1.78 ng/ml



#39 AR-1262-4

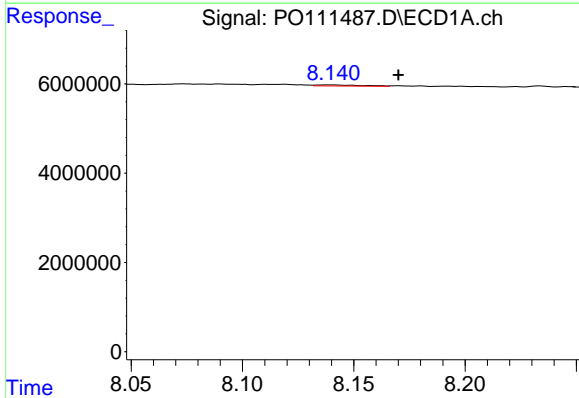
R.T.: 7.688 min
 Delta R.T.: 0.014 min
 Response: 74993
 Conc: 0.13 ng/ml

Instrument :
 ECD_O
 ClientSampleId :
 I.BLK



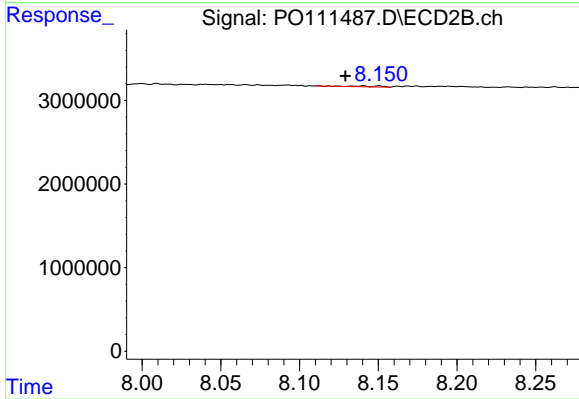
#39 AR-1262-4

R.T.: 7.614 min
 Delta R.T.: -0.023 min
 Response: 594119
 Conc: 1.80 ng/ml



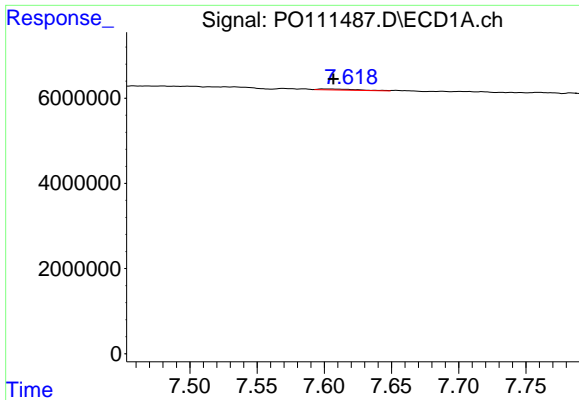
#40 AR-1262-5

R.T.: 8.140 min
 Delta R.T.: -0.030 min
 Response: 365030
 Conc: 1.28 ng/ml



#40 AR-1262-5

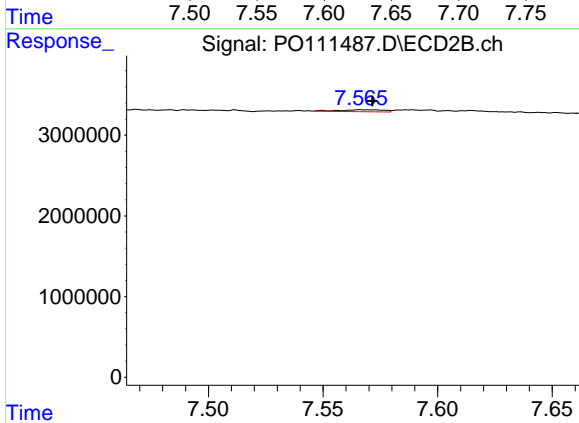
R.T.: 8.141 min
 Delta R.T.: 0.011 min
 Response: 128529
 Conc: 1.14 ng/ml



#41 AR-1268-1

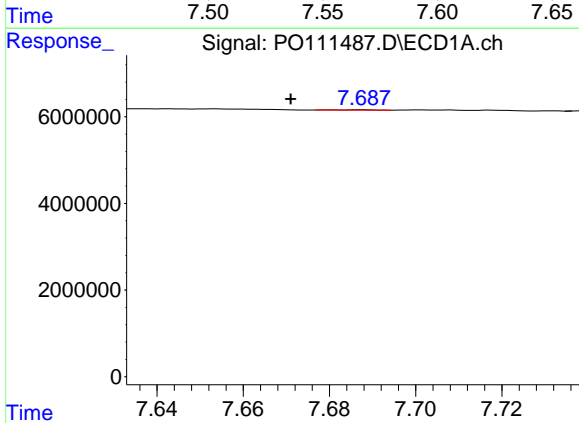
R.T.: 7.599 min
 Delta R.T.: -0.007 min
 Response: 463214
 Conc: 0.48 ng/ml

Instrument :
 ECD_O
 ClientSampleId :
 I.BLK



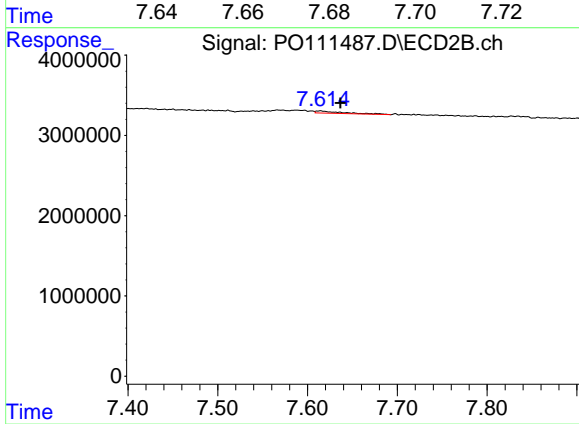
#41 AR-1268-1

R.T.: 7.567 min
 Delta R.T.: -0.005 min
 Response: 333789
 Conc: 0.63 ng/ml



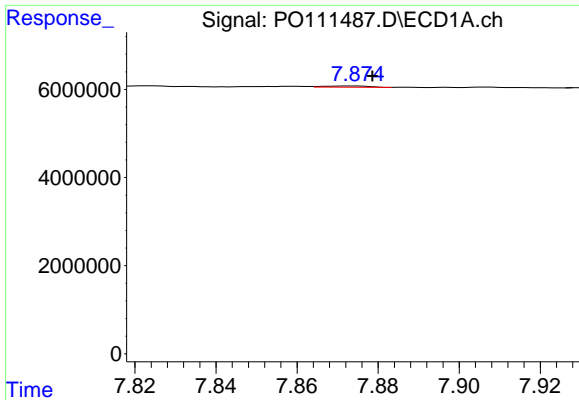
#42 AR-1268-2

R.T.: 7.688 min
 Delta R.T.: 0.017 min
 Response: 74993
 Conc: 0.08 ng/ml



#42 AR-1268-2

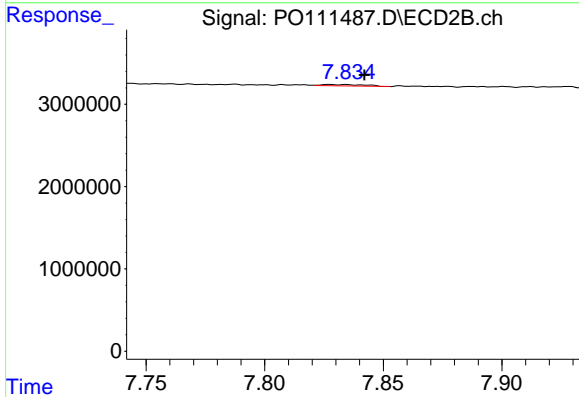
R.T.: 7.614 min
 Delta R.T.: -0.022 min
 Response: 594119
 Conc: 1.23 ng/ml



#43 AR-1268-3

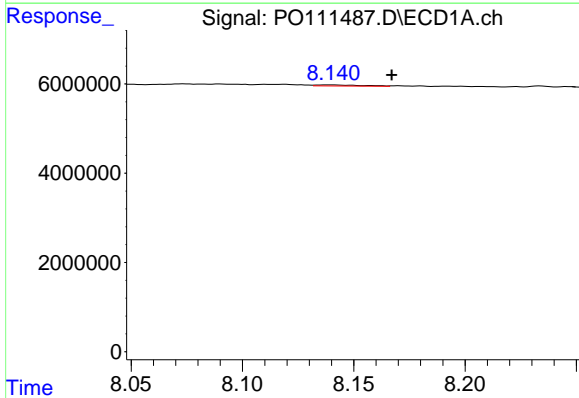
R.T.: 7.874 min
 Delta R.T.: -0.004 min
 Response: 228901
 Conc: 0.30 ng/ml

Instrument :
 ECD_O
 ClientSampleId :
 I.BLK



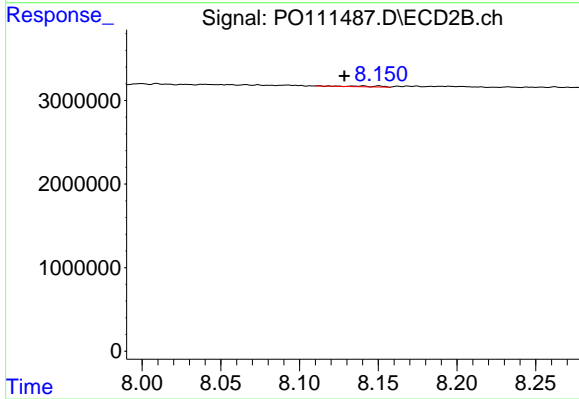
#43 AR-1268-3

R.T.: 7.827 min
 Delta R.T.: -0.015 min
 Response: 198027
 Conc: 0.57 ng/ml



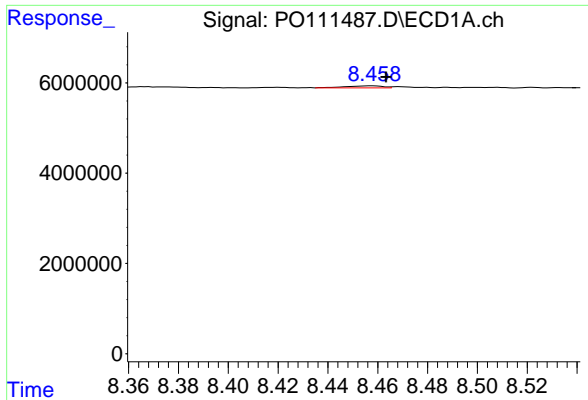
#44 AR-1268-4

R.T.: 8.140 min
 Delta R.T.: -0.027 min
 Response: 365030
 Conc: 1.12 ng/ml



#44 AR-1268-4

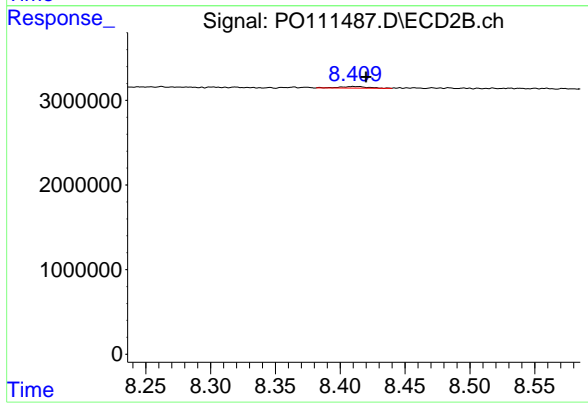
R.T.: 8.141 min
 Delta R.T.: 0.012 min
 Response: 128529
 Conc: 1.01 ng/ml



#45 AR-1268-5

R.T.: 8.458 min
Delta R.T.: -0.005 min
Response: 478105
Conc: 0.22 ng/ml

Instrument :
ECD_O
ClientSampleId :
I.BLK



#45 AR-1268-5

R.T.: 8.411 min
Delta R.T.: -0.009 min
Response: 298168
Conc: 0.40 ng/ml