

Data Path : Z:\pestpcbsrv\HPCHEM1\ECD_O\Data\P0060623\
 Data File : P0095511.D
 Signal(s) : Signal #1: ECD1A.ch Signal #2: ECD2B.ch
 Acq On : 06 Jun 2023 11:25
 Operator : YP/AJ
 Sample : AR1242CCC500
 Misc :
 ALS Vial : 4 Sample Multiplier: 1

Instrument :
 ECD_O
 ClientSampleId :

Integration File signal 1: autoint1.e
 Integration File signal 2: autoint2.e
 Quant Time: Jun 06 20:56:24 2023
 Quant Method : Z:\pestpcbsrv\HPCHEM1\ECD_O\methods\P0060123.M
 Quant Title : GC EXTRACTABLES
 QLast Update : Fri Jun 02 06:53:15 2023
 Response via : Initial Calibration
 Integrator: ChemStation

Volume Inj. : 2 µl
 Signal #1 Phase : ZB-MR1 Signal #2 Phase: ZB-MR2
 Signal #1 Info : 30Mx0.32mmx 0.50µ Signal #2 Info : 30M x 0.32mm x 0.25µm

Compound	RT#1	RT#2	Resp#1	Resp#2	ng/ml	ng/ml
System Monitoring Compounds						
1) SA Tetrachlo...	4.443	3.656	162.4E6	74560954	44.072	47.536
2) SA Decachlor...	10.298	8.718	111.5E6	56037590	41.209	43.316
Target Compounds						
3) L1 AR-1016-1	5.626	4.752	38861995	18996671	320.652	326.250
4) L1 AR-1016-2	5.649	4.771	53839867	25010290	320.434	326.185
5) L1 AR-1016-3	5.711	4.948	34441514	13858584	327.472	333.832
6) L1 AR-1016-4	5.811	4.991	27272417	12523731	327.351	355.198
7) L1 AR-1016-5	6.109	5.206	29120527	16146516	352.044	362.933
8) L2 AR-1221-1	4.648	3.871	4427851	2053914	96.138	100.668
9) L2 AR-1221-2	4.741	3.958	6865714	3130321	199.839	201.641
10) L2 AR-1221-3	4.818	4.035	23396993	11007884	230.422	237.029
11) L3 AR-1232-1	4.818	4.035	23396993	11007884	318.987	327.734
12) L3 AR-1232-2	5.355	4.771	30536447	25010290	743.174	738.957
13) L3 AR-1232-3	5.649	4.948	53839867	13858584	728.465	743.296
14) L3 AR-1232-4	5.811	5.033	27272417	15141364	736.391	851.049
15) L3 AR-1232-5	5.903	5.206	26300714	16146516	857.044	820.183
16) L4 AR-1242-1	5.626	4.752	38861995	18996671	419.884	425.837
17) L4 AR-1242-2	5.649	4.771	53839867	25010290	422.422	430.470
18) L4 AR-1242-3	5.711	4.948	34441514	13858584	423.221	440.099
19) L4 AR-1242-4	5.811	5.033	27272417	15141364	423.076	448.873
20) L4 AR-1242-5	6.555	5.560	26854697	18147120	388.992	423.242
21) L5 AR-1248-1	5.626	4.752	38861995	18996671	524.497	539.722
22) L5 AR-1248-2	5.903	4.991	26300714	12523731	245.850	250.813
23) L5 AR-1248-3	6.109	5.033	29120527	15141364	254.216	289.092
24) L5 AR-1248-4	6.516	5.206	26120650	16146516	210.575	264.719 #
25) L5 AR-1248-5	6.555	5.601	26854697	13894021	220.377	233.465
26) L6 AR-1254-1	6.489	5.560	21789209	18147120	170.855	206.206
27) L6 AR-1254-2	6.714	5.710	25534392	6026361	134.579	75.600 #
28) L6 AR-1254-3	7.080	6.117	13109827	7670765	69.099	62.758
29) L6 AR-1254-4	7.368	6.347	8373154	5287863	59.141	70.067
30) L6 AR-1254-5	7.790	6.768	4143031	3080575	26.136	27.533
31) L7 AR-1260-1	7.246	6.261	2337062	4188340	15.762	49.095 #
32) L7 AR-1260-2	7.505	6.437	3229473	1545275	18.399	15.123
33) L7 AR-1260-3	7.850	6.591	322937	1527310	2.877	16.312 #
34) L7 AR-1260-4	8.079	7.068	1759806	168679	12.915	2.480 #
35) L7 AR-1260-5	8.422	7.311	592832	347118	2.329	2.201
36) L8 AR-1262-1	7.850	6.858	322937	159044	1.750	3.435 #
37) L8 AR-1262-2	8.422	7.068	592832	168679	1.857	1.729
38) L8 AR-1262-3	8.721	7.658f	-44727	353246	N.D.	4.608 #
39) L8 AR-1262-4	8.839	7.658	55264	353246	0.469	2.570 #
40) L8 AR-1262-5	9.492	8.211f	230128	164652	1.918	2.589 #
41) L9 AR-1268-1	8.721	7.658f	-44727	353246	N.D.	1.634 #

Data Path : Z:\pestpcbsrv\HPCHEM1\ECD_0\Data\P0060623\
 Data File : P0095511.D
 Signal(s) : Signal #1: ECD1A.ch Signal #2: ECD2B.ch
 Acq On : 06 Jun 2023 11:25
 Operator : YP/AJ
 Sample : AR1242CCC500
 Misc :
 ALS Vial : 4 Sample Multiplier: 1

Instrument :
 ECD_0
 ClientSampleId :

Integration File signal 1: autoint1.e
 Integration File signal 2: autoint2.e
 Quant Time: Jun 06 20:56:24 2023
 Quant Method : Z:\pestpcbsrv\HPCHEM1\ECD_0\methods\P0060123.M
 Quant Title : GC EXTRACTABLES
 QLast Update : Fri Jun 02 06:53:15 2023
 Response via : Initial Calibration
 Integrator: ChemStation

Volume Inj. : 2 µl
 Signal #1 Phase : ZB-MR1 Signal #2 Phase: ZB-MR2
 Signal #1 Info : 30Mx0.32mmx 0.50µ Signal #2 Info : 30M x 0.32mm x 0.25µm

	Compound	RT#1	RT#2	Resp#1	Resp#2	ng/ml	ng/ml
42)	L9 AR-1268-2	8.839	7.658	55264	353246	0.163	1.851 #
43)	L9 AR-1268-3	9.060	7.872	345308	146966	1.194	0.907
44)	L9 AR-1268-4	9.492	8.211f	230128	164652	1.810	2.393 #
45)	L9 AR-1268-5	9.936	8.455	775929	286450	0.825	0.597 #

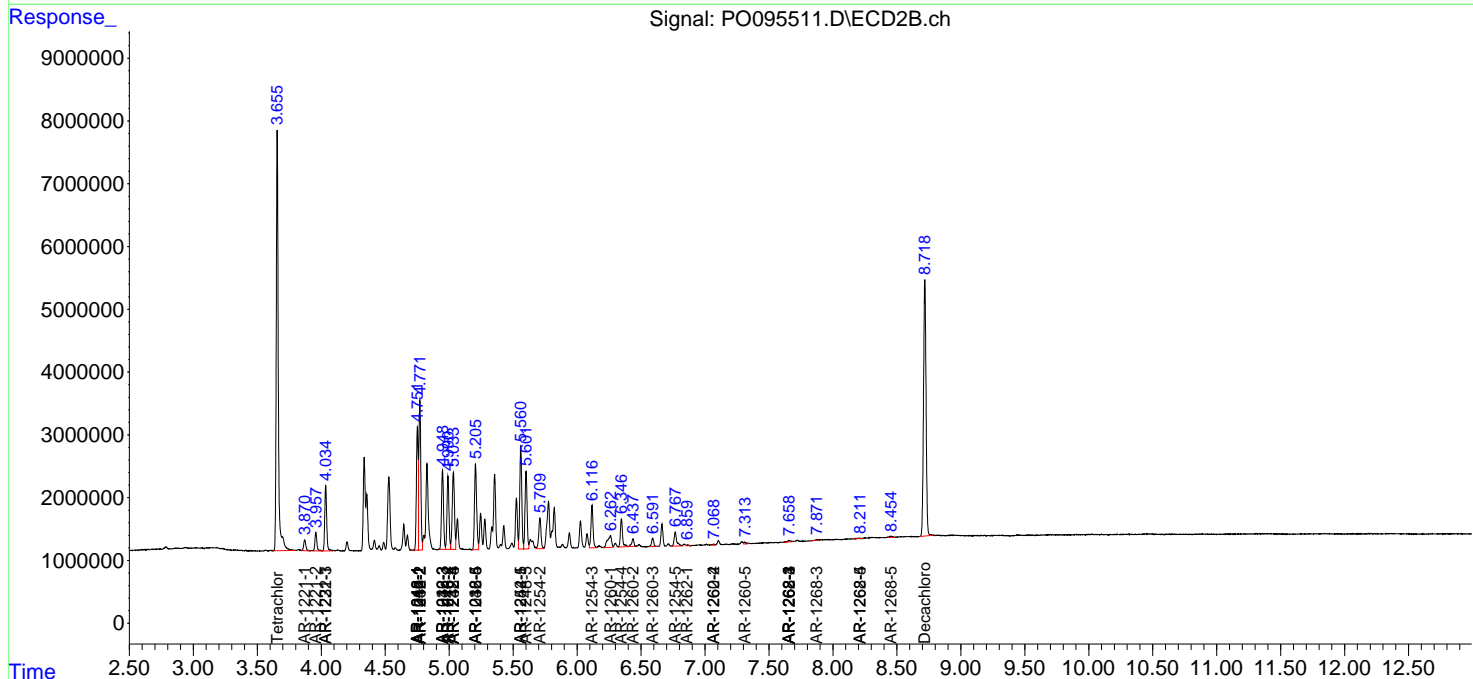
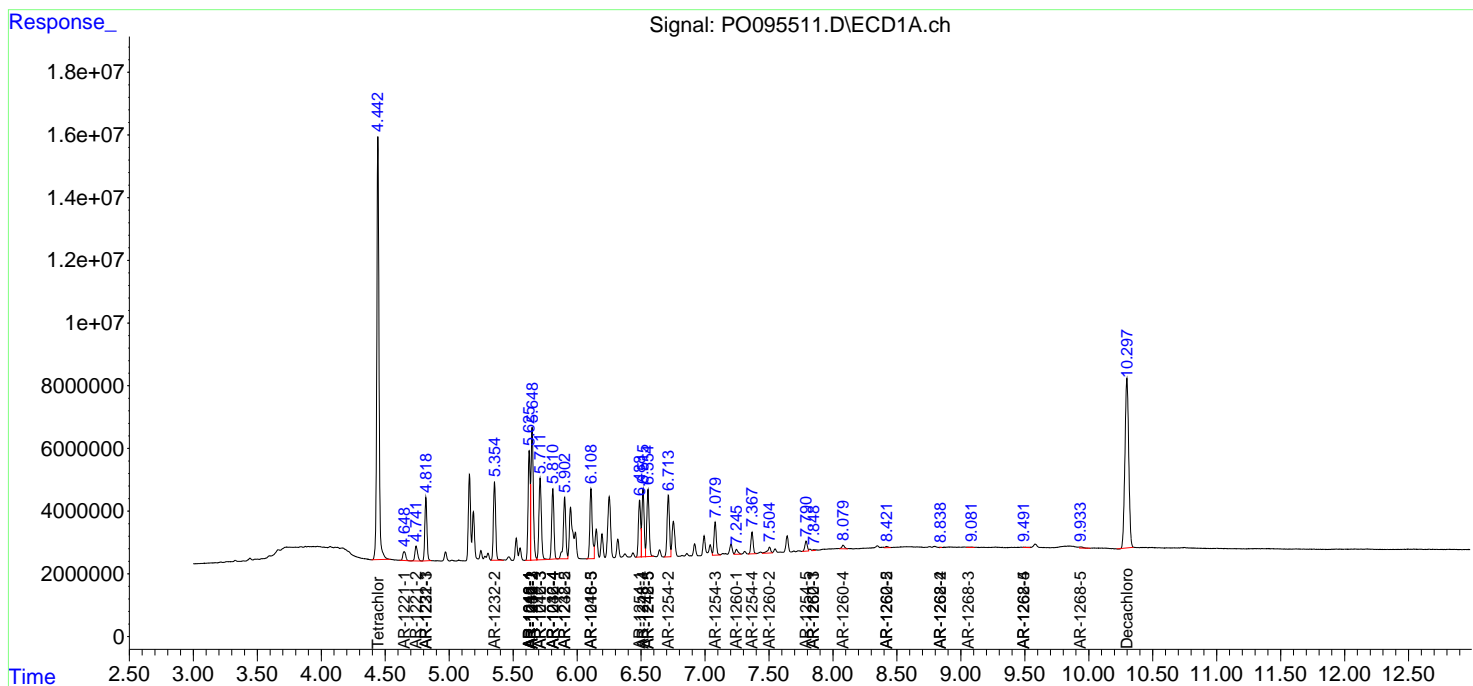
(f)=RT Delta > 1/2 Window (#)=Amounts differ by > 25% (m)=manual int.

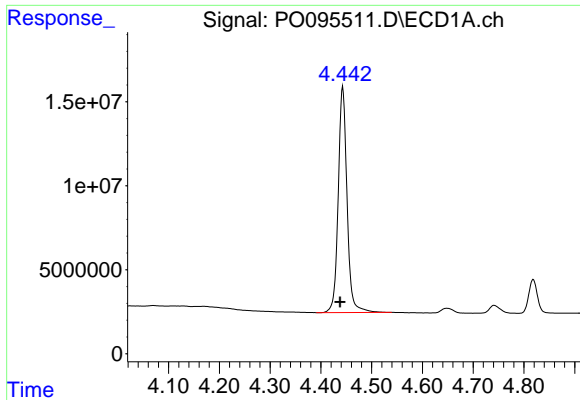
Data Path : Z:\pestpcbsrv\HPCHEM1\ECD_O\Data\P0060623\
 Data File : P0095511.D
 Signal(s) : Signal #1: ECD1A.ch Signal #2: ECD2B.ch
 Acq On : 06 Jun 2023 11:25
 Operator : YP/AJ
 Sample : AR1242CCC500
 Misc :
 ALS Vial : 4 Sample Multiplier: 1

Instrument :
 ECD_O
 ClientSampleId :

Integration File signal 1: autoint1.e
 Integration File signal 2: autoint2.e
 Quant Time: Jun 06 20:56:24 2023
 Quant Method : Z:\pestpcbsrv\HPCHEM1\ECD_O\methods\P0060123.M
 Quant Title : GC EXTRACTABLES
 QLast Update : Fri Jun 02 06:53:15 2023
 Response via : Initial Calibration
 Integrator: ChemStation

Volume Inj. : 2 µl
 Signal #1 Phase : ZB-MR1 Signal #2 Phase: ZB-MR2
 Signal #1 Info : 30Mx0.32mmx 0.50µ Signal #2 Info : 30M x 0.32mm x 0.25µm

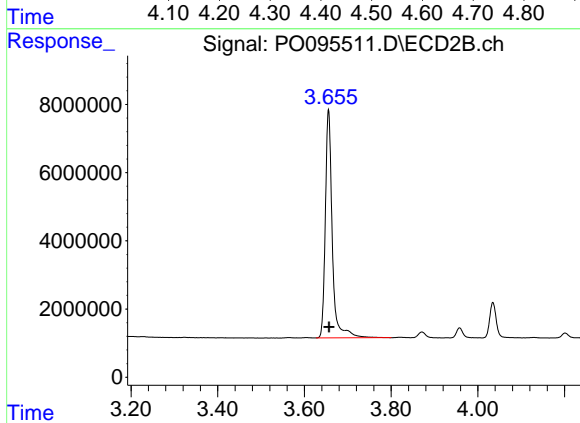




#1 Tetrachloro-m-xylene

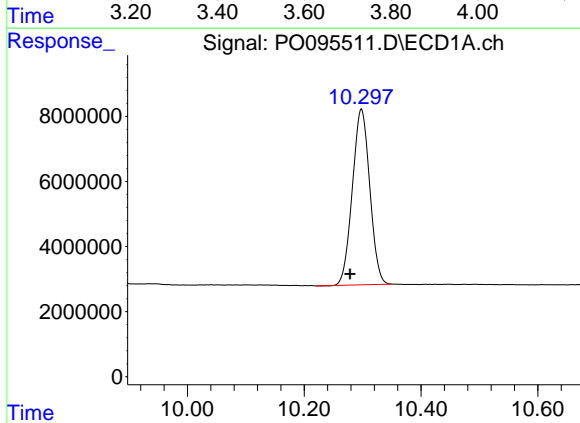
R.T.: 4.443 min
 Delta R.T.: 0.005 min
 Response: 162428897
 Conc: 44.07 ng/ml

Instrument :
 ECD_O
 ClientSampleId :



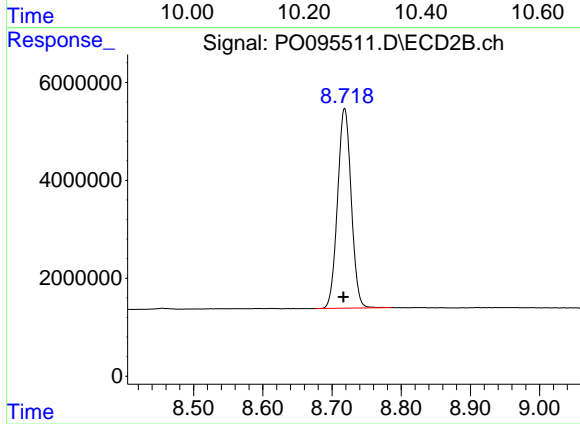
#1 Tetrachloro-m-xylene

R.T.: 3.656 min
 Delta R.T.: 0.000 min
 Response: 74560954
 Conc: 47.54 ng/ml



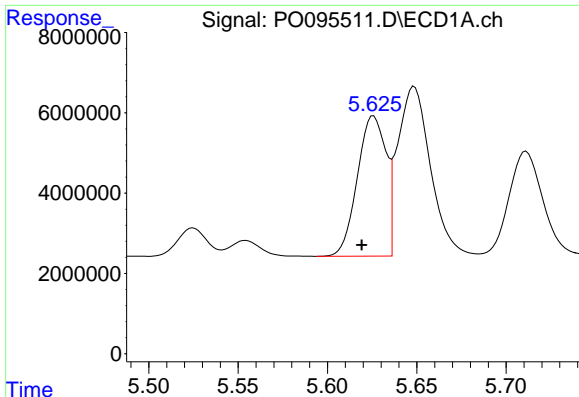
#2 Decachlorobiphenyl

R.T.: 10.298 min
 Delta R.T.: 0.020 min
 Response: 111531977
 Conc: 41.21 ng/ml



#2 Decachlorobiphenyl

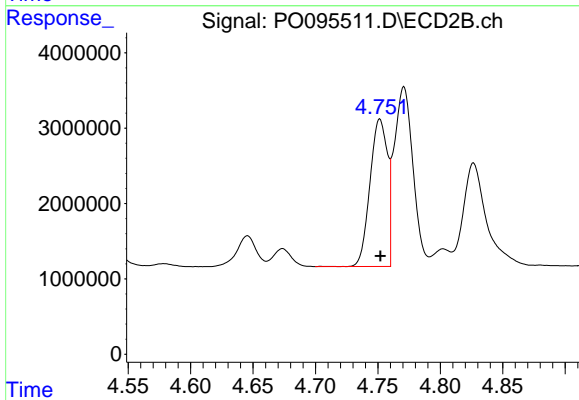
R.T.: 8.718 min
 Delta R.T.: 0.002 min
 Response: 56037590
 Conc: 43.32 ng/ml



#3 AR-1016-1

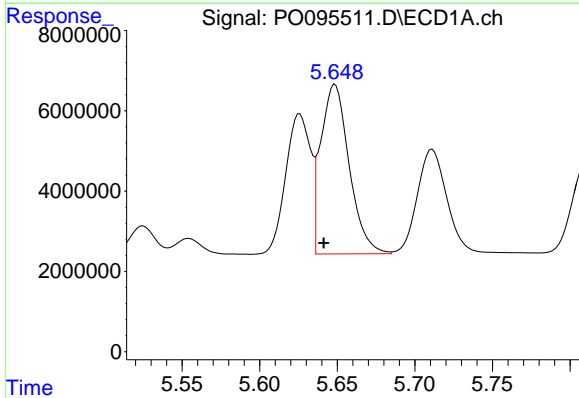
R.T.: 5.626 min
 Delta R.T.: 0.007 min
 Response: 38861995
 Conc: 320.65 ng/ml

Instrument :
 ECD_O
 ClientSampleId :



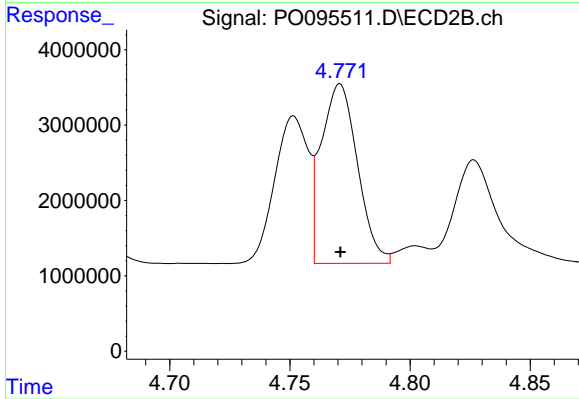
#3 AR-1016-1

R.T.: 4.752 min
 Delta R.T.: 0.000 min
 Response: 18996671
 Conc: 326.25 ng/ml



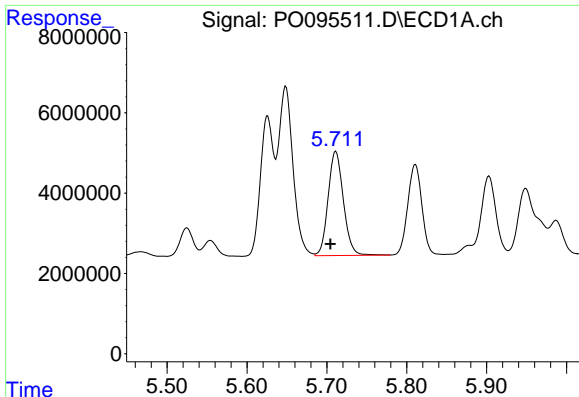
#4 AR-1016-2

R.T.: 5.649 min
 Delta R.T.: 0.007 min
 Response: 53839867
 Conc: 320.43 ng/ml



#4 AR-1016-2

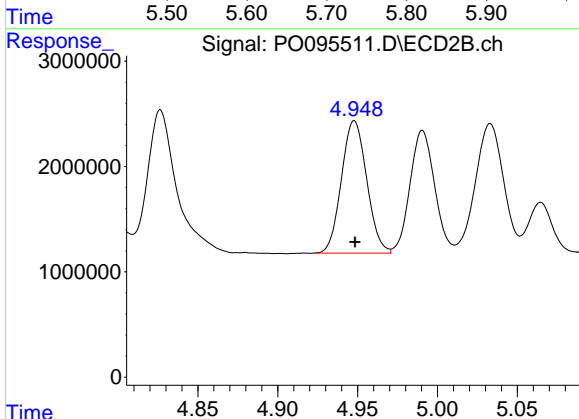
R.T.: 4.771 min
 Delta R.T.: 0.000 min
 Response: 25010290
 Conc: 326.19 ng/ml



#5 AR-1016-3

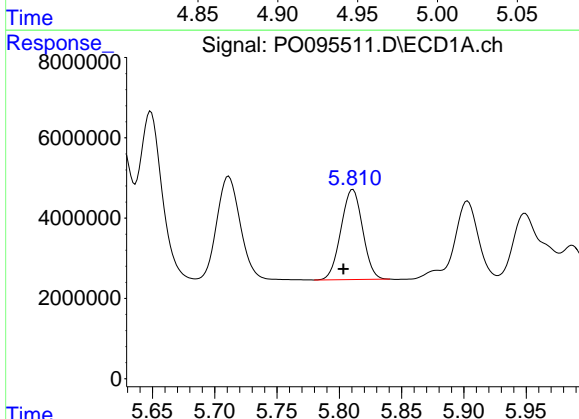
R.T.: 5.711 min
 Delta R.T.: 0.007 min
 Response: 34441514
 Conc: 327.47 ng/ml

Instrument :
 ECD_O
 ClientSampleId :



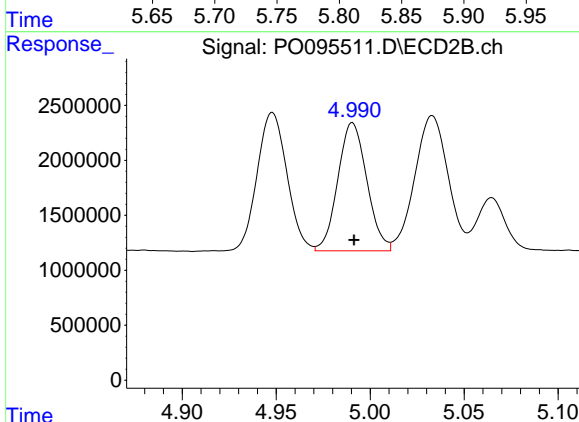
#5 AR-1016-3

R.T.: 4.948 min
 Delta R.T.: 0.000 min
 Response: 13858584
 Conc: 333.83 ng/ml



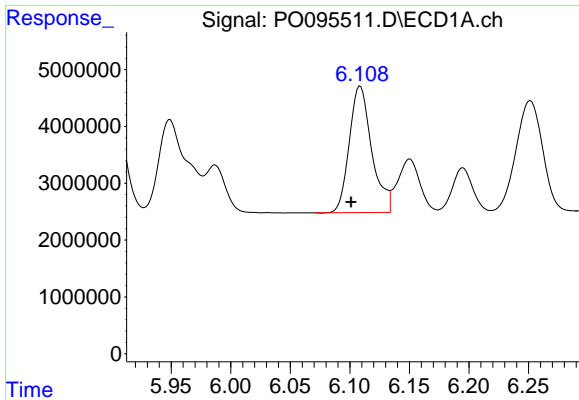
#6 AR-1016-4

R.T.: 5.811 min
 Delta R.T.: 0.008 min
 Response: 27272417
 Conc: 327.35 ng/ml



#6 AR-1016-4

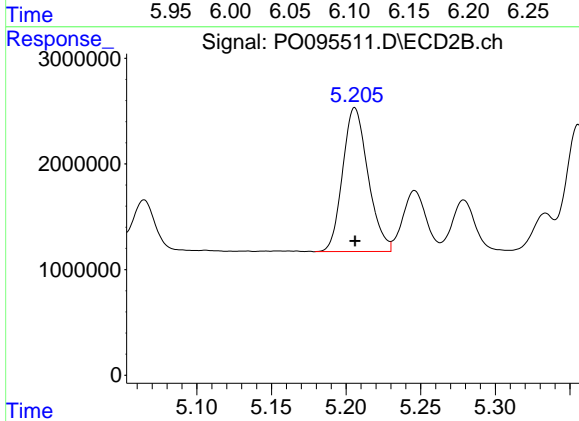
R.T.: 4.991 min
 Delta R.T.: 0.000 min
 Response: 12523731
 Conc: 355.20 ng/ml



#7 AR-1016-5

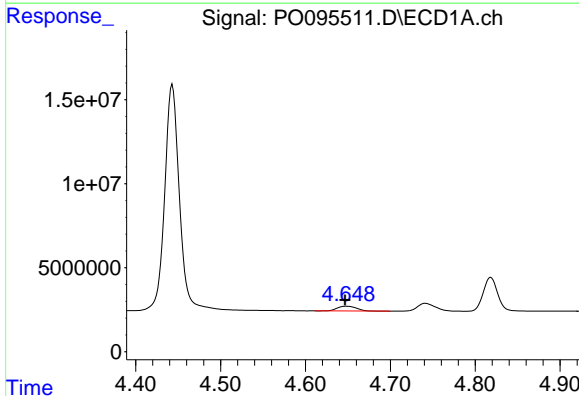
R.T.: 6.109 min
 Delta R.T.: 0.008 min
 Response: 29120527
 Conc: 352.04 ng/ml

Instrument :
 ECD_O
 ClientSampleId :



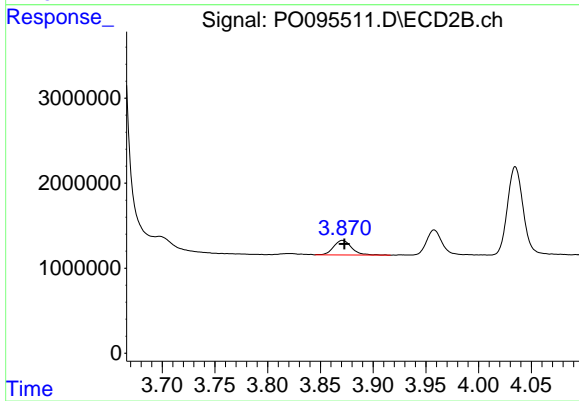
#7 AR-1016-5

R.T.: 5.206 min
 Delta R.T.: 0.000 min
 Response: 16146516
 Conc: 362.93 ng/ml



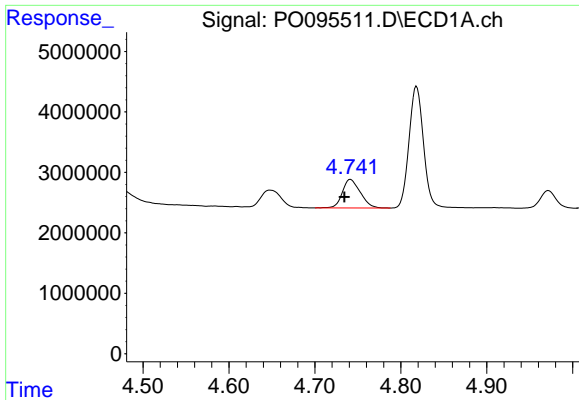
#8 AR-1221-1

R.T.: 4.648 min
 Delta R.T.: 0.001 min
 Response: 4427851
 Conc: 96.14 ng/ml



#8 AR-1221-1

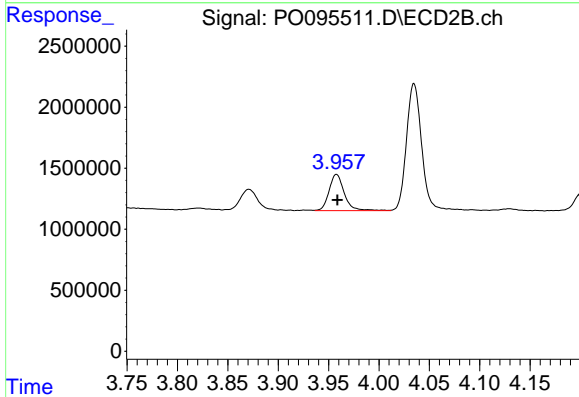
R.T.: 3.871 min
 Delta R.T.: -0.002 min
 Response: 2053914
 Conc: 100.67 ng/ml



#9 AR-1221-2

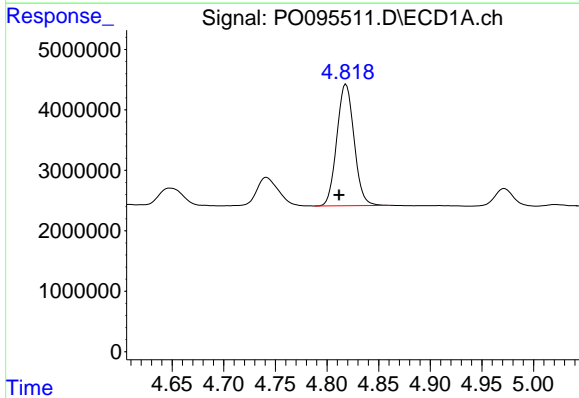
R.T.: 4.741 min
 Delta R.T.: 0.007 min
 Response: 6865714
 Conc: 199.84 ng/ml

Instrument :
 ECD_O
 ClientSampleId :



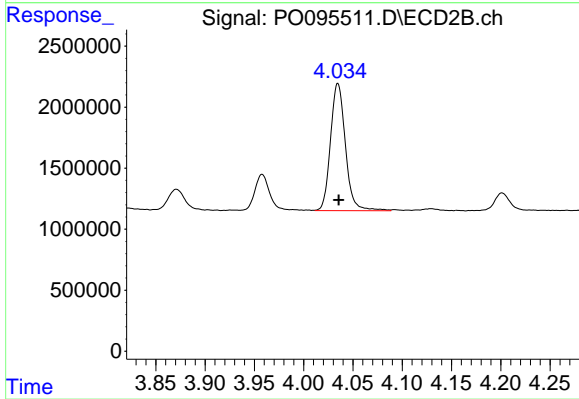
#9 AR-1221-2

R.T.: 3.958 min
 Delta R.T.: 0.000 min
 Response: 3130321
 Conc: 201.64 ng/ml



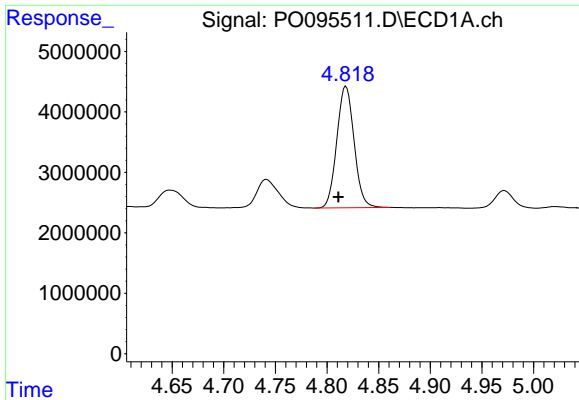
#10 AR-1221-3

R.T.: 4.818 min
 Delta R.T.: 0.007 min
 Response: 23396993
 Conc: 230.42 ng/ml



#10 AR-1221-3

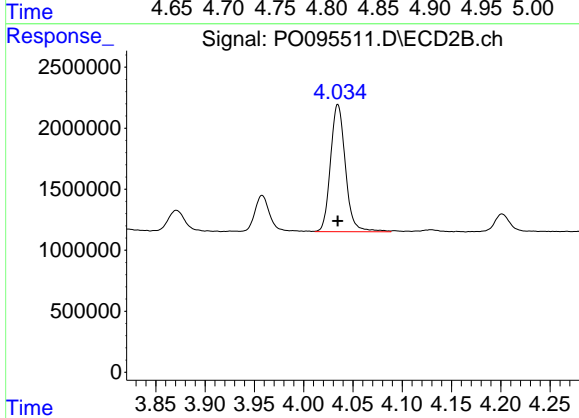
R.T.: 4.035 min
 Delta R.T.: 0.000 min
 Response: 11007884
 Conc: 237.03 ng/ml



#11 AR-1232-1

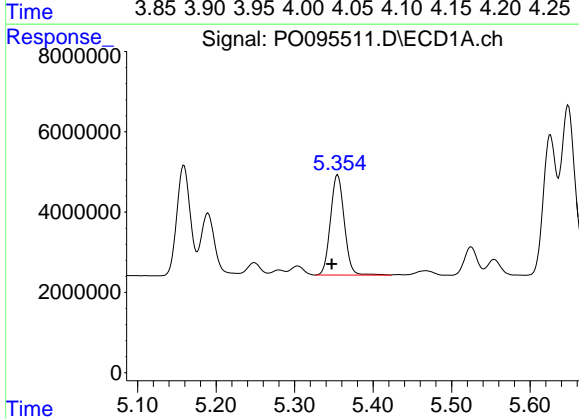
R.T.: 4.818 min
 Delta R.T.: 0.007 min
 Response: 23396993
 Conc: 318.99 ng/ml

Instrument :
 ECD_O
 ClientSampleId :



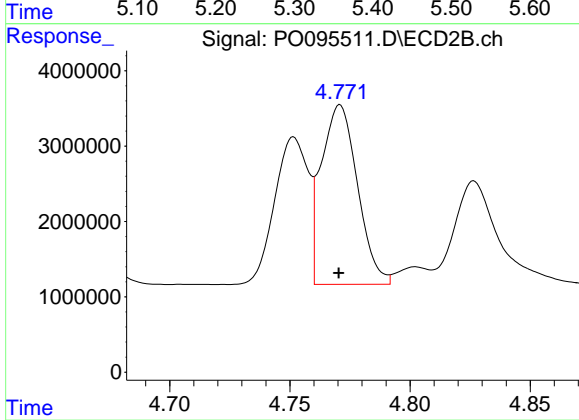
#11 AR-1232-1

R.T.: 4.035 min
 Delta R.T.: 0.000 min
 Response: 11007884
 Conc: 327.73 ng/ml



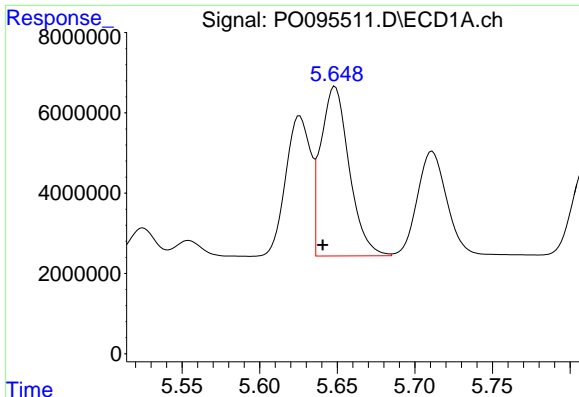
#12 AR-1232-2

R.T.: 5.355 min
 Delta R.T.: 0.008 min
 Response: 30536447
 Conc: 743.17 ng/ml



#12 AR-1232-2

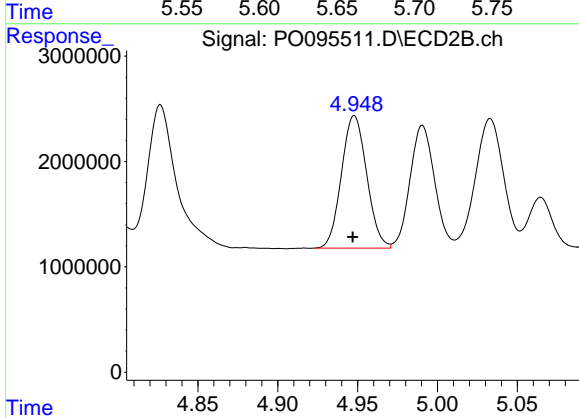
R.T.: 4.771 min
 Delta R.T.: 0.000 min
 Response: 25010290
 Conc: 738.96 ng/ml



#13 AR-1232-3

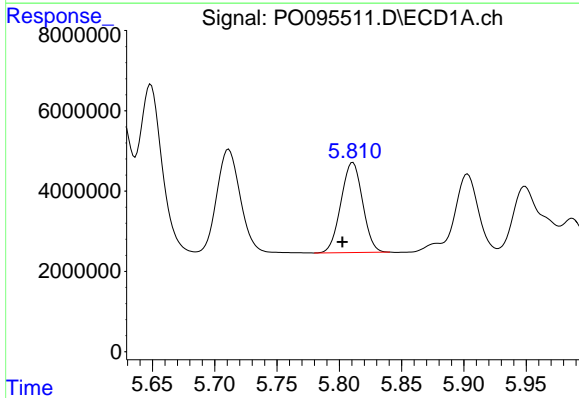
R.T.: 5.649 min
 Delta R.T.: 0.008 min
 Response: 53839867
 Conc: 728.47 ng/ml

Instrument :
 ECD_O
 ClientSampleId :



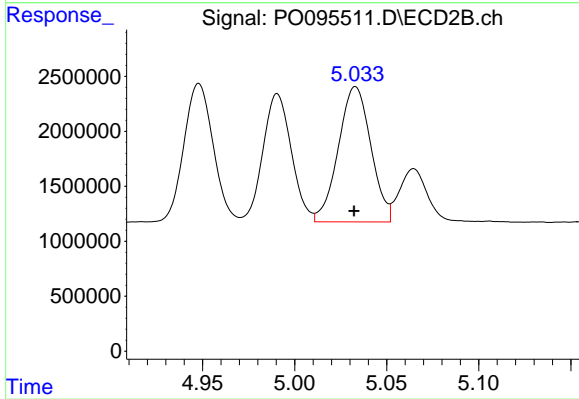
#13 AR-1232-3

R.T.: 4.948 min
 Delta R.T.: 0.000 min
 Response: 13858584
 Conc: 743.30 ng/ml



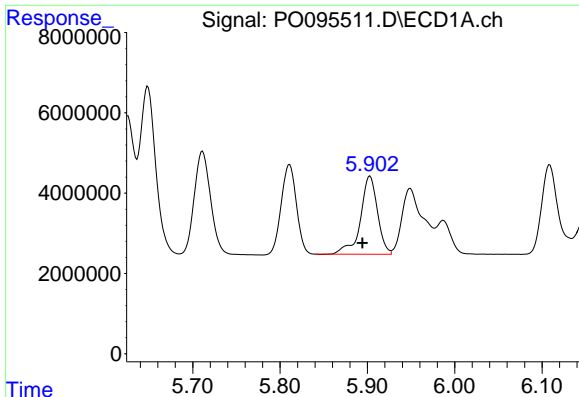
#14 AR-1232-4

R.T.: 5.811 min
 Delta R.T.: 0.008 min
 Response: 27272417
 Conc: 736.39 ng/ml



#14 AR-1232-4

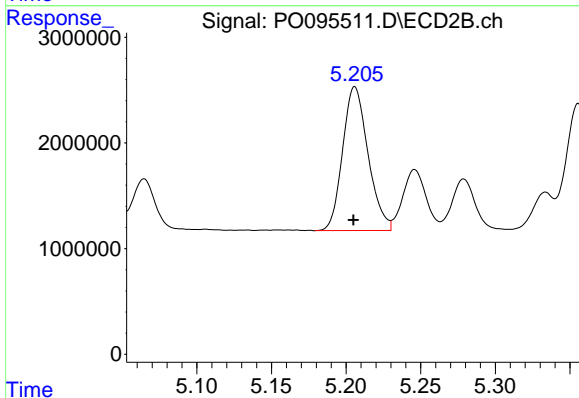
R.T.: 5.033 min
 Delta R.T.: 0.000 min
 Response: 15141364
 Conc: 851.05 ng/ml



#15 AR-1232-5

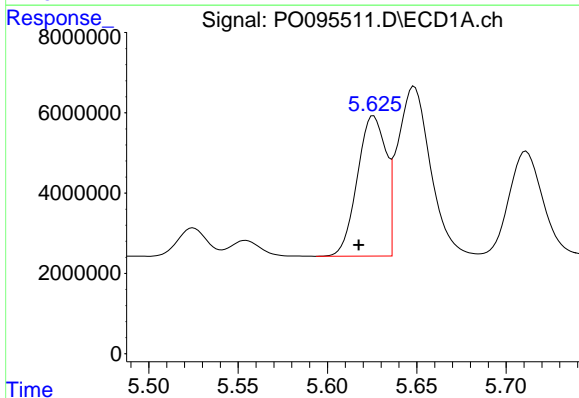
R.T.: 5.903 min
 Delta R.T.: 0.009 min
 Response: 26300714
 Conc: 857.04 ng/ml

Instrument :
 ECD_O
 ClientSampleId :



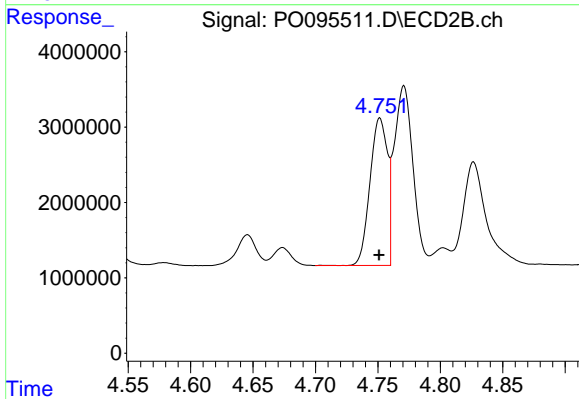
#15 AR-1232-5

R.T.: 5.206 min
 Delta R.T.: 0.000 min
 Response: 16146516
 Conc: 820.18 ng/ml



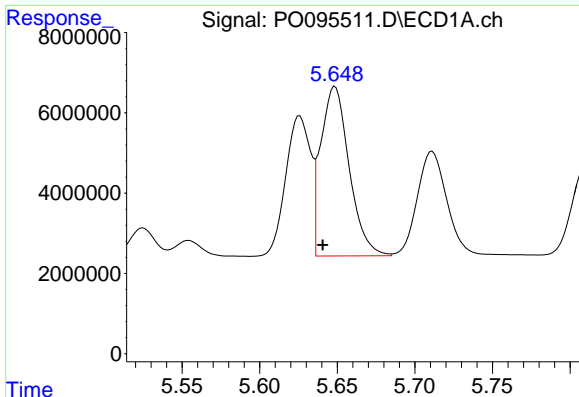
#16 AR-1242-1

R.T.: 5.626 min
 Delta R.T.: 0.008 min
 Response: 38861995
 Conc: 419.88 ng/ml



#16 AR-1242-1

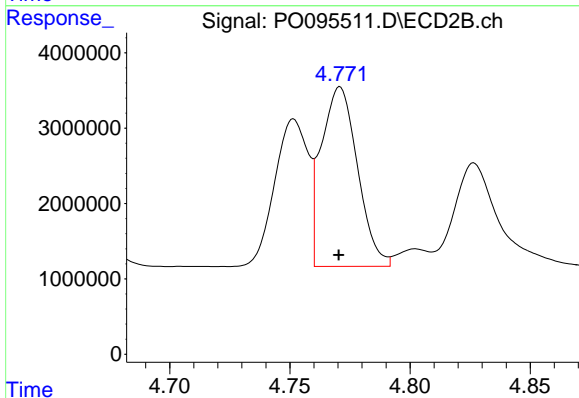
R.T.: 4.752 min
 Delta R.T.: 0.000 min
 Response: 18996671
 Conc: 425.84 ng/ml



#17 AR-1242-2

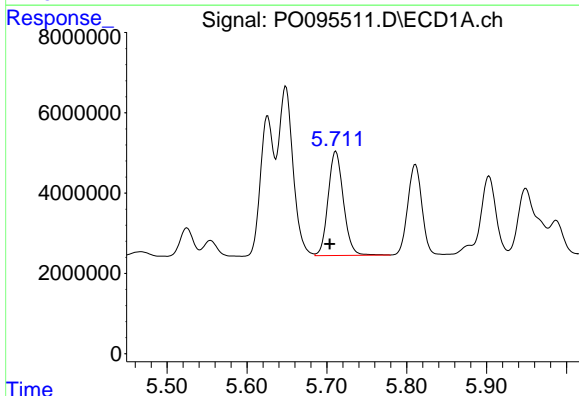
R.T.: 5.649 min
 Delta R.T.: 0.008 min
 Response: 53839867
 Conc: 422.42 ng/ml

Instrument :
 ECD_O
 ClientSampleId :



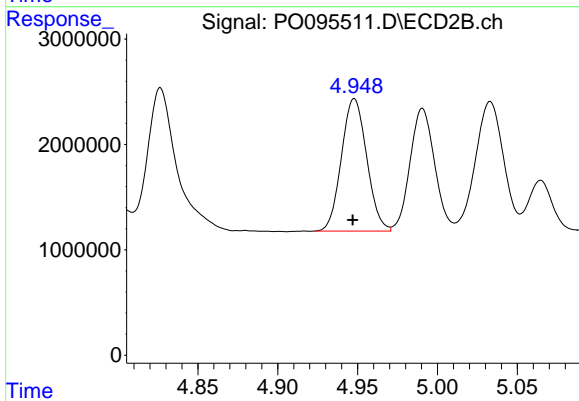
#17 AR-1242-2

R.T.: 4.771 min
 Delta R.T.: 0.000 min
 Response: 25010290
 Conc: 430.47 ng/ml



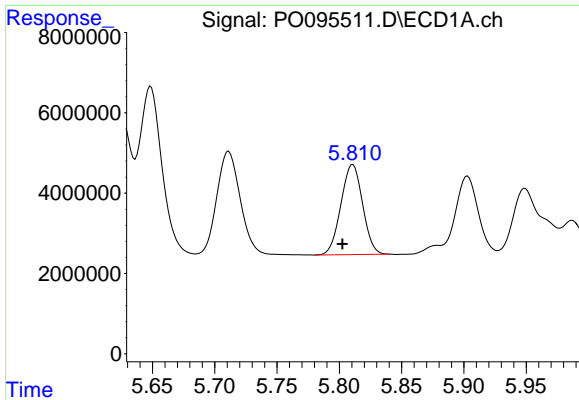
#18 AR-1242-3

R.T.: 5.711 min
 Delta R.T.: 0.008 min
 Response: 34441514
 Conc: 423.22 ng/ml



#18 AR-1242-3

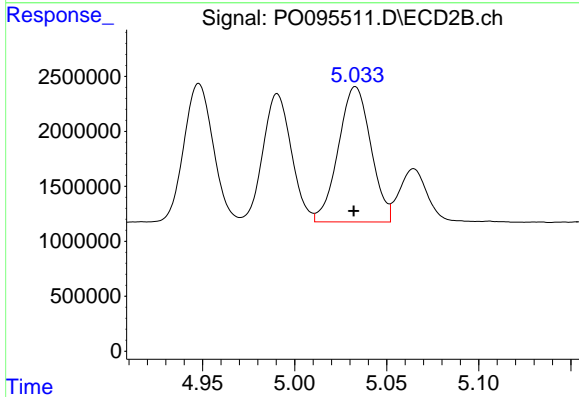
R.T.: 4.948 min
 Delta R.T.: 0.000 min
 Response: 13858584
 Conc: 440.10 ng/ml



#19 AR-1242-4

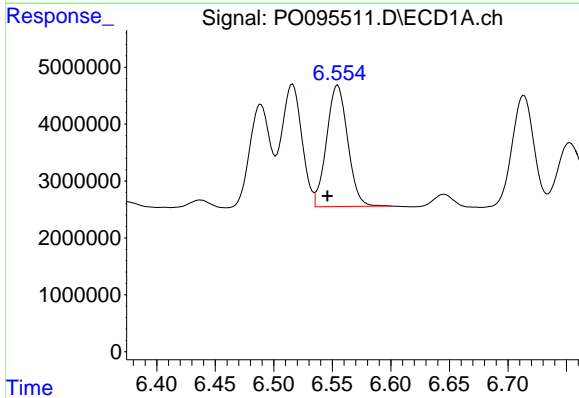
R.T.: 5.811 min
 Delta R.T.: 0.008 min
 Response: 27272417
 Conc: 423.08 ng/ml

Instrument :
 ECD_O
 ClientSampleId :



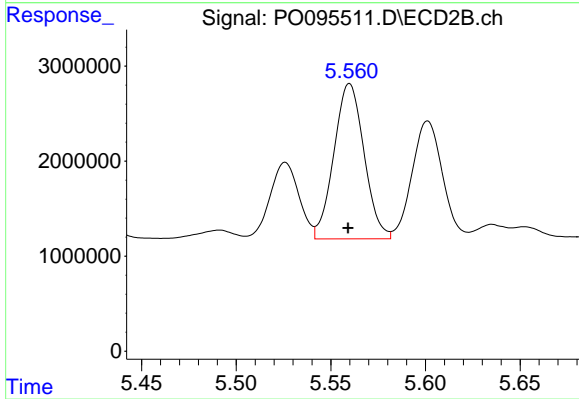
#19 AR-1242-4

R.T.: 5.033 min
 Delta R.T.: 0.001 min
 Response: 15141364
 Conc: 448.87 ng/ml



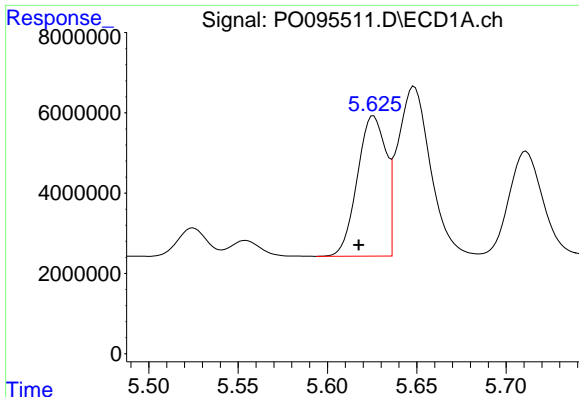
#20 AR-1242-5

R.T.: 6.555 min
 Delta R.T.: 0.009 min
 Response: 26854697
 Conc: 388.99 ng/ml



#20 AR-1242-5

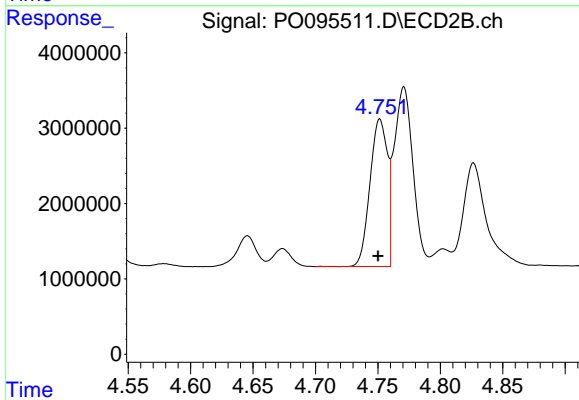
R.T.: 5.560 min
 Delta R.T.: 0.000 min
 Response: 18147120
 Conc: 423.24 ng/ml



#21 AR-1248-1

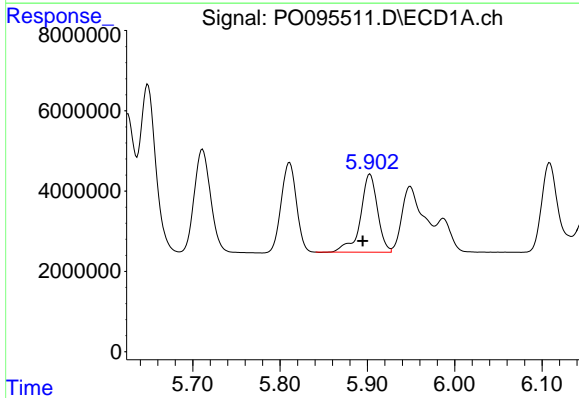
R.T.: 5.626 min
 Delta R.T.: 0.008 min
 Response: 38861995
 Conc: 524.50 ng/ml

Instrument :
 ECD_O
 ClientSampleId :



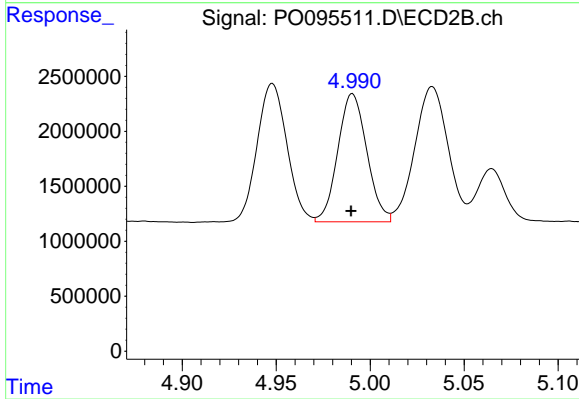
#21 AR-1248-1

R.T.: 4.752 min
 Delta R.T.: 0.001 min
 Response: 18996671
 Conc: 539.72 ng/ml



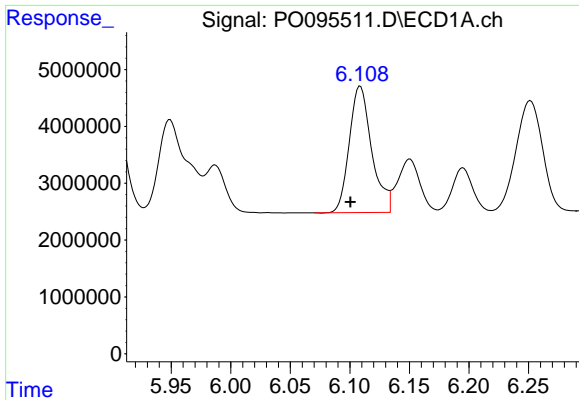
#22 AR-1248-2

R.T.: 5.903 min
 Delta R.T.: 0.008 min
 Response: 26300714
 Conc: 245.85 ng/ml



#22 AR-1248-2

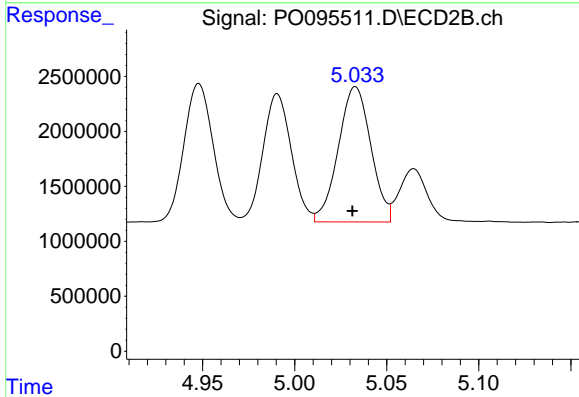
R.T.: 4.991 min
 Delta R.T.: 0.000 min
 Response: 12523731
 Conc: 250.81 ng/ml



#23 AR-1248-3

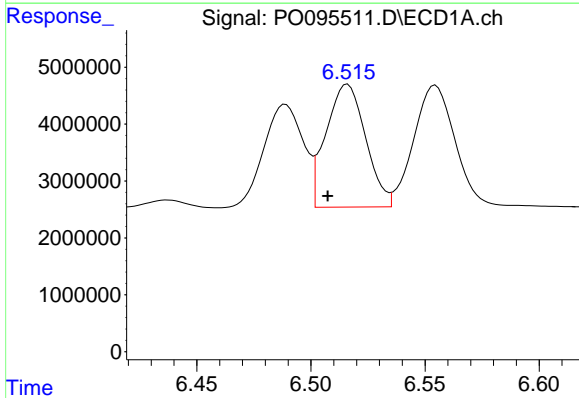
R.T.: 6.109 min
 Delta R.T.: 0.008 min
 Response: 29120527
 Conc: 254.22 ng/ml

Instrument :
 ECD_O
 ClientSampleId :



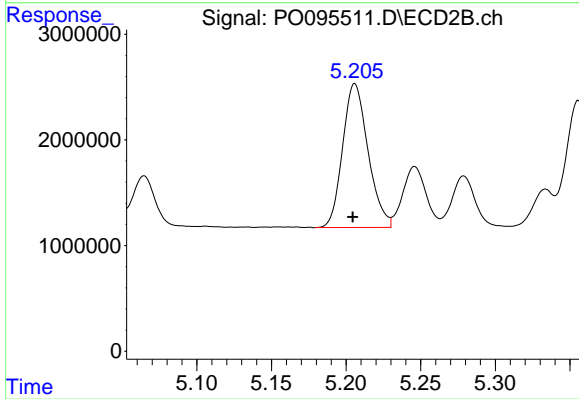
#23 AR-1248-3

R.T.: 5.033 min
 Delta R.T.: 0.002 min
 Response: 15141364
 Conc: 289.09 ng/ml



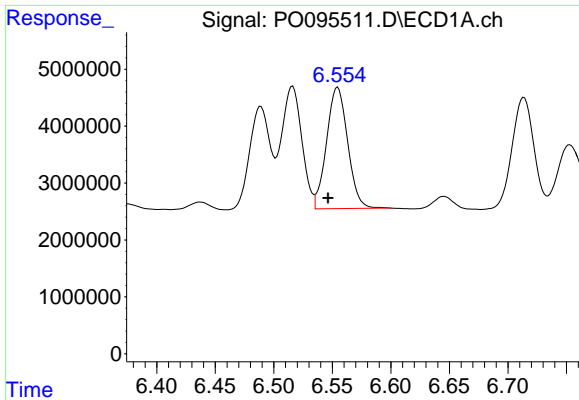
#24 AR-1248-4

R.T.: 6.516 min
 Delta R.T.: 0.009 min
 Response: 26120650
 Conc: 210.57 ng/ml



#24 AR-1248-4

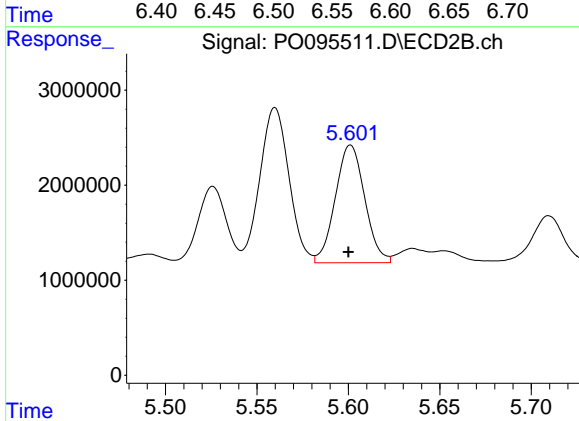
R.T.: 5.206 min
 Delta R.T.: 0.001 min
 Response: 16146516
 Conc: 264.72 ng/ml



#25 AR-1248-5

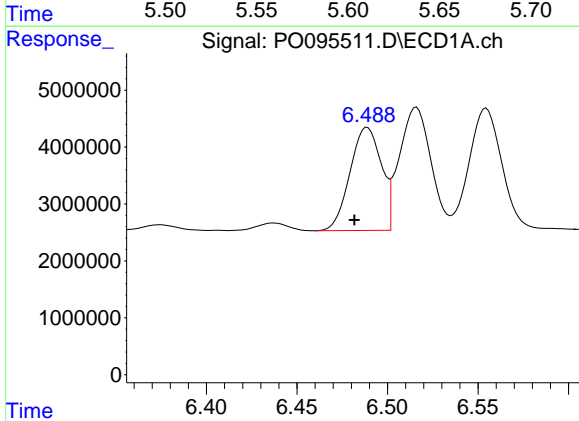
R.T.: 6.555 min
 Delta R.T.: 0.008 min
 Response: 26854697
 Conc: 220.38 ng/ml

Instrument :
 ECD_O
 ClientSampleId :



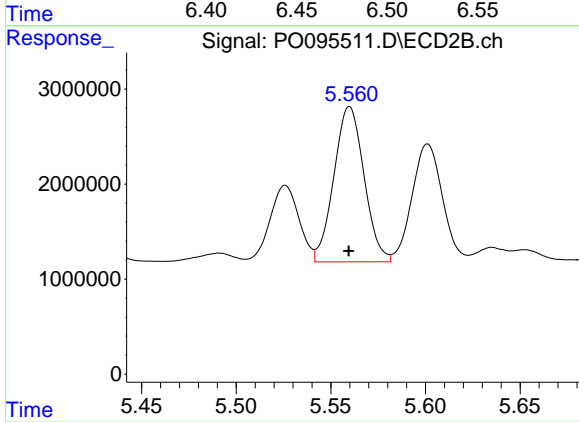
#25 AR-1248-5

R.T.: 5.601 min
 Delta R.T.: 0.001 min
 Response: 13894021
 Conc: 233.47 ng/ml



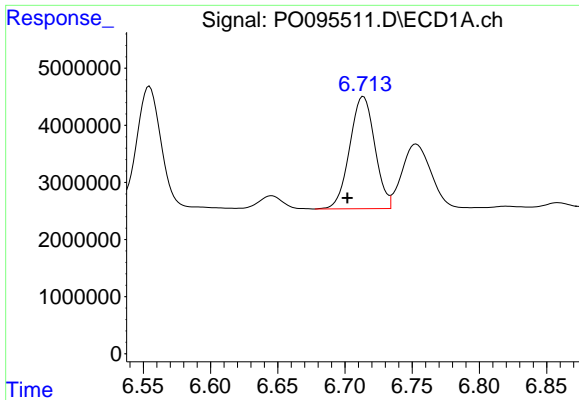
#26 AR-1254-1

R.T.: 6.489 min
 Delta R.T.: 0.007 min
 Response: 21789209
 Conc: 170.86 ng/ml



#26 AR-1254-1

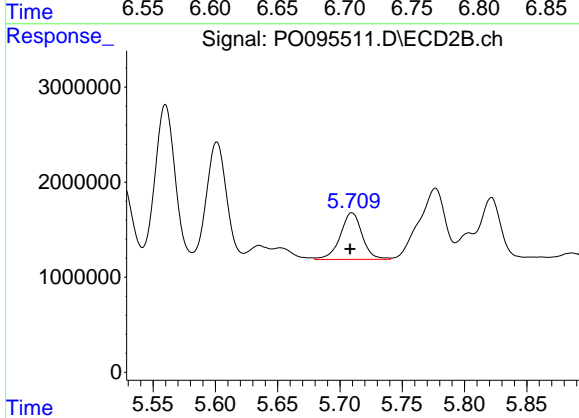
R.T.: 5.560 min
 Delta R.T.: 0.000 min
 Response: 18147120
 Conc: 206.21 ng/ml



#27 AR-1254-2

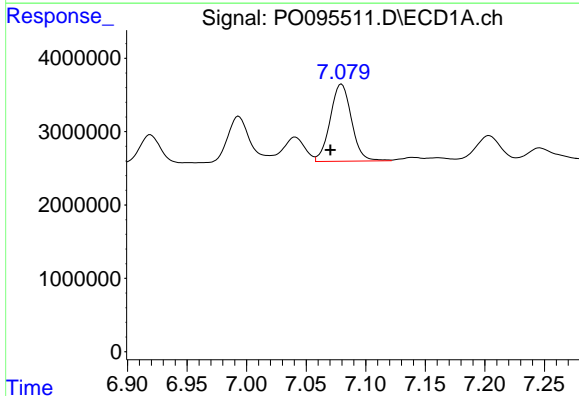
R.T.: 6.714 min
 Delta R.T.: 0.012 min
 Response: 25534392
 Conc: 134.58 ng/ml

Instrument :
 ECD_O
 ClientSampleId :



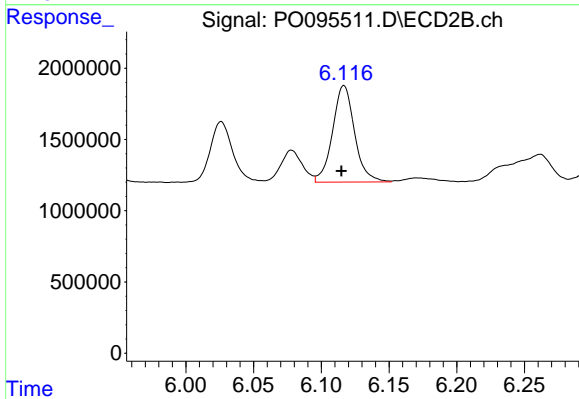
#27 AR-1254-2

R.T.: 5.710 min
 Delta R.T.: 0.001 min
 Response: 6026361
 Conc: 75.60 ng/ml



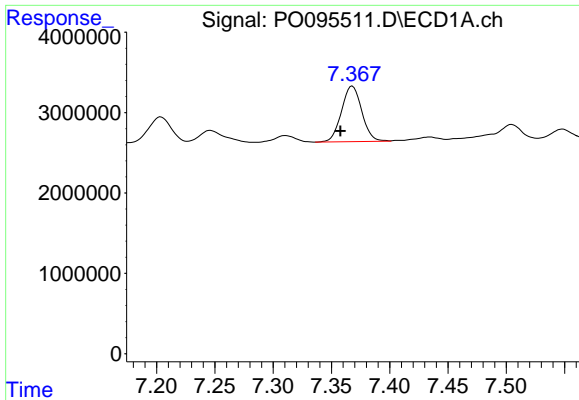
#28 AR-1254-3

R.T.: 7.080 min
 Delta R.T.: 0.009 min
 Response: 13109827
 Conc: 69.10 ng/ml



#28 AR-1254-3

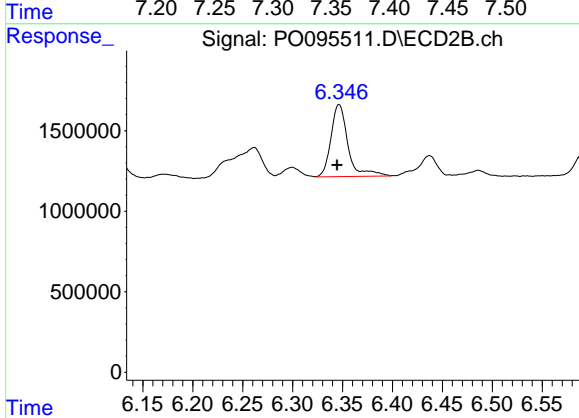
R.T.: 6.117 min
 Delta R.T.: 0.002 min
 Response: 7670765
 Conc: 62.76 ng/ml



#29 AR-1254-4

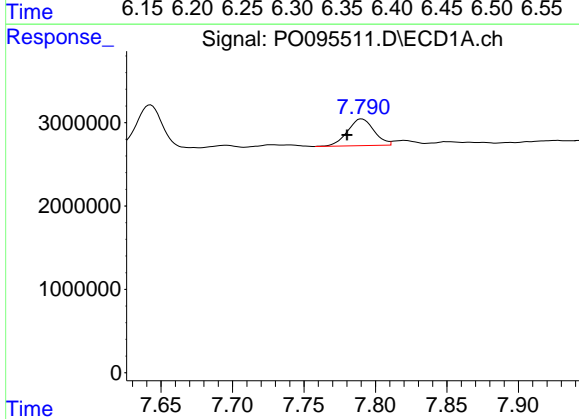
R.T.: 7.368 min
 Delta R.T.: 0.010 min
 Response: 8373154
 Conc: 59.14 ng/ml

Instrument :
 ECD_O
 ClientSampleId :



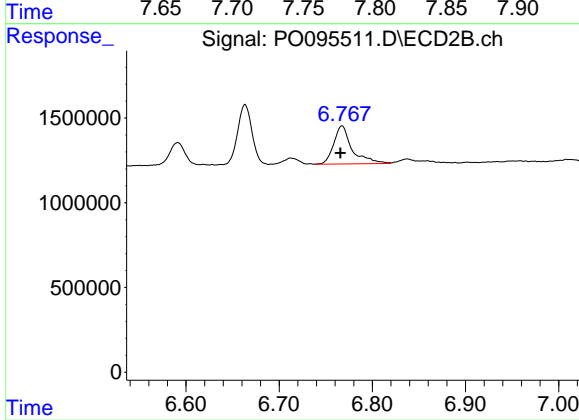
#29 AR-1254-4

R.T.: 6.347 min
 Delta R.T.: 0.002 min
 Response: 5287863
 Conc: 70.07 ng/ml



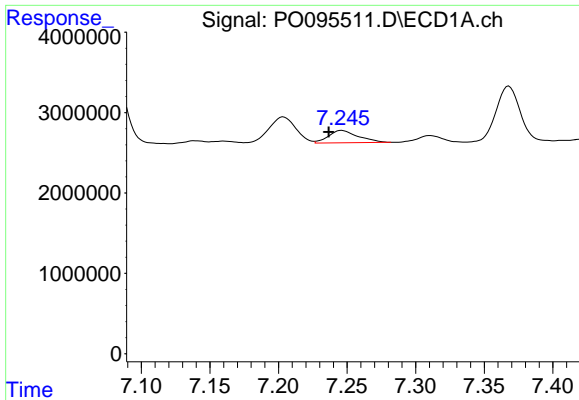
#30 AR-1254-5

R.T.: 7.790 min
 Delta R.T.: 0.010 min
 Response: 4143031
 Conc: 26.14 ng/ml



#30 AR-1254-5

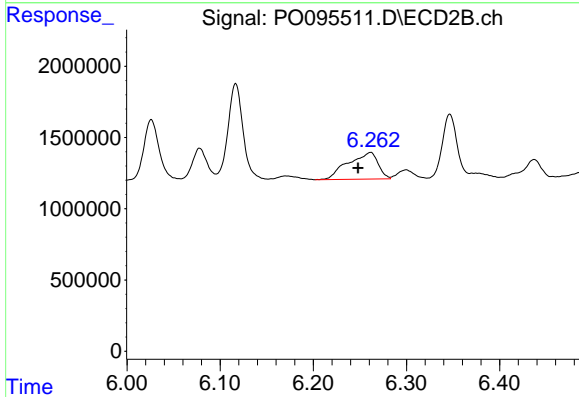
R.T.: 6.768 min
 Delta R.T.: 0.002 min
 Response: 3080575
 Conc: 27.53 ng/ml



#31 AR-1260-1

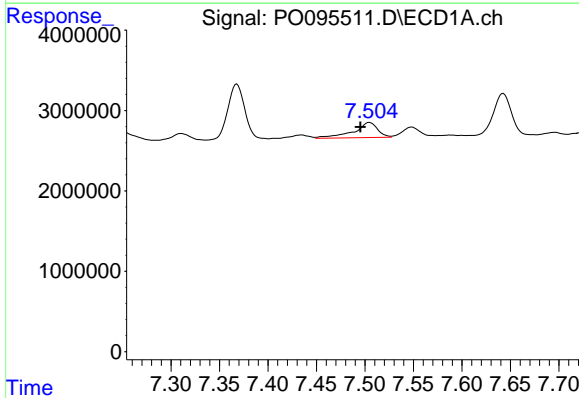
R.T.: 7.246 min
 Delta R.T.: 0.009 min
 Response: 2337062
 Conc: 15.76 ng/ml

Instrument :
 ECD_O
 ClientSampleId :



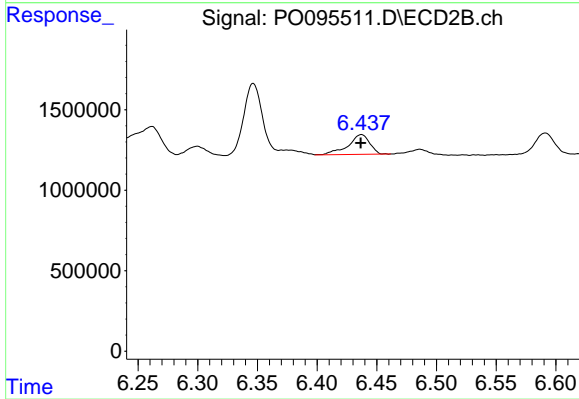
#31 AR-1260-1

R.T.: 6.261 min
 Delta R.T.: 0.013 min
 Response: 4188340
 Conc: 49.10 ng/ml



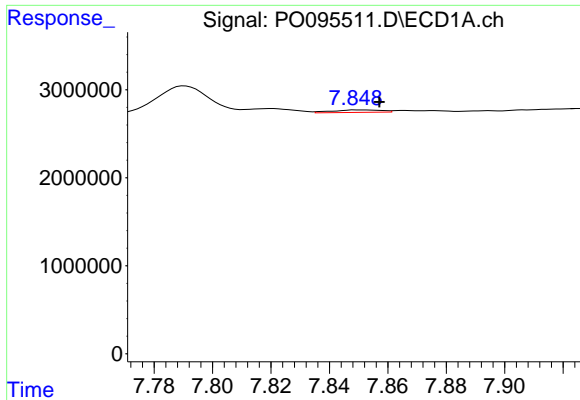
#32 AR-1260-2

R.T.: 7.505 min
 Delta R.T.: 0.010 min
 Response: 3229473
 Conc: 18.40 ng/ml



#32 AR-1260-2

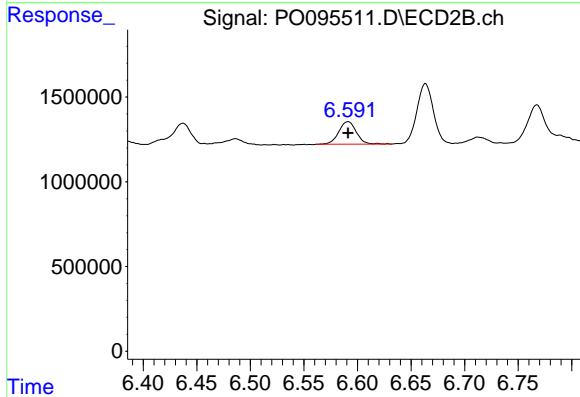
R.T.: 6.437 min
 Delta R.T.: 0.000 min
 Response: 1545275
 Conc: 15.12 ng/ml



#33 AR-1260-3

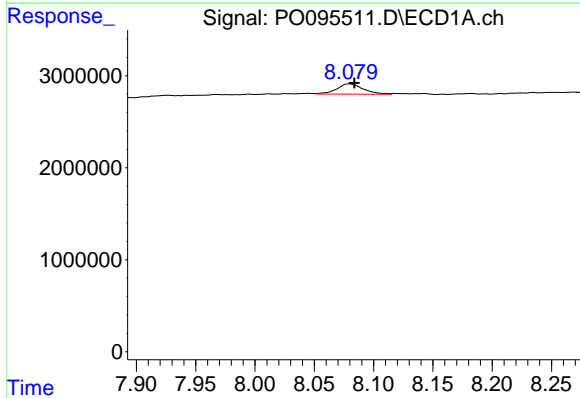
R.T.: 7.850 min
 Delta R.T.: -0.007 min
 Response: 322937
 Conc: 2.88 ng/ml

Instrument :
 ECD_O
 ClientSampleId :



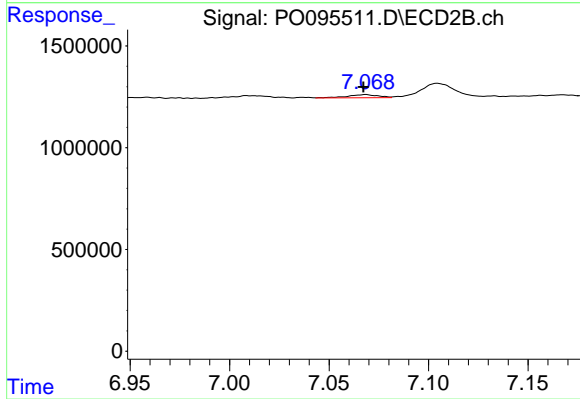
#33 AR-1260-3

R.T.: 6.591 min
 Delta R.T.: 0.000 min
 Response: 1527310
 Conc: 16.31 ng/ml



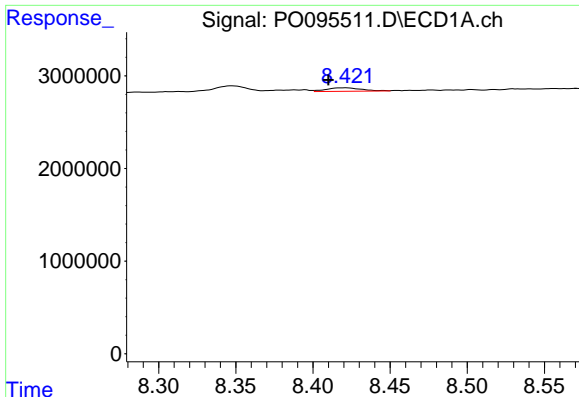
#34 AR-1260-4

R.T.: 8.079 min
 Delta R.T.: -0.005 min
 Response: 1759806
 Conc: 12.92 ng/ml



#34 AR-1260-4

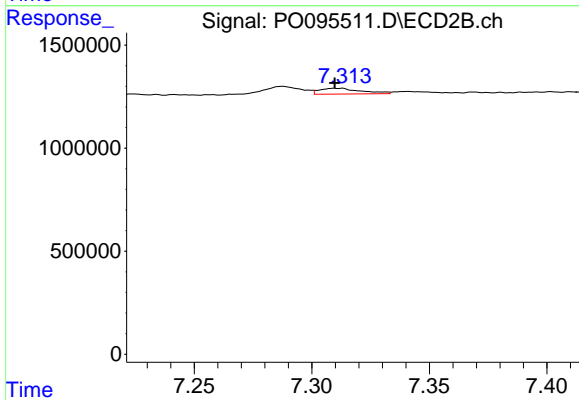
R.T.: 7.068 min
 Delta R.T.: 0.001 min
 Response: 168679
 Conc: 2.48 ng/ml



#35 AR-1260-5

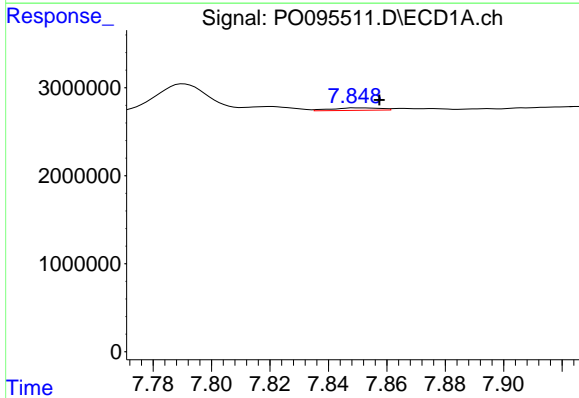
R.T.: 8.422 min
 Delta R.T.: 0.012 min
 Response: 592832
 Conc: 2.33 ng/ml

Instrument :
 ECD_O
 ClientSampleId :



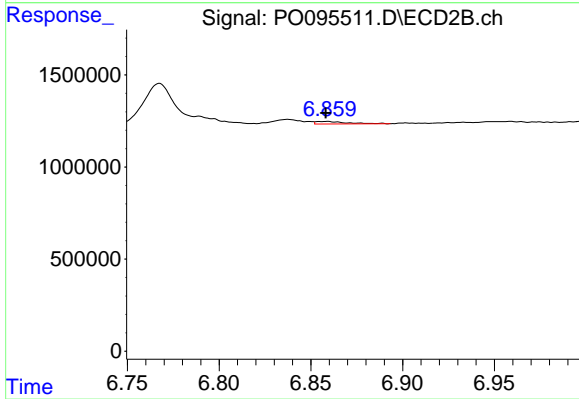
#35 AR-1260-5

R.T.: 7.311 min
 Delta R.T.: 0.002 min
 Response: 347118
 Conc: 2.20 ng/ml



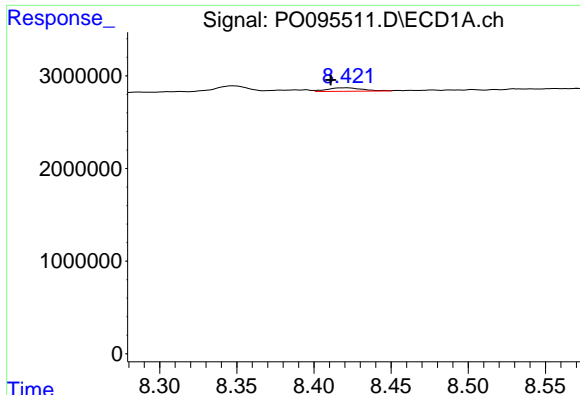
#36 AR-1262-1

R.T.: 7.850 min
 Delta R.T.: -0.008 min
 Response: 322937
 Conc: 1.75 ng/ml



#36 AR-1262-1

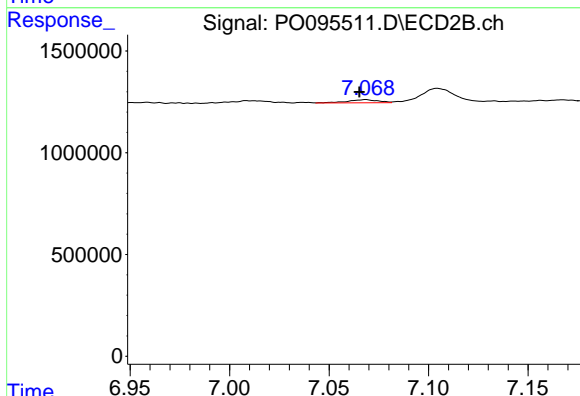
R.T.: 6.858 min
 Delta R.T.: 0.000 min
 Response: 159044
 Conc: 3.44 ng/ml



#37 AR-1262-2

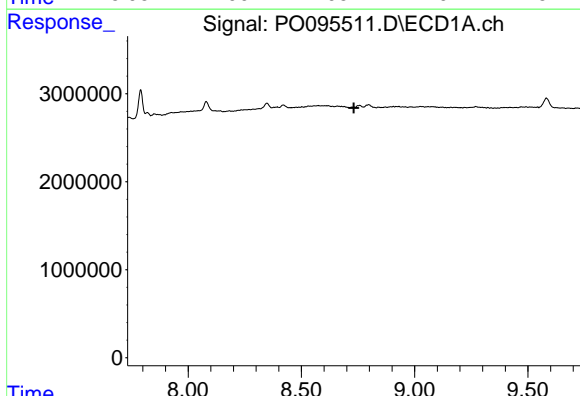
R.T.: 8.422 min
 Delta R.T.: 0.011 min
 Response: 592832
 Conc: 1.86 ng/ml

Instrument :
 ECD_O
 ClientSampleId :



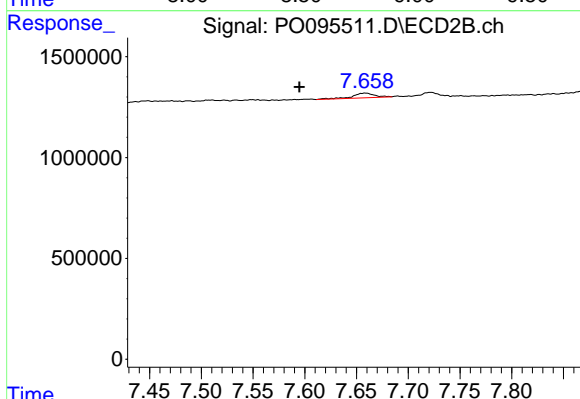
#37 AR-1262-2

R.T.: 7.068 min
 Delta R.T.: 0.003 min
 Response: 168679
 Conc: 1.73 ng/ml



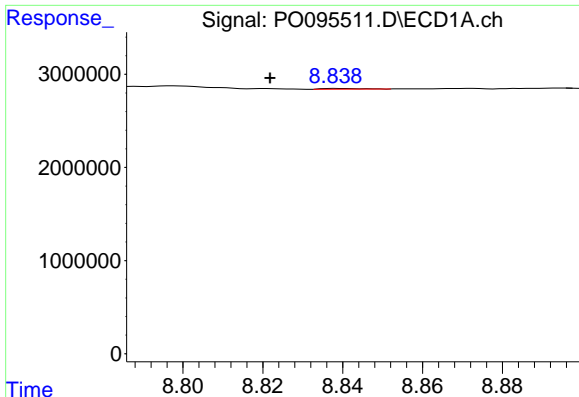
#38 AR-1262-3

R.T.: 8.721 min
 Delta R.T.: -0.010 min
 Response: -44727
 Conc: N.D.



#38 AR-1262-3

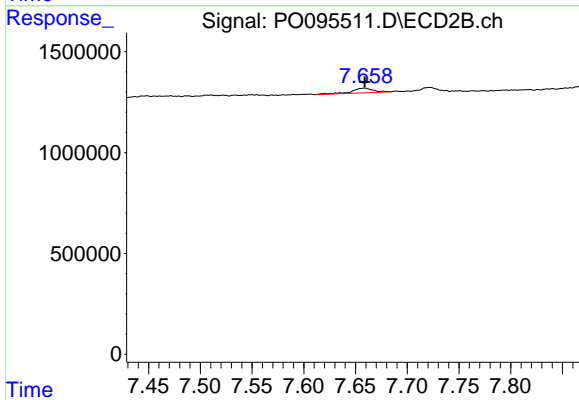
R.T.: 7.658 min
 Delta R.T.: 0.063 min
 Response: 353246
 Conc: 4.61 ng/ml



#39 AR-1262-4

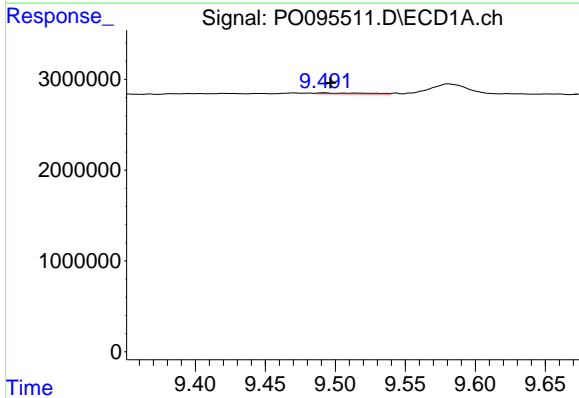
R.T.: 8.839 min
 Delta R.T.: 0.017 min
 Response: 55264
 Conc: 0.47 ng/ml

Instrument :
 ECD_O
 ClientSampleId :



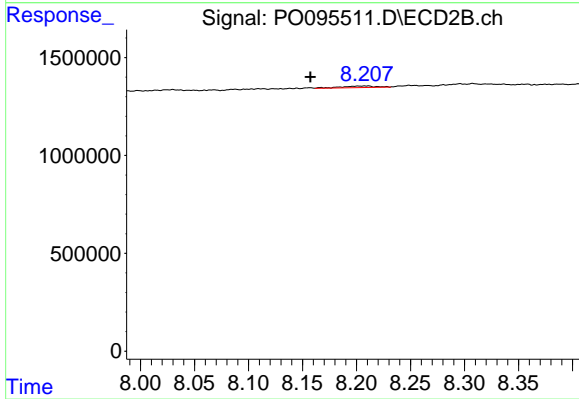
#39 AR-1262-4

R.T.: 7.658 min
 Delta R.T.: 0.000 min
 Response: 353246
 Conc: 2.57 ng/ml



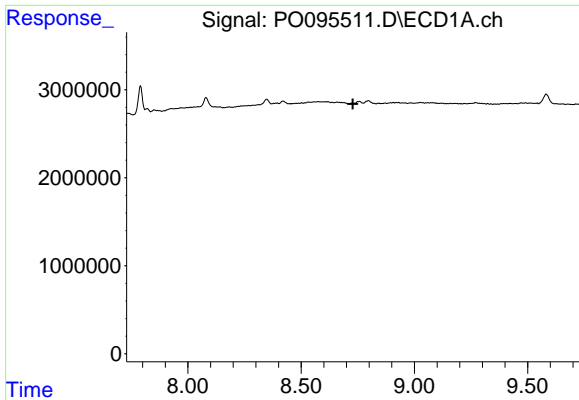
#40 AR-1262-5

R.T.: 9.492 min
 Delta R.T.: -0.004 min
 Response: 230128
 Conc: 1.92 ng/ml



#40 AR-1262-5

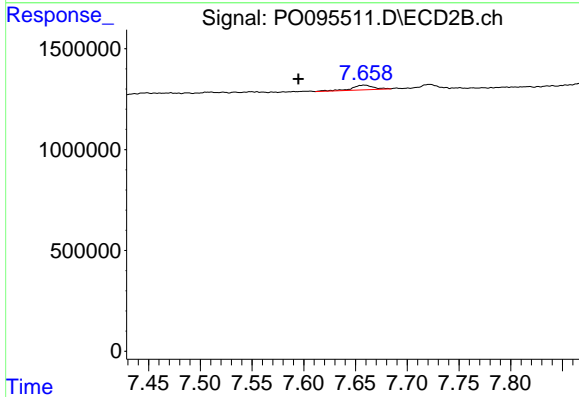
R.T.: 8.211 min
 Delta R.T.: 0.053 min
 Response: 164652
 Conc: 2.59 ng/ml



#41 AR-1268-1

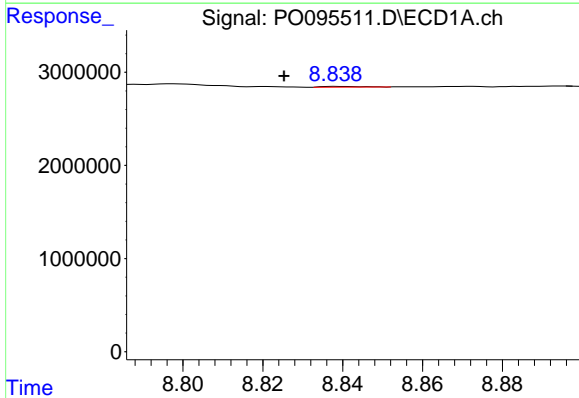
R.T.: 8.721 min
 Delta R.T.: -0.007 min
 Response: -44727
 Conc: N.D.

Instrument :
 ECD_O
 ClientSampleId :



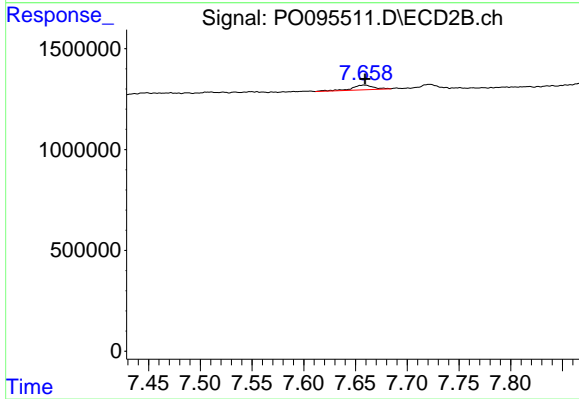
#41 AR-1268-1

R.T.: 7.658 min
 Delta R.T.: 0.064 min
 Response: 353246
 Conc: 1.63 ng/ml



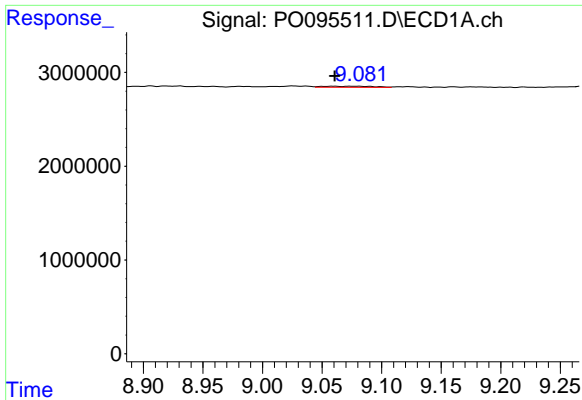
#42 AR-1268-2

R.T.: 8.839 min
 Delta R.T.: 0.014 min
 Response: 55264
 Conc: 0.16 ng/ml



#42 AR-1268-2

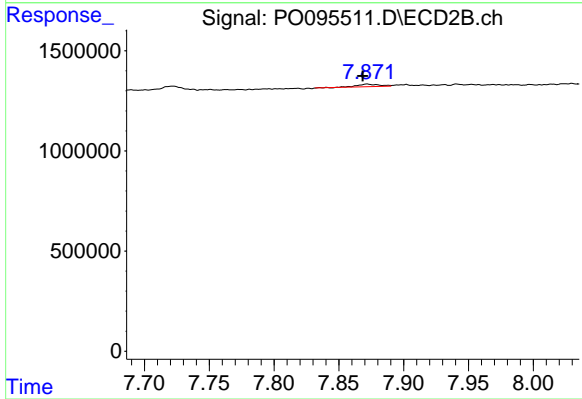
R.T.: 7.658 min
 Delta R.T.: 0.000 min
 Response: 353246
 Conc: 1.85 ng/ml



#43 AR-1268-3

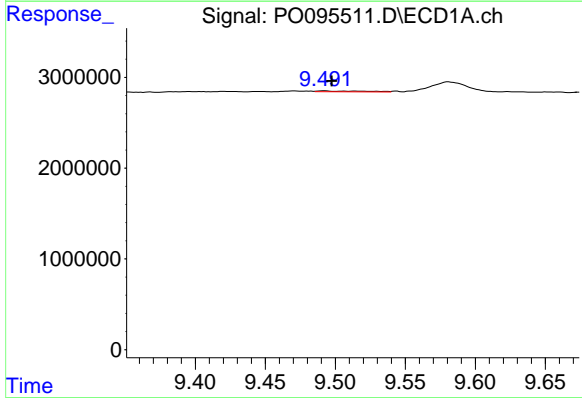
R.T.: 9.060 min
 Delta R.T.: 0.000 min
 Response: 345308
 Conc: 1.19 ng/ml

Instrument :
 ECD_O
 ClientSampleId :



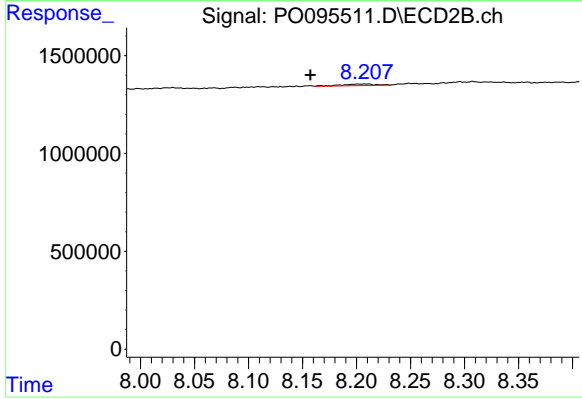
#43 AR-1268-3

R.T.: 7.872 min
 Delta R.T.: 0.003 min
 Response: 146966
 Conc: 0.91 ng/ml



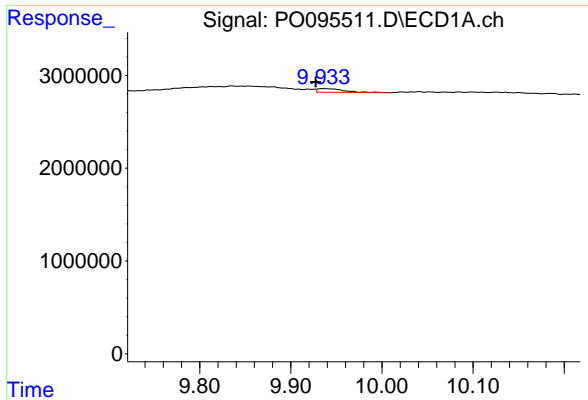
#44 AR-1268-4

R.T.: 9.492 min
 Delta R.T.: -0.005 min
 Response: 230128
 Conc: 1.81 ng/ml



#44 AR-1268-4

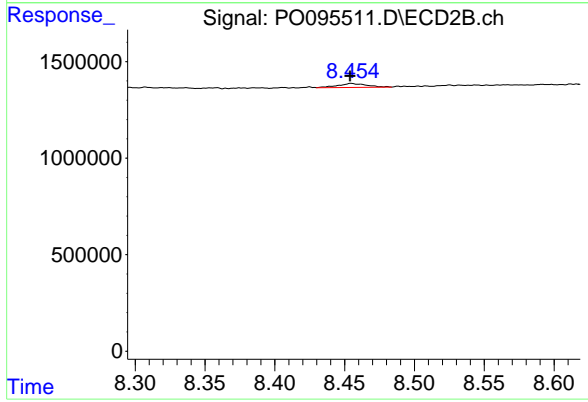
R.T.: 8.211 min
 Delta R.T.: 0.053 min
 Response: 164652
 Conc: 2.39 ng/ml



#45 AR-1268-5

R.T.: 9.936 min
 Delta R.T.: 0.008 min
 Response: 775929
 Conc: 0.82 ng/ml

Instrument :
 ECD_O
 ClientSampleId :



#45 AR-1268-5

R.T.: 8.455 min
 Delta R.T.: 0.001 min
 Response: 286450
 Conc: 0.60 ng/ml