

Data Path : Z:\pestpcbsrv\HPCHEM1\ECD\_0\Data\P0060625\  
 Data File : PO111512.D  
 Signal(s) : Signal #1: ECD1A.ch Signal #2: ECD2B.ch  
 Acq On : 06 Jun 2025 09:17  
 Operator : YP/AJ  
 Sample : AR1660CCC500  
 Misc :  
 ALS Vial : 3 Sample Multiplier: 1

Instrument :  
 ECD\_0  
 ClientSampleId :  
 AR1660CCC500

Integration File signal 1: autoint1.e  
 Integration File signal 2: autoint2.e  
 Quant Time: Jun 06 12:05:10 2025  
 Quant Method : Z:\pestpcbsrv\HPCHEM1\ECD\_0\methods\P0051525.M  
 Quant Title : GC EXTRACTABLES  
 QLast Update : Thu May 15 07:11:53 2025  
 Response via : Initial Calibration  
 Integrator: ChemStation

Volume Inj. : 2 µl  
 Signal #1 Phase : ZB-MR1 Signal #2 Phase: ZB-MR2  
 Signal #1 Info : 30Mx0.32mmx 0.50µ Signal #2 Info : 30M x 0.32mm x 0.25µm

Compound	RT#1	RT#2	Resp#1	Resp#2	ng/ml	ng/ml
System Monitoring Compounds						
1) SA Tetrachlo...	3.679	3.675	316.6E6	286.0E6	53.807	52.459
2) SA Decachlor...	8.715	8.666	249.1E6	78734935	48.253	42.556
Target Compounds						
3) L1 AR-1016-1	4.768	4.753	123.3E6	95852472	547.839	502.036
4) L1 AR-1016-2	4.786	4.771	177.5E6	139.3E6	556.617	502.609
5) L1 AR-1016-3	4.843	4.946	124.1E6	72415676	571.661	495.743
6) L1 AR-1016-4	4.963	4.989	98341754	59387080	564.702	494.527
7) L1 AR-1016-5	5.220	5.201	94047477	75976258	534.387	492.073
8) L2 AR-1221-1	3.889	3.883	13253238	10287910	152.150	139.321
9) L2 AR-1221-2	3.977	3.970	18773863	15120605	294.705	277.880
10) L2 AR-1221-3	4.052	4.045	66074061	54971961	343.550	328.975
11) L3 AR-1232-1	4.052	4.045	66074061	54971961	431.367	420.935
12) L3 AR-1232-2	4.545	4.771	91847012	139.3E6	1120.817	1061.948
13) L3 AR-1232-3	4.786	4.946	177.5E6	72415676	1160.843	1063.815
14) L3 AR-1232-4	4.963	5.030	98341754	71611419	1195.624	1161.084
15) L3 AR-1232-5	5.006	5.201	76562711	75976258	1411.052	1155.839
16) L4 AR-1242-1	4.768	4.753	123.3E6	95852472	644.845	594.962
17) L4 AR-1242-2	4.786	4.771	177.5E6	139.3E6	652.627	593.699
18) L4 AR-1242-3	4.843	4.946	124.1E6	72415676	667.366	585.799
19) L4 AR-1242-4	4.963	5.030	98341754	71611419	665.369	579.309
20) L4 AR-1242-5	5.615	5.552	25173531	74379345	161.844	489.381 #
21) L5 AR-1248-1	4.768	4.753	123.3E6	95852472	804.972	738.872
22) L5 AR-1248-2	5.006	4.989	76562711	59387080	381.825	337.634
23) L5 AR-1248-3	5.220	5.030	94047477	71611419	367.366	381.695
24) L5 AR-1248-4	5.574	5.201	100.1E6	75976258	276.364	345.598 #
25) L5 AR-1248-5	5.615	5.592	25173531	19001155	96.062	87.031
26) L6 AR-1254-1	5.574	5.552	100.1E6	74379345	263.700	229.539
27) L6 AR-1254-2	5.723	5.700	72934319	52307217	223.194	184.671
28) L6 AR-1254-3	6.144	6.117	141.3E6	95231470	268.614	220.723
29) L6 AR-1254-4	6.358	6.329	20011584	13167410	59.544	53.235
30) L6 AR-1254-5	6.776	6.745	231.6E6	145.4E6	488.053	420.306
31) L7 AR-1260-1	6.260	6.231	174.3E6	122.9E6	571.694	491.738
32) L7 AR-1260-2	6.449	6.420	232.9E6	143.8E6	608.116	488.759
33) L7 AR-1260-3	6.816	6.572	208.2E6	129.7E6	597.248	452.267
34) L7 AR-1260-4	7.075	7.042	153.8E6	93599504	549.486	466.218
35) L7 AR-1260-5	7.318	7.284	399.8E6	207.7E6	555.300	451.916
36) L8 AR-1262-1	6.816	6.784	208.2E6	118.4E6	427.797	347.313
37) L8 AR-1262-2	7.318	7.284	399.8E6	207.7E6	494.452	413.044
38) L8 AR-1262-3	7.602	7.566	96996941	44539600	286.750	237.374
39) L8 AR-1262-4	7.665	7.629	267.0E6	126.7E6	452.224	383.648
40) L8 AR-1262-5	8.163	8.123	101.2E6	34928772	354.889	311.015
41) L9 AR-1268-1	7.602	7.566	96996941	44539600	100.037	84.022

Data Path : Z:\pestpcbsrv\HPCHEM1\ECD\_0\Data\P0060625\  
 Data File : P0111512.D  
 Signal(s) : Signal #1: ECD1A.ch Signal #2: ECD2B.ch  
 Acq On : 06 Jun 2025 09:17  
 Operator : YP/AJ  
 Sample : AR1660CCC500  
 Misc :  
 ALS Vial : 3 Sample Multiplier: 1

Instrument :  
 ECD\_0  
 ClientSampleId :  
 AR1660CCC500

Integration File signal 1: autoint1.e  
 Integration File signal 2: autoint2.e  
 Quant Time: Jun 06 12:05:10 2025  
 Quant Method : Z:\pestpcbsrv\HPCHEM1\ECD\_0\methods\P0051525.M  
 Quant Title : GC EXTRACTABLES  
 QLast Update : Thu May 15 07:11:53 2025  
 Response via : Initial Calibration  
 Integrator: ChemStation

Volume Inj. : 2 µl  
 Signal #1 Phase : ZB-MR1 Signal #2 Phase: ZB-MR2  
 Signal #1 Info : 30Mx0.32mmx 0.50µ Signal #2 Info : 30M x 0.32mm x 0.25µm

	Compound	RT#1	RT#2	Resp#1	Resp#2	ng/ml	ng/ml
42)	L9 AR-1268-2	7.665	7.629	267.0E6	126.7E6	299.155	262.664
43)	L9 AR-1268-3	7.873	7.836	5039088	2374135	6.641	6.813
44)	L9 AR-1268-4	8.163	8.123	101.2E6	34928772	309.942	274.448
45)	L9 AR-1268-5	8.458	8.413	27525516	9512553	12.753	12.636

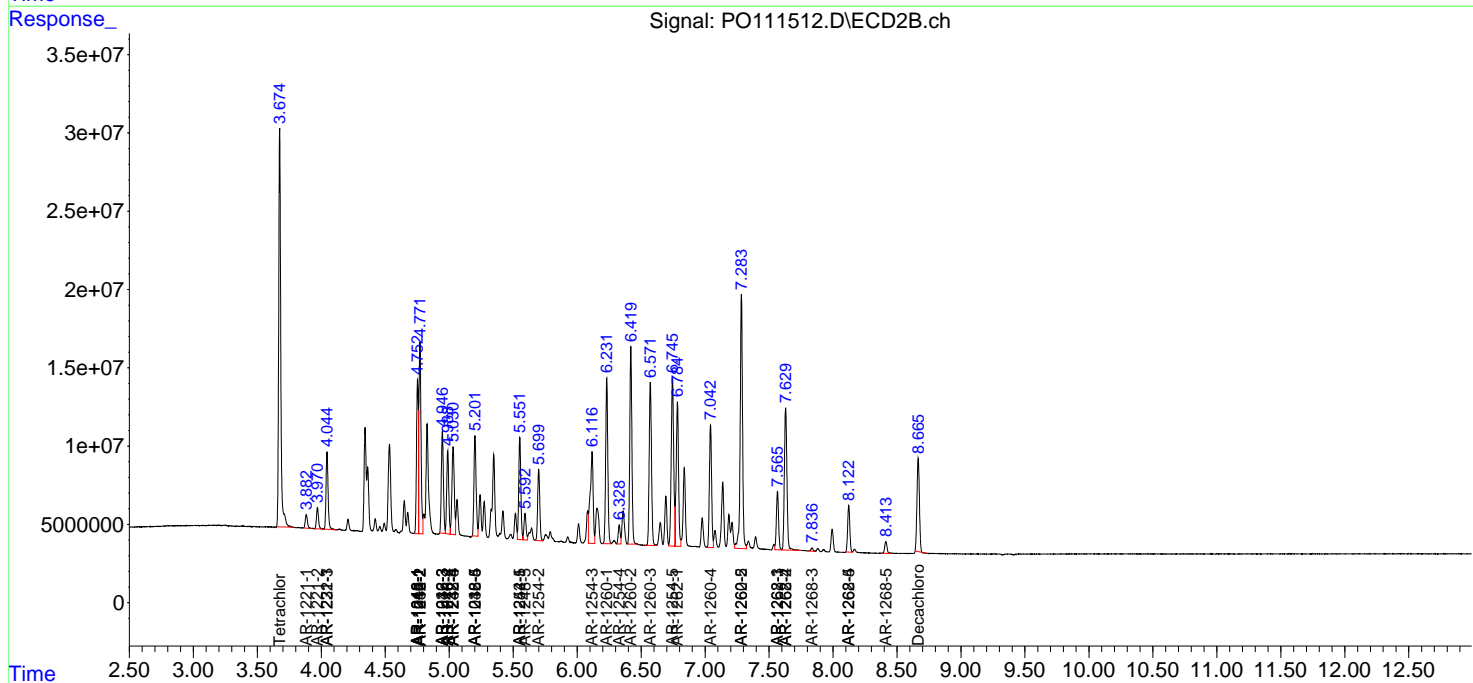
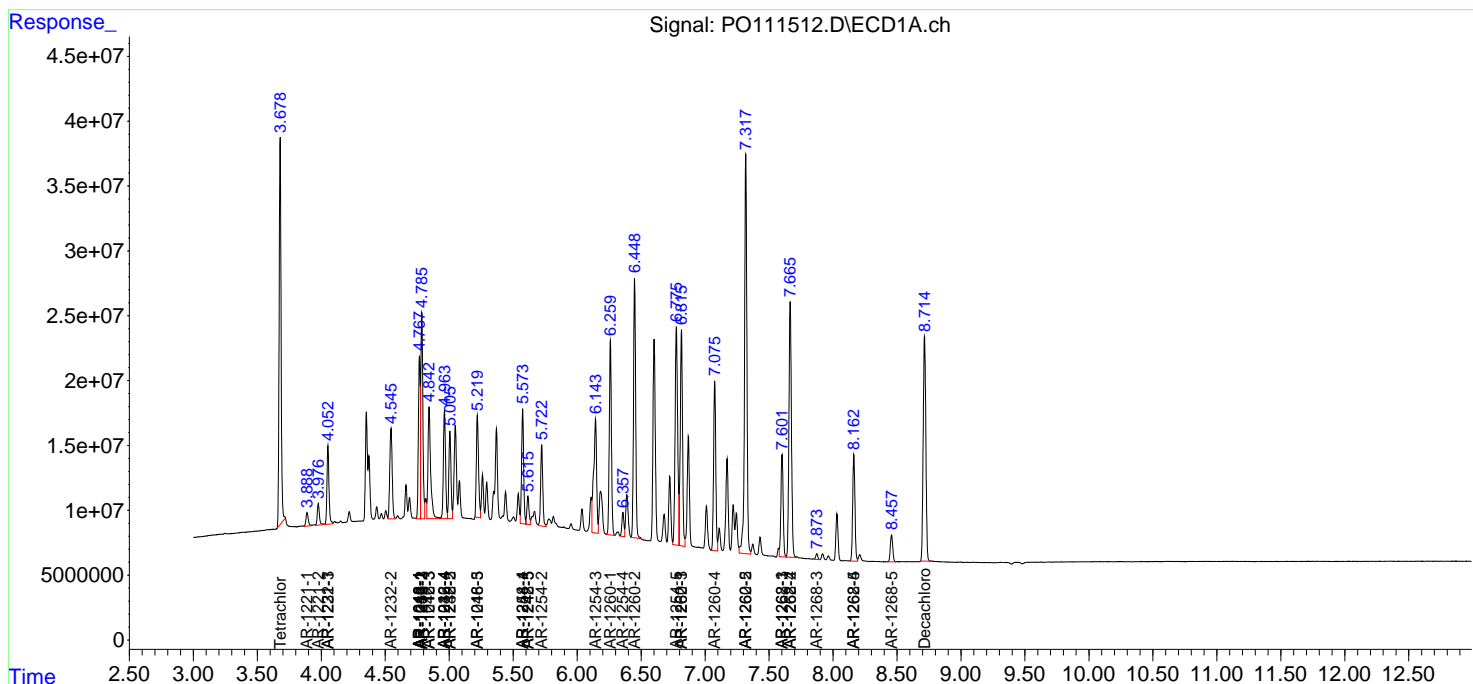
(f)=RT Delta > 1/2 Window (#)=Amounts differ by > 25% (m)=manual int.

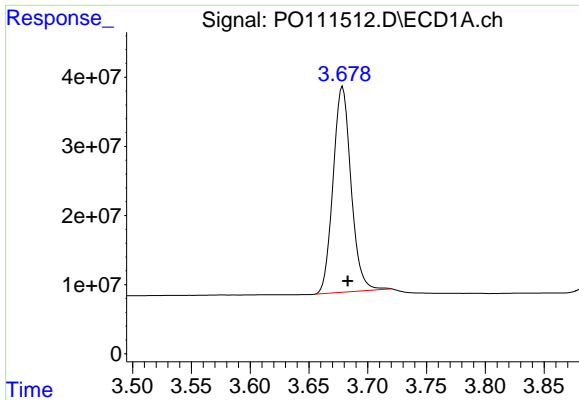
Data Path : Z:\pestpcbsrv\HPCHEM1\ECD\_O\Data\PO060625\  
 Data File : PO111512.D  
 Signal(s) : Signal #1: ECD1A.ch Signal #2: ECD2B.ch  
 Acq On : 06 Jun 2025 09:17  
 Operator : YP/AJ  
 Sample : AR1660CCC500  
 Misc :  
 ALS Vial : 3 Sample Multiplier: 1

Instrument :  
 ECD\_O  
 ClientSampleId :  
 AR1660CCC500

Integration File signal 1: autoint1.e  
 Integration File signal 2: autoint2.e  
 Quant Time: Jun 06 12:05:10 2025  
 Quant Method : Z:\pestpcbsrv\HPCHEM1\ECD\_O\methods\PO051525.M  
 Quant Title : GC EXTRACTABLES  
 QLast Update : Thu May 15 07:11:53 2025  
 Response via : Initial Calibration  
 Integrator: ChemStation

Volume Inj. : 2 µl  
 Signal #1 Phase : ZB-MR1 Signal #2 Phase: ZB-MR2  
 Signal #1 Info : 30Mx0.32mmx 0.50µ Signal #2 Info : 30M x 0.32mm x 0.25µm

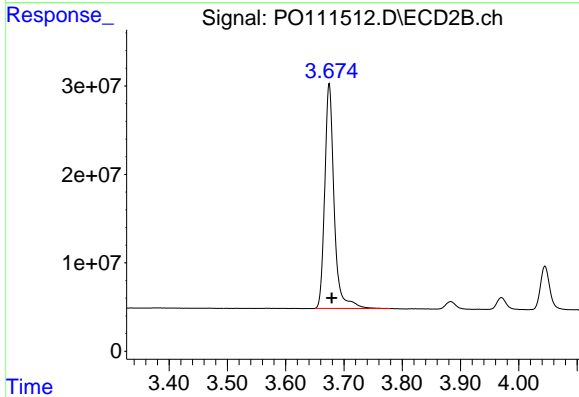




#1 Tetrachloro-m-xylene

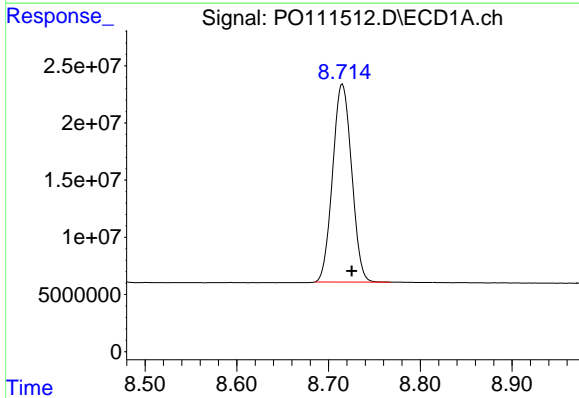
R.T.: 3.679 min  
 Delta R.T.: -0.004 min  
 Response: 316558428  
 Conc: 53.81 ng/ml

Instrument :  
 ECD\_O  
 ClientSampleId :  
 AR1660CCC500



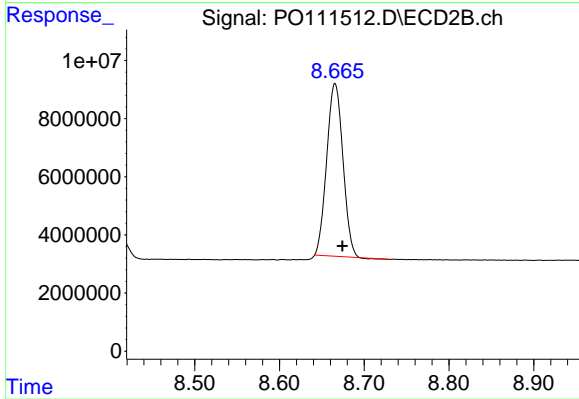
#1 Tetrachloro-m-xylene

R.T.: 3.675 min  
 Delta R.T.: -0.004 min  
 Response: 285974756  
 Conc: 52.46 ng/ml



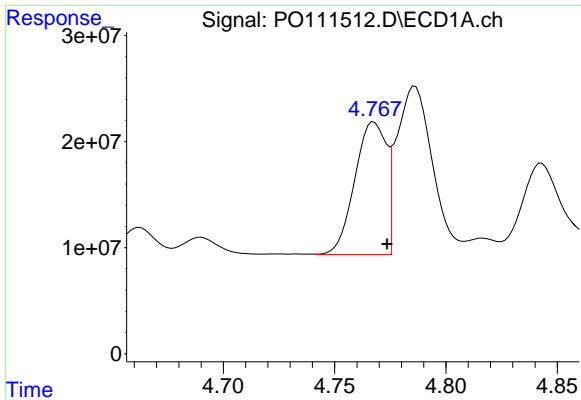
#2 Decachlorobiphenyl

R.T.: 8.715 min  
 Delta R.T.: -0.010 min  
 Response: 249124186  
 Conc: 48.25 ng/ml



#2 Decachlorobiphenyl

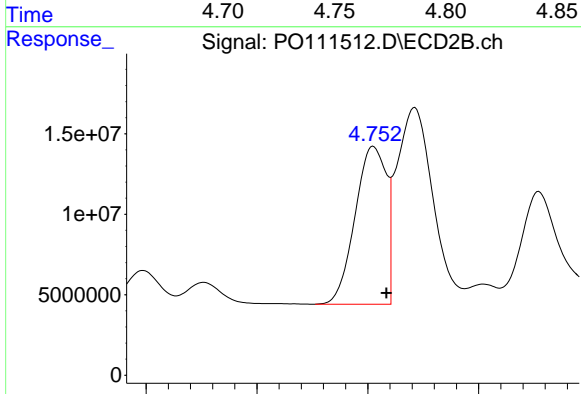
R.T.: 8.666 min  
 Delta R.T.: -0.009 min  
 Response: 78734935  
 Conc: 42.56 ng/ml



#3 AR-1016-1

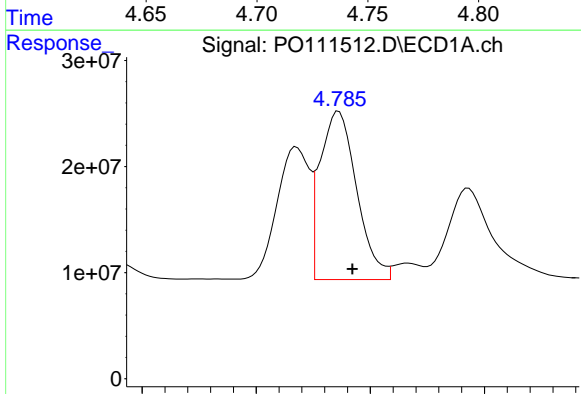
R.T.: 4.768 min  
 Delta R.T.: -0.006 min  
 Response: 123294287  
 Conc: 547.84 ng/ml

Instrument :  
 ECD\_O  
 ClientSampleId :  
 AR1660CCC500



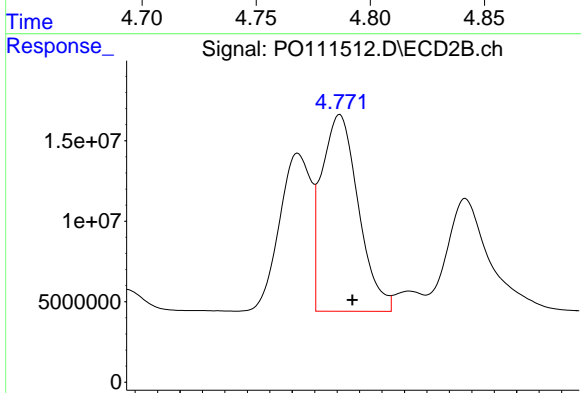
#3 AR-1016-1

R.T.: 4.753 min  
 Delta R.T.: -0.006 min  
 Response: 95852472  
 Conc: 502.04 ng/ml



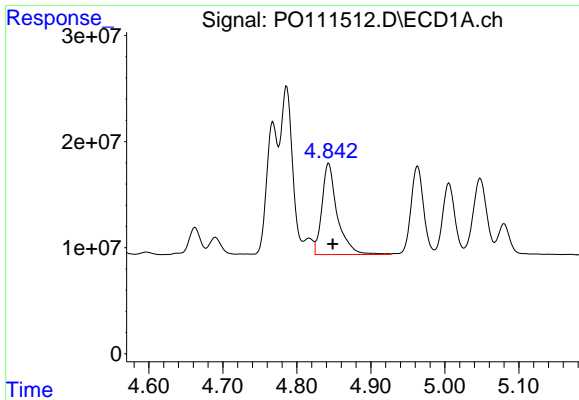
#4 AR-1016-2

R.T.: 4.786 min  
 Delta R.T.: -0.006 min  
 Response: 177524099  
 Conc: 556.62 ng/ml



#4 AR-1016-2

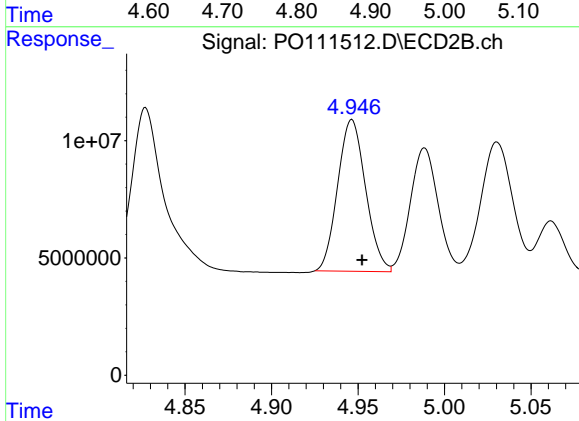
R.T.: 4.771 min  
 Delta R.T.: -0.006 min  
 Response: 139285438  
 Conc: 502.61 ng/ml



#5 AR-1016-3

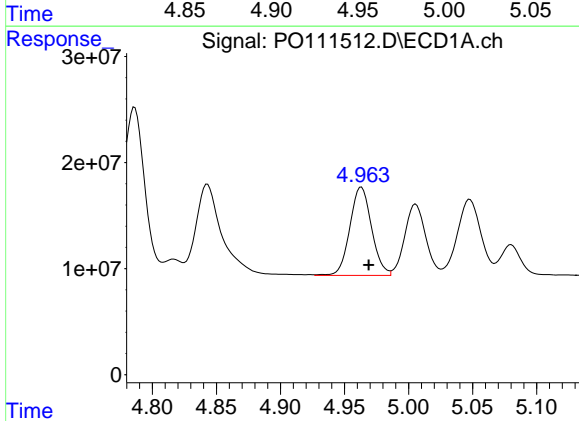
R.T.: 4.843 min  
 Delta R.T.: -0.006 min  
 Response: 124121255  
 Conc: 571.66 ng/ml

Instrument :  
 ECD\_O  
 ClientSampleId :  
 AR1660CCC500



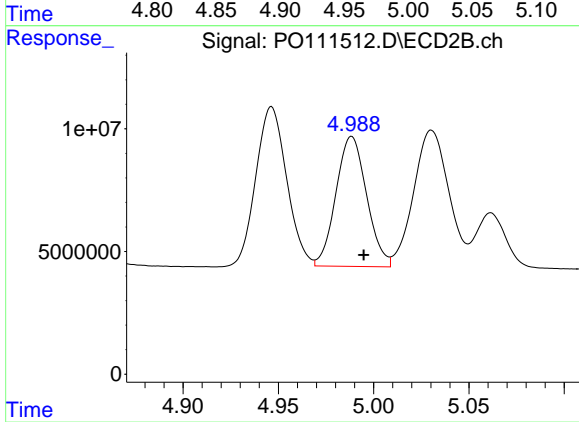
#5 AR-1016-3

R.T.: 4.946 min  
 Delta R.T.: -0.006 min  
 Response: 72415676  
 Conc: 495.74 ng/ml



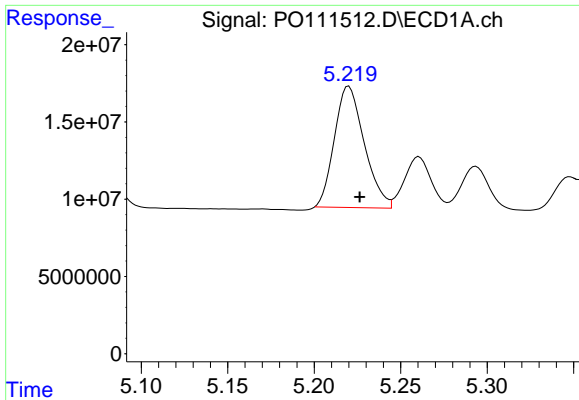
#6 AR-1016-4

R.T.: 4.963 min  
 Delta R.T.: -0.006 min  
 Response: 98341754  
 Conc: 564.70 ng/ml



#6 AR-1016-4

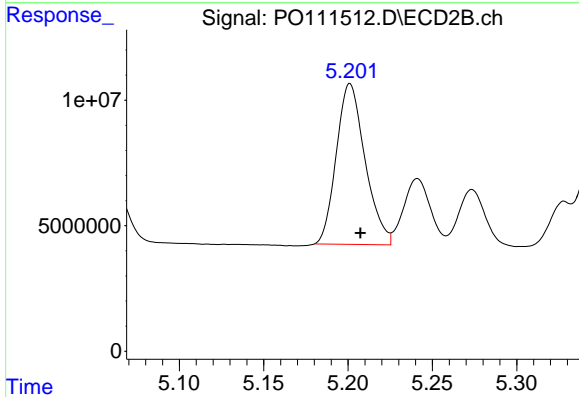
R.T.: 4.989 min  
 Delta R.T.: -0.006 min  
 Response: 59387080  
 Conc: 494.53 ng/ml



#7 AR-1016-5

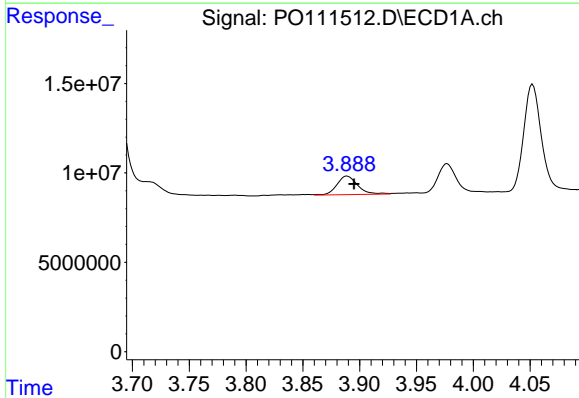
R.T.: 5.220 min  
 Delta R.T.: -0.006 min  
 Response: 94047477  
 Conc: 534.39 ng/ml

Instrument :  
 ECD\_O  
 ClientSampleId :  
 AR1660CCC500



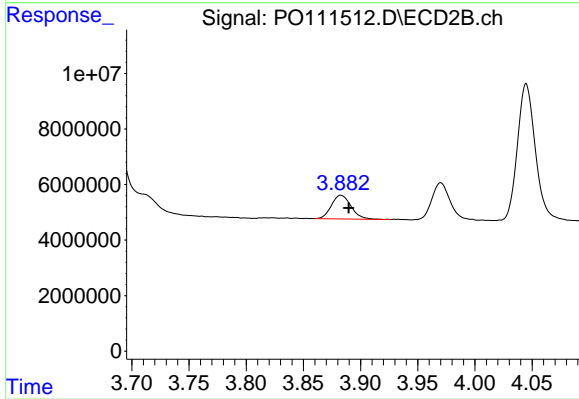
#7 AR-1016-5

R.T.: 5.201 min  
 Delta R.T.: -0.006 min  
 Response: 75976258  
 Conc: 492.07 ng/ml



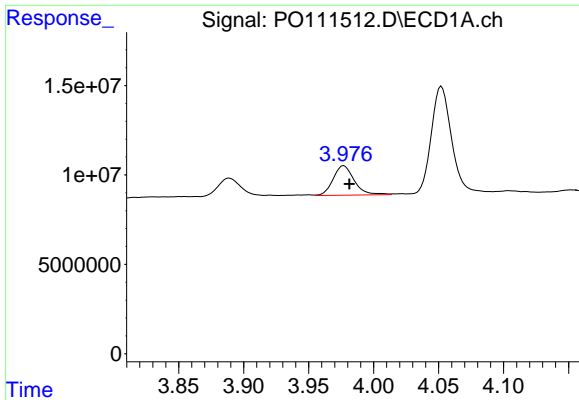
#8 AR-1221-1

R.T.: 3.889 min  
 Delta R.T.: -0.006 min  
 Response: 13253238  
 Conc: 152.15 ng/ml



#8 AR-1221-1

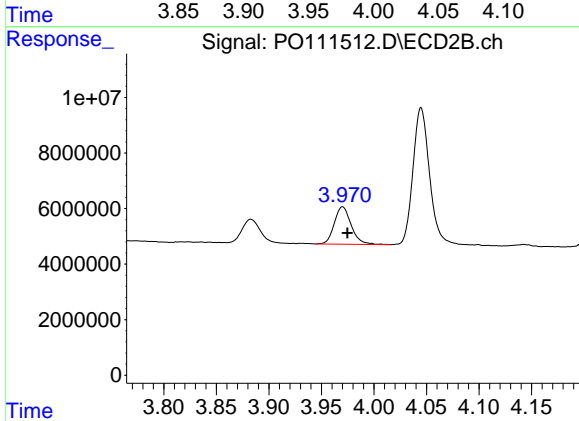
R.T.: 3.883 min  
 Delta R.T.: -0.007 min  
 Response: 10287910  
 Conc: 139.32 ng/ml



#9 AR-1221-2

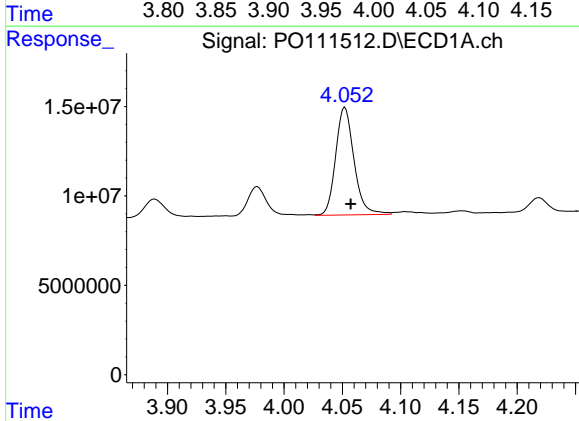
R.T.: 3.977 min  
 Delta R.T.: -0.004 min  
 Response: 18773863  
 Conc: 294.71 ng/ml

Instrument :  
 ECD\_O  
 ClientSampleId :  
 AR1660CCC500



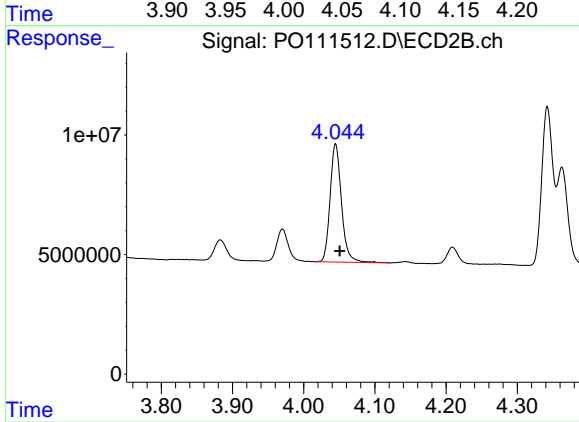
#9 AR-1221-2

R.T.: 3.970 min  
 Delta R.T.: -0.005 min  
 Response: 15120605  
 Conc: 277.88 ng/ml



#10 AR-1221-3

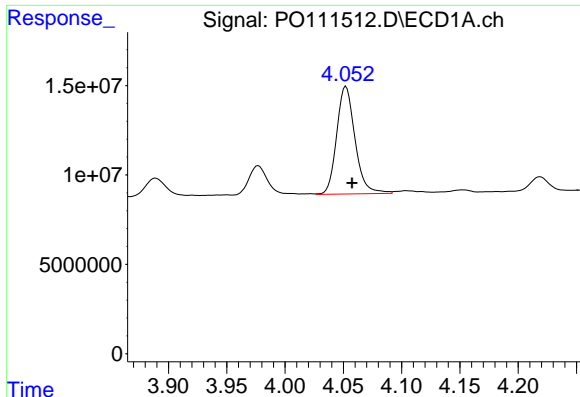
R.T.: 4.052 min  
 Delta R.T.: -0.005 min  
 Response: 66074061  
 Conc: 343.55 ng/ml



#10 AR-1221-3

R.T.: 4.045 min  
 Delta R.T.: -0.006 min  
 Response: 54971961  
 Conc: 328.98 ng/ml

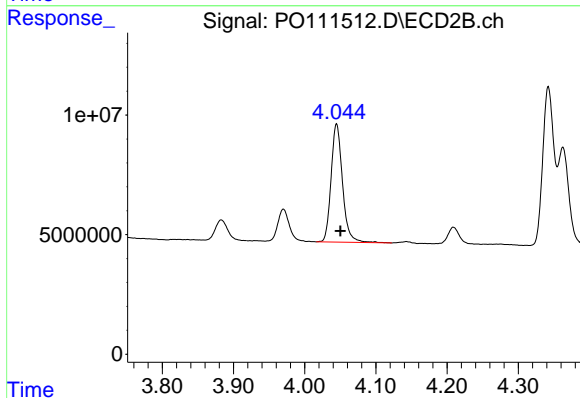




#11 AR-1232-1

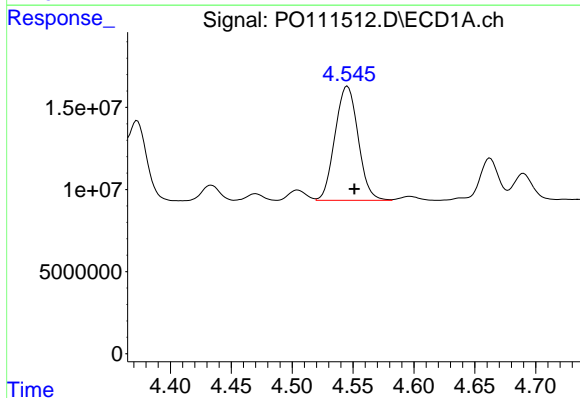
R.T.: 4.052 min  
 Delta R.T.: -0.005 min  
 Response: 66074061  
 Conc: 431.37 ng/ml

Instrument :  
 ECD\_O  
 ClientSampleId :  
 AR1660CCC500



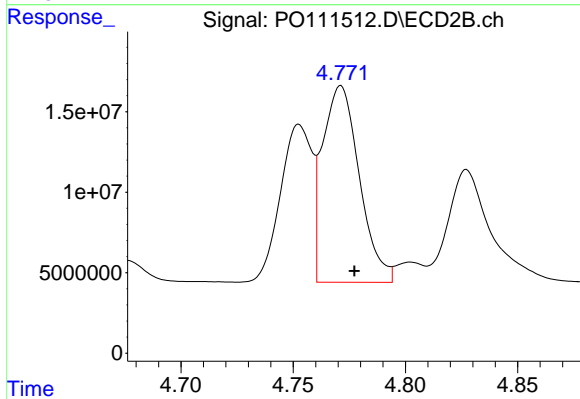
#11 AR-1232-1

R.T.: 4.045 min  
 Delta R.T.: -0.005 min  
 Response: 54971961  
 Conc: 420.93 ng/ml



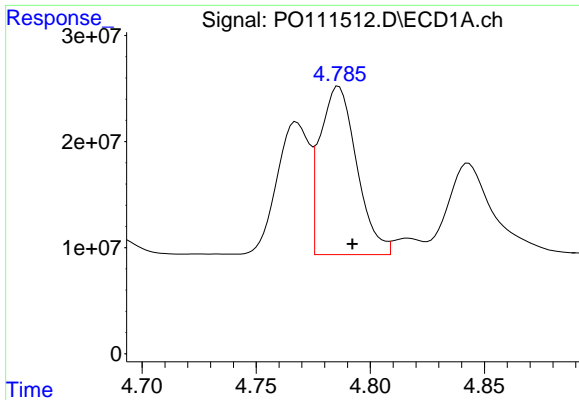
#12 AR-1232-2

R.T.: 4.545 min  
 Delta R.T.: -0.006 min  
 Response: 91847012  
 Conc: 1120.82 ng/ml



#12 AR-1232-2

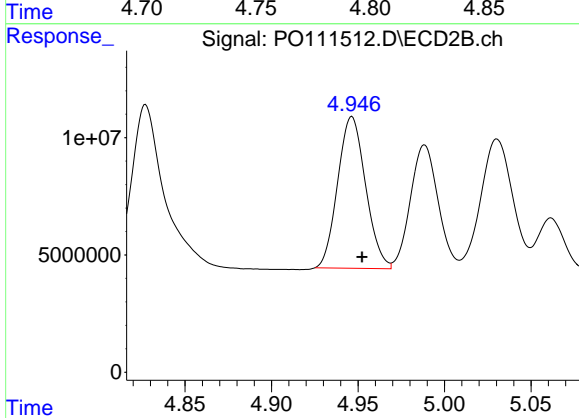
R.T.: 4.771 min  
 Delta R.T.: -0.006 min  
 Response: 139285438  
 Conc: 1061.95 ng/ml



#13 AR-1232-3

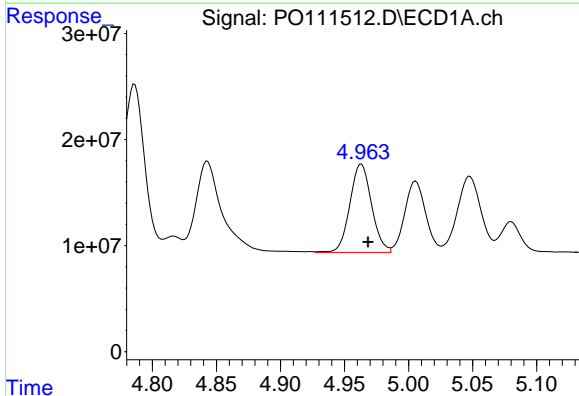
R.T.: 4.786 min  
 Delta R.T.: -0.006 min  
 Response: 177524099  
 Conc: 1160.84 ng/ml

Instrument :  
 ECD\_O  
 ClientSampleId :  
 AR1660CCC500



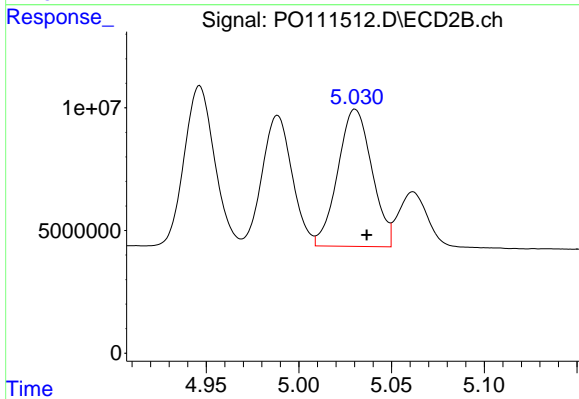
#13 AR-1232-3

R.T.: 4.946 min  
 Delta R.T.: -0.006 min  
 Response: 72415676  
 Conc: 1063.81 ng/ml



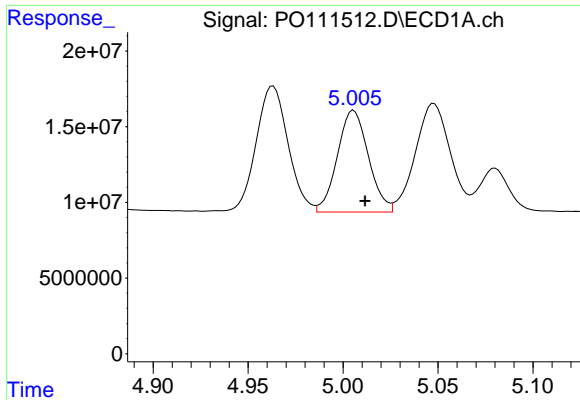
#14 AR-1232-4

R.T.: 4.963 min  
 Delta R.T.: -0.005 min  
 Response: 98341754  
 Conc: 1195.62 ng/ml



#14 AR-1232-4

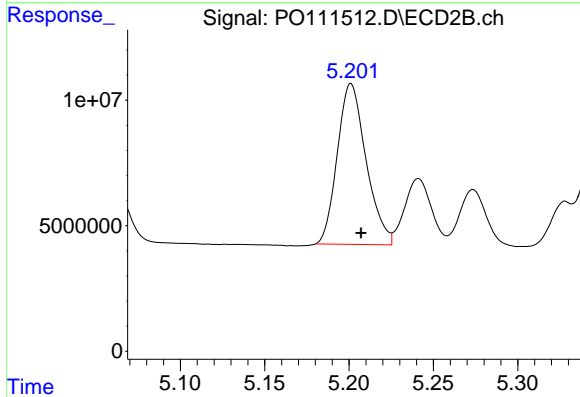
R.T.: 5.030 min  
 Delta R.T.: -0.006 min  
 Response: 71611419  
 Conc: 1161.08 ng/ml



#15 AR-1232-5

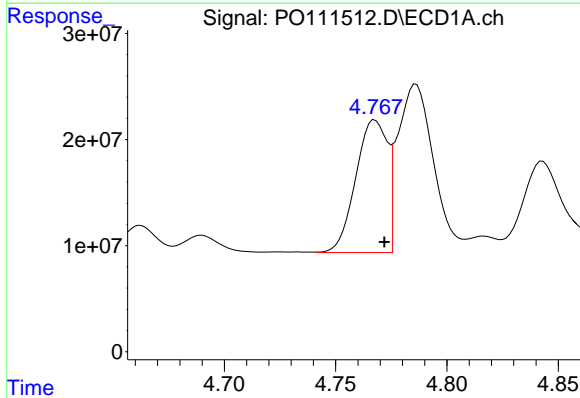
R.T.: 5.006 min  
 Delta R.T.: -0.006 min  
 Response: 76562711  
 Conc: 1411.05 ng/ml

Instrument :  
 ECD\_O  
 ClientSampleId :  
 AR1660CCC500



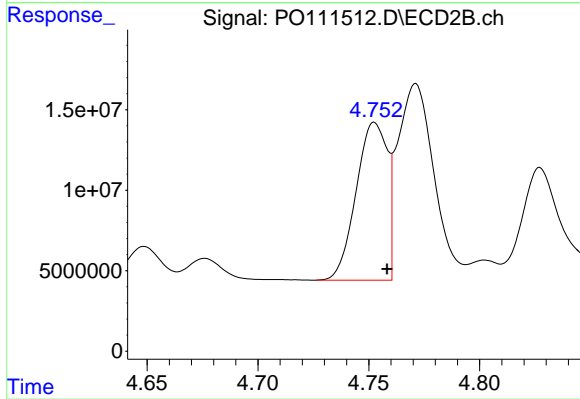
#15 AR-1232-5

R.T.: 5.201 min  
 Delta R.T.: -0.006 min  
 Response: 75976258  
 Conc: 1155.84 ng/ml



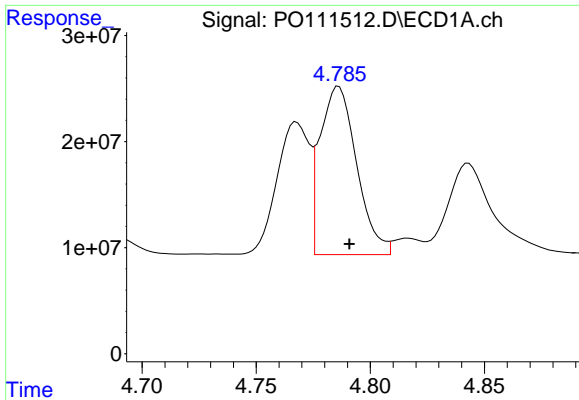
#16 AR-1242-1

R.T.: 4.768 min  
 Delta R.T.: -0.004 min  
 Response: 123294287  
 Conc: 644.85 ng/ml



#16 AR-1242-1

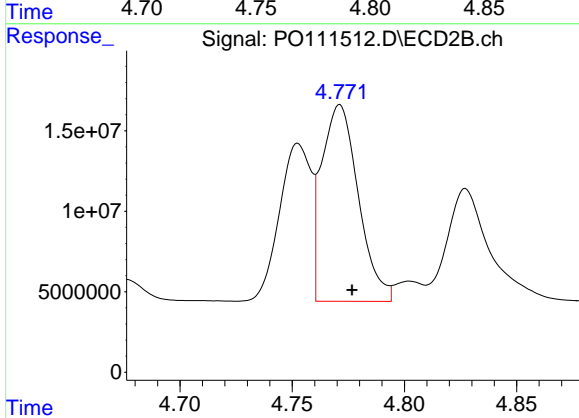
R.T.: 4.753 min  
 Delta R.T.: -0.006 min  
 Response: 95852472  
 Conc: 594.96 ng/ml



#17 AR-1242-2

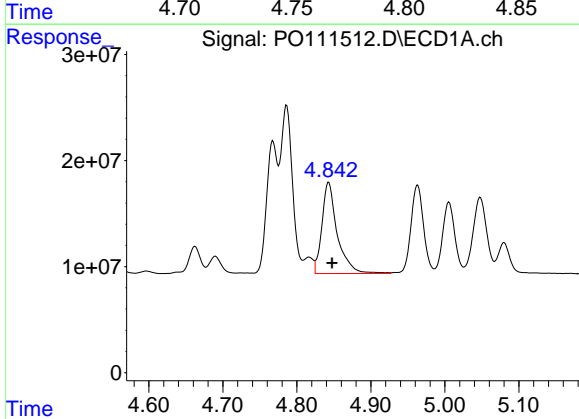
R.T.: 4.786 min  
 Delta R.T.: -0.005 min  
 Response: 177524099  
 Conc: 652.63 ng/ml

Instrument :  
 ECD\_O  
 ClientSampleId :  
 AR1660CCC500



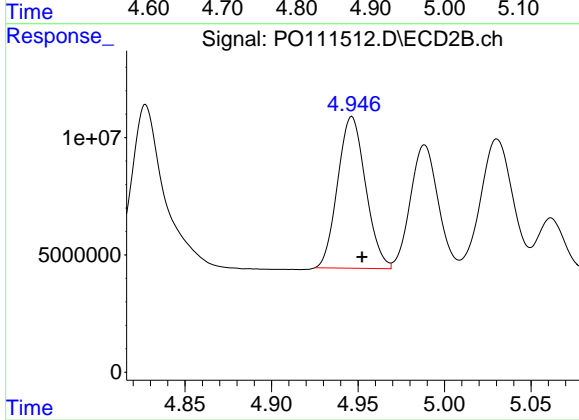
#17 AR-1242-2

R.T.: 4.771 min  
 Delta R.T.: -0.005 min  
 Response: 139285438  
 Conc: 593.70 ng/ml



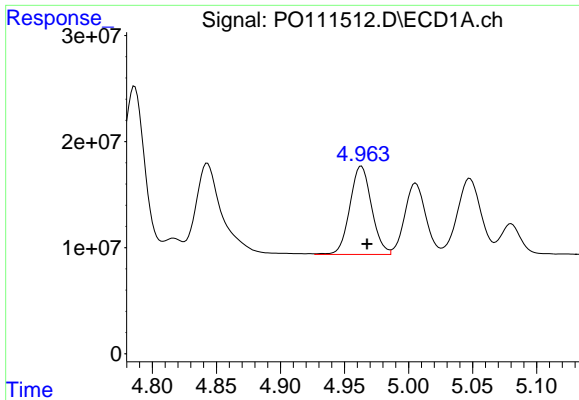
#18 AR-1242-3

R.T.: 4.843 min  
 Delta R.T.: -0.005 min  
 Response: 124121255  
 Conc: 667.37 ng/ml



#18 AR-1242-3

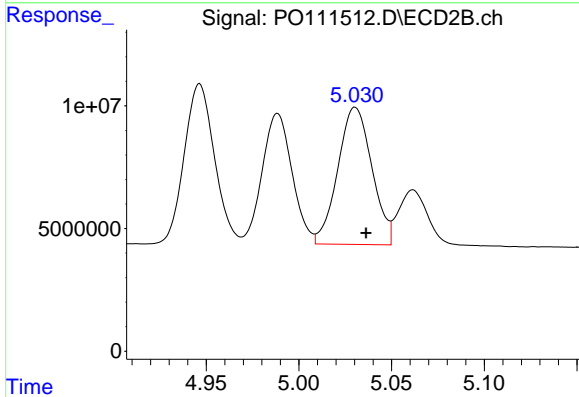
R.T.: 4.946 min  
 Delta R.T.: -0.006 min  
 Response: 72415676  
 Conc: 585.80 ng/ml



#19 AR-1242-4

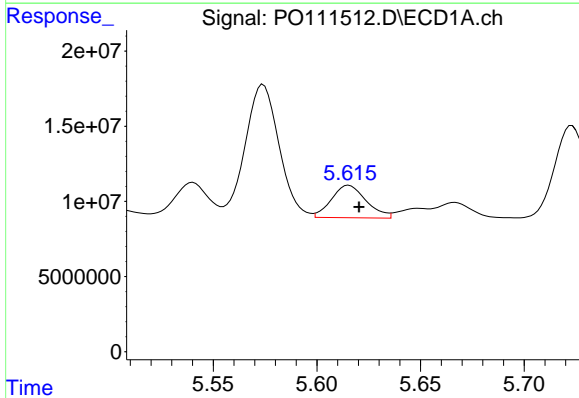
R.T.: 4.963 min  
 Delta R.T.: -0.004 min  
 Response: 98341754  
 Conc: 665.37 ng/ml

Instrument :  
 ECD\_O  
 ClientSampleId :  
 AR1660CCC500



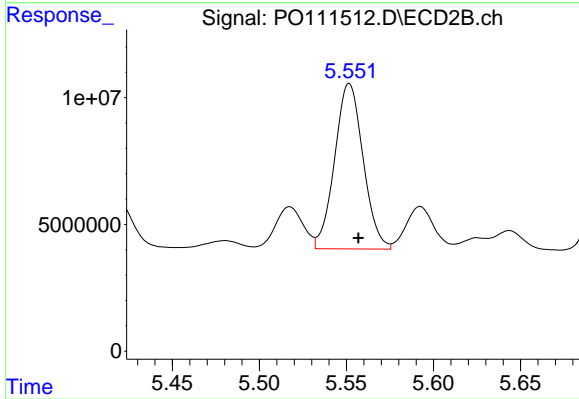
#19 AR-1242-4

R.T.: 5.030 min  
 Delta R.T.: -0.006 min  
 Response: 71611419  
 Conc: 579.31 ng/ml



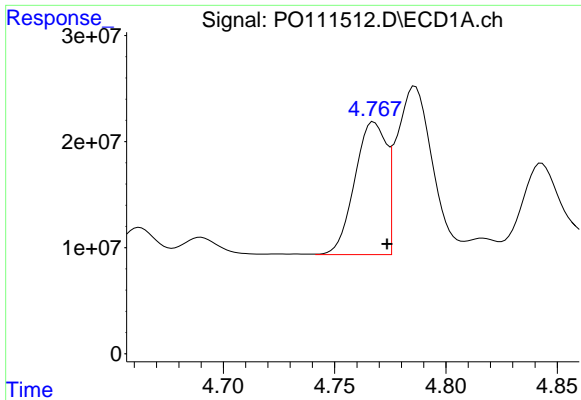
#20 AR-1242-5

R.T.: 5.615 min  
 Delta R.T.: -0.005 min  
 Response: 25173531  
 Conc: 161.84 ng/ml



#20 AR-1242-5

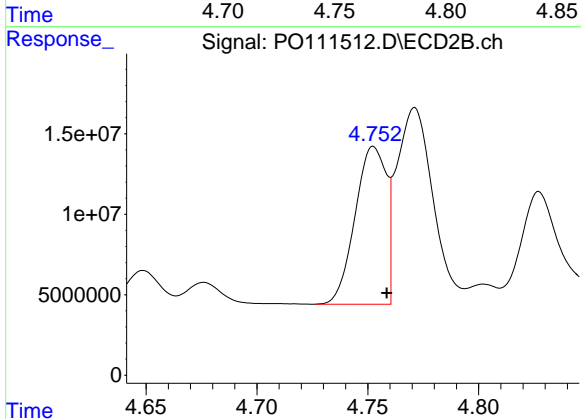
R.T.: 5.552 min  
 Delta R.T.: -0.005 min  
 Response: 74379345  
 Conc: 489.38 ng/ml



#21 AR-1248-1

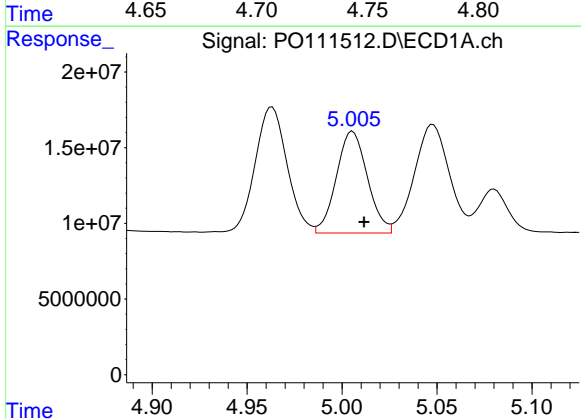
R.T.: 4.768 min  
 Delta R.T.: -0.006 min  
 Response: 123294287  
 Conc: 804.97 ng/ml

Instrument :  
 ECD\_O  
 ClientSampleId :  
 AR1660CCC500



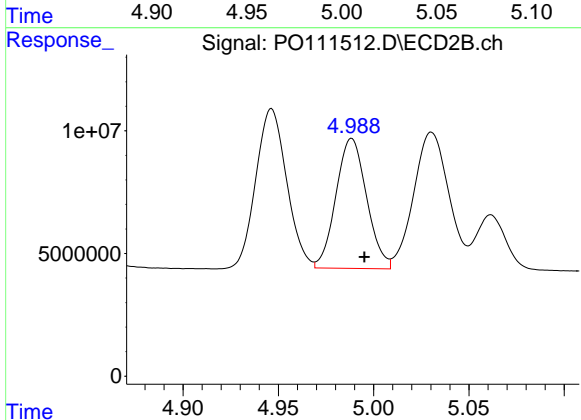
#21 AR-1248-1

R.T.: 4.753 min  
 Delta R.T.: -0.006 min  
 Response: 95852472  
 Conc: 738.87 ng/ml



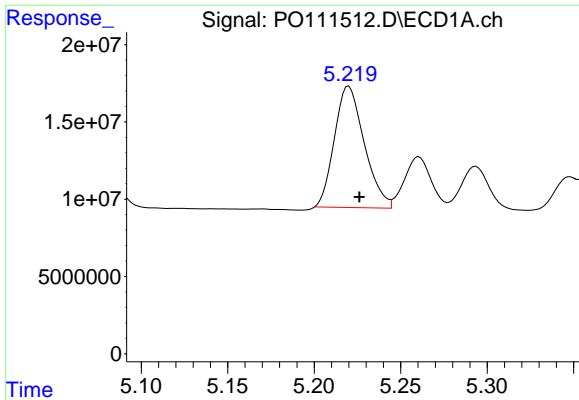
#22 AR-1248-2

R.T.: 5.006 min  
 Delta R.T.: -0.006 min  
 Response: 76562711  
 Conc: 381.83 ng/ml



#22 AR-1248-2

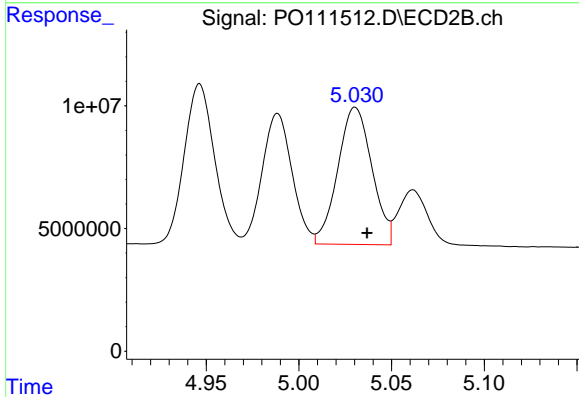
R.T.: 4.989 min  
 Delta R.T.: -0.007 min  
 Response: 59387080  
 Conc: 337.63 ng/ml



#23 AR-1248-3

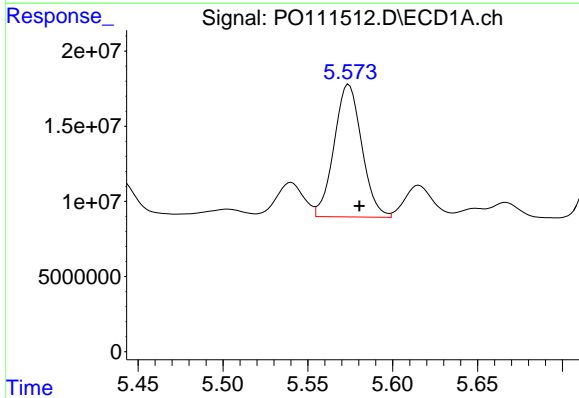
R.T.: 5.220 min  
 Delta R.T.: -0.006 min  
 Response: 94047477  
 Conc: 367.37 ng/ml

Instrument :  
 ECD\_O  
 ClientSampleId :  
 AR1660CCC500



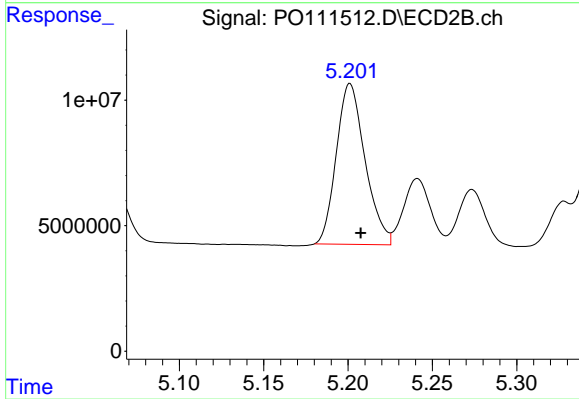
#23 AR-1248-3

R.T.: 5.030 min  
 Delta R.T.: -0.006 min  
 Response: 71611419  
 Conc: 381.69 ng/ml



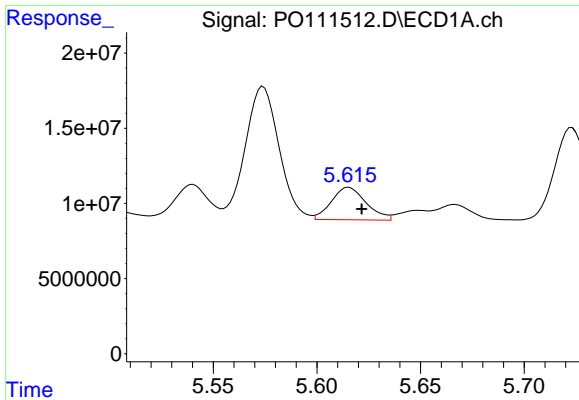
#24 AR-1248-4

R.T.: 5.574 min  
 Delta R.T.: -0.006 min  
 Response: 100093909  
 Conc: 276.36 ng/ml



#24 AR-1248-4

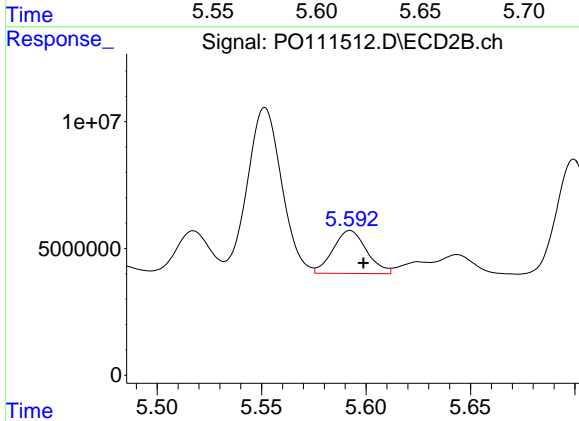
R.T.: 5.201 min  
 Delta R.T.: -0.006 min  
 Response: 75976258  
 Conc: 345.60 ng/ml



#25 AR-1248-5

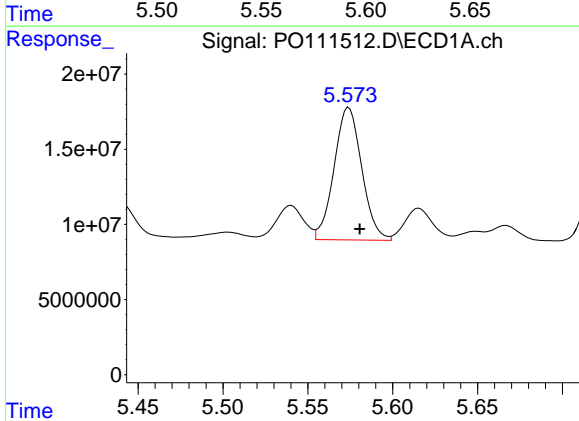
R.T.: 5.615 min  
 Delta R.T.: -0.006 min  
 Response: 25173531  
 Conc: 96.06 ng/ml

Instrument :  
 ECD\_O  
 ClientSampleId :  
 AR1660CCC500



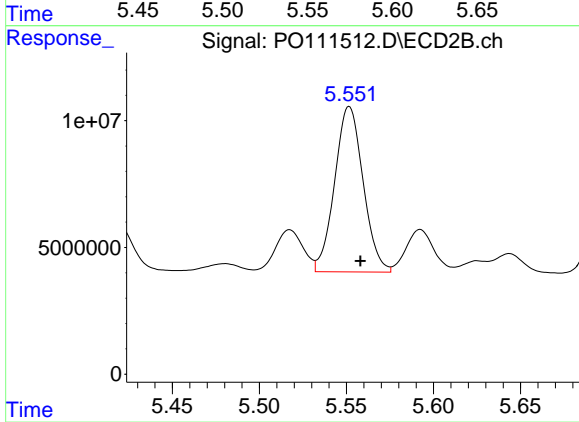
#25 AR-1248-5

R.T.: 5.592 min  
 Delta R.T.: -0.006 min  
 Response: 19001155  
 Conc: 87.03 ng/ml



#26 AR-1254-1

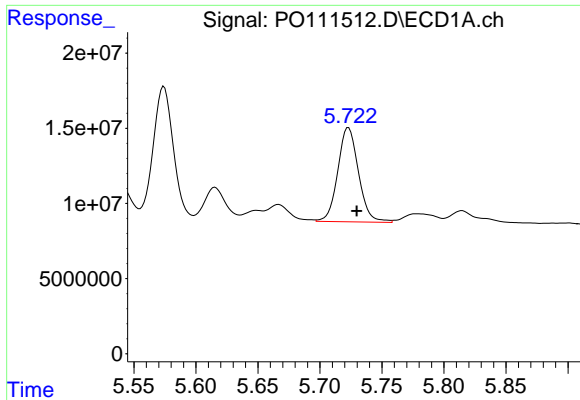
R.T.: 5.574 min  
 Delta R.T.: -0.006 min  
 Response: 100093909  
 Conc: 263.70 ng/ml



#26 AR-1254-1

R.T.: 5.552 min  
 Delta R.T.: -0.006 min  
 Response: 74379345  
 Conc: 229.54 ng/ml

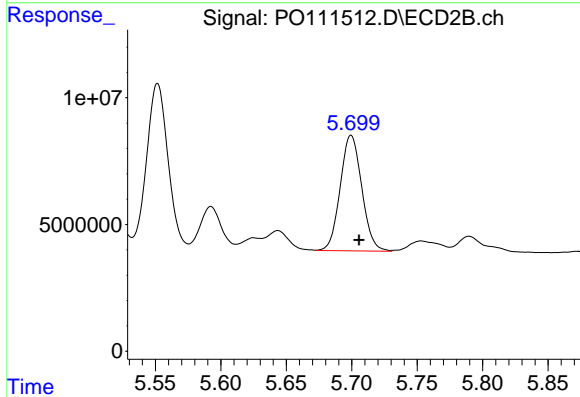




#27 AR-1254-2

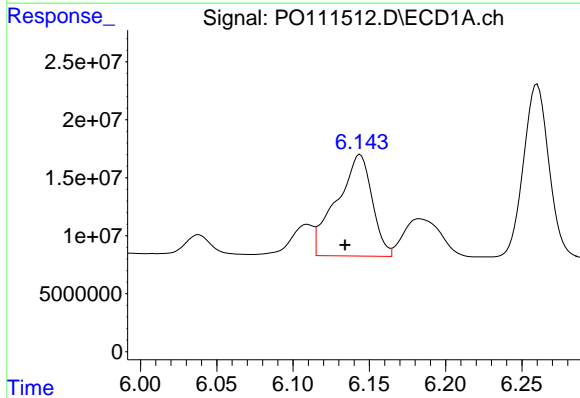
R.T.: 5.723 min  
 Delta R.T.: -0.007 min  
 Response: 72934319  
 Conc: 223.19 ng/ml

Instrument :  
 ECD\_O  
 ClientSampleId :  
 AR1660CCC500



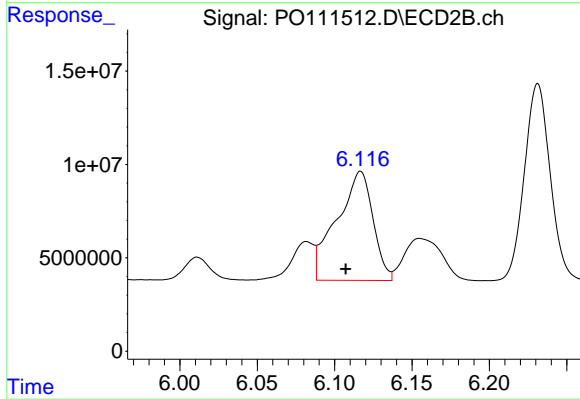
#27 AR-1254-2

R.T.: 5.700 min  
 Delta R.T.: -0.006 min  
 Response: 52307217  
 Conc: 184.67 ng/ml



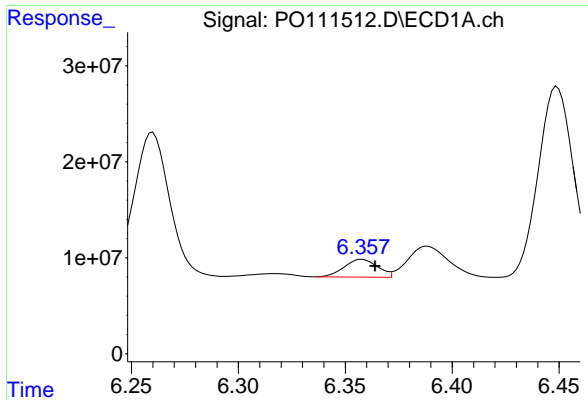
#28 AR-1254-3

R.T.: 6.144 min  
 Delta R.T.: 0.010 min  
 Response: 141329298  
 Conc: 268.61 ng/ml



#28 AR-1254-3

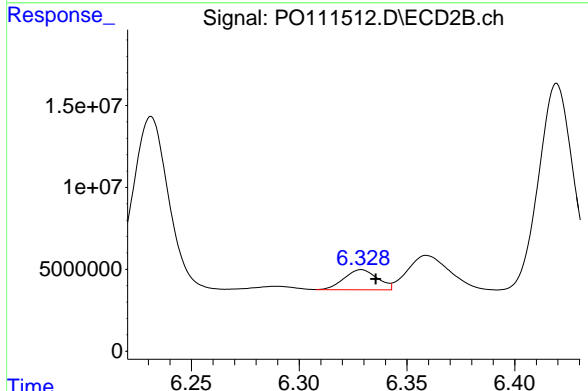
R.T.: 6.117 min  
 Delta R.T.: 0.010 min  
 Response: 95231470  
 Conc: 220.72 ng/ml



#29 AR-1254-4

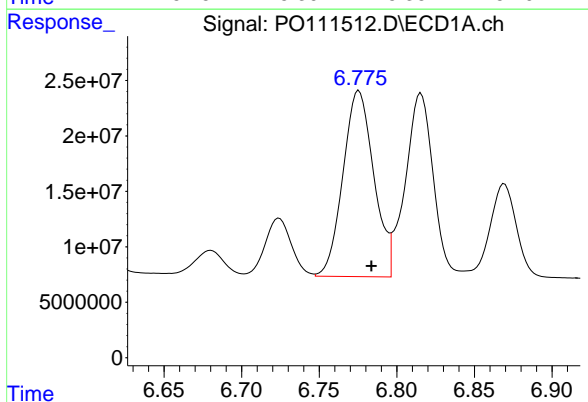
R.T.: 6.358 min  
 Delta R.T.: -0.006 min  
 Response: 20011584  
 Conc: 59.54 ng/ml

Instrument :  
 ECD\_O  
 ClientSampleId :  
 AR1660CCC500



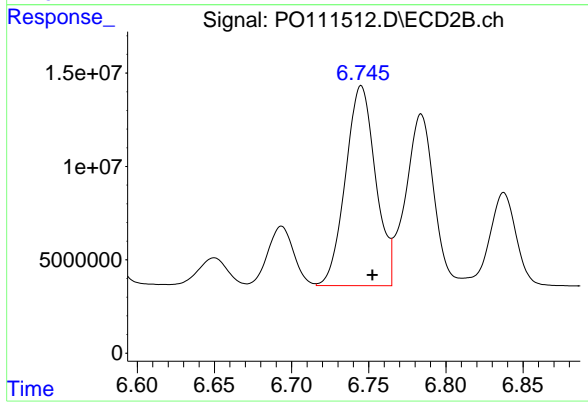
#29 AR-1254-4

R.T.: 6.329 min  
 Delta R.T.: -0.007 min  
 Response: 13167410  
 Conc: 53.24 ng/ml



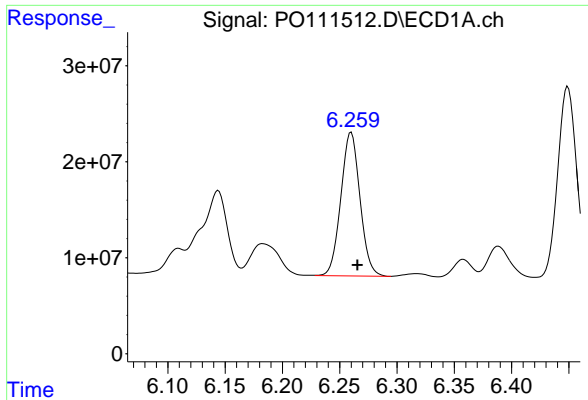
#30 AR-1254-5

R.T.: 6.776 min  
 Delta R.T.: -0.008 min  
 Response: 231559292  
 Conc: 488.05 ng/ml



#30 AR-1254-5

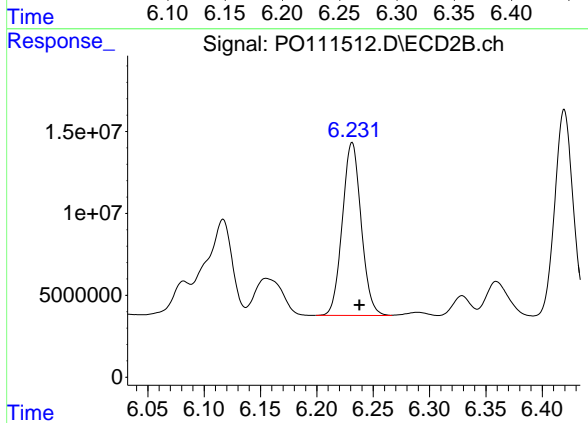
R.T.: 6.745 min  
 Delta R.T.: -0.007 min  
 Response: 145400936  
 Conc: 420.31 ng/ml



#31 AR-1260-1

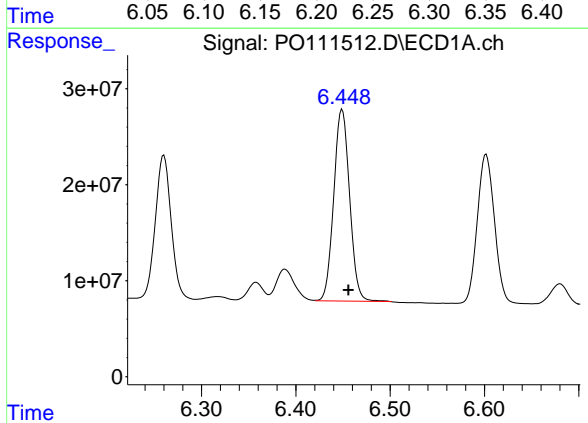
R.T.: 6.260 min  
 Delta R.T.: -0.005 min  
 Response: 174348159  
 Conc: 571.69 ng/ml

Instrument :  
 ECD\_O  
 ClientSampleId :  
 AR1660CCC500



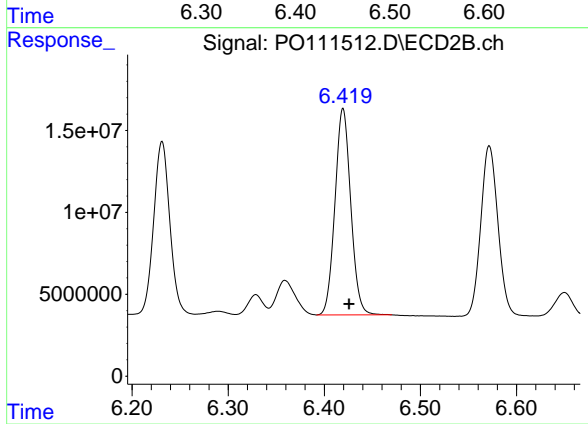
#31 AR-1260-1

R.T.: 6.231 min  
 Delta R.T.: -0.006 min  
 Response: 122879741  
 Conc: 491.74 ng/ml



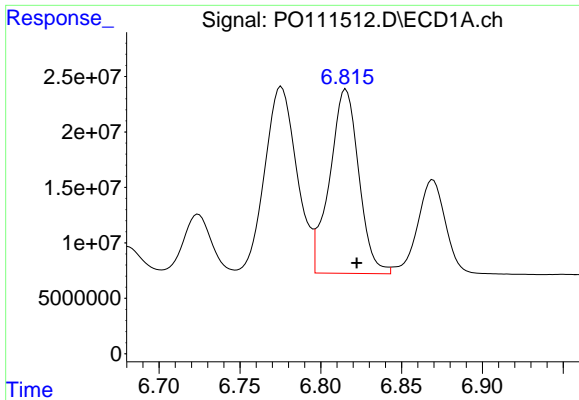
#32 AR-1260-2

R.T.: 6.449 min  
 Delta R.T.: -0.007 min  
 Response: 232878094  
 Conc: 608.12 ng/ml



#32 AR-1260-2

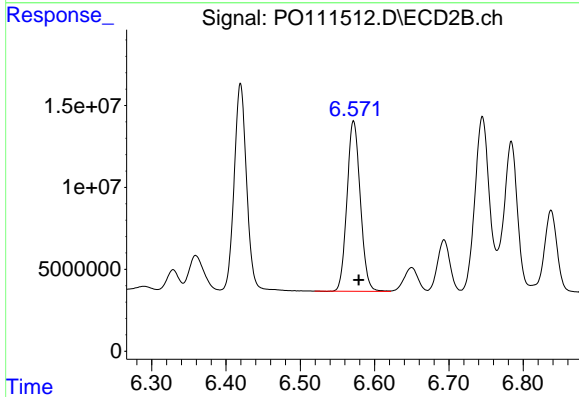
R.T.: 6.420 min  
 Delta R.T.: -0.006 min  
 Response: 143835789  
 Conc: 488.76 ng/ml



#33 AR-1260-3

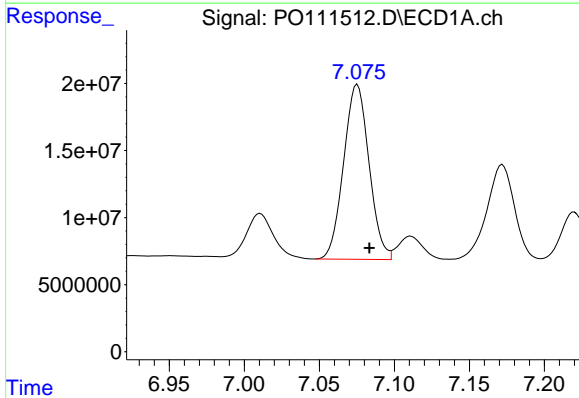
R.T.: 6.816 min  
 Delta R.T.: -0.007 min  
 Response: 208193622  
 Conc: 597.25 ng/ml

Instrument :  
 ECD\_O  
 ClientSampleId :  
 AR1660CCC500



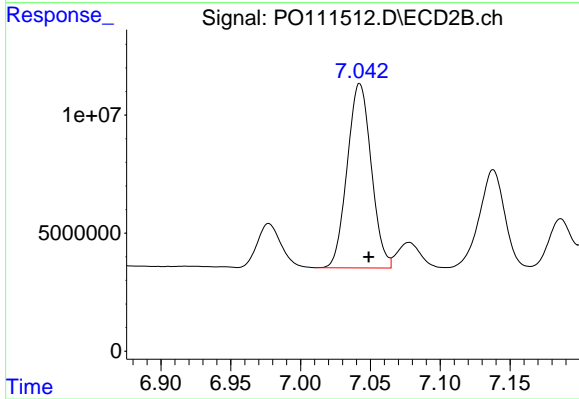
#33 AR-1260-3

R.T.: 6.572 min  
 Delta R.T.: -0.007 min  
 Response: 129673571  
 Conc: 452.27 ng/ml



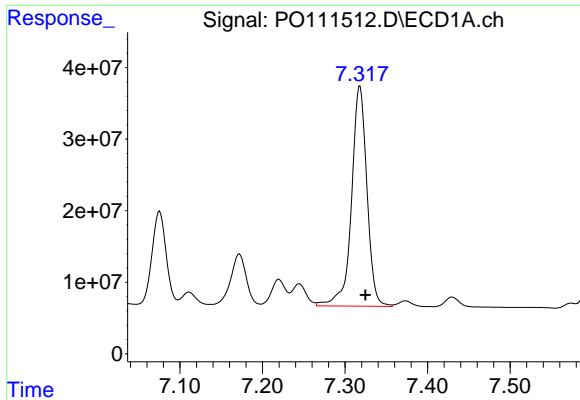
#34 AR-1260-4

R.T.: 7.075 min  
 Delta R.T.: -0.008 min  
 Response: 153834860  
 Conc: 549.49 ng/ml



#34 AR-1260-4

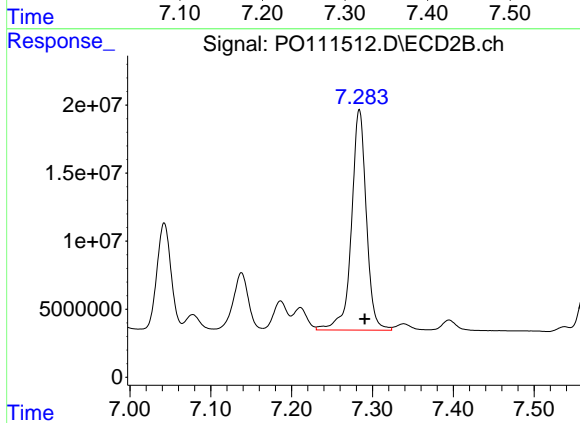
R.T.: 7.042 min  
 Delta R.T.: -0.007 min  
 Response: 93599504  
 Conc: 466.22 ng/ml



#35 AR-1260-5

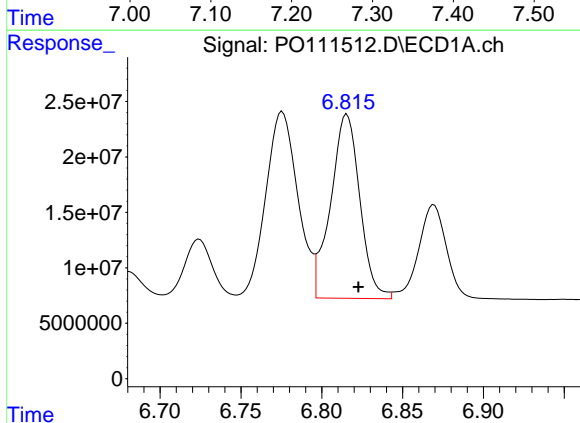
R.T.: 7.318 min  
 Delta R.T.: -0.007 min  
 Response: 399761315  
 Conc: 555.30 ng/ml

Instrument :  
 ECD\_O  
 ClientSampleId :  
 AR1660CCC500



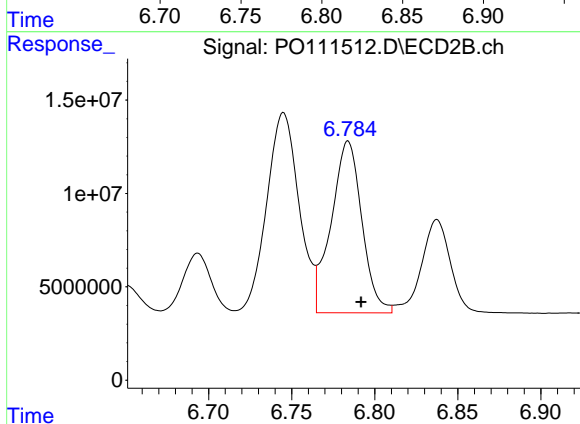
#35 AR-1260-5

R.T.: 7.284 min  
 Delta R.T.: -0.006 min  
 Response: 207703912  
 Conc: 451.92 ng/ml



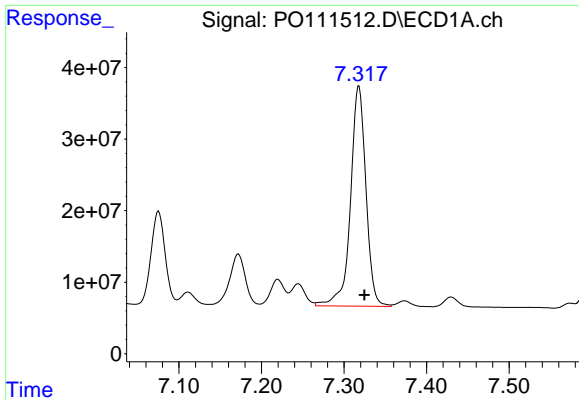
#36 AR-1262-1

R.T.: 6.816 min  
 Delta R.T.: -0.007 min  
 Response: 208193622  
 Conc: 427.80 ng/ml



#36 AR-1262-1

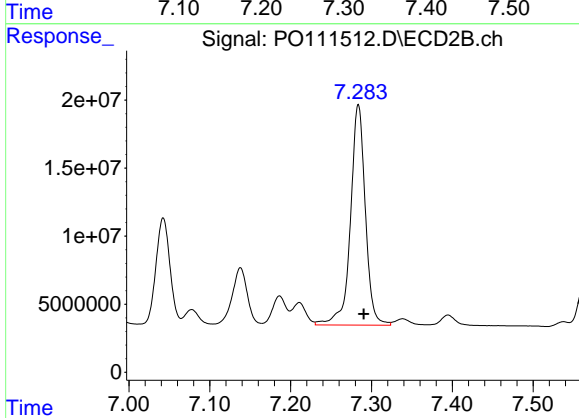
R.T.: 6.784 min  
 Delta R.T.: -0.008 min  
 Response: 118357376  
 Conc: 347.31 ng/ml



#37 AR-1262-2

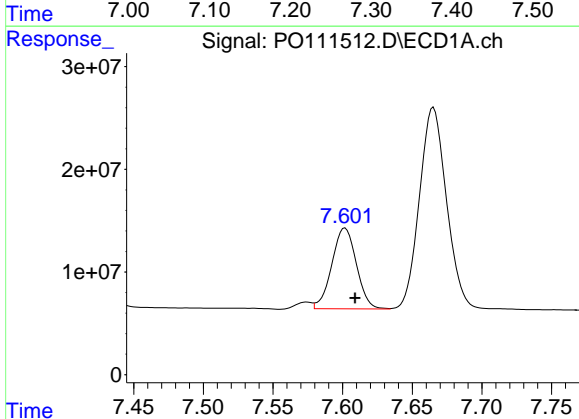
R.T.: 7.318 min  
 Delta R.T.: -0.007 min  
 Response: 399761315  
 Conc: 494.45 ng/ml

Instrument :  
 ECD\_O  
 ClientSampleId :  
 AR1660CCC500



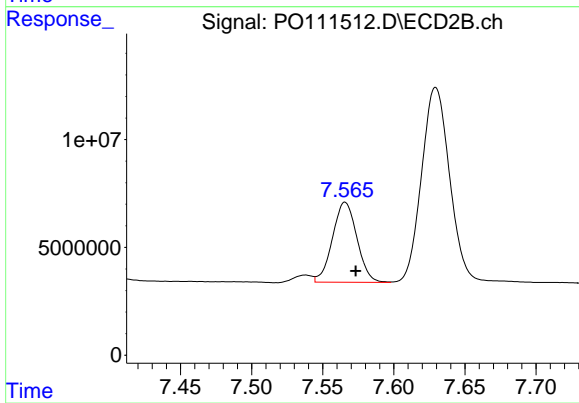
#37 AR-1262-2

R.T.: 7.284 min  
 Delta R.T.: -0.007 min  
 Response: 207703912  
 Conc: 413.04 ng/ml



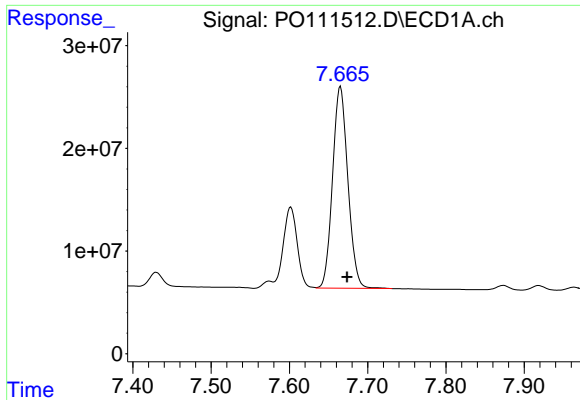
#38 AR-1262-3

R.T.: 7.602 min  
 Delta R.T.: -0.007 min  
 Response: 96996941  
 Conc: 286.75 ng/ml



#38 AR-1262-3

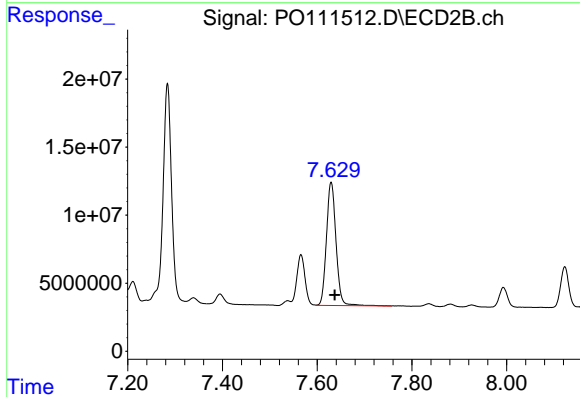
R.T.: 7.566 min  
 Delta R.T.: -0.007 min  
 Response: 44539600  
 Conc: 237.37 ng/ml



#39 AR-1262-4

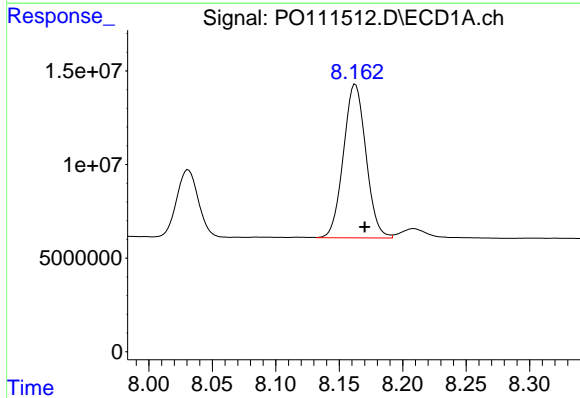
R.T.: 7.665 min  
 Delta R.T.: -0.008 min  
 Response: 266999487  
 Conc: 452.22 ng/ml

Instrument :  
 ECD\_O  
 ClientSampleId :  
 AR1660CCC500



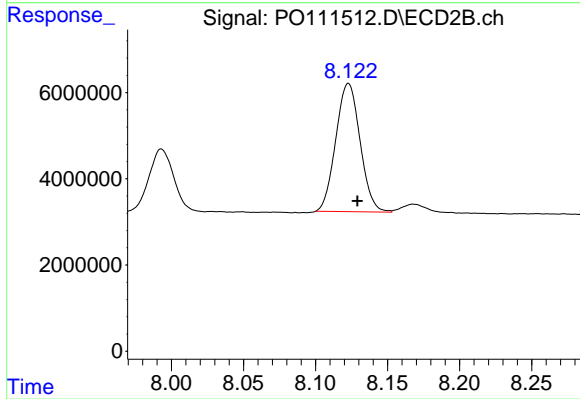
#39 AR-1262-4

R.T.: 7.629 min  
 Delta R.T.: -0.008 min  
 Response: 126692233  
 Conc: 383.65 ng/ml



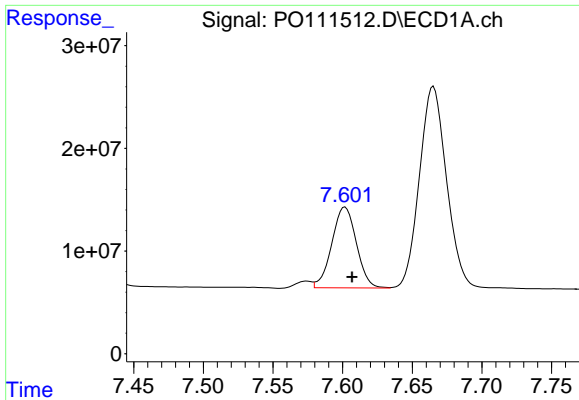
#40 AR-1262-5

R.T.: 8.163 min  
 Delta R.T.: -0.007 min  
 Response: 101220260  
 Conc: 354.89 ng/ml



#40 AR-1262-5

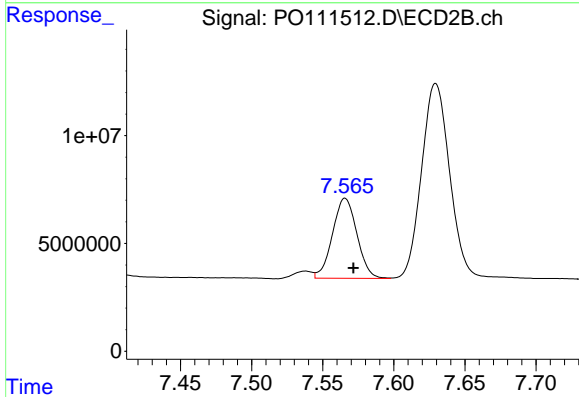
R.T.: 8.123 min  
 Delta R.T.: -0.006 min  
 Response: 34928772  
 Conc: 311.02 ng/ml



#41 AR-1268-1

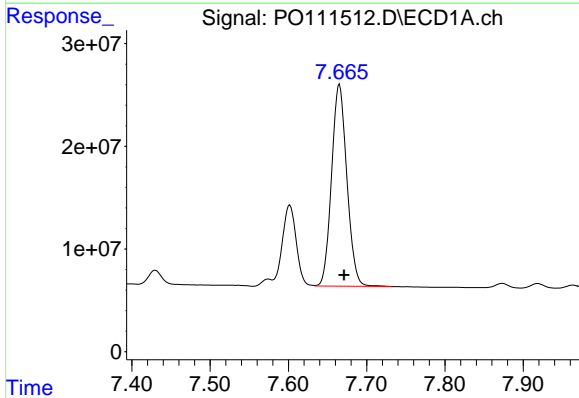
R.T.: 7.602 min  
 Delta R.T.: -0.005 min  
 Response: 96996941  
 Conc: 100.04 ng/ml

Instrument :  
 ECD\_O  
 ClientSampleId :  
 AR1660CCC500



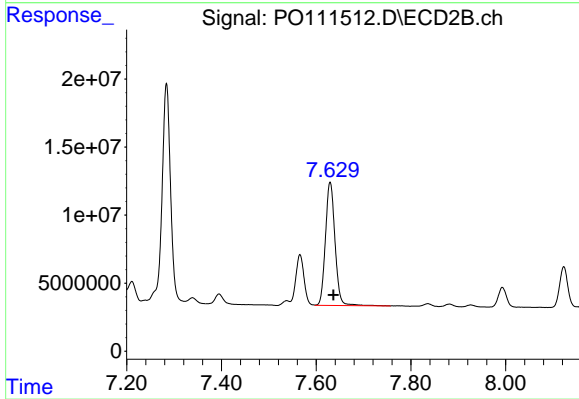
#41 AR-1268-1

R.T.: 7.566 min  
 Delta R.T.: -0.006 min  
 Response: 44539600  
 Conc: 84.02 ng/ml



#42 AR-1268-2

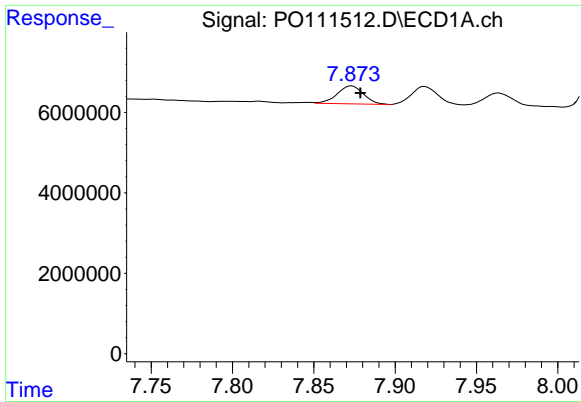
R.T.: 7.665 min  
 Delta R.T.: -0.006 min  
 Response: 266999487  
 Conc: 299.16 ng/ml



#42 AR-1268-2

R.T.: 7.629 min  
 Delta R.T.: -0.007 min  
 Response: 126692233  
 Conc: 262.66 ng/ml

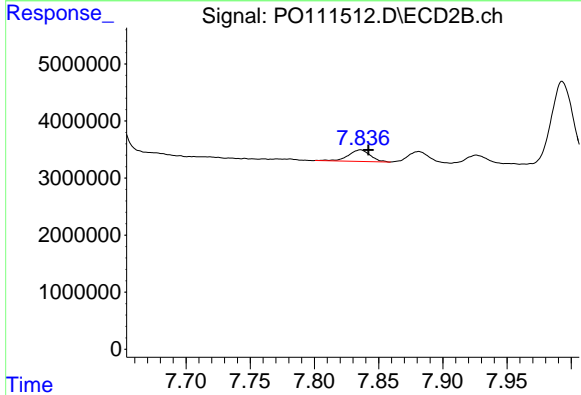




#43 AR-1268-3

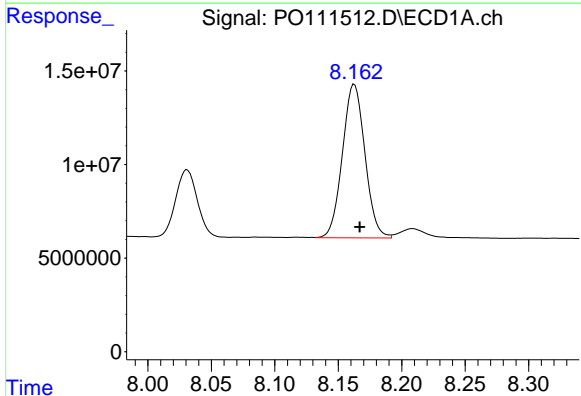
R.T.: 7.873 min  
 Delta R.T.: -0.005 min  
 Response: 5039088  
 Conc: 6.64 ng/ml

Instrument :  
 ECD\_O  
 ClientSampleId :  
 AR1660CCC500



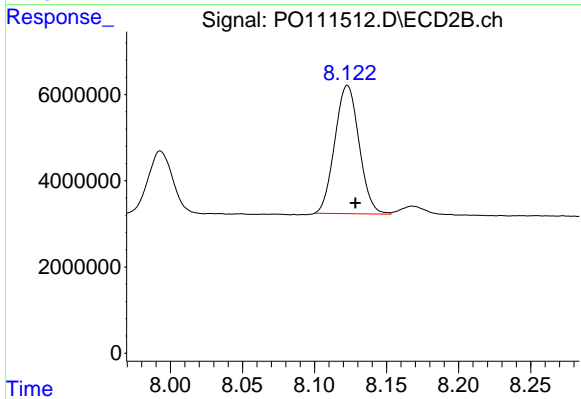
#43 AR-1268-3

R.T.: 7.836 min  
 Delta R.T.: -0.006 min  
 Response: 2374135  
 Conc: 6.81 ng/ml



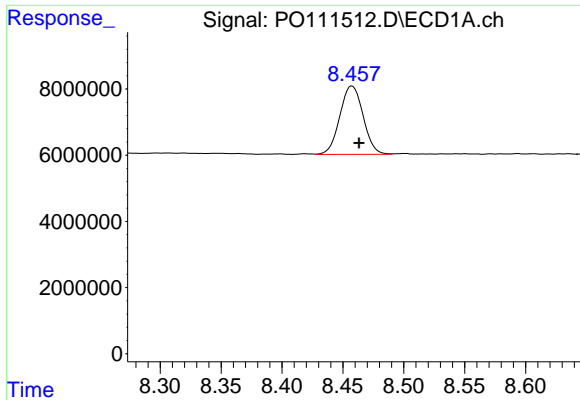
#44 AR-1268-4

R.T.: 8.163 min  
 Delta R.T.: -0.004 min  
 Response: 101220260  
 Conc: 309.94 ng/ml



#44 AR-1268-4

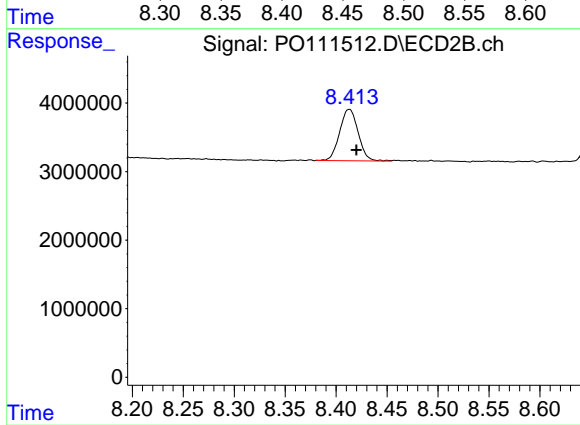
R.T.: 8.123 min  
 Delta R.T.: -0.006 min  
 Response: 34928772  
 Conc: 274.45 ng/ml



#45 AR-1268-5

R.T.: 8.458 min  
Delta R.T.: -0.006 min  
Response: 27525516  
Conc: 12.75 ng/ml

Instrument :  
ECD\_O  
ClientSampleId :  
AR1660CCC500



#45 AR-1268-5

R.T.: 8.413 min  
Delta R.T.: -0.007 min  
Response: 9512553  
Conc: 12.64 ng/ml