

Data Path : Z:\pestpcbsrv\HPCHEM1\ECD_0\Data\P0060721\
 Data File : P0078514.D
 Signal(s) : Signal #1: ECD1A.CH Signal #2: ECD2B.CH
 Acq On : 07 Jun 2021 17:48
 Operator : DD\AJ
 Sample : AR1242ICC750
 Misc :
 ALS Vial : 19 Sample Multiplier: 1

Instrument :
 ECD_0
 ClientSampleId :
 AR1242ICC750

Integration File signal 1: autoint1.e
 Integration File signal 2: autoint2.e
 Quant Time: Jun 08 03:39:21 2021
 Quant Method : Z:\pestpcbsrv\HPCHEM1\ECD_0\methods\P0060721.M
 Quant Title : GC EXTRACTABLES
 QLast Update : Tue Jun 08 03:38:40 2021
 Response via : Initial Calibration
 Integrator: ChemStation 6890 Scale Mode: Small noise peaks clipped

Volume Inj. : 2 µl
 Signal #1 Phase : ZB-MR1 Signal #2 Phase: ZB-MR2
 Signal #1 Info : 30Mx0.32mmx 0.50µ Signal #2 Info : 30M x 0.32mm x 0.25µm

Compound	RT#1	RT#2	Resp#1	Resp#2	ng/ml	ng/ml

System Monitoring Compounds						
1) SA Tetrachlo...	4.338	3.614	5684932	2443706	74.215	73.473
2) SA Decachlor...	9.948	8.800	3020353	1841347	73.462	71.280
Target Compounds						
16) L4 AR-1242-1	5.634	4.842	1317781	598839	728.135	712.803
17) L4 AR-1242-2	5.656	4.861	1980924	878272	729.121	714.604
18) L4 AR-1242-3	5.719	5.049	1223410	465262	737.008	723.170
19) L4 AR-1242-4	5.824	5.144	979250	472265	739.275	711.740
20) L4 AR-1242-5	6.595	5.699	988866	599729	731.816	713.100

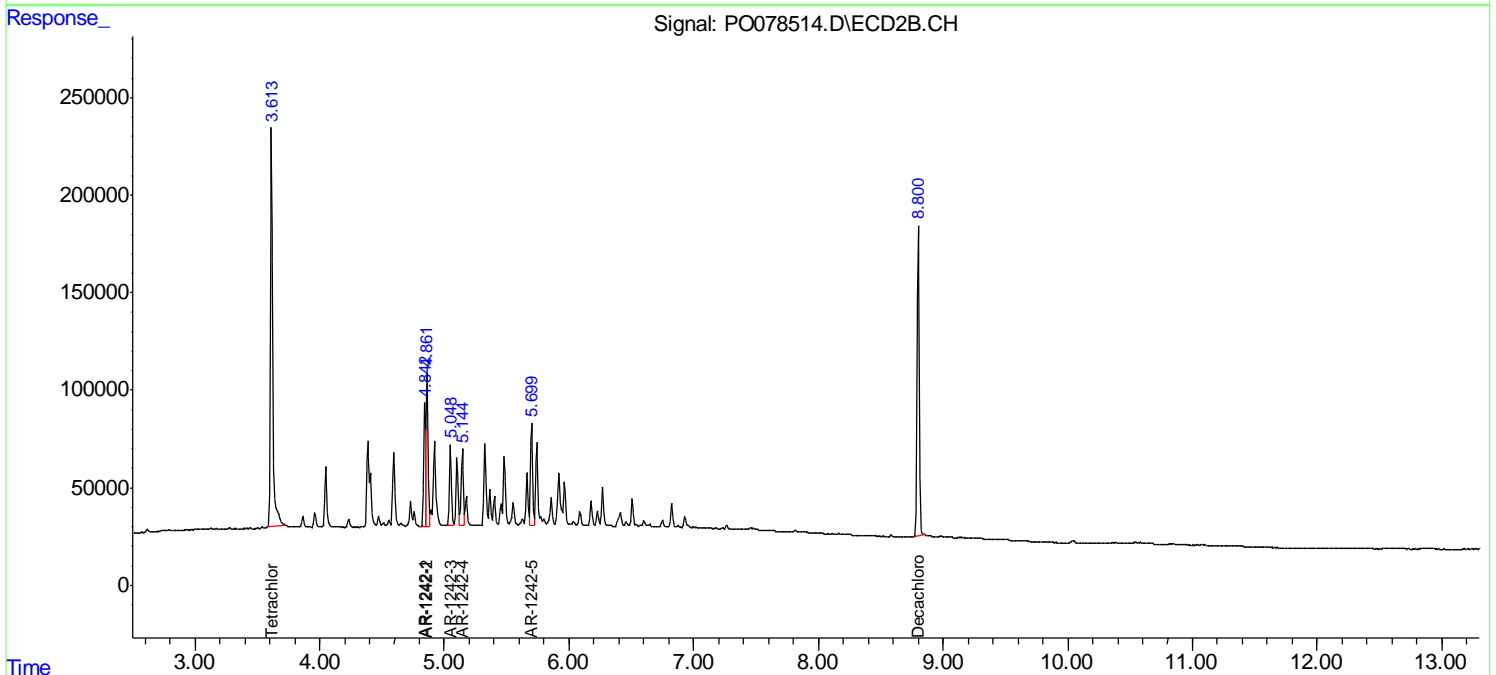
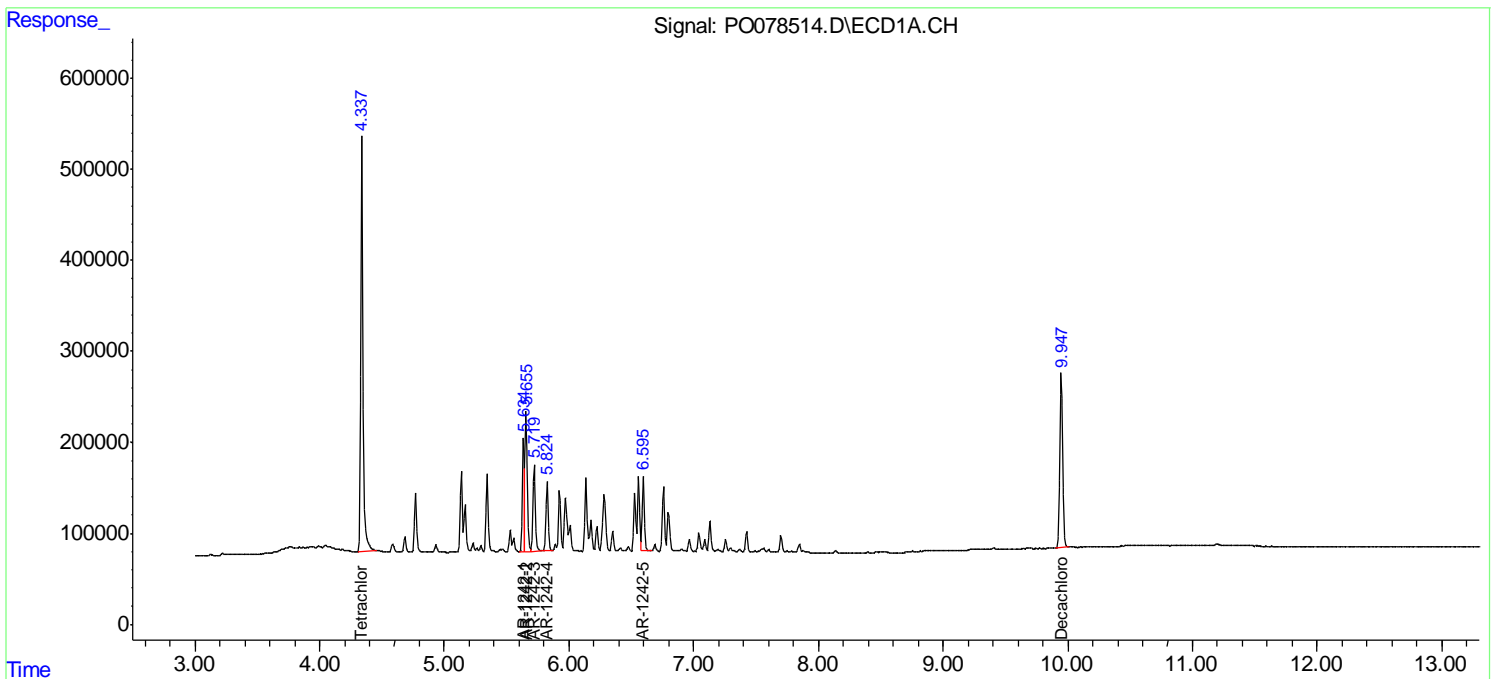
(f)=RT Delta > 1/2 Window (#)=Amounts differ by > 25% (m)=manual int.

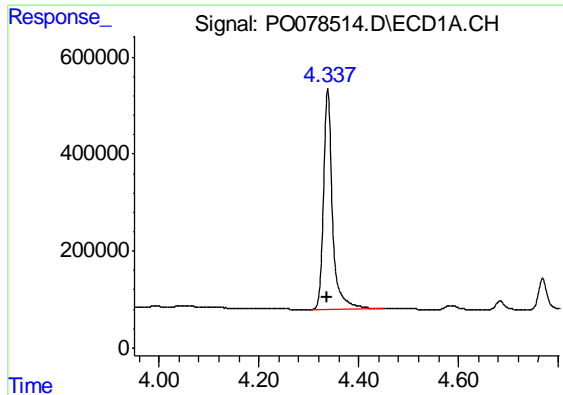
Data Path : Z:\pestpcbsrv\HPCHEM1\ECD_O\Data\PO060721\
 Data File : PO078514.D
 Signal(s) : Signal #1: ECD1A.CH Signal #2: ECD2B.CH
 Acq On : 07 Jun 2021 17:48
 Operator : DD\AJ
 Sample : AR1242ICC750
 Misc :
 ALS Vial : 19 Sample Multiplier: 1

Instrument :
 ECD_O
ClientSampled :
 AR1242ICC750

Integration File signal 1: autoint1.e
 Integration File signal 2: autoint2.e
 Quant Time: Jun 08 03:39:21 2021
 Quant Method : Z:\pestpcbsrv\HPCHEM1\ECD_O\methods\PO060721.M
 Quant Title : GC EXTRACTABLES
 QLast Update : Tue Jun 08 03:38:40 2021
 Response via : Initial Calibration
 Integrator: ChemStation 6890 Scale Mode: Small noise peaks clipped

Volume Inj. : 2 µl
 Signal #1 Phase : ZB-MR1 Signal #2 Phase: ZB-MR2
 Signal #1 Info : 30Mx0.32mmx 0.50µ Signal #2 Info : 30M x 0.32mm x 0.25µm

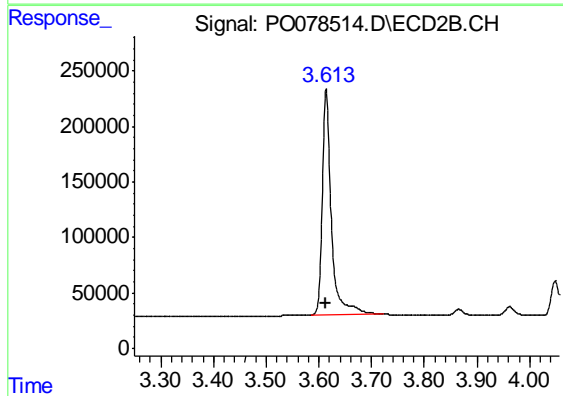




#1 Tetrachloro-m-xylene

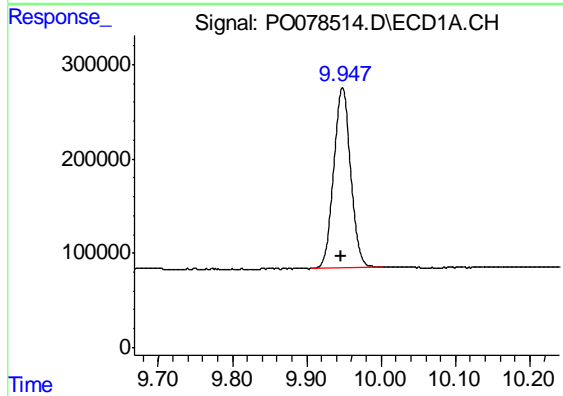
R.T.: 4.338 min
 Delta R.T.: 0.000 min
 Response: 5684932
 Conc: 74.21 ng/ml

Instrument :
 ECD_O
 ClientSampleId :
 AR1242ICC750



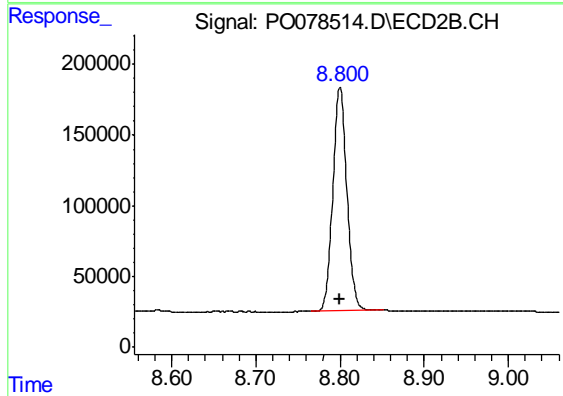
#1 Tetrachloro-m-xylene

R.T.: 3.614 min
 Delta R.T.: 0.000 min
 Response: 2443706
 Conc: 73.47 ng/ml



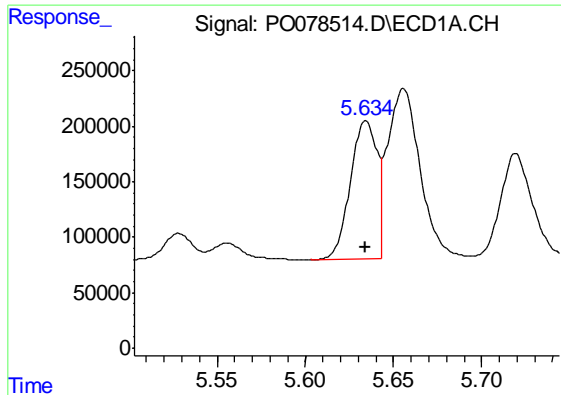
#2 Decachlorobiphenyl

R.T.: 9.948 min
 Delta R.T.: 0.000 min
 Response: 3020353
 Conc: 73.46 ng/ml



#2 Decachlorobiphenyl

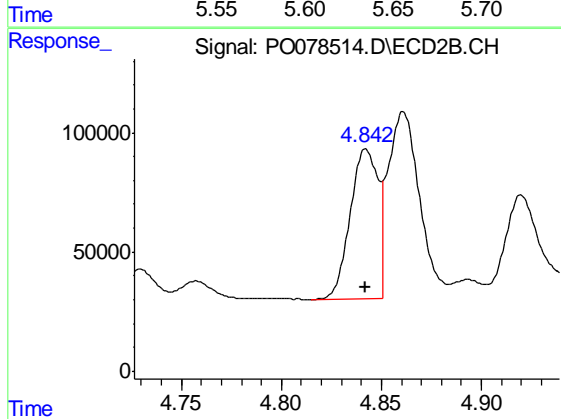
R.T.: 8.800 min
 Delta R.T.: 0.000 min
 Response: 1841347
 Conc: 71.28 ng/ml



#16 AR-1242-1

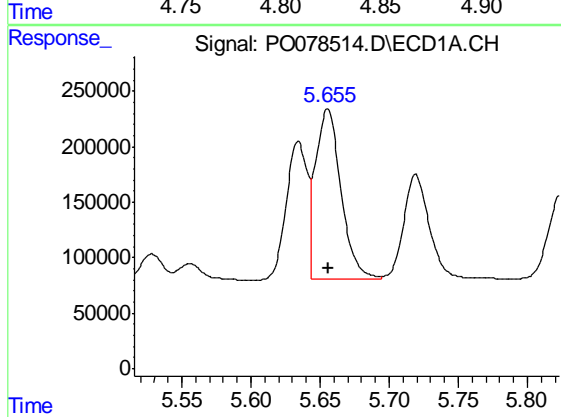
R.T.: 5.634 min
 Delta R.T.: 0.000 min
 Response: 1317781
 Conc: 728.14 ng/ml

Instrument :
 ECD_O
 ClientSampleId :
 AR1242ICC750



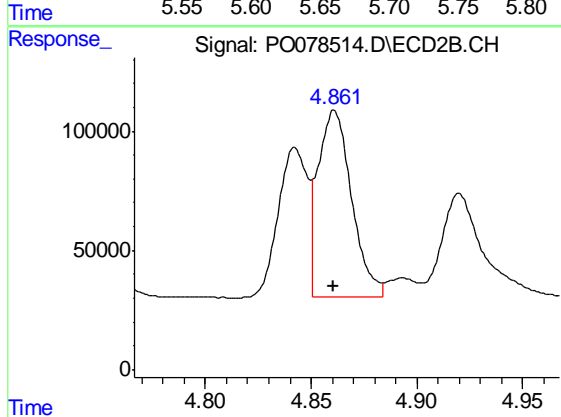
#16 AR-1242-1

R.T.: 4.842 min
 Delta R.T.: 0.000 min
 Response: 598839
 Conc: 712.80 ng/ml



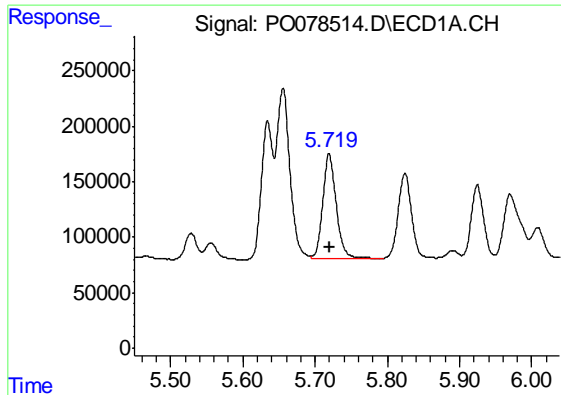
#17 AR-1242-2

R.T.: 5.656 min
 Delta R.T.: 0.000 min
 Response: 1980924
 Conc: 729.12 ng/ml



#17 AR-1242-2

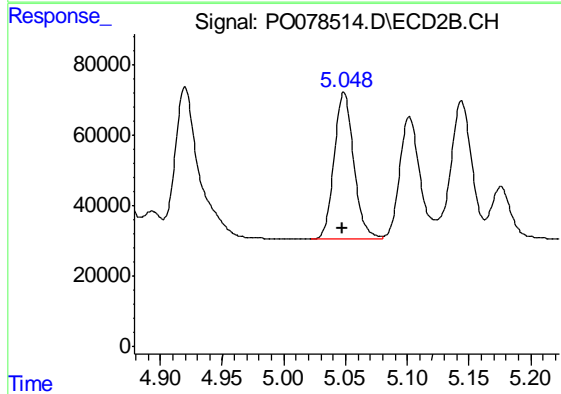
R.T.: 4.861 min
 Delta R.T.: 0.000 min
 Response: 878272
 Conc: 714.60 ng/ml



#18 AR-1242-3

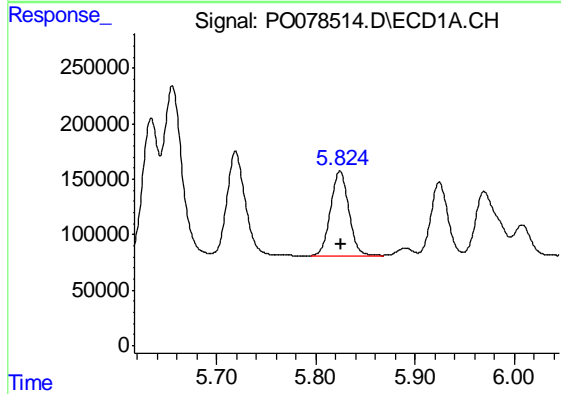
R.T.: 5.719 min
 Delta R.T.: 0.000 min
 Response: 1223410
 Conc: 737.01 ng/ml

Instrument :
 ECD_O
 ClientSampled :
 AR1242ICC750



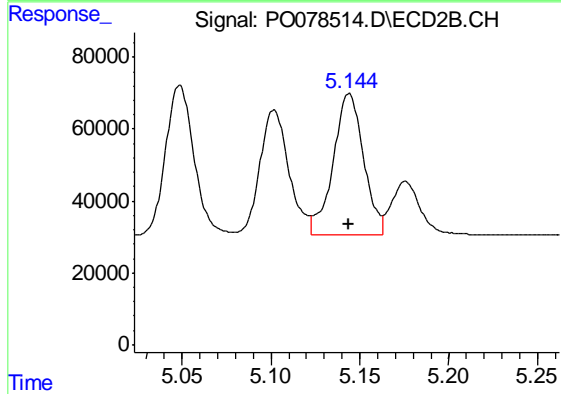
#18 AR-1242-3

R.T.: 5.049 min
 Delta R.T.: 0.000 min
 Response: 465262
 Conc: 723.17 ng/ml



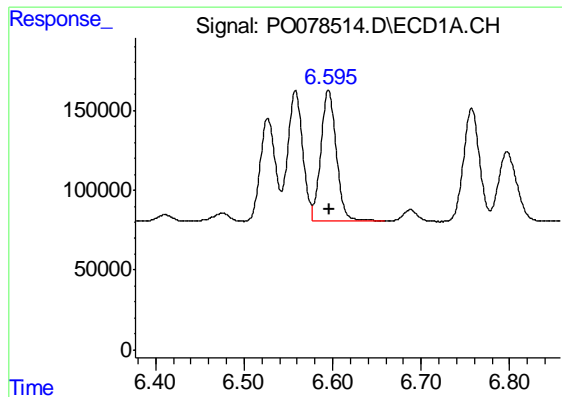
#19 AR-1242-4

R.T.: 5.824 min
 Delta R.T.: 0.000 min
 Response: 979250
 Conc: 739.28 ng/ml



#19 AR-1242-4

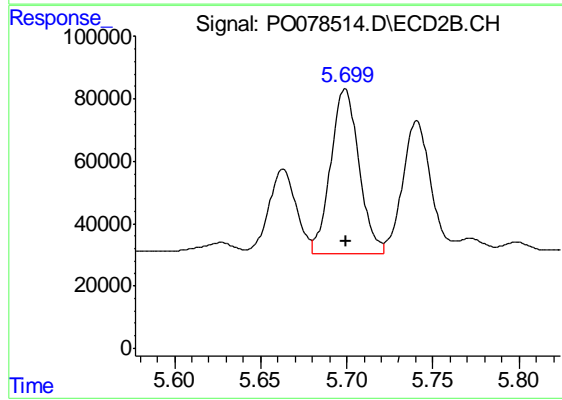
R.T.: 5.144 min
 Delta R.T.: 0.000 min
 Response: 472265
 Conc: 711.74 ng/ml



#20 AR-1242-5

R.T.: 6.595 min
Delta R.T.: 0.000 min
Response: 988866
Conc: 731.82 ng/ml

Instrument :
ECD_O
ClientSampleId :
AR1242ICC750



#20 AR-1242-5

R.T.: 5.699 min
Delta R.T.: 0.000 min
Response: 599729
Conc: 713.10 ng/ml