

Data Path : Z:\pestpcbsrv\HPCHEM1\ECD_0\Data\P0060721\
 Data File : P0078522.D
 Signal(s) : Signal #1: ECD1A.CH Signal #2: ECD2B.CH
 Acq On : 07 Jun 2021 20:06
 Operator : DD\AJ
 Sample : AR1248ICC050
 Misc :
 ALS Vial : 27 Sample Multiplier: 1

Instrument :
 ECD_0
 ClientSampleId :
 AR1248ICC050

Integration File signal 1: autoint1.e
 Integration File signal 2: autoint2.e
 Quant Time: Jun 08 04:21:08 2021
 Quant Method : Z:\pestpcbsrv\HPCHEM1\ECD_0\methods\P0060721.M
 Quant Title : GC EXTRACTABLES
 QLast Update : Tue Jun 08 03:51:05 2021
 Response via : Initial Calibration
 Integrator: ChemStation 6890 Scale Mode: Small noise peaks clipped

Volume Inj. : 2 µl
 Signal #1 Phase : ZB-MR1 Signal #2 Phase: ZB-MR2
 Signal #1 Info : 30Mx0.32mmx 0.50µ Signal #2 Info : 30M x 0.32mm x 0.25µm

Compound	RT#1	RT#2	Resp#1	Resp#2	ng/ml	ng/ml

System Monitoring Compounds						
1) SA Tetrachlo...	4.337	3.613	358029	168959	4.734	5.155
2) SA Decachlor...	9.947	8.799	233861	156545	5.602	6.024
Target Compounds						
21) L5 AR-1248-1	5.633	4.842	70207	35237	50.673	54.404
22) L5 AR-1248-2	5.924	5.101	109152	56873	57.280	59.387
23) L5 AR-1248-3	6.134	5.144	119248	56197	52.864	58.958
24) L5 AR-1248-4	6.558	5.325	123174	66347	51.881	58.249
25) L5 AR-1248-5	6.596	5.740	118487	62603	51.195	58.660

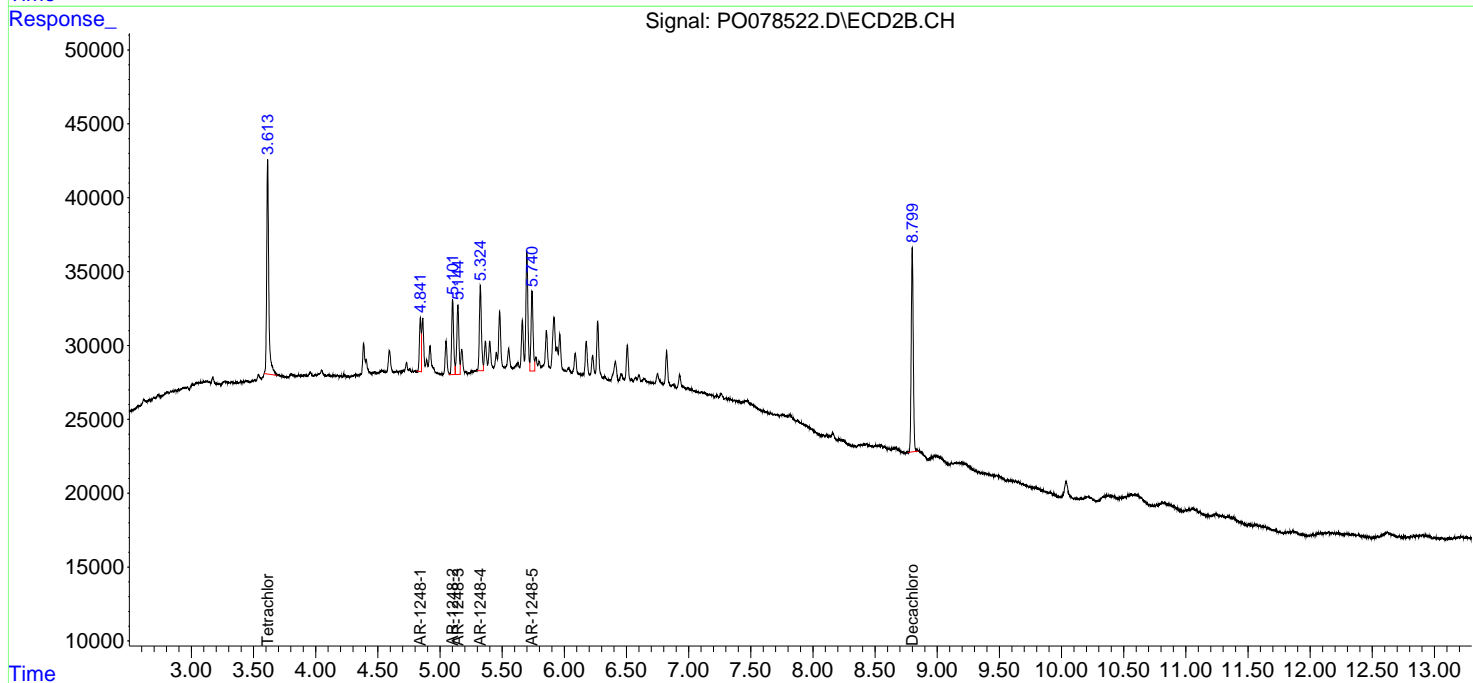
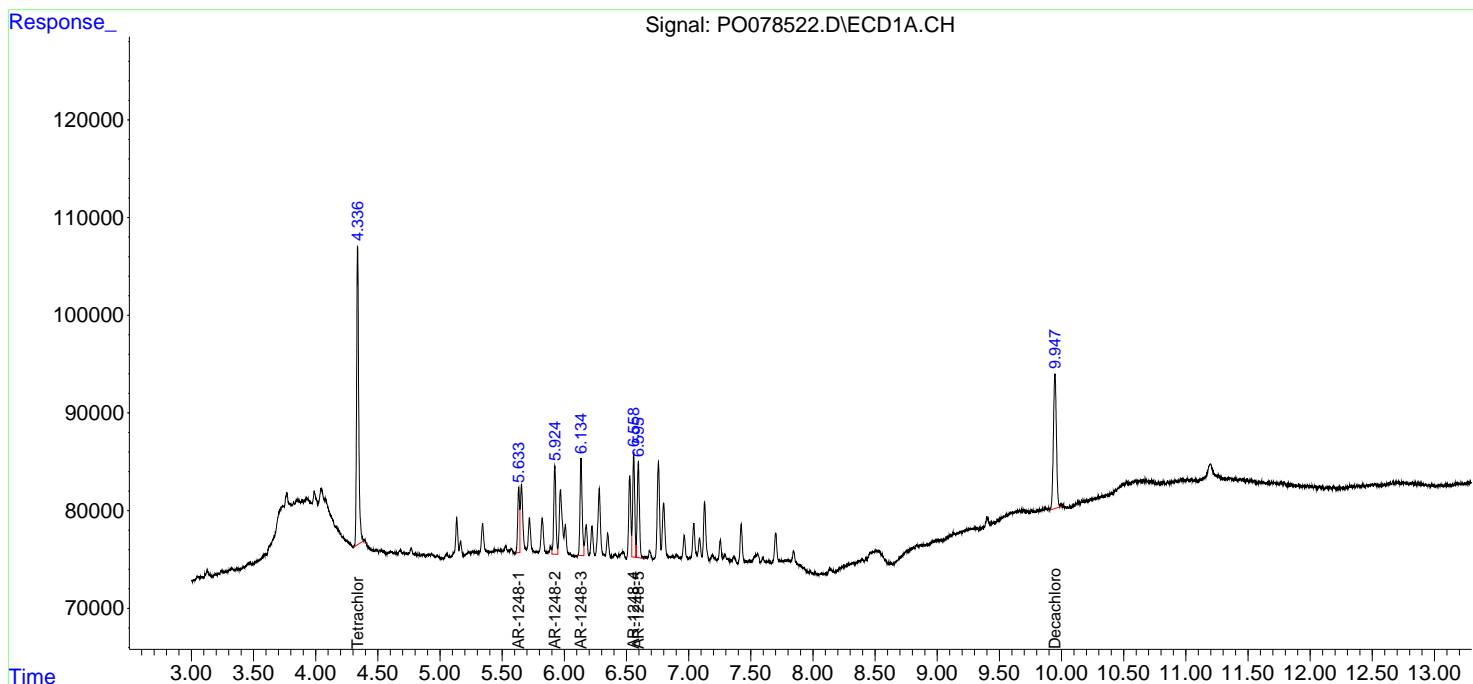
(f)=RT Delta > 1/2 Window (#)=Amounts differ by > 25% (m)=manual int.

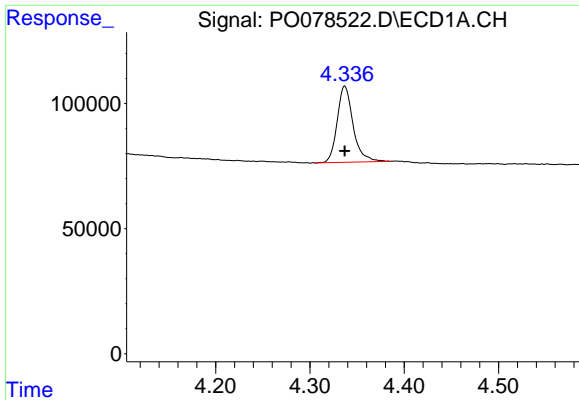
Data Path : Z:\pestpcbsrv\HPCHEM1\ECD_O\Data\P0060721\
 Data File : P0078522.D
 Signal(s) : Signal #1: ECD1A.CH Signal #2: ECD2B.CH
 Acq On : 07 Jun 2021 20:06
 Operator : DD\AJ
 Sample : AR1248ICC050
 Misc :
 ALS Vial : 27 Sample Multiplier: 1

Instrument :
 ECD_O
 ClientSampled :
 AR1248ICC050

Integration File signal 1: autoint1.e
 Integration File signal 2: autoint2.e
 Quant Time: Jun 08 04:21:08 2021
 Quant Method : Z:\pestpcbsrv\HPCHEM1\ECD_O\methods\P0060721.M
 Quant Title : GC EXTRACTABLES
 QLast Update : Tue Jun 08 03:51:05 2021
 Response via : Initial Calibration
 Integrator: ChemStation 6890 Scale Mode: Small noise peaks clipped

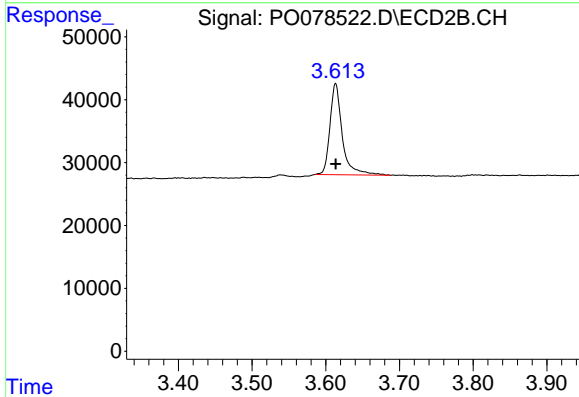
Volume Inj. : 2 µl
 Signal #1 Phase : ZB-MR1 Signal #2 Phase: ZB-MR2
 Signal #1 Info : 30Mx0.32mmx 0.50µ Signal #2 Info : 30M x 0.32mm x 0.25µm



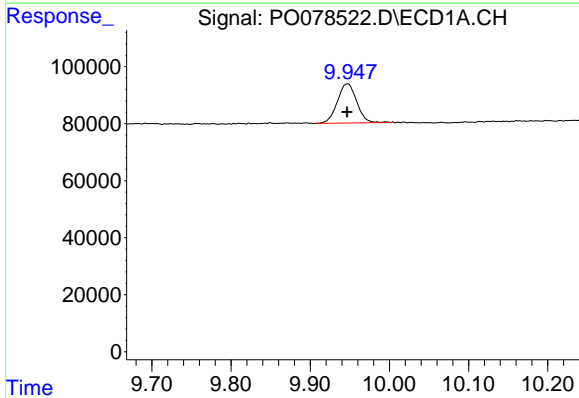


#1 Tetrachloro-m-xylene
 R.T.: 4.337 min
 Delta R.T.: 0.000 min
 Response: 358029
 Conc: 4.73 ng/ml

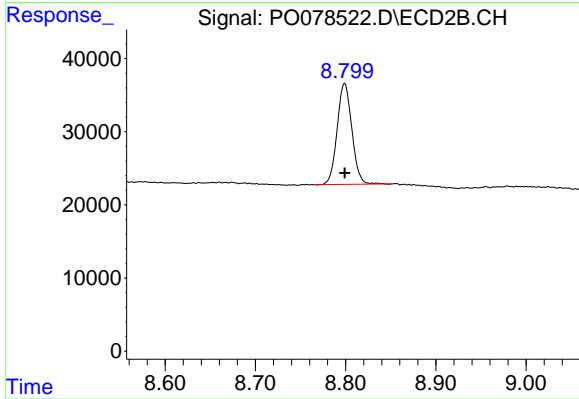
Instrument :
 ECD_O
 ClientSampleId :
 AR1248ICC050



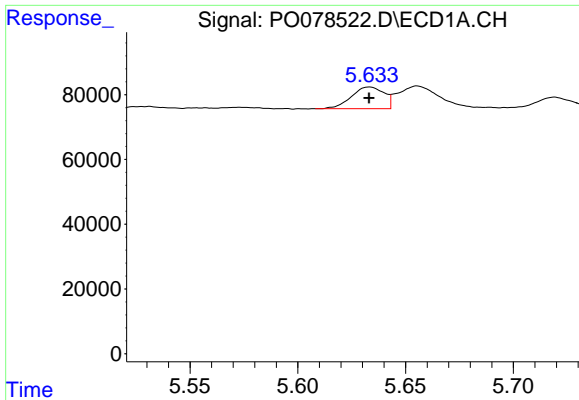
#1 Tetrachloro-m-xylene
 R.T.: 3.613 min
 Delta R.T.: 0.000 min
 Response: 168959
 Conc: 5.15 ng/ml



#2 Decachlorobiphenyl
 R.T.: 9.947 min
 Delta R.T.: 0.000 min
 Response: 233861
 Conc: 5.60 ng/ml



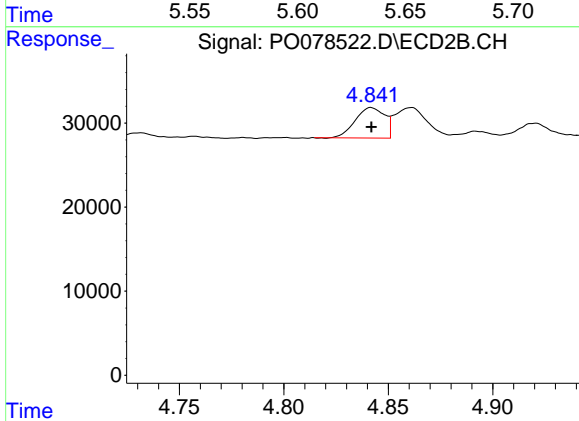
#2 Decachlorobiphenyl
 R.T.: 8.799 min
 Delta R.T.: 0.000 min
 Response: 156545
 Conc: 6.02 ng/ml



#21 AR-1248-1

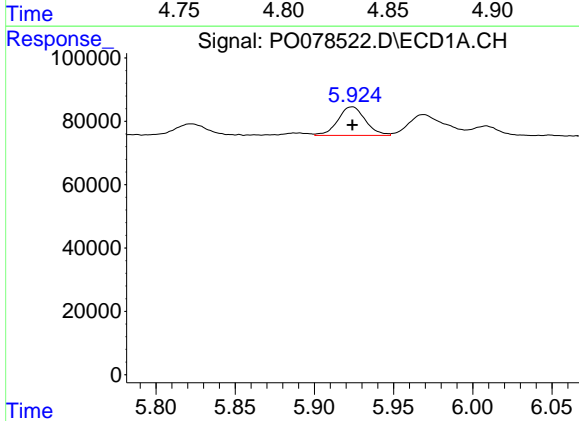
R.T.: 5.633 min
 Delta R.T.: 0.000 min
 Response: 70207
 Conc: 50.67 ng/ml

Instrument :
 ECD_O
ClientSampleId :
 AR1248ICC050



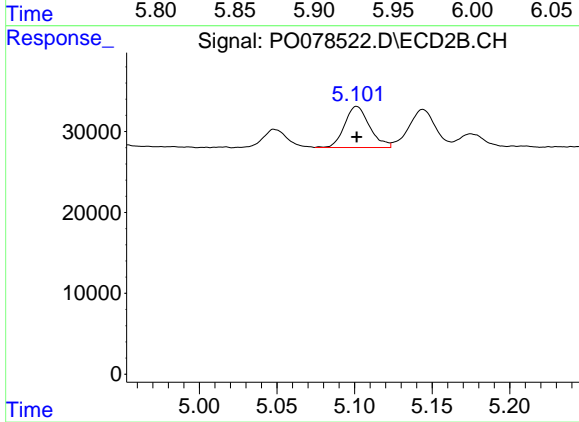
#21 AR-1248-1

R.T.: 4.842 min
 Delta R.T.: 0.000 min
 Response: 35237
 Conc: 54.40 ng/ml



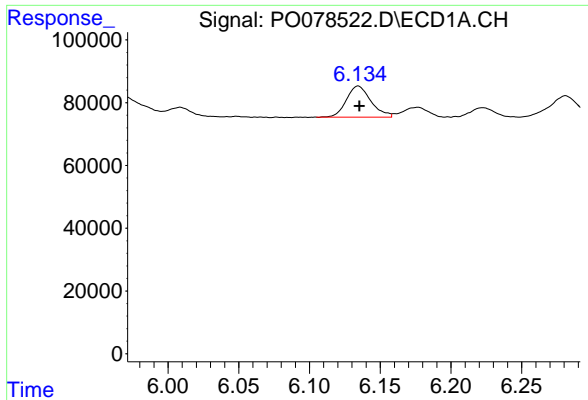
#22 AR-1248-2

R.T.: 5.924 min
 Delta R.T.: 0.000 min
 Response: 109152
 Conc: 57.28 ng/ml



#22 AR-1248-2

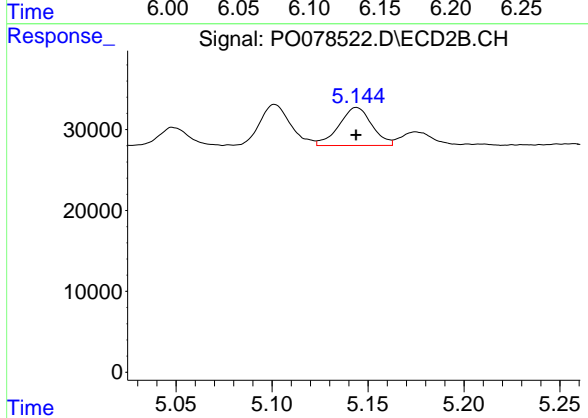
R.T.: 5.101 min
 Delta R.T.: 0.000 min
 Response: 56873
 Conc: 59.39 ng/ml



#23 AR-1248-3

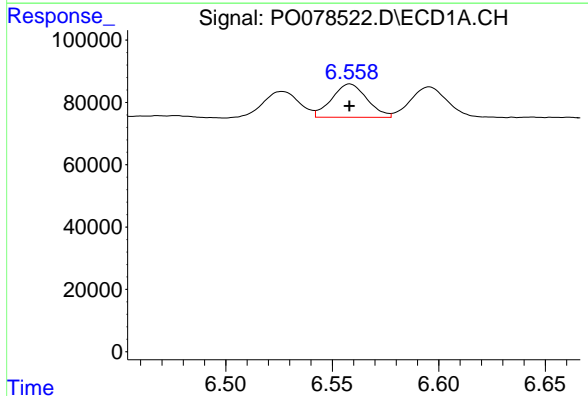
R.T.: 6.134 min
 Delta R.T.: 0.000 min
 Response: 119248
 Conc: 52.86 ng/ml

Instrument :
 ECD_O
ClientSampled :
 AR1248ICC050



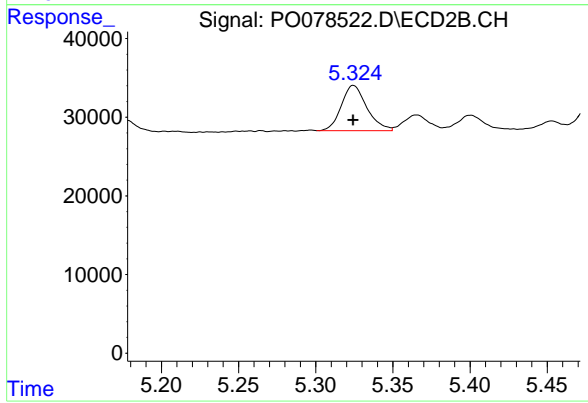
#23 AR-1248-3

R.T.: 5.144 min
 Delta R.T.: 0.000 min
 Response: 56197
 Conc: 58.96 ng/ml



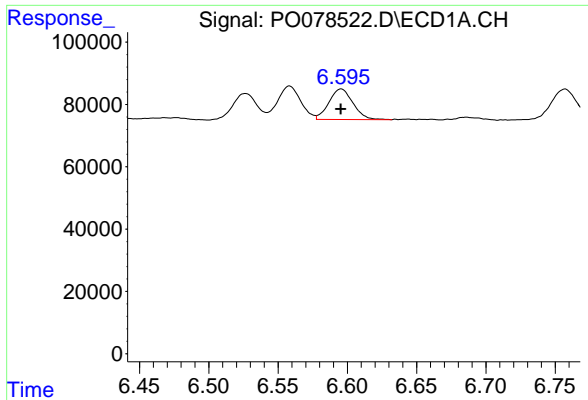
#24 AR-1248-4

R.T.: 6.558 min
 Delta R.T.: 0.000 min
 Response: 123174
 Conc: 51.88 ng/ml



#24 AR-1248-4

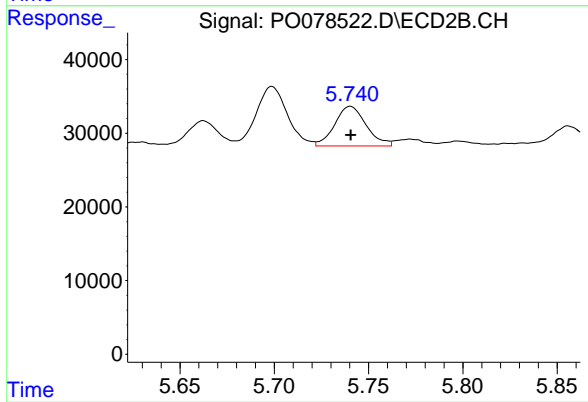
R.T.: 5.325 min
 Delta R.T.: 0.000 min
 Response: 66347
 Conc: 58.25 ng/ml



#25 AR-1248-5

R.T.: 6.596 min
Delta R.T.: 0.000 min
Response: 118487
Conc: 51.20 ng/ml

Instrument :
ECD_O
ClientSampled :
AR1248ICC050



#25 AR-1248-5

R.T.: 5.740 min
Delta R.T.: 0.000 min
Response: 62603
Conc: 58.66 ng/ml