

Data Path : Z:\pestpcbsrv\HPCHEM1\ECD\_0\Data\P0060721\  
 Data File : P0078544.D  
 Signal(s) : Signal #1: ECD1A.CH Signal #2: ECD2B.CH  
 Acq On : 08 Jun 2021 2:26  
 Operator : DD\AJ  
 Sample : AR1262ICV500  
 Misc :  
 ALS Vial : 49 Sample Multiplier: 1

Instrument :  
 ECD\_0  
 ClientSampleId :  
 ICVPO060721AR1262

Integration File signal 1: autoint1.e  
 Integration File signal 2: autoint2.e  
 Quant Time: Jun 08 09:24:09 2021  
 Quant Method : Z:\pestpcbsrv\HPCHEM1\ECD\_0\methods\P0060721.M  
 Quant Title : GC EXTRACTABLES  
 QLast Update : Tue Jun 08 05:39:51 2021  
 Response via : Initial Calibration  
 Integrator: ChemStation 6890 Scale Mode: Small noise peaks clipped

Volume Inj. : 2 µl  
 Signal #1 Phase : ZB-MR1 Signal #2 Phase: ZB-MR2  
 Signal #1 Info : 30Mx0.32mmx 0.50µ Signal #2 Info : 30M x 0.32mm x 0.25µm

Compound	RT#1	RT#2	Resp#1	Resp#2	ng/ml	ng/ml
-----						
System Monitoring Compounds						
1) SA Tetrachlo...	4.336	3.613	3766849	1592347	49.317	50.402
Target Compounds						
36) L8 AR-1262-1	7.918	6.927	1883688	565146	481.544	473.076
37) L8 AR-1262-2	8.458	7.475	3074750	1857028	480.601	473.512
38) L8 AR-1262-3	8.728	7.756	2072047	774589	496.120	470.557
39) L8 AR-1262-4	8.807	7.819	846416	1441531	273.131	479.225 #
40) L8 AR-1262-5	9.353	8.313	947627	664572	500.116	489.687
-----						

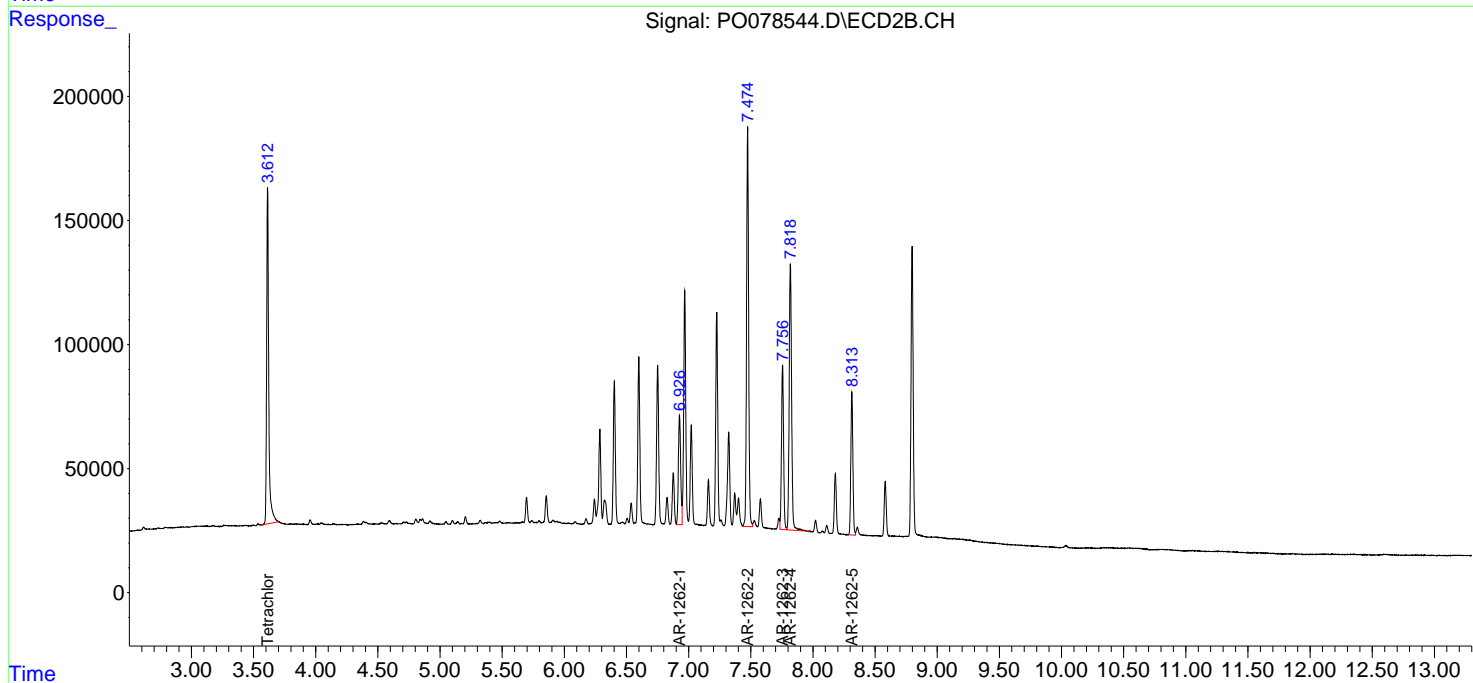
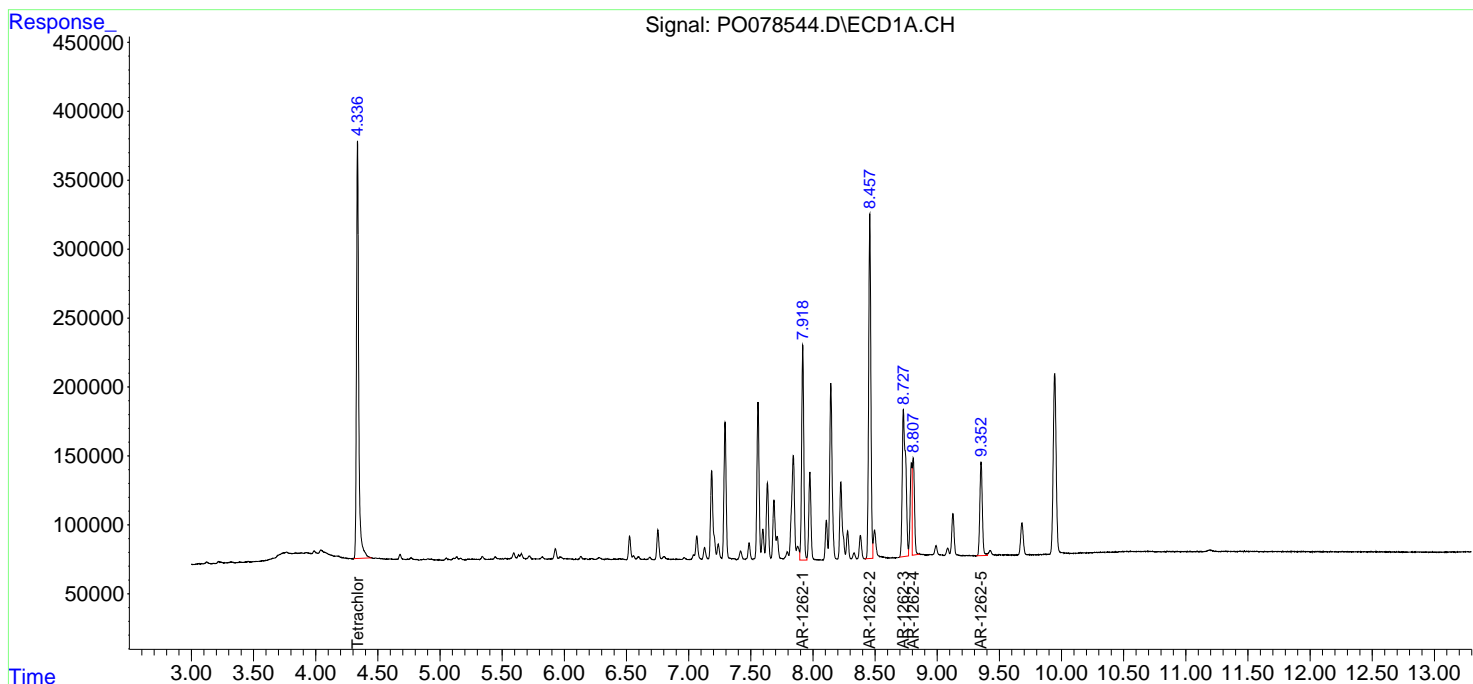
(f)=RT Delta > 1/2 Window (#)=Amounts differ by > 25% (m)=manual int.

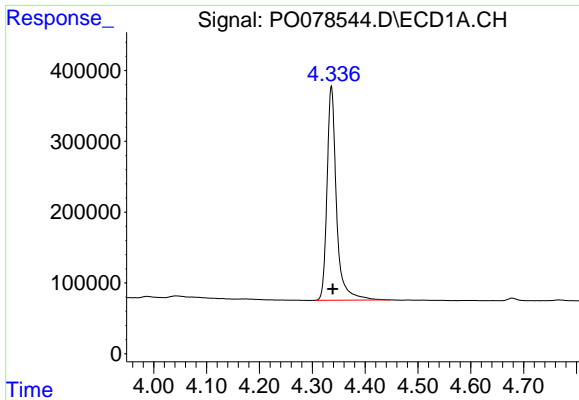
Data Path : Z:\pestpcbsrv\HPCHEM1\ECD\_0\Data\P0060721\  
 Data File : P0078544.D  
 Signal(s) : Signal #1: ECD1A.CH Signal #2: ECD2B.CH  
 Acq On : 08 Jun 2021 2:26  
 Operator : DD\AJ  
 Sample : AR1262ICV500  
 Misc :  
 ALS Vial : 49 Sample Multiplier: 1

Instrument :  
 ECD\_O  
 ClientSampled :  
 ICVPO060721AR1262

Integration File signal 1: autoint1.e  
 Integration File signal 2: autoint2.e  
 Quant Time: Jun 08 09:24:09 2021  
 Quant Method : Z:\pestpcbsrv\HPCHEM1\ECD\_0\methods\P0060721.M  
 Quant Title : GC EXTRACTABLES  
 QLast Update : Tue Jun 08 05:39:51 2021  
 Response via : Initial Calibration  
 Integrator: ChemStation 6890 Scale Mode: Small noise peaks clipped

Volume Inj. : 2 µl  
 Signal #1 Phase : ZB-MR1 Signal #2 Phase: ZB-MR2  
 Signal #1 Info : 30Mx0.32mmx 0.50µ Signal #2 Info : 30M x 0.32mm x 0.25µm

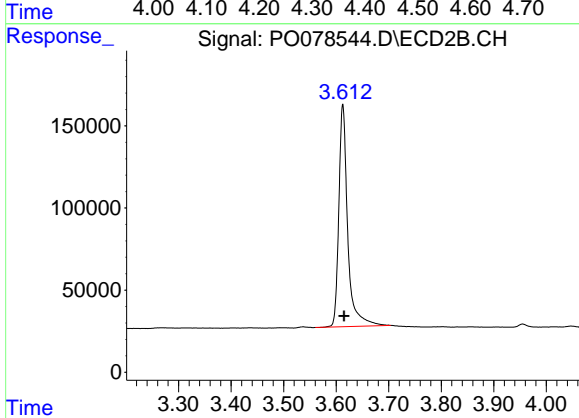




#1 Tetrachloro-m-xylene

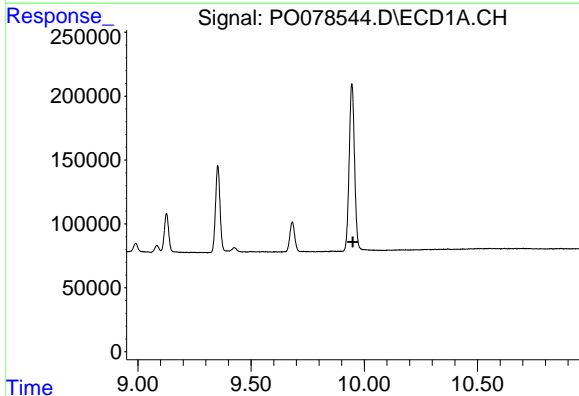
R.T.: 4.336 min  
 Delta R.T.: -0.003 min  
 Response: 3766849  
 Conc: 49.32 ng/ml

Instrument :  
 ECD\_O  
 ClientSampleId :  
 ICVPO060721AR1262



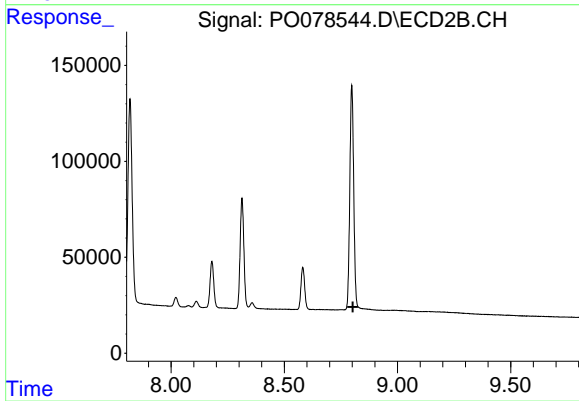
#1 Tetrachloro-m-xylene

R.T.: 3.613 min  
 Delta R.T.: -0.002 min  
 Response: 1592347  
 Conc: 50.40 ng/ml



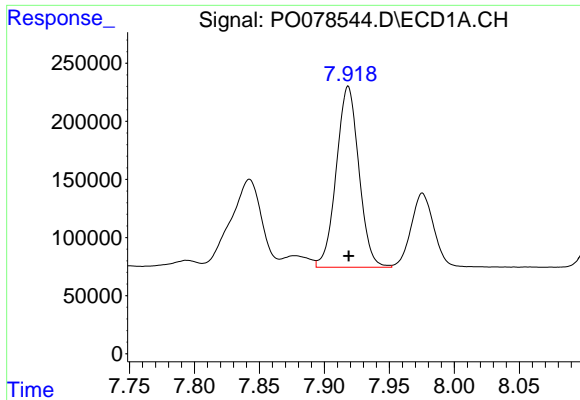
#2 Decachlorobiphenyl

R.T.: 0.000 min  
 Exp R.T. : 9.950 min  
 Response: 0  
 Conc: N.D.



#2 Decachlorobiphenyl

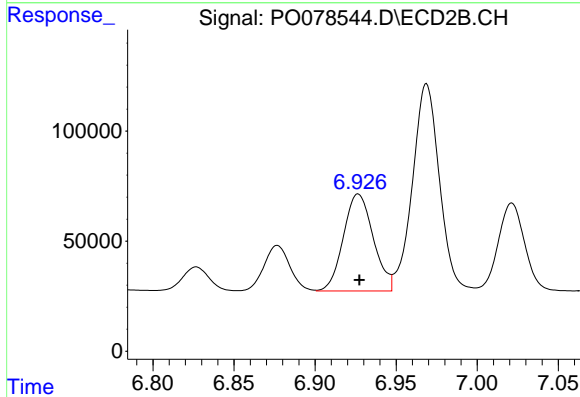
R.T.: 0.000 min  
 Exp R.T. : 8.803 min  
 Response: 0  
 Conc: N.D.



#36 AR-1262-1

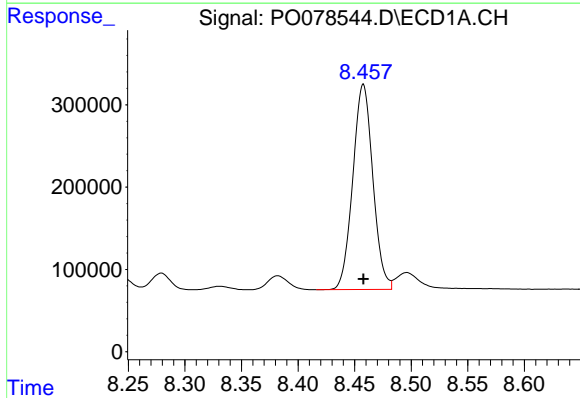
R.T.: 7.918 min  
 Delta R.T.: 0.000 min  
 Response: 1883688  
 Conc: 481.54 ng/ml

Instrument :  
 ECD\_O  
 ClientSampleId :  
 ICVPO060721AR1262



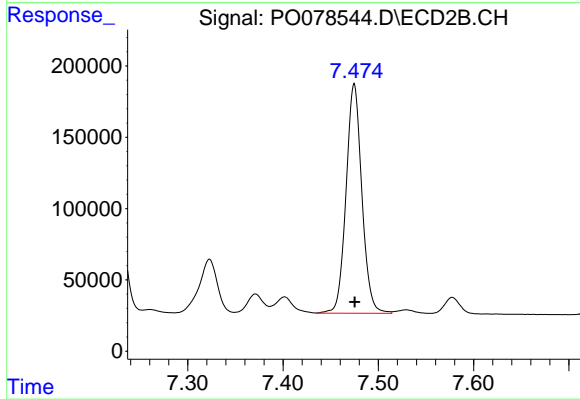
#36 AR-1262-1

R.T.: 6.927 min  
 Delta R.T.: 0.000 min  
 Response: 565146  
 Conc: 473.08 ng/ml



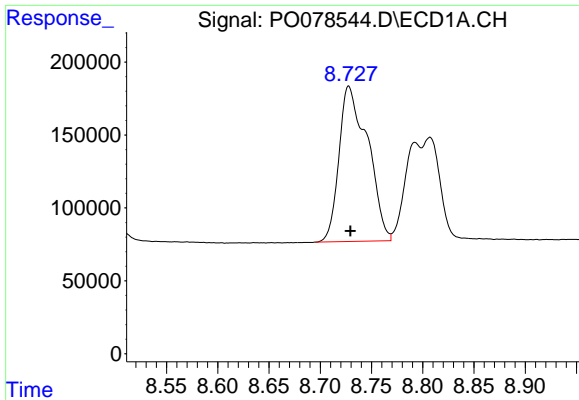
#37 AR-1262-2

R.T.: 8.458 min  
 Delta R.T.: 0.000 min  
 Response: 3074750  
 Conc: 480.60 ng/ml



#37 AR-1262-2

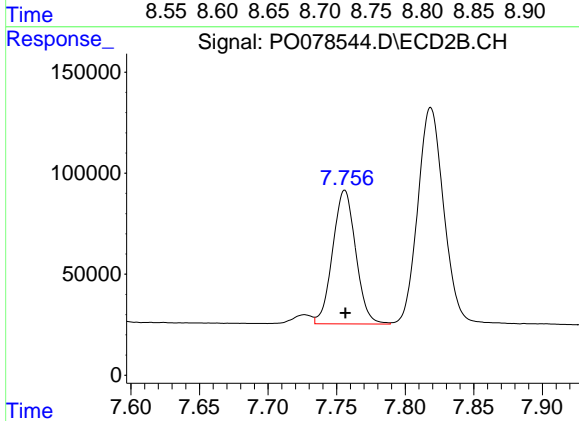
R.T.: 7.475 min  
 Delta R.T.: 0.000 min  
 Response: 1857028  
 Conc: 473.51 ng/ml



#38 AR-1262-3

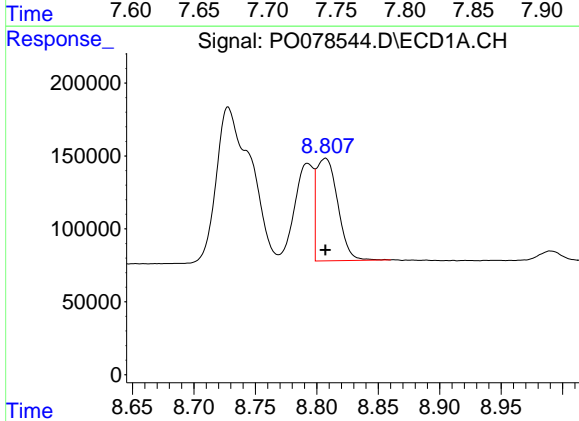
R.T.: 8.728 min  
 Delta R.T.: -0.001 min  
 Response: 2072047  
 Conc: 496.12 ng/ml

Instrument :  
 ECD\_O  
 ClientSampleId :  
 ICVPO060721AR1262



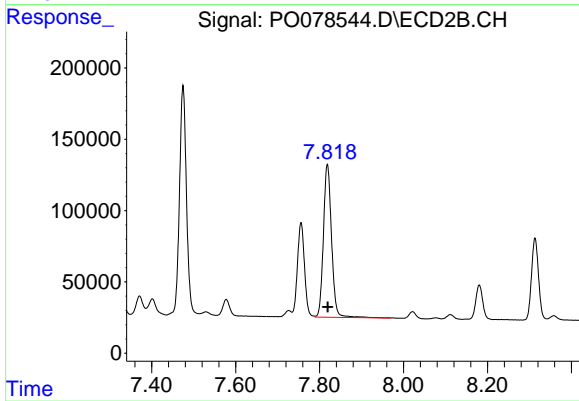
#38 AR-1262-3

R.T.: 7.756 min  
 Delta R.T.: 0.000 min  
 Response: 774589  
 Conc: 470.56 ng/ml



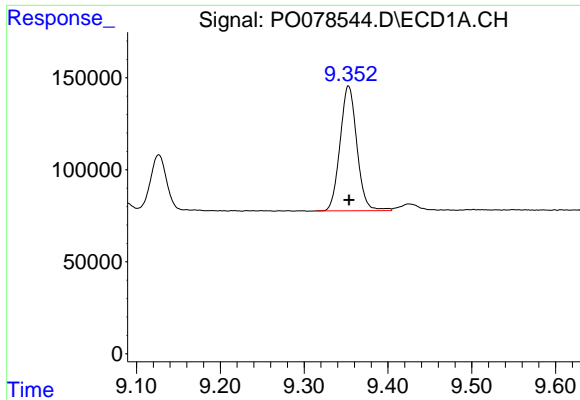
#39 AR-1262-4

R.T.: 8.807 min  
 Delta R.T.: 0.000 min  
 Response: 846416  
 Conc: 273.13 ng/ml



#39 AR-1262-4

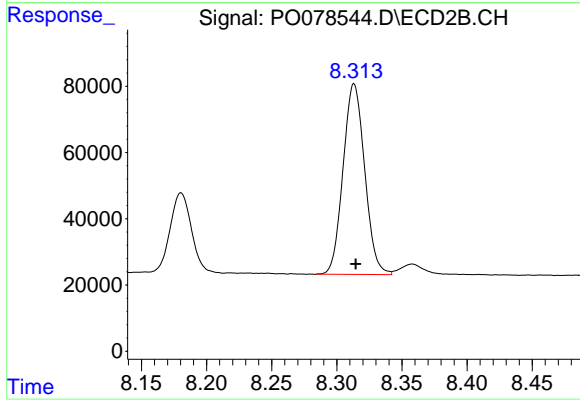
R.T.: 7.819 min  
 Delta R.T.: 0.000 min  
 Response: 1441531  
 Conc: 479.22 ng/ml



#40 AR-1262-5

R.T.: 9.353 min  
Delta R.T.: 0.000 min  
Response: 947627  
Conc: 500.12 ng/ml

Instrument :  
ECD\_O  
ClientSampleId :  
ICVPO060721AR1262



#40 AR-1262-5

R.T.: 8.313 min  
Delta R.T.: -0.001 min  
Response: 664572  
Conc: 489.69 ng/ml