

Data Path : Z:\pestpcbsrv\HPCHEM1\ECD_R\Data\PR060821\
 Data File : PR050734.D
 Signal(s) : Signal #1: ECD1A.ch Signal #2: ECD2B.ch
 Acq On : 08 Jun 2021 10:45
 Operator : DD\AJ
 Sample : M2612-05
 Misc :
 ALS Vial : 9 Sample Multiplier: 1

Instrument :
 ECD_O
 ClientSampleId :

Integration File signal 1: autoint1.e
 Integration File signal 2: autoint2.e
 Quant Time: Jun 09 02:52:51 2021
 Quant Method : Z:\pestpcbsrv\HPCHEM1\ECD_R\Method\PR060721.M
 Quant Title : GC EXTRACTABLES
 QLast Update : Tue Jun 08 03:02:26 2021
 Response via : Initial Calibration
 Integrator: ChemStation

Volume Inj. : 2 µl
 Signal #1 Phase : ZB-MR2 Signal #2 Phase: ZB-MR2
 Signal #1 Info : 30Mx0.32mmx 0.50µ Signal #2 Info : 30M x 0.32mm x 0.25µm

Compound	RT#1	RT#2	Resp#1	Resp#2	ng/ml	ng/ml

System Monitoring Compounds						
1) SA Tetrachlo...	4.631	3.812	165.5E6	170.3E6	25.959	26.265
2) SA Decachlor...	10.505	8.841	150.9E6	152.1E6	20.395	19.830
Target Compounds						
5) L1 AR-1016-3	5.926f	5.095	1513795	552219	6.839	3.094 #
7) L1 AR-1016-5	0.000	5.344	0	2822588	N.D.	14.366 #
9) L2 AR-1221-2	4.943	4.116	1774658	2988153	33.867	57.993 #
13) L3 AR-1232-3	0.000	5.095	0	552219	N.D.	7.825 #
15) L3 AR-1232-5	0.000	5.344	0	2822588	N.D.	39.217 #
18) L4 AR-1242-3	5.926f	5.095	1513795	552219	9.329	4.159 #
20) L4 AR-1242-5	0.000	5.696	0	845155	N.D.	4.614 #
24) L5 AR-1248-4	0.000	5.344	0	2822588	N.D.	11.407 #
26) L6 AR-1254-1	0.000	5.696	0	845155	N.D.	2.204 #
32) L7 AR-1260-2	0.000	6.544f	0	969080	N.D.	2.059 #
34) L7 AR-1260-4	0.000	7.171f	0	2406509	N.D.	6.185 #
35) L7 AR-1260-5	0.000	7.402f	0	1527936	N.D.	1.634 #
37) L8 AR-1262-2	0.000	7.402f	0	1527936	N.D.	1.434 #
39) L8 AR-1262-4	0.000	7.764f	0	1325615	N.D.	1.688 #
42) L9 AR-1268-2	0.000	7.764f	0	1325615	N.D.	1.213 #
45) L9 AR-1268-5	0.000	8.576	0	1283791	N.D.	0.442 #

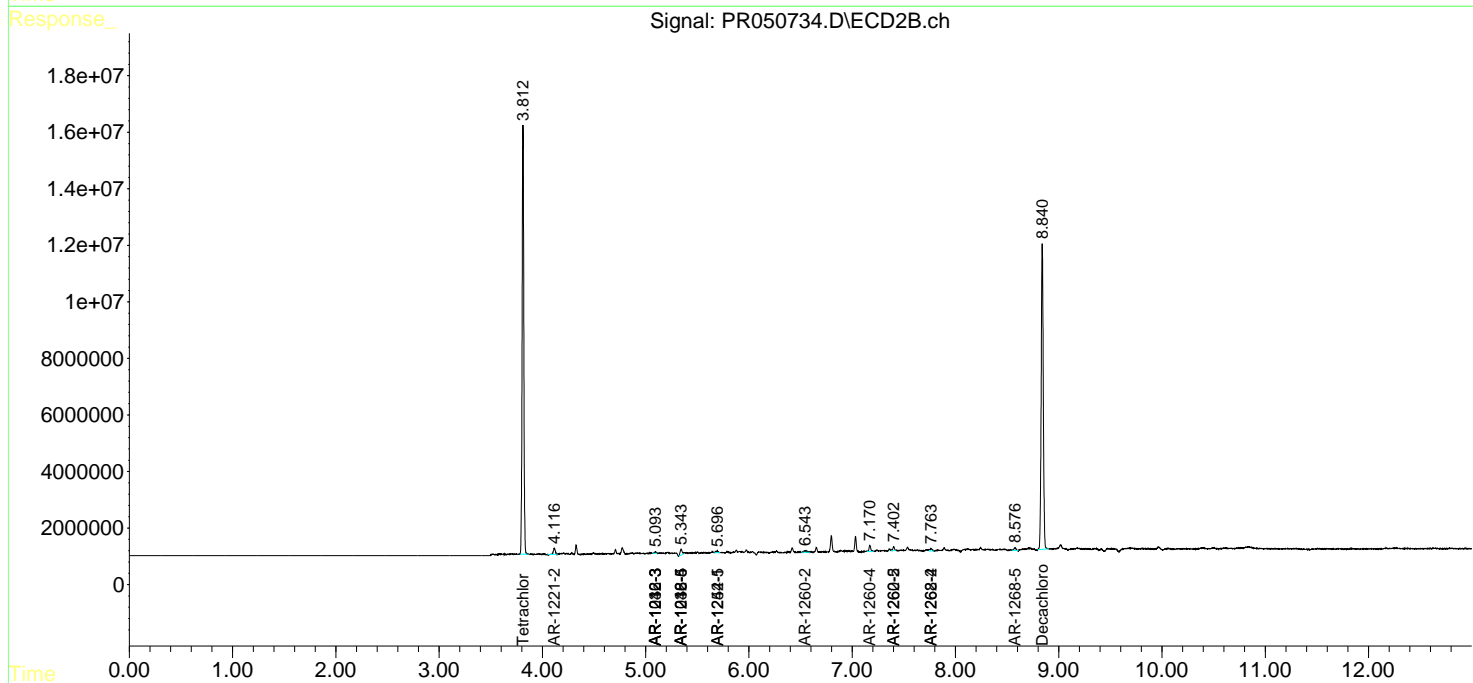
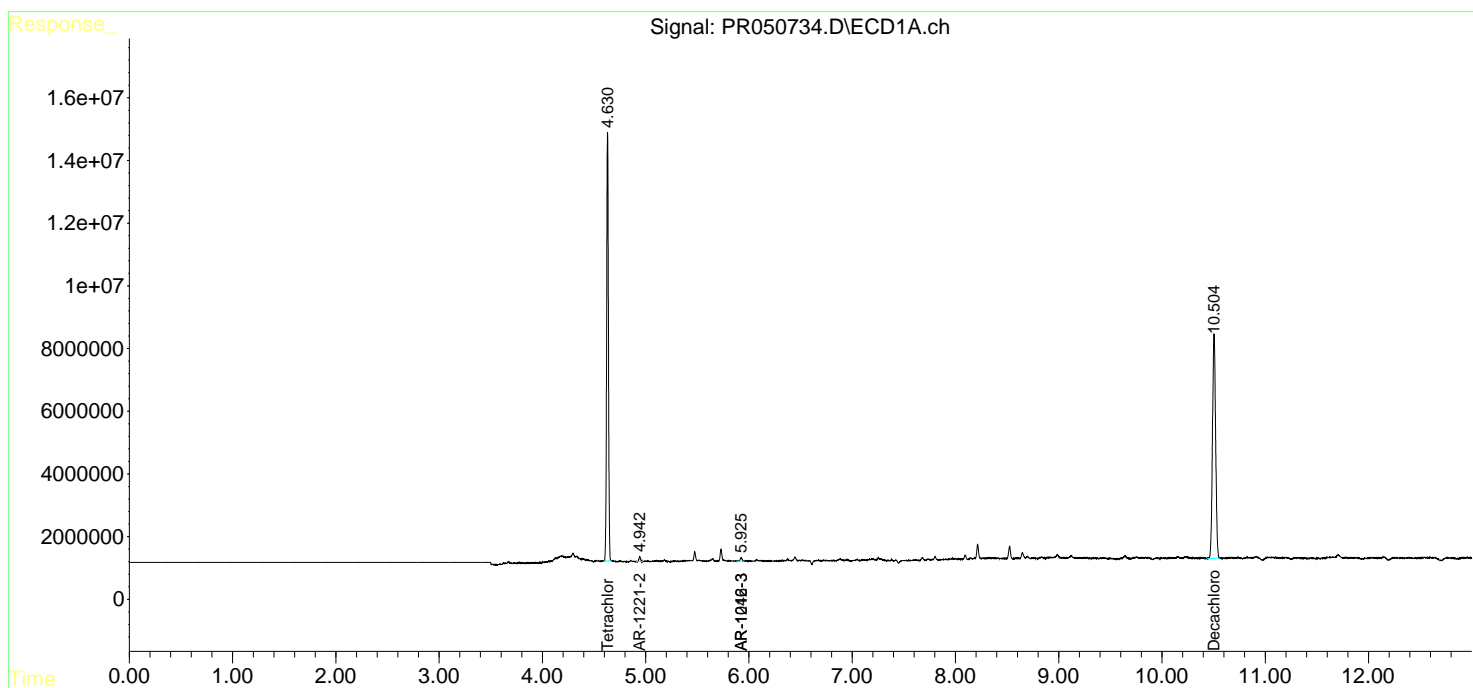
(f)=RT Delta > 1/2 Window (#)=Amounts differ by > 25% (m)=manual int.

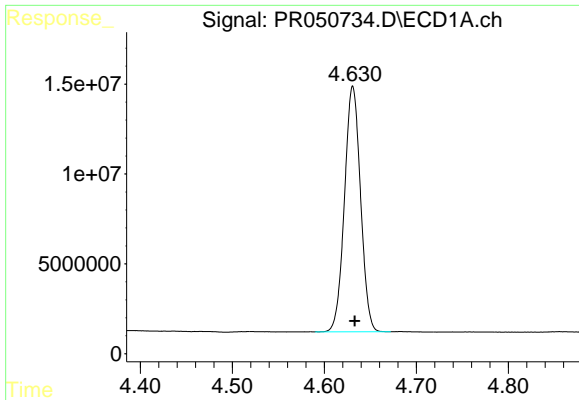
Data Path : Z:\pestpcbsrv\HPCHEM1\ECD_R\Data\PR060821\
 Data File : PR050734.D
 Signal(s) : Signal #1: ECD1A.ch Signal #2: ECD2B.ch
 Acq On : 08 Jun 2021 10:45
 Operator : DD\AJ
 Sample : M2612-05
 Misc :
 ALS Vial : 9 Sample Multiplier: 1

Instrument :
 ECD_O
 ClientSampled :

Integration File signal 1: autoint1.e
 Integration File signal 2: autoint2.e
 Quant Time: Jun 09 02:52:51 2021
 Quant Method : Z:\pestpcbsrv\HPCHEM1\ECD_R\Method\PR060721.M
 Quant Title : GC EXTRACTABLES
 QLast Update : Tue Jun 08 03:02:26 2021
 Response via : Initial Calibration
 Integrator: ChemStation

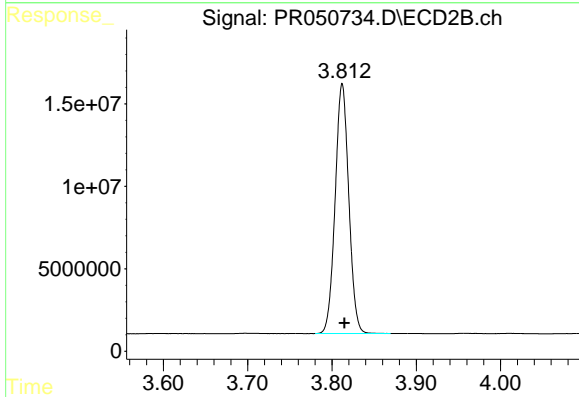
Volume Inj. : 2 µl
 Signal #1 Phase : ZB-MR1 Signal #2 Phase: ZB-MR2
 Signal #1 Info : 30Mx0.32mmx 0.50µm Signal #2 Info : 30M x 0.32mm x 0.25µm



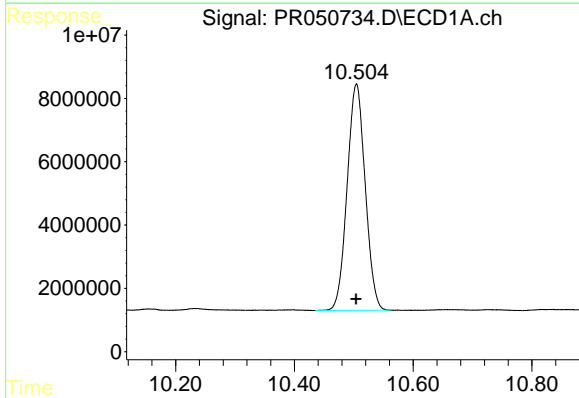


#1 Tetrachloro-m-xylene
 R.T.: 4.631 min
 Delta R.T.: -0.002 min
 Response: 165537710
 Conc: 25.96 ng/ml

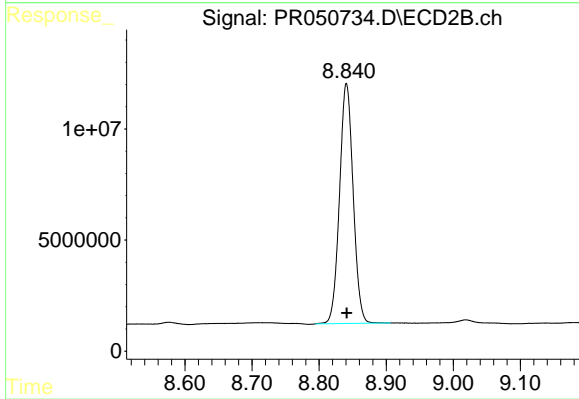
Instrument :
 ECD_O
 ClientSampleId :



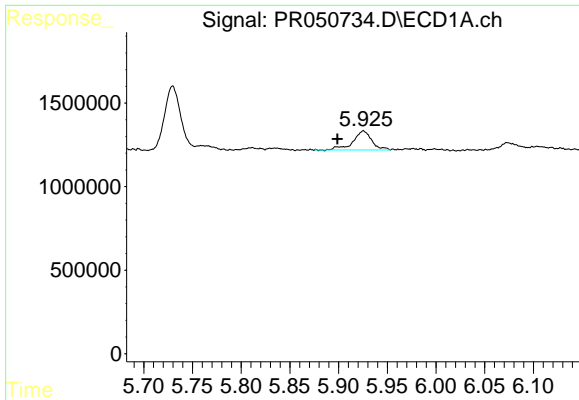
#1 Tetrachloro-m-xylene
 R.T.: 3.812 min
 Delta R.T.: -0.003 min
 Response: 170309537
 Conc: 26.26 ng/ml



#2 Decachlorobiphenyl
 R.T.: 10.505 min
 Delta R.T.: 0.000 min
 Response: 150876082
 Conc: 20.39 ng/ml



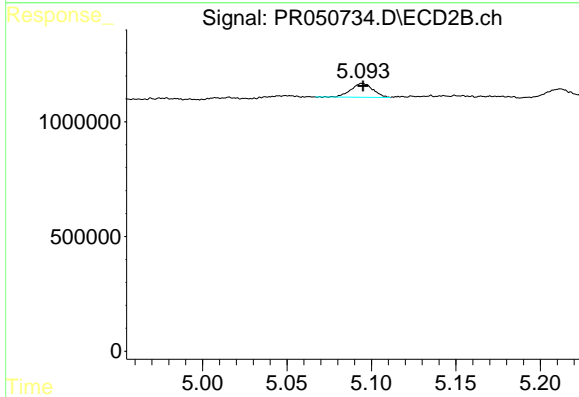
#2 Decachlorobiphenyl
 R.T.: 8.841 min
 Delta R.T.: 0.000 min
 Response: 152132432
 Conc: 19.83 ng/ml



#5 AR-1016-3

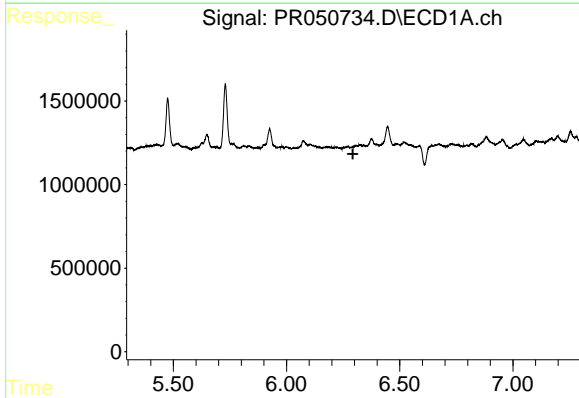
R.T.: 5.926 min
 Delta R.T.: 0.027 min
 Response: 1513795
 Conc: 6.84 ng/ml

Instrument :
 ECD_O
 ClientSampleId :



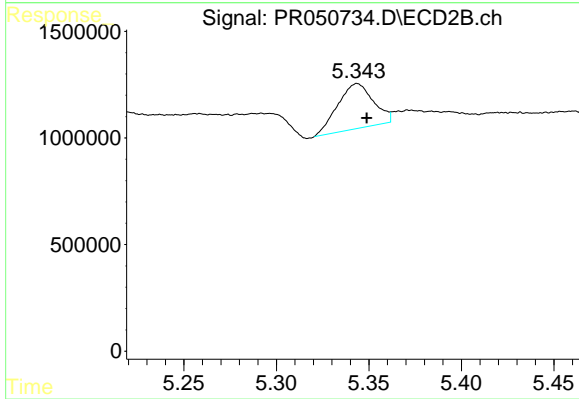
#5 AR-1016-3

R.T.: 5.095 min
 Delta R.T.: 0.000 min
 Response: 552219
 Conc: 3.09 ng/ml



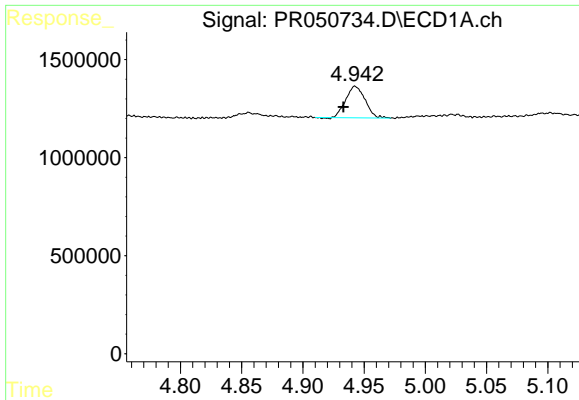
#7 AR-1016-5

R.T.: 0.000 min
 Exp R.T. : 6.293 min
 Response: 0
 Conc: N.D.



#7 AR-1016-5

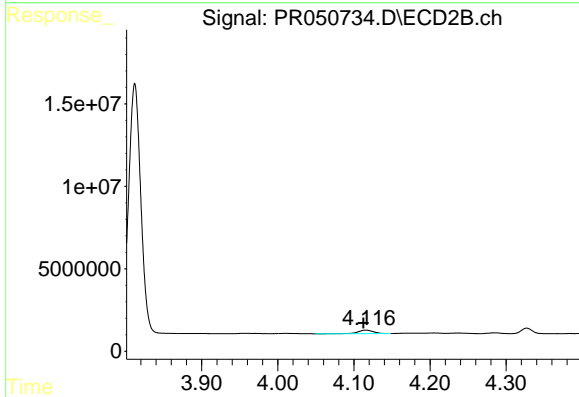
R.T.: 5.344 min
 Delta R.T.: -0.005 min
 Response: 2822588
 Conc: 14.37 ng/ml



#9 AR-1221-2

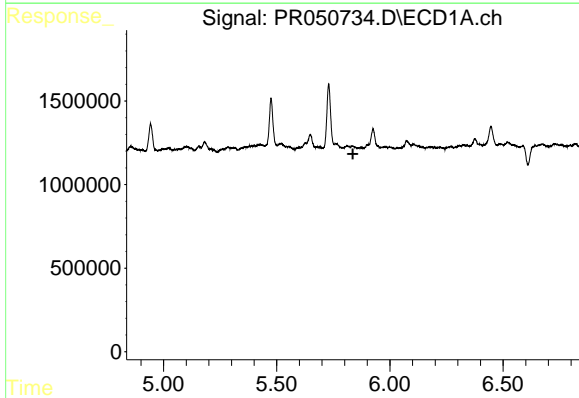
R.T.: 4.943 min
 Delta R.T.: 0.010 min
 Response: 1774658
 Conc: 33.87 ng/ml

Instrument :
 ECD_O
 ClientSampled :



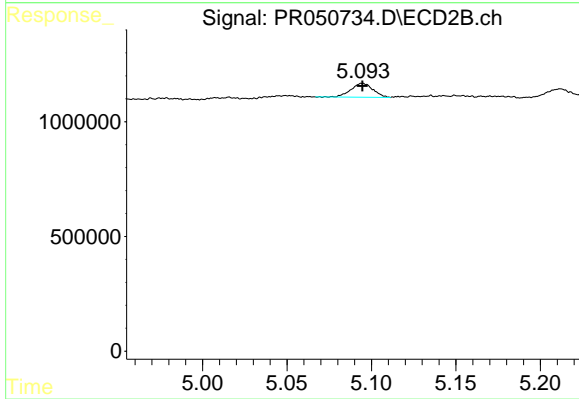
#9 AR-1221-2

R.T.: 4.116 min
 Delta R.T.: 0.003 min
 Response: 2988153
 Conc: 57.99 ng/ml



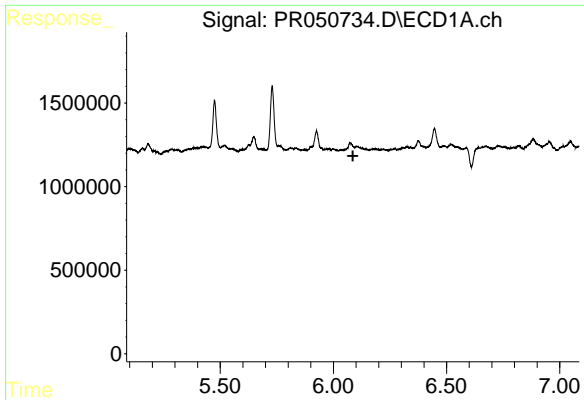
#13 AR-1232-3

R.T.: 0.000 min
 Exp R.T. : 5.837 min
 Response: 0
 Conc: N.D.



#13 AR-1232-3

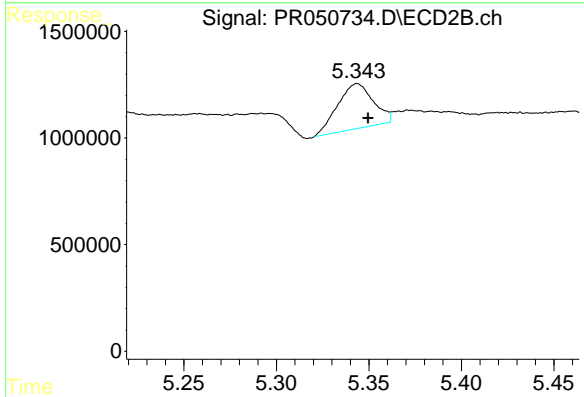
R.T.: 5.095 min
 Delta R.T.: 0.000 min
 Response: 552219
 Conc: 7.82 ng/ml



#15 AR-1232-5

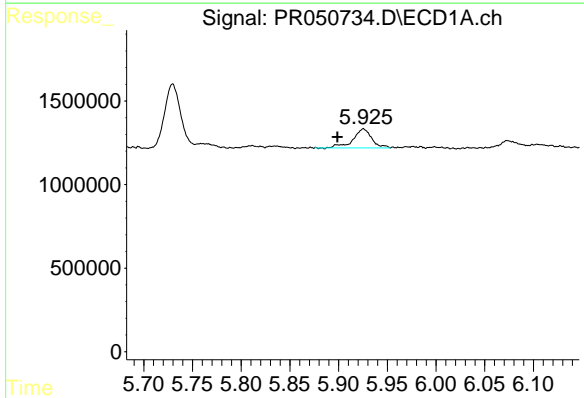
R.T.: 0.000 min
 Exp R.T.: 6.086 min
 Response: 0
 Conc: N.D.

Instrument :
 ECD_O
 ClientSampled :



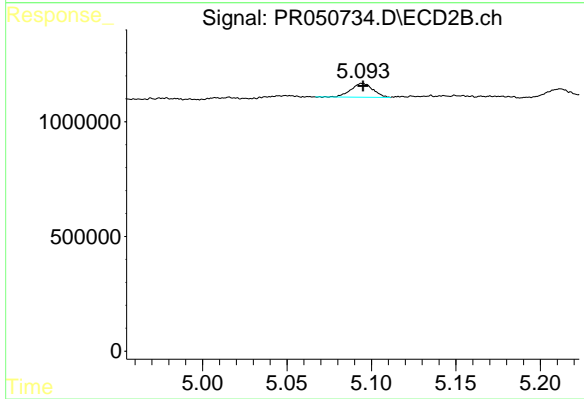
#15 AR-1232-5

R.T.: 5.344 min
 Delta R.T.: -0.006 min
 Response: 2822588
 Conc: 39.22 ng/ml



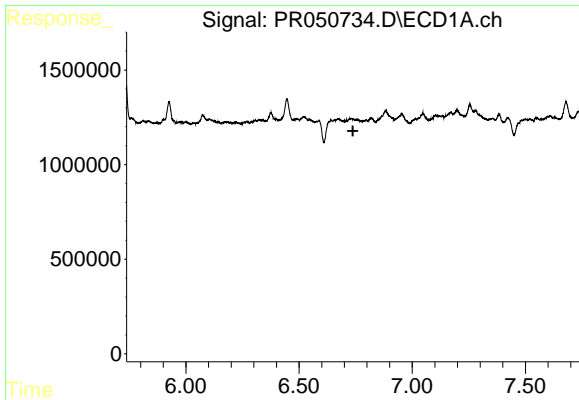
#18 AR-1242-3

R.T.: 5.926 min
 Delta R.T.: 0.027 min
 Response: 1513795
 Conc: 9.33 ng/ml



#18 AR-1242-3

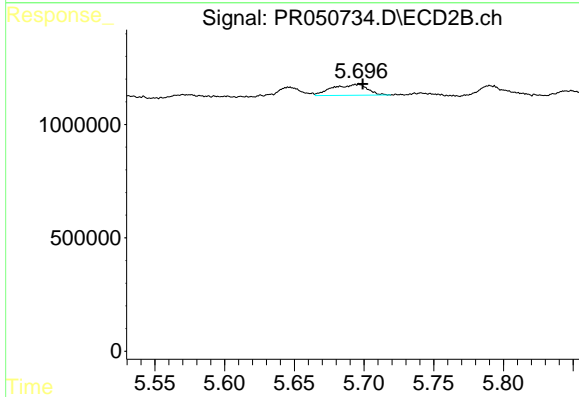
R.T.: 5.095 min
 Delta R.T.: 0.000 min
 Response: 552219
 Conc: 4.16 ng/ml



#20 AR-1242-5

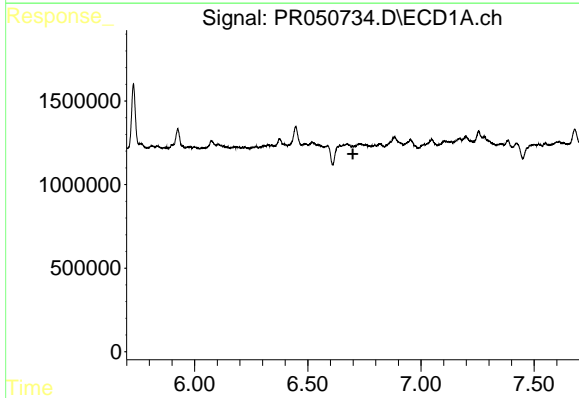
R.T.: 0.000 min
 Exp R.T. : 6.738 min
 Response: 0
 Conc: N.D.

Instrument :
 ECD_O
 ClientSampled :



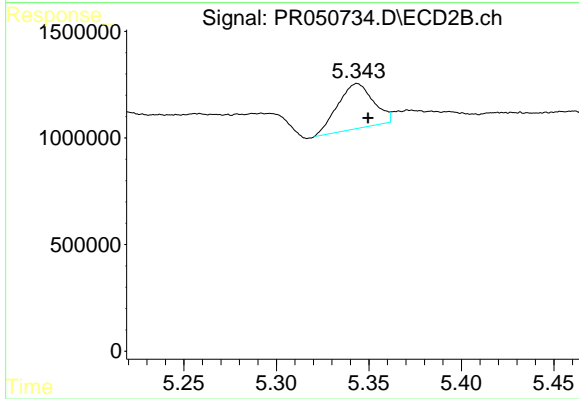
#20 AR-1242-5

R.T.: 5.696 min
 Delta R.T.: -0.003 min
 Response: 845155
 Conc: 4.61 ng/ml



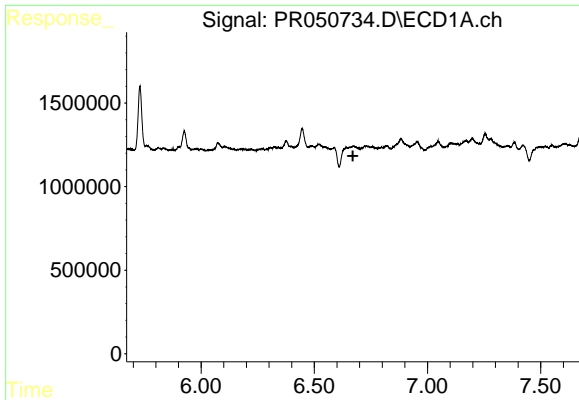
#24 AR-1248-4

R.T.: 0.000 min
 Exp R.T. : 6.699 min
 Response: 0
 Conc: N.D.



#24 AR-1248-4

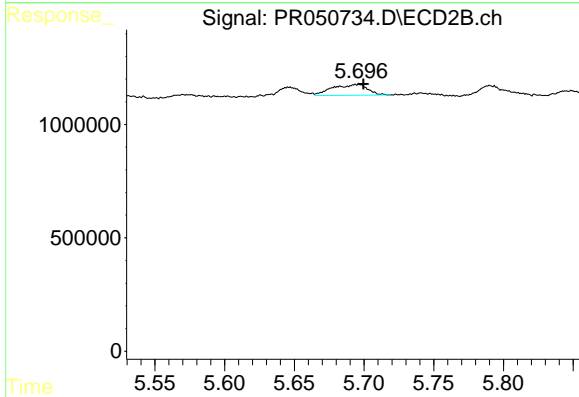
R.T.: 5.344 min
 Delta R.T.: -0.006 min
 Response: 2822588
 Conc: 11.41 ng/ml



#26 AR-1254-1

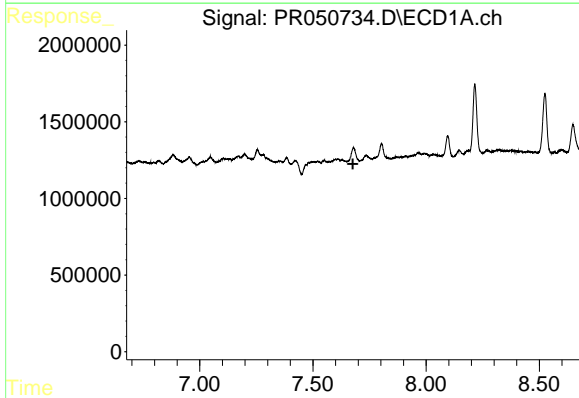
R.T.: 0.000 min
 Exp R.T.: 6.670 min
 Response: 0
 Conc: N.D.

Instrument :
 ECD_O
 ClientSampled :



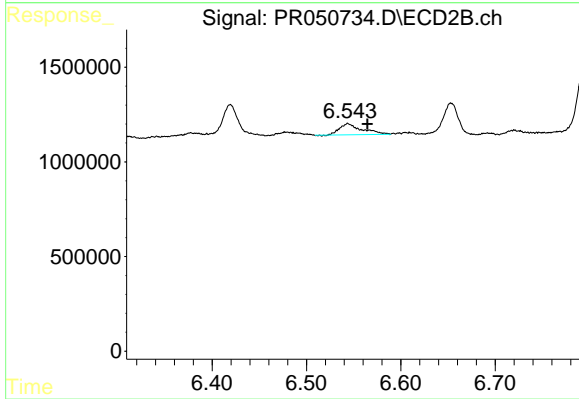
#26 AR-1254-1

R.T.: 5.696 min
 Delta R.T.: -0.003 min
 Response: 845155
 Conc: 2.20 ng/ml



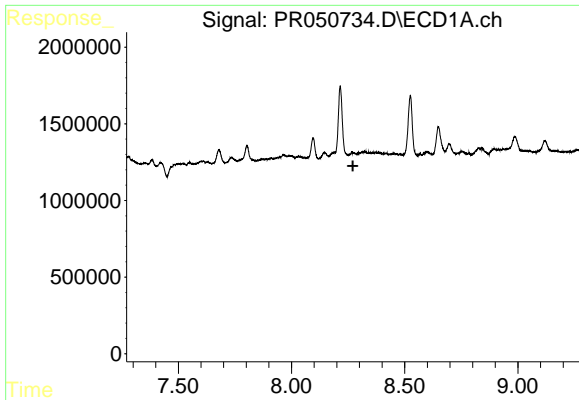
#32 AR-1260-2

R.T.: 0.000 min
 Exp R.T.: 7.676 min
 Response: 0
 Conc: N.D.



#32 AR-1260-2

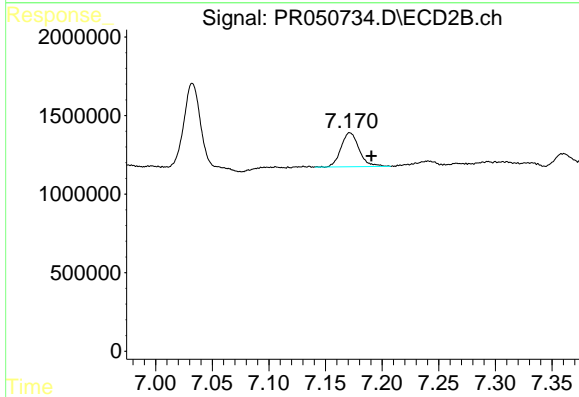
R.T.: 6.544 min
 Delta R.T.: -0.021 min
 Response: 969080
 Conc: 2.06 ng/ml



#34 AR-1260-4

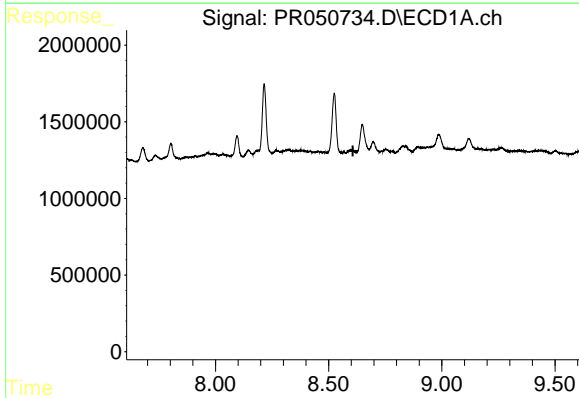
R.T.: 0.000 min
 Exp R.T.: 8.271 min
 Response: 0
 Conc: N.D.

Instrument :
 ECD_O
 ClientSampled :



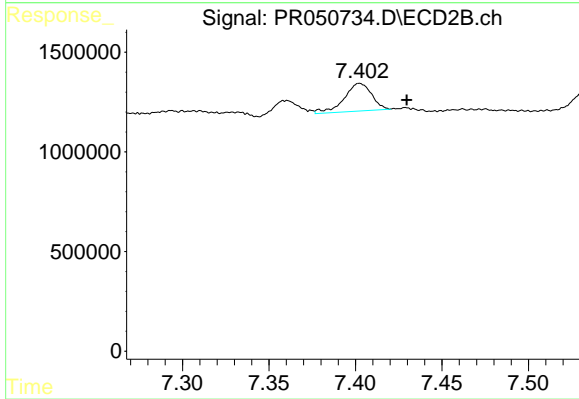
#34 AR-1260-4

R.T.: 7.171 min
 Delta R.T.: -0.019 min
 Response: 2406509
 Conc: 6.19 ng/ml



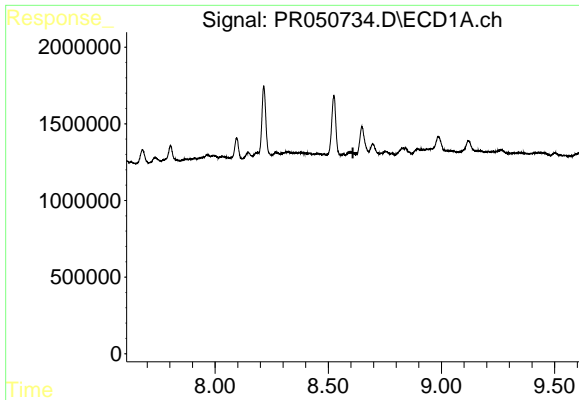
#35 AR-1260-5

R.T.: 0.000 min
 Exp R.T.: 8.607 min
 Response: 0
 Conc: N.D.



#35 AR-1260-5

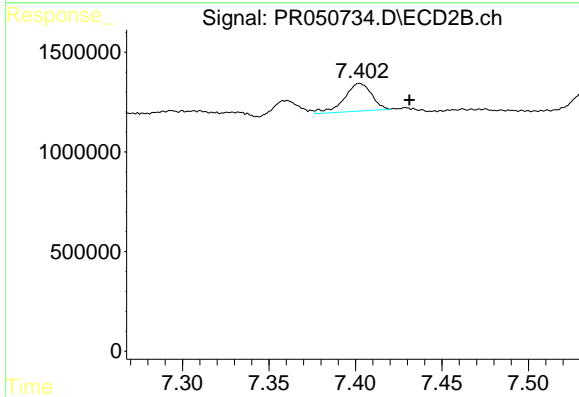
R.T.: 7.402 min
 Delta R.T.: -0.027 min
 Response: 1527936
 Conc: 1.63 ng/ml



#37 AR-1262-2

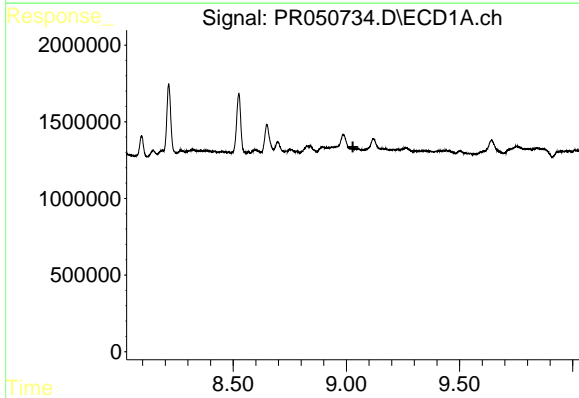
R.T.: 0.000 min
 Exp R.T.: 8.609 min
 Response: 0
 Conc: N.D.

Instrument :
 ECD_O
 ClientSampled :



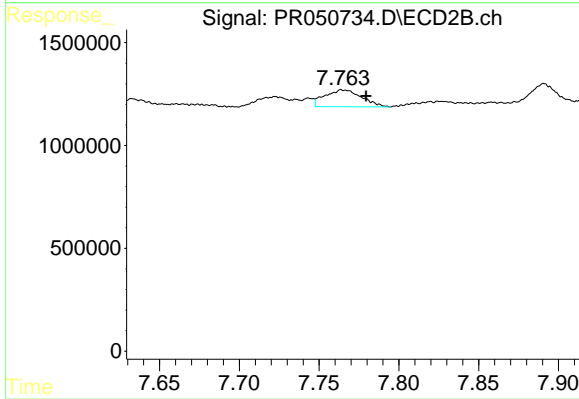
#37 AR-1262-2

R.T.: 7.402 min
 Delta R.T.: -0.029 min
 Response: 1527936
 Conc: 1.43 ng/ml



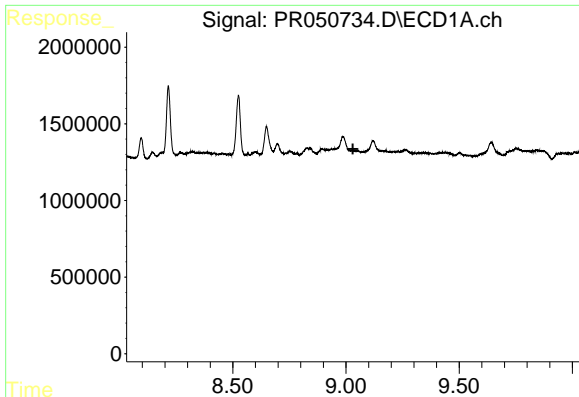
#39 AR-1262-4

R.T.: 0.000 min
 Exp R.T.: 9.029 min
 Response: 0
 Conc: N.D.



#39 AR-1262-4

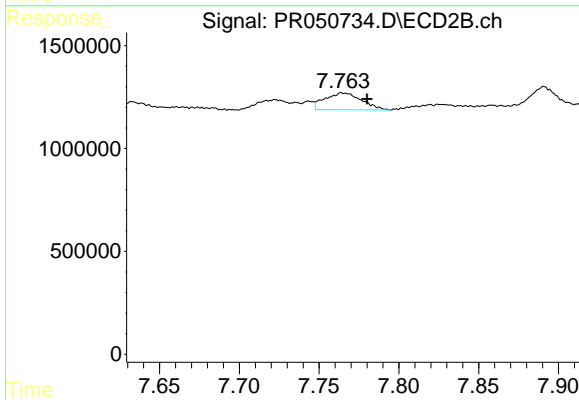
R.T.: 7.764 min
 Delta R.T.: -0.016 min
 Response: 1325615
 Conc: 1.69 ng/ml



#42 AR-1268-2

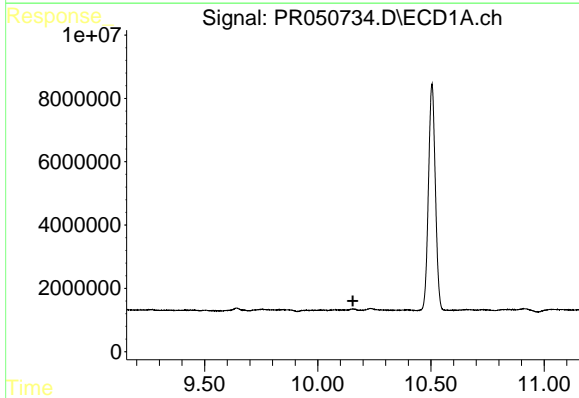
R.T.: 0.000 min
 Exp R.T.: 9.030 min
 Response: 0
 Conc: N.D.

Instrument :
 ECD_O
 ClientSampled :



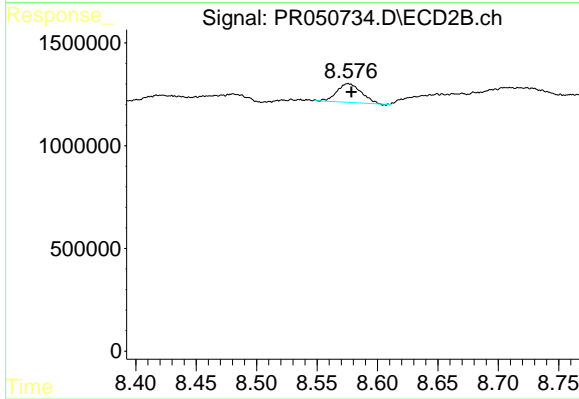
#42 AR-1268-2

R.T.: 7.764 min
 Delta R.T.: -0.016 min
 Response: 1325615
 Conc: 1.21 ng/ml



#45 AR-1268-5

R.T.: 0.000 min
 Exp R.T.: 10.155 min
 Response: 0
 Conc: N.D.



#45 AR-1268-5

R.T.: 8.576 min
 Delta R.T.: -0.003 min
 Response: 1283791
 Conc: 0.44 ng/ml