

Data Path : Z:\pestpcbsrv\HPCHEM1\ECD_R\Data\PR060821\
 Data File : PR050737.D
 Signal(s) : Signal #1: ECD1A.ch Signal #2: ECD2B.ch
 Acq On : 08 Jun 2021 11:35
 Operator : DD\AJ
 Sample : I.BLK
 Misc :
 ALS Vial : 2 Sample Multiplier: 1

Instrument :
 ECD_O
 ClientSampleId :

Integration File signal 1: autoint1.e
 Integration File signal 2: autoint2.e
 Quant Time: Jun 09 02:54:14 2021
 Quant Method : Z:\pestpcbsrv\HPCHEM1\ECD_R\Method\PR060721.M
 Quant Title : GC EXTRACTABLES
 QLast Update : Tue Jun 08 03:02:26 2021
 Response via : Initial Calibration
 Integrator: ChemStation

Volume Inj. : 2 µl
 Signal #1 Phase : ZB-MR2 Signal #2 Phase: ZB-MR2
 Signal #1 Info : 30Mx0.32mmx 0.50µ Signal #2 Info : 30M x 0.32mm x 0.25µm

	Compound	RT#1	RT#2	Resp#1	Resp#2	ng/ml	ng/ml

System Monitoring Compounds							
1)	SA Tetrachlo...	4.634	3.814	133.7E6	131.8E6	20.969	20.330
2)	SA Decachlor...	10.509	8.843	137.1E6	142.3E6	18.532	18.544
Target Compounds							
7)	L1 AR-1016-5	0.000	5.355	0	2006458	N.D.	10.212 #
9)	L2 AR-1221-2	4.946	4.115	1637231	1876531	31.244	36.419
15)	L3 AR-1232-5	6.075	5.355	998237	2006458	17.611	27.878 #
22)	L5 AR-1248-2	6.075	0.000	998237	0	4.756	N.D. #
24)	L5 AR-1248-4	6.680f	5.355	2364236	2006458	8.357	8.109
26)	L6 AR-1254-1	6.680	0.000	2364236	0	8.596	N.D. #
28)	L6 AR-1254-3	7.284f	0.000	1554348	0	3.240	N.D. #
29)	L6 AR-1254-4	0.000	6.454f	0	679414	N.D.	1.967 #
30)	L6 AR-1254-5	0.000	6.892	0	702958	N.D.	1.299 #
31)	L7 AR-1260-1	0.000	6.368	0	893218	N.D.	2.256 #
32)	L7 AR-1260-2	0.000	6.545f	0	1849929	N.D.	3.930 #
35)	L7 AR-1260-5	0.000	7.425	0	1259055	N.D.	1.347 #
36)	L8 AR-1262-1	0.000	6.892	0	702958	N.D.	2.494 #
37)	L8 AR-1262-2	0.000	7.425	0	1259055	N.D.	1.182 #
39)	L8 AR-1262-4	0.000	7.750f	0	7387441	N.D.	9.406 #
42)	L9 AR-1268-2	0.000	7.750f	0	7387441	N.D.	6.760 #
45)	L9 AR-1268-5	0.000	8.579	0	880636	N.D.	0.303 #

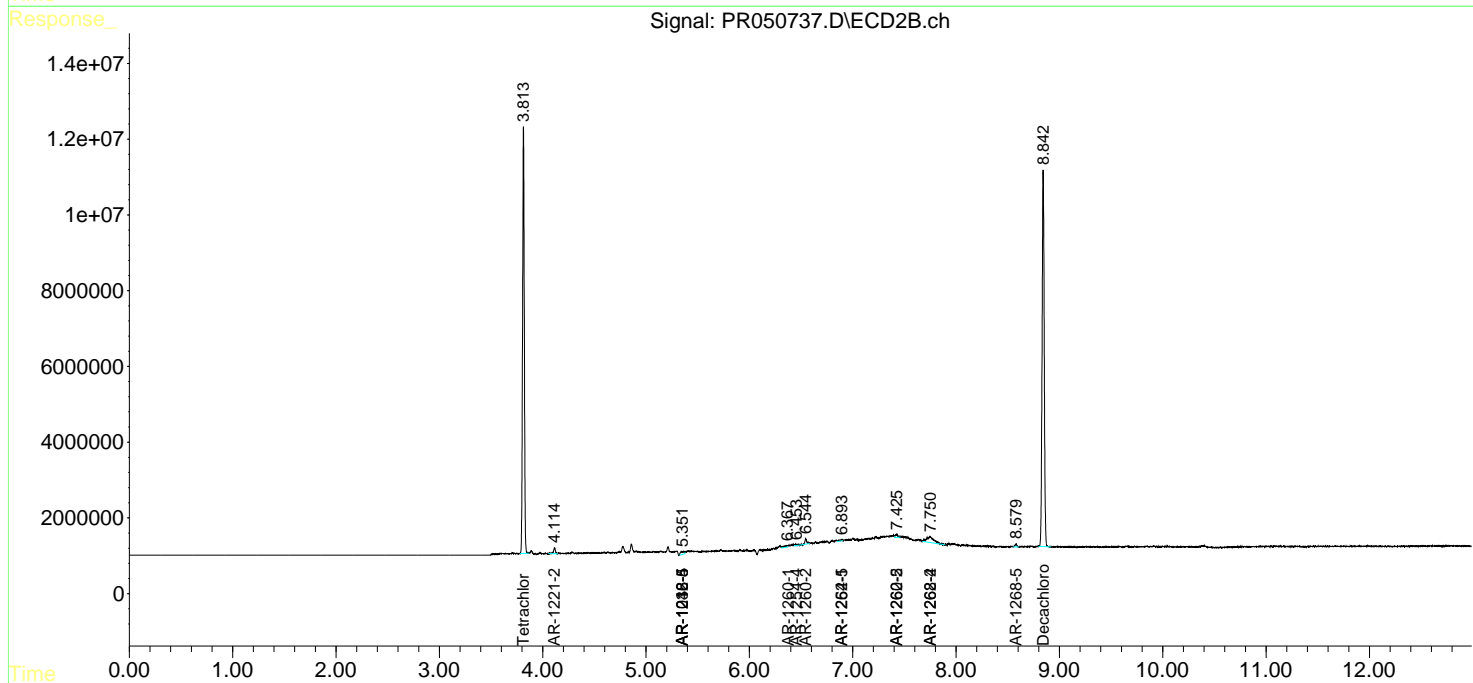
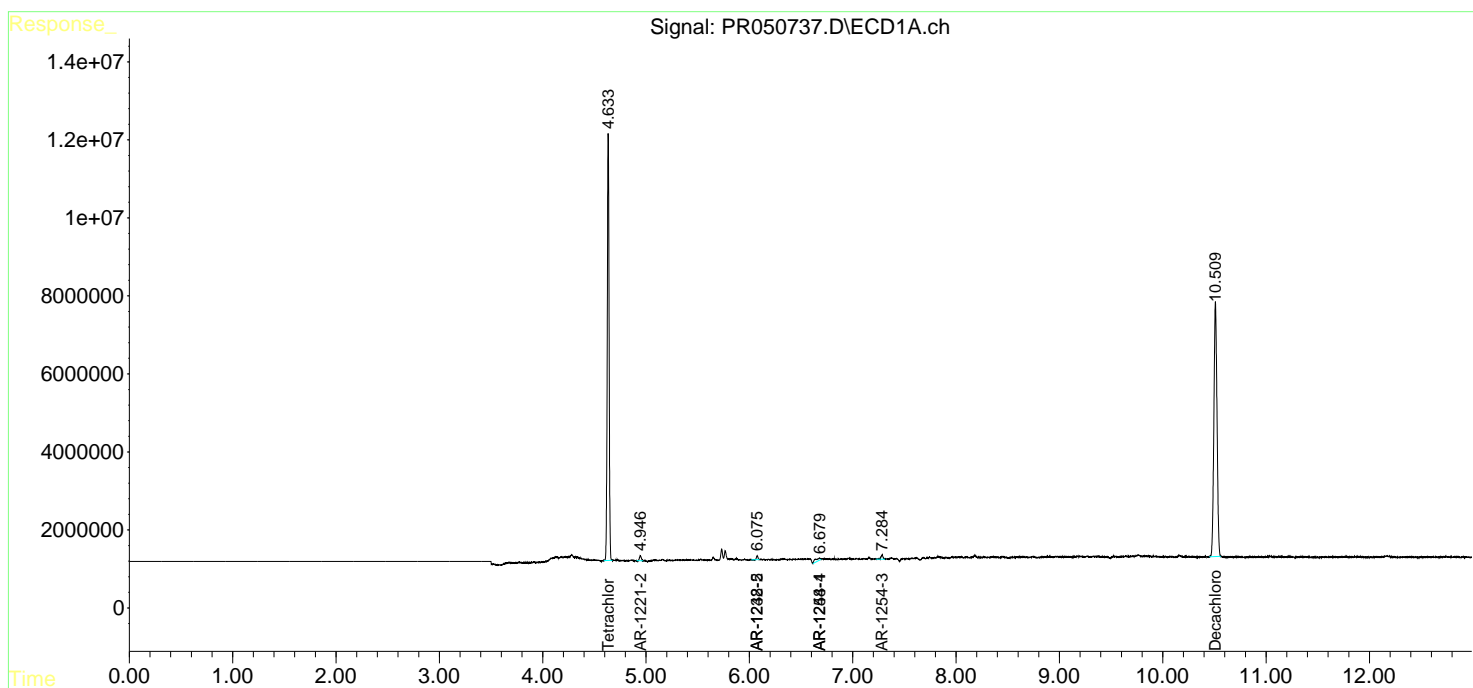
(f)=RT Delta > 1/2 Window (#)=Amounts differ by > 25% (m)=manual int.

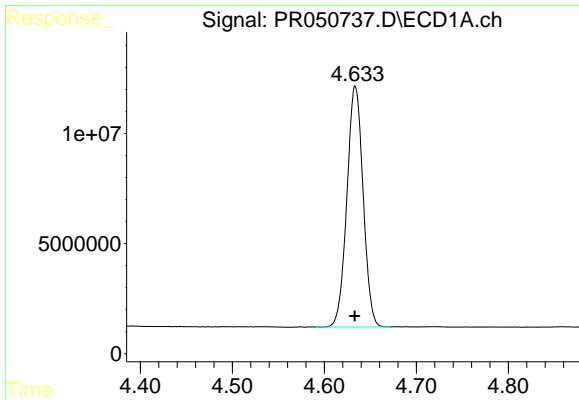
Data Path : Z:\pestpcbsrv\HPCHEM1\ECD_R\Data\PR060821\
 Data File : PR050737.D
 Signal(s) : Signal #1: ECD1A.ch Signal #2: ECD2B.ch
 Acq On : 08 Jun 2021 11:35
 Operator : DD\AJ
 Sample : I.BLK
 Misc :
 ALS Vial : 2 Sample Multiplier: 1

Instrument :
 ECD_O
 ClientSampled :

Integration File signal 1: autoint1.e
 Integration File signal 2: autoint2.e
 Quant Time: Jun 09 02:54:14 2021
 Quant Method : Z:\pestpcbsrv\HPCHEM1\ECD_R\Method\PR060721.M
 Quant Title : GC EXTRACTABLES
 QLast Update : Tue Jun 08 03:02:26 2021
 Response via : Initial Calibration
 Integrator: ChemStation

Volume Inj. : 2 µl
 Signal #1 Phase : ZB-MR1 Signal #2 Phase: ZB-MR2
 Signal #1 Info : 30Mx0.32mmx 0.50µ Signal #2 Info : 30M x 0.32mm x 0.25µm

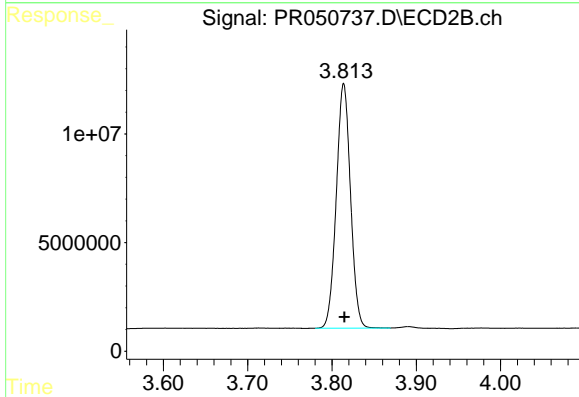




#1 Tetrachloro-m-xylene

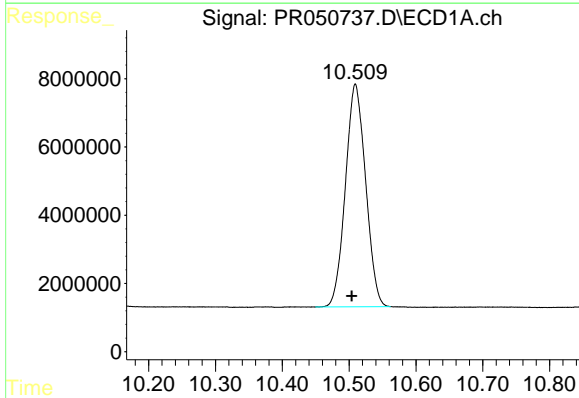
R.T.: 4.634 min
 Delta R.T.: 0.000 min
 Response: 133719335
 Conc: 20.97 ng/ml

Instrument :
 ECD_O
 ClientSampleId :



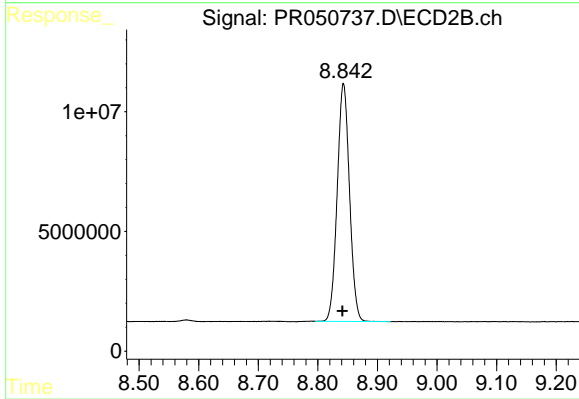
#1 Tetrachloro-m-xylene

R.T.: 3.814 min
 Delta R.T.: 0.000 min
 Response: 131828292
 Conc: 20.33 ng/ml



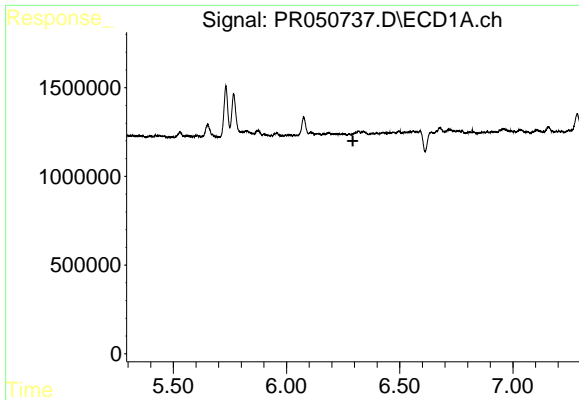
#2 Decachlorobiphenyl

R.T.: 10.509 min
 Delta R.T.: 0.006 min
 Response: 137098463
 Conc: 18.53 ng/ml



#2 Decachlorobiphenyl

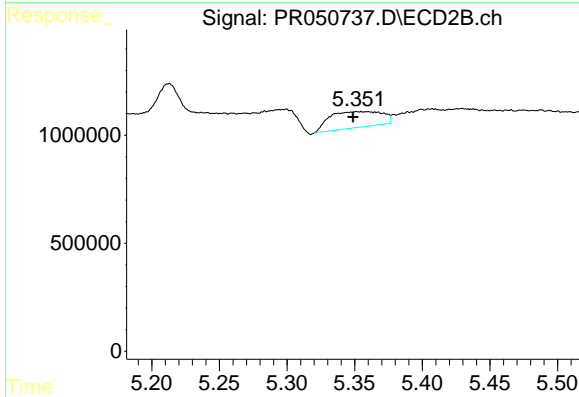
R.T.: 8.843 min
 Delta R.T.: 0.002 min
 Response: 142261717
 Conc: 18.54 ng/ml



#7 AR-1016-5

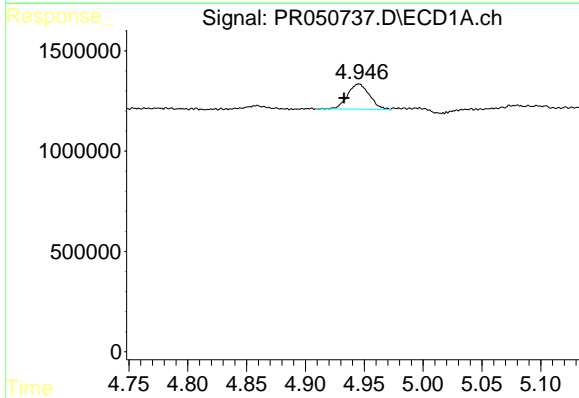
R.T.: 0.000 min
 Exp R.T.: 6.293 min
 Response: 0
 Conc: N.D.

Instrument :
 ECD_O
 ClientSampleId :



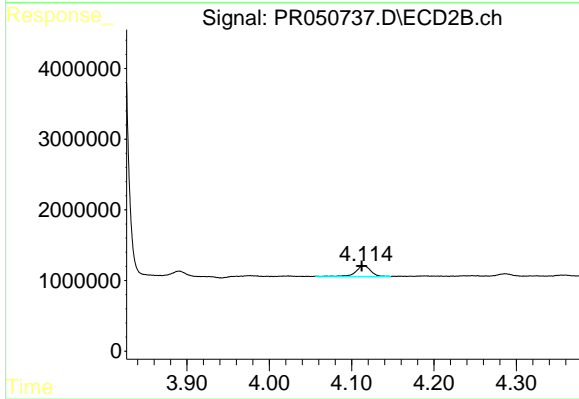
#7 AR-1016-5

R.T.: 5.355 min
 Delta R.T.: 0.006 min
 Response: 2006458
 Conc: 10.21 ng/ml



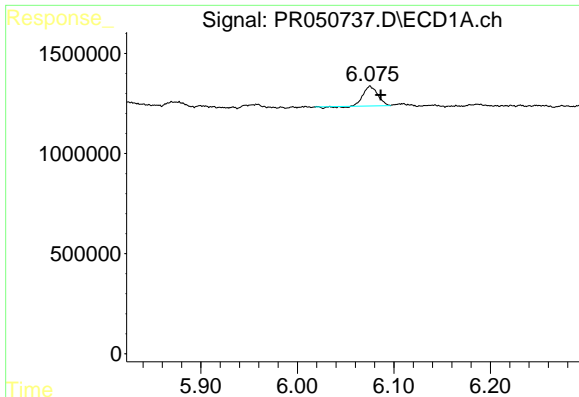
#9 AR-1221-2

R.T.: 4.946 min
 Delta R.T.: 0.012 min
 Response: 1637231
 Conc: 31.24 ng/ml



#9 AR-1221-2

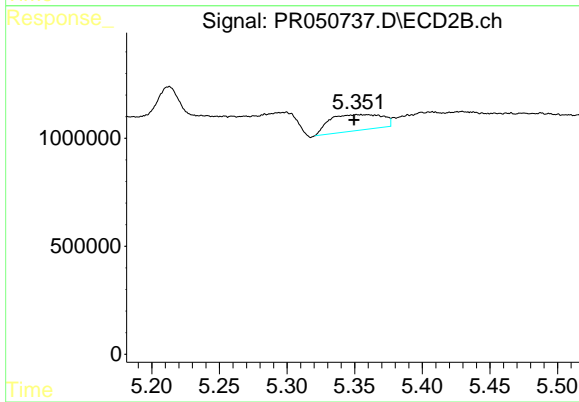
R.T.: 4.115 min
 Delta R.T.: 0.003 min
 Response: 1876531
 Conc: 36.42 ng/ml



#15 AR-1232-5

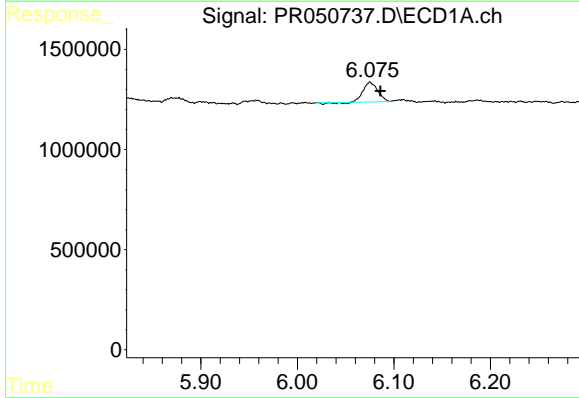
R.T.: 6.075 min
 Delta R.T.: -0.011 min
 Response: 998237
 Conc: 17.61 ng/ml

Instrument :
 ECD_O
 ClientSampleId :



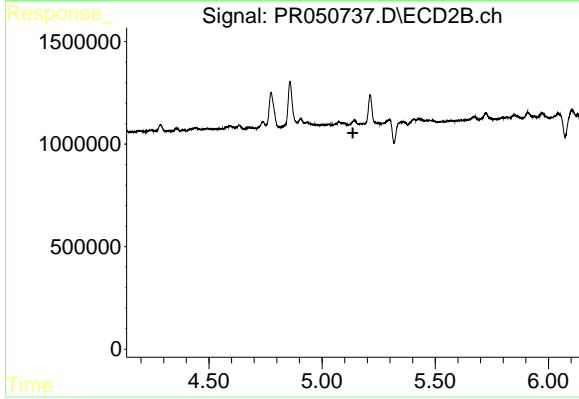
#15 AR-1232-5

R.T.: 5.355 min
 Delta R.T.: 0.005 min
 Response: 2006458
 Conc: 27.88 ng/ml



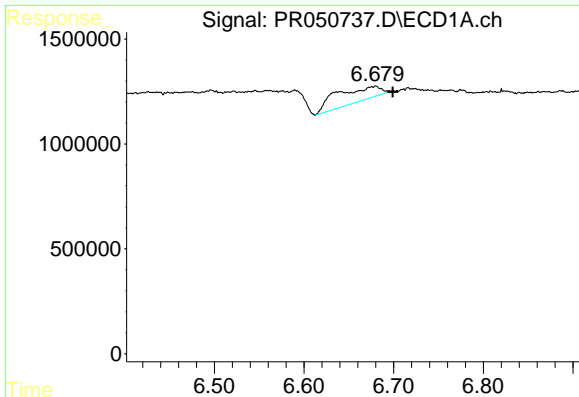
#22 AR-1248-2

R.T.: 6.075 min
 Delta R.T.: -0.011 min
 Response: 998237
 Conc: 4.76 ng/ml



#22 AR-1248-2

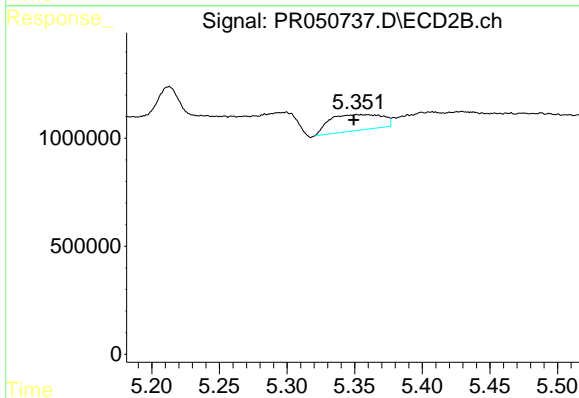
R.T.: 0.000 min
 Exp R.T. : 5.136 min
 Response: 0
 Conc: N.D.



#24 AR-1248-4

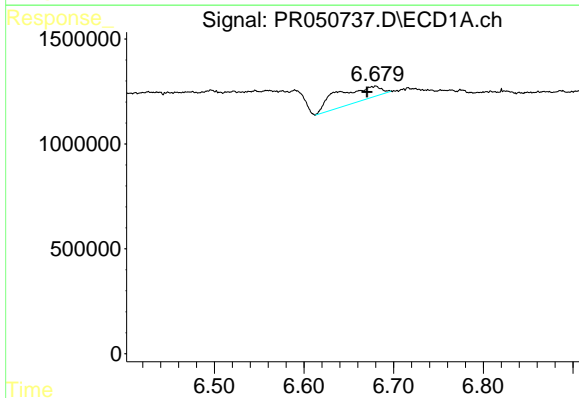
R.T.: 6.680 min
 Delta R.T.: -0.019 min
 Response: 2364236
 Conc: 8.36 ng/ml

Instrument :
 ECD_O
 ClientSampled :



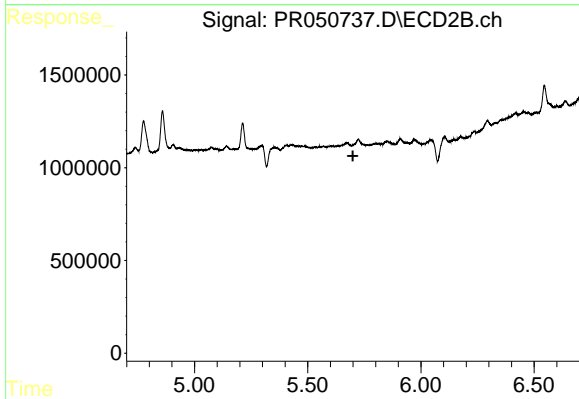
#24 AR-1248-4

R.T.: 5.355 min
 Delta R.T.: 0.005 min
 Response: 2006458
 Conc: 8.11 ng/ml



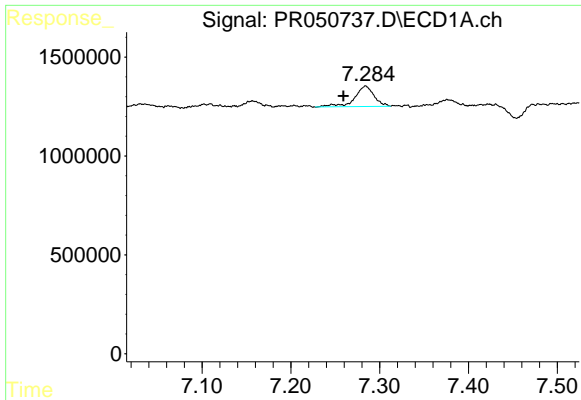
#26 AR-1254-1

R.T.: 6.680 min
 Delta R.T.: 0.010 min
 Response: 2364236
 Conc: 8.60 ng/ml



#26 AR-1254-1

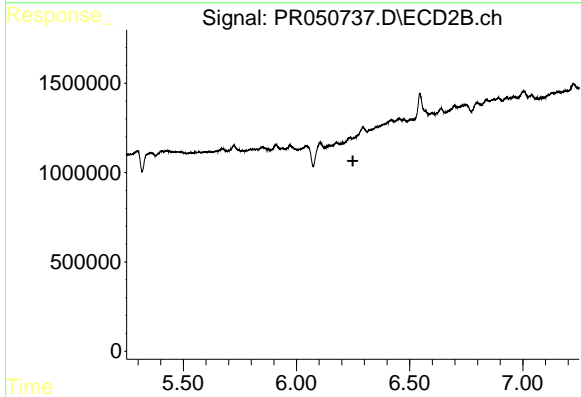
R.T.: 0.000 min
 Exp R.T.: 5.699 min
 Response: 0
 Conc: N.D.



#28 AR-1254-3

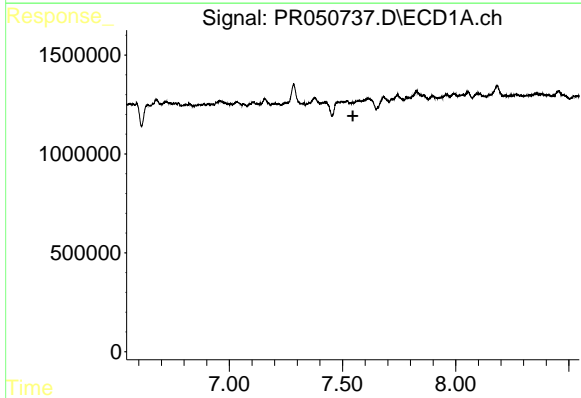
R.T.: 7.284 min
 Delta R.T.: 0.025 min
 Response: 1554348
 Conc: 3.24 ng/ml

Instrument :
 ECD_O
 ClientSampled :



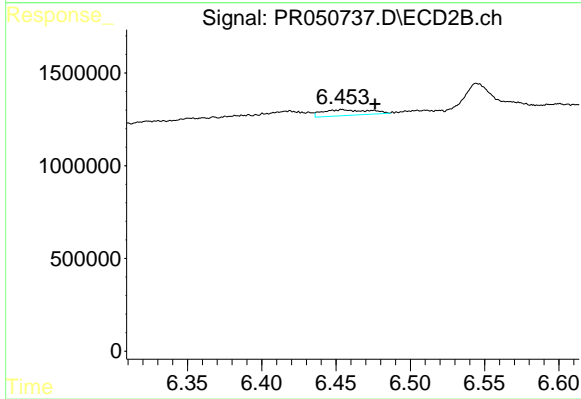
#28 AR-1254-3

R.T.: 0.000 min
 Exp R.T. : 6.249 min
 Response: 0
 Conc: N.D.



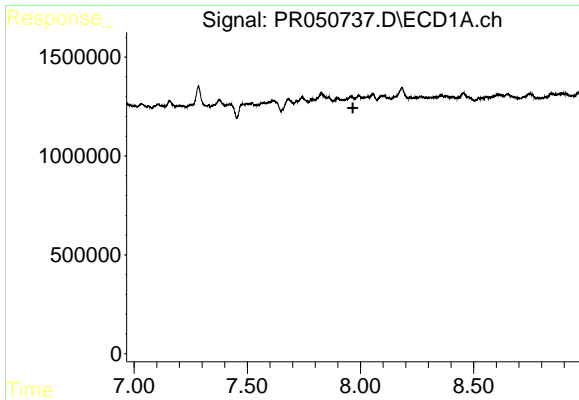
#29 AR-1254-4

R.T.: 0.000 min
 Exp R.T. : 7.546 min
 Response: 0
 Conc: N.D.



#29 AR-1254-4

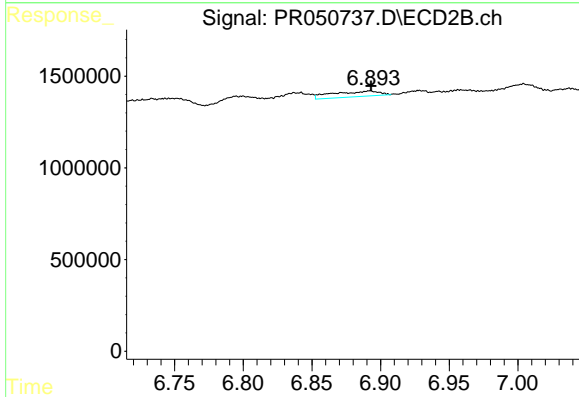
R.T.: 6.454 min
 Delta R.T.: -0.022 min
 Response: 679414
 Conc: 1.97 ng/ml



#30 AR-1254-5

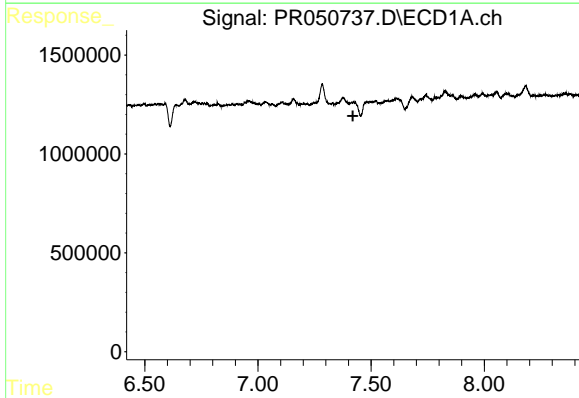
R.T.: 0.000 min
 Exp R.T.: 7.966 min
 Response: 0
 Conc: N.D.

Instrument :
 ECD_O
 ClientSampled :



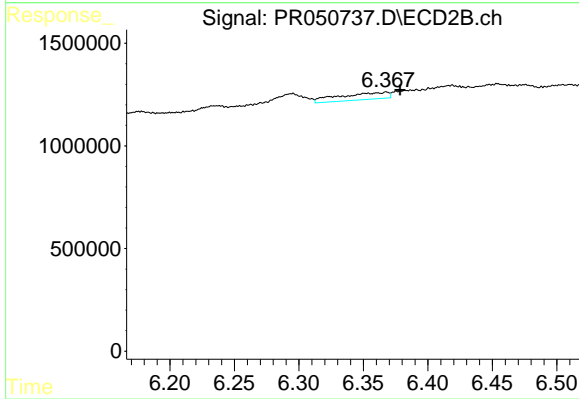
#30 AR-1254-5

R.T.: 6.892 min
 Delta R.T.: 0.000 min
 Response: 702958
 Conc: 1.30 ng/ml



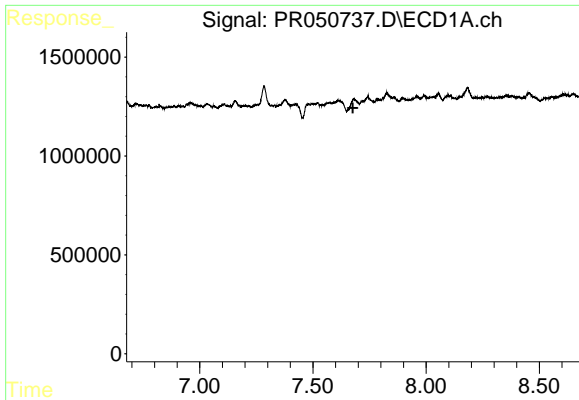
#31 AR-1260-1

R.T.: 0.000 min
 Exp R.T.: 7.420 min
 Response: 0
 Conc: N.D.



#31 AR-1260-1

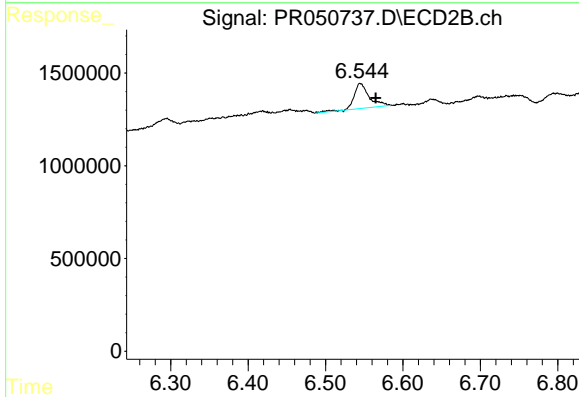
R.T.: 6.368 min
 Delta R.T.: -0.011 min
 Response: 893218
 Conc: 2.26 ng/ml



#32 AR-1260-2

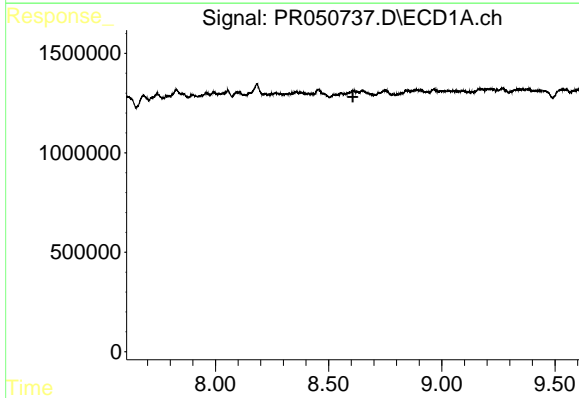
R.T.: 0.000 min
 Exp R.T.: 7.676 min
 Response: 0
 Conc: N.D.

Instrument :
 ECD_O
 ClientSampleId :



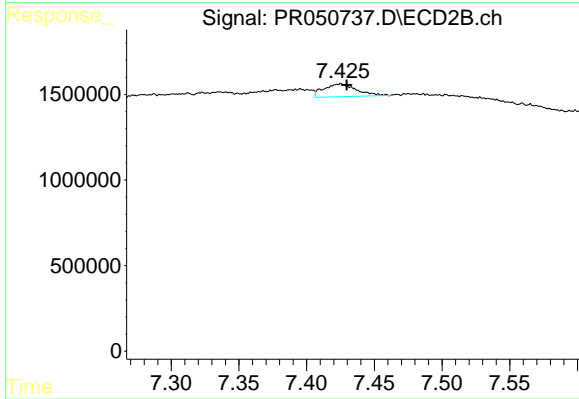
#32 AR-1260-2

R.T.: 6.545 min
 Delta R.T.: -0.020 min
 Response: 1849929
 Conc: 3.93 ng/ml



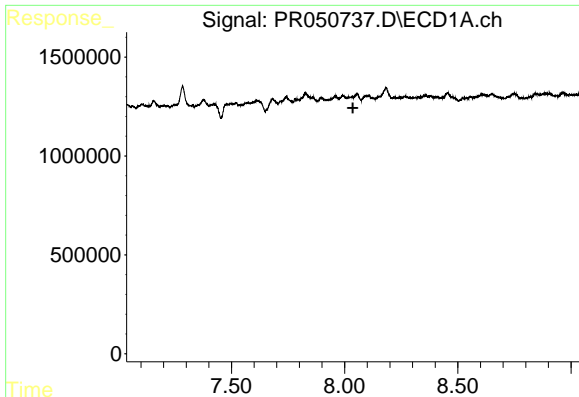
#35 AR-1260-5

R.T.: 0.000 min
 Exp R.T.: 8.607 min
 Response: 0
 Conc: N.D.



#35 AR-1260-5

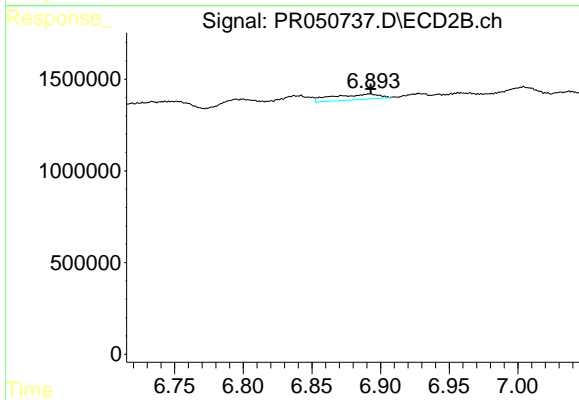
R.T.: 7.425 min
 Delta R.T.: -0.004 min
 Response: 1259055
 Conc: 1.35 ng/ml



#36 AR-1262-1

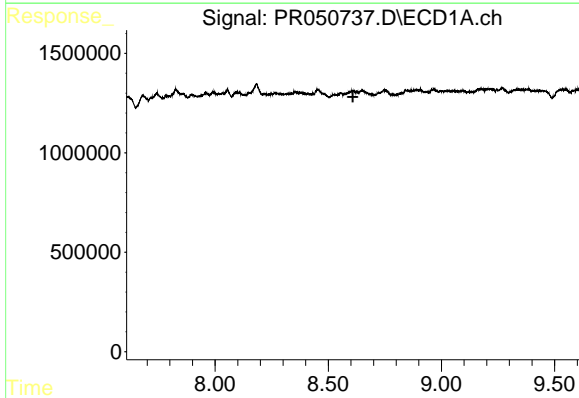
R.T.: 0.000 min
 Exp R.T. : 8.036 min
 Response: 0
 Conc: N.D.

Instrument :
 ECD_O
 ClientSampleId :



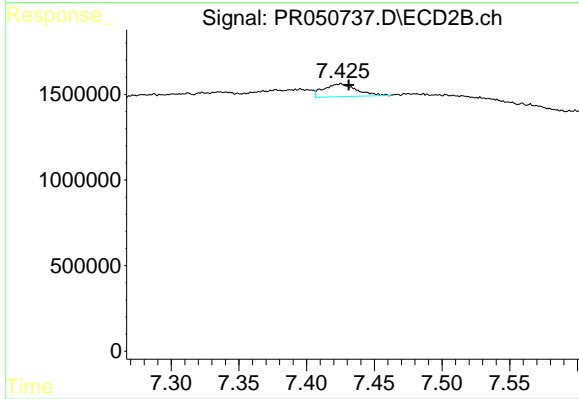
#36 AR-1262-1

R.T.: 6.892 min
 Delta R.T.: 0.000 min
 Response: 702958
 Conc: 2.49 ng/ml



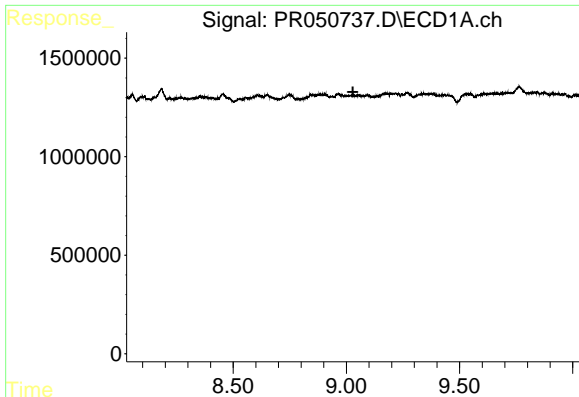
#37 AR-1262-2

R.T.: 0.000 min
 Exp R.T. : 8.609 min
 Response: 0
 Conc: N.D.



#37 AR-1262-2

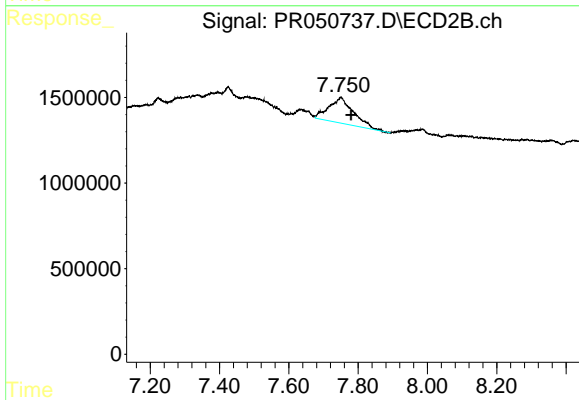
R.T.: 7.425 min
 Delta R.T.: -0.006 min
 Response: 1259055
 Conc: 1.18 ng/ml



#39 AR-1262-4

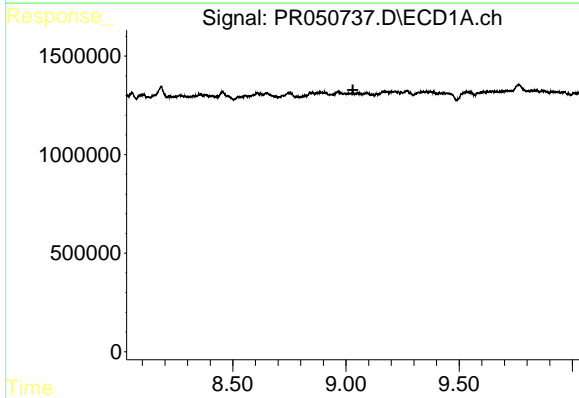
R.T.: 0.000 min
 Exp R.T. : 9.029 min
 Response: 0
 Conc: N.D.

Instrument :
 ECD_O
 ClientSampleId :



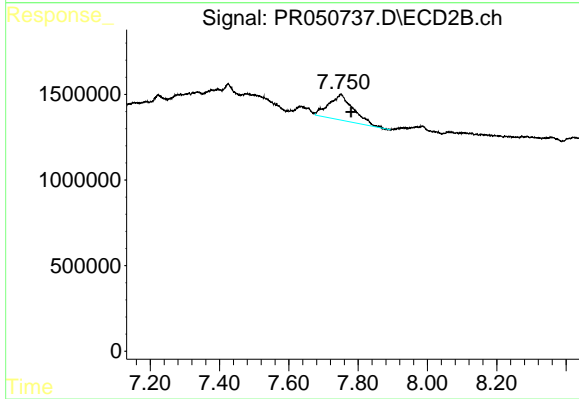
#39 AR-1262-4

R.T.: 7.750 min
 Delta R.T.: -0.029 min
 Response: 7387441
 Conc: 9.41 ng/ml



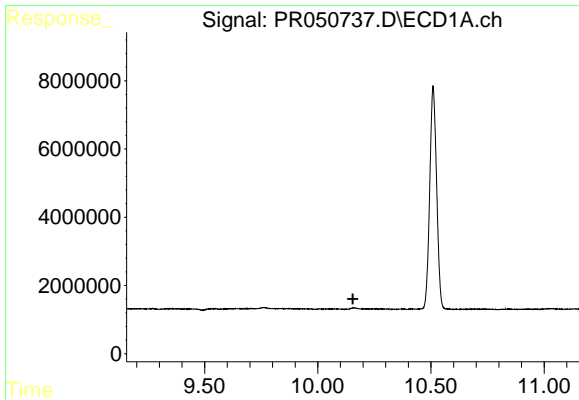
#42 AR-1268-2

R.T.: 0.000 min
 Exp R.T. : 9.030 min
 Response: 0
 Conc: N.D.



#42 AR-1268-2

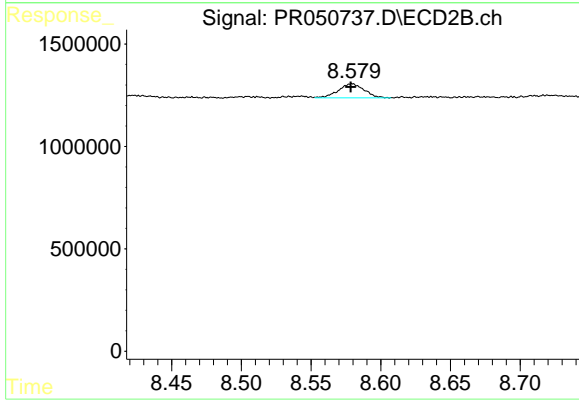
R.T.: 7.750 min
 Delta R.T.: -0.030 min
 Response: 7387441
 Conc: 6.76 ng/ml



#45 AR-1268-5

R.T.: 0.000 min
 Exp R.T. : 10.155 min
 Response: 0
 Conc: N.D.

Instrument :
 ECD_O
 ClientSampleId :



#45 AR-1268-5

R.T.: 8.579 min
 Delta R.T.: 0.000 min
 Response: 880636
 Conc: 0.30 ng/ml