

Data Path : Z:\pestpcbsrv\HPCHEM1\ECD_O\Data\P0060921\
 Data File : P0078577.D
 Signal(s) : Signal #1: ECD1A.CH Signal #2: ECD2B.CH
 Acq On : 09 Jun 2021 12:15
 Operator : DD\AJ
 Sample : I.BLK
 Misc :
 ALS Vial : 2 Sample Multiplier: 1

Instrument :
 ECD_O
 ClientSampleId :
 I.BLK

Integration File signal 1: autoint1.e
 Integration File signal 2: autoint2.e
 Quant Time: Jun 09 18:48:23 2021
 Quant Method : Z:\pestpcbsrv\HPCHEM1\ECD_O\methods\P0060721.M
 Quant Title : GC EXTRACTABLES
 QLast Update : Tue Jun 08 05:39:51 2021
 Response via : Initial Calibration
 Integrator: ChemStation 6890 Scale Mode: Small noise peaks clipped

Volume Inj. : 2 µl
 Signal #1 Phase : ZB-MR1 Signal #2 Phase: ZB-MR2
 Signal #1 Info : 30Mx0.32mmx 0.50µ Signal #2 Info : 30M x 0.32mm x 0.25µm

Compound	RT#1	RT#2	Resp#1	Resp#2	ng/ml	ng/ml
----------	------	------	--------	--------	-------	-------

 System Monitoring Compounds

1) SA Tetrachlo...	4.338	3.615	1548243	680049	20.270	21.525
2) SA Decachlor...	9.948	8.800	939815	573994	23.178	23.871

Target Compounds

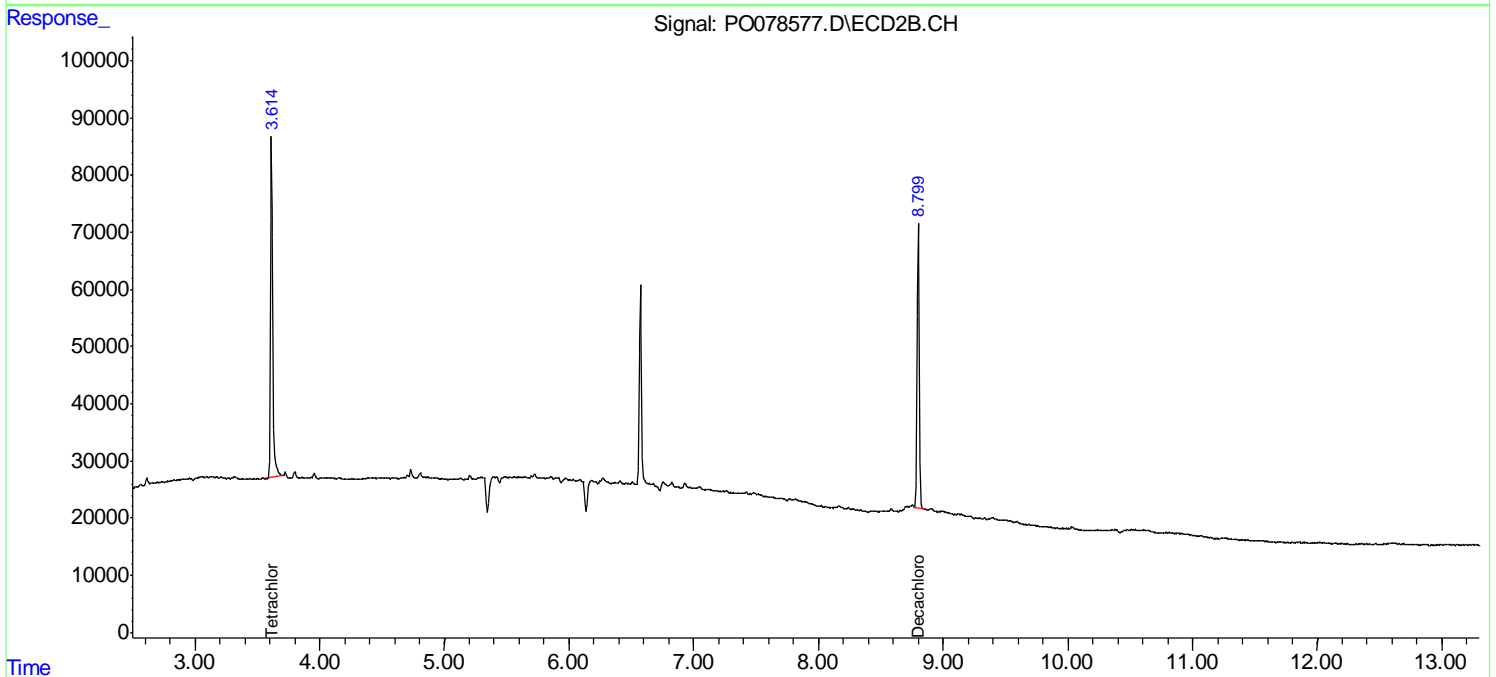
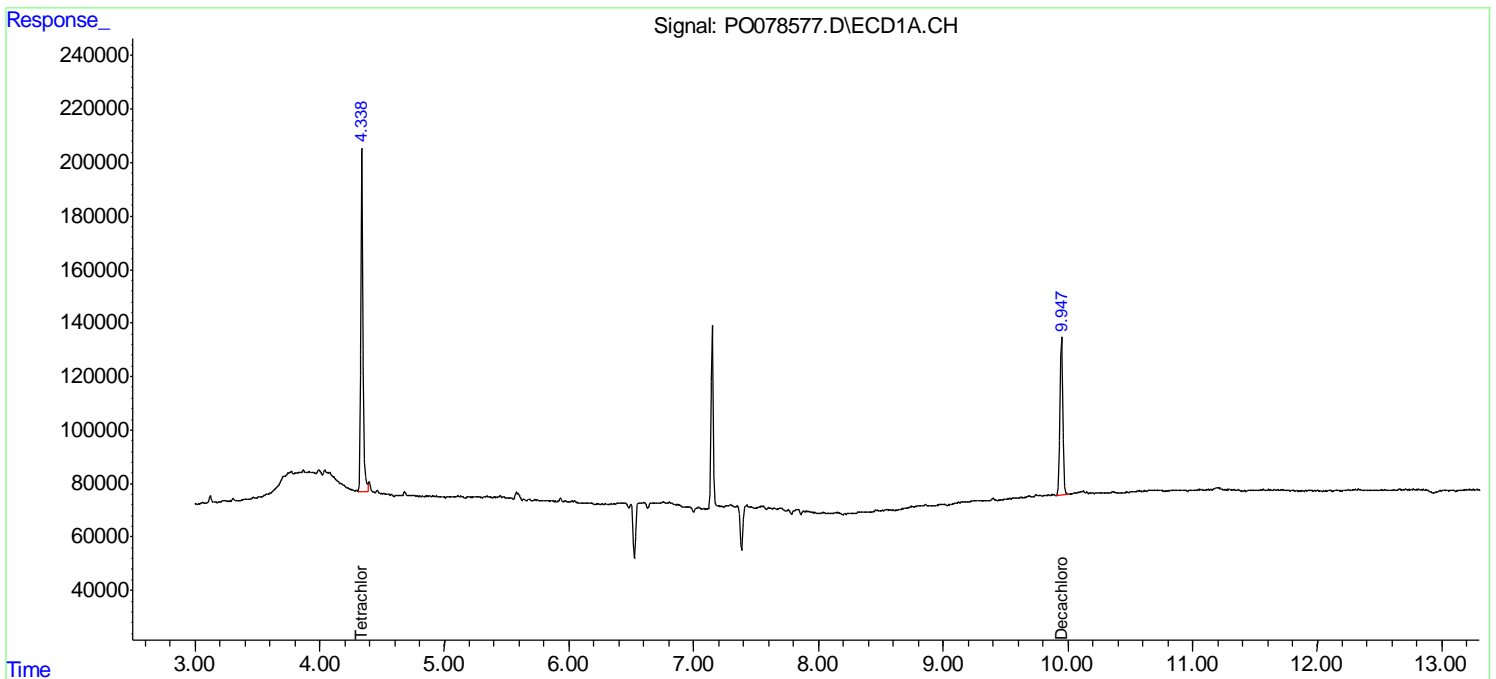
(f)=RT Delta > 1/2 Window (#)=Amounts differ by > 25% (m)=manual int.

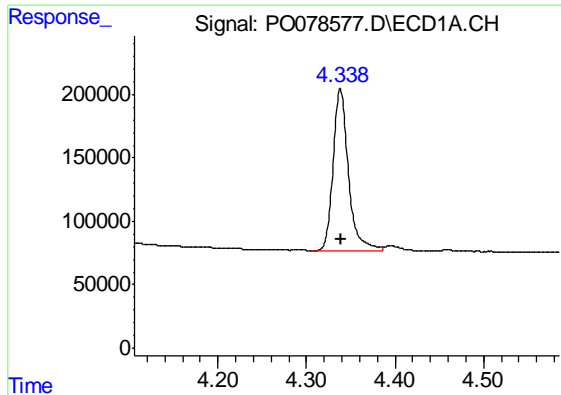
Data Path : Z:\pestpcbsrv\HPCHEM1\ECD_O\Data\PO060921\
 Data File : PO078577.D
 Signal(s) : Signal #1: ECD1A.CH Signal #2: ECD2B.CH
 Acq On : 09 Jun 2021 12:15
 Operator : DD\AJ
 Sample : I.BLK
 Misc :
 ALS Vial : 2 Sample Multiplier: 1

Instrument :
 ECD_O
 ClientSampled :
 I.BLK

Integration File signal 1: autoint1.e
 Integration File signal 2: autoint2.e
 Quant Time: Jun 09 18:48:23 2021
 Quant Method : Z:\pestpcbsrv\HPCHEM1\ECD_O\methods\PO060721.M
 Quant Title : GC EXTRACTABLES
 QLast Update : Tue Jun 08 05:39:51 2021
 Response via : Initial Calibration
 Integrator: ChemStation 6890 Scale Mode: Small noise peaks clipped

Volume Inj. : 2 µl
 Signal #1 Phase : ZB-MR1 Signal #2 Phase: ZB-MR2
 Signal #1 Info : 30Mx0.32mmx 0.50µ Signal #2 Info : 30M x 0.32mm x 0.25µm

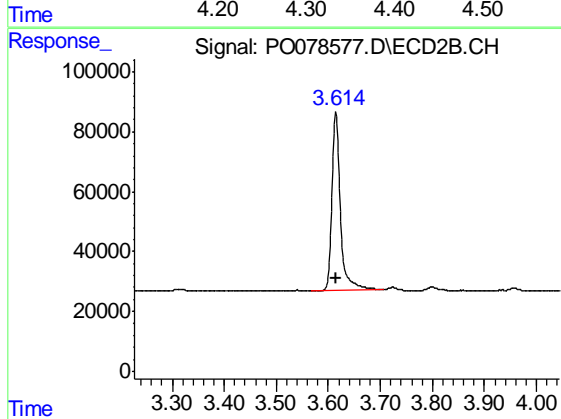




#1 Tetrachloro-m-xylene

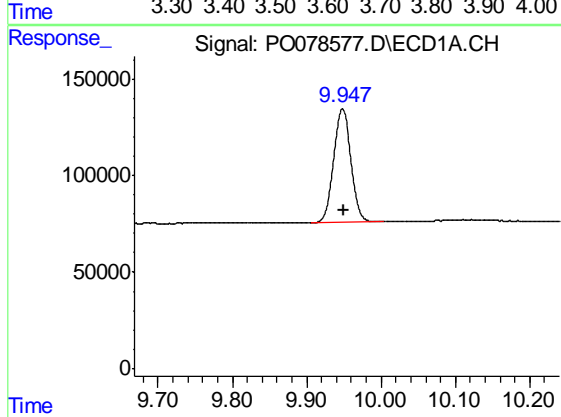
R.T.: 4.338 min
 Delta R.T.: 0.000 min
 Response: 1548243
 Conc: 20.27 ng/ml

Instrument :
 ECD_O
 ClientSampled :
 I.BLK



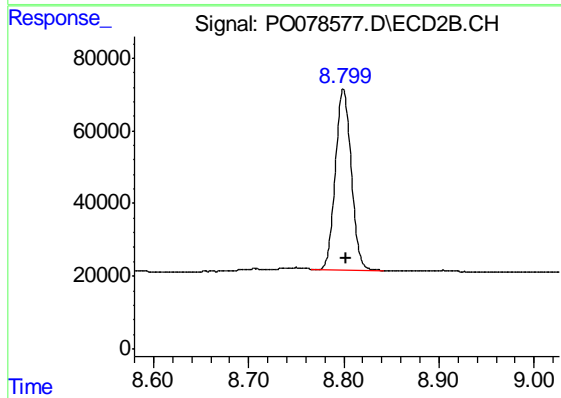
#1 Tetrachloro-m-xylene

R.T.: 3.615 min
 Delta R.T.: 0.000 min
 Response: 680049
 Conc: 21.53 ng/ml



#2 Decachlorobiphenyl

R.T.: 9.948 min
 Delta R.T.: -0.002 min
 Response: 939815
 Conc: 23.18 ng/ml



#2 Decachlorobiphenyl

R.T.: 8.800 min
 Delta R.T.: -0.003 min
 Response: 573994
 Conc: 23.87 ng/ml