

Data Path : Z:\pestpcbsrv\HPCHEM1\ECD_0\Data\P0060921\
 Data File : P0078582.D
 Signal(s) : Signal #1: ECD1A.CH Signal #2: ECD2B.CH
 Acq On : 09 Jun 2021 14:06
 Operator : DD\AJ
 Sample : M2644-03
 Misc :
 ALS Vial : 12 Sample Multiplier: 1

Instrument :
 ECD_0
 ClientSampled :
 1894-1900

Manual Integrations
 APPROVED

Ankita
 6/10/2021 3:18:16 PM

Integration File signal 1: autoint1.e
 Integration File signal 2: autoint2.e
 Quant Time: Jun 10 02:02:47 2021
 Quant Method : Z:\pestpcbsrv\HPCHEM1\ECD_0\methods\P0060721.M
 Quant Title : GC EXTRACTABLES
 QLast Update : Tue Jun 08 05:39:51 2021
 Response via : Initial Calibration
 Integrator: ChemStation 6890 Scale Mode: Small noise peaks clipped

Volume Inj. : 2 µl
 Signal #1 Phase : ZB-MR1 Signal #2 Phase: ZB-MR2
 Signal #1 Info : 30Mx0.32mmx 0.50µ Signal #2 Info : 30M x 0.32mm x 0.25µm

Compound	RT#1	RT#2	Resp#1	Resp#2	ng/ml	ng/ml

System Monitoring Compounds						
1) SA Tetrachlo...	4.337	3.613	1508216	730605	19.746m	23.126
2) SA Decachlor...	9.944	8.797	941412	619799	23.217m	25.776m
Target Compounds						
21) L5 AR-1248-1	5.633	4.841	115827	36415	85.191	56.347 #
22) L5 AR-1248-2	5.923	5.100	801383	340551	412.720	349.258
23) L5 AR-1248-3	6.134	5.142	536480	284370	237.380	293.102
24) L5 AR-1248-4	6.556	5.324	991186	266425	418.374m	230.005 #
25) L5 AR-1248-5	6.594	5.739	1167100	529950	501.515m	483.356
26) L6 AR-1254-1	6.524	5.697	840848	728504	332.265m	422.092 #
27) L6 AR-1254-2	6.754	5.855	1583249	429781	398.688m	268.028 #
28) L6 AR-1254-3	7.128	6.267	1494576	816807	359.825m	341.389
29) L6 AR-1254-4	7.422	6.505	463547	346005	157.653	236.437 #
30) L6 AR-1254-5	7.844	6.928	578483	552843	180.412m	242.489 #

(f)=RT Delta > 1/2 Window (#)=Amounts differ by > 25% (m)=manual int.

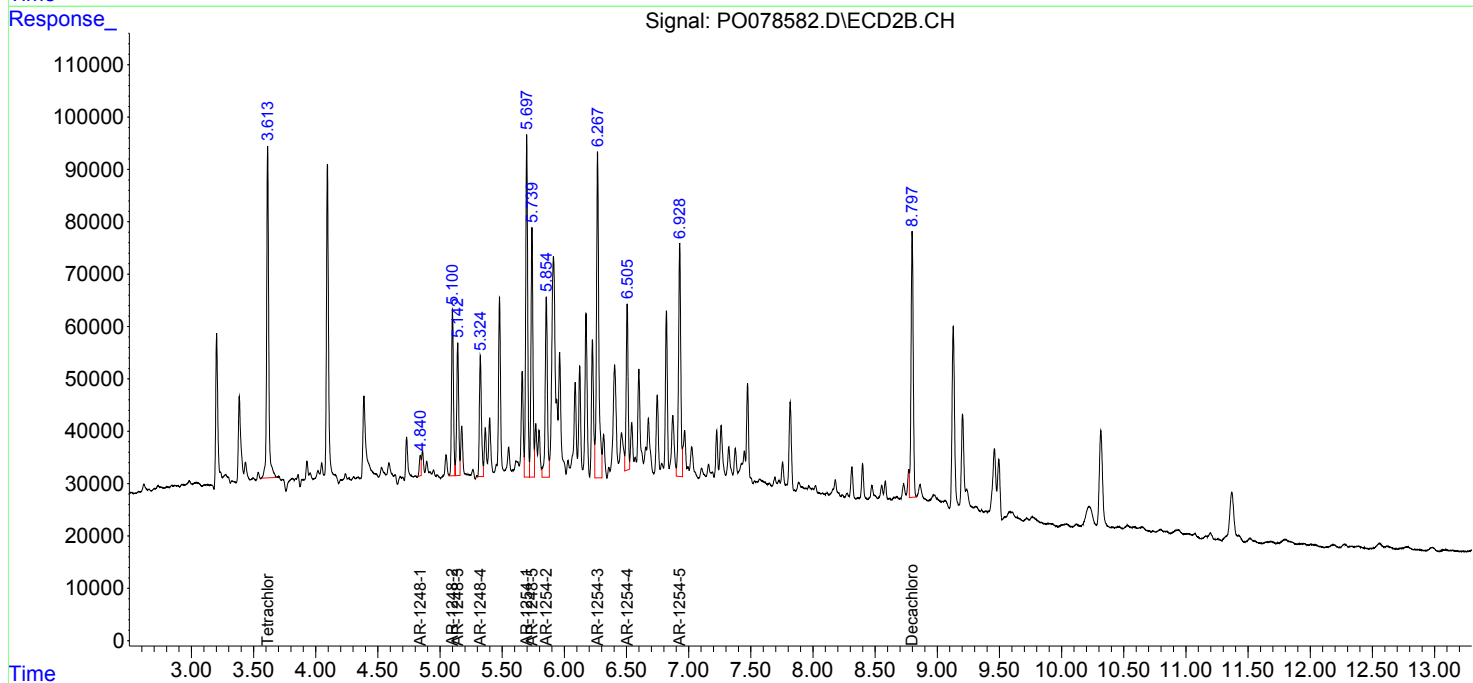
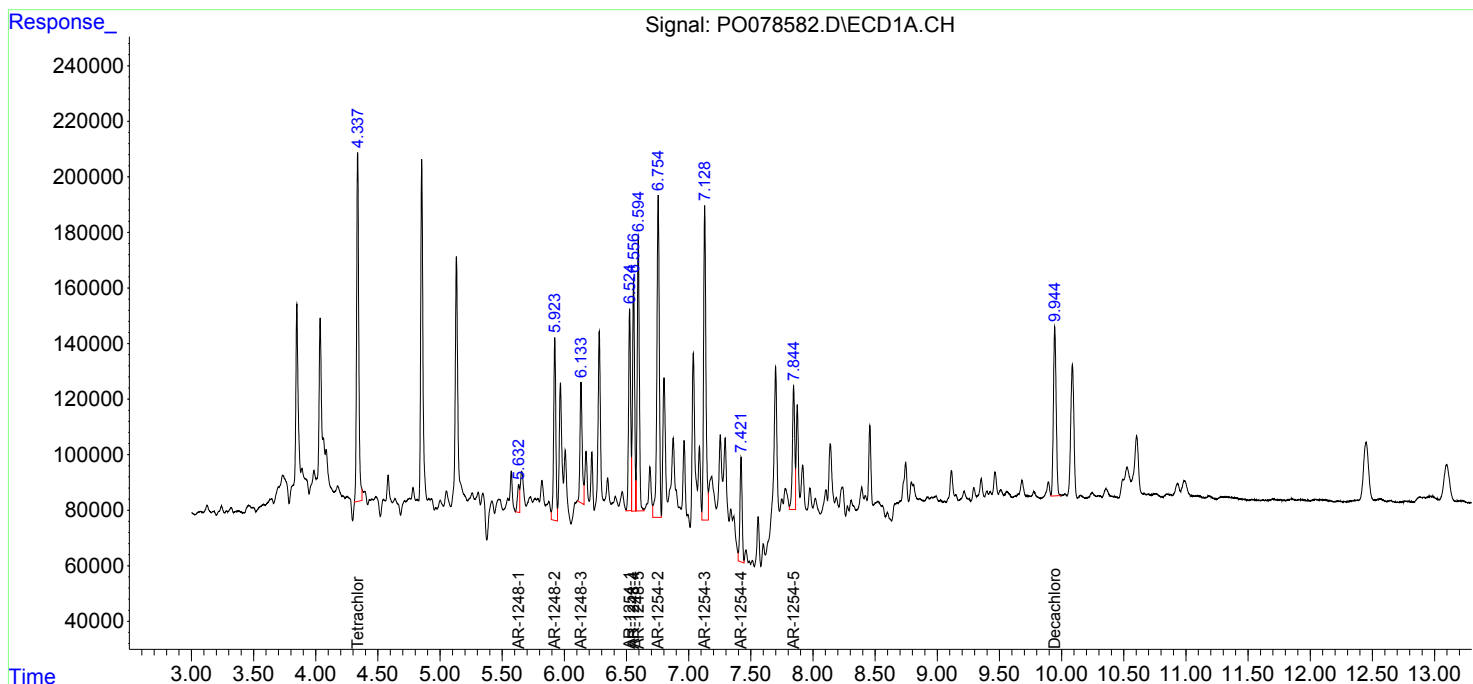
Data Path : Z:\pestpcbsrv\HPCHEM1\ECD_O\Data\P0060921\
 Data File : P0078582.D
 Signal(s) : Signal #1: ECD1A.CH Signal #2: ECD2B.CH
 Acq On : 09 Jun 2021 14:06
 Operator : DD\AJ
 Sample : M2644-03
 Misc :
 ALS Vial : 12 Sample Multiplier: 1

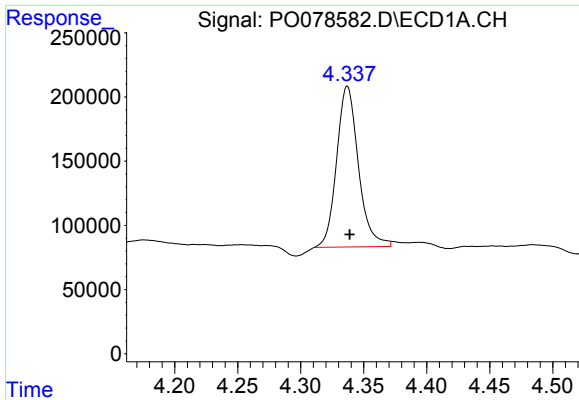
Instrument :
 ECD_O
 Client Sampled :
 1894-1900

Manual Integrations
APPROVED
 Ankita
 6/10/2021 3:18:16 PM

Integration File signal 1: autoint1.e
 Integration File signal 2: autoint2.e
 Quant Time: Jun 10 02:02:47 2021
 Quant Method : Z:\pestpcbsrv\HPCHEM1\ECD_O\methods\P0060721.M
 Quant Title : GC EXTRACTABLES
 QLast Update : Tue Jun 08 05:39:51 2021
 Response via : Initial Calibration
 Integrator: ChemStation 6890 Scale Mode: Small noise peaks clipped

Volume Inj. : 2 µl
 Signal #1 Phase : ZB-MR1 Signal #2 Phase: ZB-MR2
 Signal #1 Info : 30Mx0.32mmx 0.50µ Signal #2 Info : 30M x 0.32mm x 0.25µm

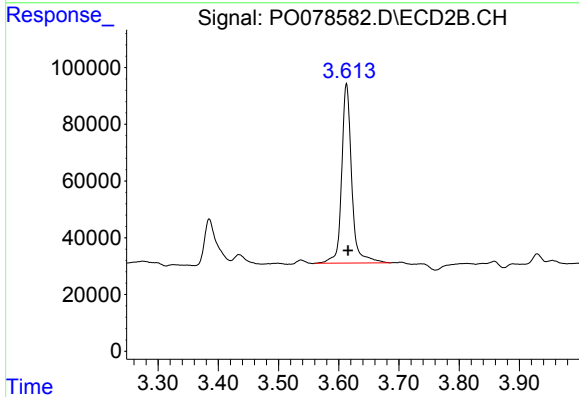




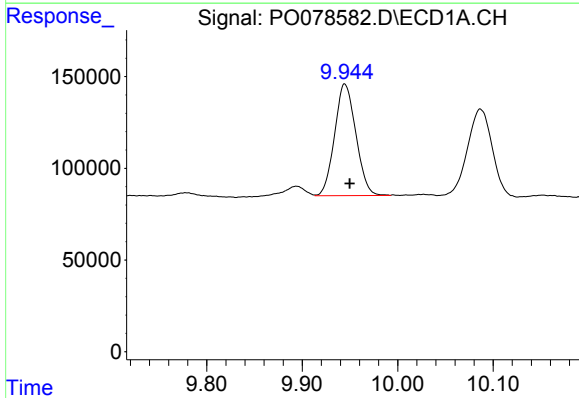
#1 Tetrachloro-m-xylene
 R.T.: 4.337 min
 Delta R.T.: -0.002 min
 Response: 1508216
 Conc: 19.75 ng/ml m

Instrument :
 ECD_O
 ClientSampled :
 1894-1900

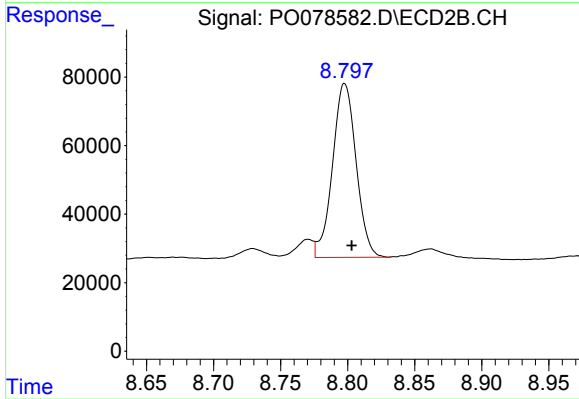
Manual Integrations
 APPROVED
 Ankita
 6/10/2021 3:18:16 PM



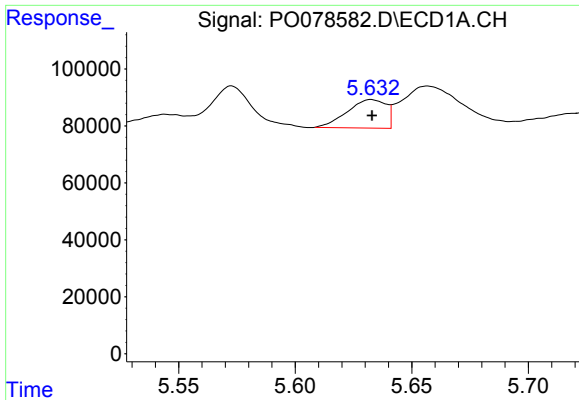
#1 Tetrachloro-m-xylene
 R.T.: 3.613 min
 Delta R.T.: -0.002 min
 Response: 730605
 Conc: 23.13 ng/ml



#2 Decachlorobiphenyl
 R.T.: 9.944 min
 Delta R.T.: -0.006 min
 Response: 941412
 Conc: 23.22 ng/ml m



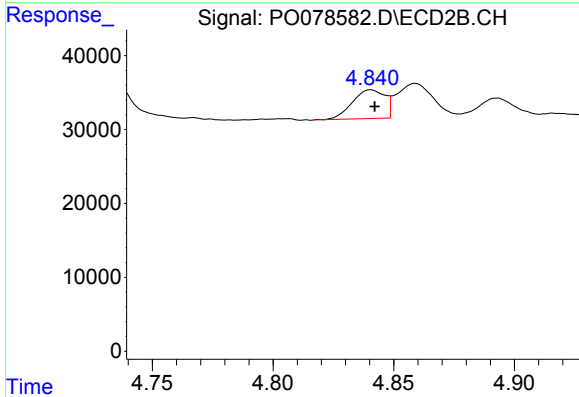
#2 Decachlorobiphenyl
 R.T.: 8.797 min
 Delta R.T.: -0.006 min
 Response: 619799
 Conc: 25.78 ng/ml m



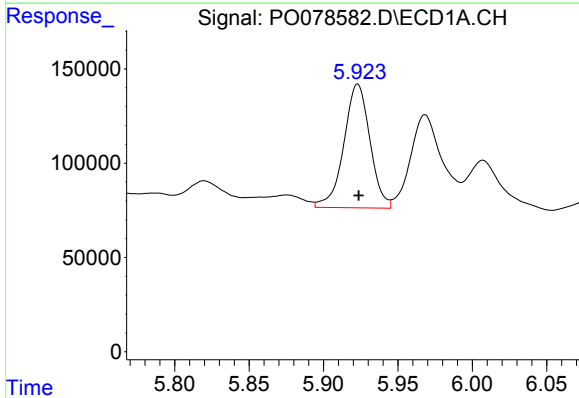
#21 AR-1248-1
 R.T.: 5.633 min
 Delta R.T.: 0.000 min
 Response: 115827
 Conc: 85.19 ng/ml

Instrument :
 ECD_O
ClientSampled :
 1894-1900

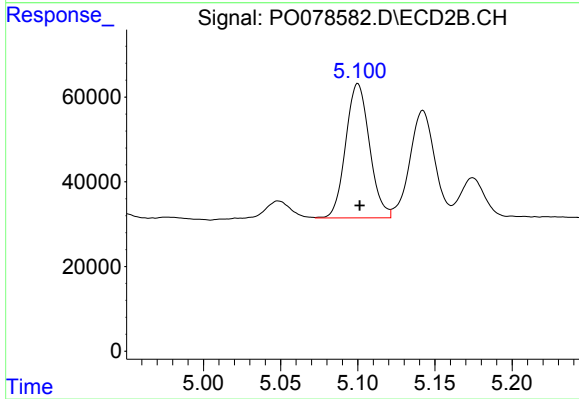
Manual Integrations
APPROVED
 Ankita
 6/10/2021 3:18:16 PM



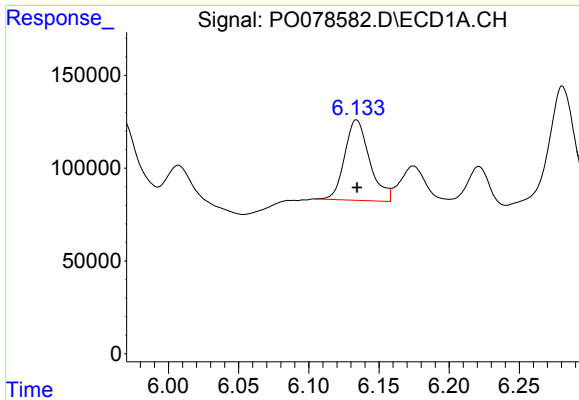
#21 AR-1248-1
 R.T.: 4.841 min
 Delta R.T.: -0.002 min
 Response: 36415
 Conc: 56.35 ng/ml



#22 AR-1248-2
 R.T.: 5.923 min
 Delta R.T.: 0.000 min
 Response: 801383
 Conc: 412.72 ng/ml



#22 AR-1248-2
 R.T.: 5.100 min
 Delta R.T.: -0.001 min
 Response: 340551
 Conc: 349.26 ng/ml

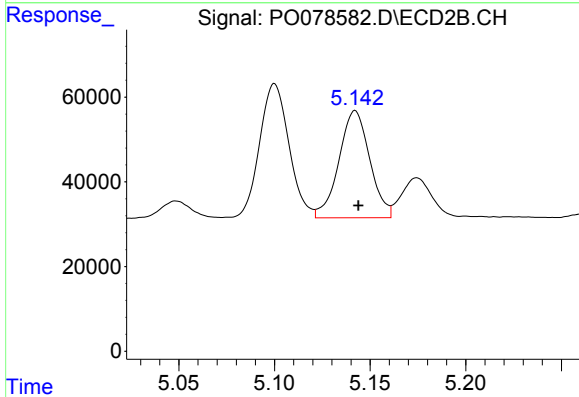


#23 AR-1248-3

R.T.: 6.134 min
 Delta R.T.: 0.000 min
 Response: 536480
 Conc: 237.38 ng/ml

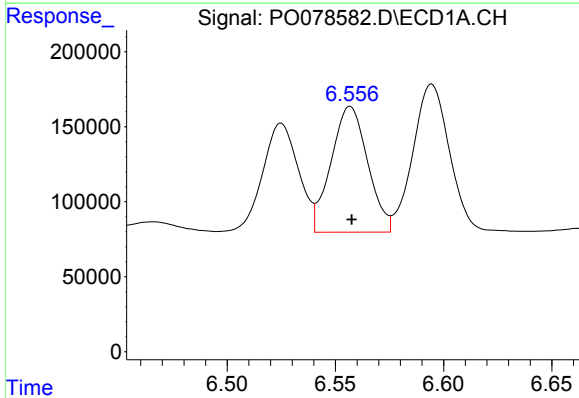
Instrument :
 ECD_O
 ClientSampled :
 1894-1900

Manual Integrations
APPROVED
 Ankita
 6/10/2021 3:18:16 PM



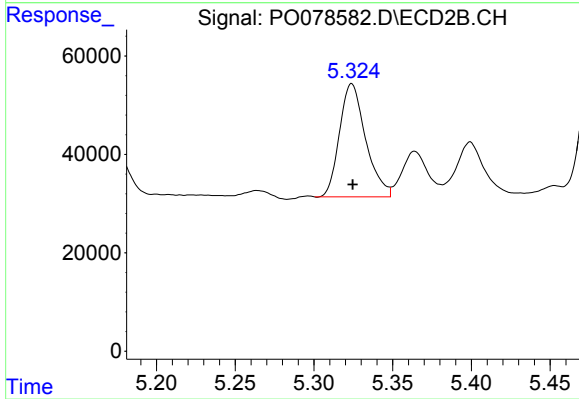
#23 AR-1248-3

R.T.: 5.142 min
 Delta R.T.: -0.002 min
 Response: 284370
 Conc: 293.10 ng/ml



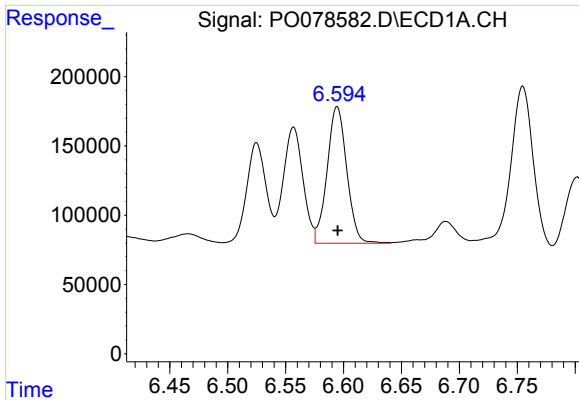
#24 AR-1248-4

R.T.: 6.556 min
 Delta R.T.: -0.001 min
 Response: 991186
 Conc: 418.37 ng/ml m



#24 AR-1248-4

R.T.: 5.324 min
 Delta R.T.: 0.000 min
 Response: 266425
 Conc: 230.00 ng/ml

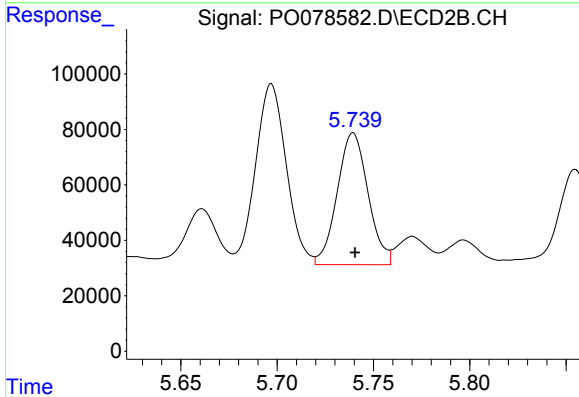


#25 AR-1248-5

R.T.: 6.594 min
 Delta R.T.: 0.000 min
 Response: 1167100
 Conc: 501.52 ng/ml m

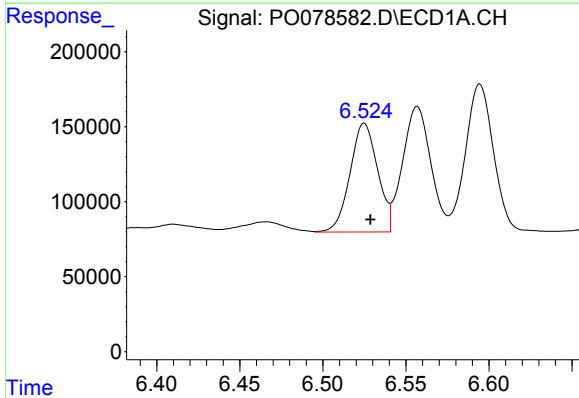
Instrument :
 ECD_O
ClientSampled :
 1894-1900

Manual Integrations
APPROVED
 Ankita
 6/10/2021 3:18:16 PM



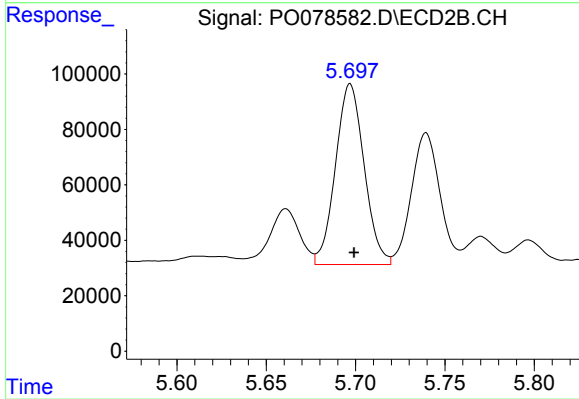
#25 AR-1248-5

R.T.: 5.739 min
 Delta R.T.: 0.000 min
 Response: 529950
 Conc: 483.36 ng/ml



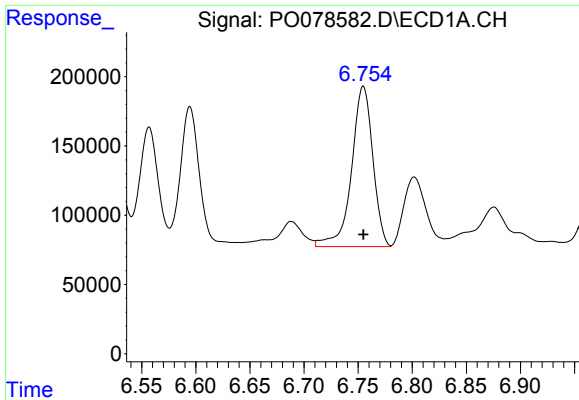
#26 AR-1254-1

R.T.: 6.524 min
 Delta R.T.: -0.004 min
 Response: 840848
 Conc: 332.26 ng/ml m



#26 AR-1254-1

R.T.: 5.697 min
 Delta R.T.: -0.002 min
 Response: 728504
 Conc: 422.09 ng/ml

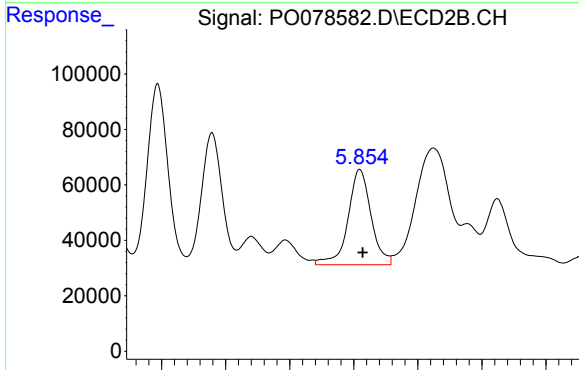


#27 AR-1254-2

R.T.: 6.754 min
 Delta R.T.: 0.000 min
 Response: 1583249
 Conc: 398.69 ng/ml m

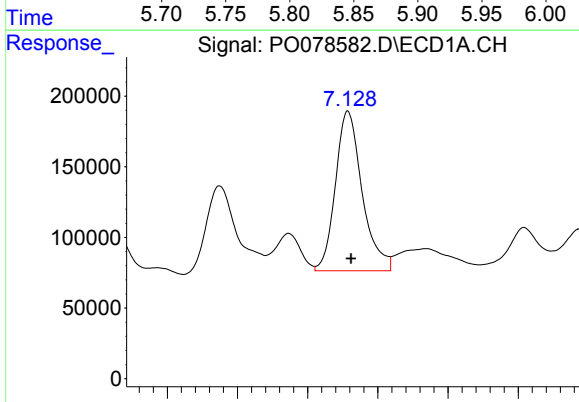
Instrument :
 ECD_O
ClientSampled :
 1894-1900

Manual Integrations
APPROVED
 Ankita
 6/10/2021 3:18:16 PM



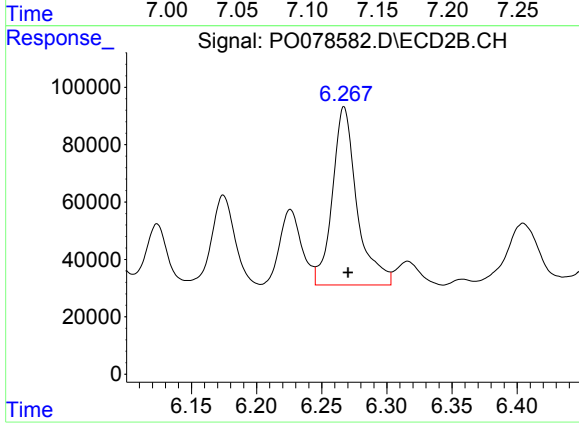
#27 AR-1254-2

R.T.: 5.855 min
 Delta R.T.: -0.002 min
 Response: 429781
 Conc: 268.03 ng/ml



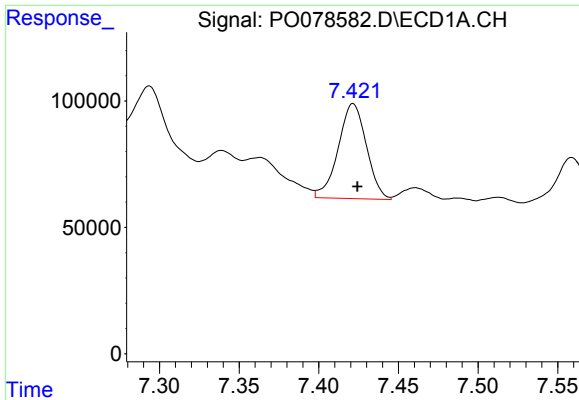
#28 AR-1254-3

R.T.: 7.128 min
 Delta R.T.: -0.003 min
 Response: 1494576
 Conc: 359.83 ng/ml m



#28 AR-1254-3

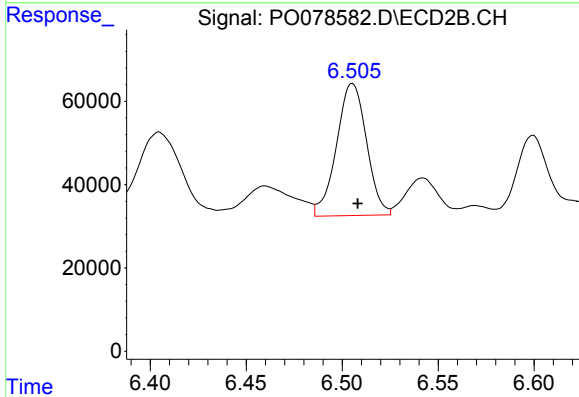
R.T.: 6.267 min
 Delta R.T.: -0.003 min
 Response: 816807
 Conc: 341.39 ng/ml



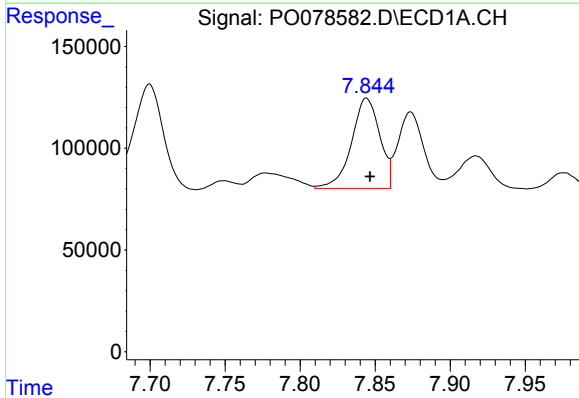
#29 AR-1254-4
 R.T.: 7.422 min
 Delta R.T.: -0.003 min
 Response: 463547
 Conc: 157.65 ng/ml

Instrument :
 ECD_O
ClientSampled :
 1894-1900

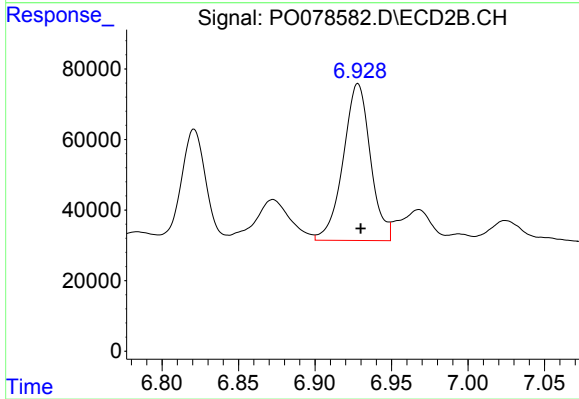
Manual Integrations
APPROVED
 Ankita
 6/10/2021 3:18:16 PM



#29 AR-1254-4
 R.T.: 6.505 min
 Delta R.T.: -0.003 min
 Response: 346005
 Conc: 236.44 ng/ml



#30 AR-1254-5
 R.T.: 7.844 min
 Delta R.T.: -0.003 min
 Response: 578483
 Conc: 180.41 ng/ml m



#30 AR-1254-5
 R.T.: 6.928 min
 Delta R.T.: -0.002 min
 Response: 552843
 Conc: 242.49 ng/ml