

Data Path : Z:\pestpcbsrv\HPCHEM1\ECD_0\Data\P0060921\
 Data File : P0078583.D
 Signal(s) : Signal #1: ECD1A.CH Signal #2: ECD2B.CH
 Acq On : 09 Jun 2021 14:24
 Operator : DD\AJ
 Sample : M2644-04
 Misc :
 ALS Vial : 13 Sample Multiplier: 1

Instrument :
 ECD_0
 ClientSampleId :
 329

Integration File signal 1: autoint1.e
 Integration File signal 2: autoint2.e
 Quant Time: Jun 10 02:03:20 2021
 Quant Method : Z:\pestpcbsrv\HPCHEM1\ECD_0\methods\P0060721.M
 Quant Title : GC EXTRACTABLES
 QLast Update : Tue Jun 08 05:39:51 2021
 Response via : Initial Calibration
 Integrator: ChemStation 6890 Scale Mode: Small noise peaks clipped

Volume Inj. : 2 µl
 Signal #1 Phase : ZB-MR1 Signal #2 Phase: ZB-MR2
 Signal #1 Info : 30Mx0.32mmx 0.50µ Signal #2 Info : 30M x 0.32mm x 0.25µm

Compound	RT#1	RT#2	Resp#1	Resp#2	ng/ml	ng/ml

System Monitoring Compounds						
1) SA Tetrachlo...	4.337	3.614	870806	416552	11.401	13.185
2) SA Decachlor...	9.946	8.799	562905	343405	13.883	14.281

Target Compounds

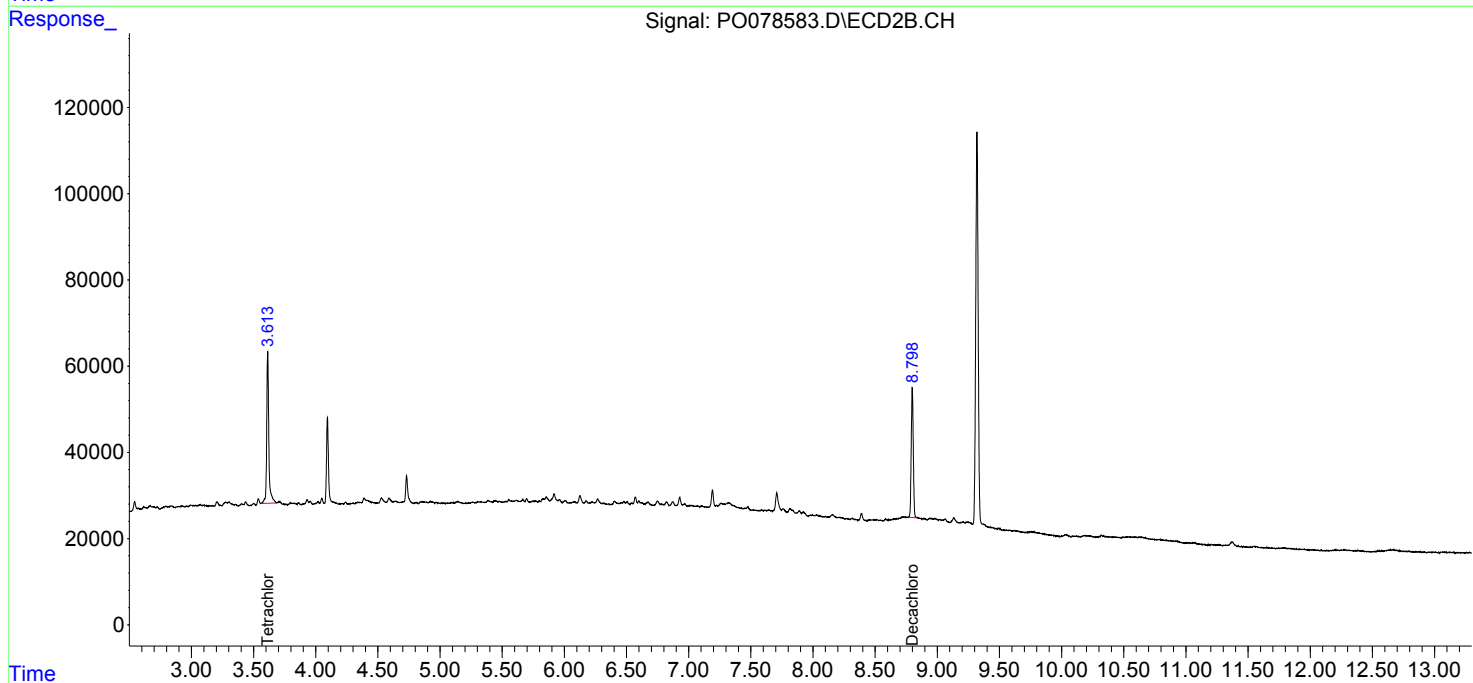
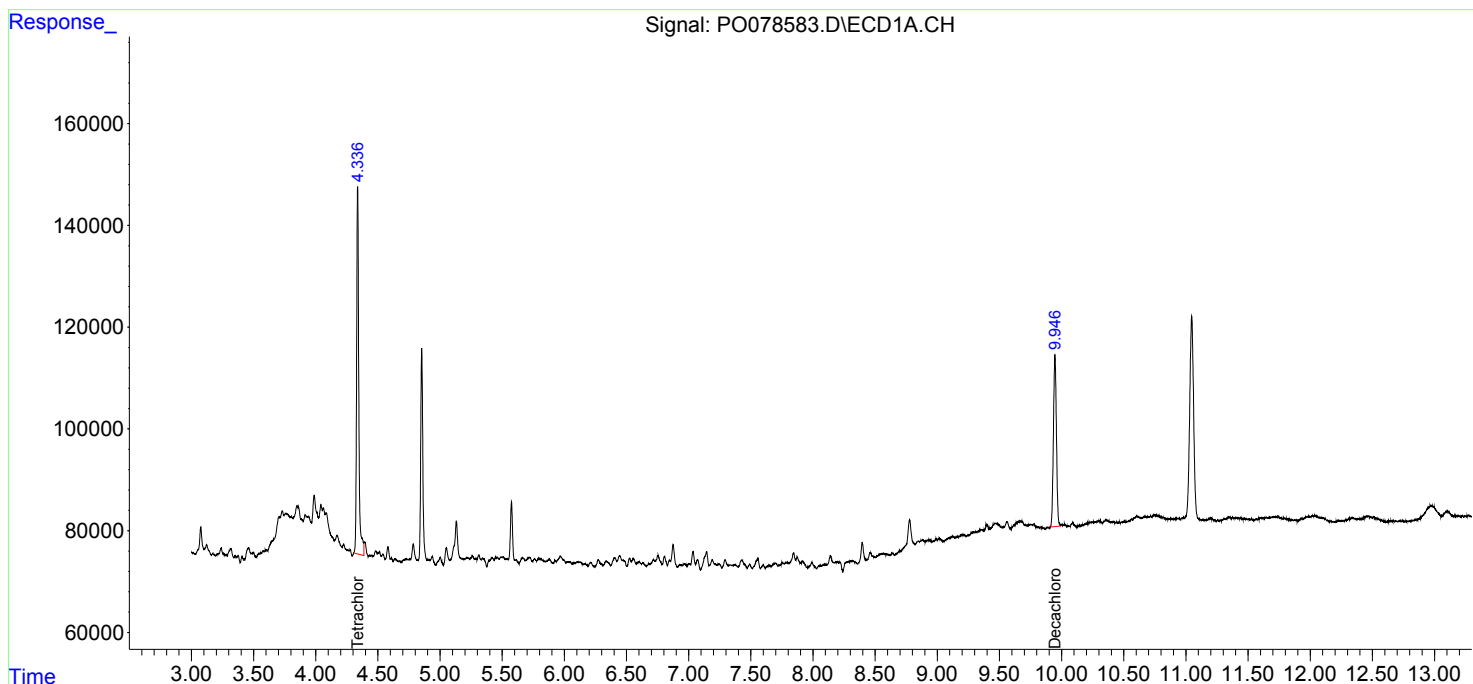
(f)=RT Delta > 1/2 Window (#)=Amounts differ by > 25% (m)=manual int.

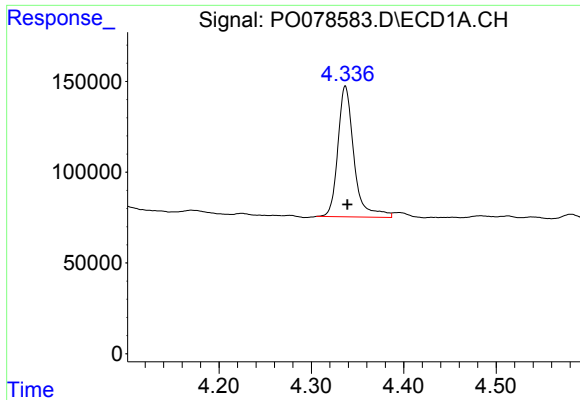
Data Path : Z:\pestpcbsrv\HPCHEM1\ECD_0\Data\P0060921\
 Data File : P0078583.D
 Signal(s) : Signal #1: ECD1A.CH Signal #2: ECD2B.CH
 Acq On : 09 Jun 2021 14:24
 Operator : DD\AJ
 Sample : M2644-04
 Misc :
 ALS Vial : 13 Sample Multiplier: 1

Instrument :
 ECD_O
 ClientSampled :
 329

Integration File signal 1: autoint1.e
 Integration File signal 2: autoint2.e
 Quant Time: Jun 10 02:03:20 2021
 Quant Method : Z:\pestpcbsrv\HPCHEM1\ECD_0\methods\P0060721.M
 Quant Title : GC EXTRACTABLES
 QLast Update : Tue Jun 08 05:39:51 2021
 Response via : Initial Calibration
 Integrator: ChemStation 6890 Scale Mode: Small noise peaks clipped

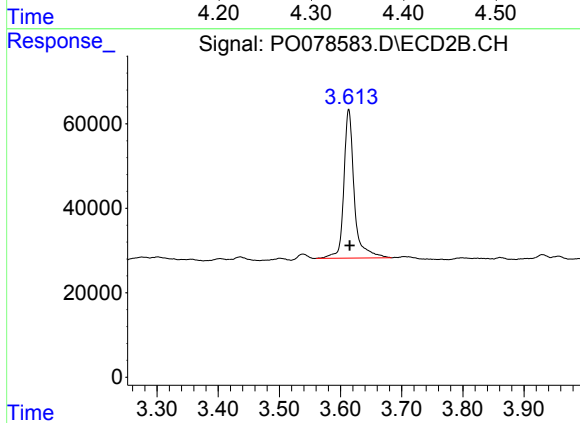
Volume Inj. : 2 µl
 Signal #1 Phase : ZB-MR1 Signal #2 Phase: ZB-MR2
 Signal #1 Info : 30Mx0.32mmx 0.50µm Signal #2 Info : 30M x 0.32mm x 0.25µm



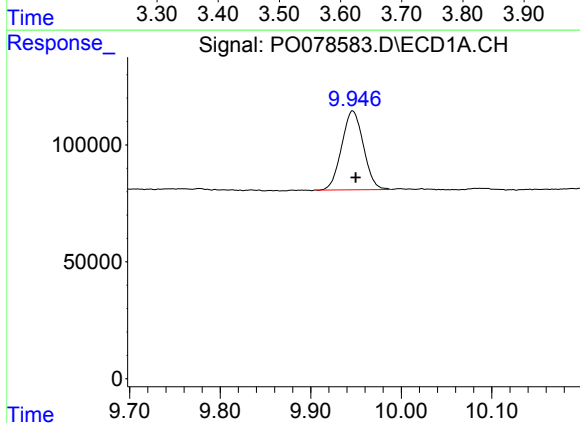


#1 Tetrachloro-m-xylene
 R.T.: 4.337 min
 Delta R.T.: -0.002 min
 Response: 870806
 Conc: 11.40 ng/ml

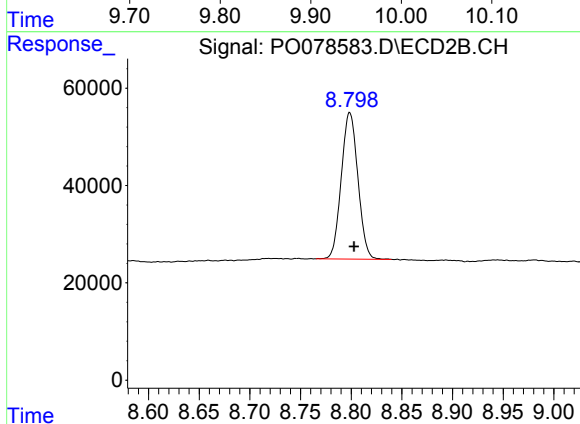
Instrument :
 ECD_O
 ClientSampled :
 329



#1 Tetrachloro-m-xylene
 R.T.: 3.614 min
 Delta R.T.: -0.002 min
 Response: 416552
 Conc: 13.19 ng/ml



#2 Decachlorobiphenyl
 R.T.: 9.946 min
 Delta R.T.: -0.004 min
 Response: 562905
 Conc: 13.88 ng/ml



#2 Decachlorobiphenyl
 R.T.: 8.799 min
 Delta R.T.: -0.004 min
 Response: 343405
 Conc: 14.28 ng/ml