

Data Path : Z:\pestpcbsrv\HPCHEM1\ECD_0\Data\P0060921\
 Data File : P0078592.D
 Signal(s) : Signal #1: ECD1A.CH Signal #2: ECD2B.CH
 Acq On : 09 Jun 2021 16:59
 Operator : DD\AJ
 Sample : M2648-01
 Misc :
 ALS Vial : 18 Sample Multiplier: 1

Instrument :
 ECD_0
 ClientSampleId :
 CRUSH-R

Integration File signal 1: autoint1.e
 Integration File signal 2: autoint2.e
 Quant Time: Jun 10 02:07:12 2021
 Quant Method : Z:\pestpcbsrv\HPCHEM1\ECD_0\methods\P0060721.M
 Quant Title : GC EXTRACTABLES
 QLast Update : Tue Jun 08 05:39:51 2021
 Response via : Initial Calibration
 Integrator: ChemStation 6890 Scale Mode: Small noise peaks clipped

Volume Inj. : 2 µl
 Signal #1 Phase : ZB-MR1 Signal #2 Phase: ZB-MR2
 Signal #1 Info : 30Mx0.32mmx 0.50µ Signal #2 Info : 30M x 0.32mm x 0.25µm

Compound	RT#1	RT#2	Resp#1	Resp#2	ng/ml	ng/ml

System Monitoring Compounds						
1) SA Tetrachlo...	4.338	3.614	1821745	813654	23.851	25.754
2) SA Decachlor...	9.945	8.798	1163109	714526	28.685	29.716

Target Compounds

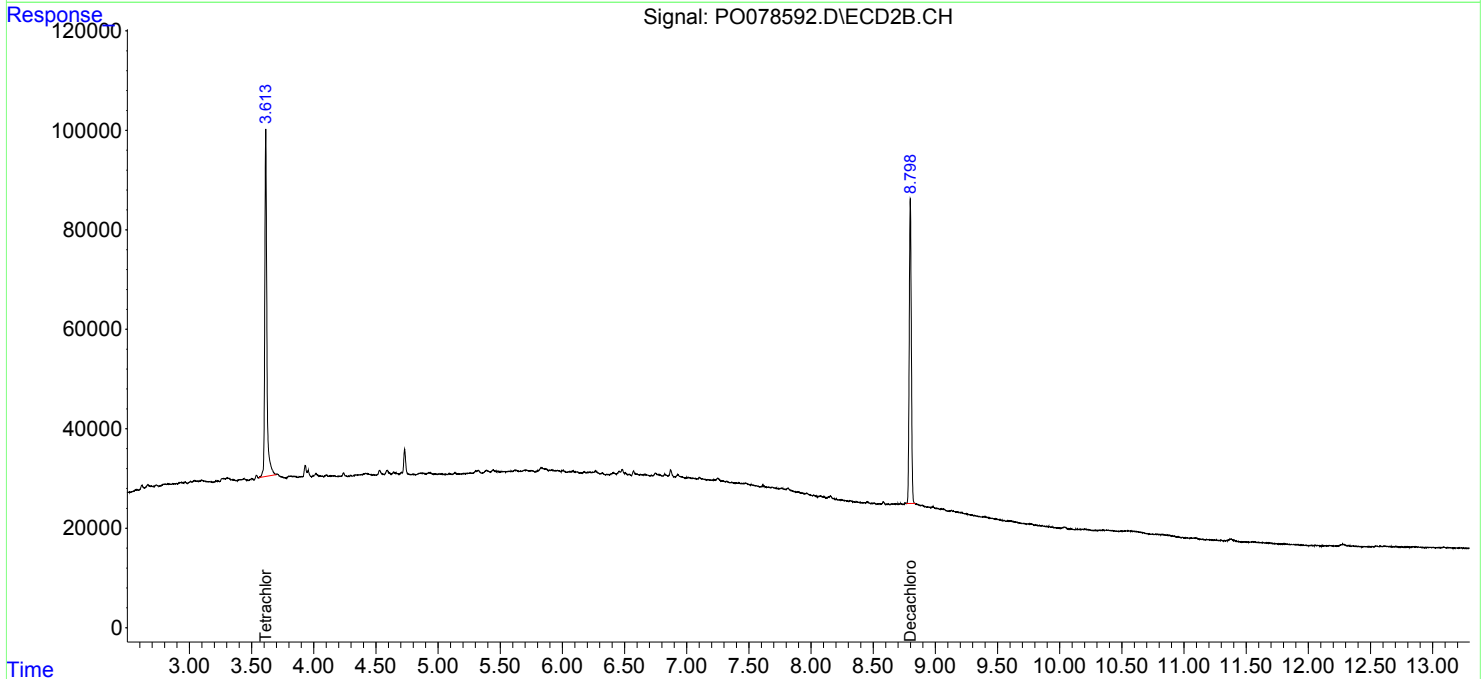
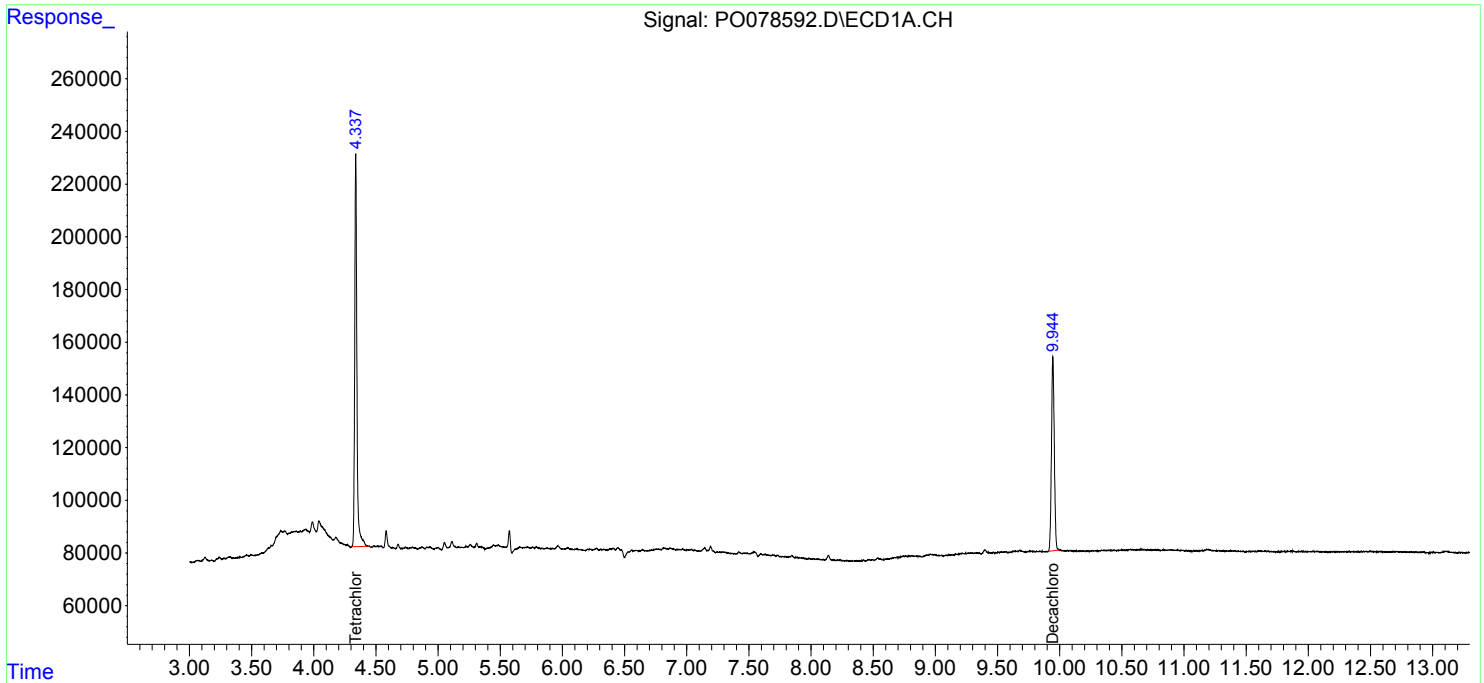
(f)=RT Delta > 1/2 Window (#)=Amounts differ by > 25% (m)=manual int.

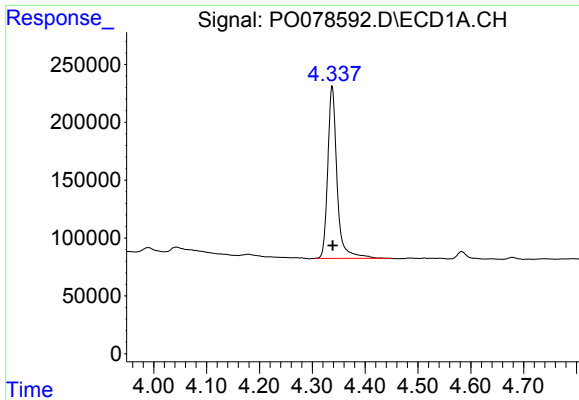
Data Path : Z:\pestpcbsrv\HPCHEM1\ECD_0\Data\P0060921\
 Data File : P0078592.D
 Signal(s) : Signal #1: ECD1A.CH Signal #2: ECD2B.CH
 Acq On : 09 Jun 2021 16:59
 Operator : DD\AJ
 Sample : M2648-01
 Misc :
 ALS Vial : 18 Sample Multiplier: 1

Instrument :
 ECD_O
 ClientSampleId :
 CRUSH-R

Integration File signal 1: autoint1.e
 Integration File signal 2: autoint2.e
 Quant Time: Jun 10 02:07:12 2021
 Quant Method : Z:\pestpcbsrv\HPCHEM1\ECD_0\methods\P0060721.M
 Quant Title : GC EXTRACTABLES
 QLast Update : Tue Jun 08 05:39:51 2021
 Response via : Initial Calibration
 Integrator: ChemStation 6890 Scale Mode: Small noise peaks clipped

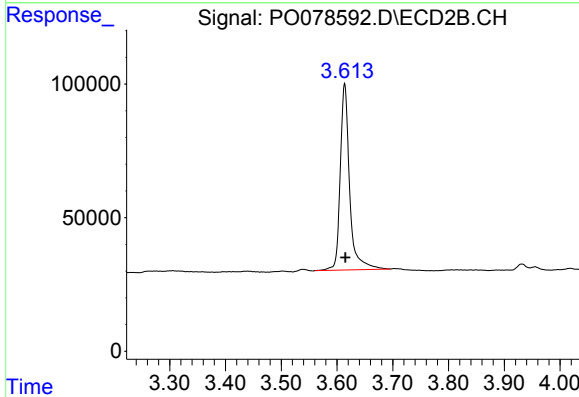
Volume Inj. : 2 µl
 Signal #1 Phase : ZB-MR1 Signal #2 Phase: ZB-MR2
 Signal #1 Info : 30Mx0.32mmx 0.50µ Signal #2 Info : 30M x 0.32mm x 0.25µm



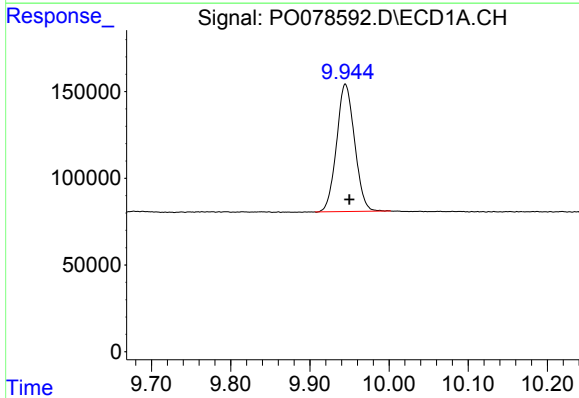


#1 Tetrachloro-m-xylene
 R.T.: 4.338 min
 Delta R.T.: -0.001 min
 Response: 1821745
 Conc: 23.85 ng/ml

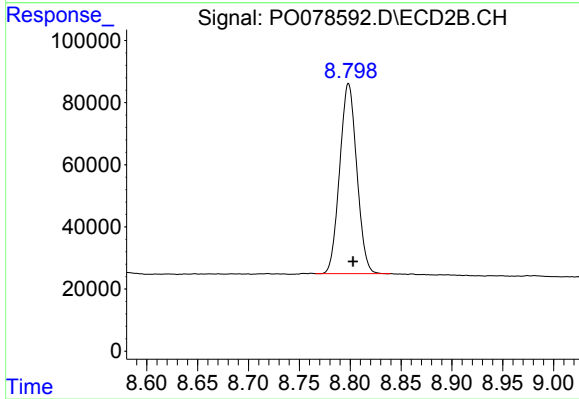
Instrument :
 ECD_O
 ClientSampleId :
 CRUSH-R



#1 Tetrachloro-m-xylene
 R.T.: 3.614 min
 Delta R.T.: -0.001 min
 Response: 813654
 Conc: 25.75 ng/ml



#2 Decachlorobiphenyl
 R.T.: 9.945 min
 Delta R.T.: -0.005 min
 Response: 1163109
 Conc: 28.68 ng/ml



#2 Decachlorobiphenyl
 R.T.: 8.798 min
 Delta R.T.: -0.004 min
 Response: 714526
 Conc: 29.72 ng/ml