

Data Path : Z:\pestpcbsrv\HPCHEM1\ECD_0\Data\P0060921\
 Data File : P0078595.D
 Signal(s) : Signal #1: ECD1A.CH Signal #2: ECD2B.CH
 Acq On : 09 Jun 2021 17:51
 Operator : DD\AJ
 Sample : AR1660CCC500
 Misc :
 ALS Vial : 3 Sample Multiplier: 1

Instrument :
 ECD_0
 ClientSampleId :
 AR1660CCC500

Integration File signal 1: autoint1.e
 Integration File signal 2: autoint2.e
 Quant Time: Jun 10 02:08:42 2021
 Quant Method : Z:\pestpcbsrv\HPCHEM1\ECD_0\methods\P0060721.M
 Quant Title : GC EXTRACTABLES
 QLast Update : Tue Jun 08 05:39:51 2021
 Response via : Initial Calibration
 Integrator: ChemStation 6890 Scale Mode: Small noise peaks clipped

Volume Inj. : 2 µl
 Signal #1 Phase : ZB-MR2 Signal #2 Phase: ZB-MR2
 Signal #1 Info : 30Mx0.32mmx 0.50µ Signal #2 Info : 30M x 0.32mm x 0.25µm

Compound	RT#1	RT#2	Resp#1	Resp#2	ng/ml	ng/ml

System Monitoring Compounds						
1) SA Tetrachlo...	4.339	3.615	3876294	1640360	50.750	51.922
2) SA Decachlor...	9.947	8.800	2403925	1439825	59.286	59.879
Target Compounds						
3) L1 AR-1016-1	5.634	4.842	1207081	552438	515.507	528.094
4) L1 AR-1016-2	5.656	4.861	1791841	814237	497.007	515.765
5) L1 AR-1016-3	5.720	5.049	1137997	425378	520.356	531.209
6) L1 AR-1016-4	5.825	5.102	915210	370192	521.641	524.201
7) L1 AR-1016-5	6.136	5.325	874362	446126	504.005	511.488
31) L7 AR-1260-1	7.296	6.404	1486169	814824	506.874	513.549
32) L7 AR-1260-2	7.560	6.600	1748654	993262	531.569	533.290
33) L7 AR-1260-3	7.920	6.751	1281811	908848	541.303	512.209
34) L7 AR-1260-4	8.146	7.228	1452214	783841	564.631	534.912
35) L7 AR-1260-5	8.459	7.476	2679750	1781187	526.964	510.476

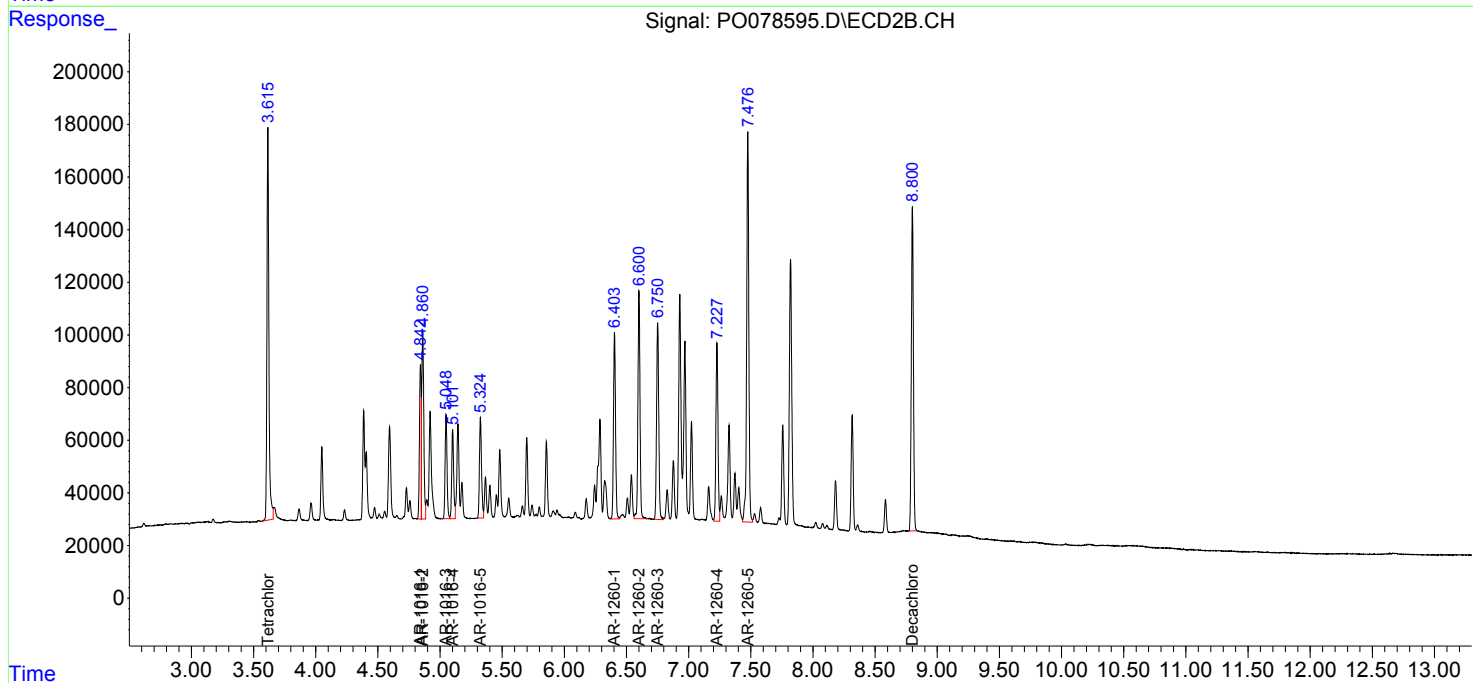
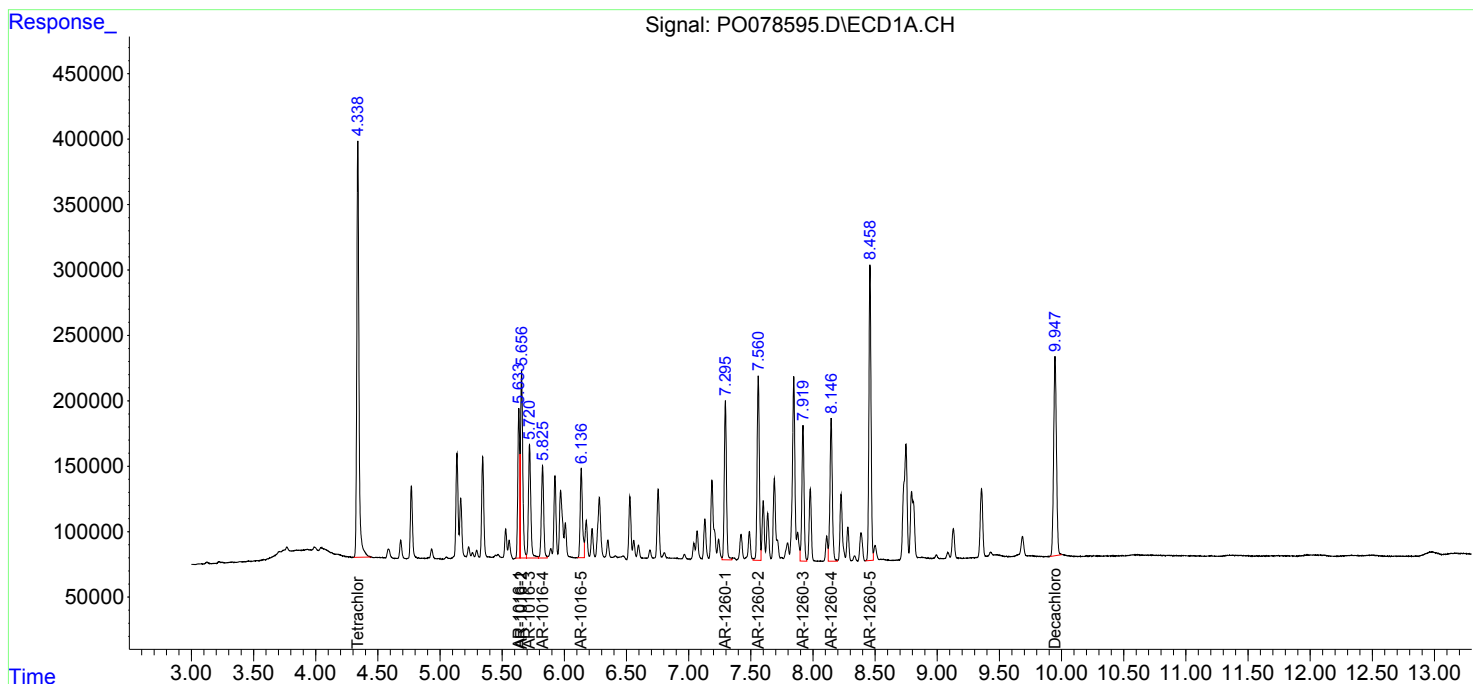
(f)=RT Delta > 1/2 Window (#)=Amounts differ by > 25% (m)=manual int.

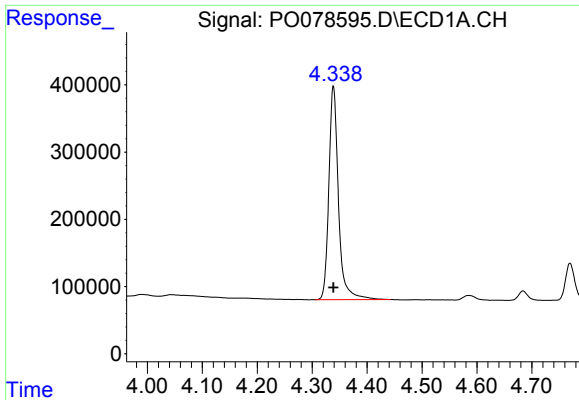
Data Path : Z:\pestpcbsrv\HPCHEM1\ECD_0\Data\P0060921\
 Data File : P0078595.D
 Signal(s) : Signal #1: ECD1A.CH Signal #2: ECD2B.CH
 Acq On : 09 Jun 2021 17:51
 Operator : DD\AJ
 Sample : AR1660CCC500
 Misc :
 ALS Vial : 3 Sample Multiplier: 1

Instrument :
 ECD_O
 Client Sampled :
 AR1660CCC500

Integration File signal 1: autoint1.e
 Integration File signal 2: autoint2.e
 Quant Time: Jun 10 02:08:42 2021
 Quant Method : Z:\pestpcbsrv\HPCHEM1\ECD_0\methods\P0060721.M
 Quant Title : GC EXTRACTABLES
 QLast Update : Tue Jun 08 05:39:51 2021
 Response via : Initial Calibration
 Integrator: ChemStation 6890 Scale Mode: Small noise peaks clipped

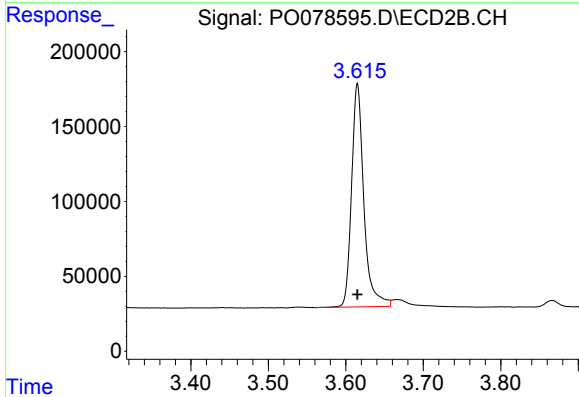
Volume Inj. : 2 µl
 Signal #1 Phase : ZB-MR1 Signal #2 Phase: ZB-MR2
 Signal #1 Info : 30Mx0.32mmx 0.50µ Signal #2 Info : 30M x 0.32mm x 0.25µm



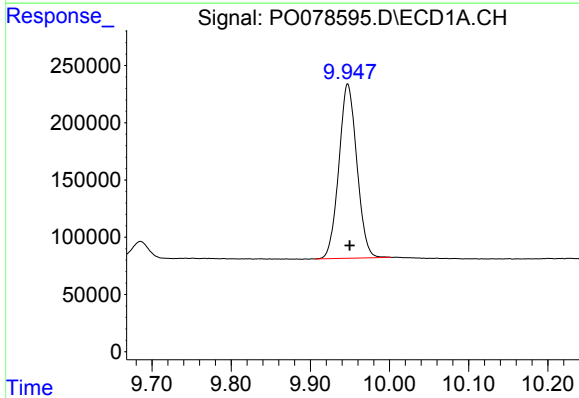


#1 Tetrachloro-m-xylene
 R.T.: 4.339 min
 Delta R.T.: 0.000 min
 Response: 3876294
 Conc: 50.75 ng/ml

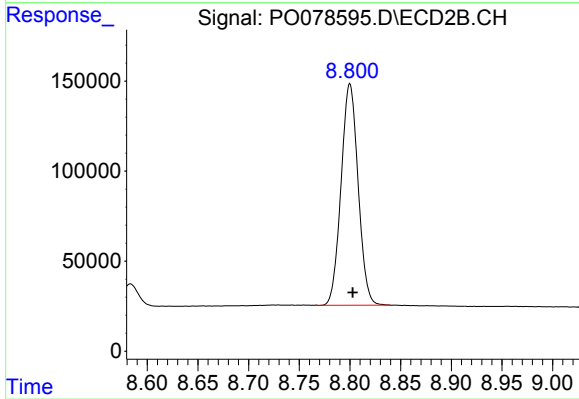
Instrument :
 ECD_O
 ClientSampleId :
 AR1660CCC500



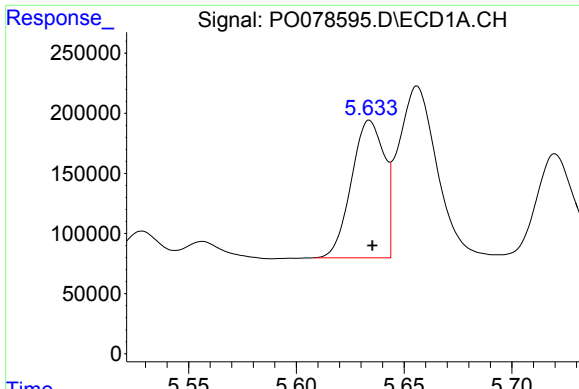
#1 Tetrachloro-m-xylene
 R.T.: 3.615 min
 Delta R.T.: 0.000 min
 Response: 1640360
 Conc: 51.92 ng/ml



#2 Decachlorobiphenyl
 R.T.: 9.947 min
 Delta R.T.: -0.003 min
 Response: 2403925
 Conc: 59.29 ng/ml

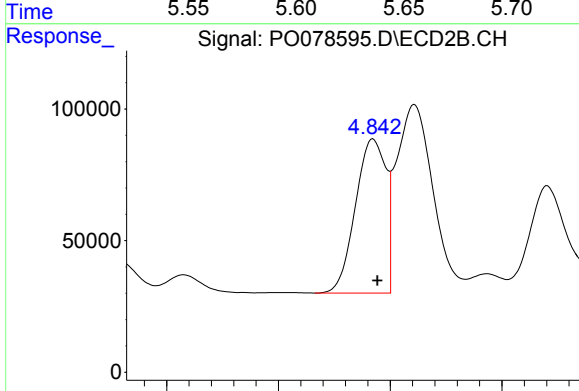


#2 Decachlorobiphenyl
 R.T.: 8.800 min
 Delta R.T.: -0.003 min
 Response: 1439825
 Conc: 59.88 ng/ml

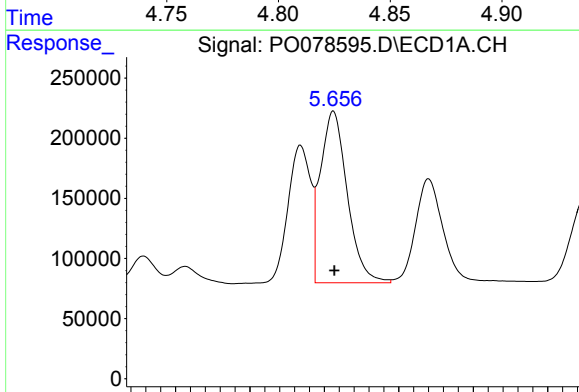


#3 AR-1016-1
 R.T.: 5.634 min
 Delta R.T.: -0.001 min
 Response: 1207081
 Conc: 515.51 ng/ml

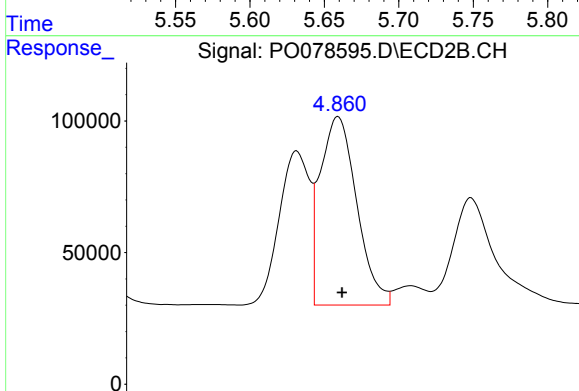
Instrument :
 ECD_O
 ClientSampleId :
 AR1660CCC500



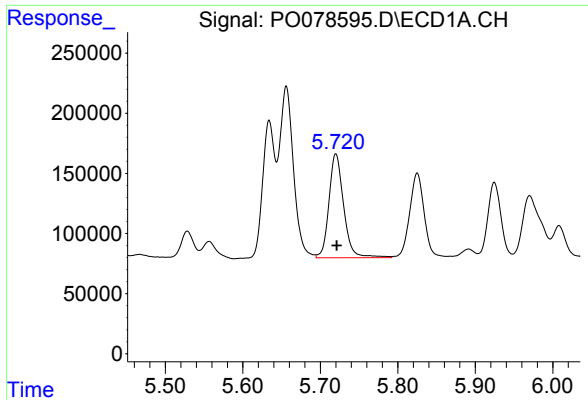
#3 AR-1016-1
 R.T.: 4.842 min
 Delta R.T.: -0.002 min
 Response: 552438
 Conc: 528.09 ng/ml



#4 AR-1016-2
 R.T.: 5.656 min
 Delta R.T.: 0.000 min
 Response: 1791841
 Conc: 497.01 ng/ml

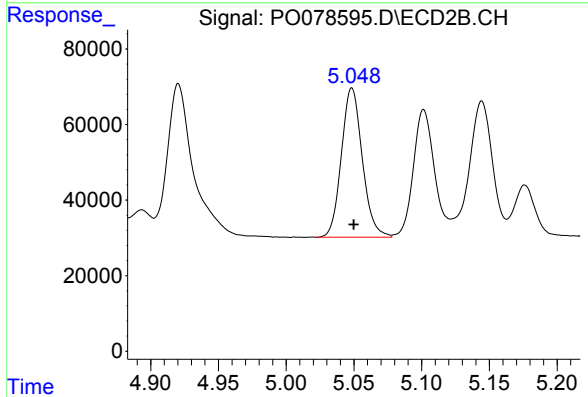


#4 AR-1016-2
 R.T.: 4.861 min
 Delta R.T.: -0.002 min
 Response: 814237
 Conc: 515.76 ng/ml

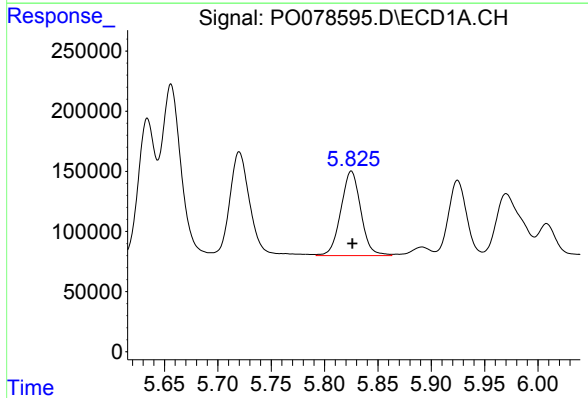


#5 AR-1016-3
 R.T.: 5.720 min
 Delta R.T.: 0.000 min
 Response: 1137997
 Conc: 520.36 ng/ml

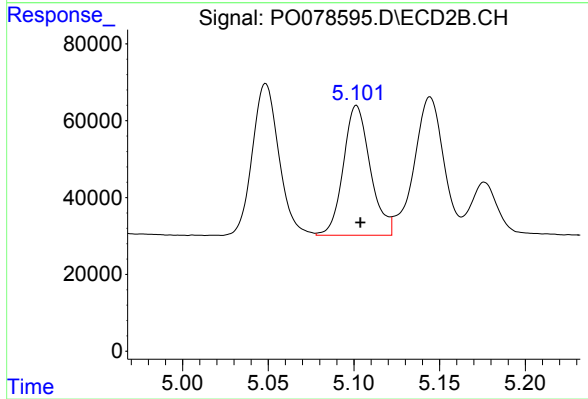
Instrument :
 ECD_O
 ClientSampleId :
 AR1660CCC500



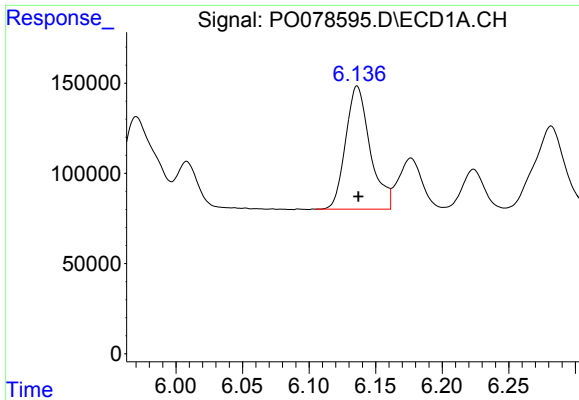
#5 AR-1016-3
 R.T.: 5.049 min
 Delta R.T.: -0.001 min
 Response: 425378
 Conc: 531.21 ng/ml



#6 AR-1016-4
 R.T.: 5.825 min
 Delta R.T.: 0.000 min
 Response: 915210
 Conc: 521.64 ng/ml

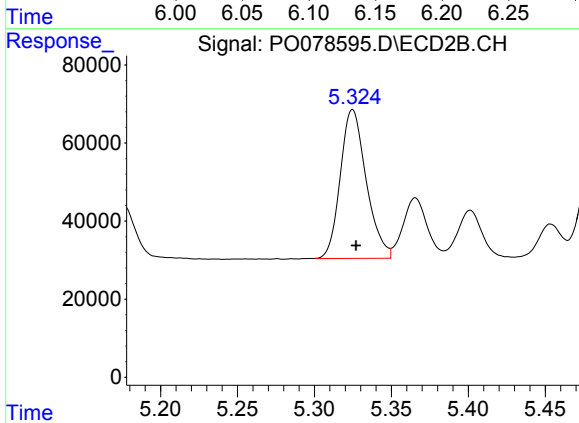


#6 AR-1016-4
 R.T.: 5.102 min
 Delta R.T.: -0.002 min
 Response: 370192
 Conc: 524.20 ng/ml

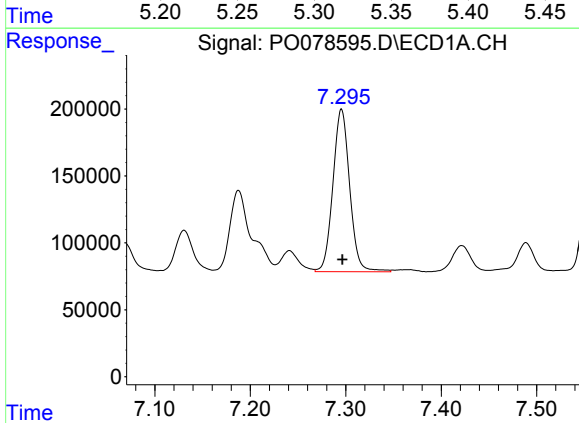


#7 AR-1016-5
 R.T.: 6.136 min
 Delta R.T.: 0.000 min
 Response: 874362
 Conc: 504.00 ng/ml

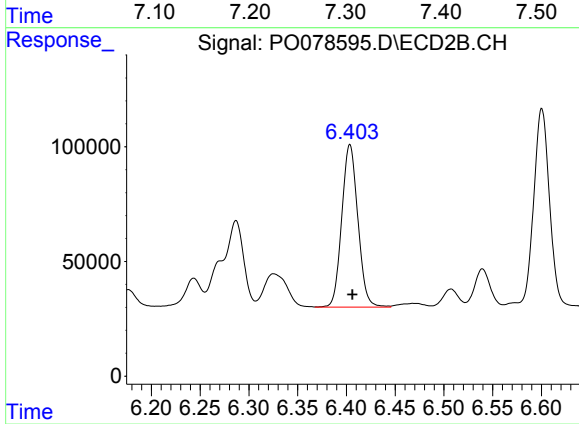
Instrument :
 ECD_O
 ClientSampleId :
 AR1660CCC500



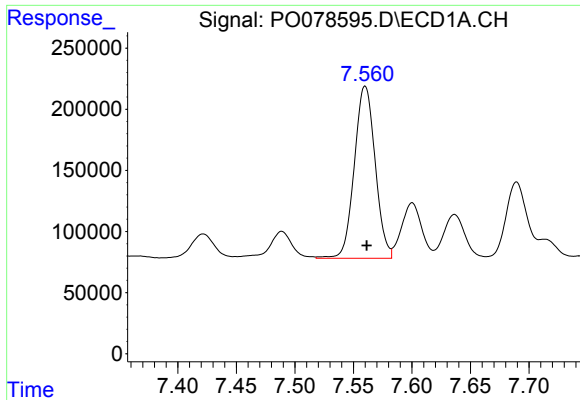
#7 AR-1016-5
 R.T.: 5.325 min
 Delta R.T.: -0.002 min
 Response: 446126
 Conc: 511.49 ng/ml



#31 AR-1260-1
 R.T.: 7.296 min
 Delta R.T.: 0.000 min
 Response: 1486169
 Conc: 506.87 ng/ml



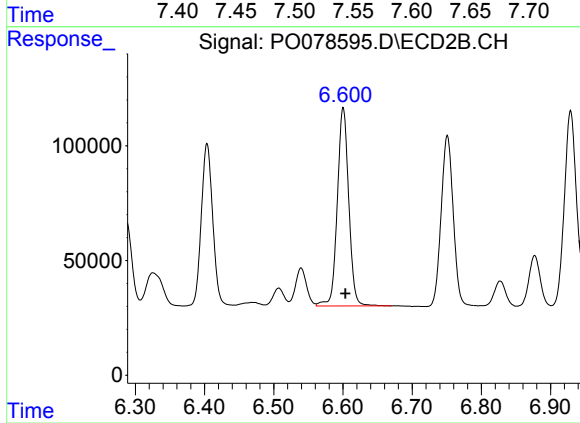
#31 AR-1260-1
 R.T.: 6.404 min
 Delta R.T.: -0.003 min
 Response: 814824
 Conc: 513.55 ng/ml



#32 AR-1260-2

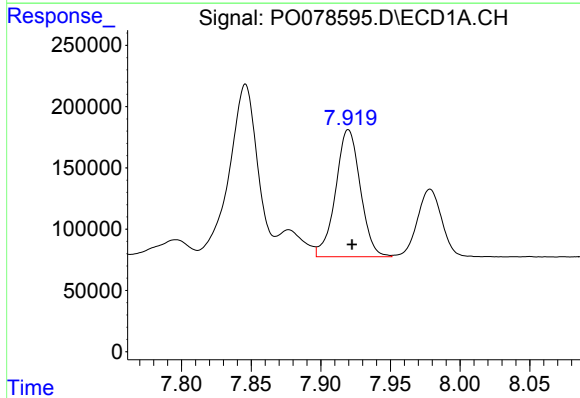
R.T.: 7.560 min
Delta R.T.: -0.001 min
Response: 1748654
Conc: 531.57 ng/ml

Instrument :
ECD_O
ClientSampleId :
AR1660CCC500



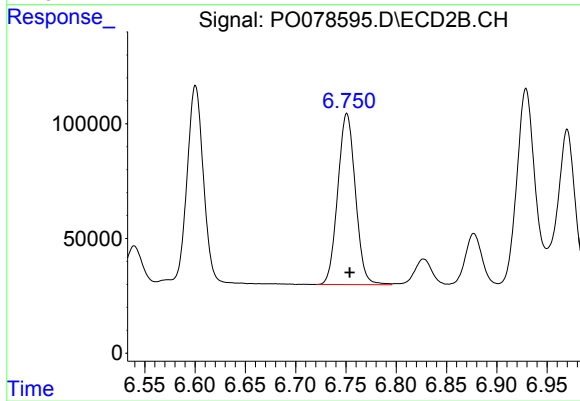
#32 AR-1260-2

R.T.: 6.600 min
Delta R.T.: -0.003 min
Response: 993262
Conc: 533.29 ng/ml



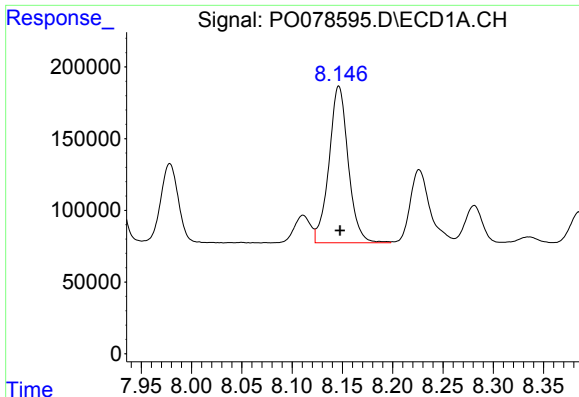
#33 AR-1260-3

R.T.: 7.920 min
Delta R.T.: -0.003 min
Response: 1281811
Conc: 541.30 ng/ml



#33 AR-1260-3

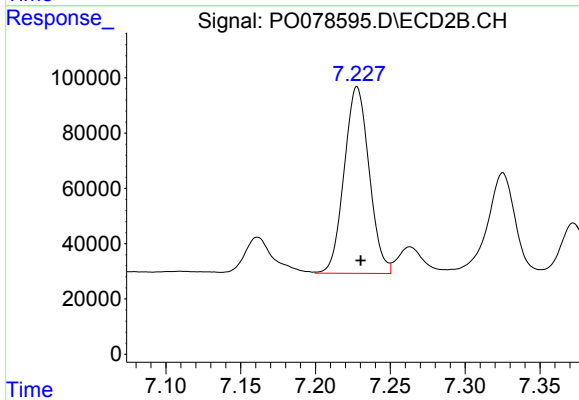
R.T.: 6.751 min
Delta R.T.: -0.003 min
Response: 908848
Conc: 512.21 ng/ml



#34 AR-1260-4

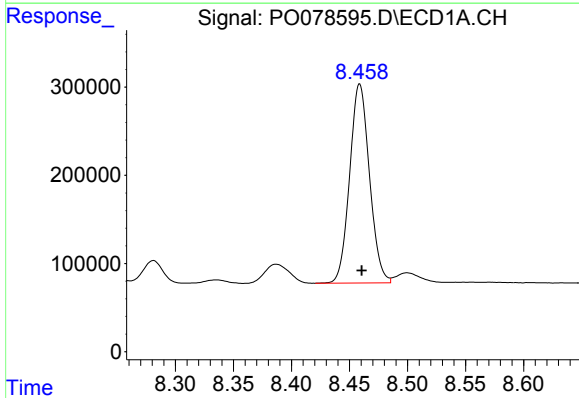
R.T.: 8.146 min
 Delta R.T.: -0.001 min
 Response: 1452214
 Conc: 564.63 ng/ml

Instrument :
 ECD_O
 ClientSampleId :
 AR1660CCC500



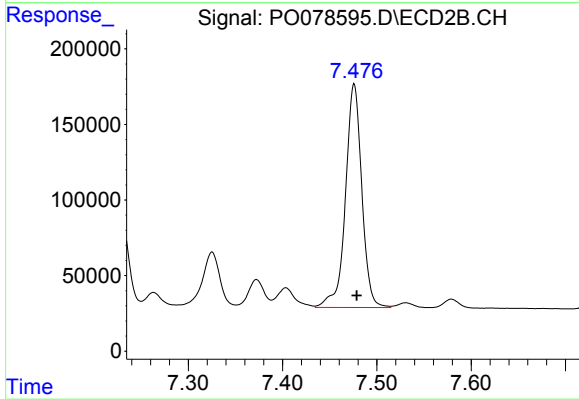
#34 AR-1260-4

R.T.: 7.228 min
 Delta R.T.: -0.003 min
 Response: 783841
 Conc: 534.91 ng/ml



#35 AR-1260-5

R.T.: 8.459 min
 Delta R.T.: -0.002 min
 Response: 2679750
 Conc: 526.96 ng/ml



#35 AR-1260-5

R.T.: 7.476 min
 Delta R.T.: -0.003 min
 Response: 1781187
 Conc: 510.48 ng/ml