

Data Path : Z:\pestpcbsrv\HPCHEM1\ECD\_0\Data\P0060925\  
 Data File : PO111544.D  
 Signal(s) : Signal #1: ECD1A.ch Signal #2: ECD2B.ch  
 Acq On : 09 Jun 2025 10:51  
 Operator : YP/AJ  
 Sample : AR1254CCC500  
 Misc :  
 ALS Vial : 6 Sample Multiplier: 1

Instrument :  
 ECD\_0  
 ClientSampleId :  
 AR1254CCC500

Integration File signal 1: autoint1.e  
 Integration File signal 2: autoint2.e  
 Quant Time: Jun 10 01:50:24 2025  
 Quant Method : Z:\pestpcbsrv\HPCHEM1\ECD\_0\methods\P0051525.M  
 Quant Title : GC EXTRACTABLES  
 QLast Update : Thu May 15 07:11:53 2025  
 Response via : Initial Calibration  
 Integrator: ChemStation

Volume Inj. : 2 µl  
 Signal #1 Phase : ZB-MR1 Signal #2 Phase: ZB-MR2  
 Signal #1 Info : 30Mx0.32mmx 0.50µ Signal #2 Info : 30M x 0.32mm x 0.25µm

Compound	RT#1	RT#2	Resp#1	Resp#2	ng/ml	ng/ml
System Monitoring Compounds						
1) SA Tetrachlo...	3.679	3.675	328.3E6	290.4E6	55.803	53.272
2) SA Decachlor...	8.717	8.665	252.3E6	83105139	48.865	44.918
Target Compounds						
3) L1 AR-1016-1	4.768	4.752	5329813	4026493	23.682	21.089
4) L1 AR-1016-2	4.786	4.771	4371547	3176758	13.707	11.463
5) L1 AR-1016-3	4.844	4.948	2900882	1641821	13.360	11.240
6) L1 AR-1016-4	4.965	4.989	3832208	68226201	22.005	568.131 #
7) L1 AR-1016-5	5.220	5.201	49830588	40785160	283.142	264.152
8) L2 AR-1221-1	3.909	3.886	724912	165986	8.322	2.248 #
9) L2 AR-1221-2	3.981	3.973	6258468	5049876	98.243	92.805
10) L2 AR-1221-3	4.052	4.045	1459359	1652054	7.588	9.887 #
11) L3 AR-1232-1	4.052	4.045	1459359	1652054	9.527	12.650 #
12) L3 AR-1232-2	4.548	4.771	2666153	3176758	32.535	24.220 #
13) L3 AR-1232-3	4.786	4.948	4371547	1641821	28.586	24.119
14) L3 AR-1232-4	4.965	5.029	3832208	21328973	46.591	345.821 #
15) L3 AR-1232-5	5.006	5.201	84957900	40785160	1565.776	620.471 #
16) L4 AR-1242-1	4.768	4.752	5329813	4026493	27.876	24.993
17) L4 AR-1242-2	4.786	4.771	4371547	3176758	16.071	13.541
18) L4 AR-1242-3	4.844	4.948	2900882	1641821	15.597	13.281
19) L4 AR-1242-4	4.965	5.029	3832208	21328973	25.928	172.543 #
20) L4 AR-1242-5	5.616	5.552	27902848	160.6E6	179.391	1056.932 #
21) L5 AR-1248-1	4.768	4.752	5329813	4026493	34.798	31.038
22) L5 AR-1248-2	5.006	4.989	84957900	68226201	423.693	387.888
23) L5 AR-1248-3	5.220	5.029	49830588	21328973	194.647	113.685 #
24) L5 AR-1248-4	5.575	5.201	214.1E6	40785160	591.176	185.522 #
25) L5 AR-1248-5	5.616	5.592	27902848	21443940	106.477	98.220
26) L6 AR-1254-1	5.575	5.552	214.1E6	160.6E6	564.085	495.742
27) L6 AR-1254-2	5.724	5.699	189.3E6	138.4E6	579.350	488.793
28) L6 AR-1254-3	6.128	6.101	291.4E6	208.9E6	553.894	484.197
29) L6 AR-1254-4	6.359	6.329	196.8E6	123.2E6	585.713	497.925
30) L6 AR-1254-5	6.777	6.746	256.7E6	163.3E6	541.077	471.945
31) L7 AR-1260-1	6.260	6.232	139.8E6	99539321	458.468	398.335
32) L7 AR-1260-2	6.449	6.419	124.6E6	76197753	325.278	258.923
33) L7 AR-1260-3	6.846	6.570	21436493	76925156	61.495	268.295 #
34) L7 AR-1260-4	7.075	7.042	13098106	7530809	46.785	37.511
35) L7 AR-1260-5	7.318	7.283	31452548	17195827	43.690	37.414
36) L8 AR-1262-1	6.846	6.815	21436493	13838519	44.048	40.608
37) L8 AR-1262-2	7.318	7.283	31452548	17195827	38.903	34.196
38) L8 AR-1262-3	7.604	7.565	1144267	509412	3.383	2.715
39) L8 AR-1262-4	7.663	7.625	26518885	14074777	44.916	42.621
40) L8 AR-1262-5	8.165	8.122	2028099	392630	7.111	3.496 #
41) L9 AR-1268-1	7.604	7.565	1144267	509412	1.180	0.961

Data Path : Z:\pestpcbsrv\HPCHEM1\ECD\_0\Data\P0060925\  
 Data File : P0111544.D  
 Signal(s) : Signal #1: ECD1A.ch Signal #2: ECD2B.ch  
 Acq On : 09 Jun 2025 10:51  
 Operator : YP/AJ  
 Sample : AR1254CCC500  
 Misc :  
 ALS Vial : 6 Sample Multiplier: 1

Instrument :  
 ECD\_0  
 ClientSampleId :  
 AR1254CCC500

Integration File signal 1: autoint1.e  
 Integration File signal 2: autoint2.e  
 Quant Time: Jun 10 01:50:24 2025  
 Quant Method : Z:\pestpcbsrv\HPCHEM1\ECD\_0\methods\P0051525.M  
 Quant Title : GC EXTRACTABLES  
 QLast Update : Thu May 15 07:11:53 2025  
 Response via : Initial Calibration  
 Integrator: ChemStation

Volume Inj. : 2 µl  
 Signal #1 Phase : ZB-MR1 Signal #2 Phase: ZB-MR2  
 Signal #1 Info : 30Mx0.32mmx 0.50µ Signal #2 Info : 30M x 0.32mm x 0.25µm

	Compound	RT#1	RT#2	Resp#1	Resp#2	ng/ml	ng/ml
42)	L9 AR-1268-2	7.663	7.625	26518885	14074777	29.713	29.180
43)	L9 AR-1268-3	7.874	7.834	492612	406070	0.649	1.165 #
44)	L9 AR-1268-4	8.165	8.122	2028099	392630	6.210	3.085 #
45)	L9 AR-1268-5	8.460	8.410	2148415	668304	0.995	0.888

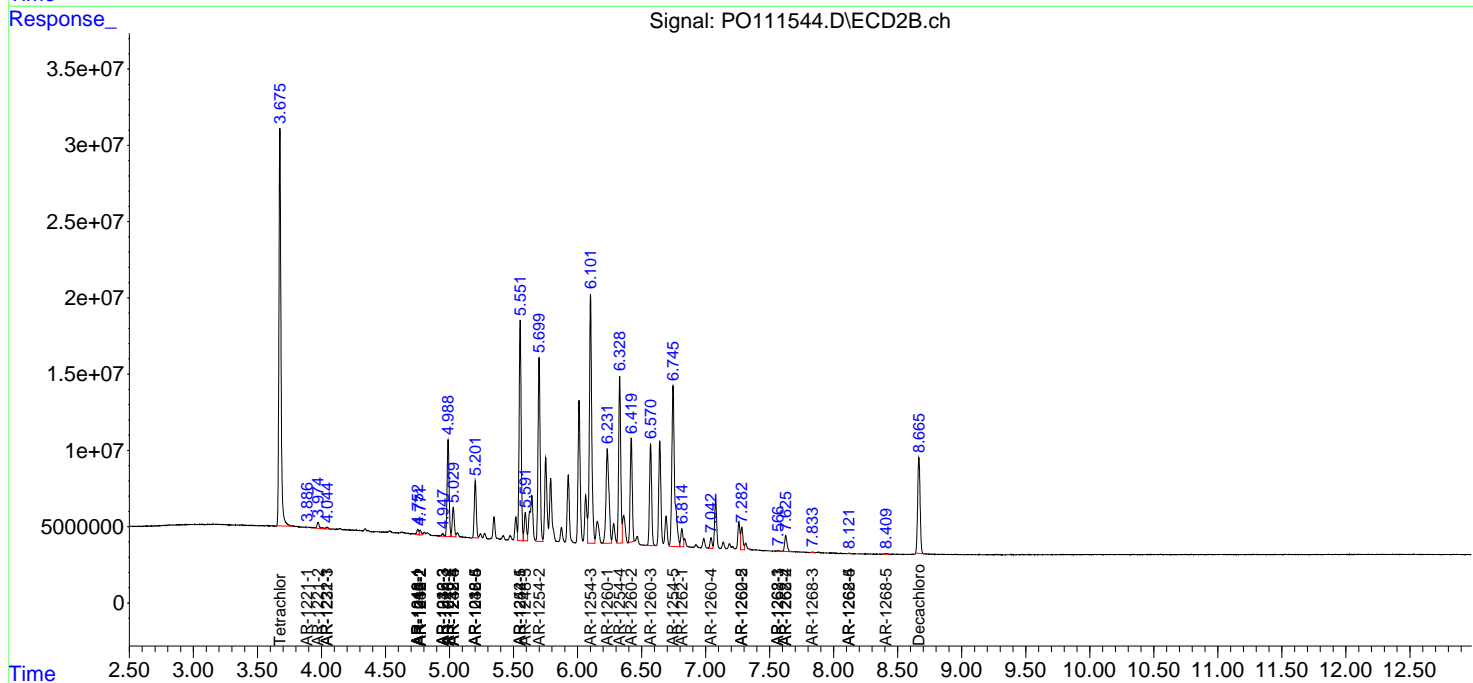
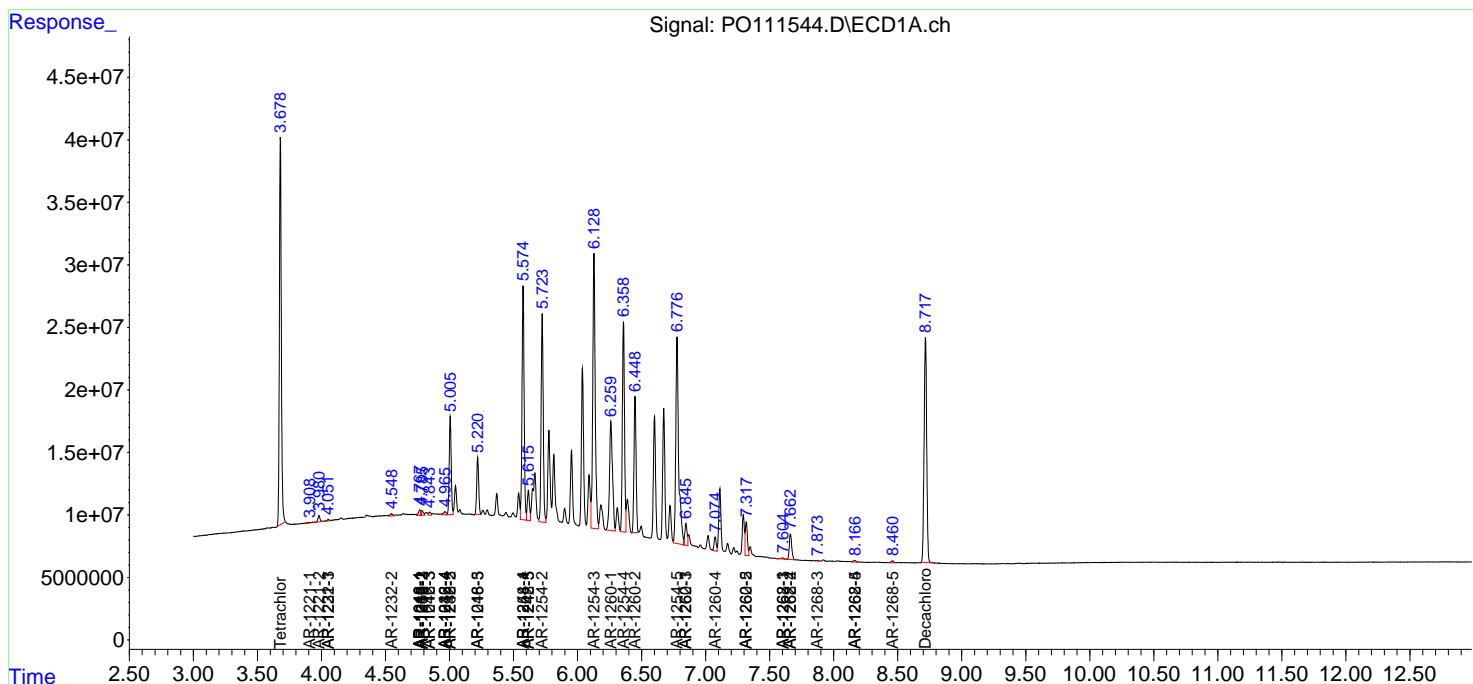
(f)=RT Delta > 1/2 Window (#)=Amounts differ by > 25% (m)=manual int.

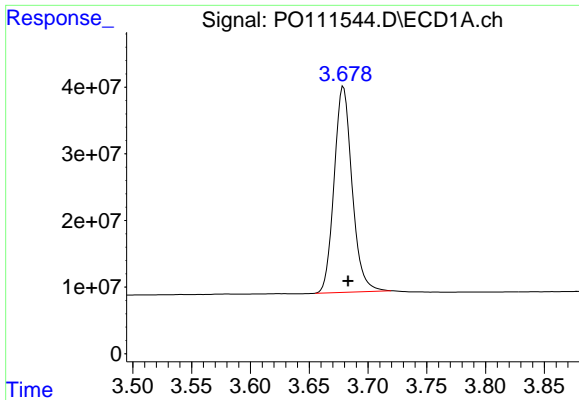
Data Path : Z:\pestpcbsrv\HPCHEM1\ECD\_O\Data\P0060925\  
 Data File : P0111544.D  
 Signal(s) : Signal #1: ECD1A.ch Signal #2: ECD2B.ch  
 Acq On : 09 Jun 2025 10:51  
 Operator : YP/AJ  
 Sample : AR1254CCC500  
 Misc :  
 ALS Vial : 6 Sample Multiplier: 1

Instrument :  
 ECD\_O  
 ClientSampleId :  
 AR1254CCC500

Integration File signal 1: autoint1.e  
 Integration File signal 2: autoint2.e  
 Quant Time: Jun 10 01:50:24 2025  
 Quant Method : Z:\pestpcbsrv\HPCHEM1\ECD\_O\methods\P0051525.M  
 Quant Title : GC EXTRACTABLES  
 QLast Update : Thu May 15 07:11:53 2025  
 Response via : Initial Calibration  
 Integrator: ChemStation

Volume Inj. : 2 µl  
 Signal #1 Phase : ZB-MR1 Signal #2 Phase: ZB-MR2  
 Signal #1 Info : 30Mx0.32mmx 0.50µ Signal #2 Info : 30M x 0.32mm x 0.25µm

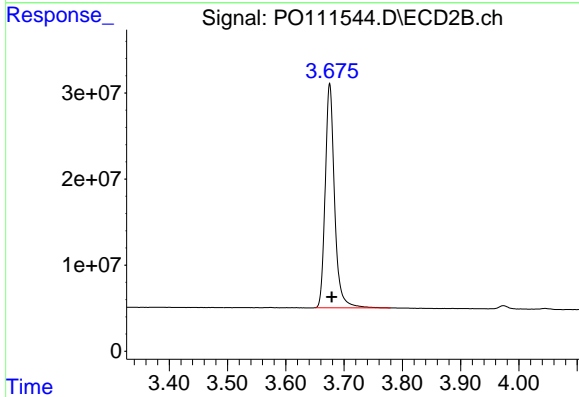




#1 Tetrachloro-m-xylene

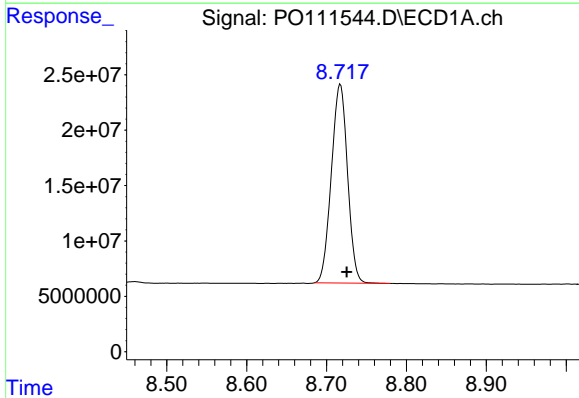
R.T.: 3.679 min  
 Delta R.T.: -0.004 min  
 Response: 328302974  
 Conc: 55.80 ng/ml

Instrument :  
 ECD\_O  
 ClientSampleId :  
 AR1254CCC500



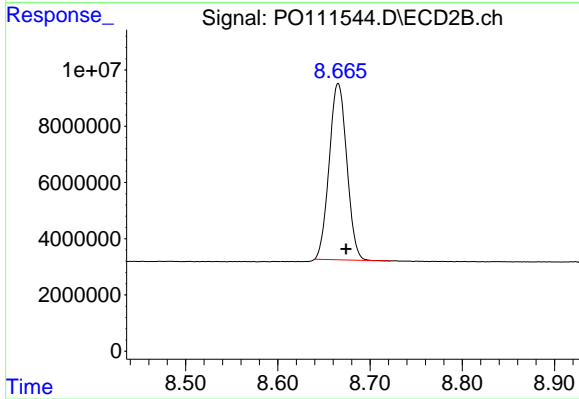
#1 Tetrachloro-m-xylene

R.T.: 3.675 min  
 Delta R.T.: -0.004 min  
 Response: 290407820  
 Conc: 53.27 ng/ml



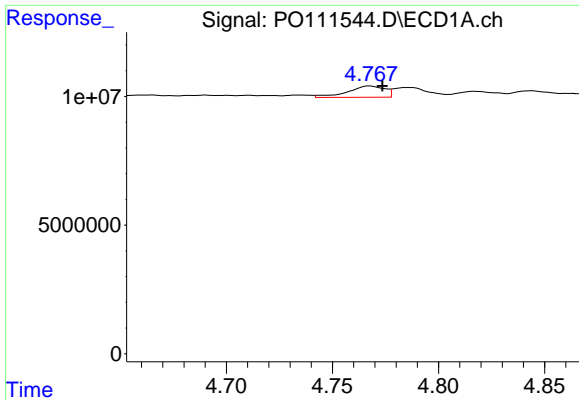
#2 Decachlorobiphenyl

R.T.: 8.717 min  
 Delta R.T.: -0.008 min  
 Response: 252283777  
 Conc: 48.87 ng/ml



#2 Decachlorobiphenyl

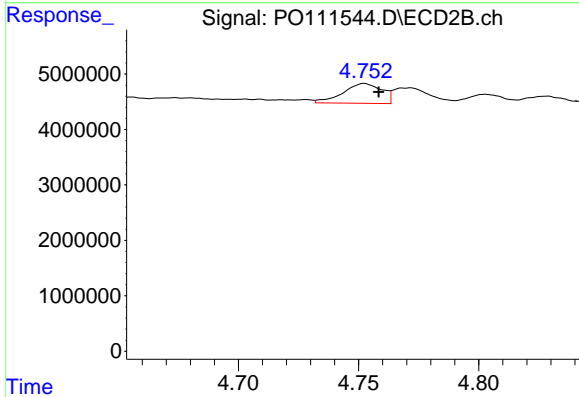
R.T.: 8.665 min  
 Delta R.T.: -0.009 min  
 Response: 83105139  
 Conc: 44.92 ng/ml



#3 AR-1016-1

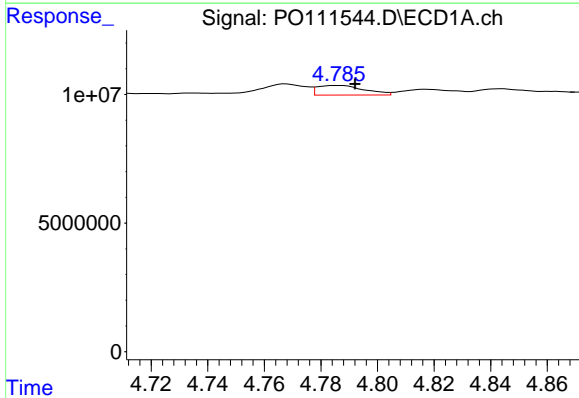
R.T.: 4.768 min  
 Delta R.T.: -0.006 min  
 Response: 5329813  
 Conc: 23.68 ng/ml

Instrument :  
 ECD\_O  
 ClientSampleId :  
 AR1254CCC500



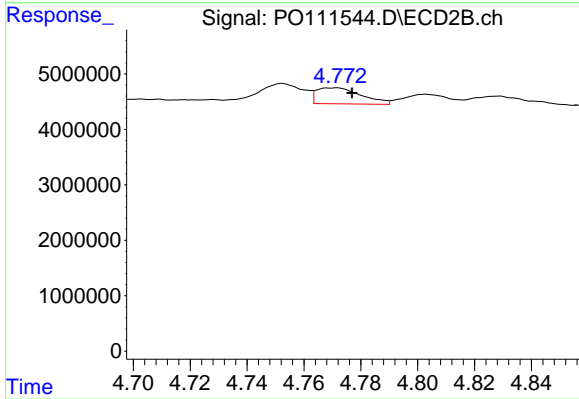
#3 AR-1016-1

R.T.: 4.752 min  
 Delta R.T.: -0.006 min  
 Response: 4026493  
 Conc: 21.09 ng/ml



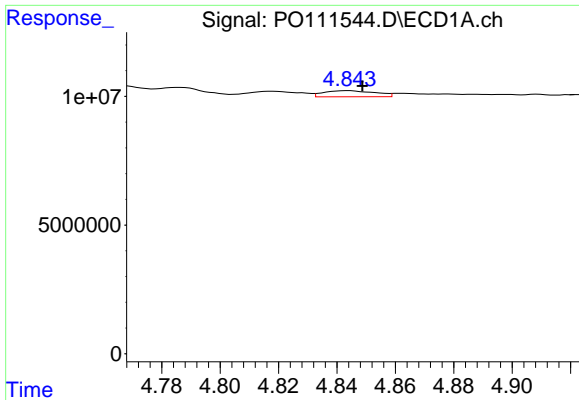
#4 AR-1016-2

R.T.: 4.786 min  
 Delta R.T.: -0.006 min  
 Response: 4371547  
 Conc: 13.71 ng/ml



#4 AR-1016-2

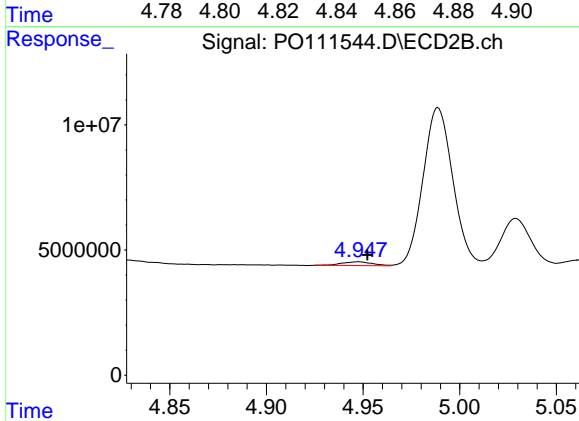
R.T.: 4.771 min  
 Delta R.T.: -0.006 min  
 Response: 3176758  
 Conc: 11.46 ng/ml



#5 AR-1016-3

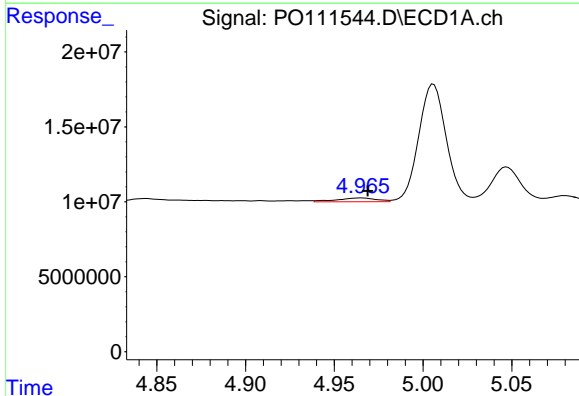
R.T.: 4.844 min  
 Delta R.T.: -0.005 min  
 Response: 2900882  
 Conc: 13.36 ng/ml

Instrument :  
 ECD\_O  
 ClientSampleId :  
 AR1254CCC500



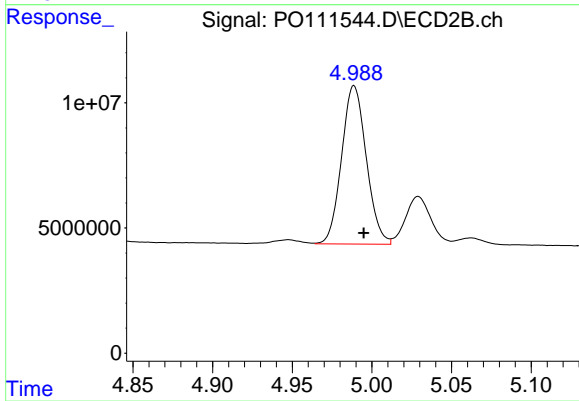
#5 AR-1016-3

R.T.: 4.948 min  
 Delta R.T.: -0.005 min  
 Response: 1641821  
 Conc: 11.24 ng/ml



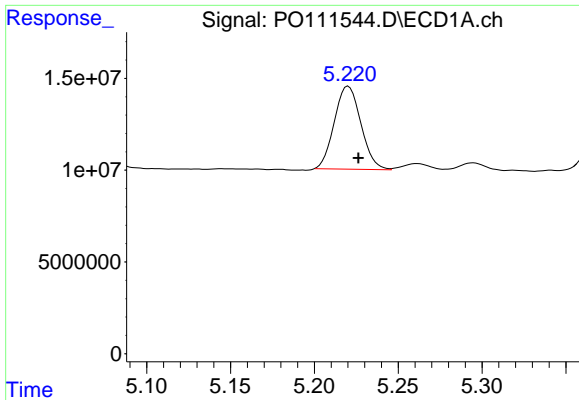
#6 AR-1016-4

R.T.: 4.965 min  
 Delta R.T.: -0.004 min  
 Response: 3832208  
 Conc: 22.01 ng/ml



#6 AR-1016-4

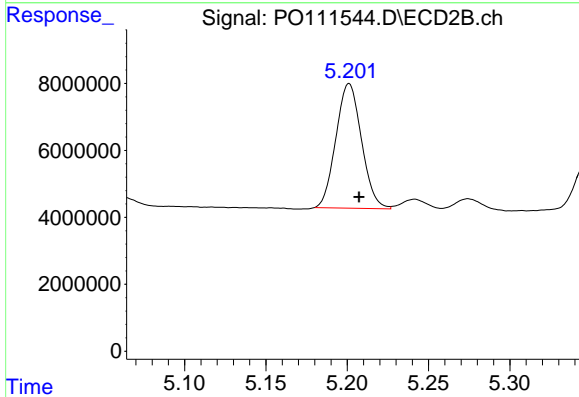
R.T.: 4.989 min  
 Delta R.T.: -0.006 min  
 Response: 68226201  
 Conc: 568.13 ng/ml



#7 AR-1016-5

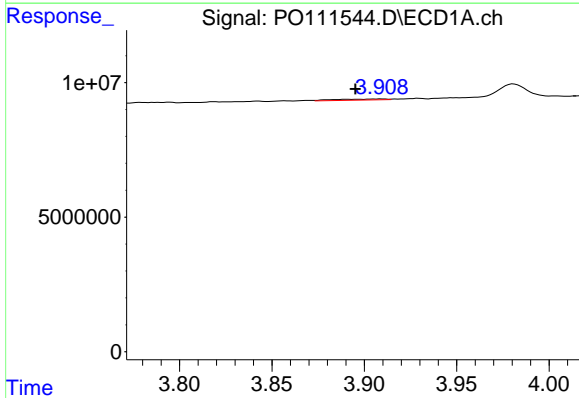
R.T.: 5.220 min  
 Delta R.T.: -0.006 min  
 Response: 49830588  
 Conc: 283.14 ng/ml

Instrument :  
 ECD\_O  
 ClientSampleId :  
 AR1254CCC500



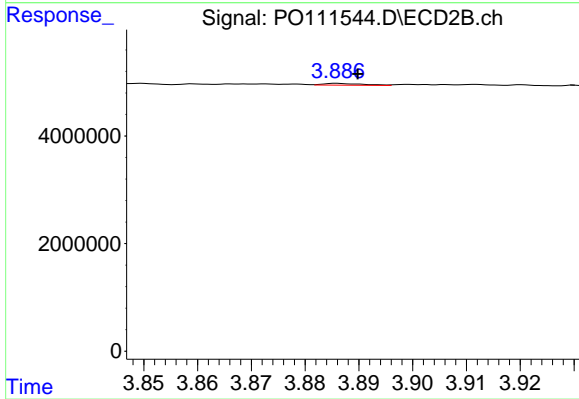
#7 AR-1016-5

R.T.: 5.201 min  
 Delta R.T.: -0.006 min  
 Response: 40785160  
 Conc: 264.15 ng/ml



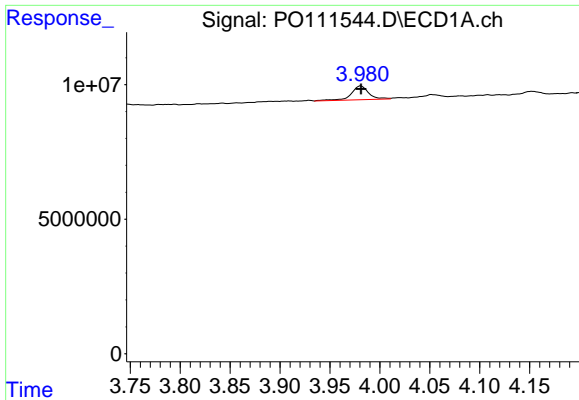
#8 AR-1221-1

R.T.: 3.909 min  
 Delta R.T.: 0.014 min  
 Response: 724912  
 Conc: 8.32 ng/ml



#8 AR-1221-1

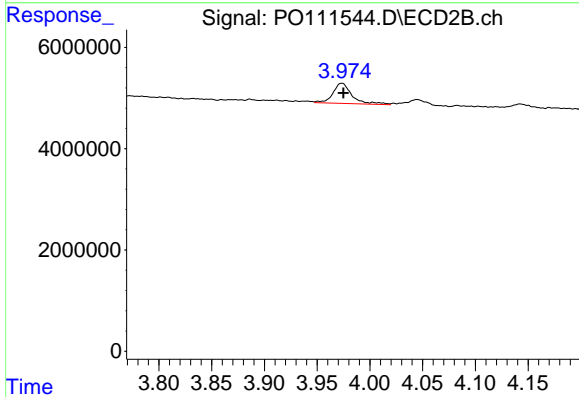
R.T.: 3.886 min  
 Delta R.T.: -0.004 min  
 Response: 165986  
 Conc: 2.25 ng/ml



#9 AR-1221-2

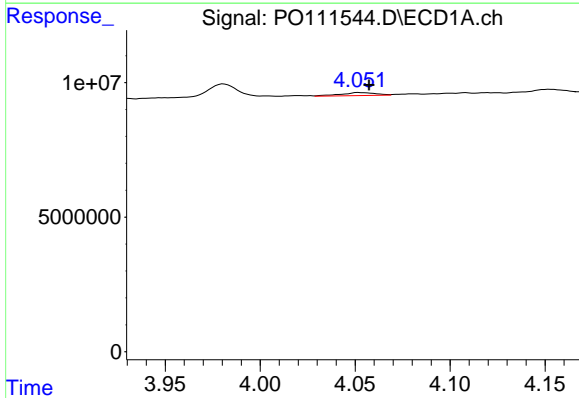
R.T.: 3.981 min  
 Delta R.T.: 0.000 min  
 Response: 6258468  
 Conc: 98.24 ng/ml

Instrument :  
 ECD\_O  
 ClientSampleId :  
 AR1254CCC500



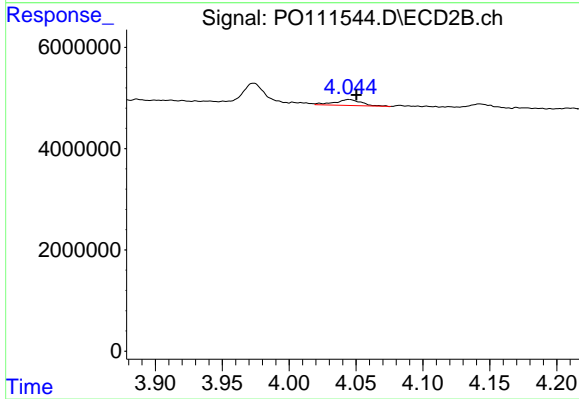
#9 AR-1221-2

R.T.: 3.973 min  
 Delta R.T.: -0.001 min  
 Response: 5049876  
 Conc: 92.80 ng/ml



#10 AR-1221-3

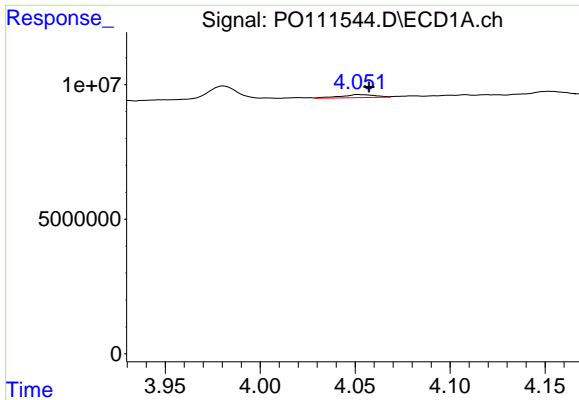
R.T.: 4.052 min  
 Delta R.T.: -0.005 min  
 Response: 1459359  
 Conc: 7.59 ng/ml



#10 AR-1221-3

R.T.: 4.045 min  
 Delta R.T.: -0.006 min  
 Response: 1652054  
 Conc: 9.89 ng/ml

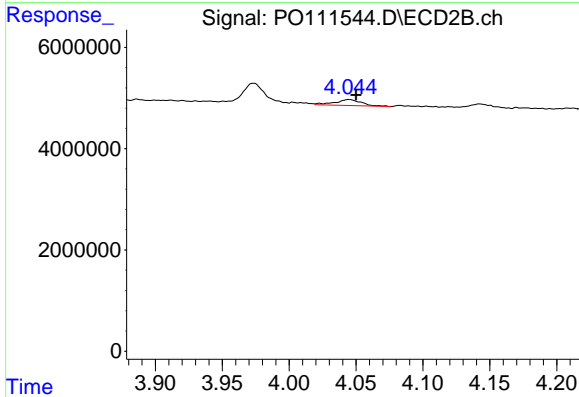




#11 AR-1232-1

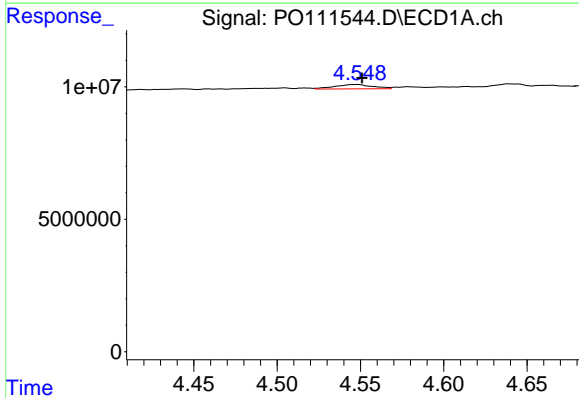
R.T.: 4.052 min  
 Delta R.T.: -0.005 min  
 Response: 1459359  
 Conc: 9.53 ng/ml

Instrument :  
 ECD\_O  
 ClientSampleId :  
 AR1254CCC500



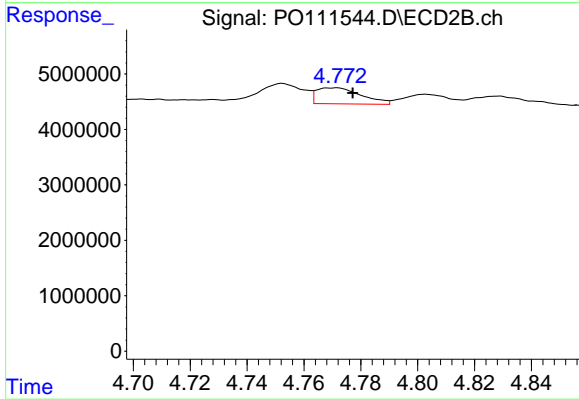
#11 AR-1232-1

R.T.: 4.045 min  
 Delta R.T.: -0.005 min  
 Response: 1652054  
 Conc: 12.65 ng/ml



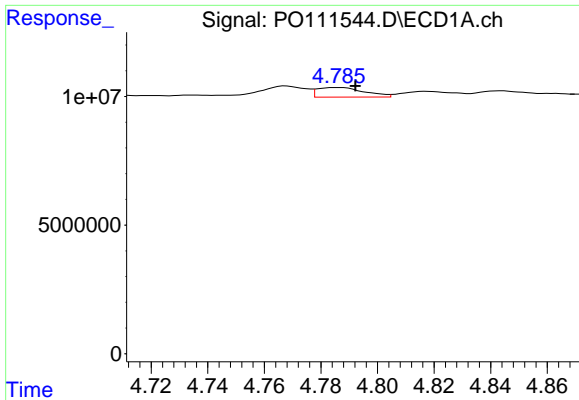
#12 AR-1232-2

R.T.: 4.548 min  
 Delta R.T.: -0.003 min  
 Response: 2666153  
 Conc: 32.54 ng/ml



#12 AR-1232-2

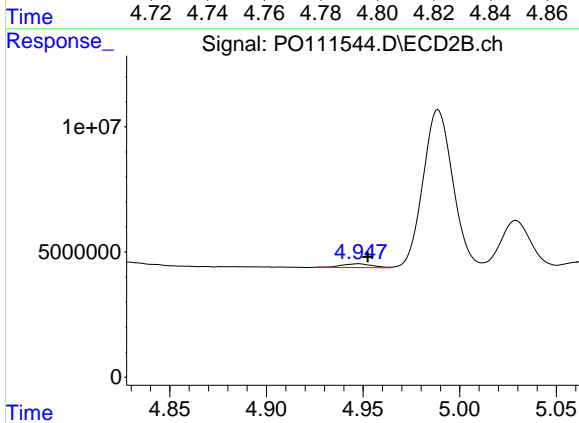
R.T.: 4.771 min  
 Delta R.T.: -0.006 min  
 Response: 3176758  
 Conc: 24.22 ng/ml



#13 AR-1232-3

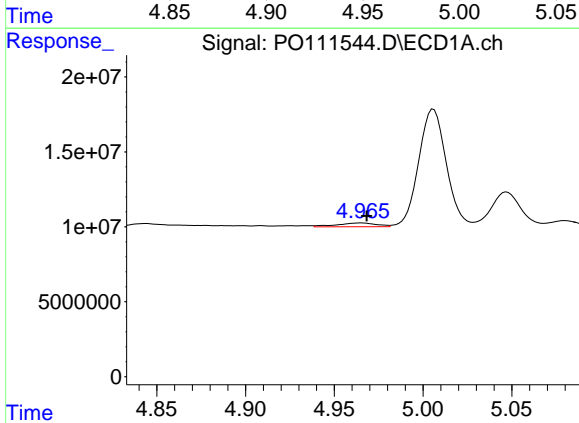
R.T.: 4.786 min  
 Delta R.T.: -0.006 min  
 Response: 4371547  
 Conc: 28.59 ng/ml

Instrument :  
 ECD\_O  
 ClientSampleId :  
 AR1254CCC500



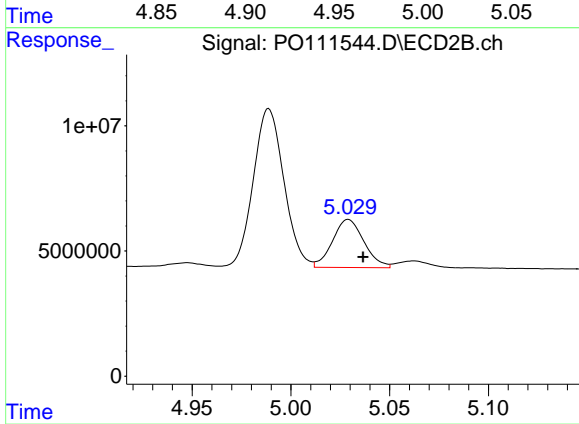
#13 AR-1232-3

R.T.: 4.948 min  
 Delta R.T.: -0.005 min  
 Response: 1641821  
 Conc: 24.12 ng/ml



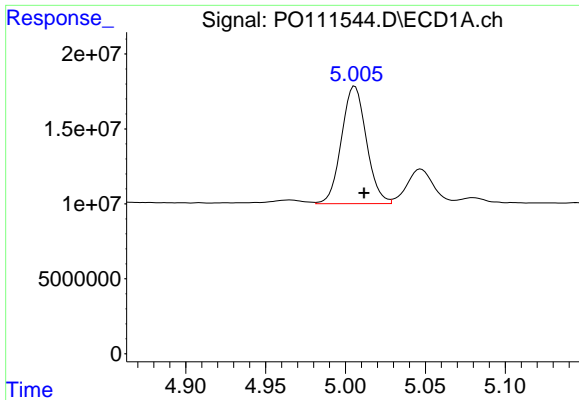
#14 AR-1232-4

R.T.: 4.965 min  
 Delta R.T.: -0.003 min  
 Response: 3832208  
 Conc: 46.59 ng/ml



#14 AR-1232-4

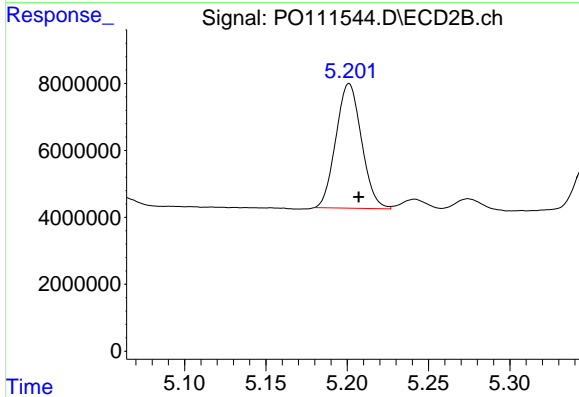
R.T.: 5.029 min  
 Delta R.T.: -0.008 min  
 Response: 21328973  
 Conc: 345.82 ng/ml



#15 AR-1232-5

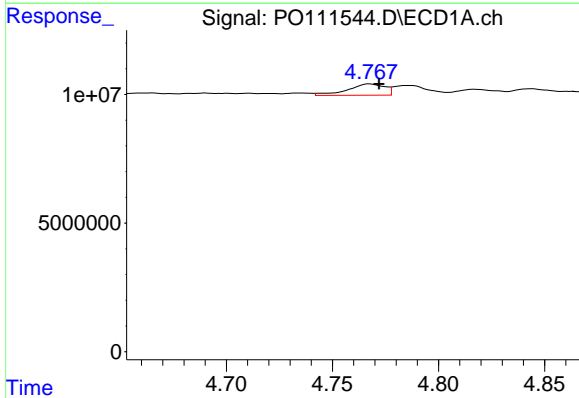
R.T.: 5.006 min  
 Delta R.T.: -0.006 min  
 Response: 84957900  
 Conc: 1565.78 ng/ml

Instrument :  
 ECD\_O  
 ClientSampleId :  
 AR1254CCC500



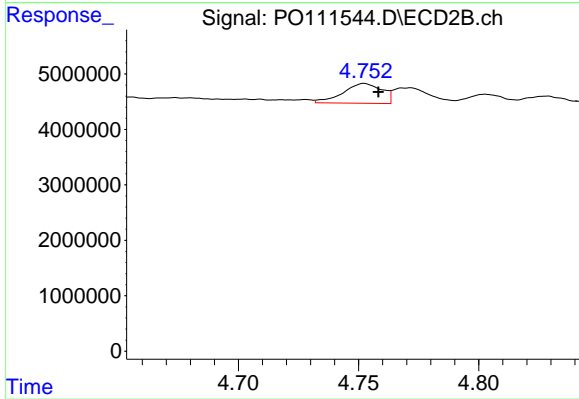
#15 AR-1232-5

R.T.: 5.201 min  
 Delta R.T.: -0.006 min  
 Response: 40785160  
 Conc: 620.47 ng/ml



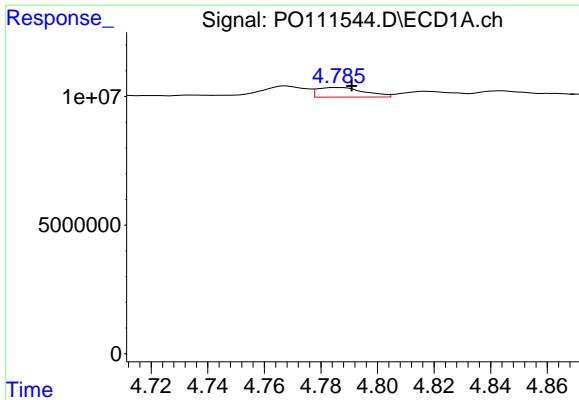
#16 AR-1242-1

R.T.: 4.768 min  
 Delta R.T.: -0.004 min  
 Response: 5329813  
 Conc: 27.88 ng/ml



#16 AR-1242-1

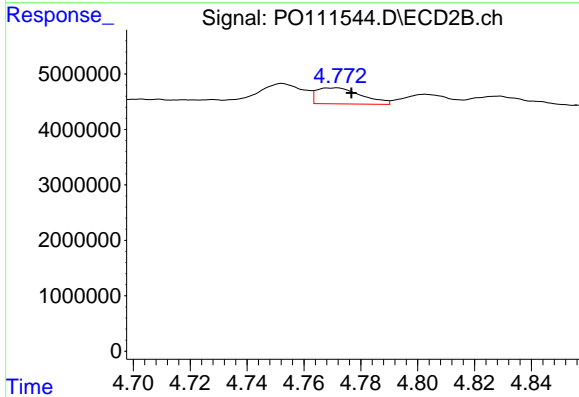
R.T.: 4.752 min  
 Delta R.T.: -0.006 min  
 Response: 4026493  
 Conc: 24.99 ng/ml



#17 AR-1242-2

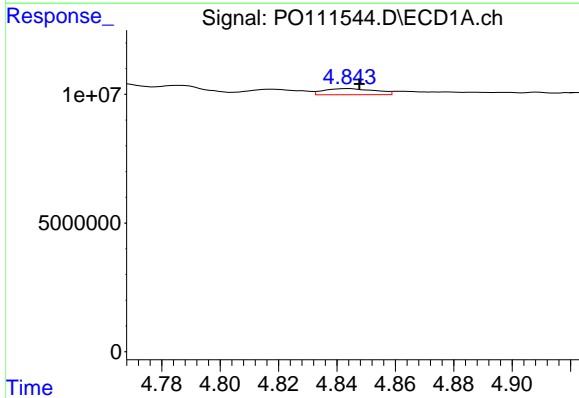
R.T.: 4.786 min  
 Delta R.T.: -0.005 min  
 Response: 4371547  
 Conc: 16.07 ng/ml

Instrument :  
 ECD\_O  
 ClientSampleId :  
 AR1254CCC500



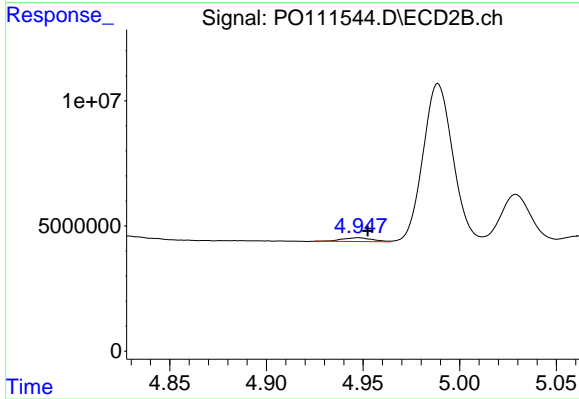
#17 AR-1242-2

R.T.: 4.771 min  
 Delta R.T.: -0.006 min  
 Response: 3176758  
 Conc: 13.54 ng/ml



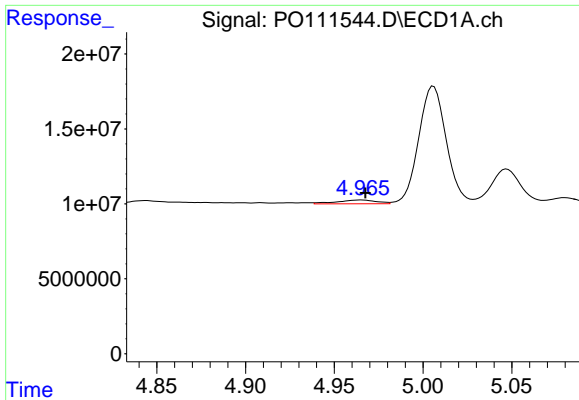
#18 AR-1242-3

R.T.: 4.844 min  
 Delta R.T.: -0.004 min  
 Response: 2900882  
 Conc: 15.60 ng/ml



#18 AR-1242-3

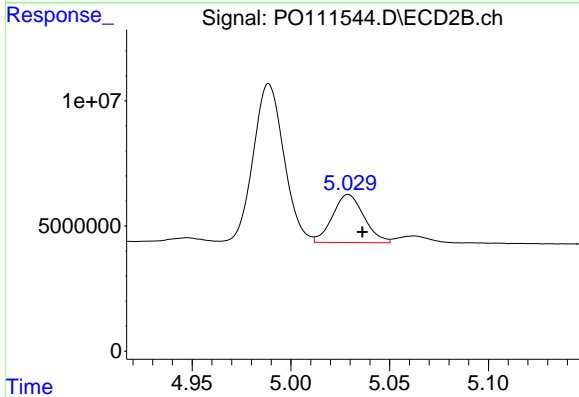
R.T.: 4.948 min  
 Delta R.T.: -0.005 min  
 Response: 1641821  
 Conc: 13.28 ng/ml



#19 AR-1242-4

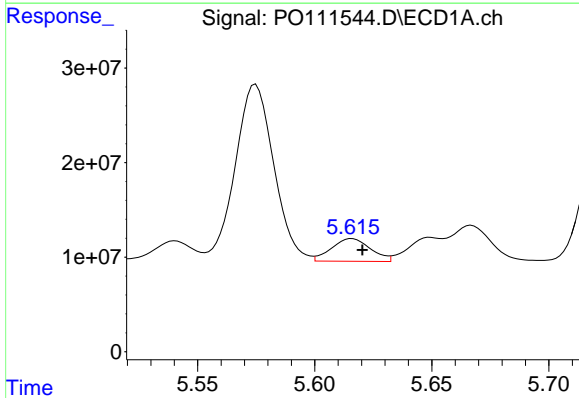
R.T.: 4.965 min  
 Delta R.T.: -0.002 min  
 Response: 3832208  
 Conc: 25.93 ng/ml

Instrument :  
 ECD\_O  
 ClientSampleId :  
 AR1254CCC500



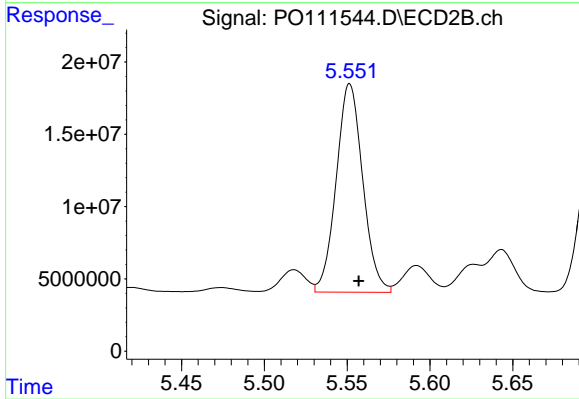
#19 AR-1242-4

R.T.: 5.029 min  
 Delta R.T.: -0.007 min  
 Response: 21328973  
 Conc: 172.54 ng/ml



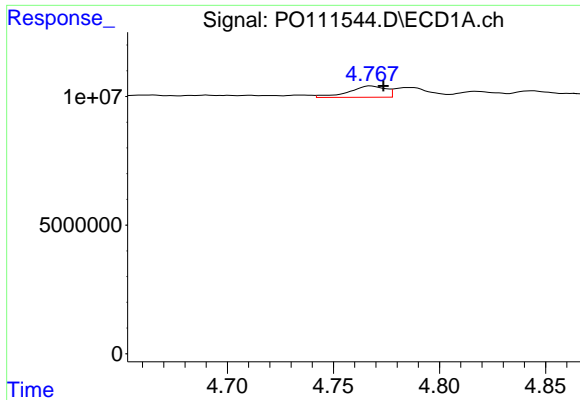
#20 AR-1242-5

R.T.: 5.616 min  
 Delta R.T.: -0.004 min  
 Response: 27902848  
 Conc: 179.39 ng/ml



#20 AR-1242-5

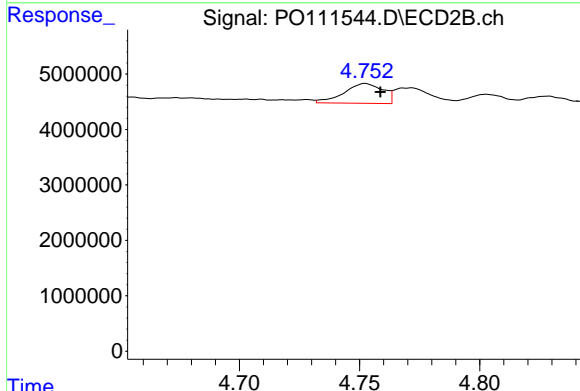
R.T.: 5.552 min  
 Delta R.T.: -0.005 min  
 Response: 160639611  
 Conc: 1056.93 ng/ml



#21 AR-1248-1

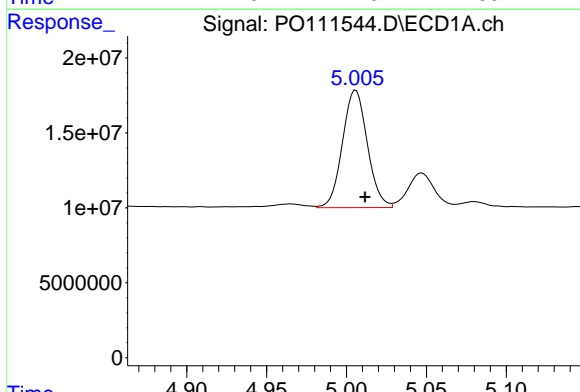
R.T.: 4.768 min  
 Delta R.T.: -0.006 min  
 Response: 5329813  
 Conc: 34.80 ng/ml

Instrument :  
 ECD\_O  
 ClientSampleId :  
 AR1254CCC500



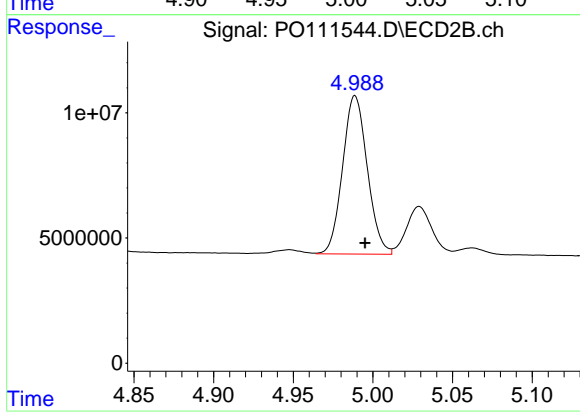
#21 AR-1248-1

R.T.: 4.752 min  
 Delta R.T.: -0.006 min  
 Response: 4026493  
 Conc: 31.04 ng/ml



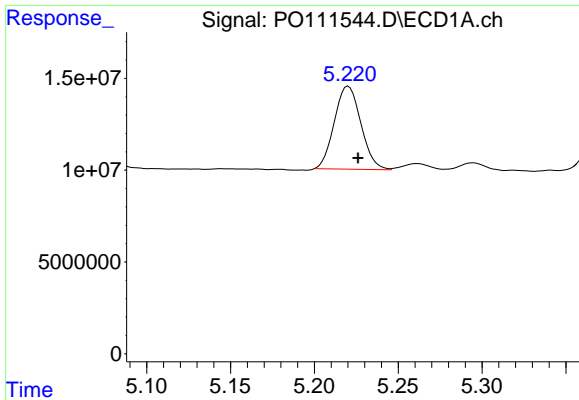
#22 AR-1248-2

R.T.: 5.006 min  
 Delta R.T.: -0.006 min  
 Response: 84957900  
 Conc: 423.69 ng/ml



#22 AR-1248-2

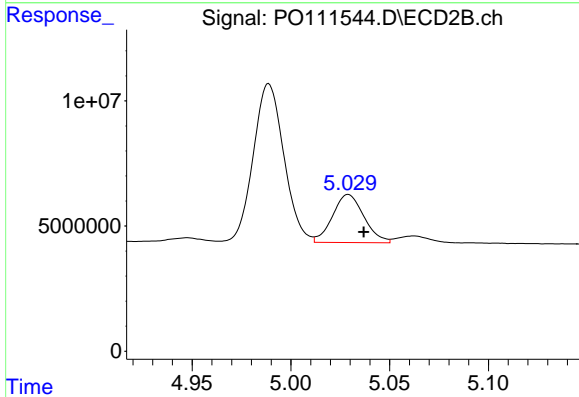
R.T.: 4.989 min  
 Delta R.T.: -0.006 min  
 Response: 68226201  
 Conc: 387.89 ng/ml



#23 AR-1248-3

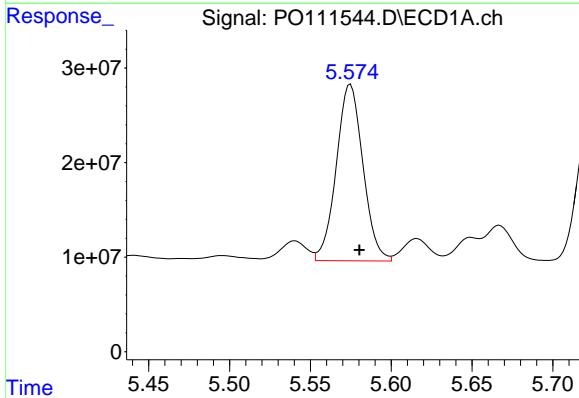
R.T.: 5.220 min  
 Delta R.T.: -0.006 min  
 Response: 49830588  
 Conc: 194.65 ng/ml

Instrument :  
 ECD\_O  
 ClientSampleId :  
 AR1254CCC500



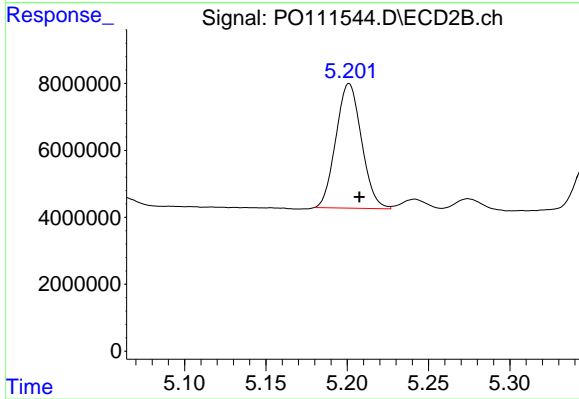
#23 AR-1248-3

R.T.: 5.029 min  
 Delta R.T.: -0.008 min  
 Response: 21328973  
 Conc: 113.69 ng/ml



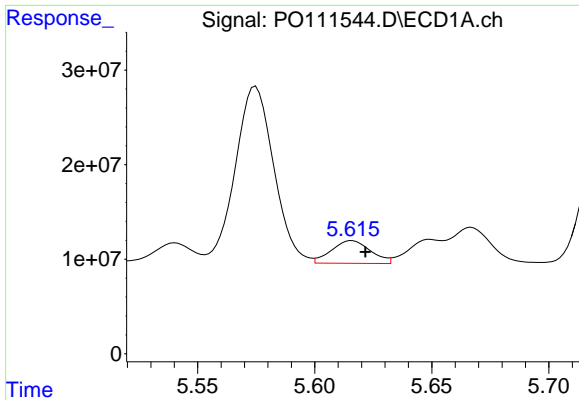
#24 AR-1248-4

R.T.: 5.575 min  
 Delta R.T.: -0.006 min  
 Response: 214112723  
 Conc: 591.18 ng/ml



#24 AR-1248-4

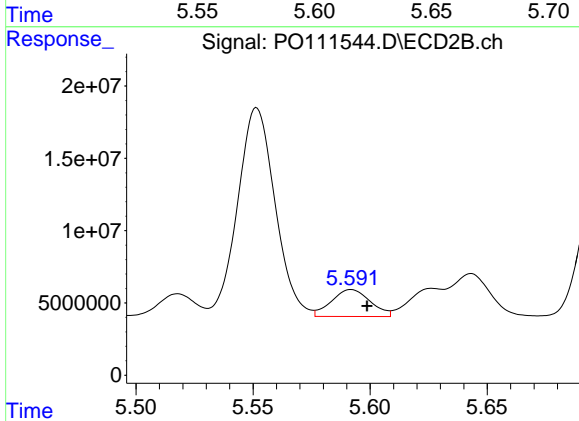
R.T.: 5.201 min  
 Delta R.T.: -0.006 min  
 Response: 40785160  
 Conc: 185.52 ng/ml



#25 AR-1248-5

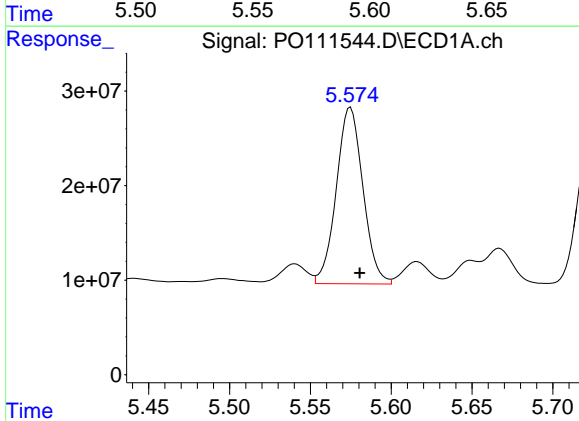
R.T.: 5.616 min  
 Delta R.T.: -0.006 min  
 Response: 27902848  
 Conc: 106.48 ng/ml

Instrument :  
 ECD\_O  
 ClientSampleId :  
 AR1254CCC500



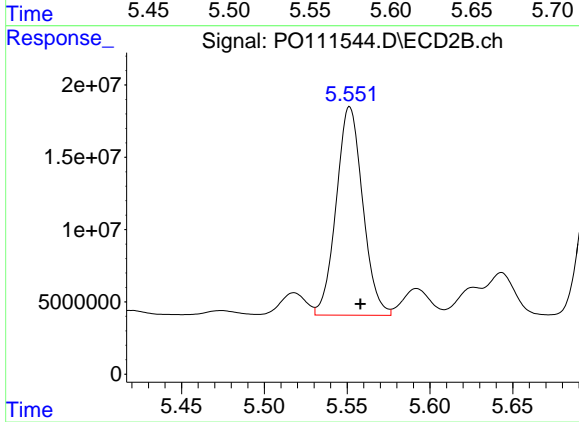
#25 AR-1248-5

R.T.: 5.592 min  
 Delta R.T.: -0.007 min  
 Response: 21443940  
 Conc: 98.22 ng/ml



#26 AR-1254-1

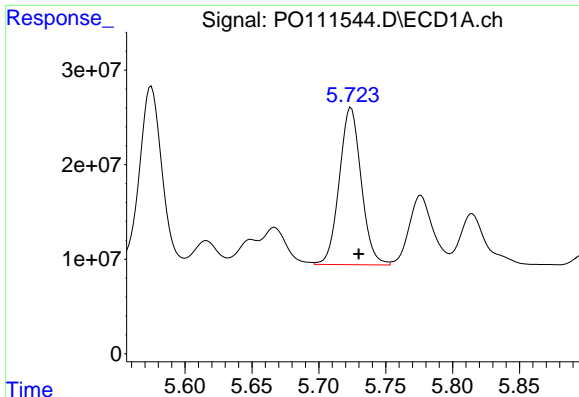
R.T.: 5.575 min  
 Delta R.T.: -0.006 min  
 Response: 214112723  
 Conc: 564.09 ng/ml



#26 AR-1254-1

R.T.: 5.552 min  
 Delta R.T.: -0.007 min  
 Response: 160639611  
 Conc: 495.74 ng/ml

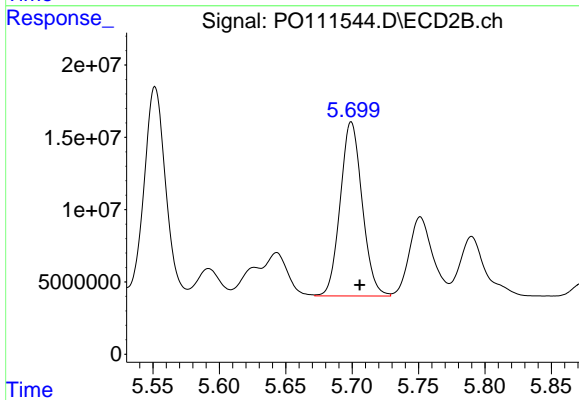




#27 AR-1254-2

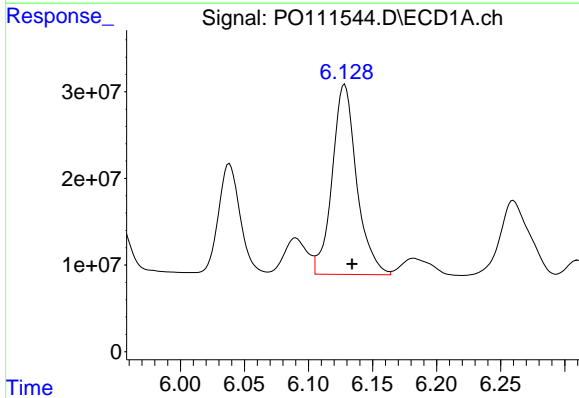
R.T.: 5.724 min  
 Delta R.T.: -0.006 min  
 Response: 189317235  
 Conc: 579.35 ng/ml

Instrument :  
 ECD\_O  
 ClientSampleId :  
 AR1254CCC500



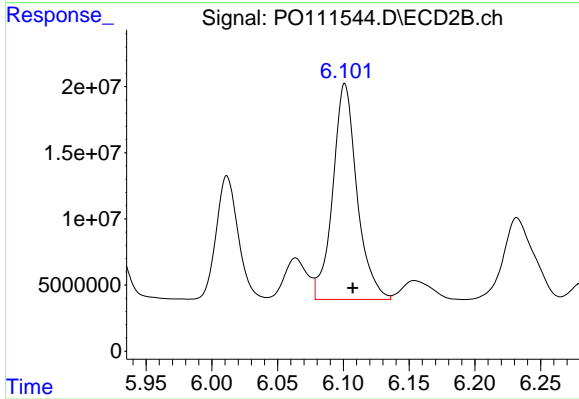
#27 AR-1254-2

R.T.: 5.699 min  
 Delta R.T.: -0.006 min  
 Response: 138448038  
 Conc: 488.79 ng/ml



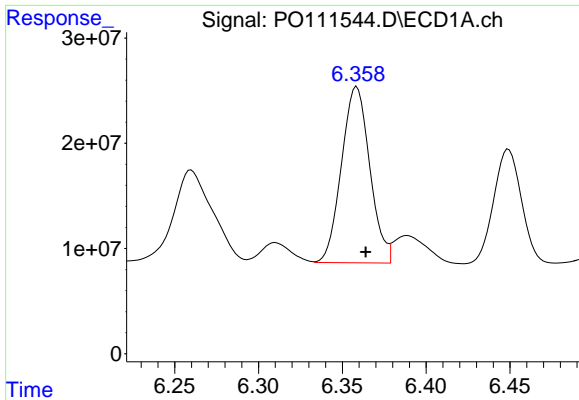
#28 AR-1254-3

R.T.: 6.128 min  
 Delta R.T.: -0.006 min  
 Response: 291427581  
 Conc: 553.89 ng/ml



#28 AR-1254-3

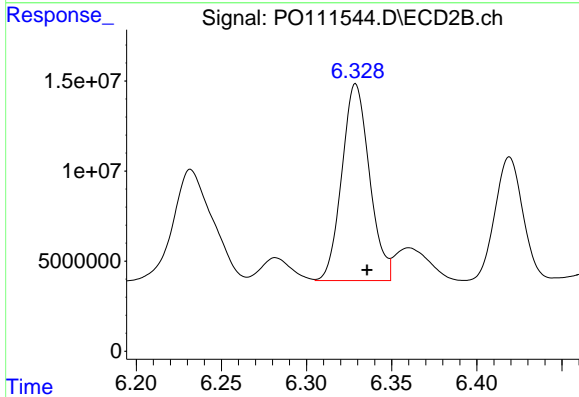
R.T.: 6.101 min  
 Delta R.T.: -0.006 min  
 Response: 208907867  
 Conc: 484.20 ng/ml



#29 AR-1254-4

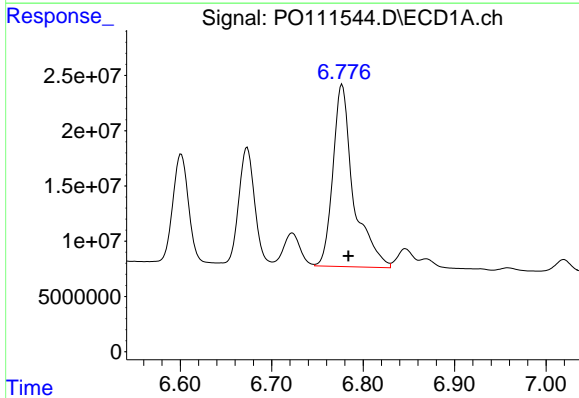
R.T.: 6.359 min  
 Delta R.T.: -0.005 min  
 Response: 196845501  
 Conc: 585.71 ng/ml

Instrument :  
 ECD\_O  
 ClientSampleId :  
 AR1254CCC500



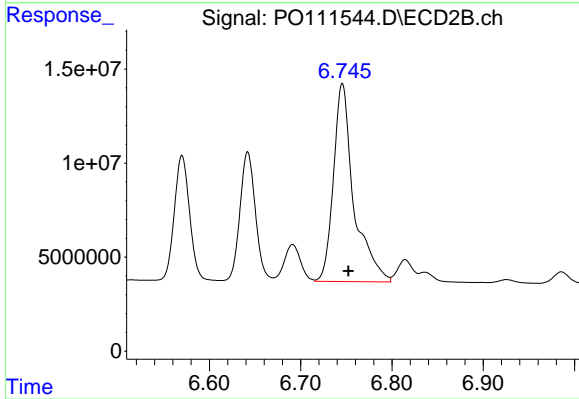
#29 AR-1254-4

R.T.: 6.329 min  
 Delta R.T.: -0.007 min  
 Response: 123158607  
 Conc: 497.92 ng/ml



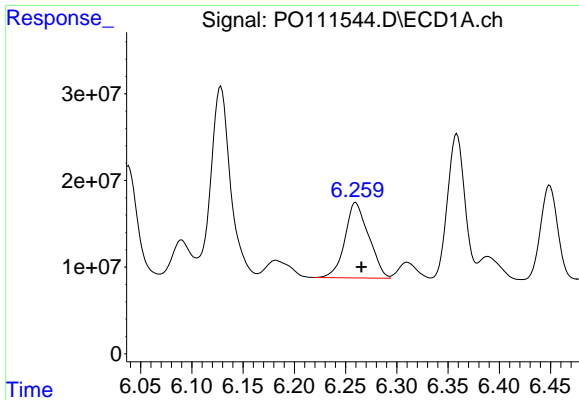
#30 AR-1254-5

R.T.: 6.777 min  
 Delta R.T.: -0.007 min  
 Response: 256716727  
 Conc: 541.08 ng/ml



#30 AR-1254-5

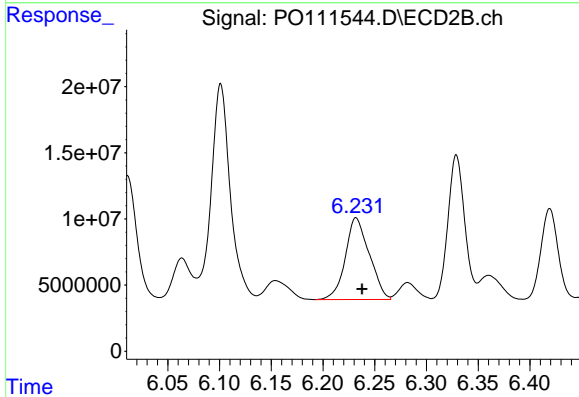
R.T.: 6.746 min  
 Delta R.T.: -0.007 min  
 Response: 163264823  
 Conc: 471.95 ng/ml



#31 AR-1260-1

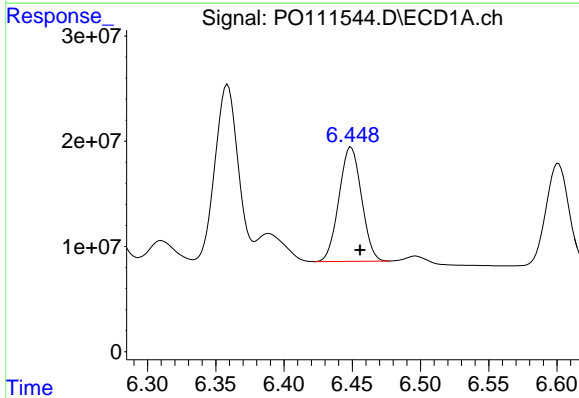
R.T.: 6.260 min  
 Delta R.T.: -0.006 min  
 Response: 139818031  
 Conc: 458.47 ng/ml

Instrument :  
 ECD\_O  
 ClientSampleId :  
 AR1254CCC500



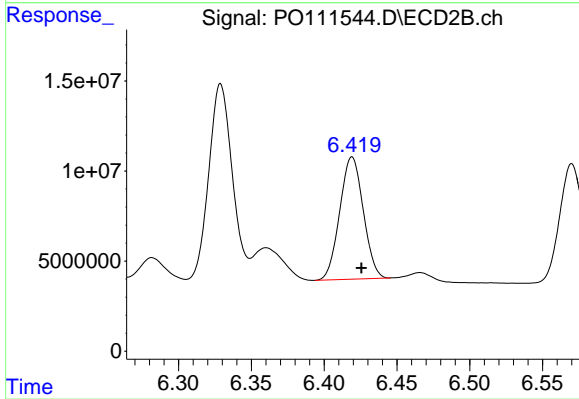
#31 AR-1260-1

R.T.: 6.232 min  
 Delta R.T.: -0.006 min  
 Response: 99539321  
 Conc: 398.33 ng/ml



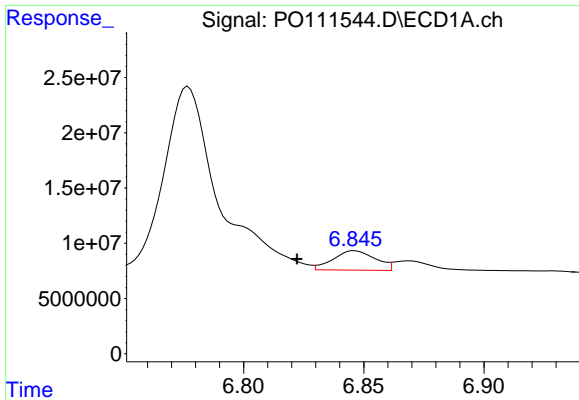
#32 AR-1260-2

R.T.: 6.449 min  
 Delta R.T.: -0.006 min  
 Response: 124565404  
 Conc: 325.28 ng/ml



#32 AR-1260-2

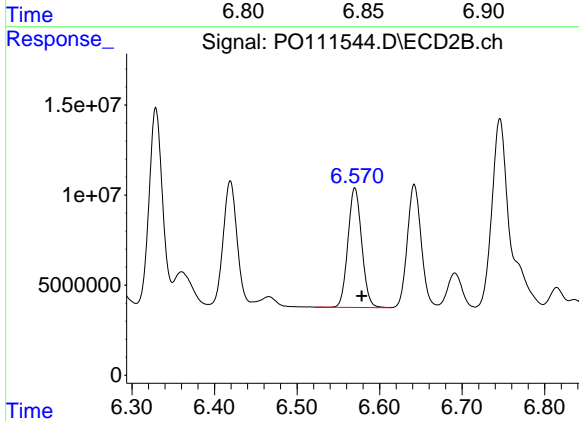
R.T.: 6.419 min  
 Delta R.T.: -0.006 min  
 Response: 76197753  
 Conc: 258.92 ng/ml



#33 AR-1260-3

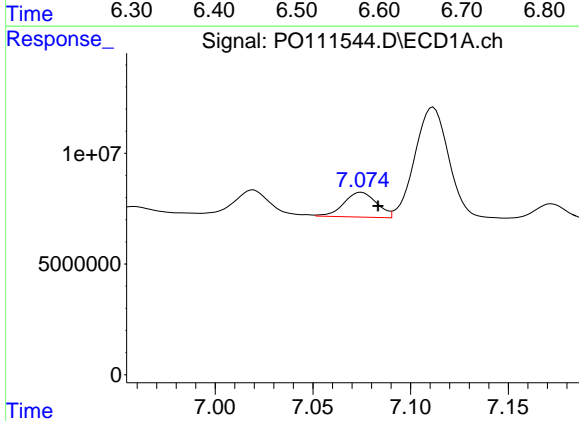
R.T.: 6.846 min  
 Delta R.T.: 0.024 min  
 Response: 21436493  
 Conc: 61.50 ng/ml

Instrument :  
 ECD\_O  
 ClientSampleId :  
 AR1254CCC500



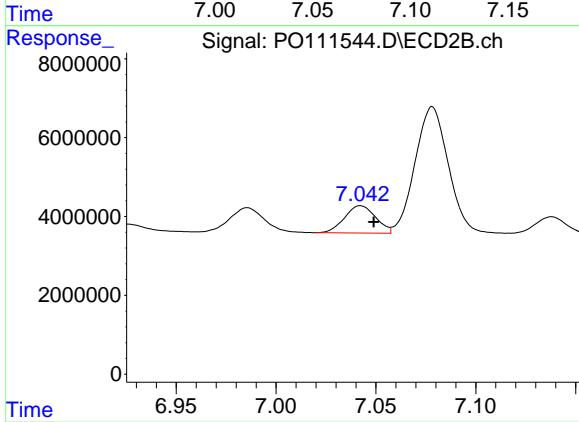
#33 AR-1260-3

R.T.: 6.570 min  
 Delta R.T.: -0.009 min  
 Response: 76925156  
 Conc: 268.29 ng/ml



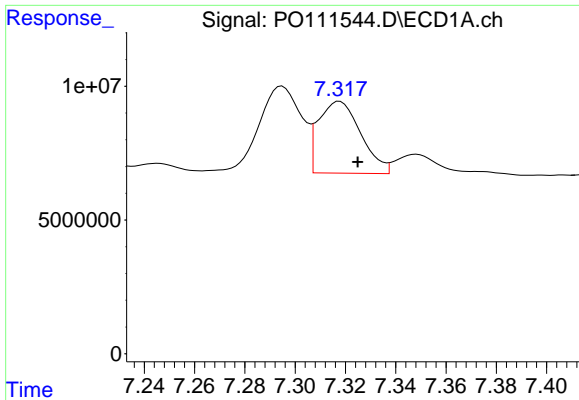
#34 AR-1260-4

R.T.: 7.075 min  
 Delta R.T.: -0.009 min  
 Response: 13098106  
 Conc: 46.79 ng/ml



#34 AR-1260-4

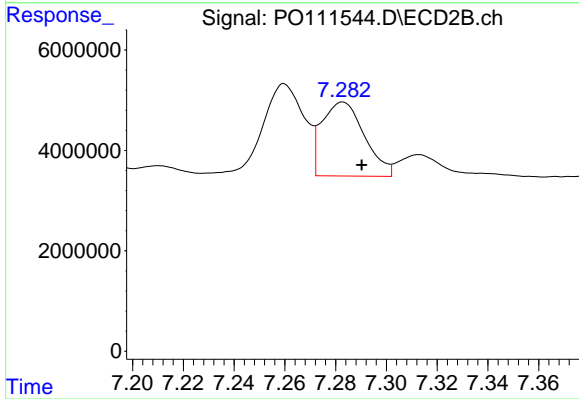
R.T.: 7.042 min  
 Delta R.T.: -0.007 min  
 Response: 7530809  
 Conc: 37.51 ng/ml



#35 AR-1260-5

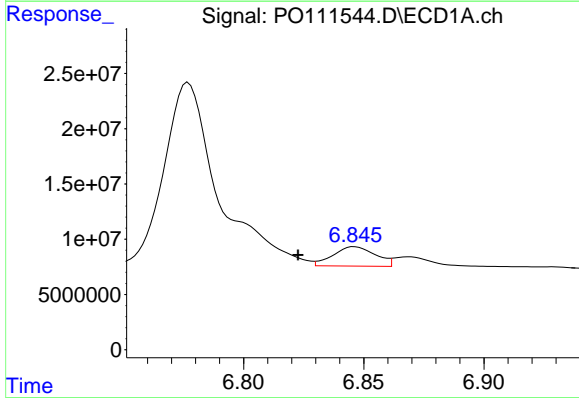
R.T.: 7.318 min  
 Delta R.T.: -0.007 min  
 Response: 31452548  
 Conc: 43.69 ng/ml

Instrument :  
 ECD\_O  
 ClientSampleId :  
 AR1254CCC500



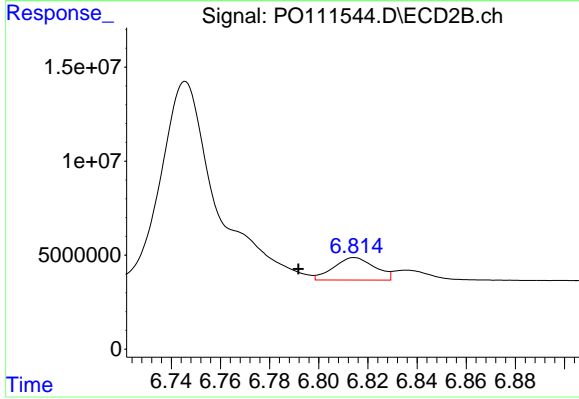
#35 AR-1260-5

R.T.: 7.283 min  
 Delta R.T.: -0.007 min  
 Response: 17195827  
 Conc: 37.41 ng/ml



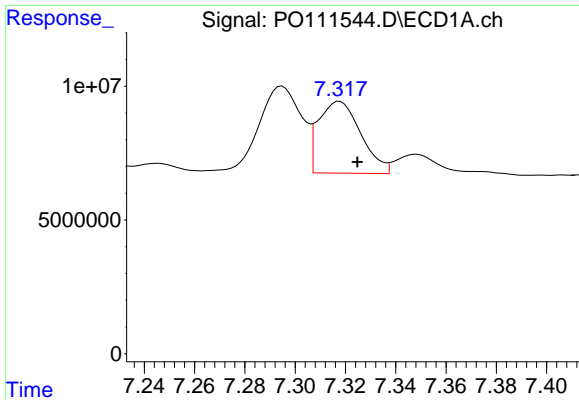
#36 AR-1262-1

R.T.: 6.846 min  
 Delta R.T.: 0.024 min  
 Response: 21436493  
 Conc: 44.05 ng/ml



#36 AR-1262-1

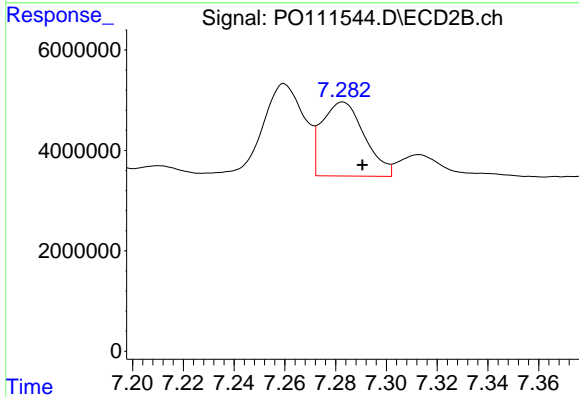
R.T.: 6.815 min  
 Delta R.T.: 0.023 min  
 Response: 13838519  
 Conc: 40.61 ng/ml



#37 AR-1262-2

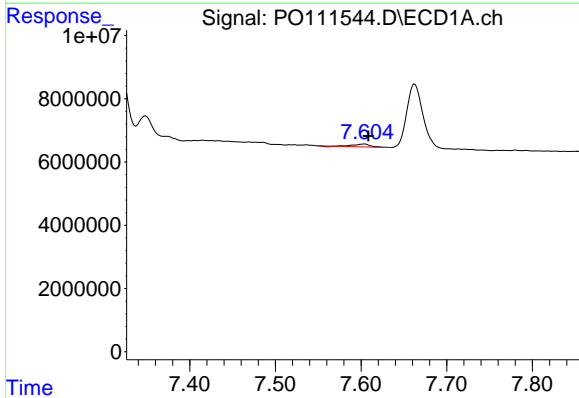
R.T.: 7.318 min  
 Delta R.T.: -0.007 min  
 Response: 31452548  
 Conc: 38.90 ng/ml

Instrument :  
 ECD\_O  
 ClientSampleId :  
 AR1254CCC500



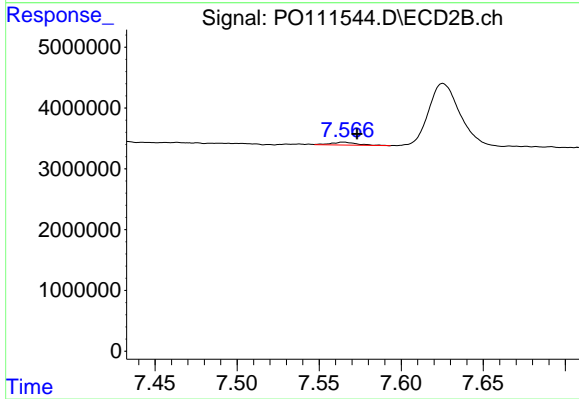
#37 AR-1262-2

R.T.: 7.283 min  
 Delta R.T.: -0.008 min  
 Response: 17195827  
 Conc: 34.20 ng/ml



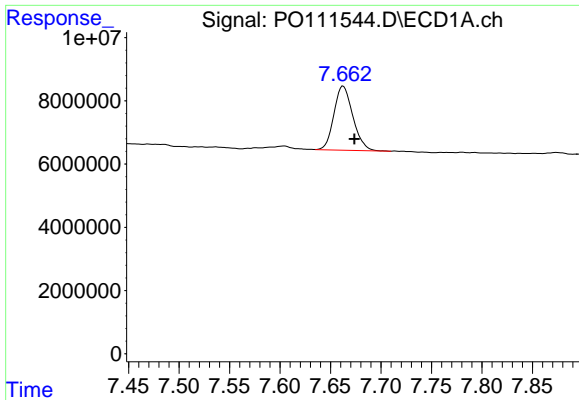
#38 AR-1262-3

R.T.: 7.604 min  
 Delta R.T.: -0.005 min  
 Response: 1144267  
 Conc: 3.38 ng/ml



#38 AR-1262-3

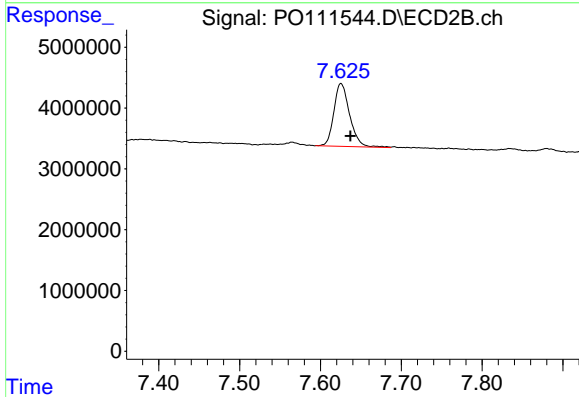
R.T.: 7.565 min  
 Delta R.T.: -0.008 min  
 Response: 509412  
 Conc: 2.71 ng/ml



#39 AR-1262-4

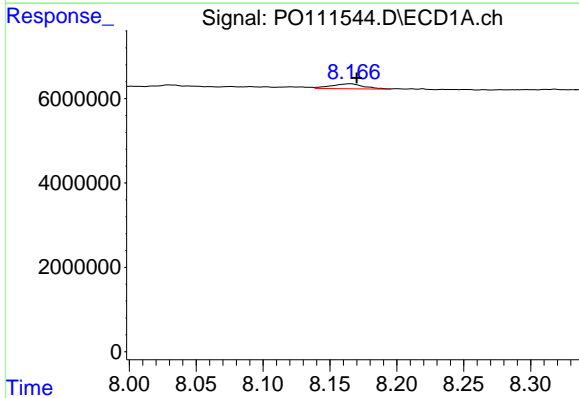
R.T.: 7.663 min  
 Delta R.T.: -0.011 min  
 Response: 26518885  
 Conc: 44.92 ng/ml

Instrument :  
 ECD\_O  
 ClientSampleId :  
 AR1254CCC500



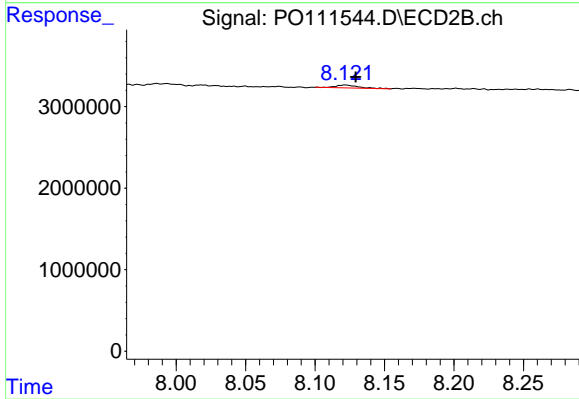
#39 AR-1262-4

R.T.: 7.625 min  
 Delta R.T.: -0.012 min  
 Response: 14074777  
 Conc: 42.62 ng/ml



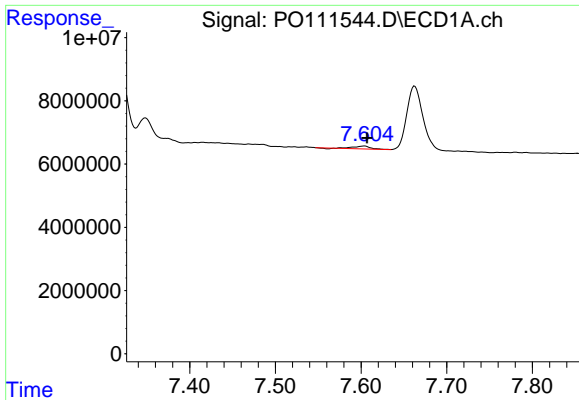
#40 AR-1262-5

R.T.: 8.165 min  
 Delta R.T.: -0.005 min  
 Response: 2028099  
 Conc: 7.11 ng/ml



#40 AR-1262-5

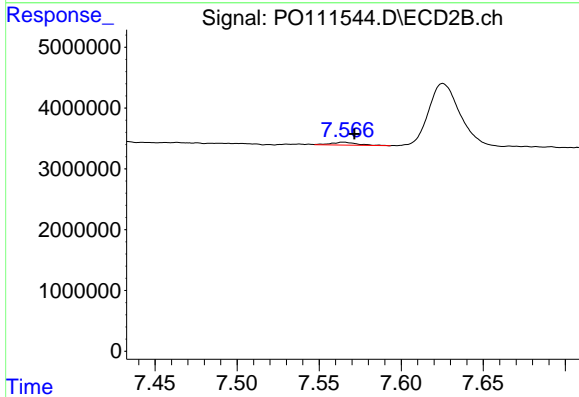
R.T.: 8.122 min  
 Delta R.T.: -0.007 min  
 Response: 392630  
 Conc: 3.50 ng/ml



#41 AR-1268-1

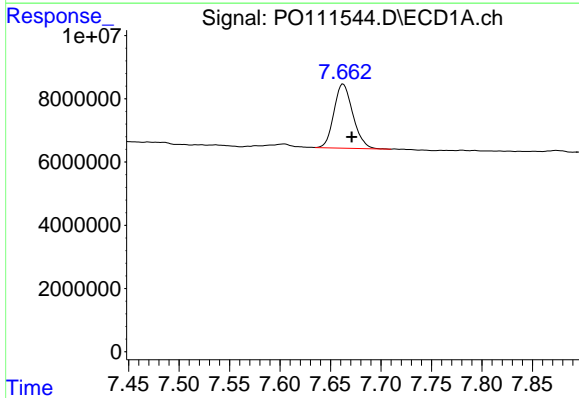
R.T.: 7.604 min  
 Delta R.T.: -0.003 min  
 Response: 1144267  
 Conc: 1.18 ng/ml

Instrument :  
 ECD\_O  
 ClientSampleId :  
 AR1254CCC500



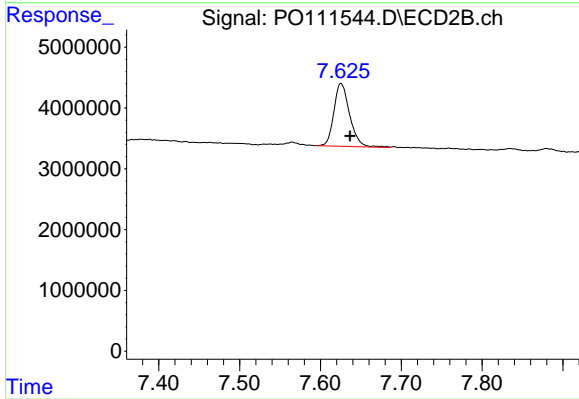
#41 AR-1268-1

R.T.: 7.565 min  
 Delta R.T.: -0.007 min  
 Response: 509412  
 Conc: 0.96 ng/ml



#42 AR-1268-2

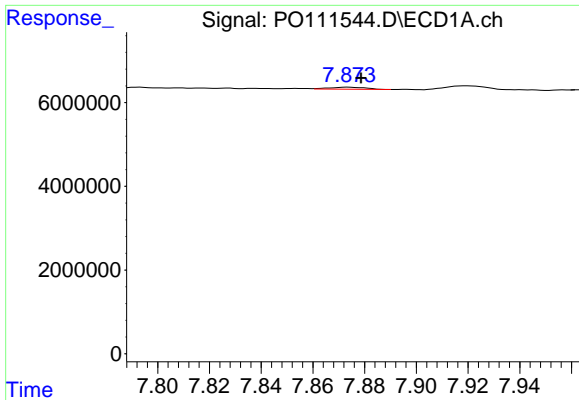
R.T.: 7.663 min  
 Delta R.T.: -0.008 min  
 Response: 26518885  
 Conc: 29.71 ng/ml



#42 AR-1268-2

R.T.: 7.625 min  
 Delta R.T.: -0.011 min  
 Response: 14074777  
 Conc: 29.18 ng/ml

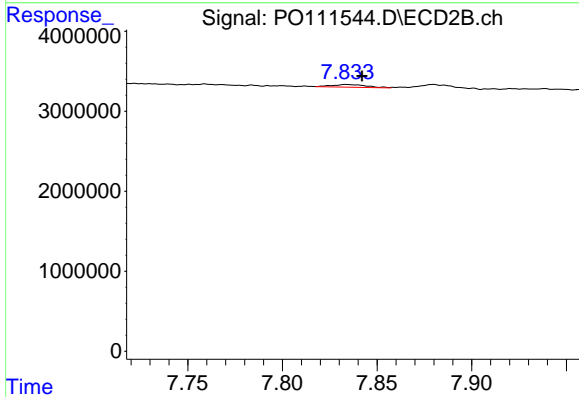




#43 AR-1268-3

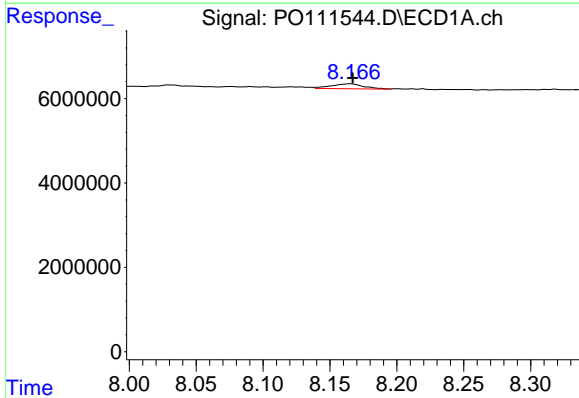
R.T.: 7.874 min  
 Delta R.T.: -0.005 min  
 Response: 492612  
 Conc: 0.65 ng/ml

Instrument :  
 ECD\_O  
 ClientSampleId :  
 AR1254CCC500



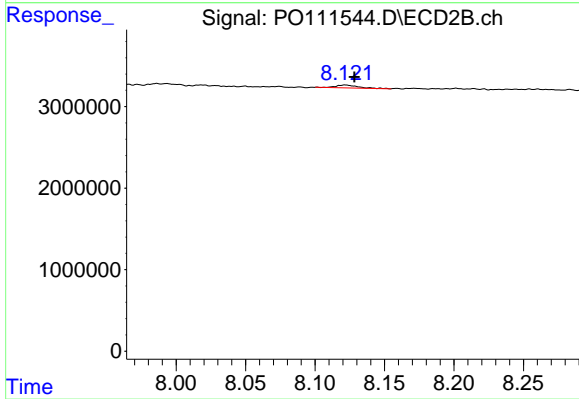
#43 AR-1268-3

R.T.: 7.834 min  
 Delta R.T.: -0.008 min  
 Response: 406070  
 Conc: 1.17 ng/ml



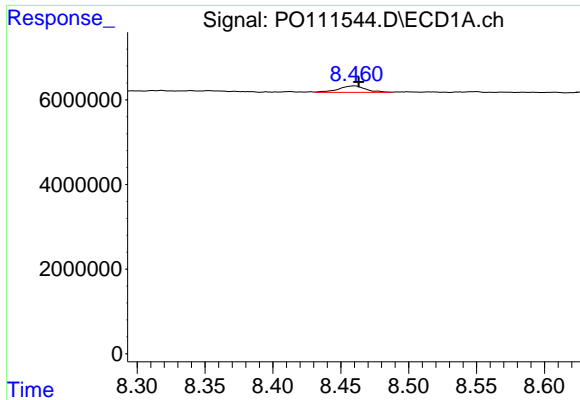
#44 AR-1268-4

R.T.: 8.165 min  
 Delta R.T.: -0.002 min  
 Response: 2028099  
 Conc: 6.21 ng/ml



#44 AR-1268-4

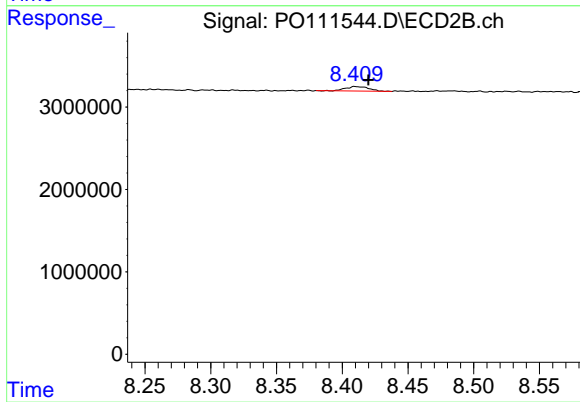
R.T.: 8.122 min  
 Delta R.T.: -0.006 min  
 Response: 392630  
 Conc: 3.09 ng/ml



#45 AR-1268-5

R.T.: 8.460 min  
 Delta R.T.: -0.003 min  
 Response: 2148415  
 Conc: 1.00 ng/ml

Instrument :  
 ECD\_O  
 ClientSampleId :  
 AR1254CCC500



#45 AR-1268-5

R.T.: 8.410 min  
 Delta R.T.: -0.010 min  
 Response: 668304  
 Conc: 0.89 ng/ml