

Data Path : Z:\pestpcbsrv\HPCHEM1\ECD_0\Data\P0061121\
 Data File : P0078659.D
 Signal(s) : Signal #1: ECD1A.CH Signal #2: ECD2B.CH
 Acq On : 11 Jun 2021 13:31
 Operator : DD\AJ
 Sample : M2645-03
 Misc :
 ALS Vial : 14 Sample Multiplier: 1

Instrument :
 ECD_0
ClientSampled :
 BUR-1041

Manual Integrations
APPROVED
 Ankita
 6/14/2021 2:29:48 PM

Integration File signal 1: autoint1.e
 Integration File signal 2: autoint2.e
 Quant Time: Jun 11 14:13:35 2021
 Quant Method : Z:\pestpcbsrv\HPCHEM1\ECD_0\methods\P0060721.M
 Quant Title : GC EXTRACTABLES
 QLast Update : Tue Jun 08 05:39:51 2021
 Response via : Initial Calibration
 Integrator: ChemStation 6890 Scale Mode: Small noise peaks clipped

Volume Inj. : 2 µl
 Signal #1 Phase : ZB-MR1 Signal #2 Phase: ZB-MR2
 Signal #1 Info : 30Mx0.32mmx 0.50µ Signal #2 Info : 30M x 0.32mm x 0.25µm

Compound	RT#1	RT#2	Resp#1	Resp#2	ng/ml	ng/ml

System Monitoring Compounds						
1) SA Tetrachlo...	4.335	3.612	682558	320776	8.936m	10.153m
2) SA Decachlor...	9.944	8.795	331440	217940	8.174	9.064

Target Compounds

 (f)=RT Delta > 1/2 Window (#)=Amounts differ by > 25% (m)=manual int.

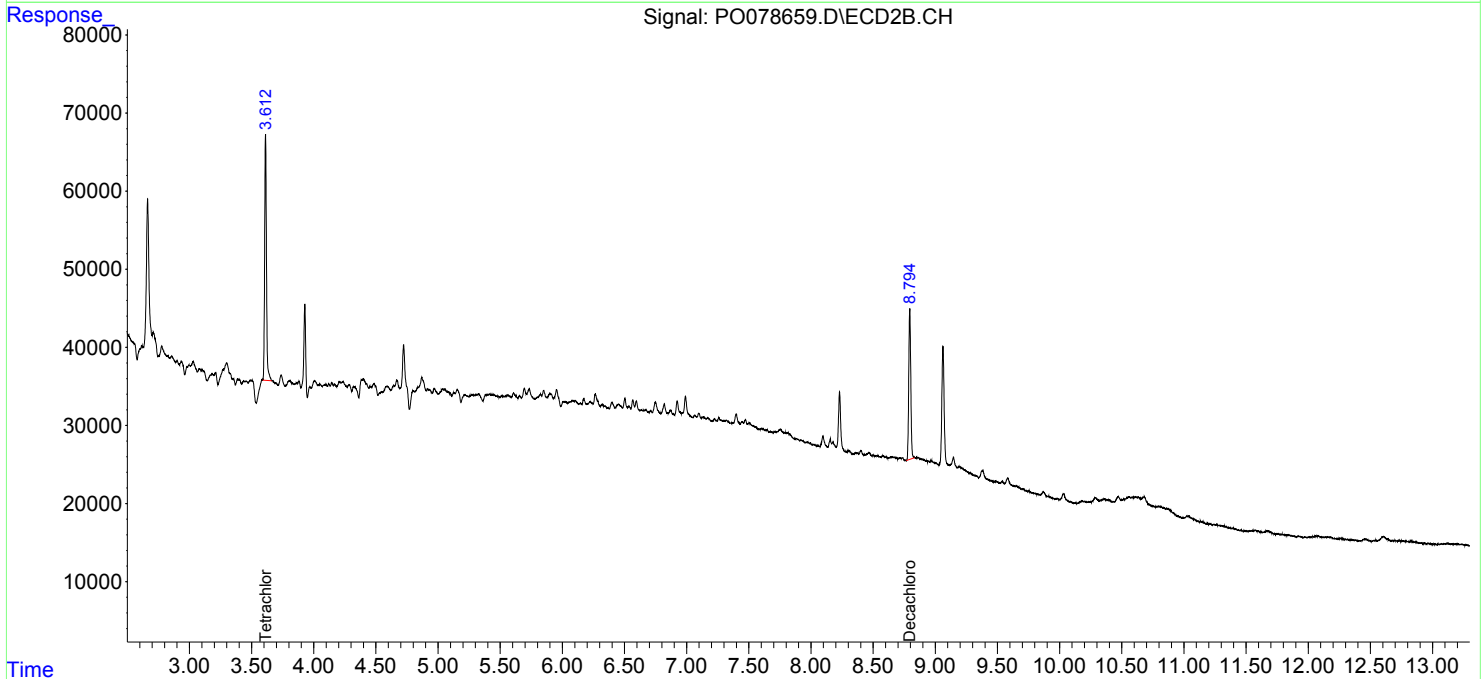
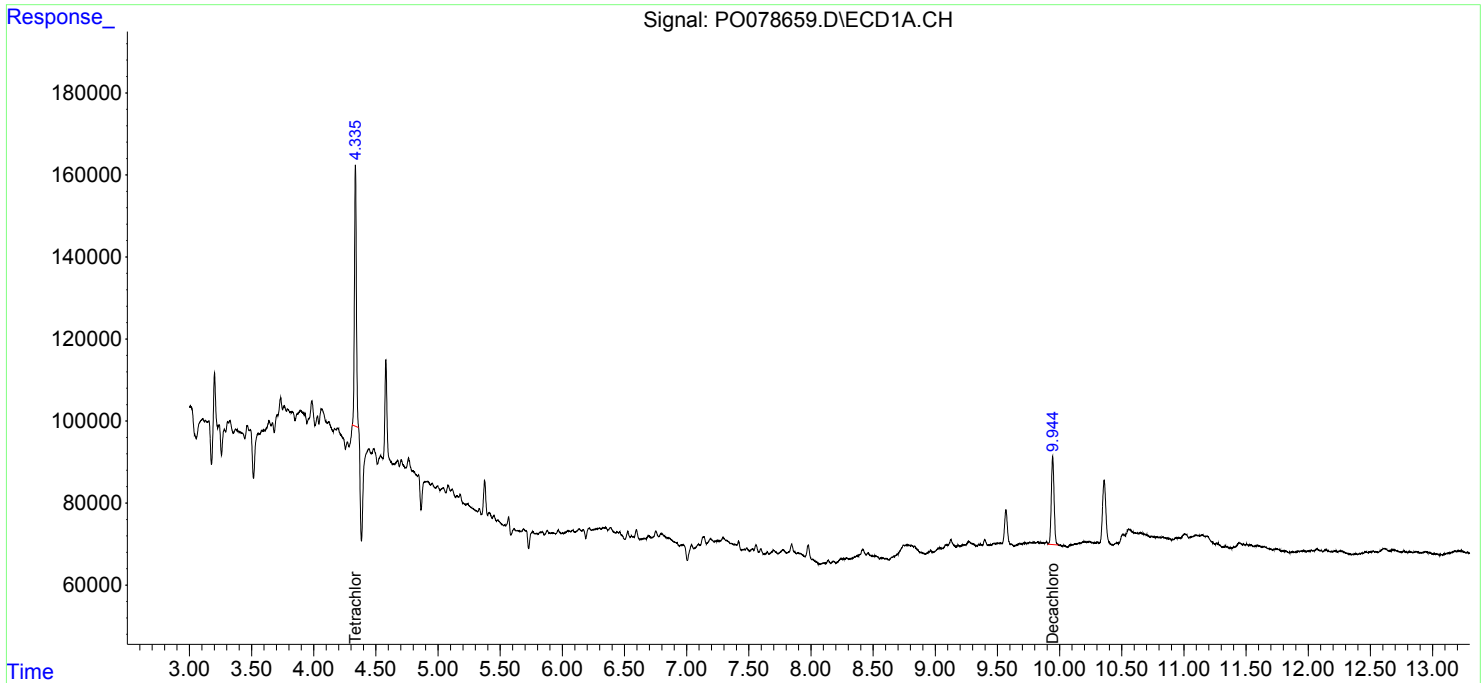
Data Path : Z:\pestpcbsrv\HPCHEM1\ECD_0\Data\P0061121\
 Data File : P0078659.D
 Signal(s) : Signal #1: ECD1A.CH Signal #2: ECD2B.CH
 Acq On : 11 Jun 2021 13:31
 Operator : DD\AJ
 Sample : M2645-03
 Misc :
 ALS Vial : 14 Sample Multiplier: 1

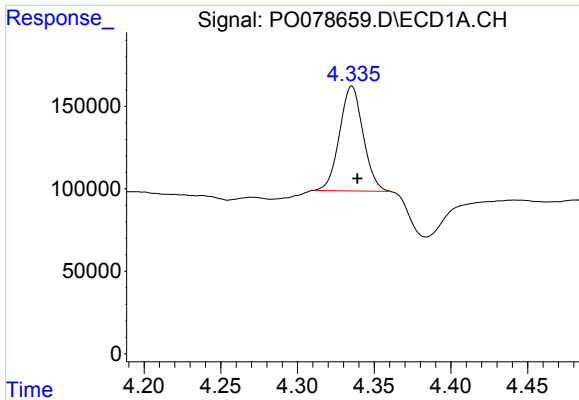
Instrument :
 ECD_O
ClientSampled :
 BUR-1041

Manual Integrations
APPROVED
 Ankita
 6/14/2021 2:29:48 PM

Integration File signal 1: autoint1.e
 Integration File signal 2: autoint2.e
 Quant Time: Jun 11 14:13:35 2021
 Quant Method : Z:\pestpcbsrv\HPCHEM1\ECD_0\methods\P0060721.M
 Quant Title : GC EXTRACTABLES
 QLast Update : Tue Jun 08 05:39:51 2021
 Response via : Initial Calibration
 Integrator: ChemStation 6890 Scale Mode: Small noise peaks clipped

Volume Inj. : 2 µl
 Signal #1 Phase : ZB-MR1 Signal #2 Phase: ZB-MR2
 Signal #1 Info : 30Mx0.32mmx 0.50µ Signal #2 Info : 30M x 0.32mm x 0.25µm

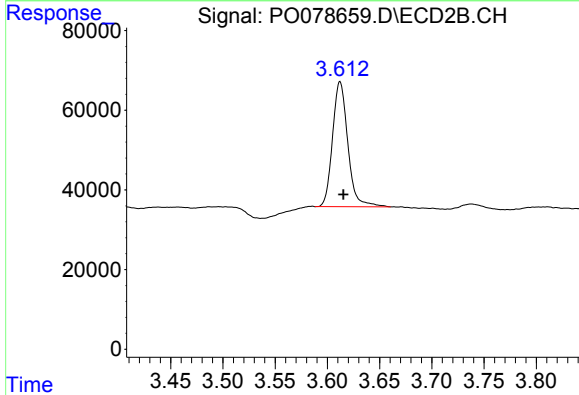




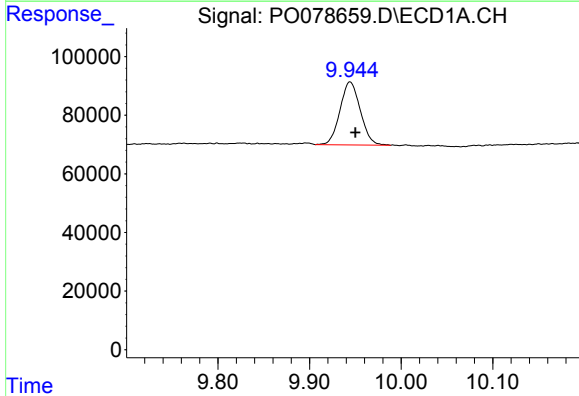
#1 Tetrachloro-m-xylene
 R.T.: 4.335 min
 Delta R.T.: -0.004 min
 Response: 682558
 Conc: 8.94 ng/ml m

Instrument :
 ECD_O
 ClientSampled :
 BUR-1041

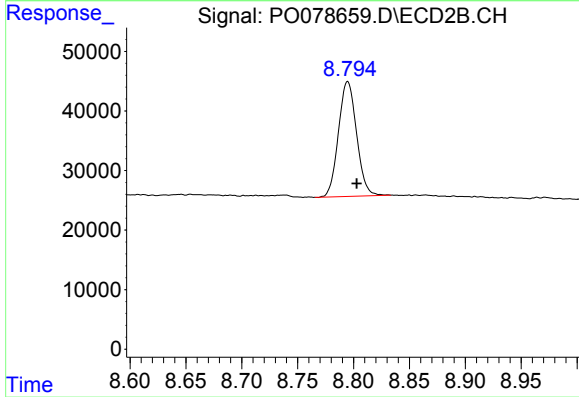
Manual Integrations
 APPROVED
 Ankita
 6/14/2021 2:29:48 PM



#1 Tetrachloro-m-xylene
 R.T.: 3.612 min
 Delta R.T.: -0.003 min
 Response: 320776
 Conc: 10.15 ng/ml m



#2 Decachlorobiphenyl
 R.T.: 9.944 min
 Delta R.T.: -0.006 min
 Response: 331440
 Conc: 8.17 ng/ml



#2 Decachlorobiphenyl
 R.T.: 8.795 min
 Delta R.T.: -0.008 min
 Response: 217940
 Conc: 9.06 ng/ml