

Data Path : Z:\pestpcbsrv\HPCHEM1\ECD_0\Data\P0061125\
 Data File : P0111611.D
 Signal(s) : Signal #1: ECD1A.ch Signal #2: ECD2B.ch
 Acq On : 11 Jun 2025 18:13
 Operator : YP/AJ
 Sample : AR1268ICC750
 Misc :
 ALS Vial : 27 Sample Multiplier: 1

Instrument :
 ECD_0
 ClientSampleId :
 AR1268ICC750

Integration File signal 1: autoint1.e
 Integration File signal 2: autoint2.e
 Quant Time: Jun 12 06:02:19 2025
 Quant Method : Z:\pestpcbsrv\HPCHEM1\ECD_0\methods\P0061125.M
 Quant Title : GC EXTRACTABLES
 QLast Update : Thu Jun 12 05:57:06 2025
 Response via : Initial Calibration
 Integrator: ChemStation

Volume Inj. : 2 µl
 Signal #1 Phase : ZB-MR1 Signal #2 Phase: ZB-MR2
 Signal #1 Info : 30Mx0.32mmx 0.50µ Signal #2 Info : 30M x 0.32mm x 0.25µm

Compound	RT#1	RT#2	Resp#1	Resp#2	ng/ml	ng/ml

System Monitoring Compounds						
1) SA Tetrachlo...	3.678	3.674	455.9E6	422.3E6	72.724	74.142
2) SA Decachlor...	8.714	8.662	675.4E6	224.8E6	72.317	72.615
Target Compounds						
41) L9 AR-1268-1	7.601	7.564	793.7E6	333.1E6	723.633	727.520
42) L9 AR-1268-2	7.665	7.629	689.0E6	292.9E6	722.004	732.523
43) L9 AR-1268-3	7.872	7.834	582.6E6	221.2E6	728.087	726.286
44) L9 AR-1268-4	8.160	8.120	245.1E6	81834207	710.765	725.030
45) L9 AR-1268-5	8.456	8.411	1601.8E6	521.1E6	732.335	737.736

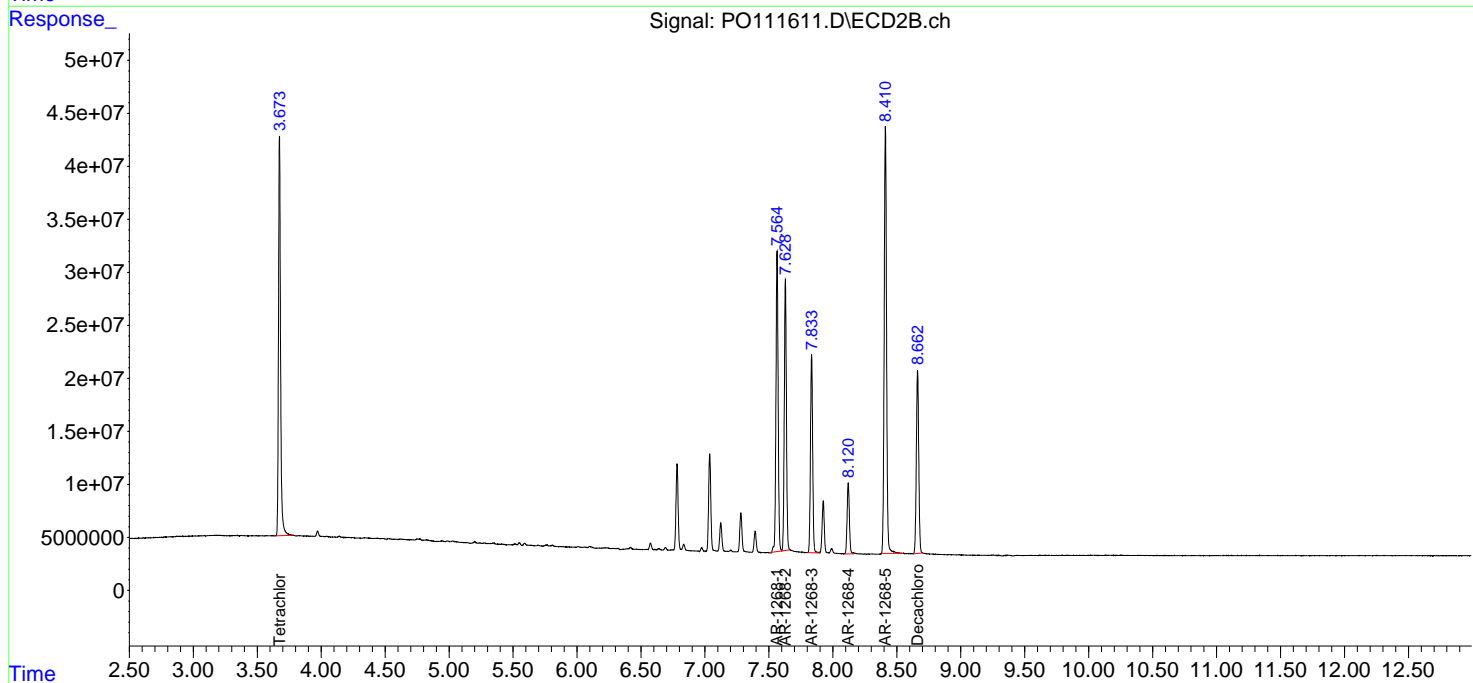
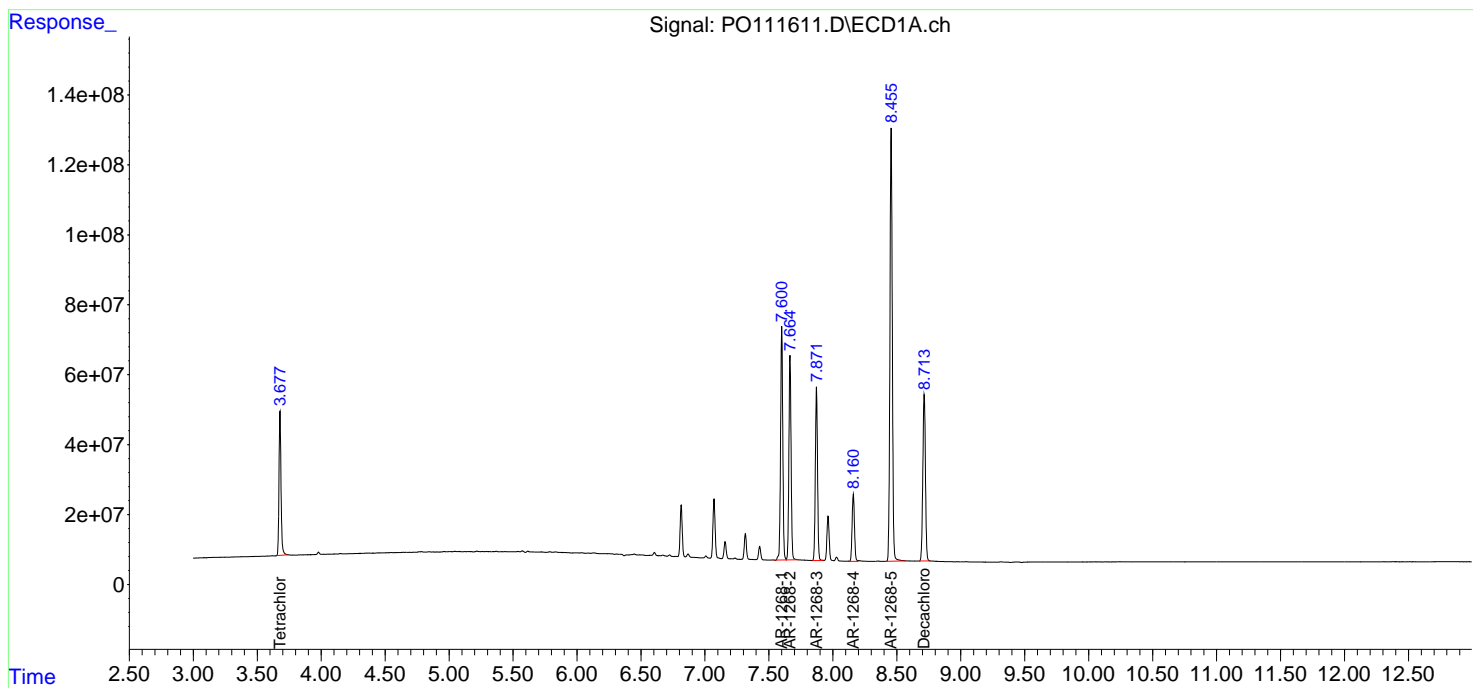
(f)=RT Delta > 1/2 Window (#)=Amounts differ by > 25% (m)=manual int.

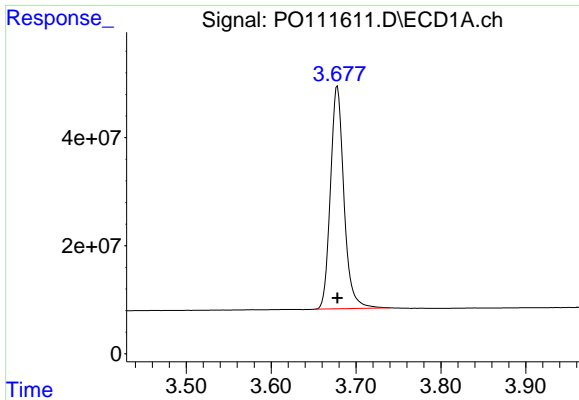
Data Path : Z:\pestpcbsrv\HPCHEM1\ECD_0\Data\P0061125\
 Data File : P0111611.D
 Signal(s) : Signal #1: ECD1A.ch Signal #2: ECD2B.ch
 Acq On : 11 Jun 2025 18:13
 Operator : YP/AJ
 Sample : AR1268ICC750
 Misc :
 ALS Vial : 27 Sample Multiplier: 1

Instrument :
 ECD_0
 ClientSampleId :
 AR1268ICC750

Integration File signal 1: autoint1.e
 Integration File signal 2: autoint2.e
 Quant Time: Jun 12 06:02:19 2025
 Quant Method : Z:\pestpcbsrv\HPCHEM1\ECD_0\methods\P0061125.M
 Quant Title : GC EXTRACTABLES
 QLast Update : Thu Jun 12 05:57:06 2025
 Response via : Initial Calibration
 Integrator: ChemStation

Volume Inj. : 2 µl
 Signal #1 Phase : ZB-MR1 Signal #2 Phase: ZB-MR2
 Signal #1 Info : 30Mx0.32mmx 0.50µ Signal #2 Info : 30M x 0.32mm x 0.25µm

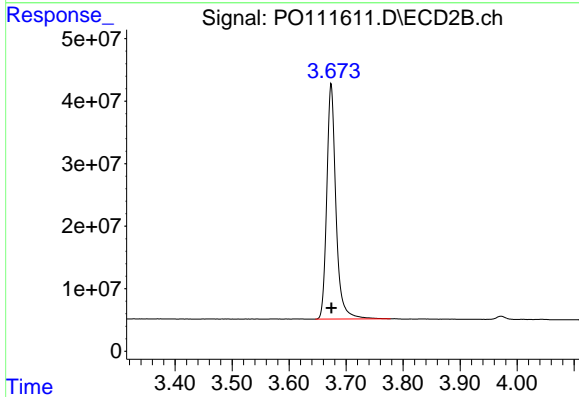




#1 Tetrachloro-m-xylene

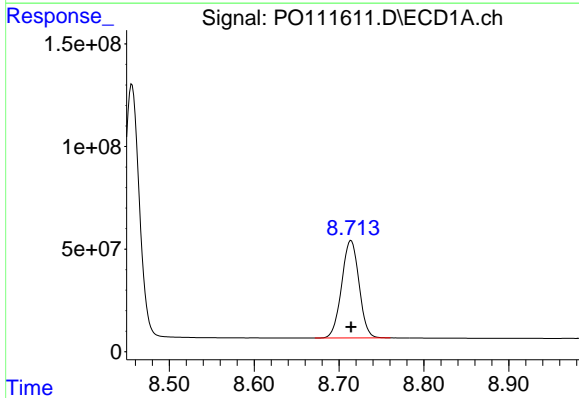
R.T.: 3.678 min
 Delta R.T.: 0.000 min
 Response: 455936811
 Conc: 72.72 ng/ml

Instrument :
 ECD_O
 ClientSampleId :
 AR1268ICC750



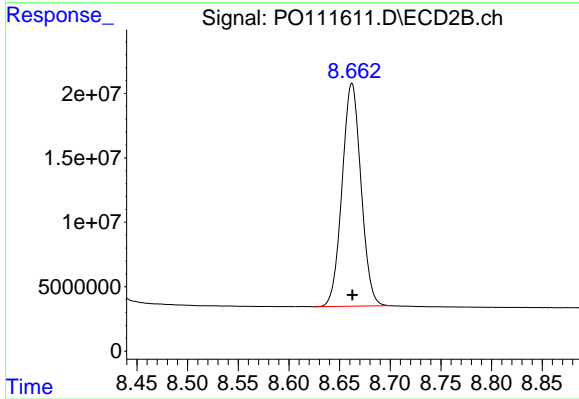
#1 Tetrachloro-m-xylene

R.T.: 3.674 min
 Delta R.T.: 0.000 min
 Response: 422349005
 Conc: 74.14 ng/ml



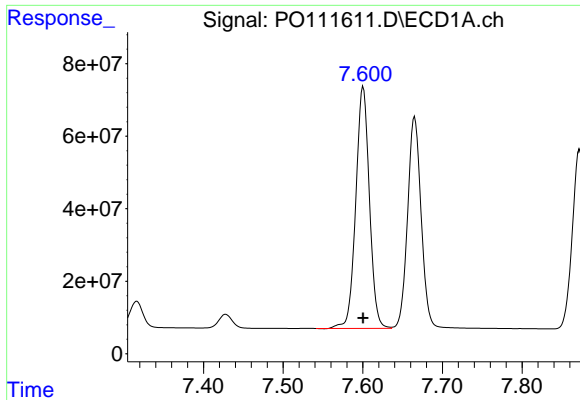
#2 Decachlorobiphenyl

R.T.: 8.714 min
 Delta R.T.: 0.000 min
 Response: 675409183
 Conc: 72.32 ng/ml



#2 Decachlorobiphenyl

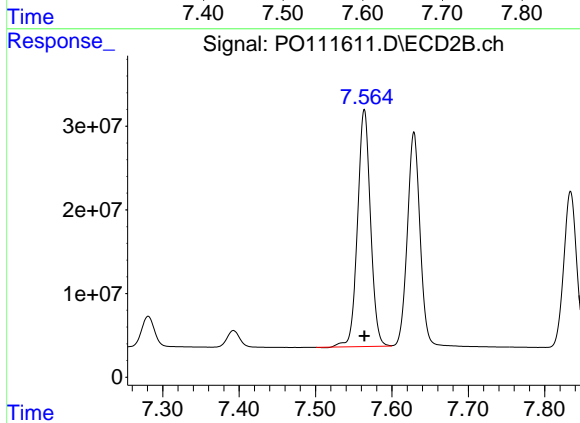
R.T.: 8.662 min
 Delta R.T.: 0.000 min
 Response: 224841206
 Conc: 72.62 ng/ml



#41 AR-1268-1

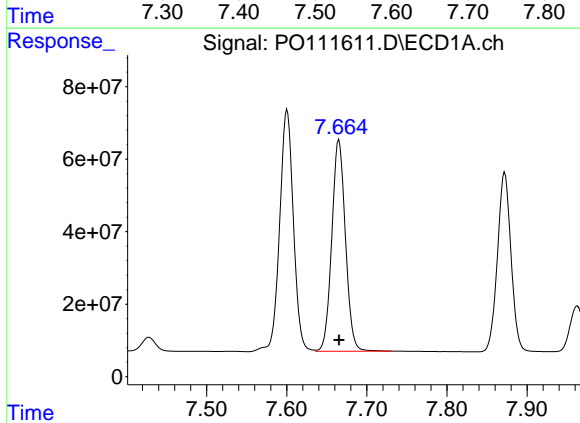
R.T.: 7.601 min
 Delta R.T.: 0.000 min
 Response: 793714745
 Conc: 723.63 ng/ml

Instrument :
 ECD_O
 ClientSampleId :
 AR1268ICC750



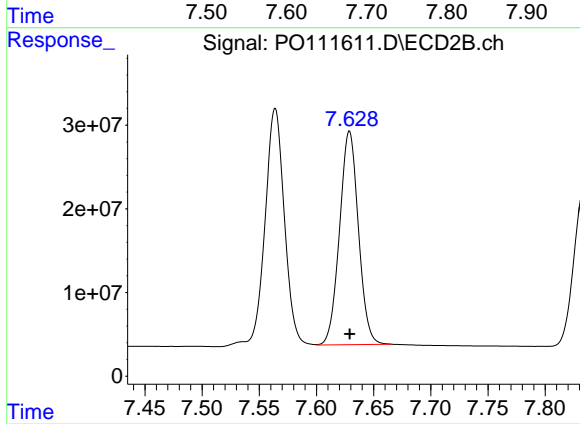
#41 AR-1268-1

R.T.: 7.564 min
 Delta R.T.: 0.000 min
 Response: 333139813
 Conc: 727.52 ng/ml



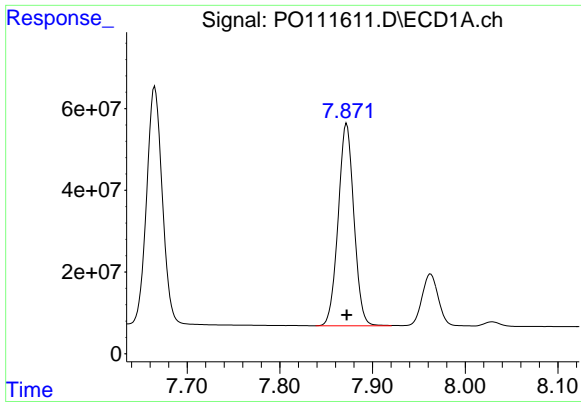
#42 AR-1268-2

R.T.: 7.665 min
 Delta R.T.: 0.000 min
 Response: 689015789
 Conc: 722.00 ng/ml



#42 AR-1268-2

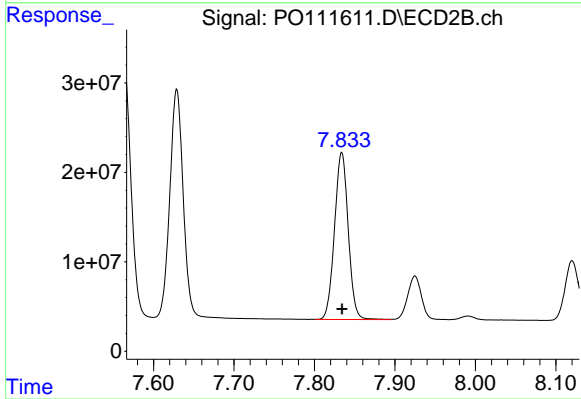
R.T.: 7.629 min
 Delta R.T.: 0.000 min
 Response: 292939572
 Conc: 732.52 ng/ml



#43 AR-1268-3

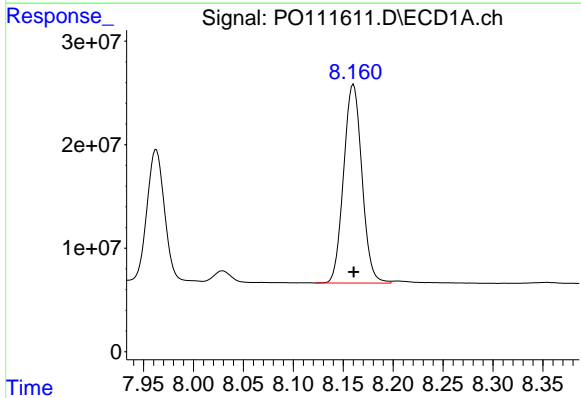
R.T.: 7.872 min
 Delta R.T.: 0.000 min
 Response: 582646041
 Conc: 728.09 ng/ml

Instrument :
 ECD_O
 ClientSampleId :
 AR1268ICC750



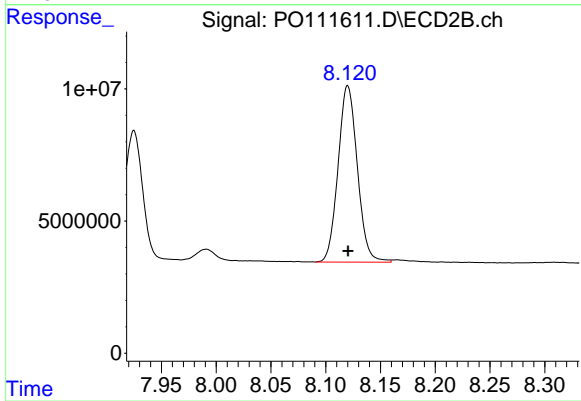
#43 AR-1268-3

R.T.: 7.834 min
 Delta R.T.: 0.000 min
 Response: 221172827
 Conc: 726.29 ng/ml



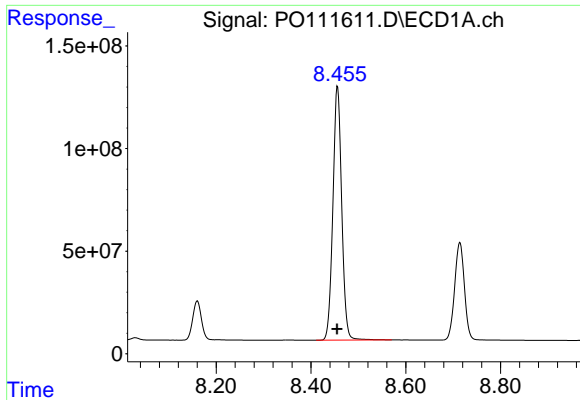
#44 AR-1268-4

R.T.: 8.160 min
 Delta R.T.: 0.000 min
 Response: 245054645
 Conc: 710.77 ng/ml



#44 AR-1268-4

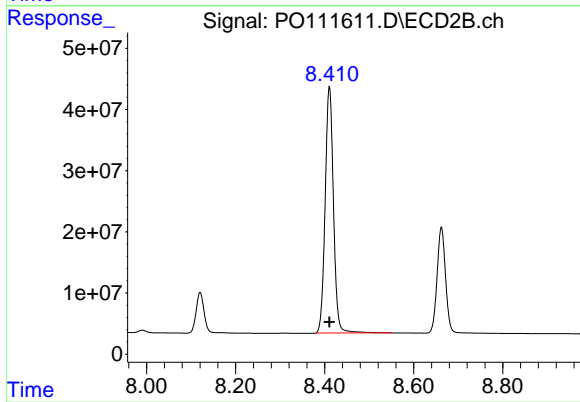
R.T.: 8.120 min
 Delta R.T.: 0.000 min
 Response: 81834207
 Conc: 725.03 ng/ml



#45 AR-1268-5

R.T.: 8.456 min
Delta R.T.: 0.001 min
Response: 1601796860
Conc: 732.34 ng/ml

Instrument :
ECD_O
ClientSampleId :
AR1268ICC750



#45 AR-1268-5

R.T.: 8.411 min
Delta R.T.: 0.000 min
Response: 521144183
Conc: 737.74 ng/ml