

Data Path : Z:\pestpcbsrv\HPCHEM1\ECD_0\Data\P0061125\
 Data File : P0111591.D
 Signal(s) : Signal #1: ECD1A.ch Signal #2: ECD2B.ch
 Acq On : 11 Jun 2025 11:53
 Operator : YP/AJ
 Sample : AR1660ICC050
 Misc :
 ALS Vial : 7 Sample Multiplier: 1

Instrument :
 ECD_0
ClientSampleId :
 AR1660ICC050

Manual Integrations
APPROVED

Reviewed By :Yogesh Patel 06/12/2025
 Supervised By :mohammad ahmed 06/13/2025

Integration File signal 1: autoint1.e
 Integration File signal 2: autoint2.e
 Quant Time: Jun 11 12:07:16 2025
 Quant Method : Z:\pestpcbsrv\HPCHEM1\ECD_0\methods\P0061125.M
 Quant Title : GC EXTRACTABLES
 QLast Update : Wed Jun 11 12:07:04 2025
 Response via : Initial Calibration
 Integrator: ChemStation

Volume Inj. : 2 µl
 Signal #1 Phase : ZB-MR1 Signal #2 Phase: ZB-MR2
 Signal #1 Info : 30Mx0.32mmx 0.50µ Signal #2 Info : 30M x 0.32mm x 0.25µm

Compound	RT#1	RT#2	Resp#1	Resp#2	ng/ml	ng/ml

System Monitoring Compounds						
1) SA Tetrachlo...	3.678	3.673	27660981	26053048	4.803	4.638
2) SA Decachlor...	8.712	8.662	26704107	8941855	5.087	5.030
Target Compounds						
3) L1 AR-1016-1	4.765	4.750	12102371	10641184	51.662m	54.080
4) L1 AR-1016-2	4.784	4.769	15230034	14685829	45.601m	51.551
5) L1 AR-1016-3	4.841	4.944	10294489	7595210	43.965m	50.554
6) L1 AR-1016-4	4.961	4.987	8679050	6294307	46.206m	51.683
7) L1 AR-1016-5	5.218	5.199	8531210	8768797	45.620m	55.081
31) L7 AR-1260-1	6.256	6.229	16630454	13039756	46.467m	51.748m
32) L7 AR-1260-2	6.446	6.416	24715396	15670158	52.210m	53.392m
33) L7 AR-1260-3	6.813	6.569	22383586	14269100	52.708	53.406
34) L7 AR-1260-4	7.072	7.039	17363789	10374184	55.220	54.573
35) L7 AR-1260-5	7.316	7.280	41341782	22505628	50.189	52.952

(f)=RT Delta > 1/2 Window (#)=Amounts differ by > 25% (m)=manual int.

Data Path : Z:\pestpcbsrv\HPCHEM1\ECD_O\Data\PO061125\
 Data File : PO111591.D
 Signal(s) : Signal #1: ECD1A.ch Signal #2: ECD2B.ch
 Acq On : 11 Jun 2025 11:53
 Operator : YP/AJ
 Sample : AR1660ICC050
 Misc :
 ALS Vial : 7 Sample Multiplier: 1

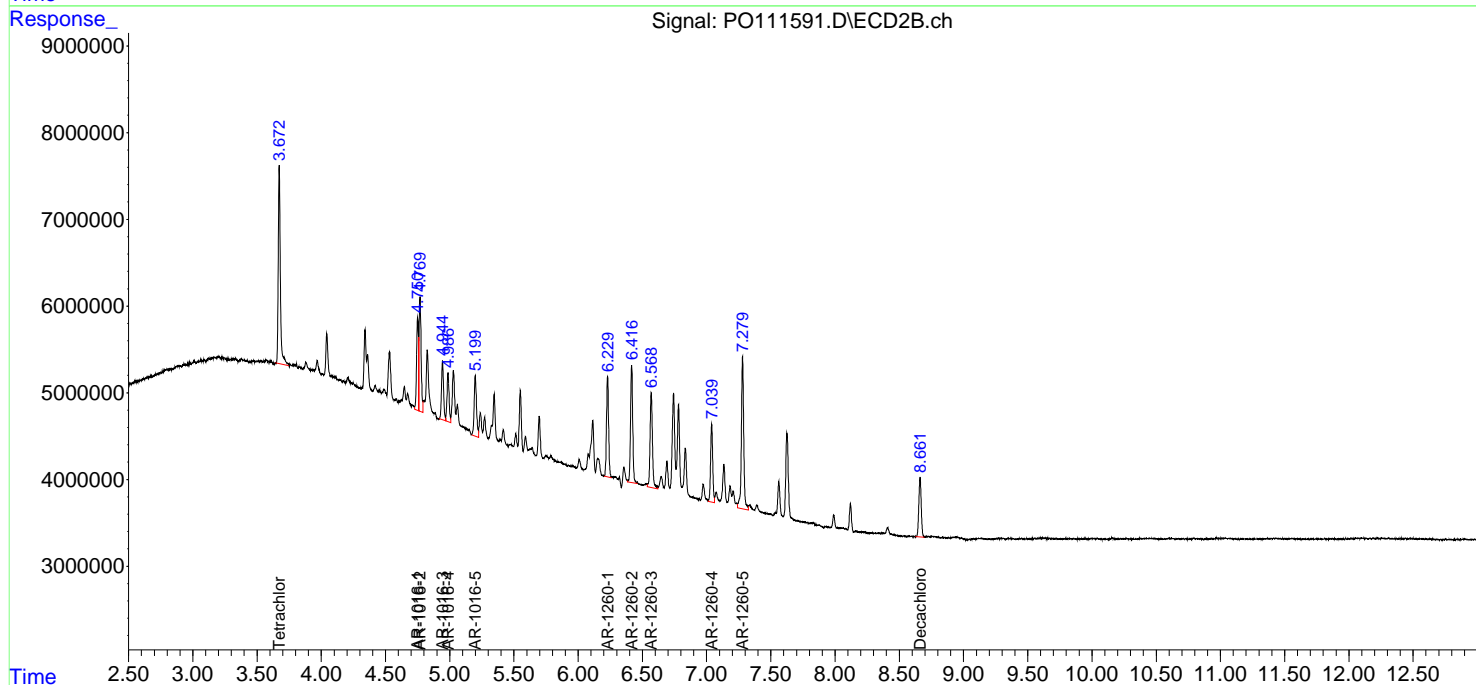
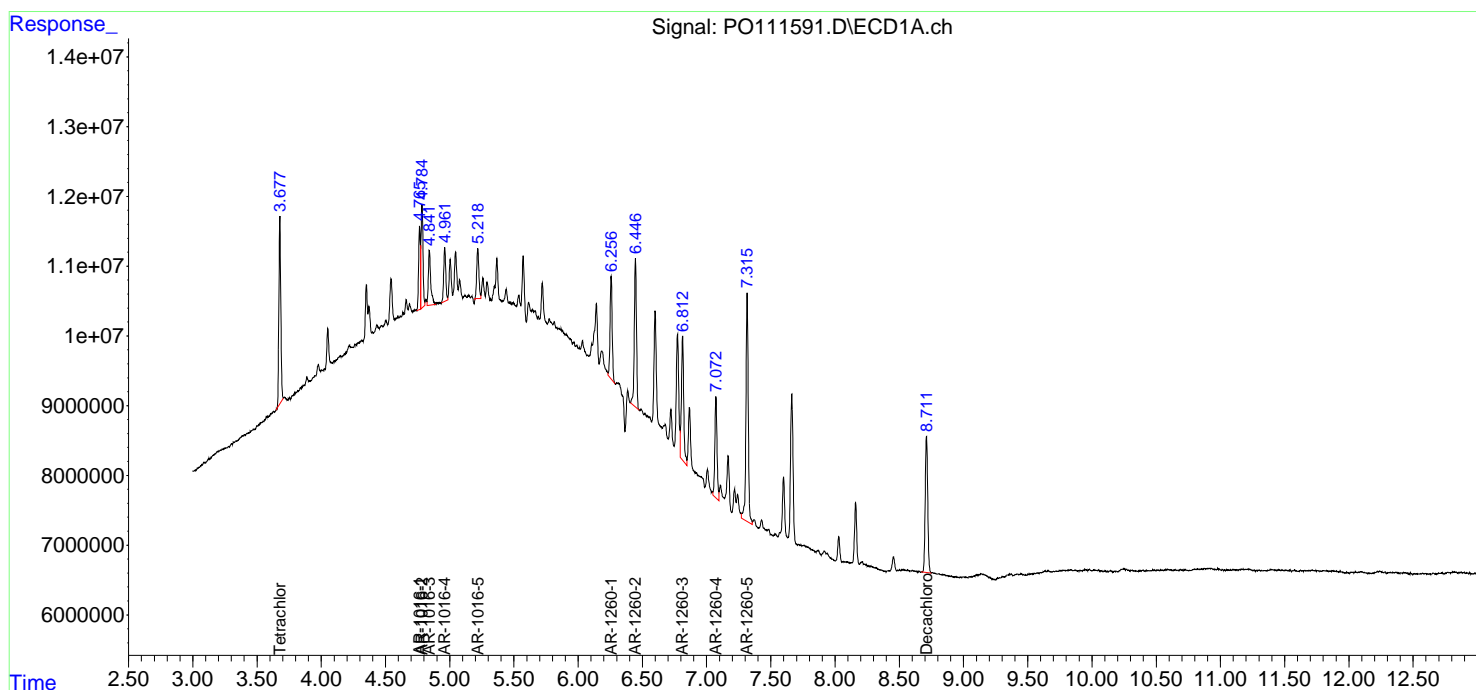
Instrument :
 ECD_O
 ClientSampleId :
 AR1660ICC050

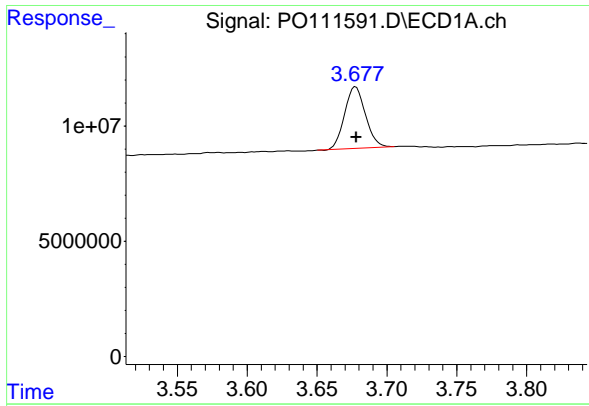
Manual Integrations
 APPROVED

Reviewed By :Yogesh Patel 06/12/2025
 Supervised By :mohammad ahmed 06/13/2025

Integration File signal 1: autoint1.e
 Integration File signal 2: autoint2.e
 Quant Time: Jun 11 12:07:16 2025
 Quant Method : Z:\pestpcbsrv\HPCHEM1\ECD_O\methods\PO061125.M
 Quant Title : GC EXTRACTABLES
 QLast Update : Wed Jun 11 12:07:04 2025
 Response via : Initial Calibration
 Integrator: ChemStation

Volume Inj. : 2 µl
 Signal #1 Phase : ZB-MR1 Signal #2 Phase: ZB-MR2
 Signal #1 Info : 30Mx0.32mmx 0.50µm Signal #2 Info : 30M x 0.32mm x 0.25µm





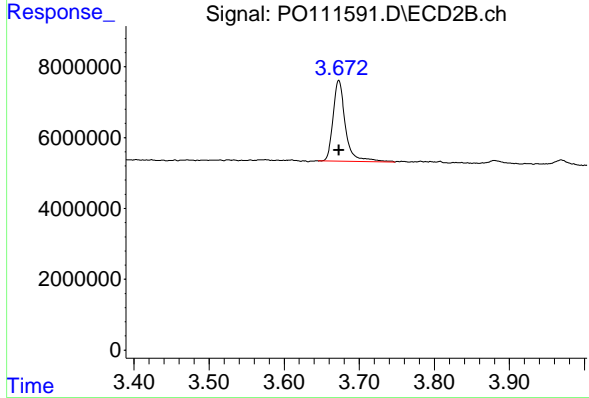
#1 Tetrachloro-m-xylene

R.T.: 3.678 min
 Delta R.T.: 0.000 min
 Response: 27660981
 Conc: 4.80 ng/ml

Instrument : ECD_O
 ClientSampleId : AR1660ICC050

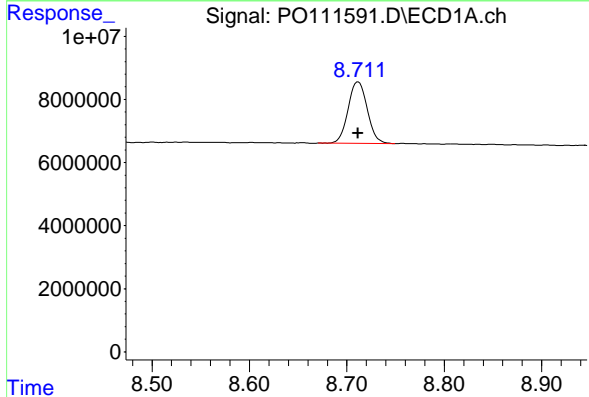
Manual Integrations
 APPROVED

Reviewed By :Yogesh Patel 06/12/2025
 Supervised By :mohammad ahmed 06/13/2025



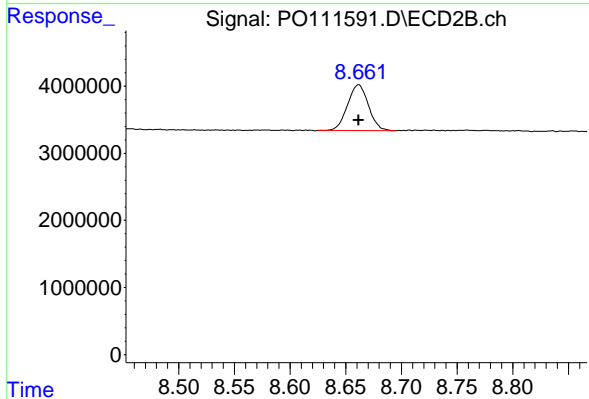
#1 Tetrachloro-m-xylene

R.T.: 3.673 min
 Delta R.T.: 0.000 min
 Response: 26053048
 Conc: 4.64 ng/ml



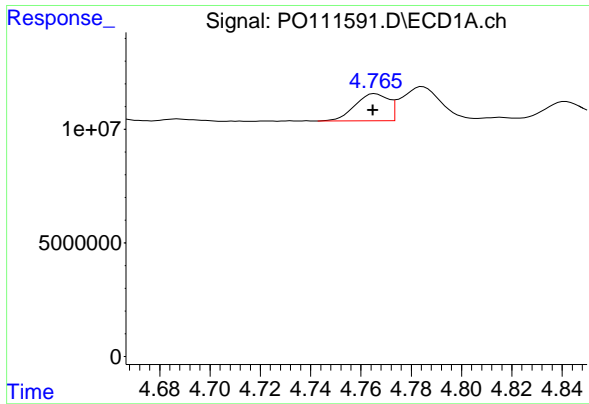
#2 Decachlorobiphenyl

R.T.: 8.712 min
 Delta R.T.: 0.000 min
 Response: 26704107
 Conc: 5.09 ng/ml



#2 Decachlorobiphenyl

R.T.: 8.662 min
 Delta R.T.: 0.000 min
 Response: 8941855
 Conc: 5.03 ng/ml



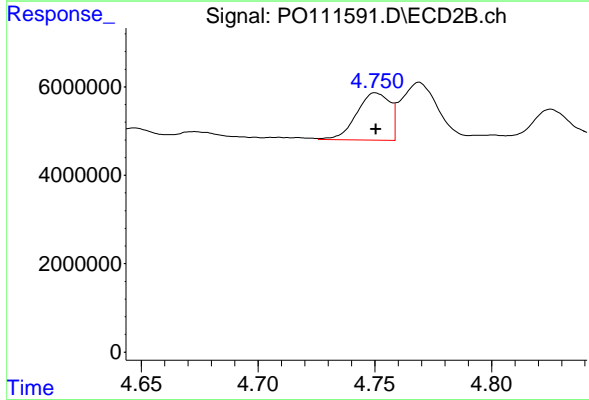
#3 AR-1016-1

R.T.: 4.765 min
 Delta R.T.: 0.000 min
 Response: 12102371
 Conc: 51.66 ng/ml

Instrument :
 ECD_O
 ClientSampleId :
 AR1660ICC050

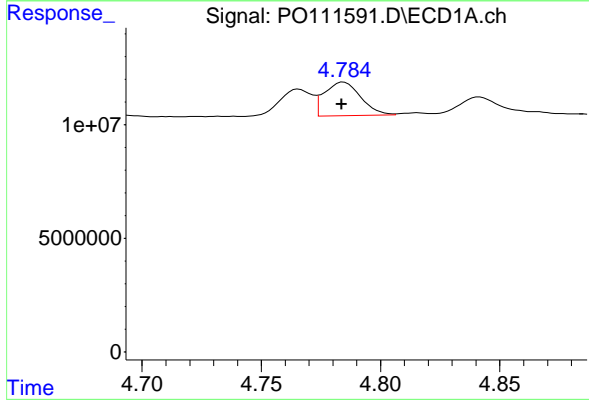
Manual Integrations
 APPROVED

Reviewed By :Yogesh Patel 06/12/2025
 Supervised By :mohammad ahmed 06/13/2025



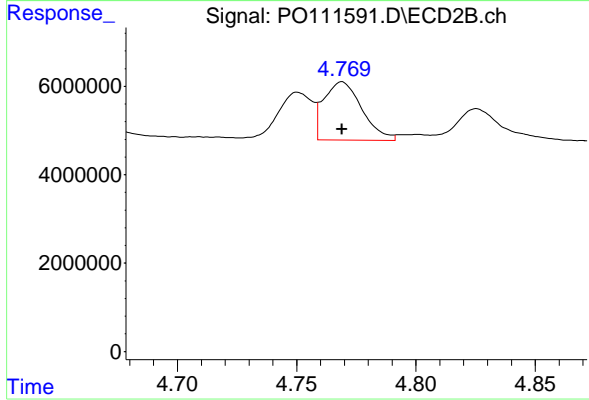
#3 AR-1016-1

R.T.: 4.750 min
 Delta R.T.: 0.000 min
 Response: 10641184
 Conc: 54.08 ng/ml



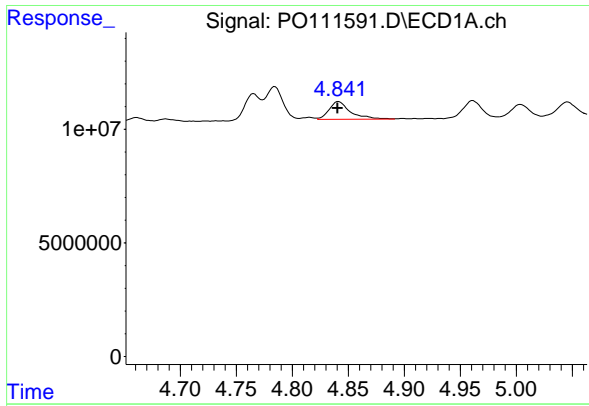
#4 AR-1016-2

R.T.: 4.784 min
 Delta R.T.: 0.000 min
 Response: 15230034
 Conc: 45.60 ng/ml m



#4 AR-1016-2

R.T.: 4.769 min
 Delta R.T.: 0.000 min
 Response: 14685829
 Conc: 51.55 ng/ml



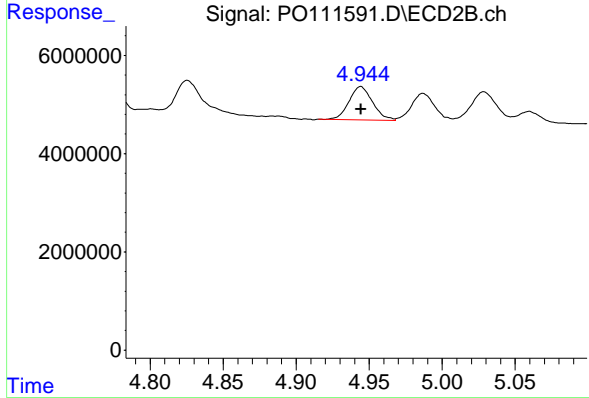
#5 AR-1016-3

R.T.: 4.841 min
 Delta R.T.: 0.000 min
 Response: 10294489
 Conc: 43.97 ng/ml

Instrument : ECD_O
 ClientSampleId : AR1660ICC050

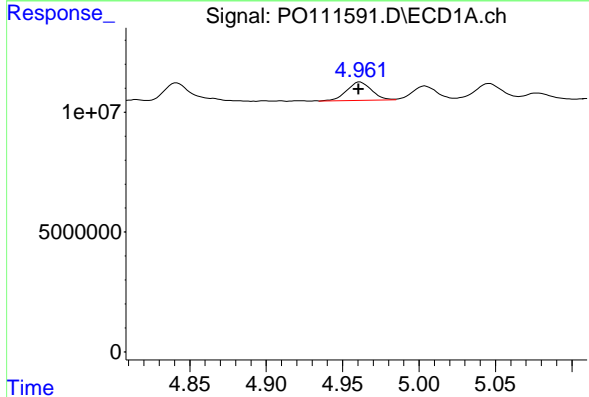
Manual Integrations
 APPROVED

Reviewed By :Yogesh Patel 06/12/2025
 Supervised By :mohammad ahmed 06/13/2025



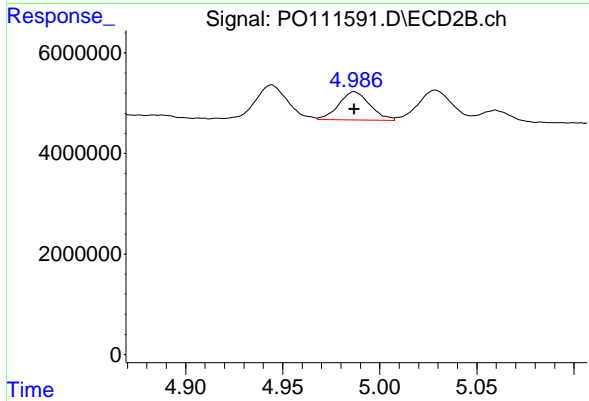
#5 AR-1016-3

R.T.: 4.944 min
 Delta R.T.: 0.000 min
 Response: 7595210
 Conc: 50.55 ng/ml



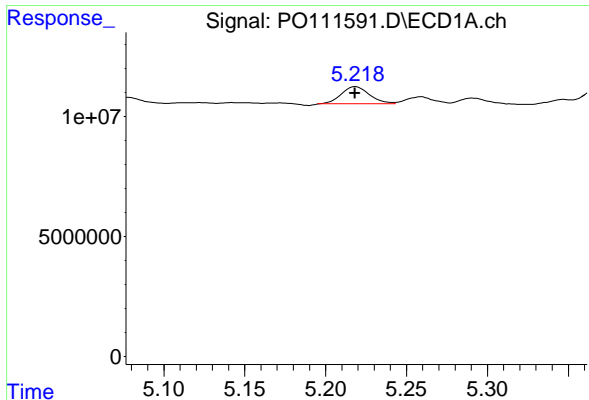
#6 AR-1016-4

R.T.: 4.961 min
 Delta R.T.: 0.000 min
 Response: 8679050
 Conc: 46.21 ng/ml m



#6 AR-1016-4

R.T.: 4.987 min
 Delta R.T.: 0.000 min
 Response: 6294307
 Conc: 51.68 ng/ml



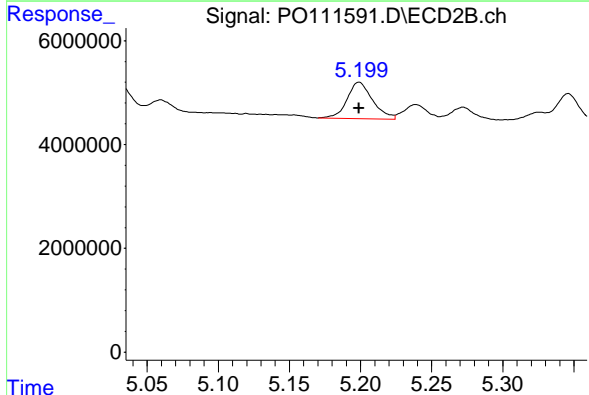
#7 AR-1016-5

R.T.: 5.218 min
 Delta R.T.: 0.000 min
 Response: 8531210
 Conc: 45.62 ng/ml

Instrument : ECD_O
 ClientSampleId : AR1660ICC050

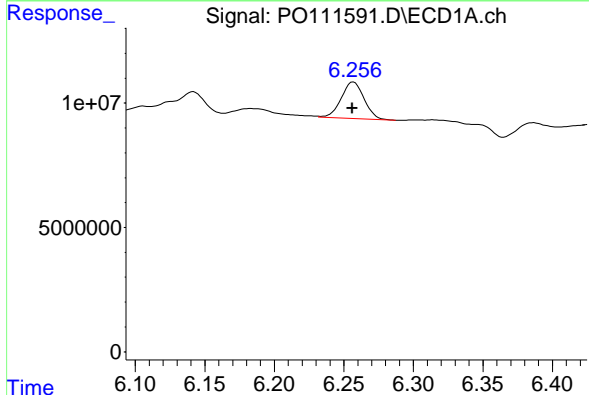
Manual Integrations
 APPROVED

Reviewed By :Yogesh Patel 06/12/2025
 Supervised By :mohammad ahmed 06/13/2025



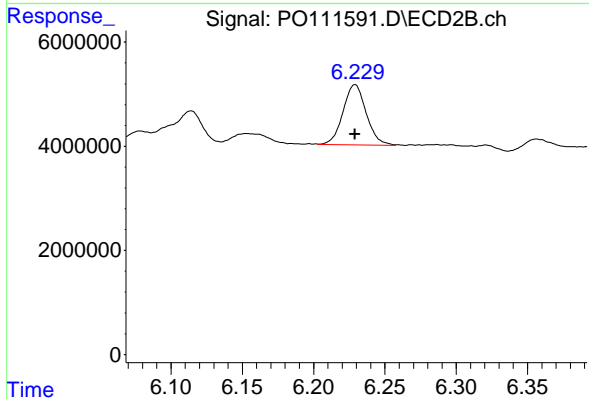
#7 AR-1016-5

R.T.: 5.199 min
 Delta R.T.: 0.000 min
 Response: 8768797
 Conc: 55.08 ng/ml



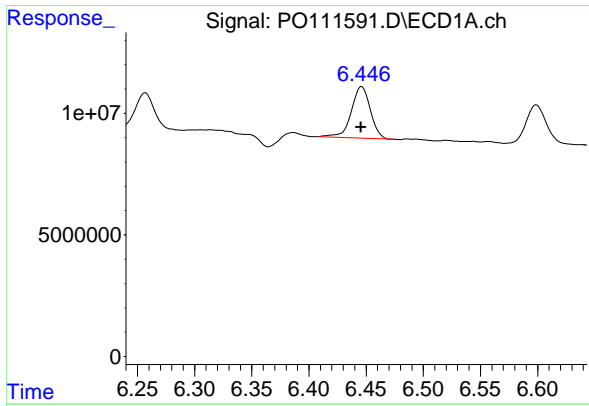
#31 AR-1260-1

R.T.: 6.256 min
 Delta R.T.: 0.000 min
 Response: 16630454
 Conc: 46.47 ng/ml m



#31 AR-1260-1

R.T.: 6.229 min
 Delta R.T.: 0.000 min
 Response: 13039756
 Conc: 51.75 ng/ml m



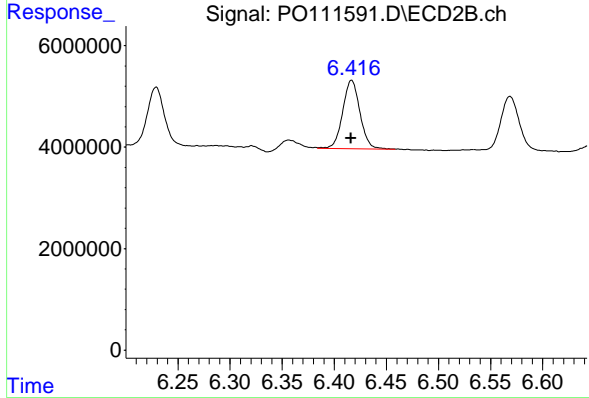
#32 AR-1260-2

R.T.: 6.446 min
 Delta R.T.: 0.000 min
 Response: 24715396
 Conc: 52.21 ng/ml

Instrument :
 ECD_O
 ClientSampleId :
 AR1660ICC050

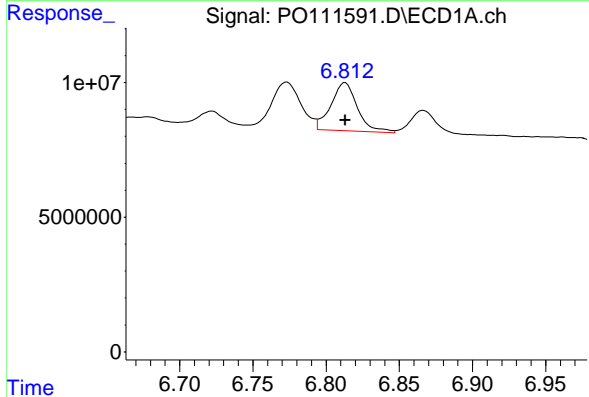
Manual Integrations
 APPROVED

Reviewed By :Yogesh Patel 06/12/2025
 Supervised By :mohammad ahmed 06/13/2025



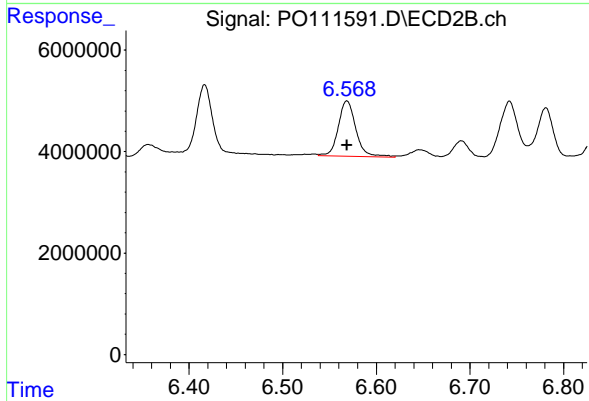
#32 AR-1260-2

R.T.: 6.416 min
 Delta R.T.: 0.000 min
 Response: 15670158
 Conc: 53.39 ng/ml m



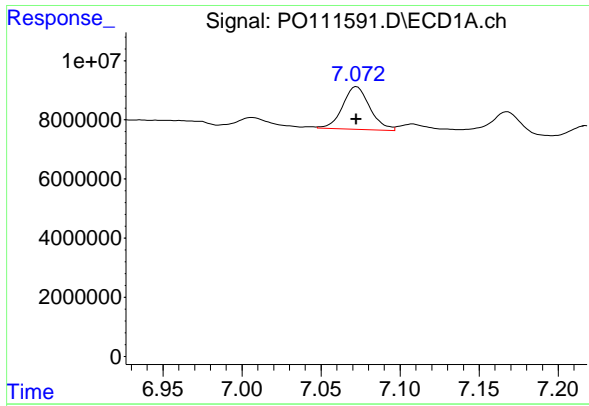
#33 AR-1260-3

R.T.: 6.813 min
 Delta R.T.: 0.000 min
 Response: 22383586
 Conc: 52.71 ng/ml



#33 AR-1260-3

R.T.: 6.569 min
 Delta R.T.: 0.000 min
 Response: 14269100
 Conc: 53.41 ng/ml



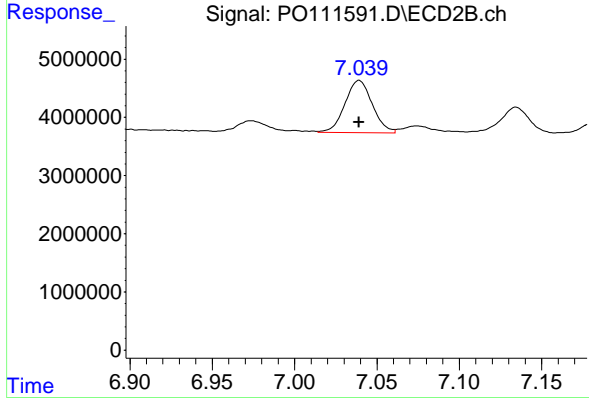
#34 AR-1260-4

R.T.: 7.072 min
 Delta R.T.: 0.000 min
 Response: 17363789
 Conc: 55.22 ng/ml

Instrument :
 ECD_O
 ClientSampleId :
 AR1660ICC050

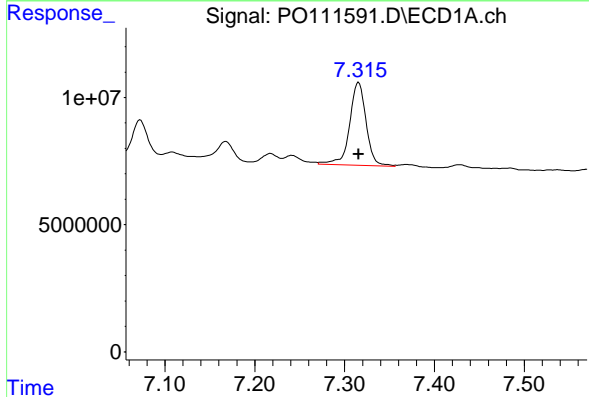
Manual Integrations
 APPROVED

Reviewed By :Yogesh Patel 06/12/2025
 Supervised By :mohammad ahmed 06/13/2025



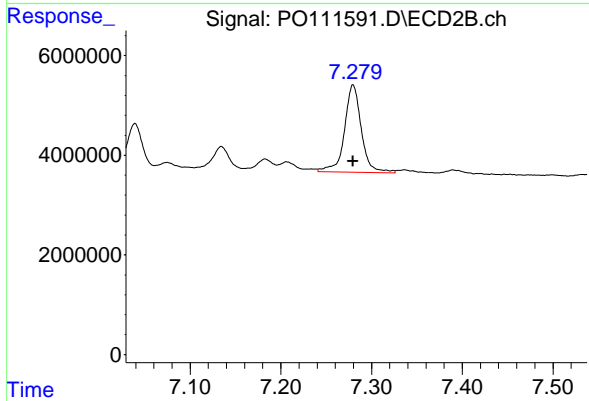
#34 AR-1260-4

R.T.: 7.039 min
 Delta R.T.: 0.000 min
 Response: 10374184
 Conc: 54.57 ng/ml



#35 AR-1260-5

R.T.: 7.316 min
 Delta R.T.: 0.000 min
 Response: 41341782
 Conc: 50.19 ng/ml



#35 AR-1260-5

R.T.: 7.280 min
 Delta R.T.: 0.000 min
 Response: 22505628
 Conc: 52.95 ng/ml