

Data Path : Z:\pestpcbsrv\HPCHEM1\ECD_O\Data\P0061125\
 Data File : P0111608.D
 Signal(s) : Signal #1: ECD1A.ch Signal #2: ECD2B.ch
 Acq On : 11 Jun 2025 17:18
 Operator : YP/AJ
 Sample : AR1254ICC050
 Misc :
 ALS Vial : 24 Sample Multiplier: 1

Instrument :
 ECD_O
 ClientSampleId :
 AR1254ICC050

Integration File signal 1: autoint1.e
 Integration File signal 2: autoint2.e
 Quant Time: Jun 12 05:34:28 2025
 Quant Method : Z:\pestpcbsrv\HPCHEM1\ECD_O\methods\P0061125.M
 Quant Title : GC EXTRACTABLES
 QLast Update : Thu Jun 12 05:32:17 2025
 Response via : Initial Calibration
 Integrator: ChemStation

Volume Inj. : 2 µl
 Signal #1 Phase : ZB-MR1 Signal #2 Phase: ZB-MR2
 Signal #1 Info : 30Mx0.32mmx 0.50µ Signal #2 Info : 30M x 0.32mm x 0.25µm

Compound	RT#1	RT#2	Resp#1	Resp#2	ng/ml	ng/ml

System Monitoring Compounds						
1) SA Tetrachlo...	3.675	3.673	33268586	29021554	5.525	5.078
2) SA Decachlor...	8.711	8.661	30958063	10135764	5.729	5.591
Target Compounds						
26) L6 AR-1254-1	5.570	5.550	26611811	18724590	65.057	58.675
27) L6 AR-1254-2	5.719	5.697	23766283	16284924	65.030	59.044
28) L6 AR-1254-3	6.124	6.098	32638345	23686717	57.564	56.812
29) L6 AR-1254-4	6.352	6.326	17926220	11952540	50.255	51.774
30) L6 AR-1254-5	6.772	6.743	28538450	18744477	55.741	57.891

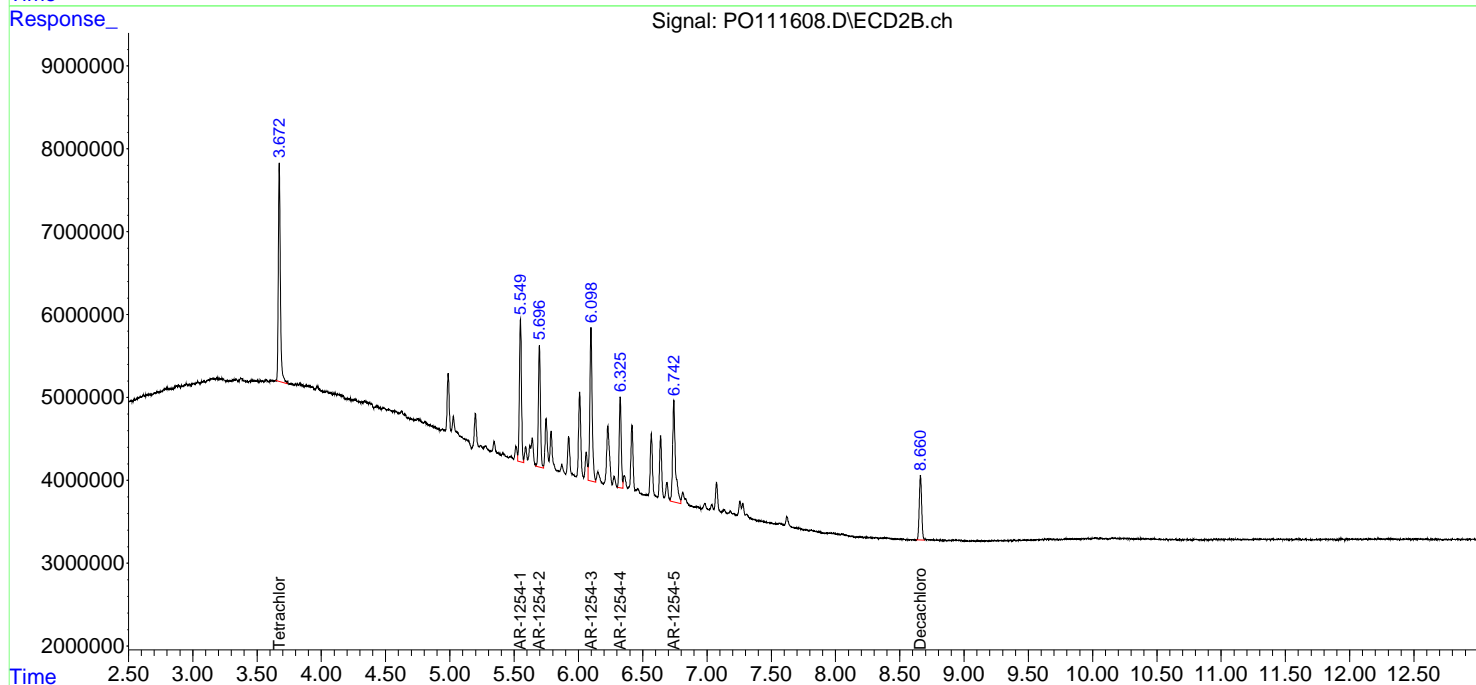
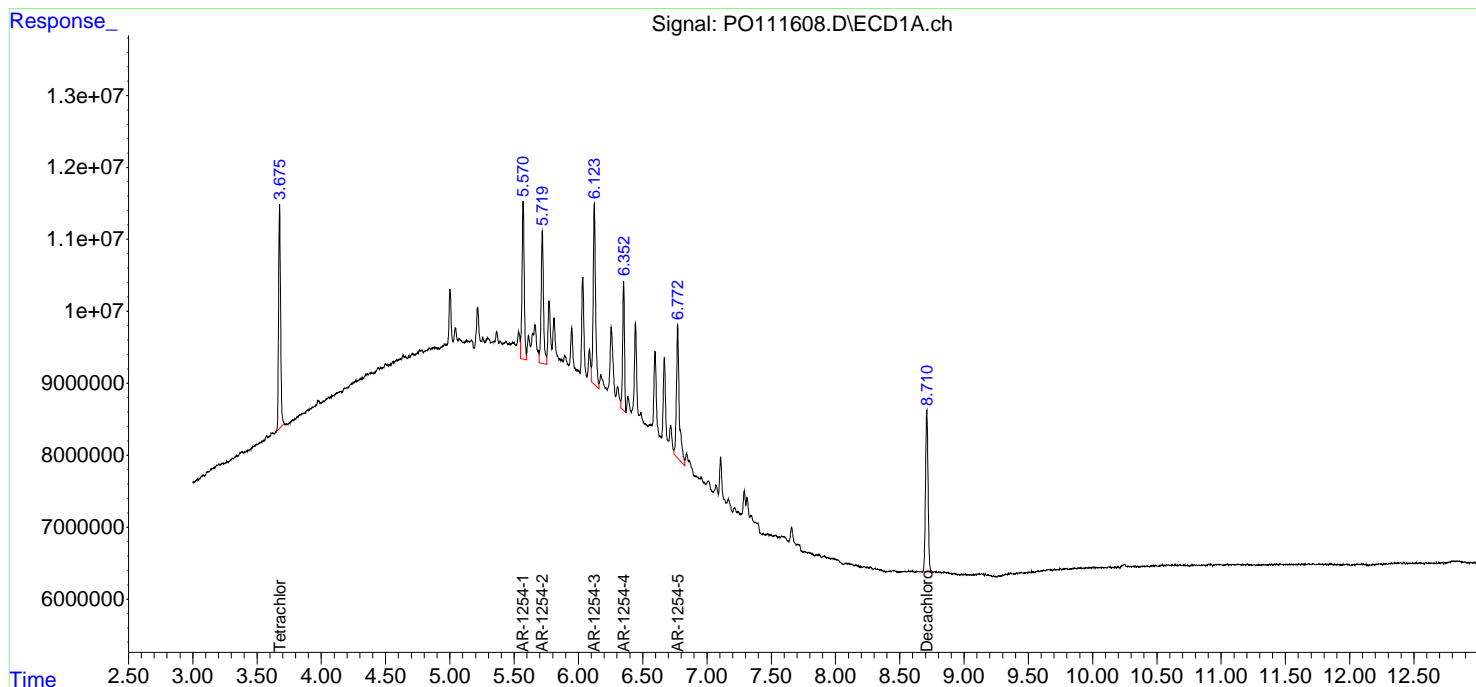
(f)=RT Delta > 1/2 Window (#)=Amounts differ by > 25% (m)=manual int.

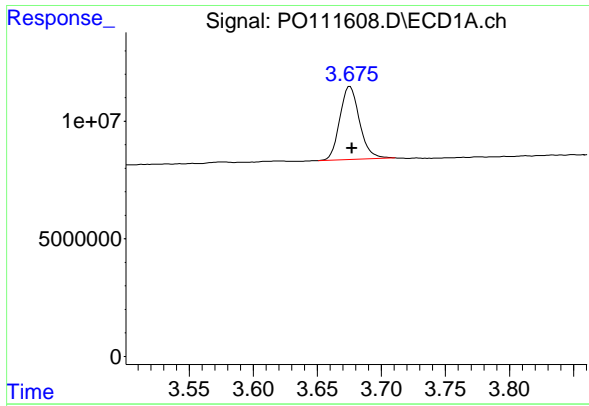
Data Path : Z:\pestpcbsrv\HPCHEM1\ECD_O\Data\PO061125\
 Data File : PO111608.D
 Signal(s) : Signal #1: ECD1A.ch Signal #2: ECD2B.ch
 Acq On : 11 Jun 2025 17:18
 Operator : YP/AJ
 Sample : AR1254ICC050
 Misc :
 ALS Vial : 24 Sample Multiplier: 1

Instrument :
 ECD_O
 ClientSampleId :
 AR1254ICC050

Integration File signal 1: autoint1.e
 Integration File signal 2: autoint2.e
 Quant Time: Jun 12 05:34:28 2025
 Quant Method : Z:\pestpcbsrv\HPCHEM1\ECD_O\methods\PO061125.M
 Quant Title : GC EXTRACTABLES
 QLast Update : Thu Jun 12 05:32:17 2025
 Response via : Initial Calibration
 Integrator: ChemStation

Volume Inj. : 2 µl
 Signal #1 Phase : ZB-MR1 Signal #2 Phase: ZB-MR2
 Signal #1 Info : 30Mx0.32mmx 0.50µm Signal #2 Info : 30M x 0.32mm x 0.25µm

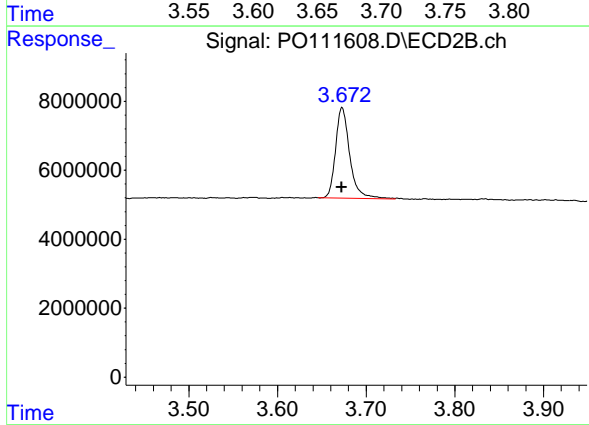




#1 Tetrachloro-m-xylene

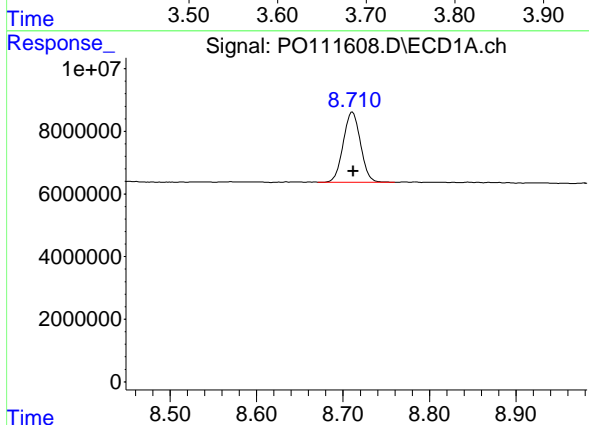
R.T.: 3.675 min
 Delta R.T.: -0.002 min
 Response: 33268586
 Conc: 5.52 ng/ml

Instrument :
 ECD_O
 ClientSampleId :
 AR1254IC050



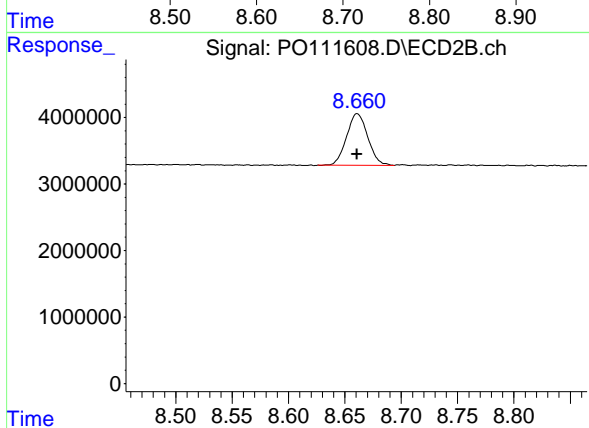
#1 Tetrachloro-m-xylene

R.T.: 3.673 min
 Delta R.T.: 0.000 min
 Response: 29021554
 Conc: 5.08 ng/ml



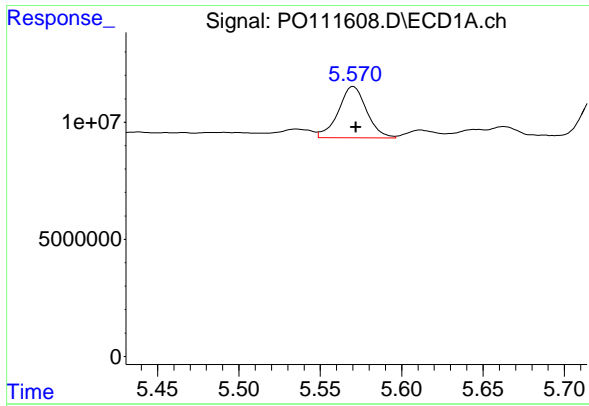
#2 Decachlorobiphenyl

R.T.: 8.711 min
 Delta R.T.: -0.001 min
 Response: 30958063
 Conc: 5.73 ng/ml



#2 Decachlorobiphenyl

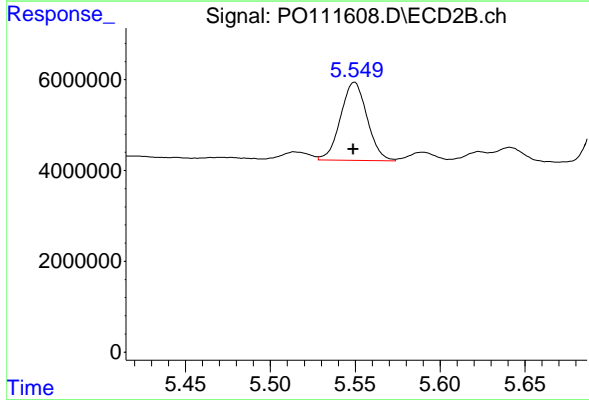
R.T.: 8.661 min
 Delta R.T.: 0.000 min
 Response: 10135764
 Conc: 5.59 ng/ml



#26 AR-1254-1

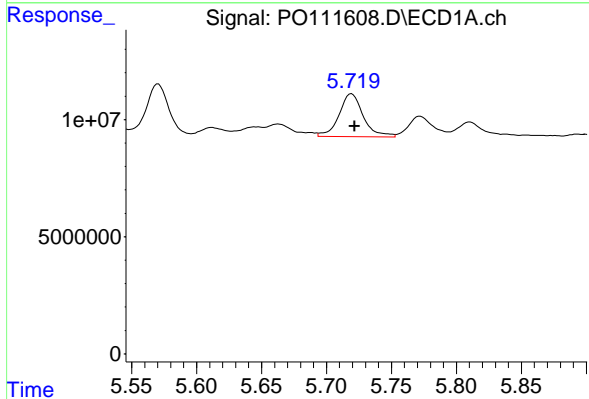
R.T.: 5.570 min
 Delta R.T.: -0.002 min
 Response: 26611811
 Conc: 65.06 ng/ml

Instrument :
 ECD_O
 ClientSampleId :
 AR1254IC050



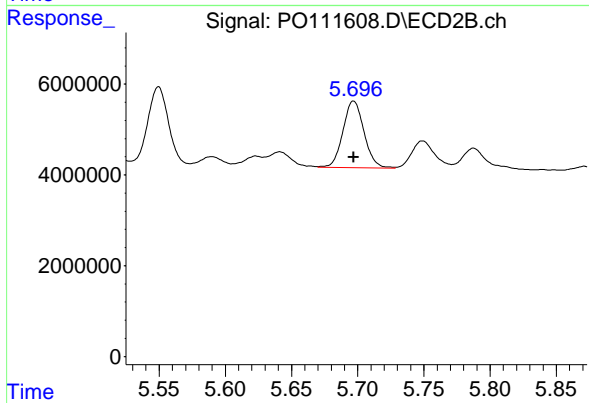
#26 AR-1254-1

R.T.: 5.550 min
 Delta R.T.: 0.000 min
 Response: 18724590
 Conc: 58.68 ng/ml



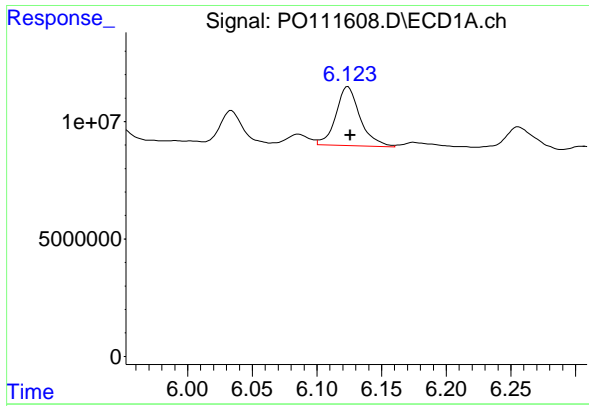
#27 AR-1254-2

R.T.: 5.719 min
 Delta R.T.: -0.002 min
 Response: 23766283
 Conc: 65.03 ng/ml



#27 AR-1254-2

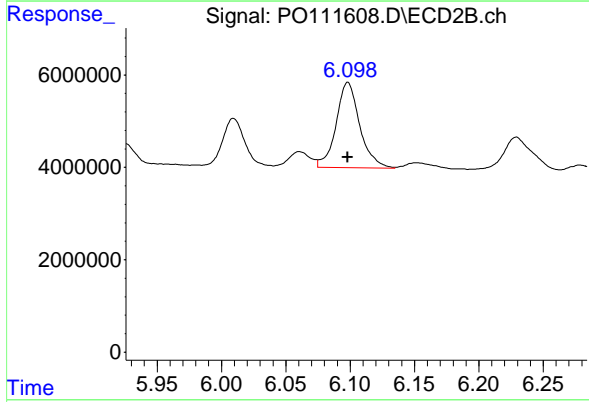
R.T.: 5.697 min
 Delta R.T.: 0.000 min
 Response: 16284924
 Conc: 59.04 ng/ml



#28 AR-1254-3

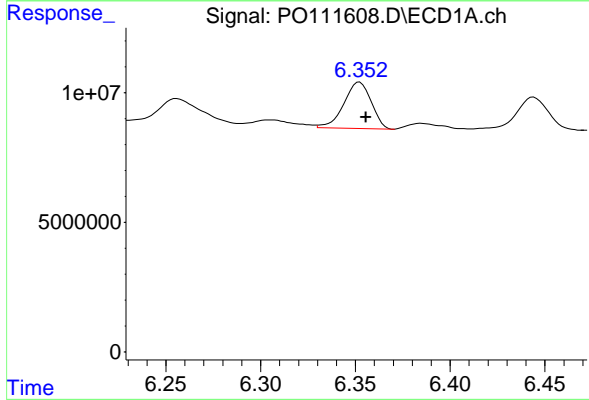
R.T.: 6.124 min
 Delta R.T.: -0.002 min
 Response: 32638345
 Conc: 57.56 ng/ml

Instrument :
 ECD_O
 ClientSampleId :
 AR1254ICC050



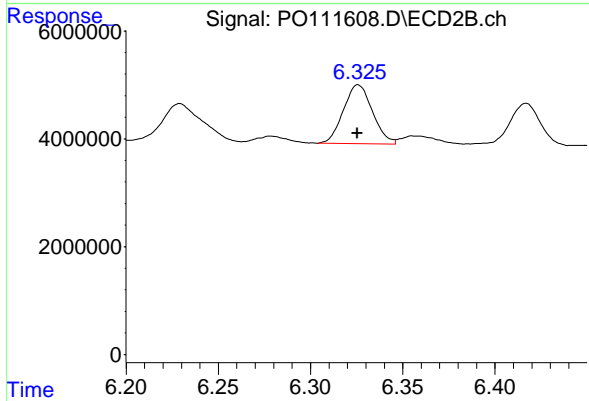
#28 AR-1254-3

R.T.: 6.098 min
 Delta R.T.: 0.000 min
 Response: 23686717
 Conc: 56.81 ng/ml



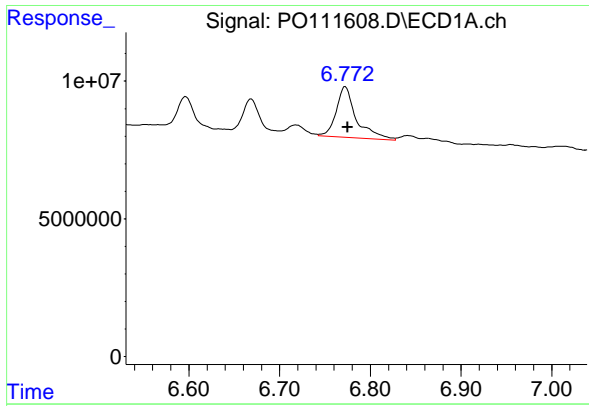
#29 AR-1254-4

R.T.: 6.352 min
 Delta R.T.: -0.003 min
 Response: 17926220
 Conc: 50.25 ng/ml



#29 AR-1254-4

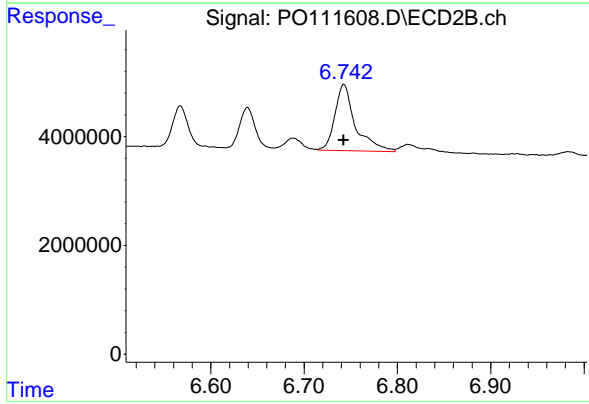
R.T.: 6.326 min
 Delta R.T.: 0.000 min
 Response: 11952540
 Conc: 51.77 ng/ml



#30 AR-1254-5

R.T.: 6.772 min
Delta R.T.: -0.002 min
Response: 28538450
Conc: 55.74 ng/ml

Instrument :
ECD_O
ClientSampleId :
AR1254\ICC050



#30 AR-1254-5

R.T.: 6.743 min
Delta R.T.: 0.000 min
Response: 18744477
Conc: 57.89 ng/ml