

Data Path : Z:\pestpcbsrv\HPCHEM1\ECD_0\Data\P0061220\
 Data File : P0068916.D
 Signal(s) : Signal #1: ECD1A.CH Signal #2: ECD2B.CH
 Acq On : 12 Jun 2020 12:25
 Operator : DD\AJ
 Sample : AR1262ICC500
 Misc :
 ALS Vial : 13 Sample Multiplier: 1

Instrument :
 ECD_0
 ClientSampleId :
 AR1262ICC500

Integration File signal 1: autoint1.e
 Integration File signal 2: autoint2.e
 Quant Time: Jun 12 17:15:55 2020
 Quant Method : Z:\pestpcbsrv\HPCHEM1\ECD_0\methods\P0061220.M
 Quant Title : GC EXTRACTABLES
 QLast Update : Fri Jun 12 17:15:35 2020
 Response via : Initial Calibration
 Integrator: ChemStation 6890 Scale Mode: Small noise peaks clipped

Volume Inj. : 2 µl
 Signal #1 Phase : ZB-MR1 Signal #2 Phase: ZB-MR2
 Signal #1 Info : 30Mx0.32mmx 0.50µ Signal #2 Info : 30M x 0.32mm x 0.25µm

Compound	RT#1	RT#2	Resp#1	Resp#2	ng/ml	ng/ml

System Monitoring Compounds						
1) SA Tetrachlo...	4.411	3.567	1375797	1726780	50.000	50.000
2) SA Decachlor...	10.081	8.775	2232301	2569902	50.000	50.000
Target Compounds						
36) L8 AR-1262-1	8.011	6.892	1269354	855916	500.000	500.000
37) L8 AR-1262-2	8.552	7.445	2465798	3175305	500.000	500.000
38) L8 AR-1262-3	8.824	7.728	1108187	1242408	500.000	500.000
39) L8 AR-1262-4	8.904	7.790	704330	2400443	500.000	500.000
40) L8 AR-1262-5	9.469	8.287	940489	1171328	500.000	500.000

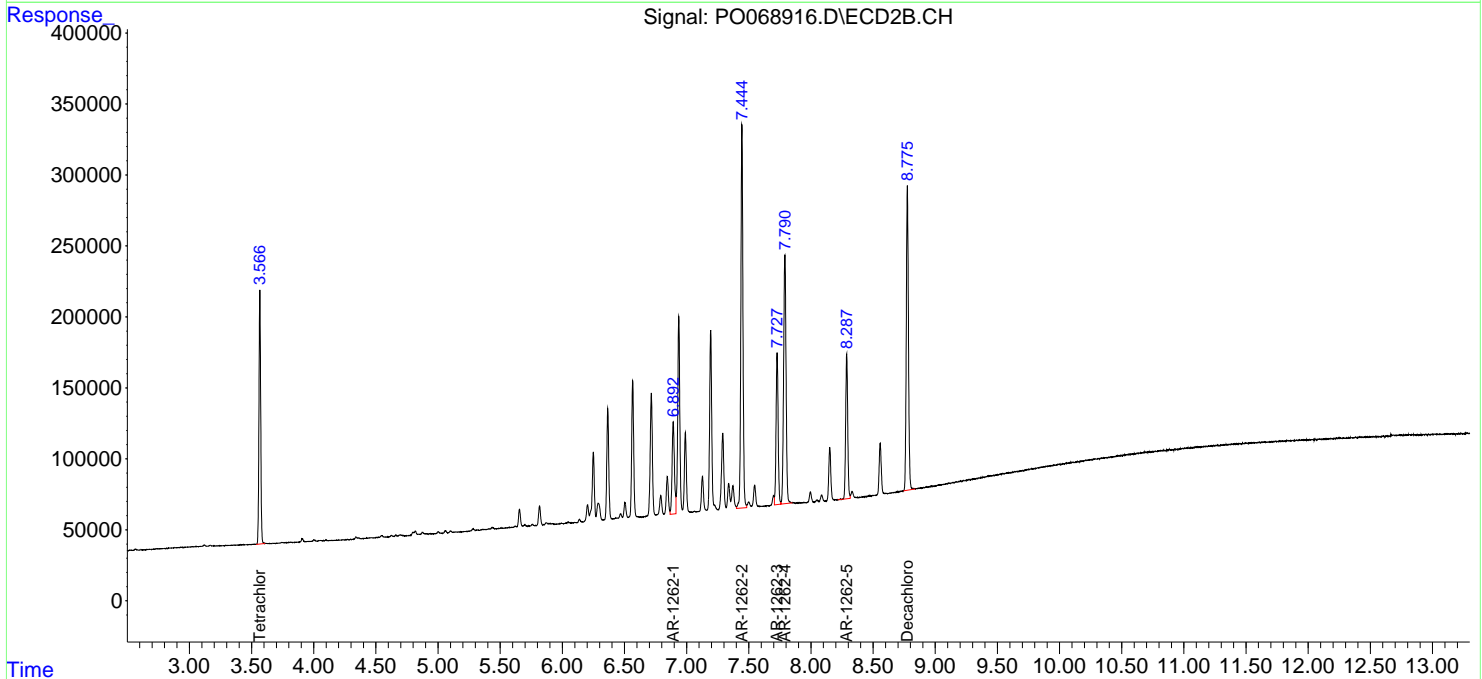
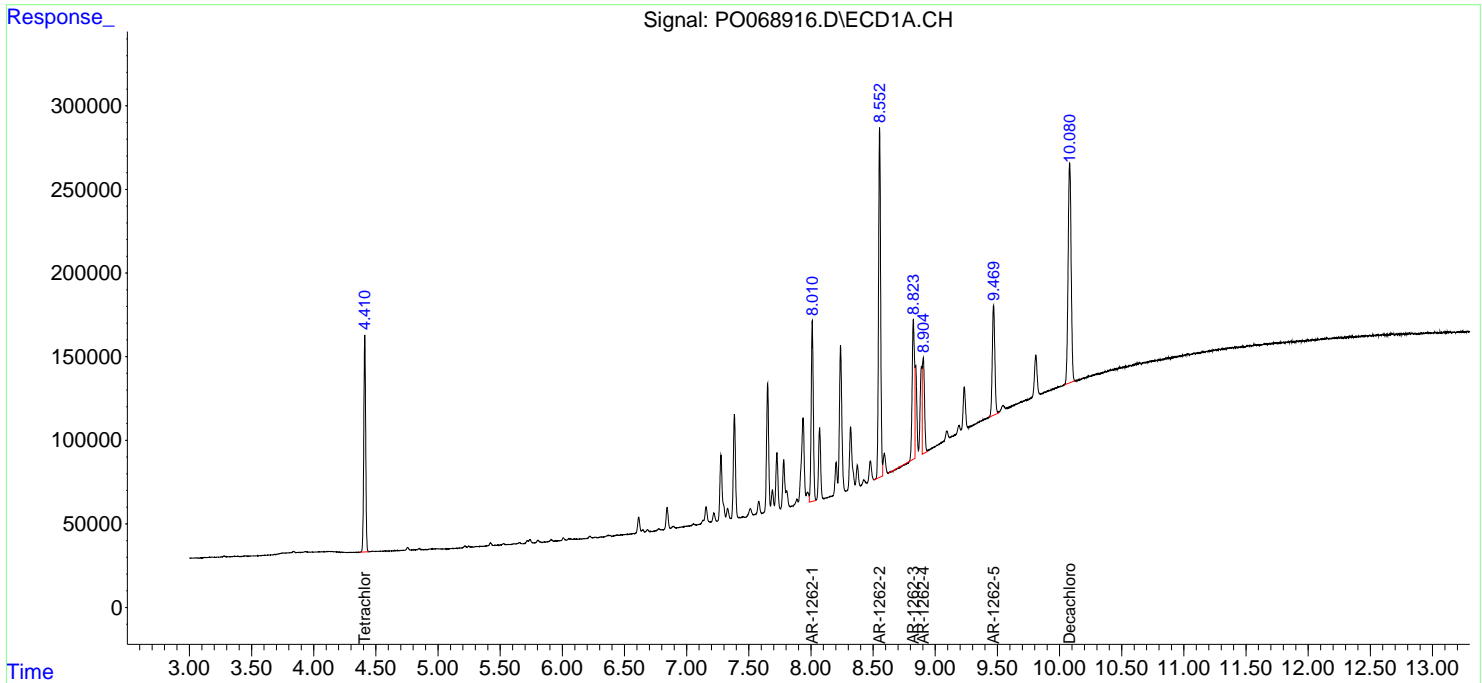
(f)=RT Delta > 1/2 Window (#)=Amounts differ by > 25% (m)=manual int.

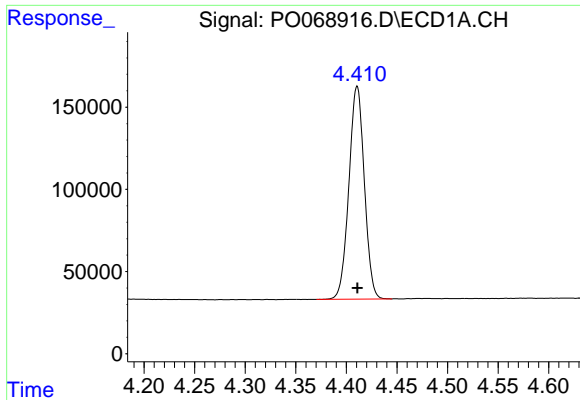
Data Path : Z:\pestpcbsrv\HPCHEM1\ECD_O\Data\P0061220\
 Data File : P0068916.D
 Signal(s) : Signal #1: ECD1A.CH Signal #2: ECD2B.CH
 Acq On : 12 Jun 2020 12:25
 Operator : DD\AJ
 Sample : AR1262ICC500
 Misc :
 ALS Vial : 13 Sample Multiplier: 1

Instrument :
 ECD_O
 ClientSampled :
 AR1262ICC500

Integration File signal 1: autoint1.e
 Integration File signal 2: autoint2.e
 Quant Time: Jun 12 17:15:55 2020
 Quant Method : Z:\pestpcbsrv\HPCHEM1\ECD_O\methods\P0061220.M
 Quant Title : GC EXTRACTABLES
 QLast Update : Fri Jun 12 17:15:35 2020
 Response via : Initial Calibration
 Integrator: ChemStation 6890 Scale Mode: Small noise peaks clipped

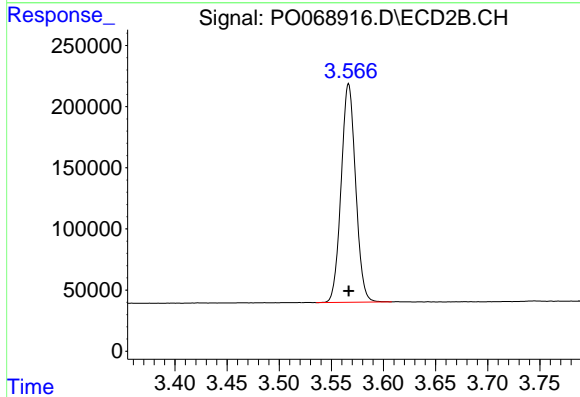
Volume Inj. : 2 µl
 Signal #1 Phase : ZB-MR1 Signal #2 Phase: ZB-MR2
 Signal #1 Info : 30Mx0.32mmx 0.50µ Signal #2 Info : 30M x 0.32mm x 0.25µm



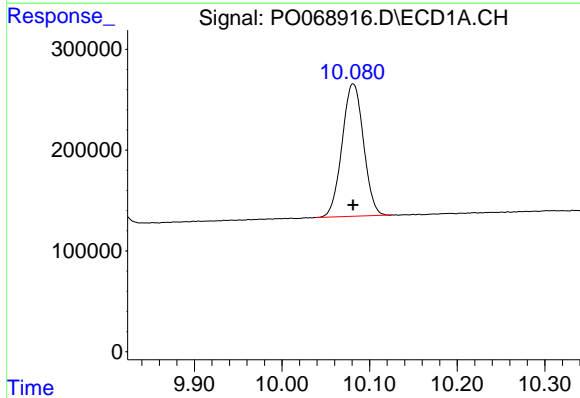


#1 Tetrachloro-m-xylene
 R.T.: 4.411 min
 Delta R.T.: 0.000 min
 Response: 1375797
 Conc: 50.00 ng/ml

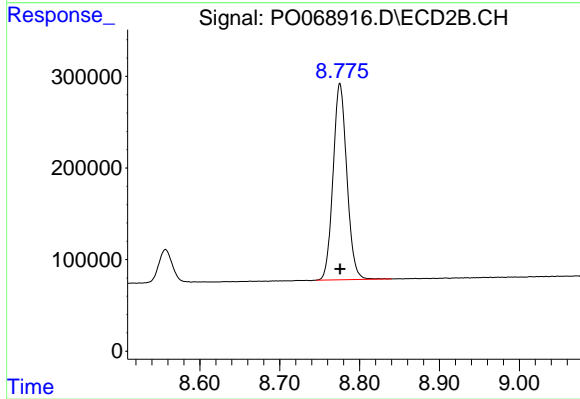
Instrument :
 ECD_O
 ClientSampleId :
 AR1262ICC500



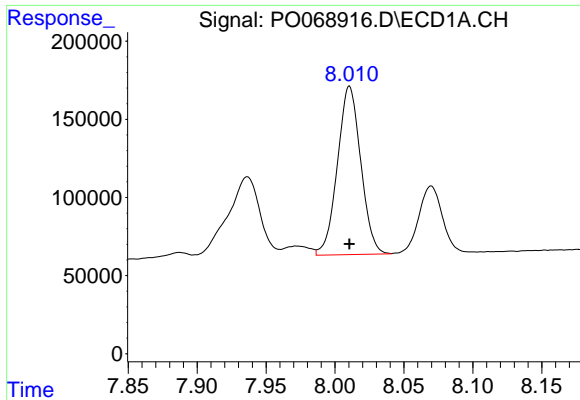
#1 Tetrachloro-m-xylene
 R.T.: 3.567 min
 Delta R.T.: 0.000 min
 Response: 1726780
 Conc: 50.00 ng/ml



#2 Decachlorobiphenyl
 R.T.: 10.081 min
 Delta R.T.: 0.000 min
 Response: 2232301
 Conc: 50.00 ng/ml



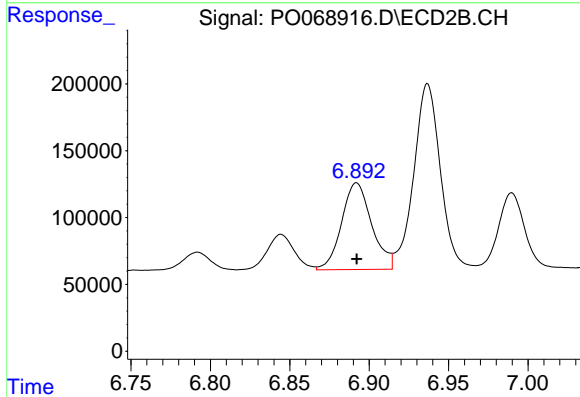
#2 Decachlorobiphenyl
 R.T.: 8.775 min
 Delta R.T.: 0.000 min
 Response: 2569902
 Conc: 50.00 ng/ml



#36 AR-1262-1

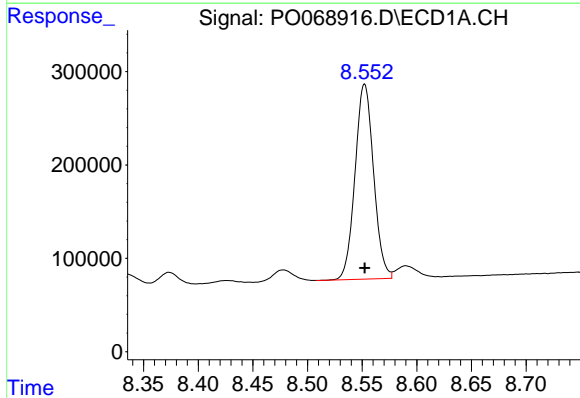
R.T.: 8.011 min
 Delta R.T.: 0.000 min
 Response: 1269354
 Conc: 500.00 ng/ml

Instrument :
 ECD_O
 ClientSampleId :
 AR1262ICC500



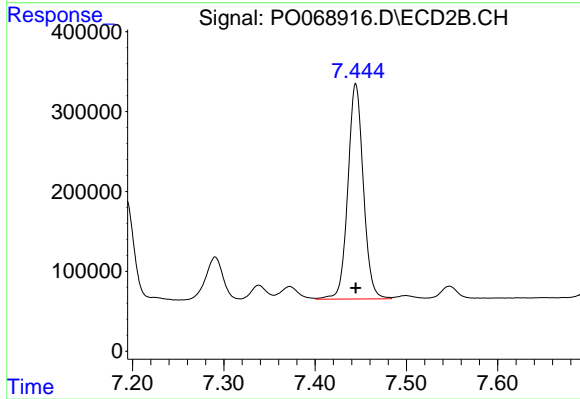
#36 AR-1262-1

R.T.: 6.892 min
 Delta R.T.: 0.000 min
 Response: 855916
 Conc: 500.00 ng/ml



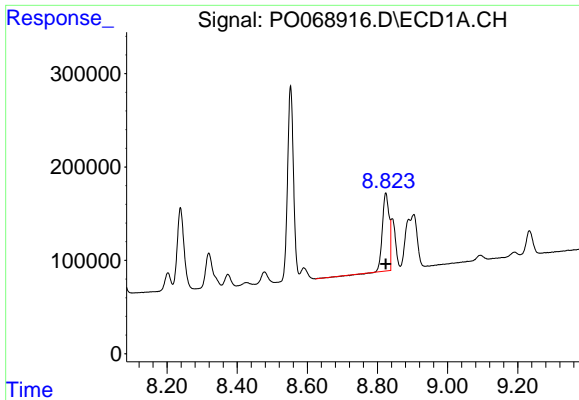
#37 AR-1262-2

R.T.: 8.552 min
 Delta R.T.: 0.000 min
 Response: 2465798
 Conc: 500.00 ng/ml



#37 AR-1262-2

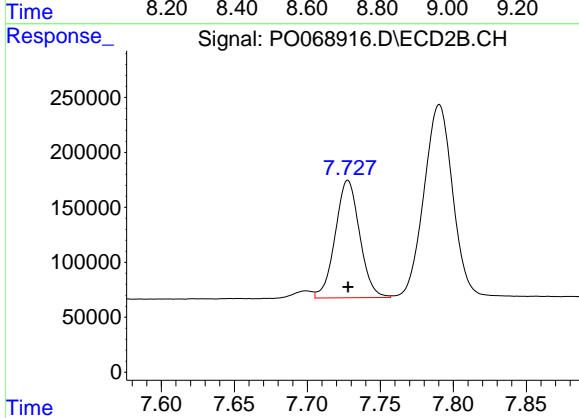
R.T.: 7.445 min
 Delta R.T.: 0.000 min
 Response: 3175305
 Conc: 500.00 ng/ml



#38 AR-1262-3

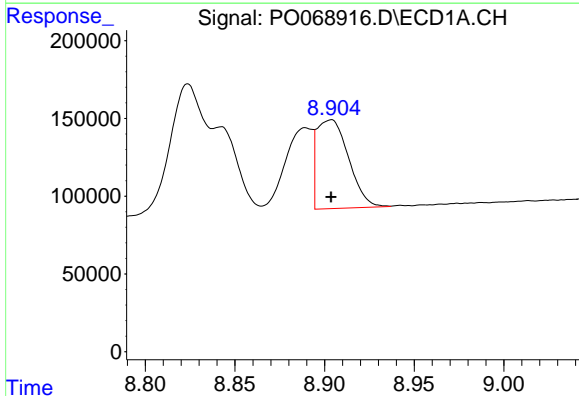
R.T.: 8.824 min
 Delta R.T.: 0.000 min
 Response: 1108187
 Conc: 500.00 ng/ml

Instrument :
 ECD_O
 ClientSampleId :
 AR1262ICC500



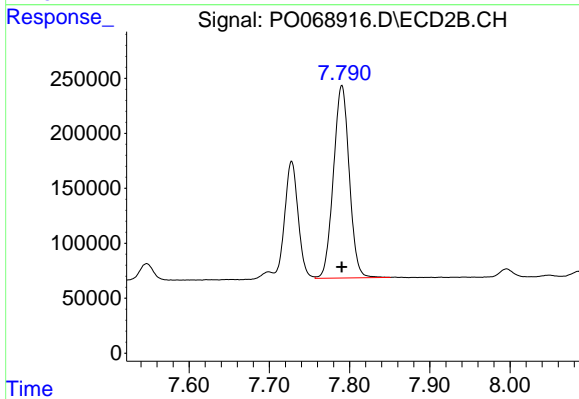
#38 AR-1262-3

R.T.: 7.728 min
 Delta R.T.: 0.000 min
 Response: 1242408
 Conc: 500.00 ng/ml



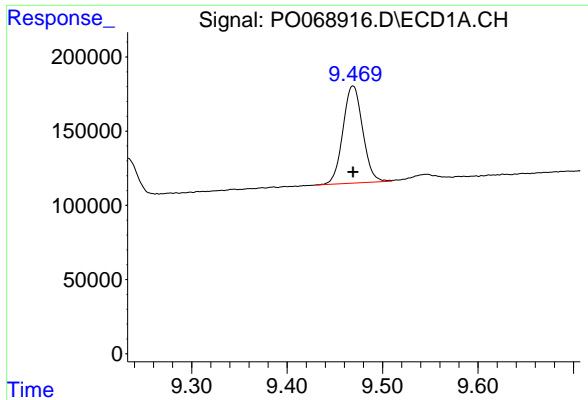
#39 AR-1262-4

R.T.: 8.904 min
 Delta R.T.: 0.000 min
 Response: 704330
 Conc: 500.00 ng/ml



#39 AR-1262-4

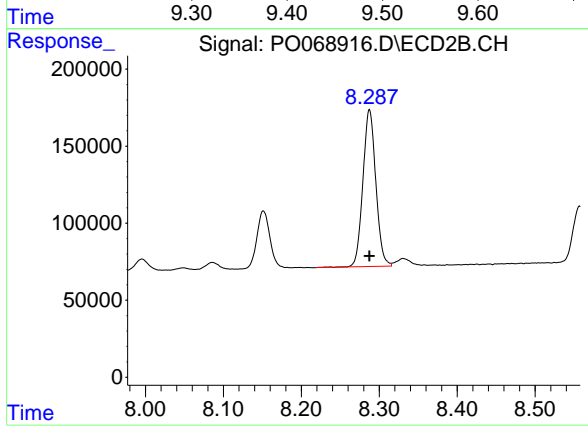
R.T.: 7.790 min
 Delta R.T.: 0.000 min
 Response: 2400443
 Conc: 500.00 ng/ml



#40 AR-1262-5

R.T.: 9.469 min
Delta R.T.: 0.000 min
Response: 940489
Conc: 500.00 ng/ml

Instrument :
ECD_O
ClientSampled :
AR1262ICC500



#40 AR-1262-5

R.T.: 8.287 min
Delta R.T.: 0.000 min
Response: 1171328
Conc: 500.00 ng/ml